



INTERNATIONAL MERCHANDISE TRADE STATISTICS

Monthly Digest- March 2024
Version 2

Contact Statistician: Mogotsi J. Morewanare
Email: mmorewanare@statsbots.org.bw



STATISTICS BOTSWANA

Published by

STATISTICS BOTSWANA

GABORONE (HEAD OFFICE)

Private Bag 0024
Gaborone
Tel: 3671300 Fax: 3952201
Toll Free: 0800 600 200

MAUN OFFICE

Private Bag 47
Maun
Tel: 371 5716
Fax: 686 4327

FRANCISTOWN OFFICE

Private Bag F193,
City of Francistown
Tel: 241 5848,
Fax: 241 7540

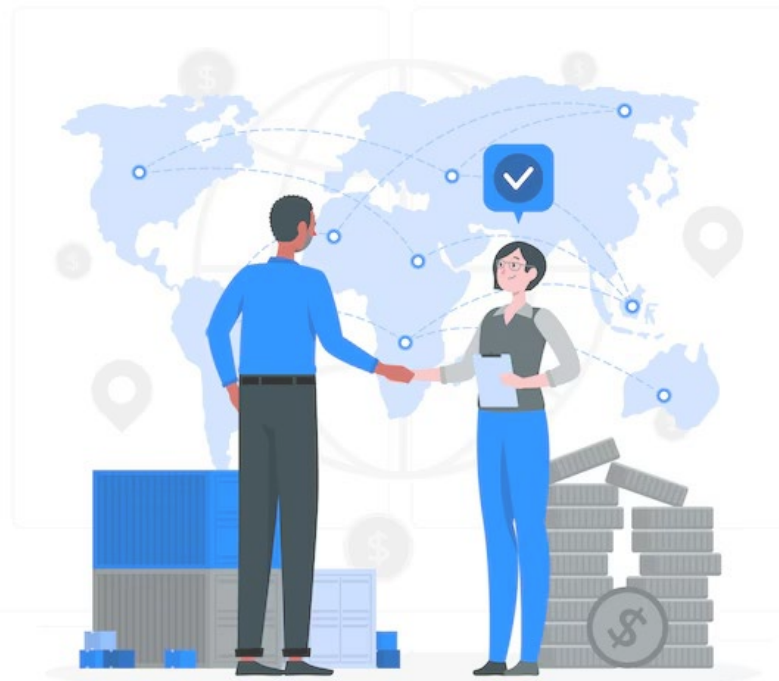
E-mail: info@statsbots.org.bw

Website: <http://www.statsbots.org.bw>

MAY 2024

Copyright © Statistics Botswana 2024





INTERNATIONAL MERCHANDISE TRADE STATISTICS

Monthly Digest- March 2024
Version 2

TABLE OF CONTENTS

| | |
|---|----|
| List of Acronyms..... | 2 |
| Preface..... | ii |
| Executive Summary..... | 1 |
| 1.0 Total Trade..... | 2 |
| 1.1 Data Revision..... | 2 |
| 1.2 Imports..... | 2 |
| 1.3 Total Exports..... | 2 |
| 1.4 Trade Balance..... | 2 |
| 2.0 Trade by Principal Commodity Groups..... | 3 |
| 2.1 Principal Imports..... | 3 |
| 2.2 Principal Exports..... | 4 |
| 3.0 Direction of Trade..... | 5 |
| 4.0 Imports and Exports by Top imported and Exported Commodities..... | 7 |
| 5.0 Trade by Mode of Transport..... | 7 |
| 6.0 Transit Trade..... | 8 |
| 7.0 Annexure..... | 11 |
| 8.0 Concepts, Sources and Methods..... | 23 |
| 8.1 Time of Recording of Trade..... | 23 |
| 8.2 Concepts and Definitions..... | 23 |
| 8.3 Exclusions from IMTS..... | 24 |

LIST OF TABLES

| | |
|---|----|
| Table A: Data Revision: February 2024 (Million Pula)..... | 2 |
| Table B: Trade by Mode of Transport – March 2024 (Million Pula)..... | 8 |
| Table C1: Transit Trade by Border Post – March 2024 (Million Pula)..... | 9 |
| Table C2: Transit by Chapter – March 2024 (Million Pula)..... | 10 |
| Table 1.0: Total Merchandise Trade – January 2022 to March 2024 (Million Pula)..... | 11 |
| Table 2.1: Principal Imports Commodity Groups – January 2022 to March 2024 (Million Pula)..... | 12 |
| Table 2.2: Principal Export Commodity Groups – January 2022 to March 2024 (Million Pula)..... | 13 |
| Table 2.3: Diamonds Trade – January 2022 to March 2024 (Million Pula)..... | 14 |
| Table 3.1A: Total Imports by Country, Region and Principal Import Commodity Groups - March 2024 (Million Pula)..... | 15 |
| Table 3.1B: Principal Imports Commodity Groups as a Percentage of Total Imports at Country and Regional Level – March 2024..... | 16 |
| Table 3.2A: Total Exports by Country, Region and Principal Export Commodity Groups – March 2024 (Million Pula)..... | 17 |
| Table 3.2 B: Principal Exports Commodity Groups as a Percentage of Total Exports at Country and Regional Level – March 2024..... | 18 |
| Table 4.1 A: Top Imported Goods (Excluding Diamonds) – March 2024 (Million Pula)..... | 19 |
| Table 4.1A: Top Imported Goods (Excluding Diamonds) – March 2024 (Million Pula) Continued.. | 20 |
| Table 4.1 B: Top Exported Goods (Excluding Diamonds) – March 2024 (Million Pula)..... | 21 |
| Table 4.1 B: Top Exported Goods (Excluding Diamonds) – March 2024 (Million Pula) Continued.. | 22 |

TABLE OF CONTENTS

LIST OF CHARTS

| | |
|--|----|
| Chart 1.0: Total International Merchandise Trade – January 2022 to March 2024 (Million Pula)..... | 3 |
| Chart 2.1: Composition of Principal Imports- March 2024..... | 4 |
| Chart 2.2: Composition of Principal Exports – March 2024..... | 4 |
| Chart 3.1: Imports by Major Trading Partner Countries & Regions – March 2024..... | 6 |
| Chart 3.2: Exports by Major Trading Partner Countries & Regions – March 2024..... | 7 |
| Chart B: Trade by Mode of Transport – March 2024 (Percentage)..... | 8 |
| Chart C1: Transit Trade by Border Post – March 2024 (Percentage)..... | 9 |
| Chart C2: Transit Trade by Chapter – March 2024 (Percentage)..... | 10 |

List of Acronyms

| | |
|-------------|---|
| CIF | : Cost, Insurance and Freight |
| EU | : European Union |
| FOB | : Free On Board |
| IMTS | : International Merchandise Trade Statistics |
| NES | : Not Elsewhere Specified |
| SACU | : Southern Africa Customs Union |
| SADC | : Southern Africa Development Community |
| UAE | : United Arab Emirates |
| USA | : United States of America |

Preface

This report is a revision of the original. The revision is in **Table B: Trade by Mode of Transport - March 2024 (Million Pula)**. It was realised that the modes of transport were swapped, hence the old table has been replaced.

International Merchandise Trade Statistics measure the flows of goods across national borders and can be used to spot emerging markets, gauge competition, and identify export and import opportunities. As a result, it is integral to the process of globalization by keeping track of all exchanges of goods between trading partners. The transaction reflects the value and quantity of goods that add to (Imports) or subtract from (Exports), the stock of material resources of a country. Trade statistics continue to be one of the key indicators of economic performance and global competitiveness.

The monthly International Merchandise Trade Statistics are used extensively in the compilation of national accounts and balance of payments. Furthermore, these statistics are used by government institutions and other stakeholders for trade negotiations and other various purposes.

This publication outlines Botswana's monthly International Merchandise Trade Statistics (IMTS) for March 2024. The report provides summaries of international trade in goods, as shown in **Table 1.0**. **Tables 2.1** and **2.2** show trade by Principal commodity groupings for imports and exports, respectively, whereas **Table 2.3** solely shows trade in diamonds. The direction of trade appears in **Table 3.1A** (imports) and **Table 3.2A** (total exports). Major trading partner countries by commodity groups, as a percentage of trade at region or country level, for March 2024 are presented in **Table 3.1B** for imports and **Table 3.2B** for exports. The top traded import and export commodities excluding diamonds for March 2024 are presented in **Tables 4.1A & 4.2A** respectively. This is to guide users on opportunities to produce commodities for import substitution or possible exportation.

Changes in data for the corresponding months in the current versus previous digests may be attributed to data from transactions that had deferred customs duty assessments. The data for such transactions would only be available at a later stage after customs duty assessments have been completed.

International trade statistics by mode of transport are collected for the active modes of transport (road, rail, air) through which goods are presumed to leave or enter the statistical territory of the country. Such data may be used to formulate transport policy, monitor international transport routes or assess the impact of international trade on the environment.

For more information, contact the Directorate of Stakeholder Relations at 3671300. All Statistics Botswana publications are available on the website at www.statsbots.org.bw and at the Statistics Botswana Information Resource Centre (Head Office, Gaborone).

I sincerely thank all stakeholders involved in the formulation of this monthly digest, for their continued support and feedback, as we strive to serve users of our products and services.



Dr Lucky Mokgathe
Acting Statistician General
May 2024

Executive Summary

This International Merchandise Trade Statistics (IMTS) monthly digest provides a summary of trade statistics on Botswana's total imports and exports of goods for March 2024. International merchandise trade statistics records all goods which add to, or subtract from, the stock of material resources of a country by entering (as imports) or leaving (as exports) its economic territory.

In March 2024, Imports stood at P6, 991.0 million, registering a decrease of 5.8 percent from the revised February 2024 value of P 7, 420.0 million. The top imported commodity groups were Fuel at 19.1 percent, followed by Diamonds, Food, Beverages & Tobacco and Machinery & Electrical Equipment at 17.5 percent, 15.9 percent and 13.9 percent, respectively. Chemicals & Rubber Products contributed 10.5 percent.

The Southern African Customs Union (**SACU**) was the main source of imports at 78.2 percent. Asia and the European Union (**EU**) accounted for 7.2 percent and 4.0 percent of total imports, respectively. South Africa, Namibia and Canada supplied imports accounting for 62.8 percent, 15.0 percent and 5.5 percent respectively (**Table 3.1A**).

In March 2024, Botswana's overall exports increased by 30.2 percent from the revised February 2024 value of P3, 470.8 million to P4, 518.5 million. Diamonds and Copper led the total exports with contributions of 67.1 percent and 17.0 percent respectively.

During the period under review, Botswana's exports were mostly absorbed by Asia with a market share of 63.0 percent. **SACU** and the **EU** received 13.4 percent and 11.4 percent of total exports, respectively. Botswana's top export destinations were the United Arab Emirates (**UAE**), India and South Africa having received exports representing 28.6 percent, 18.1 percent and 12.7 percent of total exports respectively (**Table 3.2A**).

Goods exported by Air accounted for 69.3 percent of total exports, while those transported by Road and Rail represented 30.3 percent and 0.4 percent respectively. Imports representing 74.7 percent of the total were transported into the country by Road. Goods imported by Air and Rail accounted for 18.3 percent and 7.0 percent of total imports respectively (**Table B**).

During March 2024, merchandise worth P22, 981.8 million transited through the country to various destinations. Goods accounting for 61.2 percent of total goods in transit were routed through Martins Drift border post. Kazungula Bridge and Mamuno border posts followed with 23.0 percent and 7.8 percent respectively, (**Table C1**). The top transiting goods were chapter 74 (Copper and articles thereof) at 32.7 percent, Chapter 28 (Inorganic chemicals; organic and inorganic compounds of precious metals; of rare earth metals, of radio-active elements and of isotopes) at 24.0 percent and chapter 99 (Commodities not specified according to kind) at 16.5 percent of all goods on transit (**Table C2**).

1.0 Total Trade

Total merchandise trade refers to imports, domestic exports, re-exports and trade balance between countries or regions over a specific period. The discussions are based on March 2024, which is also referred to as the reference period, the period under review or the current month, throughout the digest.

1.1 Data Revision

The current monthly digest is based on preliminary figures with regard to the reference period. Revisions in the monthly trade statistics data are always necessary because they allow for the incorporation of the additional and improved data that were not available at the previous release date, or when there are late customs duty assessments. Revisions are made on a monthly basis when monthly data files are uploaded into the database, thereby bringing additional information for previous months. In some instances, revisions are negligible, while notably significant in others.

The inclusion of additional data in March 2024 resulted in the upward revision to both trade flows for February 2024. Imports increased by 2.2 percent (P159.8 million) while total exports rose by 20.2 percent (P583.5 million). **Table A** shows revised data comparing figures in the February 2024 digest and the current.

Table A: Data Revision: February 2024 (Million Pula)

| Period | As at February 2024 Digest (P Million) | | | As at March 2024 Digest (P Million) | | | Difference (P million) | | | Difference as % | | |
|--------|---|------------------|------------------|--|------------------|------------------|------------------------|------------------|------------------|------------------|------------------|------------------|
| | Imports (CIF) | Total Exports | Trade Balance | Imports (CIF) | Total Exports | Trade Balance | Imports (CIF) | Total Exports | Trade Balance | Imports (CIF) | Total Exports | Trade Balance |
| Feb | 7,260.2 | 2,887.3 | (4,372.9) | 7,420.0 | 3,470.8 | (3,949.2) | 159.8 | 583.5 | 423.7 | 2.2 | 20.2 | (9.7) |

() denotes negative

1.2 Imports

Imports are valued at Cost, Insurance & Freight (CIF), the price includes the value of goods, insurance and freight costs required for delivering the commodities to the destination, but excludes customs or any other duties paid on arrival at the border of the importing country.

Botswana received imports amounting to P6, 991.0 million during March 2024, registering a decrease of 5.8 percent (P429.0 million) from the revised February 2024 figure of P7, 420.0 million despite an increase in Diamonds imports by 61.7 percent (P466.8 million). The decrease was mainly attributed to the decline in the importation of Fuel, Machinery & Electrical Equipment and Chemicals & Rubber Products. Fuel imports declined by 17.6 percent (P285.7 million), from P1, 622.8 million in February 2024 to P1, 337.1 million recorded in March 2024. Machinery & Electrical equipment recorded a decrease of 21.1 percent (P259.9 million), from P1, 233.8 million to P973.9 million while Chemicals & Rubber Products dropped by 16.1 percent (P141.4 million), from P878.4 million to P736.9 million during the period under consideration (**Table 2.1**).

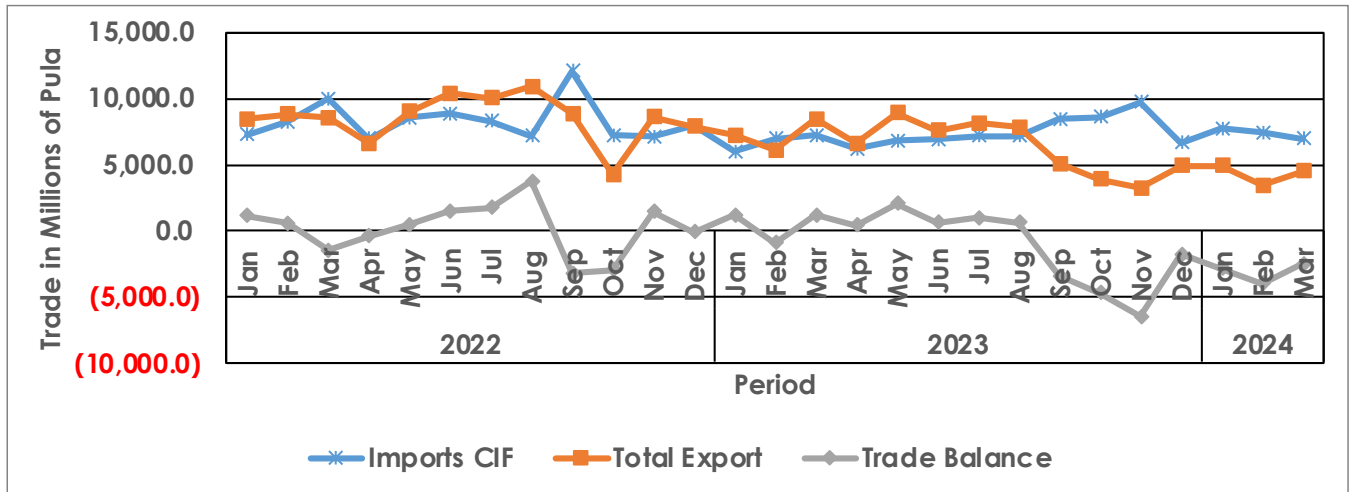
1.3 Total Exports

Botswana's export earnings rose by 30.2 percent (P1, 047.7 million) from the revised value of P3, 470.8 million recorded in February 2024 to P4, 518.5 million during the period under review. Diamonds exports rose by 51.4 percent (P1, 028.8 million), playing a pivotal role in the overall increase of total exports as shown in **Table 2.2**.

1.4 Trade Balance

Botswana's trade has persistently recorded trade deficit since September 2023. In March 2024, the country recorded a deficit of P2, 472.5. **Chart 1.0** displays the graphical presentation of the trade balance from January 2022 to March 2024.

Chart 1.0: Total International Merchandise Trade – January 2022 to March 2024 (Million Pula)



2.0 Trade by Principal Commodity Groups

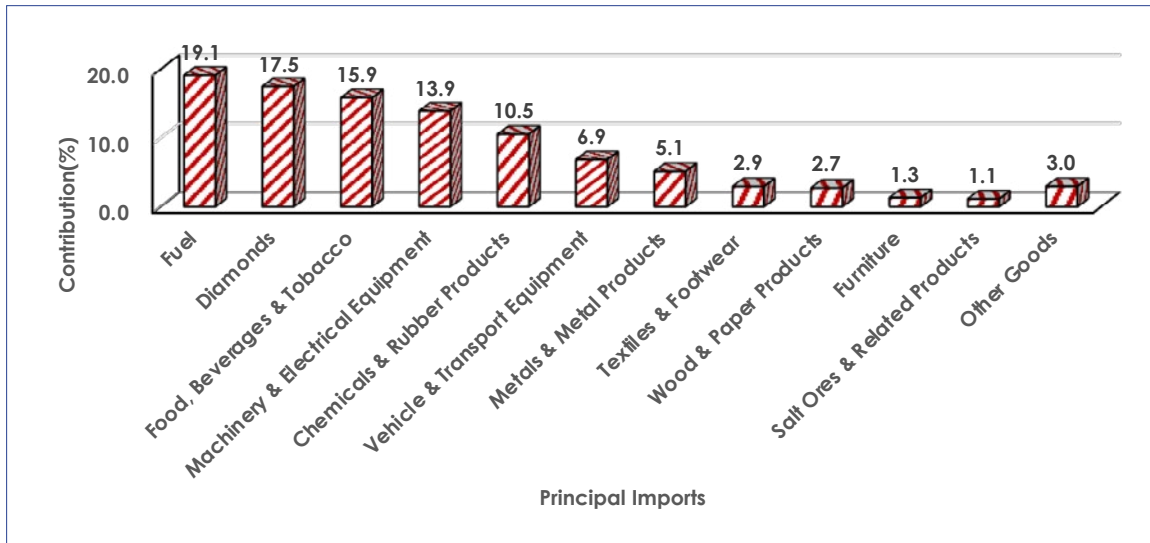
Principal commodity groups refer to selections of related commodities grouped together to form major groups. Commodities forming a group may be of related chapters or commodities, for example 'Vehicles & Transport Equipment' combines vehicles and other equipment used for transport purposes.

In cases where it becomes a challenge to come up with further groups of related chapters or commodities, the remaining commodities are grouped together under the general category called 'Other'. This occurs when a commodity group's contribution to the total is minimal.

2.1 Principal Imports

Botswana received imports valued at P6, 991.0 million in March 2024. The top imported groups were Fuel; Diamonds and Food, Beverages & Tobacco. Fuel contributed 19.1 percent (P1, 337.1 million) followed by Diamonds and Food, Beverages & Tobacco at 17.5 percent (P1, 223.6 million) and 15.9 percent (P1, 109.0 million) to total imports respectively. Machinery & Electrical Equipment and Chemicals & Rubber Products were also among Botswana's leading imported groups, having contributed 13.9 percent (P973.9 million) and 10.5 percent (P736.9 million) respectively. Contributions made by other commodity groups can be viewed in [Table 2.1](#) and [Chart 2.1](#).

Chart 2.1: Composition of Principal Imports – March 2024 (Percentage)

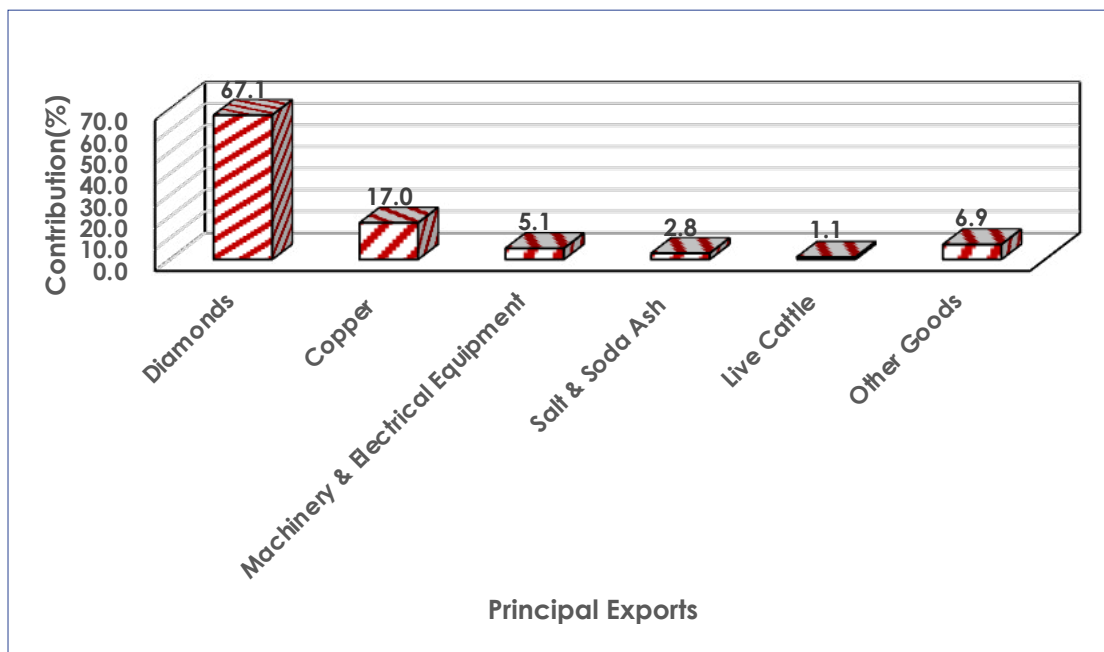


Note: 'Other Goods' here includes any other goods not displayed as in Table 2.1

2.2 Principal Exports

Botswana exported merchandise amounting to P4, 518.5 million in March 2024. Diamonds was the leading export commodity group with a contribution of 67.1 percent (P3, 030.7 million), followed by Copper with contributions of 17.0 percent (P766.7 million). Contributions made by other commodity groups are presented in **Table 2.2** and **Chart 2.2**.

Chart 2.2 Composition of Principal Exports – March 2024 (Percentage)



Note: "Other Goods" here includes any other goods not displayed as in Table 2.2

3.0 Direction of Trade

The direction of Trade analyses the value of merchandise trade disaggregated according to a country's primary trading partners. As a result the direction of trade outlines the last known destination for exports and sources of imports. Only major trading partners are considered individually, while smaller trading partners are grouped together under a general category. Trade by major partner countries, regions and principal commodity groups for imports and exports, during March 2024 appears in **Table 3.1 A** and **Table 3.2A**, respectively. **Table 3.1B** (imports) and **Table 3.2B** (exports) show percentage distributions for major sources and destinations by principal commodity groups during the same month.

3.1 Imports by Major Trading Partner Countries and Regions

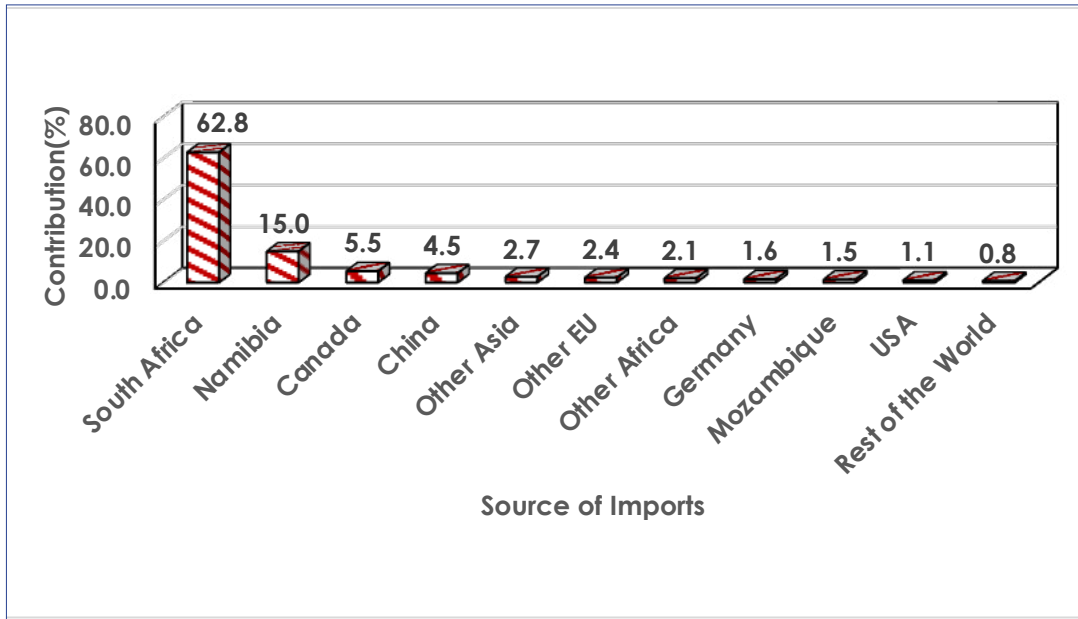
Botswana imported goods worth P6, 991.0 million, with the **SACU** region contributing largest at 78.2 percent (P5, 466.5 million) to the total, during the period under review. Fuel and Food, Beverages & Tobacco were the most imported commodity groups from the customs union accounting for 22.6 percent (P1, 237.2 million) and 18.7 percent (P1, 022.4 million), respectively. Diamonds and Chemicals & Rubber Products made contributions of 14.1 percent (P771.3 million) and 10.9 percent (P595.6 million) to total imports from the union respectively. Among the **SACU** member states, South Africa was the largest source at 62.8 percent (P4, 393.0 million) of total imports. Namibia followed with 15.0 percent (P1, 049.7 million) of total imports. These are displayed in **Table 3.1A** and **Table 3.1B**.

During the period of assessment, Botswana imported goods totalling P506.5 million from Asia, which accounted for 7.2 percent of the total imports. The main commodity groups imported were Machinery & Electrical Equipment and Diamonds with contributions of 52.8 percent (P267.5 million) and 10.6 percent (P53.7 million) of total imports, respectively. In Asia, China contributed highest at 4.5 percent (P317.2 million) to total imports respectively. Figures are shown in **Table 3.1A** and **Table 3.1B**.

Botswana received imports from the **EU** valued at P279.2 million, contributing 4.0 percent of the total imports. Machinery & Electrical Equipment and Chemicals & Rubber Products were the key commodity groups imported from the Union at 29.4 percent (P82.0 million) and 26.8 percent (P74.7 million) respectively. Germany made contribution of 1.6 percent (P112.8 million) to the total imports (**Table 3.1A** and **Table 3.1B**).

Imports accounting for 5.5 percent (P382.9 million) of total imports were sourced from Canada during the month under review. The main import commodity group was Diamonds at 96.7 percent (P370.1 million) of total imports from that country. The **USA** supplied imports worth P73.6 million, accounting for 1.1 percent of Botswana's total imports. Machinery & Electrical Equipment and Chemicals & rubber Products being the main commodities supplied at 44.0 percent (P32.4 million) and 20.7 percent (P15.2 million) respectively. Sources of imports during March 2024 can be viewed in **Table 3.1 A** and **Chart 3.1**.

Chart 3.1: Imports by Major Trading Partner Countries & Regions – March 2024



'Rest of the World' includes all other Countries or Regions not specified as in Table 3.1A

3.2 Exports by Major Trading Partner Countries and Regions

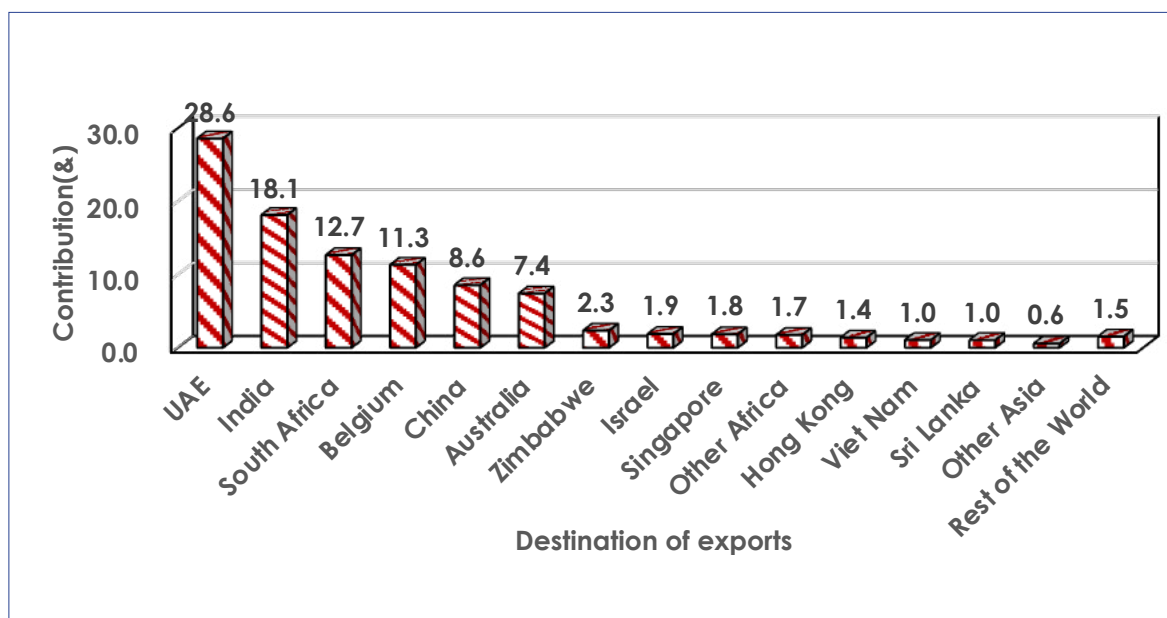
During the period under review, Botswana exported goods valued at P4, 518.5 million. Exports to Asia were the highest at 63.0 percent (P2, 845.5 million), rendering the block the main destination market for Botswana. Top exports destinations within Asia were the **UAE**, India and China at 28.6 percent (P1, 291.5 million), 18.1 percent (P819.7 million) and 8.6 percent (P386.6 million) of total exports, respectively. Diamonds and Copper were the major commodity groups exported to Asia, at 86.1 percent (P2, 450.2 million) and 13.6 percent (P386.6 million) respectively as shown in **Table 3.2A** and **Table 3.2B**.

Exports destined to the **SACU** region accounted for 13.4 percent (P605.4 million) of total exports during the month under review. Machinery & Electrical Equipment and Salt & Soda Ash were the major commodity groups exported to the customs union. These accounted for 34.5 percent (P208.9 million) and 18.4 percent (P111.2 million) of total exports to the regional block respectively. South Africa was the main recipient of exports to **SACU**, at 12.7 percent (P572.0 million) of total exports, as in **Table 3.2A**.

The **EU** received exports amounting to P513.8 million, reflecting 11.4 percent of total exports in March 2024. Belgium received most of exports destined for the union, at 11.3 percent (P511.8 million) of total exports. Diamonds was the main commodity group exported to the **EU** at 99.6 percent (P511.6 million), as displayed in **Table 3.2A** and **Table 3.2B**.

During March 2024, Australia received exports worth P335.0 million, representing 7.4 percent of Botswana's total exports. Copper was the sole commodity group exported to Australia.. Contributions made by other commodity groups are presented in **Table 3.2A** and **Table 3.2B**.

Chart 3.2: Exports by Major Trading Partner Countries & Regions – March 2024



Rest of the World includes all other Countries or Regions not specified as in Table 3.2

4.0 Imports and Exports by Top imported and Exported Commodities

The top traded commodities for both flows are presented in **Table 4.1A** for imports and **Table 4.1B** for exports for March 2024. This is intended to present the most traded goods (excluding Diamonds) with a view to guiding users on opportunities to produce commodities for import substitution, possible exportation and economic diversification.

5.0 Imports and Exports by Mode of Transport

Trade by mode of transport refers to categorising trade activities based on the method of transportation used to move goods between countries or regions. This classification helps in understanding the flow of goods across borders and can provide insights into trade patterns, identifying bottlenecks and infrastructure needs and can be used as guidance in formulating transport policies. Active modes of transport mainly used in Botswana for movement of international merchandise trade are Air, Road and Rail. **Table B** presents statistics relating to modes of transport while **Chart B** gives the graphical illustration.

During the month under review, goods valued at P3, 132.1 million, representing 69.3 percent of total exports, were transported by Air. Goods exported by Road and Rail accounted for 30.3 percent (P1, 368.9 million) and 0.4 percent (P16.5 million) of total exports, respectively.

Imports representing 74.7 percent (P5, 222.3 million) of the monthly total were transported into the country by Road during the month under review.

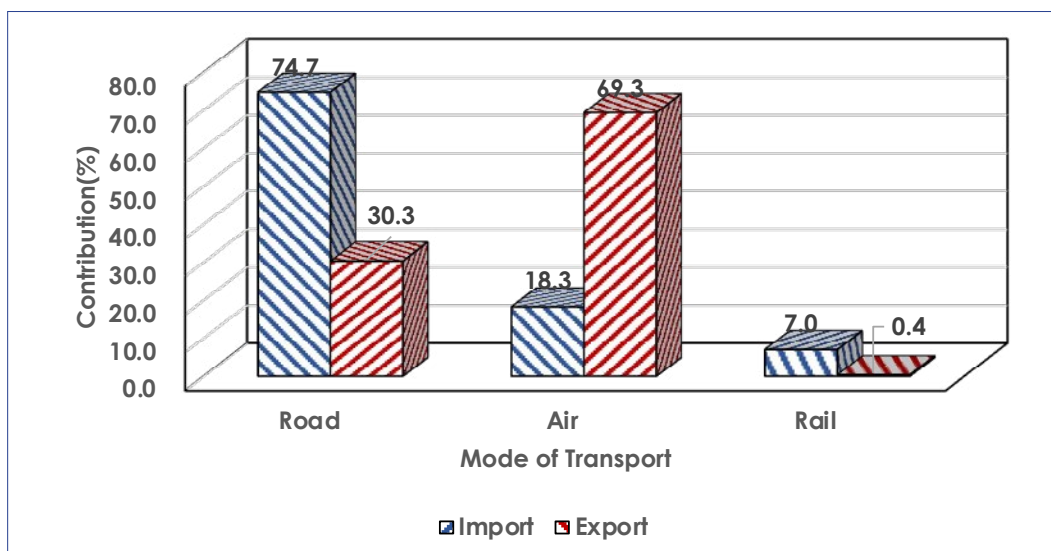
Imports transported by Air amounted to P1, 276.6 million, representing 18.3 percent of the total, while imports transported by Rail, worth 490.5 million, constituted 7.0 percent of the total.

Table B: Trade by Mode of Transport – March 2024 (Million Pula)

| Flow Type | Imports | | Total Exports | |
|-------------------|----------------|--------------|----------------|--------------|
| Mode of Transport | BW Pula | % | BW Pula | % |
| Road | 5,222.3 | 74.7 | 1,368.9 | 30.3 |
| Air | 1,276.6 | 18.3 | 3,132.1 | 69.3 |
| Rail | 490.5 | 7.0 | 16.5 | 0.4 |
| Other | 1.5 | 0.0 | 0.0 | 0.0 |
| Total | 6,991.0 | 100.0 | 4,517.5 | 100.0 |

"Other Modes..." includes Inland water ways and Postal service transport

Chart B: Trade by Mode of Transport – March 2024 (Percentage)



6.0 Transit Trade

Transit trade refers to the movement of goods from one country to another through a third country, without the goods being subject to customs duties and other import restrictions in the intermediary country. Essentially, it involves the transportation of goods across a country that lies between the country of origin and the final destination. Countries that serve as transit hubs often provide infrastructure and services to facilitate transit trade. These countries may benefit economically from transit trade through fees, tariffs, or other charges associated with transportation services or by stimulating economic activity related to trade and transportation.

Overall, the purpose of transit trade is to overcome geographical, logistical, and economic constraints to facilitate the movement of goods between countries or regions efficiently, cost-effectively and securely. It plays a crucial role in promoting international trade, economic development, and regional integration.

Countries involved in transit trade typically have agreements and protocols in place to govern the movement of goods through their territory without the imposition of customs duties and other trade barriers. This helps to streamline the transportation of goods and reduce logistical challenges for businesses engaged in international trade.

Transit trade is subject to compliance with specific regulations and documentation requirements to ensure the proper monitoring and control of the movement of goods. Violations or misuse of transit trade arrangements can lead to penalties and legal consequences.

During March 2024, goods amounting to P22, 981.8 million transited through Botswana destined for various countries. Martins Drift border post, Kazungula bridge and Mamuno were the major border posts through which Goods transited, handled goods accounting for 61.2 percent (P14, 065.6 million), 23.0 percent (P5, 285.4 million) and 7.8 percent (P1, 786.9 million) respectively, as displayed in **Table C1** and **Chart C1**.

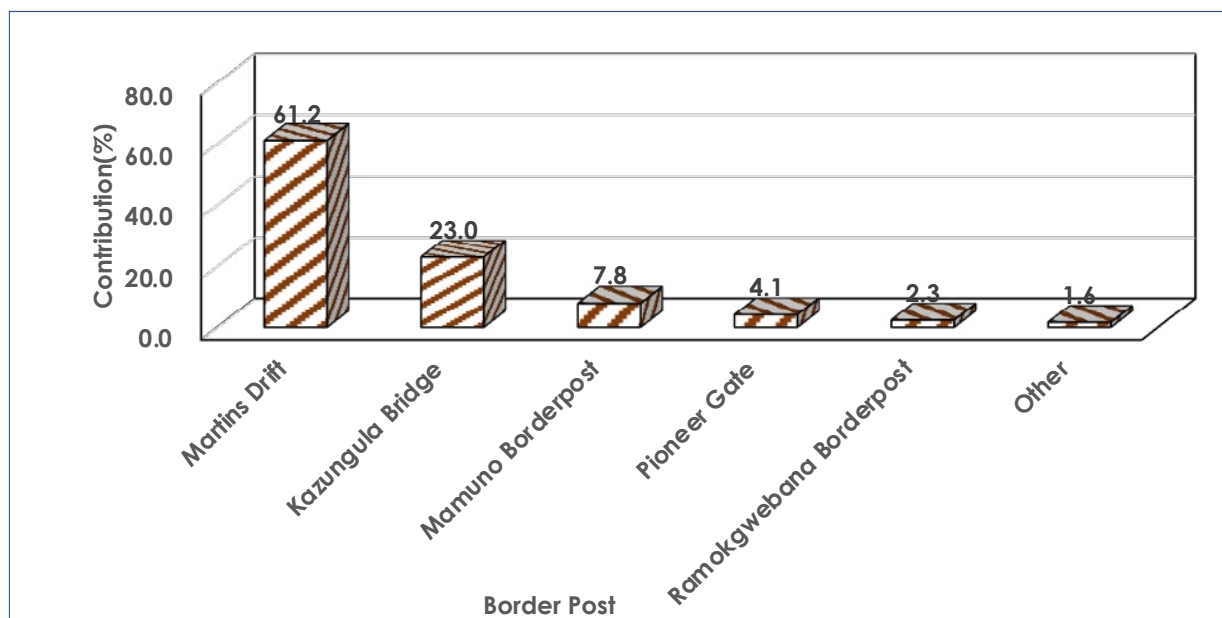
The top most transiting goods were chapters 74 (Copper and articles thereof) at 32.7 percent (P7, 521.5 million) and chapter 28 (Inorganic chemicals; organic and inorganic compounds of precious metals; of rare earth metals, of radio-active elements and of isotopes) at 24.0 percent (P5, 505.6 million). Chapter 99 (Commodities not specified according to kind) followed with a contribution of 16.5 percent (P3, 789.4 million), as shown in **Table C2** and **Chart C2**.

Table C1: Transit Trade by Border Post – March 2024 (Million Pula)

| Border Post | BW Pula (Million) | % |
|-------------------------|-------------------|--------------|
| Martins Drift | 14,065.6 | 61.2 |
| Kazungula Bridge | 5,285.4 | 23.0 |
| Mamuno Borderpost | 1,786.9 | 7.8 |
| Pioneer Gate | 944.5 | 4.1 |
| Ramokgwebana Borderpost | 533.0 | 2.3 |
| Other | 366.5 | 1.6 |
| Total | 22,981.8 | 100.0 |

"Other Border Posts..." includes all border posts in Botswana not displayed on Table C1

Chart C1: Transit Trade by Border Post – March 2024 (Percentage)

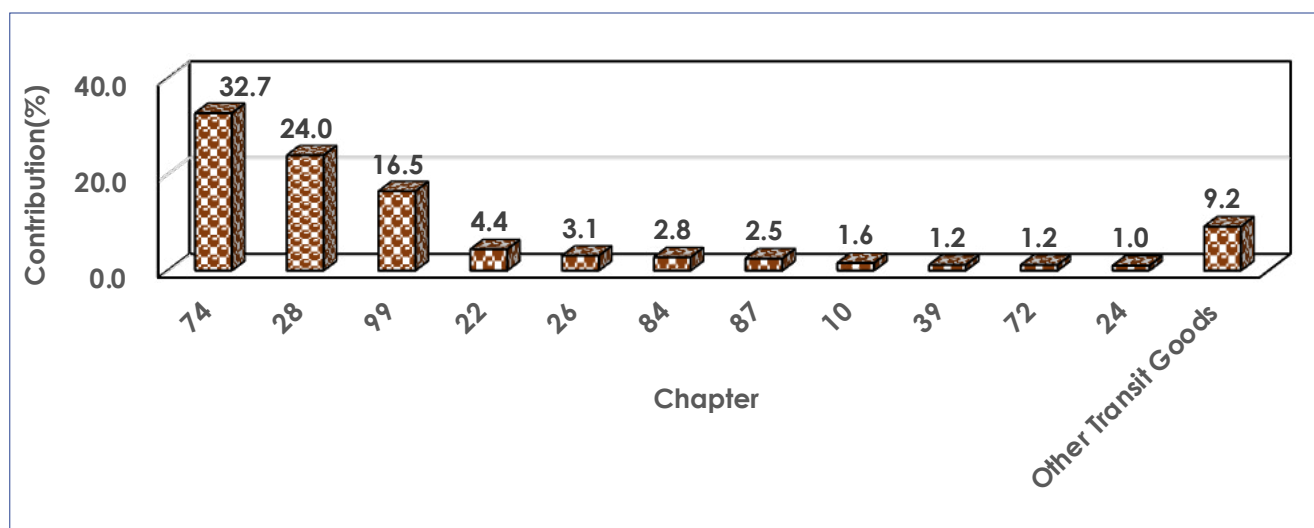


"Other Border Posts..." includes all border posts in Botswana not displayed on Chart C1

Table C2: Transit by Chapter – March 2024 (Million Pula)

| Rank | Chapter | Description | BW Pula (Million) | % |
|----------------------------|---------|--|-------------------|--------------|
| 1 | 74 | Copper and articles thereof | 7,521.5 | 32.7 |
| 2 | 28 | Inorganic chemicals; organic and inorganic compounds of precious metals; of rare earth metals, of radioactive elements and of isotopes | 5,505.6 | 24.0 |
| 3 | 99 | Commodities not specified according to kind | 3,789.4 | 16.5 |
| 4 | 22 | Beverages, spirits and vinegar | 1,012.6 | 4.4 |
| 5 | 26 | Ores, slag and ash | 709.2 | 3.1 |
| 6 | 84 | Nuclear reactors, boilers, machinery and mechanical appliances; parts thereof | 632.1 | 2.8 |
| 7 | 87 | Vehicles; other than railway or tramway rolling stock, and parts and accessories thereof | 575.5 | 2.5 |
| 8 | 10 | Cereals | 362.6 | 1.6 |
| 9 | 39 | Plastics and articles thereof | 271.1 | 1.2 |
| 10 | 72 | Iron and steel | 266.7 | 1.2 |
| 11 | 24 | Tobacco and manufactured tobacco substitutes | 230.1 | 1.0 |
| Other Transit Goods | | | 2,105.6 | 9.2 |
| Total Transit Goods | | | 22,981.8 | 100.0 |

Chart C2: Transit Trade by Chapter – March 2024 (Percentage)



Other..." includes all chapters not displayed on Chart C2

Table 1.0: Total Merchandise Trade – January 2022 to March 2024 (Million Pula)

| Period \ Indicators | Imports CIF | Imports FOB | Freight | Insurance | Domestic Exports | Re-Exports | Total Exports | Trade Balance |
|---------------------|-----------------|-----------------|----------------|-------------|------------------|----------------|------------------|-------------------|
| Jan_2022 | 7,288.5 | 6,974.5 | 312.2 | 1.9 | 8,446.3 | 0.0 | 8,446.3 | 1,157.8 |
| Feb | 8,277.2 | 7,936.8 | 338.2 | 2.2 | 8,842.9 | 0.1 | 8,843.0 | 565.8 |
| Mar | 10,020.5 | 9,625.8 | 392.3 | 2.4 | 8,550.0 | 0.3 | 8,550.2 | (1,470.3) |
| Q1 | 25,586.3 | 24,537.1 | 1,042.6 | 6.5 | 25,839.2 | 0.3 | 25,839.6 | 253.3 |
| Apr | 6,979.2 | 6,672.3 | 304.9 | 1.9 | 6,606.8 | | 6,606.8 | (372.3) |
| May | 8,578.0 | 8,253.4 | 322.9 | 1.7 | 9,045.2 | 0.1 | 9,045.3 | 467.3 |
| Jun | 8,883.1 | 8,348.6 | 532.6 | 1.8 | 10,403.3 | 1.6 | 10,404.9 | 1,521.9 |
| Q2 | 24,440.3 | 23,274.3 | 1,160.5 | 5.4 | 26,055.3 | 1.7 | 26,057.1 | 1,616.8 |
| Jul | 8,286.5 | 7,935.7 | 349.2 | 1.6 | 10,061.1 | 0.9 | 10,062.0 | 1,775.5 |
| Aug | 7,167.3 | 6,825.0 | 339.7 | 2.5 | 10,913.0 | 1.7 | 10,914.7 | 3,747.4 |
| Sep | 12,083.0 | 11,749.0 | 331.9 | 2.0 | 8,887.6 | 0.0 | 8,887.6 | (3,195.4) |
| Q3 | 27,536.7 | 26,509.8 | 1,020.9 | 6.1 | 29,861.7 | 2.6 | 29,864.3 | 2,327.6 |
| Oct | 7,233.0 | 6,920.6 | 310.9 | 1.4 | 4,268.7 | 0.0 | 4,268.7 | (2,964.3) |
| Nov | 7,144.0 | 6,806.6 | 335.7 | 1.7 | 8,573.4 | 22.6 | 8,596.0 | 1,451.9 |
| Dec | 7,959.5 | 7,661.4 | 295.9 | 2.2 | 7,899.5 | 0.7 | 7,900.2 | (59.4) |
| Q4 | 22,336.6 | 21,388.7 | 942.5 | 5.4 | 20,741.6 | 23.3 | 20,764.9 | (1,571.7) |
| Total_2022 | 99,899.9 | 95,709.9 | 4,166.4 | 23.5 | 102,497.8 | 28.0 | 102,525.8 | 2,625.9 |
| Jan_2023 | 6,030.7 | 5,749.9 | 279.3 | 1.6 | 7,257.6 | | 7,257.6 | 1,226.8 |
| Feb | 7,002.7 | 6,708.0 | 293.2 | 1.6 | 6,094.4 | 6.1 | 6,100.5 | (902.2) |
| Mar | 7,252.2 | 6,934.2 | 316.2 | 1.9 | 8,449.5 | 5.7 | 8,455.2 | 1,203.0 |
| Q1 | 20,285.7 | 19,392.0 | 888.6 | 5.1 | 21,801.5 | 11.7 | 21,813.3 | 1,527.6 |
| Apr | 6,215.9 | 5,937.8 | 276.7 | 1.4 | 6,633.6 | 2.7 | 6,636.3 | 420.4 |
| May | 6,841.9 | 6,528.6 | 312.3 | 1.1 | 8,919.2 | 3.4 | 8,922.6 | 2,080.7 |
| Jun | 6,948.0 | 6,621.9 | 324.1 | 2.1 | 7,596.2 | 0.5 | 7,596.7 | 648.7 |
| Q2 | 20,005.9 | 19,088.3 | 913.0 | 4.6 | 23,149.1 | 6.6 | 23,155.7 | 3,149.8 |
| Jul | 7,172.6 | 6,852.9 | 318.0 | 1.7 | 8,159.7 | 0.1 | 8,159.8 | 987.2 |
| Aug | 7,199.0 | 6,863.5 | 333.6 | 1.9 | 7,849.4 | 0.5 | 7,849.8 | 650.8 |
| Sep | 8,471.3 | 8,127.8 | 341.9 | 1.6 | 5,093.7 | 0.1 | 5,093.8 | (3,377.5) |
| Q3 | 22,842.9 | 21,844.2 | 993.5 | 5.2 | 21,102.8 | 0.6 | 21,103.4 | (1,739.5) |
| Oct | 8,597.6 | 8,241.9 | 354.2 | 1.6 | 3,909.7 | 3.7 | 3,913.4 | (4,684.3) |
| Nov | 9,737.7 | 9,364.1 | 370.8 | 2.8 | 3,242.7 | 0.4 | 3,243.1 | (6,494.6) |
| Dec | 6,685.7 | 6,388.9 | 294.8 | 2.0 | 4,944.0 | 0.8 | 4,944.8 | (1,740.9) |
| Q4 | 25,021.0 | 23,994.9 | 1,019.8 | 6.3 | 12,096.3 | 5.0 | 12,101.3 | (12,919.7) |
| Total_2023 | 88,155.5 | 84,319.4 | 3,815.0 | 21.1 | 78,149.7 | 23.9 | 78,173.7 | (9,981.8) |
| Jan_2024 | 7,733.7 | 7,414.7 | 316.8 | 2.2 | 4,913.8 | 0.0 | 4,913.8 | (2,819.9) |
| Feb | 7,420.0 | 7,089.6 | 328.7 | 1.8 | 3,470.6 | 0.2 | 3,470.8 | (3,949.2) |
| Mar | 6,991.0 | 6,700.2 | 288.9 | 1.8 | 4,504.1 | 14.4 | 4,518.5 | (2,472.5) |
| Q1 | 22,144.8 | 21,204.5 | 934.4 | 5.9 | 12,888.5 | 14.6 | 12,903.1 | (9,241.7) |
| Change | (429.0) | (389.3) | (39.8) | 0.1 | 1,033.5 | 14.1 | 1,047.7 | 1,476.7 |
| % Change | (5.8) | (5.5) | (12.1) | 3.8 | 29.8 | 6,119.5 | 30.2 | (37.4) |

Change: Difference between the Current and Previous month

Table 2.1: Principal Imports Commodity Groups – January 2022 to March 2024 (Million Pula)

| Period \ HS | Chemicals & Rubber Products | Diamonds | Food, Beverages & Tobacco | Fuel | Furniture | Machinery & Electrical Equipment | Metals & Metal Products | Salt Ores & Related Products | Textiles & Footwear | Vehicles & Transport Equipment | Wood & Paper Products | Other Goods | Total Goods |
|----------------------|-----------------------------|-----------------|---------------------------|-----------------|--------------|----------------------------------|-------------------------|------------------------------|---------------------|--------------------------------|-----------------------|----------------|-----------------|
| Jan_2022 | 1,075.5 | 2,225.2 | 877.0 | 1,089.3 | 39.3 | 788.9 | 281.1 | 60.4 | 132.1 | 429.8 | 130.9 | 159.0 | 7,288.5 |
| Feb | 628.7 | 3,295.7 | 876.5 | 1,046.3 | 61.9 | 1,003.3 | 351.1 | 58.9 | 185.0 | 429.2 | 142.2 | 198.3 | 8,277.2 |
| Mar | 859.2 | 3,712.3 | 1,183.1 | 1,437.6 | 68.3 | 1,053.1 | 509.5 | 63.7 | 212.3 | 514.2 | 165.7 | 241.5 | 10,020.5 |
| Q1 | 2,563.4 | 9,233.3 | 2,936.6 | 3,573.3 | 169.4 | 2,845.3 | 1,141.8 | 183.0 | 529.4 | 1,373.1 | 438.8 | 598.9 | 25,586.3 |
| Apr | 673.3 | 1,674.8 | 903.3 | 1,410.2 | 61.4 | 931.9 | 373.0 | 58.3 | 165.3 | 392.6 | 140.8 | 194.2 | 6,979.2 |
| May | 848.8 | 2,742.7 | 900.1 | 1,439.1 | 105.4 | 1,106.2 | 409.1 | 70.1 | 182.1 | 388.9 | 150.8 | 234.7 | 8,578.0 |
| Jun | 809.0 | 1,128.2 | 2,314.6 | 1,723.0 | 69.7 | 1,136.8 | 356.0 | 68.1 | 166.4 | 720.4 | 148.4 | 242.5 | 8,883.1 |
| Q2 | 2,331.1 | 5,545.6 | 4,118.0 | 4,572.3 | 236.5 | 3,174.9 | 1,138.0 | 196.6 | 513.8 | 1,501.9 | 440.0 | 671.4 | 24,440.3 |
| Jul | 695.2 | 1,548.2 | 978.8 | 2,295.6 | 89.4 | 1,022.4 | 369.4 | 67.9 | 204.4 | 620.0 | 163.7 | 231.4 | 8,286.5 |
| Aug | 738.1 | 903.9 | 1,047.5 | 1,734.4 | 72.9 | 965.4 | 384.0 | 78.6 | 215.9 | 514.8 | 183.1 | 328.7 | 7,167.3 |
| Sep | 854.5 | 5,769.1 | 1,038.5 | 1,469.3 | 74.9 | 1,100.7 | 391.2 | 65.2 | 215.9 | 629.5 | 194.8 | 279.6 | 12,083.0 |
| Q3 | 2,287.7 | 8,221.2 | 3,064.8 | 5,499.2 | 237.2 | 3,088.5 | 1,144.6 | 211.7 | 636.2 | 1,764.2 | 541.6 | 839.7 | 27,536.7 |
| Oct | 750.3 | 1,309.1 | 1,032.6 | 1,499.6 | 80.9 | 1,066.5 | 326.6 | 61.3 | 203.7 | 471.5 | 160.9 | 270.0 | 7,233.0 |
| Nov | 970.2 | 641.5 | 1,175.9 | 1,521.8 | 83.0 | 1,070.4 | 381.7 | 63.0 | 265.5 | 484.9 | 193.9 | 292.3 | 7,144.0 |
| Dec | 767.2 | 2,351.7 | 1,013.6 | 1,670.7 | 77.4 | 751.0 | 313.3 | 50.5 | 167.3 | 367.6 | 157.9 | 271.2 | 7,959.5 |
| Q4 | 2,487.8 | 4,302.3 | 3,222.2 | 4,692.0 | 241.3 | 2,887.8 | 1,021.6 | 174.7 | 636.4 | 1,324.1 | 512.8 | 833.5 | 22,336.6 |
| Total_2022 | 9,670.0 | 27,302.5 | 13,341.5 | 18,336.8 | 884.5 | 11,996.5 | 4,446.0 | 766.0 | 2,315.9 | 5,963.3 | 1,933.3 | 2,943.5 | 99,899.9 |
| Jan_2023 | 640.3 | 988.8 | 907.0 | 1,338.4 | 46.6 | 850.5 | 279.7 | 56.3 | 133.4 | 418.9 | 134.9 | 235.8 | 6,030.7 |
| Feb | 771.5 | 1,352.4 | 1,259.9 | 1,288.5 | 57.3 | 894.3 | 376.9 | 46.6 | 180.8 | 421.3 | 142.9 | 210.3 | 7,002.7 |
| Mar | 795.4 | 818.8 | 1,221.3 | 1,511.1 | 68.3 | 1,111.2 | 394.7 | 65.4 | 235.4 | 565.1 | 179.3 | 286.1 | 7,252.2 |
| Q1 | 2,207.2 | 3,160.0 | 3,388.3 | 4,138.0 | 172.2 | 2,856.0 | 1,051.4 | 168.3 | 549.6 | 1,405.3 | 457.2 | 732.1 | 20,285.7 |
| Apr | 768.6 | 765.9 | 1,093.7 | 1,366.8 | 55.9 | 817.1 | 352.0 | 63.6 | 197.8 | 382.5 | 140.3 | 211.7 | 6,215.9 |
| May | 902.1 | 874.4 | 1,013.1 | 1,311.5 | 75.3 | 1,058.4 | 391.2 | 77.3 | 187.3 | 550.2 | 161.8 | 239.4 | 6,841.9 |
| Jun | 904.4 | 779.6 | 1,153.2 | 1,321.9 | 80.3 | 1,120.5 | 422.4 | 100.1 | 153.4 | 528.0 | 176.9 | 207.4 | 6,948.0 |
| Q2 | 2,575.1 | 2,419.9 | 3,260.0 | 4,000.1 | 211.6 | 2,996.0 | 1,165.6 | 240.9 | 538.5 | 1,460.7 | 479.1 | 658.5 | 20,005.9 |
| Jul | 823.9 | 811.5 | 1,077.1 | 1,437.5 | 67.3 | 1,014.1 | 418.1 | 63.4 | 173.8 | 873.6 | 167.4 | 244.8 | 7,172.6 |
| Aug | 916.9 | 597.0 | 1,255.8 | 1,486.1 | 79.8 | 1,132.6 | 431.7 | 74.8 | 204.6 | 572.8 | 183.6 | 263.4 | 7,199.0 |
| Sep | 779.5 | 1,435.5 | 1,321.3 | 1,823.0 | 87.8 | 1,186.2 | 449.3 | 64.7 | 228.8 | 625.3 | 171.8 | 298.2 | 8,471.3 |
| Q3 | 2,520.2 | 2,844.0 | 3,654.1 | 4,746.5 | 235.0 | 3,332.9 | 1,299.1 | 202.9 | 607.3 | 2,071.7 | 522.8 | 806.5 | 22,842.9 |
| Oct | 859.2 | 1,436.6 | 1,474.9 | 1,798.8 | 84.6 | 1,117.8 | 409.5 | 61.5 | 267.5 | 561.6 | 186.1 | 339.5 | 8,597.6 |
| Nov | 1,151.7 | 2,276.0 | 1,436.5 | 1,854.9 | 89.7 | 1,131.3 | 419.2 | 68.4 | 277.5 | 576.6 | 198.0 | 257.9 | 9,737.7 |
| Dec | 760.3 | 1,097.0 | 1,045.0 | 1,404.0 | 79.6 | 856.6 | 366.9 | 82.7 | 161.9 | 468.9 | 159.2 | 203.5 | 6,685.7 |
| Q4 | 2,771.2 | 4,809.5 | 3,956.4 | 5,057.7 | 254.0 | 3,105.7 | 1,195.7 | 212.5 | 706.9 | 1,607.1 | 543.4 | 800.9 | 25,021.0 |
| Total_2023 | 10,073.7 | 13,233.5 | 14,258.8 | 17,942.3 | 872.7 | 12,290.6 | 4,711.7 | 824.6 | 2,402.2 | 6,544.9 | 2,002.4 | 2,998.1 | 88,155.5 |
| Jan_2024 | 914.5 | 1,826.0 | 1,107.0 | 1,355.3 | 45.9 | 830.6 | 323.8 | 94.2 | 139.2 | 760.8 | 147.1 | 189.3 | 7,733.7 |
| Feb | 878.4 | 756.8 | 1,114.9 | 1,622.8 | 88.7 | 1,233.8 | 428.1 | 76.1 | 203.8 | 589.9 | 176.7 | 250.0 | 7,420.0 |
| Mar | 736.9 | 1,223.6 | 1,109.0 | 1,337.1 | 91.0 | 973.9 | 358.9 | 78.0 | 205.6 | 479.3 | 190.3 | 207.5 | 6,991.0 |
| Q1 | 2,529.9 | 3,806.4 | 3,330.8 | 4,315.2 | 225.6 | 3,038.3 | 1,110.8 | 248.3 | 548.7 | 1,830.0 | 514.1 | 646.8 | 22,144.8 |
| Change | (141.4) | 466.8 | (5.9) | (285.7) | 2.3 | (259.9) | (69.3) | 1.9 | 1.8 | (110.6) | 13.5 | (42.5) | (429.0) |
| %Contribution | | | | | | | | | | | | | |
| 2023 | 11.4 | 15.0 | 16.2 | 20.4 | 1.0 | 13.9 | 5.3 | 0.9 | 2.7 | 7.4 | 2.3 | 3.4 | 100.0 |
| Feb | 11.8 | 10.2 | 15.0 | 21.9 | 1.2 | 16.6 | 5.8 | 1.0 | 2.7 | 7.9 | 2.4 | 3.4 | 100.0 |
| Mar | 10.5 | 17.5 | 15.9 | 19.1 | 1.3 | 13.9 | 5.1 | 1.1 | 2.9 | 6.9 | 2.7 | 3.0 | 100.0 |
| % Change | (16.1) | 61.7 | (0.5) | (17.6) | 2.6 | (21.1) | (16.2) | 2.5 | 0.9 | (18.7) | 7.7 | (17.0) | (5.8) |

Change: Difference between the Current and Previous month

Table 2.2 Principal Export Commodity Groups – January 2022 to March 2024 (Million Pula)

| Period \ HS | Coal | Copper | Diamonds | Gold | Iron & Steel Products | Live Cattle | Machinery & Electrical Equipment | Meat & Meat Products | Plastic & Plastic Products | Salt & Soda Ash | Textiles | Vehicle & Transport Equipment | Other Goods | Total Goods |
|----------------------|--------------|----------------|-----------------|---------------|-----------------------|----------------|----------------------------------|----------------------|----------------------------|-----------------|--------------|-------------------------------|----------------|------------------|
| Jan_2022 | 29.7 | 200.7 | 7,702.8 | 35.8 | 24.3 | 106.1 | 94.5 | 3.8 | 22.9 | 68.5 | 16.1 | 22.3 | 118.7 | 8,446.3 |
| Feb | 18.2 | 208.7 | 8,060.0 | 19.2 | 17.4 | 107.0 | 181.0 | 8.4 | 25.7 | 59.8 | 17.5 | 39.4 | 80.7 | 8,843.0 |
| Mar | 35.1 | 244.0 | 7,525.8 | 47.2 | 20.6 | 106.4 | 296.3 | 15.8 | 29.1 | 76.9 | 20.8 | 34.9 | 97.2 | 8,550.2 |
| Q1 | 83.0 | 653.5 | 23,288.6 | 102.2 | 62.3 | 319.4 | 571.9 | 28.0 | 77.8 | 205.2 | 54.4 | 96.6 | 296.6 | 25,839.6 |
| Apr | 40.6 | 367.3 | 5,586.4 | 31.0 | 21.9 | 88.0 | 211.9 | 12.3 | 28.5 | 42.1 | 23.2 | 69.0 | 84.4 | 6,606.8 |
| May | 66.9 | 314.6 | 7,882.7 | 0.0 | 22.8 | 133.9 | 241.4 | 19.4 | 30.9 | 75.2 | 34.0 | 34.5 | 189.1 | 9,045.3 |
| Jun | 46.3 | 257.9 | 9,261.0 | 43.8 | 26.9 | 137.7 | 237.6 | 22.2 | 37.3 | 93.2 | 25.5 | 58.0 | 157.4 | 10,404.9 |
| Q2 | 153.9 | 939.8 | 22,730.1 | 74.8 | 71.6 | 359.6 | 690.9 | 54.0 | 96.8 | 210.5 | 82.7 | 161.5 | 430.8 | 26,057.1 |
| Jul | 60.2 | 414.9 | 8,819.4 | 35.5 | 23.8 | 97.4 | 243.8 | 14.2 | 34.0 | 72.6 | 23.9 | 35.5 | 186.6 | 10,062.0 |
| Aug | 64.6 | 449.9 | 9,646.0 | 30.1 | 20.1 | 85.1 | 217.6 | 8.8 | 31.4 | 125.5 | 33.1 | 55.9 | 146.6 | 10,914.7 |
| Sep | 71.3 | 304.5 | 7,760.6 | 14.1 | 19.8 | 14.1 | 279.3 | 3.5 | 36.3 | 109.1 | 25.4 | 116.2 | 133.3 | 8,887.6 |
| Q3 | 196.1 | 1,169.3 | 26,226.0 | 79.7 | 63.8 | 196.6 | 740.7 | 26.5 | 101.7 | 307.3 | 82.4 | 207.6 | 466.5 | 29,864.3 |
| Oct | 85.7 | 468.9 | 2,997.5 | 16.8 | 20.8 | 141.4 | 210.8 | 4.4 | 33.8 | 89.7 | 29.8 | 30.0 | 139.0 | 4,268.7 |
| Nov | 65.1 | 319.3 | 7,392.2 | 16.3 | 19.9 | 85.3 | 295.7 | 16.2 | 28.7 | 91.3 | 35.0 | 45.8 | 185.2 | 8,596.0 |
| Dec | 62.1 | 466.1 | 6,669.5 | 18.3 | 10.8 | 82.7 | 130.8 | 7.7 | 22.2 | 101.9 | 35.5 | 110.0 | 182.7 | 7,900.2 |
| Q4 | 212.9 | 1,254.2 | 17,059.3 | 51.4 | 51.4 | 309.4 | 637.4 | 28.2 | 84.7 | 282.9 | 100.3 | 185.8 | 506.9 | 20,764.9 |
| Total_2022 | 646.0 | 4,016.9 | 89,304.0 | 308.2 | 249.2 | 1,185.0 | 2,640.9 | 136.6 | 361.0 | 1,006.0 | 319.8 | 651.5 | 1,700.8 | 102,525.8 |
| Jan_2023 | 68.6 | 523.8 | 6,028.1 | 16.5 | 12.0 | 116.1 | 204.6 | 3.2 | 34.8 | 106.6 | 22.8 | 24.4 | 96.2 | 7,257.6 |
| Feb | 52.5 | 454.0 | 4,857.5 | 23.1 | 25.2 | 116.7 | 294.5 | 7.3 | 28.5 | 65.7 | 19.5 | 63.8 | 92.0 | 6,100.5 |
| Mar | 46.7 | 465.9 | 7,281.7 | 33.5 | 18.6 | 76.6 | 248.6 | 12.8 | 35.4 | 86.4 | 22.1 | 37.8 | 89.2 | 8,455.2 |
| Q1 | 167.8 | 1,443.8 | 18,167.3 | 73.1 | 55.9 | 309.3 | 747.7 | 23.4 | 98.6 | 258.6 | 64.4 | 125.9 | 277.4 | 21,813.3 |
| Apr | 39.5 | 388.2 | 5,620.3 | 40.0 | 16.7 | 64.6 | 179.7 | 19.9 | 25.2 | 87.9 | 27.4 | 39.9 | 87.1 | 6,636.3 |
| May | 54.4 | 544.6 | 7,531.2 | 27.8 | 26.0 | 69.7 | 269.1 | 23.9 | 32.9 | 57.5 | 45.3 | 63.7 | 176.6 | 8,922.6 |
| Jun | 42.0 | 424.4 | 6,368.0 | 21.1 | 28.7 | 69.4 | 265.1 | 36.5 | 33.4 | 68.2 | 31.8 | 58.9 | 149.3 | 7,596.7 |
| Q2 | 135.9 | 1,357.2 | 19,519.5 | 88.8 | 71.4 | 203.7 | 713.9 | 80.3 | 91.6 | 213.6 | 104.5 | 162.5 | 412.9 | 23,155.7 |
| Jul | 34.1 | 636.0 | 6,767.4 | 17.4 | 23.5 | 26.0 | 285.7 | 38.1 | 27.1 | 117.4 | 30.9 | 32.9 | 123.2 | 8,159.8 |
| Aug | 30.0 | 654.3 | 6,361.5 | 23.0 | 27.4 | 29.6 | 344.1 | 58.8 | 31.5 | 102.6 | 30.1 | 35.2 | 121.7 | 7,849.8 |
| Sep | 28.2 | 733.8 | 3,599.9 | 19.0 | 25.4 | 28.6 | 267.8 | 38.9 | 45.8 | 106.6 | 31.4 | 25.8 | 142.8 | 5,093.8 |
| Q3 | 92.2 | 2,024.1 | 16,728.8 | 59.4 | 76.3 | 84.2 | 897.7 | 135.7 | 104.4 | 326.6 | 92.3 | 93.9 | 387.7 | 21,103.4 |
| Oct | 23.4 | 705.2 | 2,387.0 | 21.4 | 43.8 | 16.3 | 280.4 | 40.4 | 37.2 | 100.2 | 37.1 | 91.5 | 129.5 | 3,913.4 |
| Nov | 26.9 | 784.7 | 1,528.2 | 30.0 | 30.8 | 14.9 | 312.0 | 28.0 | 114.1 | 94.1 | 40.2 | 30.1 | 209.1 | 3,243.1 |
| Dec | 20.5 | 651.3 | 3,633.2 | 13.7 | 25.2 | 19.1 | 111.7 | 17.8 | 22.2 | 214.3 | 37.5 | 23.1 | 155.4 | 4,944.8 |
| Q4 | 70.7 | 2,141.1 | 7,548.4 | 65.0 | 99.8 | 50.3 | 704.0 | 86.3 | 173.5 | 408.5 | 114.8 | 144.6 | 494.1 | 12,101.3 |
| Total_2023 | 466.6 | 6,966.2 | 61,964.0 | 286.3 | 303.4 | 647.6 | 3,063.2 | 325.7 | 468.1 | 1,207.4 | 376.0 | 527.0 | 1,572.1 | 78,173.7 |
| Jan_2024 | 25.7 | 885.9 | 3,348.4 | 20.5 | 14.7 | 32.2 | 214.2 | 21.4 | 26.0 | 141.9 | 27.2 | 70.8 | 84.9 | 4,913.8 |
| Feb | 23.1 | 674.4 | 2,001.9 | 6.1 | 23.3 | 42.5 | 308.8 | 113.8 | 33.5 | 87.9 | 28.3 | 28.4 | 98.8 | 3,470.8 |
| Mar | 23.3 | 766.7 | 3,030.7 | 3.4 | 30.3 | 50.0 | 230.3 | 38.3 | 36.3 | 128.5 | 26.3 | 21.7 | 132.5 | 4,518.5 |
| Q1 | 72.1 | 2,327.0 | 8,381.0 | 30.0 | 68.3 | 124.7 | 753.3 | 173.6 | 95.8 | 358.3 | 81.8 | 120.9 | 316.1 | 12,903.1 |
| Change | 0.3 | 92.4 | 1,028.8 | (2.7) | 7.1 | 7.6 | (78.6) | (75.5) | 2.8 | 40.6 | (2.0) | (6.7) | 33.7 | 1,047.7 |
| %Contribution | | | | | | | | | | | | | | |
| 2023 | 0.6 | 8.9 | 79.3 | 0.4 | 0.4 | 0.8 | 3.9 | 0.4 | 0.6 | 1.5 | 0.5 | 0.7 | 2.0 | 100.0 |
| Feb | 0.7 | 19.4 | 57.7 | 0.2 | 0.7 | 1.2 | 8.9 | 3.3 | 1.0 | 2.5 | 0.8 | 0.8 | 2.8 | 100.0 |
| Mar | 0.5 | 17.0 | 67.1 | 0.1 | 0.7 | 1.1 | 5.1 | 0.8 | 0.8 | 2.8 | 0.6 | 0.5 | 2.9 | 100.0 |
| % Change | 1.1 | 13.7 | 51.4 | (43.7) | 30.3 | 17.9 | (25.4) | (66.3) | 8.3 | 46.1 | (7.1) | (23.5) | 34.1 | 30.2 |

Change: Difference between the Current and Previous month

Table 2.3: Diamonds Trade – January 2022 to March 2024 (Million Pula)

| Period \ HS | Imports | | | | | | Total Exports | | | | | |
|-------------------|----------------|--------------|------------|-----------------|----------------|-----------------|---------------|--------------|------------|-----------------|-----------------|-----------------|
| | 71021000 | 71022100 | 71022900 | 71023100 | 71023900 | Total | 71021000 | 71022100 | 71022900 | 71023100 | 71023900 | Total |
| Jan_2022 | 0.0 | 11.8 | 0.0 | 1,922.0 | 291.4 | 2,225.2 | 0.0 | 8.2 | 0.0 | 6,726.8 | 967.7 | 7,702.8 |
| Feb | 0.0 | 18.6 | 0.0 | 2,756.0 | 521.1 | 3,295.7 | 0.0 | 53.2 | 0.0 | 6,729.9 | 1,276.9 | 8,060.0 |
| Mar | 512.4 | 14.4 | 0.0 | 2,526.8 | 658.7 | 3,712.3 | 0.0 | 28.3 | 0.0 | 5,919.0 | 1,578.5 | 7,525.8 |
| Q1 | 512.4 | 44.8 | 0.0 | 7,204.8 | 1,471.3 | 9,233.3 | 0.0 | 89.8 | 0.0 | 19,375.8 | 3,823.1 | 23,288.6 |
| Apr | 0.0 | 0.1 | 0.0 | 851.9 | 822.8 | 1,674.8 | 0.0 | 29.1 | 0.0 | 4,311.7 | 1,245.5 | 5,586.4 |
| May | 0.0 | 295.3 | 0.0 | 1,619.3 | 828.0 | 2,742.7 | 0.0 | 20.7 | 0.0 | 6,034.3 | 1,827.7 | 7,882.7 |
| Jun | 374.7 | 1.6 | 0.0 | 183.0 | 568.9 | 1,128.2 | 0.0 | 41.0 | 0.0 | 7,577.3 | 1,642.7 | 9,261.0 |
| Q2 | 374.8 | 296.9 | 0.0 | 2,654.3 | 2,219.7 | 5,545.6 | 0.0 | 90.8 | 0.0 | 17,923.4 | 4,715.9 | 22,730.1 |
| Jul | 371.6 | 0.0 | 0.0 | 239.7 | 936.9 | 1,548.2 | 0.0 | 44.3 | 0.0 | 7,382.3 | 1,392.8 | 8,819.4 |
| Aug | 323.3 | 0.4 | 0.0 | 168.5 | 411.8 | 903.9 | 0.0 | 62.0 | 0.0 | 7,573.2 | 2,010.9 | 9,646.0 |
| Sep | 415.3 | 0.8 | 0.0 | 5,088.8 | 264.3 | 5,769.1 | 0.0 | 37.8 | 0.0 | 5,827.4 | 1,895.4 | 7,760.6 |
| Q3 | 1,110.2 | 1.2 | 0.0 | 5,496.9 | 1,613.0 | 8,221.2 | 0.0 | 144.1 | 0.0 | 20,782.8 | 5,299.0 | 26,226.0 |
| Oct | 349.2 | 0.1 | 0.0 | 591.5 | 368.4 | 1,309.1 | 0.0 | 0.0 | 0.0 | 1,644.0 | 1,353.5 | 2,997.5 |
| Nov | 21.2 | 7.0 | 0.0 | 321.7 | 291.6 | 641.5 | 2.4 | 55.4 | 0.0 | 5,656.9 | 1,677.5 | 7,392.2 |
| Dec | 534.2 | 4.8 | 0.0 | 1,092.2 | 720.5 | 2,351.7 | 5.9 | 36.7 | 0.0 | 5,405.1 | 1,221.9 | 6,669.5 |
| Q4 | 904.6 | 11.9 | 0.0 | 2,005.3 | 1,380.5 | 4,302.3 | 8.3 | 92.1 | 0.0 | 12,705.9 | 4,253.0 | 17,059.3 |
| Total_2022 | 2,902.0 | 354.8 | 0.0 | 17,361.3 | 6,684.4 | 27,302.5 | 8.3 | 416.8 | 0.0 | 70,788.0 | 18,091.0 | 89,304.0 |
| Jan_2023 | 320.2 | 0.5 | 0.0 | 135.3 | 532.9 | 988.8 | 0.0 | 34.7 | 0.0 | 5,101.8 | 891.5 | 6,028.1 |
| Feb | 925.2 | 0.1 | 0.0 | 117.3 | 309.8 | 1,352.4 | 0.0 | 32.2 | 0.0 | 3,520.2 | 1,305.1 | 4,857.5 |
| Mar | 426.4 | 0.2 | 0.0 | 76.0 | 316.2 | 818.8 | 0.0 | 33.3 | 0.0 | 5,537.0 | 1,711.3 | 7,281.7 |
| Q1 | 1,671.7 | 0.8 | 0.0 | 328.6 | 1,158.9 | 3,160.0 | 0.0 | 100.2 | 0.0 | 14,159.1 | 3,907.9 | 18,167.3 |
| Apr | 0.0 | 0.0 | 0.0 | 561.2 | 204.7 | 765.9 | 0.0 | 47.5 | 0.0 | 4,323.2 | 1,249.6 | 5,620.3 |
| May | 237.7 | 0.8 | 0.0 | 201.0 | 434.8 | 874.4 | 0.0 | 27.8 | 0.0 | 5,954.7 | 1,548.8 | 7,531.2 |
| Jun | 26.8 | 0.2 | 0.0 | 431.8 | 320.9 | 779.6 | 342.2 | 45.2 | 0.0 | 4,659.1 | 1,321.5 | 6,368.0 |
| Q2 | 264.5 | 1.0 | 0.0 | 1,194.0 | 960.4 | 2,419.9 | 342.2 | 120.5 | 0.0 | 14,936.9 | 4,119.9 | 19,519.5 |
| Jul | 383.7 | 0.0 | 0.0 | 62.7 | 365.1 | 811.5 | 31.0 | 33.2 | 0.0 | 4,930.5 | 1,772.6 | 6,767.4 |
| Aug | 272.7 | 0.1 | 0.0 | 77.0 | 247.3 | 597.0 | 0.0 | 101.3 | 0.0 | 4,552.5 | 1,707.7 | 6,361.5 |
| Sep | 0.0 | 0.3 | 0.0 | 1,077.3 | 357.9 | 1,435.5 | 0.0 | 0.9 | 0.0 | 2,432.0 | 1,166.9 | 3,599.9 |
| Q3 | 656.4 | 0.4 | 0.0 | 1,216.9 | 970.4 | 2,844.0 | 31.0 | 135.5 | 0.0 | 11,915.0 | 4,647.3 | 16,728.8 |
| Oct | 581.2 | 0.0 | 0.0 | 459.6 | 395.8 | 1,436.6 | 0.0 | 1.7 | 0.0 | 591.8 | 1,793.5 | 2,387.0 |
| Nov | 0.3 | 0.0 | 0.1 | 1,687.4 | 588.2 | 2,276.0 | 0.0 | 57.2 | 0.0 | 329.2 | 1,141.8 | 1,528.2 |
| Dec | 260.5 | 1.0 | 0.0 | 545.3 | 290.2 | 1,097.0 | 0.0 | 1.0 | 0.0 | 2,819.3 | 812.9 | 3,633.2 |
| Q4 | 842.0 | 1.0 | 0.1 | 2,692.3 | 1,274.2 | 4,809.5 | 0.0 | 59.9 | 0.0 | 3,740.3 | 3,748.3 | 7,548.4 |
| Total_2023 | 3,434.7 | 3.1 | 0.1 | 5,431.7 | 4,363.9 | 13,233.5 | 373.2 | 416.1 | 0.0 | 44,751.4 | 16,423.3 | 61,964.0 |
| Jan_2024 | 373.2 | 0.0 | 0.0 | 1,268.5 | 184.3 | 1,826.0 | 0.0 | 3.3 | 0.0 | 2,978.4 | 366.8 | 3,348.4 |
| Feb | 283.8 | 0.2 | 0.0 | 357.6 | 115.3 | 756.8 | 0.0 | 1.0 | 0.0 | 1,795.1 | 205.8 | 2,001.9 |
| Mar | 370.1 | 0.0 | 0.0 | 807.7 | 45.7 | 1,223.6 | 0.0 | 7.5 | 0.0 | 2,565.7 | 457.5 | 3,030.7 |
| Q1 | 1,027.1 | 0.2 | 0.0 | 2,433.8 | 345.3 | 3,806.4 | 0.0 | 11.8 | 0.0 | 7,339.2 | 1,030.1 | 8,381.0 |

Note: 71022100: Industrial Diamonds unworked or simply sawn, cleaved or bruited; 71022900: Industrial Diamonds, not mounted or set, NES; 71023100: Non-industrial diamonds unworked or simply sawn, cleaved or bruited; 71023900: Non-industrial diamonds, not mounted or set NES; 71021000: Unsorted diamonds; HS: Harmonised System Code; NES: Not Elsewhere Specified.

Table 3.1A: Total Imports by Country, Region and Principal Import Commodity Groups - March 2024 (Million Pula)

| Partner \ HS | Chemicals & Rubber Products | Diamonds | Food, Beverages & Tobacco | Fuel | Furniture | Machinery & Electrical Equipment | Metals & Metal Products | Salt Ores & Related Products | Textiles & Footwear | Vehicles & Transport Equipment | Wood & Paper Products | Other Goods | Total Goods | % Contribution |
|--------------------------|-----------------------------|----------------|---------------------------|----------------|-------------|----------------------------------|-------------------------|------------------------------|---------------------|--------------------------------|-----------------------|--------------|----------------|----------------|
| South Africa | 590.6 | 0.0 | 999.8 | 986.6 | 74.1 | 542.2 | 300.6 | 63.4 | 170.2 | 360.7 | 146.4 | 158.4 | 4,393.0 | 62.8 |
| Namibia | 0.3 | 771.3 | 8.7 | 250.6 | 0.7 | 0.4 | 1.1 | 14.3 | 0.0 | 1.9 | 0.2 | 0.1 | 1,049.7 | 15.0 |
| Eswatini | 4.7 | 0.0 | 13.9 | 0.0 | 0.0 | 0.0 | 0.0 | 0.2 | 0.1 | 0.0 | 3.1 | 0.0 | 22.0 | 0.3 |
| Lesotho | 0.0 | 0.0 | 0.0 | 0.0 | 0.0 | 0.5 | 0.0 | 0.0 | 1.1 | 0.3 | 0.0 | 0.0 | 1.9 | 0.0 |
| SACU | 595.6 | 771.3 | 1,022.4 | 1,237.2 | 74.8 | 543.1 | 301.7 | 77.8 | 171.4 | 363.0 | 149.7 | 158.5 | 5,466.5 | 78.2 |
| Mozambique | 0.0 | 0.0 | 5.1 | 97.1 | 0.0 | 0.0 | 0.0 | 0.0 | 2.6 | 0.0 | 0.0 | 0.1 | 105.0 | 1.5 |
| Other SADC | 1.2 | 0.0 | 36.2 | 0.1 | 0.6 | 6.1 | 27.2 | 0.1 | 0.7 | 31.6 | 4.1 | 7.4 | 115.3 | 1.6 |
| SADC | 596.8 | 771.3 | 1,063.7 | 1,334.5 | 75.4 | 549.2 | 328.9 | 77.9 | 174.7 | 394.6 | 153.8 | 165.9 | 5,686.9 | 81.3 |
| Other Africa | 1.3 | 0.0 | 0.1 | 0.0 | 0.0 | 2.3 | 0.0 | 0.0 | 0.1 | 3.2 | 0.0 | 0.6 | 7.5 | 0.1 |
| Africa | 598.0 | 771.3 | 1,063.8 | 1,334.5 | 75.4 | 551.5 | 328.9 | 77.9 | 174.9 | 397.8 | 153.8 | 166.6 | 5,694.4 | 81.5 |
| China | 16.8 | 0.0 | 0.6 | 0.0 | 9.2 | 231.6 | 17.1 | 0.1 | 17.5 | 4.8 | 3.7 | 15.7 | 317.2 | 4.5 |
| Other Asia | 24.7 | 53.7 | 16.2 | 1.8 | 0.8 | 35.9 | 3.1 | 0.0 | 2.4 | 45.5 | 0.6 | 4.5 | 189.3 | 2.7 |
| Asia | 41.5 | 53.7 | 16.8 | 1.8 | 10.1 | 267.5 | 20.2 | 0.1 | 19.9 | 50.3 | 4.3 | 20.3 | 506.5 | 7.2 |
| Germany | 40.5 | 0.0 | 0.1 | 0.1 | 1.7 | 21.8 | 0.6 | 0.0 | 9.5 | 4.2 | 30.9 | 3.5 | 112.8 | 1.6 |
| Other EU | 34.2 | 23.5 | 21.7 | 0.7 | 0.4 | 60.3 | 7.1 | 0.0 | 0.4 | 12.9 | 0.5 | 4.8 | 166.4 | 2.4 |
| EU | 74.7 | 23.5 | 21.8 | 0.8 | 2.1 | 82.0 | 7.6 | 0.0 | 9.9 | 17.1 | 31.4 | 8.3 | 279.2 | 4.0 |
| Canada | 1.0 | 370.1 | 0.0 | 0.0 | 0.0 | 11.3 | 0.1 | 0.0 | 0.0 | 0.0 | 0.0 | 0.4 | 382.9 | 5.5 |
| USA | 15.2 | 0.5 | 0.2 | 0.1 | 3.4 | 32.4 | 1.1 | 0.0 | 0.3 | 12.4 | 0.4 | 7.6 | 73.6 | 1.1 |
| Rest of the World | 6.5 | 4.5 | 6.3 | 0.0 | 0.0 | 29.2 | 0.9 | 0.0 | 0.6 | 1.6 | 0.4 | 4.4 | 54.4 | 0.8 |
| World | 736.9 | 1,223.6 | 1,109.0 | 1,337.1 | 91.0 | 973.9 | 358.9 | 78.0 | 205.6 | 479.3 | 190.3 | 207.5 | 6,991.0 | 100.0 |

Table 3.1B: Total Imports by Country, Region and Principal Import Commodity Groups - March 2024 (Million Pula)

| Partner \ HS | Chemicals & Rubber Products | Diamonds | Food, Beverages & Tobacco | Fuel | Furniture | Machinery & Electrical Equipment | Metals & Metal Products | Salt Ores & Related Products | Textiles & Footwear | Vehicles & Transport Equipment | Wood & Paper Products | Other Goods | Total Goods |
|--------------------------|-----------------------------|-------------|---------------------------|-------------|------------|----------------------------------|-------------------------|------------------------------|---------------------|--------------------------------|-----------------------|-------------|--------------|
| South Africa | 13.4 | 0.0 | 22.8 | 22.5 | 1.7 | 12.3 | 6.8 | 1.4 | 3.9 | 8.2 | 3.3 | 3.6 | 100.0 |
| Namibia | 0.0 | 73.5 | 0.8 | 23.9 | 0.1 | 0.0 | 0.1 | 1.4 | 0.0 | 0.2 | 0.0 | 0.0 | 100.0 |
| Eswatini | 21.3 | 0.0 | 63.4 | 0.0 | 0.0 | 0.0 | 0.0 | 0.7 | 0.4 | 0.0 | 14.1 | 0.1 | 100.0 |
| Lesotho | 0.0 | 0.0 | 0.1 | 0.0 | 0.0 | 23.7 | 0.1 | 0.0 | 59.5 | 15.8 | 0.0 | 0.9 | 100.0 |
| SACU | 10.9 | 14.1 | 18.7 | 22.6 | 1.4 | 9.9 | 5.5 | 1.4 | 3.1 | 6.6 | 2.7 | 2.9 | 100.0 |
| Mozambique | 0.0 | 0.0 | 4.9 | 92.5 | 0.0 | 0.0 | 0.0 | 0.0 | 2.5 | 0.0 | 0.0 | 0.1 | 100.0 |
| Other SADC | 1.0 | 0.0 | 31.4 | 0.1 | 0.5 | 5.3 | 23.6 | 0.1 | 0.6 | 27.4 | 3.6 | 6.4 | 100.0 |
| SADC | 10.5 | 13.6 | 18.7 | 23.5 | 1.3 | 9.7 | 5.8 | 1.4 | 3.1 | 6.9 | 2.7 | 2.9 | 100.0 |
| Other Africa | 16.8 | 0.0 | 1.6 | 0.0 | 0.0 | 29.9 | 0.0 | 0.0 | 1.5 | 42.0 | 0.1 | 8.2 | 100.0 |
| AFRICA | 10.5 | 13.5 | 18.7 | 23.4 | 1.3 | 9.7 | 5.8 | 1.4 | 3.1 | 7.0 | 2.7 | 2.9 | 100.0 |
| China | 5.3 | 0.0 | 0.2 | 0.0 | 2.9 | 73.0 | 5.4 | 0.0 | 5.5 | 1.5 | 1.2 | 5.0 | 100.0 |
| Other Asia | 13.0 | 28.4 | 8.6 | 0.9 | 0.4 | 19.0 | 1.6 | 0.0 | 1.3 | 24.0 | 0.3 | 2.4 | 100.0 |
| Asia | 8.2 | 10.6 | 3.3 | 0.4 | 2.0 | 52.8 | 4.0 | 0.0 | 3.9 | 9.9 | 0.8 | 4.0 | 100.0 |
| Germany | 35.9 | 0.0 | 0.1 | 0.1 | 1.5 | 19.3 | 0.5 | 0.0 | 8.4 | 3.7 | 27.4 | 3.1 | 100.0 |
| Other EU | 20.6 | 14.1 | 13.0 | 0.4 | 0.2 | 36.2 | 4.2 | 0.0 | 0.2 | 7.8 | 0.3 | 2.9 | 100.0 |
| EU | 26.8 | 8.4 | 7.8 | 0.3 | 0.7 | 29.4 | 2.7 | 0.0 | 3.5 | 6.1 | 11.2 | 3.0 | 100.0 |
| Canada | 0.3 | 96.7 | 0.0 | 0.0 | 0.0 | 2.9 | 0.0 | 0.0 | 0.0 | 0.0 | 0.0 | 0.1 | 100.0 |
| USA | 20.7 | 0.6 | 0.3 | 0.1 | 4.6 | 44.0 | 1.5 | 0.0 | 0.4 | 16.9 | 0.5 | 10.3 | 100.0 |
| Rest of the World | 11.9 | 8.2 | 11.5 | 0.0 | 0.1 | 53.7 | 1.7 | 0.0 | 1.2 | 3.0 | 0.7 | 8.1 | 100.0 |
| World | 10.5 | 17.5 | 15.9 | 19.1 | 1.3 | 13.9 | 5.1 | 1.1 | 2.9 | 6.9 | 2.7 | 3.0 | 100.0 |

Table 3.2A: Total Exports by Country, Region and Principal Export Commodity Groups – March 2024 (Million Pula)

| Period \ HS | Coal | Copper | Diamonds | Gold | Iron & Steel Products | Live Cattle | Machinery & Electrical Equipment | Meat & Meat Products | Plastic & Plastic Products | Salt & Soda Ash | Textiles | Vehicle & Transport Equipment | Other Goods | Total Goods | % Contribution |
|--------------------------|-------------|--------------|----------------|------------|-----------------------|-------------|----------------------------------|----------------------|----------------------------|-----------------|-------------|-------------------------------|--------------|----------------|----------------|
| South Africa | 21.2 | 3.5 | 42.6 | 3.4 | 25.7 | 47.1 | 200.0 | 35.5 | 27.0 | 111.2 | 13.1 | 11.0 | 30.7 | 572.0 | 12.7 |
| Namibia | 2.1 | 0.0 | 0.0 | 0.0 | 0.7 | 0.0 | 8.9 | 1.7 | 3.8 | 0.0 | 0.7 | 4.5 | 10.5 | 32.9 | 0.7 |
| Lesotho | 0.0 | 0.0 | 0.0 | 0.0 | 0.0 | 0.0 | 0.0 | 0.0 | 0.0 | 0.0 | 0.0 | 0.5 | 0.0 | 0.5 | 0.0 |
| Eswatini | 0.0 | 0.0 | 0.0 | 0.0 | 0.0 | 0.0 | 0.0 | 0.0 | 0.0 | 0.0 | 0.0 | 0.0 | 0.0 | 0.0 | 0.0 |
| SACU | 23.3 | 3.5 | 42.6 | 3.4 | 26.4 | 47.1 | 208.9 | 37.2 | 30.9 | 111.2 | 13.7 | 16.0 | 41.1 | 605.4 | 13.4 |
| Zimbabwe | 0.0 | 0.0 | 0.0 | 0.0 | 0.6 | 0.3 | 13.9 | 0.0 | 2.8 | 6.1 | 12.3 | 4.7 | 64.9 | 105.6 | 2.3 |
| Other SADC | 0.0 | 0.0 | 0.0 | 0.0 | 0.3 | 2.6 | 6.9 | 1.1 | 2.7 | 11.1 | 0.2 | 1.1 | 18.3 | 44.4 | 1.0 |
| SADC | 23.3 | 3.5 | 42.6 | 3.4 | 27.3 | 50.0 | 229.7 | 38.3 | 36.3 | 128.5 | 26.3 | 21.7 | 124.4 | 755.4 | 16.7 |
| Other Africa | 0.0 | 0.0 | 0.0 | 0.0 | 0.0 | 0.0 | 0.0 | 0.0 | 0.0 | 0.0 | 0.0 | 0.0 | 0.0 | 0.1 | 0.0 |
| Africa | 23.3 | 3.5 | 42.6 | 3.4 | 27.3 | 50.0 | 229.7 | 38.3 | 36.3 | 128.5 | 26.3 | 21.7 | 124.4 | 755.4 | 16.7 |
| UAE | 0.0 | 0.0 | 1,291.1 | 0.0 | 0.0 | 0.0 | 0.0 | 0.0 | 0.0 | 0.0 | 0.0 | 0.0 | 0.4 | 1,291.5 | 28.6 |
| India | 0.0 | 0.0 | 815.2 | 0.0 | 3.0 | 0.0 | 0.0 | 0.0 | 0.0 | 0.0 | 0.0 | 0.0 | 1.5 | 819.7 | 18.1 |
| China | 0.0 | 386.6 | 0.0 | 0.0 | 0.0 | 0.0 | 0.0 | 0.0 | 0.0 | 0.0 | 0.0 | 0.0 | 0.0 | 386.6 | 8.6 |
| Israel | 0.0 | 0.0 | 84.2 | 0.0 | 0.0 | 0.0 | 0.0 | 0.0 | 0.0 | 0.0 | 0.0 | 0.0 | 0.0 | 84.2 | 1.9 |
| Singapore | 0.0 | 0.0 | 82.7 | 0.0 | 0.0 | 0.0 | 0.0 | 0.0 | 0.0 | 0.0 | 0.0 | 0.0 | 0.0 | 82.7 | 1.8 |
| Hong Kong | 0.0 | 0.0 | 62.0 | 0.0 | 0.0 | 0.0 | 0.0 | 0.0 | 0.0 | 0.0 | 0.0 | 0.0 | 0.0 | 62.0 | 1.4 |
| Viet Nam | 0.0 | 0.0 | 47.2 | 0.0 | 0.0 | 0.0 | 0.0 | 0.0 | 0.0 | 0.0 | 0.0 | 0.0 | 0.0 | 47.2 | 1.0 |
| Sri Lanka | 0.0 | 0.0 | 46.5 | 0.0 | 0.0 | 0.0 | 0.0 | 0.0 | 0.0 | 0.0 | 0.0 | 0.0 | 0.0 | 46.5 | 1.0 |
| Other Asia | 0.0 | 0.0 | 21.3 | 0.0 | 0.0 | 0.0 | 0.0 | 0.0 | 0.0 | 0.0 | 0.0 | 0.0 | 3.7 | 25.0 | 0.6 |
| Asia | 0.0 | 386.6 | 2,450.2 | 0.0 | 3.0 | 0.0 | 0.0 | 0.0 | 0.0 | 0.0 | 0.0 | 0.0 | 5.6 | 2,845.5 | 63.0 |
| Belgium | 0.0 | 0.0 | 511.6 | 0.0 | 0.0 | 0.0 | 0.0 | 0.0 | 0.0 | 0.0 | 0.0 | 0.0 | 0.2 | 511.8 | 11.3 |
| Other EU | 0.0 | 0.0 | 0.0 | 0.0 | 0.0 | 0.0 | 0.4 | 0.0 | 0.0 | 0.0 | 0.0 | 0.0 | 1.6 | 2.0 | 0.0 |
| EU | 0.0 | 0.0 | 511.6 | 0.0 | 0.0 | 0.0 | 0.4 | 0.0 | 0.0 | 0.0 | 0.0 | 0.0 | 1.8 | 513.8 | 11.4 |
| Australia | 0.0 | 335.0 | 0.0 | 0.0 | 0.0 | 0.0 | 0.0 | 0.0 | 0.0 | 0.0 | 0.0 | 0.0 | 0.0 | 335.0 | 7.4 |
| Rest of the World | 0.0 | 41.6 | 26.3 | 0.0 | 0.0 | 0.0 | 0.1 | 0.0 | 0.0 | 0.0 | 0.0 | 0.0 | 0.7 | 68.8 | 1.5 |
| World | 23.3 | 766.7 | 3,030.7 | 3.4 | 30.3 | 50.0 | 230.3 | 38.3 | 36.3 | 128.5 | 26.3 | 21.7 | 132.5 | 4,518.5 | 100.0 |

Table 3.2B: Total Exports by Country, Region and Principal Export Commodity Groups – March 2024 (Million Pula)

| Period \ HS | Coal | Copper | Diamonds | Gold | Iron & Steel Products | Live Cattle | Machinery & Electrical Equipment | Meat & Meat Products | Plastic & Plastic Products | Salt & Soda Ash | Textiles | Vehicle & Transport Equipment | Other Goods | Total Goods |
|--------------------------|------------|-------------|-------------|------------|-----------------------|-------------|----------------------------------|----------------------|----------------------------|-----------------|------------|-------------------------------|-------------|--------------|
| South Africa | 3.7 | 0.6 | 7.4 | 0.6 | 4.5 | 8.2 | 35.0 | 6.2 | 4.7 | 19.4 | 2.3 | 1.9 | 5.4 | 100.0 |
| Namibia | 6.4 | 0.0 | 0.0 | 0.0 | 2.2 | 0.0 | 27.2 | 5.1 | 11.6 | 0.0 | 2.0 | 13.6 | 31.8 | 100.0 |
| Lesotho | 0.0 | 0.0 | 0.0 | 0.0 | 0.0 | 0.0 | 0.0 | 0.0 | 0.0 | 0.0 | 0.0 | 95.3 | 4.7 | 100.0 |
| Eswatini | 0.0 | 0.0 | 0.0 | 0.0 | 0.0 | 0.0 | 0.0 | 0.0 | 0.0 | 0.0 | 25.0 | 0.0 | 75.0 | 100.0 |
| SACU | 3.9 | 0.6 | 7.0 | 0.6 | 4.4 | 7.8 | 34.5 | 6.1 | 5.1 | 18.4 | 2.3 | 2.6 | 6.8 | 100.0 |
| Zimbabwe | 0.0 | 0.0 | 0.0 | 0.0 | 0.6 | 0.3 | 13.2 | 0.0 | 2.7 | 5.8 | 11.6 | 4.4 | 61.5 | 100.0 |
| Other SADC | 0.0 | 0.0 | 0.0 | 0.0 | 0.7 | 5.9 | 15.5 | 2.6 | 6.0 | 25.1 | 0.6 | 2.4 | 41.3 | 100.0 |
| SADC | 3.1 | 0.5 | 5.6 | 0.5 | 3.6 | 6.6 | 30.4 | 5.1 | 4.8 | 17.0 | 3.5 | 2.9 | 16.5 | 100.0 |
| Other Africa | 0.0 | 0.0 | 0.0 | 0.0 | 0.0 | 0.0 | 14.5 | 0.0 | 0.0 | 0.0 | 1.8 | 0.0 | 83.6 | 100.0 |
| Africa | 3.1 | 0.5 | 5.6 | 0.5 | 3.6 | 6.6 | 30.4 | 5.1 | 4.8 | 17.0 | 3.5 | 2.9 | 16.5 | 100.0 |
| UAE | 0.0 | 0.0 | 100.0 | 0.0 | 0.0 | 0.0 | 0.0 | 0.0 | 0.0 | 0.0 | 0.0 | 0.0 | 0.0 | 100.0 |
| India | 0.0 | 0.0 | 99.4 | 0.0 | 0.4 | 0.0 | 0.0 | 0.0 | 0.0 | 0.0 | 0.0 | 0.0 | 0.2 | 100.0 |
| China | 0.0 | 100.0 | 0.0 | 0.0 | 0.0 | 0.0 | 0.0 | 0.0 | 0.0 | 0.0 | 0.0 | 0.0 | 0.0 | 100.0 |
| Israel | 0.0 | 0.0 | 100.0 | 0.0 | 0.0 | 0.0 | 0.0 | 0.0 | 0.0 | 0.0 | 0.0 | 0.0 | 0.0 | 100.0 |
| Singapore | 0.0 | 0.0 | 100.0 | 0.0 | 0.0 | 0.0 | 0.0 | 0.0 | 0.0 | 0.0 | 0.0 | 0.0 | 0.0 | 100.0 |
| Hong Kong | 0.0 | 0.0 | 100.0 | 0.0 | 0.0 | 0.0 | 0.0 | 0.0 | 0.0 | 0.0 | 0.0 | 0.0 | 0.0 | 100.0 |
| Viet Nam | 0.0 | 0.0 | 100.0 | 0.0 | 0.0 | 0.0 | 0.0 | 0.0 | 0.0 | 0.0 | 0.0 | 0.0 | 0.0 | 100.0 |
| Sri Lanka | 0.0 | 0.0 | 100.0 | 0.0 | 0.0 | 0.0 | 0.0 | 0.0 | 0.0 | 0.0 | 0.0 | 0.0 | 0.0 | 100.0 |
| Other Asia | 0.0 | 0.0 | 85.3 | 0.0 | 0.0 | 0.0 | 0.0 | 0.0 | 0.0 | 0.0 | 0.0 | 0.0 | 14.7 | 100.0 |
| Asia | 0.0 | 13.6 | 86.1 | 0.0 | 0.1 | 0.0 | 0.0 | 0.0 | 0.0 | 0.0 | 0.0 | 0.0 | 0.2 | 100.0 |
| Belgium | 0.0 | 0.0 | 100.0 | 0.0 | 0.0 | 0.0 | 0.0 | 0.0 | 0.0 | 0.0 | 0.0 | 0.0 | 0.0 | 100.0 |
| Other EU | 0.0 | 0.1 | 0.0 | 0.0 | 0.0 | 0.0 | 19.6 | 0.0 | 0.0 | 0.0 | 0.0 | 0.4 | 79.9 | 100.0 |
| EU | 0.0 | 0.0 | 99.6 | 0.0 | 0.0 | 0.0 | 0.1 | 0.0 | 0.0 | 0.0 | 0.0 | 0.0 | 0.3 | 100.0 |
| Australia | 0.0 | 100.0 | 0.0 | 0.0 | 0.0 | 0.0 | 0.0 | 0.0 | 0.0 | 0.0 | 0.0 | 0.0 | 0.0 | 100.0 |
| Rest of the World | 0.0 | 60.5 | 38.3 | 0.0 | 0.0 | 0.0 | 0.2 | 0.0 | 0.0 | 0.0 | 0.0 | 0.0 | 1.0 | 100.0 |
| World | 0.5 | 17.0 | 67.1 | 0.1 | 0.7 | 1.1 | 5.1 | 0.8 | 0.8 | 2.8 | 0.6 | 0.5 | 2.9 | 100.0 |

Table 4.1 A: Top Imported Goods (Excluding Diamonds) – March 2024 (Million Pula)

| Rank | HS Code | HS Description | BW Pula | Contribution(%) Against Total Non Diamonds Imports | Contribution(%) Against Total Imports |
|------|----------|---|---------|---|---|
| 1 | 27101230 | Distillate fuel, as defined in Additional Note 1 (g) | 695.8 | 12.1 | 10.0 |
| 2 | 27101202 | Petrol, as defined in Additional Note 1 (b) | 536.8 | 9.3 | 7.7 |
| 3 | 10019900 | Other (of Wheat (excluding durum wheat) and Meslin) | 95.7 | 1.7 | 1.4 |
| 4 | 84314990 | Other parts suitable for use solely or principally with the machinery of headings 84.25 to 84.30: | 93.0 | 1.6 | 1.3 |
| 5 | 87032390 | Other motor cars and other motor vehicles principally designed for the transport of persons | 73.8 | 1.3 | 1.1 |
| 6 | 25232900 | Other Portland cement | 72.6 | 1.3 | 1.0 |
| 7 | 85177900 | Aerials and aerial reflectors of all kind; parts suitable for use therewith | 62.5 | 1.1 | 0.9 |
| 8 | 10063000 | Semi-milled or wholly milled rice, whether or not polished or glazed | 59.0 | 1.0 | 0.8 |
| 9 | 34029000 | Other (surface-active preparations, washing preparations (including auxiliary washing preparations) and cleaning preparations, whether or not containing soap, other than those of heading 34.01) | 49.2 | 0.9 | 0.7 |
| 10 | 85444990 | OTHER Insulated (including enamelled or anodised) wire, cable (including co-axial cable) | 45.9 | 0.8 | 0.7 |
| 11 | 87089990 | OTHER Parts and accessories of the motor vehicles of headings 87.01 to 87.05 | 44.2 | 0.8 | 0.6 |
| 12 | 87042181 | Other, double-cab, of a vehicle mass not exceeding 2 000 kg or a G.V.M. not exceeding 3 500 kg, or of a mass not exceeding 1 600 kg or a G.V.M. not exceeding 3 500 kg per chassis fitted with a cab | 44.0 | 0.8 | 0.6 |
| 13 | 10059010 | Dried Maize (Corn) kernels or grains fit for human consumption, not further prepared or processed and not packaged as seeds (excluding pop corn (ZEA MAYS EVERTA)) | 43.0 | 0.7 | 0.6 |
| 14 | 30049099 | Other medicaments consisting of mixed or unmixed products for therapeutic or prophylactic uses | 38.9 | 0.7 | 0.6 |
| 15 | 17011300 | CANE SUGAR SPECIFIED IN SUBHEADING NOTE 2 TO THIS CHAPTER | 36.8 | 0.6 | 0.5 |
| 16 | 15121910 | Sunflower-seed or safflower oil and fractions thereof, Marketed and supplied for use in the process of cooking food | 33.7 | 0.6 | 0.5 |
| 17 | 84749000 | Parts Machinery for sorting, screening, separating, washing, crushing, grinding, mixing or kneading earth, stone, ores or other mineral substances | 33.3 | 0.6 | 0.5 |
| 18 | 34012000 | Soap in other forms | 32.3 | 0.6 | 0.5 |
| 19 | 40118020 | New pneumatic tyres, of rubber, of a kind used on construction, mining or industrial handling vehicles and machines, having a rim size of 91 cm or more | 31.6 | 0.5 | 0.5 |
| 20 | 88023000 | Aeroplanes and other aircraft, of an unladen mass exceeding 2 000 kg but not exceeding 15 000 kg | 31.5 | 0.5 | 0.5 |
| 21 | 84137090 | Other centrifugal pumps | 30.9 | 0.5 | 0.4 |
| 22 | 39041000 | Poly(vinyl chloride), not mixed with any other substances | 30.8 | 0.5 | 0.4 |
| 23 | 85171310 | Telephone sets, including telephones for cellular networks or for other wireless networks; other apparatus for the transmission or reception of voice, images or other data, Designed for use when carried in the hand or on the person | 30.0 | 0.5 | 0.4 |
| 24 | 33049990 | Other Beauty or make-up preparations and preparations for the care of the skin (other than medicaments), including sunscreen or sun tan preparations | 29.8 | 0.5 | 0.4 |
| 25 | 22030090 | Other Beer made from malt, With an alcohol content of 5 per cent or less | 28.1 | 0.5 | 0.4 |

Table 4.1 A: Top Imported Goods (Excluding Diamonds) – February 2024 (Million Pula) Continued

| Rank | HS Code | HS Description | BW Pula | Contribution(%) Against Total Non Diamonds Imports | Contribution(%) Against Total Imports |
|--|----------|--|----------------|---|---|
| 26 | 49119990 | Other printed matter | 27.6 | 0.5 | 0.4 |
| 27 | 30039090 | "Other - Medicaments (excluding goods of heading 30.02, 30.05 or 30.06) consisting of two or more constituents which have been mixed together for therapeutic or prophylactic uses, not put up in measured doses or in forms or packings for retail" | 27.3 | 0.5 | 0.4 |
| 28 | 74081100 | Copper wire Of which the maximum cross-sectional dimension exceeds 6 mm | 26.6 | 0.5 | 0.4 |
| 29 | 22029990 | Other non-alcoholic beverages, not including fruit or vegetable juices of heading 20.09) | 26.0 | 0.5 | 0.4 |
| 30 | 10059090 | Other (Maize (Corn)) | 25.9 | 0.4 | 0.4 |
| 31 | 27101252 | Other prepared lubricating oils | 25.9 | 0.4 | 0.4 |
| 32 | 23040000 | Oil-cake and other solid residues, whether or not ground or in the form of pellets, resulting from the extraction of soya-bean oil | 24.7 | 0.4 | 0.4 |
| 33 | 84713090 | Other portable automatic data processing machines, of a mass not exceeding 10 kg, consisting of at least a central processing unit, a keyboard and a display | 24.5 | 0.4 | 0.4 |
| 34 | 39201090 | Other plates, sheets, film, foil and strip, Of polymers of ethylene | 23.7 | 0.4 | 0.3 |
| 35 | 87043181 | Other, double-cab, of a vehicle mass not exceeding 2 000 kg or a G.V.M. not exceeding 3 500 kg, or of a mass not exceeding 1 600 kg or a G.V.M. not exceeding 3 500 kg per chasis fitted with a cab | 22.8 | 0.4 | 0.3 |
| 36 | 44071100 | Coniferous Wood sawn or chipped lengthwise, sliced or peeled, whether or not planed, sanded or finger-jointed, of a thickness exceeding 6 mm, Of pine (Pinus spp.) | 22.2 | 0.4 | 0.3 |
| 37 | 85176290 | Apparatus designed for use when carried in the hand or on te person (excluding two-way radios) | 21.9 | 0.4 | 0.3 |
| 38 | 22060081 | Other fermented apple or pear beverages, unfortified, with an alcoholic strength of at least 2.5 per cent by volume but not exceeding 15 per cent by volume, With an alcohol content exceeding 5 per cent | 20.4 | 0.4 | 0.3 |
| 39 | 87032490 | Other Motor cars and other motor vehicles principally designed for the transport of persons (excluding those of heading 87.02), including station wagons and racing cars: | 20.2 | 0.3 | 0.3 |
| 40 | 39269099 | Other articles of plastics and articles of other materials of headings .39.01 to 39.14 | 20.0 | 0.3 | 0.3 |
| 41 | 10079000 | Other (Grain Sorghum) | 19.9 | 0.3 | 0.3 |
| 42 | 20099010 | Mixtures of Fruit juices | 19.7 | 0.3 | 0.3 |
| 43 | 27111390 | Other Butanes, Liquefied | 19.7 | 0.3 | 0.3 |
| 44 | 39019090 | Other Polymers of ethylene | 19.1 | 0.3 | 0.3 |
| 45 | 87012920 | Tractors (other than tractors of heading 87.09) Of a vehicle mass exceeding 1 600 kg | 18.5 | 0.3 | 0.3 |
| 46 | 73089099 | Other Structures and parts of structures | 18.5 | 0.3 | 0.3 |
| 47 | 87032190 | Other vehicles, with only spark-ignition internal combustion piston engine,NES | 18.3 | 0.3 | 0.3 |
| 48 | 87033390 | Other, used vehicles of cylinder capacity exceeding 2500 cm | 17.7 | 0.3 | 0.3 |
| 49 | 84139100 | Parts: Of pumps | 17.7 | 0.3 | 0.3 |
| 50 | 22030090 | Other Beer made from malt, With an alcohol content exceeding 5 per cent | 17.4 | 0.3 | 0.2 |
| Top 50 Imported Non Diamond Goods | | | 2,849.3 | 49.4 | 40.8 |
| Other Non Diamond Imports Goods | | | 2,918.1 | 50.6 | 41.7 |
| Total Non-Diamond Goods | | | 5,767.4 | 100.0 | 82.5 |
| Diamonds Imports | | | 1,223.6 | | 17.5 |
| Total Imports | | | 6,991.0 | | 100.0 |

Table 4.1 B: Top Exported Goods (Excluding Diamonds) – March 2024 (Million Pula)

| Rank | HS Code | HS Description | BW Pula | Contribution(%) Against Total Non Diamonds Imports | Contribution(%) Against Total Imports |
|------|----------|--|---------|---|---|
| 1 | 26030000 | Copper ores and concentrates | 763.1 | 51.3 | 16.9 |
| 2 | 85443000 | Ignition wiring sets and other wiring sets of a kind used in vehicles, aircraft or ships | 135.7 | 9.1 | 3.0 |
| 3 | 28362000 | Disodium carbonate | 105.5 | 7.1 | 2.3 |
| 4 | 30024200 | Vaccines for veterinary medicine | 41.8 | 2.8 | 0.9 |
| 5 | 85444290 | Electric conductors, for a voltage <= 1.000 V, insulated, fitted with connectors, n.e.s. (other than of a kind used for telecommunications) | 38.2 | 2.6 | 0.8 |
| 6 | 02023090 | Other (boneless meat of bovine animals, frozen) | 35.5 | 2.4 | 0.8 |
| 7 | 01022100 | Pure-bred breeding animals (cattle) | 27.3 | 1.8 | 0.6 |
| 8 | 01022900 | Other (cattle) | 22.7 | 1.5 | 0.5 |
| 9 | 25010090 | Other Salt, pure sodium chloride or sea water | 22.5 | 1.5 | 0.5 |
| 10 | 39172300 | Tubes, pipes and hoses, rigid, Of polymers of vinyl chloride | 22.3 | 1.5 | 0.5 |
| 11 | 27011200 | Bituminous coal | 13.9 | 0.9 | 0.3 |
| 12 | 63026090 | Other Toilet linen and kitchen linen, of terry towelling or similar terry fabrics, of cotton | 10.3 | 0.7 | 0.2 |
| 13 | 27011900 | Other coal | 9.5 | 0.6 | 0.2 |
| 14 | 72165000 | Other angles, shapes and sections, not further worked than hot-rolled, hot-drawn or extruded | 7.6 | 0.5 | 0.2 |
| 15 | 30049099 | Other medicaments consisting of mixed or unmixed products for therapeutic or prophylactic uses | 7.5 | 0.5 | 0.2 |
| 16 | 85446090 | Electric conductors for a voltage > 1.000 V, insulated, not with copper conductors, n.e.s | 7.4 | 0.5 | 0.2 |
| 17 | 72142000 | Other bars and rods of iron or non-alloy steel - Containing indentations, ribs, grooves or other deformations produced during the rolling process or twisted after rolling | 7.0 | 0.5 | 0.2 |
| 18 | 72043000 | Waste and scrap of tinned iron or steel | 6.9 | 0.5 | 0.2 |
| 19 | 64059090 | Other footwear | 5.8 | 0.4 | 0.1 |
| 20 | 68101100 | Building blocks and bricks | 5.5 | 0.4 | 0.1 |
| 21 | 74040010 | Copper waste and scrap:Of refined copper | 5.3 | 0.4 | 0.1 |
| 22 | 85071099 | Other lead-acid, of a kind used for starting piston engines | 4.6 | 0.3 | 0.1 |
| 23 | 94069090 | Other Prefabricated buildings | 4.5 | 0.3 | 0.1 |
| 24 | 76020090 | Other aluminium waste and scrap | 3.9 | 0.3 | 0.1 |
| 25 | 84295190 | Other Machinery with a 360° revolving super structure | 3.8 | 0.3 | 0.1 |

Table 4.1 B: Top Exported Goods (Excluding Diamonds) – March 2024 (Million Pula) Continued.

| Rank | HS Code | HS Description | BW Pula | Contribution(%) Against Total Non Diamonds Imports | Contribution(%) Against Total Imports |
|--|----------|--|----------------|---|---|
| 26 | 26040000 | Nickel ores and concentrates | 3.7 | 0.2 | 0.1 |
| 27 | 85442090 | Other Co-axial cable and other co-axial electric conductors NES | 3.6 | 0.2 | 0.1 |
| 28 | 87041090 | Other- Dumpers designed for off-highway use | 3.6 | 0.2 | 0.1 |
| 29 | 63019000 | Other blankets and travelling rugs | 3.6 | 0.2 | 0.1 |
| 30 | 71081200 | Gold (including gold plated with platinum) unwrought or in semi- manufactured forms, or in powder form Other unwrought forms | 3.4 | 0.2 | 0.1 |
| 31 | 72042100 | Waste and scrap of cast iron Of stainless steel | 3.4 | 0.2 | 0.1 |
| 32 | 62171090 | Other clothing accessories | 3.4 | 0.2 | 0.1 |
| 33 | 60069000 | Other knitted or crocheted fabrics | 3.3 | 0.2 | 0.1 |
| 34 | 84869000 | PARTS AND ACCESSORIES | 3.3 | 0.2 | 0.1 |
| 35 | 24022090 | Other Cigarettes containing tobacco | 3.3 | 0.2 | 0.1 |
| 36 | 73089099 | Other Structures and parts of structures | 3.2 | 0.2 | 0.1 |
| 37 | 87042110 | Shuttle cars for use in underground mines; low construction flame-proof vehicles, equipped with control mechanisms both in the front and at the rear, for use in underground mines | 3.2 | 0.2 | 0.1 |
| 38 | 78020000 | Lead waste and scrap | 3.1 | 0.2 | 0.1 |
| 39 | 74040090 | Other copper waste and scrap | 2.9 | 0.2 | 0.1 |
| 40 | 11031310 | Maize meal not further processed other than by the addition of minerals and vitamins not exceeding 1 per cent by mass of the final product, solely for the purpose of increasing the nutritional value | 2.9 | 0.2 | 0.1 |
| 41 | 87032390 | Other motor cars and other motor vehicles principally designed for the transport of persons | 2.8 | 0.2 | 0.1 |
| 42 | 39269099 | Other articles of plastics and articles of other materials of headings .39.01 to 39.14 | 2.8 | 0.2 | 0.1 |
| 43 | 84314990 | Other parts suitable use of oth moving, grading, levelling,scraping, excavating, tamping, compacting. | 2.7 | 0.2 | 0.1 |
| 44 | 88022000 | Aeroplanes and other aircraft, of an unladen mass not exceeding 2 000 kg | 2.6 | 0.2 | 0.1 |
| 45 | 39251000 | Reservoirs, tanks, vats and similar containers, of a capacity exceeding 300 li | 2.6 | 0.2 | 0.1 |
| 46 | 41039090 | Other raw hides and skins | 2.6 | 0.2 | 0.1 |
| 47 | 42034000 | Other clothing accessories | 2.4 | 0.2 | 0.1 |
| 48 | 85285990 | Other monitors nes | 2.4 | 0.2 | 0.1 |
| 49 | 30021500 | Immunological products, put up in measured doses or in forms or packings for retail sale | 2.3 | 0.2 | 0.1 |
| 50 | 84799000 | Parts-Machinery for preparing or making up tobacco, not specified or included elsewhere in this Chapter | 2.1 | 0.1 | 0.0 |
| Top 50 Exported Non-Diamond Goods | | | 1,393.3 | 93.6 | 30.8 |
| Other Non-Diamond Exports Goods | | | 92.9 | 6.2 | 2.1 |
| Total Non-Diamond Exports | | | 1,487.8 | 100.0 | 32.9 |
| Diamonds Exports | | | 3,030.7 | | 67.1 |
| Total Exports | | | 4,518.5 | | 100.0 |

8.0 Concepts, Sources and Methods

IMTS are compiled by the International Merchandise Trade Statistics Section of Statistics Botswana, and uses the General Trade system. International Merchandise Trade refers to external trade in goods only. International Service Trade Statistics (ISTS) are however not compiled by this section. The primary source of international merchandise trade data is the Customs & Excise Division at the Botswana Unified Revenue Service (BURS). The Customs & Excise Division is responsible for data capture for both computerised and manual borders, and the monthly raw data files are transferred to Statistics Botswana for data processing.

Imports are valued CIF (cost, insurance & freight), while exports are valued FOB (free on board). The value of imports includes transport and insurance costs to the importing country. The Exports value consists only of the value of goods as they leave the exporting country.

8.1 Time of Recording of Trade

IMTS is compiled using date of recording of trade as opposed to date of assessment of goods by customs. This means that as goods cross the border, trade is recorded and this is the reference month for compilation of IMTS. Some of these goods may however be held by customs for some time pending final assessment for tax or duty purposes.

If the final assessment is done later, for example two or three months, or even more, after the goods had crossed the border, the affected trade will then update trade for the particular month when the goods crossed the border, therefore it does not form part of trade for the month during which the final assessment was done. This is mostly common with imports. Revision of data for the month preceding the one under review will normally show high values as compared to revisions for other months due to more goods (from the previous month) being released after final assessment.

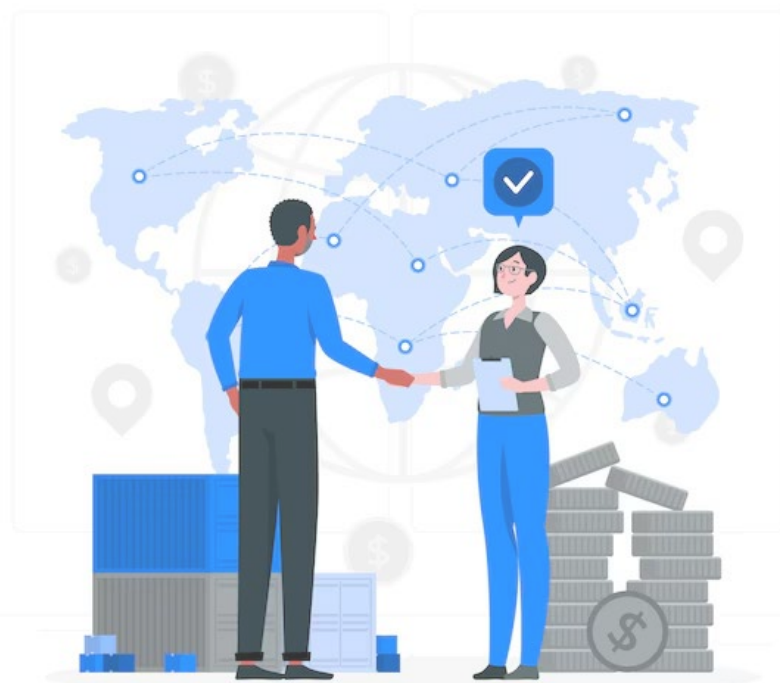
8.2 Concepts and Definitions

- i. **Domestic Exports:** These are goods originating from the compiling country, being permanently exported out of the country for consumption in the outside world. This includes products from customs inwards processing; for example, if a country imports wheat, processes the wheat into bread flour and exports the bread flour and bye products from the milling process, these will all leave the country as domestic exports.
- ii. **Re - Exports:** These are exports of foreign goods that were initially recorded as imports into the compiling country. These goods are exported in the same state that they came in except for wear and tear. An example will be re-exportation of a motor vehicle that was initially imported into the compiling country and after being used it is now being exported to a foreign country.
- iii. **Total exports:** This is the sum of domestic exports and re-exports
- iv. **Imports:** These are goods imported from the outside world, into the compiling country, for local consumption. This includes re-importation of locally produced goods that were initially exported and are now being imported back into the country.
- v. **Trade Balance (Net Export):** This refers to the total value of goods exported minus the total value of goods imported by a given economy in a given period of time. A positive trade balance (trade surplus) indicates that a country is exporting more in value terms than it is importing. A negative trade balance (trade deficit) indicates that the country is importing more than it is exporting.

8.3 Exclusions from IMTS

- i. **Goods in Transit** - This is trade that is simply passing through the compiling country solely for the purpose of being transported to another country.
- ii. **Goods temporarily admitted or dispatched** - These are goods that, at the time of admission/dispatch, are intended to stay in the receiving country temporarily and that after their stay they will be returned in the same state. These goods include display equipment for trade fairs and exhibitions, commercial samples, means of transport, containers, equipment for working, etc.
- iii. **Monetary Gold**- This is gold to which the monetary authorities have title and is held as reserve assets.
- iv. **Issued banknotes and securities and coins in circulation**-These goods represent evidence of financial claims and are excluded from IMTS

The above list of exclusions from IMTS is, however, not exhaustive and only a few that are common, simple, straightforward and easy to understand have been picked as examples.



INTERNATIONAL MERCHANDISE TRADE STATISTICS

Monthly Digest- March 2024
Version 2



Private Bag 0024, Gaborone
 Tel: 3671300 Fax: 3952201
 Toll Free: 0800 600 200

Private Bag F193,
 Francistown
 Tel: 241 5848 Fax: 241 7540

Private Bag 32
 Ghanzi
 Tel: 371 5723 Fax: 659 7506

Private Bag 47
 Maun
 Tel: 371 5716 Fax: 686 4327

E-mail: info@statsbots.org.bw Website: <http://www.statsbots.org.bw>



STATISTICS BOTSWANA