



GROSS DOMESTIC PRODUCT: FOURTH QUARTER OF 2020

March 2021

Private Bag 0024, Gaborone
Tel: 3671300 **Fax:** 3952201
Toll Free: 0800 600 200

Private Bag F193,
City of Francistown Botswana
Tel. 241 5848, **Fax.** 241 7540

Private Bag 32
Ghanzi
Tel: 371 5723 **Fax:** 659 7506

Private Bag 47
Maun
Tel: 371 5716 **Fax:** 686 4327

E-mail: info@statsbots.org.bw **Website:** <http://www.statsbots.org.bw>



STATISTICS BOTSWANA

TABLE OF CONTENTS

1.	Preface.....	3
2.	Quarterly Gross Domestic Product (GDP).....	4
2.1	Revisions in this release.....	4
2.2	Fourth quarter GDP.....	5
2.2.2	Components of GDP by Type of Expenditure.....	11
3.	Annual National Accounts.....	12
3.1.	Gross Domestic Product by Expenditure Components.....	13
Table A1:	Revisions in real percentage changes for the previous quarter.....	4
Table A2:	Key figures.....	4

1. Preface

This statistical release contains the fourth quarter of 2020 Gross Domestic Product (GDP) estimates by economic activity and components of final demand at current and constant prices.

Botswana's National Accounts are compiled according to the 1993 System of National Accounts (1993 SNA). The accounts presented in this publication adhere to the enhanced General Data Dissemination System (e-GDDS) of the International Monetary Fund (IMF), which sets out standards on coverage, periodicity and timeliness of data.

The estimates are provisional and subject to change. First estimates are normally based on limited data and hence cannot be precise and absolute. The figures are revised after receiving finalized or audited data from companies in which some differences and inconsistencies in the previously published data may be observed.


These estimates are not seasonally adjusted hence the variations may differ depending on the quarters.

The nominal Gross Domestic Product for the fourth quarter of 2020 was P48, 461.8 million compared to a revised P44, 702.9 million registered during the previous quarter. This represents a quarterly increase of 8.4 percent in nominal terms between the two periods. During the quarter under review, Trade, Hotels & Restaurants became the major contributor to GDP by 19.2 percent, followed by General Government, Finance & Business Services and Mining & Quarrying by 16.6, 15.1 and 11.9 percent respectively. The contribution of other sectors was below 7.0 percent, with Water & Electricity being the lowest at 1.3 percent.

Real GDP for the fourth quarter of 2020 decreased by 4.1 percent compared to a contraction of 6.0 percent registered in the previous quarter. The improvement in the fourth quarter GDP, reflected continued efforts to reopen businesses and resume activities that were postponed or restricted due to the COVID-19 pandemic.

Statistics Botswana acknowledges and appreciates the contribution of all stakeholders in the production of this report.

For more information and further enquiries, contact the Directorate of Stakeholder Relations at 3671300 or info@statsbots.org.bw. All Statistics Botswana outputs/publications are available on the website at www.statsbots.org.bw and at the Statistics Botswana Information Resource Center (Head-Office, Gaborone).


Dr. Burton S. Mguni
Statistician General
March 2021

2. Quarterly Gross Domestic Product (GDP)

2.1 Revisions in this release

Revisions in the National Accounts are always necessary because it allows for incorporation of additional and improved data that were not available at the release date.

Revisions have been made to the quarterly Gross Domestic Product (GDP) estimates published in December 2020. The changes were due to the updated source data and have affected Water & Electricity, Trade, Hotels & Restaurants industries and Taxes on imports.

Table A1: Revisions in real percentage changes for the previous quarter

	Publication December 2020	Publication March 2021
Industries	2020 Q3	2020 Q3
Water & Electricity	45.2	33.5
Trade, Hotels & Restaurants	-15.3	-14.3
Taxes on imports	11.6	9.0
Total GDP	-6.0	-6.0

Table A2: Key figures

	Real Gross Domestic Product		Total Final Consumption		Gross Fixed Capital Formation	
	Percentage Change					
	Quarter-on-Quarter	Year-on-Year	Quarter-on-Quarter	Year-on-Year	Quarter-on-Quarter	Year-on-Year
First quarter 2016	3.5	2.2	2.3	2.6	-5.8	3.5
Second quarter 2016	1.8	3.9	-4.9	0.7	11.0	6.6
Third quarter 2016	-1.1	6.9	3.8	2.6	-1.4	1.1
Fourth quarter 2016	0.1	4.3	1.9	3.0	0.3	3.5
First quarter 2017	0.1	1.0	1.2	1.9	-12.6	-3.9
Second quarter 2017	1.8	0.9	-0.7	6.4	-4.2	-17.1
Third quarter 2017	1.4	3.4	3.9	6.4	8.7	-8.6
Fourth quarter 2017	3.0	6.4	1.2	5.6	4.2	-5.1
First quarter 2018	-1.8	4.3	1.2	5.6	-1.2	7.2
Second quarter 2018	2.7	5.3	-0.8	5.5	1.5	13.6
Third quarter 2018	0.2	4.1	1.5	3.1	1.9	6.5
Fourth quarter 2018	3.1	4.2	0.0	1.9	3.4	5.6
First quarter 2019	-1.8	4.3	0.4	1.1	-1.2	5.6
Second quarter 2019	1.5	3.1	1.9	3.9	4.2	8.3
Third quarter 2019	0.3	3.1	0.9	3.2	1.1	7.5
Fourth quarter 2019	1.7	1.7	4.3	7.7	0.9	4.9
First quarter 2020	-0.9	2.7	-2.4	4.7	3.8	10.3
Second quarter 2020	-24.8	-24.0	-7.5	-5.0	-36.4	-32.7
Third quarter 2020	24.1	-6.0	9.0	2.7	37.3	-8.6
Fourth quarter 2020	3.7	-4.1	4.7	3.1	8.9	-1.3

2.2 Fourth quarter GDP

2.2.1 Key Findings

GDP at constant 2006 prices for the fourth quarter of 2020 was P24, 264.4 million compared to the revised P23, 393.1 million recorded in the third quarter of 2020 (See table 3).

The real GDP declined by 4.1 percent during the period under review, compared to an increase of 1.7 percent in the same quarter of 2019. The contraction in the domestic economy was observed across all sectors except Government, Agriculture, Finance & Business Services and Social & Personal Services. The unfavorable performance of the economy was mainly due to the impact of measures that were put in place to combat the spread of the COVID-19 pandemic (See table 4).

Non-Mining GDP

The Non-mining GDP decreased by 2.0 percent in the fourth quarter of 2020 compared to 2.9 percent increase registered in the same quarter of the previous year.

Figure 1: Real GDP growth rates

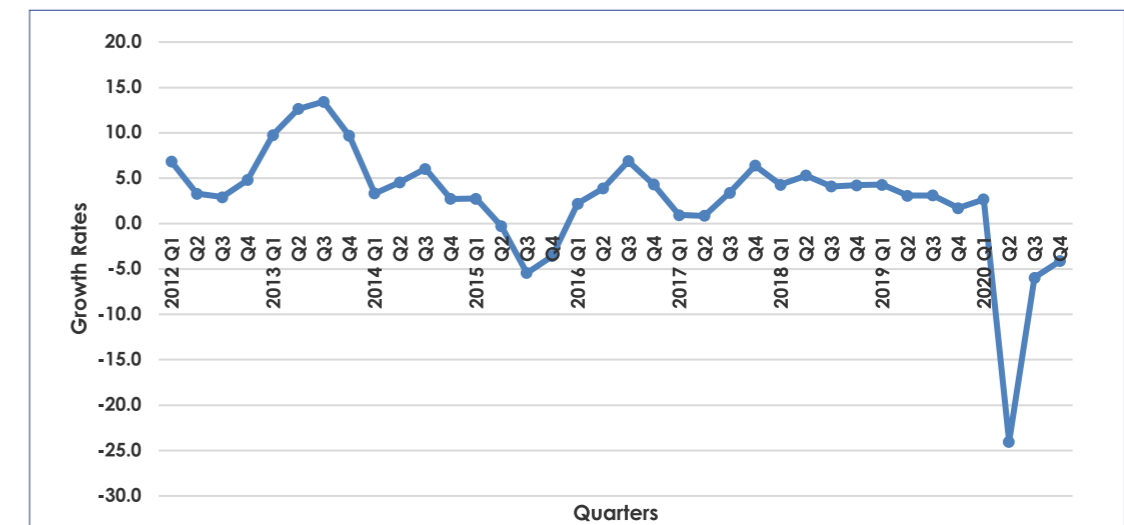
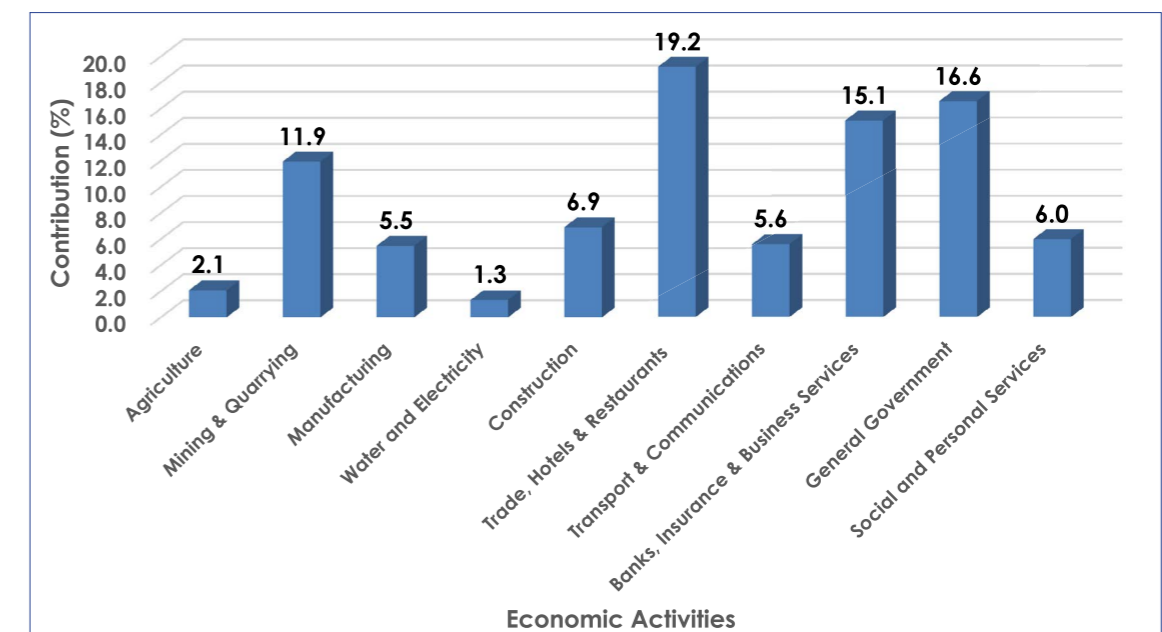


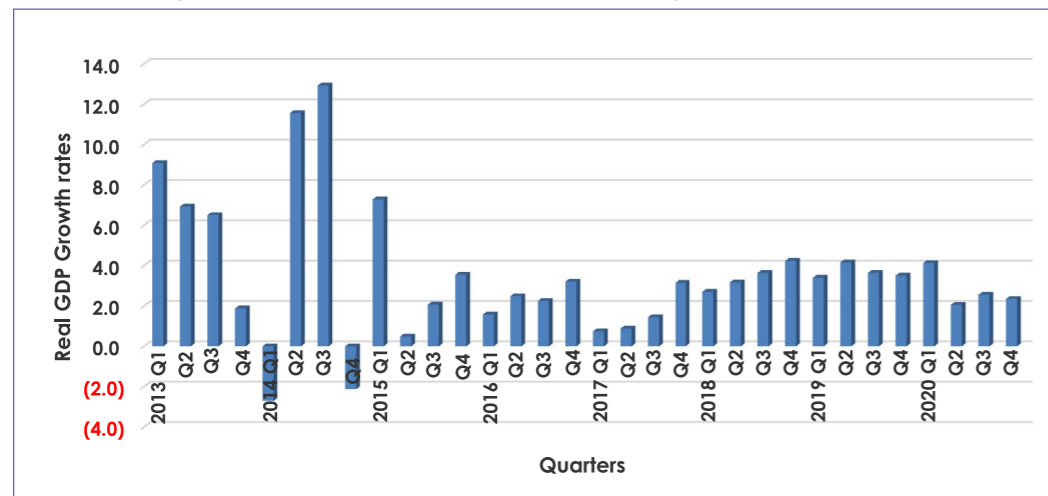
Figure 2: Contributions to GDP by Economic Activities (2020 Q4)



General Government

The General Government sector increased by 2.3 percent in real value added compared to 3.5 percent during the corresponding quarter of 2019. The positive performance is mainly attributed to the wide range of support measures implemented to mitigate the impact of COVID-19 on the economy and society.

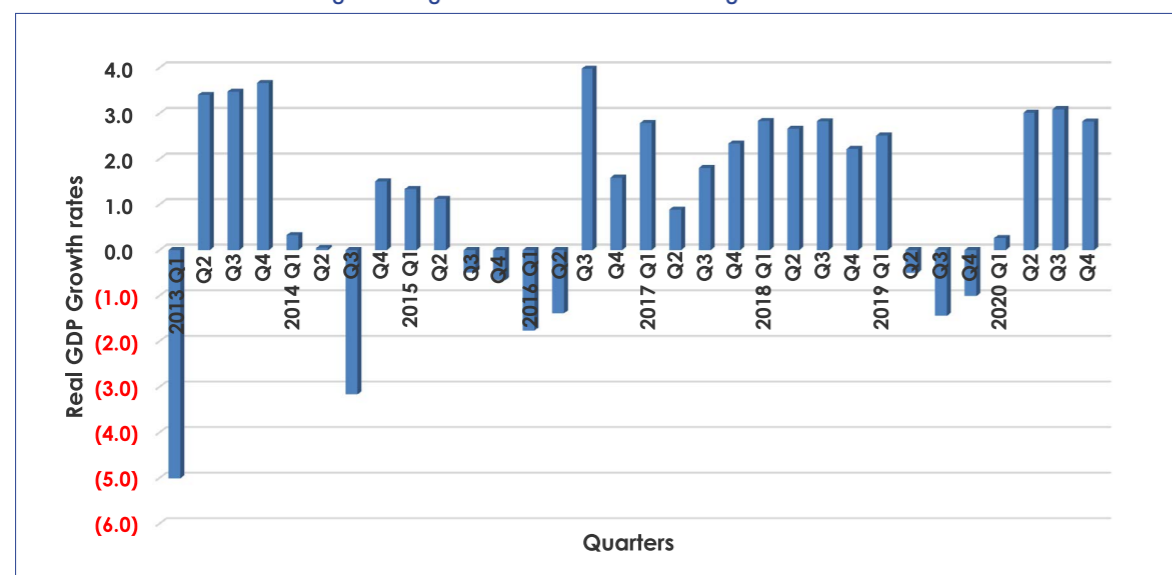
Figure 3: General Government real value added growth rates



Agriculture

The Agriculture industry increased by 2.8 percent in real value added during the fourth quarter of 2020, relative to a contraction of 1.0 percent registered during the same quarter of 2019. The main driver of the improved performance stems from an increase in real value added of Horticulture, Crops and Livestock farming sub-industries, which posted growth of 2.1, 1.2 and 1.1 percent respectively.

Figure 4: Agriculture real value added growth rates



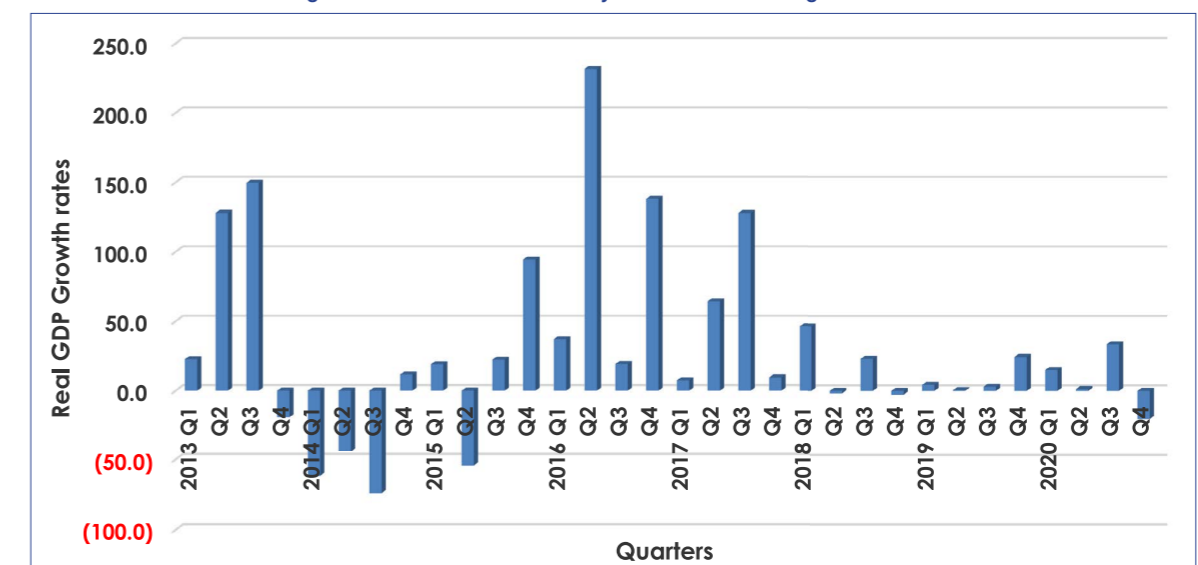
Water and Electricity

Water and Electricity value added at constant 2006 prices for the fourth quarter of 2020 was P260.8 million compared to P326.8 million registered in the same quarter of 2019, recording a contraction of 20.2 percent.

In the fourth quarter of 2020, Electricity recorded a negative value added of P8.4 million compared to P86.0 million registered in the same quarter of 2019, which was a significant decrease of 109.8 percent. The local electricity production decreased by 7.0 percent because only one unit was operational at Morupule B power station.

The water industry recorded a value added of P271.0 million compared to P242.8 million registered in the same quarter of the previous year, registering an increase of 11.6 percent. Water consumption in kilolitres from all Management Centers rose by 39.6 percent during the quarter under review.

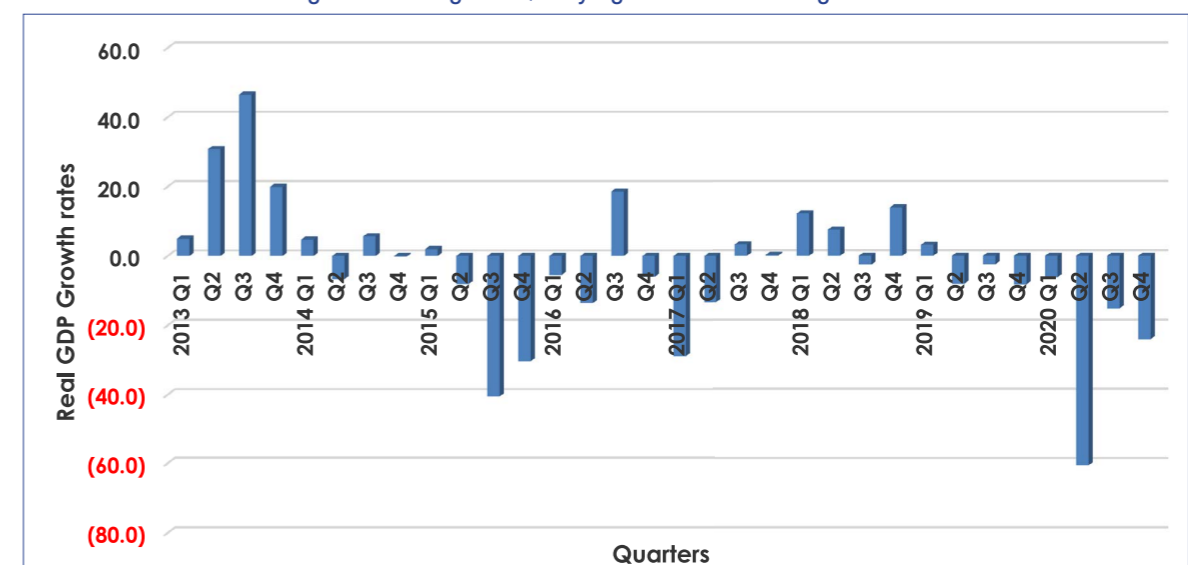
Figure 5: Water and Electricity real value added growth rates



Mining and Quarrying

A decrease in the real value added of Mining by 24.1 percent was mainly influenced by Diamond and Coal real value added. Diamond production in carats went down by 28.2 percent while Coal production in tonnes decreased by 6.1 percent. The poor performance of the diamond sub-industry is attributed to the reduction in production due to weak demand from global markets. With regard to Coal, there was lower demand at Morupule B power plant due to ongoing remedial works.

Figure 6: Mining and Quarrying real value added growth rates



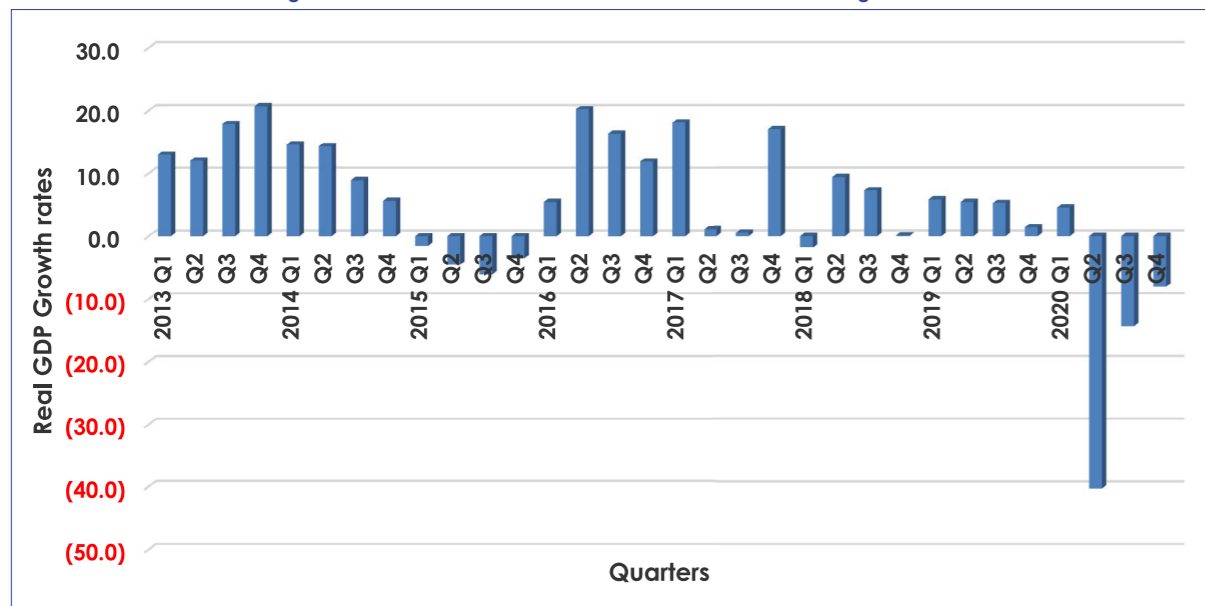
Trade, Hotels and Restaurants

Trade, Hotels and Restaurants real value added declined by 8.1 percent in the fourth quarter of 2020 compared to an increase of 1.4 percent registered in the same quarter of the previous year. The reduction is largely attributed to a decrease of 27.8 percent in real value added of the Hotels & Restaurants sub-industry.

The suspension of air travel occasioned by Covid-19 containment measures impacted on the number of tourists entering the borders of the country and hence affecting the output of Hotels and Restaurants industry. COVID-19 restriction measures resulted in reduced demand for leisure and conferencing activities, as conferences are held through virtual platforms.

Nevertheless, increased economic activities were reported for Wholesale and Retail trade by 5.5 and 5.3 percent respectively. The positive growth in the Wholesale value added is due to improved performance of downstream diamond industries during the quarter under review.

Figure 7: Trade, Hotels & Restaurants real value added growth rates

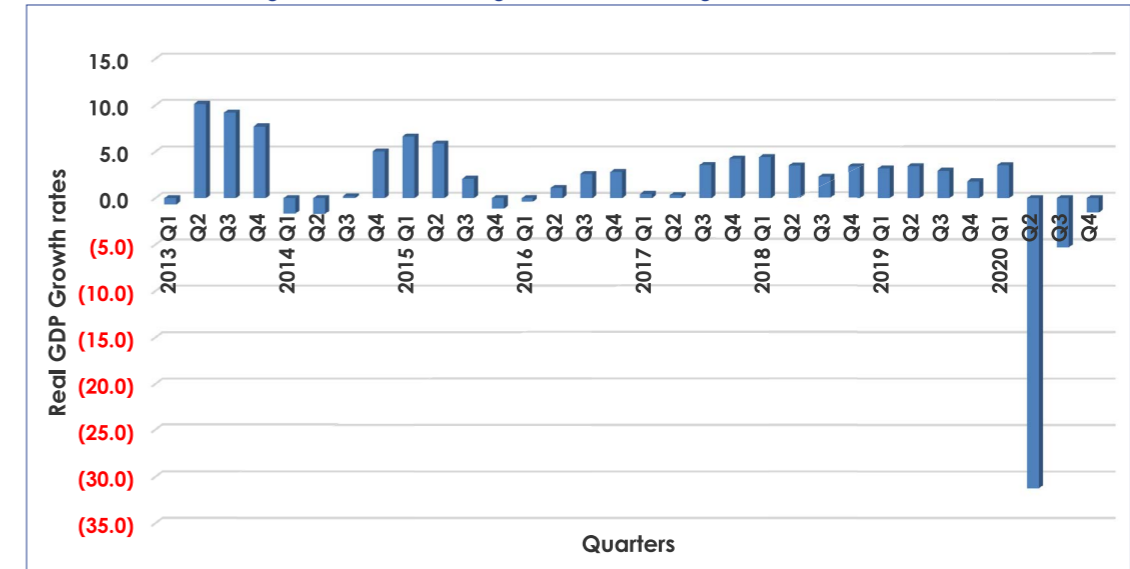


Manufacturing

The Manufacturing industry recorded a decline of 1.5 percent in real value added during the fourth quarter of 2020, compared to a growth of 1.8 percent registered in the corresponding quarter of 2019.

The contractionary performance in the industry is observed across the majority of the sub-industries except the Textile and Clothing sub industry. The reduction is attributed to a decline in the real value added of Meat & meat products and Beverages by 3.5 and 3.3 percent respectively.

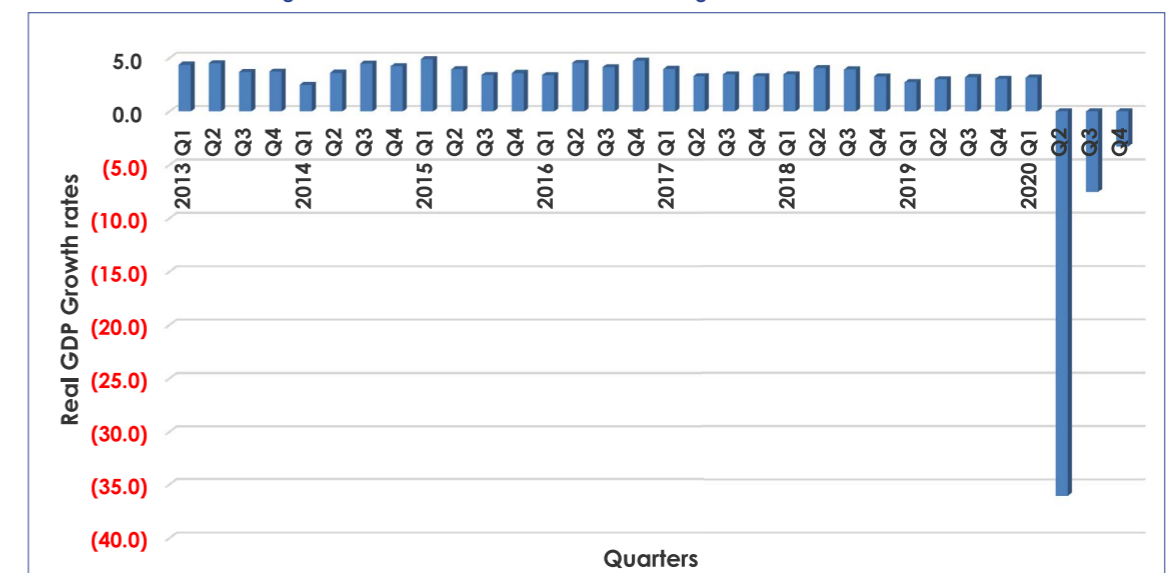
Figure 8: Manufacturing real value added growth rates



Construction

The Construction industry recorded a decline of 3.3 percent compared to an increase of 3.1 percent realized in the corresponding quarter in 2019. This industry comprises of buildings construction, civil engineering and specialized construction activities. The industry is showing signs of recovery from the consequences of COVID-19 pandemic. The industry recorded a negative growth of 7.6 percent in the previous quarter.

Figure 9: Construction real value added growth rates



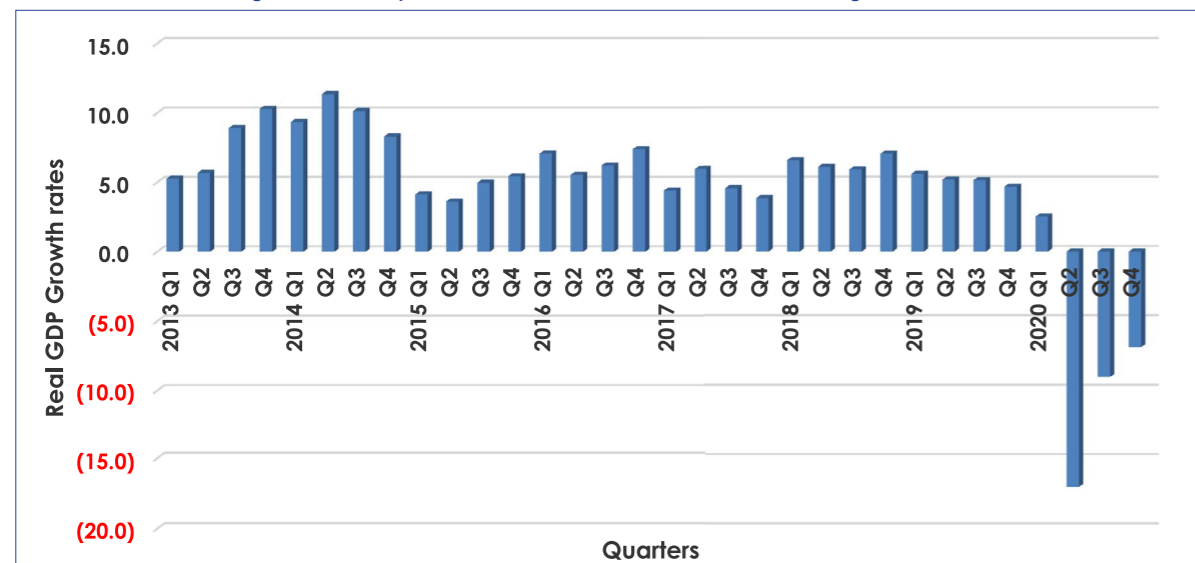
Transport and Communications

The Transport and Communications value added decreased by 6.9 percent in the fourth quarter of 2020, compared to a 4.7 percent increase recorded in the same quarter of the previous year. The negative performance of the industry was mainly attributed to the decline in real value added of Air and Rail Transport by 81.1 and 11.1 percent respectively.

The significant reduction in Air Transport services was due to the suspension of air travel occasioned by Covid-19 containment measures. Rail goods traffic in tonnes went down by 8.7 percent and passenger rail transport was not operating during the quarter under review.

However, a strong performance was observed in the Information and Communications industry which recorded a growth of 5.6 percent in real value added for the fourth quarter of 2020, compared to an increase of 6.6 percent registered in the corresponding quarter of 2019. The strong performance is attributed to the high demand for data services and internet connectivity in all sectors of the economy.

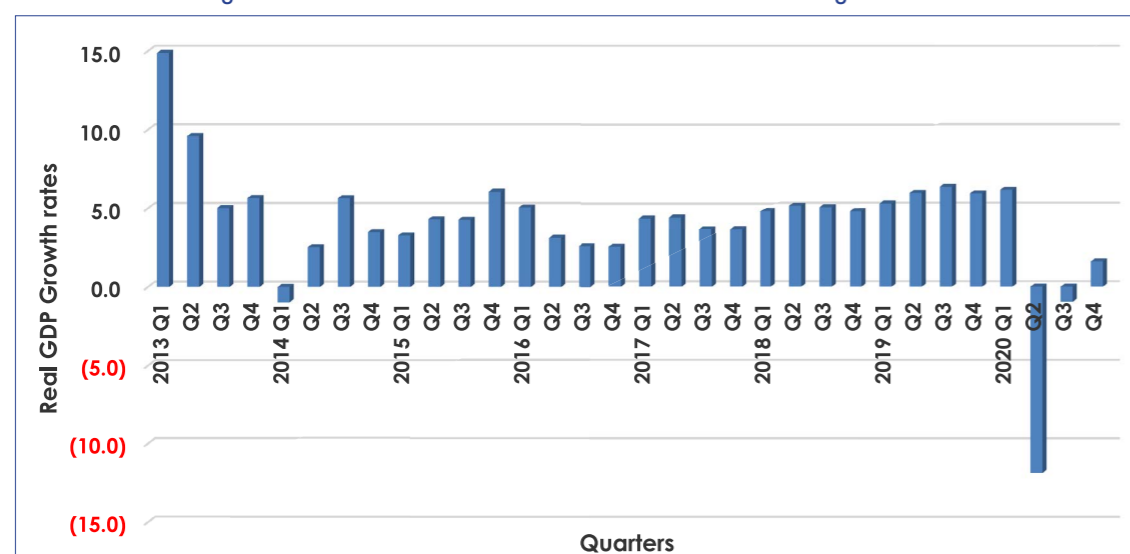
Figure 10: Transport & Communications real value added growth rates



Finance and Business Services

The Finance and Business Services industry registered a positive growth of 1.6 percent due to the favorable performance from Banks and Business Services by 4.2 and 1.2 percent respectively.

Figure 11: Finance and Business Services real value added growth rates



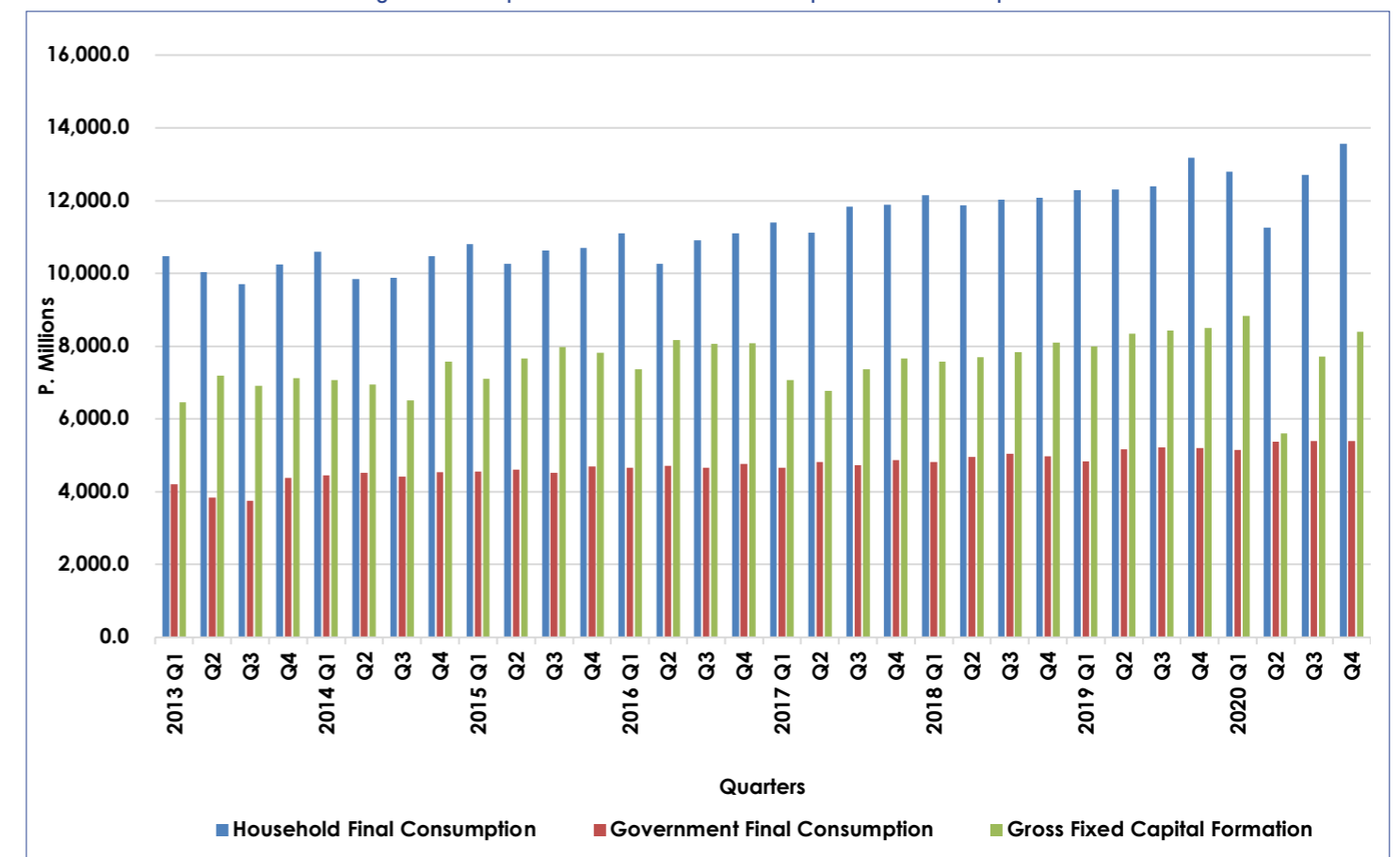
2.2.2 Components of GDP by Type of Expenditure

Total final consumption expenditure recorded an increase of 3.1 percent in the fourth quarter of 2020 compared to 7.7 percent recorded in the corresponding quarter of 2019. Household Final Consumption increased by 2.8 percent while Gross Fixed Capital Formation went down by 1.3 percent. Government Final Consumption rose by 3.7 percent in the quarter under review.

In the case of foreign trade, real exports of goods and services increased by 20.0 percent in the fourth quarter of 2020 compared to a decline of 28.4 percent realised in the same quarter of 2019. Diamond is a major export commodity. The year on year growth of diamond exports indicates a significant increase of 32.0 percent.

Real Imports of goods and services increased by 8.2 percent during the quarter under review, compared to 6.8 percent increase registered in the same quarter of the previous year.

Figure 12: Components of Gross Domestic Expenditure at 2006 prices



3. Annual National Accounts

GDP at current prices stood at P180, 798.7 million in 2020 compared to P197, 503.6 million in 2019, recording a decrease of 8.5 percent.

Real GDP decreased by 7.9 percent in 2020 compared to a 3.0 percent increase in 2019. The contraction in real GDP was mainly attributed to Mining, Trade, Hotels & Restaurants and Construction industries which recorded a decrease in real value added of 26.2, 14.8, and 11.0 percent respectively. (See table 4).

The decrease of 26.2 percent in the real value added of the Mining industry was mainly due to the reduction in the real value added of Diamond, Soda Ash and Coal by 28.8, 10.1 and 8.7 percent respectively.

Trade, Hotels and Restaurants real value added decreased by 14.8 percent in 2020. The negative growth was mainly driven by the huge decrease in real value added of Hotels and Restaurants by 33.3 percent.

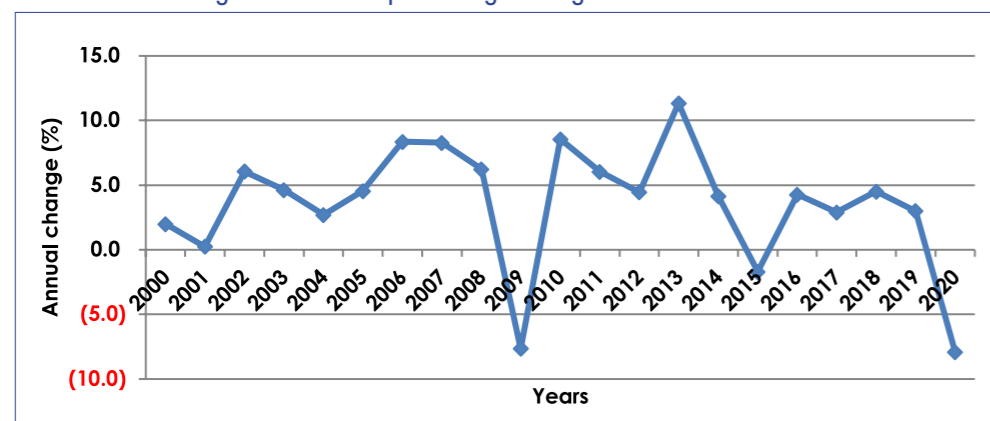
The poor performance of the economy was mainly due to the impact of measures that were put in place to combat the spread of the Coronavirus.

Contribution to GDP by industry is shown in table 2. In 2020, Trade, Hotels & Restaurants and General Government industries remained major contributors to GDP at 18.7 and 17.2 percent, respectively. They were followed by Finance & Business Services & Mining by 15.3 and 11.5 percent respectively (See table 2).

Table A3: Annual percentage change in Real GDP by Economic Activity

	2016	2017	2018	2019	2020
Agriculture	0.6	1.9	2.6	-0.1	2.3
Mining	-3.5	-11.1	7.6	-4.1	-26.2
Manufacturing	1.6	2.2	3.4	2.8	-8.7
Water & Electricity	95.2	39.9	11.3	8.4	5.1
Construction	4.2	3.5	3.7	3.0	-11.0
Trade, Hotels & Restaurants	13.4	9.0	3.6	4.5	-14.8
Transport and Communication	6.6	4.7	6.4	5.2	-7.7
Finance & Business Services	3.3	4.1	5.0	5.9	-1.2
General Government	2.4	1.5	3.4	3.7	2.8
Social and personal Services	3.5	2.8	3.6	3.0	-1.9
Total Value Added	4.8	2.8	4.5	3.2	-8.4
Taxes Less Subsidies	0.0	3.8	4.3	1.3	-3.3
Total GDP	4.3	2.9	4.5	3.0	-7.9

Figure 13: Annual percentage change in real GDP



3.1. Gross Domestic Product by Expenditure Components

Table A4: Annual percentage change in Real GDP by Expenditure

	2018	2019	2020
Total final consumption expenditure	4.0	4.0	1.4
Household Final Consumption Expenditure	4.1	4.3	0.3
Final Consumption of NPISH	3.7	3.1	-1.3
Government Final Consumption Expenditure	3.7	3.3	4.3
Gross Capital Formation Expenditure	8.1	6.6	-8.2
Gross Domestic Expenditure	5.2	9.5	1.9
Exports of Goods and Services	7.2	-16.1	-21.4
Imports of Goods and Services	11.8	11.7	4.3
Gross Domestic Product	4.5	3.0	-7.9

Real Gross Domestic Expenditure rose by 1.9 percent in 2020. Total final demand increased by 1.4 percent compared to 4.0 percent realised in 2019. Gross Fixed Capital Formation went down by 8.2 percent.

In the case of foreign trade, real exports of goods and services decreased by 21.4 percent in 2020 compared to a decrease of 16.1 percent in 2019, while real imports of goods and services rose by 4.3 percent as opposed to an increase of 11.7 percent in 2019.

Figure 14: Components of Gross Domestic Expenditure at constant 2006 Price

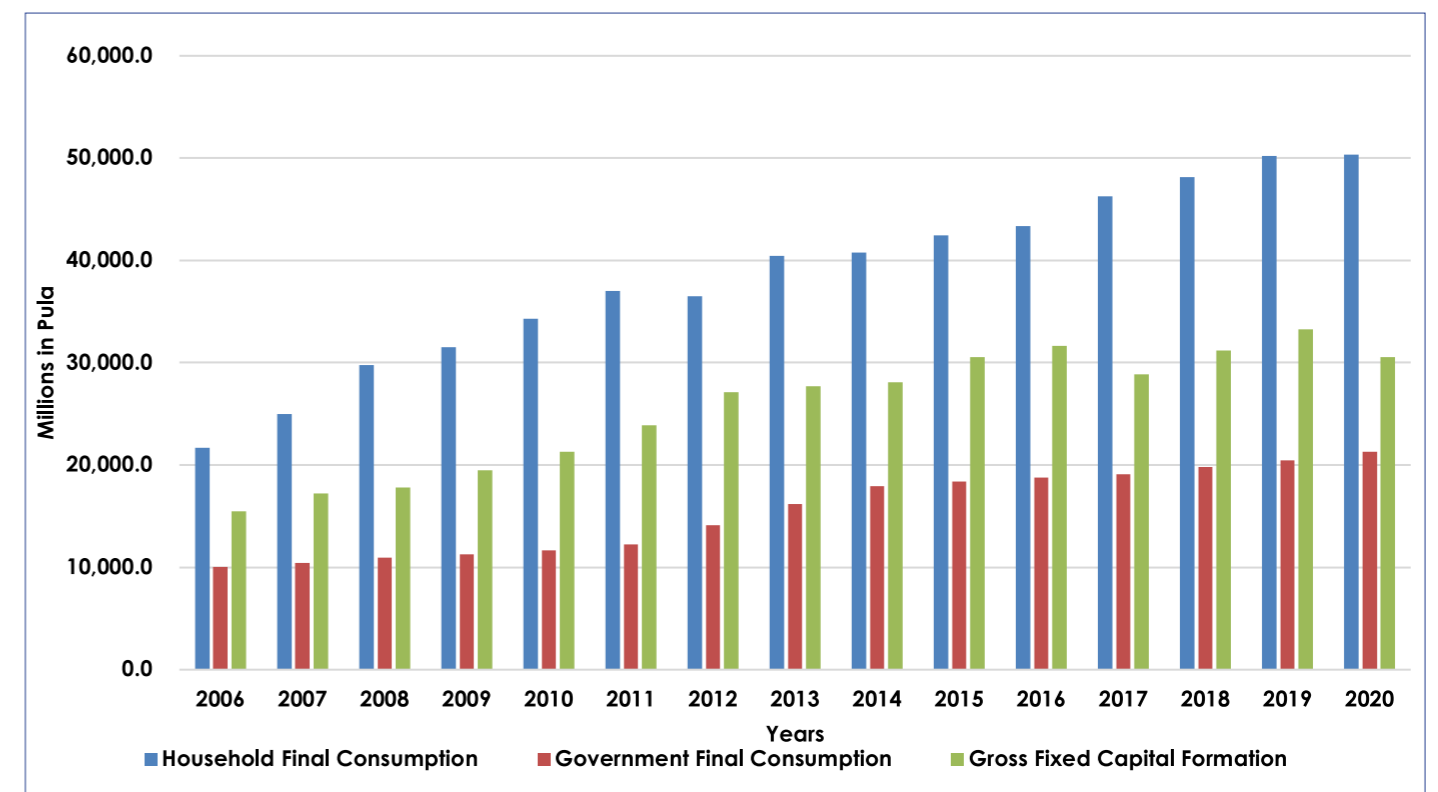


Table A5: GDP per capita (Pula)

Year	Nominal GDP per capita	Real GDP per capita
1994	7,869.2	22,793.4
1995	8,800.8	23,789.8
1996	10,550.8	24,562.5
1997	11,707.1	25,958.7
1998	12,615.7	25,437.9
1999	15,627.3	27,583.6
2000	17,991.2	27,814.8
2001	19,077.2	27,229.8
2002	20,097.5	28,349.6
2003	21,311.8	29,113.9
2004	23,650.1	29,350.0
2005	28,026.8	30,121.2
2006	32,038.3	32,038.3
2007	35,727.9	34,050.1
2008	39,021.1	35,509.2
2009	37,656.0	32,186.9
2010	43,705.9	34,298.6
2011	51,844.3	35,702.1
2012	53,116.0	36,507.0
2013	59,313.9	39,846.8
2014	67,868.0	40,743.3
2015	66,822.0	39,380.8
2016	76,841.0	40,450.3
2017	79,903.7	40,991.5
2018	83,176.2	42,178.1
2019	85,002.6	42,803.5
2020	76,135.5	38,575.1

TABLES

Figure 15: Nominal and Real GDP Per Capita (Pula)

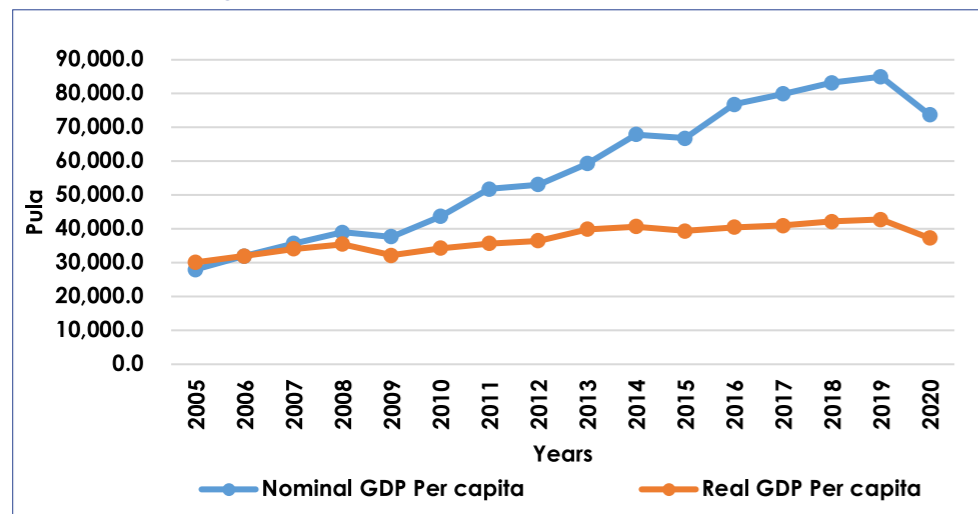


Table 1: Value Added by Kind of Economic Activity at Current Prices (P million)

Calendar year	Agriculture	Mining	Manufacturing	Water & Electricity	Construction	Trade, Hotels & Restaurants	Transport & Communication	Finance & Business Service	General Government	Social & Personal Services	Value Added	Taxes on Import	Other Taxes on products	Subsidies	Total GDP
2004	949.9	10,801.5	2,334.8	806.8	2,376.3	5,116.3	1,449.5	5,330.5	6,151.8	2,110.2	37,427.5	2,746.9	2,086.7	-224.6	42,036.6
2005	927.9	16,105.1	2,512.0	714.9	2,417.8	5,498.9	1,825.1	5,918.6	7,195.5	2,544.4	45,660.2	3,174.9	2,172.2	-255.1	50,752.2
2006	1,210.7	19,019.0	3,123.1	785.1	2,838.0	7,032.3	2,250.5	6,675.4	7,818.5	2,938.9	53,691.6	3,428.8	2,276.3	-289.8	59,106.9
2007	1,504.7	19,567.7	4,206.6	751.5	3,544.1	8,243.6	2,697.3	7,653.0	8,887.4	3,255.8	60,311.7	4,290.5	2,879.7	-329.2	67,152.7
2008	1,887.5	18,643.5	4,278.9	654.1	3,726.9	10,047.1	3,303.9	9,316.7	10,899.5	3,847.4	66,605.5	4,701.4	3,788.1	-374.0	74,720.9
2009	2,071.0	11,209.6	4,662.3	317.2	4,495.0	11,162.8	3,993.0	9,694.7	12,316.3	4,593.3	64,515.2	4,535.3	4,836.6	-424.9	73,462.3
2010	2,161.3	16,660.8	5,548.3	411.9	5,056.1	13,084.3	4,470.8	11,609.7	13,377.3	5,242.7	77,623.1	4,425.0	5,252.1	-432.7	86,867.5
2011	2,636.0	24,529.1	6,074.2	-58.8	6,247.3	15,595.3	5,113.9	13,978.7	14,777.6	5,881.2	94,774.4	5,055.4	5,598.3	-448.3	104,979.8
2012	2,961.3	19,286.5	6,523.2	-621.2	7,464.5	16,896.7	6,325.3	16,467.8	16,923.7	6,750.2	98,978.1	5,560.5	5,804.8	-472.9	109,870.4
2013	2,876.9	24,243.4	7,285.1	-123.2	7,997.9	21,211.3	6,906.2	17,717.0	17,731.0	7,344.1	113,189.7	6,403.1	6,083.2	-517.7	125,158.3
2014	3,045.3	32,403.3	7,740.3	-581.5	8,689.7	26,182.3	7,788.2	19,284.3	19,946.0	8,138.4	132,636.4	7,107.4	6,691.5	-566.6	145,868.6
2015	3,215.0	25,962.2	8,441.7	-219.2	9,606.6	23,711.4	8,559.3	21,517.5	22,491.1	8,653.0	131,938.6	7,541.6	7,205.1	-619.0	146,066.3
2016	3,496.1	34,912.5	8,859.5	395.0	10,574.9	30,997.2	9,642.7	23,348.8	23,926.8	9,259.3	155,412.9	8,054.3	7,782.0	-685.2	170,564.1
2017	3,583.8	31,261.8	9,214.5	1,770.1	11,487.6	35,059.5	10,622.7	25,049.5	25,839.7	9,899.4	163,788.4	8,656.3	8,378.5	-720.4	180,102.9
2018	3,794.3	31,414.5	9,794.7	2,301.2	12,574.6	36,652.6	11,508.7	26,889.1	27,538.3	10,502.2	172,970.3	9,113.3	9,066.8	-785.1	190,365.3
2019	3,845.3	29,939.2	10,352.5	1,996.1	13,422.7	38,819.7	12,129.7	28,123.3	29,812.8	11,046.3	179,487.6	9,323.6	9,567.0	-874.6	197,503.6
2020	3,876.3	20,776.8	9,781.1	2,403.5	12,300.4	33,767.5	10,519.1	27,620.9	31,105.4	10,967.5	163,118.5	9,885.1	8,697.2	-902.1	180,798.7
2004 Q1	185.5	2,721.9	569.5	183.1	604.5	1,261.8	346.5	1,261.5	1,429.6	509.3	9,073.3	549.5	681.8	-51.3	10,253.3
Q2	317.6	1,348.6	582.2	194.3	586.3	1,294.1	337.0	1,253.5	1,522.9	513.2	7,949.9	768.1	412.6	-57.4	9,073.2
Q3	265.1	3,647.8	571.9	208.5	607.9	1,279.8	375.6	1,389.7	1,602.8	537.0	10,486.1	719.3	326.1	-54.7	11,476.8
Q4	181.6	3,083.2	611.2	220.9	577.5	1,280.5	390.5	1,425.8	1,596.4	550.7	9,918.3	710.0	666.3	-61.1	11,233.4
2005 Q1	222.2	4,040.3	606.6	160.4	576.5	1,237.7	404.7	1,405.4	1,615.8	588.7	10,858.3	798.4	744.7	-58.3	12,343.1
Q2	254.2	2,939.0	620.9	174.0	595.1	1,323.6	416.5	1,427.3	1,693.5	610.0	10,054.2	718.5	419.1	-65.2	11,126.7
Q3	288.6	5,341.3	634.7	183.7	615.1	1,405.6	492.5	1,518.6	1,852.6	661.1	12,993.9	646.9	609.0	-62.2	14,187.7
Q4	162.9	3,784.5	649.8	196.7	631.0	1,532.0	511.4	1,567.3	2,033.6	684.7	11,753.8	1,011.1	399.3	-69.5	13,094.7
2006 Q1	350.2	4,483.6	715.1	170.4	664.5	1,676.4	524.4	1,648.8	1,723.6	718.3	12,675.4	766.1	626.8	-66.3	14,002.0
Q2	258.4	3,463.4	722.3	177.9	685.7	1,700.0	550.0	1,649.0	2,001.7	725.2	11,933.6	848.6	501.7	-74.0	13,209.9
Q3	355.1	5,746.3	812.6	205.4	803.9	1,789.6	569.2	1,734.1	2,028.3	756.8	14,801.2	951.5	533.6	-70.6	16,215.7
Q4	247.0	5,325.6	873.1	231.4	683.9	1,866.3	606.9	1,643.5	2,064.9	738.7	14,281.4	862.6	614.2	-78.9	15,679.3
2007 Q1	319.9	4,938.4	938.7	195.3	774.8	1,927.0	603.9	1,897.3	2,021.5	761.2	14,378.0	814.2	617.0	-75.3	15,733.9
Q2	478.6	3,760.5	1,092.6	193.6	859.3	2,037.4	669.8	1,907.7	2,251.5	789.7	14,040.8	1,145.0	672.7	-84.1	15,774.4
Q3	456.6	6,165.2	1,100.1	183.8	898.7	2,035.8	698.4	1,974.1	2,299.5	854.7	16,666.9	1,160.1	767.4	-80.2	18,514.2
Q4	249.6	4,703.6	1,075.2	178.8	1,011.3	2,243.4	725.1	1,873.9	2,314.7	850.2	15,225.9	1,171.3	822.6	-89.6	17,130.1
2008 Q1	416.0	4,966.0	940.5	150.8	853.8	2,269.1	779.2	2,032.1	2,326.4	900.4	15,634.3	1,130.1	805.7	-85.5	17,484.6
Q2	452.7	3,584.5	1,123.3	159.0	918.1	2,452.9	806.5	2,171.4	2,782.2	906.0	15,356.7	1,171.4	854.4	-95.5	17,286.9
Q3	558.8	5,395.9	1,132.1	161.1	948.1	2,583.8	844.7	2,514.3	2,864.1	1,003.0	18,006.0	1,194.7	1,039.3	-91.1	20,148.9
Q4	460.0	4,697.1	1,083.0	183.2	1,006.8	2,741.2	873.5	2,598.9	2,926.9	1,037.9	17,608.6	1,205.1	1,088.6	-101.8	19,800.4
2009 Q1	428.6	1,950.5	1,100.1	83.1	1,060.6	2,725.5	909.6	2,374.6	2,881.6	1,123.8	14,637.9	1,007.4	1,047.9	-97.1	16,596.0
Q2	535.8	3,272.8	1,202.2	79.2	1,137.9	2,882.6	950.4	2,365.8	3,093.0	1,122.8	16,642.5	1,089.0	1,108.7	-108.5	18,731.5
Q3	603.5	2,519.6	1,147.9	65.2	1,199.7	2,841.3	1,031.5	2,377.3	3,156.2	1,191.7	16,134.0	1,155.4	1,286.0	-103.5	18,471.9
Q4	503.1	3,466.7	1,212.1	89.6	1,096.9	2,713.4	1,101.5	2,577.1	3,185.5	1,154.9	17,101.0	1,283.6	1,394.1	-115.7	19,663.0
2010 Q1	490.8	3,242.2	1,277.1	128.2	1,153.3	2,943.0	1,040.7	2,703.1	3,136.9	1,261.5	17,376.6	1,082.3	1,257.7	-98.9	19,617.7
Q2	595.0	3,759.1	1,357.3	101.1	1,150.6	3,267.1	1,080.3	2,881.7	3,179.0	1,302.7	18,673.9	1,049.8	1,301.7	-110.5	20,914.9
Q3	580.3	5,085.7	1,412.3	85.5	1,351.0	3,496.6	1,165.3	2,911.5	3,338.1	1,355.8	20,782.1	1,102.3	1,327.7	-105.4	23,106.7
Q4	495.2	4,573.8	1,501.6	97.1	1,401.3	3,377.5	1,184.5	3,113.3	3,723.4	1,322.8	20,790.5	1,190.5	1,364.9	-117.8	23,228.1

Table 1 Continued: Value Added by Kind of Economic Activity at Current Prices (P million)

Calendar year	Agriculture	Mining	Manufacturing	Water & Electricity	Construction	Trade, Hotels & Restaurants	Transport & Communication	Finance & Business Service	General Government	Social & Personal Services	Value Added	Taxes on Import	Other Taxes on products	Subsidies	Total GDP
2011 Q1	499.9	5,824.8	1,362.8	-0.1	1,424.7	3,821.3	1,201.2	3,162.6	3,021.0	1,328.4	21,646.7	897.4	1,433.1	-114.3	23,862.8
Q2	667.8	6,113.8	1,426.5	-11.2	1,472.6	3,716.6	1,235.1	3,352.9	3,725.1	1,441.8	23,141.1	1,412.1	1,473.4	-102.2	25,924.5
Q3	716.1	6,598.8	1,585.0	-39.6	1,638.1	3,839.1	1,324.9	3,624.8	3,677.8	1,492.5	24,457.6	1,412.0	1,201.6	-113.9	26,957.3
Q4	752.2	5,991.6	1,699.8	-7.9	1,711.8	4,218.3	1,352.7	3,838.5	4,353.7	1,618.4	25,529.1	1,333.9	1,490.2	-117.9	28,235.3
2012 Q1	728.0	4,617.1	1,601.4	-23.3	1,830.9	4,211.2	1,509.2	3,790.4	3,681.4	1,609.6	23,555.9	1,235.0	1,368.9	-115.8	26,044.1
Q2	796.0	5,524.0	1,627.7	-265.7	1,859.2	4,173.6	1,564.6	4,072.5	4,145.2	1,687.8	25,184.9	1,267.2	1,390.5	-116.6	27,726.0
Q3	808.9	4,443.1	1,668.5	-167.5	1,878.9	4,258.9	1,617.1	4,235.0	4,268.4	1,709.6	24,721.0	1,431.0	1,509.0	-119.2	27,541.9
Q4	628.4	4,702.3	1,625.6	-164.7	1,895.5	4,253.0	1,634.4	4,369.9	4,828.7	1,743.1	25,516.2	1,627.2	1,536.4	-121.4	28,558.5
2013 Q1	649.3	4,670.5	1,725.8	-4.6	1,954.4	4,822.0	1,661.8	4,296.6	3,981.8	1,742.6	25,500.4	1,580.3	1,468.5	-124.4	28,424.7
Q2	780.6	7,933.6	1,784.4	-126.1	1,988.8	5,006.6	1,677.4	4,377.4	4,346.5	1,833.7	29,603.0	1,511.0	1,472.5	-125.6	32,460.9
Q3	704.0	6,124.0	1,865.3	63.5	2,000.0	5,451.6	1,749.6	4,424.3	4,422.3	1,864.2	28,668.7	1,571.7	1,557.5	-132.3	31,665.4
Q4	743.0	5,515.3	1,909.6	-56.0	2,054.7	5,931.1	1,817.4	4,618.7	4,980.4	1,903.6	29,417.7	1,740.1	1,584.8	-135.4	32,607.2
2014 Q1	721.2	7,270.3	1,784.5	-295.0	2,139.5	6,378.5	1,924.2	4,637.1	4,717.0	1,982.8	31,260.1	1,759.4	1,636.5	-141.5	34,514.6
Q2	774.2	9,402.0	1,898.4	110.9	2,205.0	6,554.0	1,922.3	4,734.7	4,875.5	2,020.5	34,497.4	1,714.3	1,654.3	-140.0	37,726.0
Q3	762.1	7,289.1	1,986.3	-25.5	2,161.4	6,674.8	1,954.3	4,905.1	5,055.7	2,053.3	32,816.8	1,788.3	1,694.0	-143.4	36,155.7
Q4	787.8	8,441.8	2,071.1	-371.9	2,183.8	6,575.1	1,987.3	5,007.4	5,297.8	2,081.9	34,062.1	1,845.4	1,706.6	-141.8	37,472.3

Table 2: Contribution of Gross Value Added to GDP by Kind of Economic Activity at Current Prices

Calendar year	Agriculture	Mining	Manufacturing	Water & Electricity	Construction	Trade, Hotels & Restaurants	Transport & Communication	Finance & Business Service	General Government	Social & Personal Services	Value Added	Taxes on Import	Other Taxes on products	Subsidies	Total GDP
2004	2.3	25.7	5.6	1.9	5.7	12.2	3.4	12.7	14.6	5.0	89.0	6.5	5.0	-0.5	100.0
2005	1.8	31.7	4.9	1.4	4.8	10.8	3.6	11.7	14.2	5.0	90.0	6.3	4.3	-0.5	100.0
2006	2.0	32.2	5.3	1.3	4.8	11.9	3.8	11.3	13.2	5.0	90.8	5.8	3.9	-0.5	100.0
2007	2.2	29.1	6.3	1.1	5.3	12.3	4.0	11.4	13.2	4.8	89.8	6.4	4.3	-0.5	100.0
2008	2.5	25.0	5.7	0.9	5.0	13.4	4.4	12.5	14.6	5.1	89.1	6.3	5.1	-0.5	100.0
2009	2.8	15.3	6.3	0.4	6.1	15.2	5.4	13.2	16.8	6.3	87.8	6.2	6.6	-0.6	100.0
2010	2.5	19.2	6.4	0.5	5.8	15.1	5.1	13.4	15.4	6.0	89.4	5.1	6.0	-0.5	100.0
2011	2.5	23.4	5.8	-0.1	6.0	14.9	4.9	13.3	14.1	5.6	90.3	4.8	5.3	-0.4	100.0
2012	2.7	17.6	5.9	-0.6	6.8	15.4	5.8	15.0	15.4	6.1	90.1	5.1	5.3	-0.4	100.0
2013	2.3	19.4	5.8	-0.1	6.4	16.9	5.5	14.2	14.2	5.9	90.4	5.1	4.9	-0.4	100.0
2014	2.1	22.2	5.3	-0.4	6.0	17.9	5.3	13.2	13.7	5.6	90.9	4.9	4.6	-0.4	100.0
2015	2.2	17.8	5.8	-0.2	6.6	16.2	5.9	14.7	15.4	5.9	90.3	5.2	4.9	-0.4	100.0
2016	2.0	20.5	5.2	0.2	6.2	18.2	5.7	13.7	14.0	5.4	91.1	4.7	4.6	-0.4	100.0
2017	2.0	17.4	5.1	1.0	6.4	19.5	5.9	13.9	14.3	5.5	90.9	4.8	4.7	-0.4	100.0
2018	2.0	16.5	5.1	1.2	6.6	19.3	6.0	14.1	14.5	5.5	90.9	4.8	4.8	-0.4	100.0
2019	1.9	15.2	5.2	1.0	6.8	19.7	6.1	14.2	15.1	5.6	90.9	4.7	4.8	-0.4	100.0
2020	2.1	11.5	5.4	1.3	6.8	18.7	5.8	15.3	17.2	6.1	90.2	5.5	4.8	-0.5	100.0
2004 Q1	1.8	26.5	5.6	1.8	5.9	12.3	3.4	12.3	13.9	5.0	88.5	5.4	6.6	-0.5	100.0
2004 Q2	3.5	14.9	6.4	2.1	6.5	14.3	3.7	13.8	16.8	5.7	87.6	8.5	4.5	-0.6	100.0
2004 Q3	2.3	31.8	5.0	1.8	5.3	11.2	3.3	12.1	14.0	4.7	91.4	6.3	2.8	-0.5	100.0
2004 Q4	1.6	27.4	5.4	2.0	5.1	11.4	3.5	12.7	14.2	4.9	88.3	6.3	5.9	-0.5	100.0
2005 Q1	1.8	32.7	4.9	1.3	4.7	10.0	3.3	11.4	13.1	4.8	88.0	6.5	6.0	-0.5	100.0
2005 Q2	2.3	26.4	5.6	1.6	5.3	11.9	3.7	12.8	15.2	5.5	90.4	6.5	3.8	-0.6	100.0
2005 Q3	2.0	37.6	4.5	1.3	4.3	9.9	3.5	10.7	13.1	4.7	91.6	4.6	4.3	-0.4	100.0
2005 Q4	1.2	28.9	5.0	1.5	4.8	11.7	3.9	12.0	15.5	5.2	89.8	7.7	3.0	-0.5	100.0
2006 Q1	2.5	32.0	5.1	1.2	4.7	12.0	3.7	11.8	12.3	5.1	90.5	5.5	4.5	-0.5	100.0
2006 Q2	2.0	26.2	5.5	1.3	5.2	12.9	4.2	12.5	15.2	5.5	90.3	6.4	3.8	-0.6	100.0
2006 Q3	2.2	35.4	5.0	1.3	5.0	11.0	3.5	10.7	12.5	4.7	91.3	5.9	3.3	-0.4	100.0
2006 Q4	1.6	34.0	5.6	1.5	4.4	11.9	3.9	10.5	13.2	4.7	91.1	5.5	3.9	-0.5	100.0
2007 Q1	2.0	31.4	6.0	1.2	4.9	12.2	3.8	12.1	12.8	4.8	91.4	5.2	3.9	-0.5	100.0
2007 Q2	3.0	23.8	6.9	1.2	5.4	12.9	4.2	12.1	14.3	5.0	89.0	7.3	4.3	-0.5	100.0
2007 Q3	2.5	33.3	5.9	1.0	4.9	11.0	3.8	10.7	12.4	4.6	90.0	6.3	4.1	-0.4	100.0
2007 Q4	1.5	27.5	6.3	1.0	5.9	13.1	4.2	10.9	13.5	5.0	88.9	6.8	4.8	-0.5	100.0
2008 Q1	2.4	28.4	5.4	0.9	4.9	13.0	4.5	11.6	13.3	5.1	89.4	6.5	4.6	-0.5	100.0
2008 Q2	2.6	20.7	6.5	0.9	5.3	14.2	4.7	12.6	16.1	5.2	88.8	6.8	4.9	-0.6	100.0
2008 Q3	2.8	26.8	5.6	0.8	4.7	12.8	4.2	12.5	14.2	5.0	89.4	5.9	5.2	-0.5	100.0
2008 Q4	2.3	23.7	5.5	0.9	5.1	13.8	4.4	13.1	14.8	5.2	88.9	6.1	5.5	-0.5	100.0
2009 Q1	2.6	11.8	6.6	0.5	6.4	16.4	5.5	14.3	17.4	6.8	88.2	6.1	6.3	-0.6	100.0
2009 Q2	2.9	17.5	6.4	0.4	6.1	15.4	5.1	12.6	16.5	6.0	88.8	5.8	5.9	-0.6	100.0
2009 Q3	3.3	13.6	6.2	0.4	6.5	15.4	5.6	12.9	17.1	6.5	87.3	6.3	7.0	-0.6	100.0
2009 Q4	2.6	17.6	6.2	0.5	5.6	13.8	5.6	13.1	16.2	5.9	87.0	6.5	7.1	-0.6	100.0
2010 Q1	2.5	16.5	6.5	0.7	5.9	15.0	5.3	13.8	16.0	6.4	88.6	5.5	6.4	-0.5	100.0
2010 Q2	2.8	18.0	6.5	0.5	5.5	15.6	5.2	13.8	15.2	6.2	89.3	5.0	6.2	-0.5	100.0
2010 Q3	2.5	22.0	6.1	0.4	5.8	15.1	5.0	12.6	14.4	5.9	89.9	4.8	5.7	-0.5	100.0
2010 Q4	2.1	19.7	6.5	0.4	6.0	14.5	5.1	13.4	16.0	5.7	89.5	5.1	5.9	-0.5	100.0

Table 2 Continued : Contribution of Gross Value Added to GDP by Kind of Economic Activity at Current Prices

Calendar year	Agriculture	Mining	Manufacturing	Water & Electricity	Construction	Trade, Hotels & Restaurants	Transport & Communication	Finance & Business Service	General Government	Social & Personal Services	Value Added	Taxes on Import	Other Taxes on products	Subsidies	Total GDP
2011 Q1	2.1	24.4	5.7	0.0	6.0	16.0	5.0	13.3	12.7	5.6	90.7	3.8	6.0	-0.5	100.0
2011 Q2	2.6	23.6	5.5	0.0	5.7	14.3	4.8	12.9	14.4	5.6	89.3	5.4	5.7	-0.4	100.0
2011 Q3	2.7	24.5	5.9	-0.1	6.1	14.2	4.9	13.4	13.6	5.5	90.7	5.2	4.5	-0.4	100.0
2011 Q4	2.7	21.2	6.0	0.0	6.1	14.9	4.8	13.6	15.4	5.7	90.4	4.7	5.3	-0.4	100.0
2012 Q1	2.8	17.7	6.1	-0.1	7.0	16.2	5.8	14.6	14.1	6.2	90.4	4.7	5.3	-0.4	100.0
2012 Q2	2.9	19.9	5.9	-1.0	6.7	15.1	5.6	14.7	15.0	6.1	90.8	4.6	5.0	-0.4	100.0
2012 Q3	2.9	16.1	6.1	-0.6	6.8	15.5	5.9	15.4	15.5	6.2	89.8	5.2	5.5	-0.4	100.0
2012 Q4	2.2	16.5	5.7	-0.6	6.6	14.9	5.7	15.3	16.9	6.1	89.3	5.7	5.4	-0.4	100.0
2013 Q1	2.3	16.4	6.1	0.0	6.9	17.0	5.8	15.1	14.0	6.1	89.7	5.6	5.2	-0.4	100.0
2013 Q2	2.4	24.4	5.5	-0.4	6.1	15.4	5.2	13.5	13.4	5.6	91.2	4.7	4.5	-0.4	100.0
2013 Q3	2.2	19.3	5.9	0.2	6.3	17.2	5.5	14.0	14.0	5.9	90.5	5.0	4.9	-0.4	100.0
2013 Q4	2.3	16.9	5.9	-0.2	6.3	18.2	5.6	14.2	15.3	5.8	90.2	5.3	4.9	-0.4	100.0
2014 Q1	2.1	21.1	5.2	-0.9	6.2	18.5	5.6	13.4	13.7	5.7	90.6	5.1	4.7	-0.4	100.0
2014 Q2	2.1	24.9	5.0	0.3	5.8	17.4	5.1	12.6	12.9	5.4	91.4	4.5	4.4	-0.4	100.0
2014 Q3	2.1	20.2	5.5	-0.1	6.0	18.5	5.4	13.6	14.0	5.7	90.8	4.9	4.7	-0.4	100.0
2014 Q4	2.1	22.5	5.5	-1.0	5.8	17.5	5.3	13.4	14.1	5.6	90.9	4.9	4.6	-0.4	100.0
2015 Q1	2.1	20.8	5.6	-0.8	6.4	16.8	5.5	13.8	14.7	5.8	90.8	5.0	4.6	-0.4	100.0
2015 Q2	2.2	20.5	5.6	0.0	6.5	15.4	5.6	14.3	14.9	5.7	90.6	5.1	4.7	-0.4	100.0
2015 Q3	2.1	18.6	5.7	0.0	6.4	15.5	5.9	14.7	15.5	5.8	90.3	5.2	5.0	-0.4	100.0
2015 Q4	2.4	10.8	6.2	0.3	7.0	17.4	6.4	16.2	16.5	6.4	89.6	5.4	5.4	-0.5	100.0
2016 Q1	2.1	19.1	5.4	-0.2	6.4	17.5	5.7	14.1	14.9	5.7	90.6	5.1	4.7	-0.4	100.0
2016 Q2	2.1	20.5	5.1	0.2	6.1	18.8	5.6	13.5	14.0	5.4	91.2	4.7	4.6	-0.4	100.0
2016 Q3	2.0	22.0	5.1	0.0	6.1	18.2	5.6	13.4	13.7	5.3	91.4	4.5	4.5	-0.4	100.0
2016 Q4	2.0	20.1	5.2	0.9	6.2	18.2	5.8	13.9	13.6	5.4	91.3	4.7	4.5	-0.4	100.0
2017 Q1	2.0	17.8	4.9	0.4	6.3	20.5	5.9	14.0	14.0	5.5	91.2	4.8	4.4	-0.4	100.0
2017 Q2	2.0	17.5	5.1	1.0	6.4	18.9	5.9	13.9	14.7	5.5	91.0	4.9	4.6	-0.4	100.0
2017 Q3	2.0	18.8	5.2	1.2	6.4	17.8	5.9	13.7	14.4	5.4	90.7	4.8	4.9	-0.4	100.0
2017 Q4	2.0	15.4	5.2	1.3	6.5	20.7	5.9	14.0	14.4	5.5	90.9	4.8	4.7	-0.4	100.0
2018 Q1	2.0	16.0	5.0	1.3	6.5	19.0	6.1	14.4	14.6	5.6	90.6	5.0	4.7	-0.4	100.0
2018 Q2	2.0	15.8	5.1	1.3	6.6	20.0	6.0	14.2	14.5	5.5	91.1	4.8	4.5	-0.4	100.0
2018 Q3	2.0	18.3	5.2	1.2	6.6	18.3	6.0	13.8	14.2	5.4	90.9	4.6	4.9	-0.4	100.0
2018 Q4	1.9	15.9	5.3	1.0	6.7	19.8	6.1	14.1	14.6	5.5	90.8	4.7	4.9	-0.4	100.0
2019 Q1	1.9	16.7	4.9	1.2	6.6	19.0	6.0	14.0	14.8	5.5	90.8	4.9	4.8	-0.4	100.0
2019 Q2	2.0	14.9	5.2	1.1	6.7	20.3	6.1	14.2	15.1	5.6	91.0	4.8	4.6	-0.4	100.0
2019 Q3	2.0	15.3	5.4	1.0	6.9	19.3	6.2	14.2	15.1	5.6	90.9	4.6	5.0	-0.4	100.0
2019 Q4	1.9	13.8	5.4	0.8	6.9	20.0	6.3	14.5	15.4	5.7	90.8	4.6	5.0	-0.5	100.0
2020 Q1	1.7	15.4	5.1	0.8	6.8	19.6	6.2	14.4	15.3	5.6	91.0				

Table 3: Value Added by Kind of Economic Activity at Constant 2006 Prices (P million)

Calendar year	Agriculture	Mining	Manufacturing	Water & Electricity	Construction	Trade, Hotels & Restaurants	Transport & Communication	Finance & Business Service	General Government	Social & Personal Services	Value Added	Taxes on Import	Other Taxes on products	Subsidies	Total GDP
2004	1,095.8	16,705.0	2,555.2	886.8	2,478.5	5,321.5	1,735.0	6,273.1	8,081.8	2,176.8	47,309.3	2,882.1	2,212.5	-236.1	52,167.7
2005	1,068.2	18,087.7	2,602.4	762.2	2,448.6	5,521.2	1,978.4	6,361.8	7,993.5	2,582.6	49,406.7	3,202.9	2,192.6	-257.4	54,544.8
2006	1,210.7	19,019.0	3,123.1	785.1	2,838.0	7,032.3	2,250.5	6,675.4	7,818.5	2,938.9	53,691.6	3,428.8	2,276.3	-289.8	59,106.9
2007	1,358.9	18,113.7	3,925.6	746.3	3,497.0	8,104.3	2,597.5	7,425.6	8,256.2	3,179.8	57,205.0	4,261.2	2,859.9	-327.0	63,999.1
2008	1,385.7	18,160.9	3,824.9	795.5	3,524.3	9,560.9	2,862.0	8,293.4	8,276.6	3,663.9	60,348.0	4,434.1	3,566.5	-352.6	67,996.1
2009	1,474.0	10,466.0	4,016.5	753.9	3,958.8	9,929.8	3,285.3	8,414.9	8,510.5	4,076.2	54,885.9	4,004.4	4,278.1	-375.6	62,792.8
2010	1,559.7	12,596.2	4,173.5	844.2	4,101.3	10,852.0	3,496.8	9,379.2	9,150.6	4,329.7	60,483.3	3,679.4	4,367.1	-359.8	68,170.1
2011	1,562.4	11,782.2	4,647.3	555.4	5,047.2	12,348.0	3,708.6	10,098.0	9,723.1	4,689.7	64,161.9	4,028.0	4,460.6	-357.2	72,293.3
2012	1,429.1	11,101.2	4,819.5	402.9	5,774.8	13,188.0	4,111.9	11,018.1	9,993.4	5,191.9	67,030.9	4,331.0	4,521.3	-368.4	75,514.8
2013	1,448.1	13,784.3	5,134.4	674.9	6,010.9	15,298.3	4,422.6	11,973.5	10,592.0	5,607.6	74,946.6	4,886.7	4,642.6	-395.1	84,080.7
2014	1,443.1	13,851.1	5,160.3	298.5	6,234.7	16,933.1	4,854.6	12,291.2	11,079.4	5,843.3	77,989.3	5,145.8	4,844.7	-410.3	87,569.5
2015	1,447.7	11,132.2	5,327.4	319.4	6,481.6	16,267.6	5,075.5	12,843.7	11,442.4	6,055.2	76,392.7	5,174.3	4,940.2	-424.6	86,082.6
2016	1,456.2	10,737.7	5,410.1	623.5	6,755.3	18,453.3	5,408.1	13,268.8	11,714.0	6,266.6	80,093.6	5,153.7	4,978.5	-438.3	89,787.5
2017	1,484.4	9,545.1	5,528.3	872.1	6,993.0	20,106.1	5,661.0	13,806.3	11,895.1	6,441.1	82,332.5	5,339.7	5,167.1	-444.4	92,394.9
2018	1,523.5	10,267.1	5,715.5	970.5	7,251.5	20,823.5	6,024.2	14,490.7	12,303.4	6,670.6	86,040.4	5,496.8	5,467.3	-471.5	96,533.1
2019	1,521.2	9,851.3	5,877.7	1,052.0	7,469.8	21,750.7	6,335.9	15,344.1	12,755.2	6,868.4	88,826.4	5,493.5	5,635.3	-499.2	99,455.9
2020	1,556.3	7,266.5	5,366.8	1,106.2	6,647.6	18,535.3	5,849.2	15,153.4	13,106.9	6,735.7	81,323.9	5,747.7	5,057.2	-524.6	91,604.1
2004 Q1	224.0	3,333.2	623.7	221.4	663.0	1,352.4	436.4	1,544.3	1,895.8	546.0	10,840.2	621.2	770.7	-58.0	12,174.0
Q2	369.1	3,552.5	620.5	209.3	608.9	1,354.2	396.5	1,477.6	2,054.1	526.6	11,169.3	809.4	434.8	-60.5	12,353.1
Q3	302.9	4,921.1	638.9	219.4	629.8	1,317.7	444.7	1,617.3	2,077.1	549.3	12,718.4	731.9	331.7	-55.7	13,726.4
Q4	199.8	4,898.1	672.0	236.7	576.8	1,297.1	457.4	1,633.8	2,054.6	554.8	12,581.3	719.6	675.3	-62.0	13,914.2
2005 Q1	270.8	3,807.3	618.9	190.4	614.3	1,313.8	465.4	1,550.2	1,878.8	627.5	11,337.2	807.8	753.5	-59.0	12,839.5
Q2	290.4	4,333.9	627.7	186.9	612.0	1,350.1	460.8	1,507.9	1,936.1	630.7	11,936.5	725.8	423.4	-65.8	13,019.9
Q3	324.3	4,923.6	679.7	188.9	611.9	1,386.0	527.1	1,658.4	2,020.4	660.8	12,981.1	652.3	614.1	-62.7	14,184.8
Q4	182.8	5,023.0	676.1	196.1	610.4	1,471.3	525.2	1,645.3	2,158.2	663.7	13,151.9	1,016.9	401.6	-69.9	14,500.6
2006 Q1	342.4	4,585.3	746.6	193.6	677.3	1,733.6	540.2	1,685.7	1,790.2	740.2	13,035.1	791.9	646.9	-68.5	14,405.4
Q2	244.3	4,577.9	734.5	191.5	680.2	1,710.6	553.9	1,643.9	2,024.1	728.5	13,089.3	853.7	503.8	-74.5	14,372.3
Q3	376.6	4,985.1	804.9	196.4	798.4	1,763.6	567.5	1,719.8	1,997.8	745.4	13,955.4	940.8	526.7	-69.8	15,353.1
Q4	247.4	4,870.7	837.1	203.6	682.1	1,824.5	588.9	1,626.1	2,006.4	724.9	13,611.8	842.5	598.9	-77.1	14,976.1
2007 Q1	332.6	4,517.8	931.8	193.1	791.7	1,957.8	602.0	1,923.3	1,966.2	769.2	13,985.4	810.4	614.2	-74.9	15,335.1
Q2	411.0	4,441.3	1,032.6	192.2	851.5	2,026.7	650.5	1,843.8	2,132.9	780.1	14,362.6	1,139.6	669.5	-83.7	16,088.0
Q3	409.1	4,523.4	999.9	183.0	879.4	1,981.0	667.9	1,922.4	2,094.2	823.4	14,483.8	1,151.5	761.8	-79.6	16,317.6
Q4	206.2	4,631.2	961.3	178.0	974.4	2,138.9	677.1	1,736.1	2,062.9	807.0	14,373.1	1,159.7	814.4	-88.8	16,258.4
2008 Q1	302.4	4,700.9	893.7	188.2	907.0	2,303.4	697.1	1,848.4	1,840.6	917.7	14,599.5	1,098.3	783.1	-83.1	16,397.8
Q2	404.1	4,570.7	1,020.1	194.2	874.9	2,375.3	705.7	2,075.4	2,141.6	877.4	15,239.5	1,108.0	808.2	-90.4	17,065.3
Q3	393.3	4,892.7	985.3	199.6	864.7	2,396.9	723.5	2,091.1	2,142.1	922.9	15,612.1	1,112.6	967.8	-84.9	17,607.6
Q4	285.9	3,996.5	925.8	213.5	877.7	2,485.2	735.6	2,278.6	2,152.3	945.8	14,896.9	1,115.3	1,007.4	-94.2	16,925.3
2009 Q1	373.1	2,011.2	1,036.1	171.4	977.2	2,466.2	774.8	2,135.5	2,061.2	1,023.9	13,030.5	931.5	971.4	-89.8	14,843.7
Q2	360.6	2,721.6	1,040.6	185.4	999.8	2,584.3	787.6	2,093.6	2,158.3	1,006.1	13,938.0	975.3	995.4	-97.2	15,811.5
Q3	404.8	2,616.2	943.4	184.9	1,035.2	2,504.3	846.0	2,016.1	2,149.1	1,040.0	13,740.1	1,008.1	1,124.9	-90.3	15,782.8
Q4	335.5	3,117.0	996.4	212.2	946.5	2,375.0	876.9	2,169.7	2,142.0	1,006.2	14,177.3	1,089.5	1,186.2	-98.2	16,354.8
2010 Q1	355.1	3,148.6	995.2	234.5	963.4	2,536.8	831.0	2,252.4	2,218.9	1,083.9	14,619.9	910.0	1,057.4	-83.2	16,504.1
Q2	432.8	2,905.5	1,024.9	202.3	940.2	2,719.6	848.2	2,368.4	2,253.0	1,081.3	14,776.1	874.4	1,084.1	-92.1	16,642.5
Q3	413.8	3,474.0	1,049.3	208.3	1,078.3	2,808.9	906.9	2,303.4	2,327.5	1,099.7	15,670.2	914.2	1,101.1	-87.5	17,598.1
Q4	358.0	3,068.1	1,104.1	199.1	1,119.5	2,786.7	910.7	2,455.0	2,351.2	1,064.8	15,417.2	980.8	1,124.5	-97.1	17,425.4

Table 3 Continued : Value Added by Kind of Economic Activity at Constant 2006 Prices (P million)

Calendar year	Agriculture	Mining	Manufacturing	Water & Electricity	Construction	Trade, Hotels & Restaurants	Transport & Communication	Finance & Business Service	General Government	Social & Personal Services	Value Added	Taxes on Import	Other Taxes on products	Subsidies	Total GDP
2011 Q1	350.7	3,021.8	1,123.2	148.6	1,183.9	3,144.7	912.6	2,478.9	2,211.0	1,130.8	15,706.2	713.0	1,163.4	-92.9	17,489.7
Q2	388.1	3,096.8	1,098.5	141.5	1,183.9	2,949.1	904.9	2,465.1	2,400.2	1,120.3	15,748.4	1,141.5	1,178.6	-81.8	17,986.8
Q3	397.2	2,914.4	1,166.5	120.0	1,320.4	3,011.0	944.5	2,479.2	2,377.7	1,198.3	15,929.2	1,127.2	951.7	-90.2	17,917.8
Q4	426.5	2,749.3	1,259.1	145.2	1,359.0	3,243.3	946.6	2,674.8	2,734.1	1,240.4	16,778.2	1,046.3	1,166.8	-92.3	18,899.0
2012 Q1	366.1	2,934.8	1,234.5	167.9	1,422.2	3,196.4	1,014.0	2,647.2	2,514.7	1,243.2	16,741.0	965.2	1,069.7	-90.5	18,685.5
Q2	358.3	2,917.5	1,174.0	83.2	1,438.6	3,241.8	1,025.4	2,688.9	2,391.9	1,281.7	16,601.3	988.0	1,084.0	-90.9	18,582.4
Q3	359.4	2,224.0	1,208.4	92.8	1,452.2	3,370.3	1,038.9	2,811.3	2,363.8	1,323.4	16,244.5	1,114.0	1,174.5	-92.8	18,440.3
Q4	345.3	3,025.0	1,202.5	59.0	1,461.8	3,379.6	1,033.6	2,870.8	2,722.9	1,343.6	17,444.0	1,263.7	1,193.1	-94.2	19,806.6
2013 Q1	347.7	3,081.0	1,226.1	205.8	1,484.7	3,612.4	1,067.5	3,041.1	2,743.3	1,379.3	18,188.9	1,253.0	1,164.8	-98.7	20,508.0
Q2	370.5	3,816.9	1,293.3	189.7	1,503.8	3,632.4	1,083.6	2,946.8	2,557.4	1,385.7	18,780.1	1,137.4	1,108.9	-94.6	20,931.9
Q3	371.9	3,258.7	1,319.6	231.6	1,506.0	3,973.0	1,131.5	2,952.6	2,517.5	1,404.0	18,666.5	1,180.2	1,169.9	-99.4	20,917.2
Q4	358.0	3,627.7	1,295.4	47.7	1,516.5	4,080.4	1,140.0	3,033.0	2,773.8	1,438.6	19,311.1	1,316.1	1,199.0	-102.4	21,723.7
2014 Q1	348.9	3,226.5	1,205.8	78.8	1,521.8	4,140.0	1,167.2	3,011.5	2,668.8	1,434.7	18,804.0	1,286.6	1,203.0	-104.0	21,189.6
Q2	370.7	3,561.6	1,271.4	106.2	1,558.3	4,153.7	1,206.6	3,021.3	2,853.2	1,446.8	19,549.7	1,238.1	1,201.1	-101.6	21,887.2
Q3	360.1	3,442.9	1,322.4	60.3	1,573.7	4,328.9	1,246.2	3,119.2	2,842.8	1,473.2	19,769.9	1,286.9	1,225.4	-103.7	22,178.5
Q4	363.4	3,620.2	1,360.7	53.2	1,580.9	4,310.4	1,234.6	3,139.1	2,714.5	1,488.6	19,865.7	1,334.2	1,215.2	-101.0	22,314.2
2015 Q1	353.5	3,290.4	1,285.9	93.7	1,596.4	4,076.9	1,215.4	3,110.3	2,863.0	1,499.7	19,385.3	1,299.4	1,196.4	-105.4	21,775.7
Q2	374.8	3,273.0	1,346.3	48.5	1,619.8	3,966.1	1,250.2	3,151.5	2,867.1	1,506.7	19,403.9	1,303.2	1,22		

Table 4: Percentage Change in Gross Value Added by Kind of Economic Activity at constant 2006 Prices

Calendar Year	Agriculture	Mining	Manufacturing	Water & Electricity	Construction	Trade, Hotels & Restaurants	Transport & Communication	Finance & Business Service	General Government	Social & Personal Services	Value Added	Taxes on Import	Other Taxes on products	Subsidies	Total GDP
2005	-2.5	8.3	1.8	-14.1	-1.2	3.8	14.0	1.4	-1.1	18.6	4.4	11.1	-0.9	9.0	4.6
2006	13.3	5.1	20.0	3.0	15.9	27.4	13.8	4.9	-2.2	13.8	8.7	7.1	3.8	12.6	8.4
2007	12.2	-4.8	25.7	-4.9	23.2	15.2	15.4	11.2	5.6	8.2	6.5	24.3	25.6	12.8	8.3
2008	2.0	0.3	-2.6	6.6	0.8	18.0	10.2	11.7	0.2	15.2	5.5	4.1	24.7	7.8	6.2
2009	6.4	-42.4	5.0	-5.2	12.3	3.9	14.8	1.5	2.8	11.3	-9.1	-9.7	20.0	6.5	-7.7
2010	5.8	20.4	3.9	12.0	3.6	9.3	6.4	11.5	7.5	6.2	10.2	-8.1	2.1	-4.2	8.6
2011	0.2	-6.5	11.4	-34.2	23.1	13.8	6.1	7.7	6.3	8.3	6.1	9.5	2.1	-0.7	6.0
2012	-8.5	-5.8	3.7	-27.5	14.4	6.8	10.9	9.1	2.8	10.7	4.5	7.5	1.4	3.1	4.5
2013	1.3	24.2	6.5	67.5	4.1	16.0	7.6	8.7	6.0	8.0	11.8	12.8	2.7	7.3	11.3
2014	-0.4	0.5	0.5	-55.8	3.7	10.7	9.8	2.7	4.6	4.2	4.1	5.3	4.4	3.8	4.1
2015	0.3	-19.6	3.2	7.0	4.0	-3.9	4.5	4.5	3.3	3.6	-2.0	0.6	2.0	3.5	-1.7
2016	0.6	-3.5	1.6	95.2	4.2	13.4	6.6	3.3	2.4	3.5	4.8	-0.4	0.8	3.2	4.3
2017	1.9	-11.1	2.2	39.9	3.5	9.0	4.7	4.1	1.5	2.8	2.8	3.6	3.8	1.4	2.9
2018	2.6	7.6	3.4	11.3	3.7	3.6	6.4	5.0	3.4	3.6	4.5	2.9	5.8	6.1	4.5
2019	-0.1	-4.1	2.8	8.4	3.0	4.5	5.2	5.9	3.7	3.0	3.2	-0.1	3.1	5.9	3.0
2020	2.3	-26.2	-8.7	5.1	-11.0	-14.8	-7.7	-1.2	2.8	-1.9	-8.4	4.6	-10.3	5.1	-7.9
2005 Q1	20.9	14.2	-0.8	-14.0	-7.3	-2.9	6.6	0.4	-0.9	14.9	4.6	30.0	-2.2	1.7	5.5
Q2	-21.3	22.0	1.2	-10.7	0.5	-0.3	16.2	2.1	-5.7	19.8	6.9	-10.3	-2.6	8.9	5.4
Q3	7.1	0.1	6.4	-13.9	-2.8	5.2	18.5	2.5	-2.7	20.3	2.1	-10.9	85.1	12.6	3.3
Q4	-8.5	2.5	0.6	-17.2	5.8	13.4	14.8	0.7	5.0	19.6	4.5	41.3	-40.5	12.7	4.2
2006 Q1	26.5	20.4	20.6	1.7	10.3	32.0	16.1	8.7	-4.7	18.0	15.0	-2.0	-14.2	16.0	12.2
Q2	-15.9	5.6	17.0	2.5	11.1	26.7	20.2	9.0	4.5	15.5	9.7	17.6	19.0	13.1	10.4
Q3	16.1	1.2	18.4	4.0	30.5	27.2	7.7	3.7	-1.1	12.8	7.5	44.2	-14.2	11.4	8.2
Q4	35.3	-3.0	23.8	3.9	11.7	24.0	12.1	-1.2	-7.0	9.2	3.5	-17.1	49.1	10.3	3.3
2007 Q1	-2.9	-1.5	24.8	-0.2	16.9	12.9	11.4	14.1	9.8	3.9	7.3	2.3	-5.0	9.4	6.5
Q2	68.3	-3.0	40.6	0.4	25.2	18.5	17.4	12.2	5.4	7.1	9.7	33.5	32.9	12.4	11.9
Q3	8.6	-9.3	24.2	-6.8	10.1	12.3	17.7	11.8	4.8	10.5	3.8	22.4	44.6	14.1	6.3
Q4	-16.7	-4.9	14.8	-12.6	42.9	17.2	15.0	6.8	2.8	11.3	5.6	37.6	36.0	15.2	8.6
2008 Q1	-9.1	4.1	-4.1	-2.5	14.6	17.7	15.8	-3.9	-6.4	19.3	4.4	35.5	27.5	10.9	6.9
Q2	-1.7	2.9	-1.2	1.1	2.7	17.2	8.5	12.6	0.4	12.5	6.1	-2.8	20.7	8.0	6.1
Q3	-3.9	8.2	-1.5	9.1	-1.7	21.0	8.3	8.8	2.3	12.1	7.8	-3.4	27.0	6.6	7.9
Q4	38.7	-13.7	-3.7	19.9	-9.9	16.2	8.6	31.2	4.3	17.2	3.6	-3.8	23.7	6.2	4.1
2009 Q1	23.4	-57.2	15.9	-9.0	7.7	7.1	11.1	15.5	12.0	11.6	-10.7	-15.2	24.1	8.1	-9.5
Q2	-10.8	-40.5	2.0	-4.5	14.3	8.8	11.6	0.9	0.8	14.7	-8.5	-12.0	23.2	7.6	-7.3
Q3	2.9	-46.5	-4.3	-7.4	19.7	4.5	16.9	-3.6	0.3	12.7	-12.0	-9.4	16.2	6.4	-10.4
Q4	17.4	-22.0	7.6	-0.6	7.8	-4.4	19.2	-4.8	-0.5	6.4	-4.8	-2.3	17.8	4.2	-3.4
2010 Q1	-4.8	56.6	-3.9	36.9	-1.4	2.9	7.3	5.5	7.7	5.9	12.2	-2.3	8.9	-7.4	11.2
Q2	20.0	6.8	-1.5	9.1	-6.0	5.2	7.7	13.1	4.4	7.5	6.0	-10.3	8.9	-5.3	5.3
Q3	2.2	32.8	11.2	12.7	4.2	12.2	7.2	14.3	8.3	5.7	14.0	-9.3	-2.1	-3.2	11.5
Q4	6.7	-1.6	10.8	-6.2	18.3	17.3	3.9	13.2	9.8	5.8	8.7	-10.0	-5.2	-1.1	6.5
2011 Q1	-1.2	-4.0	12.9	-36.6	22.9	24.0	9.8	10.1	-0.4	4.3	7.4	-21.7	10.0	11.6	6.0
Q2	-10.3	6.6	7.2	-30.0	25.9	8.4	6.7	4.1	6.5	3.6	6.6	30.6	8.7	-11.2	8.1
Q3	-4.0	-16.1	11.2	-42.4	22.5	7.2	4.1	7.6	2.2	9.0	1.7	23.3	-13.6	3.2	1.8
Q4	19.1	-10.4	14.0	-27.1	21.4	16.4	3.9	9.0	16.3	16.5	8.8	6.7	3.8	-4.9	8.5
2012 Q1	4.4	-2.9	9.9	12.9	20.1	1.6	11.1	6.8	13.7	9.9	6.6	35.4	-8.1	-2.6	6.8
Q2	-7.7	-5.8	6.9	-41.2	21.5	9.9	13.3	9.1	-0.3	14.4	5.4	-13.4	-8.0	11.1	3.3
Q3	-9.5	-23.7	3.6	-22.7	10.0	11.9	10.0	13.4	-0.6	10.4	2.0	-1.2	23.4	2.8	2.9
Q4	-19.0	10.0	-4.5	-59.3	7.6	4.2	9.2	7.3	-0.4	8.3	4.0	20.8	2.2	2.1	4.8

Table 4 Continued : Percentage Change in Gross Value Added by Kind of Economic Activity at constant 2006 Prices

Calendar Year	Agriculture	Mining	Manufacturing	Water & Electricity	Construction	Trade, Hotels & Restaurants	Transport & Communication	Finance & Business Service	General Government	Social & Personal Services	Value Added	Taxes on Import	Other Taxes on products	Subsidies	Total GDP
2013 Q1	-5.0	5.0	-0.7	22.6	4.4	13.0	5.3	14.9	9.1	10.9	8.6	29.8	8.9	9.0	9.8
Q2	3.4	30.8	10.2	128.0	4.5	12.1	5.7	9.6	6.9	8.1	13.1	15.1	2.3	4.0	12.6
Q3	3.5	46.5	9.2	149.6	3.7	17.9	8.9	5.0	6.5	6.1	14.9	5.9	-0.4	7.2	13.4
Q4	3.7	19.9	7.7	-19.2	3.7	20.7	10.3	5.7	1.9	7.1	10.7	4.1	0.5	8.7	9.7
2014 Q1	0.3	4.7	-1.7	-61.7	2.5	14.6	9.3	-1.0	-2.7	4.0	3.4	2.7	3.3	5.4	3.3
Q2	0.0	-6.7	-1.7	-44.0	3.6	14.4	11.3	2.5	11.6	4.4	4.1	8.8	8.3	7.4	4.6
Q3	-3.2	5.7	0.2	-74.0	4.5	9.0	10.1	5.6	12.9	4.9	5.9	9.0	4.7	4.3	6.0
Q4	1.5	-0.2	5.0	11.6	4.2	5.6	8.3	3.5	-2.1	3.5	2.9	1.4	1.3	-1.4	2.7
2015 Q1	1.3	2.0	6.6	18.9	4.9	-1.5	4.1	3.3	7.3	4.5	3.1	1.0	-0.6	1.3	2.8
Q2	1.1	-8.1	5.9	-54.4	3.9	-4.5	3.6	4.3	0.5	4.1	-0.7	5.3	1.7	4.3	-0.3
Q3	-0.5	-40.5	2.1	22.3	3.4	-6.1	5.0	4.3	2.1	2.9	-6.4	2.1	3.0	3.6	-5.4
Q4	-0.7	-30.4	-1.1	94.4	3.6	-3.5	5.4	6.1	3.5	3.0	-3.8	-5.7	3.7	4.9	-3.6
2016 Q1	-1.8	-5.5	-0.4	37.1	3.4	5.5	7.1	5.1	1.6	2.9	2.3	1.1	1.5	1.8	2.2
Q2	-1.4	-13.6	1.1	231.7	4.6	20.2	5.5	3.1	2.5	3.2	4.3	-1.9	2.8	2.8	3.9
Q3	4.0	18.6	2.6	19.2	4.2	16.3	6.2	2.6	2.2	4.1	7.9	-2.6	1.2	3.6	6.9
Q4	1.6	-6.0	2.8	138.1	4.7	11.9	7.4	2.6	3.2	3.8	4.9	1.9	-2.3	4.8	4.3
2017 Q1	2.8	-28.9	0.4	7.4	4.0	18.1	4.4	4.4	0.7	3.2	1.2	-0.6	-1.5	3.3	1.0
Q2	0.9	-13.4	0.3	64.3	3.3	1.1	6.0	4.5	0.9	3.1	0.7	4.5	0.1	1.9	0.9
Q3	1.8	3.3	3.6	127.9	3.5	0.5	4.6	3.7	1.4	2.5	3.0	5.5	7.2	-0.1	3.4
Q4	2.3	0.3	4.3	9.5	3.3	17.1	3.8	3.6	3.1	2.3	6.3	5.2	9.1	0.5	6.4
2018 Q1	2.8	12.2	4.4	46.3	3.5	-1.8	6.6	4.8	2.7	3.1	3.7	7.2	10.4	2.8	4.3
Q2	2.7	7.5	3.5	-1.7	4.1	9.4	6.1	5.1	3.2	3.2	5.7	2.3	1.6	5.3	5.3
Q3	2.8	-2.6	2.3	23.1	3.9	7.3	5.9	5.1	3.6	3.9	4.3	1.0	5.2	7.8	4.1
Q4	2.2	14.0	3.4	-2.6	3.3	0.2	7.0	4.8	4.2	4.0	4.3	1.4	6.3	8.3	4.2
2019 Q1	2.5	3.2	3.2	4.3	2.7	5.8	5.6	5.3	3.4	3.8	4.4	1.6	5.8	8.5	4.3
Q2	-0.5	-8.1	3.5	0.5	3.0	5.5	5.2	6.0	4.2	3.1	3.0	2.2	5.5	6.4	3.1
Q3	-1.4	-2.4	3.0	3.0	3.2	5.3	5.1	6.4	3.6	2.5	3.6	-2.2	0.6	4.7	3.1
Q4	-1.0	-8.2	1.8	24.4	3.1	1.4	4.7	5.9	3.5	2.5	2.0	-1.9	0.8	4.1	1.7
2020 Q1	0.3	-6.2	3.6	15.0	3.2	4.5	2.5	6.2	4.1	2.8	3.1	-4.5	3.9	5.0	2.7
Q2	3.0	-60.5	-31.2	1.3	-36.0	-40.2	-17.0	-11.9	2.1	-13.3	-25.7	5.9	-25.4	5.3	-24.0
Q3	3.1	-15.2	-5.3	33.5	-7.6	-14.3	-9.0	-1.0	2.5	0.8	-6.1	9.0	-18.0	5.1	-6.0
Q4	2.8	-24.1	-1.5	-20.2	-3.3	-8.1	-6.9	1.6	2.3	2.0	-5.0	8.7	-2.1	5.0	-4.1

Table 5: Gross Domestic Product by Type of Expenditure at Current Prices (P million)

Calendar year	Government Final Consumption			Non-Profit Institutions	Household Final Consumption			Gross Fixed Capital Formation					Change in Inventories				Gross Domestic Expenditure	Exports			Imports			Errors & Omissions	Total GDP
	Central Govt	Local Govt	Total		Household Consumption (Mkt)	Household Consumption (Non-Mkt)	Total	Construction	Machinery & Equipment	Transport Equipment	Mineral Prospecting	Total	Livestock	Minerals	Others	Total		Goods	Services	Total	Goods	Services	Total		
2004	7,311.3	1,319.8	8,631.1	796.4	13,795.9	2,132.5	16,724.8	6,937.7	3,531.7	1,019.8	214.4	11,703.7	87.8	1,986.6	930.2	3,004.6	40,064.1	17,344.6	3,511.3	20,855.9	13,475.6	3,920.8	17,396.4	-1,487.0	42,036.6
2005	8,361.6	1,484.7	9,846.3	1,013.0	16,096.4	2,230.5	19,340.0	8,035.7	3,624.8	950.4	249.7	12,860.5	74.1	32.9	829.2	936.3	42,983.0	22,708.3	4,151.5	26,859.8	13,729.2	4,329.3	18,058.5	-1,032.1	50,752.2
2006	8,502.4	1,568.1	10,070.5	1,217.0	19,222.9	2,452.8	22,892.7	9,930.8	4,095.6	1,159.8	300.5	15,486.6	160.7	391.2	828.2	1,380.1	49,830.0	26,386.1	4,499.9	30,886.0	15,283.9	4,859.8	20,143.7	-1,465.4	59,106.9
2007	9,989.2	1,826.2	11,815.4	1,335.0	22,220.5	3,066.7	26,622.2	11,421.2	5,515.0	1,768.0	357.2	19,061.5	217.9	-775.7	1,357.0	799.2	58,298.3	31,692.0	4,917.0	36,609.0	21,228.0	6,028.3	27,256.3	-498.3	67,152.7
2008	12,936.1	2,270.6	15,206.6	1,147.1	27,967.0	3,815.0	32,929.1	12,052.9	8,122.2	2,430.4	246.1	22,851.6	184.0	6,185.2	1,922.6	8,291.8	79,279.1	32,757.0	1,371.0	34,128.0	35,330.0	2,809.0	38,139.0	-547.2	74,720.9
2009	12,971.2	2,521.7	15,492.9	1,217.0	32,077.5	3,929.1	37,223.5	14,587.8	8,077.9	2,665.8	313.9	25,645.5	191.8	-5,402.1	2,214.8	-2,995.5	75,366.4	23,866.0	1,699.6	25,565.6	33,346.0	4,770.0	38,116.0	10,646.4	73,462.4
2010	14,363.6	2,798.3	17,162.0	1,335.0	37,195.1	4,161.9	42,692.1	16,852.9	9,484.8	2,510.7	353.2	29,201.5	253.8	1,491.1	2,109.3	3,854.2	92,909.7	31,237.0	6,668.0	37,905.0	38,035.0	6,497.0	44,532.0	584.7	86,867.4
2011	16,592.9	2,814.4	19,407.3	1,464.6	42,755.9	4,408.6	48,629.1	19,364.4	10,907.5	2,962.6	406.1	33,640.6	1.3	1,576.1	2,001.1	3,578.5	105,255.5	44,043.0	8,395.0	52,438.0	48,821.0	7,443.0	56,264.0	3,550.4	104,979.9
2012	18,342.9	2,852.7	21,195.6	1,995.2	50,789.5	4,315.5	57,100.3	23,308.9	12,601.9	3,437.1	455.5	39,803.5	187.6	-610.1	2,460.8	2,038.3	120,137.6	45,886.0	8,226.0	54,112.0	61,074.0	6,391.0	67,465.0	3,085.8	109,870.4
2013	20,005.4	3,209.3	23,214.7	2,154.9	57,512.1	5,442.5	65,109.5	26,629.9	12,316.1	2,408.1	571.0	41,925.1	-261.6	-4,752.3	-103.3	-511.2	125,132.2	66,563.7	10,437.0	77,000.7	68,902.2	7,483.1	76,385.3	-589.2	125,158.3
2014	25,343.8	3,733.9	29,077.7	2,308.3	60,279.5	5,887.0	68,474.7	28,775.8	12,346.4	2,697.1	613.3	44,432.7	165.0	-417.1	-3,047.0	-3299.1	138,686.0	76,447.6	8,837.1	85,284.7	69,794.6	11,042.8	80,837.4	2,735.3	145,868.6
2015	26,034.1	4,022.6	30,056.7	2,460.1	67,187.3	6,337.2	75,984.5	31,329.6	15,132.9	2,532.9	648.0	49,643.4	1485.7	2,825.6	-6,332.5	-2021.2	153,663.5	63,525.2	9,238.5	72,763.7	70,639.8	11,331.5	81,971.3	1,610.3	146,066.2
2016	27,313.3	3,719.5	31,032.9	2,662.5	71,124.1	6,936.8	80,723.4	34,784.0	15,116.2	2,397.1	688.5	52,985.8	69.4	-2,037.2	-4,911.4	-6879.2	157,862.9	80,370.5	9,279.7	89,650.3	64,282.2	11,109.0	75,391.2	-1,557.9	170,564.0
2017	29,328.3	3,861.8	33,190.1	2,864.8	78,819.9	7,077.9	88,762.6	37,777.4	11,945.4	1,988.2	722.4	52,433.4	1312.5	-117.3	-3,862.0	-2666.7	171,719.3	61,707.8	9,739.1	71,446.9	53,296.3	11,418.3	64,714.6	1,651.0	180,102.6
2018	30,423.7	4,229.6	34,653.3	3,036.7	83,707.8	7,368.7	94,113.2	41,366.3	13,022.0	2,399.6	761.7	57,549.6	-1279.2	468.1	-709.0	-1520.1	184,796.0	67,223.1	9,565.9	76,789.0	62,262.0	12,304.2	74,566.2	3,346.5	190,365.3
2019	33,666.7	4,523.9	38,190.5	3,207.4	89,545.1	7,600.8	100,353.2	44,219.1	14,458.3	2,789.6	785.6	62,252.6	-2154.9	922.3	4,664.0	3431.4	204,227.8	56,317.8	10,419.7	66,737.6	68,028.7	14,735.3	82,764.0	9,302.2	197,503.6
2020	37,580.9	5,444.5	43,025.5	3,199.8	83,435.5	7,622.3	94,257.7	40,488.6	13,675.3	2,637.3	789.9	57,591.1	-2234.0	-293.6	9,600.0	7072.4	201,946.6	48,241.6	5,390.1	53,631.7	71,405.7	12,426.2	83,831.9	9,052.3	180,798.7
2004 Q1	1,845.5	354.9	2,200.4	181.5	3,317.9	466.8	3,966.2	1,640.7	785.6	286.9	51.0	2,764.2	21.3	418.6	359.0	798.8	9,729.7	4,182.0	1,046.3	5,228.3	2,846.0	1,095.1	3,941.1	-763.6	10,253.3
Q2	1,753.4	316.7	2,070.1	192.8	3,394.3	433.5	4,020.6	1,686.8	957.3	243.1	52.4	2,939.6	39.0	-1196.3	349.9	-807.4	8,222.9	3,625.7	595.8	4,221.5	3,411.2	886.8	4,298.0	926.8	9,073.2
Q3	1,883.2	314.1	2,197.3	204.7	3,369.4	647.1	4,221.2	1,780.3	866.1	259.1	55.0	2,960.5	16.9	1547.6	116.8	1681.3	11,060.4	4,946.5	677.0	5,623.5	3,481.0	1,051.5	4,532.5	-674.6	11,476.8
Q4	1,829.1	334.2	2,163.3	217.4	3,714.3	585.0	4,516.7	1,829.9	922.6	230.8	56.0	3,039.3	10.7	1216.6	104.6	1331.8	11,051.2	4,590.4	1,192.2	5,782.6	3,737.4	887.3	4,624.7	-975.6	11,233.4
2005 Q1	2,298.6	406.0	2,704.6	230.9	3,992.9	458.6	4,682.4	1,879.0	899.1	357.2	53.4	3,188.8	12.2	-592.4	218.5	-361.6	10,214.2	5,538.7	1,168.1	6,706.8	3,363.9	1,239.0	4,602.9	25.0	12,343.1
Q2	1,802.4	318.2	2,120.6	245.2	3,694.1	571.8	4,511.1	1,931.6	830.2	185.4	50.9	2,998.2	15.7	-146.0	184.2	53.9	9,683.7	4,871.5	536.7	5,408.2	3,251.0	994.0	4,245.0	279.7	11,126.7
Q3	1,973.4	353.2	2,326.6	260.4	4,085.9	603.9	4,950.1	2,083.3	935.0	207.4	68.0	3,293.7	30.7	619.1	189.2	839.0	11,409.4	7,020.6	961.4	7,982.0	3,289.8	1,034.3	4,324.2	-879.6	14,187.7
Q4	2,287.2	407.3	2,694.5	276.5	4,323.5	596.3	5,196.4	2,141.7	960.5	200.3	77.3	3,379.8	15.5	152.2	237.2	405.0	11,675.6	5,277.5	1,485.3	6,762.8	3,824.5	1,062.0	4,886.4	-457.3	13,094.7
2006 Q1	1,970.0	374.1	2,344.2	293.7	4,531.2	412.8	5,237.6	2,394.5	828.8	270.9	66.6	3,560.8	31.6	257.4	199.0	488.0	11,630.6	6,028.7	1,269.1	7,297.8	3,158.9	1,298.3	4,457.2	-469.2	14,002.0
Q2	1,963.6	375.1	2,338.8	299.0	4,323.7	703.5	5,326.1	2,461.6	964.0	262.0	65.6	3,753.2	25.8	-1081.5	185.3	-870.3	10,547.8	6,090.1	649.3	6,739.4	3,925.3	1,080.4	5,005.8	928.4	13,209.9
Q3	2,202.5	402.2	2,604.8	316.9	5,246.7	630.4	6,194.0	2,569.3	1,106.0	293.0	84.6	4,052.9	59.3	1623.9	248.6	1931.8	14,783.5	6,214.5	924.3	7,138.8	4,023.7	1,345.3	5,369.0	-337.5	16,215.7
Q4	2,366.2	416.6	2,782.9	307.4	5,121.3	706.2	6,134.9	2,505.4	1,196.8	333.9	83.7	4,119.7	44.0	-408.6	195.3	-169.3	12,868.1	8,052.8	1,657.2	9,710.0	4,175.9	1,135.8	5,311.7	-1,587.1	15,679.3
2007 Q1	2,494.9	435.4	2,930.4	304.3	4,680.0	733.3	5,717.7	2,661.9	1,074.2	380.3	82.5	4,198.8	49.9	-474.7	185.3	-239.5	12,607.4	8,956.0	1,397.0	10,353.0	4,192.0	1,697.0	5,889.0	-1,337.5	15,733.9
Q2	2,367.2	437.2	2,804.4	312.7	5,186.7	728.0	6,227.4	2,769.6	1,285.8	488.6	84.9	4,628.8	69.9	-360.6	189.6	-101.1	13,559.6	7,693.0	649.0	8,342.0	5,160.0	1,197.0	6,357.0	229.8	15,774.4
Q3	2,549.9	475.9	3,025.9	359.6	5,997.3	731.7	7,088.6	2,939.9	1,644.1	492.0	95.6	5,171.7	62.1	1418.7	478.3	1959.1	17,245.2	8,923.0	1,369.0	10,292.0	5,395.0	1,549.3	6,944.3	-2,078.7	18,514.2
Q4	2,577.2	477.6	3,054.7	358.5	6,356.5	873.5	7,588.6	3,049.8	1,510.9	407.1	94.3	5,062.1	36.0	-1359.1	503.8	-819.2	14,886.1	6,120.0	1,502.0	7,622.0	6,481.0	1,585.0	8,066.0	2,688.0	17,130.1
2008 Q1	3,253.2	546.6	3,799.7	334.9	5,704.2	803.7	6,842.8	2,831.3	1,990.9	526.2	68.1	5,416.4	36.0	1233.5	559.5	1829.0	17,888.0	9,018.0	367.0	9,385.0	7,505.0	650.0	8,155.0	-1,633.4	17,484.6
Q2	3,087.6	558.5	3,646.0	379.8	6,463.1	966.4	7,809.3	2,913.9	1,956.4	621.5	56.1	5,547.9	43.0	-277.0	521.0	287.1	17,290.4	8,259.0	357.0	8,616.0	8,835.0	676.0	9,511.0	891.6	17,286.9
Q3	3,088.1	559.3	3,647.4	209.7	8,073.8	975.2	9,258.7	3,174.0	1,884.8	590.7	64.4	5,713.9	49.3	323.1	402.7	775.1	19,395.1	10,776.0	265.0	11,041.0	9,677.0	651.0	10,328.0	40.8	20,148.9
Q4	3,507.2	606.2	4,113.5	222.7	7,725.8	1,069.8	9,018.3	3,133.7	2,290.0	692.0	57.6	6,173.4	55.7	4905.5	439.3	5400.5	24,705.7	4,704.0	382.0	5,086.0	9,313.0	832.0	10,145.0	153.8	19,800.4
2009 Q1	3,235.4	620.2	3,855.6	307.8	7,103.8	904.6	8,316.1	3,311.1	1,865.6	802.8	62.4	6,041.9	51.4	-3994.9	679.4	-3264.1	14,949.4	3,886.0	317.6	4,203.6	7,736.0	1,096.0	8,832.0	6,274.9	16,596.0
Q2	3,443.0	653.7	4,096.7	296.0	6,924.3	1,162.2	8,382.4	3,723.9	2,106.8	568.1	79.2	6,478.1</													

Table 5 Continued: Gross Domestic Product by Type of Expenditure at Current Prices (P million)

Calendar year	Government Final Consumption			Non-Profit Institutions	Household Final Consumption			Gross Fixed Capital Formation					Change in Inventories				Gross Domestic Expenditure	Exports			Imports			Errors & Omissions	Total GDP
	Central Govt	Local Govt	Total		Household Consumption (Mkt)	Household Consumption (Non-Mkt)	Total	Construction	Machinery & Equipment	Transport Equipment	Mineral Prospecting	Total	Livestock	Minerals	Others	Total		Goods	Services	Total	Goods	Services	Total		
2012 Q1	4,371.3	707.4	5,078.8	479.9	9,325.5	1,116.2	10,921.7	5,712.3	3,053.4	836.4	118.8	9,720.9	45.4	-557.0	637.8	126.3	25,847.7	9,783.0	1,975.0	11,758.0	12,823.0	1,521.0	14,344.0	2,782.4	26,044.1
Q2	4,931.2	711.3	5,642.5	489.3	13,148.6	1,048.1	14,686.0	5,372.4	3,251.4	961.2	93.9	9,678.8	50.2	-30.5	578.1	597.8	30,605.2	10,414.0	2,014.0	12,428.0	12,903.0	1,648.0	14,551.0	-756.1	27,726.0
Q3	4,470.0	710.5	5,180.5	519.9	13,589.5	1,002.9	15,112.3	5,906.6	3,146.8	832.8	119.7	10,005.9	60.9	160.2	641.4	862.5	31,161.2	13,556.0	1,961.0	15,517.0	19,499.0	1,925.0	21,424.0	2,287.6	27,541.9
Q4	4,570.3	723.5	5,293.8	506.1	14,725.9	1,148.3	16,380.3	6,317.7	3,150.3	806.8	123.1	10,397.8	31.1	-182.9	603.4	451.6	32,523.6	12,133.0	2,276.0	14,409.0	15,849.0	1,297.0	17,146.0	-1,228.1	28,558.5
2013 Q1	4,838.5	750.8	5,589.3	518.3	13,874.7	1,218.7	15,611.7	6,497.2	2,509.3	586.0	140.5	9,733.1	-139.3	-4500.8	718.1	-3922.0	27,012.0	16,867.8	2,151.0	19,018.8	15,728.2	1,834.2	17,562.4	-43.6	28,424.8
Q2	4,954.6	775.4	5,730.0	535.7	13,617.2	1,541.2	15,694.0	6,637.0	3,293.9	716.9	142.1	10,789.9	-69.1	-304.8	1374.8	1000.9	33,214.7	14,739.4	2,675.0	17,414.4	17,067.0	2,010.0	19,077.0	908.8	32,461.0
Q3	5,071.0	807.3	5,878.3	545.5	14,503.8	1,330.7	16,379.9	6,650.2	3,176.6	480.2	143.5	10,450.4	-30.3	-197.2	-2420.8	-2648.3	30,060.3	19,550.4	2,792.0	22,342.4	17,130.8	1,996.3	19,127.2	-1,610.1	31,665.4
Q4	5,141.4	875.8	6,017.2	555.5	15,516.5	1,351.9	17,423.9	6,845.6	3,336.2	625.0	144.9	10,951.8	-22.9	250.5	224.6	452.2	34,845.1	15,406.1	2,819.0	18,225.1	18,976.1	1,642.6	20,618.8	155.7	32,607.2
2014 Q1	6,001.1	891.3	6,892.4	565.3	14,172.0	1,363.5	16,100.8	6,994.6	3,189.6	626.6	149.2	10,960.1	-46.8	-120.9	70.0	-97.6	33,855.6	17,273.7	2,121.8	19,395.5	17,513.1	2,763.4	20,276.5	1,539.8	34,514.5
Q2	6,406.1	929.8	7,335.9	573.2	14,364.8	1,488.1	16,426.1	7,220.8	2,977.9	720.1	151.8	11,070.7	-21.2	-295.5	-498.4	-815.1	34,017.7	21,037.3	2,085.9	23,123.2	17,907.1	2,650.7	20,557.7	1,142.8	37,725.9
Q3	6,495.9	956.7	7,452.5	580.8	15,515.3	1,524.7	17,620.8	7,250.6	2,392.8	686.7	153.6	10,483.7	54.1	189.0	-1609.3	-1366.2	34,190.7	19,808.3	2,273.8	22,082.2	17,245.3	2,654.0	19,899.2	-218.0	36,155.7
Q4	6,440.7	956.2	7,396.9	589.0	16,227.4	1,510.6	18,327.0	7,309.8	3,786.1	663.7	158.6	11,918.2	179.0	-189.8	-1009.3	-1020.1	36,622.0	18,328.2	2,355.6	20,683.7	17,129.2	2,974.7	20,103.9	270.7	37,472.5
2015 Q1	6,336.7	981.8	7,318.5	596.6	15,729.1	1,540.9	17,866.5	7,547.4	3,267.7	578.3	163.6	11,557.0	353.4	89.3	-1392.8	-950.1	35,792.0	19,496.6	1,930.8	21,427.4	17,666.8	2,860.3	20,527.1	-129.3	36,563.1
Q2	6,528.7	1,022.8	7,551.5	606.9	16,651.0	1,580.6	18,838.5	7,847.5	3,884.8	638.1	154.9	12,525.2	430.4	207.8	-2400.0	-1761.8	37,153.4	19,807.9	2,396.3	22,204.2	19,117.4	2,824.2	21,941.6	-72.6	37,343.4
Q3	6,498.7	1,021.2	7,519.9	620.8	16,909.7	1,586.3	19,116.8	7,889.4	4,155.2	637.6	161.3	12,843.5	409.9	782.1	460.3	1652.3	41,132.5	11,843.1	2,512.2	14,355.3	17,452.7	2,572.1	20,024.8	1,832.7	37,295.7
Q4	6,670.0	996.8	7,666.8	635.8	17,897.5	1,629.5	20,162.7	8,045.3	3,825.2	679.0	168.2	12,717.6	291.9	1746.4	-3000.0	-961.7	39,585.5	12,377.6	2,399.2	14,776.8	16,402.9	3,074.9	19,477.8	-20.5	34,864.0
2016 Q1	6,786.6	977.4	7,764.0	646.1	16,820.5	1,722.6	19,189.2	8,315.7	3,201.5	503.6	173.4	12,194.2	76.5	-715.9	-1600.0	-2239.4	36,908.1	19,894.5	2,520.5	22,415.1	15,793.3	2,216.5	18,009.8	-1,672.0	39,641.3
Q2	7,002.6	932.0	7,934.6	657.6	17,058.4	1,760.1	19,476.0	8,598.4	3,884.7	598.5	165.7	13,247.3	-33.4	-178.2	-2100.0	-2311.6	38,346.3	25,397.5	2,202.7	27,600.1	16,529.3	4,765.1	21,294.4	-1,971.7	42,680.4
Q3	6,697.4	909.3	7,606.7	671.5	18,313.3	1,781.8	20,766.7	8,899.4	3,850.1	725.8	171.2	13,646.5	-37.6	-1189.3	-1114.3	-2341.2	39,678.6	18,919.0	1,829.5	20,748.5	15,373.8	1,907.3	17,281.1	1,251.8	44,397.8
Q4	6,826.8	900.8	7,727.6	687.2	18,931.9	1,672.3	21,291.4	8,970.6	4,179.8	569.3	178.2	13,897.8	63.8	46.2	-97.0	13.0	42,929.9	16,159.6	2,727.0	18,886.6	16,585.9	2,220.0	18,805.8	834.0	43,844.7
2017 Q1	7,007.1	924.9	7,932.0	695.1	19,894.5	1,689.1	22,278.6	8,979.5	2,968.1	431.6	182.0	12,561.1	273.6	-158.0	-2800.0	-2684.4	40,087.3	17,991.9	2,169.6	20,161.5	12,350.3	2,191.9	14,542.2	-2,046.4	43,660.2
Q2	7,466.7	976.2	8,442.8	710.6	19,418.5	1,759.2	21,888.3	9,248.9	2,441.7	420.6	174.7	12,286.0	406.7	327.9	-512.0	222.5	42,839.7	14,940.9	2,452.2	17,393.1	12,109.8	3,023.8	15,133.6	-770.6	44,328.6
Q3	7,321.8	974.2	8,296.0	725.9	19,663.9	1,817.2	22,206.9	9,711.4	3,072.4	548.8	179.7	13,512.3	392.9	-363.9	-100.0	-71.1	43,944.2	13,218.6	2,700.4	15,919.0	13,065.4	3,406.5	16,471.9	2,485.7	45,877.0
Q4	7,532.7	986.5	8,519.2	733.2	19,843.0	1,812.5	22,388.7	9,837.6	3,463.2	587.2	186.0	14,074.0	239.4	76.8	-450.0	-133.8	44,848.2	15,556.3	2,416.9	17,973.2	15,770.7	2,796.1	18,566.9	1,982.2	46,236.8
2018 Q1	7,434.5	990.7	8,425.2	740.7	20,342.2	1,813.9	22,896.9	9,877.0	3,305.7	583.2	191.1	13,957.0	-54.7	28.1	550.0	523.4	45,802.4	13,808.1	1,965.1	15,773.1	14,250.9	2,655.7	16,906.6	1,224.2	45,893.1
Q2	7,570.8	1,014.2	8,584.9	750.4	20,270.0	1,857.0	22,877.4	10,222.7	3,086.7	576.3	186.2	14,071.8	-280.1	855.2	-3517.0	-2941.9	42,592.3	18,882.5	2,421.2	21,303.7	14,649.8	3,295.8	17,945.6	1,047.6	46,998.0
Q3	7,745.7	1,096.9	8,842.6	766.7	21,015.4	1,885.1	23,667.2	10,580.4	3,181.7	595.9	188.5	14,546.5	-434.3	-632.6	1539.0	472.1	47,528.4	14,850.3	2,918.9	17,769.2	14,377.4	3,546.5	17,923.9	1,462.0	48,835.6
Q4	7,672.8	1,127.8	8,800.6	778.9	22,080.1	1,812.7	24,671.7	10,686.2	3,447.9	644.2	195.9	14,974.3	-510.1	217.4	719.0	426.3	48,873.0	19,682.2	2,260.8	21,943.0	18,984.1	2,806.2	21,790.2	-387.1	48,638.5
2019 Q1	7,871.6	1,090.3	8,961.9	786.7	22,076.3	1,848.2	24,711.2	10,729.0	3,253.8	732.2	200.6	14,915.6	-514.5	-64.3	-156.0	-734.8	47,853.9	14,684.5	2,673.2	17,357.8	16,150.1	2,693.2	18,843.3	2,678.9	49,047.3
Q2	8,443.6	1,106.5	9,550.1	796.5	22,095.1	1,905.9	24,797.5	10,943.6	3,598.9	729.8	191.9	15,464.2	-518.9	22.1	-480.0	-976.8	48,835.1	17,511.0	3,072.8	20,583.8	17,056.7	3,536.8	20,593.5	411.0	49,236.3
Q3	8,645.6	1,162.3	9,807.8	807.0	22,413.4	1,955.9	25,176.3	11,217.2	3,856.0	546.7	193.3	15,813.1	-571.7	-238.5	3600.0	2789.8	53,587.1	10,836.9	2,440.7	13,277.6	16,302.9	4,079.8	20,382.7	3,166.2	49,648.2
Q4	8,706.0	1,164.8	9,870.7	817.2	22,960.2	1,890.8	25,668.2	11,329.3	3,749.7	780.8	199.9	16,059.7	-549.7	1202.9	1700.0	2353.2	53,951.8	13,285.4	2,233.0	15,518.4	18,518.9	4,425.5	22,944.5	3,046.1	49,571.8
2020 Q1	9,212.1	1,304.0	10,516.2	825.5	22,415.1	1,718.9	24,959.6	11,374.7	4,109.4	681.9	204.4	16,370.3	-554.1	-507.6	2100.0	1038.3	52,884.3	13,217.1	1,468.8	14,686.0	16,696.6	3,341.9	20,038.5	3,219.9	50,751.7
Q2	9,339.8	1,367.6	10,707.5	709.9	16,588.0	1,947.3	19,245.3	7,393.5	2,380.8	520.2	172.8	10,467.2	-558.5	2436.6	3700.0	5578.1	45,998.1	4,403.0	1,239.6	5,642.7	13,184.5	2,852.3	16,036.8	1,278.2	36,882.2
Q3	9,532.9	1,420.7	10,953.5	823.5	21,185.6	1,982.8	23,992.0	10,720.6	3,328.5	532.5	202.9	14,784.5	-558.5	-1847.0	3000.0	594.5	50,324.5	13,257.3	1,233.8	14,491.1	19,296.7	3,009.0	22,305.7	2,193.0	<

Table 6: Gross Domestic Product by Type of Expenditure at Constant Prices (P million)

Calendar year	Government Final Consumption			Non-Profit Institutions	Household Final Consumption		Gross Fixed Capital Formation					Change in Inventories				Gross Domestic Expenditure	Exports			Imports			Errors & Omissions	Total GDP	
	Central Govt	Local Govt	Total		Household Consumption (Mkt)	Household Consumption (Non-Mkt)	Total	Construction	Machinery & Equipment	Transport Equipment	Mineral Prospecting	Total	Livestock	Minerals	Others		Total	Goods	Services	Total	Goods	Services			Total
2004	9,695.9	1,499.1	11,195.0	837.6	14,545.3	2,242.9	17,625.7	8,757.6	4,167.6	1,064.3	225.5	14,215.1	75.9	2,294.8	978.4	3,349.1	46,385.0	21,072.7	4,265.8	25,338.5	16,328.3	4,851.9	21,180.2	1,624.5	52,167.7
2005	8,918.5	1,568.8	10,487.3	1,022.1	16,252.3	2,250.6	19,525.0	9,190.2	4,062.8	974.9	251.9	14,479.8	80.7	-1,096.2	1,236.7	221.2	44,713.3	25,319.2	4,628.6	29,947.8	15,303.7	4,831.1	20,134.8	18.5	54,544.8
2006	8,502.4	1,568.1	10,070.5	1,217.0	19,222.9	2,452.8	22,892.7	9,930.8	4,095.6	1,159.7	300.5	15,486.5	160.7	391.2	828.2	1,380.1	49,829.9	26,386.1	4,499.9	30,886.0	15,283.9	4,859.8	20,143.7	-1,465.3	59,106.9
2007	8,798.4	1,626.7	10,425.1	1,326.2	21,952.7	3,046.3	26,325.1	10,268.9	4,901.3	1,718.7	354.9	17,243.8	125.3	-710.1	1,347.9	763.1	54,757.2	28,663.8	4,841.7	33,505.6	19,411.8	5,758.8	25,170.6	907.0	63,999.1
2008	9,193.5	1,751.4	10,944.9	1,082.0	26,187.9	3,598.5	30,868.4	9,213.3	6,121.7	2,251.6	232.2	17,818.8	157.2	3,133.0	1,813.5	5,103.7	64,735.8	27,555.5	5,119.2	32,674.7	24,666.2	4,920.2	29,586.5	172.0	67,996.1
2009	9,520.5	1,748.7	11,269.2	1,076.4	28,024.6	3,475.3	32,576.3	10,779.1	6,103.4	2,349.7	277.7	19,509.9	209.3	-3,505.9	1,561.0	-1,735.6	61,619.8	18,677.1	1,688.9	20,365.9	21,737.6	4,628.8	26,366.4	7,173.4	62,792.8
2010	9,945.7	1,744.3	11,690.0	1,110.1	30,813.3	3,460.7	35,384.1	11,711.9	7,089.7	2,205.0	293.7	21,300.2	163.4	-226.9	1,753.9	1,690.5	70,064.8	22,264.8	1,364.5	23,629.3	23,305.3	4,769.8	28,075.1	2,551.1	68,170.1
2011	10,442.4	1,830.7	12,273.1	1,166.9	33,491.6	3,512.7	38,171.2	13,136.3	7,931.9	2,496.9	323.6	23,888.6	236.2	-530.5	1,594.4	1,300.2	75,633.1	28,696.4	1,441.9	30,138.2	27,882.9	5,589.6	33,472.5	-5.6	72,293.3
2012	12,229.8	1,912.5	14,142.3	1,127.5	33,673.4	2,853.2	37,654.1	14,140.5	9,782.2	2,908.3	310.1	27,141.0	217.5	1,010.9	1,615.9	2,844.2	81,781.7	30,069.2	5,445.9	35,515.1	40,012.4	4,197.3	44,209.7	2,427.7	75,514.8
2013	14,059.4	2,117.9	16,177.3	989.8	37,035.6	3,430.1	41,455.5	15,747.1	9,491.1	2,063.6	387.2	27,689.0	-106.5	-2,742.7	1,355.6	-1,493.7	83,828.1	42,371.0	6,569.7	48,940.7	43,735.9	4,901.0	48,636.8	-51.3	84,080.7
2014	15,751.2	2,171.4	17,922.7	1,029.1	37,260.6	3,518.0	41,807.7	16,364.1	9,145.1	2,193.5	393.7	28,096.4	-77.6	-569.8	-1,753.9	-2,401.3	85,425.5	45,490.6	5,279.7	50,770.3	42,723.9	7,616.9	50,340.8	1,714.4	87,569.5
2015	16,095.2	2,275.0	18,370.2	1,061.8	38,840.3	3,581.9	43,484.0	16,920.6	11,178.0	2,059.7	398.1	30,556.4	484.7	2,621.5	-2,116.7	989.5	93,400.1	36,269.7	5,215.8	41,485.4	43,627.2	8,134.8	51,762.1	2,959.1	86,082.6
2016	16,363.5	2,428.7	18,792.2	1,095.2	39,685.3	3,676.7	44,457.1	17,626.2	11,661.6	1,971.7	410.2	31,669.7	-10.5	-2,461.0	655.7	-1,815.7	93,103.3	42,010.9	4,900.8	46,911.7	40,392.6	8,588.8	48,981.4	-1,246.1	89,787.4
2017	16,572.1	2,510.0	19,082.1	1,128.8	42,637.9	3,604.6	47,371.4	18,332.4	8,608.9	1,515.7	417.0	28,873.9	492.7	71.9	-3,340.0	-2,775.4	92,552.0	34,350.0	4,958.4	39,308.4	30,277.0	8,379.6	38,656.6	-808.9	92,394.9
2018	17,210.7	2,573.1	19,783.8	1,170.9	44,468.7	3,667.3	49,306.9	18,979.6	10,008.5	1,802.7	428.8	31,219.6	-505.5	209.1	-2,672.0	-2,968.3	97,342.0	37,379.3	4,761.3	42,140.6	34,126.7	9,107.0	43,233.7	284.2	96,533.1
2019	17,815.4	2,626.1	20,441.5	1,207.4	46,483.9	3,699.1	51,390.4	19,726.8	11,020.4	2,084.9	435.2	33,267.2	-844.6	392.0	1,973.0	1,520.5	106,619.6	30,281.0	5,070.4	35,351.4	36,967.3	11,310.1	48,277.4	4,084.4	99,454.0
2020	18,601.0	2,716.8	21,317.8	1,191.4	46,658.8	3,664.1	51,514.3	17,556.0	10,590.7	1,958.3	430.1	30,535.1	-875.6	-317.6	6,512.0	5,318.8	108,686.0	25,195.0	2,587.5	27,782.5	40,204.3	10,171.0	50,375.3	4,543.0	91,604.1
2004 Q1	2,469.8	420.1	2,889.9	197.2	3,606.9	507.5	4,311.6	2,198.2	957.4	308.4	57.4	3,521.4	19.5	-1,015.6	353.8	-642.4	10,080.6	5,246.3	1,311.1	6,557.4	3,969.3	1,550.0	5,519.3	1,055.3	12,174.0
Q2	2,282.8	356.3	2,639.2	203.1	3,584.2	457.1	4,244.4	2,204.1	1,131.4	253.5	55.9	3,644.8	32.9	1,785.1	361.8	2,179.8	12,708.1	4,411.1	724.1	5,135.2	3,890.3	1,018.4	4,908.7	-581.5	12,353.1
Q3	2,487.8	348.3	2,836.0	213.4	3,520.7	675.3	4,409.5	2,271.6	1,013.1	267.3	56.4	3,608.4	14.7	-990.3	132.7	-842.9	10,011.0	5,956.2	814.3	6,770.5	4,219.0	1,275.6	5,494.6	2,439.5	13,726.4
Q4	2,455.5	374.4	2,829.9	223.9	3,833.4	602.9	4,660.2	2,083.7	1,065.8	235.2	55.8	3,440.5	8.9	2,515.6	130.1	2,654.6	13,585.2	5,459.1	1,416.3	6,875.4	4,249.7	1,007.9	5,257.6	-1,288.9	13,914.2
2005 Q1	2,637.3	455.2	3,092.5	245.7	4,241.5	488.6	4,975.8	2,240.6	1,061.0	382.2	59.4	3,743.3	13.9	-3,159.3	291.6	-2,853.9	8,957.7	6,506.6	1,376.9	7,883.4	3,850.1	1,411.9	5,262.0	1,260.4	12,839.5
Q2	1,907.2	340.8	2,247.9	251.6	3,787.2	587.3	4,626.2	2,264.6	944.5	191.3	59.6	3,460.1	17.1	1,837.6	327.2	2,181.9	12,516.1	5,517.6	609.9	6,127.5	3,784.4	1,150.6	4,935.1	-688.7	13,019.9
Q3	2,105.1	363.0	2,468.1	257.9	4,047.0	598.6	4,903.5	2,318.4	1,027.5	206.7	68.7	3,621.3	33.3	-1,946.1	291.3	-1,621.6	9,371.4	7,673.6	1,054.4	8,728.0	3,857.9	1,217.0	5,074.8	1,160.3	14,184.8
Q4	2,268.9	409.8	2,678.8	266.9	4,176.5	576.1	5,019.5	2,366.6	1,029.8	194.7	64.1	3,655.2	16.4	2,171.7	326.7	2,514.8	13,868.2	5,621.4	1,587.4	7,208.8	3,811.3	1,051.6	4,862.9	-1,713.5	14,500.6
2006 Q1	2,173.8	397.2	2,571.0	302.8	4,669.8	426.7	5,399.3	2,591.2	814.0	279.5	73.3	3,758.0	33.8	794.8	199.1	1,027.7	12,755.9	6,222.0	1,309.2	7,531.2	3,344.2	1,361.2	4,705.4	-1,176.3	14,405.4
Q2	2,013.9	385.2	2,399.1	300.2	4,344.4	708.4	5,353.0	2,566.2	922.3	263.3	70.6	3,822.4	26.4	-196.4	203.9	34.0	11,608.5	6,123.0	652.5	6,775.5	3,713.0	1,018.9	4,731.9	720.2	14,372.3
Q3	2,130.6	387.3	2,517.9	312.5	5,179.1	623.3	6,114.8	2,611.3	1,140.3	289.2	77.4	4,118.1	59.7	136.3	229.3	425.3	13,176.1	6,134.3	911.9	7,046.2	4,059.6	1,357.0	5,416.6	547.4	15,353.1
Q4	2,184.1	398.4	2,582.5	301.5	5,029.6	694.5	6,025.6	2,162.1	1,219.0	327.7	79.2	3,788.0	40.7	-343.4	195.9	-106.8	12,289.3	7,906.8	1,626.4	9,533.2	4,167.1	1,122.7	5,289.8	-1,556.6	14,976.1
2007 Q1	2,275.5	401.6	2,677.0	308.7	4,843.2	749.4	5,901.3	2,272.3	1,010.9	395.2	111.8	3,790.3	33.6	-831.9	328.6	-469.7	11,898.9	8,483.5	1,336.2	9,819.7	4,022.6	1,635.4	5,657.9	-725.6	15,335.1
Q2	2,061.3	390.9	2,452.2	308.8	5,232.4	724.4	6,265.6	2,507.7	1,246.2	494.4	72.9	4,321.2	40.5	1,407.2	352.7	1,800.4	14,839.4	6,696.6	604.2	7,300.8	4,727.3	1,154.7	5,882.0	-170.3	16,088.0
Q3	2,249.6	419.4	2,669.0	354.8	5,794.4	720.7	6,869.9	2,883.9	1,278.1	391.1	86.4	4,639.4	34.2	-1,664.2	346.9	-1,283.1	12,895.3	8,417.3	1,262.2	9,679.5	4,885.1	1,471.4	6,356.5	99.3	16,317.6
Q4	2,212.0	414.9	2,626.9	353.8	6,082.7	851.7	7,288.3	2,605.0	1,366.1	438.0	83.7	4,492.9	17.0	378.8	319.6	715.4	15,123.6	5,066.4	1,639.1	6,705.5	5,776.9	1,497.4	7,274.3	1,703.6	16,258.4
2008 Q1	2,478.5	417.8	2,896.3	308.5	5,905.1	840.4	7,054.0	2,194.6	1,483.9	500.6	46.9	4,226.0	33.8	88.2	1,419.6	1,541.6	15,717.9	8,262.0	1,565.7	9,827.7	5,776.8	1,464.1	7,240.9	-1,906.8	16,397.8
Q2	2,076.3	418.9	2,495.2	250.7	6,098.8	916.9	7,266.4	2,385.1	1,528.2	577.6	59.0	4,549.8	34.8	1,265.6	-214.0	1,086.4	15,397.8	6,932.1	1,074.4	8,006.5	6,272.6	1,133.1	7,405.7	1,066.8	17,065.3
Q3	2,263.8	448.7	2,712.5	256.9	7,286.9	882.9	8,426.7	2,289.2	1,528.2	543.3	67.0	4,427.7	27.2	-1,355.5	258.8	-1,069.5	14,497.4	8,634.0	1,370.8	10,004.8	6,473.4	1,103.5	7,576.9	682.4	17,607.6
Q4	2,375.1	465.9	2,841.0	265.9	6,897.0	958.3	8,121.3	2,344.4	1,581.5	630.1	59.4	4,615.4	61.4	3,134.7	349.0	3,545.2	19,122.8	3,727.4	1,108.4	4,835.8	6,143.4	1,219.6	7,363.0	329.6	16,925.3
2009 Q1	2,648.1	460.7	3,108.8	267.8	6,591.8	814.8	7,674.5	2,600.7	1,403.8	718.2	56.1	4,778.8	42.6	-2,812.1	388.7	-2,380.8	13,181.2	3,519.0	350.2	3,869.2	5,274.9	1,133.6	6,408.5	4,201.8	14,843.7
Q2	2,231.3	420.5	2,651.8	265.6	6,033.6	1,037.4	7,336.6	2,890.8	1,617.7	503.2	70.5	5,082.2	51.8	-705.9	393.										

Table 6 Continued: Gross Domestic Product by Type of Expenditure at Constant Prices (P million)

Calendar year	Government Final Consumption			Non-Profit Institutions	Household Final Consumption			Gross Fixed Capital Formation					Change in Inventories				Gross Domestic Expenditure	Exports			Imports			Errors & Omissions	Total GDP
	Central Govt	Local Govt	Total		Household Consumption (Mkt)	Household Consumption (Non-Mkt)	Total	Construction	Machinery & Equipment	Transport Equipment	Mineral Prospecting	Total	Livestock	Minerals	Others	Total		Goods	Services	Total	Goods	Services	Total		
2012 Q1	2,904.7	443.3	3,348.0	303.2	6,879.5	753.1	7,935.9	3,597.6	2,187.9	719.0	80.5	6,585.0	60.1	377.0	430.4	867.4	18,736.3	6,601.2	1,332.7	7,933.9	8,652.5	1,026.3	9,678.8	1,694.2	18,685.5
Q2	2,311.6	465.1	2,776.7	324.8	8,661.6	711.0	9,697.4	3,310.9	2,438.4	751.9	64.2	6,565.4	64.1	-406.6	381.1	38.6	19,078.0	6,864.9	1,327.6	8,192.5	8,505.6	1,086.4	9,592.0	903.9	18,582.4
Q3	3,071.8	493.5	3,565.3	259.8	8,850.7	653.0	9,763.5	3,589.8	2,590.6	730.1	90.2	7,000.7	59.9	136.0	417.6	613.5	20,943.1	8,825.5	1,326.7	10,152.2	12,694.7	1,253.3	13,947.9	1,292.9	18,440.3
Q4	3,941.7	510.6	4,452.3	239.6	9,281.6	736.1	10,257.3	3,642.2	2,565.3	707.3	75.2	6,990.0	33.5	904.4	386.8	1,324.7	23,024.3	7,777.6	1,459.0	9,236.5	10,159.6	831.4	10,991.0	-1,463.3	19,806.6
2013 Q1	3,687.4	524.5	4,211.8	244.1	9,698.6	780.0	10,722.7	3,875.9	1,987.5	507.6	95.7	6,466.6	-47.9	-2,461.4	364.2	-2,145.1	19,256.0	11,238.2	1,376.5	12,614.7	9,985.5	1,164.5	11,150.0	-212.8	20,508.0
Q2	3,313.6	526.4	3,840.0	245.2	9,057.5	980.4	10,283.1	3,919.5	2,564.7	615.6	96.6	7,196.3	-22.9	-798.9	924.9	103.1	21,422.5	9,410.3	1,701.4	11,111.7	10,874.3	1,303.6	12,178.0	575.6	20,931.9
Q3	3,219.5	530.3	3,749.9	248.5	8,869.7	841.3	9,959.5	3,960.7	2,436.4	411.2	97.1	6,905.4	-14.1	23.2	-504.8	-495.7	20,119.1	11,960.5	1,764.9	13,725.4	10,927.0	1,326.4	12,253.4	-673.9	20,917.2
Q4	3,838.9	536.7	4,375.5	252.0	9,409.8	828.4	10,490.2	3,991.0	2,502.6	529.3	97.8	7,120.7	-21.6	494.4	571.3	1,044.1	23,030.4	9,761.9	1,727.0	11,488.9	11,949.0	1,106.5	13,055.5	259.8	21,723.7
2014 Q1	3,895.8	555.3	4,451.1	254.4	9,764.2	828.7	10,847.3	4,036.1	2,406.2	529.2	98.0	7,069.5	-45.4	-328.5	-137.5	-511.4	21,856.5	10,280.6	1,289.3	11,569.9	11,029.2	1,921.5	12,950.7	713.9	21,189.6
Q2	3,988.2	530.3	4,518.5	255.5	8,943.7	893.2	10,092.4	4,099.6	2,168.3	577.6	98.1	6,943.5	-44.5	-182.3	-715.8	-942.7	20,611.7	12,499.9	1,251.8	13,751.7	10,862.2	1,819.3	12,681.5	205.2	21,887.2
Q3	3,872.2	536.3	4,408.5	258.1	8,970.3	907.4	10,135.8	4,092.9	1,769.5	551.8	98.2	6,512.3	-19.0	426.0	-573.5	-166.5	20,890.1	11,939.9	1,353.0	13,292.9	10,444.6	1,825.6	12,270.2	265.7	22,178.5
Q4	3,995.2	549.5	4,544.7	261.2	9,582.4	888.7	10,732.3	4,135.5	2,801.1	534.8	99.5	7,571.0	31.2	-484.9	-327.1	-780.8	22,067.1	10,770.2	1,385.6	12,155.8	10,387.9	2,050.5	12,438.4	529.7	22,314.2
2015 Q1	3,980.6	570.3	4,550.9	262.9	9,914.7	892.8	11,070.4	4,139.6	2,403.6	462.5	102.3	7,108.0	106.0	53.8	-1,099.7	-939.9	21,789.5	11,494.4	1,118.5	12,612.9	10,771.8	1,974.7	12,746.4	119.8	21,775.7
Q2	4,044.5	559.3	4,603.9	264.0	9,368.4	901.2	10,533.6	4,231.8	2,822.9	512.6	95.4	7,662.7	142.0	102.4	-907.1	-662.6	22,137.6	11,465.1	1,366.1	12,831.3	11,540.1	1,973.4	13,513.5	366.8	21,822.2
Q3	3,953.7	569.6	4,523.3	266.4	9,747.5	890.3	10,904.3	4,273.1	3,076.9	522.9	98.4	7,971.4	139.2	101.0	753.4	993.6	24,392.6	6,468.3	1,409.8	7,878.1	10,857.7	1,866.1	12,723.8	1,423.7	20,970.6
Q4	4,116.4	575.7	4,692.0	268.5	9,809.7	897.5	10,975.7	4,276.1	2,874.5	561.7	102.0	7,814.3	97.5	2,364.2	-863.3	1,598.4	25,080.4	6,841.9	1,321.3	8,163.2	10,457.7	2,320.7	12,778.3	1,048.8	21,514.1
2016 Q1	4,062.4	599.6	4,662.0	269.4	10,170.8	927.2	11,367.3	4,321.1	2,519.7	412.6	104.6	7,358.0	16.9	-1,831.7	2,000.0	185.2	23,572.5	10,057.9	1,356.4	11,414.4	10,389.9	1,769.8	12,159.7	-569.0	22,258.1
Q2	4,114.9	598.5	4,713.4	271.7	9,330.8	933.9	10,536.4	4,435.8	3,132.0	501.6	99.0	8,168.5	-23.1	-373.3	700.0	303.5	23,721.8	13,302.7	1,168.6	14,471.2	10,591.6	3,733.5	14,325.2	-1,198.6	22,669.2
Q3	4,042.5	610.5	4,653.0	276.1	9,965.5	939.5	11,181.1	4,432.5	2,929.0	594.9	101.6	8,058.0	-22.6	-460.9	-1,655.0	-2,138.5	21,753.7	10,052.0	962.6	11,014.6	9,495.8	1,440.4	10,936.2	585.1	22,417.2
Q4	4,143.7	620.1	4,763.8	278.0	10,218.1	876.1	11,372.2	4,436.8	3,080.9	462.6	105.0	8,085.3	18.4	204.9	-389.3	-166.0	24,055.3	8,598.3	1,413.2	10,011.5	9,915.3	1,645.0	11,560.3	-63.6	22,442.9
2017 Q1	4,032.5	624.3	4,656.8	277.3	10,535.5	867.8	11,680.7	4,482.7	2,141.1	338.3	106.4	7,068.5	100.9	3.4	-2,200.0	-2,095.7	21,310.3	9,791.1	1,114.5	10,905.6	7,101.4	1,587.1	8,688.5	-1,056.3	22,471.2
Q2	4,196.6	627.0	4,823.6	281.0	10,217.5	898.8	11,397.2	4,600.4	1,745.9	324.5	101.4	6,772.0	153.2	176.5	-590.0	-260.3	22,732.6	8,339.1	1,252.7	9,591.8	6,775.9	2,198.9	8,974.8	-484.2	22,865.4
Q3	4,108.8	628.1	4,736.9	284.5	10,905.4	922.2	12,112.0	4,604.4	2,233.3	422.8	103.2	7,363.6	148.7	-244.5	-100.0	-195.8	24,016.7	7,455.9	1,370.1	8,826.0	7,519.9	2,512.8	10,032.6	371.5	23,181.7
Q4	4,234.2	630.6	4,864.8	286.1	10,979.5	915.8	12,181.4	4,644.9	2,488.7	430.1	106.1	7,669.8	89.8	136.6	-450.0	-223.6	24,492.4	8,763.9	1,221.0	9,984.9	8,879.9	2,080.8	10,960.7	360.0	23,876.6
2018 Q1	4,177.1	634.3	4,811.3	287.1	11,245.4	909.3	12,441.8	4,658.0	2,370.7	443.3	108.4	7,580.4	-23.9	22.4	-1,200.0	-1,201.5	23,632.0	8,225.3	984.8	9,210.0	7,683.5	1,883.3	9,566.8	160.6	23,435.8
Q2	4,314.8	639.4	4,954.2	290.1	10,939.4	925.3	12,154.7	4,744.8	2,413.5	433.2	104.8	7,696.3	-111.0	357.8	-2,500.0	-2,253.2	22,552.0	10,705.0	1,209.2	11,914.2	8,001.1	2,402.4	10,403.5	15.4	24,078.1
Q3	4,392.6	647.4	5,040.0	295.5	11,094.5	936.5	12,326.5	4,767.5	2,521.4	444.8	106.2	7,839.9	-170.6	-414.2	468.0	-116.8	25,089.6	7,962.5	1,449.8	9,412.3	8,016.1	2,688.4	10,704.5	336.2	24,133.5
Q4	4,326.2	652.0	4,978.2	298.3	11,189.4	896.2	12,383.9	4,809.2	2,703.0	481.5	109.3	8,103.1	-199.9	243.1	560.0	603.2	26,068.4	10,486.6	1,117.5	11,604.1	10,426.0	2,132.9	12,558.9	-228.0	24,885.6
2019 Q1	4,192.5	651.7	4,844.2	299.3	11,384.7	908.3	12,592.4	4,829.2	2,512.7	549.6	111.6	8,003.1	-201.7	-118.3	-141.0	-460.9	24,978.7	7,932.1	1,312.8	9,244.9	8,848.9	2,033.5	10,882.4	1,097.7	24,438.9
Q2	4,512.2	651.8	5,164.0	300.7	11,375.5	931.1	12,607.4	4,954.4	2,733.1	542.0	106.0	8,335.4	-203.4	38.9	-386.0	-550.5	25,556.3	9,370.7	1,497.4	10,868.1	9,236.9	2,707.3	11,944.2	338.6	24,818.8
Q3	4,572.3	653.7	5,226.0	302.0	11,448.1	948.3	12,698.4	4,961.3	2,946.6	412.7	107.4	8,428.1	-224.1	-170.3	1,700.0	1,305.7	27,658.1	5,744.9	1,183.1	6,928.0	8,879.4	3,157.8	12,037.2	1,248.5	24,886.7
Q4	4,538.4	669.0	5,207.4	305.3	12,275.6	911.3	13,492.2	4,981.9	2,828.0	580.5	110.2	8,500.6	-215.5	641.7	800.0	1,226.2	28,426.5	7,233.4	1,077.0	8,310.5	10,002.1	3,411.5	13,413.7	1,399.6	25,309.7
2020 Q1	4,482.9	668.1	5,151.1	308.1	11,972.7	828.0	13,108.8	4,964.0	3,222.1	526.8	112.0	8,825.0	-217.2	-450.7	1,200.0	532.1	27,617.0	6,707.6	707.4	7,415.0	9,422.4	2,702.9	12,125.3	1,215.9	25,090.5
Q2	4,690.2	679.0	5,369.2	264.3	10,319.1	935.9	11,519.3	3,189.6	1,921.5	406.0	94.8	5,611.9	-218.9	716.5	2,302.0	2,799.6	25,299.9	2,190.0	595.8	2,785.7	7,799.0	2,412.0	10,211.0	981.5	18,856.1
Q3	4,712.5	682.8	5,395.3	307.5	11,753.5	956.3	13,017.3	4,592.7	2,607.9	396.4	110.2	7,707.1	-218.9	315.8	1,908.0	2,004.9	28,124.7	7,015.8	591.8	7,607.6	11,022.1	2,503.2	13,525.3	1,186.0	23,393.1
Q4	4,715.3	686.9	5,402.2	311.6	12,613.5	943.9	13,869.0	4,809.7	2,839.1	629.1	113.2	8,391.1	-220.6	-899.2	1,102.0	-17.9	27,644.4	9,281.6	692.5	9,974.1	11,960.8	2,552.9	14,513.7	1,15	



Private Bag 0024, Gaborone
Tel: 3671300 **Fax:** 3952201
Toll Free: 0800 600 200

Private Bag F193,
City of Francistown Botswana
Tel. 241 5848, **Fax.** 241 7540

Private Bag 32
Ghanzi
Tel: 371 5723 **Fax:** 659 7506

Private Bag 47
Maun
Tel: 371 5716 **Fax:** 686 4327

E-mail: info@statsbots.org.bw **Website:** <http://www.statsbots.org.bw>



STATISTICS BOTSWANA