



CONSUMER PRICE INDEX

MAY 2024



Copyright 2024 © Statistics Botswana

Contact Statistician:

Rejoyce L Mbalekelwa
Tel: 3671300/3671319

Private Bag 0024, Gaborone

Tel: 3671300
Toll Free: 0800 600 200

E-mail: info@statsbots.org.bw
Website: www.statsbots.org.bw



STATISTICS BOTSWANA

Preface

This report examines Botswana's monthly inflation rate performance as measured by the Consumer Price Index (CPI). The CPI serves as an essential gauge for tracking changes in the cost of living and reflects the dynamics of price fluctuations in the economy. In this report, Statistics Botswana examines both month-on-month and year-on-year changes in the CPI to offer insights into Botswana's inflationary trends.

Accurate and timely Price Statistics play a crucial role in influencing socio-economic and monetary policies. By providing policymakers with a clear understanding of inflationary pressures, price statistics support in the formulation of effective policy interventions. Recognising the paramount importance of this data, Statistics Botswana generates the Consumer Price Index on a monthly basis, aligning with the various informational needs of stakeholders.

In May 2024, Botswana observed an annual inflation rate of 3.0 percent, recording a marginal decline of 0.1 of a percentage point from the April rate of 3.1 percent. This modest decrease underlines the stability in the country's inflationary environment during the period under review.

Statistics Botswana extends sincere appreciation to all stakeholders who contributed invaluable insights and data for the compilation of this publication.

For more information and further enquiries, contact the Directorate of Stakeholder Relations at [+267 367 1300](tel:+2673671300). This publication and all other Statistics Botswana outputs/publications are available on the website at <http://www.statsbots.org.bw> and at the Statistics Botswana Information Resource Centre (Head-Office, Gaborone)



Ms Ketso Makhumalo
Acting Statistician General
14th June 2024

Contents

| | |
|------------------------------------|----|
| Preface..... | i |
| Section 1: HEADLINE INFLATION..... | 1 |
| Section 2: CORE INFLATION..... | 2 |
| Glossary..... | 13 |

Charts

| | |
|---|---|
| Chart 1: NATIONAL RATE OF INFLATION | 2 |
| Chart 2: MONTHLY CHANGES IN THE CONSUMER PRICE INDEX..... | 2 |
| Chart 3: NON-TRADEABLES INFLATION RATE..... | 2 |
| Chart 4: TRADEABLES INFLATION RATE..... | 2 |
| Chart 5: CONTRIBUTION OF GROUPS TO ANNUAL INFLATION RATE..... | 3 |

Tables

| | |
|---|----|
| Table 1: CONTRIBUTION OF GROUPS TO ANNUAL INFLATION RATE..... | 4 |
| Table 2: CONSUMER PRICE INDEX (DECEMBER 2018 =100.0)..... | 5 |
| Table 3: NATIONAL CONSUMER PRICE GROUP & SECTION INDICES (DECEMBER 2018 = 100.0)..... | 7 |
| Table 4: CONSUMER PRICE INDEX BY TRADEABILITY (DECEMBER 2018 = 100.0)..... | 9 |
| Table 5: CORE INFLATION RATES BY EXCLUSION AND TRIMMED MEAN..... | 10 |
| Table 6: AVERAGE ANNUAL INFLATION (DECEMBER 2018 = 100.0)..... | 11 |

Consumer Price Index

Section 1: Headline Inflation

In May 2024, Botswana experienced an annual inflation rate of 3.0 percent, registering a decline of 0.1 of a percentage point from the April 2024 rate of 3.1 percent. The data analysis revealed that Miscellaneous Goods & Services, Transport, and Food & Non-Alcoholic Beverages emerged as the major contributors to the May 2024 annual inflation rate. Miscellaneous Goods & Services accounted for the most significant share, contributing 0.8 of a percentage point, followed by Transport at 0.7 of a percentage point, and Food & Non-Alcoholic Beverages at 0.6 of a percentage point. [Refer to Table 1 and Chart 5.](#)

Between April and May 2024, changes in inflation rates were observed across various regions. The Cities & Towns inflation rate decreased by 0.2 of a percentage point, from 3.2 percent in April to 3.0 percent in May. Similarly, the Urban Villages saw a decline of 0.1 of a percentage point in the inflation rate, from 3.0 percent in April to 2.9 percent in May. In contrast, the Rural Villages inflation rate remained unchanged at 3.2 percent in May 2024, aligning with the April rate. [Refer to Table 2](#)

The national Consumer Price Index realised a rise of 0.3 percent, from 133.7 in April to 134.2 in May 2024. The Urban Villages index rose by 0.4 percent from 133.9 in April to 134.4 in May 2024. The Rural Villages index was 133.8 in May 2024, a growth of 0.4 percent from the April index of 133.2. The Cities & Towns index registered an increase of 0.2 percent from 133.8 in April to 134.1 in May 2024. [Refer to Table 2.](#)

The group indices were generally moving at a steady pace between April and May 2024, recording changes of less than 1.0 percent, except for Alcoholic Beverages & Tobacco group which rose by 1.2 percent. [Refer to Table 2.](#)

The Alcoholic Beverages & Tobacco group index rose by 1.2 percent, from 134.8 in April 2024 to 136.4 in May 2024. The increase was attributable to the rise in the constituent section index of Alcoholic Beverages (1.4 percent) and Tobacco (0.2 percent).

The Transport group index registered an increase of 0.6 percent, from 153.4 in April to 154.4 in May 2024. The increase was largely due to a rise in the constituent section index of Purchase of Vehicles (2.4 percent). [Refer to Table 3.](#)

The Clothing & Footwear group index rose by 0.5 percent, from 121.4 in April 2024 to 122.0 in May 2024. The increase was attributable to the rise in the constituent section index of Cleaning, Repair & Hire (2.9 percent) and Clothing (0.4 percent).

The Food & Non-Alcoholic Beverages group index rose by 0.3 percent, from 144.0 in April to 144.5 in May 2024. The rise in the Food group index was attributed to an increase in the constituent section indices mainly; Vegetables (2.5 percent) and Coffee, Tea & Cocoa (1.3 percent). [Refer to Table 3.](#)

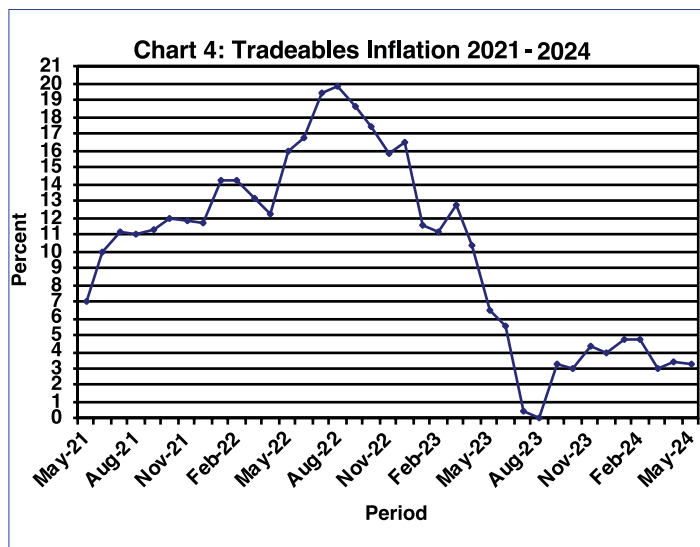
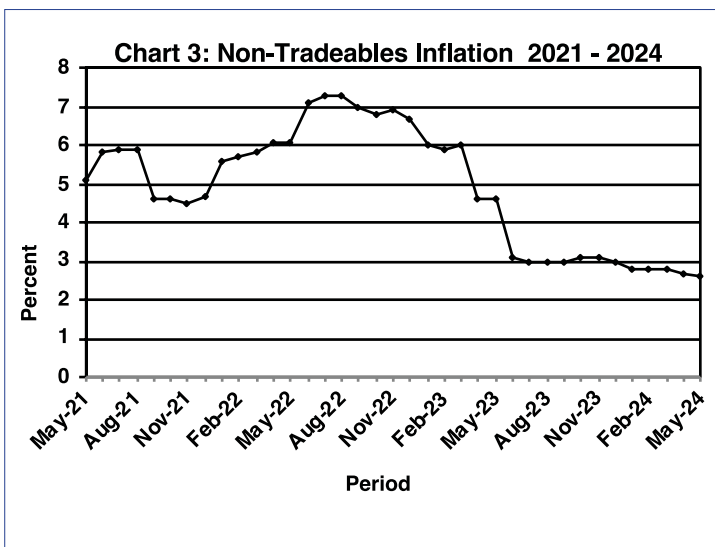
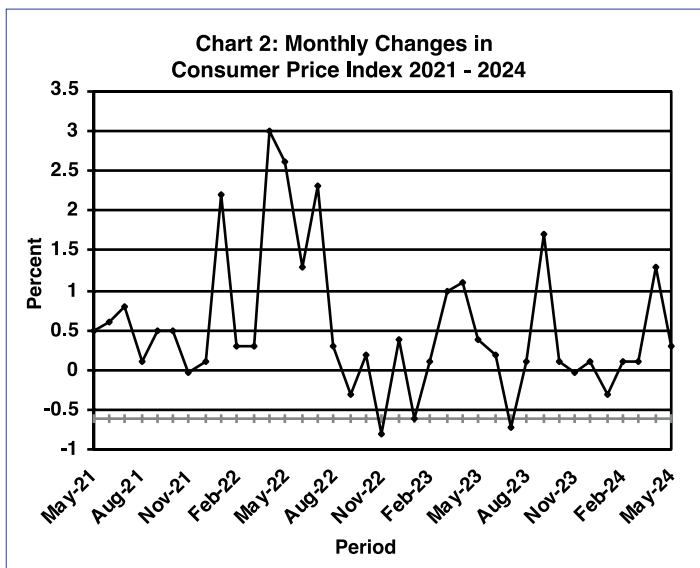
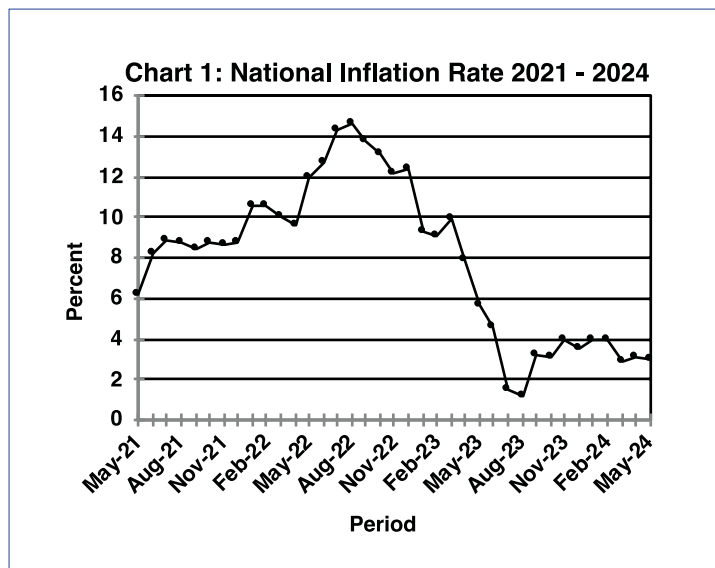
The All-Tradeables index was 140.6 in May 2024, an increase of 0.4 percent from the April index of 140.0. The Imported Tradeables Index rose by 0.5 percent, from 140.6 in April to 141.3 in May 2024. The Domestic Tradeables Index moved from 138.2 in April to 138.7 in May 2024, registering an increase of 0.4 percent. The Non-Tradeables Index went up by 0.1 percent, from 125.2 in April to 125.4 in May 2024. [Refer to Table 4.](#)

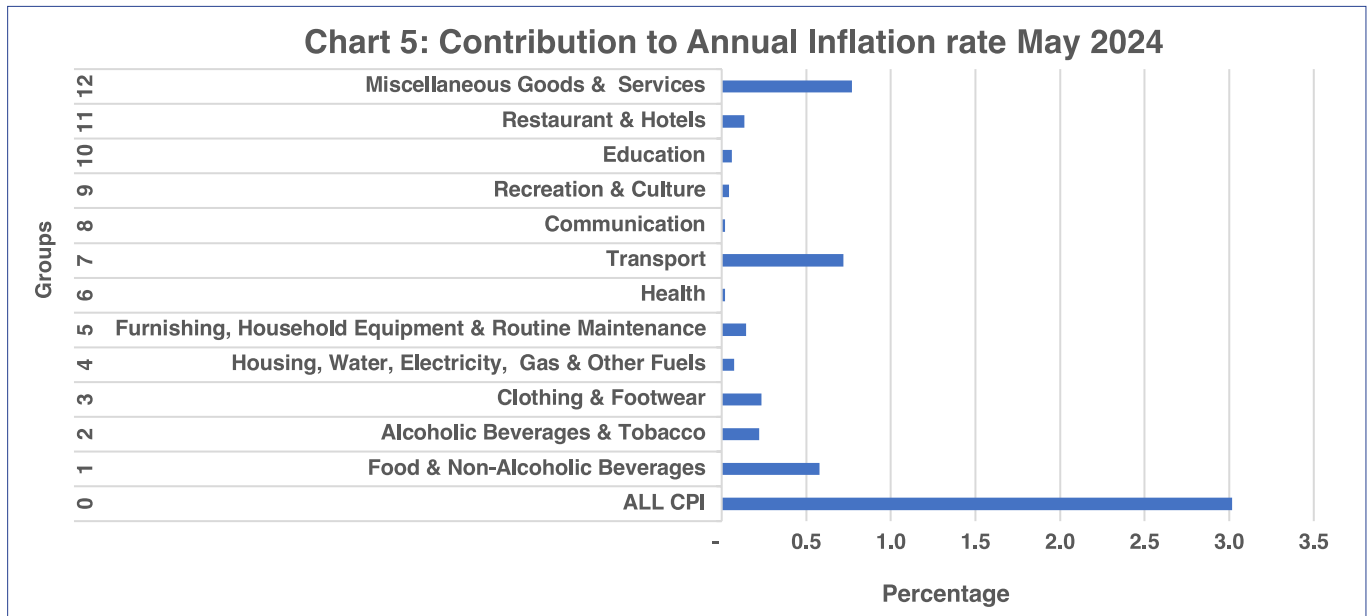
The All-Tradeables inflation rate was 3.3 percent in May 2024, a drop of 0.1 of a percentage point from the April 2024 rate of 3.4 percent. The Domestic Tradeables inflation rate registered a drop of 0.3 of a percentage point, from 3.7 percent in April to 3.4 percent in May 2024. The Imported Tradeables inflation rate went down by 0.1 of a percentage point, from 3.3 percent in April to 3.2 percent in May 2024. The Non-Tradeables inflation realised a drop of 0.1 of a percentage point, from 2.7 percent in April to 2.6 percent in May 2024. [Refer to Table 4.](#)

Section 2: Core Inflation

The Trimmed Mean Core inflation rate went down by 0.1 of a percentage point, from 2.9 percent in April to 2.8 percent in May 2024. The Core Inflation rate (excluding administered prices) was 3.0 percent in May 2024, a decrease of 0.1 of a percentage point from the April rate of 3.1 percent. Refer to Table 5.

Charts





Tables

Table 1: Contribution of Groups to Annual Inflation Rate

| Group Code | Group Name | CONTRIBUTION | | |
|------------|---|--------------|------------|------------|
| | | Mar-24 | Apr-24 | May-24 |
| 0 | All Items Inflation Rate | 2.9 | 3.1 | 3.0 |
| 1 | Food & Non-Alcoholic Beverages | 0.7 | 0.6 | 0.6 |
| 2 | Alcoholic Beverages & Tobacco | 0.2 | 0.2 | 0.2 |
| 3 | Clothing & Footwear | 0.2 | 0.2 | 0.2 |
| 4 | Housing, Water, Electricity, Gas & Other Fuels | 0.2 | 0.1 | 0.1 |
| 5 | Furnishing, Household Equipment & Routine Maintenance | 0.2 | 0.2 | 0.1 |
| 6 | Health | 0.1 | 0.0 | 0.0 |
| 7 | Transport | 0.2 | 0.7 | 0.7 |
| 8 | Communication | 0.0 | 0.0 | 0.0 |
| 9 | Recreation & Culture | 0.1 | 0.1 | 0.0 |
| 10 | Education | 0.1 | 0.1 | 0.1 |
| 11 | Restaurants & Hotels | 0.2 | 0.2 | 0.1 |
| 12 | Miscellaneous Goods & Services | 0.8 | 0.8 | 0.8 |

Note: Figures may vary slightly due to the rounding off

TABLE 2 : Consumer Price Index (December 2018 =100.0)

| | | Food | Alcohol and Tobacco | Clothing and Footwear | Housing | Furniture etc | Health | Transport | Communi-cation | Rec. & Culture | Education | Rest. & Hotels | Miscella-neous |
|-------------------------------|------|------------|---------------------|-----------------------|------------|---------------|------------|------------|----------------|----------------|--------------|----------------|----------------|
| Weights | | 13.55 | 4.34 | 5.95 | 17.45 | 4.85 | 3.38 | 23.43 | 6.94 | 2.82 | 4.60 | 3.66 | 9.01 |
| 2021 | Jan | 107.2 | 111.3 | 104.4 | 108.7 | 105.1 | 103.2 | 99.6 | 101.1 | 101.1 | 109.9 | 105.2 | 106.8 |
| | Feb | 108.0 | 111.5 | 104.6 | 109.0 | 105.2 | 103.2 | 100.0 | 101.1 | 101.6 | 109.9 | 105.5 | 106.9 |
| | Mar | 108.6 | 112.0 | 104.9 | 109.2 | 105.6 | 103.5 | 102.8 | 101.1 | 101.8 | 109.9 | 106.0 | 106.9 |
| | Apr | 111.7 | 117.1 | 105.7 | 113.3 | 106.9 | 104.3 | 108.8 | 101.8 | 103.1 | 109.9 | 107.0 | 112.2 |
| | May | 112.3 | 118.4 | 106.4 | 113.6 | 107.2 | 104.9 | 109.7 | 102.1 | 103.7 | 109.9 | 107.9 | 112.5 |
| | Jun | 112.9 | 118.8 | 106.8 | 115.8 | 107.8 | 104.9 | 110.2 | 102.2 | 104.0 | 110.0 | 108.5 | 112.6 |
| | Jul | 113.0 | 119.3 | 106.9 | 115.9 | 108.2 | 104.8 | 113.5 | 102.3 | 104.0 | 110.0 | 108.2 | 112.9 |
| | Aug | 113.2 | 119.5 | 107.0 | 116.0 | 108.4 | 104.9 | 113.4 | 102.3 | 104.1 | 110.0 | 108.7 | 113.2 |
| | Sept | 113.5 | 120.1 | 107.4 | 116.6 | 109.3 | 105.0 | 114.0 | 102.3 | 104.6 | 111.1 | 109.1 | 113.8 |
| | Oct | 114.0 | 120.8 | 107.8 | 116.7 | 109.6 | 105.2 | 117.5 | 102.3 | 104.6 | 111.1 | 109.6 | 114.1 |
| | Nov | 114.1 | 121.3 | 108.1 | 116.9 | 109.5 | 105.3 | 117.1 | 102.3 | 104.7 | 111.1 | 109.9 | 113.7 |
| | Dec | 114.4 | 121.7 | 108.3 | 117.5 | 110.0 | 105.4 | 116.8 | 102.2 | 104.9 | 111.1 | 110.0 | 114.1 |
| 2022 | Jan | 114.8 | 122.1 | 108.6 | 117.5 | 110.6 | 105.8 | 126.2 | 102.3 | 105.2 | 112.3 | 110.4 | 115.0 |
| | Feb | 115.3 | 122.2 | 108.7 | 117.6 | 110.9 | 106.0 | 127.0 | 102.3 | 105.4 | 112.4 | 110.7 | 115.4 |
| | Mar | 116.0 | 122.5 | 109.0 | 118.0 | 110.8 | 106.2 | 127.2 | 102.5 | 105.7 | 112.5 | 110.8 | 115.6 |
| | Apr | 118.6 | 123.2 | 109.4 | 122.3 | 111.6 | 106.6 | 134.5 | 102.5 | 107.4 | 112.6 | 111.5 | 121.2 |
| | May | 121.6 | 124.0 | 110.4 | 122.7 | 112.7 | 107.0 | 144.2 | 102.6 | 108.2 | 112.7 | 112.9 | 121.7 |
| | Jun | 123.8 | 124.3 | 111.2 | 123.1 | 113.5 | 107.3 | 148.7 | 102.6 | 108.4 | 112.8 | 113.4 | 123.0 |
| | Jul | 126.4 | 124.4 | 111.6 | 123.5 | 114.3 | 107.7 | 158.1 | 102.8 | 108.9 | 112.8 | 114.5 | 123.9 |
| | Aug | 128.2 | 124.4 | 111.7 | 123.0 | 114.6 | 107.9 | 158.5 | 103.9 | 109.2 | 112.8 | 114.9 | 124.3 |
| | Sept | 130.3 | 124.3 | 112.5 | 123.1 | 115.5 | 108.0 | 155.3 | 104.0 | 109.1 | 112.8 | 115.1 | 124.5 |
| | Oct | 132.0 | 124.6 | 113.1 | 123.0 | 115.9 | 108.4 | 155.4 | 104.0 | 109.3 | 112.8 | 115.4 | 124.4 |
| | Nov | 132.7 | 125.0 | 113.7 | 122.9 | 116.3 | 108.7 | 150.0 | 104.8 | 108.9 | 112.8 | 116.3 | 124.3 |
| | Dec | 133.8 | 124.8 | 114.0 | 123.0 | 116.9 | 109.1 | 151.0 | 104.8 | 108.8 | 112.8 | 116.4 | 124.8 |
| 2023 | Jan | 134.5 | 125.1 | 114.4 | 123.0 | 117.5 | 109.4 | 145.6 | 105.0 | 108.9 | 118.5 | 117.1 | 125.0 |
| | Feb | 135.3 | 125.6 | 114.8 | 123.0 | 118.0 | 109.5 | 145.1 | 105.0 | 108.9 | 118.5 | 117.4 | 125.3 |
| | Mar | 136.6 | 126.5 | 115.8 | 123.3 | 118.9 | 109.7 | 148.9 | 105.1 | 108.9 | 118.5 | 117.8 | 125.5 |
| | Apr | 138.2 | 128.7 | 116.4 | 124.3 | 119.8 | 110.5 | 149.5 | 105.1 | 110.2 | 118.5 | 118.9 | 132.5 |
| | May | 139.0 | 129.8 | 116.8 | 124.4 | 120.1 | 111.1 | 150.4 | 105.2 | 110.4 | 118.5 | 120.1 | 133.4 |
| | Jun | 139.7 | 130.2 | 117.4 | 124.7 | 119.9 | 111.1 | 150.6 | 105.2 | 110.5 | 118.5 | 120.9 | 133.7 |
| | Jul | 139.9 | 130.7 | 117.9 | 124.6 | 120.4 | 110.6 | 146.1 | 105.3 | 110.9 | 118.5 | 121.2 | 134.4 |
| | Aug | 139.8 | 131.1 | 118.1 | 124.5 | 121.0 | 110.8 | 146.1 | 105.3 | 111.4 | 118.6 | 121.8 | 134.5 |
| | Sep | 140.3 | 131.1 | 118.7 | 124.6 | 121.5 | 110.5 | 154.6 | 105.5 | 111.4 | 118.6 | 122.3 | 134.8 |
| | Oct | 140.6 | 131.7 | 119.5 | 124.4 | 121.7 | 110.7 | 154.4 | 105.5 | 111.4 | 118.6 | 122.5 | 135.2 |
| | Nov | 141.6 | 132.2 | 119.7 | 124.4 | 122.3 | 110.9 | 153.3 | 105.6 | 111.7 | 118.6 | 123.0 | 135.3 |
| | Dec | 141.9 | 132.3 | 120.1 | 124.5 | 122.7 | 111.2 | 153.2 | 105.6 | 111.9 | 118.6 | 123.6 | 135.4 |
| 2024 | Jan | 142.5 | 132.8 | 120.2 | 124.5 | 123.5 | 111.2 | 150.3 | 105.8 | 112.0 | 120.0 | 123.9 | 136.0 |
| | Feb | 143.1 | 133.0 | 120.6 | 124.5 | 123.7 | 111.4 | 150.1 | 105.7 | 112.1 | 120.2 | 124.0 | 136.1 |
| | Mar | 143.5 | 133.2 | 120.8 | 124.9 | 124.2 | 111.6 | 149.9 | 105.6 | 112.3 | 120.3 | 124.4 | 136.2 |
| | Apr | 144.0 | 134.8 | 121.4 | 124.9 | 124.0 | 111.6 | 153.4 | 105.6 | 112.5 | 120.3 | 124.7 | 144.1 |
| | May | 144.5 | 136.4 | 122.0 | 124.9 | 124.0 | 111.8 | 154.4 | 105.5 | 112.5 | 120.3 | 124.8 | 144.5 |
| % Change on Last month | | 0.3 | 1.2 | 0.5 | 0.0 | 0.0 | 0.1 | 0.6 | (0.1) | (0.0) | (0.0) | 0.2 | 0.3 |

TABLE 2: Consumer Price Index (Cont.)

| | | All Items Index | National Inflation Rate | Monthly Change | Towns & Cities Index | Urban Village Index | Rural Villages Index | Annual Inflation | | |
|-------------------------------|------|-----------------|-------------------------|----------------|----------------------|---------------------|----------------------|------------------|----------------|-------|
| | | | | | | | | Towns & Cities | Urban Villages | Rural |
| | | 100.0 | % | % | 0.38 | 0.41 | 0.21 | % | % | % |
| 2021 | Jan | 104.9 | 2.3 | 0.5 | 104.9 | 105.3 | 104.2 | 2.0 | 2.6 | 2.1 |
| | Feb | 105.2 | 2.4 | 0.3 | 105.1 | 105.6 | 104.5 | 2.1 | 2.7 | 2.3 |
| | Mar | 106.0 | 3.2 | 0.8 | 105.9 | 106.5 | 105.4 | 2.9 | 3.5 | 3.1 |
| | Apr | 109.6 | 5.6 | 3.3 | 109.7 | 110.0 | 108.4 | 5.5 | 5.9 | 5.2 |
| | May | 110.1 | 6.2 | 0.5 | 110.3 | 110.6 | 109.0 | 6.1 | 6.5 | 5.7 |
| | Jun | 110.8 | 8.2 | 0.6 | 111.0 | 111.3 | 109.6 | 8.2 | 8.3 | 7.9 |
| | Jul | 111.7 | 8.9 | 0.8 | 111.7 | 112.1 | 110.8 | 8.8 | 9.0 | 8.8 |
| | Aug | 111.8 | 8.8 | 0.1 | 111.8 | 112.3 | 110.9 | 8.7 | 8.9 | 8.8 |
| | Sept | 112.3 | 8.4 | 0.5 | 112.4 | 112.9 | 111.1 | 8.4 | 8.6 | 8.0 |
| | Oct | 113.3 | 8.8 | 0.9 | 113.3 | 113.8 | 112.4 | 8.7 | 9.0 | 8.6 |
| | Nov | 113.3 | 8.6 | (0.0) | 113.3 | 113.8 | 112.4 | 8.5 | 8.8 | 8.5 |
| | Dec | 113.5 | 8.7 | 0.1 | 113.4 | 113.9 | 112.7 | 8.6 | 8.8 | 8.7 |
| 2022 | Jan | 116.0 | 10.6 | 2.2 | 116.1 | 116.2 | 115.4 | 10.7 | 10.4 | 10.7 |
| | Feb | 116.3 | 10.6 | 0.3 | 116.4 | 116.7 | 115.6 | 10.8 | 10.4 | 10.6 |
| | Mar | 116.6 | 10.0 | 0.3 | 116.6 | 117.0 | 115.9 | 10.1 | 9.9 | 9.9 |
| | Apr | 120.1 | 9.6 | 3.0 | 120.5 | 120.4 | 118.8 | 9.9 | 9.4 | 9.6 |
| | May | 123.2 | 11.9 | 2.6 | 123.3 | 123.6 | 122.2 | 11.8 | 11.8 | 12.1 |
| | Jun | 124.8 | 12.7 | 1.3 | 125.0 | 125.1 | 124.0 | 12.7 | 12.4 | 13.1 |
| | Jul | 127.7 | 14.3 | 2.3 | 127.7 | 128.0 | 127.2 | 14.3 | 14.2 | 14.8 |
| | Aug | 128.1 | 14.6 | 0.3 | 128.0 | 128.5 | 127.7 | 14.5 | 14.5 | 15.1 |
| | Sept | 127.8 | 13.8 | (0.3) | 127.6 | 128.2 | 127.5 | 13.6 | 13.5 | 14.7 |
| | Oct | 128.1 | 13.1 | 0.2 | 128.0 | 128.4 | 127.8 | 12.9 | 12.8 | 13.8 |
| | Nov | 127.1 | 12.2 | (0.8) | 127.0 | 127.3 | 127.0 | 12.1 | 11.8 | 13.0 |
| | Dec | 127.6 | 12.4 | 0.4 | 127.4 | 127.8 | 127.6 | 12.3 | 12.2 | 13.3 |
| 2023 | Jan | 126.8 | 9.3 | (0.6) | 126.9 | 127.1 | 126.1 | 9.3 | 9.4 | 9.3 |
| | Feb | 126.9 | 9.1 | 0.1 | 126.9 | 127.3 | 126.1 | 9.0 | 9.1 | 9.1 |
| | Mar | 128.2 | 9.9 | 1.0 | 128.2 | 128.4 | 127.9 | 9.9 | 9.7 | 10.4 |
| | Apr | 129.7 | 7.9 | 1.1 | 129.7 | 130.0 | 129.0 | 7.6 | 7.9 | 8.6 |
| | May | 130.2 | 5.7 | 0.4 | 130.2 | 130.5 | 129.7 | 5.6 | 5.6 | 6.1 |
| | Jun | 130.5 | 4.6 | 0.2 | 130.5 | 130.9 | 130.0 | 4.4 | 4.6 | 4.8 |
| | Jul | 129.7 | 1.5 | (0.7) | 129.8 | 130.0 | 128.8 | 1.6 | 1.5 | 1.3 |
| | Aug | 129.7 | 1.2 | 0.1 | 129.8 | 130.0 | 129.0 | 1.5 | 1.2 | 1.0 |
| | Sep | 131.9 | 3.2 | 1.7 | 131.8 | 132.1 | 131.8 | 3.3 | 3.1 | 3.4 |
| | Oct | 132.0 | 3.1 | 0.1 | 132.0 | 132.1 | 131.9 | 3.2 | 2.9 | 3.1 |
| | Nov | 132.0 | 3.9 | (0.0) | 132.0 | 132.0 | 132.0 | 4.0 | 3.7 | 3.9 |
| | Dec | 132.1 | 3.5 | 0.1 | 132.1 | 132.1 | 132.1 | 3.7 | 3.4 | 3.5 |
| 2024 | Jan | 131.8 | 3.9 | (0.3) | 131.9 | 131.8 | 131.4 | 4.0 | 3.7 | 4.2 |
| | Feb | 131.9 | 3.9 | 0.1 | 132.0 | 131.9 | 131.5 | 4.0 | 3.7 | 4.3 |
| | Mar | 132.0 | 2.9 | 0.1 | 132.1 | 132.0 | 131.6 | 3.1 | 2.8 | 2.9 |
| | Apr | 133.7 | 3.1 | 1.3 | 133.8 | 133.9 | 133.2 | 3.2 | 3.0 | 3.2 |
| | May | 134.2 | 3.0 | 0.3 | 134.1 | 134.4 | 133.8 | 3.0 | 2.9 | 3.2 |
| % Change on last month | | 0.3 | | | 0.2 | 0.4 | 0.4 | | | |

Note: Figures may vary slightly due to the rounding off

TABLE 3: National Consumer Price Group And Section Indices (December 2018=100.0)

| | Group Section | Weights | This month May 2024 | Last month Apr 2024 | 3 months ago Feb 2024 | 6 months ago Nov 2023 | 12 months ago May 2023 | Percentage Change on: | | | |
|----------|--|--------------|------------------------|------------------------|--------------------------|--------------------------|------------------------------|-----------------------|-----------------|-----------------|--------------|
| | | | | | | | | Last month | 3 months ago | 6 months ago | 12 months |
| 1 | Food & Non-Alcoholic Beverages | 13.55 | 144.5 | 144.0 | 143.1 | 141.6 | 139.0 | 0.3 | 1.0 | 2.1 | 4.0 |
| 1.1 | Bread & Cereals | 4.26 | 156.7 | 156.3 | 154.9 | 153.3 | 151.5 | 0.2 | 1.2 | 2.2 | 3.4 |
| 1.2 | Meat (Fresh, Chilled & Frozen) | 2.36 | 147.2 | 147.2 | 146.7 | 141.3 | 136.9 | 0.0 | 0.3 | 4.2 | 7.5 |
| 1.3 | Fish (Fresh, Chilled & Frozen) | 0.18 | 133.7 | 134.2 | 134.3 | 133.6 | 132.3 | (0.4) | (0.5) | 0.1 | 1.0 |
| 1.4 | Milk, Cheese & Milk Products | 0.98 | 131.1 | 130.6 | 129.3 | 128.8 | 125.3 | 0.4 | 1.4 | 1.8 | 4.6 |
| 1.5 | Oils & Fats | 0.92 | 164.5 | 165.8 | 168.5 | 170.6 | 182.2 | (0.8) | (2.3) | (3.6) | (9.7) |
| 1.6 | Fruits | 0.78 | 127.2 | 127.0 | 126.7 | 125.4 | 119.8 | 0.2 | 0.4 | 1.5 | 6.2 |
| 1.7 | Vegetables | 1.08 | 146.9 | 143.4 | 142.4 | 145.5 | 139.1 | 2.5 | 3.1 | 1.0 | 5.6 |
| 1.8 | Sugar, Jam, Honey, Chocolate & Confectionery | 1.11 | 121.6 | 121.2 | 119.9 | 117.7 | 110.9 | 0.3 | 1.4 | 3.3 | 9.6 |
| 1.9 | Food Not Elsewhere Classified | 0.54 | 136.8 | 136.7 | 135.2 | 132.8 | 129.8 | 0.1 | 1.2 | 3.0 | 5.4 |
| 1.10 | Coffee, Tea & Cocoa | 0.73 | 134.3 | 132.6 | 129.9 | 128.3 | 124.3 | 1.3 | 3.4 | 4.7 | 8.0 |
| 1.11 | Mineral Waters, Soft Drinks, Fruits & Vegetables Juices | 0.62 | 123.3 | 123.1 | 122.0 | 121.1 | 120.3 | 0.1 | 1.0 | 1.8 | 2.5 |
| 2 | Alcoholic Beverages & Tobacco | 4.34 | 136.4 | 134.8 | 133.0 | 132.2 | 129.8 | 1.2 | 2.6 | 3.2 | 5.1 |
| 2.1 | Alcoholic Beverages | 3.51 | 138.5 | 136.6 | 134.7 | 133.8 | 131.0 | 1.4 | 2.9 | 3.6 | 5.7 |
| 2.2 | Tobacco | 0.82 | 127.5 | 127.3 | 125.6 | 125.5 | 124.6 | 0.2 | 1.5 | 1.6 | 2.4 |
| 3 | Clothing & Footwear | 5.95 | 122.0 | 121.4 | 120.6 | 119.7 | 116.8 | 0.5 | 1.2 | 1.9 | 4.4 |
| 3.1 | Clothing | 2.60 | 121.9 | 121.4 | 120.7 | 119.9 | 116.8 | 0.4 | 1.0 | 1.7 | 4.3 |
| 3.2 | Other Articles of Clothing | 0.72 | 120.4 | 120.4 | 120.0 | 119.3 | 117.3 | 0.0 | 0.3 | 1.0 | 2.7 |
| 3.3 | Cleaning, Repair & Hire | 0.61 | 135.0 | 131.2 | 130.1 | 129.8 | 126.3 | 2.9 | 3.8 | 4.0 | 6.9 |
| 3.4 | Footwear | 2.03 | 118.7 | 118.7 | 117.7 | 116.5 | 113.8 | 0.0 | 0.8 | 1.9 | 4.3 |
| 4 | Housing, Water, Electricity, Gas & Other Fuels | 17.45 | 124.9 | 124.9 | 124.5 | 124.4 | 124.4 | 0.0 | 0.3 | 0.4 | 0.4 |
| 4.1 | Rent Paid by Tenants | 7.78 | 123.3 | 123.3 | 122.5 | 122.4 | 121.3 | 0.0 | 0.7 | 0.8 | 1.7 |
| 4.2 | Materials for Maintenance & Repair of Dwellings | 3.83 | 126.0 | 125.9 | 126.0 | 125.4 | 126.7 | 0.1 | 0.0 | 0.5 | (0.5) |
| 4.3 | Water Supply & Miscellaneous Services | 1.96 | 112.7 | 112.7 | 112.7 | 112.7 | 112.7 | 0.0 | 0.0 | 0.0 | 0.0 |
| 4.4 | Electricity, Gas & Other Fuels | 3.89 | 133.1 | 133.1 | 133.0 | 133.2 | 134.0 | 0.0 | 0.0 | (0.1) | (0.7) |
| 5 | Furnishing, H/H Equipment & Routine Maintenance | 4.85 | 124.0 | 124.0 | 123.7 | 122.3 | 120.1 | 0.0 | 0.2 | 1.4 | 3.2 |
| 5.1 | Furniture & Furnishing | 1.35 | 120.8 | 120.6 | 121.0 | 118.8 | 116.8 | 0.2 | (0.2) | 1.7 | 3.4 |
| 5.2 | Carpets & Other Floor Coverings | 0.27 | 113.8 | 114.5 | 115.2 | 114.9 | 114.4 | (0.6) | (1.2) | (1.0) | (0.5) |
| 5.3 | Household Textiles | 0.29 | 119.2 | 118.6 | 118.1 | 116.5 | 116.3 | 0.6 | 1.0 | 2.3 | 2.5 |
| 5.4 | Household Appliances | 0.72 | 128.0 | 128.1 | 128.0 | 127.2 | 122.6 | (0.1) | (0.0) | 0.7 | 4.4 |
| 5.5 | Glassware, Tableware & Household Utensils | 0.23 | 131.7 | 131.8 | 131.6 | 130.7 | 127.1 | (0.0) | 0.1 | 0.8 | 3.6 |
| 5.6 | Small Tools, Miscellaneous Accessories | 0.04 | 128.2 | 127.9 | 127.0 | 126.1 | 124.9 | 0.2 | 1.0 | 1.7 | 2.6 |
| 5.7 | Goods & Services for Household Maintenance | 1.95 | 125.8 | 125.9 | 125.0 | 123.7 | 121.9 | (0.1) | 0.7 | 1.7 | 3.2 |
| 6 | Health | 3.38 | 111.8 | 111.6 | 111.4 | 110.9 | 111.1 | 0.1 | 0.3 | 0.8 | 0.6 |
| 6.1 | Medical Products, Applications & Equipments | 0.98 | 123.8 | 123.5 | 123.5 | 122.6 | 121.8 | 0.2 | 0.3 | 1.0 | 1.6 |
| 6.2 | Out-Patient Services | 0.93 | 111.2 | 110.9 | 110.3 | 109.4 | 110.6 | 0.2 | 0.8 | 1.6 | 0.5 |
| 6.3 | Hospital Services | 1.47 | 104.1 | 104.1 | 104.1 | 104.1 | 104.1 | 0.0 | 0.0 | 0.0 | 0.0 |

Note: Figures may vary slightly due to the rounding off

TABLE 3: National Consumer Price Group And Section Indices (December 2018=100.0) (Cont.)

| | Group Section | Weights | This month May 2024 | Last month Apr 2024 | 3 months ago Feb 2024 | 6 months ago Nov 2023 | 12 months ago May 2023 | Percentage Change on: | | | |
|-----------|---|--------------|------------------------|------------------------|--------------------------|--------------------------|---------------------------|-----------------------|--------------|--------------|---------------|
| | | | | | | | | Last month | 3 months ago | 6 months ago | 12 months ago |
| 7 | Transport | 23.43 | 154.4 | 153.4 | 150.1 | 153.3 | 150.4 | 0.6 | 2.8 | 0.7 | 2.7 |
| 7.1 | Purchase of Vehicles | 5.74 | 155.5 | 151.8 | 151.7 | 152.2 | 152.2 | 2.4 | 2.5 | 2.2 | 2.2 |
| 7.2 | Operation of Personal Transport | 12.56 | 158.1 | 158.1 | 152.0 | 157.7 | 152.2 | 0.0 | 4.0 | 0.3 | 3.9 |
| 7.3 | Transport Services | 5.13 | 143.8 | 143.8 | 143.8 | 143.8 | 143.8 | 0.0 | 0.0 | 0.0 | 0.0 |
| 8 | Communication | 6.94 | 105.5 | 105.6 | 105.7 | 105.6 | 105.2 | (0.1) | (0.2) | (0.1) | 0.3 |
| 8.1 | Postal Services | 0.21 | 127.5 | 127.5 | 127.5 | 127.5 | 127.5 | 0.0 | 0.0 | 0.0 | 0.0 |
| 8.2 | Telephone & Telefax Equipment | 1.13 | 117.1 | 117.7 | 118.2 | 117.6 | 115.0 | (0.5) | (0.9) | (0.4) | 1.9 |
| 8.3 | Telephone & Telefax Services | 5.60 | 102.3 | 102.3 | 102.3 | 102.3 | 102.3 | 0.0 | 0.0 | 0.0 | 0.0 |
| 9 | Recreation & Culture | 2.82 | 112.5 | 112.5 | 112.1 | 111.7 | 110.4 | (0.0) | 0.3 | 0.7 | 1.9 |
| 9.1 | Audio Visual, Photographic & Information Processing Equipment | 2.10 | 109.8 | 109.9 | 110.2 | 109.7 | 108.3 | (0.1) | (0.4) | 0.1 | 1.4 |
| 9.2 | Other Recreational Items & Equipments | 0.30 | 119.5 | 119.0 | 118.3 | 118.3 | 117.2 | 0.4 | 1.0 | 1.0 | 1.9 |
| 9.3 | Recreational & Cultural Services | 0.31 | 122.1 | 122.0 | 117.4 | 117.2 | 117.2 | 0.1 | 4.0 | 4.1 | 4.2 |
| 9.4 | Newspapers, Books & Stationary | 0.11 | 118.1 | 118.0 | 117.2 | 116.8 | 114.8 | 0.1 | 0.8 | 1.1 | 2.9 |
| 10 | Education | 4.60 | 120.3 | 120.3 | 120.2 | 118.6 | 118.5 | (0.0) | 0.1 | 1.4 | 1.5 |
| 10.1 | Pre-Primary & Primary Education | 1.89 | 124.7 | 124.7 | 124.5 | 122.4 | 122.3 | 0.0 | 0.1 | 1.9 | 1.9 |
| 10.2 | Secondary & Tertiary Education | 2.70 | 117.2 | 117.2 | 117.1 | 115.9 | 115.9 | (0.0) | 0.0 | 1.1 | 1.1 |
| 11 | Restaurants & Hotels | 3.66 | 124.8 | 124.7 | 124.0 | 123.0 | 120.1 | 0.2 | 0.7 | 1.5 | 3.9 |
| 11.1 | Restaurants, Cafes & the Like | 3.02 | 128.7 | 128.5 | 127.8 | 126.5 | 123.5 | 0.2 | 0.7 | 1.7 | 4.3 |
| 11.2 | Accommodation Services | 0.64 | 106.5 | 106.5 | 106.0 | 106.2 | 104.4 | (0.0) | 0.5 | 0.3 | 2.1 |
| 12 | Miscellaneous Goods & Services | 9.01 | 144.5 | 144.1 | 136.1 | 135.3 | 133.4 | 0.3 | 6.2 | 6.8 | 8.3 |
| 12.1 | Personal Care | 2.33 | 131.6 | 131.2 | 130.2 | 127.9 | 124.8 | 0.3 | 1.1 | 2.9 | 5.5 |
| 12.2 | Personal Effects Not Elsewhere Classified | 0.22 | 106.7 | 106.5 | 106.5 | 106.3 | 105.8 | 0.2 | 0.2 | 0.4 | 0.9 |
| 12.3 | Social Protection | 0.13 | 123.2 | 123.2 | 123.1 | 120.4 | 120.4 | 0.0 | 0.1 | 2.4 | 2.4 |
| 12.4 | Insurance | 3.62 | 169.4 | 169.6 | 151.2 | 151.2 | 151.0 | (0.1) | 12.0 | 12.1 | 12.2 |
| 12.5 | Financial Services | 1.09 | 126.4 | 125.5 | 125.2 | 125.3 | 124.1 | 0.7 | 0.9 | 0.8 | 1.8 |
| 12.6 | Taxes, Licences & Fees | 1.61 | 126.1 | 124.7 | 122.9 | 122.3 | 117.2 | 1.1 | 2.6 | 3.1 | 7.6 |
| | All-Items Index | 100.0 | 134.2 | 133.7 | 131.9 | 132.0 | 130.2 | 0.3 | 1.7 | 1.6 | 3.0 |

Note: Figures may vary slightly due to the rounding off

TABLE 4: Consumer Price Index By Tradeability (December 2018 = 100.0)

| | All Items | | Non-Tradable | | Domestic Tradable | | Imported Tradable | | All Tradable | |
|-------------------------------|---------------|-----------|--------------|-----------|-------------------|-----------|-------------------|-----------|--------------|-----------|
| | Index | Inflation | Index | Inflation | Index | Inflation | Index | Inflation | Index | Inflation |
| Weights | 100.00 | | 42.29 | | 15.46 | | 42.26 | | 57.71 | |
| 2021 | | | | | | | | | | |
| Jan | 104.9 | 2.3 | 107.0 | 4.4 | 109.8 | 4.6 | 101.0 | -0.7 | 103.4 | 0.7 |
| Feb | 105.2 | 2.4 | 107.1 | 4.4 | 110.5 | 4.8 | 101.5 | -0.5 | 103.8 | 1.0 |
| Mar | 106.0 | 3.2 | 107.1 | 4.4 | 110.8 | 5.0 | 103.3 | 1.3 | 105.3 | 2.3 |
| Apr | 109.6 | 5.6 | 109.8 | 4.9 | 113.7 | 7.2 | 107.9 | 5.7 | 109.4 | 6.1 |
| May | 110.1 | 6.2 | 110.0 | 5.1 | 114.0 | 6.9 | 108.9 | 7.0 | 110.3 | 7.0 |
| Jun | 110.8 | 8.2 | 110.8 | 5.8 | 114.0 | 5.9 | 109.7 | 11.6 | 110.8 | 10.0 |
| Jul | 111.7 | 8.9 | 110.9 | 5.9 | 113.6 | 5.1 | 111.9 | 13.6 | 112.3 | 11.2 |
| Aug | 111.8 | 8.8 | 111.0 | 5.9 | 113.8 | 4.8 | 112.0 | 13.4 | 112.4 | 11.0 |
| Sept | 112.3 | 8.4 | 111.4 | 4.6 | 114.4 | 5.3 | 112.5 | 13.6 | 113.0 | 11.3 |
| Oct | 113.3 | 8.8 | 111.5 | 4.6 | 114.7 | 5.4 | 114.6 | 14.7 | 114.7 | 12.0 |
| Nov | 113.3 | 8.6 | 111.5 | 4.5 | 114.8 | 5.3 | 114.6 | 14.3 | 114.6 | 11.8 |
| Dec | 113.5 | 8.7 | 111.9 | 4.7 | 115.1 | 5.3 | 114.5 | 14.2 | 114.7 | 11.7 |
| 2022 | | | | | | | | | | |
| Jan | 116.0 | 10.6 | 113.1 | 5.6 | 115.6 | 5.2 | 119.1 | 17.9 | 118.2 | 14.3 |
| Feb | 116.3 | 10.6 | 113.2 | 5.7 | 115.9 | 4.9 | 119.7 | 18.0 | 118.7 | 14.3 |
| Mar | 116.6 | 10.0 | 113.3 | 5.8 | 116.2 | 4.9 | 120.1 | 16.3 | 119.1 | 13.1 |
| Apr | 120.1 | 9.6 | 116.5 | 6.1 | 117.9 | 3.7 | 124.6 | 15.5 | 122.8 | 12.2 |
| May | 123.2 | 11.9 | 116.8 | 6.1 | 119.2 | 4.6 | 131.0 | 20.3 | 127.9 | 16.0 |
| Jun | 124.8 | 12.7 | 118.7 | 7.1 | 122.4 | 7.3 | 131.9 | 20.3 | 129.4 | 16.8 |
| Jul | 127.7 | 14.3 | 119.0 | 7.3 | 124.8 | 9.9 | 137.6 | 23.0 | 134.2 | 19.4 |
| Aug | 128.1 | 14.6 | 119.0 | 7.3 | 125.6 | 10.4 | 138.2 | 23.4 | 134.8 | 19.9 |
| Sept | 127.8 | 13.8 | 119.2 | 7.0 | 126.8 | 10.8 | 136.8 | 21.6 | 134.2 | 18.7 |
| Oct | 128.1 | 13.1 | 119.1 | 6.8 | 127.9 | 11.5 | 137.2 | 19.7 | 134.8 | 17.5 |
| Nov | 127.1 | 12.2 | 119.2 | 6.9 | 128.3 | 11.7 | 134.5 | 17.4 | 132.8 | 15.9 |
| Dec | 127.6 | 12.4 | 119.4 | 6.7 | 129.4 | 12.4 | 135.2 | 18.0 | 133.6 | 16.5 |
| 2023 | | | | | | | | | | |
| Jan | 126.8 | 9.3 | 119.8 | 6.0 | 130.6 | 13.0 | 132.4 | 11.1 | 131.9 | 11.6 |
| Feb | 126.9 | 9.1 | 119.9 | 5.9 | 131.1 | 13.2 | 132.4 | 10.6 | 132.0 | 11.2 |
| Mar | 128.2 | 9.9 | 120.1 | 6.0 | 131.8 | 13.4 | 135.0 | 12.4 | 134.2 | 12.7 |
| Apr | 129.7 | 7.9 | 121.8 | 4.6 | 133.3 | 13.1 | 136.2 | 9.3 | 135.4 | 10.3 |
| May | 130.2 | 5.7 | 122.1 | 4.6 | 134.1 | 12.5 | 136.9 | 4.5 | 136.2 | 6.5 |
| Jun | 130.5 | 4.6 | 122.4 | 3.1 | 134.6 | 10.0 | 137.2 | 4.0 | 136.5 | 5.5 |
| Jul | 129.7 | 1.5 | 122.5 | 3.0 | 134.7 | 7.9 | 134.9 | -1.9 | 134.9 | 0.5 |
| Aug | 129.7 | 1.2 | 122.6 | 3.0 | 134.7 | 7.2 | 135.0 | -2.3 | 135.0 | 0.1 |
| Sep | 131.9 | 3.2 | 122.7 | 3.0 | 134.6 | 6.2 | 140.0 | 2.3 | 138.6 | 3.3 |
| Oct | 132.0 | 3.1 | 122.8 | 3.1 | 134.8 | 5.4 | 140.1 | 2.1 | 138.8 | 3.0 |
| Nov | 132.0 | 3.9 | 122.9 | 3.1 | 135.4 | 5.6 | 139.8 | 3.9 | 138.6 | 4.4 |
| Dec | 132.1 | 3.5 | 123.0 | 3.0 | 135.6 | 4.8 | 139.9 | 3.5 | 138.8 | 3.9 |
| 2024 | | | | | | | | | | |
| Jan | 131.8 | 3.9 | 123.1 | 2.8 | 136.5 | 4.5 | 138.6 | 4.7 | 138.1 | 4.7 |
| Feb | 131.9 | 3.9 | 123.2 | 2.8 | 137.1 | 4.6 | 138.6 | 4.7 | 138.2 | 4.7 |
| Mar | 132.0 | 2.9 | 123.4 | 2.8 | 137.4 | 4.3 | 138.5 | 2.6 | 138.2 | 3.0 |
| Apr | 133.7 | 3.1 | 125.2 | 2.7 | 138.2 | 3.7 | 140.6 | 3.3 | 140.0 | 3.4 |
| May | 134.2 | 3.0 | 125.4 | 2.6 | 138.7 | 3.4 | 141.3 | 3.2 | 140.6 | 3.3 |
| % Change on last month | 0.3 | | 0.1 | | 0.4 | | 0.5 | | 0.4 | |

Note: Figures may vary slightly due to the rounding off

TABLE 5: Core Inflation Rates By Exclusion And Trimmed Mean

| Year | Month | Consumer Price Index (Trimmed Mean) (December 2018 = 100) | Core Monthly Inflation Rate (Trimmed Mean) (percentage) | Consumer Price Index (Excluding Administered Prices) (December 2018 = 100) | Core Monthly Inflation (Excluding Administered Prices) (percentage) |
|-------------|-------|---|---|--|---|
| 2021 | | | | | |
| | Jan | 105.3 | 2.2 | 106.7 | 3.4 |
| | Feb | 105.6 | 2.4 | 107.1 | 3.6 |
| | Mar | 106.2 | 2.8 | 107.5 | 3.9 |
| | Apr | 109.6 | 5.4 | 110.1 | 6.1 |
| | May | 110.0 | 5.8 | 110.9 | 6.7 |
| | Jun | 111.0 | 7.9 | 111.6 | 6.8 |
| | Jul | 113.0 | 8.4 | 112.0 | 7.0 |
| | Aug | 113.1 | 8.3 | 112.1 | 6.8 |
| | Sept | 113.1 | 8.0 | 112.7 | 7.1 |
| | Oct | 113.7 | 8.2 | 113.2 | 7.2 |
| | Nov | 113.7 | 8.0 | 113.2 | 7.0 |
| | Dec | 113.9 | 8.0 | 113.4 | 7.1 |
| 2022 | | | | | |
| | Jan | 116.2 | 8.8 | 113.8 | 6.7 |
| | Feb | 116.6 | 8.8 | 114.4 | 6.8 |
| | Mar | 116.9 | 8.6 | 114.8 | 6.8 |
| | Apr | 119.9 | 8.1 | 116.5 | 5.9 |
| | May | 121.9 | 9.4 | 118.0 | 6.4 |
| | Jun | 123.7 | 10.3 | 119.0 | 6.6 |
| | Jul | 125.8 | 11.5 | 120.4 | 7.6 |
| | Aug | 126.1 | 11.8 | 121.1 | 8.0 |
| | Sept | 126.0 | 11.4 | 121.7 | 8.0 |
| | Oct | 126.3 | 11.1 | 122.2 | 8.0 |
| | Nov | 125.9 | 10.8 | 122.6 | 8.3 |
| | Dec | 126.5 | 11.2 | 123.3 | 8.7 |
| 2023 | | | | | |
| | Jan | 127.0 | 8.5 | 124.2 | 9.1 |
| | Feb | 127.0 | 8.2 | 124.3 | 8.7 |
| | Mar | 128.5 | 9.2 | 125.1 | 8.9 |
| | Apr | 128.9 | 7.1 | 126.2 | 8.3 |
| | May | 126.0 | 5.4 | 127.0 | 7.7 |
| | Jun | 126.7 | 4.3 | 127.5 | 7.1 |
| | Jul | 126.3 | 2.5 | 127.6 | 5.9 |
| | Aug | 126.4 | 2.4 | 127.7 | 5.5 |
| | Sep | 127.4 | 3.3 | 128.1 | 5.2 |
| | Oct | 128.5 | 3.2 | 128.2 | 4.9 |
| | Nov | 132.0 | 3.7 | 128.6 | 4.9 |
| | Dec | 131.8 | 3.3 | 128.8 | 4.4 |
| 2024 | | | | | |
| | Jan | 132.9 | 3.7 | 129.3 | 4.1 |
| | Feb | 132.4 | 3.7 | 129.5 | 4.1 |
| | Mar | 132.4 | 2.6 | 129.7 | 3.7 |
| | Apr | 132.0 | 2.9 | 130.1 | 3.1 |
| | May | 132.8 | 2.8 | 130.8 | 3.0 |

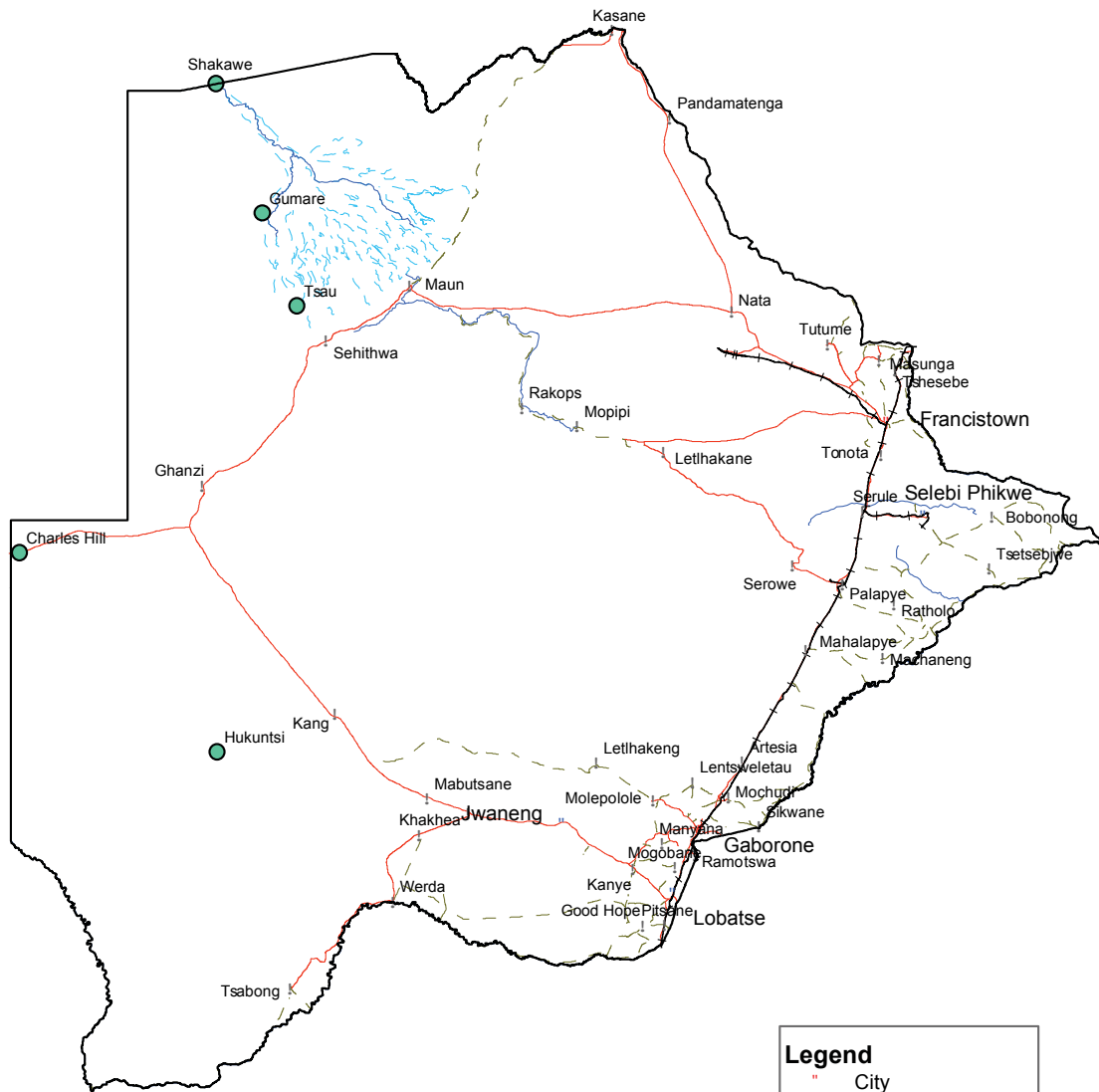
Note: Figures may vary slightly due to the rounding off

TABLE 6: Average Annual Inflation (December 2018=100)

| | Group | Weights | 2013 | 2014 | 2015 | 2016 | 2017 | 2018 | 2019 | 2020 | 2021 | 2022 | 2023 |
|----|---|--------------|------------|------------|------------|------------|------------|------------|------------|------------|------------|-------------|------------|
| 1 | Food & Non-Alcoholic Beverages | 13.55 | 5.4 | 3.0 | 1.3 | 2.7 | 3.4 | (0.5) | 1.4 | 3.7 | 6.0 | 11.1 | 11.9 |
| 2 | Alcoholic Beverages & Tobacco | 4.34 | 10.3 | 9.0 | 6.1 | 2.5 | 4.5 | 1.1 | 2.8 | 5.4 | 8.9 | 5.3 | 4.6 |
| 3 | Clothing & Footwear | 5.95 | 6.3 | 6.0 | 7.6 | 6.5 | 3.2 | 1.8 | 1.3 | 2.2 | 3.5 | 4.4 | 5.7 |
| 4 | Housing, Water, Electr. Gas & Other Fuels | 17.45 | 4.3 | 3.9 | 7.1 | 6.3 | 5.4 | 4.1 | 2.1 | 5.1 | 7.7 | 6.6 | 2.1 |
| 5 | Furnishing, H/H Equipment & Routine Maintenance | 4.85 | 4.9 | 5.0 | 6.1 | 3.0 | 3.3 | 2.1 | 2.1 | 2.4 | 3.7 | 5.5 | 5.9 |
| 6 | Health | 3.38 | 5.5 | 8.3 | 6.3 | 3.0 | 2.4 | 1.1 | 1.0 | 1.3 | 2.7 | 2.7 | 2.9 |
| 7 | Transport | 23.43 | 7.3 | 1.2 | (5.1) | (2.7) | 1.6 | 7.5 | 6.2 | (2.4) | 12.3 | 31.1 | 4.2 |
| 8 | Communication | 6.94 | 0.3 | 0.3 | 0.3 | 0.2 | 0.5 | (4.6) | (3.8) | 0.5 | 1.3 | 1.3 | 1.9 |
| 9 | Recreation & Culture | 2.82 | 4.5 | 4.2 | 5.7 | 3.0 | 2.2 | 1.8 | 0.4 | (0.2) | 3.5 | 4.2 | 2.5 |
| 10 | Education | 4.60 | 4.7 | 7.4 | 6.4 | 3.7 | 4.1 | 5.5 | 3.1 | 4.7 | 2.2 | 2.2 | 5.2 |
| 11 | Restaurants & Hotels | 3.66 | 7.9 | 7.6 | 5.5 | 4.0 | 3.7 | 3.4 | 2.5 | 3.2 | 3.1 | 5.2 | 6.2 |
| 12 | Miscellaneous Goods & Services | 9.01 | 1.2 | 5.2 | 7.2 | 7.5 | 3.9 | 6.4 | 5.3 | 2.0 | 5.4 | 8.8 | 8.7 |
| | All-Items Index | 100.0 | 5.9 | 4.4 | 3.1 | 2.8 | 3.3 | 3.2 | 2.8 | 1.9 | 6.7 | 12.1 | 5.2 |

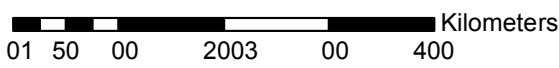
Note: Figures may vary slightly due to the rounding off

CPI Area Coverage



Legend

- City
- Towns
- ! Major Villages
- Rivers
- Main Roads
- - - Secondary Roads
- +— Railway
- - - Swamp



Compiled and Prepared by Statistics Botswana, 2016

Glossary

Consumer Price Index (CPI) is an index which measures price changes in goods and services with reference to a base period.

Inflation is a measurement of prices movement of goods and services in a particular country.

Contributions: These are percentage points that add up to the overall inflation rate. The contribution of a **group** to overall annual inflation depends on its weight in the consumption basket and its own annual inflation rate.

Domestic Tradeables refers to the goods and services which a country (Botswana) can export to other countries.

Imported Tradeables represents the goods and services which a country (Botswana) imports from other countries (trading partners).

Non-Tradeables refers to the goods and services which a country cannot either export to or import from other countries.

All –Tradeables refers to the total of **Domestic** and **Imported Tradeables**.

Trimmed Mean Core Inflation- attempts to remove 8 percent (by weight) of the commodity sub-groups price changes at each of the ends of an ordered series of price changes in any given month.

Core inflation by Exclusion is a measure used to remove the volatility inherent in prices that are only adjusted periodically and not always in response to currently prevailing market forces.





CONSUMER PRICE INDEX MAY 2024



Private Bag 0024, Gaborone
Tel: 3671300 Fax: 3952201
Toll Free: 0800 600 200

Private Bag F193,
Francistown
Tel: 241 5848 Fax: 241 7540

Private Bag 47
Maun
Tel: 371 5716 Fax: 686 4327

E-mail: info@statsbots.org.bw Website: <http://www.statsbots.org.bw>



STATISTICS BOTSWANA