



Consumer Price Index

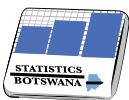
October 2020

Private Bag 47
Maun
Tel: 371 5716
Fax: 686 4327

Private Bag 32
Ghanzi
Tel: 371 5723
Fax: 659 7506

Private Bag F193,
City of Francistown
Tel: 241 5848,
Fax: 241 7540

Private Bag 0024, Gaborone
Tel: 3671300
Fax: 3952201
Toll Free: 0800 600 200



STATISTICS BOTSWANA

E-mail: info@statsbots.org.bw
Website: <http://www.statsbots.org.bw>

Contact Statistician:
Phaladi Labobedi

CONTENTS

SECTION 1: HEADLINE INFLATION	1
SECTION 2: CORE INFLATION	2
GLOSSARY:	13

CHARTS

CHART 1: NATIONAL RATES OF INFLATION	2
CHART 2: MONTHLY CHANGES IN THE CONSUMER PRICE INDEX	2
CHART 3: NON-TRADEABLES INFLATION RATES	2
CHART 4: TRADEABLES INFLATION RATES	2
CHART 5: CONTRIBUTIONS OF GROUPS TO ANNUAL INFLATION RATE	3

TABLES

TABLE 1: CONTRIBUTIONS OF GROUPS TO ANNUAL INFLATION RATE	4
TABLE 2 : CONSUMER PRICE INDEX (DECEMBER 2018 =100.0)	5
TABLE 3: NATIONAL CONSUMER PRICE GROUP & SECTION INDICES (DECEMBER 2018 = 100.0)	7
TABLE 4: CONSUMER PRICE INDEX BY TRADEABILITY (DECEMBER 2018 = 100.0)	9
TABLE 5: CORE INFLATION RATES BY EXCLUSION AND TRIMMED MEAN	10
TABLE 6: AVERAGE ANNUAL INFLATION (DECEMBER 2018 = 100.0)	11

COMMENTARY

SECTION 1: HEADLINE INFLATION

The annual inflation rate in October 2020 was 2.2 percent, registering an increase of 0.4 of a percentage point on the September rate of 1.8 percent. The main contributors to the October annual inflation rate were; Housing, Water, Electricity, Gas & Other Fuels (1.2 percent), Transport (-0.6 percent) and Food & Non-Alcoholic Beverages (0.6 percent). Refer to [Table 1](#)

The inflation rates for regions between September and October 2020 showed that the Cities & Towns' inflation rate recorded a growth of 0.5 of a percentage point, from 1.7 percent to 2.2 percent. The Urban Villages' rate went up by 0.5 of a percentage point, from 1.9 percent in September to 2.4 percent in October. The Rural Villages' rate moved from 1.6 to 2.0 percent, registering a rise of 0.4 of a percentage point. Refer to [Table 2](#)

The national Consumer Price Index was 104.1 in October 2020, recording an increase of 0.5 percent, from 103.6 recorded in September 2020. The Cities & Towns Index rose by 0.5 percent, from 103.7 in September to 104.2 in October. The Rural Villages index registered an increase of 0.5 percent over the two months, moving from 102.9 to 103.4. The Urban Villages index moved from 104.0 in September to 104.4 in October, registering a rise of 0.4 percent. Refer to [Table 2](#)

Group indices were generally moving at a steady pace between September and October 2020, recording changes of less than 1.0 percent, except the Transport group index which registered an increase of 1.5 percent. Refer to [Table 3](#).

The Transport group index registered an increase of 1.5 percent, from 97.0 in September to 98.4 in October. This was due to an increase in the constituent section index of Operation of Personal Transport (2.3 percent) and purchase of Vehicles (1.3 percent). The increase in Operation of Personal Transport section index was attributed to the rise in retail pump prices for petrol (95) and diesel (50ppm) by P0.32 and P0.08 per litre respectively, which was effected on 19th September 2020.

The Alcoholic Beverages & Tobacco group index rose by 0.7 percent, from 110.2 to 111.0 during the period under review. This was owing to the rise in the constituent section index, particularly Alcoholic Beverages (0.8 percent).

The Communication group index rose by 0.4 percent, from 100.8 to 101.3 over the two periods. This was due to an increase in the constituent section index of Postal Services (13.6 percent). The rise in Postal Services section index was owed to the increase in the Botswana Post tariffs with effect from 1st October 2020.

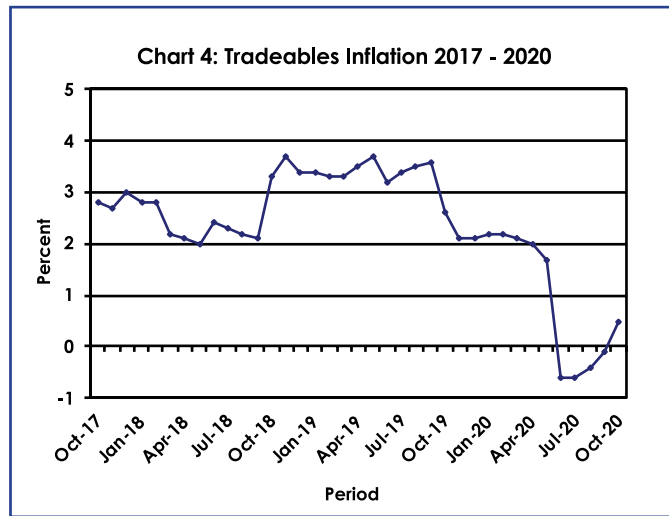
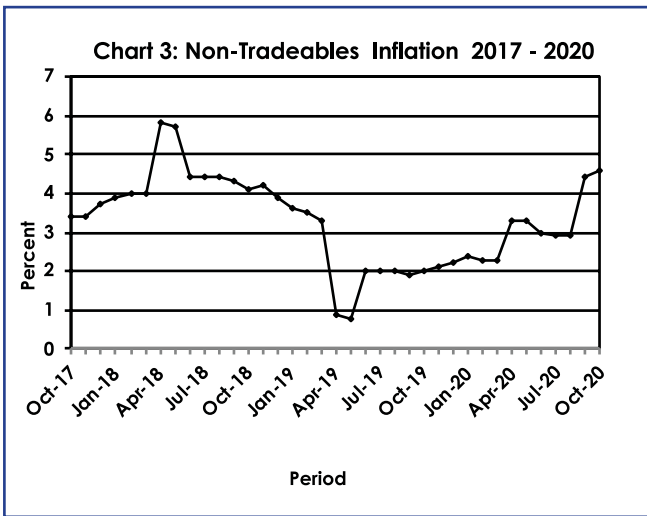
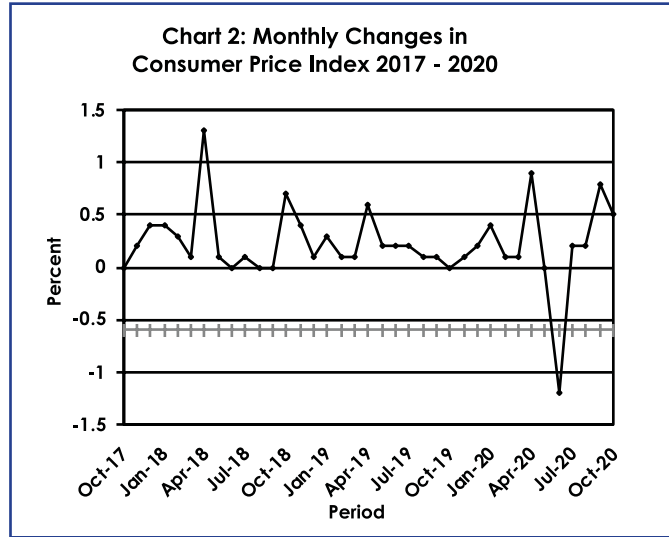
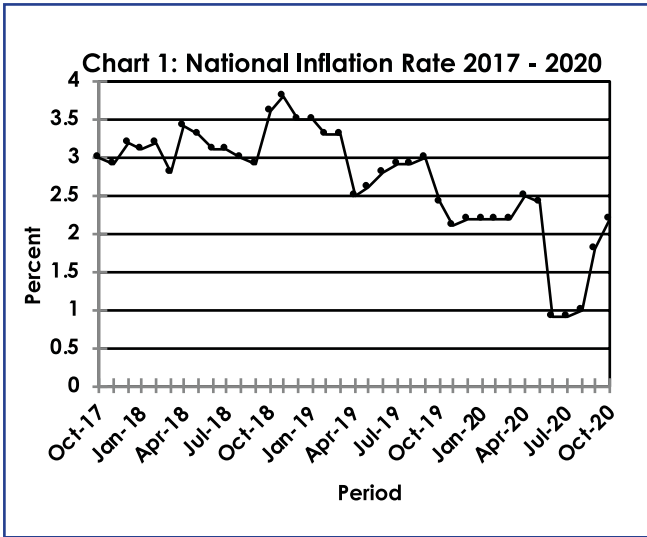
The All-Tradeables index was 102.3 in October 2020, recording a rise of 0.7 percent from 101.6 recorded in September 2020. The Imported Tradeables Index went up by 0.9 percent, from 99.1 in September to 100.0 in October 2020. The Non-Tradeables Index rose by 0.2 percent, moving from 106.4 in September to 106.6 in October. The Domestic Tradeables Index realised a rise of 0.2 percent, from 108.6 to 108.9. Refer to [Table 4](#).

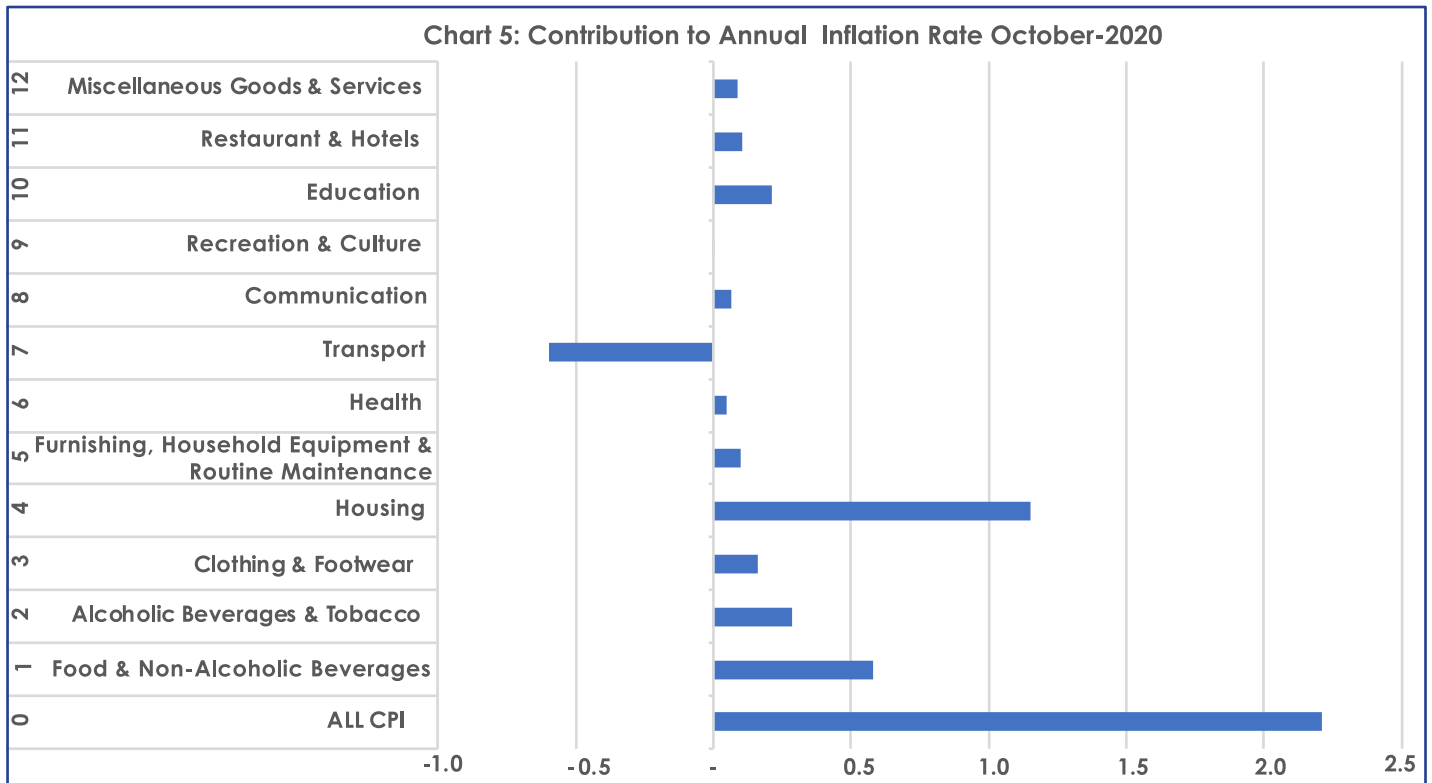
All-Tradeables inflation rate was 0.5 percent in October 2020, registering a rise of 0.6 of a percentage point on the September rate of -0.1 percent. The Imported Tradeables inflation rose by 0.8 of a percentage point, from -2.1 percent to -1.3 percent during the period under review. The Non-Tradeables inflation rate moved from 4.4 percent in September to 4.6 percent in October, recording a rise of 0.2 of a percentage point. The Domestic Tradeables inflation was 5.5 percent in October, an increase of 0.2 of a percentage point from 5.3 percent in September.

SECTION 2: CORE INFLATION

The Trimmed Mean Core Inflation rate was 2.2 percent in October, registering an increase of 0.4 of a percentage point, from 1.8 percent recorded in September 2020. The Core Inflation rate recorded a rise of 0.3 of a percentage point, from 3.1 percent in September to 3.4 percent in October 2020. Refer to **Table 5**.

CHARTS





Dr. Burton S. Mguni
Statistician General
13th November 2020

TABLES

TABLE 1: Contributions of Groups to Annual Inflation Rate

Group Code	Group Name	Aug-20	Sep-20	Oct-20
0	All Items Inflation Rate	1.0	1.8	2.2
1	Food & Non-Alcoholic Beverages	0.6	0.6	0.6
2	Alcoholic Beverages & Tobacco	0.3	0.3	0.3
3	Clothing & Footwear	0.1	0.1	0.2
4	Housing, Water, Electricity, Gas & Other Fuels	1.1	1.1	1.2
5	Furnishing, Household Equipment & Routine Maintenance	0.1	0.1	0.1
6	Health	0.0	0.1	0.1
7	Transport	-1.6	-0.9	-0.6
8	Communication	0.0	0.0	0.1
9	Recreation & Culture	-0.0	-0.0	0.0
10	Education	0.2	0.2	0.2
11	Restaurants & Hotels	0.1	0.1	0.1
12	Miscellaneous Goods & Services	0.0	0.1	0.1

TABLE 2 : CONSUMER PRICE INDEX (DECEMBER 2018 =100.0)

		Food	Alcohol and Tobacco	Clothing and Footwear	Housing	Furniture etc	Health	Transport	Communi-cation	Rec. & Culture	Education	Rest. & Hotels	Miscella-neous
Weights		13.55	4.34	5.95	17.45	4.85	3.38	23.43	6.94	2.82	4.60	3.66	9.01
2018	Jan	100.4	99.1	98.6	96.8	98.1	99.0	91.2	110.2	98.7	99.9	97.4	94.2
	Feb	100.8	99.2	98.7	96.9	98.4	99.1	91.5	110.2	99.0	99.9	97.8	94.7
	Mar	100.9	99.3	98.9	97.2	99.0	99.2	91.4	110.3	99.4	100.0	97.9	94.9
	Apr	101.0	99.2	99.3	98.6	99.1	99.2	93.5	110.3	100.0	100.0	98.4	100.0
	May	100.9	99.5	99.5	98.7	99.2	99.4	93.6	110.3	100.1	100.0	98.6	100.1
	Jun	100.7	99.7	99.6	99.2	99.5	99.4	95.0	100.2	100.1	100.0	99.0	100.2
	Jul	100.5	99.9	99.9	99.2	99.6	99.5	95.1	100.2	100.2	100.0	99.4	100.3
	Aug	100.2	100.1	99.8	99.3	99.6	99.5	95.2	100.2	100.2	100.0	99.5	100.3
	Sept	99.9	100.1	99.8	99.7	100.0	99.7	95.0	100.2	100.2	100.0	99.7	100.2
	Oct	99.8	100.2	99.7	99.7	100.0	99.8	98.4	100.2	99.8	100.0	99.7	99.8
	Nov	99.9	100.2	99.8	99.9	100.1	99.9	99.8	100.2	99.9	100.0	99.7	99.8
	Dec	100.0	100.0	100.0	100.0	100.0	100.0	100.0	100.0	100.0	100.0	100.0	100.0
2019	Jan	100.4	99.8	100.2	100.1	100.2	100.1	100.3	100.0	100.1	103.0	100.0	100.3
	Feb	100.6	99.6	100.2	100.1	100.4	100.2	100.6	100.0	100.1	103.1	100.1	100.6
	Mar	101.0	99.9	100.3	100.3	100.6	100.3	100.5	100.0	100.4	103.1	100.6	100.4
	Apr	101.4	101.2	100.4	100.3	100.7	100.3	100.7	100.0	100.2	103.1	100.8	104.9
	May	102.0	102.4	100.5	100.4	100.8	100.4	100.8	100.0	100.2	103.1	101.1	104.9
	Jun	102.0	103.2	100.7	100.9	101.6	100.5	100.6	100.1	100.2	103.1	101.3	105.0
	Jul	102.1	103.5	100.8	101.0	101.8	100.6	100.9	100.1	100.3	103.1	101.6	105.4
	Aug	102.1	103.6	101.0	101.1	101.8	100.7	101.0	100.2	100.3	103.1	101.8	105.3
	Sept	102.4	103.8	101.0	101.2	102.1	100.6	100.9	100.2	100.3	103.1	102.1	105.3
	Oct	102.3	104.1	101.1	101.3	102.2	100.7	101.0	100.3	100.0	103.1	102.3	105.2
	Nov	102.5	104.2	101.3	101.3	102.4	100.8	101.2	100.4	100.0	103.1	102.4	105.3
	Dec	103.0	104.4	101.3	101.5	102.7	100.8	101.3	100.4	99.8	103.1	102.9	105.3
2020	Jan	103.7	104.5	101.7	101.6	103.0	101.0	101.3	100.4	99.8	107.9	103.7	105.5
	Feb	104.2	104.6	101.8	101.7	103.3	101.0	101.4	100.3	100.0	108.0	103.9	105.6
	Mar	104.4	104.7	102.0	101.9	103.5	101.1	101.3	100.3	100.0	108.0	104.2	105.4
	Apr	104.6	104.8	102.1	106.5	103.7	101.5	101.3	100.3	99.7	108.0	104.4	106.1
	May	105.2	104.8	102.4	106.6	103.7	101.7	100.7	100.4	99.5	108.0	104.7	106.2
	Jun	105.7	108.7	102.9	106.7	103.9	102.0	93.9	100.5	99.5	108.0	104.8	106.2
	Jul	106.1	110.3	103.2	106.9	103.7	102.0	93.9	100.6	99.6	108.0	104.8	105.9
	Aug	106.5	110.4	103.3	107.2	104.0	102.1	94.0	100.8	99.8	108.0	104.8	105.8
	Sept	106.7	110.2	103.5	107.7	104.1	102.2	97.0	100.8	100.2	108.0	105.1	106.0
	Oct	106.7	111.0	103.9	107.9	104.4	102.2	98.4	101.3	100.2	108.0	105.3	106.2
% Change on													
Last month		0.1	0.7	0.3	0.2	0.2	0.0	1.5	0.4	(0.0)	0.0	0.2	0.2

TABLE 2: CONSUMER PRICE INDEX (Cont.)

		All Items Index	National Inflation Rate	Monthly Change	Towns & Cities Index	Urban Village Index	Rural Villages Index	Annual Inflation		
								Towns & Cities	Urban Villages	Rural
		100.0	%	%	0.38	0.41	0.21	%	%	%
2018	Jan	97.0	3.1	0.4	96.4	97.0	97.8	3.6	2.9	2.8
	Feb	97.2	3.2	0.3	96.7	97.3	98.1	3.6	2.9	2.7
	Mar	97.4	2.8	0.1	96.8	97.5	98.1	3.3	2.6	2.3
	Apr	98.7	3.4	1.3	98.4	98.7	99.1	4.2	3.1	2.7
	May	98.7	3.3	0.1	98.5	98.8	99.1	4.1	3.0	2.5
	Jun	98.8	3.1	0.0	98.6	98.8	99.0	4.0	2.7	2.3
	Jul	98.8	3.1	0.1	98.7	98.9	99.1	3.9	2.7	2.1
	Aug	98.8	3.0	(0.0)	98.6	98.9	99.1	3.8	2.6	2.0
	Sept	98.9	2.9	0.0	98.7	98.9	99.1	3.6	2.7	2.0
	Oct	99.5	3.6	0.7	99.5	99.5	99.7	4.4	3.4	2.5
	Nov	99.9	3.8	0.4	99.9	99.8	100.0	4.7	3.6	2.6
	Dec	100.0	3.5	0.1	100.0	100.0	100.0	4.2	3.5	2.5
2019	Jan	100.3	3.5	0.3	100.4	100.3	100.2	4.1	3.4	2.4
	Feb	100.5	3.3	0.1	100.6	100.5	100.3	4.0	3.2	2.3
	Mar	100.6	3.3	0.1	100.6	100.6	100.3	3.9	3.2	2.2
	Apr	101.2	2.5	0.6	101.2	101.3	100.8	2.9	2.6	1.7
	May	101.3	2.6	0.2	101.4	101.5	100.9	2.9	2.7	1.8
	Jun	101.5	2.8	0.2	101.6	101.6	101.1	3.0	2.9	2.1
	Jul	101.7	2.9	0.2	101.8	101.8	101.2	3.1	3.0	2.1
	Aug	101.7	2.9	0.1	101.8	101.9	101.3	3.2	3.1	2.2
	Sept	101.8	3.0	0.1	101.9	102.0	101.4	3.2	3.1	2.3
	Oct	101.9	2.4	0.0	102.0	102.0	101.4	2.5	2.5	1.8
	Nov	102.0	2.1	0.1	102.1	102.1	101.5	2.2	2.3	1.5
	Dec	102.2	2.2	0.2	102.3	102.3	101.6	2.3	2.3	1.6
2020	Jan	102.6	2.2	0.4	102.8	102.6	102.0	2.4	2.3	1.8
	Feb	102.7	2.2	0.1	102.9	102.8	102.1	2.3	2.3	1.9
	Mar	102.8	2.2	0.1	102.9	102.9	102.3	2.3	2.3	2.0
	Apr	103.7	2.5	0.9	103.9	103.9	103.0	2.7	2.6	2.3
	May	103.7	2.4	0.0	103.9	103.8	103.1	2.5	2.3	2.2
	Jun	102.4	0.9	(1.2)	102.6	102.7	101.5	1.0	1.1	0.4
	Jul	102.6	0.9	0.2	102.7	102.9	101.8	0.9	1.1	0.6
	Aug	102.8	1.0	0.2	102.8	103.1	102.0	1.0	1.1	0.7
	Sept	103.6	1.8	0.8	103.7	104.0	102.9	1.7	1.9	1.6
	Oct	104.1	2.2	0.5	104.2	104.4	103.4	2.2	2.4	2.0
% Change on										
Last month		0.5			0.5	0.4	0.5			

TABLE 3: NATIONAL CONSUMER PRICE GROUP AND SECTION INDICES (DECEMBER 2018=100.0)

	Group Section	Weights	This month Oct 2020	Last month Sep 2020	3 months ago Jul 2020	6 months ago Apr 2020	12 months ago Oct 2019	Percentage Change on:			
								Last month	3 months ago	6 months ago	12 months ago
1	Food & Non-Alcoholic Beverages	13.55	106.7	106.7	106.1	104.6	102.3	0.1	0.6	2.0	4.3
1.1	Bread & Cereals	4.26	110.2	109.6	107.9	105.1	103.5	0.5	2.1	4.8	6.4
1.2	Meat (Fresh, Chilled & Frozen)	2.36	110.4	110.4	111.5	110.3	102.8	0.0	(1.0)	0.1	7.4
1.3	Fish (Fresh, Chilled & Frozen)	0.18	101.1	101.5	102.5	104.2	103.9	(0.4)	(1.3)	(2.9)	(2.6)
1.4	Milk, Cheese & Milk Products	0.98	104.4	104.3	103.8	103.5	102.0	0.1	0.5	0.8	2.3
1.5	Oils & Fats	0.92	101.6	101.2	100.4	98.9	100.7	0.3	1.2	2.7	0.9
1.6	Fruits	0.78	107.4	107.7	108.6	110.3	100.8	(0.3)	(1.2)	(2.7)	6.5
1.7	Vegetables	1.08	105.2	105.7	104.2	100.2	102.9	(0.5)	0.9	5.0	2.2
1.8	Sugar, Jam, Honey, Chocolate & Confectionery	1.11	99.3	99.8	99.4	98.8	98.4	(0.5)	(0.1)	0.6	1.0
1.9	Food Not Elsewhere Classified	0.54	104.5	104.5	104.5	104.8	103.7	0.0	(0.0)	(0.2)	0.8
1.10	Coffee, Tea & Cocoa	0.73	103.5	103.8	103.4	102.5	101.7	(0.3)	0.1	0.9	1.8
1.11	Mineral Waters, Soft Drinks, Fruits & Vegetables Juices	0.62	103.1	103.2	103.5	103.0	102.3	(0.1)	(0.4)	0.0	0.7
2	Alcoholic Beverages & Tobacco	4.34	111.0	110.2	110.3	104.8	104.1	0.7	0.6	5.9	6.6
2.1	Alcoholic Beverages	3.51	111.3	110.4	110.6	104.8	104.2	0.8	0.6	6.2	6.8
2.2	Tobacco	0.82	109.7	109.6	109.0	104.8	103.9	0.1	0.7	4.7	5.6
3	Clothing & Footwear	5.95	103.9	103.5	103.2	102.1	101.1	0.3	0.6	1.7	2.7
3.1	Clothing	2.60	104.2	104.0	103.6	102.6	101.6	0.2	0.7	1.6	2.6
3.2	Other Articles of Clothing	0.72	103.6	103.3	102.8	101.8	100.9	0.3	0.8	1.7	2.6
3.3	Cleaning, Repair & Hire	0.61	106.1	105.1	104.9	103.0	101.2	0.9	1.1	2.9	4.8
3.4	Footwear	2.03	102.8	102.5	102.4	101.3	100.6	0.3	0.4	1.5	2.2
4	Housing, Water, Electricity, Gas & Other Fuels	17.45	107.9	107.7	106.9	106.5	101.3	0.2	1.0	1.3	6.6
4.1	Rent Paid by Tenants	7.78	103.4	103.4	103.0	103.0	101.9	0.0	0.3	0.3	1.5
4.2	Materials for Maintenance & Repair of Dwellings	3.83	108.5	107.4	104.9	102.9	101.9	1.0	3.4	5.4	6.5
4.3	Water Supply & Miscellaneous Services	1.96	100.0	100.0	100.0	100.0	100.0	0.0	0.0	0.0	0.0
4.4	Electricity, Gas & Other Fuels	3.89	120.5	120.4	120.1	120.2	100.0	0.0	0.3	0.2	20.4
5	Furnishing, H/H Equipment & Routine Maintenance	4.85	104.4	104.1	103.7	103.7	102.2	0.2	0.6	0.6	2.1
5.1	Furniture & Furnishing	1.35	104.4	104.2	103.9	103.2	101.6	0.2	0.4	1.2	2.7
5.2	Carpets & Other Floor Coverings	0.27	105.1	104.0	103.6	102.9	101.0	1.1	1.5	2.2	4.0
5.3	Household Textiles	0.29	105.1	105.0	104.1	102.7	101.5	0.1	1.0	2.4	3.6
5.4	Household Appliances	0.72	102.9	102.4	102.2	100.8	99.9	0.5	0.7	2.1	3.1
5.5	Glassware, Tableware & Household Utensils	0.23	104.8	104.5	103.7	103.5	102.5	0.4	1.1	1.2	2.3
5.6	Small Tools, Miscellaneous Accessories	0.04	106.7	105.5	104.4	103.2	102.5	1.2	2.2	3.4	4.1
5.7	Goods & Services for Household Maintenance	1.95	104.5	104.5	104.1	105.4	103.8	0.0	0.5	(0.8)	0.8
6	Health	3.38	102.2	102.2	102.0	101.5	100.7	0.0	0.2	0.7	1.5
6.1	Medical Products, Applications & Equipments	0.98	103.6	103.5	103.5	102.7	101.6	0.0	0.1	0.9	1.9
6.2	Out-Patient Services	0.93	102.8	102.7	102.2	101.4	100.9	0.1	0.6	1.4	2.0
6.3	Hospital Services	1.47	100.9	100.9	100.9	100.8	100.0	0.0	0.0	0.2	0.9

TABLE 3: NATIONAL CONSUMER PRICE GROUP AND SECTION INDICES (DECEMBER 2018=100.0) (Cont.)

	Group Section	Weights	This month Oct 2020	Last month Sep 2020	3 months ago Jul 2020	6 months ago Apr 2020	12 months ago Oct 2019	Percentage Change on:			
								Last month	3 months ago	6 months ago	12 months ago
7	Transport	23.43	98.4	97.0	93.9	101.3	101.0	1.5	4.9	(2.8)	(2.5)
7.1	Purchase of Vehicles	5.74	106.3	104.9	103.6	104.2	103.2	1.3	2.6	2.1	3.0
7.2	Operation of Personal Transport	12.56	89.1	87.0	86.8	100.5	100.3	2.3	2.6	(11.4)	(11.2)
7.3	Transport Services	5.13	112.5	112.6	100.2	100.1	100.1	(0.1)	12.3	12.4	12.4
8	Communication	6.94	101.3	100.8	100.6	100.3	100.3	0.4	0.7	1.0	0.9
8.1	Postal Services	0.21	113.6	100.0	100.0	100.0	100.0	13.6	13.6	13.6	13.6
8.2	Telephone & Telefax Equipment *	1.13	105.2	105.1	103.6	101.7	102.1	0.2	1.5	3.4	3.1
8.3	Telephone & Telefax Services	5.60	100.0	100.0	100.0	100.0	100.0	(0.0)	(0.0)	0.0	0.0
9	Recreation & Culture	2.82	100.2	100.2	99.6	99.7	100.0	(0.0)	0.6	0.5	0.2
9.1	Audio Visual, Photographic & Information Processing Equipment	2.10	100.0	100.0	99.4	99.5	99.7	0.0	0.6	0.5	0.3
9.2	Other Recreational Items & Equipments	0.30	102.7	102.8	101.4	101.6	101.2	(0.1)	1.2	1.1	1.5
9.3	Recreational & Cultural Services	0.31	97.4	97.4	97.3	97.4	99.8	0.0	0.1	0.1	(2.3)
9.4	Newspapers, Books & Stationary	0.11	106.2	106.2	105.9	105.5	105.0	0.0	0.3	0.7	1.1
10	Education	4.60	108.0	108.0	108.0	108.0	103.1	0.0	0.0	0.0	4.7
10.1	Pre-Primary & Primary Education	1.89	108.3	108.3	108.3	108.3	103.4	0.0	0.0	0.0	4.8
10.2	Secondary & Tertiary Education	2.70	107.8	107.8	107.7	107.7	103.0	0.0	0.0	0.0	4.7
11	Restaurants & Hotels	3.66	105.3	105.1	104.8	104.4	102.3	0.2	0.4	0.8	3.0
11.1	Restaurants, Cafes & the Like	3.02	106.1	105.7	105.0	104.5	102.2	0.4	1.1	1.5	3.9
11.2	Accommodation Services	0.64	101.2	102.1	104.0	103.9	102.7	(0.8)	(2.6)	(2.5)	(1.4)
12	Miscellaneous Goods & Services	9.01	106.2	106.0	105.9	106.1	105.2	0.2	0.3	0.1	0.9
12.1	Personal Care	2.33	101.8	102.0	102.1	103.2	100.9	(0.3)	(0.3)	(1.4)	0.9
12.2	Personal Effects Not Elsewhere Classified	0.22	101.0	100.9	101.1	100.7	99.9	0.1	(0.1)	0.3	1.1
12.3	Social Protection	0.13	108.2	108.2	108.2	108.2	101.6	0.0	0.0	0.0	6.6
12.4	Insurance	3.62	111.4	111.1	111.0	110.8	111.8	0.2	0.4	0.5	(0.4)
12.5	Financial Services	1.09	102.6	101.6	101.4	101.5	101.0	0.9	1.1	1.1	1.6
12.6	Taxes, Licences & Fees	1.61	104.0	103.9	103.7	103.7	100.7	0.1	0.3	0.3	3.4
All-Items Index		100.0	104.1	103.6	102.6	103.7	101.9	0.5	1.5	0.4	2.2

TABLE 4: CONSUMER PRICE INDEX BY TRADEABILITY (DECEMBER 2018 = 100.0)

		All Items		Non-Tradable		Domestic Tradable		Imported Tradable		All Tradable	
		Index	Inflation	Index	Inflation	Index	Inflation	Index	Inflation	Index	Inflation
Weights		100.00		42.29		15.46		42.26		57.71	
2018	Jan	97.0	3.1	96.7	3.9	99.3	0.5	96.1	3.8	97.1	2.8
	Feb	97.2	3.2	96.9	4.0	99.6	0.3	96.4	3.8	97.4	2.8
	Mar	97.4	2.8	97.1	4.0	99.8	0.1	96.5	3.1	97.5	2.2
	Apr	98.7	3.4	100.4	5.8	99.9	-0.1	96.7	3.1	97.7	2.1
	May	98.7	3.3	100.5	5.7	100.0	-0.2	96.8	3.0	97.7	2.0
	Jun	98.8	3.1	99.7	4.4	99.9	-0.2	97.5	3.6	98.2	2.4
	Jul	98.8	3.1	99.8	4.4	99.9	-0.1	97.6	3.4	98.3	2.3
	Aug	98.8	3.0	99.8	4.4	99.8	0.0	97.6	3.2	98.3	2.2
	Sept	98.9	2.9	100.0	4.3	99.8	0.6	97.5	2.9	98.2	2.1
	Oct	99.5	3.6	99.9	4.1	99.7	0.7	99.1	4.5	99.3	3.3
	Nov	99.9	3.8	99.9	4.2	99.9	1.0	99.9	4.9	99.9	3.7
	Dec	100.0	3.5	100.0	3.9	100.0	1.1	100.0	4.4	100.0	3.4
2019	Jan	100.3	3.5	100.2	3.6	100.8	1.5	100.3	4.4	100.4	3.4
	Feb	100.5	3.3	100.2	3.5	100.9	1.4	100.5	4.2	100.6	3.3
	Mar	100.6	3.3	100.3	3.3	101.3	1.5	100.6	4.2	100.7	3.3
	Apr	101.2	2.5	101.3	0.9	101.8	1.9	100.8	4.3	101.1	3.5
	May	101.3	2.6	101.3	0.8	102.3	2.4	101.0	4.4	101.4	3.7
	Jun	101.5	2.8	101.6	2.0	102.5	2.6	101.0	3.6	101.4	3.2
	Jul	101.7	2.9	101.8	2.0	102.7	2.9	101.2	3.7	101.6	3.4
	Aug	101.7	2.9	101.8	2.0	103.0	3.2	101.3	3.7	101.7	3.5
	Sept	101.8	3.0	101.9	1.9	103.2	3.4	101.2	3.9	101.7	3.6
	Oct	101.9	2.4	101.9	2.0	103.3	3.5	101.3	2.3	101.8	2.6
	Nov	102.0	2.1	102.0	2.1	103.4	3.5	101.5	1.6	102.0	2.1
	Dec	102.2	2.2	102.2	2.2	103.7	3.7	101.6	1.6	102.1	2.1
2020	Jan	102.6	2.2	102.5	2.4	105.0	4.2	101.8	1.5	102.6	2.2
	Feb	102.7	2.2	102.6	2.3	105.4	4.4	102.0	1.4	102.8	2.2
	Mar	102.8	2.2	102.6	2.3	105.6	4.2	102.0	1.4	102.9	2.1
	Apr	103.7	2.5	104.6	3.3	106.0	4.1	102.1	1.2	103.1	2.0
	May	103.7	2.4	104.7	3.3	106.6	4.2	101.8	0.8	103.1	1.7
	Jun	102.4	0.9	104.7	3.0	107.7	5.1	98.3	-2.7	100.8	-0.6
	Jul	102.6	0.9	104.7	2.9	108.1	5.2	98.5	-2.7	101.0	-0.6
	Aug	102.8	1.0	104.7	2.9	108.5	5.4	98.7	-2.5	101.3	-0.4
	Sept	103.6	1.8	106.4	4.4	108.6	5.3	99.1	-2.1	101.6	-0.1
	Oct	104.1	2.2	106.6	4.6	108.9	5.5	100.0	-1.3	102.3	0.5
% Change on											
Last month		0.5		0.2		0.2		0.9		0.7	

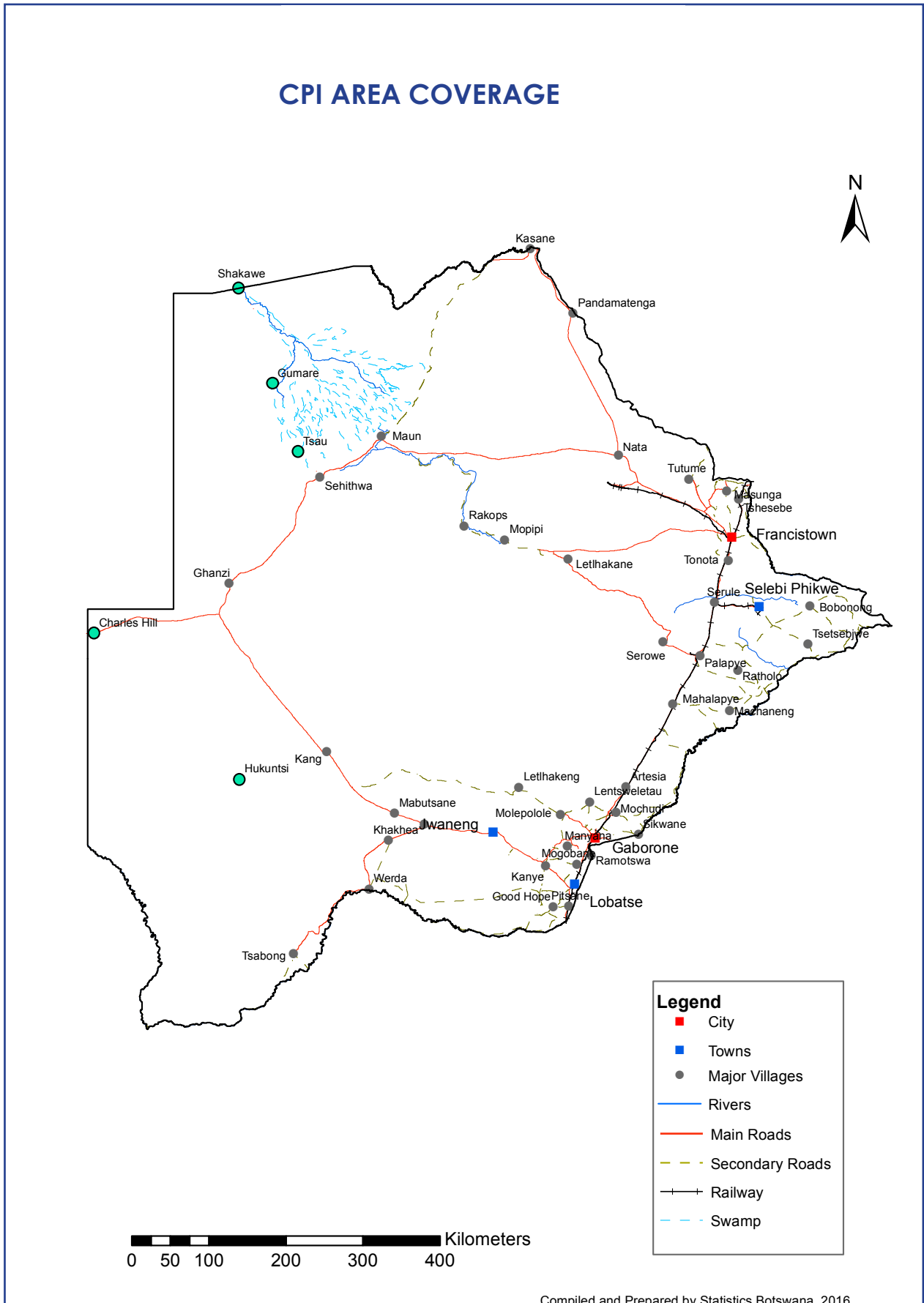
TABLE 5: CORE INFLATION RATES BY EXCLUSION AND TRIMMED MEAN

Year	Month	Consumer Price Index (Trimmed Mean) (September 2016 = 100)	Core Monthly Inflation Rate (Trimmed Mean) (percentage)	Consumer Price Index (Excluding Administered Prices) (September 2016 = 100)	Core Monthly Inflation (Excluding Administered Prices) (percentage)
2018					
	Jan	96.1	2.8	98.7	2.2
	Feb	96.4	2.9	99.0	2.2
	Mar	96.6	2.6	99.2	2.0
	Apr	97.6	3.1	99.4	1.9
	May	97.7	3.0	99.5	1.8
	Jun	98.6	3.2	99.6	1.8
	Jul	98.7	3.1	99.7	1.7
	Aug	98.7	3.0	99.7	1.6
	Sept	98.8	2.9	99.8	1.6
	Oct	99.5	3.7	99.8	1.6
	Nov	99.6	3.8	99.9	1.7
	Dec	100.0	3.6	100.0	1.8
2019					
	Jan	100.4	3.6	100.4	1.8
	Feb	100.5	3.5	100.6	1.6
	Mar	100.6	3.5	100.8	1.6
	Apr	101.3	2.6	101.0	1.7
	May	101.5	2.7	101.4	1.9
	Jun	101.2	2.5	101.6	2.0
	Jul	101.5	2.6	101.8	2.1
	Aug	101.5	2.7	101.9	2.2
	Sept	101.6	2.7	102.1	2.3
	Oct	101.6	2.1	102.1	2.3
	Nov	101.7	1.7	102.3	2.4
	Dec	101.8	1.8	102.5	2.5
2020					
	Jan	102.2	1.9	103.2	2.7
	Feb	102.4	1.9	103.4	2.7
	Mar	102.5	1.9	103.5	2.7
	Apr	102.7	1.8	103.8	2.6
	May	103.0	1.6	104.0	2.6
	Jun	102.7	1.0	104.4	2.8
	Jul	102.9	1.0	104.7	2.8
	Aug	103.1	1.1	104.9	2.9
	Sept	104.0	1.8	105.3	3.1
	Oct	104.4	2.2	105.6	3.4

TABLE 6: Average Annual Inflation (December 2018=100)

	Group	Weights	2009	2010	2011	2012	2013	2014	2015	2016	2017	2018	2019
1	Food & Non-Alcoholic Beverages	13.55	14.7	3.6	6.9	8.0	5.4	3.0	1.3	2.7	3.4	(0.5)	1.4
2	Alcoholic Beverages & Tobacco	4.34	35.2	7.1	8.4	7.6	10.3	9.0	6.1	2.5	4.5	1.1	2.8
3	Clothing & Footwear	5.95	8.4	8.0	8.9	7.5	6.3	6.0	7.6	6.5	3.2	1.8	1.3
4	Housing, Water, Electr. Gas & Other Fuels	17.45	4.8	6.4	8.4	7.7	4.3	3.9	7.1	6.3	5.4	4.1	2.1
5	Furnishing, H/H Equipment & Routine Maintenance	4.85	11.9	9.4	9.0	7.3	4.9	5.0	6.1	3.0	3.3	2.1	2.1
6	Health	3.38	5.5	2.7	4.5	5.9	5.5	8.3	6.3	3.0	2.4	1.1	1.0
7	Transport	23.43	(8.4)	12.1	13.2	10.8	7.3	1.2	(5.1)	(2.7)	1.6	7.5	6.2
8	Communication	6.94	(0.3)	1.2	(3.0)	(1.4)	0.3	0.3	0.3	0.2	0.5	(4.6)	(3.8)
9	Recreation & Culture	2.82	5.0	6.0	8.3	5.8	4.5	4.2	5.7	3.0	2.2	1.8	0.4
10	Education	4.60	3.9	5.8	10.6	6.4	4.7	7.4	6.4	3.7	4.1	5.5	3.1
11	Restaurants & Hotels	3.66	18.8	9.0	9.3	8.4	7.9	7.6	5.5	4.0	3.7	3.4	2.5
12	Miscellaneous Goods & Services	9.01	3.8	7.0	5.3	2.0	1.2	5.2	7.2	7.5	3.9	6.4	5.3
	All-Items Index	100.0	8.2	6.9	8.5	7.5	5.9	4.4	3.1	2.8	3.3	3.2	2.8

CPI AREA COVERAGE



Compiled and Prepared by Statistics Botswana, 2016

GLOSSARY

Consumer Price Index (CPI) is an index which measures price changes in goods and services with reference to a base period.

Inflation is a measurement of prices movement of goods and services in a particular country.

Domestic Tradeables refers to the goods and services which a country (Botswana) can export to other countries.

Imported Tradeables represents the goods and services which a country (Botswana) imports from other countries (trading partners).

Non-Tradeables refers to the goods and services which a country cannot either export or import to other countries.

All –Tradeables refers to the total of **Domestic** and **Imported Tradeables**.

Trimmed Mean Core Inflation- attempts to remove 8 percent (by weight) of the commodity sub-groups with the largest price changes at each of the ends of an ordered series of price changes in any given month.

Core inflation by Exclusion is a measure used to remove the volatility inherent in prices that are only adjusted periodically and not always in response to currently prevailing market forces.

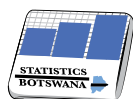


Private Bag 47
Maun
Tel: 371 5716
Fax: 686 4327

Private Bag 32
Ghanzi
Tel: 371 5723
Fax: 659 7506

Private Bag F193,
City of Francistown
Tel: 241 5848,
Fax: 241 7540

Private Bag 0024, Gaborone
Tel: 3671300
Fax: 3952201
Toll Free: 0800 600 200



STATISTICS BOTSWANA