



# Consumer Price Index

September 2021

---

Private Bag 0024, Gaborone

**Tel:** 3671300

**Fax:** 3952201

**Toll Free:** 0800 600 200

---

**E-mail:** [info@statsbots.org.bw](mailto:info@statsbots.org.bw)

**Website:** <http://www.statsbots.org.bw>



**STATISTICS BOTSWANA**

**Contact Statistician:**  
Phaladi Labobedi

## CONTENTS

SECTION 1: HEADLINE INFLATION.....	1
SECTION 2: CORE INFLATION.....	2
GLOSSARY.....	13

## CHARTS

CHART 1: NATIONAL RATE OF INFLATION .....	2
CHART 2: MONTHLY CHANGES IN THE CONSUMER PRICE INDEX.....	2
CHART 3: NON-TRADEABLES INFLATION RATE.....	2
CHART 4: TRADEABLES INFLATION RATE.....	2
CHART 5: CONTRIBUTION OF GROUPS TO ANNUAL INFLATION RATE.....	3

## TABLES

TABLE 1: CONTRIBUTION OF GROUPS TO ANNUAL INFLATION RATE.....	4
TABLE 2: CONSUMER PRICE INDEX (DECEMBER 2018 =100.0).....	5
TABLE 3: NATIONAL CONSUMER PRICE GROUP & SECTION INDICES (DECEMBER 2018 = 100.0).....	7
TABLE 4: CONSUMER PRICE INDEX BY TRADEABILITY (DECEMBER 2018 = 100.0).....	9
TABLE 5: CORE INFLATION RATES BY EXCLUSION AND TRIMMED MEAN.....	10
TABLE 6: AVERAGE ANNUAL INFLATION (DECEMBER 2018 = 100.0).....	11

## **COMMENTARY**

### **SECTION 1: HEADLINE INFLATION**

The annual inflation rate stood at 8.4 percent in September 2021, a drop of 0.4 of a percentage point on the August 2021 rate of 8.8 percent. The main contributors to the annual inflation came from the Transport (4.0 percent), Housing, Water, Electricity, Gas & Other Fuels (1.5 percent), Food & Non-Alcoholic Beverages (0.9 percent) and Miscellaneous Goods & Services (0.7 percent) groups. [Refer to Table 1 and Chart 5.](#)

The inflation rates for regions between August 2021 and September 2021 indicated that the Rural Villages inflation rate stood at 8.0 percent in September, a decrease of 0.8 of a percentage point on the August rate of 8.8 percent. The Cities & Towns inflation rate declined by 0.3 of a percentage point, from 8.7 percent in August to 8.4 percent in September, while the Urban Villages inflation rate stood at 8.6 percent in September, a drop of 0.3 of a percentage point on the August rate of 8.9 percent. [Refer to Table 2](#)

The national Consumer Price Index accelerated by 0.5 percent in September 2021, from 111.8 registered in August 2021 to 112.3. The Cities & Towns Index moved from 111.8 to 112.4 registering a rise of 0.5 percent. The Urban Villages index advanced from 112.3 in August to 112.9 in September 2021, a growth of 0.5 percent, whereas the Rural Villages index recorded an increase of 0.2 percent, from 110.9 in August to 111.1 in September. [Refer to Table 2.](#)

The group indices were generally moving at a stable pace between August and September 2021, recording changes of less than 1.0 percent, except the Education group index which recorded 1.0 percent. [Refer to Table 2.](#)

The Education group index recorded a rise of 1.0 percent, from 110.0 in August to 111.1 in September. This was due to an increase in the constituent section index of Secondary & Tertiary Education by 1.6 percent. [Refer to Table 3.](#)

The Furnishing, Household Equipment & Routine Maintenance group index moved from 108.4 to 109.3, recording a rise of 0.8 percent. This was due to the general increase in the constituent section indices, except for the Glassware, Tableware & Household Utensils section index which recorded a drop of 0.1 percent. [Refer to Table 3.](#)

The Miscellaneous Goods & Services index group registered a growth of 0.5 percent, from 113.2 in August to 113.8 in September 2021. This was attributed to an increase in the constituent section indices of the Tax, Licenses & Fees (1.1 percent), Insurance (0.6 percent) and Personal Care (0.4 percent). [Refer to Table 3.](#)

The Housing, Water, Electricity, Gas & Other Fuels index group registered a growth of 0.5 percent, from 116.0 in August to 116.6 in September 2021. The rise was owing to an increase in the section indices of Rent Paid by Tenants and Materials for Maintenance & Repair of Dwellings by 0.9 and 0.4 percent respectively. [Refer to Table 3.](#)

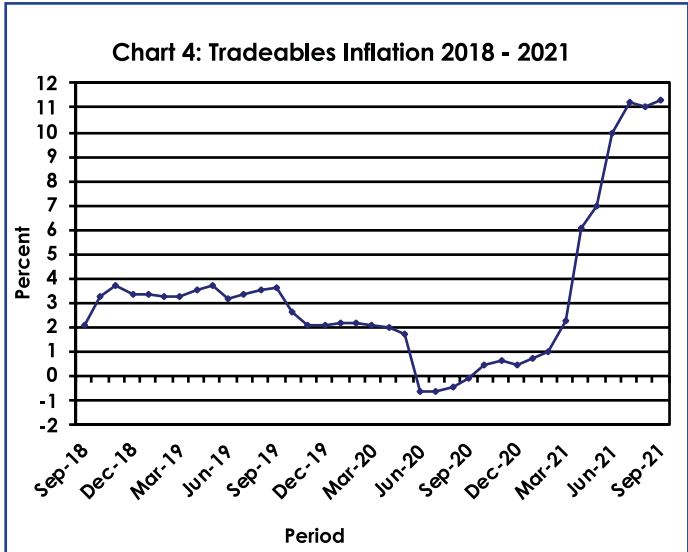
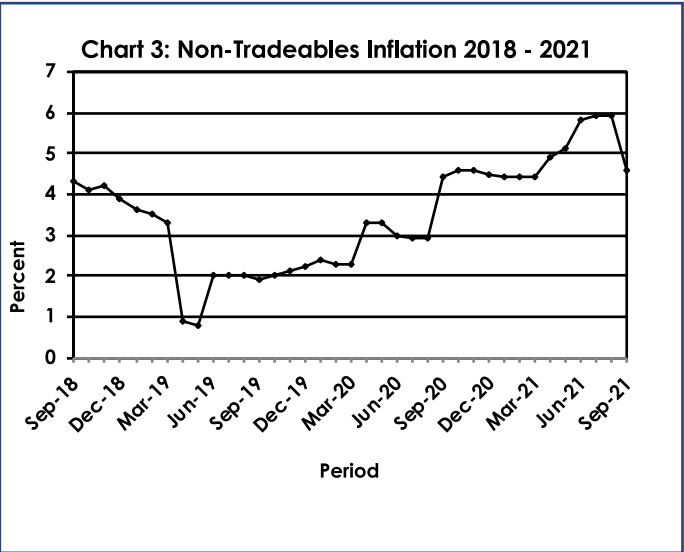
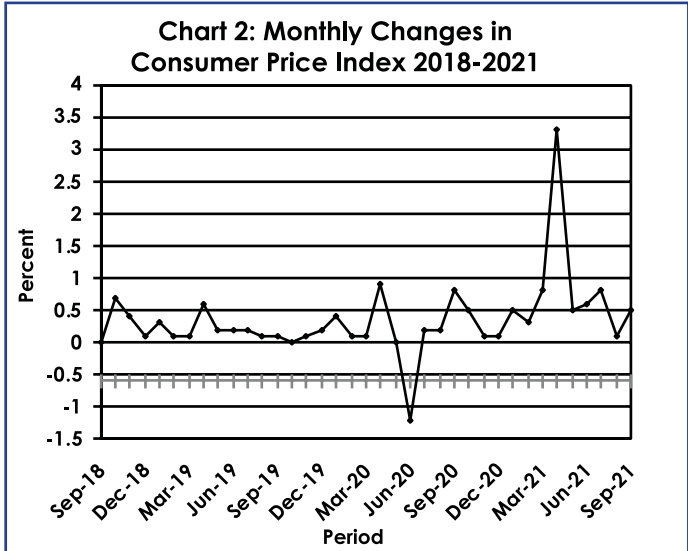
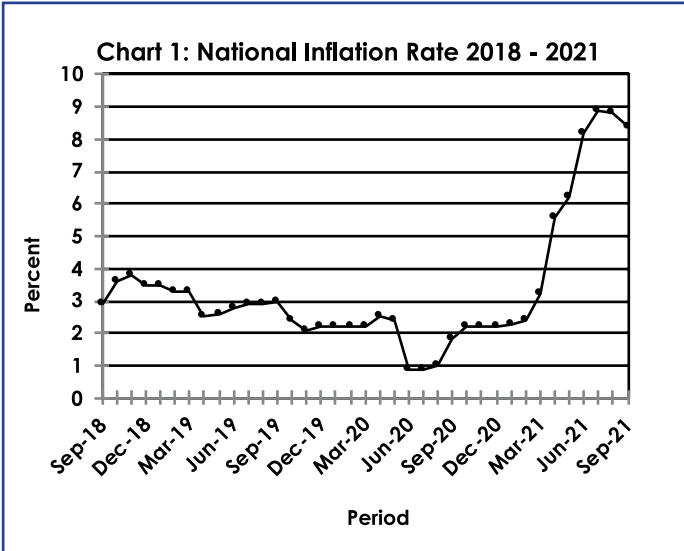
The All-Tradeables index was 113.0 in September 2021, recording a rise of 0.5 percent from 112.4 recorded in August 2021. The Domestic Tradeables Index realised an increase of 0.6 percent moving from 113.8 in August to 114.4 in September. The Imported Tradeables Index increased from 112.0 in August to 112.5 in September 2021, a rise of 0.5 percent. The Non-Tradeables Index moved from 111.0 in August to 111.4 in September, a growth of 0.4 percent. [Refer to Table 4.](#)

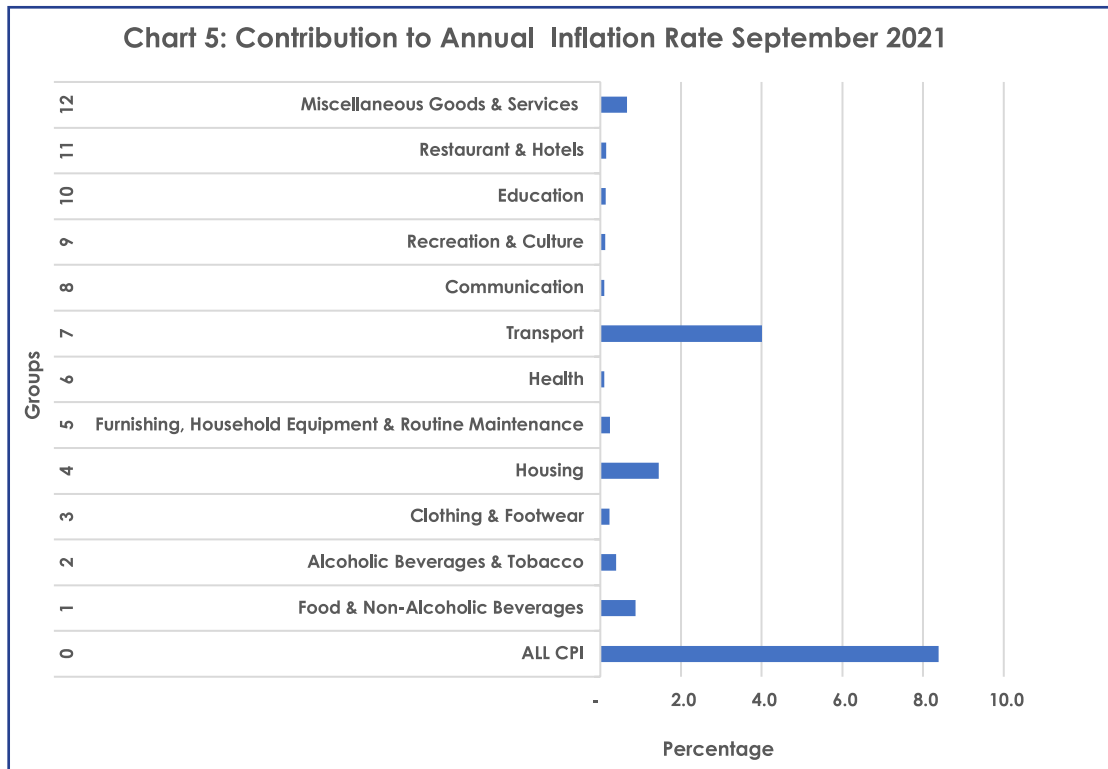
The All-Tradeables inflation rate was 11.3 percent in September 2021, recording a rise of 0.3 of a percentage point on the August rate of 11.0 percent. The Non-Tradeables inflation rate registered a drop of 1.3 percentage points, from 5.9 percent in August to 4.6 percent in September. The Domestic Tradeables inflation was 5.3 percent in September 2021, an increase of 0.5 of a percentage point from 4.8 percent registered in August 2021. The Imported Tradeables inflation went up by 0.2 of a percentage point, from 13.4 percent in August 2021 to 13.6 percent in September. [Refer to Table 4.](#)


**SECTION 2: CORE INFLATION**

The Trimmed Mean Core Inflation rate was 8.0 percent in September 2021, registering a drop of 0.3 of a percentage point, compared to 8.3 percent recorded in August 2021. , The Core Inflation rate recorded an increase of 0.3 of a percentage point, from 6.8 percent in August 2021 to 7.1 percent in September 2021. Refer to Table 5.

**CHARTS**





  
**Dr. Burton S. Mguni**  
**Statistician General**  
**15<sup>th</sup> October 2021**

**TABLES**

**TABLE 1: Contributions of Groups to Annual Inflation Rate**

Group Code	Group Name	CONTRIBUTION		
		Jul-21	Aug-21	Sep-21
<b>0</b>	<b>All Items Inflation Rate</b>	<b>8.9</b>	<b>8.8</b>	<b>8.4</b>
1	Food & Non-Alcoholic Beverages	0.9	0.9	0.9
2	Alcoholic Beverages & Tobacco	0.4	0.4	0.4
3	Clothing & Footwear	0.2	0.2	0.2
4	Housing, Water, Electricity, Gas & Other Fuels	1.5	1.4	1.5
5	Furnishing, Household Equipment & Routine Maintenance	0.2	0.2	0.2
6	Health	0.1	0.1	0.1
7	Transport	4.6	4.6	4.0
8	Communication	0.1	0.1	0.1
9	Recreation & Culture	0.1	0.1	0.1
10	Education	0.1	0.1	0.1
11	Restaurants & Hotels	0.1	0.1	0.1
12	Miscellaneous Goods & Services	0.6	0.6	0.7

**Note:** Figures may vary slightly due to the rounding -up

TABLE 2 : CONSUMER PRICE INDEX (DECEMBER 2018 =100.0)

		Food	Alcohol and Tobacco	Clothing and Footwear	Housing	Furniture etc	Health	Transport	Communi-cation	Rec. & Culture	Education	Rest. & Hotels	Miscella-neous
Weights		13.55	4.34	5.95	17.45	4.85	3.38	23.43	6.94	2.82	4.60	3.66	9.01
<b>2019</b>	Jan	100.4	99.8	100.2	100.1	100.2	100.1	100.3	100.0	100.1	103.0	100.0	100.3
	Feb	100.6	99.6	100.2	100.1	100.4	100.2	100.6	100.0	100.1	103.1	100.1	100.6
	Mar	101.0	99.9	100.3	100.3	100.6	100.3	100.5	100.0	100.4	103.1	100.6	100.4
	Apr	101.4	101.2	100.4	100.3	100.7	100.3	100.7	100.0	100.2	103.1	100.8	104.9
	May	102.0	102.4	100.5	100.4	100.8	100.4	100.8	100.0	100.2	103.1	101.1	104.9
	Jun	102.0	103.2	100.7	100.9	101.6	100.5	100.6	100.1	100.2	103.1	101.3	105.0
	Jul	102.1	103.5	100.8	101.0	101.8	100.6	100.9	100.1	100.3	103.1	101.6	105.4
	Aug	102.1	103.6	101.0	101.1	101.8	100.7	101.0	100.2	100.3	103.1	101.8	105.3
	Sept	102.4	103.8	101.0	101.2	102.1	100.6	100.9	100.2	100.3	103.1	102.1	105.3
	Oct	102.3	104.1	101.1	101.3	102.2	100.7	101.0	100.3	100.0	103.1	102.3	105.2
	Nov	102.5	104.2	101.3	101.3	102.4	100.8	101.2	100.4	100.0	103.1	102.4	105.3
	Dec	103.0	104.4	101.3	101.5	102.7	100.8	101.3	100.4	99.8	103.1	102.9	105.3
<b>2020</b>	Jan	103.7	104.5	101.7	101.6	103.0	101.0	101.3	100.4	99.8	107.9	103.7	105.5
	Feb	104.2	104.6	101.8	101.7	103.3	101.0	101.4	100.3	100.0	108.0	103.9	105.6
	Mar	104.4	104.7	102.0	101.9	103.5	101.1	101.3	100.3	100.0	108.0	104.2	105.4
	Apr	104.6	104.8	102.1	106.5	103.7	101.5	101.3	100.3	99.7	108.0	104.4	106.1
	May	105.2	104.8	102.4	106.6	103.7	101.7	100.7	100.4	99.5	108.0	104.7	106.2
	Jun	105.7	108.7	102.9	106.7	103.9	102.0	93.9	100.5	99.5	108.0	104.8	106.2
	Jul	106.1	110.3	103.2	106.9	103.7	102.0	93.9	100.6	99.6	108.0	104.8	105.9
	Aug	106.5	110.4	103.3	107.2	104.0	102.1	94.0	100.8	99.8	108.0	104.8	105.8
	Sept	106.7	110.2	103.5	107.7	104.1	102.2	97.0	100.8	100.2	108.0	105.1	106.0
	Oct	106.7	111.0	103.9	107.9	104.4	102.2	98.4	101.3	100.2	108.0	105.3	106.2
	Nov	106.9	111.0	103.9	108.2	104.5	102.3	98.6	101.3	100.5	108.0	105.5	106.3
	Dec	106.7	111.3	104.1	108.5	104.7	102.4	98.7	101.1	100.7	108.0	105.3	106.4
<b>2021</b>	Jan	107.2	111.3	104.4	108.7	105.1	103.2	99.6	101.1	101.1	109.9	105.2	106.8
	Feb	108.0	111.5	104.6	109.0	105.2	103.2	100.0	101.1	101.6	109.9	105.5	106.9
	Mar	108.6	112.0	104.9	109.2	105.6	103.5	102.8	101.1	101.8	109.9	106.0	106.9
	Apr	111.7	117.1	105.7	113.3	106.9	104.3	108.8	101.8	103.1	109.9	107.0	112.2
	May	112.3	118.4	106.4	113.6	107.2	104.9	109.7	102.1	103.7	109.9	107.9	112.5
	Jun	112.9	118.8	106.8	115.8	107.8	104.9	110.2	102.2	104.0	110.0	108.5	112.6
	Jul	113.0	119.3	106.9	115.9	108.2	104.8	113.5	102.3	104.0	110.0	108.2	112.9
	Aug	113.2	119.5	107.0	116.0	108.4	104.9	113.4	102.3	104.1	110.0	108.7	113.2
	Sept	113.5	120.1	107.4	116.6	109.3	105.0	114.0	102.3	104.6	111.1	109.1	113.8
<b>% Change on Last month</b>		<b>0.2</b>	<b>0.5</b>	<b>0.4</b>	<b>0.5</b>	<b>0.8</b>	<b>0.2</b>	<b>0.5</b>	<b>0.0</b>	<b>0.4</b>	<b>1.0</b>	<b>0.4</b>	<b>0.5</b>

Note: Figures may vary slightly due to the rounding -up

**TABLE 2: CONSUMER PRICE INDEX (Cont.)**

		All Items Index	National Inflation Rate	Monthly Change	Towns & Cities Index	Urban Village Index	Rural Villages Index	Annual Inflation		
								Towns & Cities	Urban Villages	Rural
		100.0	%	%	0.38	0.41	0.21	%	%	%
<b>2019</b>	Jan	100.3	3.5	0.3	100.4	100.3	100.2	4.1	3.4	2.4
	Feb	100.5	3.3	0.1	100.6	100.5	100.3	4.0	3.2	2.3
	Mar	100.6	3.3	0.1	100.6	100.6	100.3	3.9	3.2	2.2
	Apr	101.2	2.5	0.6	101.2	101.3	100.8	2.9	2.6	1.7
	May	101.3	2.6	0.2	101.4	101.5	100.9	2.9	2.7	1.8
	Jun	101.5	2.8	0.2	101.6	101.6	101.1	3.0	2.9	2.1
	Jul	101.7	2.9	0.2	101.8	101.8	101.2	3.1	3.0	2.1
	Aug	101.7	2.9	0.1	101.8	101.9	101.3	3.2	3.1	2.2
	Sept	101.8	3.0	0.1	101.9	102.0	101.4	3.2	3.1	2.3
	Oct	101.9	2.4	0.0	102.0	102.0	101.4	2.5	2.5	1.8
	Nov	102.0	2.1	0.1	102.1	102.1	101.5	2.2	2.3	1.5
	Dec	102.2	2.2	0.2	102.3	102.3	101.6	2.3	2.3	1.6
<b>2020</b>	Jan	102.6	2.2	0.4	102.8	102.6	102.0	2.4	2.3	1.8
	Feb	102.7	2.2	0.1	102.9	102.8	102.1	2.3	2.3	1.9
	Mar	102.8	2.2	0.1	102.9	102.9	102.3	2.3	2.3	2.0
	Apr	103.7	2.5	0.9	103.9	103.9	103.0	2.7	2.6	2.3
	May	103.7	2.4	0.0	103.9	103.8	103.1	2.5	2.3	2.2
	Jun	102.4	0.9	(1.2)	102.6	102.7	101.5	1.0	1.1	0.4
	Jul	102.6	0.9	0.2	102.7	102.9	101.8	0.9	1.1	0.6
	Aug	102.8	1.0	0.2	102.8	103.1	102.0	1.0	1.1	0.7
	Sept	103.6	1.8	0.8	103.7	104.0	102.9	1.7	1.9	1.6
	Oct	104.1	2.2	0.5	104.2	104.4	103.4	2.2	2.4	2.0
	Nov	104.3	2.2	0.1	104.4	104.6	103.6	2.2	2.4	2.0
	Dec	104.4	2.2	0.1	104.4	104.7	103.7	2.1	2.4	2.0
<b>2021</b>	Jan	104.9	2.3	0.5	104.9	105.3	104.2	2.0	2.6	2.1
	Feb	105.2	2.4	0.3	105.1	105.6	104.5	2.1	2.7	2.3
	Mar	106.0	3.2	0.8	105.9	106.5	105.4	2.9	3.5	3.1
	Apr	109.6	5.6	3.3	109.7	110.0	108.4	5.5	5.9	5.2
	May	110.1	6.2	0.5	110.3	110.6	109.0	6.1	6.5	5.7
	Jun	110.8	8.2	0.6	111.0	111.3	109.6	8.2	8.3	7.9
	Jul	111.7	8.9	0.8	111.7	112.1	110.8	8.8	9.0	8.8
	Aug	111.8	8.8	0.1	111.8	112.3	110.9	8.7	8.9	8.8
	Sept	112.3	8.4	0.5	112.4	112.9	111.1	8.4	8.6	8.0
<b>% Change on last month</b>		<b>0.5</b>			<b>0.5</b>	<b>0.5</b>	<b>0.2</b>			

Note: Figures may vary slightly due to the rounding -up



**TABLE 3: NATIONAL CONSUMER PRICE GROUP AND SECTION INDICES (DECEMBER 2018=100.0)**

	Group Section	Weights	This month Sep 2021	Last month Aug 2021	3 months ago Jun 2021	6 months ago Mar 2021	12 months ago Sep 2020	Percentage Change on:			
								Last month	3 months ago	6 months ago	12 months ago
<b>1</b>	<b>Food &amp; Non-Alcoholic Beverages</b>	<b>13.55</b>	<b>113.5</b>	<b>113.2</b>	<b>112.9</b>	<b>108.6</b>	<b>106.7</b>	<b>0.2</b>	<b>0.5</b>	<b>4.5</b>	<b>6.4</b>
1.1	Bread & Cereals	4.26	116.9	116.6	116.8	113.5	109.6	0.3	0.1	3.0	6.6
1.2	Meat (Fresh, Chilled & Frozen)	2.36	116.4	116.2	116.5	113.2	110.4	0.1	(0.1)	2.8	5.4
1.3	Fish (Fresh, Chilled & Frozen)	0.18	112.3	112.4	110.0	103.3	101.5	(0.1)	2.1	8.7	10.6
1.4	Milk, Cheese & Milk Products	0.98	109.0	108.5	107.6	105.6	104.3	0.4	1.3	3.2	4.5
1.5	Oils & Fats	0.92	125.6	124.3	116.0	104.0	101.2	1.1	8.3	20.8	24.1
1.6	Fruits	0.78	112.2	112.1	113.7	110.8	107.7	0.1	(1.4)	1.3	4.1
1.7	Vegetables	1.08	105.3	106.3	109.7	102.1	105.7	(1.0)	(4.0)	3.1	(0.4)
1.8	Sugar, Jam, Honey, Chocolate & Confectionery	1.11	101.5	101.3	100.9	98.7	99.8	0.2	0.6	2.8	1.6
1.9	Food Not Elsewhere Classified	0.54	115.0	114.1	111.1	104.4	104.5	0.8	3.5	10.2	10.0
1.10	Coffee, Tea & Cocoa	0.73	110.7	110.2	110.1	105.5	103.8	0.4	0.5	4.9	6.6
1.11	Mineral Waters, Soft Drinks, Fruits & Vegetables Juices	0.62	107.8	107.8	108.4	103.4	103.2	(0.0)	(0.6)	4.3	4.4
<b>2</b>	<b>Alcoholic Beverages &amp; Tobacco</b>	<b>4.34</b>	<b>120.1</b>	<b>119.5</b>	<b>118.8</b>	<b>112.0</b>	<b>110.2</b>	<b>0.5</b>	<b>1.1</b>	<b>7.2</b>	<b>9.0</b>
2.1	Alcoholic Beverages	3.51	120.8	120.0	119.4	112.1	110.4	0.7	1.2	7.8	9.4
2.2	Tobacco	0.82	117.2	117.2	116.5	111.9	109.6	0.0	0.6	4.7	7.0
<b>3</b>	<b>Clothing &amp; Footwear</b>	<b>5.95</b>	<b>107.4</b>	<b>107.0</b>	<b>106.8</b>	<b>104.9</b>	<b>103.5</b>	<b>0.4</b>	<b>0.6</b>	<b>2.4</b>	<b>3.7</b>
3.1	Clothing	2.60	107.8	107.5	107.3	105.5	104.0	0.3	0.4	2.2	3.6
3.2	Other Articles of Clothing	0.72	106.2	105.8	105.3	104.5	103.3	0.4	0.8	1.6	2.8
3.3	Cleaning, Repair & Hire	0.61	111.8	111.3	111.1	106.4	105.1	0.5	0.7	5.1	6.5
3.4	Footwear	2.03	105.9	105.4	105.3	103.7	102.5	0.5	0.6	2.1	3.4
<b>4</b>	<b>Housing, Water, Electricity, Gas &amp; Other Fuels</b>	<b>17.45</b>	<b>116.6</b>	<b>116.0</b>	<b>115.8</b>	<b>109.2</b>	<b>107.7</b>	<b>0.5</b>	<b>0.7</b>	<b>6.8</b>	<b>8.3</b>
4.1	Rent Paid by Tenants	7.78	110.9	109.9	109.9	103.7	103.4	0.9	0.9	6.9	7.2
4.2	Materials for Maintenance & Repair of Dwellings	3.83	120.2	119.7	118.8	113.5	107.4	0.4	1.1	5.9	11.9
4.3	Water Supply & Miscellaneous Services	1.96	112.7	112.7	112.7	100.0	100.0	0.0	0.0	12.7	12.7
4.4	Electricity, Gas & Other Fuels	3.89	126.5	126.4	126.3	120.5	120.4	0.1	0.2	5.0	5.0
<b>5</b>	<b>Furnishing, H/H Equipment &amp; Routine Maintenance</b>	<b>4.85</b>	<b>109.3</b>	<b>108.4</b>	<b>107.8</b>	<b>105.6</b>	<b>104.1</b>	<b>0.8</b>	<b>1.4</b>	<b>3.5</b>	<b>5.0</b>
5.1	Furniture & Furnishing	1.35	108.6	107.9	107.3	105.6	104.2	0.7	1.2	2.9	4.2
5.2	Carpets & Other Floor Coverings	0.27	110.0	109.9	109.1	106.0	104.0	0.1	0.8	3.7	5.8
5.3	Household Textiles	0.29	110.1	109.3	108.4	106.1	105.0	0.8	1.6	3.8	4.9
5.4	Household Appliances	0.72	110.0	108.4	107.7	105.0	102.4	1.5	2.1	4.7	7.4
5.5	Glassware, Tableware & Household Utensils	0.23	110.4	110.5	109.5	106.2	104.5	(0.1)	0.9	4.0	5.7
5.6	Small Tools, Miscellaneous Accessories	0.04	114.9	113.9	112.9	108.4	105.5	0.9	1.7	6.0	8.9
5.7	Goods & Services for Household Maintenance	1.95	109.0	108.2	107.6	105.5	104.5	0.8	1.4	3.4	4.3
<b>6</b>	<b>Health</b>	<b>3.38</b>	<b>105.0</b>	<b>104.9</b>	<b>104.9</b>	<b>103.5</b>	<b>102.2</b>	<b>0.2</b>	<b>0.1</b>	<b>1.5</b>	<b>2.8</b>
6.1	Medical Products, Applications & Equipments	0.98	107.7	107.4	107.8	104.8	103.5	0.3	(0.1)	2.8	4.0
6.2	Out-Patient Services	0.93	106.1	105.8	105.5	104.6	102.7	0.3	0.5	1.5	3.3
6.3	Hospital Services	1.47	102.6	102.6	102.6	102.0	100.9	0.0	0.0	0.7	1.7

**TABLE 3: NATIONAL CONSUMER PRICE GROUP AND SECTION INDICES (DECEMBER 2018=100.0) (Cont.)**

	Group Section	Weights	This month Sep 2021	Last month Aug 2021	3 months ago Jun 2021	6 months ago Mar 2021	12 months ago Sep 2020	Percentage Change on:				
								Last month	3 months ago	6 months ago	12 months ago	
<b>7</b>	<b>Transport</b>	<b>23.43</b>	<b>114.0</b>	<b>113.4</b>	<b>110.2</b>	<b>102.8</b>	<b>97.0</b>	<b>0.5</b>	<b>3.5</b>	<b>11.0</b>	<b>17.5</b>	
7.1	Purchase of Vehicles	5.74	128.1	125.9	123.8	113.2	104.9	1.7	3.4	13.1	22.0	
7.2	Operation of Personal Transport	12.56	108.4	108.2	103.1	94.1	87.0	0.2	5.1	15.2	24.5	
7.3	Transport Services	5.13	112.2	112.2	112.2	112.3	112.6	0.0	0.0	(0.1)	(0.4)	
<b>8</b>	<b>Communication</b>	<b>6.94</b>	<b>102.3</b>	<b>102.3</b>	<b>102.2</b>	<b>101.1</b>	<b>100.8</b>	<b>0.0</b>	<b>0.2</b>	<b>1.2</b>	<b>1.5</b>	
8.1	Postal Services	0.21	113.6	113.6	113.6	113.6	100.0	0.0	0.0	0.0	13.6	
8.2	Telephone & Telefax Equipment *	1.13	107.2	107.0	106.3	104.3	105.1	0.2	0.9	2.8	2.0	
8.3	Telephone & Telefax Services	5.60	100.9	100.9	100.9	100.0	100.0	0.0	0.0	0.9	0.9	
<b>9</b>	<b>Recreation &amp; Culture</b>	<b>2.82</b>	<b>104.6</b>	<b>104.1</b>	<b>104.0</b>	<b>101.8</b>	<b>100.2</b>	<b>0.4</b>	<b>0.6</b>	<b>2.7</b>	<b>4.3</b>	
9.1	Audio Visual, Photographic & Information Processing Equipment	2.10	104.6	104.1	103.9	101.9	100.0	0.5	0.7	2.7	4.7	
9.2	Other Recreational Items & Equipments	0.30	105.1	104.9	104.7	103.8	102.8	0.3	0.4	1.3	2.3	
9.3	Recreational & Cultural Services	0.31	101.9	101.9	101.9	97.7	97.4	0.0	0.0	4.4	4.6	
9.4	Newspapers, Books & Stationary	0.11	109.0	108.9	108.5	106.5	106.2	0.1	0.5	2.4	2.7	
<b>10</b>	<b>Education</b>	<b>4.60</b>	<b>111.1</b>	<b>110.0</b>	<b>110.0</b>	<b>109.9</b>	<b>108.0</b>	<b>1.0</b>	<b>1.0</b>	<b>1.1</b>	<b>2.8</b>	
10.1	Pre-Primary & Primary Education	1.89	111.3	111.3	111.3	111.1	108.3	0.0	0.0	0.2	2.7	
10.2	Secondary & Tertiary Education	2.70	110.9	109.1	109.1	109.0	107.8	1.6	1.7	1.8	2.9	
<b>11</b>	<b>Restaurants &amp; Hotels</b>	<b>3.66</b>	<b>109.1</b>	<b>108.7</b>	<b>108.5</b>	<b>106.0</b>	<b>105.1</b>	<b>0.4</b>	<b>0.6</b>	<b>2.9</b>	<b>3.8</b>	
11.1	Restaurants, Cafes & the Like	3.02	111.6	111.1	110.8	108.0	105.7	0.5	0.7	3.3	5.5	
11.2	Accommodation Services	0.64	97.4	97.5	97.5	96.6	102.1	(0.0)	(0.1)	0.8	(4.6)	
<b>12</b>	<b>Miscellaneous Goods &amp; Services</b>	<b>9.01</b>	<b>113.8</b>	<b>113.2</b>	<b>112.6</b>	<b>106.9</b>	<b>106.0</b>	<b>0.5</b>	<b>1.1</b>	<b>6.4</b>	<b>7.3</b>	
12.1	Personal Care	2.33	108.5	108.2	106.5	102.8	102.0	0.4	1.9	5.6	6.4	
12.2	Personal Effects Not Elsewhere Classified	0.22	101.3	101.3	101.5	101.4	100.9	0.0	(0.1)	(0.1)	0.4	
12.3	Social Protection	0.13	109.7	109.7	109.7	109.7	108.2	0.0	0.0	0.0	1.4	
12.4	Insurance	3.62	120.4	119.7	119.7	111.8	111.1	0.6	0.6	7.7	8.4	
12.5	Financial Services	1.09	114.9	114.9	114.0	103.4	101.6	0.0	0.8	11.2	13.1	
12.6	Taxes, Licences & Fees	1.61	107.9	106.7	106.3	104.8	103.9	1.1	1.6	2.9	3.8	
	<b>All-Items Index</b>	<b>100.0</b>	<b>112.3</b>	<b>111.8</b>	<b>110.8</b>	<b>106.0</b>	<b>103.6</b>	<b>0.5</b>	<b>1.3</b>	<b>5.9</b>	<b>8.4</b>	

Note: Figures may vary slightly due to the rounding -up

**TABLE 4: CONSUMER PRICE INDEX BY TRADEABILITY (DECEMBER 2018 = 100.0)**

		All Items		Non-Tradable		Domestic Tradable		Imported Tradable		All Tradable	
		Index	Inflation	Index	Inflation	Index	Inflation	Index	Inflation	Index	Inflation
<b>Weights</b>		<b>100.00</b>		<b>42.29</b>		<b>15.46</b>		<b>42.26</b>		<b>57.71</b>	
<b>2019</b>	Jan	100.3	<b>3.5</b>	100.2	<b>3.6</b>	100.8	<b>1.5</b>	100.3	<b>4.4</b>	100.4	<b>3.4</b>
	Feb	100.5	<b>3.3</b>	100.2	<b>3.5</b>	100.9	<b>1.4</b>	100.5	<b>4.2</b>	100.6	<b>3.3</b>
	Mar	100.6	<b>3.3</b>	100.3	<b>3.3</b>	101.3	<b>1.5</b>	100.6	<b>4.2</b>	100.7	<b>3.3</b>
	Apr	101.2	<b>2.5</b>	101.3	<b>0.9</b>	101.8	<b>1.9</b>	100.8	<b>4.3</b>	101.1	<b>3.5</b>
	May	101.3	<b>2.6</b>	101.3	<b>0.8</b>	102.3	<b>2.4</b>	101.0	<b>4.4</b>	101.4	<b>3.7</b>
	Jun	101.5	<b>2.8</b>	101.6	<b>2.0</b>	102.5	<b>2.6</b>	101.0	<b>3.6</b>	101.4	<b>3.2</b>
	Jul	101.7	<b>2.9</b>	101.8	<b>2.0</b>	102.7	<b>2.9</b>	101.2	<b>3.7</b>	101.6	<b>3.4</b>
	Aug	101.7	<b>2.9</b>	101.8	<b>2.0</b>	103.0	<b>3.2</b>	101.3	<b>3.7</b>	101.7	<b>3.5</b>
	Sept	101.8	<b>3.0</b>	101.9	<b>1.9</b>	103.2	<b>3.4</b>	101.2	<b>3.9</b>	101.7	<b>3.6</b>
	Oct	101.9	<b>2.4</b>	101.9	<b>2.0</b>	103.3	<b>3.5</b>	101.3	<b>2.3</b>	101.8	<b>2.6</b>
	Nov	102.0	<b>2.1</b>	102.0	<b>2.1</b>	103.4	<b>3.5</b>	101.5	<b>1.6</b>	102.0	<b>2.1</b>
	Dec	102.2	<b>2.2</b>	102.2	<b>2.2</b>	103.7	<b>3.7</b>	101.6	<b>1.6</b>	102.1	<b>2.1</b>
<b>2020</b>	Jan	102.6	<b>2.2</b>	102.5	<b>2.4</b>	105.0	<b>4.2</b>	101.8	<b>1.5</b>	102.6	<b>2.2</b>
	Feb	102.7	<b>2.2</b>	102.6	<b>2.3</b>	105.4	<b>4.4</b>	102.0	<b>1.4</b>	102.8	<b>2.2</b>
	Mar	102.8	<b>2.2</b>	102.6	<b>2.3</b>	105.6	<b>4.2</b>	102.0	<b>1.4</b>	102.9	<b>2.1</b>
	Apr	103.7	<b>2.5</b>	104.6	<b>3.3</b>	106.0	<b>4.1</b>	102.1	<b>1.2</b>	103.1	<b>2.0</b>
	May	103.7	<b>2.4</b>	104.7	<b>3.3</b>	106.6	<b>4.2</b>	101.8	<b>0.8</b>	103.1	<b>1.7</b>
	Jun	102.4	<b>0.9</b>	104.7	<b>3.0</b>	107.7	<b>5.1</b>	98.3	<b>-2.7</b>	100.8	<b>-0.6</b>
	Jul	102.6	<b>0.9</b>	104.7	<b>2.9</b>	108.1	<b>5.2</b>	98.5	<b>-2.7</b>	101.0	<b>-0.6</b>
	Aug	102.8	<b>1.0</b>	104.7	<b>2.9</b>	108.5	<b>5.4</b>	98.7	<b>-2.5</b>	101.3	<b>-0.4</b>
	Sept	103.6	<b>1.8</b>	106.4	<b>4.4</b>	108.6	<b>5.3</b>	99.1	<b>-2.1</b>	101.6	<b>-0.1</b>
	Oct	104.1	<b>2.2</b>	106.6	<b>4.6</b>	108.9	<b>5.5</b>	100.0	<b>-1.3</b>	102.3	<b>0.5</b>
	Nov	104.3	<b>2.2</b>	106.7	<b>4.6</b>	109.1	<b>5.5</b>	100.2	<b>-1.3</b>	102.6	<b>0.6</b>
	Dec	104.4	<b>2.2</b>	106.8	<b>4.5</b>	109.2	<b>5.4</b>	100.3	<b>-1.3</b>	102.6	<b>0.5</b>
<b>2021</b>	Jan	104.9	<b>2.3</b>	107.0	<b>4.4</b>	109.8	<b>4.6</b>	101.0	<b>-0.7</b>	103.4	<b>0.7</b>
	Feb	105.2	<b>2.4</b>	107.1	<b>4.4</b>	110.5	<b>4.8</b>	101.5	<b>-0.5</b>	103.8	<b>1.0</b>
	Mar	106.0	<b>3.2</b>	107.1	<b>4.4</b>	110.8	<b>5.0</b>	103.3	<b>1.3</b>	105.3	<b>2.3</b>
	Apr	109.6	<b>5.6</b>	109.8	<b>4.9</b>	113.7	<b>7.2</b>	107.9	<b>5.7</b>	109.4	<b>6.1</b>
	May	110.1	<b>6.2</b>	110.0	<b>5.1</b>	114.0	<b>6.9</b>	108.9	<b>7.0</b>	110.3	<b>7.0</b>
	Jun	110.8	<b>8.2</b>	110.8	<b>5.8</b>	114.0	<b>5.9</b>	109.7	<b>11.6</b>	110.8	<b>10.0</b>
	Jul	111.7	<b>8.9</b>	110.9	<b>5.9</b>	113.6	<b>5.1</b>	111.9	<b>13.6</b>	112.3	<b>11.2</b>
	Aug	111.8	<b>8.8</b>	111.0	<b>5.9</b>	113.8	<b>4.8</b>	112.0	<b>13.4</b>	112.4	<b>11.0</b>
	Sept	112.3	<b>8.4</b>	111.4	<b>4.6</b>	114.4	<b>5.3</b>	112.5	<b>13.6</b>	113.0	<b>11.3</b>
<b>% Change on last month</b>		<b>0.5</b>		<b>0.4</b>		<b>0.6</b>		<b>0.5</b>		<b>0.5</b>	

Note: Figures may vary slightly due to the rounding -up

**TABLE 5: CORE INFLATION RATES BY EXCLUSION AND TRIMMED MEAN**

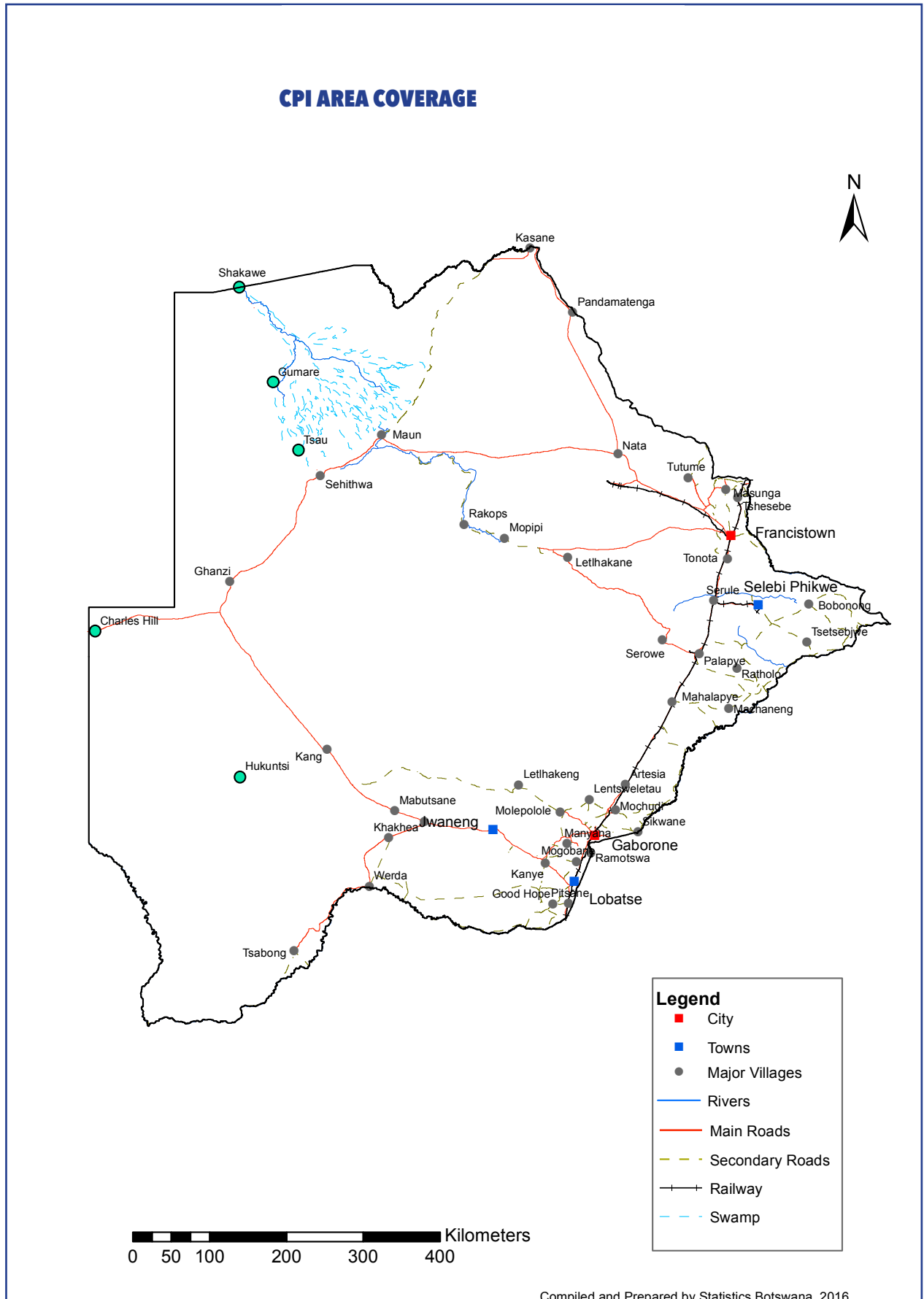
Year	Month	Consumer Price Index (Trimmed Mean) (September 2016 = 100)	Core Monthly Inflation Rate (Trimmed Mean) (percentage)	Consumer Price Index (Excluding Administered Prices) (September 2016 = 100)	Core Monthly Inflation (Excluding Administered Prices) (percentage)
<b>2019</b>					
	Jan	100.4	<b>3.6</b>	100.4	<b>1.8</b>
	Feb	100.5	<b>3.5</b>	100.6	<b>1.6</b>
	Mar	100.6	<b>3.5</b>	100.8	<b>1.6</b>
	Apr	101.3	<b>2.6</b>	101.0	<b>1.7</b>
	May	101.5	<b>2.7</b>	101.4	<b>1.9</b>
	Jun	101.2	<b>2.5</b>	101.6	<b>2.0</b>
	Jul	101.5	<b>2.6</b>	101.8	<b>2.1</b>
	Aug	101.5	<b>2.7</b>	101.9	<b>2.2</b>
	Sept	101.6	<b>2.7</b>	102.1	<b>2.3</b>
	Oct	101.6	<b>2.1</b>	102.1	<b>2.3</b>
	Nov	101.7	<b>1.7</b>	102.3	<b>2.4</b>
	Dec	101.8	<b>1.8</b>	102.5	<b>2.5</b>
<b>2020</b>					
	Jan	102.2	<b>1.9</b>	103.2	<b>2.7</b>
	Feb	102.4	<b>1.9</b>	103.4	<b>2.7</b>
	Mar	102.5	<b>1.9</b>	103.5	<b>2.7</b>
	Apr	102.7	<b>1.8</b>	103.8	<b>2.6</b>
	May	103.0	<b>1.6</b>	104.0	<b>2.6</b>
	Jun	102.7	<b>1.0</b>	104.4	<b>2.8</b>
	Jul	102.9	<b>1.0</b>	104.7	<b>2.8</b>
	Aug	103.1	<b>1.1</b>	104.9	<b>2.9</b>
	Sept	104.0	<b>1.8</b>	105.3	<b>3.1</b>
	Oct	104.4	<b>2.2</b>	105.6	<b>3.4</b>
	Nov	104.6	<b>2.2</b>	105.8	<b>3.4</b>
	Dec	104.7	<b>2.1</b>	105.9	<b>3.3</b>
<b>2021</b>					
	Jan	105.3	<b>2.2</b>	106.7	<b>3.4</b>
	Feb	105.6	<b>2.4</b>	107.1	<b>3.6</b>
	Mar	106.2	<b>2.8</b>	107.5	<b>3.9</b>
	Apr	109.6	<b>5.4</b>	110.1	<b>6.1</b>
	May	110.0	<b>5.8</b>	110.9	<b>6.7</b>
	Jun	111.0	<b>7.9</b>	111.6	<b>6.8</b>
	Jul	113.0	<b>8.4</b>	112.0	<b>7.0</b>
	Aug	113.1	<b>8.3</b>	112.1	<b>6.8</b>
	Sept	113.1	<b>8.0</b>	112.7	<b>7.1</b>

Note: Figures may vary slightly due to the rounding -up

**TABLE 6: Average Annual Inflation ( December 2018=100)**

	Group	Weights	2010	2011	2012	2013	2014	2015	2016	2017	2018	2019	2020
1	Food & Non-Alcoholic Beverages	13.55	3.6	6.9	8.0	5.4	3.0	1.3	2.7	3.4	(0.5)	1.4	3.7
2	Alcoholic Beverages & Tobacco	4.34	7.1	8.4	7.6	10.3	9.0	6.1	2.5	4.5	1.1	2.8	5.4
3	Clothing & Footwear	5.95	8.0	8.9	7.5	6.3	6.0	7.6	6.5	3.2	1.8	1.3	2.2
4	Housing, Water, Electr. Gas & Other Fuels	17.45	6.4	8.4	7.7	4.3	3.9	7.1	6.3	5.4	4.1	2.1	5.1
5	Furnishing, H/H Equipment & Routine Maintenance	4.85	9.4	9.0	7.3	4.9	5.0	6.1	3.0	3.3	2.1	2.1	2.4
6	Health	3.38	2.7	4.5	5.9	5.5	8.3	6.3	3.0	2.4	1.1	1.0	1.3
7	Transport	23.43	12.1	13.2	10.8	7.3	1.2	(5.1)	(2.7)	1.6	7.5	6.2	(2.4)
8	Communication	6.94	1.2	(3.0)	(1.4)	0.3	0.3	0.3	0.2	0.5	(4.6)	(3.8)	0.5
9	Recreation & Culture	2.82	6.0	8.3	5.8	4.5	4.2	5.7	3.0	2.2	1.8	0.4	(0.2)
10	Education	4.60	5.8	10.6	6.4	4.7	7.4	6.4	3.7	4.1	5.5	3.1	4.7
11	Restaurants & Hotels	3.66	9.0	9.3	8.4	7.9	7.6	5.5	4.0	3.7	3.4	2.5	3.2
12	Miscellaneous Goods & Services	9.01	7.0	5.3	2.0	1.2	5.2	7.2	7.5	3.9	6.4	5.3	2.0
	<b>All-Items Index</b>	<b>100.0</b>	<b>6.9</b>	<b>8.5</b>	<b>7.5</b>	<b>5.9</b>	<b>4.4</b>	<b>3.1</b>	<b>2.8</b>	<b>3.3</b>	<b>3.2</b>	<b>2.8</b>	<b>1.9</b>

Note: Figures may vary slightly due to the rounding -up



## GLOSSARY

**Consumer Price Index (CPI)** is an index which measures price changes in goods and services with reference to a base period.

**Inflation** is a measurement of prices movement of goods and services in a particular country.

**Domestic Tradeables** refers to the goods and services which a country (Botswana) can export to other countries.

**Imported Tradeables** represents the goods and services which a country (Botswana) imports from other countries (trading partners).

**Non-Tradeables** refers to the goods and services which a country cannot either export or import to other countries.

**All –Tradeables** refers to the total of **Domestic** and **Imported Tradeables**.

**Trimmed Mean Core Inflation**- attempts to remove 8 percent (by weight) of the commodity sub-groups with the largest price changes at each of the ends of an ordered series of price changes in any given month.

**Core inflation by Exclusion** is a measure used to remove the volatility inherent in prices that are only adjusted periodically and not always in response to currently prevailing market forces.



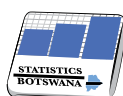
Private Bag F193,  
Francistown  
**Tel:** 241 5848,  
**Fax:** 241 7540

Private Bag 47  
Maun  
**Tel:** 371 5716  
**Fax:** 686 4327

Private Bag 32  
Ghanzi  
**Tel:** 371 5723  
**Fax:** 659 7506

Private Bag 0024, Gaborone  
**Tel:** 3671300  
**Fax:** 3952201  
**Toll Free:** 0800 600 200

**E-mail:** [info@statsbots.org.bw](mailto:info@statsbots.org.bw)  
**Website:** <http://www.statsbots.org.bw>



**STATISTICS BOTSWANA**