



# Consumer Price Index

September 2020

Private Bag 47  
Maun  
**Tel:** 371 5716  
**Fax:** 686 4327

Private Bag 32  
Ghanzi  
**Tel:** 371 5723  
**Fax:** 659 7506

Private Bag F193,  
City of Francistown  
**Tel:** 241 5848,  
**Fax:** 241 7540

Private Bag 0024, Gaborone  
**Tel:** 3671300  
**Fax:** 3952201  
**Toll Free:** 0800 600 200



## STATISTICS BOTSWANA

**E-mail:** [info@statsbots.org.bw](mailto:info@statsbots.org.bw)  
**Website:** <http://www.statsbots.org.bw>

**Contact Statistician:**  
Phaladi Labobedi

## CONTENTS

<b>SECTION 1: CORONAVIRUS (COVID-19) PANDEMIC AND CPI COMPILATION.....</b>	<b>1</b>
<b>SECTION 2: HEADLINE INFLATION.....</b>	<b>1</b>
<b>SECTION 3: CORE INFLATION.....</b>	<b>2</b>
<b>GLOSSARY:.....</b>	<b>13</b>

## CHARTS

<b>CHART 1: NATIONAL RATES OF INFLATION .....</b>	<b>2</b>
<b>CHART 2: MONTHLY CHANGES IN THE CONSUMER PRICE INDEX.....</b>	<b>2</b>
<b>CHART 3: NON-TRADEABLES INFLATION RATES.....</b>	<b>2</b>
<b>CHART 4: TRADEABLES INFLATION RATES.....</b>	<b>2</b>
<b>CHART 5: CONTRIBUTIONS OF GROUPS TO ANNUAL INFLATION RATE.....</b>	<b>3</b>

## TABLES

<b>TABLE 1: CONTRIBUTIONS OF GROUPS TO ANNUAL INFLATION RATE.....</b>	<b>4</b>
<b>TABLE 2 : CONSUMER PRICE INDEX (DECEMBER 2018 =100.0).....</b>	<b>5</b>
<b>TABLE 3: NATIONAL CONSUMER PRICE GROUP &amp; SECTION INDICES (DECEMBER 2018 = 100.0).....</b>	<b>7</b>
<b>TABLE 4: CONSUMER PRICE INDEX BY TRADEABILITY (DECEMBER 2018 = 100.0).....</b>	<b>9</b>
<b>TABLE 5: CORE INFLATION RATES BY EXCLUSION AND TRIMMED MEAN.....</b>	<b>10</b>
<b>TABLE 6: AVERAGE ANNUAL INFLATION (DECEMBER 2018 = 100.0).....</b>	<b>11</b>

## COMMENTARY

### SECTION 1: CORONAVIRUS (COVID-19) PANDEMIC AND CPI COMPILATION

Data collection for September 2020 was conducted through telephone and physical visits. All the designated outlets for which CPI prices are collected were fully operational during the month of September 2020. The information on international airfares was still not obtainable owing to the COVID-19 restrictions and hence the missing airfares were imputed using the geometric mean of price relatives (variation) of the observed domestic airfares. This is in accordance with the international standards and best practices.

### SECTION 2: HEADLINE INFLATION

The annual inflation rate in September 2020 was 1.8 percent, registering an increase of 0.8 of a percentage point on the August rate of 1.0 percent. The main contributors to the September annual inflation rate were; Housing, Water, Electricity, Gas & Other Fuels (1.1 percent), Transport (-0.9 percent) and Food & Non-Alcoholic Beverages (0.6 percent). [Refer to Table 1](#)

The inflation rates for regions between August and September 2020 showed that the Rural Villages' rate moved from 0.7 percent to 1.6 percent, registering a rise of 0.9 of a percentage point. The Urban Villages' rate went up by 0.8 of a percentage point, from 1.1 percent in August to 1.9 percent in September. The Cities & Towns' inflation rate recorded a growth of 0.7 of a percentage point, moving from 1.0 percent in August to 1.7 percent in September. [Refer to Table 2](#)

The national Consumer Price Index was 103.6 in September 2020, recording an increase of 0.8 percent, from 102.8 recorded in August 2020. The Urban Villages index moved from 103.1 in August to 104.0 in September, registering a rise of 0.9 percent. The Rural Villages index recorded an increase of 0.9 percent over the two months, moving from 102.0 in August to 102.9 in September. The Cities & Towns Index rose by 0.8 percent, from 102.8 in August to 103.7 in September. [Refer to Table 2](#)

Group indices were generally moving at a steady pace between August and September 2020, recording changes of less than 1.0 percent, except the Transport group index which registered an increase of 3.2 percent. [Refer to Table 2.](#)

The Transport group index registered an increase of 3.2 percent, from 94.0 to 97.0 during the period under review. This was attributed to the rise in the constituent section indices, notably; Transport Services (12.4 percent) and Purchase of Vehicles (1.0 percent). The rise in the Transport Services section index was mainly due to an increase in Minibus and Taxi Fares from P4.00 to P5.00 and P5.00 to P6.00 respectively, while long distance bus fare (bitumen road) increased from P0.26 to P0.30 per kilometer. These changes were effected on 1st September 2020.

The Housing, Water, Electricity, Gas & Other Fuels group index rose by 0.4 percent, from 107.2 to 107.7 over the two months. This was owed to the rise in the constituent section indices, notably; Materials for Maintenance & Repair of Dwellings (1.2 percent).

Food & Non-Alcoholic Beverages group index rose by 0.2 percent, from 106.5 to 106.7 over the two periods. This was due to the increase in most constituent section indices, particularly; Vegetables (0.9 percent) and Bread & Cereals (0.5 percent).

The All-Tradeables index was 101.6 in September 2020, recording a rise of 0.3 percent from 101.3 in August 2020. The Non-Tradeables Index rose by 1.6 percent, moving from 104.7 in August to 106.4 in September. The Imported Tradeables Index went up by 0.4 percent, from 98.7 in August to 99.1 in September 2020. The Domestic Tradeables Index realized a rise of 0.1 percent, moving from 108.5 in August to 108.6 in September. [Refer to Table 4.](#)

All-Tradeables inflation rate was -0.1 percent in September 2020, registering an increase of 0.3 of a percentage point on the August rate of -0.4 percent. The Non-Tradeables inflation rate moved from 2.9 percent in August to 4.4 percent in September, recording a rise of 1.5 percentage points. The Imported Tradeables inflation rose by 0.4 of a percentage point, from -2.5 percent to -2.1 percent during the period under review. The Domestic Tradeables inflation was 5.3 percent in September, a decline of 0.1 of a percentage from 5.4 percent recorded in August.

### SECTION 3: CORE INFLATION

The Trimmed Mean Core Inflation rate was 1.8 percent in September, registering an increase of 0.7 of a percentage point, moving from 1.1 percent recorded in August 2020. The Core Inflation rate recorded a rise of 0.2 of a percentage point moving from 2.9 percent in August to 3.1 percent in September 2020. **Refer to Table 5.**

## CHARTS

Chart 1: National Inflation Rate 2017 - 2020

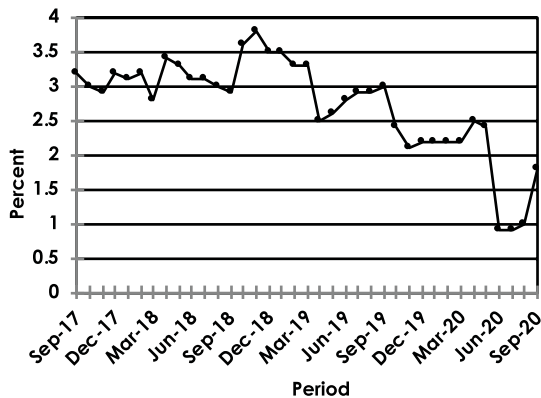


Chart 2: Monthly Changes in Consumer Price Index 2017 - 2020

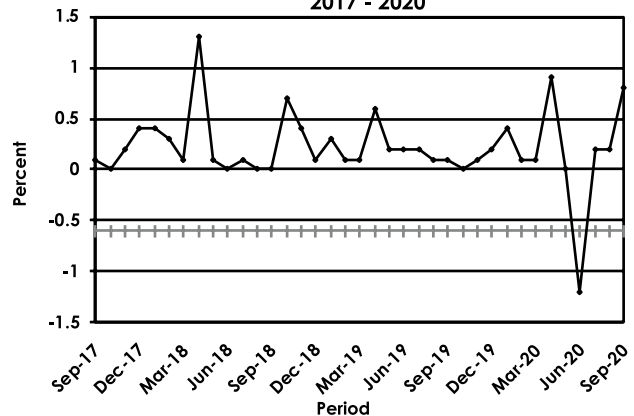


Chart 3: Non-Tradeables Inflation 2017 - 2020

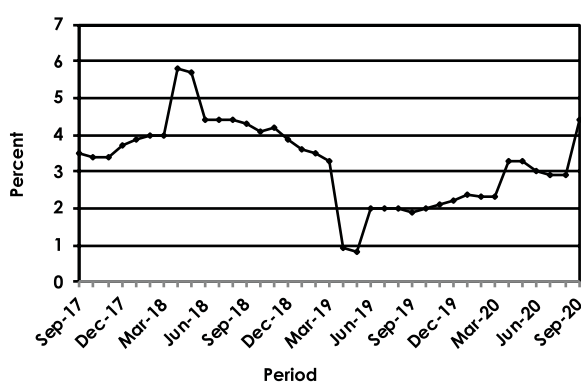


Chart 4: Tradeables Inflation 2017 - 2020

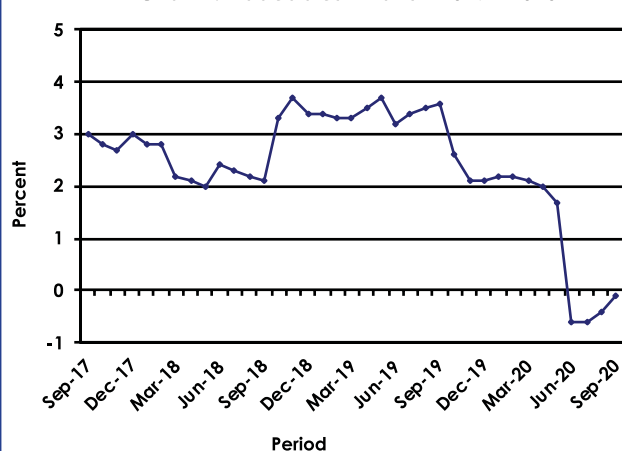
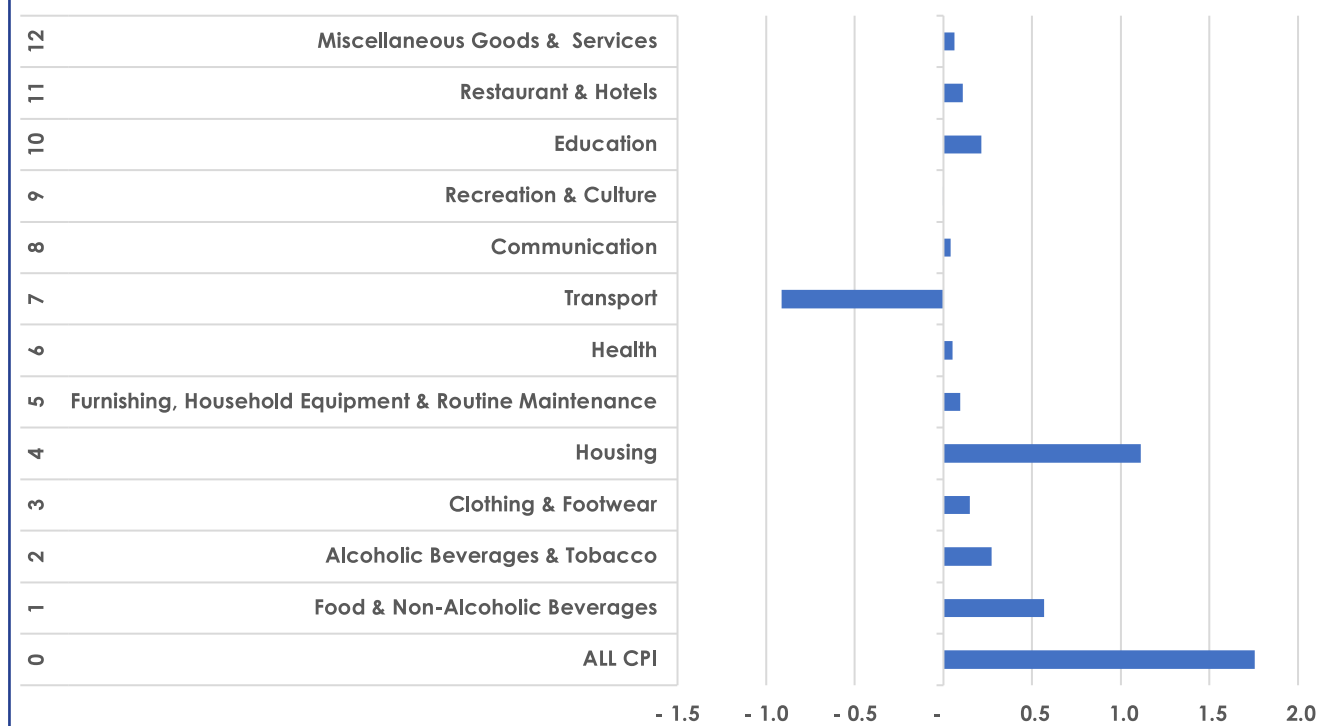


Chart 5: Contribution to Annual Inflation rate September- 2020



  
**Dr. Burton S. Mguni**  
 Statistician General  
 15<sup>th</sup> October 2020

## TABLES

TABLE 1: Contributions of Groups to Annual Inflation Rate

Group Code	Group Name	July-20	Aug-20	Sep-20
0	All Items Inflation Rate	0.9	1.0	1.8
1	Food & Non-Alcoholic Beverages	0.5	0.6	0.6
2	Alcoholic Beverages & Tobacco	0.3	0.3	0.3
3	Clothing & Footwear	0.1	0.1	0.1
4	Housing, Water, Electricity, Gas & Other Fuels	1.0	1.1	1.1
5	Furnishing, Household Equipment & Routine Maintenance	0.1	0.1	0.1
6	Health	0.0	0.0	0.1
7	Transport	-1.6	-1.6	-0.9
8	Communication	0.0	0.0	0.0
9	Recreation & Culture	-0.0	-0.0	-0.0
10	Education	0.2	0.2	0.2
11	Restaurants & Hotels	0.1	0.1	0.1
12	Miscellaneous Goods & Services	0.0	0.0	0.1

TABLE 2 : CONSUMER PRICE INDEX (DECEMBER 2018 =100.0)

		Food	Alcohol and Tobacco	Clothing and Footwear	Housing	Furniture etc	Health	Transport	Communi-cation	Rec. & Culture	Education	Rest. & Hotels	Miscella-neous
Weights		13.55	4.34	5.95	17.45	4.85	3.38	23.43	6.94	2.82	4.60	3.66	9.01
2018	Jan	100.4	99.1	98.6	96.8	98.1	99.0	91.2	110.2	98.7	99.9	97.4	94.2
	Feb	100.8	99.2	98.7	96.9	98.4	99.1	91.5	110.2	99.0	99.9	97.8	94.7
	Mar	100.9	99.3	98.9	97.2	99.0	99.2	91.4	110.3	99.4	100.0	97.9	94.9
	Apr	101.0	99.2	99.3	98.6	99.1	99.2	93.5	110.3	100.0	100.0	98.4	100.0
	May	100.9	99.5	99.5	98.7	99.2	99.4	93.6	110.3	100.1	100.0	98.6	100.1
	Jun	100.7	99.7	99.6	99.2	99.5	99.4	95.0	100.2	100.1	100.0	99.0	100.2
	Jul	100.5	99.9	99.9	99.2	99.6	99.5	95.1	100.2	100.2	100.0	99.4	100.3
	Aug	100.2	100.1	99.8	99.3	99.6	99.5	95.2	100.2	100.2	100.0	99.5	100.3
	Sept	99.9	100.1	99.8	99.7	100.0	99.7	95.0	100.2	100.2	100.0	99.7	100.2
	Oct	99.8	100.2	99.7	99.7	100.0	99.8	98.4	100.2	99.8	100.0	99.7	99.8
	Nov	99.9	100.2	99.8	99.9	100.1	99.9	99.8	100.2	99.9	100.0	99.7	99.8
	Dec	100.0	100.0	100.0	100.0	100.0	100.0	100.0	100.0	100.0	100.0	100.0	100.0
2019	Jan	100.4	99.8	100.2	100.1	100.2	100.1	100.3	100.0	100.1	103.0	100.0	100.3
	Feb	100.6	99.6	100.2	100.1	100.4	100.2	100.6	100.0	100.1	103.1	100.1	100.6
	Mar	101.0	99.9	100.3	100.3	100.6	100.3	100.5	100.0	100.4	103.1	100.6	100.4
	Apr	101.4	101.2	100.4	100.3	100.7	100.3	100.7	100.0	100.2	103.1	100.8	104.9
	May	102.0	102.4	100.5	100.4	100.8	100.4	100.8	100.0	100.2	103.1	101.1	104.9
	Jun	102.0	103.2	100.7	100.9	101.6	100.5	100.6	100.1	100.2	103.1	101.3	105.0
	Jul	102.1	103.5	100.8	101.0	101.8	100.6	100.9	100.1	100.3	103.1	101.6	105.4
	Aug	102.1	103.6	101.0	101.1	101.8	100.7	101.0	100.2	100.3	103.1	101.8	105.3
	Sept	102.4	103.8	101.0	101.2	102.1	100.6	100.9	100.2	100.3	103.1	102.1	105.3
	Oct	102.3	104.1	101.1	101.3	102.2	100.7	101.0	100.3	100.0	103.1	102.3	105.2
	Nov	102.5	104.2	101.3	101.3	102.4	100.8	101.2	100.4	100.0	103.1	102.4	105.3
	Dec	103.0	104.4	101.3	101.5	102.7	100.8	101.3	100.4	99.8	103.1	102.9	105.3
2020	Jan	103.7	104.5	101.7	101.6	103.0	101.0	101.3	100.4	99.8	107.9	103.7	105.5
	Feb	104.2	104.6	101.8	101.7	103.3	101.0	101.4	100.3	100.0	108.0	103.9	105.6
	Mar	104.4	104.7	102.0	101.9	103.5	101.1	101.3	100.3	100.0	108.0	104.2	105.4
	Apr	104.6	104.8	102.1	106.5	103.7	101.5	101.3	100.3	99.7	108.0	104.4	106.1
	May	105.2	104.8	102.4	106.6	103.7	101.7	100.7	100.4	99.5	108.0	104.7	106.2
	Jun	105.7	108.7	102.9	106.7	103.9	102.0	93.9	100.5	99.5	108.0	104.8	106.2
	Jul	106.1	110.3	103.2	106.9	103.7	102.0	93.9	100.6	99.6	108.0	104.8	105.9
	Aug	106.5	110.4	103.3	107.2	104.0	102.1	94.0	100.8	99.8	108.0	104.8	105.8
	Sept	106.7	110.2	103.5	107.7	104.1	102.2	97.0	100.8	100.2	108.0	105.1	106.0
% Change on													
Last month		0.2	(0.1)	0.2	0.4	0.1	0.0	3.2	0.1	0.4	0.0	0.3	0.2

Note: Percentage change has been calculated from unrounded indices and hence may vary slightly from the change in rounded indices.

TABLE 2: CONSUMER PRICE INDEX (Cont.)

		All Items Index	National Inflation Rate	Monthly Change	Towns & Cities Index	Urban Village Index	Rural Villages Index	Annual Inflation		
								Towns & Cities	Urban Villages	Rural
		100.0	%	%	0.38	0.41	0.21	%	%	%
2018	Jan	97.0	3.1	0.4	96.4	97.0	97.8	3.6	2.9	2.8
	Feb	97.2	3.2	0.3	96.7	97.3	98.1	3.6	2.9	2.7
	Mar	97.4	2.8	0.1	96.8	97.5	98.1	3.3	2.6	2.3
	Apr	98.7	3.4	1.3	98.4	98.7	99.1	4.2	3.1	2.7
	May	98.7	3.3	0.1	98.5	98.8	99.1	4.1	3.0	2.5
	Jun	98.8	3.1	0.0	98.6	98.8	99.0	4.0	2.7	2.3
	Jul	98.8	3.1	0.1	98.7	98.9	99.1	3.9	2.7	2.1
	Aug	98.8	3.0	(0.0)	98.6	98.9	99.1	3.8	2.6	2.0
	Sept	98.9	2.9	0.0	98.7	98.9	99.1	3.6	2.7	2.0
	Oct	99.5	3.6	0.7	99.5	99.5	99.7	4.4	3.4	2.5
	Nov	99.9	3.8	0.4	99.9	99.8	100.0	4.7	3.6	2.6
	Dec	100.0	3.5	0.1	100.0	100.0	100.0	4.2	3.5	2.5
2019	Jan	100.3	3.5	0.3	100.4	100.3	100.2	4.1	3.4	2.4
	Feb	100.5	3.3	0.1	100.6	100.5	100.3	4.0	3.2	2.3
	Mar	100.6	3.3	0.1	100.6	100.6	100.3	3.9	3.2	2.2
	Apr	101.2	2.5	0.6	101.2	101.3	100.8	2.9	2.6	1.7
	May	101.3	2.6	0.2	101.4	101.5	100.9	2.9	2.7	1.8
	Jun	101.5	2.8	0.2	101.6	101.6	101.1	3.0	2.9	2.1
	Jul	101.7	2.9	0.2	101.8	101.8	101.2	3.1	3.0	2.1
	Aug	101.7	2.9	0.1	101.8	101.9	101.3	3.2	3.1	2.2
	Sept	101.8	3.0	0.1	101.9	102.0	101.4	3.2	3.1	2.3
	Oct	101.9	2.4	0.0	102.0	102.0	101.4	2.5	2.5	1.8
	Nov	102.0	2.1	0.1	102.1	102.1	101.5	2.2	2.3	1.5
	Dec	102.2	2.2	0.2	102.3	102.3	101.6	2.3	2.3	1.6
2020	Jan	102.6	2.2	0.4	102.8	102.6	102.0	2.4	2.3	1.8
	Feb	102.7	2.2	0.1	102.9	102.8	102.1	2.3	2.3	1.9
	Mar	102.8	2.2	0.1	102.9	102.9	102.3	2.3	2.3	2.0
	Apr	103.7	2.5	0.9	103.9	103.9	103.0	2.7	2.6	2.3
	May	103.7	2.4	0.0	103.9	103.8	103.1	2.5	2.3	2.2
	Jun	102.4	0.9	(1.2)	102.6	102.7	101.5	1.0	1.1	0.4
	Jul	102.6	0.9	0.2	102.7	102.9	101.8	0.9	1.1	0.6
	Aug	102.8	1.0	0.2	102.8	103.1	102.0	1.0	1.1	0.7
	Sept	103.6	1.8	0.8	103.7	104.0	102.9	1.7	1.9	1.6
<b>% Change on</b>										
<b>Last month</b>		<b>0.8</b>			<b>0.8</b>	<b>0.9</b>	<b>0.9</b>			

Note: Percentage change has been calculated from unrounded indices and hence may vary slightly from the change in rounded indices.



**TABLE 3: NATIONAL CONSUMER PRICE GROUP AND SECTION INDICES (DECEMBER 2018=100.0)**

	Group Section	Weights	This month Sep 2020	Last month Aug 2020	3 months ago Jun 2020	6 months ago Mar 2020	12 months ago Sep 2019	Percentage Change on:			
								Last month	3 months ago	6 months ago	12 months ago
<b>1</b>	<b>Food &amp; Non-Alcoholic Beverages</b>	<b>13.55</b>	<b>106.7</b>	<b>106.5</b>	<b>105.7</b>	<b>104.4</b>	<b>102.4</b>	<b>0.2</b>	<b>0.9</b>	<b>2.1</b>	<b>4.2</b>
1.1	Bread & Cereals	4.26	109.6	109.1	106.8	104.9	103.6	0.5	2.7	4.5	5.9
1.2	Meat (Fresh, Chilled & Frozen)	2.36	110.4	111.0	111.6	109.0	102.4	(0.5)	(1.0)	1.3	7.8
1.3	Fish (Fresh, Chilled & Frozen)	0.18	101.5	101.9	103.1	105.4	103.9	(0.4)	(1.5)	(3.7)	(2.3)
1.4	Milk, Cheese & Milk Products	0.98	104.3	104.1	103.6	102.4	102.2	0.1	0.6	1.8	2.0
1.5	Oils & Fats	0.92	101.2	101.0	99.9	101.0	100.3	0.2	1.3	0.2	0.9
1.6	Fruits	0.78	107.7	107.5	110.1	106.4	101.8	0.2	(2.2)	1.2	5.8
1.7	Vegetables	1.08	105.7	104.7	102.6	103.7	103.5	0.9	3.0	1.9	2.1
1.8	Sugar, Jam, Honey, Chocolate & Confectionery	1.11	99.8	99.5	99.4	98.8	98.5	0.3	0.5	1.1	1.4
1.9	Food Not Elsewhere Classified	0.54	104.5	104.4	105.1	103.9	103.6	0.1	(0.6)	0.6	0.8
1.10	Coffee, Tea & Cocoa	0.73	103.8	103.6	103.0	102.4	101.5	0.2	0.7	1.4	2.3
1.11	Mineral Waters, Soft Drinks, Fruits & Vegetables Juices	0.62	103.2	103.4	103.5	103.1	102.6	(0.2)	(0.3)	0.1	0.6
<b>2</b>	<b>Alcoholic Beverages &amp; Tobacco</b>	<b>4.34</b>	<b>110.2</b>	<b>110.4</b>	<b>108.7</b>	<b>104.7</b>	<b>103.8</b>	<b>(0.1)</b>	<b>1.4</b>	<b>5.3</b>	<b>6.2</b>
2.1	Alcoholic Beverages	3.51	110.4	110.6	108.8	104.7	103.8	(0.2)	1.5	5.5	6.3
2.2	Tobacco	0.82	109.6	109.5	108.3	104.7	103.6	0.1	1.2	4.7	5.8
<b>3</b>	<b>Clothing &amp; Footwear</b>	<b>5.95</b>	<b>103.5</b>	<b>103.3</b>	<b>102.9</b>	<b>102.0</b>	<b>101.0</b>	<b>0.2</b>	<b>0.6</b>	<b>1.5</b>	<b>2.5</b>
3.1	Clothing	2.60	104.0	103.7	103.4	102.5	101.4	0.3	0.6	1.5	2.6
3.2	Other Articles of Clothing	0.72	103.3	103.1	102.4	101.8	100.9	0.2	0.9	1.4	2.3
3.3	Cleaning, Repair & Hire	0.61	105.1	104.4	104.9	103.0	101.2	0.6	0.2	2.0	3.8
3.4	Footwear	2.03	102.5	102.4	101.9	101.2	100.4	0.0	0.6	1.3	2.0
<b>4</b>	<b>Housing, Water, Electricity, Gas &amp; Other Fuels</b>	<b>17.45</b>	<b>107.7</b>	<b>107.2</b>	<b>106.7</b>	<b>101.9</b>	<b>101.2</b>	<b>0.4</b>	<b>1.0</b>	<b>5.7</b>	<b>6.4</b>
4.1	Rent Paid by Tenants	7.78	103.4	103.0	103.0	103.0	101.9	0.3	0.3	0.3	1.5
4.2	Materials for Maintenance & Repair of Dwellings	3.83	107.4	106.1	103.9	102.2	101.8	1.2	3.4	5.1	5.5
4.3	Water Supply & Miscellaneous Services	1.96	100.0	100.0	100.0	100.0	100.0	0.0	0.0	0.0	0.0
4.4	Electricity, Gas & Other Fuels	3.89	120.4	120.4	120.0	100.1	100.0	0.0	0.3	20.3	20.4
<b>5</b>	<b>Furnishing, H/H Equipment &amp; Routine Maintenance</b>	<b>4.85</b>	<b>104.1</b>	<b>104.0</b>	<b>103.9</b>	<b>103.5</b>	<b>102.1</b>	<b>0.1</b>	<b>0.2</b>	<b>0.6</b>	<b>2.0</b>
5.1	Furniture & Furnishing	1.35	104.2	104.1	103.9	103.1	101.5	0.0	0.3	1.0	2.7
5.2	Carpets & Other Floor Coverings	0.27	104.0	103.9	103.3	102.2	101.0	0.1	0.7	1.7	3.0
5.3	Household Textiles	0.29	105.0	104.8	103.7	102.6	101.2	0.1	1.2	2.3	3.7
5.4	Household Appliances	0.72	102.4	102.6	101.7	100.7	99.9	(0.2)	0.7	1.7	2.5
5.5	Glassware, Tableware & Household Utensils	0.23	104.5	103.8	103.8	103.5	102.1	0.6	0.6	1.0	2.3
5.6	Small Tools, Miscellaneous Accessories	0.04	105.5	105.0	103.6	103.0	102.3	0.5	1.8	2.4	3.1
5.7	Goods & Services for Household Maintenance	1.95	104.5	104.3	104.8	105.1	103.7	0.3	(0.3)	(0.6)	0.8
<b>6</b>	<b>Health</b>	<b>3.38</b>	<b>102.2</b>	<b>102.1</b>	<b>102.0</b>	<b>101.1</b>	<b>100.6</b>	<b>0.0</b>	<b>0.2</b>	<b>1.0</b>	<b>1.5</b>
6.1	Medical Products, Applications & Equipments	0.98	103.5	103.5	103.4	102.6	101.4	0.1	0.1	0.9	2.1
6.2	Out-Patient Services	0.93	102.7	102.7	102.2	101.4	100.8	0.0	0.5	1.3	1.9
6.3	Hospital Services	1.47	100.9	100.9	100.9	100.0	100.0	0.0	0.0	0.9	0.9

**Note:** Percentage change has been calculated from unrounded indices and hence may vary slightly from the change in rounded indices.

**TABLE 3: NATIONAL CONSUMER PRICE GROUP AND SECTION INDICES (DECEMBER 2018=100.0) (Cont.)**

	Group Section	Weights	This month Sep 2020	Last month Aug 2020	3 months ago Jun 2020	6 months ago Mar 2020	12 months ago Sep 2019	Percentage Change on:			
								Last month	3 months ago	6 months ago	12 months ago
<b>7</b>	<b>Transport</b>	<b>23.43</b>	<b>97.0</b>	<b>94.0</b>	<b>93.9</b>	<b>101.3</b>	<b>100.9</b>	<b>3.2</b>	<b>3.4</b>	<b>(4.2)</b>	<b>(3.9)</b>
7.1	Purchase of Vehicles	5.74	104.9	103.9	103.7	104.2	102.8	1.0	1.2	0.7	2.0
7.2	Operation of Personal Transport	12.56	87.0	87.0	86.8	100.5	100.4	0.1	0.2	(13.4)	(13.3)
7.3	Transport Services	5.13	112.6	100.2	100.1	100.1	100.1	12.4	12.5	12.5	12.5
<b>8</b>	<b>Communication</b>	<b>6.94</b>	<b>100.8</b>	<b>100.8</b>	<b>100.5</b>	<b>100.3</b>	<b>100.2</b>	<b>0.1</b>	<b>0.3</b>	<b>0.5</b>	<b>0.6</b>
8.1	Postal Services	0.21	100.0	100.0	100.0	100.0	100.0	0.0	0.0	0.0	0.0
8.2	Telephone & Telefax Equipment *	1.13	105.1	104.7	103.3	101.7	101.4	0.3	1.7	3.3	3.6
8.3	Telephone & Telefax Services	5.60	100.0	100.0	100.0	100.0	100.0	0.0	0.0	0.0	0.0
<b>9</b>	<b>Recreation &amp; Culture</b>	<b>2.82</b>	<b>100.2</b>	<b>99.8</b>	<b>99.5</b>	<b>100.0</b>	<b>100.3</b>	<b>0.4</b>	<b>0.8</b>	<b>0.2</b>	<b>(0.0)</b>
9.1	Audio Visual, Photographic & Information Processing Equipment	2.10	100.0	99.5	99.2	99.5	100.0	0.5	0.8	0.5	(0.0)
9.2	Other Recreational Items & Equipments	0.30	102.8	102.9	101.4	102.0	101.1	(0.1)	1.3	0.8	1.7
9.3	Recreational & Cultural Services	0.31	97.4	97.4	97.3	99.9	99.8	0.0	0.1	(2.5)	(2.4)
9.4	Newspapers, Books & Stationary	0.11	106.2	105.9	105.9	105.2	104.8	0.2	0.3	1.0	1.3
<b>10</b>	<b>Education</b>	<b>4.60</b>	<b>108.0</b>	<b>108.0</b>	<b>108.0</b>	<b>108.0</b>	<b>103.1</b>	<b>0.0</b>	<b>0.0</b>	<b>0.0</b>	<b>4.7</b>
10.1	Pre-Primary & Primary Education	1.89	108.3	108.3	108.3	108.3	103.4	0.0	0.0	0.0	4.8
10.2	Secondary & Tertiary Education	2.70	107.8	107.8	107.7	107.7	103.0	0.0	0.0	0.0	4.6
<b>11</b>	<b>Restaurants &amp; Hotels</b>	<b>3.66</b>	<b>105.1</b>	<b>104.8</b>	<b>104.8</b>	<b>104.2</b>	<b>102.1</b>	<b>0.3</b>	<b>0.3</b>	<b>0.9</b>	<b>3.0</b>
11.1	Restaurants, Cafes & the Like	3.02	105.7	105.3	105.0	104.3	102.0	0.4	0.7	1.4	3.6
11.2	Accommodation Services	0.64	102.1	102.7	103.9	103.9	102.2	(0.6)	(1.8)	(1.7)	(0.1)
<b>12</b>	<b>Miscellaneous Goods &amp; Services</b>	<b>9.01</b>	<b>106.0</b>	<b>105.8</b>	<b>106.2</b>	<b>105.4</b>	<b>105.3</b>	<b>0.2</b>	<b>(0.2)</b>	<b>0.6</b>	<b>0.7</b>
12.1	Personal Care	2.33	102.0	101.7	103.2	101.5	101.0	0.3	(1.2)	0.5	1.0
12.2	Personal Effects Not Elsewhere Classified	0.22	100.9	101.0	100.9	100.7	100.2	(0.1)	(0.0)	0.2	0.7
12.3	Social Protection	0.13	108.2	108.2	108.2	108.2	101.6	0.0	0.0	0.0	6.6
12.4	Insurance	3.62	111.1	110.8	110.8	110.8	112.1	0.2	0.3	0.3	(0.9)
12.5	Financial Services	1.09	101.6	101.5	102.0	101.5	101.0	0.1	(0.3)	0.2	0.7
12.6	Taxes, Licences & Fees	1.61	103.9	103.8	103.6	102.2	100.4	0.1	0.3	1.7	3.5
<b>All-Items Index</b>		<b>100.0</b>	<b>103.6</b>	<b>102.8</b>	<b>102.4</b>	<b>102.8</b>	<b>101.8</b>	<b>0.8</b>	<b>1.2</b>	<b>0.8</b>	<b>1.8</b>

Note: Percentage change has been calculated from unrounded indices and hence may vary slightly from the change in rounded indices.

**TABLE 4: CONSUMER PRICE INDEX BY TRADEABILITY (DECEMBER 2018 = 100.0)**

		All Items		Non-Tradable		Domestic Tradable		Imported Tradable		All Tradable	
		Index	Inflation	Index	Inflation	Index	Inflation	Index	Inflation	Index	Inflation
Weights		100.00		42.29		15.46		42.26		57.71	
<b>2018</b>	Jan	97.0	3.1	96.7	3.9	99.3	0.5	96.1	3.8	97.1	2.8
	Feb	97.2	3.2	96.9	4.0	99.6	0.3	96.4	3.8	97.4	2.8
	Mar	97.4	2.8	97.1	4.0	99.8	0.1	96.5	3.1	97.5	2.2
	Apr	98.7	3.4	100.4	5.8	99.9	-0.1	96.7	3.1	97.7	2.1
	May	98.7	3.3	100.5	5.7	100.0	-0.2	96.8	3.0	97.7	2.0
	Jun	98.8	3.1	99.7	4.4	99.9	-0.2	97.5	3.6	98.2	2.4
	Jul	98.8	3.1	99.8	4.4	99.9	-0.1	97.6	3.4	98.3	2.3
	Aug	98.8	3.0	99.8	4.4	99.8	0.0	97.6	3.2	98.3	2.2
	Sept	98.9	2.9	100.0	4.3	99.8	0.6	97.5	2.9	98.2	2.1
	Oct	99.5	3.6	99.9	4.1	99.7	0.7	99.1	4.5	99.3	3.3
	Nov	99.9	3.8	99.9	4.2	99.9	1.0	99.9	4.9	99.9	3.7
	Dec	100.0	3.5	100.0	3.9	100.0	1.1	100.0	4.4	100.0	3.4
<b>2019</b>	Jan	100.3	3.5	100.2	3.6	100.8	1.5	100.3	4.4	100.4	3.4
	Feb	100.5	3.3	100.2	3.5	100.9	1.4	100.5	4.2	100.6	3.3
	Mar	100.6	3.3	100.3	3.3	101.3	1.5	100.6	4.2	100.7	3.3
	Apr	101.2	2.5	101.3	0.9	101.8	1.9	100.8	4.3	101.1	3.5
	May	101.3	2.6	101.3	0.8	102.3	2.4	101.0	4.4	101.4	3.7
	Jun	101.5	2.8	101.6	2.0	102.5	2.6	101.0	3.6	101.4	3.2
	Jul	101.7	2.9	101.8	2.0	102.7	2.9	101.2	3.7	101.6	3.4
	Aug	101.7	2.9	101.8	2.0	103.0	3.2	101.3	3.7	101.7	3.5
	Sept	101.8	3.0	101.9	1.9	103.2	3.4	101.2	3.9	101.7	3.6
	Oct	101.9	2.4	101.9	2.0	103.3	3.5	101.3	2.3	101.8	2.6
	Nov	102.0	2.1	102.0	2.1	103.4	3.5	101.5	1.6	102.0	2.1
	Dec	102.2	2.2	102.2	2.2	103.7	3.7	101.6	1.6	102.1	2.1
<b>2020</b>	Jan	102.6	2.2	102.5	2.4	105.0	4.2	101.8	1.5	102.6	2.2
	Feb	102.7	2.2	102.6	2.3	105.4	4.4	102.0	1.4	102.8	2.2
	Mar	102.8	2.2	102.6	2.3	105.6	4.2	102.0	1.4	102.9	2.1
	Apr	103.7	2.5	104.6	3.3	106.0	4.1	102.1	1.2	103.1	2.0
	May	103.7	2.4	104.7	3.3	106.6	4.2	101.8	0.8	103.1	1.7
	Jun	102.4	0.9	104.7	3.0	107.7	5.1	98.3	-2.7	100.8	-0.6
	Jul	102.6	0.9	104.7	2.9	108.1	5.2	98.5	-2.7	101.0	-0.6
	Aug	102.8	1.0	104.7	2.9	108.5	5.4	98.7	-2.5	101.3	-0.4
	Sept	103.6	1.8	106.4	4.4	108.6	5.3	99.1	-2.1	101.6	-0.1
<b>% Change on</b>											
<b>Last month</b>		<b>0.8</b>		<b>1.6</b>		<b>0.1</b>		<b>0.4</b>		<b>0.3</b>	

**Note:** Percentage change has been calculated from unrounded indices and hence may vary slightly from the change in rounded indices.

**TABLE 5: CORE INFLATION RATES BY EXCLUSION AND TRIMMED MEAN**

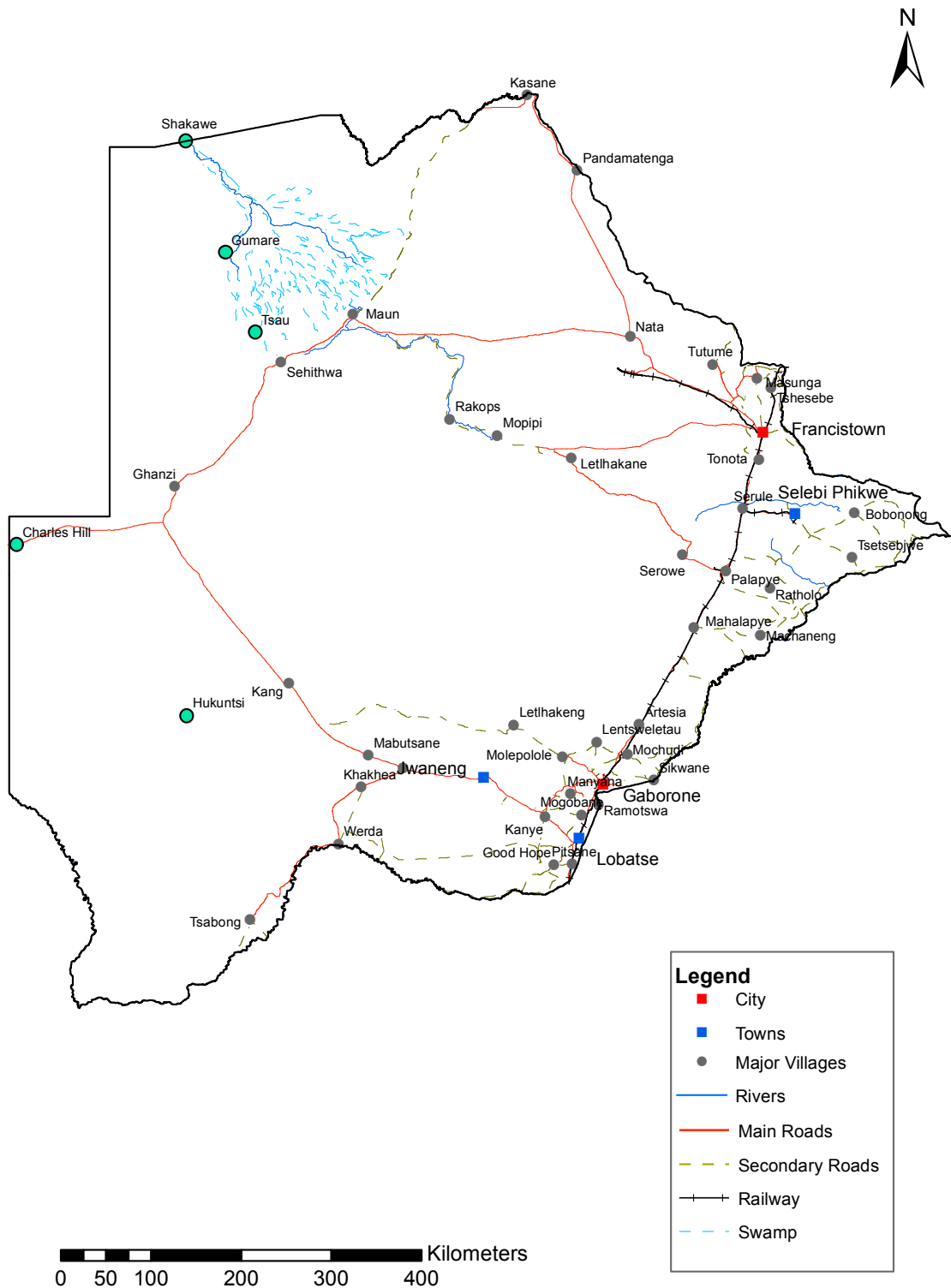
Year	Month	Consumer Price Index (Trimmed Mean) (September 2016 = 100)	Core Monthly Inflation Rate (Trimmed Mean) (percentage)	Consumer Price Index (Excluding Administered Prices) (September 2016 = 100)	Core Monthly Inflation (Excluding Administered Prices) (percentage)
<b>2018</b>	Jan	96.1	<b>2.8</b>	98.7	<b>2.2</b>
	Feb	96.4	<b>2.9</b>	99.0	<b>2.2</b>
	Mar	96.6	<b>2.6</b>	99.2	<b>2.0</b>
	Apr	97.6	<b>3.1</b>	99.4	<b>1.9</b>
	May	97.7	<b>3.0</b>	99.5	<b>1.8</b>
	Jun	98.6	<b>3.2</b>	99.6	<b>1.8</b>
	Jul	98.7	<b>3.1</b>	99.7	<b>1.7</b>
	Aug	98.7	<b>3.0</b>	99.7	<b>1.6</b>
	Sept	98.8	<b>2.9</b>	99.8	<b>1.6</b>
	Oct	99.5	<b>3.7</b>	99.8	<b>1.6</b>
	Nov	99.6	<b>3.8</b>	99.9	<b>1.7</b>
	Dec	100.0	<b>3.6</b>	100.0	<b>1.8</b>
<b>2019</b>	Jan	100.4	<b>3.6</b>	100.4	<b>1.8</b>
	Feb	100.5	<b>3.5</b>	100.6	<b>1.6</b>
	Mar	100.6	<b>3.5</b>	100.8	<b>1.6</b>
	Apr	101.3	<b>2.6</b>	101.0	<b>1.7</b>
	May	101.5	<b>2.7</b>	101.4	<b>1.9</b>
	Jun	101.2	<b>2.5</b>	101.6	<b>2.0</b>
	Jul	101.5	<b>2.6</b>	101.8	<b>2.1</b>
	Aug	101.5	<b>2.7</b>	101.9	<b>2.2</b>
	Sept	101.6	<b>2.7</b>	102.1	<b>2.3</b>
	Oct	101.6	<b>2.1</b>	102.1	<b>2.3</b>
	Nov	101.7	<b>1.7</b>	102.3	<b>2.4</b>
	Dec	101.8	<b>1.8</b>	102.5	<b>2.5</b>
<b>2020</b>	Jan	102.2	<b>1.9</b>	103.2	<b>2.7</b>
	Feb	102.4	<b>1.9</b>	103.4	<b>2.7</b>
	Mar	102.5	<b>1.9</b>	103.5	<b>2.7</b>
	Apr	102.7	<b>1.8</b>	103.8	<b>2.6</b>
	May	103.0	<b>1.6</b>	104.0	<b>2.6</b>
	Jun	102.7	<b>1.0</b>	104.4	<b>2.8</b>
	Jul	102.9	<b>1.0</b>	104.7	<b>2.8</b>
	Aug	103.1	<b>1.1</b>	104.9	<b>2.9</b>
	Sept	104.0	<b>1.8</b>	105.3	<b>3.1</b>

**Note:** Percentage change has been calculated from unrounded indices and hence may vary slightly from the change in rounded indices.

**TABLE 6: Average Annual Inflation ( December 2018=100)**

	Group	Weights	2009	2010	2011	2012	2013	2014	2015	2016	2017	2018	2019
1	Food & Non-Alcoholic Beverages	13.55	14.7	3.6	6.9	8.0	5.4	3.0	1.3	2.7	3.4	(0.5)	1.4
2	Alcoholic Beverages & Tobacco	4.34	35.2	7.1	8.4	7.6	10.3	9.0	6.1	2.5	4.5	1.1	2.8
3	Clothing & Footwear	5.95	8.4	8.0	8.9	7.5	6.3	6.0	7.6	6.5	3.2	1.8	1.3
4	Housing, Water, Electr. Gas & Other Fuels	17.45	4.8	6.4	8.4	7.7	4.3	3.9	7.1	6.3	5.4	4.1	2.1
5	Furnishing, H/H Equipment & Routine Maintenance	4.85	11.9	9.4	9.0	7.3	4.9	5.0	6.1	3.0	3.3	2.1	2.1
6	Health	3.38	5.5	2.7	4.5	5.9	5.5	8.3	6.3	3.0	2.4	1.1	1.0
7	Transport	23.43	(8.4)	12.1	13.2	10.8	7.3	1.2	(5.1)	(2.7)	1.6	7.5	6.2
8	Communication	6.94	(0.3)	1.2	(3.0)	(1.4)	0.3	0.3	0.3	0.2	0.5	(4.6)	(3.8)
9	Recreation & Culture	2.82	5.0	6.0	8.3	5.8	4.5	4.2	5.7	3.0	2.2	1.8	0.4
10	Education	4.60	3.9	5.8	10.6	6.4	4.7	7.4	6.4	3.7	4.1	5.5	3.1
11	Restaurants & Hotels	3.66	18.8	9.0	9.3	8.4	7.9	7.6	5.5	4.0	3.7	3.4	2.5
12	Miscellaneous Goods & Services	9.01	3.8	7.0	5.3	2.0	1.2	5.2	7.2	7.5	3.9	6.4	5.3
	<b>All-Items Index</b>	<b>100.0</b>	<b>8.2</b>	<b>6.9</b>	<b>8.5</b>	<b>7.5</b>	<b>5.9</b>	<b>4.4</b>	<b>3.1</b>	<b>2.8</b>	<b>3.3</b>	<b>3.2</b>	<b>2.8</b>

## CPI AREA COVERAGE



## GLOSSARY

**Consumer Price Index (CPI)** is an index which measures price changes in goods and services with reference to a base period.

**Inflation** is a measurement of prices movement of goods and services in a particular country.

**Domestic Tradeables** refers to the goods and services which a country (Botswana) can export to other countries.

**Imported Tradeables** represents the goods and services which a country (Botswana) imports from other countries (trading partners).

**Non-Tradeables** refers to the goods and services which a country cannot either export or import to other countries.

**All –Tradeables** refers to the total of **Domestic** and **Imported Tradeables**.

**Trimmed Mean Core Inflation**- attempts to remove 8 percent (by weight) of the commodity sub-groups with the largest price changes at each of the ends of an ordered series of price changes in any given month.

**Core inflation by Exclusion** is a measure used to remove the volatility inherent in prices that are only adjusted periodically and not always in response to currently prevailing market forces.

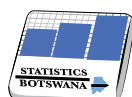


Private Bag 47  
Maun  
**Tel:** 371 5716  
**Fax:** 686 4327

Private Bag 32  
Ghanzi  
**Tel:** 371 5723  
**Fax:** 659 7506

Private Bag F193,  
City of Francistown  
**Tel:** 241 5848,  
**Fax:** 241 7540

Private Bag 0024, Gaborone  
**Tel:** 3671300  
**Fax:** 3952201  
**Toll Free:** 0800 600 200



**STATISTICS BOTSWANA**