

*Statistics Botswana*  
*Private Bag 0024, Gaborone, Botswana*  
*Tel: (267) 3671300, Fax (267) 3952201,*  
*Email: [csobots@gov.bw](mailto:csobots@gov.bw), Website: [www.cso.gov.bw](http://www.cso.gov.bw)*

---

*All correspondence should be addressed to Statistician General*

---

## **CONSUMER PRICE INDEX - NOVEMBER 2012**

Copyright 2012 © Statistics Botswana

# CONTENTS

## COMMENTARY

Section 1: Headline Inflation

Section 2: Core Inflation

## CHARTS

1. National Rates of Inflation, January 2010 – November 2012
2. Monthly Changes in the Cost-of-Living Index, January 2010 – November 2012
3. Non-Tradable Inflation Rates, January 2010 – November 2012
4. Tradable Inflation Rates, January 2010 - November 2012

## TABLES

1. Cost-of-Living Index Series (January 2010 – November 2012)
2. National Cost-of-Living Group and Section Indices
3. Cost-of-Living Index by Tradability (January 2010 – November 2012)
4. Core Inflation Rates
5. Annual average inflation rates 2008-2011

## GLOSSARY

[Contact Statistician: Phaladi Labobedi Tel: 3934968 Ext: 365/378](#)

## COMMENTARY

### Section 1: Headline Inflation

The November 2012 national year-on-year inflation rate was recorded at 7.4 percent, up by 0.3 of a percentage point from the October national inflation of 7.1 percent. The rural villages' inflation rate gained 1.0 percentage point, from 6.9 percent registered in October to 7.9 percent in November. The cities and towns' inflation rate went up by 0.2 of a percentage point, from 7.5 percent in October to 7.7 percent in November. The urban villages' inflation rate remained unchanged at 6.8 percent in November, as it was in October 2012.

In November, the national Consumer Price Index was 164.4, registering an increase of 1.0 percent from the October index of 162.8. The rural villages' index went up from 165.3 to 167.2, recording an increase of 1.1 percent. The cities and towns' index rose by 0.9 percent, from 162.6 to 164.2 between the two months, while the urban villages' index moved from 161.7 to 163.1 between October and November, also recording an increase of 0.9 percent.

Three group indices recorded changes of at least 1.0 percent between October and November – *Transport (2.3 percent), Alcoholic Beverages, Tobacco & Narcotics (2.3 percent) and Restaurants & Hotels (1.4 percent)*.

The *Transport* group index registered an increase of 2.3 percent, from 164.4 in October to 168.2 in November. This attributed to a rise in the constituent section index of *Operation of Personal Transport*, which went up by 3.9 percent. The increase in *Operation of Personal Transport* section index was attributed to the rise in retail pump prices for petrol and diesel by P0.50 per litre each, which effected on the 9<sup>th</sup> November 2012.

The *Alcoholic Beverages, Tobacco & Narcotics* group index also rose by 2.3 percent, from 210.7 to 215.5 between the two months. This was due to increases in the constituent section indices of *Alcoholic Beverages (2.6 percent)* and *Tobacco (0.6 percent)*. *The rise Alcoholic Beverages was due to the effects of the increase of Alcohol levy by five(5) percent as announced on the 1<sup>st</sup> October 2012.*

The *Restaurants & Hotels* group index registered an increase of 1.4 percent from 201.0 in October to 203.8 in November. The increase was a result of the constituent section index of *Restaurants, Café's and the Like (1.5 percent)*.

The *All-Tradable* inflation rate for November stood at 8.5 percent, up by 0.3 of a percentage point from the October rate of 8.2 percent. The *Domestic Tradable* inflation rate recorded an increase of 1.0 percentage point over the period under-review, from 8.7 to 9.7 percent. The *Non-Tradable* inflation rate went up by 0.2 of a percentage point, from 4.3 percent in October to 4.5 percent in November, while the *Imported Tradable* inflation rate in November stood at 7.8 percent, as in the previous month.

Both *All-Tradable*, *Domestic* and *Imported Tradable* indices recorded an increase of 1.2 percent each between October and November. The *All-Trade* moved from 169.9 in October to 172.0 in November. The *Domestic Tradable* index from 181.6 in October to 183.7 in November whereas the *Imported Tradable* index advanced from 164.0 to 165.9 in the same period. The *Non-Tradable* index rose by 0.3 percent, from 146.3 in October to 146.7 in November.

## Section 2: Core Inflation

The Trimmed Mean Core Inflation rate stood at 7.1 percent in November, an increase of 0.4 of a percentage point from the October rate of 6.7 percent. The Core Inflation rate by exclusion gained 0.3 of a percentage point, from 6.6 to 6.9 percent in October and November.

Chart 1: National Inflation Rate 2010 - 2012

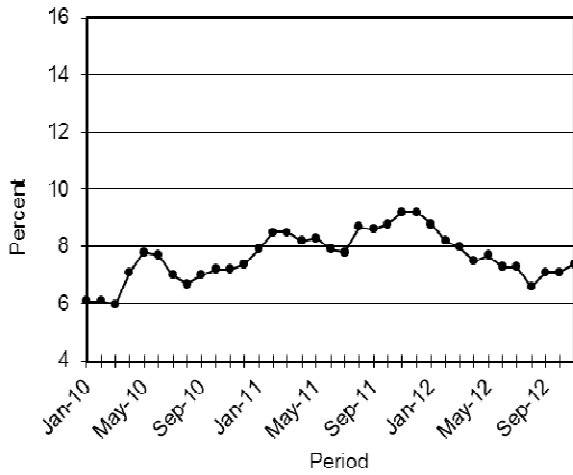


Chart 2: Monthly Changes in Cost-of-Living Index 2010 - 2012

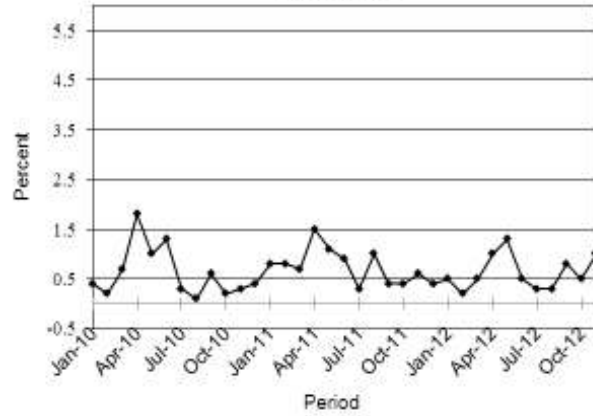


Chart 3: Non-Tradable Inflation 2010 - 2012

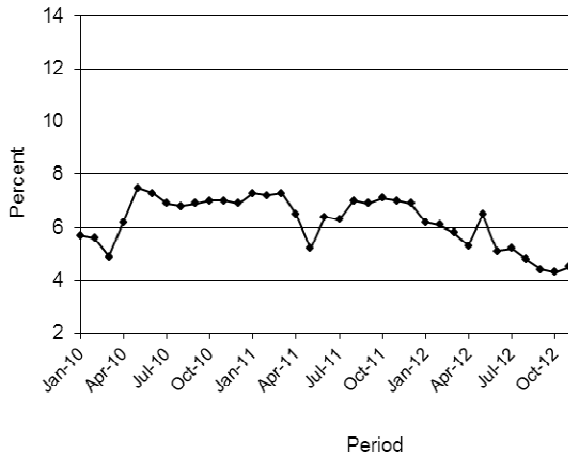
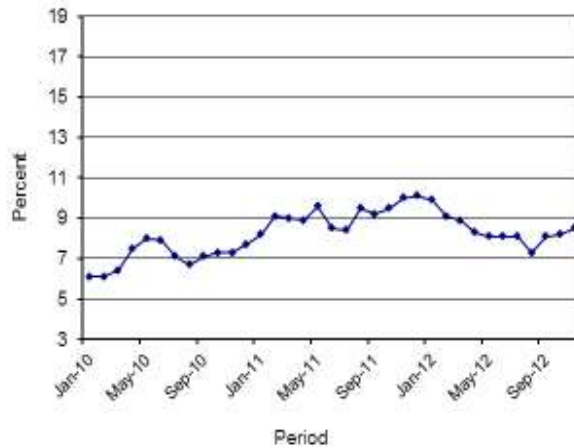


Chart 4: Tradable Inflation 2010 - 2012



*Maj*

A.N. Majelantle  
 Statistician General  
 14<sup>th</sup> December 2012

**TABLE 1: COST OF LIVING INDEX (September 2006 =100.0)**

		Food	Alcohol and Tobacco	Clothing and Footwear	Housing	Furniture etc	Health	Transport	Communication	Rec. & Culture	Education	Rest. & Hotels	Miscellaneous
Weights		21.84	9.29	7.52	11.46	6.76	2.71	18.98	3.01	2.22	3.37	3.27	9.57
(1)	(2)	(3)	(4)	(5)	(6)	(7)	(8)	(9)	(10)	(11)	(12)	(13)	(14)
<b>2010</b>	Jan	151.1	165.8	116.9	119.9	130.6	124.9	120.6	94.6	109.9	120.4	155.6	114.4
	Feb	151.1	166.0	117.3	120.0	131.2	125.2	121.0	94.6	110.3	120.4	156.5	114.6
	Mar	152.4	167.6	118.9	121.2	133.1	125.4	121.2	94.6	110.8	120.4	158.3	115.0
	Apr	154.4	174.1	119.9	121.8	134.3	127.3	123.4	95.4	111.1	120.4	162.7	119.5
	May	156.0	176.7	120.5	126.3	135.0	127.6	123.6	95.4	111.4	120.5	164.4	119.7
	Jun	156.1	177.4	121.4	126.8	137.1	127.8	130.2	96.4	111.5	120.5	165.9	120.8
	July	156.4	177.4	122.9	127.3	138.0	128.1	130.3	96.4	115.6	120.5	166.6	121.0
	Aug	156.8	177.6	123.6	127.5	138.5	128.2	129.6	96.4	115.8	120.5	167.5	121.1
	Sept	156.7	179.1	125.0	127.7	139.3	128.3	131.6	96.4	116.1	120.5	168.8	121.4
	Oct	156.7	179.7	126.3	127.9	139.6	128.4	131.7	96.4	116.5	120.5	170.6	121.5
	Nov	157.2	180.4	127.4	128.1	140.4	128.4	131.8	96.4	116.7	120.5	171.8	121.5
	Dec	157.6	182.1	127.1	128.8	141.7	128.6	132.2	96.4	116.9	120.5	171.9	121.7
<b>2011</b>	Jan	158.2	183.4	127.5	129.1	142.3	128.7	133.7	96.4	117.1	133.2	172.7	122.6
	Feb	159.1	183.9	127.9	129.4	142.9	128.8	137.5	96.4	117.6	133.2	172.9	122.6
	Mar	160.5	186.0	128.5	130.9	144.6	129.1	137.7	96.4	118.5	133.2	173.7	122.8
	Apr	164.4	188.5	131.0	131.1	145.3	133.0	139.0	96.4	123.4	133.2	175.5	125.7
	May	165.8	191.3	132.1	131.8	146.7	133.3	142.8	91.2	124.1	133.2	179.3	126.1
	Jun	166.6	191.9	133.1	137.6	148.9	133.6	143.3	91.2	124.4	133.2	182.5	126.6
	Jul	167.0	192.2	134.4	138.2	149.5	133.6	143.4	91.2	124.5	133.2	183.4	126.7
	Aug	167.9	192.4	135.1	138.9	150.4	133.7	148.7	91.2	124.7	133.2	183.7	126.8
	Sept	168.8	192.4	135.8	140.0	152.9	133.9	148.8	91.2	124.8	133.2	184.5	126.9
	Oct	169.8	192.8	136.4	140.6	153.9	136.0	149.4	91.2	125.3	133.2	184.6	127.1
	Nov	170.7	192.9	137.2	141.2	154.3	136.1	152.6	91.2	125.3	133.2	185.3	127.2
	Dec	171.8	192.8	138.8	141.8	155.2	136.4	152.6	91.2	125.4	133.2	186.0	127.2
<b>2012</b>	Jan	172.3	193.5	139.6	141.9	155.6	136.5	153.4	91.2	125.6	141.5	187.1	127.7
	Feb	173.3	193.6	140.2	142.0	155.9	136.9	153.5	91.2	125.7	141.5	187.5	127.7
	Mar	174.6	196.0	140.7	142.4	156.6	137.2	153.5	91.2	125.9	141.7	189.5	127.7
	Apr	177.0	201.2	140.9	142.4	157.5	141.0	153.8	91.7	130.2	141.7	192.7	128.2
	May	178.4	204.7	141.3	147.4	158.1	141.3	157.8	91.7	130.3	141.7	193.7	128.3
	Jun	179.6	205.2	141.9	148.6	160.1	141.5	158.2	91.7	130.4	141.7	194.9	128.4
	Jul	180.4	205.8	142.5	148.4	160.6	142.1	159.3	91.7	130.9	141.7	195.3	128.6
	Aug	181.0	206.1	144.0	148.4	161.2	142.3	159.9	91.7	131.8	141.7	196.1	128.2
	Sept	181.7	206.9	145.5	148.5	161.9	142.6	164.2	91.7	132.1	141.7	199.3	128.2
	Oct	182.8	210.7	146.0	148.4	162.4	142.7	164.4	91.7	132.3	141.7	201.0	128.3
	Nov	183.4	215.5	146.8	148.5	163.0	142.7	168.2	91.7	132.5	141.7	203.8	128.5
<b>% Change on Last month</b>		<b>0.3</b>	<b>2.3</b>	<b>0.5</b>	<b>0.1</b>	<b>0.4</b>	<b>0.0</b>	<b>2.3</b>	<b>0.0</b>	<b>0.2</b>	<b>0.0</b>	<b>1.4</b>	<b>0.2</b>

**TABLE 1: COST OF LIVING INDEX(Cont.)**

	All Items Index	National Inflation Rate	Monthly Change	Towns & Cities Index	Urban Village Index	Rural Villages Index	Annual Inflation		
		%	%	<b>47.33</b>	<b>33.76</b>	<b>18.91</b>	Towns & Cities %	Urban Villages %	Rural %
<b>2010</b> Jan	131.4	<b>6.1</b>	<b>0.4</b>	129.8	131.2	135.8	<b>6.7</b>	<b>5.9</b>	<b>5.1</b>
Feb	131.7	<b>6.1</b>	<b>0.2</b>	130.1	131.2	136.4	<b>6.6</b>	<b>5.8</b>	<b>5.4</b>
Mar	132.6	<b>6.0</b>	<b>0.7</b>	131.0	131.8	138.3	<b>6.5</b>	<b>5.2</b>	<b>5.9</b>
Apr	135.0	<b>7.1</b>	<b>1.8</b>	133.5	134.0	140.4	<b>7.9</b>	<b>6.3</b>	<b>6.6</b>
May	136.3	<b>7.8</b>	<b>1.0</b>	134.8	135.4	141.6	<b>8.7</b>	<b>7.2</b>	<b>6.9</b>
Jun	138.1	<b>7.7</b>	<b>1.3</b>	137.0	137.0	142.8	<b>8.5</b>	<b>7.0</b>	<b>7.0</b>
July	138.6	<b>7.0</b>	<b>0.3</b>	137.4	137.6	143.2	<b>7.9</b>	<b>6.4</b>	<b>6.2</b>
Aug	138.7	<b>6.7</b>	<b>0.1</b>	137.8	137.6	142.7	<b>7.7</b>	<b>5.9</b>	<b>5.6</b>
Sept	139.4	<b>7.0</b>	<b>0.6</b>	138.6	138.7	143.0	<b>8.0</b>	<b>6.4</b>	<b>5.6</b>
Oct	139.7	<b>7.2</b>	<b>0.2</b>	138.8	139.1	143.0	<b>8.0</b>	<b>6.8</b>	<b>5.9</b>
Nov	140.1	<b>7.2</b>	<b>0.3</b>	139.5	139.3	143.2	<b>8.2</b>	<b>6.7</b>	<b>5.4</b>
Dec	140.6	<b>7.4</b>	<b>0.4</b>	139.8	139.9	144.0	<b>8.1</b>	<b>7.2</b>	<b>6.2</b>
<b>2011</b> Jan	141.8	<b>7.9</b>	<b>0.8</b>	141.3	141.0	144.5	<b>8.8</b>	<b>7.5</b>	<b>6.4</b>
Feb	142.9	<b>8.5</b>	<b>0.8</b>	142.4	142.2	145.5	<b>9.5</b>	<b>8.4</b>	<b>6.6</b>
Mar	143.8	<b>8.5</b>	<b>0.7</b>	143.2	143.2	146.6	<b>9.3</b>	<b>8.7</b>	<b>6.0</b>
Apr	146.0	<b>8.2</b>	<b>1.5</b>	145.3	145.5	148.8	<b>8.9</b>	<b>8.5</b>	<b>6.0</b>
May	147.6	<b>8.3</b>	<b>1.1</b>	146.9	146.9	150.5	<b>9.0</b>	<b>8.5</b>	<b>6.2</b>
Jun	149.0	<b>7.9</b>	<b>0.9</b>	148.4	148.1	152.0	<b>8.3</b>	<b>8.1</b>	<b>6.4</b>
Jul	149.3	<b>7.8</b>	<b>0.3</b>	148.9	148.3	152.3	<b>8.4</b>	<b>7.7</b>	<b>6.3</b>
Aug	150.8	<b>8.7</b>	<b>1.0</b>	150.4	149.8	153.4	<b>9.1</b>	<b>8.9</b>	<b>7.5</b>
Sept	151.4	<b>8.6</b>	<b>0.4</b>	150.9	150.6	153.9	<b>8.9</b>	<b>8.6</b>	<b>7.6</b>
Oct	152.0	<b>8.8</b>	<b>0.4</b>	151.4	151.5	154.6	<b>9.0</b>	<b>8.9</b>	<b>8.1</b>
Nov	153.0	<b>9.2</b>	<b>0.6</b>	152.4	152.7	155.0	<b>9.3</b>	<b>9.6</b>	<b>8.2</b>
Dec	153.5	<b>9.2</b>	<b>0.4</b>	152.9	153.1	155.9	<b>9.4</b>	<b>9.4</b>	<b>8.3</b>
<b>2012</b> Jan	154.3	<b>8.8</b>	<b>0.5</b>	153.5	154.0	157.0	<b>8.6</b>	<b>9.2</b>	<b>8.6</b>
Feb	154.7	<b>8.2</b>	<b>0.2</b>	153.7	154.4	157.6	<b>8.0</b>	<b>8.6</b>	<b>8.3</b>
Mar	155.4	<b>8.0</b>	<b>0.5</b>	154.3	155.1	158.6	<b>7.8</b>	<b>8.3</b>	<b>8.2</b>
Apr	156.9	<b>7.5</b>	<b>1.0</b>	156.0	156.6	159.8	<b>7.3</b>	<b>7.7</b>	<b>7.4</b>
May	159.0	<b>7.7</b>	<b>1.3</b>	158.6	158.2	161.3	<b>8.0</b>	<b>7.7</b>	<b>7.2</b>
Jun	159.8	<b>7.3</b>	<b>0.5</b>	159.3	158.9	162.5	<b>7.4</b>	<b>7.3</b>	<b>6.9</b>
Jul	160.3	<b>7.3</b>	<b>0.3</b>	159.7	159.5	163.2	<b>7.3</b>	<b>7.6</b>	<b>7.1</b>
Aug	160.8	<b>6.6</b>	<b>0.3</b>	160.0	160.2	163.6	<b>6.4</b>	<b>6.9</b>	<b>6.6</b>
Sept	162.1	<b>7.1</b>	<b>0.8</b>	161.9	161.2	164.2	<b>7.2</b>	<b>7.0</b>	<b>6.7</b>
Oct	162.8	<b>7.1</b>	<b>0.5</b>	162.6	161.7	165.3	<b>7.5</b>	<b>6.8</b>	<b>6.9</b>
Nov	164.4	<b>7.4</b>	<b>1.0</b>	164.2	163.1	167.2	<b>7.7</b>	<b>6.8</b>	<b>7.9</b>
<b>% Change on last month</b>	<b>1.0</b>			<b>0.9</b>	<b>0.9</b>	<b>1.1</b>			

**Table 2: National Cost-of-Living Group & Section Indices (September 2006 = 100.0)**

Group Section	Weights	This month	Last month	3 months ago	6 months ago	12 months ago	Percentage Change on:			
		Nov 2012	Oct 2012	Aug 2012	May 2012	Nov 2011	Last month	3 months ago	6 months ago	12 months ago
<b>1 Food &amp; Non-Alcoholic Beverages</b>	<b>21.84</b>	<b>183.4</b>	<b>182.8</b>	<b>181.0</b>	<b>178.4</b>	<b>170.7</b>	<b>0.3</b>	<b>1.3</b>	<b>2.8</b>	<b>7.4</b>
1.1 Bread & Cereals	6.51	182.0	181.5	180.4	177.3	164.6	0.3	0.9	2.6	10.6
1.2 Meat (Fresh, Chilled & Frozen)	3.15	187.6	186.4	184.3	183.5	176.2	0.7	1.8	2.2	6.5
1.3 Fish (Fresh, Chilled & Frozen)	0.20	184.0	183.6	180.9	176.8	170.2	0.2	1.7	4.1	8.1
1.4 Milk, Cheese & Milk Products	2.19	184.6	183.4	183.1	180.4	178.1	0.7	0.8	2.3	3.7
1.5 Oils & Fats	0.90	219.9	218.9	216.9	213.8	206.3	0.4	1.4	2.9	6.6
1.6 Fruit	0.67	130.4	129.8	128.0	125.3	118.9	0.4	1.8	4.0	9.7
1.7 Vegetables	1.94	182.6	183.7	179.3	175.2	173.7	(0.6)	1.9	4.2	5.1
1.8 Sugar, Jam, Honey, Chocolate & Confectionery	1.36	187.1	186.5	185.3	183.0	174.8	0.3	1.0	2.3	7.0
1.9 Food not else where Classified	2.36	184.5	183.4	180.8	178.6	173.8	0.6	2.0	3.3	6.1
1.10 Coffee, Tea & Cocoa	0.63	202.1	202.2	201.7	197.0	190.1	(0.0)	0.2	2.6	6.3
1.11 Mineral Waters, Soft Drinks, Fruits & Veg. Juices	1.94	172.0	171.6	169.6	167.2	159.2	0.3	1.4	2.9	8.1
<b>2 Alcoholic Beverages, Tobacco &amp; Narcotics</b>	<b>9.29</b>	<b>215.5</b>	<b>210.7</b>	<b>206.1</b>	<b>204.7</b>	<b>192.9</b>	<b>2.3</b>	<b>4.6</b>	<b>5.3</b>	<b>11.7</b>
2.1 Alcoholic Beverages	8.09	216.2	210.7	205.9	204.7	192.7	2.6	5.0	5.6	12.2
2.2 Tobacco	1.20	211.4	210.2	208.0	204.8	194.4	0.6	1.6	3.2	8.7
<b>3 Clothing and Footwear</b>	<b>7.52</b>	<b>146.8</b>	<b>146.0</b>	<b>144.0</b>	<b>141.3</b>	<b>137.2</b>	<b>0.5</b>	<b>2.0</b>	<b>3.9</b>	<b>7.0</b>
3.1 Clothing	3.33	166.0	165.1	162.7	160.9	155.5	0.5	2.0	3.1	6.7
3.2 Other articles of Clothing	1.82	133.0	132.5	130.7	126.7	122.5	0.4	1.8	5.0	8.6
3.3 Cleaning, Repair & Hire	0.03	181.1	180.6	179.0	173.7	167.1	0.2	1.2	4.2	8.3
3.4 Footwear	2.34	129.7	128.9	127.2	124.3	121.9	0.6	2.0	4.3	6.3
<b>4 Housing, Water, Electr. Gas &amp; Other Fuels</b>	<b>11.46</b>	<b>148.5</b>	<b>148.4</b>	<b>148.4</b>	<b>147.4</b>	<b>141.2</b>	<b>0.1</b>	<b>0.1</b>	<b>0.8</b>	<b>5.2</b>
4.1 Rent paid by Tenants	5.68	131.1	131.1	130.8	128.4	126.8	0.0	0.2	2.1	3.4
4.2 Materials for Maintenance & Repair of dwellings	2.57	144.1	143.9	143.5	142.0	140.6	0.1	0.4	1.5	2.5
4.3 Water Supply & Misc. Services	1.14	151.4	151.4	151.4	151.4	102.2	0.0	0.0	0.0	48.2
4.4 Electricity Gas and other Fuels	2.06	200.4	200.0	201.0	204.0	203.0	0.2	(0.3)	(1.7)	(1.3)
<b>5 Furnishing, H/H Equipment &amp; Routine Maintenance</b>	<b>6.76</b>	<b>163.0</b>	<b>162.4</b>	<b>161.2</b>	<b>158.1</b>	<b>154.3</b>	<b>0.4</b>	<b>1.2</b>	<b>3.1</b>	<b>5.7</b>
5.1 Furniture & Furnishing	2.31	137.3	137.0	135.9	134.0	129.9	0.2	1.0	2.5	5.7
5.2 Carpets & Other Floor Coverings	0.04	149.4	149.3	147.8	146.6	144.6	0.1	1.1	1.9	3.3
5.3 Household Textiles	0.44	151.1	150.8	149.5	147.6	143.3	0.2	1.1	2.4	5.5
5.4 Household Appliances	0.69	139.1	138.4	136.4	134.3	131.3	0.5	1.9	3.5	5.9
5.5 Glassware, Tableware & Household Utensils	0.44	172.6	172.1	168.7	162.8	158.0	0.3	2.3	6.0	9.2
5.6 Small Tools, Miscellaneous Accessories	0.06	168.7	168.1	167.4	166.7	164.0	0.3	0.8	1.2	2.8
5.7 Goods & Services for H/Hold Maintenance	2.79	190.6	189.8	188.8	184.9	181.1	0.4	1.0	3.1	5.3

**Table 2: National Cost-of-Living Group & Section Indices (September 2006 = 100.0)  
(Cont.)**

Group Section	Weights	This month	Last month	3 months ago	6 months ago	12 months ago	Percentage Change on:			
		Nov 2012	Oct 2012	Aug 2012	May 2012	Nov 2011	Last month	3 months ago	6 months ago	12 months ago
<b>6 Health</b>	<b>2.71</b>	<b>142.7</b>	<b>142.7</b>	<b>142.3</b>	<b>141.3</b>	<b>136.1</b>	<b>0.0</b>	<b>0.3</b>	<b>1.0</b>	<b>4.9</b>
6.1 Medical Products, App. & Equip.	0.35	168.3	168.0	165.9	162.0	150.9	0.1	1.4	3.9	11.6
6.2 Out-patient Services	0.66	148.4	148.3	148.0	145.9	131.8	0.1	0.3	1.8	12.6
6.3 Hospital Services	1.71	135.3	135.3	135.3	135.3	134.7	0.0	0.0	0.0	0.4
<b>7 Transport</b>	<b>18.98</b>	<b>168.2</b>	<b>164.4</b>	<b>159.9</b>	<b>157.8</b>	<b>152.6</b>	<b>2.3</b>	<b>5.2</b>	<b>6.6</b>	<b>10.2</b>
7.1 Purchase of Vehicles	5.89	151.3	151.2	150.9	148.9	146.7	0.0	0.3	1.6	3.1
7.2 Operation of Personal Transport	10.92	178.7	172.1	164.6	161.9	154.2	3.9	8.6	10.4	15.9
7.3 Transport Services	2.17	161.1	161.1	161.1	160.9	160.3	0.0	0.0	0.1	0.5
<b>8 Communication</b>	<b>3.01</b>	<b>91.7</b>	<b>91.7</b>	<b>91.7</b>	<b>91.7</b>	<b>91.2</b>	<b>0.0</b>	<b>0.0</b>	<b>0.0</b>	<b>0.6</b>
8.1 Postal Services	0.04	209.9	209.9	209.9	209.9	170.8	0.0	0.0	0.0	22.9
8.2 Telephone & Telefax Equipment	0.74	66.6	66.6	66.6	66.6	66.6	0.0	0.0	0.0	0.0
8.3 Telephone & Telefax Services	2.23	98.0	98.0	98.0	97.9	97.9	0.0	0.0	0.0	0.0
<b>9 Recreation &amp; Culture</b>	<b>2.22</b>	<b>132.5</b>	<b>132.3</b>	<b>131.8</b>	<b>130.3</b>	<b>125.3</b>	<b>0.2</b>	<b>0.6</b>	<b>1.7</b>	<b>5.8</b>
9.1 Audio Visual, Photographic & Info. Proce. Equip.	1.09	105.5	105.3	104.7	103.6	102.4	0.2	0.7	1.8	3.1
9.2 Other Recreational Items & Equip.	0.18	158.4	157.8	156.5	150.6	148.8	0.3	1.2	5.1	6.4
9.3 Recreational & Cultural Services	0.76	149.2	149.0	148.9	148.4	137.5	0.2	0.2	0.6	8.5
9.4 Newspapers, Books & Stationary	0.19	194.2	193.9	192.9	190.1	183.5	0.1	0.7	2.1	5.8
<b>10 Education</b>	<b>3.37</b>	<b>141.7</b>	<b>141.7</b>	<b>141.7</b>	<b>141.7</b>	<b>133.2</b>	<b>0.0</b>	<b>0.0</b>	<b>0.0</b>	<b>6.4</b>
10.1 Pre-Primary & Primary Education	1.10	173.5	173.5	173.5	173.5	154.5	0.0	0.0	0.0	12.3
10.2 Secondary & Tertiary Education	2.26	126.2	126.2	126.2	126.2	122.8	0.0	0.0	0.0	2.8
<b>11 Restaurants &amp; Hotels</b>	<b>3.27</b>	<b>203.8</b>	<b>201.0</b>	<b>196.1</b>	<b>193.7</b>	<b>185.3</b>	<b>1.4</b>	<b>3.9</b>	<b>5.2</b>	<b>10.0</b>
11.1 Restaurants, Cafes and the Like	3.08	206.6	203.6	198.5	196.1	187.7	1.5	4.1	5.4	10.1
11.2 Accommodation Services	0.19	157.5	157.4	156.4	153.7	146.4	0.1	0.7	2.5	7.5
<b>12 Miscellaneous Goods &amp; Services</b>	<b>9.57</b>	<b>128.5</b>	<b>128.3</b>	<b>128.2</b>	<b>128.3</b>	<b>127.2</b>	<b>0.2</b>	<b>0.3</b>	<b>0.2</b>	<b>1.1</b>
12.1 Personal Care	0.66	153.8	153.3	152.3	149.2	146.9	0.3	1.0	3.1	4.7
12.2 Personal Effects N.E.C.	0.04	132.0	131.6	131.2	127.2	123.1	0.3	0.6	3.8	7.3
12.3 Social Protection	0.14	147.8	147.8	147.8	147.8	146.8	0.0	0.0	0.0	0.7
12.4 Insurance	6.32	128.9	128.9	128.9	129.6	128.9	0.0	0.0	(0.6)	(0.0)
12.5 Financial Services	0.18	144.3	143.8	142.4	139.7	135.9	0.4	1.4	3.3	6.2
12.6 Taxes Licences, Fees	2.24	117.4	116.6	116.6	116.3	114.4	0.6	0.6	0.9	2.6
<b>All-Items Index</b>	<b>100.0</b>	<b>164.4</b>	<b>162.8</b>	<b>160.8</b>	<b>159.0</b>	<b>153.0</b>	<b>1.0</b>	<b>2.3</b>	<b>3.4</b>	<b>7.4</b>



**TABLE 3: COST-OF-LIVING INDEX BY TRADABILITY (September 2006 = 100.0)**

	<b>All Items</b>		<b>Non-Tradable</b>		<b>Domestic Tradable</b>		<b>Imported Tradable</b>		<b>All Tradable</b>	
	<b>Index</b>	<b>Inflation</b>	<b>Index</b>	<b>Inflation</b>	<b>Index</b>	<b>Inflation</b>	<b>Index</b>	<b>Inflation</b>	<b>Index</b>	<b>Inflation</b>
<b>Weights</b>	<b>100.00</b>		<b>30.92</b>		<b>23.91</b>		<b>45.17</b>		<b>69.08</b>	
<b>2010</b>										
Jan	131.4	6.1	123.8	5.7	149.3	3.0	127.2	8.5	134.6	6.1
Feb	131.7	6.1	124.0	5.6	149.5	2.2	127.4	9.0	134.9	6.1
Mar	132.6	6.0	124.6	4.9	150.5	2.0	128.7	9.3	136.0	6.4
Apr	135.0	7.1	126.9	6.2	153.7	3.5	130.6	10.1	138.3	7.5
May	136.3	7.8	128.7	7.5	154.9	4.2	131.7	10.4	139.5	8.0
Jun	138.1	7.7	129.7	7.3	154.8	4.2	135.1	10.3	141.6	7.9
July	138.6	7.0	129.9	6.9	155.3	3.8	135.7	9.2	142.2	7.1
Aug	138.7	6.7	130.0	6.8	155.3	3.8	135.9	8.5	142.4	6.7
Sept	139.4	7.0	130.9	6.9	155.5	4.3	136.8	8.8	143.1	7.1
Oct	139.7	7.2	131.0	7.0	155.6	4.3	137.3	9.1	143.4	7.3
Nov	140.1	7.2	131.2	7.0	155.9	4.3	137.9	9.0	144.0	7.3
Dec	140.6	7.4	131.6	6.9	156.5	5.0	138.4	9.3	144.5	7.7
<b>2011</b>										
Jan	141.8	7.9	132.8	7.3	158.2	5.9	139.2	9.5	145.6	8.2
Feb	142.9	8.5	132.9	7.2	158.9	6.2	141.3	10.9	147.2	9.1
Mar	143.8	8.5	133.7	7.3	160.1	6.4	142.2	10.5	148.2	9.0
Apr	146.0	8.2	135.2	6.5	162.2	5.5	144.8	10.9	150.6	8.9
May	147.6	8.3	135.3	5.2	163.5	5.5	147.6	12.1	152.9	9.6
Jun	149.0	7.9	138.0	6.4	164.8	6.5	148.1	9.6	153.6	8.5
Jul	149.3	7.8	138.0	6.3	165.4	6.5	148.6	9.5	154.2	8.4
Aug	150.8	8.7	139.0	7.0	165.7	6.7	150.9	11.1	155.8	9.5
Sept	151.4	8.6	139.9	6.9	166.3	6.9	151.3	10.6	156.3	9.2
Oct	152.0	8.8	140.3	7.1	167.0	7.4	152.1	10.8	157.0	9.5
Nov	153.0	9.2	140.4	7.0	167.5	7.4	153.9	11.6	158.4	10.0
Dec	153.5	9.2	140.7	6.9	168.0	7.4	154.6	11.8	159.1	10.1
<b>2012</b>										
Jan	154.3	8.8	141.1	6.2	169.6	7.2	155.3	11.5	160.0	9.9
Feb	154.7	8.2	141.0	6.1	170.4	7.3	155.7	10.2	160.6	9.1
Mar	155.4	8.0	141.4	5.8	172.2	7.6	156.1	9.8	161.4	8.9
Apr	156.9	7.5	142.4	5.3	176.0	8.5	156.7	8.2	163.2	8.3
May	159.0	7.7	144.2	6.5	178.0	8.9	158.9	7.7	165.3	8.1
Jun	159.8	7.3	145.0	5.1	178.7	8.4	159.7	7.8	166.0	8.1
Jul	160.3	7.3	145.2	5.2	179.0	8.2	160.5	8.0	166.7	8.1
Aug	160.8	6.6	145.7	4.8	179.3	8.2	161.1	6.7	167.2	7.3
Sept	162.1	7.1	146.1	4.4	179.9	8.2	163.4	8.0	168.9	8.1
Oct	162.8	7.1	146.3	4.3	181.6	8.7	164.0	7.8	169.9	8.2
Nov	164.4	7.4	146.7	4.5	183.7	9.7	165.9	7.8	172.0	8.5
<b>% Change on last month</b>	<b>1.0</b>		<b>0.3</b>		<b>1.2</b>		<b>1.2</b>		<b>1.2</b>	

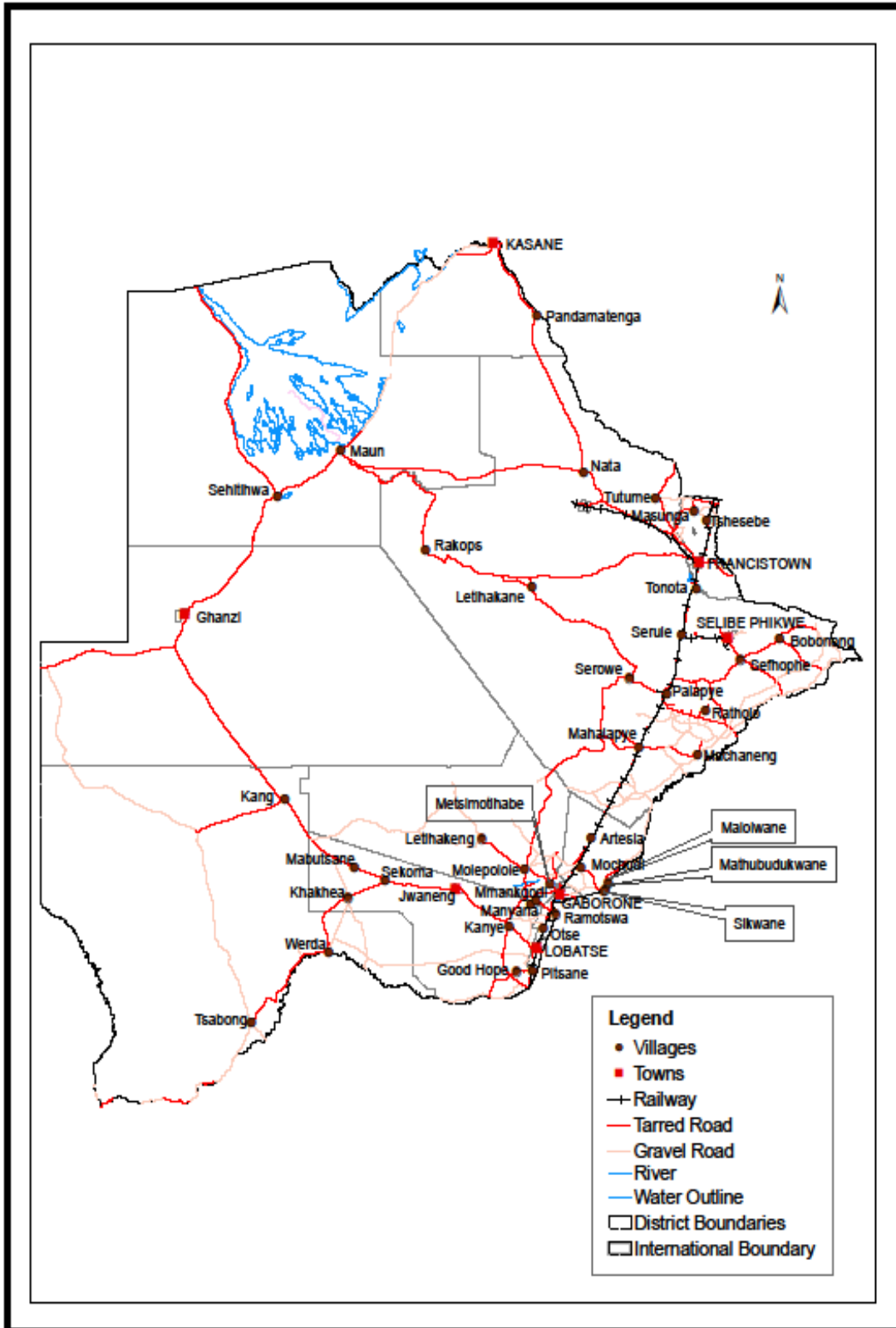
**TABLE 4: Core Inflation Rates by Exclusion and Trimmed Mean**

Year	Month	Consumer Price Index (Trimmed Mean) (September 2006 = 100)	Core Monthly Inflation Rate (Trimmed Mean) (percentage)	Consumer Price Index (Excluding Administered Prices) (September 2006 = 100)	Core Monthly Inflation (Excluding Administered Prices) (percentage)
<b>2010</b>					
	Jan	129.7	<b>6.7</b>	135.2	<b>5.9</b>
	Feb	129.0	<b>6.7</b>	135.5	<b>5.8</b>
	Mar	130.0	<b>6.5</b>	136.7	<b>5.6</b>
	Apr	133.1	<b>7.7</b>	139.1	<b>6.8</b>
	May	133.2	<b>8.3</b>	140.2	<b>7.2</b>
	Jun	135.0	<b>8.1</b>	141.0	<b>6.9</b>
	July	136.6	<b>7.6</b>	141.5	<b>6.1</b>
	Aug	135.4	<b>7.2</b>	142.0	<b>6.3</b>
	Sept	136.8	<b>7.4</b>	142.7	<b>6.5</b>
	Oct	137.2	<b>7.6</b>	143.1	<b>6.8</b>
	Nov	137.9	<b>7.6</b>	143.6	<b>6.7</b>
	Dec	137.5	<b>7.7</b>	144.2	<b>7.1</b>
<b>2011</b>					
	Jan	139.6	<b>8.0</b>	145.5	<b>7.6</b>
	Feb	142.1	<b>8.6</b>	146.0	<b>7.7</b>
	Mar	142.6	<b>8.4</b>	147.1	<b>7.6</b>
	Apr	143.4	<b>8.0</b>	149.4	<b>7.4</b>
	May	148.7	<b>8.2</b>	150.5	<b>7.3</b>
	Jun	148.8	<b>7.6</b>	151.4	<b>7.4</b>
	July	150.3	<b>7.4</b>	151.9	<b>7.3</b>
	Aug	153.7	<b>8.4</b>	152.5	<b>7.4</b>
	Sept	154.8	<b>8.1</b>	153.2	<b>7.4</b>
	Oct	155.6	<b>8.3</b>	154.0	<b>7.6</b>
	Nov	156.3	<b>8.5</b>	154.4	<b>7.5</b>
	Dec	156.9	<b>8.5</b>	155.1	<b>7.5</b>
<b>2012</b>					
	Jan	157.9	<b>8.1</b>	156.0	<b>7.2</b>
	Feb	158.0	<b>7.8</b>	156.5	<b>7.2</b>
	Mar	159.2	<b>7.6</b>	157.4	<b>7.0</b>
	Apr	158.9	<b>7.3</b>	159.2	<b>6.6</b>
	May	160.7	<b>7.3</b>	160.2	<b>6.5</b>
	Jun	163.9	<b>6.8</b>	161.2	<b>6.4</b>
	Jul	164.5	<b>6.8</b>	161.8	<b>6.5</b>
	Aug	164.0	<b>6.3</b>	162.5	<b>6.6</b>
	Sept	165.6	<b>6.5</b>	163.2	<b>6.5</b>
	Oct	163.7	<b>6.7</b>	164.1	<b>6.6</b>
	Nov	165.0	<b>7.1</b>	165.1	<b>6.9</b>

**Table 5: Average Annual Inflation Rates 2008 - 2011 ( September 2006=100)**

		YEAR			
Group	Weights	2008	2009	2010	2011
1 Food & Non-Alcoholic Beverages	<i>21.84</i>	20.2	14.7	3.6	6.9
2 Alcoholic Beverages, Tobacco & Narcotics	<i>9.29</i>	13.2	35.2	7.1	8.4
3 Clothing and Footwear	<i>7.52</i>	2.0	8.4	8.0	8.9
4 Housing, Water, Electricity, Gas & Other Fuels	<i>11.46</i>	8.1	4.8	6.4	8.4
5 Furnishing, H/H Equipment & Routine Maintenance	<i>6.76</i>	6.0	11.9	9.4	9.0
6 Health	<i>2.71</i>	11.3	5.5	2.7	4.5
7 Transport	<i>18.98</i>	21.2	(8.4)	12.1	13.2
8 Communication	<i>3.01</i>	(0.3)	(0.3)	1.2	(3.0)
9 Recreation & Culture	<i>2.22</i>	2.3	5.0	6.0	8.3
10 Education	<i>3.37</i>	3.9	3.9	5.8	10.6
11 Restaurants & Hotels	<i>3.27</i>	12.7	18.8	9.0	9.3
12 Miscellaneous Goods & Services	<i>9.57</i>	4.9	3.8	7.0	5.3
<b>All-Items Index (National Average Annual Inflation)</b>	<b><i>100.0</i></b>	<b>12.6</b>	<b>8.2</b>	<b>6.9</b>	<b>8.5</b>

Prices Collection Coverage for Botswana Consumer Price Index (CPI) - 2012



## Glossary

**Consumer Price Index (CPI)** is an index which measures price changes in goods and services with reference to a base period.

**Inflation** is a measurement of prices movement of goods and services in a particular country.

**Domestic Tradable** refers to the goods and services which a country (Botswana) can export to other countries.

**Imported Tradable** represents the goods and services which a country (Botswana) imports from other countries (trading partners).

**Non-Tradable** refers to the goods and services which a country cannot either export or import to other countries.

**All –Tradable** refers to the total of **Domestic** and **Imported tradable**.

**Trimmed Mean Core Inflation**- attempts to remove 8 percent (by weight) of the commodity sub-groups with the largest price changes at each of the ends of an ordered series of price changes in any given month.

**Core inflation by Exclusion** is a measure used to remove the volatility inherent in prices that are only adjusted periodically and not always in response to currently prevailing market forces.