

CONSUMER PRICE INDEX

August 2013

STATISTICS BOTSWANA

Copyrights©Statistics Botswana 2013

Contact Statistician:

Phaladi Labobedi

Tel: (267) 319 0714

Fax: (267) 3952 201

Statistics Botswana. Private Bag 0024 Botswana
Tel: (267) 367 1300. **Fax:** (267) 395 2201. **Email:** csobots.@gov.bw **Website:** www.cso.gov.bw

CONTENTS

COMMENTARY

Section 1: Headline Inflation

Section 2: Core Inflation

CHARTS

- 1. National Rates of Inflation, January 2011 – August 2013**
- 2. Monthly Changes in the Cost-of-Living Index, January 2011 – August 2013**
- 3. Non-Tradable Inflation Rates, January 2011 – August 2013**
- 4. Tradable Inflation Rates, January 2011 - August 2013**

TABLES

- 1. Cost-of-Living Index Series (January 2011 – August 2013)**
- 2. National Cost-of-Living Group and Section Indices**
- 3. Cost-of-Living Index by Tradability (January 2011 – August 2013)**
- 4. Core Inflation Rates**
- 5. Annual Average Inflation Rates 2008-2012**

GLOSSARY

COMMENTARY

Section 1: Headline Inflation

In August 2013, national annual inflation rate was 5.6 percent, a decrease of 0.1 of a percentage point from 5.7 percent recorded in July 2013. The annual rate of 5.6 percent realised in August 2013 was also lower than the 6.6 percent recorded during the same month in 2012. The decrease on the overall annual rate was mainly due to stable prices of Food & Non-Alcoholic Beverages among others. Comparison of inflation rate among regions from July to August, showed that urban villages' went down to 5.3 from 5.5 percent, while cities and towns' and rural villages' remained unchanged at 5.5 and 6.4 percent respectively.

The August 2013 national Consumer Price Index was at 169.8, an increase of 0.2 percent on the July 2013 index of 169.4. The rural villages' index advanced from 173.5 to 174.0, recording an increase of 0.3 percent. The Urban villages' index realized a rise of 0.2 percent, from 168.3 to 168.7 between the two months, while the cities and towns' index moved from 168.5 to 168.8 between July and August, registering an increase of 0.2 percent.

Group indices were stable between July and August, recording changes of less than 1.0 percent except for Restaurants & Hotels group index which increased by 1.0 percent.

The Restaurants & Hotels group index registered an increase of 1.0 percent from 210.8 in July to 213.0 in August. The increase was a result of the constituent section index of a Restaurants, Café's and the Like, which increased by 1.1 percent.

The Food & Non-Alcoholic Beverages group index upped from 188.8 to 189.5, registering an increase of 0.4 percent between July and August. The increase was attributed to the general increase in food prices especially Vegetables (1.1 percent), Sugar, Jam, Honey, Chocolate & Confectionery (1.1 percent) and Milk, Cheese & Milk Products (0.6 percent).

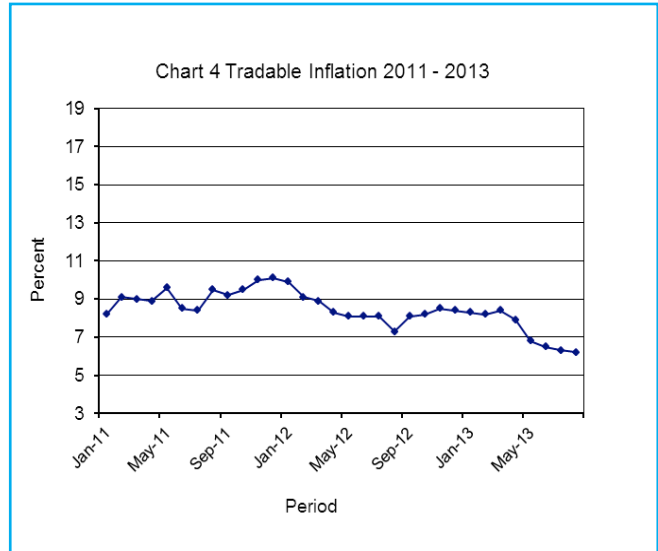
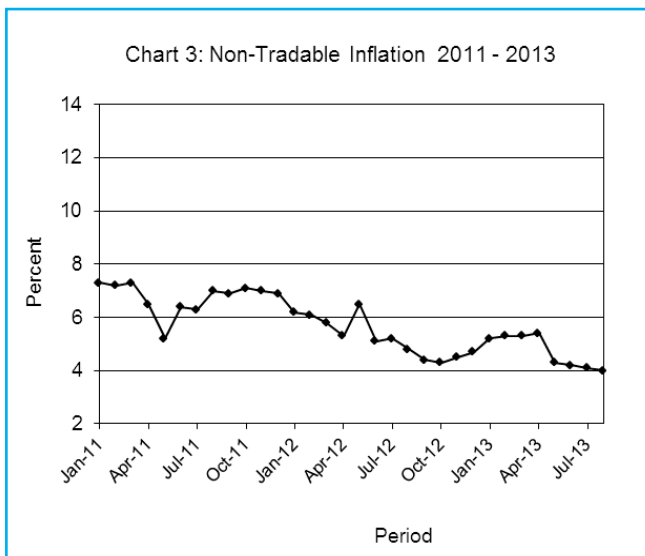
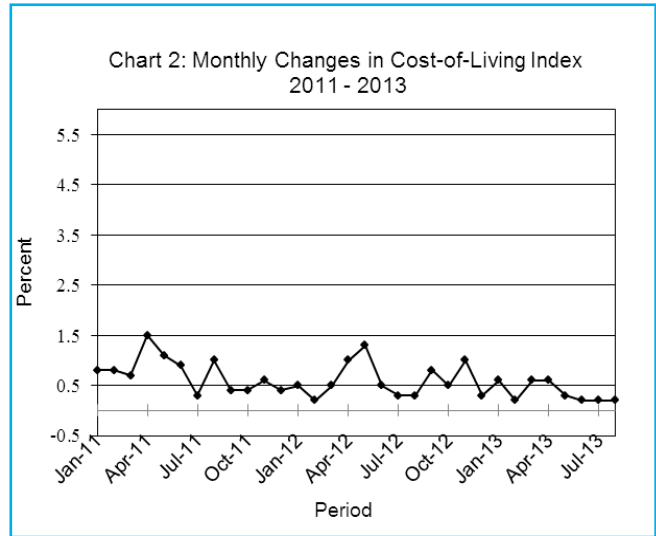
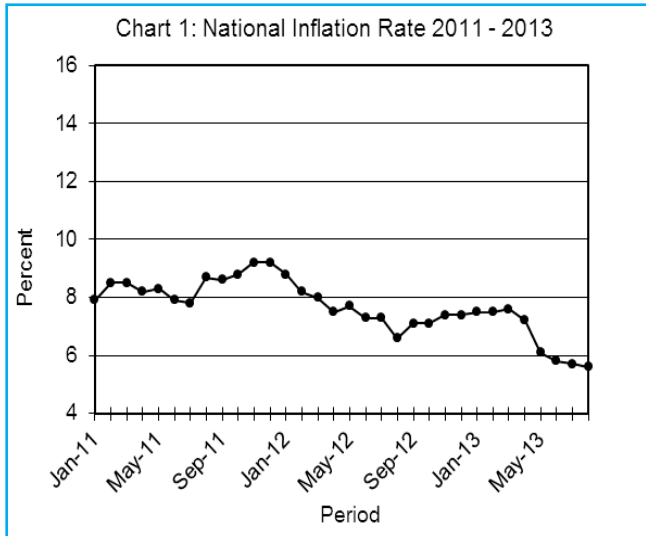
The Clothing & Footwear group index recorded an increase of 0.3 percent from 152.9 in July to 153.3 in August. All section indices recorded an increase, notably; Footwear (0.7 percent) and Cleaning, Repair & Hire (0.6 percent).

All-Tradable inflation rate registered a decrease of 0.1 of a percentage point from 6.3 percent in July to 6.2 percent in August. The Imported Tradable inflation rate recorded a drop of 0.2 of a percentage point, from 6.0 percent in July to 5.8 percent in August. The Non-Tradable inflation went down by 0.1 of a percentage point in August, registering 4.0 percent against 4.1 percent in July, while the Domestic Tradable inflation rate remained unchanged at 6.8 percent between July and August.

The All-Tradable index moved from 177.2 in July to 177.6 in August, recording an increase of 0.2 percent. The Imported Tradable index moved from 170.1 to 170.5, an increase of 0.3 percent. The Domestic Tradable index moved from 191.1 to 191.4, an increase of 0.2 percent, whereas the Non-Tradable index went up by 0.2 percent, from 151.2 in July to 151.4 in August.

Section 2: Core Inflation

The Trimmed Mean Core Inflation rate stood at 5.4 percent in August, a decrease of 0.1 of a percentage point on the July 2013 rate of 5.5 percent. The Core Inflation rate by exclusion went down by 0.2 of a percentage point from 5.5 percent to 5.3 percent between July and August 2013.



A.N. Majelantle
Statistician General

13th September 2013

TABLE 1: COST OF LIVING INDEX (September 2006 =100.0)

		Food	Alcohol and Tobacco	Clothing and Footwear	Housing	Furniture etc	Health	Transport	Communi- cation	Rec. & Culture	Educa- tion	Rest. & Hotels	Miscella- neous
Weights		21.84	9.29	7.52	11.46	6.76	2.71	18.98	3.01	2.22	3.37	3.27	9.57
(1)	(2)	(3)	(4)	(5)	(6)	(7)	(8)	(9)	(10)	(11)	(12)	(13)	(14)
2011	Jan	158.2	183.4	127.5	129.1	142.3	128.7	133.7	96.4	117.1	133.2	172.7	122.6
	Feb	159.1	183.9	127.9	129.4	142.9	128.8	137.5	96.4	117.6	133.2	172.9	122.6
	Mar	160.5	186.0	128.5	130.9	144.6	129.1	137.7	96.4	118.5	133.2	173.7	122.8
	Apr	164.4	188.5	131.0	131.1	145.3	133.0	139.0	96.4	123.4	133.2	175.5	125.7
	May	165.8	191.3	132.1	131.8	146.7	133.3	142.8	91.2	124.1	133.2	179.3	126.1
	Jun	166.6	191.9	133.1	137.6	148.9	133.6	143.3	91.2	124.4	133.2	182.5	126.6
	Jul	167.0	192.2	134.4	138.2	149.5	133.6	143.4	91.2	124.5	133.2	183.4	126.7
	Aug	167.9	192.4	135.1	138.9	150.4	133.7	148.7	91.2	124.7	133.2	183.7	126.8
	Sept	168.8	192.4	135.8	140.0	152.9	133.9	148.8	91.2	124.8	133.2	184.5	126.9
	Oct	169.8	192.8	136.4	140.6	153.9	136.0	149.4	91.2	125.3	133.2	184.6	127.1
	Nov	170.7	192.9	137.2	141.2	154.3	136.1	152.6	91.2	125.3	133.2	185.3	127.2
	Dec	171.8	192.8	138.8	141.8	155.2	136.4	152.6	91.2	125.4	133.2	186.0	127.2
2012	Jan	172.3	193.5	139.6	141.9	155.6	136.5	153.4	91.2	125.6	141.5	187.1	127.7
	Feb	173.3	193.6	140.2	142.0	155.9	136.9	153.5	91.2	125.7	141.5	187.5	127.7
	Mar	174.6	196.0	140.7	142.4	156.6	137.2	153.5	91.2	125.9	141.7	189.5	127.7
	Apr	177.0	201.2	140.9	142.4	157.5	141.0	153.8	91.7	130.2	141.7	192.7	128.2
	May	178.4	204.7	141.3	147.4	158.1	141.3	157.8	91.7	130.3	141.7	193.7	128.3
	Jun	179.6	205.2	141.9	148.6	160.1	141.5	158.2	91.7	130.4	141.7	194.9	128.4
	Jul	180.4	205.8	142.5	148.4	160.6	142.1	159.3	91.7	130.9	141.7	195.3	128.6
	Aug	181.0	206.1	144.0	148.4	161.2	142.3	159.9	91.7	131.8	141.7	196.1	128.2
	Sept	181.7	206.9	145.5	148.5	161.9	142.6	164.2	91.7	132.1	141.7	199.3	128.2
	Oct	182.8	210.7	146.0	148.4	162.4	142.7	164.4	91.7	132.3	141.7	201.0	128.3
	Nov	183.4	215.5	146.8	148.5	163.0	142.7	168.2	91.7	132.5	141.7	203.8	128.5
	Dec	184.2	216.3	147.5	148.7	163.5	143.1	169.2	91.7	132.6	141.7	204.1	128.6
2013	Jan	185.2	216.9	148.0	148.8	164.0	146.8	170.0	91.7	132.6	148.4	204.6	129.2
	Feb	186.0	217.2	148.6	148.9	164.5	147.2	170.1	91.7	132.8	148.4	204.9	129.2
	Mar	187.1	222.1	149.1	149.5	165.2	147.4	170.4	91.7	133.0	148.4	205.6	129.3
	Apr	187.7	226.1	150.4	152.2	165.8	147.6	170.5	91.7	135.9	148.4	208.2	129.0
	May	188.3	226.7	151.5	152.2	166.3	147.8	170.7	91.7	136.0	148.4	210.1	129.3
	Jun	188.6	226.9	152.3	153.4	167.4	148.4	170.7	91.7	136.1	148.4	210.6	129.3
	Jul	188.8	227.2	152.9	153.5	167.9	148.7	171.2	91.7	136.3	148.4	210.8	129.6
	Aug	189.5	227.5	153.3	153.7	168.2	149.0	171.4	91.7	136.5	148.4	213.0	129.7
% Change on Last month		0.4	0.1	0.3	0.1	0.2	0.2	0.1	0.0	0.1	0.0	1.0	0.0

TABLE 1: COST OF LIVING INDEX(Cont.)-by Strata

		All	National	Monthly	Towns & Cities	Urban	Rural	Annual Inflation		
		Items	Inflation	Change	Index	Village	Villages	Towns & Cities	Urban Villages	Rural
		Index	Rate	%	47.33	33.76	18.91	%	%	%
2011	Jan	141.8	7.9	0.8	141.3	141.0	144.5	8.8	7.5	6.4
	Feb	142.9	8.5	0.8	142.4	142.2	145.5	9.5	8.4	6.6
	Mar	143.8	8.5	0.7	143.2	143.2	146.6	9.3	8.7	6.0
	Apr	146.0	8.2	1.5	145.3	145.5	148.8	8.9	8.5	6.0
	May	147.6	8.3	1.1	146.9	146.9	150.5	9.0	8.5	6.2
	Jun	149.0	7.9	0.9	148.4	148.1	152.0	8.3	8.1	6.4
	Jul	149.3	7.8	0.3	148.9	148.3	152.3	8.4	7.7	6.3
	Aug	150.8	8.7	1.0	150.4	149.8	153.4	9.1	8.9	7.5
	Sept	151.4	8.6	0.4	150.9	150.6	153.9	8.9	8.6	7.6
	Oct	152.0	8.8	0.4	151.4	151.5	154.6	9.0	8.9	8.1
	Nov	153.0	9.2	0.6	152.4	152.7	155.0	9.3	9.6	8.2
	Dec	153.5	9.2	0.4	152.9	153.1	155.9	9.4	9.4	8.3
2012	Jan	154.3	8.8	0.5	153.5	154.0	157.0	8.6	9.2	8.6
	Feb	154.7	8.2	0.2	153.7	154.4	157.6	8.0	8.6	8.3
	Mar	155.4	8.0	0.5	154.3	155.1	158.6	7.8	8.3	8.2
	Apr	156.9	7.5	1.0	156.0	156.6	159.8	7.3	7.7	7.4
	May	159.0	7.7	1.3	158.6	158.2	161.3	8.0	7.7	7.2
	Jun	159.8	7.3	0.5	159.3	158.9	162.5	7.4	7.3	6.9
	Jul	160.3	7.3	0.3	159.7	159.5	163.2	7.3	7.6	7.1
	Aug	160.8	6.6	0.3	160.0	160.2	163.6	6.4	6.9	6.6
	Sept	162.1	7.1	0.8	161.9	161.2	164.2	7.2	7.0	6.7
	Oct	162.8	7.1	0.5	162.6	161.7	165.3	7.5	6.8	6.9
	Nov	164.4	7.4	1.0	164.2	163.1	167.2	7.7	6.8	7.9
	Dec	164.9	7.4	0.3	164.3	163.9	168.4	7.5	7.1	8.0
2013	Jan	165.9	7.5	0.6	165.0	164.8	170.0	7.5	7.0	8.3
	Feb	166.2	7.5	0.2	165.2	165.0	170.7	7.5	6.9	8.3
	Mar	167.1	7.6	0.6	166.0	166.2	171.8	7.5	7.2	8.3
	Apr	168.2	7.2	0.6	167.3	167.4	172.1	7.3	6.9	7.7
	May	168.7	6.1	0.3	168.0	167.5	172.5	5.9	5.9	6.9
	Jun	169.1	5.8	0.2	168.1	168.1	173.3	5.5	5.8	6.6
	Jul	169.4	5.7	0.2	168.5	168.3	173.5	5.5	5.5	6.4
	Aug	169.8	5.6	0.2	168.8	168.7	174.0	5.5	5.3	6.4
% Change on last month		0.2			0.2	0.2	0.3			

TABLE 2: NATIONAL COST-OF-LIVING GROUP & SECTION INDICES (SEPTEMBER 2006 = 100.0)

Group Section	Weights	This	Last	3 months	6 months	12 months	Percentage Change on:			
		month Aug 2013	month Jul 2013	ago May 2013	ago Feb 2013	ago Aug 2012	Last month	3 months ago	6 months ago	12 months ago
1 Food & Non-Alcoholic Beverages	21.84	189.5	188.8	188.3	186.0	181.0	0.4	0.6	1.9	4.7
1.1 Bread & Cereals	6.51	185.5	185.3	184.8	183.6	180.4	0.1	0.4	1.0	2.8
1.2 Meat (Fresh, Chilled & Frozen)	3.15	193.8	192.9	192.4	190.8	184.3	0.5	0.7	1.6	5.2
1.3 Fish (Fresh, Chilled & Frozen)	0.20	191.7	191.0	189.3	185.6	180.9	0.4	1.3	3.3	6.0
1.4 Milk, Cheese & Milk Products	2.19	190.3	189.2	188.5	185.9	183.1	0.6	1.0	2.4	3.9
1.5 Oils & Fats	0.90	230.4	229.4	229.3	225.0	216.9	0.4	0.5	2.4	6.2
1.6 Fruit	0.67	136.9	136.5	134.7	133.2	128.0	0.2	1.6	2.7	6.9
1.7 Vegetables	1.94	192.2	190.1	191.9	188.6	179.3	1.1	0.1	1.9	7.2
1.8 Sugar, Jam, Honey, Chocolate & Confectionery	1.36	196.2	194.0	193.6	190.1	185.3	1.1	1.4	3.2	5.9
1.9 Food not else where Classified	2.36	189.4	189.3	188.3	187.4	180.8	0.0	0.6	1.1	4.8
1.10 Coffee, Tea & Cocoa	0.63	208.9	207.7	205.8	202.8	201.7	0.5	1.5	3.0	3.6
1.11 Mineral Waters, Soft Drinks, Fruits & Veg. Juices	1.94	180.6	180.4	179.6	174.0	169.6	0.1	0.6	3.8	6.5
2 Alcoholic Beverages, Tobacco & Narcotics	9.29	227.5	227.2	226.7	217.2	206.1	0.1	0.4	4.8	10.4
2.1 Alcoholic Beverages	8.09	228.3	228.2	227.8	217.7	205.9	0.0	0.2	4.9	10.9
2.2 Tobacco	1.20	222.4	220.8	219.4	213.6	208.0	0.8	1.4	4.2	6.9
3 Clothing and Footwear	7.52	153.3	152.9	151.5	148.6	144.0	0.3	1.2	3.2	6.5
3.1 Clothing	3.33	174.5	174.4	172.5	168.1	162.7	0.1	1.2	3.8	7.3
3.2 Other articles of Clothing	1.82	138.0	137.8	136.8	135.1	130.7	0.1	0.9	2.1	5.6
3.3 Cleaning, Repair & Hire	0.03	194.4	193.3	185.0	183.1	179.0	0.6	5.0	6.2	8.6
3.4 Footwear	2.34	134.5	133.5	132.5	130.8	127.2	0.7	1.4	2.8	5.7
4 Housing, Water, Electr. Gas & Other Fuels	11.46	153.7	153.5	152.2	148.9	148.4	0.1	1.0	3.2	3.6
4.1 Rent paid by Tenants	5.68	133.0	133.0	132.4	131.3	130.8	0.0	0.4	1.3	1.6
4.2 Materials for Maintenance & Repair of dwellings	2.57	147.1	147.2	146.4	145.6	143.5	(0.1)	0.5	1.0	2.4
4.3 Water Supply & Misc. Services	1.14	160.2	160.2	151.4	151.4	151.4	0.0	5.8	5.8	5.8
4.4 Electricity Gas and other Fuels	2.06	215.2	214.2	214.2	200.1	201.0	0.5	0.4	7.5	7.1
5 Furnishing, H/H Equipment & Routine Maintenance	6.76	168.2	167.9	166.3	164.5	161.2	0.2	1.1	2.3	4.4
5.1 Furniture & Furnishing	2.31	142.4	142.4	140.4	138.9	135.9	0.0	1.4	2.6	4.8
5.2 Carpets & Other Floor Coverings	0.04	152.2	151.9	151.5	150.4	147.8	0.2	0.5	1.2	3.0
5.3 Household Textiles	0.44	156.3	154.5	153.9	152.3	149.5	1.1	1.6	2.6	4.5
5.4 Household Appliances	0.69	143.1	142.4	141.0	139.6	136.4	0.5	1.5	2.5	4.9
5.5 Glassware, Tableware & Household Utensils	0.44	178.9	177.9	177.2	174.2	168.7	0.6	1.0	2.7	6.0
5.6 Small Tools, Miscellaneous Accessories	0.06	174.3	174.0	173.0	170.0	167.4	0.2	0.8	2.5	4.1
5.7 Goods & Services for H/hold Maintenance	2.79	196.0	195.9	194.3	192.2	188.8	0.0	0.9	2.0	3.8

TABLE 2: NATIONAL COST-OF-LIVING GROUP & SECTION INDICES (SEPTEMBER 2006 = 100.0) (CONT.)

Group Section	Weights	This	Last	3 months	6 months	12 months	Percentage Change on:			
		month Aug 2013	month Jul 2013	ago May 2013	ago Feb 2013	ago Aug 2012	Last month	3 months ago	6 months ago	12 months ago
6 Health	2.71	149.0	148.7	147.8	147.2	142.3	0.2	0.8	1.2	4.7
6.1 Medical Products, App. & Equip.	0.35	187.5	185.2	178.2	174.0	165.9	1.2	5.2	7.7	13.0
6.2 Out-patient Services	0.66	149.8	149.8	149.8	149.8	148.0	0.0	0.0	0.0	1.2
6.3 Hospital Services	1.71	140.7	140.7	140.7	140.7	135.3	0.0	0.0	0.0	4.0
7 Transport	18.98	171.4	171.2	170.7	170.1	159.9	0.1	0.4	0.7	7.1
7.1 Purchase of Vehicles	5.89	152.3	152.2	151.2	151.4	150.9	0.0	0.7	0.6	0.9
7.2 Operation of Personal Transport	10.92	180.6	180.4	180.0	179.0	164.6	0.2	0.4	0.9	9.8
7.3 Transport Services	2.17	176.5	176.5	176.5	176.5	161.1	0.0	0.0	0.0	9.5
8 Communication	3.01	91.7	91.7	91.7	91.7	91.7	0.0	0.0	0.0	0.0
8.1 Postal Services	0.04	209.9	209.9	209.9	209.9	209.9	0.0	0.0	0.0	0.0
8.2 Telephone & Telefax Equipment	0.74	66.6	66.6	66.6	66.6	66.6	0.0	0.0	0.0	0.0
8.3 Telephone & Telefax Services	2.23	98.0	98.0	98.0	98.0	98.0	0.0	0.0	0.0	0.0
9 Recreation & Culture	2.22	136.5	136.3	136.0	132.8	131.8	0.1	0.4	2.8	3.6
9.1 Audio Visual, Photographic & Info. Proce. Equip.	1.09	106.2	106.2	105.9	105.7	104.7	0.0	0.4	0.6	1.4
9.2 Other Recreational Items & Equip.	0.18	164.6	162.6	160.6	159.4	156.5	1.3	2.5	3.3	5.2
9.3 Recreational & Cultural Services	0.76	156.0	156.0	156.0	149.2	148.9	0.0	0.0	4.6	4.8
9.4 Newspapers, Books & Stationary	0.19	203.3	203.2	202.6	195.4	192.9	0.1	0.3	4.0	5.4
10 Education	3.37	148.4	148.4	148.4	148.4	141.7	0.0	0.0	0.0	4.7
10.1 Pre-Primary & Primary Education	1.10	185.1	185.1	185.1	185.1	173.5	0.0	0.0	0.0	6.7
10.2 Secondary & Tertiary Education	2.26	130.5	130.5	130.5	130.5	126.2	0.0	0.0	0.0	3.4
11 Restaurants & Hotels	3.27	213.0	210.8	210.1	204.9	196.1	1.0	1.4	3.9	8.6
11.1 Restaurants, Cafes and the Like	3.08	216.1	213.8	213.1	207.7	198.5	1.1	1.4	4.1	8.9
11.2 Accommodation Services	0.19	161.7	161.6	161.0	160.1	156.4	0.1	0.5	1.0	3.4
12 Miscellaneous Goods & Services	9.57	129.7	129.6	129.3	129.2	128.2	0.0	0.2	0.3	1.2
12.1 Personal Care	0.66	156.7	156.6	156.1	154.2	152.3	0.1	0.4	1.6	2.9
12.2 Personal Effects N.E.C.	0.04	134.9	134.7	134.3	132.2	131.2	0.2	0.5	2.1	2.8
12.3 Social Protection	0.14	160.5	160.5	160.5	160.5	147.8	0.0	0.0	0.0	8.6
12.4 Insurance	6.32	128.6	128.6	128.1	128.7	128.9	0.0	0.3	(0.1)	(0.2)
12.5 Financial Services	0.18	146.0	145.8	148.7	146.7	142.4	0.2	(1.8)	(0.5)	2.6
12.6 Taxes Licences, Fees	2.24	121.4	121.4	121.2	119.9	116.6	0.0	0.2	1.3	4.1
All-Items Index	100.0	169.8	169.4	168.7	166.2	160.8	0.2	0.6	2.1	5.6

TABLE 3: COST-OF-LIVING INDEX BY TRADABILITY (September 2006 = 100.0)

		All Items		Non-Tradable		Domestic Tradable		Imported Tradable		All Tradable	
		Index	Inflation	Index	Inflation	Index	Inflation	Index	Inflation	Index	Inflation
Weights		100		30.92		23.91		45.17		69.08	
2011	Jan	141.8	7.9	132.8	7.3	158.2	5.9	139.2	9.5	145.6	8.2
	Feb	142.9	8.5	132.9	7.2	158.9	6.2	141.3	10.9	147.2	9.1
	Mar	143.8	8.5	133.7	7.3	160.1	6.4	142.2	10.5	148.2	9.0
	Apr	146.0	8.2	135.2	6.5	162.2	5.5	144.8	10.9	150.6	8.9
	May	147.6	8.3	135.3	5.2	163.5	5.5	147.6	12.1	152.9	9.6
	Jun	149.0	7.9	138.0	6.4	164.8	6.5	148.1	9.6	153.6	8.5
	Jul	149.3	7.8	138.0	6.3	165.4	6.5	148.6	9.5	154.2	8.4
	Aug	150.8	8.7	139.0	7.0	165.7	6.7	150.9	11.1	155.8	9.5
	Sept	151.4	8.6	139.9	6.9	166.3	6.9	151.3	10.6	156.3	9.2
	Oct	152.0	8.8	140.3	7.1	167.0	7.4	152.1	10.8	157.0	9.5
	Nov	153.0	9.2	140.4	7.0	167.5	7.4	153.9	11.6	158.4	10.0
	Dec	153.5	9.2	140.7	6.9	168.0	7.4	154.6	11.8	159.1	10.1
2012	Jan	154.3	8.8	141.1	6.2	169.6	7.2	155.3	11.5	160.0	9.9
	Feb	154.7	8.2	141.0	6.1	170.4	7.3	155.7	10.2	160.6	9.1
	Mar	155.4	8.0	141.4	5.8	172.2	7.6	156.1	9.8	161.4	8.9
	Apr	156.9	7.5	142.4	5.3	176.0	8.5	156.7	8.2	163.2	8.3
	May	159.0	7.7	144.2	6.5	178.0	8.9	158.9	7.7	165.3	8.1
	Jun	159.8	7.3	145.0	5.1	178.7	8.4	159.7	7.8	166.0	8.1
	Jul	160.3	7.3	145.2	5.2	179.0	8.2	160.5	8.0	166.7	8.1
	Aug	160.8	6.6	145.7	4.8	179.3	8.2	161.1	6.7	167.2	7.3
	Sept	162.1	7.1	146.1	4.4	179.9	8.2	163.4	8.0	168.9	8.1
	Oct	162.8	7.1	146.3	4.3	181.6	8.7	164.0	7.8	169.9	8.2
	Nov	164.4	7.4	146.7	4.5	183.7	9.7	165.9	7.8	172.0	8.5
	Dec	164.9	7.4	147.3	4.7	184.5	9.8	166.3	7.5	172.5	8.4
2013	Jan	165.9	7.5	148.4	5.2	185.6	9.5	167.1	7.6	173.4	8.3
	Feb	166.2	7.5	148.5	5.3	186.0	9.2	167.5	7.6	173.8	8.2
	Mar	167.1	7.6	148.8	5.3	188.4	9.4	168.1	7.7	175.0	8.4
	Apr	168.2	7.2	150.1	5.4	190.9	8.4	168.4	7.5	176.0	7.9
	May	168.7	6.1	150.4	4.3	191.4	7.5	168.9	6.3	176.5	6.8
	Jun	169.1	5.8	151.1	4.2	191.1	6.9	169.5	6.2	176.8	6.5
	Jul	169.4	5.7	151.2	4.1	191.1	6.8	170.1	6.0	177.2	6.3
	Aug	169.8	5.6	151.4	4.0	191.4	6.8	170.5	5.8	177.6	6.2
% Change on last month		0.2		0.2		0.2		0.3		0.2	

TABLE 4: CORE INFLATION RATES BY EXCLUSION AND TRIMMED MEAN

Year	Month	Consumer Price Index (Trimmed Mean) (September 2006 = 100)	Core Monthly Inflation Rate (Trimmed Mean) (percentage)	Consumer Price Index (Excluding Administered Prices) (September 2006 = 100)	Core Monthly Inflation (Excluding Administered Prices) (percentage)
2011	Jan	139.6	8.0	145.5	7.6
	Feb	142.1	8.6	146.0	7.7
	Mar	142.6	8.4	147.1	7.6
	Apr	143.4	8.0	149.4	7.4
	May	148.7	8.2	150.5	7.3
	Jun	148.8	7.6	151.4	7.4
	July	150.3	7.4	151.9	7.3
	Aug	153.7	8.4	152.5	7.4
	Sept	154.8	8.1	153.2	7.4
	Oct	155.6	8.3	154.0	7.6
	Nov	156.3	8.5	154.4	7.5
	Dec	156.9	8.5	155.1	7.5
2012	Jan	157.9	8.1	156.0	7.2
	Feb	158.0	7.8	156.5	7.2
	Mar	159.2	7.6	157.4	7.0
	Apr	158.9	7.3	159.2	6.6
	May	160.7	7.3	160.2	6.5
	Jun	163.9	6.8	161.2	6.4
	Jul	164.5	6.8	161.8	6.5
	Aug	164.0	6.3	162.5	6.6
	Sept	165.6	6.5	163.2	6.5
	Oct	163.7	6.7	164.1	6.6
	Nov	165.0	7.1	165.1	6.9
	Dec	165.7	7.1	165.7	6.8
2013	Jan	166.8	7.2	166.8	6.9
	Feb	167.2	7.2	167.2	6.9
	Mar	168.3	7.3	168.4	7.0
	Apr	172.2	6.8	169.4	6.4
	May	166.9	6.0	170.0	6.1
	Jun	168.4	5.7	170.3	5.7
	Jul	168.7	5.5	170.7	5.5
	Aug	169.1	5.4	171.1	5.3

TABLE 5: AVERAGE ANNUAL INFLATION (SEPTEMBER 2006 = 100.0)

Group	Weights	YEAR				
		2008	2009	2010	2011	2012
1 Food & Non-Alcoholic Beverages	21.84	20.2	14.7	3.6	6.9	8.0
2 Alcoholic Beverages, Tobacco & Narcotics	9.29	13.2	35.2	7.1	8.4	7.6
3 Clothing and Footwear	7.52	2.0	8.4	8.0	8.9	7.5
4 Housing, Water, Electr. Gas & Other Fuels	11.46	8.1	4.8	6.4	8.4	7.7
5 Furnishing, H/H Equipment & Routine Maintenance	6.76	6.0	11.9	9.4	9.0	7.3
6 Health	2.71	11.3	5.5	2.7	4.5	5.9
7 Transport	18.98	21.2	(8.4)	12.1	13.2	10.8
8 Communication	3.01	(0.3)	(0.3)	1.2	(3.0)	(1.4)
9 Recreation & Culture	2.22	2.3	5.0	6.0	8.3	5.8
10 Education	3.37	3.9	3.9	5.8	10.6	6.4
11 Restaurants & Hotels	3.27	12.7	18.8	9.0	9.3	8.4
12 Miscellaneous Goods & Services	9.57	4.9	3.8	7.0	5.3	2.0
All Items Index	100.0	12.6	8.2	6.9	8.5	7.5

PRICES COLLECTION COVERAGE FOR BOTSWANA CONSUMER PRICE INDEX (CPI)- 2013



Glossary

Consumer Price Index (CPI) is an index which measures price changes in goods and services with reference to a base period.

Inflation is a measurement of prices movement of goods and services in a particular country.

Domestic Tradable refers to the goods and services which a country (Botswana) can export to other countries.

Imported Tradable represents the goods and services which a country (Botswana) imports from other countries (trading partners).

Non-Tradable refers to the goods and services which a country cannot either export or import to other countries.

All –Tradable refers to the total of Domestic and Imported tradable.

Trimmed Mean Core Inflation- attempts to remove 8 percent (by weight) of the commodity sub-groups with the largest price changes at each of the ends of an ordered series of price changes in any given month.

Core inflation by Exclusion is a measure used to remove the volatility inherent in prices that are only adjusted periodically and not always in response to currently prevailing market forces.