



INTERNATIONAL MERCHANDISE TRADE STATISTICS

Monthly Digest- April 2024

Contact Statistician: Mogotsi J. Morewanare
Email: mmorewanare@statsbots.org.bw



STATISTICS BOTSWANA

Published by

STATISTICS BOTSWANA

GABORONE (HEAD OFFICE)

Private Bag 0024
Gaborone
Tel: 3671300 Fax: 3952201
Toll Free: 0800 600 200

MAUN OFFICE

Private Bag 47
Maun
Tel: 371 5716
Fax: 686 4327

FRANCISTOWN OFFICE

Private Bag F193,
City of Francistown
Tel: 241 5848,
Fax: 241 7540

E-mail: info@statsbots.org.bw

Website: <http://www.statsbots.org.bw>

JUNE 2024

Copyright © Statistics Botswana 2024





INTERNATIONAL MERCHANDISE TRADE STATISTICS

Monthly Digest- April 2024

TABLE OF CONTENTS

List of Acronyms.....	2
Preface.....	ii
Executive Summary.....	1
1.0 Total Trade.....	2
1.1 Data Revision.....	2
1.2 Imports.....	2
1.3 Total Exports.....	2
1.4 Trade Balance.....	2
2.0 Trade by Principal Commodity Groups.....	3
2.1 Principal Imports.....	3
2.2 Principal Exports.....	4
3.0 Direction of Trade.....	5
4.0 Imports and Exports by Top imported and Exported Commodities.....	7
5.0 Trade by Mode of Transport.....	7
6.0 Transit Trade.....	8
7.0 Annexure.....	11
8.0 Concepts, Sources and Methods.....	23
8.1 Time of Recording of Trade.....	23
8.2 Concepts and Definitions.....	23
8.3 Exclusions from IMTS.....	24

LIST OF TABLES

Table A: Data Revision: January, February & March 2024 (Million Pula).....	2
Table B: Trade by Mode of Transport – April 2024 (Million Pula).....	8
Table C1: Transit Trade by Border Post – April 2024 (Million Pula).....	9
Table C2: Transit by Chapter – April 2024 (Million Pula).....	10
Table 1.0: Total Merchandise Trade – January 2022 to April 2024 (Million Pula).....	11
Table 2.1: Principal Imports Commodity Groups – January 2022 to April 2024 (Million Pula).....	12
Table 2.2: Principal Export Commodity Groups – January 2022 to April 2024 (Million Pula).....	13
Table 2.3: Diamonds Trade – January 2022 to April 2024 (Million Pula).....	14
Table 3.1A: Total Imports by Country, Region and Principal Import Commodity Groups - April 2024 (Million Pula).....	15
Table 3.1B: Principal Imports Commodity Groups as a Percentage of Total Imports at Country and Regional Level – April 2024.....	16
Table 3.2A: Total Exports by Country, Region and Principal Export Commodity Groups – April 2024 (Million Pula).....	17
Table 3.2 B: Principal Exports Commodity Groups as a Percentage of Total Exports at Country and Regional Level – April 2024.....	18
Table 4.1 A: Top Imported Goods (Excluding Diamonds) – April 2024 (Million Pula).....	19
Table 4.1A: Top Imported Goods (Excluding Diamonds) – April 2024 (Million Pula) Continued..	20
Table 4.1 B: Top Exported Goods (Excluding Diamonds) – April 2024 (Million Pula).....	21
Table 4.1 B: Top Exported Goods (Excluding Diamonds) – April 2024 (Million Pula) Continued..	22

TABLE OF CONTENTS

LIST OF CHARTS

Chart 1.0: Total International Merchandise Trade – January 2022 to April 2024 (Million Pula).....	3
Chart 2.1: Composition of Principal Imports- April 2024.....	4
Chart 2.2: Composition of Principal Exports – April 2024.....	4
Chart 3.1: Imports by Major Trading Partner Countries & Regions – April 2024.....	6
Chart 3.2: Exports by Major Trading Partner Countries & Regions – April 2024.....	7
Chart B: Trade by Mode of Transport – April 2024 (Percentage).....	8
Chart C1: Transit Trade by Border Post – April 2024 (Percentage).....	9
Chart C2: Transit Trade by Chapter – April 2024 (Percentage).....	10

List of Acronyms

CIF	: Cost, Insurance and Freight
EU	: European Union
FOB	: Free On Board
IMTS	: International Merchandise Trade Statistics
NES	: Not Elsewhere Specified
SACU	: Southern Africa Customs Union
SADC	: Southern Africa Development Community
UAE	: United Arab Emirates
USA	: United States of America
UK	: United Kingdom

Preface

International Merchandise Trade Statistics measure the flows of goods across national borders and can be used to spot emerging markets, gauge competition, and identify export and import opportunities. As a result, it is integral to the process of globalization by keeping track of all exchanges of goods between trading partners. The transaction reflects the value and quantity of goods that add to (Imports) or subtract from (Exports), the stock of material resources of a country. Trade statistics continue to be one of the key indicators of economic performance and global competitiveness.

The monthly International Merchandise Trade Statistics are used extensively in the compilation of national accounts and balance of payments. Furthermore, these statistics are used by government institutions and other stakeholders for trade negotiations and other various purposes.

This publication outlines Botswana's monthly International Merchandise Trade Statistics (IMTS) for April 2024. The report provides summaries of international trade in goods, as shown in **Table 1.0**. **Tables 2.1** and **2.2** show trade by Principal commodity groupings for imports and exports, respectively, whereas **Table 2.3** solely shows trade in diamonds. The direction of trade appears in **Table 3.1A** (imports) and **Table 3.2A** (total exports). Major trading partner countries by commodity groups, as a percentage of trade at region or country level, for April 2024 are presented in **Table 3.1B** for imports and **Table 3.2B** for exports. The top traded import and export commodities excluding diamonds for April 2024 are presented in **Tables 4.1A** & **4.2A** respectively. This is to guide users on opportunities to produce commodities for import substitution or possible exportation.

Changes in data for the corresponding months in the current versus previous digests may be attributed to data from transactions that had deferred customs duty assessments. The data for such transactions would only be available at a later stage after customs duty assessments have been completed.

International trade statistics by mode of transport are collected for the active modes of transport (road, rail, air) through which goods are presumed to leave or enter the statistical territory of the country. Such data may be used to formulate transport policy, monitor international transport routes or assess the impact of international trade on the environment.

This publication also reflects on the value of Goods on Transit. Transit trade is vital in facilitating economic transformation and regional trade, while contributing to the growth of employment, incomes, tax revenues, and directly to improving the balance of payments through export of services.

For more information, contact the Directorate of Stakeholder Relations at 3671300. All Statistics Botswana publications are available on the website at www.statsbots.org.bw and at the Statistics Botswana Information Resource Centre (Head Office, Gaborone).

I sincerely thank all stakeholders involved in the formulation of this monthly digest, for their continued support and feedback, as we strive to serve users of our products and services.



Dr Lucky Mokgathe
Acting Statistician General
June 2024

Executive Summary

This International Merchandise Trade Statistics (IMTS) monthly digest provides a summary of trade statistics on Botswana's total imports and exports of goods for April 2024. International merchandise trade statistics records all goods which add to, or subtract from, the stock of material resources of a country by entering (as imports) or leaving (as exports) its economic territory.

In April 2024, Imports stood at P7, 849.4 million, registering an increase of 9.9 percent from the revised March 2024 value of P 7, 143.3 million. The top imported commodity groups were Machinery & Electrical Equipment at 17.7 percent, followed by Fuel, Diamonds and Food, Beverages & Tobacco at 17.3 percent, 16.3 percent and 14.8 percent, respectively.

The Southern African Customs Union (**SACU**) was the main source of imports at 71.8 percent. Asia and the European Union (**EU**) accounted for 12.9 percent and 4.0 percent of total imports, respectively. South Africa and Namibia supplied imports accounting for 57.3 percent and 14.2 percent respectively. China, India and Canada followed with 5.2 percent, 4.9 percent and 3.3 percent respectively (**Table 3.1A**).

In April 2024, Botswana's overall exports decreased by 18.5 percent from the revised March 2024 value of P6, 779.6 million to P5, 527.5 million. Diamonds and Copper led the total exports with contributions of 75.2 percent and 11.8 percent respectively.

During the period under review, Botswana's exports were mostly absorbed by Asia with a market share of 62.5 percent. **SACU** and the **EU** received 13.5 percent and 13.1 percent of total exports, respectively. Botswana's top export destinations were the United Arab Emirates (**UAE**), India and Belgium having received 24.9 percent, 22.3 percent and 13.0 percent of total exports respectively. South Africa received 9.8 percent of total exports during the period under review (**Table 3.2A**).

Goods exported by Air accounted for 76.4 percent of total exports, while those transported by Road and Rail represented 23.3 percent and 0.3 percent respectively. Imports representing 67.7 percent were transported into the country by Road whereas those imported by Air and Rail accounted for 17.4 percent and 14.9 percent of total imports respectively (**Table B**).

During April 2024, merchandise worth P17, 583.1 million transited through the country to various destinations. Goods accounting for 55.3 percent transited through Kazungula Bridge border post. Martins Drift and Pioneer border posts followed with 22.8 percent and 8.7 percent respectively, (**Table C1**). The top transiting goods were chapter 74 (Copper and articles thereof) at 36.5 percent, Chapter 28 (Inorganic chemicals; organic and inorganic compounds of precious metals; of rare earth metals, of radio-active elements and of isotopes) at 18.3 percent and chapter 99 (Commodities not specified according to kind) at 15.6 percent of all goods on transit (**Table C2**).

1.0 Total Trade

Total merchandise trade refers to imports, domestic exports, re-exports and trade balance between countries or regions over a specific period. The discussions are based on April 2024, which is also referred to as the reference period, the period under review or the current month, throughout the digest.

1.1 Data Revision

The current monthly digest is based on preliminary figures with regard to the reference period. Revisions in the monthly trade statistics data are always necessary because they allow for the incorporation of the additional and improved data that were not available at the previous release date, or when there are late customs duty assessments. Revisions are made on a monthly basis when monthly data files are uploaded into the database, thereby bringing additional information for previous months. In some instances, revisions are negligible, while notably significant in others.

The inclusion of additional data in April 2024 resulted in the upward revision to both trade flows for January, February and March 2024. Imports for March 2024 significantly increased by 2.2 percent (P152.3 million) while January and February experienced insignificant growth. Total exports for January, February and March 2024 rose by 19.3 percent (P947.0 million), 32.2 percent (P1, 116.8 million) and 50.0 percent (P2, 261.1 million) respectively. Table A shows revised data comparing figures in the March 2024 digest and the current.

Table A: Data Revision: February 2024 (Million Pula)

Period	As at February 2024 Digest (P Million)			As at March 2024 Digest (P Million)			Difference (P million)			Difference as %		
	Imports (CIF)	Total Exports	Trade Balance	Imports (CIF)	Total Exports	Trade Balance	Imports (CIF)	Total Exports	Trade Balance	Imports (CIF)	Total Exports	Trade Balance
Jan_2024	7,733.7	4,913.8	(2,819.9)	7,740.1	5,860.9	(1,879.3)	6.4	947.0	940.6	0.1	19.3	(33.4)
Feb	7,420.0	3,470.8	(3,949.2)	7,448.4	4,587.6	(2,860.8)	28.4	1,116.8	1,088.4	0.4	32.2	(27.6)
Mar	6,991.0	4,518.5	(2,472.5)	7,143.3	6,779.6	(363.7)	152.3	2,261.1	2,108.8	2.2	50.0	(85.3)

() denotes negative

1.2 Imports

Imports are valued at Cost, Insurance & Freight (CIF), the price includes the value of goods, insurance and freight costs required for delivering the commodities to the destination, but excludes customs or any other duties paid on arrival at the border of the importing country.

Botswana received imports amounting to P7, 849.4 million during April 2024, registering an increase of 9.9 percent (P706.1 million) from the revised March 2024 figure of P7, 143.3 million. The increase is attributable to all principal commodity groups except Furniture and Wood & Paper products. The most significant contribution was found in the importation of Machinery & Electrical Equipment by 32.9 percent (P343.4 million), from P1, 042.4 million in March 2024 to P1, 385.8 million recorded in April 2024. Vehicles & Transport equipment recorded an increase of 17.4 percent (P88.4 million), from P508.7 million in March 2024 to P597.2 million in April 2024 (**Table 2.1**).

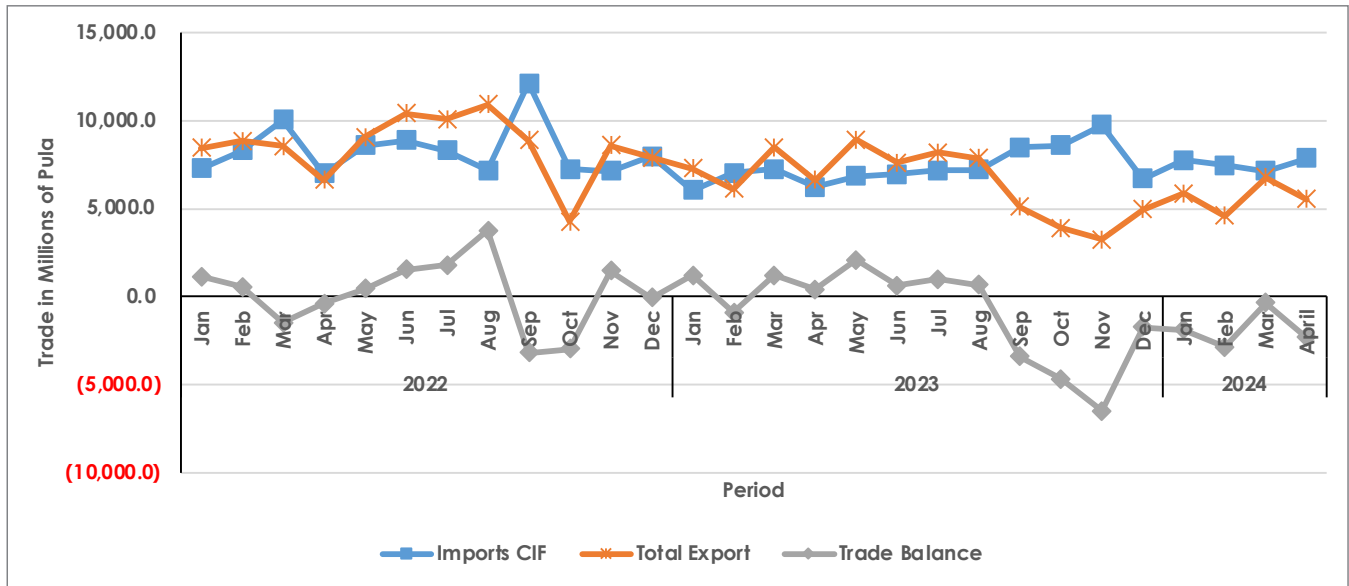
1.3 Total Exports

Botswana's export earnings went down by 18.5 percent (P1, 252.1 million) from the revised value of P6, 779.6 million recorded in March 2024 to P5, 527.5 million during the period under review. Diamonds exports dropped by 20.9 percent (P1, 097.6million), playing a pivotal role in the overall decrease of total exports as shown in **Table 2.2**.

1.4 Trade Balance

Botswana's trade has persistently recorded trade deficit since September 2023. In April 2024, the country recorded a deficit of P2, 321.9 million (Table 1.0). **Chart 1.0** displays the graphical presentation of the trade balance from January 2022 to April 2024.

Chart 1.0: Total International Merchandise Trade – January 2022 to April 2024 (Million Pula)



2.0 Trade by Principal Commodity Groups

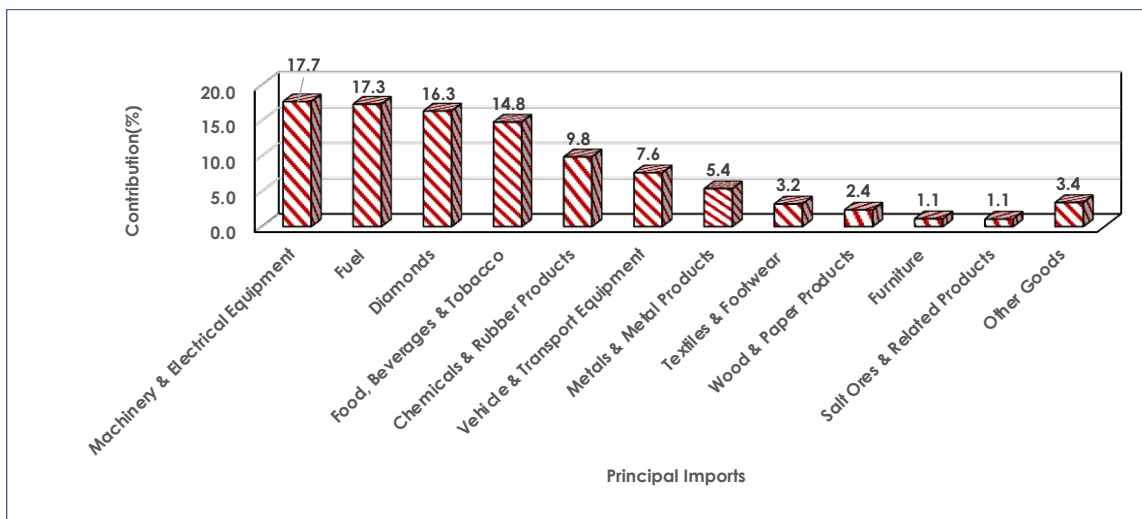
Principal commodity groups refer to selections of related commodities grouped together to form major groups. Commodities forming a group may be of related chapters or commodities, for example ‘Vehicles & Transport Equipment’ combines vehicles and other equipment used for transport purposes.

In cases where it becomes a challenge to come up with further groups of related chapters or commodities, the remaining commodities are grouped together under the general category called ‘Other’. This occurs when a commodity group’s contribution to the total is minimal.

2.1 Principal Imports

Botswana received imports valued at P7, 849.4 million in April 2024. The top imported groups were Machinery & Electrical Equipment; Fuel; Diamonds and Food, Beverages & Tobacco. Machinery & Electrical Equipment contributed 17.7 percent (P1, 385.8 million) followed by Fuel and Diamonds at 17.3 percent (P1, 358.1 million) and 16.3 percent (P1, 281.5 million) to total imports respectively. Food, Beverages & Tobacco were also among Botswana’s leading imported groups, having contributed 14.8 percent (P1, 158.7 million). Contributions made by other commodity groups can be viewed in [Table 2.1](#) and [Chart 2.1](#).

Chart 2.1: Composition of Principal Imports – April 2024 (Percentage)

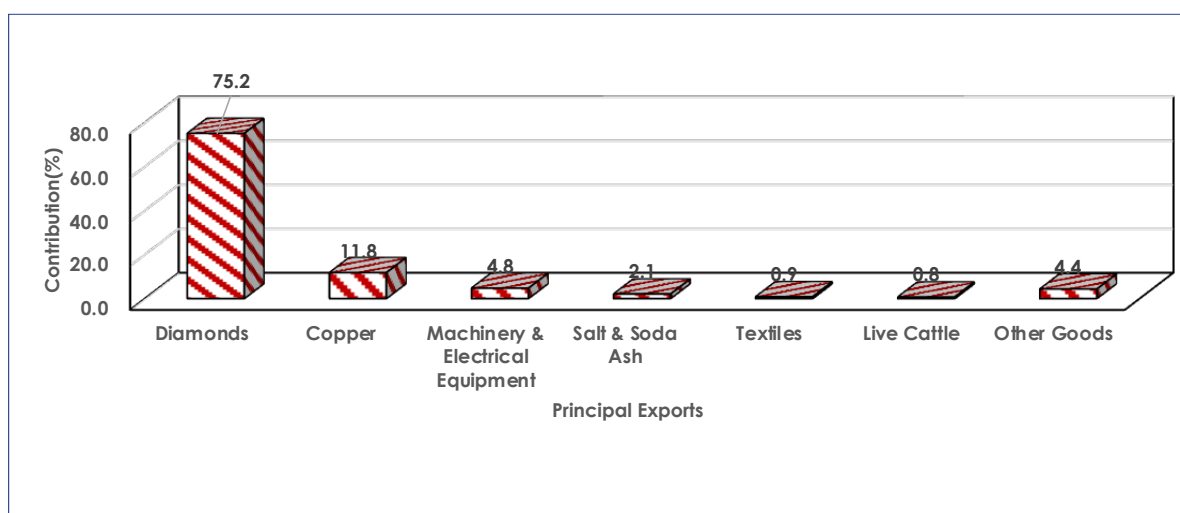


Note: 'Other Goods' here includes any other goods not displayed as in Table 2.1

2.2 Principal Exports

Botswana exported merchandise amounting to P5, 527.5 million in April 2024. Diamonds was the leading export commodity group with a contribution of 75.2 percent (P4, 155.5 million), followed by Copper with contributions of 11.8 percent (P654.3 million). Contributions made by other commodity groups are presented in **Table 2.2** and **Chart 2.2**.

Chart 2.2 Composition of Principal Exports – April 2024 (Percentage)



Note: 'Other Goods' here includes any other goods not displayed as in Table 2.2

3.0 Direction of Trade

The direction of Trade analyses the value of merchandise trade disaggregated according to a country's primary trading partners. As a result the direction of trade outlines the last known destination for exports and sources of imports. Only major trading partners are considered individually, while smaller trading partners are grouped together under a general category. Trade by major partner countries, regions and principal commodity groups for imports and exports, during April 2024 appears in **Table 3.1 A** and **Table 3.2A**, respectively. **Table 3.1B** (imports) and **Table 3.2B** (exports) show percentage distributions for major sources and destinations by principal commodity groups during the same month.

3.1 Imports by Major Trading Partner Countries and Regions

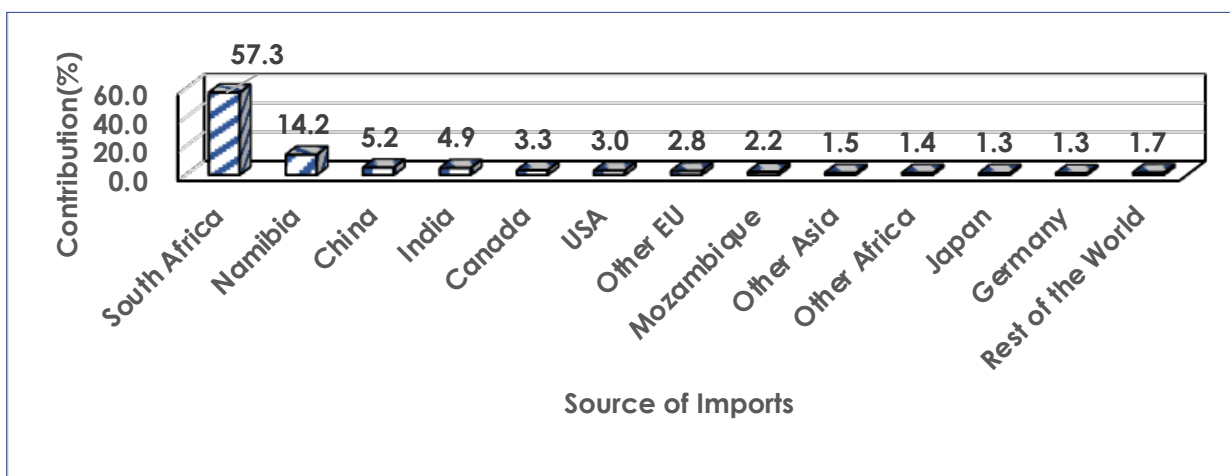
Botswana imported goods worth P7, 849.4 million, with the SACU region contributing largest at 71.8 percent (P5, 636.1 million) to the total imports during the period under review. Fuel and Food, Beverages & Tobacco were the most imported commodity groups from the customs union accounting for 20.7 percent (P1, 166.8 million) and 19.4 percent (P1, 093.5 million), respectively. Diamonds and Machinery & Electrical Equipment made contributions of 13.0 percent (P731.7 million) and 11.0 percent (P618.4 million) to total imports from the union respectively. Among the **SACU** member states, South Africa was the largest source at 57.3 percent (P4, 493.9 million) of total imports. Namibia followed with 14.2 percent (P1, 112.7 million) of total imports. These are displayed in **Table 3.1A** and **Table 3.1B**.

During the period of assessment, Botswana imported goods totalling P1, 011.2 million from Asia, which reflected 12.9 percent of the total imports. The main commodity groups imported were Machinery & Electrical Equipment and Diamonds with contributions of 34.8 percent (P351.6 million) and 27.7 percent (P279.6 million) of total imports, respectively. In Asia, the countries that contributed highest were China and India, at 5.2 percent (P405.1 million) and 4.9 percent (P384.1 million) to total imports respectively. Figures are shown in **Table 3.1A** and **Table 3.1B**.

Botswana received imports from the EU valued at P315.2 million, contributing 4.0 percent of the total imports. Machinery & Electrical Equipment and Chemicals & Rubber Products were the key commodity groups imported from the Union at 48.4 percent (P152.4 million) and 21.2 percent (P66.9 million) respectively. Germany made the highest contribution of 1.3 percent (P98.9 million) to the total imports (**Table 3.1A** and **Table 3.1B**).

Imports accounting for 3.3 percent (P261.0 million) of total imports were sourced from Canada during the month under review. The main import commodity group was Diamonds at 99.1 percent (P258.6 million) of total imports from that country. The USA supplied imports worth P238.9 million, accounting for 3.0 percent of Botswana's total imports. Machinery & Electrical Equipment and Food, Beverages & Tobacco being the main commodities supplied at 72.7 percent (P173.7 million) and 10.3 percent (P24.6 million) respectively. Sources of imports during April 2024 can be viewed in **Table 3.1 A** and **Chart 3.1**.

Chart 3.1: Imports by Major Trading Partner Countries & Regions – April 2024



'Rest of the World' includes all other Countries or Regions not specified as in Table 3.1A

3.2 Exports by Major Trading Partner Countries and Regions

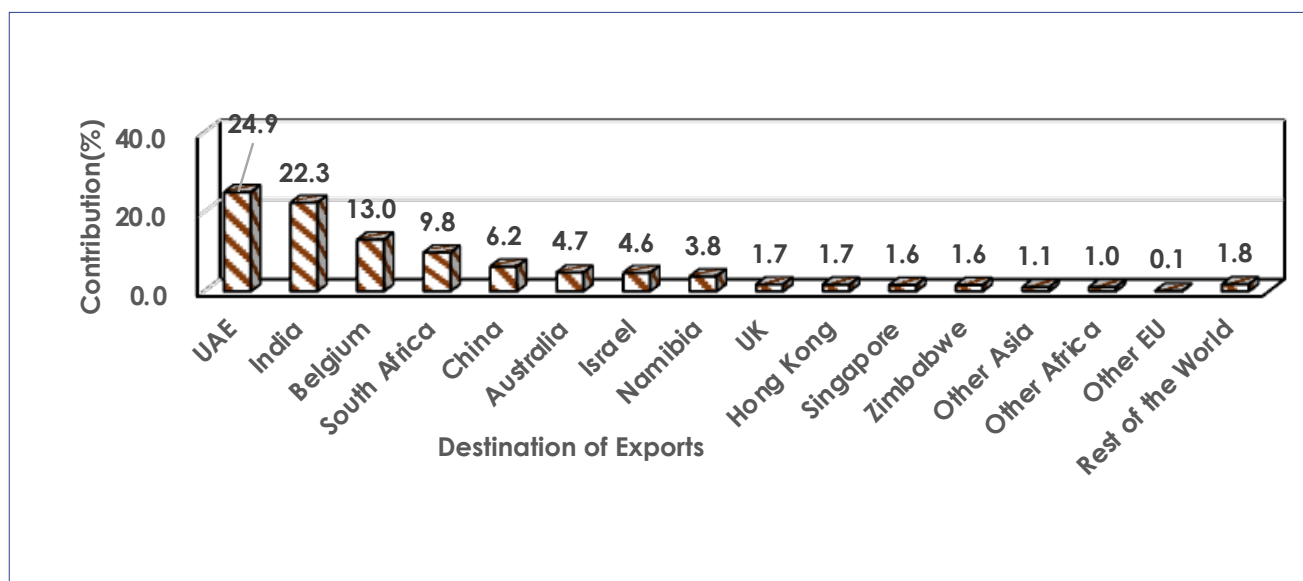
During the period under review, Botswana exported goods valued at P5, 527.5 million. Exports to Asia were the highest at 62.5 percent (P3, 454.2 million), rendering the block the main destination market for Botswana. Top exports destinations within Asia were the UAE and India at 24.9 percent (P1, 377.6 million) and 22.3 percent (P1, 233.3 million) of total exports, respectively. Diamonds and Copper were the major commodity groups exported to Asia, at 89.9 percent (P3, 103.8 million) and 10.0 percent (P343.8 million) respectively as shown in **Table 3.2A** and **Table 3.2B**.

Exports destined to the SACU region accounted for 13.5 percent (P748.7 million) of total exports during the month under review. Machinery & Electrical Equipment, Diamonds and Salt & Soda Ash were the major commodity groups exported to the customs union. These accounted for 30.9 percent (P231.3 million), 25.5 percent (P190.8 million) and 12.9 percent (P96.6 million) of total exports to the regional block respectively. South Africa was the main recipient of exports to **SACU**, at 9.8 percent (P539.4 million) of total exports, as in **Table 3.2A**.

The **EU** received exports amounting to P725.4 million, reflecting 13.1 percent of total exports in April 2024. Belgium received most of exports destined for the union, at 13.0 percent (P717.4 million) of total exports. Diamonds was the main commodity group exported to the **EU** at 98.9 percent (P717.2 million), as displayed in **Table 3.2A** and **Table 3.2B**.

During April 2024, Australia received exports worth P261.1 million, representing 4.7 percent of Botswana's total exports. Copper was the main commodity group exported to Australia with contribution of 99.3 percent (P259.3 million). Contributions made by other commodity groups are presented in **Table 3.2A** and **Table 3.2B**.

Chart 3.2: Exports by Major Trading Partner Countries & Regions – April 2024



Rest of the World' includes all other Countries or Regions not specified as in Table 3.2

4.0 Imports and Exports by Top imported and Exported Commodities

The top traded commodities for both flows are presented in **Table 4.1A** for imports and Table 4.1B for exports for April 2024. This is intended to present the most traded goods (excluding Diamonds) with a view to guiding users on opportunities to produce commodities for import substitution, possible exportation and economic diversification.

5.0 Imports and Exports by Mode of Transport

Trade by mode of transport refers to categorising trade activities based on the method of transportation used to move goods between countries or regions. This classification helps in understanding the flow of goods across borders and can provide insights into trade patterns, identifying bottlenecks and infrastructure needs and can be used as guidance in formulating transport policies. Active modes of transport mainly used in Botswana for movement of international merchandise trade are Air, Road and Rail. **Table B** presents statistics relating to modes of transport while **Chart B** gives the graphical illustration.

During the period under review, exports valued at P4, 225.2 million, comprising 76.4 percent of the total exports, were transported by air. Goods exported via road constituted 23.3 percent (P1, 285.2 million) of the total exports, while those transported by rail accounted for 0.3 percent (P17.1 million) of the total export value.

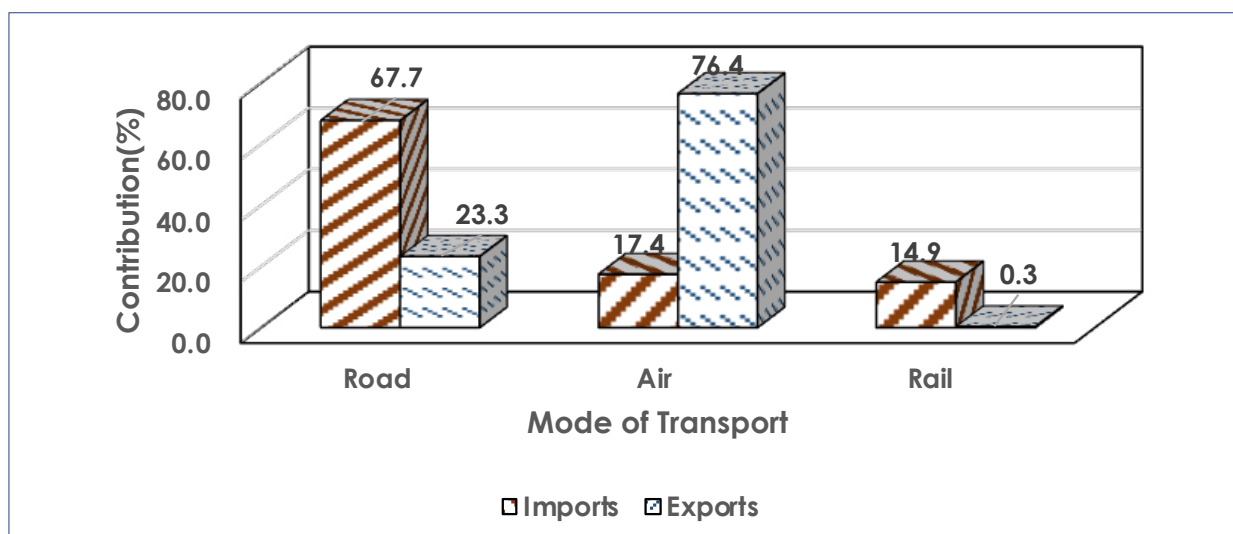
During the current period, imports totalling P5, 310.6 million, equivalent to 67.7 percent of the total imports, were transported by road into the country. Imports transported by air amounted to P1, 367.8 million, representing 17.4 percent of the total imports, while those transported by rail, valued at P1, 169.3 million, constituted 14.9 percent of the total imports.

Table B: Trade by Mode of Transport – April 2024 (Million Pula)

Flow Type	Imports		Total Exports	
Mode of Transport	BW Pula	%	BW Pula	%
Road	5,312.2	67.7	1,285.2	23.3
Air	1,367.8	17.4	4,225.2	76.4
Rail	1,169.3	14.9	17.1	0.3
Total	7,849.4	100.0	5,527.5	100.0

"Other Modes..." includes Inland water ways and Postal service transport

Chart B: Trade by Mode of Transport – April 2024 (Percentage)



6.0 Transit Trade

Transit trade refers to the movement of goods from one country to another through a third country, without the goods being subject to customs duties and other import restrictions in the intermediary country. Essentially, it involves the transportation of goods across a country that lies between the country of origin and the final destination. Countries that serve as transit hubs often provide infrastructure and services to facilitate transit trade. These countries may benefit economically from transit trade through fees, tariffs, or other charges associated with transportation services or by stimulating economic activity related to trade and transportation.

Overall, the purpose of transit trade is to overcome geographical, logistical, and economic constraints to facilitate the movement of goods between countries or regions efficiently, cost-effectively and securely. It plays a crucial role in promoting international trade, economic development, and regional integration.

Countries involved in transit trade typically have agreements and protocols in place to govern the movement of goods through their territory without the imposition of customs duties and other trade barriers. This helps to streamline the transportation of goods and reduce logistical challenges for businesses engaged in international trade.

Transit trade is subject to compliance with specific regulations and documentation requirements to ensure the proper monitoring and control of the movement of goods. Violations or misuse of transit trade arrangements can lead to penalties and legal consequences.

During April 2024, goods amounting to P17, 583.1 million transited through Botswana destined for various countries. Kazungula bridge, Martins Drift and Pioneer Gate were the major border posts through which Goods transited, handled goods accounting for 55.3 percent (P9, 716.2 million), 22.8 percent (P4, 013.2 million) and 8.7 percent (P1, 530.7 million) respectively, as displayed in [Table C1](#) and [Chart C1](#).

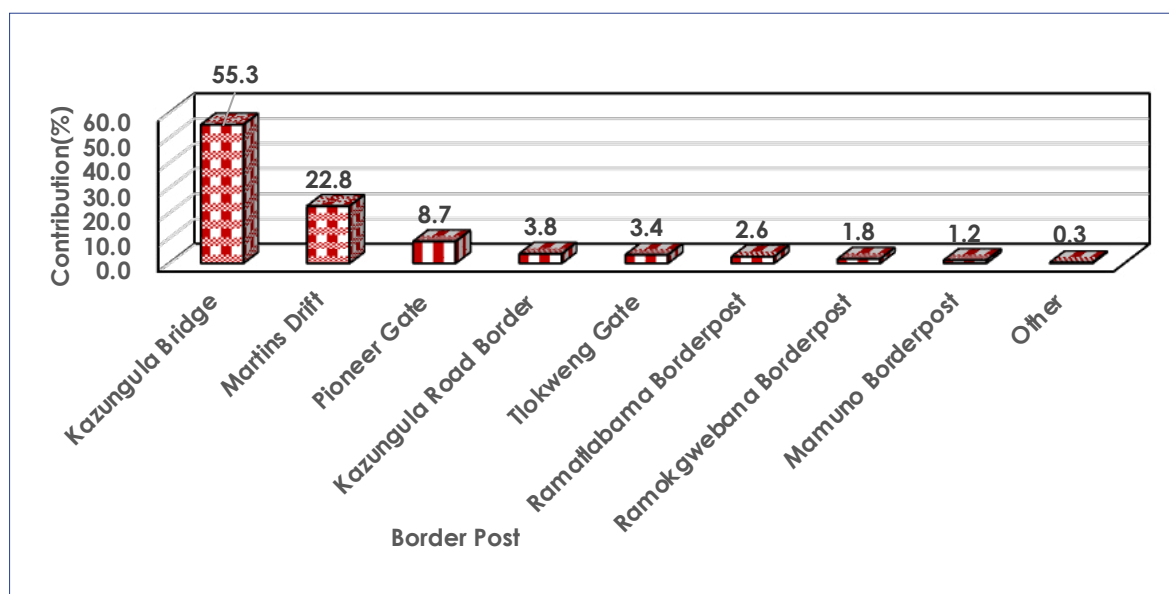
The top most transiting goods were chapters 74 (Copper and articles thereof) at 36.5 percent (P6, 425.5 million) and chapter 28 (Inorganic chemicals; organic and inorganic compounds of precious metals; of rare earth metals, of radio-active elements and of isotopes) at 18.3 percent (P3, 216.0 million). Chapter 99 (Commodities not specified according to kind) followed with a contribution of 15.6 percent (P2, 744.4 million), as shown in **Table C2** and **Chart C2**.

Table C1: Transit Trade by Border Post – April 2024 (Million Pula)

Border Post	BW Pula (Million)	%
Kazungula Bridge	9,716.2	55.3
Martins Drift	4,013.2	22.8
Pioneer Gate	1,530.7	8.7
Kazungula Road Border	670.5	3.8
Tlokweng Gate	598.1	3.4
Ramatlabama Borderpost	465.4	2.6
Ramokgwebana Borderpost	312.2	1.8
Mamuno Borderpost	215.5	1.2
Other	61.4	0.3
Total	17,583.1	100.0

"Other Border Posts..." includes all border posts in Botswana not displayed on Table C1

Chart C1: Transit Trade by Border Post – April 2024 (Percentage)

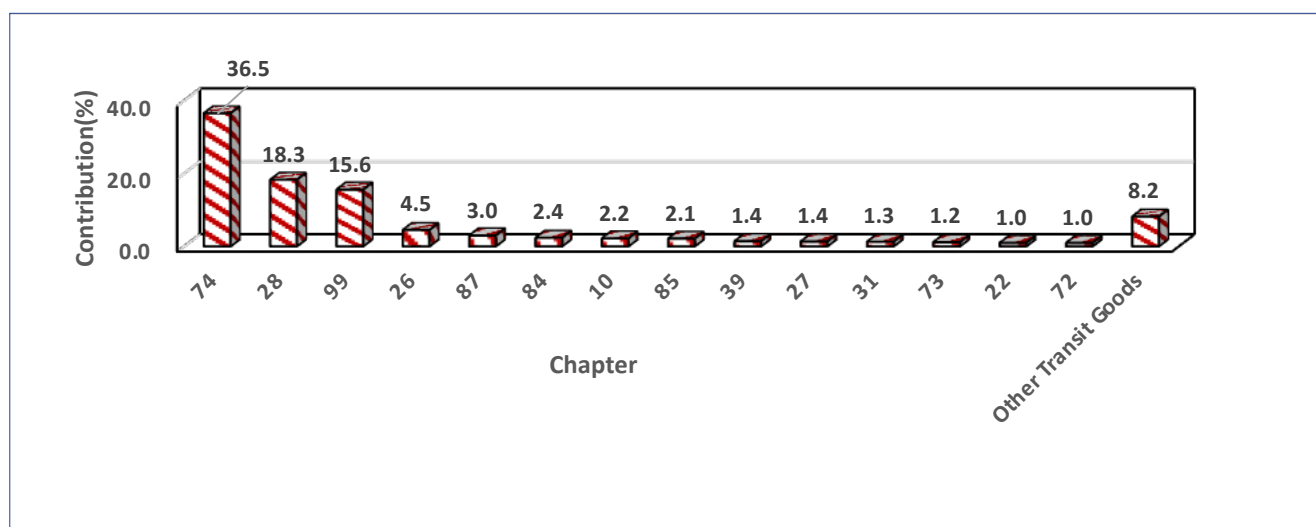


"Other Border Posts..." includes all border posts in Botswana not displayed on Chart C1

Table C2: Transit by Chapter – April 2024 (Million Pula)

Rank	Chapter	Description	BW Pula (Million)	%
1	74	Copper and articles thereof	6,425.5	36.5
2	28	Inorganic chemicals; organic and inorganic compounds of precious metals; of rare earth metals, of radioactive elements and of isotopes	3,216.0	18.3
3	99	Commodities not specified according to kind	2,744.4	15.6
4	26	Ores, slag and ash	795.8	4.5
5	87	Vehicles; other than railway or tramway rolling stock, and parts and accessories thereof	525.1	3.0
6	84	Nuclear reactors, boilers, machinery and mechanical appliances; parts thereof	418.3	2.4
7	10	Cereals	388.3	2.2
8	85	Electrical machinery and equipment and parts thereof; sound recorders and reproducers; television image and sound recorders and reproducers, parts and accessories of such articles	375.4	2.1
9	39	Plastics and articles thereof	246.7	1.4
10	27	Mineral fuels, mineral oils and products of their distillation; bituminous substances; mineral waxes	237.8	1.4
11	31	Fertilizers	226.8	1.3
12	73	Iron or steel articles	204.0	1.2
13	22	Beverages, spirits and vinegar	168.6	1.0
14	72	Iron and steel	168.2	1.0
Other Transit Goods			1,442.2	8.2
Total Transit Goods			17,583.1	100.0

Chart C2: Transit Trade by Chapter – April 2024 (Percentage)



Other..." includes all chapters not displayed on Chart C2

Table 1.0: Total Merchandise Trade – January 2022 to April 2024 (Million Pula)

Period \ Indicators	Imports CIF	Imports FOB	Freight	Insurance	Domestic Exports	Re-Exports	Total Exports	Trade Balance
Jan_2022	7,288.5	6,974.5	312.2	1.9	8,446.3	0.0	8,446.3	1,157.8
Feb	8,277.2	7,936.8	338.2	2.2	8,842.9	0.1	8,843.0	565.8
Mar	10,020.5	9,625.8	392.3	2.4	8,550.0	0.3	8,550.2	(1,470.3)
Q1	25,586.3	24,537.1	1,042.6	6.5	25,839.2	0.3	25,839.6	253.3
Apr	6,979.2	6,672.3	304.9	1.9	6,606.8	0.0	6,606.8	(372.3)
May	8,578.0	8,253.4	322.9	1.7	9,045.2	0.1	9,045.3	467.3
Jun	8,883.1	8,348.6	532.6	1.8	10,403.3	1.6	10,404.9	1,521.9
Q2	24,440.3	23,274.3	1,160.5	5.4	26,055.3	1.7	26,057.1	1,616.8
Jul	8,286.5	7,935.7	349.2	1.6	10,061.1	0.9	10,062.0	1,775.5
Aug	7,167.3	6,825.0	339.7	2.5	10,913.0	1.7	10,914.7	3,747.4
Sep	12,083.0	11,749.0	331.9	2.0	8,887.6	0.0	8,887.6	(3,195.4)
Q3	27,536.7	26,509.8	1,020.9	6.1	29,861.7	2.6	29,864.3	2,327.6
Oct	7,233.0	6,920.6	310.9	1.4	4,268.7	0.0	4,268.7	(2,964.3)
Nov	7,144.0	6,806.6	335.7	1.7	8,573.4	22.6	8,596.0	1,451.9
Dec	7,959.5	7,661.4	295.9	2.2	7,899.5	0.7	7,900.2	(59.4)
Q4	22,336.6	21,388.7	942.5	5.4	20,741.6	23.3	20,764.9	(1,571.7)
Total_2022	99,899.9	95,709.9	4,166.4	23.5	102,497.8	28.0	102,525.8	2,625.9
Jan_2023	6,033.0	5,752.1	279.3	1.6	7,257.6	0.0	7,257.6	1,224.6
Feb	7,002.7	6,708.0	293.2	1.6	6,094.4	6.1	6,100.5	(902.2)
Mar	7,253.1	6,935.0	316.2	1.9	8,449.5	5.7	8,455.2	1,202.1
Q1	20,288.8	19,395.0	888.7	5.1	21,801.5	11.7	21,813.3	1,524.5
Apr	6,215.9	5,937.8	276.7	1.4	6,633.6	2.7	6,636.3	420.4
May	6,841.9	6,528.6	312.3	1.1	8,919.2	3.4	8,922.6	2,080.7
Jun	6,948.0	6,621.9	324.1	2.1	7,596.2	0.5	7,596.7	648.7
Q2	20,005.9	19,088.3	913.0	4.6	23,149.1	6.6	23,155.7	3,149.8
Jul	7,174.3	6,854.6	318.1	1.7	8,170.2	0.1	8,170.2	995.9
Aug	7,199.0	6,863.5	333.6	1.9	7,849.4	0.5	7,849.8	650.8
Sep	8,473.4	8,129.8	342.0	1.6	5,093.7	0.1	5,093.8	(3,379.6)
Q3	22,846.7	21,847.9	993.7	5.2	21,113.2	0.6	21,113.9	(1,732.9)
Oct	8,597.7	8,241.9	354.2	1.6	3,910.3	3.7	3,914.0	(4,683.7)
Nov	9,737.8	9,364.2	370.9	2.8	3,242.3	0.4	3,242.8	(6,495.0)
Dec	6,686.0	6,389.0	295.0	2.0	4,944.7	0.8	4,945.5	(1,740.5)
Q4	25,021.5	23,995.1	1,020.1	6.3	12,097.3	5.0	12,102.3	(12,919.2)
Total_2023	88,162.9	84,326.3	3,815.5	21.1	78,161.2	23.9	78,185.1	(9,977.8)
Jan_2024	7,740.1	7,420.5	317.4	2.2	5,860.8	0.0	5,860.9	(1,879.3)
Feb	7,448.4	7,115.9	330.8	1.8	4,587.4	0.2	4,587.6	(2,860.8)
Mar	7,143.3	6,840.4	301.1	1.9	6,765.2	14.4	6,779.6	(363.7)
Q1	22,331.9	21,376.7	949.2	5.9	17,213.4	14.6	17,228.0	(5,103.8)
April	7,849.4	7,488.0	359.1	2.2	5,513.1	14.4	5,527.5	(2,321.9)
Change	706.1	647.7	58.1	0.3	(1,252.1)	0.0	(1,252.1)	(1,958.2)
% Change	9.9	9.5	19.3	16.0	(18.5)	0.3	(18.5)	538.3

Change: Difference between the Current and Previous month

Table 2.1: Principal Imports Commodity Groups – January 2022 to April 2024 (Million Pula)

Period \ HS	Chemicals & Rubber Products	Diamonds	Food, Beverages & Tobacco	Fuel	Furniture	Machinery & Electrical Equipment	Metals & Metal Products	Salt Ores & Related Products	Textiles & Footwear	Vehicles & Transport Equipment	Wood & Paper Products	Other Goods	Total Goods
Jan_2022	1,075.5	2,225.2	877.0	1,089.3	39.3	788.9	281.1	60.4	132.1	429.8	130.9	159.0	7,288.5
Feb	628.7	3,295.7	876.5	1,046.3	61.9	1,003.3	351.1	58.9	185.0	429.2	142.2	198.3	8,277.2
Mar	859.2	3,712.3	1,183.1	1,437.6	68.3	1,053.1	509.5	63.7	212.3	514.2	165.7	241.5	10,020.5
Q1	2,563.4	9,233.3	2,936.6	3,573.3	169.4	2,845.3	1,141.8	183.0	529.4	1,373.1	438.8	598.9	25,586.3
Apr	673.3	1,674.8	903.3	1,410.2	61.4	931.9	373.0	58.3	165.3	392.6	140.8	194.2	6,979.2
May	848.8	2,742.7	900.1	1,439.1	105.4	1,106.2	409.1	70.1	182.1	388.9	150.8	234.7	8,578.0
Jun	809.0	1,128.2	2,314.6	1,723.0	69.7	1,136.8	356.0	68.1	166.4	720.4	148.4	242.5	8,883.1
Q2	2,331.1	5,545.6	4,118.0	4,572.3	236.5	3,174.9	1,138.0	196.6	513.8	1,501.9	440.0	671.4	24,440.3
Jul	695.2	1,548.2	978.8	2,295.6	89.4	1,022.4	369.4	67.9	204.4	620.0	163.7	231.4	8,286.5
Aug	738.1	903.9	1,047.5	1,734.4	72.9	965.4	384.0	78.6	215.9	514.8	183.1	328.7	7,167.3
Sep	854.5	5,769.1	1,038.5	1,469.3	74.9	1,100.7	391.2	65.2	215.9	629.5	194.8	279.6	12,083.0
Q3	2,287.7	8,221.2	3,064.8	5,499.2	237.2	3,088.5	1,144.6	211.7	636.2	1,764.2	541.6	839.7	27,536.7
Oct	750.4	1,309.1	1,032.6	1,499.6	80.9	1,066.5	326.6	61.3	203.7	471.5	160.9	270.0	7,233.0
Nov	970.2	641.5	1,175.9	1,521.8	83.0	1,070.4	381.7	63.0	265.5	484.9	193.9	292.3	7,144.0
Dec	767.2	2,351.7	1,013.6	1,670.7	77.4	751.0	313.3	50.5	167.3	367.6	157.9	271.2	7,959.5
Q4	2,487.8	4,302.3	3,222.2	4,692.0	241.3	2,887.8	1,021.6	174.7	636.4	1,324.1	512.8	833.5	22,336.6
Total_2022	9,670.0	27,302.5	13,341.5	18,336.8	884.5	11,996.5	4,446.0	766.0	2,315.9	5,963.3	1,933.3	2,943.5	99,899.9
Jan_2023	640.5	988.8	907.0	1,338.4	46.6	852.5	279.7	56.3	133.4	418.9	134.9	235.8	6,033.0
Feb	771.5	1,352.4	1,259.9	1,288.5	57.3	894.3	376.9	46.6	180.8	421.3	142.9	210.3	7,002.7
Mar	795.4	818.8	1,221.3	1,511.1	68.3	1,111.2	394.7	65.4	235.4	566.0	179.3	286.1	7,253.1
Q1	2,207.4	3,160.0	3,388.3	4,138.0	172.2	2,858.0	1,051.4	168.3	549.6	1,406.2	457.2	732.1	20,288.8
Apr	768.6	765.9	1,093.7	1,366.8	55.9	817.1	352.0	63.6	197.8	382.5	140.3	211.7	6,215.9
May	902.1	874.4	1,013.1	1,311.5	75.3	1,058.4	391.2	77.3	187.3	550.2	161.8	239.4	6,841.9
Jun	904.4	779.6	1,153.2	1,321.9	80.3	1,120.5	422.4	100.1	153.4	528.0	176.9	207.4	6,948.0
Q2	2,575.1	2,419.9	3,260.0	4,000.1	211.6	2,996.0	1,165.6	240.9	538.5	1,460.7	479.1	658.5	20,005.9
Jul	823.9	811.5	1,077.1	1,437.5	67.3	1,015.8	418.1	63.4	173.9	873.6	167.4	244.8	7,174.3
Aug	916.9	597.0	1,255.8	1,486.1	79.8	1,132.6	431.7	74.8	204.6	572.8	183.6	263.4	7,199.0
Sep	779.9	1,435.5	1,321.3	1,823.0	87.8	1,187.7	449.3	64.7	228.9	625.4	171.8	298.3	8,473.4
Q3	2,520.6	2,844.0	3,654.1	4,746.5	235.0	3,336.1	1,299.1	202.9	607.3	2,071.8	522.8	806.5	22,846.7
Oct	859.2	1,436.6	1,474.9	1,798.8	84.6	1,117.8	409.5	61.5	267.5	561.6	186.1	339.5	8,597.7
Nov	1,151.7	2,276.0	1,436.5	1,854.9	89.7	1,131.3	419.3	68.4	277.5	576.7	198.0	257.9	9,737.8
Dec	760.3	1,097.0	1,045.0	1,404.0	79.6	856.6	366.9	82.9	161.9	469.0	159.3	203.5	6,686.0
Q4	2,771.2	4,809.5	3,956.5	5,057.7	254.0	3,105.7	1,195.8	212.8	706.9	1,607.2	543.4	800.9	25,021.5
Total_2023	10,074.3	13,233.5	14,258.9	17,942.3	872.7	12,295.8	4,711.8	824.9	2,402.3	6,545.9	2,002.4	2,998.1	88,162.9
Jan_2024	914.6	1,826.0	1,107.4	1,355.3	45.9	834.2	324.6	94.2	140.2	761.3	147.1	189.4	7,740.1
Feb	879.0	756.8	1,115.6	1,622.8	88.7	1,256.4	429.8	76.1	203.9	591.2	177.0	251.0	7,448.4
Mar	746.2	1,229.0	1,115.4	1,342.5	91.8	1,042.4	370.4	79.0	209.2	508.7	194.2	214.5	7,143.3
Q1	8,613.1	11,302.5	11,985.9	15,146.8	792.3	10,480.2	4,030.8	735.5	2,062.0	5,648.5	1,739.4	2,480.5	75,017.4
Apr	773.1	1,281.5	1,158.7	1,358.1	87.6	1,385.8	420.2	83.4	251.3	597.2	185.4	267.3	7,849.4
Change	26.9	52.4	43.4	15.6	(4.2)	343.4	49.8	4.4	42.0	88.4	(8.8)	52.7	706.1
%Contribution													
2023	11.4	15.0	16.2	20.4	1.0	13.9	5.3	0.9	2.7	7.4	2.3	3.4	100.0
Mar	10.4	17.2	15.6	18.8	1.3	14.6	5.2	1.1	2.9	7.1	2.7	3.0	100.0
Apr	9.8	16.3	14.8	17.3	1.1	17.7	5.4	1.1	3.2	7.6	2.4	3.4	100.0
% Change	3.6	4.3	3.9	1.2	(4.5)	32.9	13.4	5.6	20.1	17.4	(4.6)	24.6	9.9

Change: Difference between the Current and Previous month

Table 2.2 Principal Export Commodity Groups – January 2022 to April 2024 (Million Pula)

Period \ HS	Coal	Copper	Diamonds	Gold	Iron & Steel Products	Live Cattle	Machinery & Electrical Equipment	Meat & Meat Products	Plastic & Plastic Products	Salt & Soda Ash	Textiles	Vehicle & Transport Equipment	Other Goods	Total Goods
Jan_2022	29.7	200.7	7,702.8	35.8	24.3	106.1	94.5	3.8	22.9	68.5	16.1	22.3	118.7	8,446.3
Feb	18.2	208.7	8,060.0	19.2	17.4	107.0	181.0	8.4	25.7	59.8	17.5	39.4	80.7	8,843.0
Mar	35.1	244.0	7,525.8	47.2	20.6	106.4	296.3	15.8	29.1	76.9	20.8	34.9	97.2	8,550.2
Q1	83.0	653.5	23,288.6	102.2	62.3	319.4	571.9	28.0	77.8	205.2	54.4	96.6	296.6	25,839.6
Apr	40.6	367.3	5,586.4	31.0	21.9	88.0	211.9	12.3	28.5	42.1	23.2	69.0	84.4	6,606.8
May	66.9	314.6	7,882.7	0.0	22.8	133.9	241.4	19.4	30.9	75.2	34.0	34.5	189.1	9,045.3
Jun	46.3	257.9	9,261.0	43.8	26.9	137.7	237.6	22.2	37.3	93.2	25.5	58.0	157.4	10,404.9
Q2	153.9	939.8	22,730.1	74.8	71.6	359.6	690.9	54.0	96.8	210.5	82.7	161.5	430.8	26,057.1
Jul	60.2	414.9	8,819.4	35.5	23.8	97.4	243.8	14.2	34.0	72.6	23.9	35.5	186.6	10,062.0
Aug	64.6	449.9	9,646.0	30.1	20.1	85.1	217.6	8.8	31.4	125.5	33.1	55.9	146.6	10,914.7
Sep	71.3	304.5	7,760.6	14.1	19.8	14.1	279.3	3.5	36.3	109.1	25.4	116.2	133.3	8,887.6
Q3	196.1	1,169.3	26,226.0	79.7	63.8	196.6	740.7	26.5	101.7	307.3	82.4	207.6	466.5	29,864.3
Oct	85.7	468.9	2,997.5	16.8	20.8	141.4	210.8	4.4	33.8	89.7	29.8	30.0	139.0	4,268.7
Nov	65.1	319.3	7,392.2	16.3	19.9	85.3	295.7	16.2	28.7	91.3	35.0	45.8	185.2	8,596.0
Dec	62.1	466.1	6,669.5	18.3	10.8	82.7	130.8	7.7	22.2	101.9	35.5	110.0	182.7	7,900.2
Q4	212.9	1,254.2	17,059.3	51.4	51.4	309.4	637.4	28.2	84.7	282.9	100.3	185.8	506.9	20,764.9
Total_2022	646.0	4,016.9	89,304.0	308.2	249.2	1,185.0	2,640.9	136.6	361.0	1,006.0	319.8	651.5	1,700.8	102,525.8
Jan_2023	68.6	523.8	6,028.1	16.5	12.0	116.1	204.6	3.2	34.8	106.6	22.8	24.4	96.2	7,257.6
Feb	52.5	454.0	4,857.5	23.1	25.2	116.7	294.5	7.3	28.5	65.7	19.5	63.8	92.0	6,100.5
Mar	46.7	465.9	7,281.7	33.5	18.6	76.6	248.6	12.8	35.4	86.4	22.1	37.8	89.2	8,455.2
Q1	167.8	1,443.8	18,167.3	73.1	55.9	309.3	747.7	23.4	98.6	258.6	64.4	125.9	277.4	21,813.3
Apr	39.5	388.2	5,620.3	40.0	16.7	64.6	179.7	19.9	25.2	87.9	27.4	39.9	87.1	6,636.3
May	54.4	544.6	7,531.2	27.8	26.0	69.7	269.1	23.9	32.9	57.5	45.3	63.7	176.6	8,922.6
Jun	42.0	424.4	6,368.0	21.1	28.7	69.4	265.1	36.5	33.4	68.2	31.8	58.9	149.3	7,596.7
Q2	135.9	1,357.2	19,519.5	88.8	71.4	203.7	713.9	80.3	91.6	213.6	104.5	162.5	412.9	23,155.7
Jul	34.1	636.0	6,777.8	17.4	23.5	26.0	285.7	38.1	27.1	117.4	30.9	32.9	123.2	8,170.2
Aug	30.0	654.3	6,361.5	23.0	27.4	29.6	344.1	58.8	31.5	102.6	30.1	35.2	121.7	7,849.8
Sep	28.2	733.8	3,599.9	19.0	25.4	28.6	267.8	38.9	45.8	106.6	31.4	25.8	142.8	5,093.8
Q3	92.2	2,024.1	16,739.2	59.4	76.3	84.2	897.7	135.7	104.4	326.6	92.3	93.9	387.7	21,113.9
Oct	23.4	705.2	2,387.0	21.4	43.9	16.3	280.9	40.4	37.2	100.2	37.1	91.5	129.5	3,914.0
Nov	26.9	784.7	1,528.2	30.0	30.8	14.9	312.0	28.0	114.1	93.8	40.2	30.1	209.1	3,242.8
Dec	20.5	651.3	3,633.2	13.7	25.2	19.1	112.0	17.8	22.2	214.3	37.6	23.2	155.6	4,945.5
Q4	70.7	2,141.1	7,548.4	65.0	99.9	50.3	704.8	86.3	173.5	408.2	114.9	144.7	494.3	12,102.3
Total_2023	466.6	6,966.2	61,974.5	286.3	303.5	647.6	3,064.1	325.7	468.1	1,207.1	376.1	527.1	1,572.3	78,185.1
Jan_2024	25.7	885.9	4,295.0	20.5	14.7	32.2	214.2	21.4	26.0	141.9	27.2	71.2	84.9	5,860.9
Feb	23.1	674.4	3,117.3	6.1	23.6	42.5	309.5	113.8	33.5	87.9	28.3	28.8	98.8	4,587.6
Mar	26.0	778.7	5,253.1	3.4	33.1	50.0	237.4	38.4	39.7	131.6	28.3	22.9	137.0	6,779.6
Q1	74.8	2,339.0	12,665.4	30.0	71.4	124.7	761.2	173.7	99.2	361.4	83.7	122.9	320.7	17,228.0
Apr	26.3	654.3	4,155.5	0.4	19.3	42.1	264.5	34.3	35.7	118.5	48.8	33.9	93.9	5,527.5
Change	0.3	(124.4)	(1,097.6)	(3.0)	(13.8)	(7.9)	27.1	(4.0)	(4.0)	(13.1)	20.6	11.0	(43.1)	(1,252.1)
%Contribution														
2023	0.6	8.9	79.3	0.4	0.4	0.8	3.9	0.4	0.6	1.5	0.5	0.7	2.0	100.0
Mar	0.4	11.5	77.5	0.1	0.5	0.7	3.5	0.6	0.6	1.9	0.4	0.3	2.0	100.0
Apr	0.5	11.8	75.2	0.0	0.3	0.8	4.8	0.6	0.6	2.1	0.9	0.6	1.7	100.0
% Change	1.0	(16.0)	(20.9)	(87.0)	(41.8)	(15.8)	11.4	(10.5)	(10.2)	(10.0)	72.8	48.2	(31.5)	(18.5)

Change: Difference between the Current and Previous month

Table 2.3: Diamonds Trade – January 2022 to April 2024 (Million Pula)

Period \ HS	Imports						Total Exports					
	71021000	71022100	71022900	71023100	71023900	Total	71021000	71022100	71022900	71023100	71023900	Total
Jan_2022	0.0	11.8	0.0	1,922.0	291.4	2,225.2	0.0	8.2	0.0	6,726.8	967.7	7,702.8
Feb	0.0	18.6	0.0	2,756.0	521.1	3,295.7	0.0	53.2	0.0	6,729.9	1,276.9	8,060.0
Mar	512.4	14.4	0.0	2,526.8	658.7	3,712.3	0.0	28.3	0.0	5,919.0	1,578.5	7,525.8
Q1	512.4	44.8	0.0	7,204.8	1,471.3	9,233.3	0.0	89.8	0.0	19,375.8	3,823.1	23,288.6
Apr	0.0	0.1	0.0	851.9	822.8	1,674.8	0.0	29.1	0.0	4,311.7	1,245.5	5,586.4
May	0.0	295.3	0.0	1,619.3	828.0	2,742.7	0.0	20.7	0.0	6,034.3	1,827.7	7,882.7
Jun	374.7	1.6	0.0	183.0	568.9	1,128.2	0.0	41.0	0.0	7,577.3	1,642.7	9,261.0
Q2	374.8	296.9	0.0	2,654.3	2,219.7	5,545.6	0.0	90.8	0.0	17,923.4	4,715.9	22,730.1
Jul	371.6	0.0	0.0	239.7	936.9	1,548.2	0.0	44.3	0.0	7,382.3	1,392.8	8,819.4
Aug	323.3	0.4	0.0	168.5	411.8	903.9	0.0	62.0	0.0	7,573.2	2,010.9	9,646.0
Sep	415.3	0.8	0.0	5,088.8	264.3	5,769.1	0.0	37.8	0.0	5,827.4	1,895.4	7,760.6
Q3	1,110.2	1.2	0.0	5,496.9	1,613.0	8,221.2	0.0	144.1	0.0	20,782.8	5,299.0	26,226.0
Oct	349.2	0.1	0.0	591.5	368.4	1,309.1	0.0	0.0	0.0	1,644.0	1,353.5	2,997.5
Nov	21.2	7.0	0.0	321.7	291.6	641.5	2.4	55.4	0.0	5,656.9	1,677.5	7,392.2
Dec	534.2	4.8	0.0	1,092.2	720.5	2,351.7	5.9	36.7	0.0	5,405.1	1,221.9	6,669.5
Q4	904.6	11.9	0.0	2,005.3	1,380.5	4,302.3	8.3	92.1	0.0	12,705.9	4,253.0	17,059.3
Total_2022	2,902.0	354.8	0.0	17,361.3	6,684.4	27,302.5	8.3	416.8	0.0	70,788.0	18,091.0	89,304.0
Jan_2023	320.2	0.5	0.0	135.3	532.9	988.8	0.0	34.7	0.0	5,101.8	891.5	6,028.1
Feb	925.2	0.1	0.0	117.3	309.8	1,352.4	0.0	32.2	0.0	3,520.2	1,305.1	4,857.5
Mar	426.4	0.2	0.0	76.0	316.2	818.8	0.0	33.3	0.0	5,537.0	1,711.3	7,281.7
Q1	1,671.7	0.8	0.0	328.6	1,158.9	3,160.0	0.0	100.2	0.0	14,159.1	3,907.9	18,167.3
Apr	0.0	0.0	0.0	561.2	204.7	765.9	0.0	47.5	0.0	4,323.2	1,249.6	5,620.3
May	237.7	0.8	0.0	201.0	434.8	874.4	0.0	27.8	0.0	5,954.7	1,548.8	7,531.2
Jun	26.8	0.2	0.0	431.8	320.9	779.6	342.2	45.2	0.0	4,659.1	1,321.5	6,368.0
Q2	264.5	1.0	0.0	1,194.0	960.4	2,419.9	342.2	120.5	0.0	14,936.9	4,119.9	19,519.5
Jul	383.7	0.0	0.0	62.7	365.1	811.5	31.0	33.2	0.0	4,941.0	1,772.6	6,777.8
Aug	272.7	0.1	0.0	77.0	247.3	597.0	0.0	101.3	0.0	4,552.5	1,707.7	6,361.5
Sep	0.0	0.3	0.0	1,077.3	357.9	1,435.5	0.0	0.9	0.0	2,432.0	1,166.9	3,599.9
Q3	656.4	0.4	0.0	1,216.9	970.4	2,844.0	31.0	135.5	0.0	11,925.4	4,647.3	16,739.2
Oct	581.2	0.0	0.0	459.6	395.8	1,436.6	0.0	1.7	0.0	591.8	1,793.5	2,387.0
Nov	0.3	0.0	0.1	1,687.4	588.2	2,276.0	0.0	57.2	0.0	329.2	1,141.8	1,528.2
Dec	260.5	1.0	0.0	545.3	290.2	1,097.0	0.0	1.0	0.0	2,819.3	812.9	3,633.2
Q4	842.0	1.0	0.1	2,692.3	1,274.2	4,809.5	0.0	59.9	0.0	3,740.3	3,748.3	7,548.4
Total_2023	3,434.7	3.1	0.1	5,431.7	4,363.9	13,233.5	373.2	416.1	0.0	44,761.8	16,423.3	61,974.5
Jan_2024	373.2	0.0	0.0	1,268.5	184.3	1,826.0	0.0	9.3	0.0	3,915.8	369.9	4,295.0
Feb	283.8	0.2	0.0	357.6	115.3	756.8	0.0	38.6	0.0	2,762.1	316.7	3,117.3
Mar	370.1	0.0	0.0	807.7	51.2	1,229.0	0.0	9.4	0.0	4,446.2	797.4	5,253.1
Q1	1,027.1	0.2	0.0	2,433.8	350.8	3,811.8	0.0	57.3	0.0	11,124.1	1,484.0	12,665.4
Apr	226.5	0.4	0.0	721.0	333.7	1,281.5	0.0	9.8	0.0	3,567.5	578.1	4,155.5

Note: 71022100: Industrial Diamonds unworked or simply sawn, cleaved or bruited; 71022900: Industrial Diamonds, not mounted or set, NES; 71023100: Non-industrial diamonds unworked or simply sawn, cleaved or bruited; 71023900: Non-industrial diamonds, not mounted or set NES; 71021000: Unsorted diamonds; HS: Harmonised System Code; NES: Not Elsewhere Specified.

Table 3.1A: Total Imports by Country, Region and Principal Import Commodity Groups - April 2024 (Million Pula)

Partner \ HS	Chemicals & Rubber Products	Diamonds	Food, Beverages & Tobacco	Fuel	Furniture	Machinery & Electrical Equipment	Metals & Metal Products	Salt Ores & Related Products	Textiles & Footwear	Vehicles & Transport Equipment	Wood & Paper Products	Other Goods	Total Goods	% Contribution
South Africa	553.3	3.5	1,062.8	827.8	75.8	614.8	329.6	67.9	198.1	420.1	164.4	175.8	4,493.9	57.3
Namibia	1.5	724.4	20.3	339.0	0.1	3.7	3.9	15.4	0.2	3.4	0.5	0.5	1,112.7	14.2
Eswatini	12.0	0.0	10.3	0.0	0.0	0.0	0.0	0.0	0.0	0.0	2.1	0.0	24.5	0.3
Lesotho	0.0	3.8	0.0	0.0	0.0	0.0	0.0	0.0	1.2	0.1	0.0	0.0	5.0	0.1
SACU	566.8	731.7	1,093.5	1,166.8	75.9	618.4	333.5	83.3	199.4	423.6	167.0	176.3	5,636.1	71.8
Mozambique	0.0	0.0	5.3	168.5	0.0	0.0	0.0	0.0	1.2	0.0	0.0	0.0	175.0	2.2
Other SADC	3.3	0.1	14.1	19.0	0.3	4.9	18.4	0.1	2.3	0.1	2.9	6.2	71.8	0.9
SADC	570.0	731.8	1,112.9	1,354.3	76.3	623.3	351.9	83.4	203.0	423.7	169.9	182.5	5,882.9	74.9
Other Africa	1.2	0.0	0.1	0.0	0.0	4.8	0.0	0.0	0.0	0.0	0.0	0.6	6.8	0.1
Africa	571.3	731.8	1,113.0	1,354.3	76.3	628.2	351.9	83.4	203.0	423.7	169.9	183.1	5,889.7	75.0
China	30.9	0.0	0.2	0.0	8.6	259.3	34.2	0.0	28.4	14.7	11.3	17.4	405.1	5.2
India	68.0	248.4	0.5	0.0	0.6	45.4	10.2	0.0	5.9	0.2	0.9	4.2	384.1	4.9
Japan	5.9	0.0	0.0	0.0	0.0	5.6	0.0	0.0	2.7	87.5	0.0	1.2	103.1	1.3
Other Asia	10.6	31.2	3.2	2.4	0.6	41.3	8.1	0.0	3.9	7.0	0.5	10.0	118.8	1.5
Asia	115.5	279.6	4.0	2.4	9.7	351.6	52.5	0.0	40.9	109.5	12.7	32.8	1,011.2	12.9
Germany	34.7	0.0	2.2	0.0	0.1	38.8	1.2	0.0	5.2	8.0	1.5	7.2	98.9	1.3
Other EU	32.2	10.1	11.1	1.3	0.2	113.7	6.6	0.0	1.2	13.0	0.2	26.6	216.3	2.8
EU	66.9	10.1	13.4	1.3	0.2	152.4	7.8	0.0	6.4	21.0	1.7	33.8	315.2	4.0
Canada	0.0	258.6	0.0	0.0	0.0	1.4	0.5	0.0	0.0	0.3	0.0	0.1	261.0	3.3
USA	10.9	1.0	24.6	0.1	0.8	173.7	1.9	0.0	0.2	11.2	0.7	13.8	238.9	3.0
Rest of the World	8.5	0.4	3.8	0.0	0.6	78.5	5.5	0.0	0.7	31.4	0.3	3.7	133.5	1.7
World	773.1	1,281.5	1,158.7	1,358.1	87.6	1,385.8	420.2	83.4	251.3	597.2	185.4	267.3	7,849.4	100.0

Table 3.1B: Total Imports by Country, Region and Principal Import Commodity Groups - April 2024 (Million Pula)

Partner \ HS	Chemicals & Rubber Products	Diamonds	Food, Beverages & Tobacco	Fuel	Furniture	Machinery & Electrical Equipment	Metals & Metal Products	Salt Ores & Related Products	Textiles & Footwear	Vehicles & Transport Equipment	Wood & Paper Products	Other Goods	Total Goods
South Africa	12.3	0.1	23.7	18.4	1.7	13.7	7.3	1.5	4.4	9.3	3.7	3.9	100.0
Namibia	0.1	65.1	1.8	30.5	0.0	0.3	0.3	1.4	0.0	0.3	0.0	0.0	100.0
Eswatini	48.9	0.0	42.2	0.0	0.0	0.0	0.0	0.0	0.0	0.0	8.7	0.0	100.0
Lesotho	0.2	75.4	0.0	0.0	0.0	0.0	0.0	0.0	23.1	1.2	0.0	0.0	100.0
SACU	10.1	13.0	19.4	20.7	1.3	11.0	5.9	1.5	3.5	7.5	3.0	3.1	100.0
Mozambique	0.0	0.0	3.0	96.3	0.0	0.0	0.0	0.0	0.7	0.0	0.0	0.0	100.0
Other SADC	4.5	0.2	19.7	26.5	0.5	6.8	25.6	0.1	3.3	0.2	4.1	8.6	100.0
SADC	9.7	12.4	18.9	23.0	1.3	10.6	6.0	1.4	3.5	7.2	2.9	3.1	100.0
Other Africa	18.4	0.0	1.5	0.0	0.0	71.1	0.0	0.0	0.6	0.2	0.0	8.1	100.0
AFRICA	9.7	12.4	18.9	23.0	1.3	10.7	6.0	1.4	3.4	7.2	2.9	3.1	100.0
China	7.6	0.0	0.1	0.0	2.1	64.0	8.4	0.0	7.0	3.6	2.8	4.3	100.0
India	17.7	64.7	0.1	0.0	0.1	11.8	2.7	0.0	1.5	0.1	0.2	1.1	100.0
Japan	5.8	0.0	0.0	0.0	0.0	5.5	0.0	0.0	2.6	84.9	0.0	1.2	100.0
Other Asia	8.9	26.3	2.7	2.0	0.5	34.8	6.8	0.0	3.3	5.9	0.4	8.4	100.0
Asia	11.4	27.7	0.4	0.2	1.0	34.8	5.2	0.0	4.0	10.8	1.3	3.2	100.0
Germany	35.1	0.0	2.3	0.0	0.1	39.2	1.2	0.0	5.2	8.1	1.5	7.3	100.0
Other EU	14.9	4.7	5.1	0.6	0.1	52.6	3.1	0.0	0.6	6.0	0.1	12.3	100.0
EU	21.2	3.2	4.2	0.4	0.1	48.4	2.5	0.0	2.0	6.7	0.6	10.7	100.0
Canada	0.0	99.1	0.0	0.0	0.0	0.5	0.2	0.0	0.0	0.1	0.0	0.0	100.0
USA	4.6	0.4	10.3	0.0	0.3	72.7	0.8	0.0	0.1	4.7	0.3	5.8	100.0
Rest of the World	6.3	0.3	2.9	0.0	0.5	58.8	4.1	0.0	0.5	23.6	0.2	2.8	100.0
World	9.8	16.3	14.8	17.3	1.1	17.7	5.4	1.1	3.2	7.6	2.4	3.4	100.0

Table 3.2A: Total Exports by Country, Region and Principal Export Commodity Groups – April 2024 (Million Pula)

Period \ HS	Coal	Copper	Diamonds	Gold	Iron & Steel Products	Live Cattle	Machinery & Electrical Equipment	Meat & Meat Products	Plastic & Plastic Products	Salt & Soda Ash	Textiles	Vehicle & Transport Equipment	Other Goods	Total Goods	% Contribution
South Africa	24.8	0.3	19.5	0.4	15.6	41.9	219.3	32.2	24.0	96.6	19.5	20.3	25.0	539.4	9.8
Namibia	1.4	2.3	171.3	0.0	0.8	0.0	11.2	1.0	6.1	0.0	1.2	4.9	8.3	208.4	3.8
Lesotho	0.0	0.0	0.0	0.0	0.0	0.0	0.4	0.0	0.0	0.0	0.0	0.0	0.1	0.5	0.0
Eswatini	0.0	0.0	0.0	0.0	0.0	0.0	0.4	0.0	0.0	0.0	0.0	0.0	0.0	0.4	0.0
SACU	26.3	2.6	190.8	0.4	16.4	41.9	231.3	33.2	30.1	96.6	20.7	25.1	33.4	748.7	13.5
Zimbabwe	0.0	0.0	0.0	0.0	0.3	0.0	14.4	0.0	2.7	10.7	27.8	5.3	26.0	87.1	1.6
Other SADC	0.0	0.0	0.0	0.0	1.2	0.2	14.1	1.1	2.9	11.1	0.4	1.5	22.9	55.5	1.0
SADC	26.3	2.6	190.8	0.4	17.8	42.1	259.8	34.3	35.7	118.5	48.8	31.9	82.3	891.2	16.1
Other Africa	0.0	0.0	0.0	0.0	0.0	0.0	0.3	0.0	0.0	0.0	0.0	0.7	0.6	1.6	0.0
Africa	26.3	2.6	190.8	0.4	17.8	42.1	260.1	34.3	35.7	118.5	48.8	32.7	82.8	892.9	16.2
UAE	0.0	0.0	1,377.0	0.0	0.0	0.0	0.2	0.0	0.0	0.0	0.0	0.0	0.3	1,377.6	24.9
India	0.0	0.0	1,231.6	0.0	1.4	0.0	0.0	0.0	0.0	0.0	0.0	0.0	0.4	1,233.3	22.3
China	0.0	343.8	0.0	0.0	0.0	0.0	0.0	0.0	0.0	0.0	0.0	0.0	1.1	344.9	6.2
Israel	0.0	0.0	255.6	0.0	0.0	0.0	0.0	0.0	0.0	0.0	0.0	0.0	0.1	255.7	4.6
Hong Kong	0.0	0.0	95.0	0.0	0.0	0.0	0.0	0.0	0.0	0.0	0.0	0.0	0.0	95.0	1.7
Singapore	0.0	0.0	88.4	0.0	0.0	0.0	0.0	0.0	0.0	0.0	0.0	0.0	0.0	88.5	1.6
Other Asia	0.0	0.0	56.1	0.0	0.0	0.0	0.0	0.0	0.0	0.0	0.0	0.0	3.1	59.3	1.1
Asia	0.0	343.8	3,103.8	0.0	1.4	0.0	0.3	0.0	0.0	0.0	0.0	0.0	5.0	3,454.2	62.5
Belgium	0.0	0.0	717.2	0.0	0.0	0.0	0.0	0.0	0.0	0.0	0.0	0.0	0.2	717.4	13.0
Other EU	0.0	0.0	0.0	0.0	0.1	0.0	3.9	0.0	0.0	0.0	0.0	0.7	3.2	7.9	0.1
EU	0.0	0.0	717.2	0.0	0.1	0.0	3.9	0.0	0.0	0.0	0.0	0.7	3.5	725.4	13.1
Australia	0.0	259.3	0.0	0.0	0.0	0.0	0.0	0.0	0.0	0.0	0.0	0.0	1.7	261.1	4.7
UK	0.0	0.0	96.0	0.0	0.0	0.0	0.0	0.0	0.0	0.0	0.0	0.0	0.1	96.1	1.7
Rest of the World	0.0	48.6	47.7	0.0	0.0	0.0	0.3	0.0	0.0	0.0	0.0	0.5	0.8	97.8	1.8
World	26.3	654.3	4,155.5	0.4	19.3	42.1	264.5	34.3	35.7	118.5	48.8	33.9	93.9	5,527.5	100.0

Table 3.2B: Total Exports by Country, Region and Principal Export Commodity Groups – April 2024 (Million Pula)

Period \ HS	Coal	Copper	Diamonds	Gold	Iron & Steel Products	Live Cattle	Machinery & Electrical Equipment	Meat & Meat Products	Plastic & Plastic Products	Salt & Soda Ash	Textiles	Vehicle & Transport Equipment	Other Goods	Total Goods
South Africa	4.6	0.1	3.6	0.1	2.9	7.8	40.7	6.0	4.4	17.9	3.6	3.8	4.6	100.0
Namibia	0.7	1.1	82.2	0.0	0.4	0.0	5.4	0.5	2.9	0.0	0.6	2.3	4.0	100.0
Lesotho	0.0	0.0	0.0	0.0	0.0	0.0	86.1	0.0	0.0	0.0	0.0	0.0	13.9	100.0
Eswatini	0.0	0.0	0.0	0.0	0.0	0.0	87.1	0.0	0.5	0.0	1.9	0.0	10.6	100.0
SACU	3.5	0.3	25.5	0.1	2.2	5.6	30.9	4.4	4.0	12.9	2.8	3.4	4.5	100.0
Zimbabwe	0.0	0.0	0.0	0.0	0.3	0.0	16.5	0.0	3.1	12.3	31.9	6.0	29.8	100.0
Other SADC	0.0	0.0	0.0	0.0	2.1	0.4	25.4	2.0	5.2	20.1	0.7	2.8	41.3	100.0
SADC	2.9	0.3	21.4	0.1	2.0	4.7	29.1	3.9	4.0	13.3	5.5	3.6	9.2	100.0
Other Africa	0.0	0.0	0.0	0.0	0.0	0.0	17.1	0.0	0.0	0.0	0.5	46.1	36.3	100.0
Africa	2.9	0.3	21.4	0.0	2.0	4.7	29.1	3.8	4.0	13.3	5.5	3.7	9.3	100.0
UAE	0.0	0.0	100.0	0.0	0.0	0.0	0.0	0.0	0.0	0.0	0.0	0.0	0.0	100.0
India	0.0	0.0	99.9	0.0	0.1	0.0	0.0	0.0	0.0	0.0	0.0	0.0	0.0	100.0
China	0.0	99.7	0.0	0.0	0.0	0.0	0.0	0.0	0.0	0.0	0.0	0.0	0.3	100.0
Israel	0.0	0.0	100.0	0.0	0.0	0.0	0.0	0.0	0.0	0.0	0.0	0.0	0.0	100.0
Hong Kong	0.0	0.0	100.0	0.0	0.0	0.0	0.0	0.0	0.0	0.0	0.0	0.0	0.0	100.0
Singapore	0.0	0.0	100.0	0.0	0.0	0.0	0.0	0.0	0.0	0.0	0.0	0.0	0.0	100.0
Other Asia	0.0	0.0	94.8	0.0	0.0	0.0	0.0	0.0	0.0	0.0	0.0	0.0	5.2	100.0
Asia	0.0	10.0	89.9	0.0	0.0	0.0	0.0	0.0	0.0	0.0	0.0	0.0	0.1	100.0
Belgium	0.0	0.0	100.0	0.0	0.0	0.0	0.0	0.0	0.0	0.0	0.0	0.0	0.0	100.0
Other EU	0.0	0.0	0.0	0.0	0.6	0.0	49.0	0.0	0.2	0.0	0.0	9.3	40.8	100.0
EU	0.0	0.0	98.9	0.0	0.0	0.0	0.5	0.0	0.0	0.0	0.0	0.1	0.5	100.0
Australia	0.0	99.3	0.0	0.0	0.0	0.0	0.0	0.0	0.0	0.0	0.0	0.0	0.6	100.0
UK	0.0	0.0	99.9	0.0	0.0	0.0	0.0	0.0	0.0	0.0	0.0	0.0	0.1	100.0
Rest of the World	0.0	49.7	48.7	0.0	0.0	0.0	0.3	0.0	0.0	0.0	0.0	0.5	0.8	100.0
World	0.5	11.8	75.2	0.0	0.3	0.8	4.8	0.6	0.6	2.1	0.9	0.6	1.7	100.0

Table 4.1 A: Top Imported Goods (Excluding Diamonds) – April 2024 (Million Pula)

Rank	HS Code	HS Description	BW Pula	Contribution(%) Against Total Non Diamonds Imports	Contribution(%) Against Total Imports
1	27101230	Distillate fuel, as defined in Additional Note 1 (g)	747.9	11.3	9.5
2	27101202	Petrol, as defined in Additional Note 1 (b)	404.9	6.1	5.2
3	87032390	Other motor cars and other motor vehicles principally designed for the transport of persons	115.7	1.7	1.5
4	84314990	Other parts suitable for use solely or principally with the machinery of headings 84.25 to 84.30:	104.5	1.6	1.3
5	27160000	Electrical energy	98.2	1.5	1.3
6	30049099	Other medicaments consisting of mixed or unmixed products for therapeutic or prophylactic use	96.1	1.4	1.2
7	25232900	Other Portland cement	77.8	1.2	1.0
8	84292000	Graders and levellers	77.2	1.2	1.0
9	84295190	Other Machinery with a 360° revolving super structure	70.0	1.1	0.9
10	10059010	Dried Maize (Corn) kernels or grains fit for human consumption, not further prepared or processed and not packaged as seeds (excluding pop corn (ZEA MAYS EVERTA))	69.0	1.0	0.9
11	22021010	Waters, including mineral waters and aerated waters, in sealed containers holding 2,5 litres or less (excluding those in collapsible plastic tubes)	61.6	0.9	0.8
12	22030090	Other beer made from malt	53.7	0.8	0.7
13	85444990	Other Insulated (including enamelled or anodised) wire, cable (including co-axial cable)	51.7	0.8	0.7
14	87089990	Other Parts and accessories of the motor vehicles of headings 87.01 to 87.05	48.0	0.7	0.6
15	87043181	Other, double-cab, of a vehicle mass not exceeding 2 000 kg or a G.V.M. not exceeding 3 500 kg, or of a mass not exceeding 1 600 kg or a G.V.M. not exceeding 3 500 kg per chassis fitted with a cab	43.9	0.7	0.6
16	10019900	Other (of Wheat (excluding durum wheat) and Meslin)	41.8	0.6	0.5
17	87033390	Other, used vehicles of cylinder capacity exceeding 2500 cm	40.8	0.6	0.5
18	33049990	Other Beauty or make-up preparations and preparations for the care of the skin (other than medicaments), including sunscreen or sun tan preparations	40.2	0.6	0.5
19	87042181	Other, double-cab, of a vehicle mass not exceeding 2 000 kg or a G.V.M. not exceeding 3 500 kg, or of a mass not exceeding 1 600 kg or a G.V.M. not exceeding 3 500 kg per chassis fitted with a cab	39.8	0.6	0.5
20	40118020	New pneumatic tyres, of rubber, of a kind used on construction, mining or industrial handling	34.2	0.5	0.4
21	10059090	Other (Maize (Corn))	34.0	0.5	0.4
22	85177900	Aerials and aerial reflectors of all kind; parts suitable for use therewith	32.3	0.5	0.4
23	15121910	Sunflower-seed or safflower oil and fractions thereof, Marketed and supplied for use in the process of cooking food	31.8	0.5	0.4
24	85176290	Apparatus designed for use when carried in the hand or on the person (excluding two-way radios)	30.6	0.5	0.4
25	87041090	Other- Dumpers designed for off-highway use	29.0	0.4	0.4

Table 4.1 A: Top Imported Goods (Excluding Diamonds) – March 2024 (Million Pula) Continued

Rank	HS Code	HS Description	BW Pula	Contribution(%) Against Total Non Diamonds Imports	Contribution(%) Against Total Imports
26	87100000	Tanks and other armoured fighting vehicles, motorised, whether or not fitted with weapons, and parts of such vehicles.	28.6	0.4	0.4
27	90189000	Other instruments and appliances	28.6	0.4	0.4
28	22060081	Other fermented apple or pear beverages, unfortified, with an alcoholic strength of at least 2.5 per cent by volume but not exceeding 15 per cent by volume	27.9	0.4	0.4
29	23040000	Oil-cake and other solid residues, whether or not ground or in the form of pellets, resulting from the extraction of soya-bean oil	27.3	0.4	0.3
30	84295900	Other Front-end shovel loaders	26.8	0.4	0.3
31	84749000	Parts Machinery for sorting, screening, separating, washing, crushing, grinding, mixing or kneading earth, stone, ores or other mineral substances	25.5	0.4	0.3
32	84713090	Other Automatic data processing machines and units thereof;	25.2	0.4	0.3
33	19023000	Other pasta	24.8	0.4	0.3
34	85171310	Designed for use when carried in the hand or on the person	24.5	0.4	0.3
35	34012000	Soap in other forms	24.4	0.4	0.3
36	44071100	Coniferous Wood sawn or chipped lengthwise, sliced or peeled, whether or not planed	24.1	0.4	0.3
37	39019090	Other Polymers of ethylene	23.9	0.4	0.3
38	17011300	Cane sugar specified in Subheading Note 2 to this Chapter	23.7	0.4	0.3
39	27111390	Other Butanes, Liquefied	23.7	0.4	0.3
40	22029990	Other non-alcoholic beverages, not including fruit or vegetable juices of heading 20.09)	23.5	0.4	0.3
41	01022100	Pure-bred breeding animals (cattle)	23.2	0.3	0.3
42	30039090	Other - Medicaments (excluding goods of heading 30.02, 30.05 or 30.06) consisting of two or more constituents which have been mixed together for therapeutic or prophylactic uses	22.8	0.3	0.3
43	87032190	Other - Vehicles specially designed for travelling on snow; golf cars and similar vehicles	22.5	0.3	0.3
44	73089099	Other Structures and parts of structures	22.3	0.3	0.3
45	39269099	Other articles of plastics and articles of other materials of headings 39.01 to 39.14	21.9	0.3	0.3
46	87012920	Road tractors for semi-trailers Of a vehicle mass exceeding 1 600 kg	20.6	0.3	0.3
47	84149090	Other Parts: For air or vacuum pumps, air or other gas compressors and fans; ventilating or recycling hoods incorporating a fan,	20.5	0.3	0.3
48	10063000	Semi-milled or wholly milled rice, whether or not polished or glazed	20.4	0.3	0.3
49	20099010	Mixtures of Fruit juices	20.1	0.3	0.3
50	62171090	Other clothing accessories	20.1	0.3	0.3
Top 50 Imported Non Diamond Goods			3,071.6	46.4	39.1
Other Non Diamond Imports Goods			3,554.2	53.6	45.3
Total Non-Diamond Goods			6,625.8	100.0	84.4
Diamonds Imports			1,223.6		15.6
Total Imports			7,849.4		100.0

Table 4.1 B: Top Exported Goods (Excluding Diamonds) – April 2024 (Million Pula)

Rank	HS Code	HS Description	BW Pula	Contribution(%) Against Total Non Diamonds Imports	Contribution(%) Against Total Imports
1	26030000	Copper ores and concentrates	653.9	47.7	11.8
2	85443000	Ignition wiring sets and other wiring sets of a kind used in vehicles, aircraft or ships	127.6	9.3	2.3
3	28362000	Disodium carbonate	92.2	6.7	1.7
4	85444290	"Other - Ignition wiring sets and other wiring sets of a kind used in vehicles, aircraft or ships For a voltage exceeding 80 V but not exceeding 240 V "	49.7	3.6	0.9
5	01022100	Pure-bred breeding animals (cattle)	32.2	2.3	0.6
6	02023090	Other (boneless meat of bovine animals, frozen)	32.2	2.3	0.6
7	25010090	Other Salt, pure sodium chloride or sea water	25.4	1.9	0.5
8	39172300	Tubes, pipes and hoses, rigid, Of polymers of vinyl chloride	22.4	1.6	0.4
9	63026090	Other Toilet linen and kitchen linen, of terry towelling or similar terry fabrics, of cotton	16.9	1.2	0.3
10	27011200	Bituminous coal	15.6	1.1	0.3
11	27011900	Other coal	10.7	0.8	0.2
12	01022900	Other (cattle)	9.9	0.7	0.2
13	62171090	Other clothing accessories	9.4	0.7	0.2
14	84314990	Other Parts suitable for use solely or principally with the machinery of headings 84.25 to 84.30	8.9	0.6	0.2
15	64059090	Other footwear	7.8	0.6	0.1
16	85176290	Apparatus designed for use when carried in the hand or on te person (excluding two-way radios)	7.6	0.6	0.1
17	87032390	Other Vehicles specially designed for travelling on snow; golf cars nd similar vehicles	7.1	0.5	0.1
18	85446090	Other electric conductors	6.6	0.5	0.1
19	60069000	Other knitted or crocheted fabrics	6.4	0.5	0.1
20	68101100	Building blocks and bricks	6.3	0.5	0.1
21	72142000	Other bars and rods of iron or non-alloy steel - Containing indentations, ribs, grooves or other deformations produced during the rolling process or twisted after rolling	6.2	0.5	0.1
22	84303900	Other moving, grading, levelling, strapping, excavating, tamping, compacting, extracting or boring machinery,	5.1	0.4	0.1
23	87059000	Other Special purpose motor vehicles, other than those principally designed for the transport of persons or goods	5.0	0.4	0.1
24	24022090	Other Cigarettes containing tobacco	4.9	0.4	0.1
25	11031310	Maize meal not further processed other than by the addition of minerals and vitamins not exceeding 1 per cent by mass of the final product, solely for the purpose of increasing the nutritional value	4.4	0.3	0.1

Table 4.1 B: Top Exported Goods (Excluding Diamonds) – April 2024 (Million Pula) Continued.

Rank	HS Code	HS Description	BW Pula	Contribution(%) Against Total Non Diamonds Imports	Contribution(%) Against Total Imports
26	61121900	Track suits, Of other textile materials	4.1	0.3	0.1
27	84295900	Other Front-end shovel loaders	4.0	0.3	0.1
28	94069090	Other Prefabricated buildings	3.9	0.3	0.1
29	63019000	Other blankets and travelling rugs	3.9	0.3	0.1
30	11031390	Other (Groats and meal of maize (corn))	3.8	0.3	0.1
31	84314300	Parts for boring or sinking machinery of subheading 8430.41 or 8430.49	3.8	0.3	0.1
32	84293000	Scrapers	3.7	0.3	0.1
33	87041090	Other Motor vehicles for the transport of goods	3.4	0.2	0.1
34	87042110	Shuttle cars for use in underground mines; low construction flame-proof vehicles, equipped with control mechanisms both in the front and at the rear, for use in underground mines	3.2	0.2	0.1
35	39251000	Reservoirs, tanks, vats and similar containers, of a capacity exceeding 300 li	3.0	0.2	0.1
36	08054010	Fresh Grapefruit, including pomelos	2.9	0.2	0.1
37	76020090	Other aluminium waste and scrap	2.8	0.2	0.1
38	30024200	Vaccines for veterinary medicine	2.8	0.2	0.1
39	78020000	Lead waste and scrap	2.7	0.2	0.0
40	85285990	Other monitors	2.5	0.2	0.0
41	68129100	Clothing, clothing accessories, footwear and headgear	2.5	0.2	0.0
42	72043000	Waste and scrap of finned iron or steel	2.4	0.2	0.0
43	87021090	Other Motor vehicles for the transport of ten or more persons	2.4	0.2	0.0
44	58081000	Braids in the piece	2.3	0.2	0.0
45	87089990	Other, of unmachined cast metal	2.2	0.2	0.0
46	72042100	Ferrous waste and scrap Of stainless steel	2.2	0.2	0.0
47	72165000	Other angles, shapes and sections, not further worked than hot-rolled, hot-drawn or extruded	2.2	0.2	0.0
48	73089099	Other Structures and parts of structures	2.0	0.1	0.0
49	84198900	Other machinery, plant and equipment	1.9	0.1	0.0
50	42034000	Other clothing accessories	1.9	0.1	0.0
Top 50 Exported Non-Diamond Goods			1,246.8	90.9	22.6
Other Non-Diamond Exports Goods			92.9	6.8	1.7
Total Non-Diamond Exports			1,372.0	100.0	24.8
Diamonds Exports			4,155.5		75.2
Total Exports			5,527.5		100.0

8.0 Concepts, Sources and Methods

IMTS are compiled by the International Merchandise Trade Statistics Section of Statistics Botswana, and uses the General Trade system. International Merchandise Trade refers to external trade in goods only. International Service Trade Statistics (ISTS) are however not compiled by this section. The primary source of international merchandise trade data is the Customs & Excise Division at the Botswana Unified Revenue Service (BURS). The Customs & Excise Division is responsible for data capture for both computerised and manual borders, and the monthly raw data files are transferred to Statistics Botswana for data processing.

Imports are valued CIF (cost, insurance & freight), while exports are valued FOB (free on board). The value of imports includes transport and insurance costs to the importing country. The Exports value consists only of the value of goods as they leave the exporting country.

8.1 Time of Recording of Trade

IMTS is compiled using date of recording of trade as opposed to date of assessment of goods by customs. This means that as goods cross the border, trade is recorded and this is the reference month for compilation of IMTS. Some of these goods may however be held by customs for some time pending final assessment for tax or duty purposes.

If the final assessment is done later, for example two or three months, or even more, after the goods had crossed the border, the affected trade will then update trade for the particular month when the goods crossed the border, therefore it does not form part of trade for the month during which the final assessment was done. This is mostly common with imports. Revision of data for the month preceding the one under review will normally show high values as compared to revisions for other months due to more goods (from the previous month) being released after final assessment.

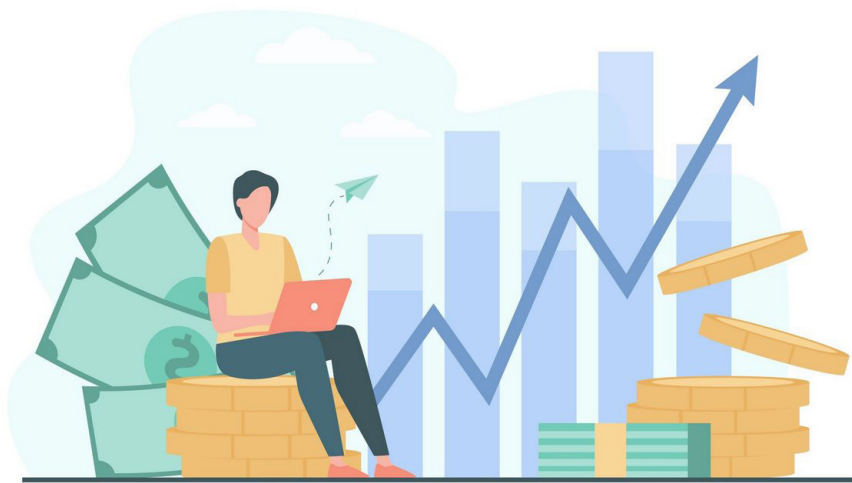
8.2 Concepts and Definitions

- i. **Domestic Exports:** These are goods originating from the compiling country, being permanently exported out of the country for consumption in the outside world. This includes products from customs inwards processing; for example, if a country imports wheat, processes the wheat into bread flour and exports the bread flour and bye products from the milling process, these will all leave the country as domestic exports.
- ii. **Re - Exports:** These are exports of foreign goods that were initially recorded as imports into the compiling country. These goods are exported in the same state that they came in except for wear and tear. An example will be re-exportation of a motor vehicle that was initially imported into the compiling country and after being used it is now being exported to a foreign country.
- iii. **Total exports:** This is the sum of domestic exports and re-exports
- iv. **Imports:** These are goods imported from the outside world, into the compiling country, for local consumption. This includes re-importation of locally produced goods that were initially exported and are now being imported back into the country.
- v. **Trade Balance (Net Export):** This refers to the total value of goods exported minus the total value of goods imported by a given economy in a given period of time. A positive trade balance (trade surplus) indicates that a country is exporting more in value terms than it is importing. A negative trade balance (trade deficit) indicates that the country is importing more than it is exporting.

8.3 Exclusions from IMTS

- i. **Goods in Transit** - This is trade that is simply passing through the compiling country solely for the purpose of being transported to another country.
- ii. **Goods temporarily admitted or dispatched** - These are goods that, at the time of admission/dispatch, are intended to stay in the receiving country temporarily and that after their stay they will be returned in the same state. These goods include display equipment for trade fairs and exhibitions, commercial samples, means of transport, containers, equipment for working, etc.
- iii. **Monetary Gold**- This is gold to which the monetary authorities have title and is held as reserve assets.
- iv. **Issued banknotes and securities and coins in circulation**-These goods represent evidence of financial claims and are excluded from IMTS

The above list of exclusions from IMTS is, however, not exhaustive and only a few that are common, simple, straightforward and easy to understand have been picked as examples.



INTERNATIONAL MERCHANDISE TRADE STATISTICS

Monthly Digest- April 2024



Private Bag 0024, Gaborone
Tel: 3671300 **Fax:** 3952201
Toll Free: 0800 600 200

Private Bag F193,
Francistown
Tel: 241 5848 **Fax:** 241 7540

Private Bag 32
Ghanzi
Tel: 371 5723 **Fax:** 659 7506

Private Bag 47
Maun
Tel: 371 5716 **Fax:** 686 4327

E-mail: info@statsbots.org.bw **Website:** <http://www.statsbots.org.bw>



STATISTICS BOTSWANA