



CONSUMER PRICE INDEX SEPTEMBER 2024



Copyright 2024 © Statistics Botswana

Contact Statistician:

Rejoyce L Mbalekelwa

Tel: 3671300/3671319

Private Bag 0024, Gaborone

Tel: 3671300

Toll Free: 0800 600 200

E-mail: info@statsbots.org.bw

Website: www.statsbots.org.bw



STATISTICS BOTSWANA

Preface

This report examines Botswana's monthly inflation rate performance as measured by the Consumer Price Index (CPI). The CPI serves as an essential gauge for tracking changes in the cost of living and reflects the dynamics of price fluctuations in the economy. In this report, Statistics Botswana examines both month-on-month and year-on-year changes in the CPI to offer insights into Botswana's inflationary trends.

Accurate and timely Price Statistics play a crucial role in influencing socio-economic and monetary policies. By providing policymakers with a clear understanding of inflationary pressures, price statistics support in the formulation of effective policy interventions. Statistics Botswana recognises the importance of this data, and therefore generates the Consumer Price Index on a monthly basis, aligning with the various informational needs of stakeholders.

In September 2024, Botswana recorded an annual inflation rate of 1.5 percent, registering a decrease of 2.4 percentage points from the August rate of 3.9 percent.

Statistics Botswana extends sincere appreciation to all stakeholders who contributed invaluable insights and data for the compilation of this publication.

For more information and further enquiries, contact the Directorate of Stakeholder Relations at **+267 367 1300**. This publication and all other Statistics Botswana outputs/publications are available on the website at <http://www.statsbots.org.bw> and at the Statistics Botswana Information Resource Centre (Head-Office, Gaborone).



Dr. Lucky Mokgatlhe
Acting Statistician General
15th October 2024

Contents

Preface	i
Section 1: Headline Inflation	1
Section 2: Core Inflation	2
Glossary	13

Charts

Chart 1: National Rate Of Inflation	2
Chart 2: Monthly Changes In The Consumer Price Index	2
Chart 3: Non-Tradeables Inflation Rate	2
Chart 4: Tradeables Inflation Rate	2
Chart 5: Contribution Of Groups To Annual Inflation Rate	3

Tables

Table 1: Contribution Of Groups To Annual Inflation Rate	4
Table 2: Consumer Price Index (December 2018 =100.0)	5
Table 3: National Consumer Price Group & Section Indices (December 2018 = 100.0)	7
Table 4: Consumer Price Index By Tradeability (December 2018 = 100.0)	9
Table 5: Core Inflation Rates By Exclusion And Trimmed Mean	10
Table 6: Average Annual Inflation (December 2018 = 100.0)	11

Consumer Price Index

Section 1: Headline Inflation

In September 2024, Botswana's annual inflation rate fell to 1.5 percent, registering a decrease of 2.4 percentage points from the August 2024 rate of 3.9 percent. The primary contributors to the annual inflation in September were the Miscellaneous Goods and Services and Food and Non-Alcoholic Beverages indices, each contributing 0.7 of a percentage point. Notably, the Transport group was the primary factor in the decline of the annual inflation rate, contributing a negative 0.8 of a percentage point. [Refer to Table 1](#) and [Chart 5](#).

Between August and September 2024, inflation rates showed variability across different regions. In Rural Villages, the inflation rate declined by 2.9 percentage points, from 4.6 percent in August to 1.7 percent in September. Urban Villages' inflation rate dropped to 1.4 percent a decrease of 2.4 percentage points, from the August rate of 3.8 percent. Cities & Towns experienced a decrease of 2.2 percentage points, from 3.7 percent in August to 1.5 percent in September. [Refer to Table 2](#)

The national Consumer Price Index (CPI) declined by 0.7 percent, from 134.8 in August to 133.9 in September 2024. In September, the indices for Cities and Towns, Urban Villages, and Rural Villages each recorded a reduction of 0.7 percent. Specifically, the index for Cities and Towns fell from 134.7 in August to 133.8 in September, the Urban Villages index decreased from 134.9 to 134.0, while the Rural Villages index dropped from 135.0 to 134.0. [Refer to Table 2](#).

Most group indices remained relatively stable between August and September 2024, with changes of less than 1.0 percent, except for the Transport group, which experienced a 3.0 percent decrease. [Refer to Table 2](#).

The Transport group index was 150.0 in September 2024, a drop of 3.0 percent from the August index of 154.5. The decrease was due to a decline in the constituent section index of Operation of Personal Transport which went down by 5.3 percent. The overall decrease in the Operation of Personal Transport section index was a result of the fall in retail pump prices for diesel (50ppm) and Petrol (95) by P0.95 and P1.07 per litre respectively, which effected on 11th September 2024. [Refer to Table 3](#).

The Alcoholic Beverages & Tobacco index rose by 0.5 percent, from 138.0 in August to 138.8 in September 2024. The rise was due to the increase in section indices of Alcoholic Beverages and Tobacco by 0.6 and 0.4 percent respectively. [Refer to Table 3](#).

The Food & Non-Alcoholic Beverages index went up by 0.3 percent, from 146.9 in August to 147.3 in September 2024. This growth was largely due to the rise in the section indices for Vegetables (1.3 percent), Fish (Fresh, Chilled & Frozen) (1.2 percent), and Coffee, Tea & Cocoa (1.1 percent). [Refer to Table 3](#).

In September 2024, the All-Tradeables index registered a drop of 1.2 percent, from 141.6 in August to 139.9 in September. The Imported Tradeables Index realised a decline of 1.6 percent, from 142.0 to 139.7, while the Domestic Tradeables Index grew by 0.2 percent, from 142.0 to 142.4. The Non-Tradeables Index remained unchanged at 125.7. [Refer to Table 4](#).

The All-Tradeables inflation rate was 0.9 percent in September 2024, down by 4.0 percentage points from the August rate of 4.9 percent. The Imported Tradeables inflation rate decreased by 5.4 percentage points, from 5.2 percent to -0.2 percent. The Domestic Tradeables inflation rate rose to 4.3 percent in September 2024, an increase of 0.2 of a percentage point from the August rate of 4.1 percent. In contrast, the Non-Tradeables inflation rate registered at 2.4 percent in September, a decline of 0.1 of a percentage point from the August rate of 2.5 percent. [Refer to Table 4](#).

Section 2: Core Inflation

The Trimmed Mean Core inflation rate decreased by 2.2 percentage points, from 3.7 percent in August to 1.5 percent in September 2024. The Core Inflation rate, excluding administered prices, was 3.1 percent in September 2024, a decrease of 0.1 of a percentage point from the August rate of 3.2 percent. [Refer to Table 5.](#)

Charts

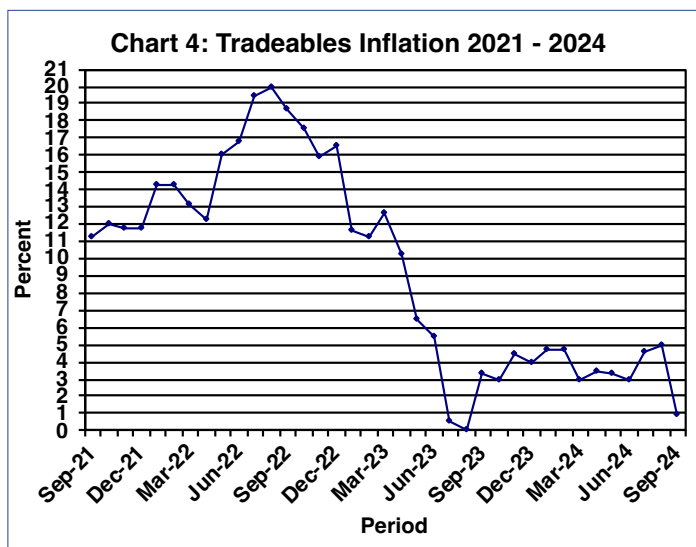
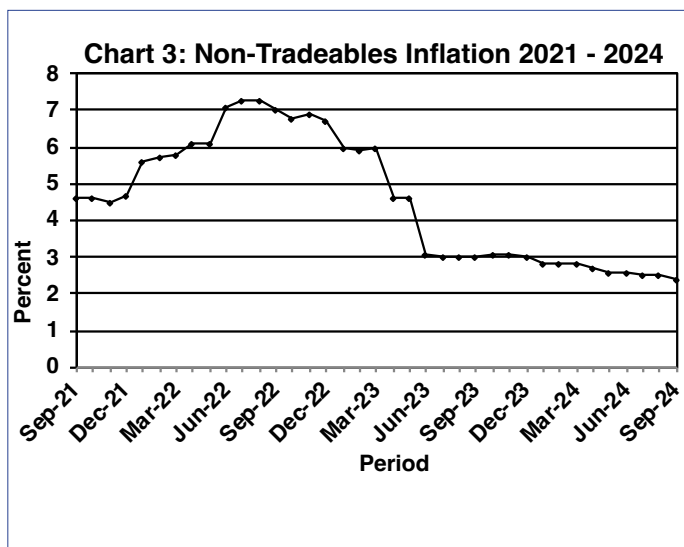
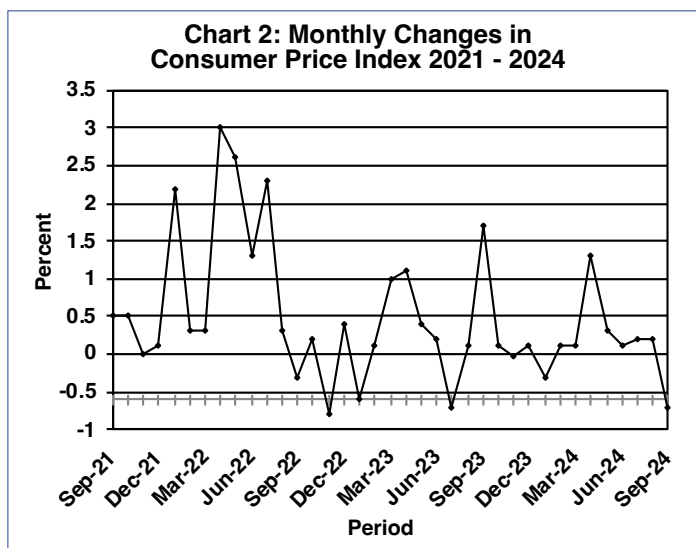
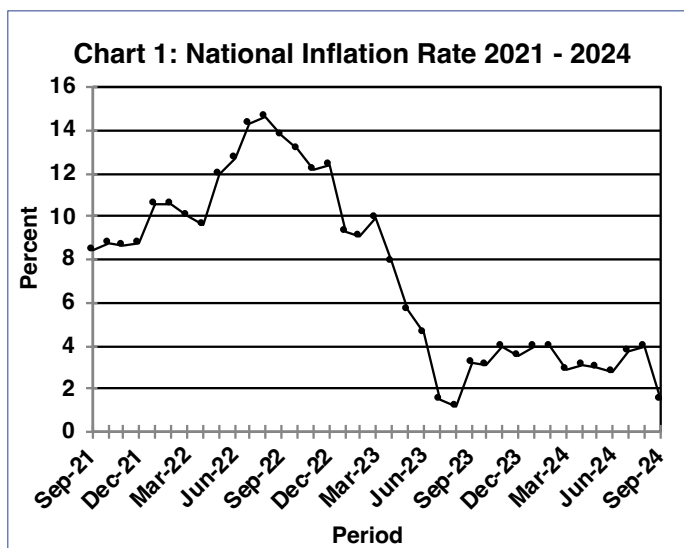
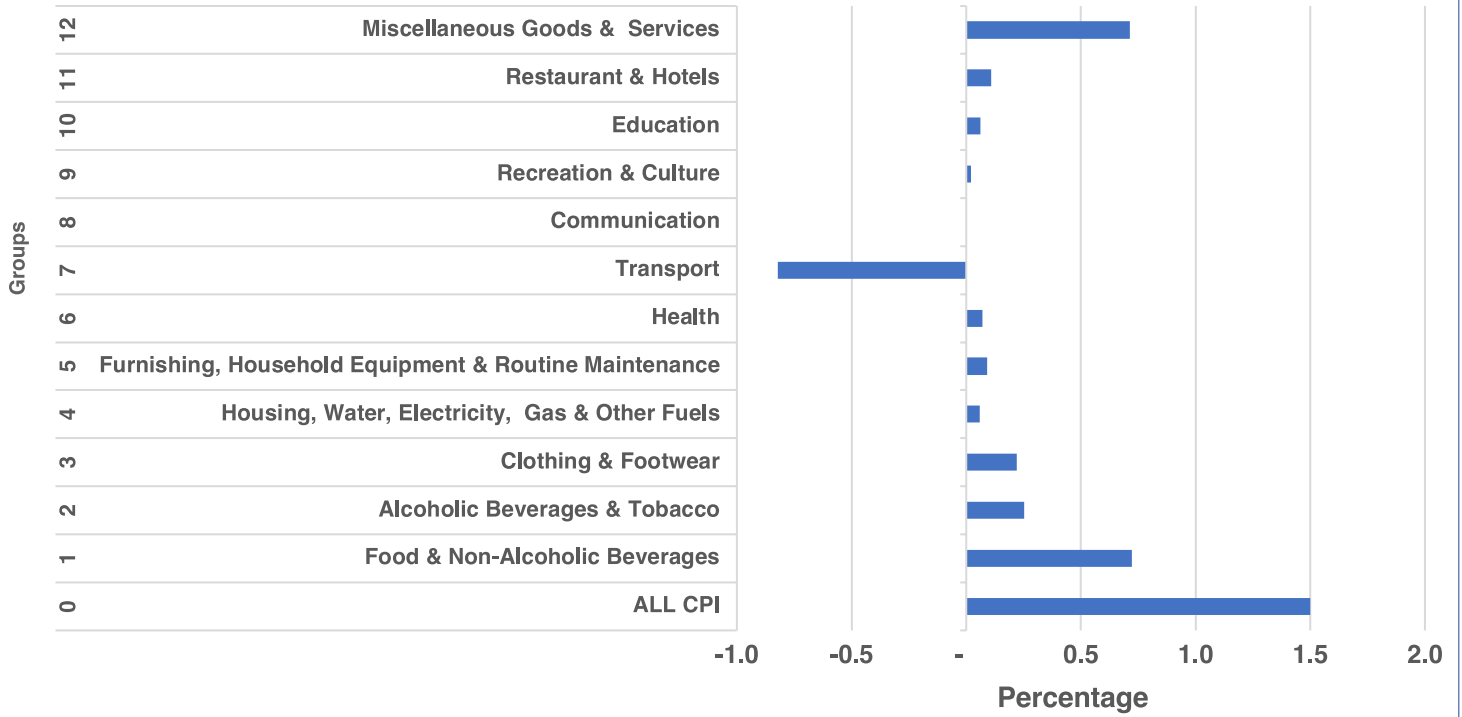


Chart 5: Contribution to Annual Inflation Rate September 2024



Tables

Table 1: Contribution of Groups to Annual Inflation Rate

Group Code	Group Name	CONTRIBUTION		
		Jul-24	Aug-24	Sep-24
0	All Items Inflation Rate	3.7	3.9	1.5
1	Food & Non-Alcoholic Beverages	0.6	0.7	0.7
2	Alcoholic Beverages & Tobacco	0.2	0.2	0.3
3	Clothing & Footwear	0.2	0.2	0.2
4	Housing, Water, Electricity, Gas & Other Fuels	0.1	0.1	0.1
5	Furnishing, Household Equipment & Routine Maintenance	0.1	0.1	0.1
6	Health	0.0	0.1	0.1
7	Transport	1.5	1.5	-0.8
8	Communication	0.0	0.0	0.0
9	Recreation & Culture	0.0	0.0	0.0
10	Education	0.1	0.1	0.1
11	Restaurants & Hotels	0.1	0.1	0.1
12	Miscellaneous Goods & Services	0.7	0.7	0.7

Note: Figures may vary slightly due to the rounding off

TABLE 2 : Consumer Price Index (December 2018 =100.0)

		Food	Alcohol and Tobacco	Clothing and Footwear	Housing	Furniture etc	Health	Transport	Communi-cation	Rec. & Culture	Education	Rest. & Hotels	Miscella-neous
	Weights	13.55	4.34	5.95	17.45	4.85	3.38	23.43	6.94	2.82	4.60	3.66	9.01
2022	Jan	114.8	122.1	108.6	117.5	110.6	105.8	126.2	102.3	105.2	112.3	110.4	115.0
	Feb	115.3	122.2	108.7	117.6	110.9	106.0	127.0	102.3	105.4	112.4	110.7	115.4
	Mar	116.0	122.5	109.0	118.0	110.8	106.2	127.2	102.5	105.7	112.5	110.8	115.6
	Apr	118.6	123.2	109.4	122.3	111.6	106.6	134.5	102.5	107.4	112.6	111.5	121.2
	May	121.6	124.0	110.4	122.7	112.7	107.0	144.2	102.6	108.2	112.7	112.9	121.7
	Jun	123.8	124.3	111.2	123.1	113.5	107.3	148.7	102.6	108.4	112.8	113.4	123.0
	Jul	126.4	124.4	111.6	123.5	114.3	107.7	158.1	102.8	108.9	112.8	114.5	123.9
	Aug	128.2	124.4	111.7	123.0	114.6	107.9	158.5	103.9	109.2	112.8	114.9	124.3
	Sept	130.3	124.3	112.5	123.1	115.5	108.0	155.3	104.0	109.1	112.8	115.1	124.5
	Oct	132.0	124.6	113.1	123.0	115.9	108.4	155.4	104.0	109.3	112.8	115.4	124.4
	Nov	132.7	125.0	113.7	122.9	116.3	108.7	150.0	104.8	108.9	112.8	116.3	124.3
	Dec	133.8	124.8	114.0	123.0	116.9	109.1	151.0	104.8	108.8	112.8	116.4	124.8
2023	Jan	134.5	125.1	114.4	123.0	117.5	109.4	145.6	105.0	108.9	118.5	117.1	125.0
	Feb	135.3	125.6	114.8	123.0	118.0	109.5	145.1	105.0	108.9	118.5	117.4	125.3
	Mar	136.6	126.5	115.8	123.3	118.9	109.7	148.9	105.1	108.9	118.5	117.8	125.5
	Apr	138.2	128.7	116.4	124.3	119.8	110.5	149.5	105.1	110.2	118.5	118.9	132.5
	May	139.0	129.8	116.8	124.4	120.1	111.1	150.4	105.2	110.4	118.5	120.1	133.4
	Jun	139.7	130.2	117.4	124.7	119.9	111.1	150.6	105.2	110.5	118.5	120.9	133.7
	Jul	139.9	130.7	117.9	124.6	120.4	110.6	146.1	105.3	110.9	118.5	121.2	134.4
	Aug	139.8	131.1	118.1	124.5	121.0	110.8	146.1	105.3	111.4	118.6	121.8	134.5
	Sep	140.3	131.1	118.7	124.6	121.5	110.5	154.6	105.5	111.4	118.6	122.3	134.8
	Oct	140.6	131.7	119.5	124.4	121.7	110.7	154.4	105.5	111.4	118.6	122.5	135.2
	Nov	141.6	132.2	119.7	124.4	122.3	110.9	153.3	105.6	111.7	118.6	123.0	135.3
	Dec	141.9	132.3	120.1	124.5	122.7	111.2	153.2	105.6	111.9	118.6	123.6	135.4
2024	Jan	142.5	132.8	120.2	124.5	123.5	111.2	150.3	105.8	112.0	120.0	123.9	136.0
	Feb	143.1	133.0	120.6	124.5	123.7	111.4	150.1	105.7	112.1	120.2	124.0	136.1
	Mar	143.5	133.2	120.8	124.9	124.2	111.6	149.9	105.6	112.3	120.3	124.4	136.2
	Apr	144.0	134.8	121.4	124.9	124.0	111.6	153.4	105.6	112.5	120.3	124.7	144.1
	May	144.5	136.4	122.0	124.9	124.0	111.8	154.4	105.5	112.5	120.3	124.8	144.5
	Jun	145.3	136.5	122.8	125.1	124.0	111.9	153.8	105.6	112.5	120.3	125.0	144.6
	Jul	146.1	137.3	122.7	125.3	123.4	112.0	154.2	105.6	112.3	120.3	125.3	145.0
	Aug	146.9	138.0	123.2	125.2	123.9	113.1	154.5	105.6	112.1	120.3	125.7	145.2
	Sep	147.3	138.8	123.7	125.1	124.1	113.3	150.0	105.5	112.4	120.3	126.1	145.2
% Change on Last month	0.3	0.5	0.4	(0.1)	0.2	0.2	(3.0)	(0.1)	0.3	0.0	0.4	0.0	

Note: Figures may vary slightly due to the rounding off

TABLE 2: Consumer Price Index (Cont.)

		All Items Index	National Inflation Rate	Monthly Change	Towns & Cities Index	Urban Village Index	Rural Villages Index	Annual Inflation		
								Towns & Cities	Urban Villages	Rural
		100.0	%	%	0.38	0.41	0.21	%	%	%
2022	Jan	116.0	10.6	2.2	116.1	116.2	115.4	10.7	10.4	10.7
	Feb	116.3	10.6	0.3	116.4	116.7	115.6	10.8	10.4	10.6
	Mar	116.6	10.0	0.3	116.6	117.0	115.9	10.1	9.9	9.9
	Apr	120.1	9.6	3.0	120.5	120.4	118.8	9.9	9.4	9.6
	May	123.2	11.9	2.6	123.3	123.6	122.2	11.8	11.8	12.1
	Jun	124.8	12.7	1.3	125.0	125.1	124.0	12.7	12.4	13.1
	Jul	127.7	14.3	2.3	127.7	128.0	127.2	14.3	14.2	14.8
	Aug	128.1	14.6	0.3	128.0	128.5	127.7	14.5	14.5	15.1
	Sept	127.8	13.8	(0.3)	127.6	128.2	127.5	13.6	13.5	14.7
	Oct	128.1	13.1	0.2	128.0	128.4	127.8	12.9	12.8	13.8
	Nov	127.1	12.2	(0.8)	127.0	127.3	127.0	12.1	11.8	13.0
	Dec	127.6	12.4	0.4	127.4	127.8	127.6	12.3	12.2	13.3
2023	Jan	126.8	9.3	(0.6)	126.9	127.1	126.1	9.3	9.4	9.3
	Feb	126.9	9.1	0.1	126.9	127.3	126.1	9.0	9.1	9.1
	Mar	128.2	9.9	1.0	128.2	128.4	127.9	9.9	9.7	10.4
	Apr	129.7	7.9	1.1	129.7	130.0	129.0	7.6	7.9	8.6
	May	130.2	5.7	0.4	130.2	130.5	129.7	5.6	5.6	6.1
	Jun	130.5	4.6	0.2	130.5	130.9	130.0	4.4	4.6	4.8
	Jul	129.7	1.5	(0.7)	129.8	130.0	128.8	1.6	1.5	1.3
	Aug	129.7	1.2	0.1	129.8	130.0	129.0	1.5	1.2	1.0
	Sep	131.9	3.2	1.7	131.8	132.1	131.8	3.3	3.1	3.4
	Oct	132.0	3.1	0.1	132.0	132.1	131.9	3.2	2.9	3.1
	Nov	132.0	3.9	(0.0)	132.0	132.0	132.0	4.0	3.7	3.9
	Dec	132.1	3.5	0.1	132.1	132.1	132.1	3.7	3.4	3.5
2024	Jan	131.8	3.9	(0.3)	131.9	131.8	131.4	4.0	3.7	4.2
	Feb	131.9	3.9	0.1	132.0	131.9	131.5	4.0	3.7	4.3
	Mar	132.0	2.9	0.1	132.1	132.0	131.6	3.1	2.8	2.9
	Apr	133.7	3.1	1.3	133.8	133.9	133.2	3.2	3.0	3.2
	May	134.2	3.0	0.3	134.1	134.4	133.8	3.0	2.9	3.2
	Jun	134.2	2.8	0.1	134.2	134.4	134.0	2.8	2.7	3.1
	Jul	134.5	3.7	0.2	134.5	134.7	134.2	3.6	3.7	4.2
	Aug	134.8	3.9	0.2	134.7	134.9	135.0	3.7	3.8	4.6
	Sep	133.9	1.5	(0.7)	133.8	134.0	134.0	1.5	1.4	1.7
% Change on last month		(0.7)			(0.7)	(0.7)	(0.7)			

Note: Figures may vary slightly due to the rounding off

TABLE 3: National Consumer Price Group And Section Indices (December 2018=100.0)

	Group Section	Weights	This month Sep 2024	Last month Aug 2024	3 months ago Jun 2024	6 months ago Mar 2024	12 months ago Sep 2023	Percentage Change on:			
								Last month	3 months ago	6 months ago	12 months ago
1	Food & Non-Alcoholic Beverages	13.55	147.3	146.9	145.3	143.5	140.3	0.3	1.4	2.7	5.0
1.1	Bread & Cereals	4.26	160.5	160.4	157.9	155.7	152.8	0.0	1.6	3.1	5.0
1.2	Meat (Fresh, Chilled & Frozen)	2.36	146.8	146.4	146.9	146.9	138.2	0.2	(0.1)	(0.1)	6.2
1.3	Fish (Fresh, Chilled & Frozen)	0.18	137.1	135.4	133.9	134.5	134.1	1.2	2.4	2.0	2.2
1.4	Milk, Cheese & Milk Products	0.98	134.0	133.9	131.6	130.3	128.8	0.1	1.9	2.8	4.1
1.5	Oils & Fats	0.92	157.1	157.7	161.5	167.1	173.2	(0.4)	(2.7)	(6.0)	(9.3)
1.6	Fruits	0.78	124.9	123.9	127.7	126.5	121.4	0.8	(2.3)	(1.3)	2.9
1.7	Vegetables	1.08	162.2	160.1	152.4	141.6	142.6	1.3	6.5	14.5	13.8
1.8	Sugar, Jam, Honey, Chocolate & Confectionery	1.11	125.0	124.6	122.3	120.5	115.6	0.3	2.2	3.7	8.1
1.9	Food Not Elsewhere Classified	0.54	138.1	137.8	137.0	136.0	131.5	0.3	0.9	1.6	5.0
1.10	Coffee, Tea & Cocoa	0.73	142.9	141.4	135.3	131.0	126.6	1.1	5.7	9.0	12.8
1.11	Mineral Waters, Soft Drinks, Fruits & Vegetables Juices	0.62	124.3	124.2	123.6	122.4	120.8	0.0	0.6	1.6	2.9
2	Alcoholic Beverages & Tobacco	4.34	138.8	138.0	136.5	133.2	131.1	0.5	1.7	4.2	5.8
2.1	Alcoholic Beverages	3.51	141.1	140.3	138.5	134.8	132.5	0.6	1.9	4.7	6.5
2.2	Tobacco	0.82	128.7	128.2	127.7	126.3	125.1	0.4	0.7	1.9	2.8
3	Clothing & Footwear	5.95	123.7	123.2	122.8	120.8	118.7	0.4	0.7	2.4	4.1
3.1	Clothing	2.60	123.8	123.4	122.9	120.9	118.8	0.4	0.8	2.4	4.3
3.2	Other Articles of Clothing	0.72	122.5	122.2	121.4	120.2	118.9	0.2	0.9	2.0	3.1
3.3	Cleaning, Repair & Hire	0.61	136.3	136.1	135.6	130.0	129.6	0.1	0.5	4.8	5.1
3.4	Footwear	2.03	120.0	119.4	119.4	118.0	115.4	0.5	0.5	1.7	4.0
4	Housing, Water, Electricity, Gas & Other Fuels	17.45	125.1	125.2	125.1	124.9	124.6	(0.1)	(0.0)	0.1	0.4
4.1	Rent Paid by Tenants	7.78	123.5	123.9	123.9	123.3	122.4	(0.3)	(0.3)	0.1	0.9
4.2	Materials for Maintenance & Repair of Dwellings	3.83	126.9	126.3	125.8	126.0	126.5	0.5	0.8	0.6	0.2
4.3	Water Supply & Miscellaneous Services	1.96	112.7	112.7	112.7	112.7	112.7	0.0	0.0	0.0	0.0
4.4	Electricity, Gas & Other Fuels	3.89	132.7	133.0	133.0	133.1	133.2	(0.3)	(0.3)	(0.3)	(0.4)
5	Furnishing, H/H Equipment & Routine Maintenance	4.85	124.1	123.9	124.0	124.2	121.5	0.2	0.0	(0.1)	2.1
5.1	Furniture & Furnishing	1.35	118.7	119.0	120.4	121.1	117.8	(0.3)	(1.4)	(2.0)	0.7
5.2	Carpets & Other Floor Coverings	0.27	114.4	114.5	114.6	115.0	116.5	(0.2)	(0.2)	(0.5)	(1.8)
5.3	Household Textiles	0.29	120.6	120.2	119.7	118.4	116.4	0.3	0.8	1.9	3.6
5.4	Household Appliances	0.72	129.4	128.9	127.9	128.2	125.7	0.4	1.2	0.9	2.9
5.5	Glassware, Tableware & Household Utensils	0.23	132.7	132.5	132.0	131.6	129.4	0.2	0.5	0.8	2.5
5.6	Small Tools, Miscellaneous Accessories	0.04	127.1	127.4	127.5	127.4	125.5	(0.2)	(0.4)	(0.3)	1.3
5.7	Goods & Services for Household Maintenance	1.95	126.6	126.1	126.1	125.9	123.1	0.4	0.4	0.5	2.9
6	Health	3.38	113.3	113.1	111.9	111.6	110.5	0.2	1.2	1.5	2.5
6.1	Medical Products, Applications & Equipments	0.98	128.9	128.3	124.4	123.8	121.4	0.5	3.7	4.2	6.2
6.2	Out-Patient Services	0.93	111.4	111.4	111.2	110.8	109.2	0.0	0.2	0.6	2.0
6.3	Hospital Services	1.47	104.1	104.1	104.1	104.1	104.1	0.0	0.0	0.0	0.0

Note: Figures may vary slightly due to the rounding off

TABLE 3: National Consumer Price Group And Section Indices (December 2018=100.0) (Cont.)

	Group Section	Weights	This month Sep 2024	Last month Aug 2024	3 months ago Jun 2024	6 months ago Mar 2024	12 months ago Sep 2023	Percentage Change on:			
								Last month	3 months ago	6 months ago	12 months ago
7	Transport	23.43	150.0	154.5	153.8	149.9	154.6	(3.0)	(2.5)	0.1	(3.0)
7.1	Purchase of Vehicles	5.74	155.4	155.6	153.1	150.8	152.3	(0.2)	1.5	3.1	2.0
7.2	Operation of Personal Transport	12.56	150.0	158.4	158.2	151.9	160.0	(5.3)	(5.2)	(1.3)	(6.3)
7.3	Transport Services	5.13	143.8	143.8	143.8	143.8	143.8	0.0	0.0	0.0	0.0
8	Communication	6.94	105.5	105.6	105.6	105.6	105.5	(0.1)	(0.1)	(0.1)	0.0
8.1	Postal Services	0.21	127.5	127.5	127.5	127.5	127.5	0.0	0.0	0.0	0.0
8.2	Telephone & Telefax Equipment	1.13	116.9	117.8	117.7	117.5	116.9	(0.8)	(0.7)	(0.5)	0.0
8.3	Telephone & Telefax Services	5.60	102.3	102.3	102.3	102.3	102.3	0.0	0.0	0.0	0.0
9	Recreation & Culture	2.82	112.4	112.1	112.5	112.3	111.4	0.3	(0.1)	0.1	0.9
9.1	Audio Visual, Photographic & Information Processing Equipment	2.10	109.5	109.1	109.8	110.3	109.4	0.4	(0.3)	(0.7)	0.1
9.2	Other Recreational Items & Equipments	0.30	119.8	119.8	119.5	119.0	118.2	0.0	0.3	0.7	1.4
9.3	Recreational & Cultural Services	0.31	122.2	122.2	122.2	117.4	117.2	0.0	0.0	4.1	4.3
9.4	Newspapers, Books & Stationary	0.11	119.5	119.4	118.2	117.8	115.9	0.1	1.1	1.5	3.2
10	Education	4.60	120.3	120.3	120.3	120.3	118.6	0.0	0.0	0.0	1.5
10.1	Pre-Primary & Primary Education	1.89	124.7	124.7	124.7	124.6	122.3	0.0	0.0	0.1	1.9
10.2	Secondary & Tertiary Education	2.70	117.2	117.2	117.2	117.2	115.9	0.0	0.0	0.0	1.1
11	Restaurants & Hotels	3.66	126.1	125.7	125.0	124.4	122.3	0.4	0.9	1.4	3.2
11.1	Restaurants, Cafes & the Like	3.02	130.3	129.7	128.9	128.3	125.8	0.4	1.1	1.5	3.6
11.2	Accommodation Services	0.64	106.6	106.7	106.6	106.2	105.7	(0.1)	0.0	0.4	0.8
12	Miscellaneous Goods & Services	9.01	145.2	145.2	144.6	136.2	134.8	0.0	0.4	6.6	7.7
12.1	Personal Care	2.33	133.7	133.7	132.2	130.6	127.0	0.1	1.2	2.4	5.3
12.2	Personal Effects Not Elsewhere Classified	0.22	106.2	106.1	106.8	106.5	106.1	0.2	(0.5)	(0.2)	0.1
12.3	Social Protection	0.13	123.2	123.2	123.2	123.2	120.4	0.0	0.0	0.0	2.4
12.4	Insurance	3.62	169.2	169.3	169.2	151.0	150.9	(0.0)	0.0	12.1	12.2
12.5	Financial Services	1.09	126.9	126.8	126.6	125.4	124.1	0.1	0.3	1.2	2.2
12.6	Taxes, Licences & Fees	1.61	127.3	127.2	126.6	123.5	122.0	0.1	0.5	3.0	4.4
	All-Items Index	100.0	133.9	134.8	134.2	132.0	131.9	(0.7)	(0.3)	1.4	1.5

Note: Figures may vary slightly due to the rounding off

TABLE 4: Consumer Price Index By Tradeability (December 2018 = 100.0)

	All Items		Non-Tradable		Domestic Tradable		Imported Tradable		All Tradable	
	Index	Inflation	Index	Inflation	Index	Inflation	Index	Inflation	Index	Inflation
Weights	100.00		42.29		15.46		42.26		57.71	
2022										
Jan	116.0	10.6	113.1	5.6	115.6	5.2	119.1	17.9	118.2	14.3
Feb	116.3	10.6	113.2	5.7	115.9	4.9	119.7	18.0	118.7	14.3
Mar	116.6	10.0	113.3	5.8	116.2	4.9	120.1	16.3	119.1	13.1
Apr	120.1	9.6	116.5	6.1	117.9	3.7	124.6	15.5	122.8	12.2
May	123.2	11.9	116.8	6.1	119.2	4.6	131.0	20.3	127.9	16.0
Jun	124.8	12.7	118.7	7.1	122.4	7.3	131.9	20.3	129.4	16.8
Jul	127.7	14.3	119.0	7.3	124.8	9.9	137.6	23.0	134.2	19.4
Aug	128.1	14.6	119.0	7.3	125.6	10.4	138.2	23.4	134.8	19.9
Sept	127.8	13.8	119.2	7.0	126.8	10.8	136.8	21.6	134.2	18.7
Oct	128.1	13.1	119.1	6.8	127.9	11.5	137.2	19.7	134.8	17.5
Nov	127.1	12.2	119.2	6.9	128.3	11.7	134.5	17.4	132.8	15.9
Dec	127.6	12.4	119.4	6.7	129.4	12.4	135.2	18.0	133.6	16.5
2023										
Jan	126.8	9.3	119.8	6.0	130.6	13.0	132.4	11.1	131.9	11.6
Feb	126.9	9.1	119.9	5.9	131.1	13.2	132.4	10.6	132.0	11.2
Mar	128.2	9.9	120.1	6.0	131.8	13.4	135.0	12.4	134.2	12.7
Apr	129.7	7.9	121.8	4.6	133.3	13.1	136.2	9.3	135.4	10.3
May	130.2	5.7	122.1	4.6	134.1	12.5	136.9	4.5	136.2	6.5
Jun	130.5	4.6	122.4	3.1	134.6	10.0	137.2	4.0	136.5	5.5
Jul	129.7	1.5	122.5	3.0	134.7	7.9	134.9	-1.9	134.9	0.5
Aug	129.7	1.2	122.6	3.0	134.7	7.2	135.0	-2.3	135.0	0.1
Sep	131.9	3.2	122.7	3.0	134.6	6.2	140.0	2.3	138.6	3.3
Oct	132.0	3.1	122.8	3.1	134.8	5.4	140.1	2.1	138.8	3.0
Nov	132.0	3.9	122.9	3.1	135.4	5.6	139.8	3.9	138.6	4.4
Dec	132.1	3.5	123.0	3.0	135.6	4.8	139.9	3.5	138.8	3.9
2024										
Jan	131.8	3.9	123.1	2.8	136.5	4.5	138.6	4.7	138.1	4.7
Feb	131.9	3.9	123.2	2.8	137.1	4.6	138.6	4.7	138.2	4.7
Mar	132.0	2.9	123.4	2.8	137.4	4.3	138.5	2.6	138.2	3.0
Apr	133.7	3.1	125.2	2.7	138.2	3.7	140.6	3.3	140.0	3.4
May	134.2	3.0	125.4	2.6	138.7	3.4	141.3	3.2	140.6	3.3
Jun	134.2	2.8	125.5	2.6	139.1	3.4	141.2	2.9	140.7	3.0
Jul	134.5	3.7	125.6	2.5	139.7	3.7	141.5	4.9	141.1	4.6
Aug	134.8	3.9	125.7	2.5	140.2	4.1	142.0	5.2	141.6	4.9
Sep	133.9	1.5	125.7	2.4	140.4	4.3	139.7	-0.2	139.9	0.9
% Change on last month	(0.7)		0.0		0.2		(1.6)		(1.2)	

Note: Figures may vary slightly due to the rounding off

TABLE 5: Core Inflation Rates By Exclusion And Trimmed Mean

Year	Month	Consumer Price Index (Trimmed Mean) (December 2018 = 100)	Core Monthly Inflation Rate (Trimmed Mean) (percentage)	Consumer Price Index (Excluding Administered Prices) (December 2018 = 100)	Core Monthly Inflation (Excluding Administered Prices) (percentage)
2022					
	Jan	116.2	8.8	113.8	6.7
	Feb	116.6	8.8	114.4	6.8
	Mar	116.9	8.6	114.8	6.8
	Apr	119.9	8.1	116.5	5.9
	May	121.9	9.4	118.0	6.4
	Jun	123.7	10.3	119.0	6.6
	Jul	125.8	11.5	120.4	7.6
	Aug	126.1	11.8	121.1	8.0
	Sept	126.0	11.4	121.7	8.0
	Oct	126.3	11.1	122.2	8.0
	Nov	125.9	10.8	122.6	8.3
	Dec	126.5	11.2	123.3	8.7
2023					
	Jan	127.0	8.5	124.2	9.1
	Feb	127.0	8.2	124.3	8.7
	Mar	128.5	9.2	125.1	8.9
	Apr	128.9	7.1	126.2	8.3
	May	126.0	5.4	127.0	7.7
	Jun	126.7	4.3	127.5	7.1
	Jul	126.3	2.5	127.6	5.9
	Aug	126.4	2.4	127.7	5.5
	Sep	127.4	3.3	128.1	5.2
	Oct	128.5	3.2	128.2	4.9
	Nov	132.0	3.7	128.6	4.9
	Dec	131.8	3.3	128.8	4.4
2024					
	Jan	132.9	3.7	129.3	4.1
	Feb	132.4	3.7	129.5	4.1
	Mar	132.4	2.6	129.7	3.7
	Apr	132.0	2.9	130.1	3.1
	May	132.8	2.8	130.8	3.0
	Jun	132.9	2.6	130.9	2.7
	Jul	133.4	3.5	131.3	2.9
	Aug	133.8	3.7	131.8	3.2
	Sep	130.3	1.5	132.0	3.1

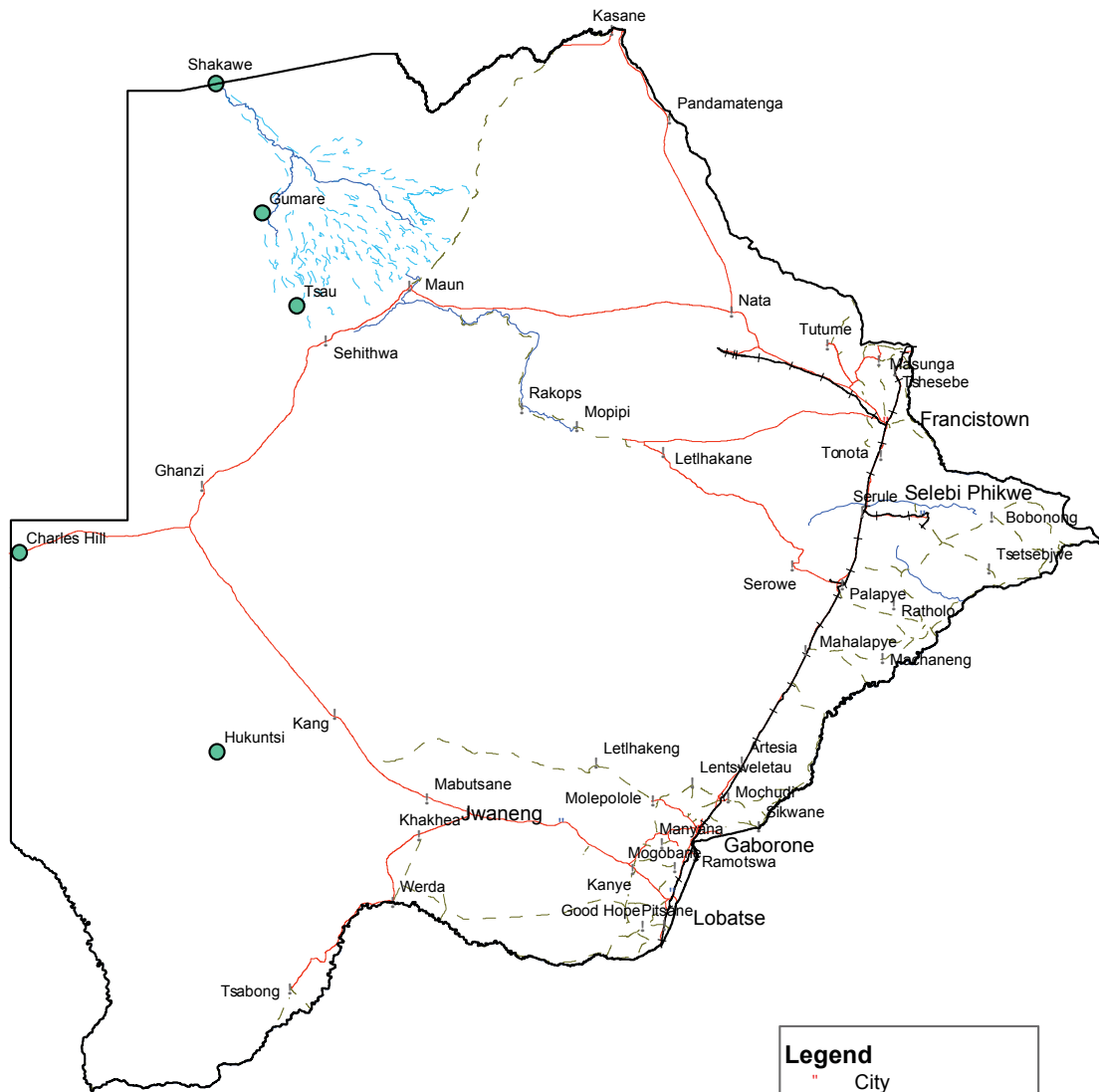
Note: Figures may vary slightly due to the rounding off

TABLE 6: Average Annual Inflation (December 2018=100)

	Group	Weights	2013	2014	2015	2016	2017	2018	2019	2020	2021	2022	2023
1	Food & Non-Alcoholic Beverages	13.55	5.4	3.0	1.3	2.7	3.4	(0.5)	1.4	3.7	6.0	11.1	11.9
2	Alcoholic Beverages & Tobacco	4.34	10.3	9.0	6.1	2.5	4.5	1.1	2.8	5.4	8.9	5.3	4.6
3	Clothing & Footwear	5.95	6.3	6.0	7.6	6.5	3.2	1.8	1.3	2.2	3.5	4.4	5.7
4	Housing, Water, Electr. Gas & Other Fuels	17.45	4.3	3.9	7.1	6.3	5.4	4.1	2.1	5.1	7.7	6.6	2.1
5	Furnishing, H/H Equipment & Routine Maintenance	4.85	4.9	5.0	6.1	3.0	3.3	2.1	2.1	2.4	3.7	5.5	5.9
6	Health	3.38	5.5	8.3	6.3	3.0	2.4	1.1	1.0	1.3	2.7	2.7	2.9
7	Transport	23.43	7.3	1.2	(5.1)	(2.7)	1.6	7.5	6.2	(2.4)	12.3	31.1	4.2
8	Communication	6.94	0.3	0.3	0.3	0.2	0.5	(4.6)	(3.8)	0.5	1.3	1.3	1.9
9	Recreation & Culture	2.82	4.5	4.2	5.7	3.0	2.2	1.8	0.4	(0.2)	3.5	4.2	2.5
10	Education	4.60	4.7	7.4	6.4	3.7	4.1	5.5	3.1	4.7	2.2	2.2	5.2
11	Restaurants & Hotels	3.66	7.9	7.6	5.5	4.0	3.7	3.4	2.5	3.2	3.1	5.2	6.2
12	Miscellaneous Goods & Services	9.01	1.2	5.2	7.2	7.5	3.9	6.4	5.3	2.0	5.4	8.8	8.7
	All-Items Index	100.0	5.9	4.4	3.1	2.8	3.3	3.2	2.8	1.9	6.7	12.1	5.2

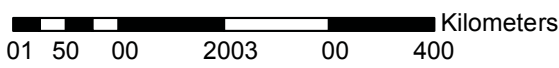
Note: Figures may vary slightly due to the rounding off

CPI Area Coverage



Legend

- City
- Towns
- ! Major Villages
- Rivers
- Main Roads
- - - Secondary Roads
- +— Railway
- - - Swamp



Compiled and Prepared by Statistics Botswana, 2016

Glossary

Consumer Price Index (CPI) is an index which measures price changes in goods and services with reference to a base period.

Inflation is a measurement of prices movement of goods and services in a particular country.

Contributions: These are percentage points that add up to the overall inflation rate. The contribution of a **group** to overall annual inflation depends on its weight in the consumption basket and its own annual inflation rate.

Domestic Tradeables refers to the goods and services which a country (Botswana) can export to other countries.

Imported Tradeables represents the goods and services which a country (Botswana) imports from other countries (trading partners).

Non-Tradeables refers to the goods and services which a country cannot either export to or import from other countries.

All –Tradeables refers to the total of **Domestic** and **Imported Tradeables**.

Trimmed Mean Core Inflation- attempts to remove 8 percent (by weight) of the commodity sub-groups price changes at each of the ends of an ordered series of price changes in any given month.

Core inflation by Exclusion is a measure used to remove the volatility inherent in prices that are only adjusted periodically and not always in response to currently prevailing market forces.





Private Bag 47
Maun
Tel: 371 5716

Private Bag F193,
Francistown
Tel: 241 5848

Private Bag 0024, Gaborone
Tel: 3671300
Toll Free: 0800 600 200

E-mail: info@statsbots.org.bw
Website: <http://www.statsbots.org.bw>



STATISTICS BOTSWANA