



CONSUMER PRICE INDEX JANUARY 2025

CONTACT STATISTICIAN:

Rejoyce L Mbalekelwa

Tel: 3671300/3671319

Private Bag 0024, Gaborone

Tel: 3671300

Toll Free: 0800 600 200

E-mail: info@statsbots.org.bw

Website: www.statsbots.org.bw



STATISTICS BOTSWANA

PREFACE

This report provides an in-depth analysis of Botswana's monthly inflation rate, as measured by the Consumer Price Index (CPI). The CPI serves as a fundamental economic indicator, essential for tracking fluctuations in the cost of living, and offers a comprehensive overview of price movements across the national economy. The report systematically examines both month-on-month and year-on-year changes in the CPI, thereby offering critical insights into the inflationary trends within the country. This analysis is undertaken by Statistics Botswana, whose objective is to furnish a thorough understanding of the inflationary forces at play.

Precise and timely price data is indispensable for the formulation of socio-economic and monetary policies. By equipping policymakers with a clear understanding of prevailing inflationary pressures, such data plays a pivotal role in guiding the development of appropriate policy interventions. Statistics Botswana recognises the importance of this information and, as such, compiles and publishes the Consumer Price Index on a monthly basis to address the informational needs of a wide array of stakeholders.

In January 2025, Botswana recorded an annual inflation rate of 2.5 percent, an increase of 0.8 of a percentage point from the December 2024 rate of 1.7 percent.

Statistics Botswana expresses its sincere gratitude to all stakeholders whose invaluable contributions and data have significantly enhanced the compilation of this publication.

For more information and further enquiries, contact the Directorate of Stakeholder Relations at **+267 367 1300**. This publication and all other Statistics Botswana outputs/publications are available on the website at <http://www.statsbots.org.bw> and at the Statistics Botswana Information Resource Centre (Head-Office, Gaborone).



Dr Lucky Mokgatlhe
Acting Statistician General
14th February 2025

CONTENTS

Preface	i
Section 1: Headline Inflation	1
Section 2: Core Inflation	2
Glossary	13

CHARTS

Chart 1: National Rate Of Inflation	2
Chart 2: Monthly Changes In The Consumer Price Index	2
Chart 3: Non-Tradeables Inflation Rate	2
Chart 4: Tradeables Inflation Rate	2
Chart 5: Contribution Of Groups To Annual Inflation Rate	3

TABLES

Table 1: Contribution Of Groups To Annual Inflation Rate	4
Table 2: Consumer Price Index (December 2018 =100.0)	5
Table 3: National Consumer Price Group & Section Indices (December 2018 = 100.0)	7
Table 4: Consumer Price Index By Tradeability (December 2018 = 100.0)	9
Table 5: Core Inflation Rates By Exclusion And Trimmed Mean	10
Table 6: Average Annual Inflation (December 2018 = 100.0)	11

CONSUMER PRICE INDEX

SECTION 1: HEADLINE INFLATION

In January 2025, Botswana's annual inflation rate was 2.5 percent, an increase of 0.8 of a percentage point from the December 2024 rate of 1.7 percent. The primary drivers of the annual inflation rate in January were the Food & Non-Alcoholic Beverages and Miscellaneous Goods & Services groups, each contributing 0.7 of a percentage point. **Refer to Table 1 and Chart 5.**

Between December and January 2024, inflation rates displayed variation across regions. In Rural Villages, the inflation rate went up by 1.0 percentage point, from 2.0 percent in December 2024 to 3.0 percent in January 2025. The Urban Villages inflation was 2.5 percent in January 2025, an increase of 0.8 of a percentage point from the 1.7 percent recorded in December 2024. Meanwhile, Cities and Towns inflation rate rose by 0.6 of a percentage point, from 1.5 percent in December 2024 to 2.1 percent in January 2025. **Refer to Table 2**

The national Consumer Price Index (CPI) rose by 0.5 percent, from 134.4 in December to 135.0 in January 2025. The Cities & Towns index was 134.7 in January 2025, an increase of 0.5 percent in the December 2024 index of 134.1. The Urban Villages index went up by 0.4 percent, from 134.4 in December 2024 to 135.0 in January 2025. The Rural Villages index also rose by 0.4 percent, from 134.8 in December 2024 to 135.4 in January 2025. **See Table 2.**

The group indices were generally moving at a stable pace between December 2024 and January 2025, recording changes of less than 1.0 percent, except for the Education group which rose by 2.5 percent. **Refer to Table 2.**

Education group index rose by 2.5 percent from 120.3 in December 2024 to 123.4 in January 2025. The increase was attributed by the rise in the constituent section indices of Pre-primary & Primary Education (3.2 percent) and Secondary & Tertiary Education (2.1 percent). **Refer to Table 3.**

The Alcoholic Beverages & Tobacco index rose by 0.9 percent, from 141.1 in December 2024 to 142.3 in January 2025, largely attributed to a 1.0 percent increase in the Alcoholic Beverages section index. **See Table 3.**

The Food & Non-Alcoholic Beverages index increased by 0.8 percent, from 148.6 in December 2024 to 149.8 in January 2025. This growth was driven by increases in all constituent section indices, most notably Fruits (1.9 percent), Coffee, Tea & Cocoa (1.8 percent), Sugar, Jam, Honey, Chocolate & Confectionery (1.0 percent), Meat (Fresh, Chilled & Frozen) (0.9 percent), and Bread & Cereals (0.8 percent). **Refer to Table 3.**

In January 2025, the All-Tradeables index went up by 0.6 percent, from 140.5 in December 2024 to 141.3 in January 2025. The Domestic Tradeables Index realised an increase of 0.9 percent, from 141.5 to 142.8, while the Imported Tradeables Index rose by 0.5 percent, from 140.1 in December 2024 to 140.8 in January 2025. The Non-Tradeables Index grew by 0.2 percent, from 126.0 in December 2024 to 126.3 in January 2025. **See Table 4.**

The All-Tradeables inflation rate was 2.4 percent in January 2025, up by 1.2 percentage points from the December 2024 rate of 1.2 percent. The Imported Tradeables inflation rate rose to 1.6 percent in January 2025, an increase of 1.5 percentage points from the December 2024 rate of 0.1 percent. The Domestic Tradeables inflation rate was 4.6 percent in January 2025, an increase of 0.3 of a percentage point from 4.3 percent recorded in December 2024. The Non-Tradeables inflation rate went up by 0.1 of a percentage point, from 2.4 percent in December 2024 to 2.5 percent in January 2025. **Refer to Table 4.**

SECTION 2: CORE INFLATION

The Trimmed Mean Core inflation rate rose by 0.5 of a percentage point, from 1.7 percent in December 2024 to 2.2 percent in January 2025. The Core Inflation rate, excluding administered prices, was 3.5 percent in January 2025, an increase of 0.2 of a percentage point from the December 2024 rate of 3.3 percent. **Refer to Table 5.**

CHARTS

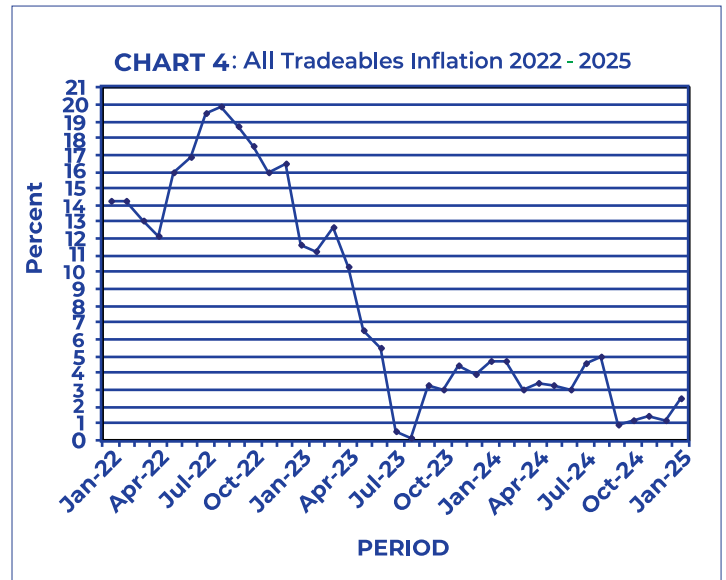
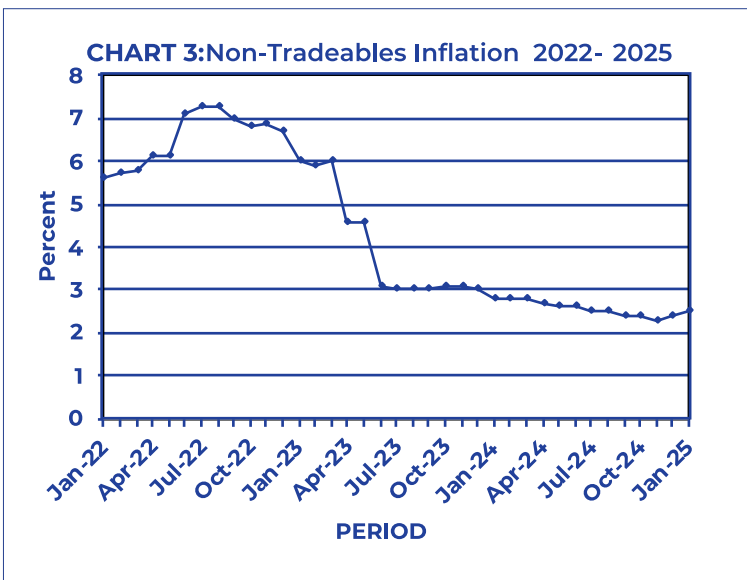
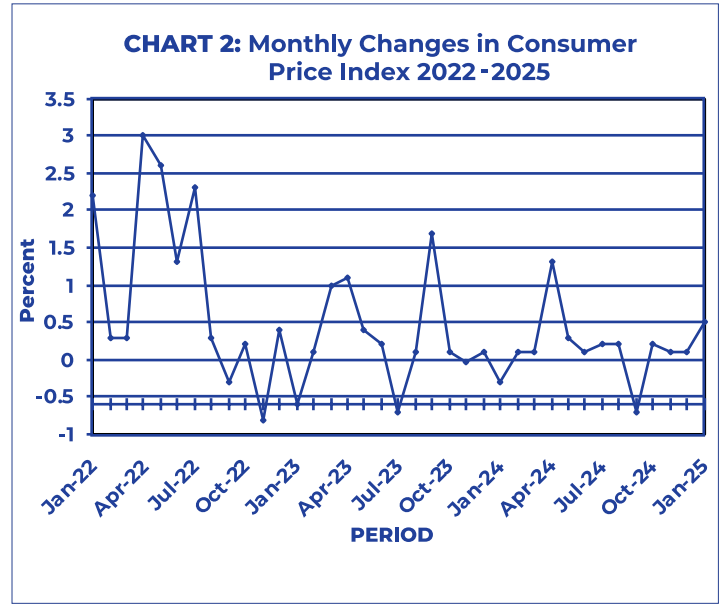
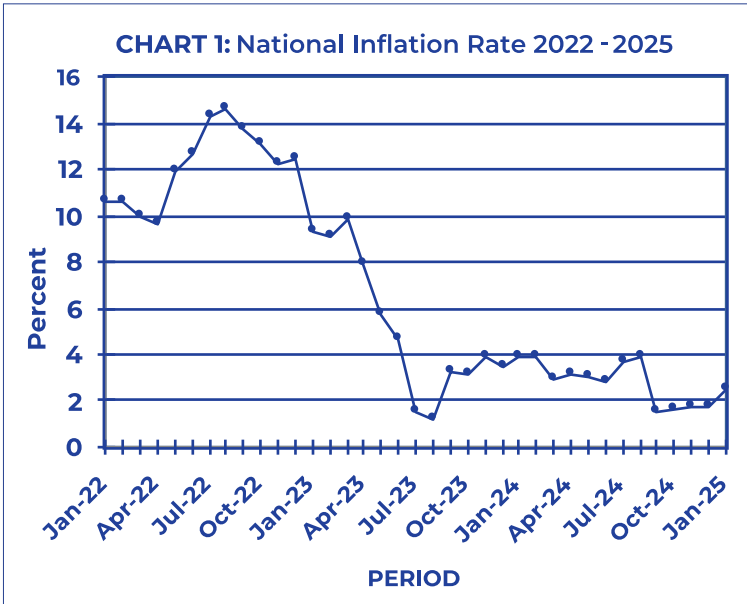
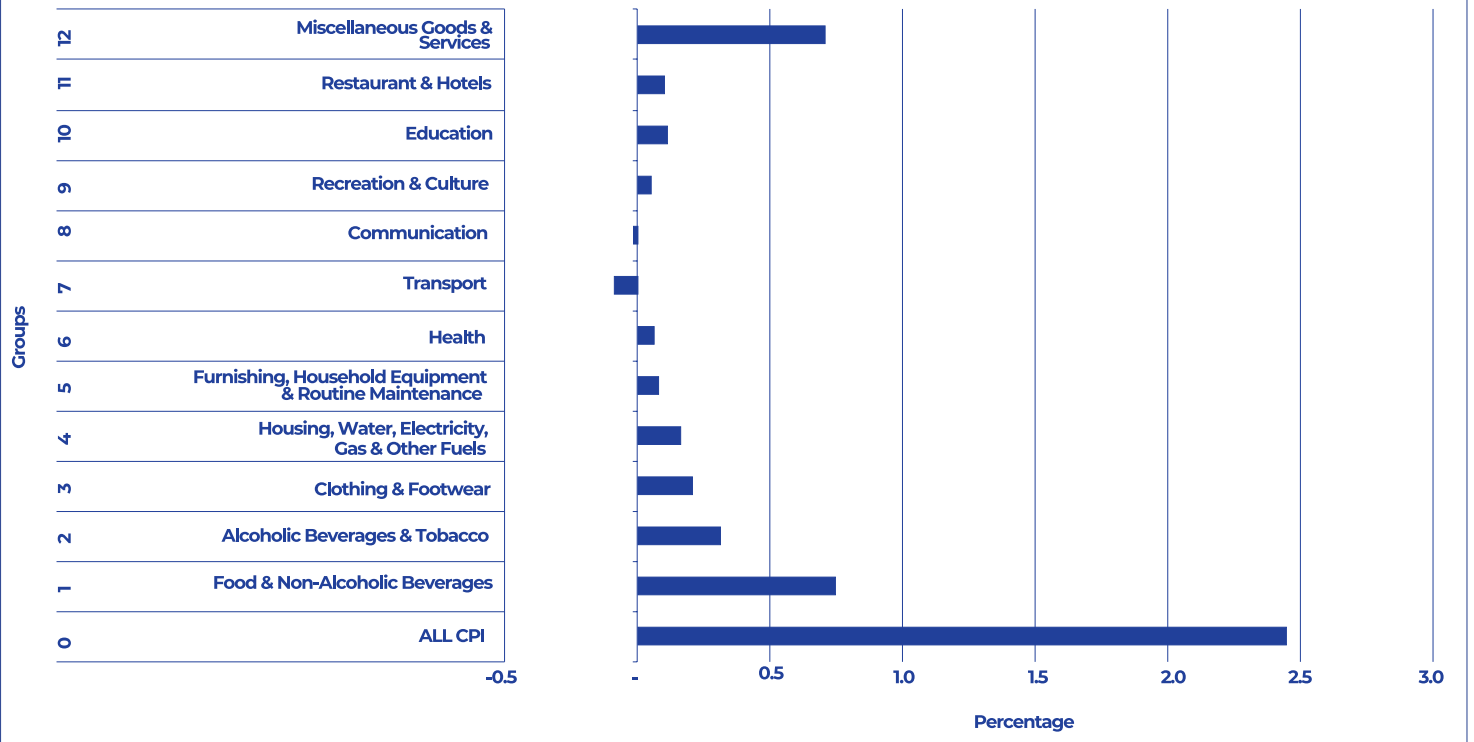


Chart 5: Contribution to Annual Inflation Rate January 2025



TABLES**TABLE 1: Contribution of Groups to Annual Inflation Rate**

GROUP CODE	GROUP NAME	CONTRIBUTION		
		Nov-24	Dec-24	Jan-25
0	All Items Inflation Rate	1.7	1.7	2.5
1	Food & Non-Alcoholic Beverages	0.7	0.7	0.7
2	Alcoholic Beverages & Tobacco	0.3	0.3	0.3
3	Clothing & Footwear	0.2	0.2	0.2
4	Housing, Water, Electricity, Gas & Other Fuels	0.1	0.2	0.2
5	Furnishing, Household Equipment & Routine Maintenance	0.1	0.1	0.1
6	Health	0.1	0.1	0.1
7	Transport	-0.6	-0.7	-0.1
8	Communication	-0.0	-0.0	-0.0
9	Recreation & Culture	0.1	0.1	0.1
10	Education	0.1	0.1	0.1
11	Restaurants & Hotels	0.1	0.1	0.1
12	Miscellaneous Goods & Services	0.7	0.7	0.7

Note: Figures may vary slightly due to the rounding off

TABLE 2 : Consumer Price Index (December 2018 =100.0)

		FOOD	ALCOHOL AND TOBACCO	CLOTHING AND FOOTWEAR	HOUSING	FURNITURE ETC	HEALTH	TRANSPORT	COMMUNICATION	REC. & CULTURE	EDUCATION	REST. & HOTELS	MISCELLANEOUS
	Weights	13.55	4.34	5.95	17.45	4.85	3.38	23.43	6.94	2.82	4.60	3.66	9.01
2022	Jan	114.8	122.1	108.6	117.5	110.6	105.8	126.2	102.3	105.2	112.3	110.4	115.0
	Feb	115.3	122.2	108.7	117.6	110.9	106.0	127.0	102.3	105.4	112.4	110.7	115.4
	Mar	116.0	122.5	109.0	118.0	110.8	106.2	127.2	102.5	105.7	112.5	110.8	115.6
	Apr	118.6	123.2	109.4	122.3	111.6	106.6	134.5	102.5	107.4	112.6	111.5	121.2
	May	121.6	124.0	110.4	122.7	112.7	107.0	144.2	102.6	108.2	112.7	112.9	121.7
	Jun	123.8	124.3	111.2	123.1	113.5	107.3	148.7	102.6	108.4	112.8	113.4	123.0
	Jul	126.4	124.4	111.6	123.5	114.3	107.7	158.1	102.8	108.9	112.8	114.5	123.9
	Aug	128.2	124.4	111.7	123.0	114.6	107.9	158.5	103.9	109.2	112.8	114.9	124.3
	Sept	130.3	124.3	112.5	123.1	115.5	108.0	155.3	104.0	109.1	112.8	115.1	124.5
	Oct	132.0	124.6	113.1	123.0	115.9	108.4	155.4	104.0	109.3	112.8	115.4	124.4
	Nov	132.7	125.0	113.7	122.9	116.3	108.7	150.0	104.8	108.9	112.8	116.3	124.3
	Dec	133.8	124.8	114.0	123.0	116.9	109.1	151.0	104.8	108.8	112.8	116.4	124.8
2023	Jan	134.5	125.1	114.4	123.0	117.5	109.4	145.6	105.0	108.9	118.5	117.1	125.0
	Feb	135.3	125.6	114.8	123.0	118.0	109.5	145.1	105.0	108.9	118.5	117.4	125.3
	Mar	136.6	126.5	115.8	123.3	118.9	109.7	148.9	105.1	108.9	118.5	117.8	125.5
	Apr	138.2	128.7	116.4	124.3	119.8	110.5	149.5	105.1	110.2	118.5	118.9	132.5
	May	139.0	129.8	116.8	124.4	120.1	111.1	150.4	105.2	110.4	118.5	120.1	133.4
	Jun	139.7	130.2	117.4	124.7	119.9	111.1	150.6	105.2	110.5	118.5	120.9	133.7
	Jul	139.9	130.7	117.9	124.6	120.4	110.6	146.1	105.3	110.9	118.5	121.2	134.4
	Aug	139.8	131.1	118.1	124.5	121.0	110.8	146.1	105.3	111.4	118.6	121.8	134.5
	Sep	140.3	131.1	118.7	124.6	121.5	110.5	154.6	105.5	111.4	118.6	122.3	134.8
	Oct	140.6	131.7	119.5	124.4	121.7	110.7	154.4	105.5	111.4	118.6	122.5	135.2
	Nov	141.6	132.2	119.7	124.4	122.3	110.9	153.3	105.6	111.7	118.6	123.0	135.3
	Dec	141.9	132.3	120.1	124.5	122.7	111.2	153.2	105.6	111.9	118.6	123.6	135.4
2024	Jan	142.5	132.8	120.2	124.5	123.5	111.2	150.3	105.8	112.0	120.0	123.9	136.0
	Feb	143.1	133.0	120.6	124.5	123.7	111.4	150.1	105.7	112.1	120.2	124.0	136.1
	Mar	143.5	133.2	120.8	124.9	124.2	111.6	149.9	105.6	112.3	120.3	124.4	136.2
	Apr	144.0	134.8	121.4	124.9	124.0	111.6	153.4	105.6	112.5	120.3	124.7	144.1
	May	144.5	136.4	122.0	124.9	124.0	111.8	154.4	105.5	112.5	120.3	124.8	144.5
	Jun	145.3	136.5	122.8	125.1	124.0	111.9	153.8	105.6	112.5	120.3	125.0	144.6
	Jul	146.1	137.3	122.7	125.3	123.4	112.0	154.2	105.6	112.3	120.3	125.3	145.0
	Aug	146.9	138.0	123.2	125.2	123.9	113.1	154.5	105.6	112.1	120.3	125.7	145.2
	Sep	147.3	138.8	123.7	125.1	124.1	113.3	150.0	105.5	112.4	120.3	126.1	145.2
	Oct	148.0	139.3	124.0	125.3	124.4	113.3	149.8	105.5	113.0	120.3	126.4	145.5
	Nov	148.4	140.0	124.3	125.2	124.6	113.7	149.9	105.5	114.3	120.3	126.9	145.6
	Dec	148.6	141.1	124.5	125.6	125.0	113.6	149.3	105.5	114.4	120.3	127.5	145.6
2025	Jan	149.8	142.3	124.8	125.7	125.7	113.5	149.9	105.5	114.4	123.4	127.7	146.3
% Change on Last month		0.8	0.9	0.2	0.1	0.6	(0.1)	0.4	0.0	0.0	2.5	0.1	0.5

Note: Figures may vary slightly due to the rounding off

TABLE 2: Consumer Price Index (Cont.)

		ALL ITEMS INDEX	NATIONAL INFLATION RATE	MONTHLY CHANGE	TOWNS & CITIES INDEX	URBAN VILLAGE INDEX	RURAL VILLAGES INDEX	ANNUAL INFLATION		
								TOWNS & CITIES	URBAN VILLAGES	RURAL
		100.0	%	%	0.38	0.41	0.21	%	%	%
2022	Jan	116.0	10.6	2.2	116.1	116.2	115.4	10.7	10.4	10.7
	Feb	116.3	10.6	0.3	116.4	116.7	115.6	10.8	10.4	10.6
	Mar	116.6	10.0	0.3	116.6	117.0	115.9	10.1	9.9	9.9
	Apr	120.1	9.6	3.0	120.5	120.4	118.8	9.9	9.4	9.6
	May	123.2	11.9	2.6	123.3	123.6	122.2	11.8	11.8	12.1
	Jun	124.8	12.7	1.3	125.0	125.1	124.0	12.7	12.4	13.1
	Jul	127.7	14.3	2.3	127.7	128.0	127.2	14.3	14.2	14.8
	Aug	128.1	14.6	0.3	128.0	128.5	127.7	14.5	14.5	15.1
	Sept	127.8	13.8	(0.3)	127.6	128.2	127.5	13.6	13.5	14.7
	Oct	128.1	13.1	0.2	128.0	128.4	127.8	12.9	12.8	13.8
	Nov	127.1	12.2	(0.8)	127.0	127.3	127.0	12.1	11.8	13.0
	Dec	127.6	12.4	0.4	127.4	127.8	127.6	12.3	12.2	13.3
2023	Jan	126.8	9.3	(0.6)	126.9	127.1	126.1	9.3	9.4	9.3
	Feb	126.9	9.1	0.1	126.9	127.3	126.1	9.0	9.1	9.1
	Mar	128.2	9.9	1.0	128.2	128.4	127.9	9.9	9.7	10.4
	Apr	129.7	7.9	1.1	129.7	130.0	129.0	7.6	7.9	8.6
	May	130.2	5.7	0.4	130.2	130.5	129.7	5.6	5.6	6.1
	Jun	130.5	4.6	0.2	130.5	130.9	130.0	4.4	4.6	4.8
	Jul	129.7	1.5	(0.7)	129.8	130.0	128.8	1.6	1.5	1.3
	Aug	129.7	1.2	0.1	129.8	130.0	129.0	1.5	1.2	1.0
	Sep	131.9	3.2	1.7	131.8	132.1	131.8	3.3	3.1	3.4
	Oct	132.0	3.1	0.1	132.0	132.1	131.9	3.2	2.9	3.1
	Nov	132.0	3.9	(0.0)	132.0	132.0	132.0	4.0	3.7	3.9
	Dec	132.1	3.5	0.1	132.1	132.1	132.1	3.7	3.4	3.5
2024	Jan	131.8	3.9	(0.3)	131.9	131.8	131.4	4.0	3.7	4.2
	Feb	131.9	3.9	0.1	132.0	131.9	131.5	4.0	3.7	4.3
	Mar	132.0	2.9	0.1	132.1	132.0	131.6	3.1	2.8	2.9
	Apr	133.7	3.1	1.3	133.8	133.9	133.2	3.2	3.0	3.2
	May	134.2	3.0	0.3	134.1	134.4	133.8	3.0	2.9	3.2
	Jun	134.2	2.8	0.1	134.2	134.4	134.0	2.8	2.7	3.1
	Jul	134.5	3.7	0.2	134.5	134.7	134.2	3.6	3.7	4.2
	Aug	134.8	3.9	0.2	134.7	134.9	135.0	3.7	3.8	4.6
	Sep	133.9	1.5	(0.7)	133.8	134.0	134.0	1.5	1.4	1.7
	Oct	134.1	1.6	0.2	133.8	134.2	134.3	1.4	1.6	1.9
	Nov	134.3	1.7	0.1	134.0	134.4	134.7	1.5	1.8	2.1
	Dec	134.4	1.7	0.1	134.1	134.4	134.8	1.5	1.7	2.0
2025	Jan	135.0	2.5	0.5	134.7	135.0	135.4	2.1	2.5	3.0
% Change on last month		0.5			0.5	0.4	0.4			

Note: Figures may vary slightly due to the rounding off

TABLE 3: National Consumer Price Group And Section Indices (December 2018=100.0)

	GROUP SECTION	WEIGHTS	THIS MONTH JAN 2025	LAST MONTH DEC 2024	3 MONTHS AGO OCT 2024	6 MONTHS AGO JUL 2024	12 MONTHS AGO JAN 2024	PERCENTAGE CHANGE ON:			
								LAST MONTH	3 MONTHS AGO	6 MONTHS AGO	12 MONTHS AGO
1	Food & Non-Alcoholic Beverages	13.55	149.8	148.6	148.0	146.1	142.5	0.8	1.2	2.5	5.1
1.1	Bread & Cereals	4.26	162.5	161.2	160.8	159.8	154.0	0.8	1.1	1.7	5.5
1.2	Meat (Fresh, Chilled & Frozen)	2.36	150.3	148.9	147.2	146.3	145.2	0.9	2.1	2.8	3.5
1.3	Fish (Fresh, Chilled & Frozen)	0.18	138.5	138.2	138.2	135.0	134.2	0.2	0.3	2.6	3.2
1.4	Milk, Cheese & Milk Products	0.98	135.9	135.4	135.2	132.3	129.2	0.4	0.6	2.7	5.2
1.5	Oils & Fats	0.92	157.6	157.0	156.5	161.6	168.9	0.4	0.7	(2.5)	(6.7)
1.6	Fruits	0.78	141.0	138.4	127.5	127.6	126.8	1.9	10.6	10.5	11.2
1.7	Vegetables	1.08	152.3	152.2	163.6	152.6	142.9	0.1	(6.9)	(0.2)	6.6
1.8	Sugar, Jam, Honey, Chocolate & Confectionery	1.11	130.2	128.9	125.6	123.8	119.0	1.0	3.7	5.2	9.5
1.9	Food Not Elsewhere Classified	0.54	140.1	139.2	138.7	136.8	134.7	0.6	1.0	2.4	4.0
1.10	Coffee, Tea & Cocoa	0.73	148.8	146.1	144.1	136.8	129.1	1.8	3.2	8.7	15.2
1.11	Mineral Waters, Soft Drinks, Fruits & Vegetables Juices	0.62	125.2	124.8	124.7	123.6	121.8	0.3	0.4	1.3	2.8
2	Alcoholic Beverages & Tobacco	4.34	142.3	141.1	139.3	137.3	132.8	0.9	2.2	3.6	7.1
2.1	Alcoholic Beverages	3.51	145.2	143.8	141.7	139.6	134.5	1.0	2.5	4.1	8.0
2.2	Tobacco	0.82	129.7	129.4	128.8	127.7	125.6	0.2	0.7	1.5	3.2
3	Clothing & Footwear	5.95	124.8	124.5	124.0	122.7	120.2	0.2	0.7	1.7	3.8
3.1	Clothing	2.60	125.3	125.2	124.3	122.7	120.3	0.1	0.8	2.1	4.2
3.2	Other Articles of Clothing	0.72	122.6	122.5	122.6	121.8	119.9	0.1	(0.0)	0.6	2.2
3.3	Cleaning, Repair & Hire	0.61	136.7	136.6	136.3	135.8	130.0	0.1	0.3	0.7	5.2
3.4	Footwear	2.03	121.3	120.7	120.3	118.9	117.3	0.5	0.8	2.0	3.4
4	Housing, Water, Electricity, Gas & Other Fuels	17.45	125.7	125.6	125.3	125.3	124.5	0.1	0.3	0.3	1.0
4.1	Rent Paid by Tenants	7.78	124.5	124.5	123.5	123.9	122.5	0.0	0.8	0.5	1.6
4.2	Materials for Maintenance & Repair of Dwellings	3.83	127.7	127.3	127.8	126.8	125.7	0.3	(0.0)	0.7	1.6
4.3	Water Supply & Miscellaneous Services	1.96	112.7	112.7	112.7	112.7	112.7	0.0	0.0	0.0	0.0
4.4	Electricity, Gas & Other Fuels	3.89	132.7	132.8	132.7	133.0	133.0	(0.1)	(0.0)	(0.3)	(0.2)
5	Furnishing, H/H Equipment & Routine Maintenance	4.85	125.7	125.0	124.4	123.4	123.5	0.6	1.0	1.8	1.8
5.1	Furniture & Furnishing	1.35	119.5	119.0	118.7	118.6	120.8	0.5	0.7	0.8	(1.1)
5.2	Carpets & Other Floor Coverings	0.27	111.5	111.1	112.8	114.8	115.1	0.4	(1.1)	(2.9)	(3.1)
5.3	Household Textiles	0.29	122.4	122.1	121.1	120.0	118.0	0.3	1.1	2.0	3.7
5.4	Household Appliances	0.72	130.7	130.4	129.5	127.9	128.4	0.2	0.9	2.2	1.8
5.5	Glassware, Tableware & Household Utensils	0.23	134.5	134.2	133.0	132.0	131.0	0.3	1.1	1.9	2.7
5.6	Small Tools, Miscellaneous Accessories	0.04	128.1	127.6	127.5	127.8	126.9	0.4	0.5	0.2	1.0
5.7	Goods & Services for Household Maintenance	1.95	129.4	128.4	127.5	125.7	124.6	0.8	1.5	3.0	3.9
6	Health	3.38	113.5	113.6	113.3	112.0	111.2	(0.1)	0.2	1.4	2.1
6.1	Medical Products, Applications & Equipments	0.98	129.0	129.4	128.5	124.5	123.2	(0.3)	0.4	3.6	4.7
6.2	Out-Patient Services	0.93	112.1	112.1	111.7	111.3	109.6	0.1	0.3	0.7	2.3
6.3	Hospital Services	1.47	104.1	104.1	104.1	104.1	104.1	0.0	0.0	0.0	0.0

Note: Figures may vary slightly due to the rounding off

TABLE 3: National Consumer Price Group And Section Indices (December 2018=100.0) (Cont.)

	GROUP SECTION	WEIGHTS	THIS MONTH JAN 2025	LAST MONTH DEC 2024	3 MONTHS AGO OCT 2024	6 MONTHS AGO JUL 2024	12 MONTHS AGO JAN 2024	PERCENTAGE CHANGE ON:			
								LAST MONTH	3 MONTHS AGO	6 MONTHS AGO	12 MONTHS AGO
7	Transport	23.43	149.9	149.3	149.8	154.2	150.3	0.4	0.0	(2.8)	(0.3)
7.1	Purchase of Vehicles	5.74	158.3	156.3	154.7	154.7	152.6	1.3	2.4	2.4	3.8
7.2	Operation of Personal Transport	12.56	148.5	148.4	150.1	158.3	152.0	0.1	(1.1)	(6.2)	(2.3)
7.3	Transport Services	5.13	143.8	143.8	143.8	143.8	143.8	0.0	0.0	0.0	0.0
8	Communication	6.94	105.5	105.5	105.5	105.6	105.8	0.0	0.0	(0.1)	(0.2)
8.1	Postal Services	0.21	127.5	127.5	127.5	127.5	127.5	0.0	0.0	0.0	0.0
8.2	Telephone & Telefax Equipment	1.13	117.4	117.3	117.1	117.8	118.9	0.1	0.2	(0.4)	(1.3)
8.3	Telephone & Telefax Services	5.60	102.3	102.3	102.3	102.3	102.3	0.0	0.0	0.0	0.0
9	Recreation & Culture	2.82	114.4	114.4	113.0	112.3	112.0	0.0	1.3	1.9	2.2
9.1	Audio Visual, Photographic & Information Processing Equipment	2.10	111.9	111.9	110.2	109.5	110.1	(0.1)	1.5	2.1	1.6
9.2	Other Recreational Items & Equipments	0.30	122.2	121.6	120.1	119.5	118.1	0.5	1.7	2.2	3.4
9.3	Recreational & Cultural Services	0.31	122.2	122.2	122.2	122.2	117.4	0.0	0.0	0.0	4.1
9.4	Newspapers, Books & Stationary	0.11	120.9	120.7	120.0	118.5	117.0	0.2	0.8	2.0	3.3
10	Education	4.60	123.4	120.3	120.3	120.3	120.0	2.5	2.5	2.6	2.8
10.1	Pre-Primary & Primary Education	1.89	128.7	124.7	124.7	124.7	124.4	3.2	3.2	3.2	3.5
10.2	Secondary & Tertiary Education	2.70	119.6	117.2	117.2	117.2	117.0	2.1	2.1	2.1	2.2
11	Restaurants & Hotels	3.66	127.7	127.5	126.4	125.3	123.9	0.1	1.0	1.9	3.0
11.1	Restaurants, Cafes & the Like	3.02	132.4	132.2	130.9	129.2	127.7	0.1	1.1	2.4	3.7
11.2	Accommodation Services	0.64	105.5	105.2	105.4	106.6	106.3	0.4	0.2	(1.0)	(0.7)
12	Miscellaneous Goods & Services	9.01	146.3	145.6	145.5	145.0	136.0	0.5	0.5	0.9	7.6
12.1	Personal Care	2.33	136.6	135.4	135.1	132.1	129.7	0.9	1.1	3.5	5.3
12.2	Personal Effects Not Elsewhere Classified	0.22	106.2	106.1	106.3	106.3	106.5	0.1	(0.0)	(0.1)	(0.3)
12.3	Social Protection	0.13	129.4	123.2	123.2	123.2	123.1	5.0	5.0	5.0	5.2
12.4	Insurance	3.62	169.8	169.2	169.3	169.9	151.2	0.3	0.3	(0.0)	12.3
12.5	Financial Services	1.09	126.7	126.7	126.4	126.6	125.4	0.0	0.2	0.1	1.0
12.6	Taxes, Licences & Fees	1.61	127.5	127.4	127.3	127.0	122.9	0.0	0.2	0.4	3.8
	All-Items Index	100.0	135.0	134.4	134.1	134.5	131.8	0.5	0.7	0.3	2.5

Note: Figures may vary slightly due to the rounding off

TABLE 4: Consumer Price Index By Tradeability (December 2018 = 100.0)

	All Items		Non-Tradable		Domestic Tradable		Imported Tradable		All Tradable		
	Index	Inflation	Index	Inflation	Index	Inflation	Index	Inflation	Index	Inflation	
Weights	100.00		42.29		15.46		42.26		57.71		
2022	Jan	116.0	10.6	113.1	5.6	115.6	5.2	119.1	17.9	118.2	14.3
	Feb	116.3	10.6	113.2	5.7	115.9	4.9	119.7	18.0	118.7	14.3
	Mar	116.6	10.0	113.3	5.8	116.2	4.9	120.1	16.3	119.1	13.1
	Apr	120.1	9.6	116.5	6.1	117.9	3.7	124.6	15.5	122.8	12.2
	May	123.2	11.9	116.8	6.1	119.2	4.6	131.0	20.3	127.9	16.0
	Jun	124.8	12.7	118.7	7.1	122.4	7.3	131.9	20.3	129.4	16.8
	Jul	127.7	14.3	119.0	7.3	124.8	9.9	137.6	23.0	134.2	19.4
	Aug	128.1	14.6	119.0	7.3	125.6	10.4	138.2	23.4	134.8	19.9
	Sept	127.8	13.8	119.2	7.0	126.8	10.8	136.8	21.6	134.2	18.7
	Oct	128.1	13.1	119.1	6.8	127.9	11.5	137.2	19.7	134.8	17.5
	Nov	127.1	12.2	119.2	6.9	128.3	11.7	134.5	17.4	132.8	15.9
	Dec	127.6	12.4	119.4	6.7	129.4	12.4	135.2	18.0	133.6	16.5
2023	Jan	126.8	9.3	119.8	6.0	130.6	13.0	132.4	11.1	131.9	11.6
	Feb	126.9	9.1	119.9	5.9	131.1	13.2	132.4	10.6	132.0	11.2
	Mar	128.2	9.9	120.1	6.0	131.8	13.4	135.0	12.4	134.2	12.7
	Apr	129.7	7.9	121.8	4.6	133.3	13.1	136.2	9.3	135.4	10.3
	May	130.2	5.7	122.1	4.6	134.1	12.5	136.9	4.5	136.2	6.5
	Jun	130.5	4.6	122.4	3.1	134.6	10.0	137.2	4.0	136.5	5.5
	Jul	129.7	1.5	122.5	3.0	134.7	7.9	134.9	-1.9	134.9	0.5
	Aug	129.7	1.2	122.6	3.0	134.7	7.2	135.0	-2.3	135.0	0.1
	Sep	131.9	3.2	122.7	3.0	134.6	6.2	140.0	2.3	138.6	3.3
	Oct	132.0	3.1	122.8	3.1	134.8	5.4	140.1	2.1	138.8	3.0
	Nov	132.0	3.9	122.9	3.1	135.4	5.6	139.8	3.9	138.6	4.4
	Dec	132.1	3.5	123.0	3.0	135.6	4.8	139.9	3.5	138.8	3.9
2024	Jan	131.8	3.9	123.1	2.8	136.5	4.5	138.6	4.7	138.1	4.7
	Feb	131.9	3.9	123.2	2.8	137.1	4.6	138.6	4.7	138.2	4.7
	Mar	132.0	2.9	123.4	2.8	137.4	4.3	138.5	2.6	138.2	3.0
	Apr	133.7	3.1	125.2	2.7	138.2	3.7	140.6	3.3	140.0	3.4
	May	134.2	3.0	125.4	2.6	138.7	3.4	141.3	3.2	140.6	3.3
	Jun	134.2	2.8	125.5	2.6	139.1	3.4	141.2	2.9	140.7	3.0
	Jul	134.5	3.7	125.6	2.5	139.7	3.7	141.5	4.9	141.1	4.6
	Aug	134.8	3.9	125.7	2.5	140.2	4.1	142.0	5.2	141.6	4.9
	Sep	133.9	1.5	125.7	2.4	140.4	4.3	139.7	-0.2	139.9	0.9
	Oct	134.1	1.6	125.7	2.4	140.9	4.5	140.0	-0.1	140.2	1.1
	Nov	134.3	1.7	125.7	2.3	141.2	4.3	140.3	0.4	140.6	1.4
	Dec	134.4	1.7	126.0	2.4	141.5	4.3	140.1	0.1	140.5	1.2
2025	Jan	135.0	2.5	126.3	2.5	142.8	4.6	140.8	1.6	141.3	2.4

Note: Figures may vary slightly due to the rounding off

TABLE 5: Core Inflation Rates By Exclusion And Trimmed Mean

Year	Month	Consumer Price Index (Trimmed Mean) (December 2018 = 100)	Core Monthly Inflation Rate (Trimmed Mean) (percentage)	Consumer Price Index (Excluding Administered Prices) (December 2018 = 100)	Core Monthly Inflation (Excluding Administered Prices) (percentage)
2022					
	Jan	116.2	8.8	113.8	6.7
	Feb	116.6	8.8	114.4	6.8
	Mar	116.9	8.6	114.8	6.8
	Apr	119.9	8.1	116.5	5.9
	May	121.9	9.4	118.0	6.4
	Jun	123.7	10.3	119.0	6.6
	Jul	125.8	11.5	120.4	7.6
	Aug	126.1	11.8	121.1	8.0
	Sept	126.0	11.4	121.7	8.0
	Oct	126.3	11.1	122.2	8.0
	Nov	125.9	10.8	122.6	8.3
	Dec	126.5	11.2	123.3	8.7
2023					
	Jan	127.0	8.5	124.2	9.1
	Feb	127.0	8.2	124.3	8.7
	Mar	128.5	9.2	125.1	8.9
	Apr	128.9	7.1	126.2	8.3
	May	126.0	5.4	127.0	7.7
	Jun	126.7	4.3	127.5	7.1
	Jul	126.3	2.5	127.6	5.9
	Aug	126.4	2.4	127.7	5.5
	Sep	127.4	3.3	128.1	5.2
	Oct	128.5	3.2	128.2	4.9
	Nov	132.0	3.7	128.6	4.9
	Dec	131.8	3.3	128.8	4.4
2024					
	Jan	132.9	3.7	129.3	4.1
	Feb	132.4	3.7	129.5	4.1
	Mar	132.4	2.6	129.7	3.7
	Apr	132.0	2.9	130.1	3.1
	May	132.8	2.8	130.8	3.0
	Jun	132.9	2.6	130.9	2.7
	Jul	133.4	3.5	131.3	2.9
	Aug	133.8	3.7	131.8	3.2
	Sep	130.3	1.5	132.0	3.1
	Oct	130.5	1.6	132.3	3.2
	Nov	130.7	1.7	132.6	3.1
	Dec	131.2	1.7	133.0	3.3
2025					
	Jan	131.9	2.2	133.9	3.5

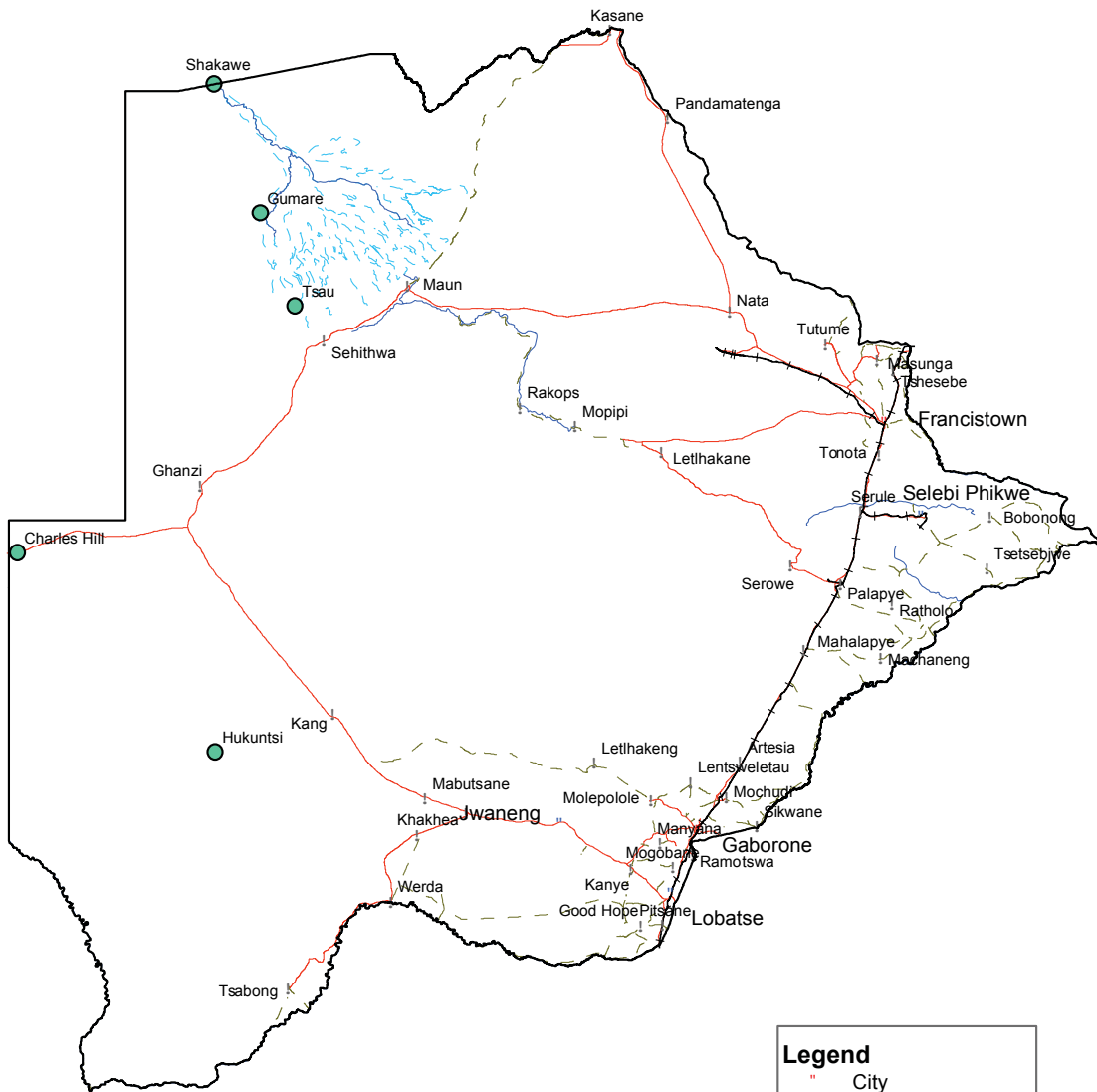
Note: Figures may vary slightly due to the rounding off

TABLE 6: Average Annual Inflation (December 2018=100)

	Group	Weights	2014	2015	2016	2017	2018	2019	2020	2021	2022	2023	2024
1	Food & Non-Alcoholic Beverages	13.55	3.0	1.3	2.7	3.4	(0.5)	1.4	3.7	6.0	11.1	11.9	4.8
2	Alcoholic Beverages & Tobacco	4.34	9.0	6.1	2.5	4.5	1.1	2.8	5.4	8.9	5.3	4.6	5.6
3	Clothing & Footwear	5.95	6.0	7.6	6.5	3.2	1.8	1.3	2.2	3.5	4.4	5.7	4.3
4	Housing, Water, Electr. Gas & Other Fuels	17.45	3.9	7.1	6.3	5.4	4.1	2.1	5.1	7.7	6.6	2.1	0.7
5	Furnishing, H/H Equipment & Routine Maintenance	4.85	5.0	6.1	3.0	3.3	2.1	2.1	2.4	3.7	5.5	5.9	3.1
6	Health	3.38	8.3	6.3	3.0	2.4	1.1	1.0	1.3	2.7	2.7	2.9	1.7
7	Transport	23.43	1.2	(5.1)	(2.7)	1.6	7.5	6.2	(2.4)	12.3	31.1	4.2	1.3
8	Communication	6.94	0.3	0.3	0.2	0.5	(4.6)	(3.8)	0.5	1.3	1.3	1.9	0.3
9	Recreation & Culture	2.82	4.2	5.7	3.0	2.2	1.8	0.4	(0.2)	3.5	4.2	2.5	2.0
10	Education	4.60	7.4	6.4	3.7	4.1	5.5	3.1	4.7	2.2	2.2	5.2	1.5
11	Restaurants & Hotels	3.66	7.6	5.5	4.0	3.7	3.4	2.5	3.2	3.1	5.2	6.2	4.0
12	Miscellaneous Goods & Services	9.01	5.2	7.2	7.5	3.9	6.4	5.3	2.0	5.4	8.8	8.7	8.1
	All-Items Index	100.0	4.4	3.1	2.8	3.3	3.2	2.8	1.9	6.7	12.1	5.2	2.8

Note: Figures may vary slightly due to the rounding off

CPI Area Coverage



01 50 00 2003 00 400 Kilometers

Legend

- City
- Towns
- ! Major Villages
- Rivers
- Main Roads
- - - Secondary Roads
- +— Railway
- - - Swamp

GLOSSARY

Consumer Price Index (CPI) is an index which measures price changes in goods and services with reference to a base period.

Inflation is a measurement of prices movement of goods and services in a particular country.

Contributions: These are percentage points that add up to the overall inflation rate. The contribution of a **group** to overall annual inflation depends on its weight in the consumption basket and its own annual inflation rate.

Domestic Tradeables refers to the goods and services which a country (Botswana) can export to other countries.

Imported Tradeables represents the goods and services which a country (Botswana) imports from other countries (trading partners).

Non-Tradeables refers to the goods and services which a country cannot either export to or import from other countries.

All -Tradeables refers to the total of **Domestic** and **Imported Tradeables**.

Trimmed Mean Core Inflation- attempts to remove 8 percent (by weight) of the commodity sub-groups price changes at each of the ends of an ordered series of price changes in any given month.

Core inflation by Exclusion is a measure used to remove the volatility inherent in prices that are only adjusted periodically and not always in response to currently prevailing market forces.





Private Bag 47
Maun
Tel: 371 5716

Private Bag F193,
Francistown
Tel: 241 5848

Private Bag 0024, Gaborone
Tel: 3671300
Toll Free: 0800 600 200

E-mail: info@statsbots.org.bw
Website: <http://www.statsbots.org.bw>



STATISTICS BOTSWANA