

# **TOURISM STATISTICS 2008**

**Published By**

**Central Statistics Office**  
**Private Bag 0024, Gaborone**  
**Website: [www.cso.gov.bw/cso](http://www.cso.gov.bw/cso)**  
**E-mail: [csobots@gov.bw](mailto:csobots@gov.bw)**

**Contact: Demography Unit**  
**Contact Statistician**  
**Tel: (267) 3671300/ (267)3190718**  
**Fax: (267) 3952201**

**Printed by and obtainable from**  
**Department of Printing and Publishing Services,**  
**Private Bag 0081**  
**Gaborone**  
**Tel: (267) 3953202, Fax: (267) 3959392**

**March 2010**

**COPYRIGHT RESERVED**

**Extracts may be published if source  
is duly acknowledged**

## PREFACE

This publication is the fifteenth in the series of Tourism Statistics. It is an annual publication of the Central Statistics Office (CSO). The information contained in this publication is compiled from the completed Immigration Arrival/Departure forms.

Travelers leaving and entering Botswana are required to complete arrival and departure forms at all gazetted points of entry/departure. In case of those immigration posts handling heavy passenger traffic, recording more than 400 arrivals/departures a month, a ten percent sample of forms is selected for analysis and the resulting figures are grossed up accordingly. Forms from borders with low passenger traffic are not sampled but a 100 percent analysis is done. However, Botswana citizens are not required to complete immigration forms. The figures on arrivals and departures contained in this publication therefore cover only non-citizens, both visitors and temporary residents of Botswana.

I wish to acknowledge all those who participated in the production of the report, in particular the Department of Tourism for providing manpower during data entry. This publication is a result of cooperative efforts by the Immigration Department, the Department of Tourism and the Demography Unit of the CSO.

Users who require more information can contact the Demography Unit of CSO at the address on the copyright page.



.....  
A. N. Majelantle  
GOVERNMENT STATISTICIAN

## TABLE OF CONTENTS

1.0 INTRODUCTION .....	1
2.0 ARRANGEMENT OF TABLES.....	1
3.0 TOTAL ARRIVALS .....	1
3.1 ARRIVALS BY COUNTRY OF RESIDENCE.....	2
3.3 DISTRIBUTION OF ARRIVALS BY SEX AND AGE GROUP.....	3
3.4 ARRIVALS BY BORDER POST .....	3
3.5 MONTH OF ARRIVAL.....	4
3.6 MODE OF TRAVEL .....	4
4.0 TOTAL DEPARTURES .....	5
4.1 DEPARTURES BY COUNTRY OF RESIDENCE.....	5
4.2 DEPARTURES BY SEX AND AGE.....	5
4.3 DISTRIBUTION BY MONTH, MODE OF TRAVEL AND BORDER .....	6
TABLE 1: TOTAL ARRIVALS BY COUNTRY OF RESIDENCE AND SEX - 2008 .....	7
TABLE 2: TOTAL ARRIVALS BY PURPOSE OF ENTRY AND SEX - 2008.....	9
TABLE 3 : TOTAL ARRIVALS BY PURPOSE OF ENTRY AND AGE GROUP - 2008.....	10
TABLE 4: TOTAL ARRIVALS BY COUNTRY OF RESIDENCE AND PURPOSE OF ENTRY - 2008.....	10
TABLE 5: TOTAL ARRIVALS BY COUNTRY OF RESIDENCE AND MONTH OF ARRIVAL - 2008 .....	14
TABLE 6: TOTAL ARRIVALS BY COUNTRY OF RESIDENCE AND BORDER POST - 2008 .....	17
TABLE 7: ARRIVALS BY BORDER POST AND MONTH OF ARRIVALS - 2008 .....	29
TABLE 8: TOTAL ARRIVALS BY MONTH OF ARRIVALS AND MODE OF TRAVEL - 2008 .....	31
TABLE 9: TOTAL ARRIVALS BY AGE GROUP AND SEX - 2008.....	31
TABLE 10: TOTAL ARRIVALS BY COUNTRY OF RESIDENCE AND AGE GROUP - 2008.....	32
TABLE 11: TOTAL ARRIVALS BY NATIONALITY AND AGE GROUP - 2008 .....	37
TABLE 12: TOTAL ARRIVALS BY BORDER POST AND PURPOSE OF ENTRY - 2008 .....	40
TABLE 13: TOTAL ARRIVALS BY MONTH AND PURPOSE OF ENTRY - 2008.....	42
TABLE14: TOTAL ARRIVALS BY NATIONALITY AND PURPOSE OF ENTRY .....	44
TABLE 15: TOTAL ARRIVALS BY MONTH AND QUARTER FOR YEARS 1998 - 2008 .....	47
TABLE 16: TOTAL DEPARTURES BY COUNTRY OF RESIDENCE AND SEX - 2008.....	48
TABLE 17 TOTAL DEPARTURES BY COUNTRY OF RESIDENCE AND AGE GROUP - 2008.....	50
TABLE 18 : TOTAL DEPARTURES BY COUNTRY OF RESIDENCE AND MONTH - 2008 .....	53
TABLE 19 :TOTAL DEPARTURES BY COUNTRY OF RESIDENCE AND BORDER POST - 2008 .....	56
TABLE 20 : TOTAL DEPARTURES BY BORDER POST AND MONTH - 2008.....	66
TABLE 21 : TOTAL DEPARTURES BY MONTH AND MODE OF TRAVEL - 2008.....	67

**TABLE 22: TOTAL DEPARTURE BY MONTH AND QUARTER FOR YEAR 1998 - 2008 ..... 68**

# EXECUTIVE SUMMARY

## 1.0 Introduction

Tourism Statistics Report is an annual publication containing statistics of non-citizens entering and leaving the country. Country of residence, nationality, purpose of entry, mode of travel, point of entry/departure or border post, age and sex classify the statistics compiled in this report. This information is collected through the border posts from the departure/entry forms, completed by persons crossing the border. It is worth noting that only non-citizens fill this form, as citizens are exempted from filling it.

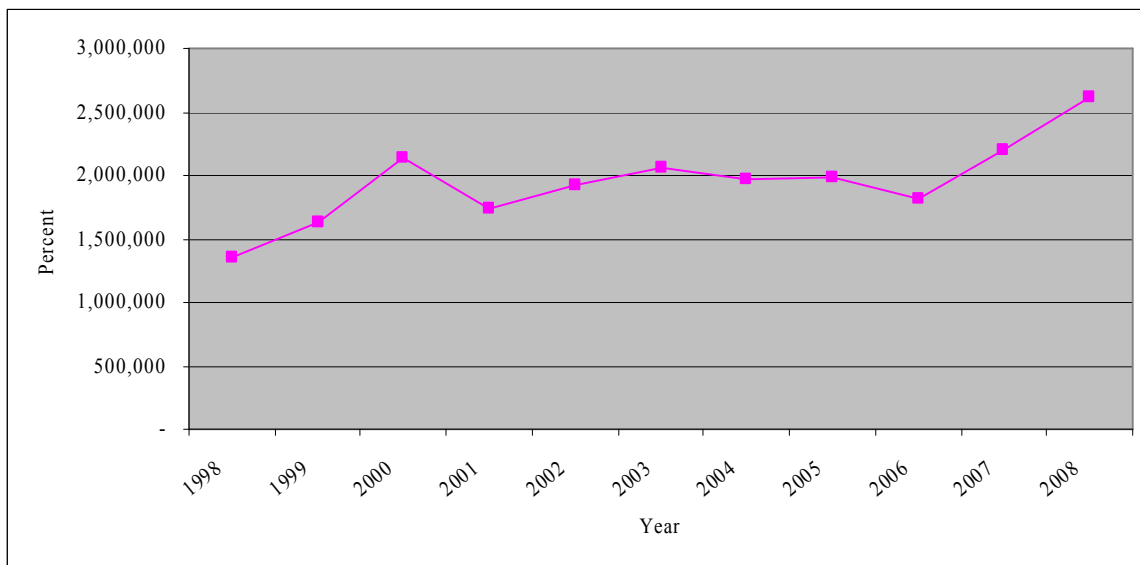
## 2.0 Arrangement of Tables

Tables in this publication deal with two categories of arrivals and departures; Tables 1 to 15 show information on arrivals, while Tables 16 to 22 provides information on departures.

## 3.0 Total Arrivals

The number of arrivals in 2008 was 2, 608, 886, reflecting an increase of 15.6 percent from 2,200,953 in the year 2007. (Table 1). Chart 1 exhibits arrival trends from 1998 up to 2008. The arrivals pattern shows an increasing trend with the exception of 2001, 2004 and 2006.

**Chart 1: Total Arrivals 1998 - 2008**



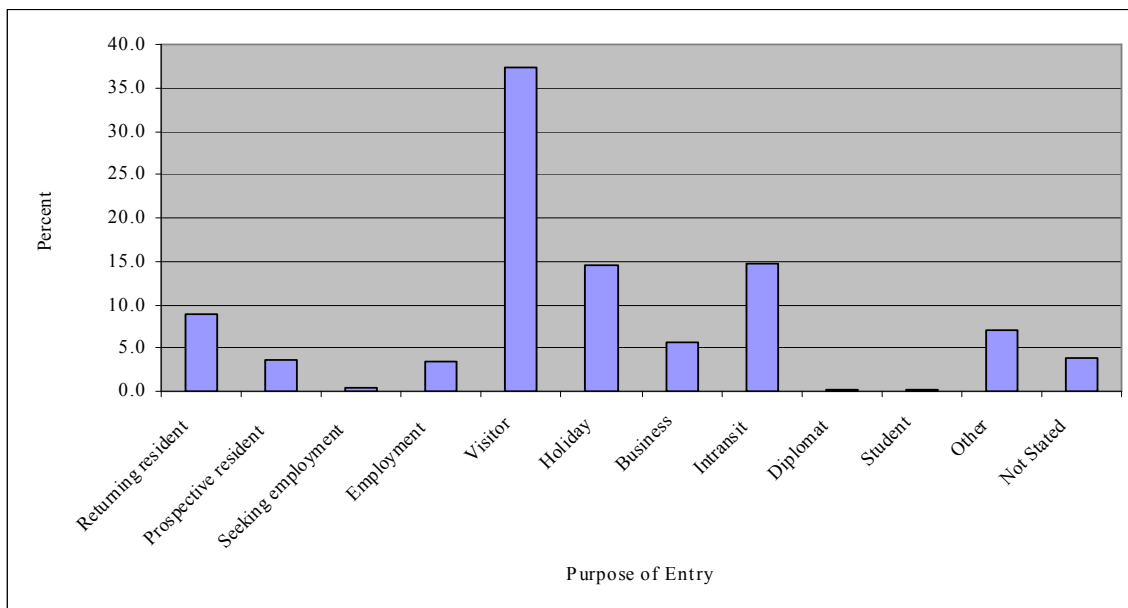
### 3.1 Arrivals by Country of Residence

The country of Zimbabwe constituted the highest proportion of (39.4 percent) all persons who came to Botswana in 2008, followed by Republic of South Africa (25.6 percent) (Table 1). This can be linked to the closeness of these countries to Botswana and also being trade partners. The highest proportion of arrivals (91.7 percent) was from Africa. The European countries constituted only 4.2 percent of the total arrivals while America contributed 1.9 percent and the continents of Asia and Oceania constituted 0.8 percent and 0.6 percent respectively.

### 3.2 Arrivals by Purpose of Entry

Table 2 and Chart 2 indicate that most of the arrivals in 2008 came as Visitors (37.4 percent), whilst 14.8 percent were in transit. More males than females entered the country for different reasons. However, it is only for “visiting” reasons where females outnumbered their male counterparts. The highest number of visitors came from Zimbabwe, while South Africa contributed the highest proportion among persons on holiday (tourists).

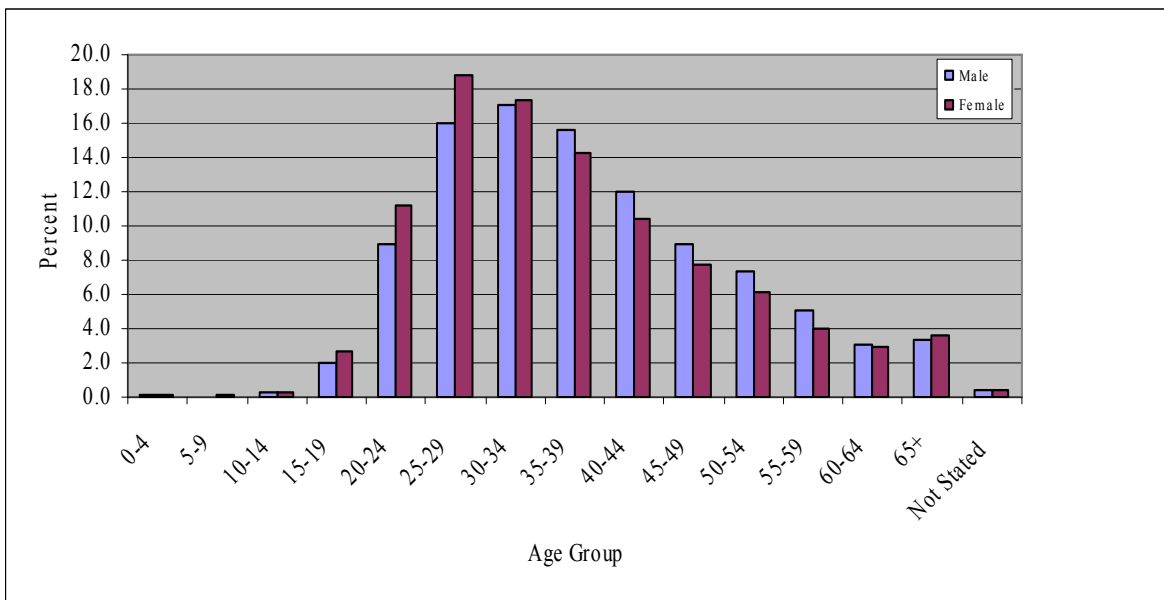
**Chart 2: Percentage of Arrivals by Purpose of Entry - 2008**



### 3.3 Distribution of Arrivals by Sex and Age group

The report shows that males constituted the highest proportion of arrivals. There were about 1.539 million males and only 1.070 million females (Table 2), entering the country in 2008. The highest proportion of the total arrivals was in age group 30–34 (17.2 percent) followed by age group 25 – 29 (17.1 percent) see Chart 3 and table 3. The lowest number of arrivals was recorded in the age group 5-9 years (0.1 percent). This low figure may have been mainly attributable to non-filling of the arrival/departure forms by this age group, since they normally accompany their parents. The main purpose of arrival was “visiting” for both sexes (See Table 2).

**Chart 3: Percentage of Total Arrivals by Age Group and Sex - 2008**



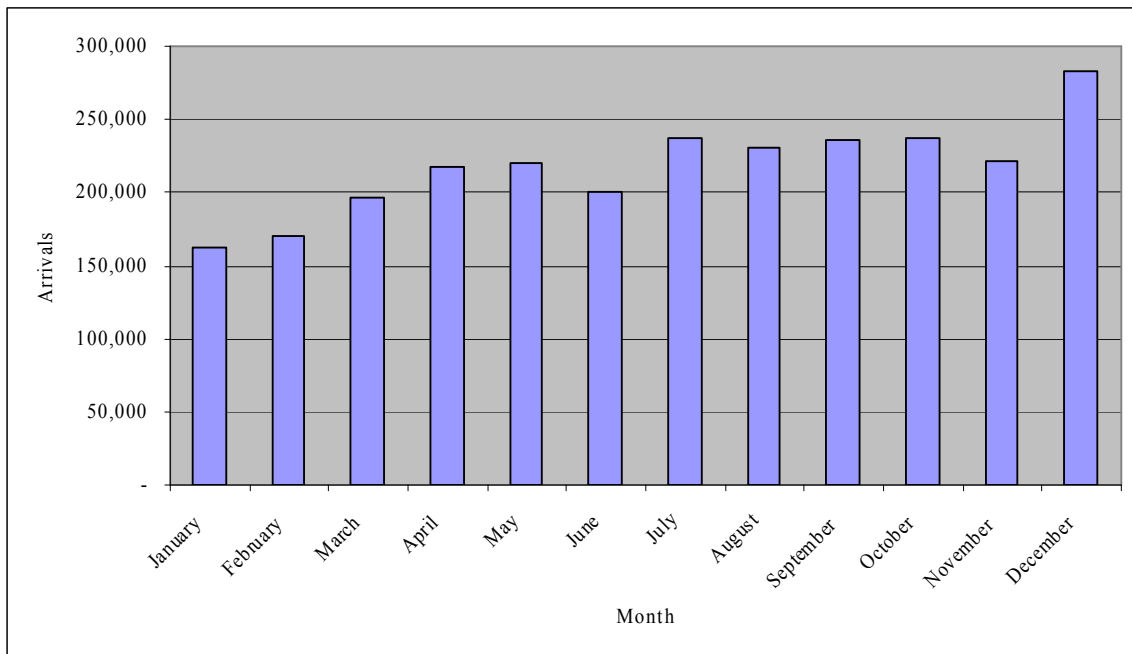
### 3.4 Arrivals by Border Post

There were about 927,610 arrivals using Ramokgwebana road as the point of entry out of 2,608,886 persons (Table 7). This border had the highest proportion of arrivals/entrants (35.6 percent). The next border posts were Kazungula ferry and Tlokweng gate with 11.3 percent and 10.4 percent respectively. The lowest proportion (0.031 percent) of entrants used Boshhoek. Sir Seretse Khama Airport had the highest proportion of arrivals of 3.3 percent when compared to other airports.

### 3.5 Month of Arrival

Chart 4 shows that December was the busiest month of arrival with 282,363 persons entering the country. The second busiest month was October and July with 237,691 and 236,655 arrivals respectively (Table 8). The least number of arrivals occurred in January with 162,070 persons. Most of the arrivals (37.4 percent) entered the country for visiting purposes see (Table 13).

**Chart 4: Total Arrivals by Month of Arrivals - 2008**



### 3.6 Mode of Travel

The most common mode of travel is road, which is used by 92.7 percent of all persons entering the country (Table 8). This is attributable to the fact that most of the entry borders are accessed by the road. Those who used air were about 5.0 percent; and those who used rail were about 2.3 percent and the rest used other modes like water.



#### 4.0 Total Departures

A total of 2,512,692 departures were recorded in 2008 (Table 16), an increase of 15.4 percent from the 2007 departure figure of about 2,126,902. The 2008 figure shows that there were more arrivals than departures. Out of all departures, males constituted the highest proportion of 59.1 percent compared to their female counterparts.

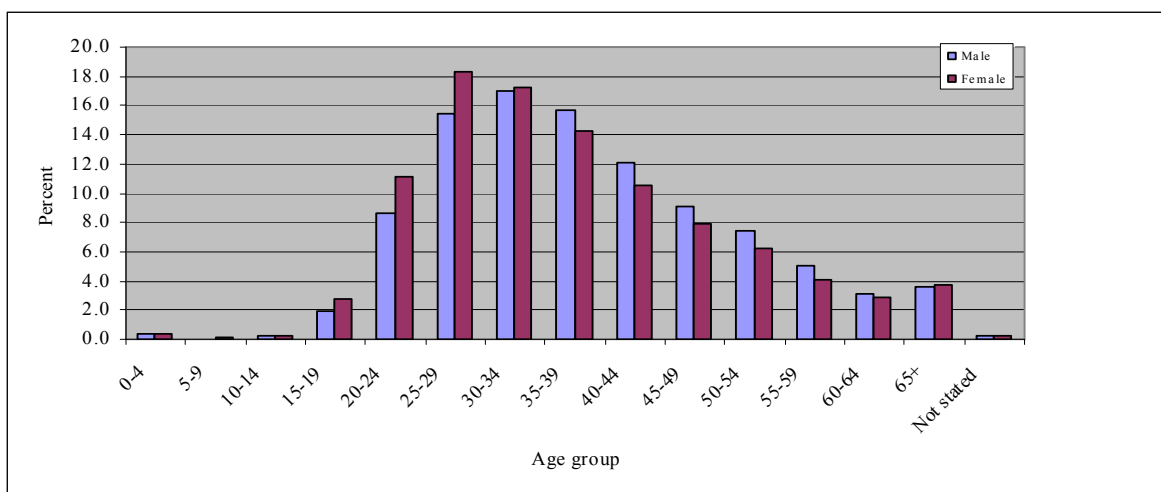
#### 4.1 Departures by Country of Residence

People departing from Botswana were mostly from Southern Africa, with Zimbabwe constituting the highest percentage (39.1 percent) followed by South Africa (26.1 percent), Zambia (10.3 percent) and Namibia (4.4 percent) see Table16. Departures from America were mostly from United States of America. The Europeans were mostly residents of the United Kingdom and the Asians were residents of Japan.

#### 4.2 Departures by Sex and Age

Table 17 shows that age group 30-34 recorded the highest proportion of 17.1 percent of the total departures. The second largest proportion of departures was recorded in age group 25-29, (16.7 percent) followed by age group 35-39 with 15.1 percent. South Africa recorded the highest proportion (36.5 percent) of elderly aged 65 and above years.

**Chart 5: Percentage of Total Departure by Sex and Age Group - 2008**



### **4.3 Distribution by Month, Mode of Travel and Border**

Most of the departures in 2008 left during December (11.9 percent) followed by August (9.9 percent), July and October (9.1 percent) each and November and April (8.6 percent and 8.2 percent respectively) as shown in Table 20. These months constituted the highest proportions, the reason could be that there are public holidays like Christmas, Presidential and Easter holidays. The highest proportion left through Ramokgwebana road (34.9 percent) followed by Kazungula ferry (11.0 percent) and Tlokweng gate (9.9 percent), see Table 20. Majority of monthly departures were by road (92.3 percent) followed by those who used air with 5.1 percent while rail was 2.6 percent (Table 21). Among those using air as their mode of travel, 65.5 percent used Sir Seretse Khama airport and Shakawe was the least with 0.01 percent.

**Table 1: Total Arrivals by Country of Residence and Sex - 2008**

<b>Country of Residence</b>	<b>Male</b>	<b>Female</b>	<b>Total</b>
<b>Africa</b>			
Zimbabwe	495,427	531,750	<b>1,027,177</b>
South Africa	489,480	177,210	<b>666,690</b>
Zambia	158,029	120,306	<b>278,335</b>
Botswana	181,144	89,359	<b>270,503</b>
Namibia	80,590	34,629	<b>115,219</b>
Lesotho	3,692	3,735	<b>7,427</b>
Malawi	4,466	1,361	<b>5,827</b>
Swaziland	3,671	1,533	<b>5,204</b>
Mozambique	3,184	974	<b>4,158</b>
Kenya	2,215	851	<b>3,066</b>
Tanzania	1,816	613	<b>2,429</b>
Uganda	874	322	<b>1,196</b>
DRC	860	210	<b>1,070</b>
Angola	556	234	<b>790</b>
Nigeria	501	181	<b>682</b>
Mauritius	517	160	<b>677</b>
Ghana	165	201	<b>366</b>
Ethiopia	131	150	<b>281</b>
Egypt	181	60	<b>241</b>
Madagascar	140	10	<b>150</b>
Rwanda	71	31	<b>102</b>
Gabon	51	31	<b>82</b>
Senegal	52	20	<b>72</b>
Cote d ivoire	40	30	<b>70</b>
Sierra leone	60	10	<b>70</b>
Sudan	40	30	<b>70</b>
Somalia	70	-	<b>70</b>
Sychelles	41	20	<b>61</b>
Tunisia	60	-	<b>60</b>
Cameroon	20	40	<b>60</b>
Libya	30	20	<b>50</b>
Other Africa	332	121	<b>453</b>
<b>America</b>			
United States America	19,368	23,045	<b>42,413</b>
Canada	3,287	3,377	<b>6,664</b>
Mexico	193	225	<b>418</b>
Brazil	260	152	<b>412</b>
Argentina	92	92	<b>184</b>
Chile	55	31	<b>86</b>
Colombia	50	30	<b>80</b>
Cuba	41	30	<b>71</b>
Jamaica	21	41	<b>62</b>
Barbados	31	20	<b>51</b>
Venezuela	-	50	<b>50</b>
Other America	146	98	<b>244</b>

**Table 1: Total Arrivals by Country of Residence and Sex – 2008 (cont'd)**

<b>Country of Residence</b>	<b>Male</b>	<b>Female</b>	<b>Total</b>
<b>Europe</b>			
United Kingdom	14,262	14,157	<b>28,419</b>
Germany	12,063	11,217	<b>23,280</b>
Netherlands	5,747	5,772	<b>11,519</b>
France	4,744	4,646	<b>9,390</b>
Italy	2,886	2,844	<b>5,730</b>
Spain	2,787	2,859	<b>5,646</b>
Switzerland	2,503	2,669	<b>5,172</b>
Belgiumluxenburg	1,759	1,510	<b>3,269</b>
Ireland	1,189	983	<b>2,172</b>
Austria	1,218	946	<b>2,164</b>
Denmark	1,164	985	<b>2,149</b>
Russia	1,010	876	<b>1,886</b>
Norway	763	1,003	<b>1,766</b>
Sweden	927	827	<b>1,754</b>
Portugal	434	306	<b>740</b>
Czechoslovakia	393	233	<b>626</b>
Poland	373	246	<b>619</b>
Slovakia	220	190	<b>410</b>
Ukraine	233	152	<b>385</b>
Finland	104	280	<b>384</b>
Hungary	161	111	<b>272</b>
Greece	123	116	<b>239</b>
Luxembourg	115	72	<b>187</b>
Yugoslavia	62	40	<b>102</b>
Bulgaria	50	50	<b>100</b>
Croatia	31	50	<b>81</b>
Iceland	50	30	<b>80</b>
Estonia	40	21	<b>61</b>
Lithuania	20	40	<b>60</b>
Other Europe	161	60	<b>221</b>
<b>Asia</b>			
Japan	3,358	4,812	<b>8,170</b>
India	2,201	917	<b>3,118</b>
China	2,335	692	<b>3,027</b>
Korea	850	1,020	<b>1,870</b>
Israel	808	234	<b>1,042</b>
Singapore	338	199	<b>537</b>
Malaysia	280	120	<b>400</b>
Bangladesh	250	60	<b>310</b>
Sri lanka	211	91	<b>302</b>
Hong kong	125	144	<b>269</b>
Pakistan	173	80	<b>253</b>
Philippines	73	109	<b>182</b>
Turkey	100	70	<b>170</b>
Thailand	52	111	<b>163</b>
Taiwan	80	80	<b>160</b>

**Table 1: Total Arrivals by Country of Residence and Sex – 2008 (cont'd)**

<b>Country of Residence</b>	<b>Male</b>	<b>Female</b>	<b>Total</b>
<b>Asia</b>			
Indonesia	40	70	<b>110</b>
Lebanon	72	11	<b>83</b>
Cyprus	22	30	<b>52</b>
Saudi arabia	30	21	<b>51</b>
Other Asia	121	61	<b>182</b>
<b>Oceania</b>			
Australia	6,477	7,070	<b>13,547</b>
New zealand	1,290	1,189	<b>2,479</b>
Fiji	20	-	<b>20</b>
Papua new guinea	10	-	<b>10</b>
Not Stated	11,988	8,065	<b>20,053</b>
<b>Total</b>	<b>1,538,946</b>	<b>1,069,940</b>	<b>2,608,886</b>

**Table 2: Total Arrivals by Purpose of Entry and Sex - 2008**

<b>Entry Purpose</b>	<b>Male</b>	<b>Female</b>	<b>Total</b>	<b>Percent</b>
Returning resident	152,718	79,405	<b>232,123</b>	8.9
Prospective resident	47,571	45,665	<b>93,236</b>	3.6
Seeking employment	6,772	2,447	<b>9,219</b>	0.4
Employment	53,908	36,739	<b>90,647</b>	3.5
Visitor	474,390	501,702	<b>976,092</b>	37.4
Holiday	233,439	147,729	<b>381,168</b>	14.6
Business	113,673	32,614	<b>146,287</b>	5.6
Intransit	284,951	100,986	<b>385,937</b>	14.8
Diplomat	3,600	1,761	<b>5,361</b>	0.2
Student	1,957	1,318	<b>3,275</b>	0.1
Other	104,618	82,085	<b>186,703</b>	7.2
Not Stated	61,349	37,489	<b>98,838</b>	3.8
<b>Total</b>	<b>1,538,946</b>	<b>1,069,940</b>	<b>2,608,886</b>	<i>100.0</i>

**Table 3 : Total Arrivals by Purpose of Entry and Age Group - 2008**

Entry Purpose	0-4	5-9	10-14	15-19	20-24	25-29	30-34	35-39	40-44	45-49	50-54	55-59	60-64	65+	Not	Total
															Stated	
Returning resident	195	80	720	5,132	9,845	23,677	37,495	42,484	35,654	26,334	22,497	13,749	7,736	5,929	596	<b>232,123</b>
Prospective resident	175	90	262	2,331	12,369	19,545	16,306	13,651	9,132	6,387	4,949	3,112	2,125	2,275	527	<b>93,236</b>
Seeking employment	30	-	1	192	787	1,641	1,367	1,353	1,128	752	654	533	411	330	40	<b>9,219</b>
Employment	64	134	277	2,462	5,645	9,790	11,486	10,175	9,755	8,961	8,351	7,590	6,533	8,966	458	<b>90,647</b>
Visitor	1,352	821	2,337	20,085	125,376	211,981	186,314	144,240	96,662	63,786	48,290	30,246	17,843	22,319	4,440	<b>976,092</b>
Holiday	228	117	846	9,517	30,682	51,472	54,122	48,097	40,017	36,398	31,845	26,350	22,362	27,379	1,736	<b>381,168</b>
Business	21	50	54	1,463	9,851	23,708	27,121	23,927	19,044	14,334	11,404	8,459	3,742	2,617	492	<b>146,287</b>
Intransit	211	151	901	10,157	33,559	55,484	64,553	63,483	50,915	36,330	29,211	17,535	9,783	11,877	1,787	<b>385,937</b>
Diplomat	10	-	10	150	389	720	550	654	745	779	656	402	103	142	51	<b>5,361</b>
Student	-	10	60	281	1,094	684	272	210	170	200	90	73	70	31	30	<b>3,275</b>
Other	162	95	296	4,211	20,493	33,790	32,741	28,884	21,023	15,247	12,448	6,702	4,751	5,051	809	<b>186,703</b>
Not Stated	269	152	385	1,883	7,411	14,568	15,521	15,158	11,994	9,973	8,546	5,366	3,012	4,075	525	<b>98,838</b>
<b>Total</b>	<b>2,717</b>	<b>1,700</b>	<b>6,149</b>	<b>57,864</b>	<b>257,501</b>	<b>447,060</b>	<b>447,848</b>	<b>392,316</b>	<b>296,239</b>	<b>219,481</b>	<b>178,941</b>	<b>120,117</b>	<b>78,471</b>	<b>90,991</b>	<b>11,491</b>	<b>2,608,886</b>

**Table 4: Total Arrivals by Country of Residence and Purpose of Entry - 2008**

Country of Residence	Returning resident	Prospective resident	Seeking employment	Employment	Visitor	Holiday	Business	Intransit	Diplomat	Student	Other	Not Stated	Total
<b>Africa</b>													
Zimbabwe	8,842	48,960	1,825	13,586	640,583	82,364	41,970	65,825	1,260	380	93,169	28,413	<b>1,027,177</b>
South Africa	6,625	20,427	3,815	21,748	193,419	118,756	66,239	156,179	1,371	481	39,844	37,786	<b>666,690</b>
Zambia	4,482	12,274	1,604	2,196	81,756	45,418	25,668	66,978	520	220	26,972	10,247	<b>278,335</b>
Botswana	208,667	3,083	241	12,287	16,676	2,554	1,360	1,043	910	640	11,352	11,690	<b>270,503</b>
Namibia	306	2,528	785	1,255	13,345	5,975	1,834	78,387	142	151	7,502	3,009	<b>115,219</b>
Lesotho	130	450	81	380	2,376	1,132	426	741	43	600	778	290	<b>7,427</b>
Malawi	190	470	40	110	2,461	725	230	1,011	10	30	280	270	<b>5,827</b>
Swaziland	102	440	10	210	1,183	1,005	523	1,000	30	170	350	181	<b>5,204</b>
Mozambique	50	281	-	221	1,326	585	293	591	120	20	311	360	<b>4,158</b>
Kenya	90	311	30	141	801	622	260	470	40	20	201	80	<b>3,066</b>
Tanzania	100	151	20	110	651	310	244	541	51	30	150	71	<b>2,429</b>

**Table 4: Total Arrivals by Country of Residence and Purpose of Entry – 2008 (cont'd)**

Country of Residence	Returning resident	Prospective resident	Seeking employment	Employment	Visitor	Holiday	Business	Intransit	Diplomat	Student	Other	Not Stated	Total
<b>Africa</b>													
Uganda	30	150	40	-	450	92	83	190	-	-	101	60	<b>1,196</b>
DRC	40	20	10	80	190	290	50	220	20	10	100	40	<b>1,070</b>
Angola	30	10	-	50	120	259	70	30	80	10	91	40	<b>790</b>
Nigeria	100	40	-	10	150	92	40	20	30	20	140	40	<b>682</b>
Mauritius	20	50	-	10	180	170	116	11	30	-	80	10	<b>677</b>
Ghana	31	20	-	20	70	44	71	-	-	10	90	10	<b>366</b>
Ethiopia	-	10	-	10	70	51	50	-	20	10	40	20	<b>281</b>
Egypt	-	-	-	21	80	80	10	-	-	-	30	20	<b>241</b>
Madagascar	-	-	-	20	40	20	20	-	10	10	20	10	<b>150</b>
Rwanda	-	-	-	-	20	22	10	10	20	-	20	-	<b>102</b>
Gabon	-	-	-	11	20	31	10	-	-	10	-	-	<b>82</b>
Senegal	-	-	-	-	-	31	21	-	-	-	10	10	<b>72</b>
Cote d ivoire	-	-	-	-	-	30	20	10	-	-	10	-	<b>70</b>
Sierra leone	10	10	-	-	10	10	-	-	-	20	-	10	<b>70</b>
Sudan	-	10	-	-	-	40	-	-	-	-	10	10	<b>70</b>
Somalia	10	-	-	-	10	20	10	-	-	-	-	20	<b>70</b>
Sychelles	-	-	-	10	20	10	11	-	-	-	-	10	<b>61</b>
Tunisia	10	-	-	-	20	10	10	-	-	-	10	-	<b>60</b>
Cameroon	-	-	-	-	20	10	30	-	-	-	-	-	<b>60</b>
Libya	-	-	-	-	30	10	-	-	-	-	10	-	<b>50</b>
Other Africa	10	10	-	1	70	92	70	40	20	-	120	20	<b>453</b>
<b>America</b>													
USA	161	585	125	9,253	2,355	26,076	930	1,502	172	222	675	357	<b>42,413</b>
Canada	30	211	20	1,551	433	3,738	165	313	-	-	117	86	<b>6,664</b>
Mexico	1	-	10	66	21	310	-	-	-	-	10	-	<b>418</b>
Brazil	-	10	-	101	10	241	10	20	10	-	10	-	<b>412</b>
Argentina	-	-	-	43	10	101	-	10	-	20	-	-	<b>184</b>
Chile	10	-	-	10	10	36	-	10	-	-	10	-	<b>86</b>
Colombia	-	-	-	-	-	70	-	10	-	-	-	-	<b>80</b>
Cuba	-	-	-	20	20	1	-	-	20	-	-	10	<b>71</b>
Jamaica	-	11	-	10	10	11	10	10	-	-	-	-	<b>62</b>
Barbados	10	-	-	10	10	20	-	-	-	-	-	1	<b>51</b>
Venezuela	-	-	-	10	-	40	-	-	-	-	-	-	<b>50</b>
Other America	20	-	-	32	40	130	-	2	-	-	20	-	<b>244</b>

**Table 4: Total Arrivals by Country of Residence and Purpose of Entry – 2008 (cont'd)**

<b>Country of Residence</b>	<b>Returning resident</b>	<b>Prospective resident</b>	<b>Seeking employment</b>	<b>Employment</b>	<b>Visitor</b>	<b>Holiday</b>	<b>Business</b>	<b>Intransit</b>	<b>Diplomat</b>	<b>Student</b>	<b>Other</b>	<b>Not Stated</b>	<b>Total</b>
<b>Europe</b>													
United Kingdom	348	442	76	3,188	3,135	17,542	1,314	1,577	20	40	404	333	<b>28,419</b>
Germany	52	154	101	5,461	1,006	13,147	227	2,412	50	11	253	406	<b>23,280</b>
Netherlands	30	102	40	2,762	466	7,134	133	426	10	-	183	233	<b>11,519</b>
France	41	80	13	1,843	321	5,912	383	453	31	-	147	166	<b>9,390</b>
Italy	10	32	21	1,213	204	3,744	70	262	-	-	120	54	<b>5,730</b>
Spain	10	20	43	1,147	202	3,716	100	326	-	-	30	52	<b>5,646</b>
Switzerland	10	-	12	1,143	194	3,125	32	455	20	10	123	48	<b>5,172</b>
Belgiumluxenburg	-	40	10	581	165	1,982	163	200	40	10	41	37	<b>3,269</b>
Ireland	10	40	11	267	182	1,409	81	111	-	-	20	41	<b>2,172</b>
Austria	3	1	1	610	94	1,046	71	213	-	10	22	93	<b>2,164</b>
Denmark	10	40	-	416	120	1,154	30	233	-	-	50	96	<b>2,149</b>
Russia	10	-	-	334	183	1,065	38	144	50	-	40	22	<b>1,886</b>
Norway	-	10	-	430	212	1,004	30	40	-	30	-	10	<b>1,766</b>
Sweden	-	31	-	397	121	1,013	60	101	-	-	21	10	<b>1,754</b>
Portugal	20	20	10	72	90	348	40	70	-	-	30	40	<b>740</b>
Czechoslovakia	10	-	-	144	40	342	10	40	-	-	20	20	<b>626</b>
Poland	10	-	20	123	20	296	-	140	-	-	10	-	<b>619</b>
Slovakia	-	10	-	70	20	250	-	40	-	-	10	10	<b>410</b>
Ukraine	10	20	-	81	20	193	20	-	-	-	20	21	<b>385</b>
Finland	11	10	-	61	20	222	-	30	10	-	10	10	<b>384</b>
Hungary	-	-	-	30	-	222	-	10	-	-	-	10	<b>272</b>
Greece	-	-	-	34	1	180	1	10	-	-	-	13	<b>239</b>
Luxembourg	-	-	-	11	10	115	1	30	10	-	-	10	<b>187</b>
Yugoslavia	20	10	-	-	40	10	2	-	-	-	-	20	<b>102</b>
Bulgaria	20	-	-	-	30	30	10	-	-	-	10	-	<b>100</b>
Croatia	-	-	-	31	-	40	-	-	-	-	-	10	<b>81</b>
Iceland	-	-	-	10	20	20	10	10	10	-	-	-	<b>80</b>
Estonia	-	-	-	30	-	31	-	-	-	-	-	-	<b>61</b>
Lithuania	10	-	-	20	-	20	-	-	-	-	-	10	<b>60</b>
Other Europe	10	10	-	20	30	101	10	20	-	-	20	-	<b>221</b>



**Table 4: Total Arrivals by Country of Residence and Purpose of Entry – 2008 (cont'd)**

Country of Residence	Returning resident	Prospective resident	Seeking employment	Employment	Visitor	Holiday	Business	Intransit	Diplomat	Student	Other	Not Stated	Total
<b>Asia</b>													
Japan	20	20	60	1,651	150	5,908	141	70	10	20	60	60	<b>8,170</b>
India	342	170	30	230	823	600	411	20	10	-	130	352	<b>3,118</b>
China	250	50	-	530	440	866	371	40	50	20	80	330	<b>3,027</b>
Korea	20	20	-	200	60	1,470	50	10	-	-	30	10	<b>1,870</b>
Israel	20	10	10	144	100	544	101	41	-	-	20	52	<b>1,042</b>
Singapore	-	20	-	90	30	347	40	-	-	-	10	-	<b>537</b>
Malaysia	-	-	-	70	30	210	60	10	-	-	10	10	<b>400</b>
Bangladesh	60	10	-	30	80	10	-	-	-	-	30	90	<b>310</b>
Sri lanka	20	-	10	62	60	100	10	-	-	-	10	30	<b>302</b>
Hong kong	-	10	10	21	10	168	20	10	-	10	-	10	<b>269</b>
Pakistan	32	40	-	10	70	51	-	10	-	-	20	20	<b>253</b>
Philippines	10	-	-	22	20	117	-	2	-	-	11	-	<b>182</b>
Turkey	-	-	-	40	-	100	10	-	-	-	-	20	<b>170</b>
Thailand	10	20	-	10	30	63	10	10	-	-	-	10	<b>163</b>
Taiwan	-	10	-	30	-	100	-	10	-	-	10	-	<b>160</b>
Indonesia	-	-	-	10	-	80	-	-	10	-	-	10	<b>110</b>
Lebanon	11	-	-	-	-	22	10	10	-	-	10	20	<b>83</b>
Cyprus	-	-	-	10	10	12	-	20	-	-	-	-	<b>52</b>
Saudi arabia	-	-	-	-	10	11	-	-	-	-	-	30	<b>51</b>
Other Asia	-	20	-	11	30	71	10	10	10	-	20	-	<b>182</b>
<b>Oceania</b>													
Australia	10	143	32	2,167	754	9,192	436	592	10	10	111	90	<b>13,547</b>
New zealand	1	21	2	425	155	1,575	30	178	-	-	30	62	<b>2,479</b>
Fiji	-	-	-	10	-	10	-	-	-	-	-	-	<b>20</b>
Papua new guinea	-	-	-	-	-	10	-	-	-	-	-	-	<b>10</b>
<b>Not Stated</b>	555	1,078	51	752	7,218	2,484	877	2,367	81	20	1,894	2,676	<b>20,053</b>
<b>Total</b>	<b>232,123</b>	<b>93,236</b>	<b>9,219</b>	<b>90,647</b>	<b>976,092</b>	<b>381,168</b>	<b>146,287</b>	<b>385,937</b>	<b>5,361</b>	<b>3,275</b>	<b>186,703</b>	<b>98,838</b>	<b>2,608,886</b>

**Table 5: Total Arrivals by Country of Residence and Month of Arrival - 2008**

Country Residence	January	February	March	April	May	June	July	August	September	October	November	December	Total
<b>Africa</b>													
Zimbabwe	48,549	70,899	64,817	86,218	87,892	70,151	96,677	88,085	94,947	99,505	98,294	121,143	<b>1,027,177</b>
South Africa	47,257	39,793	55,882	56,028	50,931	58,649	55,955	56,466	60,106	52,044	48,904	84,675	<b>666,690</b>
Zambia	17,937	17,402	21,064	27,456	28,904	24,596	26,814	25,740	22,923	22,187	20,364	22,948	<b>278,335</b>
Botswana	23,406	19,077	24,621	19,897	23,417	20,908	22,908	23,181	22,220	23,667	22,834	24,367	<b>270,503</b>
Namibia	9,426	7,101	10,346	9,596	9,017	8,339	10,155	10,897	9,065	9,297	9,906	12,074	<b>115,219</b>
Lesotho	240	1,810	744	440	370	443	711	551	531	541	396	650	<b>7,427</b>
Malawi	401	330	472	410	460	501	412	440	610	600	470	721	<b>5,827</b>
Swaziland	331	1,023	454	430	342	332	260	600	301	350	321	460	<b>5,204</b>
Mozambique	273	231	156	451	161	192	330	251	380	912	361	460	<b>4,158</b>
Kenya	241	290	172	240	260	230	141	250	232	350	350	310	<b>3,066</b>
Tanzania	162	140	216	301	131	191	270	232	234	150	262	140	<b>2,429</b>
Uganda	60	130	204	30	170	132	-	130	10	110	120	100	<b>1,196</b>
DRC	50	90	70	60	110	60	90	110	140	120	100	70	<b>1,070</b>
Angola	30	60	64	42	144	60	60	40	110	30	60	90	<b>790</b>
Nigeria	30	70	70	50	30	70	50	60	102	80	20	50	<b>682</b>
Mauritius	80	60	71	80	30	40	100	40	40	31	73	32	<b>677</b>
Ghana	10	11	22	50	20	12	20	50	50	21	40	60	<b>366</b>
Ethiopia	-	30	41	20	10	20	-	50	70	20	-	20	<b>281</b>
Egypt	11	-	20	30	10	50	20	20	20	40	10	10	<b>241</b>
Madagascar	-	-	20	10	20	10	10	20	20	-	40	-	<b>150</b>
Rwanda	-	-	2	10	20	-	20	30	10	10	-	-	<b>102</b>
Gabon	-	-	10	10	-	10	30	2	-	-	20	-	<b>82</b>
Senegal	12	-	20	-	10	-	-	-	-	20	-	10	<b>72</b>
Cote d ivoire	10	-	-	-	-	-	-	-	20	-	30	10	<b>70</b>
Sierra leone	30	10	-	10	10	-	-	-	-	10	-	-	<b>70</b>
Sudan	-	10	10	-	-	10	-	-	10	-	20	10	<b>70</b>
Somalia	-	-	-	20	10	-	-	-	10	-	30	-	<b>70</b>
Seychelles	-	-	11	10	10	-	-	-	10	10	10	-	<b>61</b>
Tunisia	10	10	10	10	-	-	10	-	10	-	-	-	<b>60</b>
Cameroon	-	-	40	-	-	-	-	-	10	-	-	10	<b>60</b>
Libya	10	30	-	10	-	-	-	-	-	-	-	-	<b>50</b>
Other Africa	31	30	62	40	20	30	20	-	60	40	80	40	<b>453</b>

**Table 5: Total Arrivals by Country of Residence and Month of Arrival – 2008 (cont'd).**

<b>Country Residence</b>	<b>January</b>	<b>February</b>	<b>March</b>	<b>April</b>	<b>May</b>	<b>June</b>	<b>July</b>	<b>August</b>	<b>September</b>	<b>October</b>	<b>November</b>	<b>December</b>	<b>Total</b>
<b>America</b>													
USA	2,742	1,615	3,528	3,033	4,348	5,028	5,494	4,175	4,464	3,208	2,898	1,880	<b>42,413</b>
Canada	447	434	812	544	417	439	698	597	605	664	569	438	<b>6,664</b>
Mexico	31	10	50	30	33	19	40	46	81	25	17	36	<b>418</b>
Brazil	50	32	42	-	20	20	31	44	30	32	40	71	<b>412</b>
Argentina	41	20	20	20	21	-	10	2	20	20	10	-	<b>184</b>
Chile	-	10	-	10	22	-	10	-	11	20	-	3	<b>86</b>
Colombia	-	-	30	10	10	10	10	10	-	-	-	-	<b>80</b>
Cuba	-	-	-	11	30	20	-	-	10	-	-	-	<b>71</b>
Jamaica	-	-	20	-	10	-	30	-	-	2	-	-	<b>62</b>
Barbados	10	-	-	20	-	-	-	10	-	1	-	10	<b>51</b>
Venezuela	-	10	-	-	-	20	-	-	-	-	10	10	<b>50</b>
Other America	10	20	63	30	30	46	14	-	-	21	10	-	<b>244</b>
<b>Europe</b>													
United Kingdom	1,941	1,901	2,524	2,415	2,039	2,014	3,120	3,136	2,682	2,749	2,246	1,652	<b>28,419</b>
Germany	1,447	904	1,482	1,226	1,663	1,366	2,146	2,659	3,093	3,294	2,523	1,477	<b>23,280</b>
Netherlands	626	510	686	622	863	451	1,418	1,453	1,602	1,502	1,143	643	<b>11,519</b>
France	593	699	589	701	762	486	847	1,330	709	855	1,330	489	<b>9,390</b>
Italy	324	144	179	458	335	434	486	1,843	518	524	303	182	<b>5,730</b>
Spain	220	265	364	434	299	297	492	1,708	526	552	318	171	<b>5,646</b>
Switzerland	329	188	309	330	478	281	546	609	632	754	519	197	<b>5,172</b>
Belgiumluxenburg	186	232	229	240	246	144	593	420	209	328	286	156	<b>3,269</b>
Ireland	133	104	210	141	100	113	546	294	157	104	90	180	<b>2,172</b>
Austria	117	81	116	103	122	110	311	316	114	296	357	121	<b>2,164</b>
Denmark	140	344	322	221	41	100	230	93	110	323	155	70	<b>2,149</b>
Russia	341	100	177	113	181	110	141	175	127	130	160	131	<b>1,886</b>
Norway	160	230	260	170	71	100	201	90	60	162	150	112	<b>1,766</b>
Sweden	151	274	299	90	31	60	50	91	71	171	249	217	<b>1,754</b>
Portugal	60	30	51	70	21	80	50	122	54	91	51	60	<b>740</b>
Czechoslovakia	54	40	30	50	-	-	20	70	151	120	61	30	<b>626</b>
Poland	31	14	30	20	31	11	90	42	100	40	180	30	<b>619</b>
Slovakia	40	-	40	10	20	20	-	-	30	110	120	20	<b>410</b>
Ukraine	70	30	40	-	60	10	-	10	60	10	60	35	<b>385</b>

**Table 5: Total Arrivals by Country of Residence and Month of Arrival – 2008 (cont'd).**

<b>Country Residence</b>	<b>January</b>	<b>February</b>	<b>March</b>	<b>April</b>	<b>May</b>	<b>June</b>	<b>July</b>	<b>August</b>	<b>September</b>	<b>October</b>	<b>November</b>	<b>December</b>	<b>Total</b>
<b>Europe</b>													
Finland	10	40	40	10	11	30	50	21	30	60	51	31	<b>384</b>
Hungary	-	31	40	-	-	10	20	1	10	10	90	60	<b>272</b>
Greece	2	10	10	23	20	30	10	50	2	12	30	40	<b>239</b>
Luxembourg	11	-	10	20	10	10	20	22	12	-	42	30	<b>187</b>
Yugoslavia	20	10	-	30	-	-	-	-	2	10	20	10	<b>102</b>
Bulgaria	-	-	10	-	20	20	10	20	10	-	-	10	<b>100</b>
Croatia	-	-	1	-	10	-	-	40	-	10	20	-	<b>81</b>
Iceland	10	-	10	10	-	30	-	-	-	20	-	-	<b>80</b>
Estonia	11	-	-	20	-	-	10	-	-	-	20	-	<b>61</b>
Lithuania	10	-	-	40	-	-	-	-	-	10	-	-	<b>60</b>
Other Europe	10	20	41	-	20	20	-	-	20	30	40	20	<b>221</b>
<b>Asia</b>													
Japan	483	630	710	461	880	770	620	633	690	1,660	343	290	<b>8,170</b>
India	212	210	352	360	325	340	210	250	211	275	130	243	<b>3,118</b>
China	250	380	350	210	242	200	391	190	210	150	252	202	<b>3,027</b>
Korea	340	220	190	120	130	110	150	280	110	90	70	60	<b>1,870</b>
Israel	40	55	100	100	70	121	101	170	60	115	100	10	<b>1,042</b>
Singapore	21	30	50	20	64	50	51	110	31	33	-	77	<b>537</b>
Malaysia	30	30	70	30	50	40	60	-	-	20	50	20	<b>400</b>
Bangladesh	50	30	40	10	30	-	10	30	10	30	10	60	<b>310</b>
Sri lanka	20	-	40	50	50	30	10	12	-	10	30	50	<b>302</b>
Hong kong	10	20	30	-	40	50	-	27	10	30	22	30	<b>269</b>
Pakistan	12	20	10	-	20	30	50	20	21	30	20	20	<b>253</b>
Philipines	20	-	20	-	21	34	10	16	-	20	20	21	<b>182</b>
Turkey	20	-	30	-	10	10	-	20	10	40	30	-	<b>170</b>
Thailand	30	-	10	20	10	-	20	50	2	21	-	-	<b>163</b>
Taiwan	-	-	-	-	-	10	20	30	50	20	30	-	<b>160</b>
Indonesia	10	10	-	-	10	-	-	-	20	10	30	20	<b>110</b>
Lebanon	-	-	13	10	-	-	20	10	20	10	-	-	<b>83</b>
Cyprus	-	11	-	-	10	1	-	-	10	20	-	-	<b>52</b>

**Table 5: Total Arrivals by Country of Residence and Month of Arrival – 2008 (cont'd).**

Country Residence	January	February	March	April	May	June	July	August	September	October	November	December	Total
<b>Asia</b>													
Saudi arabia	-	-	10	-	20	10	-	-	-	1	-	10	<b>51</b>
Other Asia	-	30	10	10	-	20	30	30	1	1	20	30	<b>182</b>
<b>Oceania</b>													
Fiji	1,122	561	1,035	1,244	1,158	1,029	1,567	1,426	1,863	1,048	692	802	<b>13,547</b>
Papua new guinea	204	62	141	120	102	281	307	311	268	389	152	142	<b>2,479</b>
Australia	-	-	-	-	-	-	-	-	-	20	-	-	<b>20</b>
New zealand	-	-	-	-	10	-	-	-	-	-	-	-	<b>10</b>
<b>Not Stated</b>	221	801	750	1,364	1,376	84	221	26	3,148	7,233	1,635	3,194	<b>20,053</b>
<b>Total</b>	<b>162,070</b>	<b>170,089</b>	<b>196,316</b>	<b>217,363</b>	<b>219,532</b>	<b>200,195</b>	<b>236,655</b>	<b>230,385</b>	<b>235,308</b>	<b>237,691</b>	<b>220,919</b>	<b>282,363</b>	<b>2,608,886</b>

**Table 6: Total Arrivals by Country of Residence and Border Post - 2008**

Country of Residence	Tlokweng gate	Sir Seretse khama Air	Parrshalt	Mamono	Sikwane	Ramotswa	Francis town air	Ramokgwe bana road	Kazungula road	Maun airport	Mohembo	Plaatjan	Point drift	Ngoma
<b>Africa</b>														
Zimbabwe	8,940	2,690	740	9,000	190	320	54	788,940	63,550	60	2,070	10	20	7,000
South Africa	159,100	28,580	14,830	28,940	16,170	16,470	3,393	26,690	12,340	4,460	3,290	5,400	7,080	6,320
Zambia	12,200	1,500	90	180	50	110	12	1,830	13,270	30	100	-	-	1,300
Botswana	67,880	22,560	3,050	2,680	1,880	8,180	539	91,300	4,630	1,630	370	1,200	860	720
Namibia	1,020	1,060	50	42,300	50	30	3	2,740	3,520	190	4,090	-	10	15,910
Lesotho	5,000	410	-	100	40	50	-	80	70	-	20	-	20	-
Malawi	1,090	600	10	80	20	10	1	1,680	290	20	30	-	-	40
Swaziland	3,110	440	10	270	10	50	-	120	10	10	-	-	-	20
Mozambique	1,270	1,010	10	70	30	-	2	510	110	20	-	-	-	-
Kenya	380	1,060	10	50	-	-	1	90	90	40	120	10	-	-
Tanzania	430	590	-	80	-	10	-	70	100	-	10	10	10	20
Uganda	160	160	-	10	10	-	-	40	10	10	-	-	10	-
DRC	180	210	-	40	-	-	-	20	40	20	10	-	-	10
Angola	40	480	-	30	-	-	-	-	40	40	20	-	-	20
Nigeria	100	460	-	10	-	10	-	-	20	-	-	-	-	-
Mauritius	90	430	-	-	-	10	6	-	-	-	-	-	-	-
Ghana	40	270	-	10	-	-	2	10	-	10	-	-	-	-

Ethiopia	-	240	-	-	-	-	-	30	10	-	-	-	-	-
Egypt	-	170	-	-	-	20	-	10	-	10	-	-	-	-
Madagascar	-	150	-	-	-	-	-	-	-	-	-	-	-	-
Rwanda	10	70	-	-	-	-	-	-	10	-	-	-	-	-
Gabon	-	60	-	-	-	-	-	-	-	-	-	-	-	-
Senegal	10	60	-	-	-	-	-	-	-	-	-	-	-	-
Cote d ivoire	-	60	-	-	-	-	-	-	-	-	-	-	-	-
Sierra leone	10	50	-	-	-	-	-	-	-	-	-	-	-	-
Sudan	20	30	-	10	-	-	-	10	-	-	-	-	-	-
Somalia	10	-	-	-	-	-	-	10	-	-	-	-	-	10
Seychelles	10	20	-	-	-	-	-	-	-	-	-	-	-	-
Tunisia	-	60	-	-	-	-	-	-	-	-	-	-	-	-
Cameroon	10	50	-	-	-	-	-	-	-	-	-	-	-	-
Libya	10	40	-	-	-	-	-	-	-	-	-	-	-	-
Other Africa	40	330	-	-	-	-	1	10	10	-	-	-	-	-
<b>America</b>														
United States America	1,700	4,520	90	690	50	40	100	220	9,540	8,930	460	130	540	470
Canada	370	830	-	490	10	-	24	40	1,050	810	210	50	60	200
Mexico	-	10	-	-	-	-	-	-	60	70	10	-	-	20
Brazil	30	90	-	30	-	-	-	-	20	50	10	20	-	-
Argentina	20	10	-	10	-	-	-	-	20	30	30	-	-	10
Chile	-	40	-	10	-	-	-	-	10	10	-	-	-	-
Colombia	-	-	-	-	-	-	-	-	10	10	-	-	-	-
Cuba	20	50	-	-	-	-	-	-	-	-	-	-	-	-
Jamaica	-	20	-	20	-	-	-	-	10	-	-	-	-	-
Barbados	-	10	-	-	-	-	-	-	-	20	-	-	-	-
Venezuela	-	-	-	-	-	-	-	-	10	-	-	-	-	-
Other America	10	50	-	-	-	-	-	-	30	70	-	-	-	10
<b>Europe</b>														
United Kingdom	2,000	3,980	70	1,140	50	190	50	1,310	2,210	3,550	1,070	520	670	1,110
Germany	410	960	40	2,970	20	70	9	80	3,960	1,860	2,270	60	180	4,030
Netherlands	310	500	50	950	10	40	4	30	1,750	560	2,110	200	480	1,470
France	250	680	30	240	30	50	12	50	1,980	1,200	690	90	150	720
Italy	110	280	10	170	-	-	3	40	2,050	660	200	-	70	240
Spain	60	100	-	360	-	10	-	20	1,380	590	930	-	10	320
Switzerland	60	230	10	390	20	10	5	40	950	880	420	10	80	570
Belgiumluxenburg	140	430	10	140	10	-	2	-	340	560	180	10	250	280

**Table 6: Total Arrivals by Country of Residence and Border Post - 2008 (cont'd)**

Country of Residence	Tlokweng gate	Sir Seretse khama Air	Parrshalt	Mamono	Sikwane	Ramotswa	Francis town air	Ramokgwe bana road	Kazungula road	Maun airport	Mohembo	Plaatjan	Pointdrift	Ngoma
<b>Europe</b>														
Ireland	150	250	-	110	-	-	2	40	310	140	100	20	20	50
Austria	40	100	-	190	-	-	2	10	420	240	110	40	10	430
Denmark	70	170	10	70	-	-	-	40	360	110	30	40	210	60
Russia	70	100	-	80	10	-	14	10	350	50	20	-	-	50
Norway	90	310	20	30	20	-	3	10	350	90	180	-	90	30
Sweden	100	320	-	70	10	-	-	30	330	80	130	-	50	50
Portugal	50	110	10	20	10	-	-	-	130	60	10	-	10	30
Czechoslovakia	30	20	-	40	-	-	-	-	210	30	30	-	10	140
Poland	50	70	-	30	-	-	-	10	130	20	110	-	-	50
Slovakia	20	40	-	-	-	-	-	-	210	10	-	-	-	50
Ukraine	-	90	-	-	-	-	-	-	180	20	-	-	-	-
Finland	20	60	10	10	-	-	1	-	50	50	10	-	-	10
Hungary	10	10	-	10	-	-	-	-	70	-	20	-	-	20
Greece	-	20	-	30	-	-	1	-	40	10	-	-	-	10
Luxembourg	-	30	-	-	-	-	-	-	-	70	-	-	-	20
Yugoslavia	60	20	-	-	-	-	2	-	-	-	-	-	-	-
Bulgaria	20	30	-	-	-	-	-	-	20	10	-	-	-	-
Croatia	-	-	-	40	-	-	-	-	-	10	-	-	-	10
Iceland	-	10	-	20	10	-	-	-	20	-	-	-	-	-
Estonia	-	-	-	-	-	-	-	-	10	10	10	-	-	-
Lithuania	-	-	-	10	-	-	-	-	-	-	20	-	-	10
Other Europe	-	70	-	10	-	-	-	10	30	30	-	-	-	20
<b>Asia</b>														
Japan	70	290	-	40	-	-	-	10	6,950	150	20	10	-	20
India	480	1,930	-	-	-	20	4	-	80	20	-	-	-	20
China	260	2,110	10	30	-	20	-	10	350	40	-	-	10	-
Korea	80	60	-	80	-	-	-	-	1,500	10	30	-	-	10

**Table 6: Total Arrivals by Country of Residence and Border Post - 2008 (cont'd)**

Country of Residence	Tlokweng gate	Sir Seretse khama Air	Parrshalt	Mamono	Sikwane	Ramotswa	Francis town air	Ramokgwe bana road	Kazungula road	Maun airport	Mohembo	Plaatjan	Pointdrift	Ngoma
<b>Asia</b>														
Israel	100	500	-	20	-	-	-	-	150	60	30	-	-	30
Singapore	50	140	-	-	-	-	1	-	150	50	10	-	-	-
Malaysia	70	250	-	30	-	-	-	-	-	-	-	-	-	-
Bangladesh	30	100	-	-	-	-	-	-	-	-	-	-	-	-
Sri lanka	40	200	-	10	-	-	-	-	20	10	-	-	-	-
Hong kong	30	30	-	10	-	-	-	-	60	70	-	-	10	20
Pakistan	90	120	-	-	-	-	-	-	-	10	-	-	-	-
Philippines	10	30	-	-	-	-	-	-	-	50	10	-	-	-
Turkey	10	40	-	10	-	-	-	-	20	-	20	-	-	20
Thailand	60	50	-	-	-	-	-	-	10	10	-	-	20	10
Taiwan	-	40	-	10	-	-	-	-	90	-	-	-	-	-
Indonesia	-	20	-	-	-	-	-	-	20	30	-	-	-	-
Lebanon	10	60	-	-	-	-	-	-	10	-	-	-	-	-
Cyprus	-	-	-	-	10	-	2	-	-	-	-	-	-	-
Saudi arabia	10	30	-	-	-	-	-	-	-	10	-	-	-	-
Other Asia	10	80	-	10	-	-	-	20	30	-	-	-	-	-
<b>Oceania</b>														
Fiji	-	20	-	-	-	-	-	-	-	-	-	-	-	-
Papua new guinea	10	-	-	-	-	-	-	-	-	-	-	-	-	-
Australia	320	840	20	770	-	20	99	290	2,660	1,390	850	130	130	410
New zealand	70	60	20	270	-	40	2	40	310	260	220	10	10	60
<b>Not Stated</b>	1,710	660	200	140	250	80	38	11,060	330	610	120	20	60	130
<b>Total</b>	<b>270,950</b>	<b>86,180</b>	<b>19,410</b>	<b>93,670</b>	<b>18,970</b>	<b>25,860</b>	<b>4,394</b>	<b>927,610</b>	<b>139,460</b>	<b>30,230</b>	<b>20,810</b>	<b>7,990</b>	<b>11,140</b>	<b>42,590</b>



**Table 6: Total Arrivals by Country of Residence and Border Post - 2008 (cont'd)**

Country of Residence	Selibe Phikwe air	Zanzibar	Makopong	Martins drift	Orapa	Panda matenge	Kazungula ferry	Kasane airport	Sowa Air	Phitshane molopo	Bray	Ramatla bama road	Pioneer gate	Jwaneng
<b>Africa</b>														
Zimbabwe	4	28	1	9,760	1	430	4,820	63	-	110	1	3,160	1,990	7
South Africa	235	2,368	678	91,900	222	309	14,620	648	624	11,100	2,702	93,130	79,980	99
Zambia	1	8	-	21,270	-	3	223,070	40	-	-	4	680	1,720	6
Botswana	86	663	96	14,850	50	30	9,860	898	167	980	991	14,900	14,860	26
Namibia	-	3	11	840	-	7	780	173	-	10	19	4,240	23,330	-
Lesotho	-	2	-	120	-	2	190	4	1	10	1	890	400	-
Malawi	-	1	1	350	-	-	850	3	-	-	-	280	320	-
Swaziland	-	-	-	430	-	-	140	8	-	-	3	110	420	-
Mozambique	-	6	-	160	-	-	530	6	-	-	1	100	250	-
Kenya	-	-	-	140	-	2	930	2	-	-	-	110	30	-
Tanzania	-	-	-	130	-	-	910	8	5	-	-	30	10	-
Uganda	-	-	-	10	-	-	660	6	-	-	-	60	40	-
DRC	-	-	-	130	-	-	390	-	-	-	-	10	10	-
Angola	-	-	-	10	-	-	70	38	-	-	-	-	-	-
Nigeria	-	-	-	10	-	-	40	2	-	-	-	20	10	-
Mauritius	-	-	-	40	-	-	20	1	-	-	-	40	40	-
Ghana	1	-	-	10	-	-	-	3	-	-	-	10	-	-
Ethiopia	-	-	-	-	-	-	-	1	-	-	-	-	-	-
Egypt	-	-	-	-	-	-	20	1	-	-	-	-	10	-
Madagascar	-	-	-	-	-	-	-	-	-	-	-	-	-	-
Rwanda	-	-	-	-	-	-	10	2	-	-	-	-	-	-
Gabon	-	-	-	10	-	-	-	-	-	-	-	-	10	-
Senegal	-	-	-	-	-	-	-	2	-	-	-	-	-	-
Cote d ivoire	-	-	-	-	-	-	-	-	-	-	-	10	-	-
Sierra leone	-	-	-	-	-	-	-	-	-	-	-	10	-	-
Sudan	-	-	-	-	-	-	-	-	-	-	-	-	-	-
Somalia	-	-	-	-	-	-	30	-	-	-	-	-	10	-
Seychelles	-	-	-	-	-	-	30	1	-	-	-	-	-	-
Tunisia	-	-	-	-	-	-	-	-	-	-	-	-	-	-
Cameroon	-	-	-	-	-	-	-	-	-	-	-	-	-	-
Libya	-	-	-	-	-	-	-	-	-	-	-	-	-	-
Other Africa	-	-	-	-	-	-	50	2	-	-	-	-	10	-

**Table 6: Total Arrivals by Country of Residence and Border Post - 2008 (cont'd)**

Country of Residence	Selibe Phikwe air	Zanzibar	Makopong	Martins drift	Orapa	Panda matenge	Kazungula ferry	Kasane airport	Sowa Air	Phitshane mologo	Bray	Ramatla bama road	Pioneer gate	Jwaneng
<b>America</b>														
USA	2	32	2	900	2	23	8,430	1,381	5	-	6	290	340	-
Canada	-	-	-	280	1	2	1,760	110	3	-	-	40	70	-
Mexico	-	-	-	10	-	-	150	53	-	-	-	-	20	-
Brazil	-	-	-	10	-	-	90	10	-	-	-	-	40	-
Argentina	-	-	-	-	-	-	30	4	-	-	-	10	-	-
Chile	-	-	-	-	-	-	10	5	-	-	-	-	-	-
Colombia	-	-	-	-	-	-	50	-	-	-	-	-	10	-
Cuba	-	-	-	-	-	1	-	-	-	-	-	-	-	-
Jamaica	-	-	-	-	-	-	10	2	-	-	-	-	-	-
Barbados	-	-	-	10	-	-	-	1	-	-	-	-	-	-
Venezuela	-	-	-	-	-	-	40	-	-	-	-	-	-	-
Other America	-	-	-	20	-	-	10	8	-	-	-	10	10	-
<b>Europe</b>														
United Kingdom	8	26	-	1,590	7	4	5,980	526	17	-	5	410	420	13
Germany	5	21	8	1,340	-	33	3,030	237	2	-	2	190	340	1
Netherlands	-	36	1	630	-	5	1,910	50	-	-	-	60	130	-
France	-	8	1	480	1	3	2,010	181	-	-	-	30	90	1
Italy	-	3	3	200	-	-	1,180	60	-	-	-	20	200	-
Spain	-	7	-	130	-	1	1,260	117	-	-	-	20	70	-
Switzerland	-	2	4	340	-	3	630	88	-	-	1	30	50	2
Belgiumluxenburg	-	4	-	150	-	9	520	43	-	-	-	20	40	1

**Table 6: Total Arrivals by Country of Residence and Border Post - 2008 (cont'd)**

Country of Residence	Selibe Phikwe air	Zanzibar	Makopong	Martins drift	Orapa	Panda matenge	Kazungula ferry	Kasane air	Sowa Airport	Phitshane molopo	Bray	Ramatla bama road	Pioneer gate	Jwaneng
<b>Europe</b>														
Ireland	-	1	-	90	-	2	750	9	-	-	-	20	20	-
Austria	-	-	-	120	-	6	310	13	-	-	-	-	40	-
Denmark	-	-	1	190	-	-	540	16	-	-	-	10	10	-
Russia	8	-	-	-	-	-	880	27	-	-	-	50	60	-
Norway	-	-	-	40	-	-	440	3	-	-	-	30	-	-
Sweden	-	1	-	40	1	3	350	19	-	-	-	10	70	-
Portugal	-	-	-	50	-	-	160	8	-	-	-	50	30	-
Czechoslovakia	-	-	-	30	-	2	60	2	-	-	-	10	-	-
Poland	-	-	-	40	-	-	80	8	-	-	-	10	10	-
Slovakia	-	-	-	-	-	-	80	-	-	-	-	-	-	-
Ukraine	-	-	-	-	-	-	70	5	-	-	-	-	-	-
Finland	-	1	-	10	-	-	90	1	-	-	-	20	-	-
Hungary	-	-	1	-	-	-	120	1	-	-	-	-	10	-
Greece	-	-	-	-	-	-	100	4	-	-	-	-	20	-
Luxembourg	-	-	-	10	-	-	40	4	-	-	-	-	-	1
Yugoslavia	-	-	-	-	-	-	20	-	-	-	-	-	-	-
Bulgaria	-	-	-	-	-	-	20	-	-	-	-	-	-	-
Croatia	-	-	-	-	-	-	20	1	-	-	-	-	-	-
Iceland	-	-	-	10	-	-	10	-	-	-	-	-	-	-
Estonia	-	-	-	-	-	-	20	1	-	-	-	10	-	-
Lithuania	-	-	-	-	-	-	20	-	-	-	-	-	-	-
Other Europe	-	-	-	10	-	-	30	1	-	-	-	10	-	-
<b>Asia</b>														
Japan	1	-	-	-	3	-	540	6	-	-	-	10	-	-
India	-	-	-	90	1	-	120	9	-	-	-	160	180	-
China	-	-	-	30	-	-	70	6	-	-	-	10	60	-
Korea	-	-	-	20	-	-	60	-	-	-	-	10	-	-
Israel	-	-	-	30	-	3	90	3	1	-	-	-	-	-
Singapore	-	-	-	30	-	-	90	14	-	-	-	-	-	-
Malaysia	-	-	-	-	-	-	50	-	-	-	-	-	-	-
Bangladesh	-	-	-	20	-	-	-	-	-	-	-	130	30	-
Sri lanka	-	-	-	-	-	-	10	2	-	-	-	10	-	-
Hong kong	-	-	-	20	-	-	-	9	-	-	-	-	10	-

**Table 6: Total Arrivals by Country of Residence and Border Post - 2008 (cont'd)**

Country of Residence	Selibe Phikwe air	Zanzibar	Makopong	Martins drift	Orapa	Panda matenge	Kazungula ferry	Kasane air	Sowa Airport	Phitshane molopo	Bray	Ramatla bama road	Pioneer gate	Jwaneng
<b>Asia</b>														
Pakistan	-	-	-	-	-	-	-	1	-	-	-	10	20	-
Philippines	-	-	-	30	-	-	20	12	-	-	-	10	10	-
Turkey	-	-	-	-	-	-	40	-	-	-	-	10	-	-
Thailand	-	-	-	-	-	-	-	2	-	-	-	-	-	-
Taiwan	-	-	-	-	-	-	20	-	-	-	-	-	-	-
Indonesia	-	-	-	20	-	-	20	-	-	-	-	-	-	-
Lebanon	-	-	-	-	-	-	-	2	-	-	-	-	-	-
Cyprus	-	-	-	30	-	-	10	-	-	-	-	-	-	-
Saudi arabia	-	-	-	-	-	-	-	1	-	-	-	-	-	-
Other Asia	-	-	-	-	-	-	10	-	-	-	-	10	10	-
<b>Oceania</b>														
Fiji	-	-	-	-	-	-	-	-	-	-	-	-	-	-
Papua new guinea	-	-	-	-	-	-	-	-	-	-	-	-	-	-
Australia	6	4	-	1,490	1	2	3,140	253	-	-	7	160	210	-
New zealand	-	5	-	160	-	-	770	45	-	-	-	10	20	-
<b>Not Stated</b>	2	3	1	440		5	500	33	3	70	2	1,050	890	3
<b>Total</b>	<b>359</b>	<b>3,233</b>	<b>809</b>	<b>149,310</b>	<b>290</b>	<b>890</b>	<b>294,890</b>	<b>5,309</b>	<b>828</b>	<b>12,280</b>	<b>3,745</b>	<b>120,740</b>	<b>126,990</b>	<b>160</b>

**Table 6: Total Arrivals by Country of Residence and Border Post - 2008 (cont'd)**

Country of Residence	Bokspits	Boshoek	Tsabong	Kasane	Ramokgwe bana rail	Maitengwe	Matsiloje	Middlepits	Two rivers	Limpopo valley	Dobe	Kwando	Shakawe	Total
<b>Africa</b>														
Zimbabwe	-	-	3	280	57,130	36,500	29,190	1	2	6	19	87	-	<b>1,027,177</b>
South Africa	1,774	103	5,046	2,100	730	5,840	15,280	2,402	1,250	387	90	4	6	<b>666,690</b>
Zambia	-	-	4	670	140	30	10	3	2	-	2	-	-	<b>278,335</b>
Botswana	190	10	382	360	1,110	760	1,390	279	56	5	25	-	-	<b>270,503</b>
Namibia	75	-	29	14,330	-	-	10	3	32	3	336	15	-	<b>115,219</b>
Lesotho	-	-	4	-	-	-	-	13	-	-	-	-	-	<b>7,427</b>
Malawi	1	-	-	10	110	-	30	-	-	-	-	-	-	<b>5,827</b>
Swaziland	-	-	1	-	-	10	30	-	-	1	1	-	-	<b>5,204</b>
Mozambique	-	-	1	-	40	-	30	-	2	-	-	-	-	<b>4,158</b>
Kenya	-	-	-	-	-	-	-	-	-	-	1	-	-	<b>3,066</b>
Tanzania	1	-	3	-	-	-	-	2	-	-	-	-	-	<b>2,429</b>
Uganda	-	-	-	10	-	-	-	-	-	-	-	-	-	<b>1,196</b>
DRC	-	-	-	-	-	-	-	-	-	-	-	-	-	<b>1,070</b>
Angola	-	-	-	-	-	-	-	-	-	-	2	-	-	<b>790</b>
Nigeria	-	-	-	-	-	-	-	-	-	-	-	-	-	<b>682</b>
Mauritius	-	-	-	-	-	-	-	-	-	-	-	-	-	<b>677</b>
Ghana	-	-	-	-	-	-	-	-	-	-	-	-	-	<b>366</b>
Ethiopia	-	-	-	-	-	-	-	-	-	-	-	-	-	<b>281</b>
Egypt	-	-	-	-	-	-	-	-	-	-	-	-	-	<b>241</b>
Madagascar	-	-	-	-	-	-	-	-	-	-	-	-	-	<b>150</b>
Rwanda	-	-	-	-	-	-	-	-	-	-	-	-	-	<b>102</b>
Gabon	-	-	2	-	-	-	-	-	-	-	-	-	-	<b>82</b>
Senegal	-	-	-	-	-	-	-	-	-	-	-	-	-	<b>72</b>
Cote d ivoire	-	-	-	-	-	-	-	-	-	-	-	-	-	<b>70</b>
Sierra leone	-	-	-	-	-	-	-	-	-	-	-	-	-	<b>70</b>
Sudan	-	-	-	-	-	-	-	-	-	-	-	-	-	<b>70</b>
Somalia	-	-	-	-	-	-	-	-	-	-	-	-	-	<b>70</b>
Seychelles	-	-	-	-	-	-	-	-	-	-	-	-	-	<b>61</b>
Tunisia	-	-	-	-	-	-	-	-	-	-	-	-	-	<b>60</b>
Cameroon	-	-	-	-	-	-	-	-	-	-	-	-	-	<b>60</b>
Libya	-	-	-	-	-	-	-	-	-	-	-	-	-	<b>50</b>
Other Africa	-	-	-	-	-	-	-	-	-	-	-	-	-	<b>453</b>

**Table 6: Total Arrivals by Country of Residence and Border Post - 2008 (cont'd)**

Country of Residence	Bokspits	Boshoek	Tsabong	Kasane	Ramokgwe bana rail	Maitengwe	Matsiloje	Middlepits	Two rivers	Limpopo valley	Dobe	Kwando	Shakawe	Total
<b>America</b>														
United States America	-	-	4	1,560	50	-	40	-	4	497	20	1,345	-	<b>42,413</b>
Canada	1	-	1	190	-	-	-	-	4	33	18	7	-	<b>6,664</b>
Mexico	-	-	-	10	-	-	-	-	-	5	-	-	-	<b>418</b>
Brazil	-	-	-	-	-	-	-	-	-	-	12	-	-	<b>412</b>
Argentina	-	-	-	10	-	-	-	-	-	-	-	-	-	<b>184</b>
Chile	-	-	-	-	-	-	-	-	-	-	1	-	-	<b>86</b>
Colombia	-	-	-	-	-	-	-	-	-	-	-	-	-	<b>80</b>
Cuba	-	-	-	-	-	-	-	-	-	-	-	-	-	<b>71</b>
Jamaica	-	-	-	-	-	-	-	-	-	-	-	-	-	<b>62</b>
Barbados	-	-	-	10	-	-	-	-	-	-	-	-	-	<b>51</b>
Venezuela	-	-	-	-	-	-	-	-	-	-	-	-	-	<b>50</b>
Other America	-	-	-	10	-	-	-	-	-	4	-	2	-	<b>244</b>
<b>Europe</b>														
United Kingdom	7	-	43	1,070	100	-	70	4	21	110	48	20	-	<b>28,419</b>
Germany	11	-	34	730	100	-	20	2	88	29	107	31	-	<b>23,280</b>
Netherlands	9	-	18	130	20	-	-	1	13	32	9	1	-	<b>11,519</b>
France	-	-	17	270	40	-	-	1	16	23	36	10	-	<b>9,390</b>
Italy	24	-	14	150	-	-	-	-	8	21	9	5	-	<b>5,730</b>
Spain	-	-	2	200	30	-	10	-	9	7	3	-	-	<b>5,646</b>
Switzerland	6	-	-	230	30	-	-	1	29	19	15	17	-	<b>5,172</b>
Belgiumluxenburg	-	-	5	90	-	-	-	-	10	13	12	-	-	<b>3,269</b>

**Table 6: Total Arrivals by Country of Residence and Border Post - 2008 (cont'd)**

Country of Residence	Bokspits	Boshoek	Tsabong	Kasane	Ramokgwe bana rail	Maitengwe	Matsiloje	Middle pits	Two rivers	Limpopo valley	Dobe	Kwando	Shakawe	Total
<b>Europe</b>														
Ireland	-	-	2	50	10	-	-	-	-	12	14	-	-	2,172
Austria	4	-	-	60	-	-	-	-	10	-	5	4	-	2,164
Denmark	1	-	-	180	20	-	-	-	-	9	2	-	-	2,149
Russia	-	-	-	90	10	-	-	-	-	7	-	-	-	1,886
Norway	-	-	-	30	-	-	-	-	-	-	-	-	-	1,766
Sweden	-	-	1	70	-	-	-	-	-	-	19	-	-	1,754
Portugal	-	-	1	-	-	-	-	-	-	-	-	1	-	740
Czechoslovakia	-	-	-	10	-	-	-	-	-	-	2	-	-	626
Poland	-	-	-	-	-	-	-	-	-	1	-	-	-	619
Slovakia	-	-	-	-	-	-	-	-	-	-	-	-	-	410
Ukraine	-	-	-	20	-	-	-	-	-	-	-	-	-	385
Finland	-	-	-	10	30	-	-	-	-	-	1	-	-	384
Hungary	-	-	-	-	-	-	-	-	-	-	-	-	-	272
Greece	-	-	-	-	-	-	-	-	-	2	2	-	-	239
Luxembourg	-	-	-	10	-	-	-	-	-	2	-	-	-	187
Yugoslavia	-	-	-	-	-	-	-	-	-	-	-	-	-	102
Bulgaria	-	-	-	-	-	-	-	-	-	-	-	-	-	100
Croatia	-	-	-	-	-	-	-	-	-	-	-	-	-	81
Iceland	-	-	-	-	-	-	-	-	-	-	-	-	-	80
Estonia	-	-	-	-	-	-	-	-	-	-	-	-	-	61
Lithuania	-	-	-	-	-	-	-	-	-	-	-	-	-	60
Other Europe	-	-	-	-	-	-	-	-	-	-	-	-	-	221
<b>Asia</b>														
Japan	-	-	-	40	10	-	-	-	-	-	-	-	-	8,170
India	1	-	2	-	-	-	-	-	-	1	-	-	-	3,118
China	-	-	-	-	10	-	-	-	-	1	-	-	-	3,027
Korea	-	-	-	10	-	-	-	-	-	-	-	-	-	1,870
Israel	-	-	-	20	-	-	-	-	-	-	5	-	-	1,042
Singapore	-	-	-	-	-	-	-	-	-	2	-	-	-	537
Malaysia	-	-	-	-	-	-	-	-	-	-	-	-	-	400

**Table 6: Total Arrivals by Country of Residence and Border Post - 2008 (cont'd)**

Country of Residence	Bokspits	Boshoek	Tsabong	Kasane	Ramokgwe bana rail	Maitengwe	Matsiloje	Middle pits	Two rivers	Limpopo valley	Dobe	Kwando	Shakawe	Total
<b>Asia</b>														
Bangladesh	-	-	-	-	-	-	-	-	-	-	-	-	-	310
Sri lanka	-	-	-	-	-	-	-	-	-	-	-	-	-	302
Hong kong	-	-	-	-	-	-	-	-	-	-	-	-	-	269
Pakistan	-	-	2	-	-	-	-	-	-	-	-	-	-	253
Philippines	-	-	-	-	-	-	-	-	-	-	-	-	-	182
Turkey	-	-	-	-	-	-	-	-	-	-	-	-	-	170
Thailand	-	-	-	-	-	-	-	-	-	-	-	1	-	163
Taiwan	-	-	-	-	-	-	-	-	-	-	-	-	-	160
Indonesia	-	-	-	-	-	-	-	-	-	-	-	-	-	110
Lebanon	-	-	1	-	-	-	-	-	-	-	-	-	-	83
Cyprus	-	-	-	-	-	-	-	-	-	-	-	-	-	52
Saudi arabia	-	-	-	-	-	-	-	-	-	-	-	-	-	51
Other Asia	-	-	-	-	-	-	-	-	-	-	1	1	-	182
<b>Oceania</b>														
Fiji	-	-	-	-	-	-	-	-	-	-	-	-	-	20
Papua new guinea	-	-	-	-	-	-	-	-	-	-	-	-	-	10
Australia	-	-	-	300	20	-	-	-	2	13	9	1	-	13,547
New zealand	-	-	3	70	10	-	-	-	1	2	10	1	-	2,479
<b>Not Stated</b>	43	1	44	110	80	590	720	8	11	-	31	5	-	20,053
<b>Total</b>	<b>2,148</b>	<b>114</b>	<b>5,669</b>	<b>23,500</b>	<b>59,830</b>	<b>43,730</b>	<b>46,830</b>	<b>2,720</b>	<b>1,570</b>	<b>1,247</b>	<b>867</b>	<b>1,558</b>	<b>6</b>	<b>2,608,886</b>



**Table 7: Arrivals by Border Post and Month of Arrivals - 2008**

<b>Border Post</b>	<b>January</b>	<b>February</b>	<b>March</b>	<b>April</b>	<b>May</b>	<b>June</b>	<b>July</b>	<b>August</b>	<b>September</b>	<b>October</b>	<b>November</b>	<b>December</b>	<b>Total</b>
Ramokgwebana road	40,310	61,390	60,520	75,760	78,320	66,920	85,950	78,320	86,860	93,790	89,620	109,850	<b>927,610</b>
Kazungula ferry	20,690	19,260	22,860	27,740	29,160	25,170	29,660	27,960	24,720	23,760	21,690	22,220	<b>294,890</b>
Tlokweng gate	18,760	21,030	23,040	21,650	21,240	21,730	22,860	22,820	22,160	23,200	22,910	29,550	<b>270,950</b>
Martinsdrift	9,210	6,090	13,460	14,100	11,350	13,240	12,720	14,030	12,390	11,170	10,640	20,910	<b>149,310</b>
Kazungula road	9,460	8,920	10,300	10,960	11,380	10,740	12,680	13,970	12,560	14,340	11,560	12,590	<b>139,460</b>
Pioneer gate	8,510	8,670	11,710	10,490	9,830	11,490	10,820	10,530	10,030	9,740	10,020	15,150	<b>126,990</b>
Ramatlabama road	8,010	8,540	9,900	9,620	9,420	9,470	9,220	10,270	9,820	10,470	10,350	15,650	<b>120,740</b>
Mamono	8,320	5,380	7,870	8,320	7,040	6,550	8,700	8,550	7,180	7,820	7,460	10,480	<b>93,670</b>
Matsiloje	4,140	2,240	3,220	3,520	3,890	3,240	3,800	4,420	3,890	3,930	3,450	7,090	<b>46,830</b>
Maitengwe	3,700	2,370	4,530	2,710	3,290	3,230	3,850	4,150	4,190	4,300	3,160	4,250	<b>43,730</b>
Ngoma	2,640	1,890	2,590	2,930	3,330	3,320	4,800	5,210	4,060	3,950	3,390	4,480	<b>42,590</b>
Ramotswa	2,130	2,040	2,150	2,040	2,130	2,310	2,210	1,760	2,290	1,980	1,890	2,930	<b>25,860</b>
Kasane	1,500	1,550	1,780	1,850	1,880	1,930	2,340	2,460	2,280	2,150	1,880	1,900	<b>23,500</b>
Mohembo	1,300	-	1,170	1,330	1,570	1,300	2,740	3,100	2,300	2,350	1,880	1,770	<b>20,810</b>
Parrshalt	800	950	1,670	1,660	1,410	1,980	1,440	1,500	1,370	1,310	1,030	4,290	<b>19,410</b>
Sikwane	1,440	1,210	1,630	1,440	1,380	1,410	980	1,560	2,390	1,510	1,370	2,650	<b>18,970</b>
Phitshanemolopo	460	320	450	640	670	520	440	530	5,940	610	730	970	<b>12,280</b>
Pointdrift	1,440	630	870	660	1,440	670	850	1,270	910	930	720	750	<b>11,140</b>
Plaatjan	680	670	660	810	680	670	670	640	680	530	470	830	<b>7,990</b>
Tshabobg	351	369	608	763	53	515	385	597	562	434	366	666	<b>5,669</b>
Bray	280	305	406	350	289	379	306	300	397	328	223	182	<b>3,745</b>
Zanzibar	71	21	181	160	231	418	332	418	360	368	213	460	<b>3,233</b>
Middlepits	218	166	235	227	189	197	228	228	347	235	55	395	<b>2,720</b>
Bokspits	161	121	221	225	158	162	249	164	207	191	50	239	<b>2,148</b>
Two rivers	142	74	142	122	129	214	131	167	142	99	63	145	<b>1,570</b>
Kwando	-	-	-	-	-	-	340	301	338	333	215	31	<b>1,558</b>
Pandamatenge	78	34	75	75	77	32	105	68	95	94	78	79	<b>890</b>
Dobe	58	-	112	112	77	101	101	148	25	55	78	-	<b>867</b>
Makopong	59	75	60	59	119	75	63	76	78	47	28	70	<b>809</b>
Boshoek	26	47	7	4	6	24	-	-	-	-	-	-	<b>114</b>

**Table 7: Arrivals by Border Post and Month of Arrivals – 2008 (cont'd)**

<b>Border Post</b>	<b>January</b>	<b>February</b>	<b>March</b>	<b>April</b>	<b>May</b>	<b>June</b>	<b>July</b>	<b>August</b>	<b>September</b>	<b>October</b>	<b>November</b>	<b>December</b>	<b>Total</b>
Sir Seretse khama Air	6,520	6,780	7,380	7,000	7,230	7,630	7,680	7,520	7,790	7,950	7,380	5,320	<b>86,180</b>
Maun airport	3,000	1,340	2,070	2,510	3,000	3,090	3,240	2,010	3,230	2,880	2,270	1,590	<b>30,230</b>
Kasane airport	266	335	659	-	661	769	58	741	741	506	310	263	<b>5,309</b>
Francistown airport	369	474	191	539	499	474	473	331	330	312	257	145	<b>4,394</b>
Limpopo valley	58	37	114	55	146	118	165	211	120	131	38	54	<b>1,247</b>
Sowa Airport	44	54	90	75	83	65	61	69	75	88	67	57	<b>828</b>
Selibephikwe airport	12	24	35	39	49	19	19	50	69	16	20	7	<b>359</b>
Orapa	29	32	27	12	42	21	35	47	16	19	-	10	<b>290</b>
Jwaneng	18	21	3	16	24	2	14	19	16	5	22	-	<b>160</b>
Shakawe	-	-	-	-	-	-	-	-	-	-	6	-	<b>6</b>
Ramokgwebana rail	6,810	6,630	3,320	6,790	7,060	-	5,940	3,870	4,350	5,760	4,960	4,340	<b>59,830</b>
<b>Total</b>	<b>162,070</b>	<b>170,089</b>	<b>196,316</b>	<b>217,363</b>	<b>219,532</b>	<b>200,195</b>	<b>236,655</b>	<b>230,385</b>	<b>235,308</b>	<b>237,691</b>	<b>220,919</b>	<b>282,363</b>	<b>2,608,886</b>

**Table 8: Total Arrivals by Month of Arrivals and Mode of Travel - 2008**

<b>Month of arrivals</b>	<b>Rail</b>	<b>Road</b>	<b>Air</b>	<b>Other</b>	<b>Total</b>
January	6,870	144,803	10,327	70	<b>162,070</b>
February	6,640	154,343	9,096	10	<b>170,089</b>
March	3,372	182,297	10,646	1	<b>196,316</b>
April	6,930	200,055	10,368	10	<b>217,363</b>
May	7,140	200,574	11,808	10	<b>219,532</b>
June	41	187,894	12,260	-	<b>200,195</b>
July	5,940	218,970	11,745	-	<b>236,655</b>
August	3,920	215,467	10,998	-	<b>230,385</b>
September	4,370	218,187	12,495	256	<b>235,308</b>
October	5,780	219,439	12,182	290	<b>237,691</b>
November	5,001	205,533	10,385	-	<b>220,919</b>
December	4,360	270,556	7,447	-	<b>282,363</b>
<b>Total</b>	<b>60,364</b>	<b>2,418,118</b>	<b>129,757</b>	<b>647</b>	<b>2,608,886</b>

**Table 9: Total Arrivals by Age Group and Sex - 2008**

<b>Age Group</b>	<b>Male</b>	<b>Female</b>	<b>Total</b>
0-4	1,618	1,099	<b>2,717</b>
5-9	984	716	<b>1,700</b>
10-14	3,229	2,920	<b>6,149</b>
15-19	29,925	27,939	<b>57,864</b>
20-24	137,586	119,915	<b>257,501</b>
25-29	245,514	201,546	<b>447,060</b>
30-34	261,955	185,893	<b>447,848</b>
35-39	239,255	153,061	<b>392,316</b>
40-44	184,675	111,564	<b>296,239</b>
45-49	137,039	82,442	<b>219,481</b>
50-54	113,274	65,667	<b>178,941</b>
55-59	77,162	42,955	<b>120,117</b>
60-64	47,565	30,906	<b>78,471</b>
65+	52,225	38,766	<b>90,991</b>
Not Stated	6,940	4,551	<b>11,491</b>
<b>Total</b>	<b>1,538,946</b>	<b>1,069,940</b>	<b>2,608,886</b>

**Table 10: Total Arrivals by Country of Residence and Age Group - 2008**

Country of Residence	0-4	5-9	10-14	15-19	20-24	25-29	30-34	35-39	40-44	45-49	50-54	55-59	60-64	65+	Not Stated	Total
<b>Africa</b>																
Zimbabwe	960	220	1,071	19,541	142,751	244,514	208,287	161,688	97,005	57,781	42,128	21,786	12,081	12,970	4,394	<b>1,027,177</b>
South Africa	1,075	1,043	2,282	15,558	41,581	65,980	85,914	93,500	92,323	79,889	69,710	50,571	30,481	33,621	3,162	<b>666,690</b>
Zambia	90	70	420	5,472	31,583	65,728	64,286	47,140	26,935	17,043	9,730	4,268	1,959	2,131	1,480	<b>278,335</b>
Botswana	272	140	791	5,562	10,269	27,016	44,691	51,413	42,358	30,730	25,939	15,401	8,684	6,356	881	<b>270,503</b>
Namibia	63	92	581	4,351	12,554	16,572	16,656	15,354	15,431	12,311	8,218	5,818	2,934	3,724	560	<b>115,219</b>
Lesotho	40	-	-	380	1,551	1,290	1,223	956	677	376	434	210	130	120	40	<b>7,427</b>
Malawi	-	10	30	160	530	961	940	790	841	521	512	202	90	220	20	<b>5,827</b>
Swaziland	-	-	30	200	790	880	890	802	603	391	306	201	40	41	30	<b>5,204</b>
Mozambique	-	-	10	100	280	520	791	817	504	510	321	94	71	100	40	<b>4,158</b>
Kenya	-	-	30	120	200	461	581	490	360	400	172	122	70	30	30	<b>3,066</b>
Tanzania	-	-	-	61	141	350	483	356	291	210	292	115	100	20	10	<b>2,429</b>
Uganda	-	-	-	20	190	310	280	80	101	81	94	10	-	-	30	<b>1,196</b>
DRC	-	-	-	20	40	90	160	190	170	120	140	80	30	30	-	<b>1,070</b>
Angola	-	10	20	20	21	24	87	106	178	136	45	102	21	10	10	<b>790</b>
Nigeria	-	-	-	10	10	110	80	120	120	70	60	42	40	20	-	<b>682</b>
Mauritius	-	-	10	10	20	90	50	36	100	140	80	101	10	30	-	<b>677</b>
Ghana	-	-	10	30	30	20	41	40	71	50	52	-	11	11	-	<b>366</b>
Ethiopia	-	-	-	-	20	20	10	40	40	40	-	41	60	10	-	<b>281</b>
Egypt	-	-	-	20	30	40	50	20	20	-	20	11	20	10	-	<b>241</b>
Madagascar	-	-	-	-	10	10	-	20	30	20	50	10	-	-	-	<b>150</b>
Rwanda	-	-	-	-	-	-	11	20	20	20	31	-	-	-	-	<b>102</b>

**Table 10: Total Arrivals by Country of Residence and Age Group – 2008 (cont'd)**

<b>Country of Residence</b>	<b>0-4</b>	<b>5-9</b>	<b>10-14</b>	<b>15-19</b>	<b>20-24</b>	<b>25-29</b>	<b>30-34</b>	<b>35-39</b>	<b>40-44</b>	<b>45-49</b>	<b>50-54</b>	<b>55-59</b>	<b>60-64</b>	<b>65+</b>	<b>Not Stated</b>	<b>Total</b>
<b>Africa</b>																
Gabon	-	-	-	30	-	20	10	10	10	2	-	-	-	-	-	<b>82</b>
Senegal	-	-	-	-	-	20	20	-	10	11	1	-	-	10	-	<b>72</b>
Cote d ivoire	-	-	-	-	-	-	10	20	10	10	10	10	-	-	-	<b>70</b>
Sierra leone	-	-	-	-	-	10	10	-	30	10	10	-	-	-	-	<b>70</b>
Sudan	-	-	-	-	-	10	-	30	10	10	10	-	-	-	-	<b>70</b>
Somalia	-	-	-	-	-	-	10	10	10	10	10	-	10	-	10	<b>70</b>
Seychelles	-	-	-	-	20	-	10	10	10	11	-	-	-	-	-	<b>61</b>
Tunisia	-	-	-	-	-	-	10	-	10	-	10	20	10	-	-	<b>60</b>
Cameroon	-	-	-	-	-	10	20	-	20	10	-	-	-	-	-	<b>60</b>
Libya	-	-	-	-	-	10	10	10	-	20	-	-	-	-	-	<b>50</b>
Other Africa	-	-	-	20	30	50	70	50	60	60	51	42	10	10	-	<b>453</b>
<b>America</b>																
USA	42	1	189	1,564	3,237	2,773	2,490	2,108	2,242	3,027	3,834	4,394	6,005	10,311	196	<b>42,413</b>
Canada	20	-	11	309	554	538	600	308	348	508	586	789	776	1,296	21	<b>6,664</b>
Mexico	-	-	-	1	43	72	54	25	72	63	14	27	35	2	10	<b>418</b>
Brazil	-	-	-	1	51	54	43	32	74	41	62	24	10	10	10	<b>412</b>
Argentina	-	-	-	10	20	30	50	1	-	1	30	10	21	11	-	<b>184</b>
Chile	-	-	-	-	10	1	10	21	11	-	-	-	10	23	-	<b>86</b>
Colombia	-	-	-	-	10	-	10	10	10	-	-	20	10	10	-	<b>80</b>
Cuba	-	-	-	-	-	10	-	-	-	21	-	30	10	-	-	<b>71</b>
Jamaica	-	-	-	-	10	-	10	-	-	10	10	-	2	20	-	<b>62</b>
Barbados	-	-	-	-	-	-	10	-	-	-	-	20	10	11	-	<b>51</b>

**Table 10: Total Arrivals by Country of Residence and Age Group – 2008 (cont'd).**

<b>Country of Residence</b>	<b>0-4</b>	<b>5-9</b>	<b>10-14</b>	<b>15-19</b>	<b>20-24</b>	<b>25-29</b>	<b>30-34</b>	<b>35-39</b>	<b>40-44</b>	<b>45-49</b>	<b>50-54</b>	<b>55-59</b>	<b>60-64</b>	<b>65+</b>	<b>Not Stated</b>	<b>Total</b>
<b>America</b>																
Venezuela	-	-	-	-	-	-	-	-	20	10	-	20	-	-	-	<b>50</b>
Other America	-	10	-	-	11	53	11	10	23	21	20	63	10	12	-	<b>244</b>
<b>Europe</b>																
United Kingdom	10	10	101	1,490	2,354	3,367	2,638	2,761	2,234	2,501	2,506	2,524	2,928	2,942	53	<b>28,419</b>
Germany	-	-	31	287	745	1,534	1,967	1,790	2,376	2,422	2,761	2,728	2,222	4,375	42	<b>23,280</b>
Netherlands	-	40	84	378	884	1,298	1,387	888	859	887	927	1,479	1,219	1,118	71	<b>11,519</b>
France	-	11	1	277	369	807	867	801	858	1,087	1,133	1,033	990	1,154	2	<b>9,390</b>
Italy	-	1	30	54	92	485	1,025	713	642	508	697	590	309	583	1	<b>5,730</b>
Spain	-	-	72	27	135	403	899	845	804	735	676	327	336	376	11	<b>5,646</b>
Switzerland	10	-	-	135	305	519	532	363	460	505	564	410	571	797	1	<b>5,172</b>
Belgiumluxenburg	-	-	30	92	136	382	303	304	214	582	365	339	261	240	21	<b>3,269</b>
Ireland	1	-	-	170	183	536	290	171	102	145	185	124	93	172	-	<b>2,172</b>
Austria	-	-	20	41	83	211	135	162	171	227	267	339	234	274	-	<b>2,164</b>
Denmark	-	10	20	80	161	245	151	131	121	134	213	237	295	331	20	<b>2,149</b>
Russia	10	1	33	42	132	226	248	307	229	325	199	82	21	31	-	<b>1,886</b>
Norway	-	-	-	80	360	260	141	80	162	112	141	140	200	90	-	<b>1,766</b>
Sweden	-	-	11	42	139	192	173	151	202	122	155	193	228	136	10	<b>1,754</b>
Portugal	-	-	-	-	40	52	73	81	80	70	171	92	30	41	10	<b>740</b>
Czechoslovakia	-	-	-	-	10	90	110	51	81	80	51	61	52	40	-	<b>626</b>
Poland	-	-	10	21	10	33	81	72	101	31	90	70	70	30	-	<b>619</b>
Slovakia	-	-	30	10	20	80	50	20	40	30	40	50	20	20	-	<b>410</b>
Ukraine	-	-	-	10	20	11	51	30	83	50	80	20	30	-	-	<b>385</b>

**Table 10: Total Arrivals by Country of Residence and Age Group – 2008 (cont'd).**

Country of Residence	0-4	5-9	10-14	15-19	20-24	25-29	30-34	35-39	40-44	45-49	50-54	55-59	60-64	65+	Not Stated	Total
<b>Europe</b>																
Finland				20	10	60	41	30	40	41	31	30	51	30	-	<b>384</b>
Hungary	-	-	-	-	10	21	60	41	40	10	30	40	10	10	-	<b>272</b>
Greece	-	-	10	-	-	21	22	30	51	11	13	11	10	50	10	<b>239</b>
Luxembourg	-	-	-	10	20	30	10	-	2	31	22	31	11	20	-	<b>187</b>
Yugoslavia	-	-	10	-	10	-	20	10	10	2	20	10	10	-	-	<b>102</b>
Bulgaria	-	-	-	-	-	10	40	-	10	-	-	20	10	10	-	<b>100</b>
Croatia	-	-	-	-	10	20	20	-	-	-	20	10	1	-	-	<b>81</b>
Iceland	-	-	-	-	40	10	-	10	-	-	-	10	-	10	-	<b>80</b>
Estonia	-	-	-	-	-	11	-	10	-	-	10	10	20	-	-	<b>61</b>
Lithuania	-	-	-	-	-	-	-	20	10	-	10	-	20	-	-	<b>60</b>
Other Europe	-	-	-	-	-	40	20	30	40	30	20	11	30	-	-	<b>221</b>
<b>Asia</b>																
Japan	10	-	30	40	131	600	710	531	400	252	292	763	1,351	3,010	50	<b>8,170</b>
India	10	-	10	20	240	502	465	335	402	231	261	220	162	250	10	<b>3,118</b>
China	10	10	50	70	270	342	492	502	471	350	230	100	40	60	30	<b>3,027</b>
Korea	-	-	-	30	130	150	140	90	70	160	300	290	200	290	20	<b>1,870</b>
Israel	-	-	10	50	50	61	111	54	93	110	170	91	130	112	-	<b>1,042</b>
Singapore	-	10	-	22	11	51	62	113	82	51	71	53	1	10	-	<b>537</b>
Malaysia	-	-	-	-	20	80	30	80	10	40	60	20	50	10	-	<b>400</b>
Bangladesh	-	-	-	-	30	70	70	30	80	10	-	10	-	10	-	<b>310</b>
Sri lanka	-	-	-	10	10	50	60	40	42	50	10	-	20	10	-	<b>302</b>
Hong kong	-	-	-	22	1	12	31	80	30	20	43	10	-	20	-	<b>269</b>

**Table 10: Total Arrivals by Country of Residence and Age Group – 2008 (cont'd).**

Country of Residence	0-4	5-9	10-14	15-19	20-24	25-29	30-34	35-39	40-44	45-49	50-54	55-59	60-64	65+	Not Stated	Total
<b>Asia</b>																
Pakistan	-	-	-	-	41	21	41	30	60	-	30	-	-	30	-	<b>253</b>
Philippines	-	-	-	30	2	32	2	30	10	42	12	22	-	-	-	<b>182</b>
Turkey	-	-	-	-	20	-	20	-	30	10	30	10	20	20	10	<b>170</b>
Thailand	-	-	-	-	-	20	31	30	10	20	30	11	10	1	-	<b>163</b>
Taiwan	-	-	-	-	-	-	20	-	-	20	40	30	20	30	-	<b>160</b>
Indonesia	-	-	-	-	-	-	10	10	-	20	20	10	20	20	-	<b>110</b>
Lebanon	-	-	-	-	11	20	11	1	-	10	10	20	-	-	-	<b>83</b>
Cyprus	-	-	-	-	10	-	-	-	-	10	20	-	2	10	-	<b>52</b>
Saudi arabia	-	-	-	-	-	10	-	10	-	1	20	-	-	10	-	<b>51</b>
Other Asia	-	-	-	-	10	-	50	30	20	20	-	20	11	21	-	<b>182</b>
<b>Oceania</b>																
Australia	1	1	30	285	1,233	1,877	1,481	993	778	1,080	1,343	1,370	1,432	1,631	12	<b>13,547</b>
New zealand	-	-	10	42	215	379	248	156	145	100	189	355	271	369	-	<b>2,479</b>
Fiji	-	-	-	-	-	-	-	10	-	-	-	10	-	-	-	<b>20</b>
Papua new guinea	-	-	-	-	-	-	-	-	10	-	-	-	-	-	-	<b>10</b>
<b>Not Stated</b>																<b>20,053</b>
<b>Total</b>	<b>93</b>	<b>10</b>	<b>31</b>	<b>407</b>	<b>2,191</b>	<b>3,182</b>	<b>3,430</b>	<b>2,626</b>	<b>2,316</b>	<b>1,501</b>	<b>1,371</b>	<b>1,027</b>	<b>688</b>	<b>1,007</b>	<b>173</b>	<b>2,608,886</b>



**Table 11: Total Arrivals by Nationality and Age Group - 2008**

<b>Nationality</b>	<b>0-4</b>	<b>5-9</b>	<b>10-14</b>	<b>15-19</b>	<b>20-24</b>	<b>25-29</b>	<b>30-34</b>	<b>35-39</b>	<b>40-44</b>	<b>45-49</b>	<b>50-54</b>	<b>55-59</b>	<b>60-64</b>	<b>65+</b>	<b>Total</b>	
<b>Africa</b>																
Zimbabwe	1,130	220	1,212	20,969	147,679	261,736	237,600	194,568	119,779	70,548	51,489	25,490	12,664	12,060	5,014	<b>1,162,158</b>
South Africa	1,178	1,113	2,501	16,995	42,504	68,536	89,912	98,364	98,741	85,981	75,701	53,527	32,928	34,940	3,247	<b>706,168</b>
Zambia	90	70	490	6,111	32,503	67,570	66,847	50,255	29,707	18,996	10,879	5,004	2,023	2,001	1,500	<b>294,046</b>
Namibia	63	102	591	4,315	12,652	16,363	15,908	14,317	14,492	11,650	7,816	5,369	2,560	3,476	499	<b>110,173</b>
Malawi	-	10	40	310	1,190	1,943	2,791	2,351	2,222	1,271	1,073	491	250	340	40	<b>14,322</b>
Lesotho	40	-	10	481	1,661	1,551	1,452	1,307	956	499	395	302	151	140	51	<b>8,996</b>
Kenya	-	-	70	260	390	816	1,382	1,514	1,041	1,030	342	242	70	60	81	<b>7,298</b>
Mozambique	-	-	10	120	470	847	1,361	1,219	796	760	552	213	91	131	41	<b>6,611</b>
Swaziland	-	-	20	220	960	920	1,010	871	692	432	324	181	40	60	30	<b>5,760</b>
Tanzania	-	-	50	152	381	550	653	724	493	520	591	358	200	41	10	<b>4,723</b>
Nigeria	10	-	10	90	170	200	520	600	650	430	290	120	90	60	-	<b>3,240</b>
Uganda	-	10	-	50	320	520	470	301	370	141	204	120	20	20	20	<b>2,566</b>
DRC	-	-	-	40	70	191	391	371	470	180	130	80	40	40	-	<b>2,003</b>
Mauritius	-	-	10	30	90	260	170	150	237	421	240	131	40	50	-	<b>1,829</b>
Ghana	-	-	20	70	50	80	133	130	201	140	132	350	41	12	-	<b>1,359</b>
Botswana	10	-	20	60	70	81	184	140	116	172	123	70	47	71	1	<b>1,165</b>
Angola	-	10	10	10	30	43	124	94	206	186	61	132	10	20	10	<b>946</b>
Ethiopia	-	-	-	20	20	70	80	130	110	100	50	51	40	20	-	<b>691</b>
Egypt	-	-	-	20	50	110	150	60	100	50	20	31	40	-	-	<b>631</b>
Cameroon	-	-	-	10	-	50	50	30	81	30	70	-	-	-	-	<b>321</b>
Sierra leone	-	-	-	10	-	20	30	30	30	20	30	10	10	-	-	<b>190</b>
Madagascar	-	-	-	-	10	20	10	30	30	10	60	10	-	-	-	<b>180</b>
Somalia	-	-	10	-	-	10	50	10	20	30	-	-	10	-	10	<b>150</b>
Eritrea	-	-	-	-	20	10	20	20	40	-	10	11	10	-	-	<b>141</b>
Rwanda	-	-	-	-	10	-	21	20	20	20	31	10	-	-	-	<b>132</b>
Libya	-	-	-	-	-	20	10	41	-	20	10	-	-	-	-	<b>101</b>
Senegal	-	-	-	10	-	20	20	-	20	10	1	10	-	10	-	<b>101</b>
Sudan	-	-	-	-	-	-	10	30	10	10	20	-	-	-	-	<b>80</b>
Burkina faso	-	-	-	-	-	-	20	-	30	10	10	-	-	-	-	<b>70</b>
Cote d ivoire	-	-	-	-	-	-	10	20	11	-	10	10	-	-	-	<b>61</b>
Sychelles	-	-	-	-	10	10	20	-	20	1	-	-	-	-	-	<b>61</b>
Gambia	-	-	-	10	-	10	30	-	10	-	-	-	-	-	-	<b>60</b>
Guinea	-	-	-	-	-	-	10	-	20	10	10	10	-	-	-	<b>60</b>
Gabon	-	-	-	30	-	10	10	-	-	-	-	-	-	-	-	<b>50</b>
Reunion	-	-	-	10	10	-	10	10	10	-	-	-	-	-	-	<b>50</b>

**Table 11: Total Arrivals by Nationality and Age Group – 2008 (cont'd)**

<b>Nationality</b>	<b>0-4</b>	<b>5-9</b>	<b>10-14</b>	<b>15-19</b>	<b>20-24</b>	<b>25-29</b>	<b>30-34</b>	<b>35-39</b>	<b>40-44</b>	<b>45-49</b>	<b>50-54</b>	<b>55-59</b>	<b>60-64</b>	<b>65+</b>	<b>Not Stated</b>	<b>Total</b>
<b>Other Africa</b>	-	-	-	30	30	60	40	111	130	210	222	30	10	10	-	<b>883</b>
<b>America</b>																
USA	42	21	199	1,728	3,906	3,051	2,853	2,357	2,765	3,502	4,291	4,908	6,247	10,632	227	<b>46,729</b>
Canada	20	-	11	379	596	675	724	369	514	692	698	902	872	1,278	11	<b>7,741</b>
Brazil	-	-	10	11	61	54	105	92	96	71	82	24	20	10	-	<b>636</b>
Mexico	-	-	-	1	53	63	55	24	71	72	14	37	35	2	10	<b>437</b>
Argentina	-	-	-	10	30	30	60	10	31	11	50	30	21	11	-	<b>294</b>
Cuba	-	-	-	-	-	10	10	70	20	40	20	30	20	-	-	<b>220</b>
Jamaica	-	-	-	-	20	30	20	30	40	-	30	10	2	20	-	<b>202</b>
Colombia	-	-	-	-	10	-	10	20	30	10	10	20	10	10	-	<b>130</b>
Trinidad	-	-	-	-	20	-	10	20	-	-	20	10	10	20	-	<b>110</b>
Chile	-	-	-	-	-	12	10	21	12	-	-	-	10	20	-	<b>85</b>
Barbados	-	-	-	-	-	-	10	-	-	20	20	10	20	-	-	<b>80</b>
Belize	-	-	-	-	-	-	1	20	-	1	10	10	-	10	-	<b>52</b>
Other America	-	11	-	-	21	82	11	30	42	61	-	80	11	-	10	<b>359</b>
<b>Europe</b>																
United Kingdom	40	10	123	1,850	2,734	3,769	3,269	4,349	4,357	5,115	5,897	6,092	5,942	6,568	99	<b>50,214</b>
Germany	-	-	52	468	1,045	1,707	2,313	2,322	3,003	2,803	3,381	3,331	2,722	5,192	73	<b>28,412</b>
Netherlands	-	41	93	420	985	1,481	1,559	1,009	1,071	1,092	1,275	1,683	1,429	1,461	72	<b>13,671</b>
France	-	10	1	316	391	1,063	1,095	1,076	979	1,335	1,323	1,087	1,121	1,272	3	<b>11,072</b>
Italy	-	1	30	64	143	557	1,106	839	833	610	810	750	482	703	1	<b>6,929</b>
Spain	-	-	72	37	126	493	918	785	814	749	708	347	367	268	21	<b>5,705</b>
Switzerland	-	-	-	85	317	510	483	313	461	565	622	456	571	806	1	<b>5,190</b>
Belgiumluxenburg	-	-	30	94	206	381	395	424	291	664	589	392	317	290	41	<b>4,114</b>
Ireland	1	-	10	210	245	608	491	334	144	385	414	316	184	349	21	<b>3,712</b>
Austria	-	-	20	42	118	241	176	183	194	269	339	430	311	356	-	<b>2,679</b>
Denmark	-	10	20	110	181	266	228	182	173	145	275	297	375	394	20	<b>2,676</b>
Sweden	-	-	11	52	159	242	214	201	333	174	185	275	249	167	20	<b>2,282</b>
Russia	10	1	33	42	122	236	268	347	237	356	198	192	101	51	-	<b>2,194</b>
Norway	-	-	-	80	410	310	161	111	181	173	192	130	230	100	-	<b>2,078</b>
Portugal	-	-	10	40	80	123	238	184	163	250	356	285	115	140	20	<b>2,004</b>
Poland	-	-	10	21	20	53	102	122	102	71	114	70	102	80	-	<b>867</b>
Yugoslavia	-	-	10	10	31	40	80	180	120	112	130	30	30	-	-	<b>773</b>
Czechoslovakia	-	-	-	-	10	100	140	31	71	100	63	70	61	40	-	<b>686</b>
Finland	-	-	-	20	21	60	62	51	51	61	51	30	31	50	-	<b>488</b>

**Table 11: Total Arrivals by Nationality and Age Group – 2008 (cont'd)**

<b>Nationality</b>	<b>0-4</b>	<b>5-9</b>	<b>10-14</b>	<b>15-19</b>	<b>20-24</b>	<b>25-29</b>	<b>30-34</b>	<b>35-39</b>	<b>40-44</b>	<b>45-49</b>	<b>50-54</b>	<b>55-59</b>	<b>60-64</b>	<b>65+</b>	<b>Not Stated</b>	<b>Total</b>
<b>Europe</b>																
Bulgaria	-	-	-	-	10	60	60	20	170	30	10	60	20	10	-	<b>450</b>
Slovakia	-	-	30	10	21	80	70	30	40	30	40	50	20	20	-	<b>441</b>
Greece	-	-	10	-	-	11	31	81	51	41	32	31	32	70	10	<b>400</b>
Ukraine	-	-	-	10	20	11	51	20	71	30	80	30	10	-	-	<b>333</b>
Hungary	-	-	-	-	10	31	50	41	30	20	30	40	10	10	-	<b>272</b>
Croatia	-	-	-	-	10	20	20	-	10	20	90	20	11	10	-	<b>211</b>
Luxembourg	-	-	-	10	10	40	-	-	10	10	12	21	1	20	-	<b>134</b>
Estonia	-	-	-	-	-	11	-	10	10	-	10	10	20	10	-	<b>81</b>
Iceland	-	-	-	-	40	10	-	10	-	-	-	10	-	10	-	<b>80</b>
Lithuania	-	-	-	-	-	-	-	20	10	-	10	-	20	-	-	<b>60</b>
Other Europe	-	-	-	10	20	51	20	30	20	52	40	42	21	11	-	<b>317</b>
<b>Asia</b>																
India	20	20	80	310	854	2,195	2,918	2,522	2,063	1,441	1,151	891	662	740	80	<b>15,947</b>
Japan	10	-	30	60	131	680	780	621	460	302	323	783	1,382	3,020	50	<b>8,632</b>
China	20	20	70	190	470	722	852	1,282	1,271	950	602	190	130	111	40	<b>6,920</b>
Korea	-	-	-	40	140	200	180	140	190	270	350	330	220	320	20	<b>2,400</b>
Pakistan	-	-	10	40	91	291	524	470	280	80	131	60	50	60	-	<b>2,087</b>
Sri lanka	-	-	20	40	80	230	210	301	202	260	211	90	30	70	-	<b>1,744</b>
Bangladesh	-	-	10	10	80	260	440	330	400	60	-	10	10	20	-	<b>1,630</b>
Israel	-	-	10	50	70	71	191	114	133	130	250	141	151	132	-	<b>1,443</b>
Malaysia	-	-	-	10	30	71	40	121	50	50	70	20	50	10	-	<b>522</b>
Singapore	-	-	-	12	21	52	80	60	70	91	51	63	10	10	-	<b>520</b>
Philippines	-	-	-	10	2	52	22	50	30	62	42	42	-	-	-	<b>312</b>
Lebanon	-	-	-	-	22	20	27	71	-	61	50	20	10	-	-	<b>281</b>
Taiwan	-	-	-	-	-	-	80	10	-	20	40	20	40	20	-	<b>230</b>
Cyprus	-	-	-	-	30	-	-	-	50	20	10	60	30	20	-	<b>220</b>
Turkey	-	-	-	-	20	-	21	-	-	30	30	10	40	30	10	<b>191</b>
Hong kong	-	-	-	-	-	10	11	61	20	20	10	31	-	20	-	<b>183</b>
Thailand	-	-	-	-	-	30	20	40	-	21	10	10	-	-	-	<b>131</b>
Indonesia	-	-	-	-	-	-	10	-	-	10	20	10	10	10	-	<b>70</b>

**Table 11: Total Arrivals by Nationality and Age Group – 2008 (cont'd)**

Nationality	0-4	5-9	10-14	15-19	20-24	25-29	30-34	35-39	40-44	45-49	50-54	55-59	60-64	65+	Not Stated	Total
<b>Asia</b>																
Iran	-	-	-	-	-	-	-	10	-	20	20	10	-	10	-	<b>70</b>
Saudi arabia	-	-	-	-	-	10	-	20	-	-	20	-	-	10	-	<b>60</b>
Other Asia	-	-	-	10	20	20	50	40	50	40	40	-	30	21	-	<b>321</b>
<b>Oceania</b>																
Australia	1	-	50	384	1,276	1,968	1,573	1,155	846	1,235	1,433	1,538	1,475	1,652	23	<b>14,609</b>
New zealand	-	-	10	32	269	535	349	283	188	151	270	402	343	349	-	<b>3,181</b>
Fiji	-	-	-	-	-	-	-	10	-	-	-	10	-	-	-	<b>20</b>
<b>Not Stated</b>	32	20	-	103	343	444	482	419	454	527	390	365	230	323	54	<b>4,186</b>
<b>Total</b>	<b>2,717</b>	<b>1,700</b>	<b>6,149</b>	<b>57,864</b>	<b>257,501</b>	<b>447,060</b>	<b>447,848</b>	<b>392,316</b>	<b>296,239</b>	<b>219,481</b>	<b>178,941</b>	<b>120,117</b>	<b>78,471</b>	<b>90,991</b>	<b>11,491</b>	<b>2,608,886</b>

**Table 12: Total Arrivals by Border Post and Purpose of Entry - 2008**

Border Post	Returning resident	Prospective resident	Seeking employment	Employment	Visitor	Holiday	Business	Intransit	Diplomat	Student	Other	Not Stated	Total
Ramokgwebana road	69,960	42,600	1,520	19,840	563,180	65,360	26,500	46,270	940	510	65,150	25,780	<b>927,610</b>
Kazungula ferry	11,880	12,310	1,580	9,760	83,790	75,610	24,500	37,810	530	280	26,420	10,420	<b>294,890</b>
Tlokweg gate	60,180	10,250	1,550	8,630	69,010	37,740	24,340	20,270	890	990	18,880	18,220	<b>270,950</b>
Martinsdrift	12,310	2,090	660	5,350	23,500	25,050	7,080	61,480	170	40	7,320	4,260	<b>149,310</b>
Kazungula road	3,950	2,280	460	12,970	16,670	45,470	14,480	25,800	360	100	14,680	2,240	<b>139,460</b>
Pioneer gate	13,020	2,770	930	2,500	22,080	12,910	12,880	49,140	200	300	2,640	7,620	<b>126,990</b>
Ramatlabama road	13,430	5,010	530	2,290	50,890	8,940	8,850	14,730	390	290	6,620	8,770	<b>120,740</b>
Mamono	2,200	1,270	430	3,270	7,570	9,460	870	65,350	100	100	1,260	1,790	<b>93,670</b>
Matsiloje	1,160	1,890	210	700	14,590	3,220	770	15,410	-	10	6,570	2,300	<b>46,830</b>
Maitengwe	870	2,100	40	170	10,890	710	520	6,250	20	30	19,670	2,460	<b>43,730</b>
Ngoma	630	830	260	3,970	3,810	9,820	220	20,460	30	10	1,220	1,330	<b>42,590</b>
Ramotswa	7,950	1,110	40	360	8,040	2,850	1,110	550	20	20	2,140	1,670	<b>25,860</b>
Kasane	270	470	150	1,400	1,970	3,920	480	8,520	10	30	5,570	710	<b>23,500</b>
Mohembo	350	450	130	2,530	2,930	10,430	120	3,060	10	-	190	610	<b>20,810</b>

**Table 12: Total Arrivals by Border Post and Purpose of Entry – 2008 (cont'd)**

<b>Border Post</b>	<b>Returning resident</b>	<b>Prospective resident</b>	<b>Seeking employment</b>	<b>Employment</b>	<b>Visitor</b>	<b>Holiday</b>	<b>Business</b>	<b>Intransit</b>	<b>Diplomat</b>	<b>Student</b>	<b>Other</b>	<b>Not Stated</b>	<b>Total</b>
Parrshalt	2,640	430	30	700	3,720	3,280	600	6,670	-	-	200	1,140	<b>19,410</b>
Sikwane	1,680	760	30	230	12,490	550	140	940	40	-	1,240	870	<b>18,970</b>
Phitshanemolopo	950	540	20	20	8,840	390	40	40	-	-	1,120	320	<b>12,280</b>
Pointdrift	800	130	10	2,030	770	6,200	170	50	10	10	630	330	<b>11,140</b>
Plaatjan	1,100	110	30	640	1,890	3,050	150	100	-	10	40	870	<b>7,990</b>
Tshabobg	349	148	9	268	2,497	1,490	221	44	12	3	184	444	<b>5,669</b>
Bray	904	54	12	38	1,349	584	148	184	3	1	113	355	<b>3,745</b>
Zanzibar	607	47	9	126	766	1,090	186	260	1	2	95	44	<b>3,233</b>
Middlepits	211	53	5	95	1,466	377	269	22	4	2	78	138	<b>2,720</b>
Bokspits	129	108	3	128	647	444	37	47	1	2	237	365	<b>2,148</b>
Two rivers	47	41	7	224	292	723	5	37	-	-	58	136	<b>1,570</b>
Kwando	-	-	-	62	4	1,475	2	6	-	-	-	9	<b>1,558</b>
Pandamatenge	29	24	11	82	209	272	11	166	-	2	52	32	<b>890</b>
Dobe	21	25	6	171	229	306	2	28	-	2	40	37	<b>867</b>
Makopong	88	47	5	34	260	136	5	30	-	-	104	100	<b>809</b>
Boshhoek	6	3	-	-	12	8	75	-	-	-	5	5	<b>114</b>
Shakawe	-	-	-	-	-	5	-	-	-	-	1	-	<b>6</b>
Sir Seretse khama Air	20,320	1,760	230	4,300	10,050	22,650	18,330	440	1,550	520	3,110	2,920	<b>86,180</b>
Maun airport	1,480	170	100	5,790	1,090	19,950	610	120	10	-	320	590	<b>30,230</b>
Kasane airport	713	5	39	773	100	3,093	96	277	14	-	48	151	<b>5,309</b>
Francistown airport	531	26	15	136	491	1,329	1,583	99	5	-	45	134	<b>4,394</b>
Limpopo valley	7	3	4	282	47	784	30	19	1	-	17	53	<b>1,247</b>
Sowa Airport	171	8	3	8	68	297	207	-	-	-	10	56	<b>828</b>
Selibephikwe airport	74	2	-	10	19	138	81	6	-	-	1	28	<b>359</b>
Orapa	47	1	1	7	19	122	63	1	-	1	14	14	<b>290</b>
Jwaneng	29	1	-	3	17	55	36	1	-	-	1	17	<b>160</b>
Ramokgwebana rail	1,030	3,310	150	750	49,830	880	470	1,250	40	10	610	1,500	<b>59,830</b>
<b>Total</b>	<b>232,123</b>	<b>93,236</b>	<b>9,219</b>	<b>90,647</b>	<b>976,092</b>	<b>381,168</b>	<b>146,287</b>	<b>385,937</b>	<b>5,361</b>	<b>3,275</b>	<b>186,703</b>	<b>98,838</b>	<b>2,608,886</b>

**Table 13: Total Arrivals by Month and Purpose of Entry - 2008**

Month	Returning resident	Prospective resident	Seeking employment	Employment	Visitor	Holiday	Business	Intransit	Diplomat	Student	Other	Not Stated	Total
<b>Male</b>													
January	14,807	4,482	261	4,458	32,816	14,380	6,980	20,579	340	203	1,421	404	<b>101,131</b>
February	7,231	4,388	1,299	3,606	39,075	17,646	7,716	14,020	253	540	5,164	530	<b>101,468</b>
March	13,372	4,539	789	5,315	24,481	20,458	8,143	24,684	263	140	7,151	8,630	<b>117,965</b>
April	13,483	5,715	315	5,549	47,569	17,284	8,161	23,065	283	130	1,495	1,948	<b>124,997</b>
May	10,043	4,732	397	4,204	30,193	17,975	11,763	23,704	292	90	17,771	4,675	<b>125,839</b>
June	13,528	416	133	1,783	40,694	19,159	14,238	21,693	250	121	7,931	272	<b>120,218</b>
July	15,616	5,745	195	6,823	50,883	20,221	8,390	24,507	290	80	3,782	852	<b>137,384</b>
August	10,993	5,210	1,343	7,032	35,908	26,760	8,762	23,924	236	161	12,192	1,633	<b>134,154</b>
September	14,620	650	248	1,882	50,643	22,344	11,450	22,911	281	112	12,213	1,123	<b>138,477</b>
October	10,672	4,307	843	5,780	36,539	20,340	9,622	22,711	545	140	3,735	25,233	<b>140,467</b>
November	13,647	2,646	382	3,655	41,699	17,502	8,263	22,486	235	90	19,382	3,443	<b>133,430</b>
December	14,706	4,741	567	3,821	43,890	19,370	10,185	40,667	332	150	12,381	12,606	<b>163,416</b>
<b>Total</b>	<b>152,718</b>	<b>47,571</b>	<b>6,772</b>	<b>53,908</b>	<b>474,390</b>	<b>233,439</b>	<b>113,673</b>	<b>284,951</b>	<b>3,600</b>	<b>1,957</b>	<b>104,618</b>	<b>61,349</b>	<b>1,538,946</b>
<b>Female</b>													
January	8,670	3,378	60	2,360	26,408	7,895	2,951	7,743	100	100	1,102	172	<b>60,939</b>
February	4,364	3,867	434	2,216	36,853	10,417	1,954	3,738	164	340	4,057	217	<b>68,621</b>
March	6,430	4,324	288	3,917	27,025	13,558	2,685	10,117	154	82	4,490	5,281	<b>78,351</b>
April	6,639	6,160	120	3,940	50,076	10,344	2,377	8,933	200	60	1,478	2,039	<b>92,366</b>
May	6,585	4,822	201	2,875	37,335	11,403	4,174	9,937	150	81	13,143	2,987	<b>93,693</b>
June	6,266	402	31	238	42,452	13,793	3,706	6,267	160	120	6,396	146	<b>79,977</b>
July	7,700	5,718	62	5,283	52,328	13,421	2,557	7,865	140	42	3,885	270	<b>99,271</b>
August	6,415	5,526	522	5,738	39,291	17,323	2,243	8,017	31	132	10,330	663	<b>96,231</b>
September	7,151	627	62	1,159	51,832	15,331	2,105	7,137	110	41	10,330	946	<b>96,831</b>
October	5,915	3,943	245	3,907	41,955	12,175	2,975	6,759	221	140	4,358	14,631	<b>97,224</b>
November	6,067	2,363	130	2,311	44,402	9,866	1,985	6,386	140	60	12,890	889	<b>87,489</b>
December	7,203	4,535	292	2,795	51,745	12,203	2,902	18,087	191	120	9,626	9,248	<b>118,947</b>
<b>Total</b>	<b>79,405</b>	<b>45,665</b>	<b>2,447</b>	<b>36,739</b>	<b>501,702</b>	<b>147,729</b>	<b>32,614</b>	<b>100,986</b>	<b>1,761</b>	<b>1,318</b>	<b>82,085</b>	<b>37,489</b>	<b>1,069,940</b>

**Table 13: Total Arrivals by Month and Purpose of Entry – 2008 (cont'd)**

<b>Month</b>	<b>Returning resident</b>	<b>Prospective resident</b>	<b>Seeking employment</b>	<b>Employment</b>	<b>Visitor</b>	<b>Holiday</b>	<b>Business</b>	<b>Intransit</b>	<b>Diplomat</b>	<b>Student</b>	<b>Other</b>	<b>Not Stated</b>	<b>Total</b>
<b>Both</b>													
January	23,477	7,860	321	6,818	59,224	22,275	9,931	28,322	440	303	2,523	576	<b>162,070</b>
February	11,595	8,255	1,733	5,822	75,928	28,063	9,670	17,758	417	880	9,221	747	<b>170,089</b>
March	19,802	8,863	1,077	9,232	51,506	34,016	10,828	34,801	417	222	11,641	13,911	<b>196,316</b>
April	20,122	11,875	435	9,489	97,645	27,628	10,538	31,998	483	190	2,973	3,987	<b>217,363</b>
May	16,628	9,554	598	7,079	67,528	29,378	15,937	33,641	442	171	30,914	7,662	<b>219,532</b>
June	19,794	818	164	2,021	83,146	32,952	17,944	27,960	410	241	14,327	418	<b>200,195</b>
July	23,316	11,463	257	12,106	103,211	33,642	10,947	32,372	430	122	7,667	1,122	<b>236,655</b>
August	17,408	10,736	1,865	12,770	75,199	44,083	11,005	31,941	267	293	22,522	2,296	<b>230,385</b>
September	21,771	1,277	310	3,041	102,475	37,675	13,555	30,048	391	153	22,543	2,069	<b>235,308</b>
October	16,587	8,250	1,088	9,687	78,494	32,515	12,597	29,470	766	280	8,093	39,864	<b>237,691</b>
November	19,714	5,009	512	5,966	86,101	27,368	10,248	28,872	375	150	32,272	4,332	<b>220,919</b>
December	21,909	9,276	859	6,616	95,635	31,573	13,087	58,754	523	270	22,007	21,854	<b>282,363</b>
<b>Total</b>	<b>232,123</b>	<b>93,236</b>	<b>9,219</b>	<b>90,647</b>	<b>976,092</b>	<b>381,168</b>	<b>146,287</b>	<b>385,937</b>	<b>5,361</b>	<b>3,275</b>	<b>186,703</b>	<b>98,838</b>	<b>2,608,886</b>

**Table14: Total Arrivals by Nationality and Purpose of Entry**

Nationality	Returning resident	Prospective resident	Seeking employment	Employment	Visitor	Holiday	Business	Intransit	Diplomat	Student	Other	Not Stated	Total
Africa													
Zimbabwe	92,307	51,404	2,115	22,670	653,710	81,696	43,311	76,150	1,390	631	101,609	35,165	<b>1,162,158</b>
South Africa	63,582	20,150	3,647	21,431	190,621	113,583	63,450	146,607	1,352	500	40,853	40,392	<b>706,168</b>
Zambia	16,337	12,531	1,561	2,365	83,593	44,967	25,806	67,849	550	250	27,430	10,807	<b>294,046</b>
Namibia	1,358	2,571	675	957	13,109	4,870	1,779	74,044	142	161	7,459	3,048	<b>110,173</b>
Malawi	3,292	710	80	290	4,921	1,255	481	1,853	20	40	770	610	<b>14,322</b>
Lesotho	985	500	81	390	2,725	1,145	437	691	113	700	878	351	<b>8,996</b>
Kenya	3,108	351	40	302	1,391	673	221	580	70	60	281	221	<b>7,298</b>
Mozambique	775	360	-	211	1,919	668	337	1,110	140	30	521	540	<b>6,611</b>
Swaziland	341	440	10	300	1,252	1,143	553	880	30	190	380	241	<b>5,760</b>
Tanzania	1,527	151	10	160	991	388	274	680	91	40	210	201	<b>4,723</b>
Nigeria	2,150	70	-	10	330	140	90	70	40	30	190	120	<b>3,240</b>
Uganda	540	211	50	50	750	182	92	330	-	-	191	170	<b>2,566</b>
DRC	801	40	-	70	340	262	60	230	40	10	100	50	<b>2,003</b>
Mauritius	833	100	-	40	273	230	151	30	40	-	120	12	<b>1,829</b>
Ghana	845	30	-	10	170	53	71	10	-	10	120	40	<b>1,359</b>
Botswana	689	75	-	10	156	92	12	10	10	20	11	80	<b>1,165</b>
Angola	170	10	-	40	100	235	90	90	70	10	91	40	<b>946</b>
Ethiopia	400	20	-	10	90	31	50	-	10	10	40	30	<b>691</b>
Egypt	280	-	-	31	90	60	20	-	-	-	80	70	<b>631</b>
Cameroon	220	-	-	10	20	40	20	1	-	-	10	-	<b>321</b>
Sierra leone	50	20	10	-	40	10	10	10	-	20	-	20	<b>190</b>
Madagascar	30	-	-	20	30	20	20	-	10	10	30	10	<b>180</b>
Somalia	60	10	-	-	10	20	-	20	-	-	-	30	<b>150</b>
Eritrea	70	-	-	-	30	21	-	10	-	-	10	-	<b>141</b>
Rwanda	10	-	-	-	10	12	30	10	30	-	10	20	<b>132</b>
Libya	20	-	-	-	30	20	1	-	20	-	10	-	<b>101</b>
Senegal	-	-	-	10	10	41	20	-	10	-	-	10	<b>101</b>
Sudan	30	-	-	-	-	30	-	-	-	-	10	10	<b>80</b>
Burkina faso	-	-	-	-	20	10	30	-	-	-	10	-	<b>70</b>
Cote d ivore	20	-	-	-	-	10	21	-	-	-	10	-	<b>61</b>
Seychelles	-	10	-	10	10	20	11	-	-	-	-	-	<b>61</b>
Gambia	-	-	-	10	10	20	10	-	-	-	-	10	<b>60</b>
Guinea	20	-	-	-	10	10	-	-	10	-	10	-	<b>60</b>
Gabon	-	-	-	-	20	10	10	-	-	10	-	-	<b>50</b>
Reunion	-	10	-	-	10	10	10	10	-	-	-	-	<b>50</b>
Other Africa	330	-	-	20	92	101	60	30	70	-	100	80	<b>883</b>



Table 14: Total Arrivals by Nationality and Purpose of Entry (cont'd)

Nationality	Returning resident	Prospective resident	Seeking employment	Employment	Visitor	Holiday	Business	Intransit	Diplomat	Student	Other	Not Stated	Total
America													
United States America	2,568	597	157	9,446	2,725	26,802	1,092	1,682	212	272	735	441	<b>46,729</b>
Canada	687	251	20	1,596	416	3,992	172	334	10	-	137	126	<b>7,741</b>
Brazil	101	30	-	141	40	252	12	50	-	-	10	-	<b>636</b>
Mexico	1	-	10	67	21	318	-	-	-	10	10	-	<b>437</b>
Argentina	30	-	-	53	60	121	-	10	-	10	-	10	<b>294</b>
Cuba	70	-	-	20	40	-	10	-	30	-	10	40	<b>220</b>
Jamaica	70	11	-	-	40	51	10	-	-	-	20	-	<b>202</b>
Colombia	-	-	-	-	10	90	10	20	-	-	-	-	<b>130</b>
Trinidad	70	-	-	30	-	-	-	-	-	-	-	10	<b>110</b>
Chile	10	-	-	10	10	24	1	10	-	10	10	-	<b>85</b>
Barbados	50	-	-	-	10	20	-	-	-	-	-	-	<b>80</b>
Belize	-	-	-	-	-	11	10	21	-	-	-	10	<b>52</b>
Other America	70	-	-	32	60	135	11	11	20	-	20	-	<b>359</b>
Europe													
United Kingdom	10,677	776	161	4,094	4,856	21,581	2,876	3,200	100	50	1,099	744	<b>50,214</b>
Germany	1,413	226	141	6,023	1,340	14,648	453	3,228	80	21	314	525	<b>28,412</b>
Netherlands	676	102	40	3,077	622	7,689	155	706	20	-	276	308	<b>13,671</b>
France	414	101	23	2,030	480	6,489	475	566	91	10	188	205	<b>11,072</b>
Italy	381	42	21	1,333	345	4,047	121	385	20	-	140	94	<b>6,929</b>
Spain	40	21	53	1,159	202	3,690	141	286	10	-	40	63	<b>5,705</b>
Switzerland	150	-	52	1,162	145	3,050	32	436	-	10	103	50	<b>5,190</b>
Belgiumluxenburg	261	40	10	630	237	2,222	266	271	40	20	61	56	<b>4,114</b>
Ireland	604	100	21	389	347	1,780	125	241	-	-	22	83	<b>3,712</b>
Austria	169	1	2	663	116	1,245	64	274	-	10	22	113	<b>2,679</b>
Denmark	195	50	2	430	174	1,341	40	276	20	-	40	108	<b>2,676</b>
Sweden	110	50	-	430	171	1,259	100	101	20	-	31	10	<b>2,282</b>
Russia	50	-	-	364	203	1,104	37	274	80	10	50	22	<b>2,194</b>
Norway	112	20	-	500	232	1,063	60	40	-	30	-	21	<b>2,078</b>
Portugal	494	20	20	104	242	642	101	161	10	-	100	110	<b>2,004</b>
Poland	101	-	20	153	52	340	10	171	-	-	20	-	<b>867</b>
Yugoslavia	420	20	-	20	140	41	12	50	-	-	20	50	<b>773</b>
Czechoslovakia	70	-	-	143	40	352	11	30	-	-	20	20	<b>686</b>
Finland	62	10	-	71	20	245	-	50	10	-	10	10	<b>488</b>
Bulgaria	230	-	-	-	70	40	20	10	-	-	40	40	<b>450</b>

Table 14: Total Arrivals by Nationality and Purpose of Entry (cont'd)

Nationality	Returning resident	Prospective resident	Seeking employment	Employment	Visitor	Holiday	Business	Intransit	Diplomat	Student	Other	Not Stated	Total
Europe													
Slovakia	10	10	-	70	21	260	10	40	-	-	10	10	<b>441</b>
Greece	50	-	-	55	11	201	41	30	-	-	-	12	<b>400</b>
Ukraine	30	-	-	81	20	152	10	-	-	-	10	30	<b>333</b>
Hungary	-	-	-	40	-	212	-	10	-	-	-	10	<b>272</b>
Croatia	110	-	-	41	-	50	-	-	-	-	-	10	<b>211</b>
Luxembourg	-	-	-	1	-	73	-	30	20	-	-	10	<b>134</b>
Estonia	-	-	-	30	10	31	-	-	-	-	-	10	<b>81</b>
Iceland	-	-	-	10	20	20	10	10	10	-	-	-	<b>80</b>
Lithuania	10	-	-	20	-	20	-	-	-	-	-	10	<b>60</b>
Other Europe	72	-	-	30	30	94	31	10	10	-	20	20	<b>317</b>
Asia													
India	10,617	330	30	500	1,484	890	572	90	70	-	410	954	<b>15,947</b>
Japan	60	20	60	1,692	150	6,229	151	90	20	20	80	60	<b>8,632</b>
China	2,813	80	-	660	880	1,016	431	50	60	30	270	630	<b>6,920</b>
Korea	390	40	-	230	80	1,540	50	20	-	10	30	10	<b>2,400</b>
Pakistan	1,385	50	-	20	251	111	40	10	-	-	40	180	<b>2,087</b>
Sri lanka	1,170	20	10	143	110	120	10	-	-	-	30	131	<b>1,744</b>
Bangladesh	1,060	20	-	30	210	30	30	-	-	-	50	200	<b>1,630</b>
Israel	210	10	10	155	170	604	111	61	-	-	30	82	<b>1,443</b>
Malaysia	50	-	-	70	40	262	60	20	-	-	10	10	<b>522</b>
Singapore	90	20	-	40	40	280	40	-	-	-	10	-	<b>520</b>
Philippines	110	-	-	52	40	87	-	12	-	-	11	-	<b>312</b>
Lebanon	165	-	-	-	20	25	10	10	-	-	21	30	<b>281</b>
Taiwan	90	-	-	30	-	90	-	10	-	-	10	-	<b>230</b>
Cyprus	120	-	-	-	20	30	-	20	10	-	-	20	<b>220</b>
Turkey	10	-	-	30	-	131	-	-	-	-	-	20	<b>191</b>
Hong kong	-	20	-	41	10	92	20	-	-	-	-	-	<b>183</b>
Thailand	20	10	-	10	30	41	10	-	-	-	-	10	<b>131</b>
Indonesia	-	-	-	10	-	30	-	-	10	-	10	10	<b>70</b>
Iran	30	20	-	20	-	-	-	-	-	-	-	-	<b>70</b>
Saudi arabia	-	-	-	10	10	10	10	-	-	-	-	20	<b>60</b>

Table 14: Total Arrivals by Nationality and Purpose of Entry (cont'd)

Nationality	Returning resident	Prospective resident	Seeking employment	Employment	Visitor	Holiday	Business	Intransit	Diplomat	Student	Other	Not Stated	Total
Other Asia	100	-	-	11	30	80	10	10	30	-	30	20	321
Oceania													
Australia	878	142	52	2,236	750	9,188	470	613	10	20	111	139	14,609
New Zealand	436	11	5	490	137	1,795	41	160	-	-	40	66	3,181
Fiji	-	-	-	10	-	10	-	-	-	-	-	-	20
Not Stated	501	191	20	182	1,169	602	154	432	80	-	378	477	4,186
<b>Total</b>	<b>232,123</b>	<b>93,236</b>	<b>9,219</b>	<b>90,647</b>	<b>976,092</b>	<b>381,168</b>	<b>146,287</b>	<b>385,937</b>	<b>5,361</b>	<b>3,275</b>	<b>186,703</b>	<b>98,838</b>	<b>2,608,886</b>

Table 15: Total Arrivals by Month and Quarter for Years 1998 - 2008

Month	1998	1999	2000	2001	2002	2003	2004	2005	2006	2007	2008
<b>January</b>	116,405	156,168	177,314	158,245	164,526	165,224	178,461	188,193	171,519	200,776	162,070
<b>February</b>	94,267	110,762	124,349	116,630	135,340	146,459	151,140	152,307	79,914	121,972	170,089
<b>March</b>	107,932	117,392	194,500	134,999	154,379	160,986	160,143	177,844	165,986	157,346	196,316
<b>1 st Quarter</b>	<b>318,604</b>	<b>384,322</b>	<b>496,163</b>	<b>409,874</b>	<b>454,245</b>	<b>472,669</b>	<b>489,744</b>	<b>518,344</b>	<b>417,419</b>	<b>480,094</b>	<b>528,475</b>
<b>April</b>	128,940	184,780	145,192	135,026	158,707	168,918	173,633	132,755	133,006	169,768	217,363
<b>May</b>	117,388	126,966	160,500	135,965	149,792	164,901	160,701	145,624	123,065	127,144	219,532
<b>June</b>	105,876	131,150	205,696	145,543	152,151	168,511	155,681	168,295	135,013	162,750	200,195
<b>2 nd Quarter</b>	<b>352,204</b>	<b>442,896</b>	<b>511,388</b>	<b>416,534</b>	<b>460,650</b>	<b>502,330</b>	<b>490,015</b>	<b>446,674</b>	<b>391,084</b>	<b>459,662</b>	<b>637,090</b>
<b>July</b>	135,480	144,903	301,203	136,113	166,001	184,865	175,194	147,845	157,743	188,142	236,655
<b>August</b>	134,571	101,734	143,945	159,270	169,209	185,390	178,002	143,736	165,530	222,798	230,385
<b>September</b>	106,102	140,298	185,146	158,513	156,119	174,374	164,467	200,444	203,344	203,212	235,308
<b>3 rd Quarter</b>	<b>376,153</b>	<b>386,935</b>	<b>630,294</b>	<b>453,896</b>	<b>491,329</b>	<b>544,629</b>	<b>517,663</b>	<b>492,025</b>	<b>526,617</b>	<b>614,152</b>	<b>702,348</b>
<b>October</b>	97,328	158,229	188,457	153,963	163,895	170,984	170,299	188,131	140,969	215,857	237,691
<b>November</b>	96,070	104,362	138,095	117,820	159,823	179,793	154,557	145,042	160,160	212,009	220,919
<b>December</b>	111,439	161,205	180,973	179,234	187,877	196,114	154,471	197,811	183,808	219,179	282,363
<b>4 th Quarter</b>	<b>304,837</b>	<b>423,796</b>	<b>507,525</b>	<b>451,017</b>	<b>511,595</b>	<b>546,891</b>	<b>479,327</b>	<b>530,984</b>	<b>484,937</b>	<b>647,045</b>	<b>740,973</b>
<b>Total</b>	<b>1,351,798</b>	<b>1,637,949</b>	<b>2,145,370</b>	<b>1,731,321</b>	<b>1,917,819</b>	<b>2,066,519</b>	<b>1,976,749</b>	<b>1,988,027</b>	<b>1,820,057</b>	<b>2,200,953</b>	<b>2,608,886</b>

**Table 16: Total Departures by Country of Residence and Sex - 2008**

Country of Residence	Male	Female	Total
<b>Africa</b>			
Zimbabwe	471,283	510,255	<b>981,538</b>
South Africa	480,519	174,397	<b>654,916</b>
Botswana	175,831	88,527	<b>264,358</b>
Zambia	148,666	110,248	<b>258,914</b>
Namibia	77,114	33,695	<b>110,809</b>
Lesotho	4,154	3,226	<b>7,380</b>
Swaziland	3,648	1,835	<b>5,483</b>
Malawi	4,387	1,030	<b>5,417</b>
Mozambique	3,088	821	<b>3,909</b>
Kenya	1,856	783	<b>2,639</b>
Tanzania	1,938	659	<b>2,597</b>
Uganda	763	343	<b>1,106</b>
Democratic Republic of Congo	641	140	<b>781</b>
Nigeria	492	211	<b>703</b>
Angola	451	216	<b>667</b>
Mauritius	366	155	<b>521</b>
Egypt	242	50	<b>292</b>
Ghana	194	80	<b>274</b>
Ethiopia	141	71	<b>212</b>
Madagascar	90	61	<b>151</b>
Rwanda	101	31	<b>132</b>
Senegal	91	20	<b>111</b>
Sudan	100	10	<b>110</b>
Cameroon	71	30	<b>101</b>
Sierra leone	51	40	<b>91</b>
Gabon	81	1	<b>82</b>
Sychelles	71	10	<b>81</b>
Libya	40	40	<b>80</b>
Cote d ivoire	60	10	<b>70</b>
Somalia	60	10	<b>70</b>
Tunisia	31	30	<b>61</b>
Gambia	31	20	<b>51</b>
Togo	40	10	<b>50</b>
Other Africa	188	92	<b>280</b>
<b>America</b>			
United States America	17,829	21,543	<b>39,372</b>
Canada	2,865	3,412	<b>6,277</b>
Brazil	284	228	<b>512</b>
Mexico	265	164	<b>429</b>
Argentina	105	92	<b>197</b>
Chile	53	42	<b>95</b>
Bermuda	30	50	<b>80</b>
Other America	246	145	<b>391</b>
<b>Europe</b>			
United Kingdom	15,023	14,040	<b>29,063</b>
Germany	11,896	11,756	<b>23,652</b>
Netherlands	5,279	5,740	<b>11,019</b>
France	4,846	4,263	<b>9,109</b>

**Table 16: Total Departures by Country of Residence and Sex – 2008 (cont'd)**

<b>Country of Residence</b>	<b>Male</b>	<b>Female</b>	<b>Total</b>
<b>Europe</b>			
Italy	2,850	2,983	<b>5,833</b>
Spain	2,576	2,702	<b>5,278</b>
Switzerland	2,384	2,626	<b>5,010</b>
Belgiumluxenburg	1,925	1,481	<b>3,406</b>
Austria	1,088	1,005	<b>2,093</b>
Russia	976	1,040	<b>2,016</b>
Denmark	1,081	867	<b>1,948</b>
Sweden	1,017	832	<b>1,849</b>
Ireland	910	832	<b>1,742</b>
Norway	779	926	<b>1,705</b>
Poland	409	336	<b>745</b>
Portugal	407	312	<b>719</b>
Czechoslovakia	398	295	<b>693</b>
Finland	253	250	<b>503</b>
Greece	237	186	<b>423</b>
Ukraine	208	194	<b>402</b>
Slovakia	210	150	<b>360</b>
Hungary	179	84	<b>263</b>
Luxembourg	94	102	<b>196</b>
Yugoslavia	52	60	<b>112</b>
Bulgaria	60	40	<b>100</b>
Croatia	23	41	<b>64</b>
Lithuania	20	40	<b>60</b>
Other Europe	194	121	<b>315</b>
<b>Asia</b>			
Japan	3,217	4,561	<b>7,778</b>
India	2,129	663	<b>2,792</b>
China	1,817	641	<b>2,458</b>
Korea	970	1,030	<b>2,000</b>
Israel	947	184	<b>1,131</b>
Singapore	245	211	<b>456</b>
Sri lanka	250	100	<b>350</b>
Pakistan	294	51	<b>345</b>
Malaysia	261	81	<b>342</b>
Hong kong	132	125	<b>257</b>
Bangladesh	241	11	<b>252</b>
Philipines	121	41	<b>162</b>
taiwan	92	66	<b>158</b>
Thailand	111	10	<b>121</b>
Turkey	50	70	<b>120</b>
Indonesia	61	21	<b>82</b>
Cyprus	42	30	<b>72</b>
Other asia	142	102	<b>244</b>
<b>Oceania</b>			
Australia	5,753	6,632	<b>12,385</b>
New zealand	1,100	1,148	<b>2,248</b>
Pacific islands	10	-	<b>10</b>
Not Stated	11,098	7,763	<b>18,861</b>
<b>Total</b>	<b>1,483,014</b>	<b>1,029,678</b>	<b>2,512,692</b>

**Table 17 Total Departures by Country of Residence and Age Group - 2008**

<b>Country of Residence</b>	<b>0-4</b>	<b>5-9</b>	<b>10-14</b>	<b>15-19</b>	<b>20-24</b>	<b>25-29</b>	<b>30-34</b>	<b>35-39</b>	<b>40-44</b>	<b>45-49</b>	<b>50-54</b>	<b>55-59</b>	<b>60-64</b>	<b>65+</b>	<b>Not Stated</b>	<b>Total</b>
<b>Africa</b>																
Zimbabwe	3,843	240	1,251	18,749	131,461	228,105	198,561	156,151	94,611	57,809	41,056	21,962	11,744	12,665	3,330	<b>981,538</b>
South Africa	2,686	827	1,906	15,224	41,928	64,702	85,313	94,232	90,763	77,942	67,675	47,731	29,896	32,978	1,113	<b>654,916</b>
Botswana	514	124	1,015	6,249	11,214	26,181	42,282	48,212	41,562	29,989	25,675	15,532	8,714	6,578	517	<b>264,358</b>
Zambia	1,070	80	420	4,499	29,227	58,681	61,006	45,178	24,335	15,797	9,371	4,686	2,137	1,987	440	<b>258,914</b>
Namibia	413	50	640	4,117	11,586	15,540	16,189	14,216	15,166	12,178	8,692	5,531	2,589	3,693	209	<b>110,809</b>
Lesotho	20	10	10	320	1,639	1,161	1,085	797	752	520	504	211	120	201	30	<b>7,380</b>
Swaziland	30	-	60	230	791	893	910	804	693	453	238	191	70	100	20	<b>5,483</b>
Malawi	20	-	10	110	441	800	1,032	800	730	451	432	231	120	230	10	<b>5,417</b>
Mozambique	10	-	10	70	320	570	771	613	510	450	320	124	81	40	20	<b>3,909</b>
Kenya	10	-	50	60	180	281	541	361	523	250	140	103	60	70	10	<b>2,639</b>
Tanzania	-	-	20	22	102	370	512	413	343	260	305	186	43	21	-	<b>2,597</b>
Uganda	-	-	10	20	160	180	250	101	111	71	133	40	30	-	-	<b>1,106</b>
DRC	30	-	-	20	-	40	150	81	110	100	100	90	10	40	10	<b>781</b>
Nigeria	-	-	-	20	10	90	130	70	130	92	81	30	10	30	10	<b>703</b>
Angola	-	-	-	50	20	65	47	57	136	119	97	44	22	10	-	<b>667</b>
Mauritius	-	-	10	30	20	60	40	51	50	88	120	41	10	1	-	<b>521</b>
Egypt	-	-	-	-	30	40	60	60	50	10	10	12	20	-	-	<b>292</b>
Ghana	-	-	-	20	-	10	31	60	31	30	60	10	11	11	-	<b>274</b>
Ethiopia	-	-	-	-	10	31	10	40	20	20	30	21	20	-	10	<b>212</b>
Madagascar	-	-	10	-	10	21	10	10	20	50	-	10	10	-	-	<b>151</b>
Rwanda	-	-	-	-	-	20	21	10	10	30	21	10	-	10	-	<b>132</b>
Senegal	-	-	-	-	-	-	20	-	10	30	21	20	10	-	-	<b>111</b>
Sudan	-	-	-	-	-	10	20	30	20	20	10	-	-	-	-	<b>110</b>
Cameroon	-	-	-	-	20	20	-	31	-	20	-	-	-	10	-	<b>101</b>
Sierra leone	-	-	-	-	11	10	10	10	10	20	10	10	-	-	-	<b>91</b>
Gabon	-	-	-	30	-	-	10	-	10	22	-	10	-	-	-	<b>82</b>
Seychelles	-	-	-	10	10	-	30	-	10	11	10	-	-	-	-	<b>81</b>
Libya	-	-	-	-	-	10	10	10	-	20	20	-	10	-	-	<b>80</b>
Cote d ivoire	-	-	-	-	20	-	10	-	-	30	10	-	-	-	-	<b>70</b>
Somalia	-	-	-	-	10	-	10	30	10	10	-	-	-	-	-	<b>70</b>

**Table 17 Total Departures by Country of Residence and Age Group – 2008 (cont'd)**

<b>Country of Residence</b>	<b>0-4</b>	<b>5-9</b>	<b>10-14</b>	<b>15-19</b>	<b>20-24</b>	<b>25-29</b>	<b>30-34</b>	<b>35-39</b>	<b>40-44</b>	<b>45-49</b>	<b>50-54</b>	<b>55-59</b>	<b>60-64</b>	<b>65+</b>	<b>Not Stated</b>	<b>Total</b>
<b>Africa</b>																
Tunisia	-	-	-	-	-	-	20	-	20	11	10	-	-	-	-	<b>61</b>
Gambia	-	-	-	-	-	40	-	-	-	1	10	-	-	-	-	<b>51</b>
Togo	-	-	-	-	-	-	20	10	-	-	-	20	-	-	-	<b>50</b>
Other Africa	-	-	-	-	20	30	21	52	64	10	32	31	10	10	-	<b>280</b>
<b>America</b>																
USA	152	30	131	1,458	2,797	2,681	2,545	1,876	2,181	2,547	3,220	3,869	5,307	10,514	64	<b>39,372</b>
Canada	55	-	21	244	501	681	474	313	308	591	508	681	654	1,236	10	<b>6,277</b>
Brazil	-	-	-	31	134	62	22	42	61	34	61	24	10	31	-	<b>512</b>
Mexico	-	-	-	11	44	56	63	57	54	15	33	44	11	41	-	<b>429</b>
Argentina	-	-	-	-	30	11	50	10	2	11	22	30	11	20	-	<b>197</b>
Chile	10	-	-	10	-	2	11	10	3	2	21	24	1	1	-	<b>95</b>
Bermuda	-	-	-	-	-	-	20	20	10	10	-	-	10	10	-	<b>80</b>
Other America	-	-	-	10	10	42	21	52	40	65	20	80	1	50	-	<b>391</b>
<b>Europe</b>																
United Kingdom	71	40	82	1,622	2,555	3,104	2,796	2,579	2,340	2,553	2,610	2,478	2,777	3,366	90	<b>29,063</b>
Germany	12	2	62	402	997	1,549	1,726	2,020	2,519	2,461	2,868	2,226	2,574	4,223	11	<b>23,652</b>
Netherlands	-	-	72	316	943	1,201	1,145	995	807	1,003	976	1,170	1,160	1,211	20	<b>11,019</b>
France	23	-	30	222	381	610	874	757	842	1,052	1,004	1,142	1,149	1,010	13	<b>9,109</b>
Italy	1	-	41	123	74	423	987	824	735	569	601	494	371	580	10	<b>5,833</b>
Spain	31	-	30	61	141	506	788	781	719	602	692	342	317	248	20	<b>5,278</b>
Switzerland	-	-	21	96	284	408	514	358	451	507	528	598	583	660	2	<b>5,010</b>
Belgiumluxenburg	1	1	20	124	186	345	386	298	318	426	336	290	374	300	1	<b>3,406</b>
Austria	-	10	20	30	53	170	142	153	117	282	273	315	175	353	-	<b>2,093</b>
Russia	-	-	11	32	115	142	334	232	293	281	279	184	51	62	-	<b>2,016</b>
Denmark	1	-	10	94	270	162	172	91	132	84	186	228	204	304	10	<b>1,948</b>
Sweden	-	-	-	121	201	150	150	192	103	130	133	233	225	201	10	<b>1,849</b>
Ireland	-	-	-	111	210	312	416	103	101	114	43	127	85	120	-	<b>1,742</b>
Norway	10	-	10	40	415	220	111	131	100	161	93	201	91	122	-	<b>1,705</b>
Poland	1	-	-	10	10	53	111	133	102	52	121	112	40	-	-	<b>745</b>
Portugal	-	1	11	20	-	61	82	93	41	113	87	93	36	81	-	<b>719</b>
Czechoslovakia	10	1	-	10	10	111	100	40	50	62	61	52	52	134	-	<b>693</b>

**Table 17 Total Departures by Country of Residence and Age Group – 2008 (cont'd)**

<b>Country of Residence</b>	<b>0-4</b>	<b>5-9</b>	<b>10-14</b>	<b>15-19</b>	<b>20-24</b>	<b>25-29</b>	<b>30-34</b>	<b>35-39</b>	<b>40-44</b>	<b>45-49</b>	<b>50-54</b>	<b>55-59</b>	<b>60-64</b>	<b>65+</b>	<b>Not Stated</b>	<b>Total</b>
<b>Europe</b>																
Finland	-	20	-	10	40	40	21	60	60	11	40	50	81	70	-	<b>503</b>
Greece	-	-	-	-	10	20	11	31	31	43	43	62	52	120	-	<b>423</b>
Ukraine	-	-	-	-	30	42	23	63	90	41	42	41	30	-	-	<b>402</b>
Slovakia	-	-	-	10	30	40	50	10	70	20	20	50	30	30	-	<b>360</b>
Hungary	-	-	-	-	10	26	72	41	32	2	30	10	30	10	-	<b>263</b>
Luxembourg	10	-	-	1	1	51	30	-	20	22	10	21	20	10	-	<b>196</b>
Yugoslavia	-	-	-	-	-	10	10	10	21	-	10	11	10	30	-	<b>112</b>
Bulgaria	-	-	-	10	10	-	20	10	-	10	10	20	-	10	-	<b>100</b>
Croatia	-	-	-	-	10	10	2	21	-	10	10	-	1	-	-	<b>64</b>
Lithuania	-	-	-	-	-	-	-	-	30	-	10	20	-	-	-	<b>60</b>
Other Europe	-	-	-	11	11	52	15	32	22	53	20	33	44	22	-	<b>315</b>
<b>Asia</b>																
Japan	10	-	10	30	141	480	640	561	412	300	243	777	1,216	2,958	-	<b>7,778</b>
India	-	-	10	50	110	451	472	332	320	320	252	171	130	164	10	<b>2,792</b>
China	20	10	10	50	100	317	337	372	431	380	191	100	60	80	-	<b>2,458</b>
Korea	10	-	-	50	160	100	150	160	140	130	330	210	260	300	-	<b>2,000</b>
Israel	-	-	10	31	71	101	80	110	143	110	140	101	112	122	-	<b>1,131</b>
Singapore	-	2	1	22	31	20	55	84	82	44	31	52	20	12	-	<b>456</b>
Sri lanka	-	-	-	-	20	30	40	40	40	70	30	10	40	30	-	<b>350</b>
Pakistan	-	-	-	20	10	71	81	60	41	30	1	20	10	1	-	<b>345</b>
Malaysia	-	-	-	10	20	71	20	40	40	40	30	21	20	30	-	<b>342</b>
Hong kong	-	-	-	10	31	11	56	33	3	32	20	21	10	30	-	<b>257</b>
Bangladesh	-	-	-	-	31	20	100	41	50	-	10	-	-	-	-	<b>252</b>
Philippines	-	-	-	20	10	10	22	10	10	10	40	20	-	10	-	<b>162</b>
Taiwan	-	-	-	-	-	1	12	12	11	21	10	20	40	31	-	<b>158</b>
Thailand	-	-	-	-	-	-	10	30	20	30	10	10	11	-	-	<b>121</b>
Turkey	-	-	-	10	-	-	10	-	-	20	20	-	60	-	-	<b>120</b>
Indonesia	-	-	-	10	10	-	10	10	10	21	-	1	10	-	-	<b>82</b>
Cyprus	-	-	-	10	-	-	20	-	-	10	10	-	2	20	-	<b>72</b>
Other asia	-	-	-	-	20	10	31	31	40	50	20	1	20	21	-	<b>244</b>



**Table 17 Total Departures by Country of Residence and Age Group – 2008 (cont'd)**

Country of Residence	0-4	5-9	10-14	15-19	20-24	25-29	30-34	35-39	40-44	45-49	50-54	55-59	60-64	65+	Not Stated	Total
<b>Oceania</b>																
Australia	52		20	269	990	1,907	1,387	917	674	1,004	1,193	1,364	1,153	1,425	30	<b>12,385</b>
New Zealand	10		1	60	194	294	277	150	219	118	245	248	220	192	20	<b>2,248</b>
Pacific islands	-		-	-	-	-	10	-	-	-	-	-	-	-	-	<b>10</b>
<b>Not Stated</b>	140	41	2	305	1,759	3,179	2,857	2,547	2,152	1,571	1,497	977	723	1,026	85	<b>18,861</b>
<b>Total</b>	<b>9,276</b>	<b>1,489</b>	<b>6,058</b>	<b>56,047</b>	<b>243,461</b>	<b>418,387</b>	<b>430,103</b>	<b>380,468</b>	<b>288,453</b>	<b>215,164</b>	<b>174,537</b>	<b>116,366</b>	<b>76,431</b>	<b>90,317</b>	<b>6,135</b>	<b>2,512,692</b>

**Table 18 : Total Departures by Country of Residence and Month - 2008**

Country of Residence	January	February	March	April	May	June	July	August	September	October	November	December	Total
<b>Africa</b>													
Zimbabwe	63,872	66,028	72,529	77,230	37,681	61,758	88,493	101,382	92,648	96,340	94,563	129,014	<b>981,538</b>
South Africa	53,884	40,532	55,041	53,847	44,138	56,150	59,967	56,881	51,213	53,357	49,448	80,458	<b>654,916</b>
Botswana	18,955	20,718	23,292	22,192	13,183	16,440	22,161	25,438	22,512	21,441	21,372	36,654	<b>264,358</b>
Zambia	17,252	17,663	21,174	26,509	12,133	25,062	26,743	24,659	23,101	22,474	19,933	22,211	<b>258,914</b>
Namibia	9,264	7,334	11,110	8,728	8,649	7,986	9,087	10,410	8,458	9,206	8,922	11,655	<b>110,809</b>
Lesotho	230	1,890	773	500	240	341	743	460	503	533	547	620	<b>7,380</b>
Swaziland	321	770	534	420	320	300	308	530	465	382	462	671	<b>5,483</b>
Malawi	521	420	422	510	200	360	472	421	551	350	520	670	<b>5,417</b>
Mozambique	180	271	114	351	160	201	440	310	300	900	282	400	<b>3,909</b>
Kenya	172	130	322	210	181	210	171	170	180	212	290	391	<b>2,639</b>
Tanzania	154	110	229	211	101	205	220	330	195	141	341	360	<b>2,597</b>
Uganda	70	20	124	10	51	141	90	70	120	90	150	170	<b>1,106</b>
DRC	30	60	41	50	20	160	80	70	80	60	80	50	<b>781</b>
Nigeria	20	10	82	50	30	20	50	40	100	101	90	110	<b>703</b>
Angola	21	14	74	20	81	70	30	71	101	35	70	80	<b>667</b>
Mauritius	80	11	42	51	30	51	33	22	31	43	44	83	<b>521</b>
Egypt	11	20	31	20	20	40	30	20	20	40	20	20	<b>292</b>
Ghana	10	40	33	40	60	21	10	20	20	10	10	-	<b>274</b>
Ethiopia	20	11	11	10	-	10	-	40	60	10	20	20	<b>212</b>
Madagascar	10	-	10	30	30	31	-	-	10	-	20	10	<b>151</b>
Rwanda	20	10	12	20	10	-	-	-	30	20	-	10	<b>132</b>
Senegal	31	-	-	20	-	20	-	-	-	20	20	-	<b>111</b>

**Table 18 : Total Departures by Country of Residence and Month – 2008 (cont'd)**

Country of Residence	January	February	March	April	May	June	July	August	September	October	November	December	Total
<b>Africa</b>													
Sudan	20	-	20	-	-	20	10	-	10	20	10	-	<b>110</b>
Cameroon	1	-	40	10	10	10	10	-	-	10	-	10	<b>101</b>
Sierra leone	10	-	30	-	-	-	-	21	20	10	-	-	<b>91</b>
Gabon	-	-	-	-	-	30	30	2	10	-	10	-	<b>82</b>
Sychelles	10	-	1	10	-	10	10	-	-	30	-	10	<b>81</b>
Libya	30	10	10	-	-	-	-	10	-	20	-	-	<b>80</b>
Cote d ivore	-	-	10	-	-	30	10	10	-	-	10	-	<b>70</b>
Somalia	10	-	-	20	-	-	10	10	10	10	-	-	<b>70</b>
Tunisia	1	-	10	-	10	20	-	20	-	-	-	-	<b>61</b>
Gambia	-	-	1	-	-	-	10	20	-	-	20	-	<b>51</b>
Togo	20	-	-	-	-	-	-	20	10	-	-	-	<b>50</b>
Other Africa	1	4	12	70	20	-	10	20	50	32	50	11	<b>280</b>
<b>America</b>													
USA	1,030	1,681	2,654	3,135	3,295	4,577	5,887	4,200	4,693	3,500	2,972	1,748	<b>39,372</b>
Canada	448	490	847	403	364	435	595	535	601	711	559	289	<b>6,277</b>
Brazil	83	40	25	40	24	102	75	30	1	20	41	31	<b>512</b>
Mexico	20	10	32	30	46	28	92	54	40	2	42	33	<b>429</b>
Argentina	41	10	20	50	-	-	23	23	10	10	10	-	<b>197</b>
Chile	-	20	11	10	22	-	-	-	20	1	10	1	<b>95</b>
Bermuda	-	-	10	10	10	10	20	10	-	-	10	-	<b>80</b>
Other America	20	-	80	55	22	10	22	62	50	20	30	20	<b>391</b>
<b>Europe</b>													
United Kingdom	2,443	1,740	2,841	2,312	1,607	1,827	2,589	3,884	2,979	2,680	2,413	1,748	<b>29,063</b>
Germany	1,229	1,193	1,533	1,568	1,536	1,414	2,125	2,673	2,927	3,547	2,574	1,333	<b>23,652</b>
Netherlands	584	433	560	460	557	471	1,166	1,686	1,279	1,769	1,375	679	<b>11,019</b>
France	369	681	838	763	490	410	578	1,506	665	810	1,517	482	<b>9,109</b>
Italy	281	191	158	303	314	428	455	1,983	652	598	307	163	<b>5,833</b>
Spain	159	339	261	244	279	392	401	1,576	612	522	383	110	<b>5,278</b>
Switzerland	300	153	312	331	331	321	388	639	557	881	529	268	<b>5,010</b>
Belgiumluxenburg	165	263	329	284	197	154	418	398	300	434	297	167	<b>3,406</b>
Austria	172	63	51	147	156	71	221	376	146	246	393	51	<b>2,093</b>
Russia	300	120	175	164	243	42	142	237	111	158	220	104	<b>2,016</b>
Denmark	182	249	180	97	20	81	250	84	202	320	213	70	<b>1,948</b>

**Table 18 : Total Departures by Country of Residence and Month – 2008 (cont'd)**

Country of Residence	January	February	March	April	May	June	July	August	September	October	November	December	Total
<b>Europe</b>													
Sweden	174	180	284	101	102	50	120	113	30	90	350	255	<b>1,849</b>
Ireland	153	122	180	72	42	106	335	203	154	174	131	70	<b>1,742</b>
Norway	130	160	276	200	52	60	150	81	152	132	242	70	<b>1,705</b>
Poland	20	22	30	40	52	22	94	31	71	61	261	41	<b>745</b>
Portugal	20	41	71	10	49	61	30	143	51	70	91	82	<b>719</b>
Czechoslovakia	22	74	1	70	10	40	81	90	100	80	95	30	<b>693</b>
Finland	40	70	50	10	11	30	60	40	50	50	51	41	<b>503</b>
Greece	50	30	34	21	30	30	30	80	2	6	40	70	<b>423</b>
Ukraine	144	70	10	30	40	10	10	12	20	-	35	21	<b>402</b>
Slovakia	20	10	20	20	10	10	30	10	-	140	70	20	<b>360</b>
Hungary	-	40	30	-	-	21	-	11	10	10	81	60	<b>263</b>
Luxembourg	-	-	-	10	3	20	40	51	40	-	10	22	<b>196</b>
Yugoslavia	10	10	10	20	10	10	10	-	1	10	21	-	<b>112</b>
Bulgaria	20	10	30	10	10	-	10	-	10	-	-	-	<b>100</b>
Croatia	-	-	-	2	-	-	-	40	-	10	2	10	<b>64</b>
Lithuania	-	-	-	30	10	-	-	-	-	20	-	-	<b>60</b>
Other europe	20	10	-	21	47	20	11	67	10	41	57	11	<b>315</b>
<b>Asia</b>													
Japan	430	640	650	521	860	681	553	584	714	1,591	314	240	<b>7,778</b>
India	131	140	240	191	193	364	230	240	260	191	311	301	<b>2,792</b>
China	181	370	200	170	162	122	170	193	140	240	220	290	<b>2,458</b>
Korea	370	290	260	140	60	140	110	300	120	110	40	60	<b>2,000</b>
Israel	30	103	110	102	60	140	92	112	132	80	110	60	<b>1,131</b>
Singapore	50	20	30	-	72	133	23	32	20	35	10	31	<b>456</b>
Sri lanka	10	20	30	50	20	50	20	20	20	20	50	40	<b>350</b>
Pakistan	31	51	21	40	1	-	20	40	11	10	80	40	<b>345</b>
Malaysia	80	20	20	-	30	30	20	40	40	20	20	22	<b>342</b>
Hong kong	-	10	10	1	-	21	20	23	130	10	-	32	<b>257</b>
Bangladesh	11	-	10	20	50	10	20	10	11	20	50	40	<b>252</b>
Philipines	-	10	20	10	31	20	20	10	10	11	-	20	<b>162</b>
Taiwan	-	20	-	-	-	-	-	78	40	-	20	-	<b>158</b>
Thailand	20	-	-	-	10	-	20	10	10	21	10	20	<b>121</b>

**Table 18 : Total Departures by Country of Residence and Month – 2008 (cont'd)**

Country of Residence	January	February	March	April	May	June	July	August	September	October	November	December	Total
<b>Asia</b>													
Turkey	-	-	-	-	-	20	10	-	-	30	60	-	<b>120</b>
Indonesia	10	20	-	-	2	-	-	10	-	30	10	-	<b>82</b>
Cyprus	10	10	-	-	10	2	10	10	10	10	-	-	<b>72</b>
Other asia	20	10	21	10	10	40	60	2	10	10	30	21	<b>244</b>
<b>Oceania</b>													
Australia	879	671	832	1,161	1,032	911	1,309	1,224	1,663	1,338	695	670	<b>12,385</b>
New zealand	180	61	107	160	80	204	243	316	326	283	174	114	<b>2,248</b>
Pacific islands	-	-	-	-	-	-	-	10	-	-	-	-	<b>10</b>
Not Stated	4	1,100	46	205	2,664	223	209	2,553	4,881	639	72	6,265	<b>18,861</b>
<b>Total</b>	<b>176,327</b>	<b>168,167</b>	<b>200,684</b>	<b>204,993</b>	<b>132,696</b>	<b>184,071</b>	<b>228,845</b>	<b>248,222</b>	<b>225,902</b>	<b>227,719</b>	<b>215,012</b>	<b>300,054</b>	<b>2,512,692</b>

**Table 19 :Total Departures by Country of Residence and Border Post - 2008**

Country of Residence	Tlokweng gate	Sir Seretse khama Air	Parrshalt	Mamono	Sikwane	Ramotswa	Francis town air	Ramokgwe bana road	Kazungula road	Maun Air	Mohembo	Plaatjan	Point drift	Ngoma
<b>Africa</b>														
Zimbabwe	9,590	2,850	850	10,040	200	590	62	746,500	62,260	40	1,430	20	30	7,120
South Africa	149,120	27,700	12,650	29,540	16,440	20,040	3,695	24,240	12,040	4,440	4,120	4,480	5,560	5,770
Botswana	61,800	24,410	2,360	3,060	1,940	9,520	833	88,350	4,860	1,970	370	780	850	900
Zambia	6,100	1,510	10	230	20	80	18	1,570	13,060	40	60	20	-	2,250
Namibia	1,240	1,060	10	40,190	60	30	5	2,840	3,280	140	4,150	-	10	15,980
Lesotho	4,480	460	20	50	60	190	-	80	80	-	10	-	-	20
Swaziland	3,030	480	-	200	-	80	1	150	70	20	20	-	-	20
Malawi	1,210	600	10	110	20	40	2	1,360	200	-	20	-	-	20
Mozambique	1,310	810	20	100	10	40	1	670	50	10	-	-	20	10
Kenya	380	910	-	90	-	-	4	100	170	10	130	-	-	20
Tanzania	370	750	-	-	-	-	9	90	70	-	20	10	10	20

**Table 19 :Total Departures by Country of Residence and Border Post – 2008 (cont'd)**

Country of Residence	Tlokweng gate	Sir Seretse khama Air	Parrshalt	Mamono	Sikwane	Ramotswa	Francis town air	Ramokgwe bana road	Kazungula road	Maun Air	Mohembo	Plaatjan	Point drift	Ngoma
<b>Africa</b>														
Uganda	220	460	-	20	10	-	1	60	20	-	50	-	20	-
DRC	70	230	-	-	-	-	-	40	80	10	-	-	-	-
Nigeria	110	490	-	10	-	-	-	20	10	10	-	-	-	-
Angola	-	300	-	90	-	-	-	10	30	40	10	-	-	40
Mauritius	80	300	-	-	-	10	18	10	20	10	-	-	-	-
Egypt	40	140	-	10	-	-	-	10	10	-	-	-	-	-
Ghana	20	220	-	-	-	-	1	10	-	-	-	-	-	-
Ethiopia	10	160	-	-	-	-	-	30	-	-	-	-	-	10
Madagascar	-	140	-	-	-	-	-	-	-	-	-	-	-	-
Rwanda	10	90	-	-	-	-	-	-	10	-	-	-	-	-
Senegal	-	90	-	-	-	10	-	10	-	-	-	-	-	-
Sudan	10	70	-	-	-	-	-	10	10	-	-	-	-	-
Cameroon	40	40	-	10	-	-	-	10	-	-	-	-	-	-
Sierra leone	-	90	-	-	-	-	1	-	-	-	-	-	-	-
Gabon	-	70	-	-	-	-	-	-	10	-	-	-	-	-
Seychelles	-	60	-	-	-	-	-	-	-	-	-	-	-	-
Libya	20	60	-	-	-	-	-	-	-	-	-	-	-	-
Cote d ivoire	-	70	-	-	-	-	-	-	-	-	-	-	-	-
Somalia	20	10	-	-	-	-	-	-	-	-	-	-	-	-
Tunisia	-	50	-	-	-	-	-	-	-	10	-	-	-	-
Gambia	-	30	-	20	-	-	-	-	-	-	-	-	-	-
Togo	-	50	-	-	-	-	-	-	-	-	-	-	-	-
Other Africa	-	190	-	-	-	-	3	-	10	-	-	-	-	-
<b>America</b>														
USA	1,800	3,590	50	360	30	110	70	150	9,580	7,130	520	200	220	280
Canada	240	580	-	190	10	10	16	70	1,130	670	290	40	30	140
Brazil	120	60	-	-	-	-	3	-	40	60	-	-	-	10
Mexico	10	20	-	10	-	-	2	-	10	130	20	-	-	-
Argentina	-	10	-	20	-	-	-	-	40	40	-	-	-	-
Chile	-	10	-	-	-	-	-	-	10	20	-	-	-	-
Bermuda	-	10	-	-	-	-	-	-	-	30	10	10	-	-
Other America	40	80	-	20	10	-	2	20	20	60	-	-	-	10
United Kingdom	1,740	3,840	70	1,150	80	220	54	1,150	2,640	3,840	1,780	350	550	670
Germany	430	680	-	2,060	20	70	7	90	6,070	2,040	1,900	170	460	2,830

**Table 19 :Total Departures by Country of Residence and Border Post - 2008 (cont'd )**

Country of Residence	Tlokweg gate	Sir Seretse khama Air	Parrshalt	Mamono	Sikwane	Ramotswa	Francis town air	Ramokgwe bana road	Kazungula road	Maun Air	Mohembo	Plaatjan	Point drift	Ngoma
<b>Europe</b>														
Netherlands	300	360	30	840	20	-	5	40	2,250	450	1,840	140	240	1,120
France	210	860	-	400	20	40	4	30	2,450	1,010	560	30	150	280
Italy	140	190	-	120	-	-	2	20	2,050	860	120	20	100	120
Spain	60	170	-	120	-	-	-	-	2,150	730	220	-	20	110
Switzerland	100	220	-	310	20	10	9	30	1,220	910	160	50	80	360
Belgiumluxenburg	100	420	10	150	10	10	5	20	630	400	190	30	240	70
Austria	40	70	-	180	-	-	7	10	540	150	140	70	-	220
Russia	130	130	-	60	-	-	16	30	330	90	10	-	-	20
Denmark	80	100	-	30	-	-	-	10	340	300	40	60	200	20
Sweden	140	370	-	130	-	-	-	20	420	130	70	-	50	50
Ireland	80	190	-	80	-	10	4	40	170	100	80	-	-	80
Norway	120	280	-	50	-	10	2	10	370	120	10	10	120	50
Poland	70	110	-	30	-	-	-	10	200	40	50	-	-	90
Portugal	120	100	-	20	-	-	3	-	140	60	20	-	10	10
Czechoslovakia	20	20	-	10	-	10	-	-	240	30	70	-	-	90
Finland	10	190	-	10	-	-	1	-	130	20	10	-	-	10
Greece	10	40	-	30	-	-	2	-	130	40	10	-	10	-
Ukraine	10	40	-	-	-	-	-	-	180	50	-	-	-	-
Slovakia	-	-	-	-	-	-	-	-	200	10	10	-	-	20
Hungary	10	70	-	-	-	-	-	-	70	10	30	-	-	-
Luxembourg	-	20	-	30	-	-	-	-	20	40	-	-	-	20
Yugoslavia	40	40	-	-	-	20	1	-	10	-	-	-	-	-
Bulgaria	40	30	-	-	-	-	-	10	10	-	-	-	-	-
Croatia	-	10	-	-	-	-	-	-	40	10	-	-	-	-
Lithuania	-	-	-	-	-	-	-	-	10	20	-	-	-	-
Other Europe	20	50	-	30	-	-	-	10	70	40	10	-	-	-
<b>Asia</b>														
Japan	20	200	-	50	-	-	14	-	6,640	180	30	-	-	-
India	570	1,300	-	-	-	110	2	20	140	110	-	-	-	-
China	290	1,370	-	70	10	80	-	10	390	90	-	-	-	-
Korea	90	50	-	40	-	10	-	-	1,710	-	10	-	-	-
Israel	120	590	-	20	-	-	-	-	180	30	10	-	-	-
Singapore	50	110	-	10	-	-	-	-	90	30	10	-	-	-
Sri lanka	60	210	-	-	-	20	-	-	-	-	-	-	-	-

**Table 19 :Total Departures by Country of Residence and Border Post - 2008 (cont'd )**

Country of Residence	Tlokweng gate	Sir Seretse khama Air	Parrshalt	Mamono	Sikwane	Ramotswa	Francis town air	Ramokgwe bana road	Kazungula road	Maun Air	Mohembo	Plaatjan	Point drift	Ngoma
<b>Asia</b>														
Pakistan	120	100	-	-	-	-	2	40	10	10	10	-	-	-
Malaysia	20	210	-	-	-	-	-	-	-	10	10	-	-	-
Hong kong	10	20	-	-	-	-	-	-	100	60	-	-	-	-
Bangladesh	60	60	-	-	-	-	2	-	-	-	-	-	-	-
Philippines	20	60	-	-	-	-	-	-	10	10	-	-	-	-
Taiwan	-	20	-	-	-	-	-	-	90	-	-	-	-	-
Thailand	10	50	-	-	-	-	-	-	20	10	-	-	-	-
Turkey	-	-	-	-	-	-	-	-	-	20	20	-	-	-
Indonesia	10	40	-	-	-	-	2	-	10	20	-	-	-	-
Cyprus	20	10	-	10	-	-	-	-	-	10	-	-	-	-
Other asia	-	110	-	-	-	10	-	10	30	30	20	-	-	-
<b>Oceania</b>														
Australia	410	700	20	470	-	30	116	250	2,590	1,080	1,030	60	90	400
New zealand	50	100	20	140	10	10	1	50	330	220	250	-	-	60
Pacific islands	-	-	-	-	-	-	-	-	-	-	10	-	-	-
Not Stated	310	750	170	90	220	190	106	8,690	940	400	120	30	50	470
<b>Total</b>	<b>247,750</b>	<b>83,970</b>	<b>16,300</b>	<b>91,110</b>	<b>19,220</b>	<b>31,610</b>	<b>5,114</b>	<b>877,010</b>	<b>143,540</b>	<b>28,710</b>	<b>20,090</b>	<b>6,580</b>	<b>9,120</b>	<b>39,790</b>

**Table 19 :Total Departures by Country of Residence and Border Post - 2008 (cont'd )**

Country of Residence	Selibe Phikwe air	Zanzibar	Makopong	Martins drift	Orapa	Panda matenge	Kazungula Ferry	Kasane Airport	Sowa Aiport	Phitshane molopo	Bray	Ramatlabana	Pioneer Gate	Jwaneng
<b>Africa</b>														
Zimbabwe	5	44	1	9,930	-	390	4,750	83	-	120	1	2,750	2,170	3
South Africa	173	2,134	808	105,150	231	480	14,260	1,015	655	5,940	2,728	90,740	76,560	123
Botswana	94	680	82	16,040	82	77	9,420	1,246	188	440	992	14,710	13,620	18
Zambia	-	14	-	26,260	5	6	205,380	53	1	-	4	650	690	2
Namibia	-	1	4	1,460	-	5	940	176	-	10	13	3,200	24,310	-
Lesotho	-	-	-	140	-	6	180	6	-	-	-	750	710	-
Swaziland	-	3	1	620	-	-	270	12	-	-	4	140	340	-
Malawi	-	1	-	420	-	-	770	3	-	-	-	210	360	-
Mozambique	-	2	-	350	-	-	130	5	-	-	1	90	230	-
Kenya	-	1	-	140	-	-	570	4	-	-	-	100	10	-
Tanzania	-	-	-	220	-	-	980	11	3	-	-	20	10	-

Uganda	-	-	-	20	-	-	110	5	-	-	-	50	60	-
DRC	-	-	-	70	-	-	270	1	-	-	-	10	-	-
Nigeria	-	-	-	-	-	-	-	3	-	-	-	40	10	-
Angola	-	-	1	-	-	-	20	42	-	-	-	-	70	4
Mauritius	-	-	-	20	-	-	10	2	-	-	-	20	20	-
Egypt	-	-	-	20	-	-	50	2	-	-	-	-	10	-
Ghana	-	-	-	10	-	-	-	3	-	-	-	-	10	-
Ethiopia	-	-	-	-	-	-	-	2	-	-	-	-	-	-
Madagascar	-	-	-	-	-	-	10	1	-	-	-	-	-	-
Rwanda	-	-	-	-	-	-	20	2	-	-	-	-	-	-
Senegal	-	-	-	-	-	-	-	1	-	-	-	-	-	-
Sudan	-	-	-	10	-	-	-	-	-	-	-	-	-	-
Cameroon	-	-	-	-	-	-	-	1	-	-	-	-	-	-
Sierra leone	-	-	-	-	-	-	-	-	-	-	-	-	-	-
Gabon	-	-	-	-	-	-	-	-	-	-	-	-	-	-
Seychelles	-	-	-	10	-	-	10	1	-	-	-	-	-	-
Libya	-	-	-	-	-	-	-	-	-	-	-	-	-	-
Cote d ivoire	-	-	-	-	-	-	-	-	-	-	-	-	-	-
Somalia	-	-	-	10	-	-	30	-	-	-	-	-	-	-
Tunisia	-	-	-	-	-	-	-	1	-	-	-	-	-	-
Gambia	-	-	-	-	-	-	-	1	-	-	-	-	-	-
Togo	-	-	-	-	-	-	-	-	-	-	-	-	-	-
Other Africa	-	2	-	-	-	-	60	4	-	-	-	-	10	-
<b>America</b>														
USA	-	35	3	870	-	21	8,230	2,539	2	-	4	220	190	8
Canada	1	5	-	310	-	4	1,960	219	2	-	-	40	70	-
Brazil	-	-	-	60	-	-	110	19	-	-	-	-	20	-
Mexico	-	-	-	10	-	1	170	36	-	-	-	-	10	-
Argentina	-	-	-	40	-	-	20	6	-	-	-	10	-	-
Chile	-	-	-	-	-	-	40	15	-	-	-	-	-	-
Bermuda	-	-	-	-	-	-	20	-	-	-	-	-	-	-
Other America	-	-	-	-	-	2	80	5	-	-	-	10	-	-
<b>Europe</b>														
United Kingdom	15	70	1	1,780	1	18	6,090	733	7	-	4	240	390	15
Germany	-	17	2	1,020	-	48	3,700	346	2	-	9	120	320	2



**Table 19 :Total Departures by Country of Residence and Border Post - 2008 (cont'd )**

<b>Country of Residence</b>	<b>Selibe Phikwe air</b>	<b>Zanzibar</b>	<b>Makopong</b>	<b>Martins Drift</b>	<b>Orapa</b>	<b>Panda matenge</b>	<b>Kazungula Ferry</b>	<b>Kasane Air</b>	<b>Sowa Airport</b>	<b>Phitshane molopo</b>	<b>Bray</b>	<b>Ramatlabana</b>	<b>Pioneer Gate</b>	<b>Jwaneng</b>
<b>Europe</b>														
Netherlands	-	56	3	730	-	7	2,110	46	-	10	8	70	120	-
France	2	19	-	310	-	8	2,180	166	-	-	-	30	80	-
Italy	-	6	-	240	-	-	1,440	114	-	-	-	20	70	-
Spain	-	5	-	90	-	5	1,290	91	-	-	-	40	30	-
Switzerland	-	-	-	260	-	3	690	91	-	-	-	40	50	-
Belgiumluxenburg	-	6	-	190	-	8	640	67	-	-	-	30	10	1
Austria	-	-	-	80	-	1	430	21	-	-	-	30	20	-
Russia	7	-	-	10	-	4	1,030	30	-	-	-	10	40	-
Denmark	-	-	-	230	-	-	340	10	-	-	-	20	10	-
Sweden	-	-	-	50	-	-	240	18	-	-	-	10	60	-
Ireland	-	2	-	140	-	-	650	10	-	-	-	10	-	-
Norway	-	1	-	60	-	-	350	9	-	-	-	20	30	-
Poland	-	1	-	10	-	6	100	4	-	-	-	-	20	-
Portugal	-	3	-	40	-	-	140	21	-	-	-	20	10	-
Czechoslovakia	1	-	-	70	-	-	80	9	-	-	-	10	-	-
Finland	-	1	-	10	-	-	40	1	-	-	-	50	-	-
Greece	-	-	-	40	-	-	70	9	-	-	-	-	30	-
Ukraine	-	-	-	10	-	-	80	10	-	-	-	-	-	-
Slovakia	-	-	-	40	-	-	80	-	-	-	-	-	-	-
Hungary	-	-	-	-	-	-	60	13	-	-	-	-	-	-
Luxembourg	-	-	-	10	-	-	40	6	-	-	-	-	-	-
Yugoslavia	-	-	-	-	-	-	-	-	-	-	-	-	-	-
Bulgaria	-	-	-	-	-	-	-	-	-	-	-	10	-	-
Croatia	-	-	-	-	-	-	-	4	-	-	-	-	-	-
Lithuania	-	-	-	10	-	-	20	-	-	-	-	-	-	-
Other Europe	-	3	-	20	-	-	40	15	-	-	-	-	-	-
<b>Asia</b>														
Japan	-	-	-	40	3	-	530	8	-	-	-	10	10	1
India	-	1	-	110	1	-	120	7	-	-	-	110	190	-
China	-	-	-	20	11	-	60	3	-	-	-	10	30	4

**Table 19 :Total Departures by Country of Residence and Border Post - 2008 (cont'd )**

Country of Residence	Selibe Phikwe air	Zanzibar	Makopong	Martins Drift	Orapa	Panda matenge	Kazungula Ferry	Kasane Air	Sowa Airport	Phitshane molopo	Bray	Ramatlabana	Pioneer Gate	Jwaneng
<b>Asia</b>														
Korea	-	-	-	50	-	-	20	-	-	-	-	-	20	-
Israel	-	-	-	40	-	3	110	7	1	-	-	-	20	-
Singapore	-	-	-	40	-	-	90	20	-	-	-	-	-	-
Sri lanka	-	-	-	30	-	-	20	-	-	-	-	-	10	-
Pakistan	-	-	-	-	-	-	10	1	-	-	-	20	20	1
Malaysia	-	-	-	10	-	-	40	2	-	-	-	30	10	-
Hong kong	-	1	-	-	-	-	30	3	-	-	-	20	-	10
Bangladesh	-	-	-	-	-	-	-	-	-	-	-	90	40	-
Philipines	-	-	-	-	-	-	40	2	-	-	-	-	-	-
Taiwan	-	-	-	-	1	-	40	-	-	-	-	-	-	7
Thailand	-	-	-	10	-	-	10	-	-	-	-	-	10	-
Turkey	-	-	-	10	-	-	50	-	-	-	-	-	10	-
Indonesia	-	-	-	-	-	-	-	-	-	-	-	-	-	-
Cyprus	-	-	-	10	-	-	10	1	-	-	-	-	-	-
Other asia	-	1	1	-	-	-	20	-	-	-	-	-	-	-
<b>Oceania</b>														
Australia	3	12	4	1,230	-	20	3,000	336	-	-	8	60	70	-
New zealand	-	11	-	230	-	-	600	66	-	-	-	30	10	-
Pacific islands	-	-	-	-	-	-	-	-	-	-	-	-	-	-
Not Stated	5	58	8	1,540	3	12	1,550	26	5	120	40	230	260	1
<b>Total</b>	<b>306</b>	<b>3,196</b>	<b>919</b>	<b>171,010</b>	<b>338</b>	<b>1,135</b>	<b>277,150</b>	<b>7,851</b>	<b>866</b>	<b>6,640</b>	<b>3,816</b>	<b>115,150</b>	<b>121,490</b>	<b>200</b>

**Table 19 :Total Departures by Country of Residence and Border Post - 2008 (cont'd )**

Country of Residence	Bokspits	Boshoek	Tsabong	Kasane	Ramokgwena	Rail	Maitengwe	Matsiloje	Middlepits	Two Rivers	Limpopo Valley	Dobe	Kwando	Shakawe	Total
<b>Africa</b>															
Zimbabwe	2	-	4	210	61,690	34,810	22,880	1	3	7	24	78	-	-	<b>981,538</b>
South Africa	1,577	108	5,031	1,960	600	6,040	14,250	2,555	1,542	293	100	12	16	-	<b>654,916</b>
Botswana	174	6	414	510	660	590	1,860	326	87	12	24	3	-	-	<b>264,358</b>
Zambia	1	-	5	740	60	20	20	2	1	-	30	2	-	-	<b>258,914</b>
Namibia	54	-	21	11,160	-	10	-	4	26	2	336	82	-	-	<b>110,809</b>
Lesotho	-	-	7	-	-	-	20	111	-	-	-	-	-	-	<b>7,380</b>
Swaziland	-	-	1	-	10	-	10	-	-	-	1	-	-	-	<b>5,483</b>
Malawi	1	-	-	-	40	10	10	-	-	-	-	-	-	-	<b>5,417</b>
Mozambique	-	-	-	-	30	-	20	-	-	-	-	-	-	-	<b>3,909</b>
Kenya	-	-	-	-	-	-	-	-	-	-	-	-	-	-	<b>2,639</b>
Tanzania	-	-	-	-	-	-	-	1	2	-	1	-	-	-	<b>2,597</b>
Uganda	-	-	-	-	-	-	-	-	-	-	-	-	-	-	<b>1,106</b>
DRC	-	-	-	-	-	-	-	-	-	-	-	-	-	-	<b>781</b>
Nigeria	-	-	-	-	-	-	-	-	-	-	-	-	-	-	<b>703</b>
Angola	-	-	-	10	-	-	-	-	-	-	-	-	-	-	<b>667</b>
Mauritius	-	-	-	-	-	-	-	-	-	-	-	-	1	-	<b>521</b>
Egypt	-	-	-	-	-	-	-	-	-	-	-	-	-	-	<b>292</b>
Ghana	-	-	-	-	-	-	-	-	-	-	-	-	-	-	<b>274</b>
Ethiopia	-	-	-	-	-	-	-	-	-	-	-	-	-	-	<b>212</b>
Madagascar	-	-	-	-	-	-	-	-	-	-	-	-	-	-	<b>151</b>
Rwanda	-	-	-	-	-	-	-	-	-	-	-	-	-	-	<b>132</b>
Senegal	-	-	-	-	-	-	-	-	-	-	-	-	-	-	<b>111</b>
Sudan	-	-	-	-	-	-	-	-	-	-	-	-	-	-	<b>110</b>
Cameroon	-	-	-	-	-	-	-	-	-	-	-	-	-	-	<b>101</b>
Sierra leone	-	-	-	-	-	-	-	-	-	-	-	-	-	-	<b>91</b>
Gabon	-	-	2	-	-	-	-	-	-	-	-	-	-	-	<b>82</b>
Seychelles	-	-	-	-	-	-	-	-	-	-	-	-	-	-	<b>81</b>
Libya	-	-	-	-	-	-	-	-	-	-	-	-	-	-	<b>80</b>
Cote d ivoire	-	-	-	-	-	-	-	-	-	-	-	-	-	-	<b>70</b>
Somalia	-	-	-	-	-	-	-	-	-	-	-	-	-	-	<b>70</b>
Tunisia	-	-	-	-	-	-	-	-	-	-	-	-	-	-	<b>61</b>
Gambia	-	-	-	-	-	-	-	-	-	-	-	-	-	-	<b>51</b>
Togo	-	-	-	-	-	-	-	-	-	-	-	-	-	-	<b>50</b>
Other Africa	-	-	1	-	-	-	-	-	-	-	-	-	-	-	<b>280</b>
<b>America</b>															
USA	-	-	9	1,550	130	-	-	-	8	221	3	1,239	-	-	<b>39,372</b>
Canada	-	-	-	180	10	-	-	-	4	46	-	10	-	-	<b>6,277</b>
Brazil	-	-	-	10	-	-	-	-	-	-	-	-	-	-	<b>512</b>
Mexico	-	-	-	-	-	-	-	-	-	-	-	-	-	-	<b>429</b>
Argentina	-	-	-	10	-	-	-	-	-	-	-	1	-	-	<b>197</b>
Chile	-	-	-	-	-	-	-	-	-	-	-	-	-	-	<b>95</b>
Bermuda	-	-	-	-	-	-	-	-	-	-	-	-	-	-	<b>80</b>
Other America	1	-	-	10	20	-	-	-	-	-	-	-	1	-	<b>391</b>

**Table 19 :Total Departures by Country of Residence and Border Post - 2008 (cont'd )**

Country of Residence	Bokspits	Boshoek	Tsabong	Kasane	Ramokgwe Bana rail	Maitengwe	Matsiloje	Middlepits	Two Limpopo Rivers	Dobe	Kwando	Shakawe	Total	
<b>Europe</b>														
United Kingdom	4	-	53	1,060	160	-	90	2	22	135	17	21	1	<b>29,063</b>
Germany	11	-	42	870	110	-	-	-	92	15	73	21	5	<b>23,652</b>
Netherlands	2	-	12	90	40	-	20	-	26	23	11	-	-	<b>11,019</b>
France	2	-	3	210	10	-	-	3	17	14	5	6	-	<b>9,109</b>
Italy	21	-	5	140	-	-	-	-	17	12	3	3	-	<b>5,833</b>
Spain	2	-	1	120	-	-	10	-	1	3	10	-	-	<b>5,278</b>
Switzerland	2	-	16	280	10	-	-	-	31	29	21	8	-	<b>5,010</b>
Belgiumluxenburg	-	-	9	130	-	-	-	-	16	10	2	2	-	<b>3,406</b>
Austria	1	-	4	70	-	-	-	-	5	-	2	2	-	<b>2,093</b>
Russia	-	-	-	60	-	-	-	-	-	5	-	4	-	<b>2,016</b>
Denmark	1	-	-	110	20	-	-	-	4	19	-	4	-	<b>1,948</b>
Sweden	1	-	-	50	40	-	-	-	-	-	-	-	-	<b>1,849</b>
Ireland	-	-	2	80	-	-	-	-	-	13	-	1	-	<b>1,742</b>
Norway	-	-	-	60	20	-	-	-	2	-	-	1	-	<b>1,705</b>
Poland	-	-	-	-	-	-	-	-	1	2	-	1	-	<b>745</b>
Portugal	-	-	1	-	-	-	-	-	-	1	-	-	-	<b>719</b>
Czechoslovakia	-	-	-	30	-	-	-	-	3	-	-	-	-	<b>693</b>
Finland	-	-	-	20	-	-	-	-	-	-	-	-	-	<b>503</b>
Greece	-	-	-	-	-	-	-	-	-	2	-	-	-	<b>423</b>
Ukraine	-	-	-	20	-	-	-	-	-	-	-	2	-	<b>402</b>
Slovakia	-	-	-	-	-	-	-	-	-	-	-	-	-	<b>360</b>
Hungary	-	-	-	-	-	-	-	-	-	-	-	-	-	<b>263</b>
Luxembourg	-	-	-	10	-	-	-	-	-	-	-	-	-	<b>196</b>
Yugoslavia	-	-	-	-	-	-	-	-	-	1	-	-	-	<b>112</b>
Bulgaria	-	-	-	-	-	-	-	-	-	-	-	-	-	<b>100</b>
Croatia	-	-	-	-	-	-	-	-	-	-	-	-	-	<b>64</b>
Lithuania	-	-	-	-	-	-	-	-	-	-	-	-	-	<b>60</b>
Other Europe	-	-	1	-	-	-	-	-	-	5	1	-	-	<b>315</b>
<b>Asia</b>														
Japan	-	-	1	40	-	-	-	-	-	-	-	-	1	<b>7,778</b>
India	-	-	1	-	-	-	-	-	-	-	-	-	-	<b>2,792</b>
China	-	-	-	10	-	-	-	-	-	-	-	-	-	<b>2,458</b>
Korea	-	-	-	-	-	-	-	-	-	-	-	-	-	<b>2,000</b>
Israel	-	-	-	-	-	-	-	-	-	-	-	-	-	<b>1,131</b>
Singapore	-	-	-	-	-	-	-	-	-	4	-	2	-	<b>456</b>

**Table 19 :Total Departures by Country of Residence and Border Post - 2008 (cont'd)**

Country of Residence	Bokspits	Boshhoek	Tsabong	Kasane	Ramokgwe Bana rail	Maitengwe	Matsiloje	Middlepits	Two Rivers	Limpopo	Dobe	Kwando	Shakawe	Total
<b>Asia</b>														
Sri lanka	-	-	-	-	-	-	-	-	-	-	-	-	-	350
Pakistan	-	-	1	-	-	-	-	-	-	-	-	-	-	345
Malaysia	-	-	-	-	-	-	-	-	-	-	-	-	-	342
Hong kong	-	-	-	-	-	-	-	-	2	1	-	-	-	257
Bangladesh	-	-	-	-	-	-	-	-	-	-	-	-	-	252
Philipines	-	-	-	20	-	-	-	-	-	-	-	-	-	162
Taiwan	-	-	-	-	-	-	-	-	-	-	-	-	-	158
Thailand	-	-	-	-	-	-	-	-	-	-	-	1	-	121
Turkey	-	-	-	-	10	-	-	-	-	-	-	-	-	120
Indonesia	-	-	-	-	-	-	-	-	-	-	-	-	-	82
Cyprus	-	-	-	-	-	-	-	-	-	1	-	-	-	72
Other asia	-	-	-	10	-	-	-	-	1	-	-	1	-	244
<b>Oceania</b>														
Australia	-	-	4	340	10	-	10	-	8	16	7	1	-	12,385
New zealand	-	-	3	40	10	-	-	-	1	1	3	2	-	2,248
Pacific islands	-	-	-	-	-	-	-	-	-	-	-	-	-	10
Not Stated	75	-	116	60	910	670	570	11	14	4	31	6	-	18,861
<b>Total</b>	<b>1,932</b>	<b>114</b>	<b>5,770</b>	<b>20,280</b>	<b>64,600</b>	<b>42,150</b>	<b>39,770</b>	<b>3,016</b>	<b>1,936</b>	<b>897</b>	<b>705</b>	<b>1,518</b>	<b>23</b>	<b>2,512,692</b>

**Table 20 : Total Departures by Border Post and Month - 2008**

<b>Border Post</b>	<b>January</b>	<b>February</b>	<b>March</b>	<b>April</b>	<b>May</b>	<b>June</b>	<b>July</b>	<b>August</b>	<b>September</b>	<b>October</b>	<b>November</b>	<b>December</b>	<b>Total</b>	<b>Percent</b>
Ramokgwebana road	55,700	59,190	66,400	69,650	22,300	54,850	77,860	92,190	84,740	82,440	82,500	129,190	<b>877,010</b>	<i>34.9</i>
Kazungula ferry	18,300	18,590	22,600	27,770	10,710	25,880	29,740	28,380	25,100	24,120	21,260	24,700	<b>277,150</b>	<i>11.0</i>
Tlokweng gate	19,600	20,780	22,250	19,920	9,350	20,580	21,800	21,740	21,510	22,550	21,240	26,430	<b>247,750</b>	<i>9.9</i>
Martinsdrift	16,850	10,470	14,030	14,090	13,890	13,330	15,850	16,080	13,390	13,290	12,770	16,970	<b>171,010</b>	<i>6.8</i>
Kazungula road	8,860	8,780	10,850	11,040	12,190	11,170	12,870	14,800	12,910	14,750	11,980	13,340	<b>143,540</b>	<i>5.7</i>
Pioneer gate	11,380	8,710	10,890	10,260	9,700	9,450	11,300	9,910	8,980	9,950	9,280	11,680	<b>121,490</b>	<i>4.8</i>
Ramatlabama road	8,900	8,010	9,460	9,200	8,820	8,600	9,800	9,790	8,480	10,080	9,780	14,230	<b>115,150</b>	<i>4.6</i>
Mamono	6,610	6,120	8,600	6,690	6,840	7,430	7,030	7,970	7,020	7,320	7,480	12,000	<b>91,110</b>	<i>3.6</i>
Maitengwe	2,590	2,780	3,000	2,950	2,970	3,050	3,480	3,870	4,110	4,150	3,120	6,080	<b>42,150</b>	<i>1.7</i>
Ngoma	2,570	2,120	2,790	2,630	2,880	3,220	3,720	4,360	4,080	4,270	3,150	4,000	<b>39,790</b>	<i>1.6</i>
Matsiloje	1,200	1,710	2,790	2,750	2,640	2,610	2,900	3,910	2,070	3,390	3,080	10,720	<b>39,770</b>	<i>1.6</i>
Ramotswa	2,230	2,100	2,540	2,700	2,720	2,770	2,760	2,890	2,970	2,380	2,200	3,350	<b>31,610</b>	<i>1.3</i>
Kasane	1,170	1,350	1,320	1,620	1,670	1,700	1,980	2,030	2,070	1,860	1,690	1,820	<b>20,280</b>	<i>0.8</i>
Mohembo	1,240	-	1,190	1,360	1,600	1,550	2,750	3,020	2,060	1,930	1,730	1,660	<b>20,090</b>	<i>0.8</i>
Sikwane	1,900	1,200	1,750	1,520	1,400	1,600	1,130	1,560	2,270	1,440	1,450	2,000	<b>19,220</b>	<i>0.8</i>
Parrshalt	2,490	870	1,660	1,280	1,500	1,250	1,300	1,350	1,110	1,080	940	1,470	<b>16,300</b>	<i>0.6</i>
Pointdrift	510	550	680	650	410	700	900	1,430	920	860	780	730	<b>9,120</b>	<i>0.4</i>
Phitshane molopo	400	320	330	370	660	590	490	540	580	620	850	890	<b>6,640</b>	<i>0.3</i>
Plaatjan	370	220	460	690	850	610	660	610	500	510	460	640	<b>6,580</b>	<i>0.3</i>
Tsabong	441	320	359	584	544	455	595	577	394	616	344	541	<b>5,770</b>	<i>0.2</i>
Bray	332	295	364	322	311	333	358	303	248	377	221	352	<b>3,816</b>	<i>0.2</i>
Zanzibar	-	11	60	102	325	333	414	472	410	406	315	348	<b>3,196</b>	<i>0.1</i>
Middlepits	236	114	273	247	190	187	290	270	313	242	314	340	<b>3,016</b>	<i>0.1</i>
Two rivers	179	-	164	204	251	141	173	173	205	162	54	230	<b>1,936</b>	<i>0.1</i>
Bokspits	172	109	154	194	145	122	209	158	168	131	166	204	<b>1,932</b>	<i>0.1</i>
Kwando	-	-	-	106	-	-	318	117	327	329	185	136	<b>1,518</b>	<i>0.1</i>
Pandamatenge	40	35	98	116	94	59	100	161	148	136	85	63	<b>1,135</b>	<i>0.0</i>
Makopong	76	75	74	96	128	77	93	65	67	62	33	73	<b>919</b>	<i>0.0</i>
Dobe	62	12	91	89	63	91	95	109	21	49	23	-	<b>705</b>	<i>0.0</i>
Boshhoek	31	47	7	5	2	22	-	-	-	-	-	-	<b>114</b>	<i>0.0</i>

**Table 20 : Total Departures by Border Post and Month – 2008 (cont'd)**

Border Post	January	February	March	April	May	June	July	August	September	October	November	December	Total	Percent
Sir Seretse khama Air	4,920	6,350	6,740	7,610	6,900	7,040	7,070	7,600	7,620	7,410	7,550	7,160	<b>83,970</b>	3.3
Maun airport	1,390	1,300	1,930	2,190	2,740	2,530	3,090	3,270	3,000	3,080	2,660	1,530	<b>28,710</b>	1.1
Kasane airport	343	399	586	481	904	1,052	772	798	998	731	472	315	<b>7,851</b>	0.3
Francistown airport	364	452	503	602	533	493	499	422	423	365	269	189	<b>5,114</b>	0.2
Limpopo valley	38	72	94	70	101	73	97	132	62	83	41	34	<b>897</b>	0.0
Sowa Airport	46	84	65	90	80	70	70	77	68	72	80	64	<b>866</b>	0.0
Orapa	22	25	36	40	34	-	15	76	40	30	13	7	<b>338</b>	0.0
Selibephikwe airport	16	21	36	31	40	15	33	36	26	27	19	6	<b>306</b>	0.0
Jwaneng	29	26	-	17	11	38	14	16	34	5	8	2	<b>200</b>	0.0
Shakawe	-	-	-	17	-	-	-	-	-	6	-	-	<b>23</b>	0.0
Ramokgwebana rail	4,720	4,550	5,460	4,640	6,200		6,220	6,960	6,460	6,410	6,420	6,560	<b>64,600</b>	2.6
<b>Total</b>	<b>176,327</b>	<b>168,167</b>	<b>200,684</b>	<b>204,993</b>	<b>132,696</b>	<b>184,071</b>	<b>228,845</b>	<b>248,222</b>	<b>225,902</b>	<b>227,719</b>	<b>215,012</b>	<b>300,054</b>	<b>2,512,692</b>	<b>100.0</b>

**Table 21 : Total Departures by Month and Mode of Travel - 2008**

Month	Rail	Road	Air	Total
January	4,720	164,439	7,168	<b>176,327</b>
February	4,550	154,888	8,729	<b>168,167</b>
March	5,460	185,234	9,990	<b>200,684</b>
April	4,640	189,205	11,148	<b>204,993</b>
May	6,200	115,153	11,343	<b>132,696</b>
June	-	172,760	11,311	<b>184,071</b>
July	6,220	210,965	11,660	<b>228,845</b>
August	6,960	228,835	12,427	<b>248,222</b>
September	6,460	207,171	12,271	<b>225,902</b>
October	6,410	209,500	11,809	<b>227,719</b>
November	6,420	197,480	11,112	<b>215,012</b>
December	6,560	284,187	9,307	<b>300,054</b>
<b>Total</b>	<b>64,600</b>	<b>2,319,817</b>	<b>128,275</b>	<b>2,512,692</b>
<i>Percent</i>	2.6	92.3	5.1	100.0

**Table 22: Total Departure by Month and Quarter for Year 1998 - 2008**

<b>Month</b>	<b>1998</b>	<b>1999</b>	<b>2000</b>	<b>2001</b>	<b>2002</b>	<b>2003</b>	<b>2004</b>	<b>2005</b>	<b>2006</b>	<b>2007</b>	<b>2008</b>
<b>January</b>	90,581	137,411	130,783	124,386	135,564	132,168	154,189	125,322	138,007	144,241	176,327
<b>February</b>	89,974	123,439	184,173	116,409	133,508	130,164	154,750	97,624	101,897	124,953	168,167
<b>March</b>	108,862	140,819	124,593	125,605	152,915	158,206	156,379	175,272	172,999	154,247	200,684
<b>1 st Quarter</b>	289,417	401,669	439,549	366,400	421,987	420,538	465,318	398,218	412,903	423,441	545,178
<b>April</b>	135,830	163,467	144,445	146,188	154,853	175,163	182,473	159,855	188,213	175,179	204,993
<b>May</b>	113,547	142,406	178,797	128,967	149,328	162,087	156,294	128,232	123,268	126,965	132,696
<b>June</b>	97,554	145,288	133,602	144,035	147,076	169,938	158,025	131,767	149,815	161,315	184,071
<b>2 nd Quarter</b>	346,931	451,161	456,844	419,190	451,257	507,188	496,792	419,854	461,296	463,459	521,760
<b>July</b>	134,609	137,745	177,433	129,974	160,204	190,433	192,007	155,171	171,803	183,623	228,845
<b>August</b>	143,413	134,947	269,868	156,084	169,611	183,856	179,603	163,334	166,127	205,868	248,222
<b>September</b>	101,454	132,362	146,139	155,510	156,413	176,346	167,824	201,532	226,891	202,955	225,902
<b>3 rd Quarter</b>	379,476	405,054	593,440	441,568	486,228	550,635	539,434	520,037	564,821	592,446	702,969
<b>October</b>	97,710	154,611	317,394	152,681	154,666	170,608	161,109	122,109	141,152	188,030	227,719
<b>November</b>	94,728	98,626	173,657	143,511	152,303	158,922	155,095	132,087	156,185	169,362	215,012
<b>December</b>	130,469	155,092	261,182	200,422	190,435	221,321	211,868	275,360	249,501	290,164	300,054
<b>4 th Quarter</b>	322,907	408,329	752,233	496,614	497,404	550,851	528,072	529,556	546,838	647,556	742,785
<b>Total</b>	<b>1,338,731</b>	<b>1,666,213</b>	<b>2,242,066</b>	<b>1,723,772</b>	<b>1,856,876</b>	<b>2,029,212</b>	<b>2,029,616</b>	<b>1,867,665</b>	<b>1,985,858</b>	<b>2,126,902</b>	<b>2,512,692</b>