

TOURISM STATISTICS 2009

Published By

**Statistics Botswana
Private Bag 0024, Gaborone
Website: www.cso.gov.bw
E-mail: csobots@gov.bw**

**Contact: Demography Unit
Contact Statistician
Tel: (267) 3934968 / (267)3190718
Fax: (267) 3952201/ 3935628**

**Printed by and obtainable from
Department of Printing and Publishing Services,
Private Bag 0081
Gaborone
Tel: (267) 3953202, Fax: (267) 3959392**

July, 2012

COPYRIGHT RESERVED

**Extracts may be published if source
is duly acknowledged**

PREFACE

This is an annual publication of Statistics Botswana. The information contained in this publication is compiled from the completed Immigration Arrival/Departure forms.

Travelers leaving and entering Botswana are required to complete arrival and departure forms at all gazetted points of entry/departure. In case of those immigration posts handling heavy passenger traffic, recording more than 400 arrivals/departures a month, a ten percent sample of forms is selected for analysis and the resulting figures are finally grossed up accordingly. Forms from boarders with low passenger traffic are not sampled but a 100 percent analysis is done. Botswana citizens are exempted from completing immigration forms. The figures on arrivals and departures contained in this publication therefore cover only non-citizens, both visitors and temporary residents of Botswana.

It is important for the Immigration Department to ensure that the arrival/departure forms are completed properly and by all, as this will help to improve the quality of data.

Users who require more information can contact the Demography Unit of Statistics Botswana at the address on the copyright page.



A. N. Majelantle

Ag Statistician General
July 2012

TABLE OF CONTENTS

PREFACE	i
TABLE OF CONTENTS	iii
<i>EXECUTIVE SUMMARY</i>	1
1.0 Introduction	1
2.0 Arrangement of Tables	1
3.0 Total Arrivals	1
3.1 Arrivals by Nationality	2
3.2 Arrivals by Purpose of Entry	2
3.3 Distribution of Arrivals by Sex and Age group	3
3.4 Arrivals by Border Post	4
3.5 Month of Arrival	4
3.6 Mode of Travel	5
4.0 Total Departures	5
4.1 Departures by Nationality	5
4.2 Departures by Age	6
4.3 Departures by Month, Mode of Travel and Border	6

List of Tables

Table 1: Total Arrivals by Nationality and Sex	7
Table 2 : Total Arrivals by Country of Residence , Sex	10
Table 3: Total Arrivals by Nationality and purpose of entry	13
Table 4: Total Arrivals by Country of Residence and Purpose of Entry	18
Table 5: Total Arrivals by Purpose of Entry and Age-group	23
Table 6: Total Arrivals by Country of Residence and Age-Group	24
Table7: Total Arrivals by Nationality and Age-Group	28
Table 8 : Total Arrivals by Nationality and Month	33
Table 9: Total Arrivals by Country of Residence and Month	35
Table 10: Total Arrivals by Boarder Post and Continent of nationality	37
Table 11: Total Arrivals by Boarder Post and Month of Arrival	38
Table 12: Total Arrivals by Month of Arrival and mode of travel	40
Table 13: Total Arrivals by Month and Quarter	41
Table 14 : Total Departures by nationality and sex	42
Table 15 : Total Departures by Country of Residence and sex	45
Table 16: Total departures by Nationality and Age group	48
Table 17: Total departures by Country of residence and Age group	53
Table 18: Total Departure by Station, mode of travel and Month	58
Table 19 : Total Departures by month and mode of travel	60

EXECUTIVE SUMMARY

1.0 Introduction

Tourism Statistics Report is an annual publication containing statistics of non-citizens entering and leaving the country. Country of residence, nationality, purpose of entry, mode of travel, point of entry/departure or border post, age and sex classify the statistics compiled in this report. This information is collected through the border posts from the departure/entry forms, completed by persons crossing the border. It is worth noting that only non-citizens fill this form, as citizens are exempted from filling it.

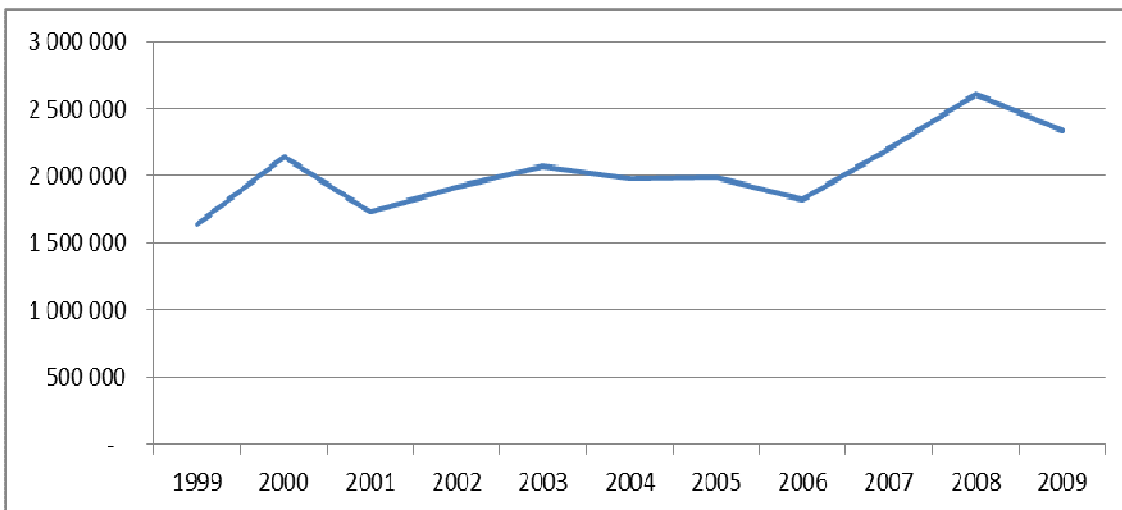
2.0 Arrangement of Tables

Tables in this publication deal with two categories of arrivals and departures; Tables 1 to 13 show information on arrivals, while Tables 14 to 19 provides information on departures.

3.0 Total Arrivals

The number of arrivals in 2009 was 2, 336,288, reflecting a decrease of 10.4 percent from 2,608,886 in the year 2008 (Table 1). Chart 1 shows arrival trends from 1999 up to 2009. The arrivals lingered around 2,000,000 from 1999 to 2007 after which there was a gradual increase in 2007 into 2008 followed by a drop in 2009.

Chart 1: Total Arrivals 1999 – 2009



3.1 Arrivals by Nationality

Most arrivals, constituting 89.0 percent of all arrivals, were from the continent of Africa. Europe accounted for 6 percent, followed by America and Asia by 2 percent each and the lowest percentage arrivals (0.64 percent) were from the Oceania.

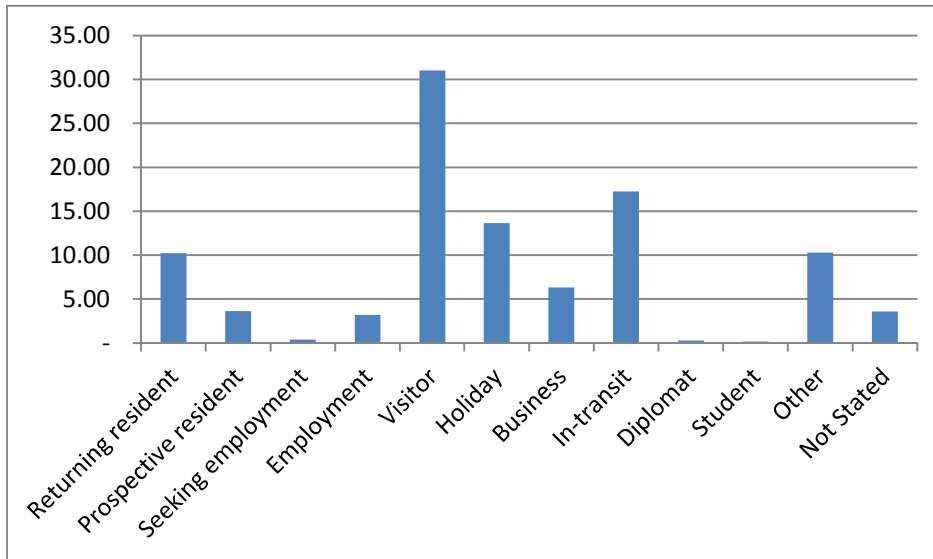
Zimbabwean nationals constituted the highest percentage (46 percent) of all persons entering Botswana in 2009, followed by South Africa (31.1 percent), Zambia (7.5 percent) and Namibia (5.1 percent). The remaining African countries accounted for less than 1 percent each of the total arrivals. (Table1).

3.2 Arrivals by Purpose of Entry

Chart 2 indicates that of all the arrivals in the country, 31.0 percent declared their reason for entry as visiting, followed by those who were in transit (17.3 percent). Those on holiday constituted 13.7 percent of all arrivals. Only 6 percent came for business while 0.4 percent came as job seekers. More males than females entered the country for different reasons.

Of the total arrivals, 46 percent were Zimbabwean nationals. Of these 47.2 percent came as visitor, 10.3 percent were returning residents, about 6 percent were on holiday and less than 1 percent were job seekers. South African nationals entering the country constituted 31.2 percent of all arrivals of which a quarter came as visitors, 15.4 percent were on holiday while 10 percent were on business.

Chart 2: Percentage of Arrivals by Purpose of Entry - 2009

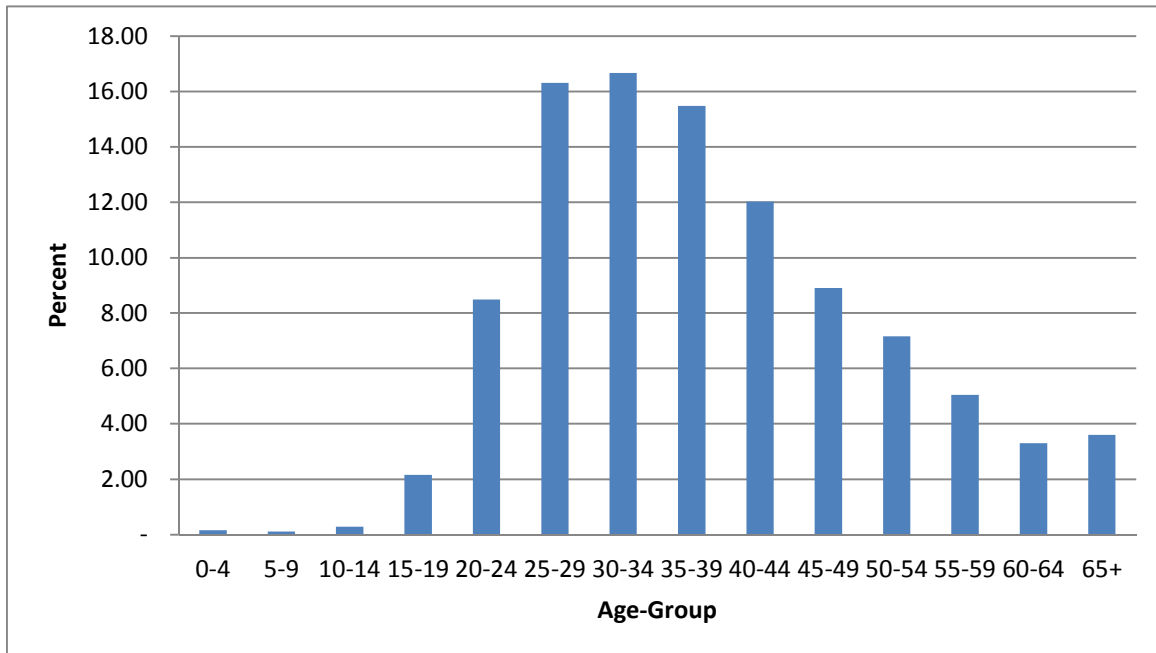


3.3 Distribution of Arrivals by Sex and Age group

Generally there were more male arrivals (1,432,291) compared to their female counterpart (903,997). About 60 percent of all arrivals in 2009 were males (Table 1). Africa and Asia had a high sex differential in arrivals as 62 percent of all arrivals from Africa and 66 percent from Asia were males. Europe followed with 55 percent of its arrivals being males. Males from America and Oceania constituted 48.3 and 51.5 percent of arrivals respectively.

Chart 3 shows that most arrivals in 2009 were in the age groups 25-29 (16.3 percent), 30-34 (16.7 percent), 35-39 (15.5 percent) and 40-44 (12.0 percent). All other age groups recorded less than 10 percent of the total arrivals.

Chart 3: Percentage of Total Arrivals by Age Group - 2009



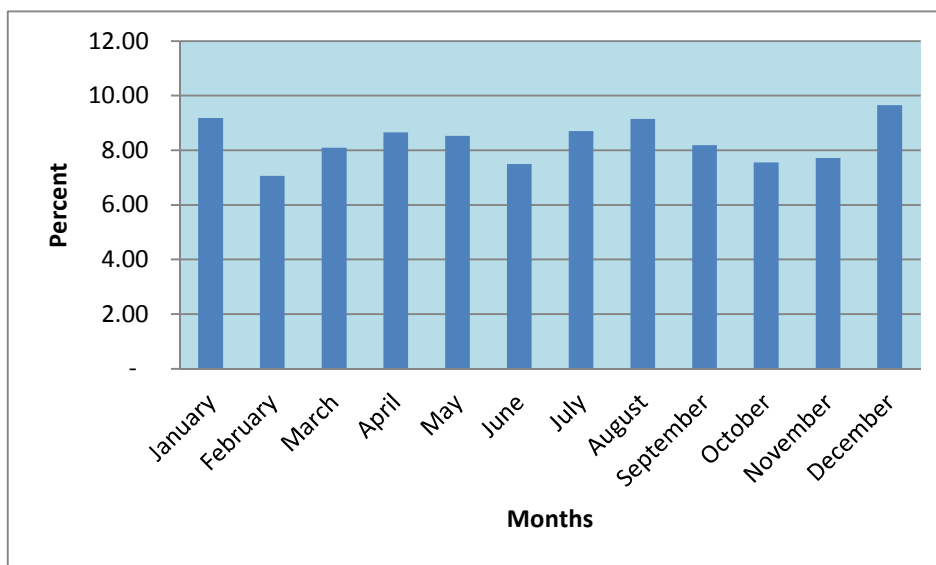
3.4 Arrivals by Border Post

Ramokgwebana border was the busiest of all the borders receiving 814,840 arrivals in 2009, followed by Tlokweng gate by 264,770 (11.3 percent), Kazungula Ferry with 176,330 (7.6 percent), Martins Drift and Pioneer both with 6.3 percent and Ramatlabama border with 5.8 percent. The remaining borders received less than 5 percent of all the arrivals in 2009 (Table 10).

3.5 Month of Arrival

Generally arrivals were well distributed amongst the months of the year. Chart 4 shows that December was the busiest month of arrival with 225,390 (9.7 percent) persons entering the country. It was followed closely by January and August, both receiving 9.2 percent of the total arrivals. The remaining months received arrivals ranging from 7.5 percent to 9.0 percent of the total arrivals (Table 8).

Chart 4: Total Arrivals by Month of Arrivals - 2009



3.6 Mode of Travel

The most common mode of travel is road which was used by 94.0 percent of all persons entering the country (Table 12). This is attributable to the fact that most of the entry points are accessed by road since Botswana is a landlocked country. About 5.0 percent of arrivals were by air and less than a percent of the arrivals used rail.

4.0 Total Departures

A total of 2,340,341 departures were recorded in 2009 (Table 14), a decrease of 6.9 percent from the 2008 departure figure of about 2,512,692. The 2008 figure shows that there were more arrivals than departures. Out of all departures, males constituted the highest proportion of 61.5 percent compared to their female counterparts.

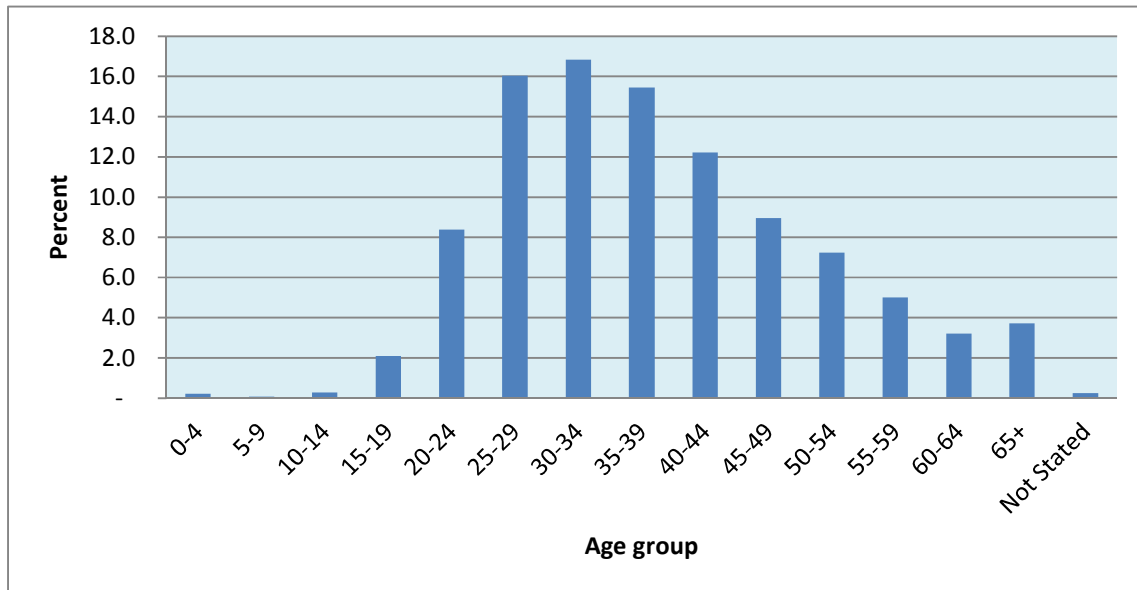
4.1 Departures by Nationality

Departures from Botswana were mostly Southern Africa nationals, with Zimbabwe constituting the highest percentage (43.2 percent) followed by South Africa (31.1 percent), Zambia (7.5 percent) and Namibia (4.9 percent) (Table 14). Departures of European countries nationality accounted for 5.9 percent of all departures, followed by those of American (2 percent), Asian (1.9 percent) and Oceania (0.7 percent) nationalities.

4.2 Departures by Age

A similar pattern to arrivals with regard to age is observed in the departures. The age-groups 25-29, 30-34, 35-39 and 40-44 were more represented accounting for 16.0, 16.8, 15.5 and 12.2 percent of all the departures respectively. This is so because almost the same people who entered the country are bound to depart at one point in time.

Chart 5: Percentage of Total Departure by Age Group - 2009



4.3 Departures by Month, Mode of Travel and Border

The month of December recorded the highest departures (257,746) accounting for 11.0 of all departures, followed by July and August each recording 9 percent of the departures. The lowest number of departures was recorded in February accounting for 6.5 percent of all the departures.

The road is the most commonly used mode of travel used to enter and leave the country. About 93 percent of the departures were by road followed by air (5 percent) and rail was used by less than 2 percent of travellers departing the country.

Ramokgwebana was the busiest of the borders recording 35.6 percent of the total departures. It was followed by Tlokweng gate with 11.5 percent and the rest of the borders recorded less than 10 percent of the departures each.

Table 1: Total Arrivals by Nationality and Sex - 2009

Country of Residence	Male	Female	Total
Africa	1 287 495	788 801	2 076 296
Zimbabwe	526 334	466 965	993 299
Republic of South Africa	522 394	206 069	728 463
Zambia	111 845	62 903	174 748
Namibia	83 549	35 316	118 865
Malawi	9 460	3 594	13 054
Lesotho	3 770	3 229	6 999
Kenya	5 026	1 763	6 789
Mozambique	4 966	1 514	6 480
Swaziland	4 415	1 490	5 905
Tanzania	3 722	1 595	5 317
Nigeria	2 399	792	3 191
Uganda	1 898	692	2 590
DRC	1 763	605	2 368
Mauritius	1 022	521	1 543
Ghana	809	333	1 142
Angola	522	331	853
Ethiopia	565	260	825
Egypt	443	131	574
Cameroon	192	80	272
Somalia	210	-	210
Sierra leone	120	70	190
Senegal	161	10	171
Sychelles	81	80	161
Libya	130	20	150
Madagascar	110	30	140
Sudan	114	13	127
Rwanda	60	30	90
Reunion	70	20	90
Guinea	60	10	70
Cote d ivore	51	11	62
Benin	50	10	60
Algeria	50	-	50
Tunisia	30	20	50
Burkina faso	40	10	50
Togo	40	10	50
Gambia	43	2	45
Morocco	30	11	41
Comoro	10	30	40
Other Africa	951	231	1 182

Table 1: Total Arrivals by Nationality and Sex - 2009 (Cont'd)

Country of Residence	Male	Female	Total
America	23 220	24 811	48 031
United States America	18 471	20 347	38 818
Canada	3 422	3 462	6 884
Brazil	350	214	564
Argentina	191	183	374
Jamaica	130	120	250
Mexico	128	117	245
Cuba	130	50	180
Trinidad	70	40	110
Belize	63	43	106
Colombia	71	30	101
Chile	41	21	62
Peru	11	50	61
Paraguay	20	20	40
Venezuela	40	-	40
Other America	82	114	196
Europe	77 702	64 270	141 972
United Kingdom	26 854	20 023	46 877
Germany	13 860	12 644	26 504
Netherlands	7 129	7 091	14 220
France	5 740	4 316	10 056
Italy	3 565	3 133	6 698
Spain	2 726	2 420	5 146
Switzerland	2 599	2 412	5 011
Belgiumluxenburg	2 387	1 712	4 099
Ireland	1 706	1 289	2 995
Denmark	1 342	1 552	2 894
Austria	1 622	1 081	2 703
Sweden	1 347	1 134	2 481
Portugal	1 384	760	2 144
Norway	971	1 036	2 007
Russia	1 031	970	2 001
Poland	592	454	1 046
Finland	335	496	831
Yugoslavia	511	201	712
Czechoslovakia	358	284	642
Bulgaria	262	161	423
Greece	263	152	415
Hungary	212	161	373
Romania	153	162	315
Slovakia	120	141	261
Croatia	130	80	210
Ukraine	102	91	193

Table 1: Total Arrivals by Nationality and Sex - 2009 (Cont'd)

Country of Residence	Male	Female	Total
Luxembourg	40	40	80
Latvia	30	42	72
Estonia	21	30	51
Iceland	30	10	40
Lithuania	20	20	40
Other Europe	260	172	432
Asia	30 710	15 881	46 591
India	13 236	5 461	18 697
China	6 095	2 303	8 398
Japan	3 307	4 310	7 617
Pakistan	1 793	544	2 337
Sri lanka	1 389	582	1 971
Korea	861	910	1 771
Bangladesh	1 336	224	1 560
Israel	907	413	1 320
Malaysia	280	150	430
Singapore	261	143	404
Philippines	118	164	282
Lebanon	230	10	240
Hong kong	130	81	211
Taiwan	130	60	190
Cyprus	120	61	181
Turkey	90	72	162
Thailand	45	91	136
Iran	72	42	114
Myanmar	60	40	100
Vietnam	40	40	80
Indonesia	40	30	70
Jordan	30	20	50
Other Asia	130	130	260
Oceania	7 692	7 230	14 922
Australia	6 067	5 955	12 022
New zealand	1 585	1 265	2 850
Other Oceania	40	10	50
Not Stated	5 472	3 004	8 476
Total Arrivals	1 432 291	903 997	2 336 288

Table 2 : Total Arrivals by Country of Residence , Sex - Year 2009

	Male	Female	Total
Africa	1 311 658	800 234	2 111 892
Zimbabwe	413 929	425 418	839 347
Republic of South Africa	502 815	183 616	686 431
Botswana	183 838	87 255	271 093
Zambia	101 038	57 351	158 389
Namibia	85 591	36 927	122 518
Lesotho	2 956	2 520	5 476
Malawi	4 006	1 392	5 398
Swaziland	4 032	1 322	5 354
Mozambique	3 374	884	4 258
Tanzania	2 342	881	3 223
Kenya	2 285	764	3 049
Democratic Republic of Congo	1 220	333	1 553
Uganda	966	360	1 326
Angola	502	245	747
Mauritius	530	191	721
Nigeria	477	170	647
Ghana	252	101	353
Ethiopia	221	50	271
Egypt	191	70	261
Madagascar	90	70	160
Cameroon	112	30	142
Rwanda	90	31	121
Senegal	93	20	113
Tunisia	70	30	100
Sychelles	42	50	92
Libya	70	20	90
Sudan	41	10	51
Morocco	40	10	50
Benin	40	10	50
Sierra leone	40	10	50
Reunion	30	10	40
Somalia	40	-	40
Other Africa	295	83	378

Table 2 : Total Arrivals by Country of Residence , Sex - Year 2009 (Cont'd)

	Male	Female	Total
America	19 994	21 669	41 663
United States America	16 469	18 070	34 539
Canada	2 776	2 978	5 754
Brazil	250	146	396
Argentina	111	132	243
Mexico	89	77	166
Cuba	51	30	81
Jamaica	30	50	80
Chile	33	31	64
Trinidad	50	11	61
Colombia	20	20	40
Peru	10	30	40
Other America	105	84	189
Europe	56 457	50 769	107 226
United Kingdom	15 123	13 210	28 333
Germany	11 801	11 103	22 904
Netherlands	6 074	6 082	12 156
France	4 785	3 694	8 479
Italy	2 796	2 690	5 486
Spain	2 594	2 299	4 893
Switzerland	2 477	2 281	4 758
Belgiumluxenburg	1 918	1 346	3 264
Denmark	1 033	1 178	2 211
Austria	1 200	958	2 158
Sweden	1 130	981	2 111
Norway	828	955	1 783
Ireland	933	838	1 771
Russia	850	829	1 679
Portugal	791	444	1 235
Poland	399	382	781
Finland	245	414	659
Czechoslovakia	297	254	551
Hungary	211	142	353
Romania	123	141	264
Greece	155	74	229
Slovakia	90	80	170
Ukraine	112	51	163
Luxembourg	60	90	150
Croatia	60	50	110
Bulgaria	70	21	91
Latvia	40	10	50
Lithuania	30	10	40
Yugoslavia	40	-	40
Other Europe	192	162	354

Table 2 : Total Arrivals by Country of Residence , Sex - Year 2009 (Cont'd)

	Male	Female	Total
Asia	12 214	8 494	20 708
Japan	2 919	4 067	6 986
India	3 102	1 191	4 293
China	2 851	1 126	3 977
Korea	510	650	1 160
Israel	607	294	901
Pakistan	295	181	476
Malaysia	280	140	420
Singapore	254	147	401
Sri lanka	241	70	311
Bangladesh	283	23	306
Hong kong	163	116	279
Turkey	92	83	175
Philippines	78	47	125
Taiwan	70	40	110
Thailand	35	60	95
Lebanon	60	20	80
Cyprus	50	21	71
Iran	40	31	71
Vietnam	41	11	52
Indonesia	21	20	41
Jordan	30	10	40
Saudi arabia	20	20	40
Other Asia	172	126	298
Oceania	6 336	6 751	13 087
Australia	5 408	5 611	11 019
New zealand	918	1 140	2 058
Other Oceania	10	-	10
Not Stated	25 632	16 080	41 712
Total Arrivals	1 432 291	903 997	2 336 288

Table 3: Total Arrivals by Nationality and purpose of entry - 2009

Nationality	PURPOSE OF ENTRY												Total
	Returning resident	Prospective resident	Seeking employment	Employment	Visitor	Holiday	Business	In-transit	Diplomat	Student	Other	Not Stated	
Africa	196 031	80 763	7 638	43 604	705 921	199 869	138 287	388 054	5 175	3 082	229 963	77 909	2 076 296
Zimbabwe	102 009	40 414	2 357	20 959	469 249	60 649	46 780	82 394	1 542	1 120	133 729	32 097	993 299
South Africa	62 506	25 526	4 116	18 809	178 833	109 538	73 450	165 198	1 681	781	52 868	35 157	728 463
Zambia	13 183	6 981	480	1 534	32 904	18 886	11 500	55 638	570	400	27 661	5 011	174 748
Namibia	1 541	5 464	485	836	11 844	3 901	2 914	77 589	352	141	10 681	3 117	118 865
Malawi	2 896	520	30	250	3 884	1 272	551	1 880	70	100	1 211	390	13 054
Lesotho	1 150	330	50	230	2 168	973	621	401	140	90	543	303	6 999
Kenya	2 911	250	50	232	1 053	799	232	450	50	60	520	182	6 789
Mozambique	830	361	-	90	1 811	730	384	1 232	90	30	651	271	6 480
Swaziland	574	261	10	260	986	890	841	1 270	70	120	372	251	5 905
Tanzania	1 563	203	50	60	847	525	254	1 071	60	50	362	272	5 317
Nigeria	2 136	51	-	50	331	130	80	20	40	40	201	112	3 191
Uganda	721	220	-	21	720	261	112	141	20	30	210	134	2 590
DRC	807	100	-	81	192	182	64	530	40	40	202	130	2 368
Mauritius	594	10	-	31	233	230	102	-	40	-	212	91	1 543
Ghana	687	21	-	10	112	100	52	-	20	20	90	30	1 142
Angola	140	-	10	-	130	171	41	140	60	-	120	41	853
Ethiopia	474	30	-	10	60	111	20	10	20	10	40	40	825
Egypt	224	-	-	20	100	50	40	10	10	-	40	80	574
Cameroon	110	-	-	-	40	40	2	-	10	10	40	20	272
Somalia	130	10	-	-	30	20	10	-	-	-	-	-	200
Sierra leone	70	-	-	10	10	10	40	-	10	20	10	10	190
Senegal	10	-	-	10	11	50	30	10	20	-	-	30	171
Seychelles	20	1	-	-	20	60	10	-	20	-	20	10	161
Libya	40	-	-	-	30	40	20	-	-	-	20	-	150
Madagascar	-	-	-	10	10	40	-	20	30	-	30	-	140
Sudan	104	-	-	1	2	-	10	-	-	-	-	10	127

Table 3: Total Arrivals by Nationality and purpose of entry - 2009 (cont'd)

	P U R P O S E O F E N T R Y												Total
	Returning	Prospective	Seeking		Visitor	Holiday	Business	In-transit	Diplomat	Student	Other	Not Stated	
	resident	resident	employment	Employment									
Rwanda	-	-	-	-	10	10	20	-	-	-	30	20	90
Reunion	20	10	-	10	20	10	10	-	-	-	10	-	90
Guinea	30	-	-	-	10	-	-	10	10	-	10	-	70
Cote d ivoire	30	-	-	-	-	20	2	-	-	-	10	-	62
Benin	-	-	-	-	10	-	10	-	10	-	30	-	60
Algeria	10	-	-	-	-	40	-	-	-	-	-	-	50
Tunisia	-	-	-	10	20	10	10	-	-	-	-	-	50
Burkina faso	-	-	-	-	20	10	-	-	-	-	10	10	50
Togo	-	-	-	-	10	20	20	-	-	-	-	-	50
Other Africa	511	-	-	70	211	91	55	40	190	20	30	90	1 308
America	4 345	965	324	7 424	2 667	26 453	1 360	1 854	362	332	1 288	657	48 031
USA	2 983	835	264	6 108	2 018	21 880	1 137	1 494	282	262	1 038	517	38 818
Canada	861	80	45	1 103	386	3 684	168	200	50	60	178	69	6 884
Brazil	80	30	-	51	41	259	33	50	10	-	10	-	564
Argentina	91	-	1	41	50	130	1	10	-	-	20	30	374
Jamaica	110	10	-	10	40	50	-	-	-	-	10	20	250
Mexico	-	-	4	41	10	160	-	30	-	-	-	-	245
Cuba	60	-	-	20	40	20	-	10	20	-	10	-	180
Trinidad	60	-	-	10	-	20	10	-	-	-	10	-	110
Belize	-	-	-	10	22	13	-	60	-	-	1	-	106
Colombia	10	-	-	10	20	61	-	-	-	-	-	-	101
Chile	-	-	10	20	-	11	1	-	-	10	-	10	62
Peru	20	-	-	-	10	31	-	-	-	-	-	-	61
Other America	70	10	-	-	30	134	10	-	-	-	11	11	276

Table 3: Total Arrivals by Nationality and purpose of entry - 2009 (cont'd)

	P U R P O S E O F E N T R Y												Total
	Returning	Prospective	Seeking		Visitor	Holiday	Business	In-transit	Diplomat	Student	Other	Not Stated	
	resident	resident	employment	Employment									
Europe	16 730	1 568	684	18 536	8 669	72 022	4 931	11 280	364	332	3 967	2 889	141 972
United Kingdom	10 171	566	190	3 584	4 359	20 351	2 599	2 900	43	61	1 230	823	46 877
Germany	1 159	321	236	4 671	856	14 140	346	3 420	103	60	683	509	26 504
Netherlands	637	111	32	2 686	598	8 167	254	990	11	10	355	369	14 220
France	581	82	23	1 592	519	5 718	420	482	51	10	331	247	10 056
Italy	425	52	26	857	217	4 274	114	481	10	-	103	139	6 698
Spain	80	30	12	716	131	3 597	83	353	1	-	91	52	5 146
Switzerland	207	64	26	931	144	2 852	103	446	2	10	98	128	5 011
Belgiumlux	301	21	10	596	272	2 224	104	314	40	30	105	82	4 099
Ireland	571	40	21	274	230	1 403	127	204	21	10	83	11	2 995
Denmark	204	30	-	454	161	1 461	80	311	-	-	122	71	2 894
Austria	196	20	42	483	151	1 401	64	261	-	-	52	33	2 703
Sweden	182	30	10	404	132	1 126	132	181	10	50	153	71	2 481
Portugal	380	40	1	141	224	709	140	264	-	-	155	90	2 144
Norway	122	30	14	261	111	1 187	81	30	10	51	80	30	2 007
Russia	130	30	10	285	170	880	82	220	51	-	75	68	2 001
Poland	121	20	-	171	100	441	-	111	-	-	70	12	1 046
Finland	70	30	20	102	2	455	41	50	11	30	20	-	831
Yugoslavia	500	30	-	20	50	50	20	2	-	-	30	10	712
Czechoslovakia	50	1	-	133	21	315	11	60	-	-	10	41	642
Bulgaria	210	10	10	12	71	70	-	20	-	-	-	20	423
Greece	80	10	-	40	30	175	10	20	-	-	20	30	415
Hungary	-	-	-	21	50	210	20	40	-	-	11	21	373
Romania	-	-	1	30	-	173	20	60	-	10	10	11	315
Slovakia	41	-	-	10	20	130	-	10	-	-	40	10	261
Croatia	90	-	-	-	20	70	10	-	-	-	20	-	210
Ukraine	40	-	-	10	-	122	10	-	-	-	10	1	193
Luxembourg	-	-	-	10	10	50	10	-	-	-	-	-	80

Table 3: Total Arrivals by Nationality and purpose of entry - 2009 (cont'd)

	P U R P O S E O F E N T R Y												Total
	Returning resident	Prospective resident	Seeking employment	Employment	Visitor	Holiday	Business	In-transit	Diplomat	Student	Other	Not Stated	
Latvia	32	-	-	-	-	40	-	-	-	-	-	-	72
Estonia	-	-	-	10	-	31	10	-	-	-	-	-	51
Other Europe	150	-	-	32	20	200	40	50	-	-	10	10	512
Asia	20 150	807	94	2 437	4 155	11 215	1 475	331	370	40	3 599	1 918	46 591
India	12 302	384	35	572	1 691	1 017	372	70	80	10	1 492	672	18 697
China	2 790	160	10	621	1 080	1 182	581	30	120	10	1 084	730	8 398
Japan	111	30	11	631	170	6 172	201	60	90	-	71	70	7 617
Pakistan	1 332	80	1	20	311	112	60	-	-	-	286	135	2 337
Sri lanka	1 449	10	-	91	120	120	10	10	10	-	101	50	1 971
Korea	250	10	10	100	170	1 050	40	80	-	-	51	10	1 771
Bangladesh	864	43	10	50	190	32	1	10	-	-	220	140	1 560
Israel	240	30	-	162	71	606	80	30	10	-	50	31	1 310
Malaysia	60	-	-	60	30	190	20	-	20	10	30	10	430
Singapore	70	-	11	20	30	223	10	-	-	-	20	20	404
Philippines	110	20	3	30	41	45	-	10	-	-	23	-	282
Lebanon	180	20	-	-	10	10	10	-	-	-	-	10	240
Hong kong	40	10	-	10	40	61	30	-	-	-	20	-	211
Taiwan	40	-	-	-	30	100	10	-	-	-	10	-	190
Cyprus	70	-	-	20	11	10	30	20	-	-	20	-	181
Turkey	20	-	-	10	10	81	10	1	-	-	10	20	162
Thailand	31	-	1	-	50	14	-	-	-	10	30	-	136
Iran	41	-	2	10	20	40	-	-	-	-	1	-	114
Myanmar	50	-	-	-	10	-	-	-	20	-	20	-	100
Vietnam	-	-	-	10	-	50	-	10	10	-	-	-	80
Indonesia	20	-	-	-	-	20	-	-	10	-	20	-	70
Jordan	10	-	-	-	20	10	-	-	-	-	10	-	50
Other Asia	70	10	-	20	50	70	10	-	-	-	30	20	280

Table 3: Total Arrivals by Nationality and purpose of entry - 2009 (cont'd)

	P U R P O S E O F E N T R Y												Total
	Returning resident	Prospective resident	Seeking employment	Employment	Visitor	Holiday	Business	In-transit	Diplomat	Student	Other	Not Stated	
Oceania	1 088	195	61	2 225	713	8 722	495	680	72	40	437	194	14 922
Australia	800	142	53	1 875	591	7 172	343	551	52	10	285	148	12 022
New zealand	278	53	8	350	112	1 540	142	129	10	30	152	46	2 850
Other Oceania	10	-	-	-	10	10	10	-	10	-	-	-	50
Not Stated	545	411	42	365	2 478	830	845	1 187	41	50	1 061	621	8 476
Total Arrivals	238 889	84 709	8 843	74 591	724 603	319 111	147 393	403 386	6 384	3 876	240 315	84 188	2 336 288
	10.23	3.63	0.38	3.19	31.02	13.66	6.31	17.27	0.27	0.17	10.29	3.60	100.00

Table 4: Total Arrivals by Country of Residence and Purpose of Entry - 2009

	P U R P O S E O F E N T R Y												Total
	Returning	Prospective	Seeking	Employment	Visitor	Holiday	Business	In-transit	Diplomat	Student	Other	Not Stated	
	resident	resident	employment										
Africa	234 003	79 321	7 690	45 751	699 889	205 821	139 406	386 557	5 607	3 111	228 135	76 601	2 111 892
Zimbabwe	13 540	37 409	2 077	10 807	452 435	60 228	44 962	68 565	1 312	670	120 734	26 608	839 347
Republic of South Af	12 687	24 790	4 212	18 659	179 063	113 450	75 292	175 351	1 768	770	48 871	31 518	686 431
Botswana	203 200	3 124	274	12 961	15 882	2 355	1 700	1 143	1 234	760	18 763	9 697	271 093
Zambia	2 588	6 611	451	1 295	31 405	19 327	11 280	54 375	460	310	26 051	4 236	158 389
Namibia	679	5 409	525	905	11 939	4 712	3 025	81 184	302	131	10 646	3 061	122 518
Lesotho	280	321	40	200	2 057	932	571	393	50	30	371	231	5 476
Malawi	250	420	20	70	1 854	650	313	1 050	20	90	471	190	5 398
Swaziland	110	271	10	240	1 027	890	811	1 362	10	90	282	251	5 354
Mozambique	91	260	-	100	1 282	691	322	751	100	30	511	120	4 258
Tanzania	76	203	30	60	625	482	233	1 061	30	30	220	173	3 223
Kenya	126	170	30	211	814	632	233	400	30	20	291	92	3 049
Democratic Republic	60	80	1	91	152	204	54	580	20	40	181	90	1 553
Uganda	40	150	-	31	490	200	92	101	10	40	70	102	1 326
Angola	10	10	10	20	80	203	41	181	41	-	120	31	747
Mauritius	61	10	10	40	202	160	86	-	20	-	91	41	721
Nigeria	94	51	-	-	151	90	40	10	40	30	121	20	647
Ghana	40	11	-	10	50	70	62	-	10	20	60	20	353
Ethiopia	-	-	-	-	80	111	30	-	20	-	30	-	271
Egypt	20	-	-	-	70	60	50	-	10	-	21	30	261
Madagascar	-	-	-	10	-	40	-	30	30	-	50	-	160
Cameroon	-	10	-	-	60	10	2	-	-	10	40	10	142
Rwanda	-	10	-	-	10	31	30	-	-	-	30	10	121
Senegal	-	-	-	21	1	40	31	-	-	-	-	20	113
Tunisia	-	-	-	-	10	40	30	-	10	10	-	-	100
Sychelles	-	1	-	-	-	31	-	10	20	-	20	10	92
Libya	-	-	-	-	40	20	20	-	-	-	10	-	90
Sudan	11	-	-	-	-	-	30	-	-	-	-	10	51
Morocco	-	-	-	-	10	20	10	-	-	-	-	10	50

Table 4: Total Arrivals by Country of Residence and Purpose of Entry - 2009 (cont'd)

	P U R P O S E O F E N T R Y												Total
	Returning	Prospective	Seeking	Employment	Visitor	Holiday	Business	In-transit	Diplomat	Student	Other	Not Stated	
	resident	resident	employment										
Benin	-	-	-	-	10	-	10	-	-	-	30	-	50
Sierra leone	-	-	-	-	-	10	20	-	10	10	-	-	50
Reunion	10	-	-	-	10	10	-	10	-	-	-	-	40
Somalia	20	-	-	-	10	-	-	-	-	-	-	10	40
Other Africa	10	-	-	20	70	122	26	-	50	20	50	10	378
America	413	824	272	7 070	2 336	25 658	1 295	1 566	262	282	1 118	567	41 663
USA	283	724	233	5 891	1 859	21 491	1 054	1 267	191	212	869	465	34 539
Canada	100	60	35	1 020	336	3 410	185	249	51	60	187	61	5 754
Brazil	-	20	-	32	41	240	23	20	10	-	10	-	396
Argentina	10	-	-	41	40	111	1	10	-	-	10	20	243
Mexico	-	-	4	22	-	130	-	10	-	-	-	-	166
Cuba	-	-	-	1	20	20	10	10	10	-	10	-	81
Jamaica	-	10	-	10	-	30	10	-	-	-	10	10	80
Chile	-	-	-	20	-	22	2	-	-	10	-	10	64
Trinidad	10	-	-	10	10	10	10	-	-	-	11	-	61
Colombia	-	-	-	10	-	30	-	-	-	-	-	-	40
Peru	-	-	-	-	10	30	-	-	-	-	-	-	40
Bermuda	-	-	-	-	10	11	-	-	-	-	-	-	21
Belize	-	-	-	-	10	11	-	-	-	-	-	-	21
Guatemala	-	10	-	-	-	10	-	-	-	-	1	-	21
Venezuela	-	-	-	1	-	20	-	-	-	-	-	-	21
Dominican republic	-	-	-	10	-	10	-	-	-	-	-	-	20
Paraguay	10	-	-	-	-	10	-	-	-	-	-	-	20
Uruguay	-	-	-	-	-	20	-	-	-	-	-	-	20
Costa rica	-	-	-	-	-	11	-	-	-	-	-	1	12
Bahamas	-	-	-	-	-	10	-	-	-	-	-	-	10
Barbados	-	-	-	-	-	10	-	-	-	-	-	-	10
Ecuador	-	-	-	-	-	10	-	-	-	-	-	-	10

Table 4: Total Arrivals by Country of Residence and Purpose of Entry - 2009 (cont'd)

	P U R P O S E O F E N T R Y												Total
	Returning resident	Prospective resident	Seeking employment	Employment	Visitor	Holiday	Business	In-transit	Diplomat	Student	Other	Not Stated	
Panama	-	-	-	2	-	-	-	-	-	-	-	-	2
Suriname	-	-	-	-	-	1	-	-	-	-	-	-	1
Other America	10	10	-	13	20	134	-	-	-	-	11	1	199
Europe	1 315	1 292	557	16 372	6 350	64 742	3 400	8 150	181	292	2 408	2 167	107 226
United Kingdom	745	494	125	2 641	2 982	17 184	1 526	1 543	32	61	546	454	28 333
Germany	155	311	204	4 199	776	13 099	272	2 832	42	60	520	434	22 904
Netherlands	91	61	22	2 464	527	7 446	203	699	10	-	304	329	12 156
France	41	60	21	1 473	438	5 223	390	382	41	10	197	203	8 479
Italy	41	51	23	817	127	3 816	62	368	-	-	64	117	5 486
Spain	-	10	1	715	141	3 545	72	285	1	-	81	42	4 893
Switzerland	22	73	45	865	144	2 861	95	457	3	10	85	98	4 758
Belgiumluxenburg	40	21	10	563	162	1 995	94	222	20	10	56	71	3 264
Denmark	1	10	1	372	80	1 284	60	290	-	-	72	41	2 211
Austria	22	-	41	473	92	1 233	13	210	-	-	42	32	2 158
Sweden	11	30	10	392	131	1 032	121	181	-	50	102	51	2 111
Norway	20	40	13	232	91	1 136	70	30	-	51	80	20	1 783
Ireland	46	30	10	171	111	1 130	111	80	11	10	50	11	1 771
Russia	10	20	10	285	160	840	70	130	21	-	65	68	1 679
Portugal	10	20	-	121	124	566	110	161	-	-	43	80	1 235
Poland	20	10	-	150	90	399	-	70	-	-	30	12	781
Finland	-	30	20	91	2	425	11	40	-	30	10	-	659
Czechoslovakia	10	1	-	133	11	295	-	50	-	-	10	41	551
Hungary	-	-	-	21	50	191	10	50	-	-	10	21	353
Romania	-	-	1	40	-	182	-	20	-	-	10	11	264
Greece	-	10	-	32	20	126	10	20	-	-	11	-	229
Slovakia	-	-	-	10	20	100	-	10	-	-	20	10	170
Ukraine	10	-	-	20	-	112	10	10	-	-	-	1	163
Luxembourg	-	-	-	30	10	80	20	-	-	-	-	10	150

Table 4: Total Arrivals by Country of Residence and Purpose of Entry - 2009 (cont'd)

	P U R P O S E O F E N T R Y												Total
	Returning	Prospective	Seeking		Visitor	Holiday	Business	In-transit	Diplomat	Student	Other	Not Stated	
	resident	resident	employment	Employment									
Croatia	-	-	-	-	10	90	10	-	-	-	-	-	110
Bulgaria	10	10	-	10	21	40	-	-	-	-	-	-	91
Latvia	-	-	-	-	-	50	-	-	-	-	-	-	50
Lithuania	-	-	-	10	-	20	10	-	-	-	-	-	40
Yugoslavia	10	-	-	10	-	20	-	-	-	-	-	-	40
Other Europe	-	-	-	32	30	222	50	10	-	-	-	10	354
Asia	1 591	566	76	1 767	2 756	10 262	1 163	242	170	30	1 289	796	20 708
Japan	-	30	11	593	160	5 870	91	60	20	-	71	80	6 986
India	1 097	252	30	254	919	698	252	30	50	20	453	238	4 293
China	271	140	10	404	850	966	530	20	80	-	375	331	3 977
Korea	10	10	-	70	80	900	30	40	-	-	20	-	1 160
Israel	10	20	-	121	52	536	80	30	-	-	50	2	901
Pakistan	71	40	-	20	202	33	30	-	-	-	45	35	476
Malaysia	20	-	-	60	40	200	20	-	10	-	60	10	420
Singapore	-	10	11	13	41	286	10	-	-	-	20	10	401
Sri lanka	51	-	-	60	60	90	-	10	-	-	30	10	311
Bangladesh	31	3	-	30	70	2	-	10	-	-	110	50	306
Hong kong	10	10	10	31	40	138	20	10	-	-	10	-	279
Turkey	-	-	-	20	-	103	10	12	-	-	10	20	175
Philipines	10	20	3	20	51	17	-	-	-	-	4	-	125
Taiwan	-	-	-	-	20	80	10	-	-	-	-	-	110
Thailand	-	-	1	-	50	14	-	10	-	10	10	-	95
Lebanon	-	20	-	-	10	30	10	-	-	-	-	10	80
Cyprus	10	-	-	20	11	-	20	10	-	-	-	-	71
Iran	-	-	-	-	20	50	-	-	-	-	1	-	71
Vietnam	-	-	-	10	-	32	10	-	-	-	-	-	52
Indonesia	-	1	-	-	20	10	-	-	10	-	-	-	41
Jordan	-	-	-	-	20	10	-	-	-	-	10	-	40

Table 4: Total Arrivals by Country of Residence and Purpose of Entry - 2009 (cont'd)

	P U R P O S E O F E N T R Y												Total
	Returning resident	Prospective resident	Seeking employment	Employment	Visitor	Holiday	Business	In-transit	Diplomat	Student	Other	Not Stated	
Saudi arabia	-	-	-	20	-	10	10	-	-	-	-	-	40
Other Asia	-	10	-	21	40	187	30	-	-	-	10	-	298
Oceania	102	245	45	2 199	716	8 232	410	593	51	30	306	158	13 087
Australia	72	192	42	1 866	583	7 005	340	506	41	10	246	116	11 019
New zealand	30	53	3	333	133	1 227	60	87	10	20	60	42	2 058
Fiji	-	-	-	-	-	-	10	-	-	-	-	-	10
Not Stated	1 465	2 461	203	1 432	12 556	4 396	1 719	6 278	113	131	7 059	3 899	41 712
Tota Arrivals	238 889	84 709	8 843	74 591	724 603	319 111	147 393	403 386	6 384	3 876	240 315	84 188	2 336 288

Table 5: Total Arrivals by Purpose of Entry and Age-group - 2009

	AGE GROUP													Not	Total	
	0-4	5-9	10-14	15-19	20-24	25-29	30-34	35-39	40-44	45-49	50-54	55-59	60-64	65+		Stated
Purpose of entry																
Visitor	1 502	963	2 068	13 658	75 369	152 527	135 937	113 262	76 975	49 993	38 769	25 790	16 250	19 228	2 312	724 603
Intransit	574	382	971	10 326	33 747	56 412	63 985	65 514	55 473	41 383	30 475	20 082	10 970	11 749	1 343	403 386
Holiday	389	248	754	8 294	23 817	40 177	42 332	39 131	33 969	31 439	27 776	24 186	20 541	25 383	675	319 111
Other	405	340	601	4 839	24 391	46 313	44 063	37 874	26 300	19 008	14 570	9 297	5 803	5 882	629	240 315
Return resident	157	248	1 045	5 741	9 613	23 702	37 640	43 645	37 814	27 728	21 793	14 586	8 381	6 230	566	238 889
Business	148	80	173	1 183	8 567	22 363	25 327	25 692	20 056	14 796	12 851	8 279	4 686	2 888	304	147 393
Prosp. resident	255	274	379	2 025	9 276	15 994	14 629	12 284	9 127	6 761	5 048	3 650	2 206	2 556	245	84 709
Employment	64	75	274	2 026	4 806	8 395	9 840	8 797	8 421	7 432	7 408	5 971	4 757	6 095	230	74 591
Seek employment	31	21	41	288	741	1 212	1 099	1 251	1 029	761	704	647	445	543	30	8 843
Diplomat	31	10	20	72	469	783	825	798	937	771	722	508	136	242	60	6 384
Student	-	10	40	562	1 216	602	391	234	375	204	81	80	60	11	10	3 876
Not Stated	195	137	287	1 497	6 249	12 556	13 364	13 165	10 434	8 038	7 000	4 680	2 956	3 222	408	84 188
Total	3 751	2 788	6 653	50 511	198 261	381 036	389 432	361 647	280 910	208 314	167 197	117 756	77 191	84 029	6 812	2 336 288
	0.16	0.12	0.28	2.16	8.49	16.31	16.67	15.48	12.02	8.92	7.16	5.04	3.30	3.60	0.29	100.00

Table 6: Total Arrivals by Country of Residence and Age-Group- 2009

	AGEGROUP														Not Stated	Total
	0-4	5-9	10-14	15-19	20-24	25-29	30-34	35-39	40-44	45-49	50-54	55-59	60-64	65+		
Africa	3 447	2 530	5 692	43 768	180 542	356 331	364 403	341 005	261 105	188 122	146 517	98 641	57 324	56 174	6 291	2 111 892
Zimbabwe	1 140	821	1 365	13 696	93 993	202 114	177 764	142 226	84 659	46 638	32 939	19 543	10 045	9 892	2 512	839 347
South Africa	1 736	1 202	2 358	16 495	44 143	70 841	85 125	97 039	94 803	82 061	70 161	51 682	32 436	34 124	2 225	686 431
Botswana	229	243	1 096	6 028	10 179	26 591	43 833	51 215	44 223	30 684	24 772	16 042	8 812	6 547	599	271 093
Zambia	150	80	240	2 233	15 963	33 680	34 974	28 376	17 110	11 871	6 380	3 434	1 984	1 503	411	158 389
Namibia	172	144	493	4 595	13 796	18 011	16 436	17 079	16 046	13 132	9 412	6 030	3 175	3 613	384	122 518
Lesotho	-	10	40	201	500	791	965	742	701	554	420	301	120	121	10	5 476
Malawi	-	10	10	70	490	673	1 100	800	690	731	362	271	111	70	10	5 398
Swaziland	-	-	10	100	351	924	773	1 001	780	530	383	211	170	61	60	5 354
Mozambique	10	-	10	70	330	931	742	602	431	482	242	187	100	81	40	4 258
Tanzania	-	-	40	130	210	493	731	417	330	270	331	208	53	10	-	3 223
Kenya	-	20	-	60	224	370	545	522	491	359	222	152	23	41	20	3 049
DRC	-	-	10	-	40	211	332	261	182	201	144	61	71	30	10	1 553
Uganda	-	-	-	10	140	330	331	152	91	90	70	50	41	11	10	1 326
Angola	-	-	-	20	30	90	130	73	100	81	81	121	11	10	-	747
Mauritius	-	-	10	30	32	30	140	90	85	82	140	61	11	10	-	721
Nigeria	-	-	-	-	20	31	90	100	121	81	82	72	50	-	-	647
Ghana	-	-	-	10	-	20	60	10	50	61	61	50	31	-	-	353
Ethiopia	-	-	-	-	40	20	30	50	30	31	40	30	-	-	-	271
Egypt	-	-	-	-	20	70	70	40	1	20	10	10	10	10	-	261
Madagascar	-	-	-	20	-	40	20	-	-	10	40	10	20	-	-	160
Cameroon	-	-	-	-	10	-	20	20	10	21	30	11	10	10	-	142
Rwanda	-	-	-	-	-	30	40	-	10	21	-	10	10	-	-	121
Senegal	10	-	-	-	-	10	20	30	-	1	32	-	10	-	-	113
Tunisia	-	-	-	-	10	10	10	20	10	-	40	-	-	-	-	100
Sychelles	-	-	-	-	1	-	30	20	10	20	11	-	-	-	-	92
Libya	-	-	10	-	-	-	30	40	-	-	-	10	-	-	-	90
Sudan	-	-	-	-	-	-	10	10	21	-	10	-	-	-	-	51
Morocco	-	-	-	-	-	10	10	-	10	-	10	10	-	-	-	50
Benin	-	-	-	-	-	-	-	-	10	-	10	30	-	-	-	50

Table 6: Total Arrivals by Country of Residence and Age-Group- 2009 (cont'd)

	AGEGROUP														Not Stated	Total
	0-4	5-9	10-14	15-19	20-24	25-29	30-34	35-39	40-44	45-49	50-54	55-59	60-64	65+		
Sierra leone	-	-	-	-	-	-	-	10	20	-	10	10	-	-	-	50
Other Africa	-	-	-	-	20	10	42	60	80	90	72	34	20	30	-	458
America	95	39	160	1 658	3 473	3 492	3 142	2 451	2 431	2 794	3 413	4 326	5 200	8 910	79	41 663
USA	93	39	148	1 350	2 711	2 681	2 388	1 900	2 044	2 285	2 794	3 605	4 447	7 995	59	34 539
Canada	2	-	12	254	597	678	532	355	303	443	473	596	678	811	20	5 754
Brazil	-	-	-	21	30	41	61	82	10	20	44	23	33	31	-	396
Argentina	-	-	-	10	30	30	60	72	-	-	-	30	10	1	-	243
Mexico	-	-	-	3	42	20	21	1	13	3	31	1	10	21	-	166
Cuba	-	-	-	-	-	-	30	20	-	11	-	10	-	10	-	81
Jamaica	-	-	-	-	-	-	20	10	10	20	-	20	-	-	-	80
Chile	-	-	-	-	11	21	-	-	-	2	20	10	-	-	-	64
Trinidad	-	-	-	-	10	10	-	1	10	-	20	10	-	-	-	61
Colombia	-	-	-	-	30	-	-	-	-	-	10	-	-	-	-	40
Peru	-	-	-	-	10	-	-	-	10	-	-	-	10	10	-	40
Other America	-	-	-	20	2	11	30	10	31	10	21	21	12	31	-	199
Europe	80	54	491	3 451	7 983	9 783	11 422	9 030	9 822	10 630	11 642	10 137	9 846	12 715	140	107 226
UK	20	10	62	1 403	2 768	2 910	3 075	2 121	2 336	2 326	2 651	2 303	2 999	3 328	21	28 333
Germany	10	10	85	374	1 279	1 448	1 904	1 648	2 303	2 600	2 726	2 461	2 007	4 028	21	22 904
Netherlands	20	10	111	345	1 045	1 545	1 193	827	791	1 088	1 195	1 460	1 180	1 295	51	12 156
France	-	1	44	320	530	586	709	755	943	1 016	839	846	999	881	10	8 479
Italy	10	2	12	146	78	468	895	778	653	632	628	426	302	444	12	5 486
Spain	10	10	20	63	153	402	963	721	602	516	519	388	272	234	20	4 893
Switzerland	-	-	13	168	337	450	424	448	437	369	534	485	445	648	-	4 758
Belgium	-	-	10	135	234	255	311	243	340	420	463	326	248	277	2	3 264
Denmark	-	-	30	60	234	191	200	131	101	173	273	210	263	345	-	2 211
Austria	-	-	31	40	80	192	207	145	159	217	332	247	210	298	-	2 158
Sweden	-	1	31	81	319	222	145	174	136	154	212	152	236	247	1	2 111
Norway	-	-	10	30	402	222	210	110	121	126	121	151	120	160	-	1 783

Table 6: Total Arrivals by Country of Residence and Age-Group- 2009 (cont'd)

	AGEGROUP													Not Stated	Total	
	0-4	5-9	10-14	15-19	20-24	25-29	30-34	35-39	40-44	45-49	50-54	55-59	60-64			65+
Ireland	-	-	-	161	160	366	177	114	184	172	150	54	121	112	-	1 771
Russia	-	-	1	11	81	122	309	210	158	336	245	73	21	111	1	1 679
Portugal	-	10	-	23	81	61	154	105	103	167	275	142	60	54	-	1 235
Poland	-	-	-	20	12	50	121	92	110	32	103	141	50	50	-	781
Finland	-	-	1	20	90	41	110	21	31	22	82	100	121	20	-	659
Czechoslov	10	-	10	-	10	60	73	52	71	71	52	20	91	31	-	551
Hungary	-	-	-	-	10	40	61	61	40	60	20	20	10	31	-	353
Romania	-	-	-	-	-	-	51	52	51	20	40	30	20	-	-	264
Greece	-	-	-	1	10	10	10	21	51	2	31	31	30	31	1	229
Slovakia	-	-	20	10	20	10	10	20	10	-	20	10	20	20	-	170
Ukraine	-	-	-	-	-	-	10	70	11	61	1	-	-	10	-	163
Luxembourg	-	-	-	40	-	20	10	20	-	10	30	10	-	10	-	150
Croatia	-	-	-	-	10	60	10	-	-	10	10	10	-	-	-	110
Bulgaria	-	-	-	-	10	10	10	20	30	-	10	-	1	-	-	91
Latvia	-	-	-	-	-	-	-	-	10	20	-	10	-	10	-	50
Lithuania	-	-	-	-	-	-	-	-	10	-	20	-	-	10	-	40
Yugoslavia	-	-	-	-	-	-	-	10	10	-	10	-	10	-	-	40
Other Europe	-	-	-	-	30	42	70	61	20	10	50	31	10	30	-	354
Asia	20	20	60	420	1 346	2 596	2 451	2 147	1 883	1 796	1 382	1 597	1 912	3 018	60	20 708
Japan	20	-	10	91	301	561	561	421	382	283	292	633	1 050	2 371	10	6 986
India	-	10	10	111	248	686	703	511	368	502	306	363	242	213	20	4 293
China	-	10	20	83	481	710	522	634	575	421	200	150	111	50	10	3 977
Korea	-	-	10	20	30	110	130	80	70	130	190	130	200	60	-	1 160
Israel	-	-	10	21	72	131	40	121	71	100	73	80	92	80	10	901
Pakistan	-	-	-	-	92	52	85	52	90	20	1	34	30	20	-	476
Malaysia	-	-	-	-	20	80	40	-	30	80	30	80	40	20	-	420
Singapore	-	-	-	43	20	-	32	50	91	72	53	10	10	20	-	401
Sri lanka	-	-	-	-	20	20	50	30	40	20	51	10	20	50	-	311
Bangladesh	-	-	-	1	1	101	100	40	10	30	10	1	1	11	-	306

Table 6: Total Arrivals by Country of Residence and Age-Group- 2009 (cont'd)

	AGEGROUP													Not		Total
	0-4	5-9	10-14	15-19	20-24	25-29	30-34	35-39	40-44	45-49	50-54	55-59	60-64	65+	Stated	
Hong kong	-	-	-	-	10	21	13	21	30	34	60	30	30	30	-	279
Turkey	-	-	-	-	10	20	31	42	20	21	10	10	10	1	-	175
Philippines	-	-	-	10	11	11	24	3	20	-	22	2	2	10	10	125
Taiwan	-	-	-	10	-	10	20	10	-	20	10	10	10	10	-	110
Thailand	-	-	-	10	-	11	20	20	3	13	2	2	13	1	-	95
Lebanon	-	-	-	-	10	30	10	20	10	-	-	-	-	-	-	80
Cyprus	-	-	-	-	-	-	-	-	10	10	1	10	10	30	-	71
Iran	-	-	-	10	10	10	-	10	1	10	-	-	-	20	-	71
Vietnam	-	-	-	10	-	-	-	1	11	20	-	10	-	-	-	52
Indonesia	-	-	-	-	-	-	10	21	-	-	-	10	-	-	-	41
Jordan	-	-	-	-	10	10	-	-	10	-	10	-	-	-	-	40
Saudi arabia	-	-	-	-	-	10	-	-	10	-	10	-	10	-	-	40
Kazakhstan	-	-	-	-	-	-	-	-	-	-	-	10	10	-	-	20
Other Asia	-	-	-	-	-	12	60	60	31	10	51	22	31	21	-	298
Oceania	12	10	41	425	1 128	2 189	1 461	926	841	942	1 146	1 119	1 355	1 471	21	13 087
Australia	12	-	41	403	895	1 809	1 232	795	715	786	852	1 020	1 172	1 266	21	11 019
New zealand	-	10	-	22	233	380	229	131	126	146	294	99	183	205	-	2 058
Fiji	-	-	-	-	-	-	-	-	-	10	-	-	-	-	-	10
Not Stated	97	135	209	789	3 789	6 645	6 553	6 088	4 828	4 030	3 097	1 936	1 554	1 741	221	41 712
TotalArrivals	3 751	2 788	6 653	50 511	198 261	381 036	389 432	361 647	280 910	208 314	167 197	117 756	77 191	84 029	6 812	2 336 288

Table7: Total Arrivals by Nationality and Age-Group- 2009

	AGEGROUP														Not Stated	Total
	0-4	5-9	10-14	15-19	20-24	25-29	30-34	35-39	40-44	45-49	50-54	55-59	60-64	65+		
Africa	3 415	2 613	5 595	42 784	180 162	356 092	362 287	338 044	256 957	183 063	140 964	93 683	52 731	51 590	6 316	2 076 296
Zimbabwe	1 211	930	1 649	15 537	100 549	221 606	209 304	178 412	111 548	60 816	43 374	24 613	11 281	9 564	2 905	993 299
South Africa	1 821	1 409	2 921	18 292	45 141	73 912	88 627	101 714	101 458	88 384	75 307	56 014	34 760	36 369	2 334	728 463
Zambia	161	80	330	2 933	16 744	35 253	37 965	31 308	19 790	14 382	7 848	3 968	2 044	1 471	471	174 748
Namibia	172	143	504	4 662	13 685	17 548	15 838	16 500	15 382	12 671	9 173	5 822	2 982	3 397	386	118 865
Malawi	-	20	20	250	960	1 752	2 291	2 601	1 804	1 452	1 072	392	240	190	10	13 054
Lesotho	-	-	40	220	530	931	1 143	1 104	1 031	704	463	511	150	152	20	6 999
Kenya	-	10	20	230	473	592	1 194	1 387	1 171	756	502	262	91	51	50	6 789
Mozambique	20	-	20	90	521	1 233	1 243	922	741	791	363	275	140	81	40	6 480
Swaziland	-	10	10	70	410	1 013	963	1 090	911	530	386	211	180	71	50	5 905
Tanzania	-	1	40	150	400	653	1 042	840	520	391	691	395	154	40	-	5 317
Nigeria	-	10	10	110	60	193	542	530	541	432	412	201	110	30	10	3 191
Uganda	10	-	10	30	260	500	602	253	281	241	100	160	101	32	10	2 590
DRC	-	-	-	10	71	282	521	361	404	353	174	121	41	20	10	2 368
Mauritius	-	-	10	110	73	92	200	190	212	214	210	171	51	10	-	1 543
Ghana	-	-	-	-	30	92	140	80	122	181	151	160	164	12	10	1 142
Angola	-	-	-	30	80	70	130	72	150	120	90	60	31	10	10	853
Ethiopia	-	-	-	20	40	70	90	130	240	63	51	50	61	10	-	825
Egypt	10	-	1	10	50	100	111	80	91	30	31	10	40	10	-	574
Cameroon	-	-	-	-	-	30	10	70	40	21	50	31	10	10	-	272
Somalia	-	-	-	-	10	10	-	80	20	30	20	10	10	10	-	200
Sierra leone	-	-	-	10	10	-	10	20	70	30	20	10	10	-	-	190
Senegal	10	-	-	-	20	-	20	20	-	11	40	30	20	-	-	171
Sychelles	-	-	-	-	11	-	40	20	40	30	10	10	-	-	-	161
Libya	-	-	10	-	-	-	40	50	20	-	10	10	10	-	-	150
Madagascar	-	-	-	-	10	30	20	-	20	10	30	10	10	-	-	140
Sudan	-	-	-	-	4	20	-	-	10	30	31	22	10	-	-	127
Rwanda	-	-	-	-	-	30	30	-	10	10	-	-	10	-	-	90
Reunion	-	-	-	-	10	20	-	10	20	10	10	10	-	-	-	90
Guinea	-	-	-	-	-	10	-	10	10	30	10	-	-	-	-	70

Table 7: Total Arrivals by Nationality and Age-Group- 2009 (cont'd)

	AGEGROUP													Not Stated	Total	
	0-4	5-9	10-14	15-19	20-24	25-29	30-34	35-39	40-44	45-49	50-54	55-59	60-64			65+
Cote d ivoire	-	-	-	-	-	-	-	10	20	30	2	-	-	-	-	62
Benin	-	-	-	-	-	-	-	-	10	10	10	30	-	-	-	60
Algeria	-	-	-	-	-	-	20	-	-	30	-	-	-	-	-	50
Tunisia	-	-	-	10	-	10	10	-	-	10	10	-	-	-	-	50
Burkina faso	-	-	-	-	-	-	20	10	-	-	-	10	10	-	-	50
Togo	-	-	-	-	-	-	-	-	10	-	10	20	-	10	-	50
Gambia	-	-	-	-	-	-	1	-	20	10	1	3	-	10	-	45
Morocco	-	-	-	-	-	10	10	-	10	-	11	-	-	-	-	41
Comoro	-	-	-	-	-	-	10	20	10	-	-	-	-	-	-	40
Other Africa	-	-	-	10	10	30	100	150	220	250	291	81	10	30	-	1 182
America	103	39	160	1 903	4 068	4 079	3 784	3 115	3 095	3 509	4 317	4 793	5 648	9 338	80	48 031
USA	102	39	148	1 495	3 196	3 117	2 716	2 324	2 494	2 857	3 275	3 890	4 756	8 349	60	38 818
Canada	1	-	12	304	597	779	703	454	426	497	697	707	791	896	20	6 884
Brazil	-	-	-	21	40	51	81	122	20	60	95	24	20	30	-	564
Argentina	-	-	-	20	51	31	90	62	-	-	40	60	20	-	-	374
Jamaica	-	-	-	20	30	-	20	30	30	30	60	20	10	-	-	250
Mexico	-	-	-	13	51	40	41	11	23	3	30	1	21	11	-	245
Cuba	-	-	-	-	-	-	20	40	30	10	40	20	-	20	-	180
Trinidad	-	-	-	10	-	10	-	20	-	-	40	30	-	-	-	110
Belize	-	-	-	-	10	10	31	21	-	21	-	11	-	2	-	106
Colombia	-	-	-	-	30	10	21	20	-	10	10	-	-	-	-	101
Chile	-	-	-	-	11	20	-	-	-	1	10	10	10	-	-	62
Peru	-	-	-	-	10	-	-	1	30	-	-	-	10	10	-	61
Paraguay	-	-	-	-	-	-	30	-	-	-	10	-	-	-	-	40
Venezuela	-	-	-	10	-	-	-	-	10	-	-	10	10	-	-	40
Other America	-	-	-	10	42	11	31	10	32	20	10	10	-	20	-	196

Table 7: Total Arrivals by Nationality and Age-Group- 2009 (cont'd)

	AGEGROUP														Not Stated	Total
	0-4	5-9	10-14	15-19	20-24	25-29	30-34	35-39	40-44	45-49	50-54	55-59	60-64	65+		
Europe	120	75	633	4 197	9 040	11 528	13 509	11 769	13 315	14 960	16 584	14 504	14 110	17 418	210	141 972
UK	60	10	135	1 756	3 205	3 608	3 636	3 384	4 050	4 469	5 704	5 198	5 583	5 998	81	46 877
Germany	10	11	95	594	1 491	1 723	2 060	1 842	2 716	3 016	2 908	2 845	2 429	4 744	20	26 504
Netherlands	20	11	110	406	1 198	1 644	1 309	954	1 065	1 244	1 485	1 672	1 403	1 658	41	14 220
France	10	-	64	320	582	759	926	1 091	1 004	1 197	1 012	936	1 133	1 011	11	10 056
Italy	-	2	22	156	88	559	1 127	940	766	822	832	508	326	548	2	6 698
Spain	10	-	20	54	154	410	1 036	721	658	586	541	379	313	244	20	5 146
Switzerland	-	-	13	218	296	440	413	428	448	448	560	539	509	699	-	5 011
Belgiumlux	-	10	10	125	284	314	388	274	417	582	636	437	303	317	2	4 099
Ireland	-	-	-	182	250	417	196	187	275	454	285	188	302	259	-	2 995
Denmark	-	10	30	70	214	192	260	154	152	212	366	312	363	539	20	2 894
Austria	-	-	31	50	101	205	237	244	171	298	415	257	311	383	-	2 703
Sweden	-	1	31	91	329	234	215	205	191	184	262	163	267	307	1	2 481
Portugal	-	10	10	44	102	111	238	213	166	257	441	264	142	136	10	2 144
Norway	-	-	10	30	403	251	240	121	122	206	131	151	181	161	-	2 007
Russia	-	-	1	11	71	162	370	230	208	437	255	103	41	111	1	2 001
Poland	-	-	-	10	32	71	182	134	170	52	134	121	70	70	-	1 046
Finland	-	-	1	20	80	41	120	62	71	42	133	120	121	20	-	831
Yugoslavia	-	-	10	20	10	20	40	130	201	51	140	40	50	-	-	712
Czechoslovakia	10	-	20	-	10	60	93	62	71	101	53	20	111	31	-	642
Bulgaria	-	-	-	10	20	52	50	70	80	60	50	10	11	10	-	423
Greece	-	-	-	-	40	10	30	40	81	11	60	50	50	42	1	415
Hungary	-	-	-	-	10	40	81	61	40	60	20	20	11	30	-	373
Romania	-	10	-	-	-	31	51	52	71	20	30	30	20	-	-	315
Slovakia	-	-	20	10	20	10	31	40	20	20	30	10	40	10	-	261
Croatia	-	-	-	10	10	60	20	-	-	10	10	70	10	10	-	210
Ukraine	-	-	-	-	-	-	30	60	31	61	1	-	-	10	-	193
Luxembourg	-	-	-	-	-	20	-	10	-	10	20	10	-	10	-	80
Latvia	-	-	-	-	-	32	-	-	10	10	-	10	-	10	-	72
Estonia	-	-	-	-	-	-	20	10	-	-	10	1	-	10	-	51

Table 7: Total Arrivals by Nationality and Age-Group- 2009 (cont'd)

	AGEGROUP													Not Stated	Total	
	0-4	5-9	10-14	15-19	20-24	25-29	30-34	35-39	40-44	45-49	50-54	55-59	60-64			65+
Iceland	-	-	-	-	-	-	10	10	-	10	-	-	-	10	-	40
Lithuania	-	-	-	-	10	-	-	-	10	-	10	-	-	10	-	40
Other Europe	-	-	-	10	30	52	100	40	50	30	50	40	10	20	-	432
Asia	60	30	180	936	2 939	5 963	6 887	6 663	5 580	4 766	3 364	2 759	2 673	3 690	101	46 591
India	10	20	100	413	939	2 484	3 365	3 321	2 397	2 057	1 188	1 135	604	623	41	18 697
China	20	10	20	131	842	1 230	951	1 381	1 413	1 150	610	270	210	140	20	8 398
Japan	20	-	10	90	330	610	713	482	473	344	382	652	1 100	2 401	10	7 617
Pakistan	-	-	-	60	294	294	570	361	370	121	70	66	81	50	-	2 337
Sri lanka	10	-	10	40	210	200	330	201	243	240	244	60	91	92	-	1 971
Korea	-	-	30	60	60	150	200	100	150	260	281	140	250	90	-	1 771
Bangladesh	-	-	-	21	71	521	322	302	110	80	40	51	21	21	-	1 560
Israel	-	-	10	11	92	150	80	181	130	140	113	171	121	111	10	1 320
Malaysia	-	-	-	-	10	80	40	30	30	90	30	50	40	30	-	430
Singapore	-	-	-	30	10	10	32	70	60	71	101	10	10	-	-	404
Philippines	-	-	-	-	11	31	42	23	40	10	51	22	22	20	10	282
Lebanon	-	-	-	-	-	30	40	40	20	50	50	-	10	-	-	240
Hong kong	-	-	-	-	20	20	1	20	20	10	70	10	20	20	-	211
Taiwan	-	-	-	10	-	20	20	10	10	30	20	10	30	20	10	190
Cyprus	-	-	-	-	10	10	-	-	30	30	21	40	10	30	-	181
Turkey	-	-	-	-	10	20	21	30	20	-	40	10	10	1	-	162
Thailand	-	-	-	10	-	21	30	21	3	23	2	22	3	1	-	136
Iran	-	-	-	20	10	12	10	20	1	20	1	-	-	20	-	114
Myanmar	-	-	-	-	-	30	20	-	-	10	20	-	20	-	-	100
Vietnam	-	-	-	10	-	-	40	-	-	10	-	20	-	-	-	80
Indonesia	-	-	-	-	-	-	10	20	10	20	-	10	-	-	-	70
Jordan	-	-	-	-	10	10	-	-	20	-	10	-	-	-	-	50
Other Asia	-	-	-	30	10	30	50	50	30	-	20	10	20	20	-	270

Table 7: Total Arrivals by Nationality and Age-Group- 2009 (cont'd)

	AGEGROUP													Not Stated	Total	
	0-4	5-9	10-14	15-19	20-24	25-29	30-34	35-39	40-44	45-49	50-54	55-59	60-64			65+
Oceania	9	10	52	486	1 254	2 326	1 658	1 041	1 031	1 116	1 251	1 490	1 601	1 553	41	14 922
Australia	12	-	51	424	939	1 870	1 355	837	775	928	927	1 249	1 307	1 307	41	12 022
New zealand	-	10	1	62	315	456	303	204	246	178	324	231	284	236	-	2 850
Other Oceania	-	-	-	-	-	-	-	-	10	10	-	10	10	10	-	50
Not Stated	41	21	33	205	798	1 048	1 307	1 015	932	900	717	527	428	440	64	8 476
Total Arrivals	3 748	2 788	6 653	50 511	198 261	381 036	389 432	361 647	280 910	208 314	167 197	117 756	77 191	84 029	6 812	2 336 288

Table 8 : Total Arrivals by Nationality and Month - 2009

	January	February	March	April	May	June	July	August	September	October	November	December	Total
Africa	197 702	149 271	170 636	182 684	178 497	156 033	177 859	182 572	166 089	150 175	156 810	207 968	2 076 296
Zimbabwe	102 922	71 655	80 459	89 040	91 984	75 067	86 962	86 512	71 087	66 542	73 414	97 655	993 299
South Africa	60 612	50 561	59 985	63 442	55 756	56 101	63 519	65 407	64 972	55 505	56 298	76 305	728 463
Zambia	18 584	15 608	14 990	14 571	14 985	11 548	13 228	13 691	13 964	13 647	13 134	16 798	174 748
Namibia	9 243	7 260	10 124	10 219	10 536	8 834	8 816	11 432	10 353	9 497	9 850	12 701	118 865
Malawi	1 592	870	1 202	1 201	1 292	910	1 170	1 072	901	1 171	671	1 002	13 054
Lesotho	550	451	381	772	671	561	962	663	603	533	410	442	6 999
Kenya	951	491	601	580	425	442	382	589	581	561	555	631	6 789
Mozambique	811	550	561	570	885	420	621	409	291	460	430	472	6 480
Swaziland	540	340	510	564	491	381	461	712	601	450	380	475	5 905
Tanzania	521	362	441	491	320	445	292	449	794	442	414	346	5 317
Nigeria	270	210	300	341	351	230	240	260	292	252	282	163	3 191
Uganda	171	330	180	70	50	281	170	337	320	210	161	310	2 590
DRC	130	90	220	230	160	121	192	192	512	174	120	227	2 368
Mauritius	114	62	132	162	161	132	163	195	92	161	65	104	1 543
Ghana	100	71	70	80	70	110	161	103	112	90	83	92	1 142
Angola	70	70	70	60	70	20	120	103	70	80	40	80	853
Ethiopia	90	60	50	40	90	80	70	44	140	50	81	30	825
Egypt	90	50	30	40	40	70	40	31	73	50	40	20	574
Cameroon	20	20	40	20	10	10	10	52	40	10	20	20	272
Somalia	10	20	10	20	20	50	10	20	20	10	20	-	210
Sierra leone	40	10	10	10	10	-	10	10	20	20	40	10	190
Senegal	10	20	10	10	10	-	20	21	20	30	10	10	171
Sychelles	10	10	30	30	20	-	20	41	-	-	-	-	161
Libya	30	-	10	-	-	-	10	10	10	20	30	30	150
Madagascar	30	10	30	-	10	10	20	-	20	-	10	-	140
Sudan	31	-	30	-	10	-	10	-	-	30	11	5	127
Rwanda	10	-	20	10	-	10	10	10	-	-	20	-	90
Reunion	-	-	-	10	10	-	30	10	10	-	20	-	90
Guinea	20	-	-	-	-	-	10	-	10	-	30	-	70
Cote d ivoire	10	-	10	-	10	20	-	12	-	-	-	-	62
Benin	-	-	10	-	-	-	-	-	40	10	-	-	60
Algeria	-	-	20	-	-	-	10	-	10	-	10	-	50
Tunisia	-	-	-	-	-	10	-	10	10	-	10	10	50
Burkina faso	-	-	-	-	-	-	-	20	20	-	10	-	50
Togo	-	-	-	-	20	-	10	-	10	-	10	-	50
Gambia	-	-	-	-	-	-	-	5	20	10	10	-	45
Morocco	-	-	10	11	-	-	-	-	-	10	10	-	41
Comoro	10	10	-	-	-	10	10	-	-	-	-	-	40
Other Africa	110	80	90	90	30	170	100	150	71	150	111	30	1 182
America	2 444	2 384	3 540	3 782	4 818	4 888	5 603	5 550	4 724	4 060	3 313	2 925	48 031
USA	1 775	1 837	2 793	2 946	4 072	4 289	4 646	4 543	3 920	3 099	2 529	2 369	38 818
Canada	495	477	606	538	525	444	765	702	608	727	620	377	6 884
Brazil	63	10	40	30	51	21	62	90	34	81	32	50	564
Argentina	30	10	10	71	10	51	10	50	61	21	30	20	374
Jamaica	10	10	40	-	20	40	30	30	30	10	30	-	250
Mexico	20	-	21	2	20	11	30	30	41	41	10	19	245
Cuba	-	20	-	30	50	10	10	30	-	10	-	20	180
Trinidad	10	10	-	-	-	-	20	10	20	30	10	-	110
Belize	-	-	-	65	-	-	-	-	-	1	-	40	106
Colombia	10	-	10	-	-	20	-	41	-	-	-	20	101
Chile	31	-	10	10	-	1	-	-	-	-	10	-	62
Peru	-	-	-	20	20	-	10	1	-	-	10	-	61
Paraguay	-	-	-	-	10	-	-	10	10	-	10	-	40
Venezuela	-	-	-	10	-	-	-	10	-	20	-	-	40
Other America	-	10	10	60	40	1	20	3	-	20	22	10	196
Europe	8 583	9 280	9 621	10 669	9 851	9 128	13 653	19 368	14 924	15 320	12 658	8 917	141 972
UK	3 526	3 516	3 937	3 687	3 568	3 556	4 308	5 298	4 488	4 104	3 774	3 115	46 877
Germany	1 234	1 259	1 572	1 951	1 993	1 548	2 266	3 135	3 620	3 796	2 637	1 493	26 504
Netherlands	632	889	591	918	810	711	1 816	1 873	1 799	2 068	1 365	748	14 220
France	497	656	765	796	726	509	954	1 911	811	1 039	850	542	10 056
Italy	342	213	354	378	474	435	696	2 211	608	505	289	193	6 698
Spain	126	80	210	319	281	353	656	1 591	571	396	297	266	5 146
Switzerland	230	225	279	308	335	342	504	405	769	633	635	346	5 011
Belgiumlux	158	250	222	284	205	223	674	572	455	395	396	265	4 099
Ireland	184	268	263	255	243	352	336	250	198	275	106	265	2 995
Denmark	292	400	201	224	122	124	206	151	188	242	571	173	2 894
Austria	153	114	265	184	236	83	211	446	248	347	275	141	2 703
Sweden	200	210	157	202	132	154	103	156	230	151	282	504	2 481
Portugal	132	200	180	172	109	104	242	331	177	193	144	160	2 144
Norway	130	370	150	195	51	91	160	141	130	272	212	105	2 007

Table 8 : Total Arrivals by Nationality and Month - 2009 (cont'd)

	January	February	March	April	May	June	July	August	September	October	November	December	Total
Russia	276	140	143	351	212	133	52	193	160	104	148	89	2 001
Poland	80	90	31	80	50	22	112	150	110	130	120	71	1 046
Finland	60	110	60	2	70	82	32	71	70	83	120	71	831
Yugoslavia	60	60	80	80	90	90	50	60	20	62	20	40	712
Czechoslov	21	60	30	20	20	33	23	60	70	160	105	40	642
Bulgaria	20	60	40	-	20	22	30	70	21	20	80	40	423
Greece	70	-	1	13	21	50	30	80	30	10	40	70	415
Hungary	40	10	30	130	10	20	-	41	21	21	50	-	373
Romania	20	30	-	30	-	30	-	31	10	144	-	20	315
Slovakia	20	20	-	10	20	30	40	10	20	30	21	40	261
Croatia	20	10	10	40	-	10	40	-	-	60	-	20	210
Ukraine	30	20	10	10	42	-	10	10	-	30	31	-	193
Luxembourg	-	-	-	-	10	-	-	50	10	-	10	-	80
Latvia	-	10	20	-	1	1	10	10	-	10	-	10	72
Estonia	20	-	-	10	-	-	10	1	-	-	-	10	51
Iceland	-	-	10	-	-	10	-	10	10	-	-	-	40
Lithuania	-	-	10	10	-	-	-	-	-	-	20	-	40
Other Europe	10	10	-	10	-	10	82	50	80	40	60	80	432
Asia	4 234	2 931	3 736	3 671	4 322	3 519	4 125	4 060	3 823	5 165	3 176	3 829	46 591
India	2 158	1 091	1 434	1 789	2 237	1 328	1 629	1 263	1 290	1 758	1 073	1 647	18 697
China	610	830	810	750	600	550	731	631	700	680	802	704	8 398
Japan	160	220	520	340	590	620	800	959	982	1 602	421	403	7 617
Pakistan	255	230	231	201	191	240	91	123	131	239	173	232	2 337
Sri lanka	360	80	110	160	190	140	111	91	192	234	163	140	1 971
Korea	150	90	110	50	40	130	310	290	91	110	130	270	1 771
Bangladesh	220	120	141	160	120	110	70	171	93	80	142	133	1 560
Israel	110	120	100	64	70	141	90	151	202	120	91	61	1 320
Malaysia	40	30	80	10	50	40	40	30	40	20	20	30	430
Singapore	10	20	30	12	80	60	30	20	-	60	20	62	404
Philippines	31	10	-	30	24	10	30	30	40	10	20	47	282
Lebanon	60	30	20	10	10	20	20	30	20	-	20	-	240
Hong kong	-	-	10	10	20	20	51	30	10	10	30	20	211
Taiwan	10	-	10	20	20	20	10	70	10	10	-	10	190
Cyprus	10	10	20	-	20	20	-	60	-	20	11	10	181
Turkey	-	10	10	-	10	40	11	31	10	20	10	10	162
Thailand	10	10	40	15	10	-	-	20	11	-	20	-	136
Iran	-	-	10	-	10	-	21	20	1	32	10	10	114
Myanmar	30	-	20	10	10	-	10	-	-	10	10	-	100
Vietnam	-	-	10	10	20	10	-	-	-	30	-	-	80
Indonesia	-	-	10	10	-	-	20	-	-	10	-	20	70
Jordan	-	-	-	10	-	-	-	10	-	30	-	-	50
Other Asia	10	30	10	10	-	10	50	30	-	80	10	20	260
Oceania	1 063	755	1 056	1 126	1 245	1 275	1 734	1 610	1 528	1 383	1 108	1 039	14 922
Australia	848	640	796	992	1 015	968	1 464	1 199	1 204	1 161	898	837	12 022
New zealand	175	115	260	134	230	297	270	411	324	222	210	202	2 850
Other Oceania	40	-	-	-	-	10	-	-	-	-	-	-	30
Not Stated	637	332	468	225	482	404	404	619	305	490	3 398	712	8 476
Total Arrivals	214 663	164 953	189 057	202 157	199 215	175 247	203 378	213 779	191 393	176 593	180 463	225 390	2 336 288

Table 9: Total Arrivals by Country of Residence and Month - 2009

	January	February	March	April	May	June	July	August	September	October	November	December	Total
Africa	202 330	150 690	174 456	188 612	181 103	159 197	175 780	184 471	169 587	155 049	161 716	208 901	2 111 892
Zimbabwe	84 257	61 186	70 035	75 651	77 347	64 033	72 484	69 720	64 388	52 878	63 871	83 497	839 347
Republic of Sou	56 789	45 755	56 429	61 465	51 850	53 542	60 087	61 404	62 423	52 995	49 966	73 726	686 431
Botswana	32 805	19 948	21 197	24 804	24 571	20 014	18 494	25 484	15 505	24 443	23 190	20 638	271 093
Zambia	16 149	14 174	13 848	13 229	13 725	10 245	12 267	12 640	12 315	12 428	12 248	15 121	158 389
Namibia	9 747	7 444	10 264	10 547	10 795	8 997	8 951	11 979	10 954	9 835	9 562	13 443	122 518
Lesotho	350	341	312	641	460	431	932	522	502	373	330	282	5 476
Malawi	400	370	430	370	501	350	550	514	592	470	500	351	5 398
Swaziland	560	280	400	482	441	301	451	635	481	390	410	523	5 354
Mozambique	340	350	320	361	613	290	461	298	221	240	420	344	4 258
Tanzania	230	260	270	311	161	262	150	219	700	192	294	174	3 223
Kenya	330	180	300	210	188	241	142	302	341	250	313	252	3 049
Democratic Rep	50	90	140	140	90	70	120	72	461	93	50	177	1 553
Uganda	20	120	80	50	20	91	110	155	190	120	200	170	1 326
Angola	70	40	100	70	60	30	90	106	50	41	30	60	747
Mauritius	13	22	51	60	60	50	110	134	70	90	31	30	721
Nigeria	30	20	60	100	51	30	71	60	72	61	50	42	647
Ghana	20	-	10	10	40	20	80	23	80	30	40	-	353
Ethiopia	10	30	40	20	40	40	30	11	30	10	10	-	271
Egypt	-	20	20	11	20	30	40	30	40	20	20	10	261
Madagascar	40	10	20	-	10	20	30	10	-	-	10	10	160
Cameroon	20	10	10	10	-	-	-	22	20	10	20	20	142
Rwanda	20	-	10	10	-	20	20	11	-	-	30	-	121
Senegal	-	10	10	-	-	10	30	11	1	20	11	10	113
Tunisia	10	-	10	20	10	10	-	30	10	-	-	-	100
Sychelles	-	10	20	10	10	10	10	22	-	-	-	-	92
Libya	10	-	10	-	-	-	10	10	10	-	30	10	90
Sudan	30	-	-	-	-	-	10	-	1	10	-	-	51
Morocco	-	-	10	10	-	10	-	-	-	10	10	-	50
Benin	-	-	10	-	-	-	-	-	40	-	-	-	50
Sierra leone	10	10	-	-	-	-	-	-	10	-	20	-	50
Reunion	10	-	10	10	-	-	10	-	-	-	-	-	40
Somalia	-	-	-	10	10	-	10	-	-	-	10	-	40
Other Africa	10	10	30	-	30	50	30	47	80	40	40	11	378
America	1 991	1 972	3 094	3 006	4 251	4 373	5 282	4 878	4 271	3 334	2 772	2 439	41 663
United States A	1 511	1 535	2 465	2 493	3 662	3 961	4 427	4 207	3 601	2 586	2 130	1 961	34 539
Canada	374	427	528	397	457	326	693	585	505	595	528	339	5 754
Brazil	35	-	50	10	12	11	72	40	34	51	31	50	396
Argentina	10	10	-	41	10	41	10	20	51	20	10	20	243
Mexico	10	-	11	2	10	-	20	13	40	41	-	19	166
Cuba	-	-	-	-	50	10	-	-	-	11	10	-	81
Jamaica	10	-	20	-	10	10	10	-	-	-	20	-	80
Chile	31	-	10	10	-	2	-	-	10	-	1	-	64
Trinidad	-	-	-	1	-	-	20	-	20	10	10	-	61
Colombia	-	-	-	-	-	10	-	-	-	-	-	30	40
Peru	-	-	-	10	10	-	10	-	-	-	10	-	40
Other America	10	-	10	42	30	2	20	13	10	20	22	20	199
Europe	4 863	6 316	6 748	7 207	7 236	5 809	11 604	16 029	11 981	12 042	11 484	5 907	107 226
United Kingdom	1 447	1 904	2 286	1 932	2 102	1 886	3 396	3 468	3 041	2 548	2 758	1 565	28 333
Germany	880	1 057	1 330	1 537	1 789	1 158	1 971	2 830	3 121	3 341	2 740	1 150	22 904
Netherlands	489	647	499	705	650	416	1 678	1 729	1 555	1 802	1 436	550	12 156
France	361	494	637	659	541	408	786	1 763	785	886	792	367	8 479
Italy	202	142	224	253	354	326	622	2 010	462	432	299	160	5 486
Spain	98	30	180	266	258	342	656	1 566	561	383	317	236	4 893
Switzerland	190	176	239	286	320	282	518	394	741	643	646	323	4 758
Belgiumlux	78	210	158	183	166	143	627	447	336	346	377	193	3 264
Denmark	240	330	160	122	71	80	165	101	137	182	480	143	2 211
Austria	61	72	234	92	191	51	190	388	228	314	236	101	2 158
Sweden	160	190	147	171	111	140	70	144	169	131	269	409	2 111
Norway	90	360	140	174	51	70	150	90	130	212	182	134	1 783
Ireland	110	124	120	170	128	173	263	185	120	131	73	174	1 771
Russia	216	110	93	280	202	93	62	182	130	94	148	69	1 679
Portugal	31	140	100	82	70	52	111	219	114	90	165	61	1 235
Poland	30	50	10	50	20	30	82	120	89	90	150	60	781
Finland	40	100	50	2	60	52	32	50	40	52	120	61	659
Czechoslovakia	10	60	20	10	20	23	23	60	60	130	95	40	551
Hungary	40	10	30	130	10	20	-	22	20	11	60	-	353
Romania	20	30	-	40	-	10	-	10	20	134	-	-	264
Greece	30	-	11	3	10	13	30	80	21	-	10	21	229
Slovakia	-	20	-	-	20	10	30	10	30	30	10	10	170
Ukraine	20	10	20	10	32	-	10	10	10	20	21	-	163

Table 9 : Total Arrivals by Country of Residence and Month - 2009 (cont'd)

	January	February	March	April	May	June	July	August	September	October	November	December	Total
Luxembourg	-	10	-	-	10	-	10	100	10	-	10	-	150
Croatia	-	-	-	20	10	10	30	10	-	20	-	10	110
Bulgaria	-	30	-	-	10	-	20	10	1	-	10	10	91
Latvia	-	-	20	-	-	-	-	-	-	10	-	20	50
Lithuania	-	-	10	-	-	10	-	-	-	-	20	-	40
Yugoslavia	10	-	20	-	10	-	-	-	-	-	-	-	40
Other Europe	10	10	10	30	20	11	72	31	50	10	60	40	354
Asia	865	1 030	1 801	1 206	1 772	1 660	2 587	1 950	2 020	2 728	1 538	1 551	20 708
Japan	120	210	510	310	530	544	740	816	930	1 532	413	331	6 986
India	232	220	490	212	566	284	823	184	434	279	296	273	4 293
China	200	280	440	410	280	281	433	192	250	460	388	363	3 977
Korea	80	80	50	30	30	70	220	200	60	70	90	180	1 160
Israel	60	70	60	34	40	60	41	153	161	80	71	71	901
Pakistan	11	40	31	31	52	60	40	54	11	24	61	61	476
Malaysia	30	20	80	10	40	50	40	30	30	20	20	50	420
Singapore	10	30	20	21	80	70	41	14	-	53	10	52	401
Sri lanka	40	10	20	30	30	30	20	21	30	20	40	20	311
Bangladesh	-	30	30	20	40	20	-	50	42	-	52	22	306
Hong kong	40	-	20	11	20	31	34	52	11	10	30	20	279
Turkey	-	10	10	-	-	30	11	44	10	20	20	20	175
Philippines	2	-	-	11	14	10	40	10	-	10	-	28	125
Taiwan	-	-	-	-	10	20	10	70	-	-	-	-	110
Thailand	-	10	10	15	-	-	-	20	10	10	20	-	95
Lebanon	10	-	10	-	-	20	10	10	-	-	10	10	80
Cyprus	-	-	-	-	10	30	-	20	-	10	1	-	71
Iran	-	-	-	-	-	10	20	10	1	20	-	10	71
Vietnam	-	-	-	10	10	-	12	-	-	20	-	-	52
Indonesia	20	-	10	10	-	-	1	-	-	-	-	-	41
Jordan	-	-	-	10	-	-	-	-	-	30	-	-	40
Saudi arabia	-	10	-	-	-	-	-	-	20	10	-	-	40
Other Asia	10	10	10	31	20	40	51	-	20	50	16	40	298
Oceania	849	678	879	984	1 034	1 095	1 470	1 527	1 349	1 238	976	1 008	13 087
Australia	709	587	707	890	873	872	1 287	1 258	1 132	1 057	793	854	11 019
New zealand	140	91	172	94	161	213	183	269	217	181	183	154	2 058
Other Oceania	-	-	-	-	-	10	-	-	-	-	-	-	10
Not Stated	3 765	4 267	2 079	1 142	3 819	3 113	6 655	4 924	2 185	2 202	1 977	5 584	41 712
Total	214 663	164 953	189 057	202 157	199 215	175 247	203 378	213 779	191 393	176 593	180 463	225 390	2 336 288

Table 10: Total Arrivals by Boarder Post and Continent of nationality - Year 2009

	Africa	America	Europe	Asia	Oceania	Not Stated	Total
Road							
Tlokweng gate	236 110	4 330	12 600	10 570	760	400	264 770
Parrshalt	20 450	120	670	90	100	70	21 500
Mamono	93 730	990	8 240	660	580	160	104 360
Sikwane	17 690	190	470	60	20	50	18 480
Ramotswa	23 050	130	2 040	830	90	10	26 150
Ramokgwebana road	806 370	520	4 610	530	200	2 610	814 840
Kazungula road	70 360	8 780	18 890	8 200	2 470	110	108 810
Mohembo	10 340	860	9 490	80	1 170	30	21 970
Plaatjan	20 500	790	3 990	170	190	30	25 670
Pointdrift	9 580	610	4 200	30	180	40	14 640
Ngoma	29 810	720	10 180	220	680	270	41 880
Zanzibar	3 075	40	312	1	19	4	3 451
Makopong	853	1	13	1	1	3	872
Martinsdrift	134 150	1 400	8 540	1 640	1 660	640	148 030
Pandamatenge	929	29	231	8	8	-	1 205
Kazungula ferry	144 980	8 040	18 630	1 320	3 210	150	176 330
Phitshanemolopo	8 810	10	180	70	-	50	9 120
Bray	4 165	4	20	-	3	1	4 193
Ramatlabama road	127 730	670	2 130	3 140	120	1 970	135 760
Pioneer gate	138 010	1 050	4 710	2 960	230	870	147 830
Bokspits	2 589	44	87	6	1	71	2 798
Tshabobg	5 525	9	290	88	9	44	5 965
Kasane	18 040	1 090	3 100	30	190	120	22 570
Maitengwe	26 830	10	30	10	-	70	26 950
Matsiloje	40 270	90	230	-	10	50	40 650
Middlepits	3 043	4	26	-	1	2	3 076
Two rivers	1 388	12	295	-	15	10	1 720
Limpopo valley	297	357	183	-	34	1	872
Dobe	679	37	350	-	7	14	1 087
Kwando	163	2 489	137	3	8	11	2 811
Shakawe	18	1	-	-	-	-	19
Rail							
Ramokgwebana Rail	18 310	80	500	10	40	40	18 980
Air							
Sir Seretse khama Airport	48 630	6 480	13 610	15 210	1 320	420	85 670
Francistown airport	1 900	119	323	64	66	7	2 479
Maun airport	4 780	6 910	11 070	500	1 240	140	24 640
Selibepikwe airport	208	6	99	2	2	-	317
Orapa	124	1	5	-	1	1	132
Kasane airport	1 379	972	1 299	83	283	5	4 021
Sowa Airport	800	1	126	3	3	2	935
Jwaneng	631	35	66	2	1	-	735
Total	2 076 296	48 031	141 972	46 591	14 922	8 476	2 336 288

Table 11: Total Arrivals by Boarder Post and Month of Arrival - 2009

	January	February	March	April	May	June	July	August	September	October	November	December	Total
Ramokgwebana road	89 820	58 110	65 890	75 430	78 490	60 900	71 580	69 390	55 790	50 730	60 260	78 450	814 840
Tlokweng gate	20 910	18 910	21 920	23 610	23 100	22 450	24 980	22 850	24 070	24 010	23 920	14 040	264 770
Kazungula ferry	17 230	14 410	14 260	14 970	14 730	11 520	15 280	15 760	14 530	14 320	13 210	16 110	176 330
Martinsdrift	10 020	9 550	10 710	10 340	11 200	11 360	13 580	14 120	12 700	11 800	9 940	22 710	148 030
Pioneer gate	9 360	9 080	20 980	11 670	10 790	11 320	11 640	11 610	12 040	11 600	11 410	16 330	147 830
Ramatlabama road	10 210	8 900	10 090	11 720	11 220	10 250	12 010	11 430	11 660	11 200	10 770	16 300	135 760
Kazungula road	9 200	6 920	7 990	9 470	8 810	8 210	11 260	10 830	8 870	10 250	7 440	9 560	108 810
Mamono	10 310	6 290	7 450	10 470	8 890	7 140	7 710	9 300	8 470	8 470	7 920	11 940	104 360
Sir Seretse khama	7 020	6 390	7 650	6 380	7 190	6 940	7 350	7 460	7 540	7 540	8 220	5 990	85 670
Ngoma	3 420	2 150	2 670	3 310	3 610	3 130	2 350	5 160	4 370	3 950	3 340	4 420	41 880
Matsiloje	6 650	2 530	2 500	3 830	3 090	2 830	3 180	3 530	2 760	2 730	2 560	4 460	40 650
Maitengwe	4 450	2 050	1 890	2 620	1 990	1 870	2 080	2 240	2 090	1 690	1 550	2 430	26 950
Ramotswa	1 890	1 250	1 810	1 790	2 210	2 330	2 470	2 280	2 360	2 400	1 960	3 400	26 150
Plaatjan	490	700	370	1 190	680	650	840	7 930	7 370	460	4 120	870	25 670
Maun airport	930	980	1 750	2 180	2 610	2 210	2 660	3 020	2 530	2 460	1 880	1 430	24 640
Kasane	1 530	1 340	1 600	1 490	1 500	1 740	2 130	2 230	2 300	2 060	2 170	2 480	22 570
Mohembo	1 370	880	870	1 280	1 460	1 220	2 750	3 280	2 370	2 460	2 190	1 840	21 970
Parrshalt	900	970	1 350	2 500	1 400	1 810	1 760	2 000	1 720	1 360	1 220	4 510	21 500
ramokgwebana Rail	3 930	2 810	2 390	1 940	1 420	1 130	1 000	880	970	1 000	850	660	18 980
Sikwane	1 170	1 140	1 330	1 760	1 400	1 250	1 640	1 670	1 450	1 510	1 500	2 660	18 480
Pointdrift	1 040	5 040	570	750	640	800	990	1 480	970	970	800	590	14 640
Phitshanemolopo	830	2 970	530	540	410	440	460	660	530	500	410	840	9 120
Tshabobg	377	272	412	570	59	734	692	600	603	576	441	629	5 965
Bray	270	236	372	411	304	440	382	432	435	328	299	284	4 193
Kasane airport	154	111	170	361	415	420	126	751	618	56	425	414	4 021
Zanzibar	138	21	181	112	264	396	366	532	494	384	240	323	3 451
Middlepits	237	235	223	324	197	230	272	348	211	235	210	354	3 076
Kwando	91	94	144	193	258	272	373	681	228	241	153	83	2 811
Bokspits	213	195	182	232	263	202	377	205	243	166	248	272	2 798
Francistown airport	92	94	130	106	125	241	241	292	299	257	255	347	2 479

Table 11: Total Arrivals by Boarder Post and Month of Arrival - 2009 (cont'd)

	January	February	March	April	May	June	July	August	September	October	November	December	Total
Two rivers	69	58	141	243	104	180	215	159	162	155	100	134	1 720
Pandamatenge	66	66	87	109	126	89	109	141	123	176	54	59	1 205
Dobe	50	23	112	-	-	110	190	195	124	86	78	119	1 087
Sowa Airport	78	54	94	60	109	109	112	58	45	82	79	55	935
Makopong	49	45	55	53	90	77	31	79	95	108	52	138	872
Limpopo valley	39	33	112	53	45	90	78	90	129	44	81	78	872
Jwaneng	20	15	48	47	-	131	64	60	42	190	73	45	735
Selibephikwe airport	11	24	18	35	15	24	43	28	57	33	13	16	317
Orapa	29	7	6	8	1	-	7	16	12	6	20	20	132
Shakawe	-	-	-	-	-	2	-	2	13	-	2	-	19
Total	214 663	164 953	189 057	202 157	199 215	175 247	203 378	213 779	191 393	176 593	180 463	225 390	2 336 288

Table 12: Total Arrivals by Month of Arrival and mode of travel - 2009

	Rail	Road	Air	Other	Not Stated	Total
January	3 930	202 312	8 373	48	-	214 663
February	2 810	154 431	7 712	-	-	164 953
March	2 390	176 675	9 978	14	-	189 057
April	1 940	190 987	9 230	-	-	202 157
May	1 420	187 285	10 510	-	-	199 215
June	1 130	163 950	10 167	-	-	175 247
July	1 000	191 690	10 688	-	-	203 378
August	880	201 111	11 788	-	-	213 779
September	970	179 139	11 284	-	-	191 393
October	1 001	164 692	10 725	164	11	176 593
November	850	168 349	11 143	104	17	180 463
December	660	214 429	10 301	-	-	225 390
Total Arrivals	18 981	2 195 050	121 899	330	28	2 336 288
Percent	0.81	93.95	5.22	0.01	0.00	100.00

Table 13: Total Arrivals by Month and Quarter for Years 1999 - 2009

Month	1999	2000	2001	2002	2003	2004	2005	2006	2007	2008	2009
January	156,168	177,314	158,245	164,526	165,224	178,461	188,193	171,519	200,776	162,070	214 663
February	110,762	124,349	116,630	135,340	146,459	151,140	152,307	79,914	121,972	170,089	164 953
March	117,392	194,500	134,999	154,379	160,986	160,143	177,844	165,986	157,346	196,316	189 057
1 st Quarter	384,322	496,163	409,874	454,245	472,669	489,744	518,344	417,419	480,094	528,475	568 673
April	184,780	145,192	135,026	158,707	168,918	173,633	132,755	133,006	169,768	217,363	202 157
May	126,966	160,500	135,965	149,792	164,901	160,701	145,624	123,065	127,144	219,532	199 215
June	131,150	205,696	145,543	152,151	168,511	155,681	168,295	135,013	162,750	200,195	175 247
2 nd Quarter	442,896	511,388	416,534	460,650	502,330	490,015	446,674	391,084	459,662	637,090	576 619
July	144,903	301,203	136,113	166,001	184,865	175,194	147,845	157,743	188,142	236,655	203 378
August	101,734	143,945	159,270	169,209	185,390	178,002	143,736	165,530	222,798	230,385	213 779
September	140,298	185,146	158,513	156,119	174,374	164,467	200,444	203,344	203,212	235,308	191 393
3 rd Quarter	386,935	630,294	453,896	491,329	544,629	517,663	492,025	526,617	614,152	702,348	608 550
October	158,229	188,457	153,963	163,895	170,984	170,299	188,131	140,969	215,857	237,691	176 593
November	104,362	138,095	117,820	159,823	179,793	154,557	145,042	160,160	212,009	220,919	180 463
December	161,205	180,973	179,234	187,877	196,114	154,471	197,811	183,808	219,179	282,363	225 390
4 th Quarter	423,796	507,525	451,017	511,595	546,891	479,327	530,984	484,937	647,045	740,973	582 446
Total	1,637,949	2,145,370	1,731,321	1,917,819	2,066,519	1,976,749	1,988,027	1,820,057	2,200,953	2,608,886	2 336 288

Table 14 : Total Departures by nationality and sex - 2009

	Male	Female	Total
Africa	1 300 781	790 138	2 090 919
Zimbabwe	538 468	471 505	1 009 973
South Africa	523 484	203 447	726 931
Zambia	113 224	63 120	176 344
Namibia	80 930	34 021	114 951
Malawi	9 784	3 404	13 188
Lesotho	3 828	3 210	7 038
Kenya	4 575	2 432	7 007
Swaziland	4 550	1 642	6 192
Mozambique	4 702	1 487	6 189
Tanzania	4 079	1 458	5 537
Nigeria	2 443	806	3 249
Uganda	2 084	564	2 648
DRC	1 802	406	2 208
Mauritius	1 273	625	1 898
Ghana	1 104	496	1 600
Angola	782	273	1 055
Ethiopia	494	272	766
Egypt	454	81	535
Somalia	230	40	270
Cameroon	212	50	262
Sierra leone	160	90	250
Rwanda	170	52	222
Senegal	161	10	171
Sudan	111	11	122
Eritrea	110	11	121
Madagascar	90	31	121
Libya	80	40	120
Cote d ivoire	71	21	92
Algeria	60	30	90
Gambia	73	12	85
Guinea	60	20	80
Reunion	80	-	80
Sychelles	30	40	70
Comoro	30	30	60
Tunisia	-	50	50
Benin	30	10	40
Mali	40	-	40
Other Africa	923	341	1 264

Table 14: Total Departures by nationality and sex - 2009 - (cont'd)

	Male	Female	Total
America	22 135	24 429	46 564
USA	17 551	19 933	37 484
Canada	3 347	3 274	6 621
Brazil	329	343	672
Mexico	142	181	323
Argentina	123	188	311
Cuba	150	71	221
Jamaica	90	131	221
Chile	93	43	136
Trinidad	70	60	130
Colombia	83	34	117
Belize	31	34	65
Barbados	31	20	51
Peru	11	31	42
Other America	84	86	170
Europe	75 354	61 919	137 273
United Kingdom	26 158	19 449	45 607
Germany	13 617	12 085	25 702
Netherlands	6 947	6 143	13 090
France	5 049	3 964	9 013
Italy	3 643	2 991	6 634
Spain	2 367	2 646	5 013
Switzerland	2 513	2 341	4 854
Belgiumluxenburg	2 461	1 840	4 301
Ireland	1 567	1 560	3 127
Denmark	1 547	1 269	2 816
Sweden	1 535	1 082	2 617
Austria	1 417	943	2 360
Portugal	1 373	690	2 063
Norway	872	1 149	2 021
Russia	971	873	1 844
Poland	490	481	971
Finland	375	464	839
Czechoslovakia	398	296	694
Yugoslavia	420	210	630
Hungary	272	212	484
Greece	244	212	456
Bulgaria	282	150	432
Romania	151	182	333
Slovakia	121	152	273
Croatia	90	80	170
Ukraine	110	30	140
Luxembourg	63	71	134
Estonia	30	61	91

Table 14 : Total Departures by nationality and sex - 2009 - (cont'd)

	Male	Female	Total
Lithuania	40	40	80
Latvia	10	50	60
Other Europe	221	203	424
Asia	29 129	14 833	43 962
India	12 449	5 446	17 895
Japan	3 187	3 922	7 109
China	5 167	1 854	7 021
Pakistan	1 902	467	2 369
Sri lanka	1 320	775	2 095
Korea	922	810	1 732
Bangladesh	1 186	243	1 429
Israel	1 023	247	1 270
Singapore	321	210	531
Malaysia	310	151	461
Philippines	237	125	362
Taiwan	130	100	230
Lebanon	162	30	192
Hong kong	111	63	174
Cyprus	82	80	162
Turkey	90	72	162
Thailand	60	92	152
Iran	103	33	136
Indonesia	60	11	71
Vietnam	70	-	70
Iraq	40	10	50
Other Asia	207	92	299
Oceania	7 867	7 882	15 749
Australia	6 175	6 352	12 527
New zealand	1 692	1 500	3 192
Other Oceania	-	30	30
Not Stated	3 840	2 022	5 864
Total Departures	1 439 106	901 223	2 340 331

Table 15 : Total Departures by Country of Residence and sex - 2009

	Male	Female	Total
Africa	1 327 006	805 602	2 132 608
Zimbabwe	433 859	435 577	869 436
Republic of South Africa	503 049	181 527	684 576
Botswana	179 939	86 189	266 128
Zambia	102 818	56 933	159 751
Namibia	83 273	35 843	119 116
Malawi	4 517	1 140	5 657
Lesotho	2 949	2 529	5 478
Swaziland	3 806	1 464	5 270
Mozambique	2 900	984	3 884
Tanzania	2 645	786	3 431
Kenya	1 879	902	2 781
Democratic Republic of	1 039	144	1 183
Uganda	829	242	1 071
Angola	673	234	907
Nigeria	422	244	666
Mauritius	469	184	653
Ghana	335	150	485
Ethiopia	204	110	314
Egypt	82	51	133
Rwanda	101	25	126
Madagascar	90	30	120
Senegal	102	10	112
Sudan	100	11	111
Reunion	90	20	110
Sierra leone	70	20	90
Gambia	63	22	85
Cameroon	61	20	81
Sychelles	50	30	80
Cote d ivoire	61	-	61
Eritrea	60	-	60
Tunisia	40	20	60
Comoro	30	30	60
Somalia	60	-	60
Algeria	20	31	51
Other Africa	321	100	421

Table 15 : Total Departures by Country of Residence and sex - 2009 (cont'd)

	Male	Female	Total
America	18 539	21 236	39 775
United States America	15 139	17 664	32 803
Canada	2 595	2 748	5 343
Brazil	210	273	483
Mexico	132	160	292
Chile	102	73	175
Argentina	63	105	168
Colombia	82	34	116
Jamaica	20	40	60
Trinidad	40	20	60
Cuba	30	20	50
Venezuela	20	20	40
Other America	106	79	185
Europe	54 292	48 362	102 654
United Kingdom	14 991	12 436	27 427
Germany	11 248	10 218	21 466
Netherlands	5 756	5 591	11 347
France	4 138	3 475	7 613
Italy	2 793	2 726	5 519
Spain	2 261	2 420	4 681
Switzerland	2 490	2 014	4 504
Belgiumluxenburg	1 646	1 520	3 166
Denmark	1 234	1 178	2 412
Sweden	1 262	995	2 257
Austria	1 147	806	1 953
Norway	737	1 050	1 787
Ireland	846	887	1 733
Russia	760	699	1 459
Portugal	755	339	1 094
Poland	319	380	699
Finland	315	352	667
Czechoslovakia	388	235	623
Hungary	231	202	433
Greece	165	142	307
Romania	120	130	250
Slovakia	120	120	240
Luxembourg	94	82	176
Ukraine	100	10	110
Yugoslavia	60	50	110
Bulgaria	61	40	101
Croatia	20	60	80
Lithuania	30	40	70
Estonia	30	31	61
Latvia	10	30	40

Table 15: Total Departures by Country of Residence and sex - 2009 (cont'd)

	Male	Female	Total
Monaco	20	20	40
Other Europe	145	84	229
Asia	11 449	7 233	18 682
Japan	2 863	3 736	6 599
India	3 149	976	4 125
China	1 927	584	2 511
Korea	601	620	1 221
Israel	722	217	939
Singapore	303	234	537
Pakistan	343	72	415
Hong kong	188	114	302
Sri lanka	151	151	302
Malaysia	220	81	301
Bangladesh	210	30	240
Thailand	90	83	173
Taiwan	80	70	150
Turkey	92	33	125
Lebanon	72	31	103
Philipines	56	44	100
Cyprus	43	40	83
Iran	70	1	71
Vietnam	20	30	50
Other Asia	249	86	335
Oceania	6 769	7 222	13 991
Australia	5 613	6 003	11 616
New zealand	1 156	1 199	2 355
Other Oceania	-	20	20
Not Stated	21 063	11 568	32 631
Total Departures	1 439 118	901 223	2 340 341

Table 16: Total departures by Nationality and Age group - 2009

	0-4	5-9	10-14	15-19	20-24	25-29	30-34	35-39	40-44	45-49	50-54	55-59	60-64	65+	Not Stated	Total
Nationality																
Africa	4 704	1 675	5 539	42 239	180 642	353 138	366 972	338 733	262 052	184 723	144 014	94 259	52 056	54 840	5 333	2 090 919
Zimbabwe	1 683	350	1 488	14 924	101 185	220 805	214 064	178 676	116 369	62 929	45 388	25 890	12 194	11 177	2 851	1 009 973
South Africa	2 133	1 163	2 602	18 245	45 377	72 444	89 534	101 217	101 275	87 853	76 364	56 081	33 197	37 594	1 852	726 931
Zambia	450	80	541	3 199	16 874	34 996	38 343	31 472	20 822	13 674	8 106	4 010	2 075	1 362	340	176 344
Namibia	285	21	597	4 564	12 845	17 613	15 238	16 385	14 533	12 975	8 499	5 054	2 728	3 434	180	114 951
Malawi	20	-	60	220	1 060	1 521	2 062	2 512	1 833	1 443	1 223	502	411	291	30	13 188
Lesotho	31	-	50	212	562	973	1 172	1 154	1 063	600	445	321	212	223	20	7 038
Kenya	20	-	50	171	532	612	1 216	1 349	1 186	881	514	272	93	111	-	7 007
Swaziland	20	20	21	52	411	1 062	1 013	1 240	780	791	391	171	110	100	10	6 192
Mozambique	10	10	30	60	460	1 011	1 192	1 123	833	631	294	233	220	52	30	6 189
Tanzania	11	11	10	172	491	643	773	1 016	644	406	642	493	84	131	10	5 537
Nigeria	10	-	20	110	110	178	486	560	571	503	431	80	120	70	-	3 249
Uganda	10	20	-	50	190	342	463	455	411	280	132	161	92	42	-	2 648
DRC	11	-	10	50	111	190	392	413	374	272	184	141	10	50	-	2 208
Mauritius	-	-	10	70	162	184	211	210	194	334	250	141	82	50	-	1 898
Ghana	10	-	-	60	70	141	180	151	132	243	203	221	137	52	-	1 600
Angola	-	-	-	30	61	70	81	150	170	190	161	90	31	11	10	1 055
Ethiopia	-	-	-	-	21	50	131	150	150	61	92	31	50	30	-	766
Egypt	-	-	20	-	40	91	150	70	71	11	31	11	40	-	-	535
Somalia	-	-	-	-	-	40	20	50	50	50	20	-	30	10	-	270
Cameroon	-	-	-	20	-	20	40	50	60	31	20	21	-	-	-	262
Sierra Leone	-	-	10	10	-	-	-	50	70	30	30	10	30	10	-	250
Rwanda	-	-	-	-	10	20	30	-	100	22	20	10	10	-	-	222
Senegal	-	-	-	-	-	10	30	-	20	21	40	50	-	-	-	171
Sudan	-	-	-	-	-	-	20	30	-	10	20	12	20	10	-	122
Eritrea	-	-	-	-	10	21	20	10	30	-	-	20	-	10	-	121
Madagascar	-	-	10	-	30	-	10	10	30	11	20	-	-	-	-	121
Libya	-	-	-	-	10	-	20	40	-	20	20	10	-	-	-	120

Table 16: Total departures by Nationality and Age group - 2009 (cont'd)

	0-4	5-9	10-14	15-19	20-24	25-29	30-34	35-39	40-44	45-49	50-54	55-59	60-64	65+	Not Stated	Total
Nationality																
Cote d ivoire	-	-	-	-	-	-	-	10	30	20	12	20	-	-	-	92
Algeria	-	-	-	-	10	10	20	-	10	-	10	-	10	20	-	90
Gambia	-	-	-	-	-	10	1	10	10	30	21	3	-	-	-	85
Guinea	-	-	-	10	-	30	-	-	10	10	10	10	-	-	-	80
Reunion	-	-	-	-	10	10	10	20	-	10	10	10	-	-	-	80
Sychelles	-	-	-	-	-	10	-	-	10	20	10	20	-	-	-	70
Comoro	-	-	-	-	-	-	-	10	10	20	10	10	-	-	-	60
Tunisia	-	-	-	-	-	20	-	-	-	-	10	10	10	-	-	50
Benin	-	-	10	-	-	10	-	-	-	-	20	-	-	-	-	40
Mali	-	-	-	-	-	-	-	-	10	20	10	-	-	-	-	40
Other Africa	-	-	-	10	-	1	50	140	191	321	351	140	60	-	-	1 264
America	158	42	238	1 620	3 849	3 993	3 743	3 092	3 256	3 771	4 333	4 492	4 793	9 116	68	46 564
USA	147	42	188	1 295	3 000	3 102	2 884	2 220	2 584	3 056	3 332	3 579	3 987	8 021	47	37 484
Canada	1	-	50	218	597	666	555	446	438	479	755	706	720	969	21	6 621
Brazil	-	-	-	20	92	82	81	130	71	90	52	34	10	10	-	672
Mexico	-	-	-	13	51	26	35	51	22	43	31	30	11	10	-	323
Argentina	-	-	-	-	31	22	90	84	10	10	20	1	11	32	-	311
Cuba	10	-	-	-	-	-	10	50	41	20	50	20	10	10	-	221
Jamaica	-	-	-	-	20	10	20	51	30	20	20	40	10	-	-	221
Chile	-	-	-	20	10	31	11	10	-	-	10	20	1	23	-	136
Trinidad	-	-	-	-	-	40	10	10	10	10	-	10	10	30	-	130
Colombia	-	-	-	14	24	14	11	10	-	22	22	-	-	-	-	117
Belize	-	-	-	10	11	-	12	-	20	1	-	-	10	1	-	65
Barbados	-	-	-	20	-	-	-	-	-	20	-	10	1	-	-	51
Peru	-	-	-	-	-	-	11	10	10	-	-	11	-	-	-	42
Other America	-	-	-	10	13	-	13	20	20	-	41	31	12	10	-	170

Table 16: Total departures by Nationality and Age group - 2009 (cont'd)

	0-4	5-9	10-14	15-19	20-24	25-29	30-34	35-39	40-44	45-49	50-54	55-59	60-64	65+	Not Stated	Total
Nationality																
Europe	172	33	557	3 913	8 066	10 542	14 111	11 289	13 783	14 386	15 781	13 820	13 397	17 162	261	137 273
United Kingdom	41	10	135	1 686	2 767	3 284	3 718	3 315	4 126	4 785	5 213	4 900	5 114	6 450	63	45 607
Germany	41	10	42	590	1 040	1 517	2 067	1 991	2 989	2 720	2 997	2 681	2 360	4 591	66	25 702
Netherlands	10	1	82	314	1 278	1 416	1 389	772	962	1 205	1 328	1 447	1 412	1 444	30	13 090
France	30	-	92	276	404	608	926	824	1 022	1 082	1 232	704	955	858	-	9 013
Italy	-	1	21	107	204	444	1 308	840	672	743	695	621	427	551	-	6 634
Spain	-	-	31	123	93	416	1 080	597	698	479	659	324	271	232	10	5 013
Switzerland	10	-	12	122	306	306	554	426	375	442	562	539	574	614	12	4 854
Belgiumlux	-	-	21	143	271	408	491	445	401	557	594	410	293	267	-	4 301
Ireland	20	-	-	191	292	278	252	297	268	363	436	334	182	204	10	3 127
Denmark	-	-	20	80	182	171	181	216	212	224	231	253	392	644	10	2 816
Sweden	10	-	-	71	243	264	243	140	288	321	241	271	214	301	10	2 617
Austria	10	1	20	51	93	199	237	166	299	189	281	210	252	352	-	2 360
Portugal	-	-	30	75	61	162	197	203	202	279	238	342	152	122	-	2 063
Norway	-	-	1	34	430	253	243	117	131	148	96	195	213	160	-	2 021
Russia	-	-	-	-	81	200	306	210	269	261	215	162	80	50	10	1 844
Poland	-	-	20	10	50	50	152	163	103	82	187	64	60	20	10	971
Finland	-	10	-	10	60	90	101	62	91	33	111	50	111	90	20	839
Czechoslovakia	-	-	-	10	10	110	143	102	60	101	13	12	62	71	-	694
Yugoslavia	-	-	-	-	40	60	130	40	110	60	100	30	60	-	-	630
Hungary	-	-	-	-	30	40	92	91	60	20	41	40	50	20	-	484
Greece	-	-	-	-	10	-	50	40	93	20	101	41	50	51	-	456
Bulgaria	-	-	-	-	20	32	80	70	90	40	40	10	20	30	-	432
Romania	-	-	-	-	11	71	30	41	60	20	40	40	10	10	-	333
Slovakia	-	-	30	-	10	31	60	20	22	20	20	30	30	-	-	273
Croatia	-	-	-	-	10	20	10	10	30	-	20	50	10	-	10	170
Ukraine	-	-	-	20	-	-	10	30	30	30	20	-	-	-	-	140

Table 16: Total departures by Nationality and Age group - 2009 (cont'd)

	0-4	5-9	10-14	15-19	20-24	25-29	30-34	35-39	40-44	45-49	50-54	55-59	60-64	65+	Not Stated	Total
Nationality																
Luxembourg	-	-	-	-	-	10	10	10	30	22	20	20	12	-	-	134
Estonia	-	-	-	-	-	11	30	20	-	10	-	-	20	-	-	91
Lithuania	-	-	-	-	10	20	-	10	10	10	-	10	-	10	-	80
Latvia	-	-	-	-	10	-	-	-	20	30	-	-	-	-	-	60
Other Europe	-	-	-	-	50	71	21	21	60	90	50	30	11	20	-	424
Asia	102	30	243	676	2 382	5 007	6 513	6 874	5 275	4 721	3 333	2 497	2 621	3 608	80	43 962
India	50	20	122	362	882	2 055	3 358	3 398	2 235	1 862	1 271	953	684	643	-	17 895
Japan	10	-	20	42	130	590	672	672	343	324	253	551	1 191	2 281	30	7 109
China	30	-	10	110	563	872	892	1 233	1 106	1 072	651	242	130	90	20	7 021
Pakistan	1	-	10	20	253	245	519	370	441	211	121	88	40	50	-	2 369
Sri lanka	10	10	20	50	80	250	262	271	254	231	332	101	112	92	10	2 085
Korea	-	-	50	40	110	210	171	90	170	250	200	140	161	140	-	1 732
Bangladesh	-	-	-	-	110	443	292	222	171	111	40	40	-	-	-	1 429
Israel	1	-	10	20	132	103	101	82	153	144	141	92	121	160	10	1 270
Singapore	-	-	-	10	30	30	51	90	80	70	60	70	30	10	-	531
Malaysia	-	-	-	-	10	90	10	71	100	80	30	20	20	30	-	461
Philipines	-	-	-	1	2	10	11	42	70	83	51	10	41	31	10	362
Taiwan	-	-	-	-	-	-	10	20	20	50	10	50	30	40	-	230
Lebanon	-	-	-	-	-	30	22	30	10	80	10	-	10	-	-	192
Hong kong	-	-	1	-	-	-	30	41	21	10	40	10	1	20	-	174
Cyprus	-	-	-	-	10	-	-	10	10	22	20	50	20	20	-	162
Turkey	-	-	-	-	30	-	11	30	10	40	20	20	-	1	-	162
Thailand	-	-	-	21	20	-	30	31	20	10	10	-	10	-	-	152
Iran	-	-	-	-	-	42	10	30	11	11	2	20	10	-	-	136
Indonesia	-	-	-	-	-	-	10	11	10	20	10	10	-	-	-	71
Vietnam	-	-	-	-	-	-	30	30	-	10	-	-	-	-	-	70

Table 16: Total departures by Nationality and Age group - 2009 (cont'd)

	0-4	5-9	10-14	15-19	20-24	25-29	30-34	35-39	40-44	45-49	50-54	55-59	60-64	65+	Not Stated	Total
Nationality																
Iraq	-	-	-	-	-	-	-	10	-	10	10	20	-	-	-	50
Other Asia	-	-	-	-	20	37	21	90	40	20	51	10	10	-	-	299
Oceania																
Australia	10		30	445	805	1 602	1 548	950	854	1 091	1 189	1 256	1 293	1 424	30	12 527
New Zealand	10		-	90	280	365	390	170	241	294	311	378	349	314	-	3 192
Other Oceania	-		-	-	-	-	10	-	-	-	10	10	-	-	-	30
Not Stated	13	1	22	96	364	811	812	571	514	677	589	443	382	466	113	5 874
Total Departures	5 169	1 781	6 629	49 079	196 388	375 458	394 099	361 679	285 975	209 663	169 560	117 155	74 891	86 930	5 885	2 340 341

Table 17: Total departures by Country of residence and Age group - 2009

	0-4	5-9	10-14	15-19	20-24	25-29	30-34	35-39	40-44	45-49	50-54	55-59	60-64	65+	Not Stated	Total
Country of residence																
Africa	4 599	1 664	5 889	43 324	182 246	355 173	370 113	343 488	267 359	190 170	149 743	98 427	55 947	59 143	5 313	2 132 598
Zimbabwe	1 402	290	1 171	13 316	95 674	202 671	185 991	146 093	91 543	49 385	35 904	21 515	10 758	11 313	2 400	869 426
Africa	2 045	1 020	2 201	16 756	44 304	70 089	86 032	97 594	94 063	81 442	70 445	51 330	30 062	35 404	1 789	684 576
Botswana	348	203	1 322	5 220	11 086	26 808	41 274	48 590	43 880	30 626	25 176	15 367	9 017	6 647	574	266 138
Zambia	441	70	400	2 796	15 962	33 304	35 690	28 432	17 792	11 302	6 454	3 371	2 045	1 392	290	159 741
Namibia	282	21	614	4 614	12 753	17 757	15 862	17 153	15 474	13 658	8 956	5 198	3 004	3 570	200	119 116
Malawi	-	10	10	80	500	700	940	950	751	661	452	222	221	160	-	5 657
Lesotho	30	-	50	181	533	822	881	883	683	460	372	220	160	183	20	5 478
Swaziland	20	20	31	71	280	935	802	1 060	702	591	397	151	120	80	10	5 270
Mozambique	10	10	20	20	290	691	651	663	501	481	202	175	130	30	10	3 884
Tanzania	-	10	10	70	301	443	533	601	452	291	401	216	33	60	10	3 431
Kenya	10	-	-	40	180	340	514	491	451	296	163	114	101	81	-	2 781
DRC	1	-	-	10	71	140	232	212	181	111	93	81	11	40	-	1 183
Uganda	-	10	10	40	70	171	212	194	100	80	51	70	41	22	-	1 071
Angola	-	-	-	10	60	40	93	100	170	162	130	80	31	21	10	907
Nigeria	10	-	10	20	31	22	61	80	160	131	41	30	30	40	-	666
Mauritius	-	-	10	30	50	80	91	60	94	56	60	31	61	30	-	653
Ghana	-	-	-	30	10	20	80	30	70	61	63	80	31	10	-	485
Ethiopia	-	-	-	-	10	40	50	31	50	21	40	51	11	10	-	314
Egypt	-	-	10	-	10	10	20	41	11	1	10	10	10	-	-	133
Rwanda	-	-	-	10	-	10	12	-	41	13	20	10	10	-	-	126
Madagascar	-	-	10	-	30	-	-	10	20	20	20	-	10	-	-	120
Senegal	-	-	-	-	-	10	10	-	10	21	41	20	-	-	-	112
Sudan	-	-	-	-	1	-	-	50	10	10	-	10	20	10	-	111
Reunion	-	-	-	-	10	20	30	20	10	10	10	-	-	-	-	110
Sierra leone	-	-	-	-	10	-	-	40	10	10	10	-	-	10	-	90
Gambia	-	-	-	-	-	20	1	10	10	20	21	3	-	-	-	85

Table 17: Total departures by Country of residence and Age group - 2009 (cont'd)

	0-4	5-9	10-14	15-19	20-24	25-29	30-34	35-39	40-44	45-49	50-54	55-59	60-64	65+	Not Stated	Total
Country of residence																
Cameroon	-	-	-	-	-	-	20	10	-	20	20	11	-	-	-	81
Seychelles	-	-	-	-	-	20	-	10	-	20	10	20	-	-	-	80
Cote d'Ivoire	-	-	-	-	-	-	-	-	10	20	31	-	-	-	-	61
Eritrea	-	-	-	-	-	-	-	-	10	20	10	20	-	-	-	60
Tunisia	-	-	-	-	-	-	10	-	-	10	30	-	10	-	-	60
Comoro	-	-	-	-	10	-	-	10	10	20	10	-	-	-	-	60
Somalia	-	-	-	-	-	-	10	-	30	-	-	-	10	10	-	60
Algeria	-	-	-	-	10	-	1	-	10	-	10	10	-	10	-	51
Other Africa	-	-	10	10	-	10	10	70	50	140	90	11	10	10	-	421
America	116	22	158	1 374	3 290	3 271	3 036	2 408	2 403	2 953	3 535	3 980	4 436	8 736	57	39 775
USA	105	22	118	1 100	2 623	2 605	2 427	1 835	2 027	2 432	2 816	3 181	3 768	7 707	37	32 803
Canada	-	-	40	196	485	544	409	377	244	414	512	594	616	892	20	5 343
Brazil	-	-	-	10	92	42	62	60	50	32	62	43	10	20	-	483
Mexico	-	-	-	13	21	36	35	31	22	33	30	50	11	10	-	292
Chile	-	-	-	21	10	30	11	-	20	-	20	30	-	33	-	175
Argentina	-	-	-	10	21	-	20	44	10	10	-	1	20	32	-	168
Colombia	-	-	-	14	24	4	20	10	-	12	22	10	-	-	-	116
Jamaica	-	-	-	-	-	-	10	-	10	-	10	30	-	-	-	60
Trinidad	-	-	-	-	-	10	-	10	10	-	10	-	10	10	-	60
Cuba	10	-	-	-	-	-	-	10	-	-	10	10	-	10	-	50
Venezuela	-	-	-	-	-	-	10	-	-	-	10	10	-	10	-	40
Other America	1	-	-	10	14	-	32	31	10	20	33	21	1	12	-	185

Table 17: Total departures by Country of residence and Age group - 2009 (cont'd)

	0-4	5-9	10-14	15-19	20-24	25-29	30-34	35-39	40-44	45-49	50-54	55-59	60-64	65+	Not Stated	Total
Country of residence																
Europe	140	12	383	3 168	6 904	8 920	12 290	8 452	9 773	10 217	10 808	9 427	9 466	12 438	256	102 654
UK	40	-	61	1 242	2 280	2 673	3 256	2 041	2 222	2 457	2 511	2 231	2 878	3 465	70	27 427
Germany	10	-	42	488	940	1 343	1 905	1 561	2 448	2 326	2 393	2 210	1 806	3 920	74	21 466
Netherlands	10	1	72	306	1 156	1 303	1 306	713	788	1 030	1 031	1 276	1 144	1 181	30	11 347
France	30	-	42	276	356	428	782	578	801	878	1 093	731	812	796	10	7 613
Italy	-	1	11	96	175	434	1 156	728	532	612	551	447	381	395	-	5 519
Spain	-	-	31	93	74	366	961	617	641	450	629	295	261	253	10	4 681
Switzerland	10	-	12	103	295	295	626	448	317	422	470	425	474	595	12	4 504
Belgiumlux	-	-	21	133	249	348	347	323	303	396	400	272	187	187	-	3 166
Denmark	-	-	20	90	163	181	171	166	171	203	220	232	352	443	-	2 412
Sweden	10	-	-	61	233	223	252	110	183	240	211	250	183	291	10	2 257
Austria	10	-	10	41	72	144	237	117	227	187	246	175	207	280	-	1 953
Norway	-	-	1	34	370	244	212	107	121	118	77	174	182	147	-	1 787
Ireland	20	-	-	120	240	273	163	183	130	80	240	142	71	71	-	1 733
Russia	-	-	-	-	91	160	213	169	209	221	184	102	60	40	10	1 459
Portugal	-	-	10	25	30	41	83	122	142	167	132	180	70	92	-	1 094
Poland	-	-	10	10	30	40	132	122	73	52	106	34	50	30	10	699
Finland	-	10	-	10	40	90	71	32	71	32	70	40	91	90	20	667
Czechoslovakia	-	-	-	10	10	90	154	61	61	91	23	11	41	71	-	623
Hungary	-	-	-	-	10	41	71	91	50	10	40	40	60	20	-	433
Greece	-	-	-	10	10	-	30	10	53	32	61	30	40	31	-	307
Romania	-	-	-	-	10	30	30	30	50	10	30	40	10	10	-	250
Slovakia	-	-	30	-	10	30	30	20	20	20	20	30	30	-	-	240

Table 17: Total departures by Country of residence and Age group - 2009 (cont'd)

	0-4	5-9	10-14	15-19	20-24	25-29	30-34	35-39	40-44	45-49	50-54	55-59	60-64	65+	Not Stated	Total
Country of residence																
Luxembourg	-	-	10	-	-	30	10	12	30	22	20	20	22	-	-	176
Ukraine	-	-	-	20	-	-	10	20	10	20	20	-	10	-	-	110
Yugoslavia	-	-	-	-	-	-	40	-	20	30	10	-	10	-	-	110
Bulgaria	-	-	-	-	10	11	10	30	10	-	10	-	10	10	-	101
Croatia	-	-	-	-	10	20	-	10	10	-	10	20	-	-	-	80
Lithuania	-	-	-	-	10	10	-	10	10	10	-	10	-	10	-	70
Estonia	-	-	-	-	-	11	10	10	-	10	-	-	20	-	-	61
Latvia	-	-	-	-	-	-	-	-	20	20	-	-	-	-	-	40
Monaco	-	-	-	-	-	-	10	-	20	10	-	-	-	-	-	40
Other Europe	-	-	-	-	30	61	12	11	30	61	-	10	4	10	-	229
Asia	41		51	318	801	1 897	2 197	2 167	1 839	1 856	1 313	1 345	1 889	2 928	50	18 692
Japan	10		10	42	100	520	590	571	310	311	202	491	1 151	2 261	30	6 599
India	-		10	120	214	420	731	644	522	491	293	243	233	204	-	4 125
China	20		-	20	153	402	323	382	364	352	202	122	111	40	20	2 511
Korea	-		10	30	80	160	110	60	80	140	170	110	151	120	-	1 221
Israel	1		20	23	132	61	81	61	102	95	91	91	91	90	-	939
Singapore	-		-	20	-	31	41	91	114	80	40	80	20	20	-	537
Pakistan	-		-	10	30	21	81	60	60	80	30	23	10	10	-	415
Hong kong	-		1	10	10	20	42	62	32	51	31	10	11	22	-	302
Sri lanka	10		-	20	-	20	2	30	40	40	50	20	10	60	-	302
Malaysia	-		-	-	10	40	-	51	80	40	30	10	10	30	-	301
Bangladesh	-		-	-	20	80	40	20	20	20	10	20	-	10	-	240
Thailand	-		-	11	10	10	30	22	30	20	20	-	20	-	-	173
Taiwan	-		-	-	-	10	10	10	10	30	10	20	10	40	-	150
Turkey	-		-	-	20	-	2	41	-	21	10	20	-	11	-	125
Lebanon	-		-	-	-	20	31	-	-	20	1	21	10	-	-	103

Table 17: Total departures by Country of residence and Age group - 2009 (cont'd)

	0-4	5-9	10-14	15-19	20-24	25-29	30-34	35-39	40-44	45-49	50-54	55-59	60-64	65+	Not Stated	Total
Country of residence																
Philippines	-	-	-	11	2	-	1	1	30	23	11	10	11	-	-	100
Cyprus	-	-	-	-	-	20	-	-	1	2	20	30	10	-	-	83
Iran	-	-	-	-	-	10	10	10	1	-	20	10	10	-	-	71
Vietnam	-	-	-	-	-	-	10	20	-	-	10	-	-	10	-	50
Other Asia	-	-	-	1	20	52	62	31	43	40	62	14	20	-	-	345
Oceania	20		30	515	986	1 835	1 656	1 003	975	1 110	1 247	1 481	1 480	1 623	30	13 991
Australia	10		30	435	826	1 525	1 351	878	852	928	986	1 183	1 234	1 348	30	11 616
New Zealand	10		-	80	160	310	305	115	123	182	251	298	246	275	-	2 355
Other Oceania	-		-	-	-	-	-	10	-	-	10	-	-	-	-	20
Not Stated	253	73	118	380	2 161	4 362	4 807	4 161	3 626	3 357	2 914	2 495	1 673	2 062	169	32 611
Total Departures	5 169	1 771	6 629	49 079	196 388	375 458	394 099	361 679	285 975	209 663	169 560	117 155	74 891	86 930	5 875	2 340 321

Table 18: Total Departure by Station, mode of travel and Month - 2009

	January	February	March	April	May	June	July	August	September	October	November	December	Total
Road													
Tlokweng gate	21 710	18 550	20 550	22 510	22 190	21 010	24 450	21 530	23 810	22 050	22 830	27 640	268 830
Parrshalt	2 660	910	1 140	2 720	1 510	1 270	1 640	1 860	1 450	1 330	1 320	1 300	19 110
Mamono	8 280	7 010	8 250	9 260	8 360	8 250	6 660	9 110	9 000	8 130	8 010	12 880	103 200
Sikwane	1 810	1 130	1 410	1 630	1 510	1 250	1 550	1 920	1 390	1 270	1 730	1 870	18 470
Ramotswa	2 430	1 800	2 130	2 210	2 840	2 730	3 180	2 950	3 170	2 840	2 410	3 980	32 670
Ramokgwebana road	59 550	50 610	61 720	74 030	73 640	69 010	75 160	73 350	60 770	55 660	56 460	99 660	809 620
Kazungula road	8 220	6 560	8 050	9 140	9 010	8 380	11 860	11 980	10 050	10 860	6 250	10 600	110 960
Mohembo	1 170	920	1 070	1 290	1 450	1 310	2 750	1 690	2 390	2 160	1 750	1 850	19 800
Plaatjan	580	550	3 750	1 060	830	690	930	800	640	470	420	700	11 420
Pointdrift	440	480	640	680	680	750	1 000	1 430	1 000	990	840	530	9 460
Ngoma	3 300	2 210	2 460	3 170	3 150	3 040	4 030	4 190	3 770	6 180	2 690	3 420	41 610
Zanzibar	221	11	2	162	308	312	436	607	407	151	317	246	3 180
Makopong	45	47	74	79	83	67	52	53	188	138	67	160	1 053
Martinsdrift	19 330	10 870	23 640	16 080	12 930	11 810	15 590	16 240	12 620	13 740	12 610	17 220	182 680
Pandamatenge	53	50	99	181	126	150	179	156	174	136	33	145	1 482
Kazungula ferry	15 950	14 620	14 300	15 350	15 680	12 360	15 810	16 110	15 040	14 830	12 880	18 440	181 370
Phitshanemolopo	480	320	580	530	420	510	470	690	510	530	460	800	6 300
Bray	301	178	366	420	308	365	339	383	339	377	290	266	3 932
Ramatlabama road	10 250	8 340	9 700	11 190	10 850	9 350	12 170	11 090	11 280	10 080	10 280	14 370	128 950
Pioneer gate	11 810	8 550	9 570	11 700	10 550	9 270	11 980	10 860	10 540	10 650	10 140	13 250	128 870
Bokspits	202	148	143	240	250	194	355	231	189	161	248	262	2 623
Tshabobg	446	266	284	489	565	423	613	514	483	608	540	581	5 812
Kasane	1 230	1 200	1 470	1 390	1 450	1 600	1 970	1 980	2 120	1 810	1 860	2 350	20 430
Maitengwe	2 430	3 720	1 750	2 530	1 890	1 850	2 010	2 370	2 000	2 010	1 500	4 160	28 220
Matsiloje	2 610	2 250	2 280	3 660	2 550	2 540	3 180	3 090	2 510	3 390	2 120	7 650	37 830
Middlepits	277	214	235	308	187	184	290	357	203	169	189	291	2 904

Table 18: Total Departure by Station, mode of travel and Month - 2009 (cont'd)

	January	February	March	April	May	June	July	August	September	October	November	December	Total
Two rivers	106	115	164	261	226	176	271	188	222	229	90	172	2 220
Limpopo valley	15	33	78	51	27	27	24	101	96	42	81	57	632
Dobe	88	28	91	79	-	198	199	154	120	136	23	166	1 282
Kwando	87	-	149	200	-	364	348	335	261	252	193	47	2 236
Shakawe	-	-	-	-	-	-	1	-	16	-	-	-	17
Rail													
Ramokgwebana Rail	3 540	2 940	3 830	3 990	3 340	3 130	2 680	2 470	2 160	2 500	2 250	2 920	35 750
Air													
Sir Seretse khama	5 280	5 980	6 960	6 770	6 820	6 440	7 150	7 770	7 600	7 030	7 740	7 940	83 480
Francistown airport	102	139	163	159	182	262	296	366	304	320	301	321	2 915
Maun airport	1 170	1 050	1 460	2 140	2 470	2 040	2 250	2 910	2 680	2 840	1 980	1 330	24 320
Selibephikwe airport	12	43	36	22	9	24	44	24	49	27	48	10	348
Orapa	2	7	36	6	-	2	-	10	2	3	10	11	89
Kasane airport	328	189	441	398	476	598	780	1 096	85	90	61	46	4 588
Sowa Airport	73	65	82	55	105	104	123	89	111	88	78	72	1 045
Jwaneng	14	15	53	48	75	57	67	5	51	112	103	33	633
Total	186 602	152 118	189 206	206 188	197 047	182 097	212 887	211 059	189 800	184 389	171 202	257 746	2 340 341

Table 19 : Total Departures by month and mode of travel - 2009

	Rail	Road	Air	Other	Not Stated	Total
January	3 550	175 965	6 996	91	-	186 602
February	2 940	141 657	7 521	-	-	152 118
March	3 830	176 035	9 339	2	-	189 206
April	4 040	192 479	9 669	-	-	206 188
May	3 390	183 462	10 164	21	-	197 037
June	3 230	169 292	9 575	-	-	182 097
July	2 730	199 101	10 850	206	-	212 887
August	2 480	196 188	12 391	-	-	211 059
September	2 190	176 294	11 018	298	-	189 800
October	2 970	170 581	10 632	193	3	184 379
November	2 270	158 081	10 549	288	14	171 202
December	2 980	244 384	9 850	252	280	257 746
Total Departures	36 600	2 183 519	118 554	1 351	297	2 340 321