

TOURISM STATISTICS ANNUAL REPORT- 2012

STATISTICS BOTSWANA

Statistics Botswana. Private Bag 0024 Botswana

Tel: (267) 367 1300. Fax: (267) 395 2201. Email: info@statsbots.org.bw Website: www.cso.gov.bw

**TOURISM STATISTICS
ANNUAL REPORT 2012**

Published by
Statistics Botswana, Private Bag 0024, Gaborone
Tel: (267) 3934968
Fax: (267) 3952201/3935628
Email: info@statsbots.org.bw
Website: www.cso.gov.bw

February 2015

COPYRIGHT RESERVED
Extracts may be published if source is duly acknowledged

ISBN: 978-99968-429-3-1

PREFACE

The Tourism report is one of the annual publications of Statistics Botswana. The information contained in this publication is compiled from the completed immigration arrival/departure forms. The report gives arrivals and departure statistics during 2012, and follows the 2010 report released in April 2014. Due to technical problems, the 2011 report is not yet available and will be released in due course to complete the series. Travelers entering and leaving the country are required to complete arrival and departure forms at all gazetted points of entry/departure. This covers all land borders and airports.

For more information and further enquiries, contact the Directorate of Stakeholder Relations at 3671300. All Statistics Botswana outputs/publications are available on the website at www.cso.gov.bw and also at Statistics Botswana Library (Head-Office, Gaborone).

We sincerely thank all stakeholders involved in the formulation of this report, their continued support and feedback, as we strive to better serve Botswana and all other important users of our products and services.



A.N. Majelantle
Statistician General
February 2015

TABLE OF CONTENTS

PREFACE	4
1.0 Introduction.....	6
2.0 Arrangement of Report.....	6
3.0 Total Arrivals.....	6
3.1 Arrivals by Nationality.....	6
3.2 Arrivals by Purpose of Entry.....	7
3.3 Distribution of Arrivals by Age Group.....	7
3.4 Arrivals by Border Post.....	8
3.5 Month of Arrival.....	8
3.6 Mode of Travel.....	8
4.0 Total Departures.....	9
4.1 Departures by Country of Residence.....	9
4.2 Departures by Age Group.....	9
4.3 Departures by Month, Mode of Travel and Border.....	9

List of Tables

Table 1:	Total Arrivals by Nationality and Sex.....	10
Table 2:	Total Arrivals by Country of Residence and Sex.....	13
Table 3:	Total Arrivals by Nationality and Purpose of Entry.....	16
Table 4:	Total Arrivals by Country of Residence and Purpose of Entry.....	18
Table 5:	Total Arrivals by Purpose of Entry and Age Group.....	21
Table 5A:	Purpose of Entry as a Percentage of age-Group.....	22
Table 6:	Total Arrivals by Country of Residence and Age Group.....	23
Table 7:	Total Arrivals by Nationality and Age Group.....	25
Table 8:	Total Arrivals by Nationality and Month.....	27
Table 9:	Total Arrivals by Country of Residence and Month.....	29
Table 10:	Total Arrivals by Border Post and Continent of Nationality.....	31
Table 11:	Total Arrivals by Border Post and Month of Arrival.....	32
Table 12:	Total Arrivals by Month of Arrival and Mode of Travel.....	33
Table 13:	Total Arrivals by Month and Quarter.....	33
Table 14:	Total Departures by Nationality and Sex.....	34
Table 15:	Total Departures by Country of Residence and Sex.....	36
Table 16:	Total Departures by Nationality and Age Group.....	37
Table 17:	Total Departures by Country of Residence and Age Group.....	39
Table 18:	Total Departures by Station, Mode of Travel and Month.....	41
Table 19:	Total Departures by Month and Mode of Travel.....	42

1.0 Introduction

The Tourism statistics report is an annual publication that depicts the statistics of non-citizens including temporary residents entering and leaving the country. The common terms used for these are, arrivals and departures. The comprehensive statistics compiled in this report includes arrivals by country of residence, nationality, purpose of entry, mode of travel used, point of entry and exit as well as age groupings and sex. The information contained in this report is derived from the Department of Immigration and Citizenship arrival/ departure forms, which are completed by non-citizens at points of entry and exit.

The Department of Immigration and Citizenship has automated the busiest border posts which handle high volumes of traffic and is therefore able to provide Statistics Botswana with electronic data. These borders account for over 90 percent of all travelers inbound and outbound.

Forms from manual borders are captured by Statistics Botswana and merged with those from automated borders before analysis is done. Botswana citizens are exempted from completing the immigration forms. As a result, figures on arrivals and departures contained in this publication cover only non-citizens, both visitors and temporary residents of Botswana. However, with the increasing demand for statistics on outbound travelers, particularly information on citizens, it will be necessary to find means of collecting and availing data on citizens as well in future.

The quality of statistics contained in this publication is highly dependent on the proper completion of the arrival/departure forms by all travelers.

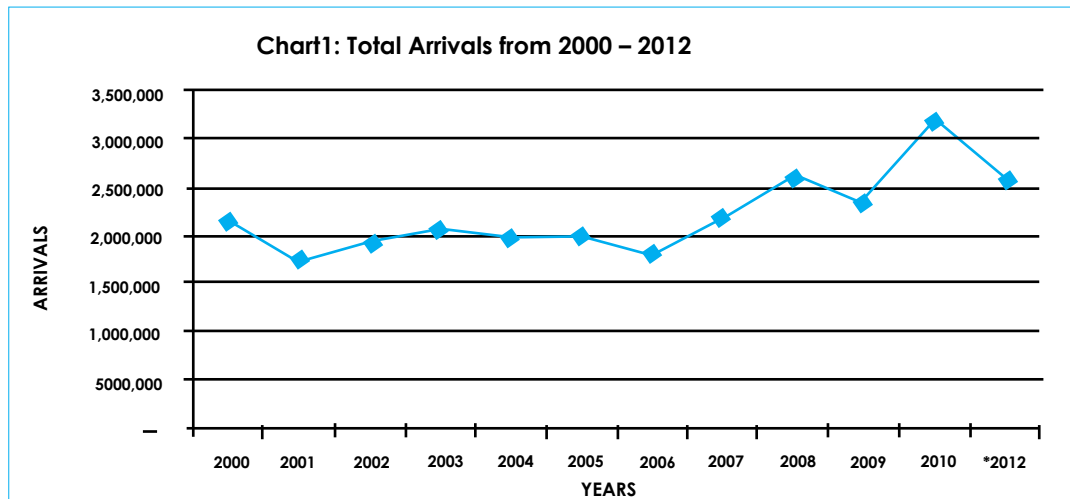
2.0 Arrangement of Report

The report is categorized into two portions. The first portion discusses arrivals while the second provides information on departures.

3.0 Total Arrivals

In 2012, a total of 2,612,555 arrivals into Botswana were recorded. Males constituted 59.8 percent (1, 561, 932) of total arrivals during the year (**Table 1**).

Chart 1 shows the trend of the arrivals from 2000-2012.



* The 2011 figures are currently not available

3.1 Arrivals by Nationality

Zimbabweans dominated in arrivals, having accounted for 42.9 percent (1,120,815) of the 2,612,555 arrivals shown by Table 1. This is followed by South Africans with 713,174 (27.3 percent) while Zambians represented 7.3 percent (191, 069) of 2012 total arrivals into the country.

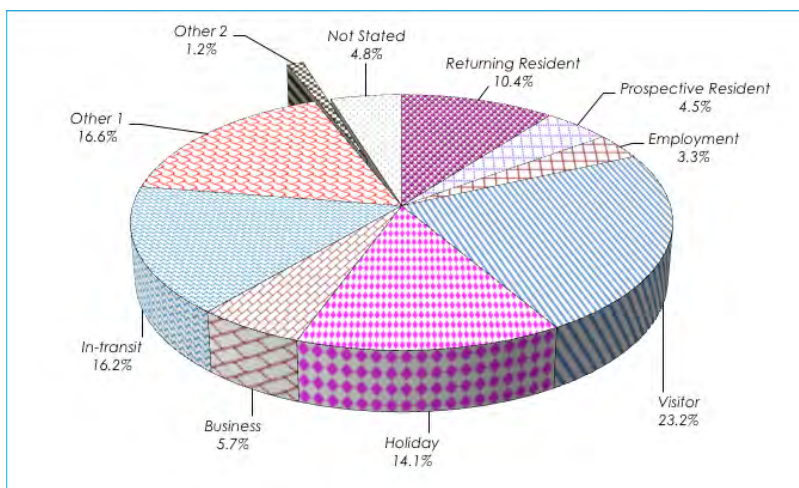
The African continent accounted for 86.4 percent (2, 256,264) of total arrivals during the year. Arrivals from Europe accounted for 7.3 percent (189, 445) while those from Asia represented 2.3 percent (59,745) of 2012 total arrivals.

3.2 Arrivals by Purpose of Entry

Table 3 shows that 23.2 percent (606,581) of arrivals into the country came for the purpose of "Visiting friends and relatives". This was followed by arrivals that were on "Transit", 16.2 percent (423,756). Arrivals for "Holiday" contributed 14.1 percent (367,427) of total arrivals in 2012 while 5.7 percent (149,158) came to do "Business". Other notable numbers recorded were non-citizens resident in the country (Returning Residents) with 10.4 percent (272,057).

The distribution by Purpose of Entry is illustrated by Chart 2. "Other1" consists mainly of arrivals for purposes of shopping, religious and medical reasons. These three are not specific in the form but fall under category "other- specify". "Other 2" comprises those arriving for purposes of "Seeking Employment", "Students" and "Diplomats".

Chart 2: Arrivals by Purpose of Entry - 2012 Percentage Distributions



Note:

Other 1 = Arrivals for Shopping, Religious & Medical purposes

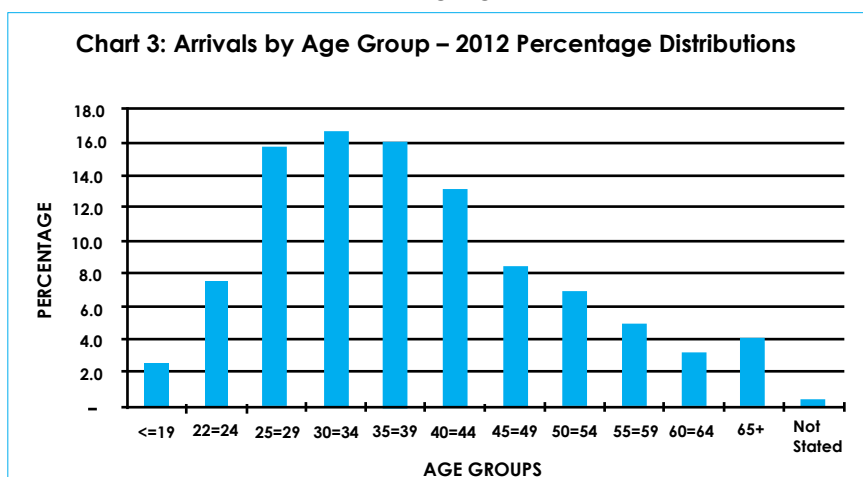
Other 2 = Arrivals for purposes of Seeking Employment, Students & Diplomats

3.3 Distribution of Arrivals by Age Group

Table 5 shows arrivals by age-group. The age-group 30-34 years contributed the most to arrivals at 16.6 percent (434,439), followed by 35-39 with 16.1 percent (420,198). The 25-29 and 40-44 groups follow with 15.8 percent (413,122) and 13.1 percent (342,947) respectively.

Table 5A displays Purpose of Entry as a Percentage of Age group and is based on Table 5. For most age-groups, visitors show percentage distributions in excess of 20 percent. Out of a total of 434,439 arrivals aged between 30 to 34 years, 28.1 percent came in for the purpose of visiting. Among the 35-39 year olds (420,198), 30.2 percent (126,851) came in as visitors while for the age-group 40-44 years (342,947), visitors contributed 26.9 percent (92,087). Other percentage distributions can be observed on Table 5A.

Chart 3, which is based on Table 5, shows arrivals by age-group.

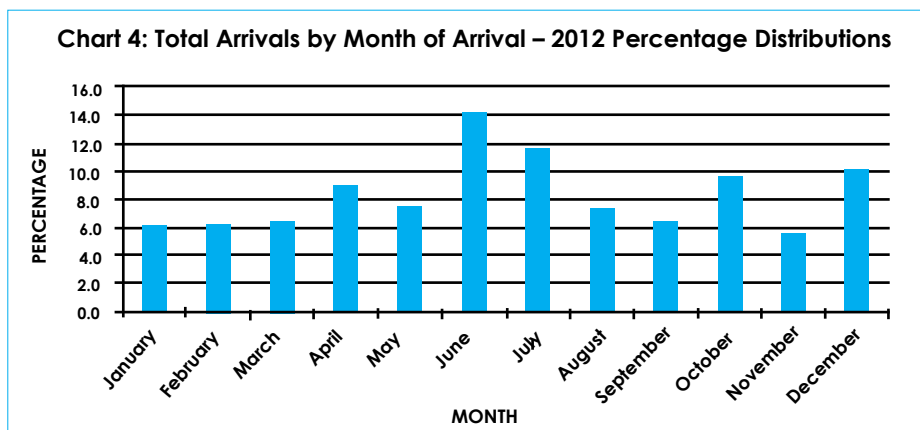


3.4 Arrivals by Border Post

Table 10 presents statistics on arrivals by Border Post. This table shows that the highest number of arrivals was through the Ramokgwebana Border Post, having recorded 752, 934 arrivals, representing 28.8 percent of total arrivals (2,612,555). This was followed by Tlokweng border post with 495,399 arrivals (19.0 percent). Kazungula Ferry and Martin's Drift recorded arrivals at 8.3 percent (217,704) and 7.2 percent (186, 833) respectively. The least busy points of entry are the small airports/airstrips usually accessed by small charter flights and private jets.

3.5 Month of Arrival

Most arrivals were recorded in June, 371,877 (14.2 percent), followed by July and December with 304,144 (11.6 percent) and 263,880 (10.1 percent) respectively as displayed in Table 11. The least number of arrivals, 146,568 was recorded during November 2012, representing 5.6 percent of total arrivals during the year. Chart 4, which is based on Table 11, presents 2012 percentage distributions for total arrivals by month of arrival.



3.6 Mode of Travel

As displayed in Table 12, the majority of travelers use road as a mode of travel. This is evidenced by 94.6 percent (2,470,724) of total arrivals having used road to reach the country. Air transport accounted for only 5.4 percent (141,520) of 2012 total arrivals. Other mode of travel comprises travel by rail and water.

4.0 Total Departures

Discussions on departures are based on Table 14 to Table 19. A total of 2,353,697 departures were recorded in 2012 as can be seen on Table 14. Males accounted for 1,393,828 (59.2 percent) of total departures, while females were 959, 880, representing 40.8 percent.

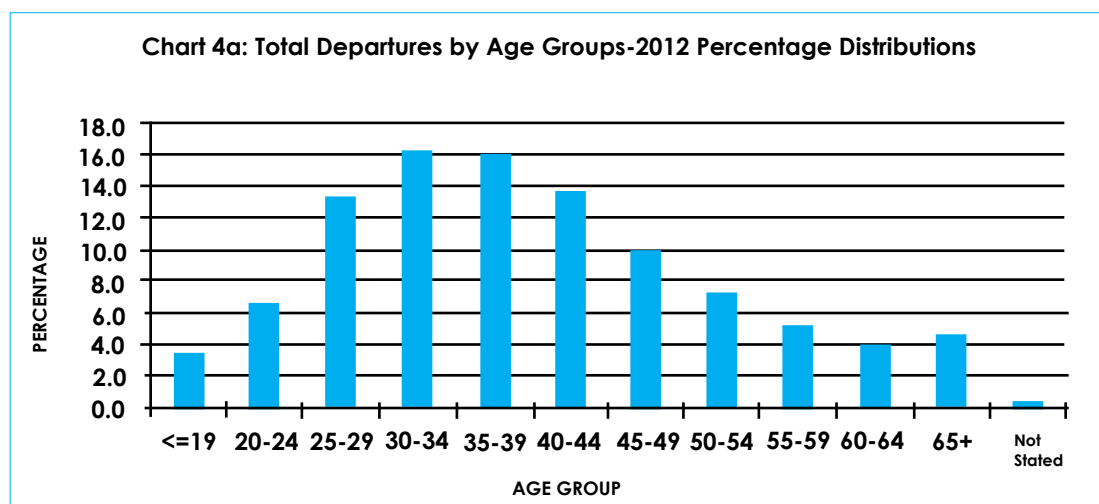
4.1 Departures by Country of Residence

Most people departing the country were residents of the SADC region as can be observed on Table 15. Zimbabwe alone accounted for 35.0 percent (823,392) of total departures during the year, followed by South Africa with 25.9 percent (608,793). Departures that resided in Zambia accounted for 7.2 percent (169,793) while those residing in Namibia represented 5.1 percent (118,985).

Outside Africa, only two countries accounted for departures representing over three percent each, these being the United Kingdom with 5.3 percent (123, 634) and Germany with 3.6 percent (84, 323) of all departures.

4.2 Departures by Age Group

Table 16 shows that the highest number of departures was recorded in the 30-34 age bracket, representing a total of 382, 979 (16.3 percent) followed by age group 35-39 with 16.1 percent (377, 915) and 40-44 with 13.7 percent (322, 692).



4.3 Departures by Month and Border Post

Table 18 shows that December recorded the highest number of departures, 256, 464 representing 10.9 percent of total departures during the year. This was followed by July with 222, 391 (9.4 percent) and April with 216, 182 (9.2 percent). The lowest number of departures was recorded during February, 156,864 representing 6.7 percent of total departures.

Most departures went through Ramokgwebana border post during 2012, representing 26.6 percent (627,087) of total departures as displayed in Table 18. Tlokweng border post was the next busiest border post having recorded 15.7 percent (370, 341). Martins Drift accounted for 9.0 percent (210, 808) of the total departures.

As can be seen on Table 19, most departures were by road, 94.1 percent (2,214,206), while air transport accounted for 5.1 percent (119, 742) of 2012 total departures.

Table 1: Arrivals by Nationality and Sex - 2012

Nationality	SEX		Total	
	Male	Female	Number	%
Africa				
Zimbabwe	581,719	539,097	1,120,816	42.9
South Africa	513,021	200,153	713,174	27.3
Zambia	119,202	71,868	191,070	7.3
Namibia	94,932	49,085	144,017	5.5
Malawi	14,943	8,221	23,164	0.9
Kenya	9,472	6,415	15,887	0.6
Lesotho	5,399	4,814	10,213	0.4
Mozambique	4,990	1,812	6,802	0.3
Swaziland	4,185	1,883	6,068	0.2
Tanzania	3,903	1,579	5,482	0.2
Nigeria	2,770	1,035	3,805	0.1
Uganda	2,367	919	3,286	0.1
DRC	1,742	800	2,542	0.1
Mauritius	1,373	626	1,999	0.1
Ghana	1,011	625	1,636	0.1
Angola	848	466	1,314	0.1
Ethiopia	866	357	1,223	0.0
Cameroon	372	227	599	0.0
Egypt	408	161	569	0.0
Sierra Leone	180	191	371	0.0
Eritrea	209	103	312	0.0
Libya	240	53	293	0.0
Madagascar	120	145	265	0.0
Seychelles	161	103	264	0.0
Sudan	170	62	232	0.0
Senegal	151	53	204	0.0
Tunisia	129	45	174	0.0
Algeria	69	85	154	0.0
Other Africa	252	79	331	0.0
Total	1,365,204	891,062	2,256,266	86.4

Table 1 Continued: Arrivals by Nationality and Sex - 2012

Nationality	SEX		Total	
	Male	Female	Number	%
Europe:				
United Kingdom	30,364	22,910	53,274	2.0
Germany	17,586	16,783	34,369	1.3
Netherlands	8,897	8,573	17,470	0.7
France	8,045	7,000	15,045	0.6
Italy	5,191	4,265	9,456	0.4
Switzerland	4,490	4,546	9,036	0.3
Spain	3,871	3,792	7,663	0.3
Belgium	4,021	3,607	7,628	0.3
Sweden	2,325	2,102	4,427	0.2
Denmark	2,258	2,089	4,347	0.2
Austria	1,913	1,954	3,867	0.1
Ireland	2,164	1,656	3,820	0.1
Portugal	1,996	1,139	3,135	0.1
Norway	1,534	1,400	2,934	0.1
Russia	1,450	1,355	2,805	0.1
Poland	1,245	1,034	2,279	0.1
Finland	981	1,101	2,082	0.1
Slovakia	556	298	854	0.0
Czech Republic	483	335	818	0.0
Bulgaria	430	354	784	0.0
Greece	444	330	774	0.0
Yugoslavia	322	197	519	0.0
Ukraine	272	222	494	0.0
Hungary	168	282	450	0.0
Croatia	227	131	358	0.0
Romania	140	106	246	0.0
Luxembourg	116	123	239	0.0
Other Europe	171	102	273	0.0
Total	101,660	87,786	189,446	7.3
America:				
United States of America	19,908	20,325	40,233	1.5
Canada	6,307	6,239	12,546	0.5
Brazil	1,462	1,124	2,586	0.1
Mexico	781	632	1,413	0.1
Argentina	630	712	1,342	0.1
Jamaica	387	360	747	0.0
Cuba	214	147	361	0.0
Colombia	167	191	358	0.0
Chile	198	155	353	0.0
Other America	170	69	239	0.0
Total	30,224	29,954	60,178	2.3

Table 1 Continued: Arrivals by Nationality and Sex - 2012

Nationality	SEX		Total	
	Male	Female	Number	%
Asia:				
India	13,127	6,722	19,849	0.8
China	7,424	3,259	10,683	0.4
Japan	3,852	4,594	8,446	0.3
Korea	1,968	1,939	3,907	0.1
Sri Lanka	2,014	1,282	3,296	0.1
Pakistan	2,213	1,080	3,293	0.1
Bangladesh	1,914	816	2,730	0.1
Israel	1,602	813	2,415	0.1
Singapore	525	421	946	0.0
Malaysia	382	297	679	0.0
Philippines	306	341	647	0.0
Cyprus	253	224	477	0.0
Lebanon	310	158	468	0.0
Taiwan	170	215	385	0.0
Thailand	162	188	350	0.0
Hong Kong	192	133	325	0.0
Indonesia	176	127	303	0.0
Turkey	184	105	289	0.0
Other Asia	167	88	255	0.0
Total	36,941	22,802	59,743	2.3
Oceania:				
Australia	7,296	7,880	15,176	0.6
New Zealand	2,759	2,235	4,994	0.2
Total	10,055	10,115	20,170	0.8
Not Known	17,849	8,903	26,752	1.0
Total	1,561,933	1,050,622	2,612,555	100.0

Note: All percentages less than 0.05 are presented as 0.0 % on the table

Table 2: Total Arrivals by Country of Residence and Sex - 2012

Country of Residence	SEX		Total	
	Male	Female	Number	%
Africa:				
Zimbabwe	456,233	500,062	956,295	36.6
South Africa	517,316	198,707	716,023	27.4
Botswana	193,265	93,852	287,117	11.0
Zambia	92,327	50,863	143,190	5.5
Namibia	83,283	38,038	121,321	4.6
Lesotho	3,018	2,434	5,452	0.2
Malawi	4,215	1,098	5,313	0.2
Swaziland	3,276	1,470	4,746	0.2
Mozambique	2,805	904	3,709	0.1
Kenya	2,100	931	3,031	0.1
Tanzania	2,310	667	2,977	0.1
Uganda	942	377	1,319	0.1
Angola	641	252	893	0.0
DRC	658	221	879	0.0
Nigeria	546	231	777	0.0
Mauritius	535	230	765	0.0
Ghana	265	116	381	0.0
Ethiopia	200	107	307	0.0
Egypt	185	48	233	0.0
Madagascar	87	71	158	0.0
Tunisia	110	33	143	0.0
Sierra Leone	95	38	133	0.0
Seychelles	94	32	126	0.0
Libya	100	8	108	0.0
Cameroon	59	23	82	0.0
Senegal	62	15	77	0.0
Other Africa	477	234	711	0.0
Total	1,365,204	891,062	2,256,266	86.4

Table 2 Continued: Total Arrivals by Country of Residence and Sex - 2012

Country of Residence	SEX		Total	
	Male	Female	Number	%
Europe:				
United Kingdom	28,031	22,642	50,673	1.9
Germany	21,822	19,955	41,777	1.6
Netherlands	9,272	9,012	18,284	0.7
France	8,160	6,327	14,487	0.6
Switzerland	5,011	4,950	9,961	0.4
Italy	4,804	3,678	8,482	0.3
Spain	3,741	3,560	7,301	0.3
Belgium	3,394	2,770	6,164	0.2
Sweden	2,702	2,427	5,129	0.2
Denmark	2,585	2,402	4,987	0.2
Austria	2,090	2,394	4,484	0.2
Norway	1,699	1,468	3,167	0.1
Russia	1,507	1,340	2,847	0.1
Ireland	1,406	938	2,344	0.1
Poland	972	865	1,837	0.1
Portugal	1,127	582	1,709	0.1
Finland	821	864	1,685	0.1
Czechoslovakia	595	313	908	0.0
Slovakia	618	268	886	0.0
Greece	344	228	572	0.0
Ukraine	301	183	484	0.0
Hungary	197	198	395	0.0
Bulgaria	135	183	318	0.0
Luxembourg	120	140	260	0.0
Other Europe	206	99	305	0.0
Total	101,660	87,786	189,446	7.3
America:				
United States of America	23,273	24,173	47,446	1.8
Canada	4,687	4,480	9,167	0.4
Mexico	649	353	1,002	0.0
Brazil	508	223	731	0.0
Argentina	275	308	583	0.0
Chile	139	85	224	0.0
Jamaica	149	37	186	0.0
Colombia	28	101	129	0.0
Belize	128	4	132	0.0
Other America	388	190	578	0.0
Total	30,224	29,954	60,178	2.3

Table 2 Continued: Total Arrivals by Country of Residence and Sex - 2012

Country of Residence	SEX		Total	
	Male	Female	Number	%
Asia:				
Japan	6,982	9,400	16,382	0.6
China	9,664	2,993	12,657	0.5
India	8,594	3,663	12,257	0.5
Korea	2,993	3,144	6,137	0.2
Israel	2,162	606	2,768	0.1
Singapore	1,074	595	1,669	0.1
Malaysia	706	329	1,035	0.0
Bangladesh	840	187	1,027	0.0
Pakistan	560	224	784	0.0
Sri Lanka	443	316	759	0.0
Hong Kong	437	176	613	0.0
Cyprus	355	92	447	0.0
Taiwan	223	208	431	0.0
Thailand	154	200	354	0.0
Philippines	234	88	322	0.0
Vietnam	287	22	309	0.0
Turkey	203	46	249	0.0
Other Asia	1,030	513	1,543	0.1
Total	36,941	22,802	59,743	2.3
Oceania:				
Australia	8,447	8,657	17,104	0.7
New Zealand	1,608	1,458	3,066	0.1
Total	10,055	10,115	20,170	0.8
Not Known	17,849	8,903	26,752	1.0
Total	1,561,933	1,050,622	2,612,555	100.0

Table 3: Total Arrivals by Nationality and Purpose of Entry - 2012

Nationality	PURPOSE OF ENTRY												Total
	Returning Resident	Prospective Resident	Seeking Employment	Employment	Visitor	Holiday	Business	In-transit	Diplomat	Student	Other	Not Stated	
Africa:													
Zimbabwe	136,896	61,828	4,388	19,628	396,283	60,581	56,018	89,477	2,063	1,066	241,633	50,955	1,120,816
South Africa	53,581	27,836	4,595	20,044	145,305	116,040	62,045	154,578	1,791	792	91,382	35,185	713,174
Zambia	11,981	7,537	1,385	1,223	16,201	33,743	9,739	59,597	843	262	40,511	8,048	191,070
Namibia	2,047	2,116	1,113	774	15,553	4,838	2,624	88,583	273	459	24,630	1,007	144,017
Malawi	4,430	920	128	677	5,932	1,777	1,246	3,257	166	102	3,319	1,210	23,164
Kenya	3,087	445	118	311	1,063	814	365	756	45	109	789	7,985	15,887
Lesotho	1,003	457	148	422	2,966	1,284	834	388	171	251	1,730	559	10,213
Mozambique	656	247	68	136	1,297	753	632	1,533	102	26	1,057	295	6,802
Swaziland	521	233	69	190	1,013	790	713	1,293	146	171	713	216	6,068
Tanzania	1,567	271	52	53	783	492	200	948	77	69	630	340	5,482
Nigeria	1,934	97	-	35	327	168	124	9	71	35	769	236	3,805
Uganda	871	259	54	63	712	323	162	233	9	36	329	235	3,286
DRC	1,019	46	-	111	258	249	101	249	92	18	312	87	2,542
Mauritius	627	38	-	48	194	334	202	19	105	19	241	172	1,999
Ghana	891	110	30	40	113	79	31	10	20	30	200	82	1,636
Angola	105	31	-	31	126	236	73	168	105	31	303	105	1,314
Ethiopia	642	86	-	32	98	86	11	11	-	11	182	64	1,223
Other Africa	952	764	1,098	193	142	127	61	174	-	19	219	19	3,768
Total	222,810	103,321	13,246	44,011	588,366	222,714	135,181	401,283	6,079	3,506	408,949	106,800	2,256,266
Europe:													
United Kingdom	10,372	1,081	451	4,126	4,275	22,089	3,013	3,343	141	118	2,400	1,865	53,274
Germany	1,468	320	328	5,920	756	17,610	414	4,825	32	92	1,456	1,148	34,369
Netherlands	617	237	109	2,798	497	10,251	292	1,113	58	35	991	472	17,470
France	817	125	83	1,996	563	7,678	895	801	114	38	838	1,097	15,045
Italy	621	152	90	1,527	293	5,114	270	575	13	13	557	231	9,456
Switzerland	199	82	118	1,327	173	5,260	251	947	-	13	346	320	9,036
Spain	43	14	14	758	217	5,203	217	678	29	-	382	108	7,663
Belgium	512	105	51	1,220	410	3,691	492	511	116	-	342	178	7,628
Sweden	467	104	113	593	206	1,763	161	570	31	62	167	190	4,427
Denmark	223	44	103	510	166	1,664	124	1,087	-	-	168	258	4,347
Austria	107	11	102	502	79	1,876	117	661	-	11	195	206	3,867
Ireland	858	88	75	285	285	1,363	175	286	11	21	182	191	3,820
Portugal	509	46	34	174	300	955	232	401	-	-	369	115	3,135
Norway	141	73	94	333	155	1,476	118	224	-	12	155	153	2,934
Russia	109	54	25	292	179	1,178	262	207	84	-	207	208	2,805
Poland	165	30	27	292	175	950	56	301	-	-	175	108	2,279
Finland	186	29	-	407	67	772	93	400	-	43	57	28	2,082
Other Europe	1,518	1,139	320	595	349	278	1,262	274	27	17	18	12	5,809
Total	18,932	3,734	2,137	23,655	9,145	89,171	8,444	17,204	656	475	9,005	6,888	189,446

Table 3 Continued: Total Arrivals by Nationality and Purpose of Entry - 2012

Nationality	PURPOSE OF ENTRY												Total
	Returning Resident	Prospective Resident	Seeking Employment	Employment	Visitor	Holiday	Business	In-transit	Diplomat	Student	Other	Not Stated	
America:													
United States of America	3,069	1,296	543	7,582	1,740	19,376	1,182	1,563	259	675	1,956	992	40,233
Canada	1,705	175	171	2,132	665	5,477	478	515	96	119	521	492	12,546
Brazil	799	472	154	518	103	150	131	81	69	61	33	15	2,586
Mexico	108	46	19	266	61	681	42	55	9	24	67	35	1,413
Argentina	182	19	18	228	71	586	51	55	10	13	56	53	1,342
Other America	635	375	124	412	83	119	103	63	53	48	26	17	2,053
Total	6,498	2,383	1,029	11,138	2,723	26,389	1,987	2,332	496	940	2,659	1,604	60,178
Asia:													
India	9,184	505	67	1,095	1,921	1,517	377	129	85	26	3,006	1,937	19,849
China	2,011	161	66	751	1,248	2,069	880	19	47	75	1,732	1,624	10,683
Japan	42	21	113	1,006	186	5,725	231	72	62	-	372	616	8,446
Korea	204	34	11	329	386	1,995	196	148	-	11	274	319	3,907
Sri Lanka	1,866	47	-	66	251	219	87	-	-	-	574	186	3,296
Pakistan	1,355	101	23	57	385	104	67	22	22	-	731	426	3,293
Bangladesh	851	12	-	37	521	121	18	-	12	-	836	322	2,730
Israel	386	27	27	285	82	997	119	48	-	-	322	122	2,415
Other Asia	2,820	828	1	139	3	464	550	1	-	-	151	167	5,126
Total	18,719	1,736	308	3,765	4,983	13,211	2,525	439	228	112	7,998	5,719	59,743
Oceania:													
Australia	870	251	173	2,604	698	8,204	431	1,028	20	60	426	411	15,176
New Zealand	441	108	40	810	235	2,314	184	368	-	-	343	151	4,994
Total	1,311	359	213	3,414	933	10,518	615	1,396	20	60	769	562	20,170
Not Known	3,787	5,520	279	1,474	431	5,424	406	1,102	244	663	4,110	3,312	26,752
Total	272,057	117,053	17,212	87,457	606,581	367,427	149,158	423,756	7,723	5,756	433,490	124,885	2,612,555
% Distribution	10.4	4.5	0.7	3.3	23.2	14.1	5.7	16.2	0.3	0.2	16.6	4.8	100.0

Table 4: Total Arrivals by Country of Residence and Purpose of Entry - 2012

Country of Residence	PURPOSE OF ENTRY												Total
	Returning Resident	Prospective Resident	Seeking Employment	Employment	Visitor	Holiday	Business	In-transit	Diplomat	Student	Other	Not Stated	
Africa:													
Zimbabwe	-	57,132	4,327	9,074	396,799	53,167	51,613	84,376	1,823	1,107	241,528	55,349	956,295
South Africa	-	32,441	6,044	13,812	153,275	103,371	67,083	173,796	1,911	966	125,949	37,375	716,023
Botswana	272,057	-	-	12,489	-	-	-	-	1,487	1,084	-	-	287,117
Zambia	-	8,272	1,134	986	12,041	28,412	7,803	50,744	509	139	27,461	5,689	143,190
Namibia	-	2,478	1,004	700	12,668	4,688	2,206	81,072	200	293	8,979	7,033	121,321
Lesotho	-	512	79	204	1,852	875	497	334	36	63	743	257	5,452
Malawi	-	506	39	117	1,611	626	376	1,129	36	21	647	205	5,313
Swaziland	-	334	55	132	804	750	588	1,363	36	77	501	106	4,746
Mozambique	-	191	55	124	868	590	363	849	44	22	431	172	3,709
Kenya	-	421	70	176	604	583	311	494	22	28	245	77	3,031
Tanzania	-	328	63	30	499	439	185	939	36	35	297	126	2,977
Uganda	-	161	47	22	429	180	93	171	-	28	108	80	1,319
Angola	-	31	-	37	56	234	69	155	58	14	175	64	893
DRC	-	84	-	58	124	125	84	205	58	14	108	19	879
Nigeria	-	161	8	29	123	94	77	8	29	21	153	74	777
Mauritius	-	54	-	29	85	204	170	10	44	14	123	32	765
Ghana	-	63	16	29	55	70	31	-	15	-	59	43	381
Ethiopia	-	69	-	22	54	55	31	-	22	7	31	16	307
Egypt	-	16	-	7	32	31	38	8	22	-	15	64	233
Madagascar	-	-	8	15	-	23	-	-	7	-	84	21	158
Tunisia	-	-	-	-	8	55	15	-	7	7	30	21	143
Sierra Leone	-	8	-	-	31	23	8	8	-	35	10	10	133
Seychelles	-	-	8	1	-	40	1	-	15	-	60	1	126
Libya	-	-	-	-	15	31	15	8	7	-	16	16	108
Cameroon	-	-	-	-	31	-	-	-	-	-	38	13	82
Senegal	-	-	-	-	15	23	31	-	-	-	-	8	77
Other Africa	-	61	8	7	78	149	48	73	23	35	131	98	711
Total	272,057	103,323	12,965	38,100	582,157	194,838	131,736	395,742	6,447	4,010	407,922	106,969	2,256,266

Table 4 Continued: Total Arrivals by Country of Residence and Purpose of Entry - 2012

Country of Residence	PURPOSE OF ENTRY												Total
	Returning Resident	Prospective Resident	Seeking Employment	Employment	Visitor	Holiday	Business	In-transit	Diplomat	Student	Other	Not Stated	
Europe:													
United Kingdom	-	2,038	522	5,112	5,657	26,795	3,866	3,060	36	167	1,832	1,588	50,673
Germany	-	524	501	7,160	828	21,996	763	6,375	73	106	2,001	1,450	41,777
Netherlands	-	363	144	3,044	608	10,809	350	1,082	37	-	1,328	519	18,284
France	-	128	67	1,956	467	7,542	1,051	871	111	30	997	1,267	14,487
Switzerland	-	84	133	1,481	188	5,598	313	1,233	-	15	472	444	9,961
Italy	-	136	142	1,506	195	4,564	434	574	36	-	612	283	8,482
Spain	-	-	16	679	227	4,793	246	694	37	-	467	142	7,301
Belgium	-	166	68	1,168	258	3,153	384	436	109	-	267	155	6,164
Sweden	-	108	167	702	250	2,109	263	886	71	88	208	277	5,129
Denmark	-	70	166	603	236	1,859	119	1,400	-	15	210	309	4,987
Austria	-	40	141	577	98	2,077	80	871	-	15	289	296	4,484
Norway	-	83	123	350	241	1,546	181	271	-	-	190	182	3,167
Russia	-	44	30	298	95	1,157	386	154	199	-	267	217	2,847
Ireland	-	108	62	213	213	1,175	121	179	-	30	155	88	2,344
Poland	-	29	30	252	189	784	80	245	-	-	113	115	1,837
Portugal	-	50	14	200	104	515	283	210	-	-	285	48	1,709
Finland	-	43	-	407	59	617	110	331	-	45	40	33	1,685
Czechoslovakia	-	15	-	122	5	599	42	33	-	-	40	52	908
Slovakia	-	40	-	192	42	366	55	59	-	-	115	17	886
Greece	-	-	-	53	94	228	115	15	-	-	36	31	572
Ukraine	-	-	19	20	-	292	24	39	-	-	50	40	484
Hungary	-	-	15	17	-	239	20	32	-	-	39	33	395
Bulgaria	-	40	-	56	48	120	-	-	-	15	39	-	318
Luxembourg	-	-	-	82	16	79	-	32	-	-	18	33	260
Other Europe	-	28	8	45	8	144	12	17	-	-	41	2	305
Total	-	4,137	2,368	26,295	10,126	99,156	9,298	19,099	709	526	10,111	7,621	189,446
America:													
United States of America	-	1,866	715	9,356	2,703	24,294	1,380	1,882	213	726	2,177	2,134	47,446
Canada	-	127	135	1,756	549	4,813	372	479	61	111	351	413	9,167
Mexico	-	12	-	123	5	758	9	49	-	-	12	34	1,002
Brazil	-	86	-	54	76	377	-	25	25	12	50	26	731
Argentina	-	12	12	29	86	357	-	61	-	-	26	-	583
Chile	-	12	-	74	-	136	2	-	-	-	-	-	224
Jamaica	-	12	-	25	62	74	-	-	-	-	-	13	186
Colombia	-	-	-	-	-	103	-	-	-	-	26	-	129
Belize	-	4	-	62	-	1	25	37	-	-	-	3	132
Other America	-	37	14	163	74	197	25	15	-	-	30	23	573
Total	-	2,168	876	11,642	3,555	31,110	1,813	2,548	299	849	2,672	2,646	60,178

Table 4 Continued: Total Arrivals by Country of Residence and Purpose of Entry - 2012

Country of Residence	PURPOSE OF ENTRY												Total
	Returning Resident	Prospective Resident	Seeking Employment	Employment	Visitor	Holiday	Business	In-transit	Diplomat	Student	Other	Not Stated	
Asia:													
Japan	-	44	242	1,905	308	11,434	334	110	22	-	703	1,280	16,382
China	-	619	90	1,212	1,943	4,120	1,710	44	66	66	1,465	1,322	12,657
India	-	2,577	112	1,165	2,674	2,636	553	187	68	90	1,481	714	12,257
Korea	-	88	22	484	572	3,647	334	286	-	22	154	528	6,137
Israel	-	24	44	364	220	1,562	154	77	-	-	230	93	2,768
Singapore	-	26	-	181	48	1,081	110	134	-	-	67	22	1,669
Malaysia	-	44	-	110	88	573	66	22	-	44	22	66	1,035
Bangladesh	-	22	-	44	309	88	11	-	-	-	463	90	1,027
Pakistan	-	198	-	24	178	93	66	22	-	-	91	112	784
Sri Lanka	-	205	-	66	134	244	44	-	-	-	22	44	759
Hong Kong	-	44	-	134	132	267	-	26	-	-	3	7	613
Cyprus	-	-	-	-	156	176	-	88	-	-	27	-	447
Taiwan	-	-	-	2	-	334	-	-	-	-	66	29	431
Thailand	-	22	-	44	110	112	22	-	-	-	44	-	354
Philippines	-	22	-	66	110	77	2	22	-	-	23	-	322
Vietnam	-	-	-	132	-	110	44	-	22	-	1	-	309
Turkey	-	-	-	42	2	201	-	4	-	-	-	-	249
Other Asia	-	61	-	287	182	507	61	5	-	-	440	-	1,545
Total	-	3,996	510	6,262	7,166	27,262	3,511	1,027	178	222	5,302	4,307	59,743
Oceania:													
Australia	-	529	213	3,207	805	9,728	463	1,161	12	70	473	443	17,104
New Zealand	-	143	36	581	152	1,416	117	260	-	-	349	12	3,066
Total	-	672	249	3,788	957	11,144	580	1,421	12	70	822	455	20,170
Not Known	-	2,757	244	1,370	2,620	3,917	2,220	3,919	78	79	6,661	2,887	26,752
Total	272,057	117,053	17,212	87,457	606,581	367,427	149,158	423,756	7,723	5,756	433,490	124,885	2,612,555

Table 5: Total Arrivals by Purpose of Entry and Age Group - 2012

Purpose of Entry	AGE GROUP											Not Stated	Total
	<=19	20-24	25-29	30-34	35-39	40-44	45-49	50-54	55-59	60-64	65+		
Returning Resident	7,329	23,425	40,980	33,560	20,885	32,506	21,626	24,069	14,194	44,279	8,317	887	272,057
Prospective Resident	4,055	9,069	16,484	9,057	18,182	22,591	7,294	7,194	5,437	11,663	5,556	471	117,053
Seeking Employment	489	1,070	1,960	2,219	2,941	4,474	849	1,143	742	435	836	54	17,212
Employment	2,508	6,172	10,157	11,722	17,679	17,791	4,511	5,671	4,144	1,992	4,843	267	87,457
Visitor	20,278	48,118	70,704	121,939	126,851	92,087	33,803	18,307	27,588	8,269	37,550	1,087	606,581
Holiday	8,230	27,141	41,411	85,263	65,760	54,526	23,701	25,470	16,620	5,112	12,506	1,687	367,427
Business	3,347	12,608	22,285	23,337	29,818	14,761	12,178	11,588	10,961	1,880	5,625	770	149,158
In-transit	8,809	33,803	71,042	66,010	80,567	41,338	39,896	31,924	26,352	5,720	16,111	2,184	423,756
Diplomat	148	514	1,376	1,141	1,507	640	837	599	590	87	246	38	7,723
Student	101	371	1,312	759	820	524	827	546	241	50	183	22	5,756
Other	9,499	30,201	118,919	42,504	40,212	43,353	69,152	48,201	14,919	2,723	11,573	2,234	433,490
Not Stated	3,046	8,479	16,492	36,928	14,976	18,356	5,262	8,056	8,145	2,378	2,222	545	124,885
Total	67,839	200,971	413,122	434,439	420,198	342,947	219,936	182,768	129,933	84,588	105,568	10,246	2,612,555
% Distribution	2.6	7.7	15.8	16.6	16.1	13.1	8.4	7.0	5.0	3.2	4.0	0.4	100.0

Table 5A: Purpose of Entry as a Percentage of Age Group– 2012

Purpose of Entry	AGE GROUP											Not Stated
	<=19	20-24	25-29	30-34	35-39	40-44	45-49	50-54	55-59	60-64	65+	
Returning Resident	10.8	11.7	9.9	7.7	5.0	9.5	9.8	13.2	10.9	52.3	7.9	8.7
Prospective Resident	6.0	4.5	4.0	2.1	4.3	6.6	3.3	3.9	4.2	13.8	5.3	4.6
Seeking Employment	0.7	0.5	0.5	0.5	0.7	1.3	0.4	0.6	0.6	0.5	0.8	0.5
Employment	3.7	3.1	2.5	2.7	4.2	5.2	2.1	3.1	3.2	2.4	4.6	2.6
Visitor	29.9	23.9	17.1	28.1	30.2	26.9	15.4	10.0	21.2	9.8	35.6	10.6
Holiday	12.1	13.5	10.0	19.6	15.6	15.9	10.8	13.9	12.8	6.0	11.8	16.5
Business	4.9	6.3	5.4	5.4	7.1	4.3	5.5	6.3	8.4	2.2	5.3	7.5
In-transit	13.0	16.8	17.2	15.2	19.2	12.1	18.1	17.5	20.3	6.8	15.3	21.3
Diplomat	0.2	0.3	0.3	0.3	0.4	0.2	0.4	0.3	0.5	0.1	0.2	0.4
Student	0.1	0.2	0.3	0.2	0.2	0.2	0.4	0.3	0.2	0.1	0.2	0.2
Other	14.0	15.0	28.8	9.8	9.6	12.6	31.4	26.4	11.5	3.2	11.0	21.8
Not Stated	4.5	4.2	4.0	8.5	3.6	5.4	2.4	4.4	6.3	2.8	2.1	5.3
Total	100.0	100.0	100.0	100.0	100.0	100.0	100.0	100.0	100.0	100.0	100.0	100.0

Table 6: Total Arrivals by Country of Residence and Age Group - 2012

Country of Residence	AGE GROUP											Not Stated	Total
	<=19	20-24	25-29	30-34	35-39	40-44	45-49	50-54	55-59	60-64	65+		
Africa:													
Zimbabwe	15,757	90,815	221,990	203,967	187,998	122,434	43,830	31,436	18,273	7,853	8,817	3,125	956,295
South Africa	23,115	45,825	77,737	88,743	96,016	99,043	85,092	72,542	53,571	32,636	38,493	3,210	716,023
Botswana	7,974	11,758	29,596	45,188	51,794	48,820	33,054	26,078	16,832	8,383	6,580	1,060	287,117
Zambia	2,833	14,632	27,254	31,958	26,709	17,134	9,255	6,572	2,860	1,562	1,608	813	143,190
Namibia	5,400	12,829	18,337	16,899	16,051	17,676	11,556	9,398	5,525	3,045	4,021	584	121,321
Lesotho	292	617	807	917	791	539	487	494	224	106	150	28	5,452
Malawi	93	531	794	890	869	716	552	384	224	135	99	26	5,313
Swaziland	184	253	869	934	790	598	395	266	201	49	113	94	4,746
Mozambique	77	246	485	830	594	577	384	272	136	57	42	9	3,709
Kenya	147	144	415	583	377	387	451	196	114	92	115	10	3,031
Tanzania	88	310	540	518	568	269	194	307	113	14	38	18	2,977
Uganda	15	150	183	393	154	176	70	75	37	22	35	9	1,319
Angola	15	48	110	117	100	123	115	144	82	23	7	9	893
DRC	15	80	71	124	85	93	161	121	55	42	14	18	879
Nigeria	8	32	97	134	131	116	94	68	40	21	36	-	777
Other Africa	94	336	353	375	450	384	347	298	443	74	48	22	3,224
Total	56,107	178,606	379,638	392,570	383,477	309,085	186,037	148,651	98,730	54,114	60,216	9,035	2,256,266
America:													
United States of America	1,667	4,241	4,531	5,215	3,277	3,245	3,477	3,701	4,246	4,567	9,103	176	47,446
Canada	251	454	593	1,006	607	792	661	747	791	1,074	2,180	11	9,167
Other America	68	84	207	628	461	401	237	309	314	359	459	38	3,565
Total	1,986	4,779	5,331	6,849	4,345	4,438	4,375	4,757	5,351	6,000	11,742	225	60,178

Table 6 Continued: Total Arrivals by Country of Residence and Age Group - 2012

Country of Residence	AGE GROUP											Not Stated	Total
	<=19	20-24	25-29	30-34	35-39	40-44	45-49	50-54	55-59	60-64	65+		
Europe:													
United Kingdom	2,050	886	3,486	7,453	6,333	6,365	6,635	6,239	5,162	2,811	2,975	278	50,673
Germany	2,192	2,510	3,956	3,178	3,460	4,233	4,022	5,565	4,441	3,463	4,683	74	41,777
Netherlands	657	867	1,465	1,550	652	1,001	1,167	1,955	1,856	2,749	4,365	-	18,284
France	268	1,157	1,004	616	422	813	629	1,297	1,230	2,757	4,267	27	14,487
Switzerland	354	413	618	717	317	581	1,144	980	1,429	1,227	2,179	2	9,961
Italy	302	1,469	927	796	412	445	714	612	945	564	1,296	-	8,482
Spain	189	408	610	832	983	966	975	763	609	459	416	91	7,301
Belgium	451	438	1,243	794	529	407	405	269	333	700	568	27	6,164
Sweden	122	334	216	418	649	708	319	1,000	752	293	318	-	5,129
Denmark	120	264	661	423	221	466	654	479	381	499	819	-	4,987
Austria	106	225	282	343	227	309	374	653	358	698	909	-	4,484
Norway	43	163	183	222	251	290	430	373	420	385	379	28	3,167
Russia	54	81	180	221	178	138	86	101	192	540	1,071	5	2,847
Ireland	61	218	278	248	372	406	437	129	132	40	17	6	2,344
Poland	38	110	214	224	221	209	167	128	176	159	182	9	1,837
Portugal	45	74	142	112	76	132	156	178	246	151	397	-	1,709
Finland	29	109	137	147	62	112	278	213	215	175	199	9	1,685
Other Europe	-	213	257	256	297	300	497	351	368	689	755	145	4,128
Total	7,081	9,939	15,859	18,550	15,662	17,881	19,089	21,285	19,245	18,359	25,795	701	189,446
Asia:													
Japan	303	1,129	1,636	3,054	2,284	1,838	1,294	906	1,016	907	1,986	29	16,382
China	291	730	1,789	1,534	2,009	1,555	1,235	859	893	784	978	-	12,657
India	443	649	1,092	1,630	2,307	1,563	1,174	890	836	772	775	126	12,257
Korea	195	295	640	1,242	988	759	582	372	322	287	452	3	6,137
Israel	36	116	204	430	481	414	351	207	164	136	226	3	2,768
Other Asia	276	565	1,157	1,560	1,553	1,128	960	723	639	507	450	24	9,542
Total	1,544	3,484	6,518	9,450	9,622	7,257	5,596	3,957	3,870	3,393	4,867	185	59,743
Oceania:													
Australia	521	844	2,028	2,296	2,122	1,189	1,327	1,529	1,645	1,495	2,068	40	17,104
New Zealand	193	232	227	339	318	153	223	223	308	388	450	12	3,066
Total	714	1,076	2,255	2,635	2,440	1,342	1,550	1,752	1,953	1,883	2,518	52	20,170
Not Known	407	3,087	3,521	4,385	4,652	2,944	3,289	2,366	784	839	430	48	26,752
Total	67,839	200,971	413,122	434,439	420,198	342,947	219,936	182,768	129,933	84,588	105,568	10,246	2,612,555

Table 7: Total Arrivals by Nationality and Age Group

Nationality	AGE GROUP											Not Stated	Total
	<=19	20-24	25-29	30-34	35-39	40-44	45-49	50-54	55-59	60-64	65+		
Africa:													
Zimbabwe	19,315	97,690	241,562	237,608	210,880	144,308	63,506	47,575	28,663	13,121	12,254	4,334	1,120,816
South Africa	22,909	40,149	73,813	84,975	102,706	105,632	83,946	70,807	54,106	32,596	38,867	2,668	713,174
Zambia	4,437	19,154	35,541	36,834	32,826	26,869	14,626	10,705	4,672	2,422	2,051	933	191,070
Namibia	6,738	15,305	18,123	18,447	22,349	20,233	14,352	12,038	6,804	3,828	5,166	634	144,017
Malawi	358	1,798	3,394	3,725	4,290	3,100	2,567	2,012	938	467	449	66	23,164
Kenya	794	1,139	1,522	2,447	2,651	2,630	2,380	1,099	495	260	367	103	15,887
Lesotho	400	992	1,604	1,709	1,482	1,235	916	859	562	207	212	35	10,213
Mozambique	154	401	885	1,390	1,108	1,100	608	532	300	171	128	25	6,802
Swaziland	190	385	1,056	1,254	1,011	686	551	385	232	60	172	86	6,068
Tanzania	161	596	663	820	856	590	540	607	385	165	82	17	5,482
Nigeria	159	159	264	565	716	574	454	485	224	134	62	9	3,805
Uganda	54	197	317	795	530	555	224	260	171	93	64	26	3,286
DRC	60	166	171	478	515	369	351	171	188	37	19	17	2,542
Mauritius	96	88	177	305	163	284	301	240	307	19	19	-	1,999
Ghana	10	89	130	229	143	114	186	263	162	264	31	15	1,636
Angola	63	84	126	150	127	251	135	189	105	21	53	10	1,314
Ethiopia	32	11	64	224	506	139	85	43	54	43	22	-	1,223
Other Africa	177	203	226	615	618	416	309	381	362	206	198	57	3,768
Total	56,107	178,606	379,638	392,570	383,477	309,085	186,037	148,651	98,730	54,114	60,216	9,035	2,256,266
America:													
United States of America	1,222	3,470	3,155	4,981	2,560	2,600	2,473	2,881	3,320	4,041	9,306	224	40,233
Canada	561	891	1,461	932	877	1,060	1,148	1,118	1,314	1,371	1,812	1	12,546
Other America	203	418	715	936	908	778	754	758	717	588	624	-	7,399
Total	1,986	4,779	5,331	6,849	4,345	4,438	4,375	4,757	5,351	6,000	11,742	225	60,178

Table 7 Continued: Total Arrivals by Nationality and Age Group

Nationality	AGE GROUP											Not Stated	Total
	<=19	20-24	25-29	30-34	35-39	40-44	45-49	50-54	55-59	60-64	65+		
Europe:													
United Kingdom	2,375	2,618	3,743	4,175	3,621	4,699	5,201	6,274	5,796	6,076	8,536	160	53,274
Germany	990	994	2,154	3,691	2,448	3,261	4,083	3,582	3,468	3,283	6,327	88	34,369
Netherlands	839	1,434	1,744	1,449	1,209	1,264	1,663	1,993	1,796	1,950	1,951	177	17,469
France	722	963	1,733	1,523	1,412	1,295	1,626	1,373	1,666	1,052	1,641	39	15,045
Italy	197	206	660	1,377	1,157	1,116	1,051	1,051	997	687	892	65	9,456
Switzerland	361	339	649	767	684	896	971	893	1,099	928	1,444	5	9,036
Spain	263	188	702	1,271	1,065	970	801	956	684	365	340	58	7,663
Belgium	384	510	807	561	642	809	713	1,063	881	630	609	19	7,628
Sweden	155	230	451	411	254	401	221	538	415	584	742	25	4,427
Denmark	126	363	315	253	224	305	211	410	389	687	1,054	10	4,347
Austria	133	196	291	367	176	265	383	473	418	526	638	1	3,867
Ireland	172	151	509	325	232	288	574	498	234	447	378	12	3,820
Portugal	35	126	221	305	210	358	357	590	321	262	350	-	3,135
Norway	95	613	367	251	155	132	249	226	259	268	319	-	2,934
Russia	63	150	269	312	439	454	317	289	191	179	100	42	2,805
Poland	42	137	149	235	437	290	145	420	227	92	105	-	2,279
Finland	57	138	141	225	320	174	198	178	150	232	269	-	2,082
Other Europe	72	583	954	1,052	977	904	325	478	254	111	100	-	5,810
Total	7,081	9,939	15,859	18,550	15,662	17,881	19,089	21,285	19,245	18,359	25,795	701	189,446
Asia:													
India	590	1,054	2,445	3,763	3,726	2,578	1,763	1,056	1,151	734	922	67	19,849
China	234	1,009	1,253	1,700	2,344	1,510	1,158	653	536	169	76	41	10,683
Japan	206	287	674	827	720	645	251	371	546	1,393	2,502	24	8,446
Korea	113	216	205	408	320	378	511	498	331	296	620	11	3,907
Sri Lanka	97	133	296	577	434	346	456	389	293	163	109	3	3,296
Pakistan	89	180	328	652	582	562	471	145	94	93	80	17	3,293
Bangladesh	55	171	585	649	280	437	188	152	109	25	79	-	2,730
Israel	30	154	266	230	552	149	251	173	259	190	148	13	2,415
Other Asia	130	280	466	644	664	652	547	520	551	330	331	9	5,124
Total	1,544	3,484	6,518	9,450	9,622	7,257	5,596	3,957	3,870	3,393	4,867	185	59,743
Oceania:													
Australia	479	760	1,860	1,944	1,653	1,016	1,213	1,317	1,582	1,393	1,919	40	15,176
New Zealand	235	316	395	691	787	326	337	435	371	490	599	12	4,994
Total	714	1,076	2,255	2,635	2,440	1,342	1,550	1,752	1,953	1,883	2,518	52	20,170
Not Known	407	3,087	3,521	4,385	4,652	2,944	3,289	2,366	784	839	430	48	26,752
Total	67,839	200,971	413,122	434,439	420,198	342,947	219,936	182,768	129,933	84,588	105,568	10,246	2,612,555

Table 8: Total Arrivals by Nationality and Month of Arrival – 2012

Nationality	MONTH												Total
	Jan	Feb	Mar	Apr	May	Jun	Jul	Aug	Sep	Oct	Nov	Dec	
Africa:													
Zimbabwe	66,206	43,136	66,971	89,650	59,122	210,881	165,276	73,839	59,955	112,621	52,189	120,970	1,120,816
South Africa	47,856	48,134	47,557	65,920	61,729	72,313	72,507	58,035	55,038	60,210	45,587	78,288	713,174
Zambia	13,586	32,805	14,616	25,070	19,260	24,193	5,265	3,582	3,560	19,368	14,334	15,431	191,070
Namibia	9,295	10,290	8,606	12,664	9,938	9,712	17,443	10,440	7,601	16,867	10,214	20,947	144,017
Malawi	1,749	1,434	1,309	2,058	2,173	3,169	2,518	1,653	1,267	2,465	1,145	2,224	23,164
Kenya	1,620	1,229	1,216	1,415	1,563	1,540	1,327	1,292	1,191	1,106	851	1,537	15,887
Lesotho	583	1,221	456	1,018	992	733	1,451	715	708	1,074	526	736	10,213
Mozambique	375	375	413	452	665	884	954	452	417	545	537	733	6,802
Swaziland	479	309	276	489	954	308	660	552	497	473	394	677	6,068
Tanzania	549	646	237	509	366	631	536	360	333	467	327	521	5,482
Nigeria	303	318	324	274	296	636	309	450	319	283	125	168	3,805
Uganda	306	313	207	252	273	394	367	224	269	233	190	258	3,286
DRC	157	203	77	250	259	285	233	212	166	258	148	294	2,542
Mauritius	128	82	183	80	460	106	221	197	115	164	117	146	1,999
Ghana	192	120	75	120	188	113	209	171	171	110	54	113	1,636
Angola	62	110	84	97	63	63	251	126	168	136	52	102	1,314
Ethiopia	64	75	76	75	214	107	161	75	171	43	45	117	1,223
Other Africa	127	268	295	304	474	417	454	302	339	309	268	211	3,768
Total	143,637	141,068	142,978	200,697	158,989	326,485	270,142	152,677	132,285	216,732	127,103	243,473	2,256,266
America:													
United States of America	954	1,719	2,690	4,406	4,838	7,303	4,165	4,115	3,799	1,935	2,289	2,020	40,233
Canada	643	1,048	1,045	1,289	1,329	1,121	978	1,148	851	1,522	762	810	12,546
Other America	319	546	635	556	1,036	1,041	880	829	652	484	248	173	7,399
Total	1,916	3,313	4,370	6,251	7,203	9,465	6,023	6,092	5,302	3,941	3,299	3,003	60,178

Table 8 Continued: Total Arrivals by Nationality and Month of Arrival – 2012

Nationality	MONTH												Total
	Jan	Feb	Mar	Apr	May	Jun	Jul	Aug	Sep	Oct	Nov	Dec	
Europe:													
United Kingdom	2,464	3,630	2,890	6,312	6,025	7,286	5,247	6,086	3,889	2,873	3,416	3,156	53,274
Germany	1,891	1,416	2,252	2,239	2,095	3,315	2,918	3,559	4,379	6,757	1,640	1,908	34,369
Netherlands	796	1,049	558	806	1,394	1,890	1,910	2,125	1,691	3,883	304	1,064	17,470
France	664	540	1,075	1,235	1,668	1,963	1,628	2,211	1,007	2,111	283	660	15,045
Italy	658	256	392	525	598	497	1,130	2,628	803	929	540	500	9,456
Switzerland	329	256	516	860	810	855	1,114	804	936	1,559	506	491	9,036
Spain	175	246	444	406	207	319	845	2,356	728	1,077	449	411	7,663
Belgium	370	404	784	580	611	294	821	754	634	1,225	726	425	7,628
Sweden	312	701	433	333	335	114	221	195	219	559	669	336	4,427
Denmark	497	996	435	134	130	425	229	217	481	343	291	169	4,347
Austria	216	604	193	77	257	152	329	576	345	645	301	172	3,867
Ireland	271	86	273	376	342	522	403	262	363	348	239	335	3,820
Portugal	315	161	173	288	252	368	264	298	266	264	198	288	3,135
Norway	190	472	365	132	177	166	236	130	177	353	337	199	2,934
Russia	433	303	419	144	138	302	103	221	160	291	178	113	2,805
Poland	58	202	242	255	125	184	164	110	134	354	355	96	2,279
Finland	129	131	87	200	129	286	57	103	146	286	300	228	2,082
Other Europe	142	144	359	726	533	1,071	563	634	633	365	347	292	5,809
Total	9,910	11,597	11,890	15,628	15,826	20,009	18,182	23,269	16,991	24,222	11,079	10,843	189,446
Asia:													
India	464	534	150	3,256	3,415	3,409	1,650	2,147	1,337	1,499	859	1,129	19,849
China	845	549	771	743	644	1,389	1,124	1,168	1,120	818	837	675	10,683
Japan	405	391	946	700	710	250	918	1,013	877	1,555	289	392	8,446
Korea	1,364	310	397	182	125	292	454	193	170	114	135	171	3,907
Sri Lanka	305	282	164	108	325	825	249	142	314	179	87	316	3,296
Pakistan	280	216	125	438	469	527	282	139	183	257	109	268	3,293
Bangladesh	135	307	222	109	224	364	314	133	160	230	133	399	2,730
Israel	134	203	162	212	219	321	188	213	252	278	148	85	2,415
Other Asia	154	186	258	676	825	927	345	683	449	214	191	216	5,124
Total	4,086	2,978	3,195	6,424	6,956	8,304	5,524	5,831	4,862	5,144	2,788	3,651	59,743
Oceania:													
Australia	481	687	991	1,663	1,261	2,776	1,374	1,314	2,001	827	811	990	15,176
New Zealand	239	266	230	672	573	639	314	484	427	406	261	483	4,994
Total	720	953	1,221	2,335	1,834	3,415	1,688	1,798	2,428	1,233	1,072	1,473	20,170
Not Known	1,319	1,686	1,657	2,584	3,850	4,199	2,585	2,396	2,507	1,305	1,227	1,437	26,752
Total	161,588	161,595	165,311	233,919	194,658	371,877	304,144	192,063	164,375	252,577	146,568	263,880	2,612,555

Table 9: Total Arrivals by Country of Residence and Month of Arrival – 2012

Country of Residence	MONTH												Total
	Jan	Feb	Mar	Apr	May	Jun	Jul	Aug	Sep	Oct	Nov	Dec	
Africa:													
Zimbabwe	49,438	33,839	59,612	81,832	36,329	196,245	128,474	66,536	53,017	95,009	48,319	107,645	956,295
South Africa	47,666	52,797	44,142	59,175	66,748	73,458	84,449	54,649	51,507	59,418	43,855	78,159	716,023
Botswana	26,678	16,561	18,796	25,854	29,424	33,383	34,071	18,489	17,178	30,226	12,783	23,675	287,118
Zambia	9,586	26,095	10,657	19,343	13,764	14,963	3,306	2,322	2,237	15,516	11,433	13,968	143,190
Namibia	8,169	8,967	8,241	11,771	9,432	5,343	15,898	8,299	6,196	13,693	8,410	16,902	121,321
Lesotho	266	665	216	540	617	251	836	359	395	600	356	351	5,452
Malawi	390	485	204	354	482	602	662	339	272	711	333	479	5,313
Swaziland	371	257	178	391	741	207	521	367	351	344	332	686	4,746
Mozambique	164	297	237	218	238	434	614	257	214	321	372	343	3,709
Kenya	243	267	135	302	373	284	239	295	288	174	231	200	3,031
Tanzania	274	402	109	338	199	384	209	148	147	266	221	280	2,977
Uganda	118	153	48	121	126	103	122	80	95	93	158	102	1,319
Angola	24	56	56	84	84	44	169	81	104	55	24	112	893
DRC	31	40	43	69	38	139	85	81	59	102	88	104	879
Nigeria	47	24	83	45	69	44	85	155	89	24	80	32	777
Other Africa	172	163	221	260	325	601	402	220	136	180	108	435	3,223
Total	143,637	141,068	142,978	200,697	158,989	326,485	270,142	152,677	132,285	216,732	127,103	243,473	2,256,266
America:													
United States of America	1,543	2,525	3,501	4,638	5,843	7,938	5,135	4,971	4,438	2,288	2,480	2,146	47,446
Canada	280	596	667	1,133	959	983	645	827	593	1,362	563	559	9,167
Other America	93	192	202	480	401	544	243	294	271	291	256	298	3,565
Total	1,916	3,313	4,370	6,251	7,203	9,465	6,023	6,092	5,302	3,941	3,299	3,003	60,178

Table 9 Continued: Total Arrivals by Country of Residence and Month of Arrival – 2012

Country of Residence	MONTH												Total
	Jan	Feb	Mar	Apr	May	Jun	Jul	Aug	Sep	Oct	Nov	Dec	
Europe:													
United Kingdom	2,456	4,243	3,071	5,000	4,776	7,333	4,800	4,672	3,508	5,589	2,430	2,795	50,673
Germany	2,095	1,547	2,645	3,088	3,365	3,187	3,329	4,972	5,765	6,908	2,500	2,376	41,777
Netherlands	887	869	578	1,046	1,360	1,872	2,159	2,163	1,657	3,523	1,075	1,095	18,284
France	485	331	894	1,303	1,818	1,297	1,610	2,410	942	1,649	1,084	664	14,487
Switzerland	344	207	579	1,317	883	711	1,301	873	1,017	1,428	725	576	9,961
Italy	550	211	314	561	523	435	1,038	2,704	729	602	363	452	8,482
Spain	169	171	438	408	218	577	885	2,361	713	807	287	267	7,301
Belgium	272	245	644	563	503	306	773	760	435	878	399	386	6,164
Sweden	453	816	586	542	332	201	205	238	157	547	591	461	5,129
Denmark	602	970	532	127	91	866	268	171	549	365	185	261	4,987
Austria	276	650	171	132	318	339	444	697	392	658	237	170	4,484
Norway	199	432	345	186	200	494	226	115	157	310	227	276	3,167
Russia	492	304	377	186	358	183	123	196	132	226	133	137	2,847
Ireland	105	20	166	310	175	647	239	158	158	75	99	192	2,344
Poland	62	164	212	207	256	179	158	108	87	159	195	50	1,837
Portugal	123	109	93	159	192	203	150	194	179	74	77	156	1,709
Finland	95	121	58	211	61	184	59	106	105	169	278	238	1,685
Other Europe	245	187	187	282	397	995	415	371	309	255	194	291	4,128
Total	9,910	11,597	11,890	15,628	15,826	20,009	18,182	23,269	16,991	24,222	11,079	10,843	189,446
Asia:													
Japan	602	605	1,371	1,936	1,431	1,283	1,530	2,037	1,815	2,639	407	726	16,382
China	532	608	473	1,413	1,466	1,499	1,216	1,528	1,021	945	1,029	927	12,657
India	563	551	111	1,009	2,784	2,513	1,290	845	827	633	436	695	12,257
Korea	1,852	461	551	343	136	652	696	321	280	157	259	429	6,137
Israel	102	213	81	440	191	462	110	333	314	263	157	102	2,768
Other Asia	435	540	608	1,283	948	1,895	682	767	605	507	500	772	9,542
Total	4,086	2,978	3,195	6,424	6,956	8,304	5,524	5,831	4,862	5,144	2,788	3,651	59,743
Oceania:													
Australia	625	805	1,135	1,965	1,524	2,702	1,507	1,524	2,080	1,104	935	1,198	17,104
New Zealand	95	148	86	370	310	713	181	274	348	129	137	275	3,066
Total	720	953	1,221	2,335	1,834	3,415	1,688	1,798	2,428	1,233	1,072	1,473	20,170
Not Known	1,319	1,686	1,657	2,584	3,850	4,199	2,585	2,396	2,507	1,305	1,227	1,437	26,752
Total	161,588	161,595	165,311	233,919	194,658	371,877	304,144	192,063	164,375	252,577	146,568	263,880	2,612,555

Table 10: Total Arrivals by Border Post and Continent of Nationality - 2012

Border Post	CONTINENT OF NATIONALITY						Total	% Distribution
	Africa	America	Europe	Asia	Oceania	Not Stated		
Ramokgwebana Road	741,127	548	4,332	529	240	6,158	752,934	28.8
Tlokweng Gate	428,402	10,276	27,682	19,286	1,960	7,793	495,399	19.0
Kazungula Ferry	179,132	9,456	22,235	2,591	2,773	1,517	217,704	8.3
Martins Drift	166,810	2,649	12,319	1,733	2,360	962	186,833	7.2
Ramatlabama Road	147,432	934	3,371	3,735	186	765	156,423	6.0
Pioneer Gate	127,639	972	4,987	2,072	339	226	136,235	5.2
SSK Airport	61,722	9,250	20,276	17,334	1,764	3,645	113,991	4.4
Kazungula Road	61,208	9,947	25,449	8,437	3,612	2,667	111,320	4.3
Mamuno	61,787	649	5,879	415	405	121	69,256	2.7
Ngoma	32,017	970	16,423	134	1,231	62	50,837	1.9
Maitsiloje	48,790	26	181	-	26	78	49,101	1.9
Ramotswa	36,213	578	3,797	1,876	171	137	42,772	1.6
Parrshall	40,165	154	1,318	132	115	129	42,013	1.6
Maun	5,710	7,503	14,746	490	2,266	2,237	32,952	1.3
Kasane	20,009	1,826	5,344	13	528	15	27,735	1.1
Mohembo	8,914	628	10,015	165	1,336	7	21,065	0.8
Sikwane	19,207	213	638	91	53	16	20,218	0.8
Maitengwe	18,685	-	12	-	-	8	18,705	0.7
Pointdrift	5,876	448	3,056	35	254	23	9,692	0.4
Kasane Airport	3,114	1,812	2,352	190	301	18	7,787	0.3
Tshabong	6,698	15	342	45	3	23	7,126	0.3
Bray	6,719	24	109	5	1	24	6,882	0.3
Phitshane Molopo	6,250	15	98	-	-	44	6,407	0.2
Plaatjan	4,302	171	1,034	29	42	7	5,585	0.2
Francistown Airport	2,509	321	839	324	94	8	4,095	0.2
Bokspits	3,406	24	85	15	-	36	3,566	0.1
Middlepits	2,658	-	20	-	-	5	2,683	0.1
Zanzibar	2,210	46	342	-	7	3	2,608	0.1
Two Rivers	1,753	29	576	3	3	4	2,368	0.1
Pandamatenga	1,468	98	509	9	21	-	2,105	0.1
Dobe	943	45	348	44	41	8	1,429	0.1
Limpopo Valley	442	483	356	3	21	-	1,305	0.0
Makopong	713	29	45	3	1	4	795	0.0
Sowa Airport	618	1	153	2	2	-	776	0.0
Shakawe Airport	613	-	-	-	-	-	613	0.0
Jwaneng	465	30	42	2	2	1	542	0.0
Orapa	377	3	58	-	12	-	450	0.0
Selibe Phikwe Airport	163	5	78	1	-	1	248	0.0
Total	2,256,266	60,178	189,446	59,743	20,170	26,752	2,612,555	100.0

Table 11: Total Arrivals by Border Post and Month of Arrival – 2012

Border Post	MONTH												Total
	Jan	Feb	Mar	Apr	May	Jun	Jul	Aug	Sep	Oct	Nov	Dec	
Ramokgwebana	51,520	86,155	40,358	66,028	58,464	106,445	76,014	50,442	41,464	65,572	39,501	70,971	752,934
Tlokweng Gate	34,983	26,093	47,054	37,171	35,410	76,870	51,208	34,561	30,469	50,548	30,585	40,447	495,399
Kazungula Ferry	13,275	9,330	14,505	19,938	18,019	32,362	28,662	17,774	15,266	22,505	11,146	14,922	217,704
Martins Drift	8,870	6,845	6,801	27,012	11,949	26,501	20,234	13,160	13,233	16,332	11,112	24,784	186,833
Ramatlabama	9,892	6,595	11,458	13,714	10,489	21,595	17,253	10,096	9,744	15,856	9,692	20,039	156,423
Pioneer Gate	8,194	6,549	9,090	3,600	11,635	24,223	14,852	9,376	9,521	12,849	9,376	16,970	136,235
SSK Airport	5,893	3,635	7,826	10,464	9,491	15,207	17,146	8,981	7,390	13,012	5,654	9,292	113,991
Kazungula Road	5,597	3,748	6,383	9,979	8,210	12,335	16,380	11,530	9,415	12,656	5,876	9,211	111,320
Mamuno	3,196	1,410	3,005	11,366	4,020	4,708	8,921	3,585	2,864	6,233	3,531	16,417	69,256
Ngoma	2,296	1,419	2,422	3,895	4,498	6,406	6,947	4,999	3,955	5,550	3,156	5,294	50,837
Maitisiloje	6,290	1,640	2,317	5,204	4,238	5,692	4,372	3,514	2,695	3,832	3,275	6,032	49,101
Ramotswa	2,190	1,189	2,250	3,499	2,495	7,420	5,392	3,262	1,850	5,129	2,770	5,326	42,772
Parshall	814	626	1,437	4,276	2,015	6,765	8,802	2,735	1,751	3,619	1,330	7,843	42,013
Maun Airport	1,015	768	1,807	2,746	2,627	5,404	4,549	3,382	2,483	3,452	2,288	2,431	32,952
Kasane	2,028	1,549	2,140	1,827	2,338	2,969	5,360	2,517	2,355	1,821	798	2,033	27,735
Mohembo	1,006	547	893	1,530	1,456	1,222	3,652	2,695	1,863	2,901	1,328	1,972	21,065
Sikwane	944	844	1,220	2,212	1,320	3,228	2,229	1,459	1,458	1,819	1,298	2,187	20,218
Maitengwe	1,174	486	875	2,229	1,275	2,973	2,758	1,391	1,011	1,792	1,469	1,272	18,705
Pointdrift	172	172	498	751	449	1,365	1,728	1,565	579	1,278	396	739	9,692
Kasane Airport	201	303	416	639	747	1,130	1,158	828	711	847	343	464	7,787
Tshabong	326	256	232	977	528	930	912	646	709	455	226	929	7,126
Bray	320	274	458	631	491	1,174	933	502	493	709	168	729	6,882
Phitshane Molopo	334	185	361	687	404	856	708	654	511	762	121	824	6,407
Plaatjan	78	265	352	789	316	847	476	473	421	508	87	973	5,585
Francistown Airport	253	242	262	387	310	569	462	305	250	454	290	311	4,095
Bokspits	152	100	125	511	361	573	465	247	248	308	97	379	3,566
Middlepits	102	106	127	363	157	326	306	225	228	233	100	410	2,683
Zanzibar	-	-	49	428	212	409	440	318	279	359	94	20	2,608
Two Rivers	113	52	90	299	185	277	344	92	148	409	137	222	2,368
Pandamatenga	91	33	52	202	120	227	442	218	209	249	62	200	2,105
Dobe	51	20	68	102	106	157	275	169	126	188	88	79	1,429
Limpopo Valley	27	19	136	78	54	103	529	123	76	104	33	23	1,305
Makopong	48	27	75	124	89	113	71	48	33	60	28	79	795
Sowa Airport	28	31	82	97	98	135	72	51	53	57	29	43	776
Shakawe Airport	-	-	-	-	-	150	5	-	458	-	-	-	613
Jwaneng	27	37	49	76	52	103	45	96	24	33	-	-	542
Orapa	59	43	24	58	9	43	37	17	30	64	61	5	450
Selibe Phikwe Airport	29	2	14	30	21	65	5	27	2	22	23	8	248
Total	161,588	161,595	165,311	233,919	194,658	371,877	304,144	192,063	164,375	252,577	146,568	263,880	2,612,555
Monthly % Distribution	6.2	6.2	6.3	9	7.5	14.2	11.6	7.4	6.3	9.7	5.6	10.1	100.0

Table 12: Total Arrivals by Month of Arrival and Mode of Travel – 2012

Month	MODE OF TRAVEL				Total
	Road	Air	Other	Not Stated	
January	153,582	7,969	37	-	161,588
February	154,302	7,293	-	-	161,595
March	154,576	10,720	14	1	165,311
April	225,492	8,361	66	-	233,919
May	174,461	20,197	-	-	194,658
June	363,940	7,833	104	-	371,877
July	288,964	15,180	-	-	304,144
August	174,427	17,627	9	-	192,063
September	148,414	15,961	-	-	164,375
October	240,499	11,999	79	-	252,577
November	135,641	10,926	1	-	146,568
December	256,426	7,454	-	-	263,880
Total	2,470,724	141,520	310	1	2,612,555
% Distribution	94.6	5.4	0.0	0.0	100.0

Table 13: Total Arrivals by Month and Quarter of Arrivals – 2002 to 2012

Month	2002	2003	2004	2005	2006	2007	2008	2009	2010	2012
January	164,526	165,224	178,461	188,193	171,519	200,776	162,070	214,663	198,321	161,588
February	135,340	146,459	151,140	152,307	79,914	121,972	170,089	164,953	192,746	161,595
March	154,379	160,986	160,143	177,844	165,986	157,346	196,316	189,057	202,023	165,311
1st Quarter	454,245	472,669	489,744	518,344	417,419	480,094	528,475	568,673	593,090	488,494
April	158,707	168,918	173,633	132,755	133,006	169,768	217,363	202,157	285,284	233,919
May	149,792	164,901	160,701	145,624	123,065	127,144	219,532	199,215	234,688	194,658
June	152,151	168,511	155,681	168,295	135,013	162,750	200,195	175,247	465,023	371,877
2nd Quarter	460,650	502,330	490,015	446,674	391,084	459,662	637,090	576,619	984,995	800,454
July	166,001	184,865	175,194	147,845	157,743	188,142	236,655	203,378	379,354	304,144
August	169,209	185,390	178,002	143,736	165,530	222,798	230,385	213,779	233,852	192,063
September	156,119	174,374	164,467	200,444	203,344	203,212	235,308	191,393	201,490	164,375
3rd Quarter	491,329	544,629	517,663	492,025	526,617	614,152	702,348	608,550	814,696	660,582
October	163,895	170,984	170,299	188,131	140,969	215,857	237,691	176,593	307,214	252,577
November	159,823	179,793	154,557	145,042	160,160	212,009	220,919	180,463	178,688	146,568
December	187,877	196,114	154,471	197,811	183,808	219,179	282,363	225,390	329,079	263,880
4th Quarter	511,595	546,891	479,327	530,984	484,937	647,045	740,973	582,446	814,981	663,025
Total	1,917,819	2,066,519	1,976,749	1,988,027	1,820,057	2,200,953	2,608,886	2,336,288	3,207,762	2,612,555

* 2011 figures will be published once available to complete the series

Table 14: Total Departure by Nationality and Sex – 2012

Nationality	SEX		Total	% Distribution
	Male	Female		
Africa:				
Zimbabwe	418,456	382,651	801,107	34.0
South Africa	427,489	199,171	626,660	26.6
Namibia	83,572	39,078	122,650	5.2
Zambia	107,583	67,887	175,470	7.5
Uganda	1,397	494	1,891	0.1
Tanzania	2,561	1,088	3,649	0.2
Swaziland	2,586	1,106	3,692	0.2
Nigeria	1,412	591	2,003	0.1
Mozambique	3,322	777	4,099	0.2
Mauritius	741	328	1,069	0.0
Malawi	7,310	2,907	10,217	0.4
Lesotho	2,145	2,280	4,425	0.2
Kenya	4,163	1,806	5,969	0.3
Ghana	621	227	848	0.0
DRC	1,241	411	1,652	0.1
Other Africa	1,270	847	2,117	0.1
Total	1,065,869	701,649	1,767,518	75.1
Asia:				
Bangladesh	4,262	1,125	5,387	0.2
China	16,767	5,788	22,555	1.0
India	32,789	13,947	46,736	2.0
Israel	2,580	1,284	3,864	0.2
Japan	8,511	12,545	21,056	0.9
Korea	4,243	3,695	7,938	0.3
Pakistan	4,819	1,424	6,243	0.3
Sri Lanka	4,483	2,115	6,598	0.3
Other Asia	5,515	2,947	8,462	0.4
Total	83,969	44,870	128,839	5.5

Table 14 Continued: Total Departure by Nationality and Sex – 2012

Nationality	SEX		Total	% Distribution
	Male	Female		
Europe:				
United Kingdom	69,954	53,608	123,562	5.2
Switzerland	8,497	9,179	17,676	0.8
Sweden	5,365	4,430	9,795	0.4
Spain	7,379	7,784	15,163	0.6
Russia	2,964	2,256	5,220	0.2
Portugal	4,039	1,760	5,799	0.2
Poland	2,447	1,734	4,181	0.2
Norway	2,747	2,587	5,334	0.2
Netherlands	15,873	17,245	33,118	1.4
Italy	11,241	9,124	20,365	0.9
Ireland	3,968	3,714	7,682	0.3
Germany	44,267	40,054	84,321	3.6
France	15,619	13,297	28,916	1.2
Finland	1,440	1,791	3,231	0.1
Denmark	3,982	3,890	7,872	0.3
Belgium	6,837	5,585	12,422	0.5
Austria	4,398	3,948	8,346	0.4
Other Europe	4,785	4,128	8,913	0.4
Total	215,802	186,114	401,916	17.1
America:				
United States of America	10,116	11,362	21,478	0.9
Canada	2,060	2,377	4,437	0.2
Other America	930	1,050	1,980	0.1
Total	13,106	14,789	27,895	1.2
Oceania:				
Australia	8,132	7,750	15,882	0.7
New Zealand	1,841	1,934	3,775	0.2
other Oceania	11	11	22	0.0
Total	9,984	9,695	19,679	0.8
Not known	5,098	2,763	7,861	0.3
Total	1,393,828	959,880	2,353,708	100.0
% Distribution	59.2	40.8	100.0	

Table 15: Total Departures by Country of Residence and Sex - 2012

Country of Residence	Sex		Total	% Distribution
	Male	Female		
Africa:				
Zimbabwe	407,887	415,505	823,392	35
South Africa	438,335	170,458	608,793	25.9
Botswana	2,192	1,110	3,302	0.1
Zambia	105,109	64,684	169,793	7.2
Namibia	81,386	37,599	118,985	5.1
Malawi	7,802	2,148	9,950	0.4
Lesotho	2,196	2,069	4,265	0.2
Swaziland	2,512	1,072	3,584	0.2
Kenya	3,953	1,838	5,791	0.2
Tanzania	2,646	903	3,549	0.2
Mozambique	3,179	815	3,994	0.2
Uganda	1,300	536	1,836	0.1
Other Africa	7,372	2,912	10,284	0.4
Total	1,065,869	701,649	1,767,518	75.1
Asia:				
Japan	8,942	12,764	21,706	0.9
India	35,853	13,126	48,979	2.1
Korea	4,358	3,874	8,232	0.3
China	17,697	5,960	23,657	1
Other Asia	17,119	9,146	26,265	1.1
Total	83,969	44,870	128,839	5.5
Europe:				
United Kingdom	67,142	56,492	123,634	5.3
Germany	45,296	39,027	84,323	3.6
Netherlands	16,432	16,560	32,992	1.4
France	15,883	13,066	28,949	1.2
Switzerland	8,754	8,854	17,608	0.7
Italy	11,552	8,869	20,421	0.9
Spain	7,566	7,544	15,110	0.6
Belgium	6,934	5,512	12,446	0.5
Sweden	5,400	4,407	9,807	0.4
Austria	4,461	3,883	8,344	0.4
Denmark	4,031	3,824	7,855	0.3
Russia	3,206	2,051	5,257	0.2
Norway	2,526	2,777	5,303	0.2
Ireland	4,004	3,666	7,670	0.3
Poland	2,376	1,818	4,194	0.2
Other Europe	10,239	7,764	18,003	0.8
Total	215,802	186,114	401,916	17.1
America:				
United States of America	9,856	11,633	21,489	0.9
Canada	2,054	2,385	4,439	0.2
Other America	1,196	771	1,967	0.1
Total	13,106	14,789	27,895	1.2
Oceania:				
Australia	8,180	7,709	15,889	0.7
New Zealand	1,792	1,975	3,767	0.2
Other Oceania	12	11	23	0.0
Total	9,984	9,695	19,679	0.8
Not Known	5,098	2,763	7,861	0.3
Total	1,393,828	959,880	2,353,708	100.0

Table 16: Total Departure by Nationality and Age Group

Nationality	AGE GROUP											Not Stated	Total
	<=19	20-24	25-29	30-34	35-39	40-44	45-49	50-54	55-59	60-64	65+		
Africa:													
Zimbabwe	11,362	60,024	156,571	174,083	155,973	108,393	62,996	32,727	18,700	8,417	7,974	3,887	801,107
South Africa	18,939	32,315	56,137	80,888	93,944	94,786	83,999	59,019	43,627	28,613	32,087	2,306	626,660
Namibia	4,168	10,580	17,084	19,252	18,911	17,684	13,682	9,019	4,944	3,242	3,711	373	122,650
Zambia	3,922	15,307	32,034	38,544	31,517	22,573	15,500	8,216	3,701	1,730	1,765	661	175,470
Uganda	82	98	220	416	279	199	164	155	164	27	82	5	1,891
Tanzania	158	263	451	533	582	505	365	332	321	94	45	-	3,649
Swaziland	114	197	586	697	513	481	521	287	65	140	75	16	3,692
Nigeria	16	82	82	426	409	384	157	249	92	42	57	7	2,003
Mozambique	98	318	465	1,079	581	448	401	409	130	41	129	-	4,099
Mauritius	24	42	112	122	65	139	226	189	82	9	33	26	1,069
Malawi	187	815	1,396	1,387	1,974	1,553	1,031	961	375	269	245	24	10,217
Lesotho	196	336	574	860	713	448	394	401	221	65	193	24	4,425
Kenya	293	305	554	1,061	985	1,019	768	500	255	90	122	17	5,969
Ghana	16	24	65	172	84	34	99	109	108	134	2	1	848
DRC	29	41	126	313	400	330	205	93	90	8	16	1	1,652
Other Africa	33	139	165	271	442	312	279	254	116	60	41	5	2,117
Total	39,637	120,886	266,622	320,104	307,372	249,288	180,787	112,920	72,991	42,981	46,577	7,353	1,767,518
Asia:													
Bangladesh	100	470	1,031	1,103	1,196	879	221	128	131	-	128	-	5,387
China	467	1,963	2,963	2,614	3,673	3,645	3,922	1,527	470	343	626	342	22,555
India	1,436	2,508	5,925	4,944	9,683	7,872	4,682	3,355	2,816	1,523	1,922	70	46,736
Israel	65	349	343	502	343	318	293	499	343	623	186	-	3,864
Japan	249	436	1,252	1,910	1,053	1,352	1,386	913	1,122	4,081	7,206	96	21,056
Korea	156	499	894	717	374	748	689	779	1,371	748	963	-	7,938
Pakistan	162	567	480	1,006	1,280	972	723	218	361	252	190	32	6,243
Sri Lanka	343	380	661	823	1,081	851	1,003	499	383	196	378	-	6,598
Other Asia	287	315	611	991	988	869	1,134	1,206	829	564	661	7	8,462
Total	3,265	7,487	14,160	14,610	19,671	17,506	14,053	9,124	7,826	8,330	12,260	547	128,839

Table 16 Continued: Total Departure by Nationality and Age Group

Nationality	AGE GROUP											Not Stated	Total
	<=19	20-24	25-29	30-34	35-39	40-44	45-49	50-54	55-59	60-64	65+		
Europe:													
United Kingdom	6,389	6,791	7,367	12,387	15,376	17,983	9,991	13,012	10,981	10,548	12,473	264	123,562
Switzerland	571	816	1,418	1,629	1,232	1,740	1,492	2,014	1,746	1,837	3,098	83	17,676
Sweden	699	602	1,104	1,050	756	602	605	810	639	1,124	1,660	144	9,795
Spain	573	693	1,241	2,313	2,151	1,412	1,629	2,279	1,235	810	770	57	15,163
Russia	225	399	465	767	670	690	542	559	579	231	91	2	5,220
Portugal	117	177	656	687	742	351	348	582	836	285	1,018	-	5,799
Poland	177	151	177	499	551	682	605	670	351	120	198	-	4,181
Norway	228	1,084	807	317	317	371	345	288	414	667	465	31	5,334
Netherlands	1,523	2,952	3,537	3,571	2,219	2,333	2,453	3,508	3,488	3,748	3,665	121	33,118
Italy	442	670	1,412	3,611	3,098	2,082	2,182	2,091	1,663	1,053	2,002	59	20,365
Ireland	345	573	1,269	702	682	553	542	998	659	673	656	30	7,682
Germany	1,934	3,745	5,337	8,531	11,851	14,004	8,699	9,258	7,313	6,651	6,837	161	84,321
France	1,007	1,569	2,735	2,929	2,385	2,593	2,695	3,520	2,775	2,912	3,677	119	28,916
Finland	86	211	385	385	34	260	359	513	359	382	257	-	3,231
Denmark	177	456	804	630	436	559	719	531	759	1,015	1,729	57	7,872
Belgium	936	579	953	1,075	870	1,563	1,566	1,546	1,515	1,013	802	4	12,422
Austria	474	431	362	565	254	719	1,050	1,358	899	1,101	1,078	55	8,346
Other Europe	325	362	562	1,252	1,030	1,358	773	1,440	625	605	525	56	8,913
Total	16,228	22,261	30,591	42,900	44,654	49,855	36,595	44,977	36,836	34,775	41,001	1,243	401,916
America:													
USA	849	1,592	1,381	2,050	2,281	2,341	1,528	1,801	1,938	2,188	3,402	127	21,478
Canada	228	405	543	302	247	376	371	399	390	429	730	17	4,437
Other America	89	123	287	295	237	195	180	202	160	116	96	-	1,980
Total	1,166	2,120	2,211	2,647	2,765	2,912	2,079	2,402	2,488	2,733	4,228	144	27,895
Oceania:													
Australia	486	1,043	2,001	1,159	2,246	2,033	1,050	1,341	1,528	1,323	1,579	93	15,882
New Zealand	120	289	417	355	187	286	389	422	353	503	454	-	3,775
Other Oceania	-	-	-	-	-	-	11	-	-	-	11	-	22
Total	606	1,332	2,418	1,514	2,433	2,319	1,450	1,763	1,881	1,826	2,044	93	19,679
Not known	196	585	965	1,204	1,020	812	647	962	527	318	500	125	7,861
Total	61,098	154,671	316,967	382,979	377,915	322,692	235,611	172,148	122,549	90,963	106,610	9,505	2,353,708
% Distribution	2.6	6.6	13.5	16.3	16.1	13.7	10.0	7.3	5.2	3.9	4.5	0.4	100.0

Table 17: Total Departures by Country of Residence and Age Group - 2012

Country of Residence	AGE GROUP											Not Stated	Total
	<=19	20-24	25-29	30-34	35-39	40-44	45-49	50-54	55-59	60-64	65+		
Africa:													
Zimbabwe	12,458	63,692	164,863	178,661	159,402	106,655	64,564	32,070	18,407	8,912	9,365	4,343	823,392
South Africa	17,681	29,992	51,095	77,146	92,489	94,826	82,285	59,376	43,505	27,587	30,403	2,408	608,793
Botswana	97	118	294	483	641	562	382	314	204	118	88	1	3,302
Zambia	3,939	14,525	29,934	37,862	30,549	22,960	14,841	7,750	3,646	1,857	1,885	45	169,793
Namibia	4,236	9,750	14,800	18,131	17,501	17,998	14,018	9,639	5,329	3,494	3,683	406	118,985
Malawi	210	724	1,212	1,597	1,456	1,806	1,083	925	328	240	305	64	9,950
Lesotho	204	297	572	759	684	407	408	390	225	81	205	33	4,265
Swaziland	95	180	468	711	565	464	492	267	107	135	90	10	3,584
Kenya	205	251	715	1,065	767	953	695	617	246	143	134	-	5,791
Tanzania	94	182	476	594	538	532	357	353	283	84	55	1	3,549
Mozambique	97	383	466	926	635	477	374	356	190	40	50	-	3,994
Uganda	75	136	279	371	342	156	207	155	60	19	36	-	1,836
Other Africa	246	656	1,448	1,798	1,803	1,492	1,081	708	461	271	278	42	10,284
Total	39,637	120,886	266,622	320,104	307,372	249,288	180,787	112,920	72,991	42,981	46,577	7,353	1,767,518
Asia:													
Japan	324	426	1,474	1,995	2,497	1,864	2,054	876	1,112	3,295	5,689	100	21,706
India	1,584	2,668	5,256	6,364	8,306	8,420	4,078	5,225	3,101	1,865	2,112	-	48,979
South Korea	215	791	1,183	818	600	596	675	604	1,315	672	763	-	8,232
China	549	2,162	3,471	2,635	4,593	3,508	4,357	841	620	306	293	322	23,657
Other Asia	593	1,440	2,776	2,798	3,675	3,118	2,889	1,578	1,678	2,192	3,403	125	26,265
Total	3,265	7,487	14,160	14,610	19,671	17,506	14,053	9,124	7,826	8,330	12,260	547	128,839

Table 17 Continued: Total Departures by Country of Residence and Age Group - 2012

Country of Residence	AGE GROUP											Not Stated	Total
	<=19	20-24	25-29	30-34	35-39	40-44	45-49	50-54	55-59	60-64	65+		
Europe:													
UK	6,424	6,874	7,838	15,537	17,024	20,034	8,658	9,988	9,359	9,889	11,676	333	123,634
Germany	1,673	2,779	4,699	9,483	10,799	12,506	8,728	9,951	7,367	6,592	9,624	122	84,323
Netherlands	1,619	3,033	3,746	2,943	2,186	2,058	2,624	4,009	3,868	3,785	2,977	144	32,992
France	1,166	1,279	2,517	2,086	2,117	2,458	2,852	4,574	3,016	3,159	3,541	184	28,949
Switzerland	624	882	1,508	1,512	1,323	1,785	1,586	2,231	1,802	1,799	2,462	94	17,608
Italy	466	787	1,646	2,997	3,055	2,000	2,317	2,432	1,867	1,232	1,578	44	20,421
Spain	513	620	1,129	1,781	1,971	1,402	1,724	2,716	1,562	894	734	64	15,110
Belgium	1,137	618	996	949	896	1,266	1,613	1,412	1,534	1,257	760	8	12,446
Sweden	759	698	1,206	857	584	352	567	843	727	1,423	1,713	78	9,807
Austria	392	450	325	431	413	689	1,198	1,553	1,049	789	1,019	36	8,344
Denmark	135	602	930	513	388	515	470	702	907	1,155	1,467	71	7,855
Russia	207	429	469	515	688	754	677	633	593	195	97	-	5,257
Norway	109	1,226	890	317	288	365	317	298	432	532	486	43	5,303
Ireland	430	1,204	1,506	643	475	477	484	686	697	468	600	-	7,670
Poland	216	188	182	310	141	524	918	824	483	197	211	-	4,194
Other Europe	358	592	1,004	2,026	2,306	2,670	1,862	2,125	1,573	1,409	2,056	22	18,003
Total	16,228	22,261	30,591	42,900	44,654	49,855	36,595	44,977	36,836	34,775	41,001	1,243	401,916
America:													
USA	829	1,567	1,505	2,236	2,376	2,384	1,553	1,733	1,816	2,085	3,297	108	21,489
Canada	256	406	554	221	190	320	380	502	497	455	633	25	4,439
Other America	81	147	152	190	199	208	146	167	175	193	298	11	1,967
Total	1,166	2,120	2,211	2,647	2,765	2,912	2,079	2,402	2,488	2,733	4,228	144	27,895
Oceania:													
Australia	447	1,042	1,915	1,358	2,224	2,119	1,066	1,356	1,546	1,243	1,480	93	15,889
New Zealand	159	290	503	156	209	200	373	407	335	583	552	-	3,767
Other Oceania	-	-	-	-	-	-	11	-	-	-	12	-	23
Total	606	1,332	2,418	1,514	2,433	2,319	1,450	1,763	1,881	1,826	2,044	93	19,679
Not Known	196	585	965	1,204	1,020	812	647	962	527	318	500	125	7,861
Total	61,098	154,671	316,967	382,979	377,915	322,692	235,611	172,148	122,549	90,963		9,505	2,353,708
% Distribution	2.6	6.6	13.5	16.3	16.1	13.7	10.0	7.3	5.2	3.9	4.5	0.4	100.0

Table 18: Total Departures by Border Post and Month of Departure – 2012

Border Post	MONTH												Total
	Jan	Feb	Mar	Apr	May	Jun	Jul	Aug	Sep	Oct	Nov	Dec	
Ramokgwebana	36,571	36,037	40,148	65,270	56,294	53,857	51,954	53,931	50,552	44,244	44,959	93,270	627,087
Tlokweng Gate	29,596	27,841	30,397	36,365	30,138	26,779	28,575	29,052	29,328	30,432	30,603	41,235	370,341
Martins drift	22,305	12,434	13,130	25,126	14,729	13,933	19,214	18,795	16,825	15,093	16,314	22,910	210,808
Kazungula Ferry	17,157	15,232	17,143	19,669	19,429	18,715	17,032	21,161	20,678	20,136	11,555	1,020	198,927
Ramatlabama	12,641	9,322	12,324	13,125	11,137	11,030	13,227	11,129	12,626	12,893	11,861	17,987	149,302
Pioneer Gate	13,220	9,565	10,706	4,114	12,568	11,977	14,250	11,425	12,805	12,817	12,611	15,960	142,018
Kazungula	10,644	8,900	11,050	7,222	8,732	9,630	13,380	15,241	12,731	12,498	9,051	11,090	130,169
SSK Airport	6,772	7,694	8,722	9,878	2,580	7,718	27,076	5,394	10,169	10,053	9,119	9,317	114,492
Mamuno	4,121	10,635	4,350	4,406	1,533	5,068	4,477	4,808	4,732	7,410	4,075	6,810	62,425
Ngoma	3,523	2,239	2,376	3,073	3,459	3,244	3,965	4,282	4,011	4,646	3,393	4,801	43,012
Ramotswa	3,643	2,958	3,174	4,233	2,238	3,211	3,852	3,413	4,115	3,570	3,418	4,673	42,498
Maitisiloje	2,198	2,437	2,691	4,683	3,914	2,950	3,007	3,220	3,080	2,833	2,880	7,738	41,631
Parrshall	4,935	1,196	2,740	2,671	1,405	2,021	2,636	6,433	2,578	2,369	1,742	2,996	33,722
Maun Airport	1,486	1,359	1,782	2,653	2,575	2,867	3,956	3,734	3,966	3,416	2,915	1,939	32,648
Kasane	2,393	2,144	2,160	1,680	2,555	2,381	2,782	2,782	2,842	1,657	1,076	3,013	27,465
Sikwane	2,197	1,327	1,246	1,954	1,436	1,351	2,043	1,475	1,718	1,710	1,500	2,154	20,111
Mohembo	1,320	955	949	1,490	1,554	679	2,449	2,466	2,189	2,225	1,612	2,206	20,094
Maitengwe	1,030	799	928	1,684	1,042	1,209	1,372	1,385	1,367	1,224	5,200	1,267	18,507
Pointdrift	506	530	800	765	706	1,200	624	877	1,130	1,006	883	800	9,827
Kasane Airport	551	504	611	768	997	886	912	1,057	941	823	652	481	9,183
Phitshane Molopo	469	301	375	697	420	373	618	753	686	633	421	880	6,626
Bray	484	400	485	525	514	512	756	503	594	650	479	628	6,530
Tshabong	505	363	270	808	474	423	738	593	658	579	346	661	6,418
Plaatjan	84	407	352	663	436	305	596	467	476	305	279	806	5,176
Francistown Airport	377	372	359	469	443	392	398	487	396	396	401	384	4,874
Bokspits	227	179	102	450	255	255	476	254	305	286	247	439	3,475
Zanzibar	-	-	58	383	272	269	556	368	475	397	224	72	3,074
Middlepits	239	200	150	323	156	137	238	259	310	237	179	328	2,756
Two Rivers	214	99	102	376	266	83	333	154	140	397	309	244	2,717
Pandamatenga	101	71	62	134	142	313	391	372	228	198	125	148	2,285
Dobe	75	69	56	100	90	114	248	104	133	85	176	47	1,297
Limpopo Valley	38	44	68	75	69	71	69	106	129	154	47	21	891
Makopong	100	42	93	95	91	62	83	51	63	59	36	87	862
Sowa Pan Airport	34	68	90	59	83	53	57	80	70	68	70	28	760
Orapa	69	79	77	64	18	26	18	21	46	77	43	5	543
Jwaneng	29	50	50	63	61	62	29	70	28	22	-	-	464
Shakawe Airport	-	8	-	34	4	-	-	-	388	-	-	8	442
Selibe/Phikwe Airport	38	4	16	35	27	42	4	31	5	19	19	11	251
Total	179,892	156,864	170,192	216,182	182,842	184,198	222,391	206,733	203,513	195,617	178,820	256,464	2,353,708
% Distribution	7.6	6.7	7.2	9.2	7.8	7.8	9.4	8.8	8.6	8.3	7.6	10.9	100.0

Table 19: Total Departures by Month of Departure and Mode of Travel - 2012

Month	Rail	Road	Air	Other	Total
January	1,616	170,066	8,139	71	179,892
February	1,426	147,670	7,694	74	156,864
March	1,517	160,695	7,939	41	170,192
April	1,262	203,112	11,619	189	216,182
May	1,642	174,767	6,432	1	182,842
June	1,392	175,309	7,447	50	184,198
July	1,524	196,294	24,570	3	222,391
August	1,723	191,239	13,771	-	206,733
September	1,468	188,857	13,187	1	203,513
October	1,415	182,950	11,251	1	195,617
November	1,843	173,482	3,495	-	178,820
December	2,501	249,765	4,198	-	256,464
Total	19,329	2,214,206	119,742	431	2,353,708
% Distribution	0.8	94.1	5.1	0.0	100.0

