

TOURISM STATISTICS 2006

Published By

**Central Statistics Office
Private Bag 0024, Gaborone
Website: www.cso.gov.bw/cso
E-mail: csobots@gov.bw**

**Contact: Demography Unit
Contact Statistician: V. Sebekedi
Tel: (267) 3671300/ (267)3190718
Fax: (267) 3952201**

**Printed by and obtainable from
Department of Printing and Publishing Services,
Private Bag 0081
Gaborone
Tel: (267) 3953202, Fax: (267) 3959392**

June 2009

COPYRIGHT RESERVED

**Extracts may be published if source
is duly acknowledged**

PREFACE

This publication is the thirtieth in the series of Tourism Statistics. It is an annual publication of the Central Statistics Office (CSO). The information contained in this publication is compiled from the Immigration Arrival/Departure forms.

Travelers leaving or entering Botswana are required to complete arrival and departure forms at all immigration posts in Botswana. In case of those immigration posts handling heavy passenger traffic, a ten percent sample of forms is selected for analysis and the resulting figures are grossed up accordingly. The forms from smaller border posts are analyzed and added to the grossed up figures from the busiest posts. Starting from October 1990, Botswana citizens were not required to complete immigration forms. The figures on arrivals and departures contained in this publication therefore cover only non-citizens, both visitors and temporary residents of Botswana.

Hotel Statistics section is not included in this publication because by the time of preparing this report, the response rate from the Hotels was very low, below 50 percent. So this report is published without the hotel statistics information.

It is important for the Immigration Department to ensure that the arrival/departure forms are completed properly and by all as this will help to improve the quality of data. Also, the Tourism Department should continue to encourage hotels to submit their monthly returns.

Users who require more information can contact the Demography Unit of CSO at the address on the copyright page. This publication is a result of cooperative efforts by the Immigration Department and Central Statistics Office.



Malebogo P. Kerekang

ACTING GOVERNMENT STATISTICIAN

Table of Contents

1.0 Introduction	1
2.0 Arrangement of Tables	1
3.0 Total Arrivals	1
3.1 Arrivals by Country of Residence	2
3.2 Arrivals by Purpose of Entry	2
3.3 Distribution of Arrivals by Sex and Age Group	3
3.4 Arrivals by Border Post	3
3.6 Mode of Travel	4
4.0 Total Departures	5
4.1 Departures by Country of Residence	5
4.2 Departures by Sex and Age	5
4.3 Distribution of Departure by Month, Mode of Travel and Border	6
Table 1: Total Arrivals by Country of Residence and Sex - 2006	7
Table 2: Total Arrivals by Purpose of Entry and Sex-2006	9
Table 3: Total Arrivals by Purpose of Entry and Age - 2006	10
Table 4: Total arrivals by Country of residence and Purpose of Entry - 2006	11
Table 5: Total Arrivals by Country of Residence and Month of Arrival - 2006	15
Table 6: Total Arrivals by Country of Residence and Border Post - 2006	19
Table 7: Arrivals by Border Post and Month of Arrival - 2006	35
Table 8: Total Arrivals by Arrival Month and Mode of Travel - 2006	37
Table 9: Total Arrivals by Age Group and Sex - 2006	37
Table 10: Total Arrivals by Country of Residence and Age Group - 2006	38
Table 11: Total Arrivals by Nationality and Age Group - 2006	42
Table 12: Total Arrivals by Border post and Purpose of Entry - 2006	46
Table 13: Total Arrivals by Month and Purpose of Entry - 2006	48
Table 14: Total arrivals by Nationality and Purpose of Entry - 2006	50
Table 15: Total Arrivals by month and Quarter for years 1996 - 2006	54
Table 16: Total Departures by Country of Residence and sex - 2006	55
Table 17: Total Departure By Country of Residence and Age Group - 2006	58
Table 18: Total Departures by Country of Residence and Month – 2006	62
Table 19: Total Departures by Country of Residence and Border post - 2006	66
Table 20: Total Departures By Border Post and Month - 2006	82
Table 21: Total Departures by Month and mode of Travel - 2006	84

1.0 Introduction

Tourism Statistics Report is an annual publication containing statistics of residents and non-residents entering and leaving the country. It also contains information on country of residence, nationality, purpose of entry, mode of travel, point of entry/departure, age and sex of travellers. This information is collected through the border posts from the departure/entry forms, which are completed by persons crossing the border. It is worth noting that only non-citizens are required to complete this form.

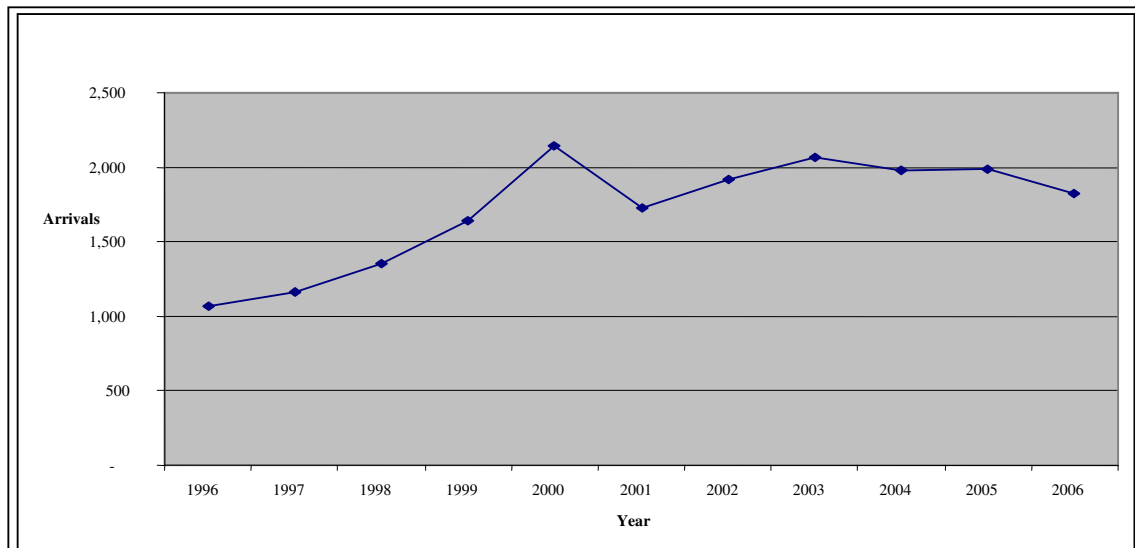
2.0 Arrangement of Tables

Tables in this publication are categorized into arrivals and departures. Tables 1 to 15 give information on arrivals, while information on departure is through Tables 16 to 21.

3.0 Total Arrivals

The number of arrivals in 2006 shows a decrease of 8.4 percent from 1,988,027 in year 2005 to 1,820,057 (Table 1). Chart 1 exhibits arrival trends from 1996 up to 2006. The arrivals pattern shows an increasing trend with the exception of 2001, 2004 and 2006.

Chart 1: Total Arrivals ('000) 1996 - 2006



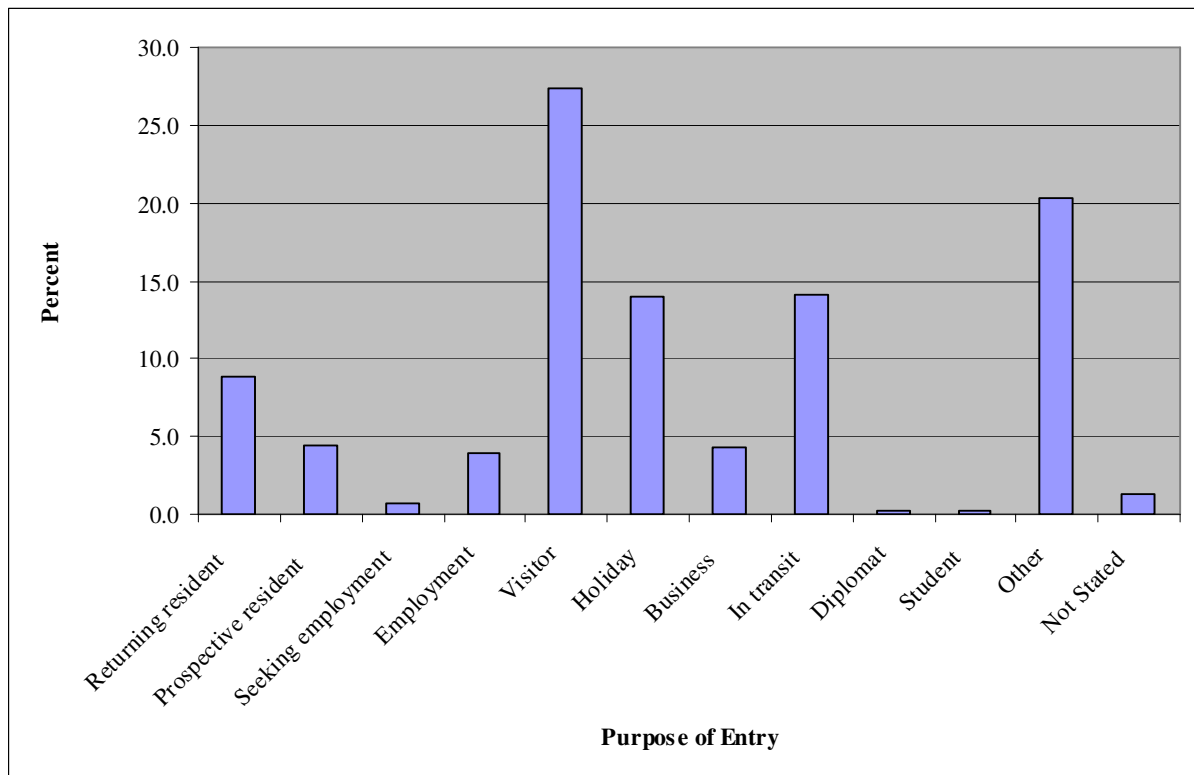
3.1 Arrivals by Country of Residence

Republic of South Africa constituted the highest proportion (31.2 percent) of all persons who came to Botswana in 2006, followed by Zimbabwe (30.1 percent) (Table 1). The highest proportion of arrivals (87.2 percent) was from Africa. The European countries constituted only 4.6 percent of the total arrivals while America contributed 2.0 percent and the continents of Asia and Oceania constituted 0.9 percent and 0.6 percent respectively.

3.2 Arrivals by Purpose of Entry

Table 2 and Chart 2 indicate that most of the arrivals came as visitors (27.3 percent) and those who were in transit, constituted 14.1 percent. More males than females entered the country for different reasons. It is only for “visiting” reasons where females dominated males. The highest number of visitors came from Zimbabwe, while South Africa contributed the highest proportion among persons on holiday (tourists).

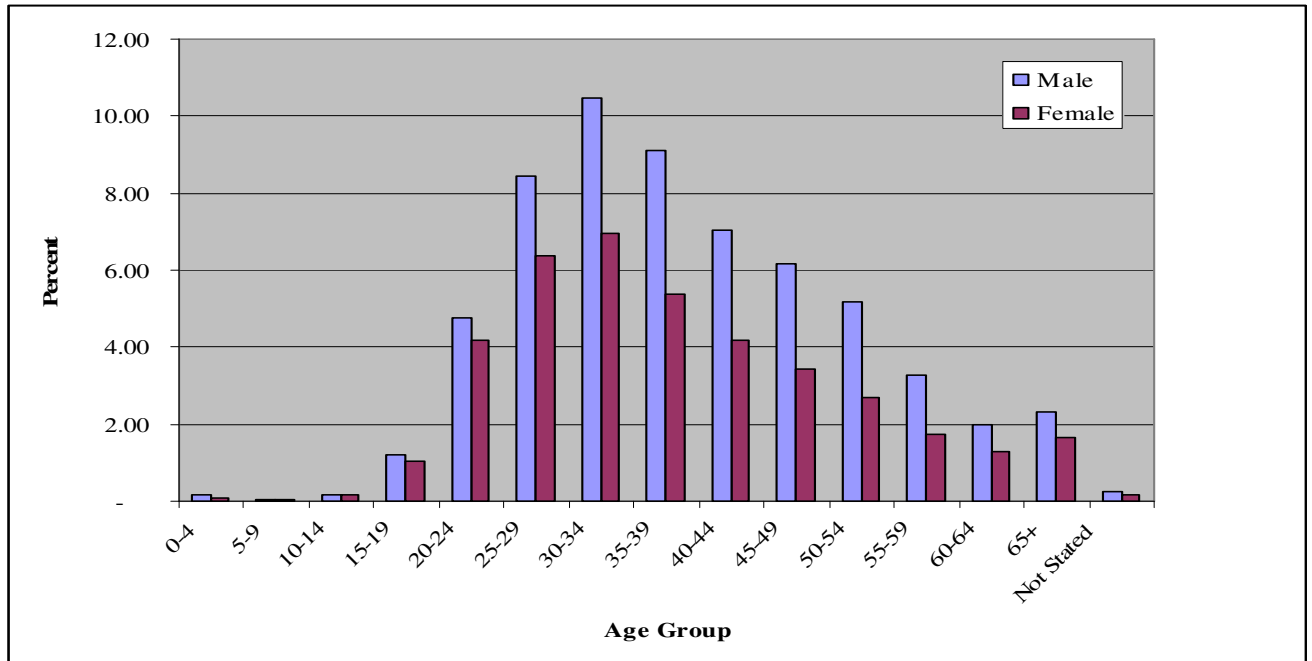
Chart 2: Percentage of Totals by Purpose of Entry - 2006



3.3 Distribution of Arrivals by Sex and Age Group

The report shows that males constituted the highest proportion of arrivals. There were about 1.1 million males and about 0.7 million female arrivals (Table 9). The highest proportion of total arrivals was in age group 30–34 with 17.4 percent, followed by age group 25-29 with 14.8 percent (Chart 3). The lowest number of arrivals was recorded in the age group 5-9 years (0.1 percent).

Chart 3: Percentage of Total Arrivals by Age Group and Sex – 2006



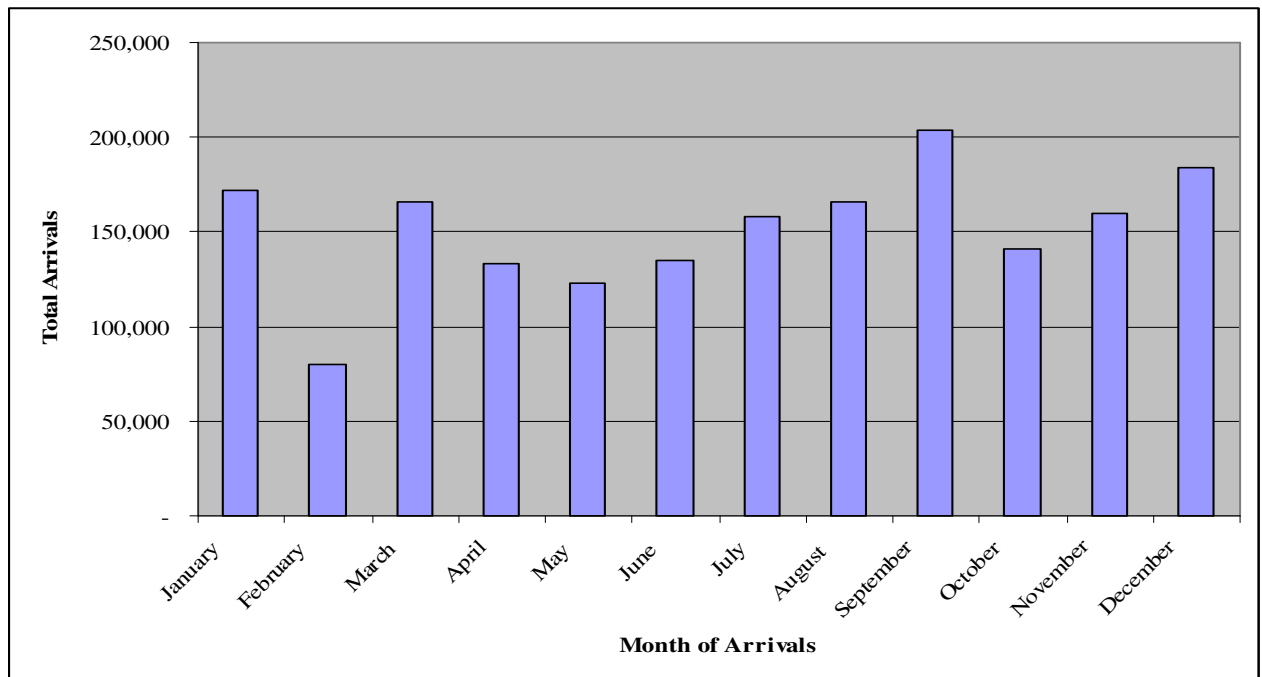
3.4 Arrivals by Border Post

The majority of arrivals, 524,290 (28.8 percent) were using Ramokgwebana road as the point of entry (Table 7). This was followed by Tlokweng gate and Kazungula ferry with 11.8 percent and 8.8 percent respectively. The lowest proportion (0.01 percent) of entrants used Boshhoek. Sir Seretse Khama Airport had the highest proportion of arrivals by air of 3.9 percent when compared to other airports. Ramokgwebana Rail is the only rail that operates and it has the lowest proportion of arrivals as compared to Road and Air.

3.5 Month of Arrival

Chart 4 shows that September was the busiest month of arrival with 203,344 persons entering the country, followed by December and January with 183,808 and 171,519 respectively (Table 8). The least number of arrivals occurred in February with 79,914 persons. Most of the persons (27.3 percent) entered the country for visiting purposes (see Table 13).

Chart 4: Total Arrivals by Month of Arrivals – 2006



3.6 Mode of Travel

The most common mode of travel was road, which accounted for 92.0 percent of all persons who entered the country (Table 8). This is attributable to the fact that most of the entry borders are through the road. Those who used air and rail were 5.7 percent and 2.2 percent respectively.

4.0 Total Departures

A total of 1,985,858 departures were recorded in 2006 (Table 16). There was a slight increase of 6.0 percent from 2005 departures figure of about 1,867,665. This minor difference could have resulted from some border posts that have started to run like Ramokgwebana rail. The 2005 figure shows that there were more arrivals than departures while in 2006 the arrivals are fewer than the departures. Out of all departures, males constituted the highest proportion of 59.1 percent compared to their female counterparts.

4.1 Departures by Country of Residence

People departing from Botswana were mostly from Southern Africa countries of Zimbabwe (38.2 percent) followed by South Africa (32.2 percent), Zambia (7.0 percent) and Namibia (5.0 percent), see Table 16. Departures from America were mostly from United States of America. The Europeans were mostly residents of the United Kingdom and the Asians were residing in Japan.

4.2 Departures by Sex and Age

Table 17 shows that age group 30-34 recorded the highest proportion (17.9 percent) of the total departures, followed by age group 35-39, with 14.8 percent and age group 25-29 with 14.6 percent. South Africa recorded the highest proportion (33.8 percent) of elderly aged 65 and above.

4.3 Distribution of Departure by Month, Mode of Travel and Border

Most of the departures in 2006 left during December (12.6 percent) followed by September (11.4 percent) and April (9.5 percent) and then March and July (8.7 percent and 8.7 percent respectively) as shown in Table 20. The highest proportion left through Ramokgwebana road (31.7 percent) followed by Kazungula road (10.9 percent) and then Tlokweng gate (10.7 percent), see Table 20. Majority of monthly departures were by road (92.4 percent) followed by those who used air with 5.4 percent while rail was 1.8 percent (Table 21). Among those using air as their mode of travel 67.4 percent used Sir Seretse Khama airport and Ghanzi airport was the least with 0.1 percent.

Table 1: Total Arrivals by Country of Residence and Sex - 2006

Country of Residence	Male	Female	Total
Africa			
Republic of South Africa	407,171	159,891	567,062
Zimbabwe	252,075	295,557	547,632
Botswana	153,456	75,223	228,679
Zambia	83,778	53,974	137,752
Namibia	55,943	25,963	81,906
Swaziland	3,000	1,216	4,216
Lesotho	2,291	1,897	4,188
Malawi	3,205	862	4,067
Kenya	1,935	1,014	2,949
Tanzania	1,397	494	1,891
Mozambique	1,206	346	1,552
Uganda	1,032	410	1,442
Nigeria	482	270	752
Mauritius	381	201	582
Angola	395	161	556
Zaire	320	150	470
Ghana	230	152	382
Egypt	262	53	315
Ethiopia	183	62	245
Seychelles	52	50	102
Sudan	50	20	70
Cameroon	41	10	51
Madagascar	40	10	50
Sierra Leone	31	10	41
Libya	30	10	40
Gabon	40	-	40
Somalia	10	30	40
Other Africa	253	103	356
America			
United States of America	14,266	16,090	30,356
Canada	2,438	2,111	4,549
Brazil	217	68	285
Argentina	100	154	254
Mexico	65	103	168
Chile	70	62	132
Barbados	10	40	50
Cuba	50	-	50
Trinidad	10	40	50
Other America	143	161	304
Europe			
United Kingdom	13,903	12,059	25,962
Germany	8,419	7,144	15,563
Netherlands	5,192	5,714	10,906
France	3,356	3,391	6,747
Spain	2,019	2,112	4,131
Italy	2,253	1,805	4,058

Table 1: Total Arrivals by Country of Residence and Sex - 2006 (cont'd)

Country of Residence	Male	Female	Total
Europe			
Switzerland	1,735	1,603	3,338
Belgium Luxembourg	1,251	1,072	2,323
Ireland	773	616	1,389
Sweden	740	619	1,359
Denmark	514	716	1,230
Norway	630	583	1,213
Austria	608	438	1,046
Russia	503	422	925
Portugal	464	243	707
Czechoslovakia	298	198	496
Poland	270	110	380
Finland	132	214	346
Greece	146	102	248
Yugoslavia	160	80	240
Bulgaria	90	30	120
Ukraine	34	50	84
Hungary	11	70	81
Luxembourg	21	50	71
Slovakia	42	20	62
Croatia	40	20	60
Romania	21	30	51
Estonia	20	30	50
Other Europe	82	61	143
Asia			
Japan	2,252	3,735	5,987
India	2,783	1,584	4,367
China	1,565	561	2,126
Korea	460	290	750
Pakistan	612	92	704
Bangladesh	575	20	595
Sri Lanka	291	122	413
Israel	190	160	350
Singapore	193	142	335
Philippines	120	40	160
Taiwan	90	61	151
Malaysia	80	50	130
Hong Kong	61	41	102
Thailand	47	40	87
Lebanon	60	10	70
Saudi Arabia	30	10	40
Turkey	20	20	40
Other Asia	114	141	255
Oceania			
Australia	4,615	4,208	8,823
New Zealand	1,251	1,072	2,323
Pacific Islands	-	10	10
Not Stated	56,857	28,427	85,284
Total	1,102,651	717,406	1,820,057

Table 2: Total Arrivals by Purpose of Entry and Sex-2006

Entry Purpose	Male	Female	Total	Percent
Returning resident	104,627	57,070	161,697	8.9
Prospective resident	42,376	38,990	81,366	4.5
Seeking employment	10,155	3,863	14,018	0.8
Employment	43,116	29,625	72,741	4.0
Visitor	231,754	265,661	497,415	27.3
Holiday	166,127	88,376	254,503	14.0
Business	66,909	12,214	79,123	4.3
In transit	187,248	69,234	256,482	14.1
Diplomat	3,492	1,853	5,345	0.3
Student	2,136	1,271	3,407	0.2
Other	229,869	140,877	370,746	20.4
Not Stated	14,842	8,372	23,214	1.3
Total	1,102,651	717,406	1,820,057	100.0

Table 3: Total Arrivals by Purpose of Entry and Age - 2006

Entry Purpose	0-4	5-9	10-14	15-19	20-24	25-29	30-34	35-39	40-44	45-49	50-54	55-59	60-64	65+	Not Stated	Total
Returning resident	296	191	681	3,727	6,378	15,174	26,976	29,518	24,929	19,514	15,814	9,145	5,005	3,611	738	161,697
Prospective resident	454	182	438	2,354	9,631	14,651	14,531	11,574	7,875	6,262	4,805	3,363	2,081	2,820	345	81,366
Seeking employment	65	21	90	433	1,217	2,298	2,230	1,990	1,690	1,175	1,042	734	404	598	31	14,018
Employment	178	62	305	1,593	3,964	6,818	9,580	8,692	7,172	7,428	6,325	6,429	5,797	8,117	281	72,741
Visitor	1,430	397	1,485	11,843	69,915	102,328	101,260	69,315	44,451	32,220	24,966	13,559	8,708	13,345	2,193	497,415
Holiday	412	205	792	6,005	17,842	29,393	35,655	30,881	29,414	28,090	24,765	18,294	14,387	17,300	1,068	254,503
Business	170	3	72	581	3,979	9,551	14,440	12,425	9,740	9,926	8,690	5,084	2,533	1,747	182	79,123
In transit	666	153	695	6,588	19,779	33,499	45,756	41,561	32,544	26,289	20,094	12,496	7,240	8,027	1,095	256,482
Diplomat	20	-	21	170	323	634	781	787	714	616	662	242	182	182	11	5,345
Student	-	-	10	322	721	680	342	384	253	253	161	80	50	81	70	3,407
Other	934	459	1,313	7,146	27,563	51,180	60,832	52,748	43,431	40,527	33,843	20,726	12,879	15,637	1,528	370,746
Not Stated	47	1	112	444	2,055	3,565	4,252	3,692	2,344	2,634	1,625	1,208	515	567	153	23,214
Total	4,672	1,674	6,014	41,206	163,367	269,771	316,635	263,567	204,557	174,934	142,792	91,360	59,781	72,032	7,695	1,820,057
<i>Percent</i>	<i>0.3</i>	<i>0.1</i>	<i>0.3</i>	<i>2.3</i>	<i>9.0</i>	<i>14.8</i>	<i>17.4</i>	<i>14.5</i>	<i>11.2</i>	<i>9.6</i>	<i>7.8</i>	<i>5.0</i>	<i>3.3</i>	<i>4.0</i>	<i>0.4</i>	<i>100.0</i>

Table 4: Total arrivals by Country of residence and Purpose of Entry - 2006

Country of Residence	Returning resident	Prospective resident	Seeking employment	Employment	Visitor	Holiday	Business	In transit	Diplomat	Student	Other	Not Stated	Total
Africa													
South Africa	7,158	24,030	5,780	18,236	104,745	110,635	48,838	102,934	2,124	870	134,846	6,866	567,062
Zimbabwe	4,984	35,289	2,630	7,672	331,733	31,075	13,225	43,215	841	412	71,662	4,894	547,632
Botswana	141,631	3,235	374	9,918	11,602	3,083	2,194	1,070	905	653	49,280	4,734	228,679
Zambia	1,588	5,634	1,682	1,309	15,209	12,740	4,772	40,000	270	270	50,798	3,480	137,752
Namibia	396	2,270	1,171	1,036	8,064	5,261	1,722	46,381	101	90	14,722	692	81,906
Swaziland	84	260	30	402	711	936	320	581	20	30	822	20	4,216
Lesotho	110	311	60	180	1,232	534	312	320	10	120	968	31	4,188
Malawi	80	431	110	80	1,060	382	221	790	30	50	782	51	4,067
Kenya	170	413	80	180	644	385	243	212	20	80	522	-	2,949
Tanzania	81	120	60	60	501	235	154	310	40	10	320	-	1,891
Mozambique	20	110	83	100	225	260	110	141	40	-	453	10	1,552
Uganda	90	271	20	20	340	180	40	160	-	70	251	-	1,442
Nigeria	120	40	-	30	150	132	30	10	20	30	190	-	752
Mauritius	50	100	10	30	90	112	60	10	20	10	90	-	582
Angola	10	-	-	20	70	160	91	30	-	11	164	-	556
Zaire	10	40	-	60	40	110	50	50	-	-	90	20	470
Ghana	30	120	-	40	41	31	60	-	-	10	40	10	382
Egypt	20	-	-	31	50	121	10	-	-	-	83	-	315
Ethiopia	30	22	-	30	32	61	20	-	-	-	50	-	245
Seychelles	-	-	-	-	-	22	10	-	-	10	60	-	102
Sudan	10	10	-	10	-	10	-	-	-	-	30	-	70
Cameroon	-	-	-	20	10	1	-	-	-	-	20	-	51
Madagascar	-	-	-	-	-	-	-	20	10	-	20	-	50
Sierra Leone	-	-	-	-	20	-	-	-	10	10	1	-	41
Libya	-	-	-	20	-	-	-	-	20	-	-	-	40
Gabon	-	-	-	-	-	30	-	-	-	-	10	-	40
Somalia	-	-	-	-	-	-	-	10	10	-	20	-	40
Other Africa	10	10	-	13	70	92	20	30	40	20	50	1	356

Table 4: Total arrivals by Country of residence and Purpose of Entry – 2006 (cont'd)

America	Returning resident	Prospective resident	Seeking employment	Employment	Visitor	Holiday	Business	In transit	Diplomat	Student	Other	Not Stated	Total
USA	194	625	227	7,735	1,139	15,857	531	1,107	160	231	2,492	58	30,356
Canada	51	110	20	1,043	322	1,999	141	215	20	80	527	21	4,549
Brazil	-	-	1	5	20	166	-	50	10	-	33	-	285
Argentina	-	10	-	31	10	143	-	-	-	-	60	-	254
Mexico	-	-	-	31	1	113	-	-	-	-	22	1	168
Chile	-	-	-	2	-	110	-	20	-	-	-	-	132
Barbados	-	-	-	-	20	20	-	-	10	-	-	-	50
Cuba	-	-	-	20	20	-	-	-	-	-	10	-	50
Trinidad	-	-	-	10	-	-	-	-	-	-	40	-	50
Other America	20	10	-	81	20	110	21	10	10	-	22	-	304
Europe													
United Kingdom	547	870	155	2,930	1,848	14,610	1,358	1,091	60	70	2,356	67	25,962
Germany	161	212	214	3,797	403	7,489	92	1,433	50	30	1,617	65	15,563
Netherlands	40	92	12	2,547	128	6,309	103	375	-	-	1,278	22	10,906
France	21	81	10	1,262	82	3,813	143	339	22	10	902	62	6,747
Spain	10	-	2	784	31	2,652	30	152	2	-	468	-	4,131
Italy	64	60	40	875	111	1,978	64	208	10	10	605	33	4,058
Switzerland	14	14	101	953	92	1,638	21	173	20	-	290	22	3,338
Belgium Luxemburg	1	21	10	390	15	1,315	47	114	10	30	369	1	2,323
Ireland	11	44	10	244	43	819	42	42	-	-	113	21	1,389
Sweden	20	1	-	354	20	583	60	110	-	-	201	10	1,359
Denmark	10	21	24	294	30	618	12	103	10	-	108	-	1,230
Norway	12	80	20	183	30	544	70	100	10	30	124	10	1,213
Austria	-	21	-	243	30	481	11	100	-	-	160	-	1,046
Russia	-	10	-	163	50	352	-	40	70	-	240	-	925
Portugal	40	40	-	70	80	225	40	60	-	-	152	-	707
Czechoslovakia	10	10	-	74	10	199	10	40	-	-	143	-	496
Poland	-	20	-	90	30	170	20	-	-	-	50	-	380
Finland	-	30	-	81	51	150	1	2	-	-	31	-	346
Greece	-	-	-	73	20	103	-	11	-	-	41	-	248
Yugoslavia	20	70	10	30	30	40	-	10	-	-	30	-	240

Table 4: Total arrivals by Country of residence and Purpose of Entry – 2006 (cont'd)

Country of Residence	Returning resident	Prospective resident	Seeking employment	Employment	Visitor	Holiday	Business	In transit	Diplomat	Student	Other	Not Stated	Total
Europe													
Bulgaria	10	10	-	-	10	40	-	10	-	-	40	-	120
Ukraine	-	-	-	20	2	30	1	20	-	-	11	-	84
Hungary	-	-	-	1	-	70	-	10	-	-	-	-	81
Luxembourg	-	-	-	-	-	51	-	10	-	-	10	-	71
Slovakia	-	-	-	10	-	52	-	-	-	-	-	-	62
Croatia	-	10	-	20	10	-	10	-	-	-	10	-	60
Romania	-	-	-	-	-	40	1	-	-	-	10	-	51
Estonia	-	-	-	10	-	40	-	-	-	-	-	-	50
Other Europe	20	10	10	23	-	50	-	-	-	-	30	-	143
Asia													
Japan	-	121	20	1,430	50	3,326	40	70	20	-	860	50	5,987
India	620	551	110	510	750	552	220	-	50	20	953	31	4,367
China	90	100	50	200	191	592	170	2	50	10	671	-	2,126
Korea	10	-	-	190	20	370	-	20	-	-	130	10	750
Pakistan	52	101	10	30	141	80	30	20	-	-	240	-	704
Bangladesh	-	60	-	60	85	60	20	-	-	-	310	-	595
Sri Lanka	31	81	-	40	50	81	50	-	-	-	80	-	413
Israel	-	10	-	60	30	150	40	-	20	-	40	-	350
Singapore	30	20	-	50	50	104	40	1	-	-	40	-	335
Philippines	-	20	-	60	10	50	-	-	-	-	20	-	160
Taiwan	10	30	-	41	10	40	-	-	-	-	20	-	151
Malaysia	20	-	-	10	-	80	10	-	-	-	10	-	130
Hong Kong	-	-	-	-	10	61	21	-	-	-	10	-	102
Thailand	-	-	-	21	-	66	-	-	-	-	-	-	87
Lebanon	-	10	-	10	10	30	-	-	-	-	10	-	70
Saudi Arabia	-	-	-	-	-	20	-	20	-	-	-	-	40
Turkey	-	-	-	-	-	40	-	-	-	-	-	-	40
Other Asia	-	21	10	30	60	101	10	-	-	-	23	-	255

Table 4: Total arrivals by Country of residence and Purpose of Entry – 2006 (cont'd)

Country of Residence	Returning resident	Prospective resident	Seeking employment	Employ men	Visitor	Holiday	Business	In transit	Diplomat	Student	Other	Not Stated	Total
Oceania													
Australia	51	215	22	1,689	254	4,981	335	516	20	10	676	54	8,823
New Zealand	32	20	12	541	71	1,181	71	154	-	-	241	-	2,323
Pacific Islands	-	-	-	-	10	-	-	-	-	-	-	-	10
Not Stated	2,793	4,808	828	3,793	14,266	12,971	2,735	13,450	180	120	27,473	1,867	85,284
Total	161,697	81,366	14,018	72,741	497,415	254,503	79,123	256,482	5,345	3,407	370,746	23,214	1,820,057

Table 5: Total Arrivals by Country of Residence and Month of Arrival - 2006

Country of Residence	January	February	March	April	May	June	July	August	September	October	November	December	Total
Africa													
South Africa	42,676	26,498	58,881	46,432	35,845	44,023	47,699	48,022	61,834	46,250	42,826	66,076	567,062
Zimbabwe	59,823	10,022	32,400	26,065	37,610	54,300	53,846	52,250	69,256	22,874	60,722	68,464	547,632
Botswana	33,785	10,987	26,635	19,256	19,353	8,311	17,005	24,328	14,998	18,300	19,902	15,819	228,679
Zambia	14,705	12,765	15,070	13,324	5,402	7,263	8,992	8,221	18,141	17,739	8,264	7,866	137,752
Namibia	6,237	4,799	6,814	7,636	6,168	5,896	7,472	6,834	7,158	5,641	6,988	10,263	81,906
Swaziland	171	71	394	340	1,030	281	341	390	380	272	176	370	4,216
Lesotho	291	90	480	271	262	281	294	281	540	531	393	474	4,188
Malawi	450	260	350	300	152	321	402	230	622	270	190	520	4,067
Kenya	321	260	270	222	130	333	198	190	432	190	183	220	2,949
Tanzania	152	60	220	144	60	222	251	150	152	230	120	130	1,891
Mozambique	70	21	221	50	71	150	156	120	160	123	140	270	1,552
Uganda	70	110	140	110	60	171	110	101	240	190	70	70	1,442
Nigeria	40	10	21	40	40	90	150	60	80	80	40	101	752
Mauritius	51	10	30	70	50	90	60	70	60	50	10	31	582
Angola	52	30	32	52	10	50	80	20	90	70	20	50	556
Zaire	10	10	90	10	10	70	50	70	60	10	40	40	470
Ghana	20	-	30	30	-	81	71	10	80	-	30	30	382
Egypt	60	20	70	20	30	-	50	-	10	55	-	-	315
Ethiopia	40	-	-	10	-	40	40	50	20	30	10	5	245
Seychelles	-	40	-	10	-	10	20	-	2	20	-	-	102
Sudan	-	-	10	-	-	20	-	10	10	-	-	20	70
Cameroon	-	-	10	-	1	-	-	-	40	-	-	-	51
Madagascar	10	10	-	-	10	-	-	-	-	-	20	-	50
Sierra Leone	-	-	20	-	-	-	1	-	20	-	-	-	41
Libya	-	10	-	10	-	-	-	10	-	10	-	-	40
Gabon	-	-	20	-	-	-	10	-	10	-	-	-	40
Somalia	10	-	-	-	10	10	-	-	-	10	-	-	40
Other Africa	11	10	31	-	30	60	71	20	50	21	12	40	356

Table 5: Total Arrivals by Country of Residence and Month of Arrival – 2006 (cont'd)

Country of Residence	January	February	March	April	May	June	July	August	September	October	November	December	Total
America													
USA	1,608	1,271	2,432	1,756	2,188	3,061	4,114	2,612	4,181	3,226	2,034	1,873	30,356
Canada	330	393	480	278	408	245	408	294	645	416	415	237	4,549
Brazil	40	50	31	10	3	-	30	42	10	29	30	10	285
Argentina	20	-	30	10	1	20	31	40	60	32	-	10	254
Mexico	4	1	21	-	10	-	60	12	10	30	10	10	168
Chile	-	20	30	32	40	-	-	10	-	-	-	-	132
Barbados	-	-	-	10	-	-	-	10	10	10	-	10	50
Cuba	-	-	-	30	-	-	-	-	-	-	20	-	50
Trinidad	-	-	10	-	10	20	-	10	-	-	-	-	50
Other America	20	20	40	20	20	10	101	20	-	32	21	-	304
Europe													
United Kingdom	1,863	1,543	2,520	1,890	1,448	2,123	2,778	2,334	3,046	2,963	1,944	1,510	25,962
Germany	942	726	1,128	904	842	973	1,065	1,456	2,366	2,319	1,722	1,120	15,563
Netherlands	619	433	428	430	540	362	2,284	1,241	1,270	1,677	906	716	10,906
France	273	311	686	556	670	193	800	1,002	583	983	368	322	6,747
Spain	31	40	141	160	70	90	822	1,624	430	397	184	142	4,131
Italy	417	167	142	227	229	210	264	966	485	680	85	186	4,058
Switzerland	116	164	296	218	276	90	387	232	444	573	381	161	3,338
Belgium Luxemburg	193	88	144	244	166	59	545	147	197	238	201	101	2,323
Ireland	42	50	213	122	81	104	146	80	135	210	83	123	1,389
Sweden	111	153	212	114	40	60	100	40	62	133	144	190	1,359
Denmark	50	243	164	44	31	50	119	21	101	221	86	100	1,230
Norway	111	140	161	72	10	130	100	53	72	140	130	94	1,213
Austria	84	91	80	20	112	72	131	90	132	101	133	-	1,046
Russia	220	42	20	20	60	70	60	62	120	81	140	30	925
Portugal	50	24	80	30	20	80	130	92	90	31	40	40	707
Czechoslovakia	11	-	10	52	25	33	100	10	71	132	40	12	496
Poland	50	20	10	60	-	70	-	30	70	30	30	10	380
Finland	30	30	32	22	20	44	10	-	51	60	27	20	346

Table 5: Total Arrivals by Country of Residence and Month of Arrival – 2006 (cont'd)

Country of Residence	January	February	March	April	May	June	July	August	September	October	November	December	Total
Europe													
Greece	21	30	10	42	-	10	10	50	2	20	12	41	248
Yugoslavia	10	-	10	-	20	40	70	10	60	10	-	10	240
Bulgaria	-	10	10	40	-	20	20	-	10	-	10	-	120
Ukraine	32	-	10	-	-	10	2	-	-	20	10	-	84
Hungary	-	10	10	-	-	-	1	-	10	-	50	-	81
Luxembourg	-	-	-	-	10	-	-	20	20	10	1	10	71
Slovakia	-	-	10	2	-	-	-	-	30	-	20	-	62
Croatia	-	20	10	-	-	-	10	-	-	20	-	-	60
Romania	-	-	-	-	-	-	1	40	-	-	10	-	51
Estonia	-	-	-	20	-	-	10	-	-	20	-	-	50
Other Europe	-	10	-	10	-	-	50	20	10	23	20	-	143
Asia													
Japan	410	200	360	290	610	57	160	70	1,300	1,850	460	220	5,987
India	281	71	131	150	271	1,120	710	150	530	212	171	570	4,367
China	50	71	180	91	180	270	370	172	242	140	120	240	2,126
Korea	10	130	60	20	50	40	80	50	80	160	30	40	750
Pakistan	50	-	42	20	60	180	141	30	90	50	20	21	704
Bangladesh	1	20	10	20	30	180	30	50	74	130	10	40	595
Sri Lanka	30	-	80	20	-	71	21	10	41	30	50	60	413
Israel	50	10	-	60	10	10	70	10	50	30	10	40	350
Singapore	40	30	21	40	-	41	30	30	50	42	-	11	335
Philippines	10	20	20	-	10	50	20	10	-	-	20	-	160
Taiwan	-	10	10	10	-	10	10	-	50	-	40	11	151
Malaysia	-	-	10	10	20	-	60	10	10	-	-	10	130
Hong Kong	20	-	10	-	-	-	10	20	20	10	12	-	102
Thailand	-	42	-	-	4	-	1	-	10	-	30	-	87
Lebanon	-	-	10	10	-	10	10	10	20	-	-	-	70
Saudi Arabia	-	-	-	-	-	30	10	-	-	-	-	-	40
Turkey	-	-	-	-	-	-	-	40	-	-	-	-	40
Other Asia	-	21	10	30	11	1	20	50	20	10	11	71	255

Table 5: Total Arrivals by Country of Residence and Month of Arrival – 2006 (cont'd)

Country of Residence	January	February	March	April	May	June	July	August	September	October	November	December	Total
Oceania													
Australia	542	635	759	661	674	427	830	687	1,384	1,098	544	582	8,823
New Zealand	241	210	184	134	160	100	161	162	436	212	183	140	2,323
Pacific Islands	-	-	-	-	-	-	-	-	10	-	-	-	10
Not Stated	3,431	6,251	12,239	9,593	7,291	2,094	2,871	9,862	9,699	9,162	8,986	3,805	85,284
Total	171,519	79,914	165,986	133,006	123,065	135,013	157,743	165,530	203,344	140,969	160,160	183,808	1,820,057

Table 6: Total Arrivals by Country of Residence and Border Post - 2006

Country of Residence	Tlokweg	Sir Seretse khama Air	Parrshalt	Mamono	Sikwane	Ramotswa	Francis town air	Ramokgwe bana road	Kazungula road	Maun	Mohembo	Plaatjan
Africa												
South Africa	122,800	24,020	13,570	23,030	13,920	16,670	2,037	26,040	14,350	3,330	3,880	8,520
Zimbabwe	8,020	2,500	1,040	6,850	370	520	99	421,980	18,960	180	600	100
Botswana	49,280	15,710	2,760	2,140	1,860	9,070	315	61,740	7,110	1,290	470	2,020
Zambia	4,660	1,070	40	160	40	40	51	1,920	3,650	-	120	-
Namibia	830	640	40	29,000	70	30	10	850	2,350	130	3,070	-
Swaziland	2,640	270	-	250	10	10	6	30	20	-	-	-
Lesotho	2,470	310	-	-	40	60	2	150	30	-	-	-
Malawi	940	350	-	120	30	30	-	970	30	10	10	10
Kenya	420	680	-	80	-	30	4	120	110	30	50	-
Tanzania	180	530	10	60	-	-	1	100	40	10	-	-
Mozambique	480	460	-	40	-	-	2	50	40	10	-	-
Uganda	200	290	-	30	-	-	1	60	20	-	-	-
Nigeria	110	480	-	40	-	-	-	20	10	20	10	-
Mauritius	150	280	-	-	-	10	1	-	10	10	-	-
Angola	60	280	-	20	-	-	-	10	20	50	40	-
Zaire	110	140	-	20	-	-	-	10	10	-	-	-
Ghana	70	200	-	10	-	10	2	30	-	10	-	-
Egypt	30	200	-	-	-	-	-	-	20	20	-	-
Ethiopia	-	170	10	-	-	-	4	10	-	-	-	-
Seychelles	30	40	-	-	-	-	-	-	-	-	-	-
Sudan	10	50	-	-	-	-	-	10	-	-	-	-
Cameroon	-	50	-	-	-	-	-	-	-	-	-	-
Madagascar	10	40	-	-	-	-	-	-	-	-	-	-
Sierra Leone	-	40	-	-	-	-	1	-	-	-	-	-
Libya	10	10	-	-	-	-	-	-	10	-	-	-
Gabon	-	10	-	-	-	-	-	-	-	-	10	-
Somalia	-	20	-	-	-	-	-	-	-	-	-	-
Other Africa	20	220	-	-	-	-	-	-	20	10	-	-

Table 6: Total Arrivals by Country of Residence and Border Post – 2006 (cont'd)

Country of Residence	Tlokweg	Sir Seretse khama Air	Parrshalt	Mamono	Sikwane	Ramotswa	Francis town air	Ramokgwe bana road	Kazungula road	Maun	Mohembo	Plaatjan
America												
USA	1,520	3,620	60	330	60	40	79	200	5,300	6,570	670	110
Canada	270	660	-	210	20	40	44	40	650	640	430	-
Brazil	20	110	-	30	-	-	1	-	10	30	20	-
Argentina	10	10	-	10	-	-	-	-	20	40	30	-
Mexico	10	-	-	-	-	-	2	-	30	70	-	-
Chile	-	-	-	-	-	-	-	-	30	30	30	-
Barbados	10	30	-	-	-	-	-	-	10	-	-	-
Cuba	-	50	-	-	-	-	-	-	-	-	-	-
Trinidad	-	10	-	10	-	-	-	-	-	-	-	-
Other America	-	60	-	-	-	10	1	20	50	40	-	-
Europe												
United Kingdom	1,880	4,210	80	890	90	320	121	480	2,100	3,340	1,140	390
Germany	430	690	10	1,730	30	40	17	140	2,300	1,240	1,700	270
Netherlands	230	280	10	500	40	30	3	60	1,000	540	2,730	60
France	120	550	-	260	10	10	8	10	1,400	950	680	20
Spain	40	150	-	140	30	20	-	20	580	390	1,040	-
Italy	200	280	40	140	-	40	5	10	700	640	150	-
Switzerland	40	240	-	230	-	-	4	20	370	640	430	30
Belgium Luxemburg	100	170	-	40	-	-	5	-	330	240	450	-
Ireland	100	230	-	50	-	-	13	20	190	90	50	10
Sweden	120	260	-	90	-	30	1	10	230	40	100	30
Denmark	30	120	-	30	-	-	5	10	80	150	60	50
Norway	60	260	-	80	-	-	1	10	110	120	90	10
Austria	40	40	-	60	10	20	3	-	130	130	140	-
Russia	130	30	-	40	-	-	1	10	50	90	10	-
Portugal	150	90	-	30	-	20	2	-	40	80	-	-
Czechoslovakia	20	50	-	20	-	20	1	20	60	60	30	-

Table 6: Total Arrivals by Country of Residence and Border Post – 2006 (cont'd)

Country of Residence	Tlokweng	Sir Seretse khama Air	Parrshalt	Mamono	Sikwane	Ramotswa	Francis town air	Ramokgwe bana road	Kazungula road	Maun	Mohembo	Plaatjan
Europe												
Poland	30	10	-	30	-	-	-	-	100	40	40	-
Finland	-	100	20	30	-	-	2	-	40	40	-	-
Greece	20	20	-	-	-	-	-	-	50	30	10	-
Yugoslavia	70	90	-	-	-	10	-	-	30	-	-	-
Bulgaria	30	30	-	-	-	-	-	10	-	-	-	-
Ukraine	10	10	-	20	-	-	-	-	-	-	-	-
Hungary	-	-	-	-	-	-	-	-	-	-	20	-
Luxembourg	-	-	-	-	-	-	1	-	20	10	-	-
Slovakia	-	-	-	-	-	-	-	-	10	-	-	-
Croatia	20	20	-	-	-	-	-	-	20	-	-	-
Romania	-	20	-	-	-	-	-	-	-	-	-	-
Estonia	-	-	-	-	-	-	-	-	-	-	10	-
Other Europe	20	30	-	10	-	-	-	-	20	20	10	-
Asia												
Japan	40	180	-	40	-	-	-	10	5,170	110	10	-
India	1,020	2,170	-	40	10	100	3	180	40	70	60	-
China	270	1,080	-	40	-	120	-	20	290	40	20	10
Korea	30	40	-	20	-	20	-	-	280	10	100	-
Pakistan	180	390	-	-	-	10	4	-	-	10	-	-
Bangladesh	10	360	-	10	10	-	5	50	-	10	-	-
Sri Lanka	80	240	-	-	-	-	2	10	-	-	-	-
Israel	40	140	-	20	-	-	-	10	50	-	40	-
Singapore	70	80	10	10	10	-	-	20	30	20	-	-
Philippines	10	100	-	-	-	-	-	-	-	20	-	-
Taiwan	-	30	-	-	-	-	-	10	80	10	-	-

Table 6: Total Arrivals by Country of Residence and Border Post – 2006 (cont'd)

Country of Residence	Tlokweg	Sir Seretse khama Air	Parrshalt	Mamono	Sikwane	Ramotswa	Francis town air	Ramokgwe bana road	Kazungula road	Maun	Mohembo	Plaatjan
Asia												
Malaysia	20	70	-	-	-	-	-	-	10	-	-	-
Hong Kong	-	50	-	10	-	-	-	-	10	10	-	-
Thailand	10	30	-	-	-	-	4	-	-	-	-	-
Lebanon	-	50	-	-	-	-	-	-	20	-	-	-
Saudi Arabia	-	20	-	-	-	-	-	-	-	10	10	-
Turkey	-	-	-	-	-	-	-	-	-	-	-	-
Other Asia	60	70	10	-	10	-	3	-	30	30	10	-
Oceania												
Australia	300	870	10	290	10	20	89	80	1,660	980	750	60
New Zealand	100	170	-	130	-	20	1	30	370	250	140	30
Pacific Islands	-	10	-	-	-	-	-	-	-	-	-	-
Not Stated	13,800	2,360	590	860	1,950	790	97	8,680	4,020	690	550	180
Total	215,300	70,100	18,310	68,330	18,630	28,210	3,064	524,290	74,930	23,680	20,020	11,910

Table 6: Total Arrivals by Country of Residence and Border Post - 2006 (cont'd)

Country of Residence	Point Drift	Ngoma	Selibe Phikwe	Zanzibar	Makopong	Martins Drift	Orapa	Panda matenge	Kazungula ferry	Kasane air	Sowa Air	Phitshane Molopo
Africa												
South Africa	5,740	5,380	273	1,486	880	62,700	481	871	11,200	362	570	19,670
Zimbabwe	60	5,640	13	41	-	5,280	18	325	1,770	27	5	150
Botswana	720	470	83	596	106	15,000	75	147	12,640	248	132	1,350
Zambia	20	810	1	7	-	27,980	12	9	93,600	8	-	20
Namibia	-	10,160	26	6	8	660	3	6	680	66	-	20
Swaziland	-	-	-	-	-	250	-	-	70	3	1	10
Lesotho	-	-	-	1	4	60	-	1	120	-	1	-
Malawi	10	20	-	-	-	310	2	-	650	-	2	-
Kenya	-	-	3	-	-	100	-	7	1,030	1	-	-
Tanzania	-	10	-	1	-	180	1	4	700	4	-	-
Mozambique	-	10	-	-	-	280	-	2	20	3	-	-
Uganda	10	-	-	-	-	30	-	-	750	-	-	-
Nigeria	-	-	-	-	-	10	-	-	-	-	-	10
Mauritius	-	-	-	-	-	50	-	-	-	-	-	-
Angola	-	10	-	-	-	-	1	2	40	3	-	-
Zaire	-	-	-	-	-	80	-	-	70	-	-	-
Ghana	-	10	-	-	-	-	-	-	20	-	-	-
Egypt	-	-	-	-	-	-	-	-	40	5	-	-
Ethiopia	-	-	-	-	-	-	-	-	30	1	-	-
Seychelles	-	-	-	-	-	-	-	-	30	2	-	-
Sudan	-	-	-	-	-	-	-	-	-	-	-	-
Cameroon	-	-	-	-	-	-	-	-	-	-	-	-
Madagascar	-	-	-	-	-	-	-	-	-	-	-	-
Sierra Leone	-	-	-	-	-	-	-	-	-	-	-	-
Libya	-	-	-	-	-	10	-	-	-	-	-	-
Gabon	-	-	-	-	-	-	-	-	20	-	-	-
Somalia	-	-	-	-	-	10	-	-	-	-	-	-
Other Africa	-	-	-	-	-	40	1	-	40	2	-	-

Table 6: Total Arrivals by Country of Residence and Border Post - 2006 (cont'd)

Country of Residence	Point Drift	Ngoma	Selibe Phikwe	Zanzibar	Makopong	Martins Drift	Orapa	Panda matenge	Kazungula ferry	Kasane Air	Sowa Air	Phitshane Molopo
America												
USA	270	1,040	5	18	8	820	4	59	5,390	539	-	-
Canada	60	130	1	-	-	150	3	11	930	41	-	10
Brazil	-	-	-	2	-	-	-	-	30	10	-	-
Argentina	-	50	-	-	-	-	-	-	60	-	-	-
Mexico	-	30	-	-	-	10	-	-	10	6	-	-
Chile	-	-	-	-	-	20	-	2	20	-	-	-
Barbados	-	-	-	-	-	-	-	-	-	-	-	-
Cuba	-	-	-	-	-	-	-	-	-	-	-	-
Trinidad	-	-	-	-	-	-	-	-	-	-	-	-
Other America	-	20	2	-	-	10	-	-	80	1	-	-
Europe												
United Kingdom	480	820	21	20	-	1,140	16	52	5,820	211	8	-
Germany	330	1,870	1	11	5	1,030	5	66	1,770	74	2	-
Netherlands	350	2,530	13	28	1	450	-	35	1,420	49	-	-
France	150	530	1	2	-	210	2	29	1,380	28	-	-
Spain	-	1,250	4	-	-	70	-	10	260	24	-	-
Italy	140	160	-	-	-	130	8	4	900	24	-	-
Switzerland	70	290	-	-	-	220	-	12	390	40	1	-
Belgium Luxemburg	140	180	4	3	-	100	-	19	360	8	-	-
Ireland	20	40	-	-	-	70	2	10	410	14	1	-
Sweden	10	30	-	-	-	40	-	5	260	5	-	-
Denmark	140	30	-	2	-	30	-	4	180	92	-	-
Norway	30	60	-	-	-	100	-	5	140	3	-	-
Austria	-	120	-	-	-	110	-	-	120	7	2	-
Russia	10	30	-	-	-	20	-	-	500	2	-	-
Portugal	-	10	-	-	-	50	-	-	80	-	-	10
Czechoslovakia	-	40	-	-	-	30	-	-	130	7	-	-
Poland	-	-	-	-	-	30	-	-	40	-	-	-
Finland	-	10	-	11	-	10	-	3	50	-	-	-

Table 6: Total Arrivals by Country of Residence and Border Post - 2006 (cont'd)

Country of Residence	Point Drift	Ngoma	Selibe Phikwe	Zanzibar	Makopong	Martins Drift	Orapa	Panda matenge	Kazungula ferry	Kasane air	Sowa Air	Phitshane Molopo
Europe												
Greece	10	20	-	-	-	-	-	2	20	5	-	-
Yugoslavia	-	-	-	-	-	-	-	-	10	-	-	-
Bulgaria	-	-	-	-	-	-	-	-	40	-	-	-
Ukraine	-	-	2	-	-	-	2	-	40	-	-	-
Hungary	-	-	-	-	-	-	-	-	40	-	-	-
Luxembourg	-	10	-	-	-	30	-	-	-	-	-	-
Slovakia	-	20	-	-	-	10	-	2	20	-	-	-
Croatia	-	-	-	-	-	-	-	-	-	-	-	-
Romania	-	30	-	-	-	-	1	-	-	-	-	-
Estonia	-	20	-	-	-	-	-	-	-	-	-	-
Other Europe	-	-	-	-	-	10	-	-	10	3	-	-
Asia												
Japan	-	10	-	-	-	-	-	-	370	-	-	-
India	-	-	-	-	-	140	2	-	70	2	-	-
China	-	40	-	1	-	30	-	-	90	4	-	-
Korea	-	70	-	-	-	40	-	-	40	-	-	-
Pakistan	-	-	-	-	-	20	-	-	20	-	-	-
Bangladesh	-	-	-	-	-	-	-	-	20	-	-	-
Sri Lanka	-	10	-	-	-	10	-	1	40	-	-	-
Israel	-	-	-	-	-	10	-	-	20	-	-	-
Singapore	10	-	-	-	-	10	-	-	30	3	-	-
Philippines	-	-	-	-	-	10	-	-	20	-	-	-
Taiwan	-	-	-	-	-	-	-	-	-	1	-	-
Malaysia	-	-	-	-	-	10	-	-	20	-	-	-
Hong Kong	-	-	-	-	-	10	-	2	-	-	-	-
Thailand	-	-	-	-	-	-	-	-	40	-	-	-
Lebanon	-	-	-	-	-	-	-	-	-	-	-	-
Saudi Arabia	-	-	-	-	-	-	-	-	-	-	-	-

Table 6: Total Arrivals by Country of Residence and Border Post - 2006 (cont'd)

Country of Residence	Point Drift	Ngoma	Selibe Phikwe	Zanzibar	Makopong	Martins Drift	Orapa	Panda matenge	Kazungula ferry	Kasane airport	Sowa airport	Phitshane Molopo
Asia												
Turkey	-	-	-	-	-	-	-	-	40	-	-	-
Other Asia	-	-	-	-	-	10	-	-	10	2	-	-
Oceania												
Australia	50	330	7	4	-	950	-	36	1,760	54	5	-
New Zealand	30	120	-	2	-	270	-	4	530	11	-	-
Pacific Islands	-	-	-	-	-	-	-	-	-	-	-	-
Not Stated	350	1,560	33	82	44	14,100	34	88	12,080	82	37	1,410
Total	9,210	34,030	493	2,324	1,056	133,550	673	1,835	159,630	2,087	767	22,660

Table 6: Total Arrivals by Country of Residence and Border Post - 2006 (cont'd)

Country of Residence	Bray	Ramatlabama road	Pioneer gate	Ghanzi	Jwaneng	Bokspits	Boshhoek	Tsabong	Kasane	Ramokgwe bana rail	Maitengwe	Matsiloje
Africa												
South Africa	2,908	91,880	70,770	107	132	2,368	84	2,602	1,450	110	2,340	5,980
Zimbabwe	4	3,430	1,670	1	1	3	-	7	270	37,000	12,990	17,450
Botswana	1,311	21,320	17,090	-	35	198	1	293	520	900	410	1,000
Zambia	6	1,240	1,230	4	-	4	-	4	790	230	-	20
Namibia	33	3,050	15,530	8	1	91	-	12	13,780	10	-	10
Swaziland	1	200	420	-	1	-	-	2	20	-	-	-
Lesotho	3	580	340	-	-	3	-	3	-	-	-	10
Malawi	-	350	160	-	-	-	-	1	-	60	-	-
Kenya	4	160	50	-	-	-	-	-	10	60	-	-
Tanzania	-	40	20	-	-	-	-	-	-	-	-	-
Mozambique	-	30	110	-	-	-	-	1	-	10	-	-
Uganda	-	30	20	-	-	-	-	1	-	-	-	-
Nigeria	-	10	30	-	-	-	-	1	-	-	-	-
Mauritius	-	10	60	-	-	-	-	-	-	-	-	-
Angola	-	10	10	-	-	-	-	-	-	-	-	-
Zaire	-	-	30	-	-	-	-	-	-	-	-	-
Ghana	-	20	-	-	-	-	-	-	-	-	-	-
Egypt	-	-	-	-	-	-	-	-	-	-	-	-
Ethiopia	-	20	-	-	-	-	-	-	-	-	-	-
Seychelles	-	-	-	-	-	-	-	-	-	-	-	-
Sudan	-	-	-	-	-	-	-	-	-	-	-	-
Cameroon	-	-	-	-	-	-	-	-	-	-	-	-
Madagascar	-	-	-	-	-	-	-	-	-	-	-	-
Sierra Leone	-	-	-	-	-	-	-	-	-	-	-	-
Libya	-	-	-	-	-	-	-	-	-	-	-	-
Gabon	-	-	-	-	-	-	-	-	-	-	-	-
Somalia	-	-	10	-	-	-	-	-	-	-	-	-
Other Africa	-	-	-	-	-	-	-	-	-	-	-	-

Table 6: Total Arrivals by Country of Residence and Border Post - 2006 (cont'd)

Country of Residence	Bray	Ramatlabama road	Pioneer gate	Ghanzi	Jwaneng	Bokspits	Boshoek	Tsabong	Kasane	Ramokgwe bana rail	Maitengwe	Matsiloje
America												
USA	3	270	410	1	3	1	-	6	790	-	-	-
Canada	3	50	50	-	-	-	-	1	40	-	-	20
Brazil	-	-	-	-	-	-	-	-	20	-	-	-
Argentina	-	20	-	-	-	-	-	-	-	-	-	-
Mexico	-	-	-	-	-	-	-	-	-	-	-	-
Chile	-	-	-	-	-	-	-	-	-	-	-	-
Barbados	-	-	-	-	-	-	-	-	-	-	-	-
Cuba	-	-	-	-	-	-	-	-	-	-	-	-
Trinidad	-	20	10	-	-	-	-	-	-	-	-	-
Other America	-	-	10	-	-	-	-	-	-	-	-	-
Europe												
United Kingdom	32	500	580	11	1	17	-	16	900	20	-	10
Germany	4	260	390	1	3	43	-	24	800	-	-	-
Netherlands	-	30	200	-	1	15	-	11	150	20	-	-
France	-	60	80	-	-	-	-	12	190	-	-	-
Spain	-	-	40	-	-	5	-	2	50	-	-	-
Italy	-	30	160	1	-	34	-	6	180	-	-	-
Switzerland	-	10	60	-	2	1	-	5	110	-	-	-
Belgium Luxemburg	-	10	50	-	-	3	-	6	50	-	-	-
Ireland	1	10	-	-	-	-	-	2	50	-	-	-
Sweden	-	10	60	-	-	-	-	-	20	-	-	-
Denmark	-	10	30	-	-	-	-	-	170	-	-	-
Norway	-	20	30	-	-	-	-	-	80	-	-	-
Austria	-	20	30	2	-	2	-	-	50	-	-	-
Russia	-	-	-	-	-	-	-	-	-	-	-	-
Portugal	-	10	60	-	-	-	-	-	70	-	-	-
Czechoslovakia	-	-	-	-	-	2	-	-	-	-	-	-
Poland	-	20	40	-	-	-	-	-	-	-	-	-

Table 6: Total Arrivals by Country of Residence and Border Post - 2006 (cont'd)

Country of Residence	Bray	Ramatlabama road	Pioneer gate	Ghanzi	Jwaneng	Bokspits	Boshoek	Tsabong	Kasane	Ramokgwe banarail	Maitengwe	Matsiloje
Europe												
Finland	-	-	10	-	-	-	-	-	20	-	-	-
Greece	1	30	30	-	-	-	-	-	-	-	-	-
Yugoslavia	-	-	20	-	-	-	-	-	10	-	-	-
Bulgaria	-	-	10	-	-	-	-	-	-	-	-	-
Ukraine	-	-	-	-	-	-	-	-	-	-	-	-
Hungary	-	-	10	-	-	-	-	-	10	-	-	-
Luxembourg	-	-	-	-	-	-	-	-	-	-	-	-
Slovakia	-	-	-	-	-	-	-	-	-	-	-	-
Croatia	-	-	-	-	-	-	-	-	-	-	-	-
Romania	-	-	-	-	-	-	-	-	-	-	-	-
Estonia	-	-	20	-	-	-	-	-	-	-	-	-
Other Europe	-	-	10	-	-	-	-	-	-	-	-	-
Asia												
Japan	-	10	10	-	-	-	-	-	20	-	-	-
India	-	260	190	-	-	-	-	-	10	-	-	-
China	-	40	30	-	-	-	-	-	-	-	-	-
Korea	-	10	10	-	-	-	-	-	80	-	-	-
Pakistan	-	10	60	-	-	-	-	-	-	-	-	-
Bangladesh	-	40	80	-	-	-	-	-	-	-	-	-
Sri Lanka	-	10	10	-	-	-	-	-	-	-	-	-
Israel	-	-	20	-	-	-	-	-	-	-	-	-
Singapore	-	-	30	-	-	-	-	2	-	-	-	-

Table 6: Total Arrivals by Country of Residence and Border Post - 2006 (cont'd)

Country of Residence	Bray	Ramatlabama road	Pioneer gate	Ghanzi	Jwaneng	Bokspits	Boshoek	Tsabong	Kasane	Ramokgwe bana rail	Maitengwe	Matsiloje
Asia												
Philippines	-	-	-	-	-	-	-	-	-	-	-	-
Taiwan	-	20	-	-	-	-	-	-	-	-	-	-
Malaysia	-	-	-	-	-	-	-	-	-	-	-	-
Hong Kong	-	-	10	-	-	-	-	-	-	-	-	-
Thailand	-	-	-	-	-	-	-	-	-	-	-	-
Lebanon	-	-	-	-	-	-	-	-	-	-	-	-
Saudi Arabia	-	-	-	-	-	-	-	-	-	-	-	-
Turkey	-	-	-	-	-	-	-	-	-	-	-	-
Other Asia	-	-	10	-	-	-	-	-	-	-	-	-
Oceania												
Australia	3	50	160	1	1	1	-	1	210	10	-	10
New Zealand	2	10	50	-	-	-	1	1	50	-	-	-
Pacific Islands	-	-	-	-	-	-	-	-	-	-	-	-
Not Stated	295	6,090	6,920	3	7	386	2	9	540	2,120	2,040	1,590
Total	4,614	130,320	117,540	140	188	3,177	88	3,031	21,510	40,550	17,780	26,100

Table 6: Total Arrivals by Country of Residence and Border Post - 2006 (cont'd)

Country of Residence	Middlepits	Two rivers	Limpopo valley	Dobe	Kwando	Shakawe	Total
Africa							
South Africa	2,155	1,671	373	60	32	260	567,062
Zimbabwe	3	2	12	21	210	10	547,632
Botswana	196	27	4	24	8	10	228,679
Zambia	2	-	4	-	-	-	137,752
Namibia	7	39	1	647	32	-	81,906
Swaziland	-	2	-	-	-	-	4,216
Lesotho	-	-	-	-	-	-	4,188
Malawi	-	-	-	2	-	-	4,067
Kenya	-	-	-	-	-	-	2,949
Tanzania	-	-	-	-	-	-	1,891
Mozambique	4	-	-	-	-	-	1,552
Uganda	-	-	-	-	-	-	1,442
Nigeria	-	-	1	-	-	-	752
Mauritius	-	-	-	-	1	-	582
Angola	-	-	-	-	-	-	556
Zaire	-	-	-	-	-	-	470
Ghana	-	-	-	-	-	-	382
Egypt	-	-	-	-	-	-	315
Ethiopia	-	-	-	-	-	-	245
Seychelles	-	-	-	-	-	-	102
Sudan	-	-	-	-	-	-	70
Cameroon	-	-	1	-	-	-	51
Madagascar	-	-	-	-	-	-	50
Sierra Leone	-	-	-	-	-	-	41
Libya	-	-	-	-	-	-	40
Gabon	-	-	-	-	-	-	40
Somalia	-	-	-	-	-	-	40
Other Africa	-	1	-	-	2	-	356

Table 6: Total Arrivals by Country of Residence and Border Post - 2006 (cont'd)

Country of Residence	Middlepits	Two rivers	Limpopo valley	Dobe	Kwando	Shakawe	Total
America							
USA	-	13	236	197	1,704	10	30,356
Canada	-	6	19	15	5	-	4,549
Brazil	-	-	2	-	-	-	285
Argentina	-	1	2	-	1	-	254
Mexico	-	-	-	-	-	-	168
Chile	-	-	-	-	-	-	132
Barbados	-	-	-	-	-	-	50
Cuba	-	-	-	-	-	-	50
Trinidad	-	-	-	-	-	-	50
Other America	-	-	-	-	-	-	304
Europe							
United Kingdom	2	30	143	56	15	-	25,962
Germany	14	103	35	79	46	-	15,563
Netherlands	3	55	14	28	20	-	10,906
France	-	20	6	20	9	-	6,747
Spain	-	-	5	1	-	-	4,131
Italy	-	38	7	17	14	-	4,058
Switzerland	-	25	43	46	9	-	3,338
Belgium Luxemburg	-	12	9	31	3	-	2,323
Ireland	-	-	2	1	3	-	1,389
Sweden	-	-	7	1	-	-	1,359
Denmark	-	-	1	2	4	-	1,230
Norway	-	-	-	4	-	-	1,213
Austria	-	6	2	2	-	-	1,046
Russia	-	-	-	2	-	-	925
Portugal	-	-	-	1	4	-	707
Czechoslovakia	-	-	-	4	2	-	496
Poland	-	-	-	-	-	-	380

Table 6: Total Arrivals by Country of Residence and Border Post - 2006 (cont'd)

Country of Residence	Middlepits	Two rivers	Limpopo valley	Dobe	Kwando	Shakawe	Total
Europe							
Finland	-	-	-	-	-	-	346
Greece	-	-	-	-	-	-	248
Yugoslavia	-	-	-	-	-	-	240
Bulgaria	-	-	-	-	-	-	120
Ukraine	-	-	-	-	-	-	84
Hungary	-	-	1	-	-	-	81
Luxembourg	-	-	-	-	-	-	71
Slovakia	-	-	-	-	-	-	62
Croatia	-	-	-	-	-	-	60
Romania	-	-	-	-	-	-	51
Estonia	-	-	-	-	-	-	50
Other Europe	-	-	-	-	-	-	143
Asia							
Japan	-	-	-	-	7	-	5,987
India	-	-	-	-	-	-	4,367
China	-	1	-	-	-	-	2,126
Korea	-	-	-	-	-	-	750
Pakistan	-	-	-	-	-	-	704
Bangladesh	-	-	-	-	-	-	595
Sri Lanka	-	-	-	-	-	-	413
Israel	-	-	-	-	-	-	350
Singapore	-	-	-	-	-	-	335
Philippines	-	-	-	-	-	-	160
Taiwan	-	-	-	-	-	-	151

Table 6: Total Arrivals by Country of Residence and Border Post - 2006 (cont'd)

Country of Residence	Middlepits	Two rivers	Limpopo valley	Dobe	Kwando	Shakawe	Total
Asia							
Malaysia	-	-	-	-	-	-	130
Hong Kong	-	-	-	-	-	-	102
Thailand	-	-	2	1	-	-	87
Lebanon	-	-	-	-	-	-	70
Saudi Arabia	-	-	-	-	-	-	40
Turkey	-	-	-	-	-	-	40
Other Asia	-	-	-	-	-	-	255
Oceania							
Australia	-	6	17	37	1	-	8,823
New Zealand	-	-	-	1	-	-	2,323
Pacific Islands	-	-	-	-	-	-	10
Not Stated	312	336	22	80	65	-	85,284
Total	2,698	2,394	971	1,380	2,197	290	1,820,057

Table 7: Arrivals by Border Post and Month of Arrival - 2006

Border Post	January	February	March	April	May	June	July	August	September	October	November	December	Total
Ramokgwebana road	74,150	5,600	32,370	20,360	39,810	49,660	51,810	54,730	65,870	13,420	57,840	58,670	524,290
Tlokweng	16,910	3,980	38,540	11,480	19,180	12,350	10,170	19,210	20,230	19,140	20,270	23,840	215,300
Kazungula ferry	17,800	14,650	19,190	18,870	3,520	7,990	8,810	9,150	23,580	24,660	7,840	3,570	159,630
Martins Drift	9,500	12,240	17,640	3,340	10,650	4,970	12,870	12,550	11,820	10,400	10,550	17,020	133,550
Ramatlabama road	8,530	7,110	8,570	26,780	8,330	8,300	8,860	6,870	9,990	15,560	8,290	13,130	130,320
Pioneer gate	8,240	7,270	15,260	15,080	2,040	9,290	9,730	9,010	9,900	8,890	8,870	13,960	117,540
Kazungula road	5,810	4,530	5,950	5,530	4,570	1,630	4,900	8,250	14,500	10,140	3,050	6,070	74,930
Mamono	6,670	3,940	4,700	6,050	4,910	5,040	7,040	6,740	5,860	3,120	5,230	9,030	68,330
Ngoma	1,900	1,730	2,160	2,350	2,740	2,020	6,290	3,410	2,500	880	3,350	4,700	34,030
Ramotswa	1,890	1,130	1,720	2,260	2,360	2,490	2,920	2,550	2,620	2,690	2,310	3,270	28,210
Matsiloje	2,620	1,310	1,800	2,840	2,080	2,020	3,080	2,030	2,050	2,000	1,690	2,580	26,100
Phitshane Molopo	410	2,970	460	890	3,240	430	550	3,280	4,900	900	3,950	680	22,660
Kasane	1,470	1,350	1,590	2,140	1,820	1,640	1,930	1,880	1,720	2,600	1,630	1,740	21,510
Mohembo	1,010	600	800	740	2,080	1,070	3,800	2,540	2,080	2,080	1,580	1,640	20,020
Sikwane	1,100	1,040	1,450	1,250	1,090	1,330	1,480	1,460	3,830	1,490	1,180	1,930	18,630
Parrshalt	1,110	1,080	1,150	1,410	1,340	1,840	1,680	1,620	1,720	1,220	1,160	2,980	18,310
Maitengwe	2,460	1,360	1,390	1,940	1,350	1,230	1,300	1,400	1,400	1,170	890	1,890	17,780
Plaatjan	410	1,590	160	400	570	610	700	490	590	2,400	3,230	760	11,910
Point Drift	500	500	740	590	480	1,460	770	920	870	940	660	780	9,210
Bray	314	292	352	572	330	380	732	334	384	292	246	386	4,614
Bokspits	159	126	230	438	225	285	611	298	220	102	146	337	3,177
Tsabong	217	205	294	70	329	662	55	46	499	277	311	66	3,031
Middlepits	97	113	148	281	174	240	530	205	220	225	203	262	2,698
Two rivers	99	75	170	410	229	227	332	219	243	107	134	149	2,394
Zanzibar	208	287	48	283	139	299	48	350	45	336	232	49	2,324
Kwando	97	145	107	49	98	233	221	365	170	407	179	126	2,197
Pandamatenge	76	20	50	384	70	75	483	140	218	194	70	55	1,835
Dobe	73	73	62	202	95	206	133	172	103	83	68	110	1,380
Makopong	50	40	77	110	47	64	193	68	110	55	83	159	1,056
Limpopo valley	7	64	80	116	100	40	147	123	104	102	37	51	971

Table 7: Arrivals by Border Post and Month of Arrival – 2006 (cont'd)

Border Post	January	February	March	April	May	June	July	August	September	October	November	December	Total
Shakawe	-	-	-	-	-	-	-	-	-	290	-	-	290
Boshhoek	-	-	30	14	5	-	-	19	4	12	4	-	88
Sir Seretse Khama Air	6,100	2,740	6,900	5,300	6,230	5,740	6,360	6,480	6,620	6,360	6,590	4,680	70,100
Maun airport	840	920	1,350	60	2,370	2,600	2,750	3,190	2,890	2,840	2,310	1,560	23,680
Francistown airport	204	442	206	129	269	253	290	270	330	40	344	287	3,064
Kasane airport	331	267	45	84	49	48	52	55	184	468	260	244	2,087
Sowa airport	84	57	70	82	53	52	64	59	71	74	65	36	767
Orapa air	56	40	58	58	57	36	127	44	61	59	61	16	673
Selibe Phikwe air	15	16	51	20	36	47	52	70	47	82	32	25	493
Jwaneng air	2	12	18	44	-	26	-	31	21	34	-	-	188
Ghanzi air	-	-	-	-	-	-	93	32	10	-	5	-	140
Ramokgwebana Rail	-	-	-	-	-	8,130	5,780	4,870	4,760	4,830	5,210	6,970	40,550
Total	171,519	79,914	165,986	133,006	123,065	135,013	157,743	165,530	203,344	140,969	160,160	183,808	1,820,057

Table 8: Total Arrivals by Arrival Month and Mode of Travel - 2006

Arrival Month	Mode of travel					Total
	Road	Air	Rail	Other	Not Stated	
January	163,820	7,657	30	12	-	171,519
February	75,304	4,558	-	52	-	79,914
March	157,093	8,803	30	40	20	165,986
April	126,544	6,442	-	20	-	133,006
May	113,869	9,164	20	12	-	123,065
June	117,960	8,872	8,151	10	20	135,013
July	141,860	9,987	5,883	3	10	157,743
August	149,645	10,404	4,870	601	10	165,530
September	188,199	10,361	4,760	4	20	203,344
October	125,533	10,384	4,982	70	-	140,969
November	145,226	9,716	5,210	7	1	160,160
December	169,927	6,899	6,970	12	-	183,808
Total	1,674,980	103,247	40,906	843	81	1,820,057
<i>Percent</i>	<i>92.0</i>	<i>5.7</i>	<i>2.2</i>	<i>0.0</i>	<i>0.0</i>	<i>100.0</i>

Table 9: Total Arrivals by Age Group and Sex - 2006

Age Group	Male	Female	Total	Percent
0-4	2,987	1,685	4,672	<i>0.3</i>
5-9	959	715	1,674	<i>0.1</i>
10-14	3,377	2,637	6,014	<i>0.3</i>
15-19	22,055	19,151	41,206	<i>2.3</i>
20-24	86,954	76,413	163,367	<i>9.0</i>
25-29	153,499	116,272	269,771	<i>14.8</i>
30-34	190,339	126,296	316,635	<i>17.4</i>
35-39	165,665	97,902	263,567	<i>14.5</i>
40-44	128,216	76,341	204,557	<i>11.2</i>
45-49	112,436	62,498	174,934	<i>9.6</i>
50-54	93,770	49,022	142,792	<i>7.8</i>
55-59	59,671	31,689	91,360	<i>5.0</i>
60-64	36,334	23,447	59,781	<i>3.3</i>
65+	41,892	30,140	72,032	<i>4.0</i>
Not Stated	4,497	3,198	7,695	<i>0.4</i>
Total	1,102,651	717,406	1,820,057	<i>100</i>

Table 10: Total Arrivals by Country of Residence and Age Group - 2006

Country of Residence	0-4	5-9	10-14	15-19	20-24	25-29	30-34	35-39	40-44	45-49	50-54	55-59	60-64	65+	Not Stated	Total
Africa																
South Africa	1,952	822	2,342	14,691	34,626	55,337	77,090	78,268	74,593	68,780	60,518	39,943	24,893	31,025	2,182	567,062
Zimbabwe	1,312	291	992	9,627	81,910	123,370	122,625	81,300	45,730	32,770	23,580	10,186	5,670	6,205	2,064	547,632
Botswana	378	235	902	5,272	8,714	21,637	40,508	42,932	33,239	27,795	21,758	12,428	6,865	4,994	1,022	228,679
Zambia	150	10	342	2,498	14,162	29,244	30,525	22,262	14,864	11,040	5,478	3,110	1,483	1,613	971	137,752
Namibia	184	62	453	3,214	6,615	10,576	13,289	11,440	10,175	9,185	7,292	4,185	2,125	2,721	390	81,906
Swaziland	30	-	20	330	321	700	721	840	586	311	131	102	62	42	20	4,216
Lesotho	-	10	51	130	452	510	754	510	453	422	413	201	100	172	10	4,188
Malawi	-	10	-	120	190	730	641	693	571	452	370	100	70	120	-	4,067
Kenya	-	10	30	50	283	410	632	434	400	315	150	125	60	30	20	2,949
Tanzania	20	-	-	51	100	230	322	242	172	221	361	112	40	20	-	1,891
Mozambique	-	-	10	62	40	232	161	293	310	170	210	10	52	2	-	1,552
Uganda	-	-	1	-	210	440	251	190	90	80	100	30	10	40	-	1,442
Nigeria	-	20	10	20	50	50	120	70	151	100	81	30	20	30	-	752
Mauritius	-	-	10	40	30	50	91	10	80	140	70	31	20	10	-	582
Angola	-	-	10	10	20	40	62	110	81	152	40	20	10	1	-	556
DRC	-	-	-	40	30	30	20	90	100	90	30	30	-	10	-	470
Ghana	-	-	10	20	30	60	40	40	51	11	50	20	30	20	-	382
Egypt	-	-	-	-	10	40	30	10	70	21	43	41	30	20	-	315
Ethiopia	10	-	-	-	12	52	20	30	20	50	-	10	31	10	-	245
Seychelles	-	-	-	-	10	20	-	42	-	20	10	-	-	-	-	102
Sudan	-	-	-	10	-	-	10	10	-	10	10	10	-	10	-	70
Cameroon	-	-	-	10	10	1	-	10	10	-	-	10	-	-	-	51
Madagascar	-	-	-	-	-	-	-	30	-	-	20	-	-	-	-	50
Sierra Leone	-	-	-	-	-	-	10	10	10	11	-	-	-	-	-	41
Libya	-	-	-	-	-	-	10	10	-	20	-	-	-	-	-	40
Gabon	-	-	-	-	-	-	-	10	-	-	10	20	-	-	-	40
Somalia	-	-	-	-	10	10	10	10	-	-	-	-	-	-	-	40
Other Africa	-	-	10	40	-	40	70	30	42	50	41	12	-	21	-	356

Table 10: Total Arrivals by Country of Residence and Age Group – 2006 (cont'd)

Country of Residence	0-4	5-9	10-14	15-19	20-24	25-29	30-34	35-39	40-44	45-49	50-54	55-59	60-64	65+	Not Stated	Total
America																
USA	47	41	101	967	2,118	2,087	2,072	1,833	1,688	2,617	2,820	3,036	3,991	6,809	129	30,356
Canada	12	-	30	111	333	491	399	335	293	525	516	465	467	572	-	4,549
Brazil	-	-	-	12	11	31	22	51	33	50	31	32	1	11	-	285
Argentina	10	-	-	1	30	90	20	10	21	20	20	-	-	32	-	254
Mexico	-	-	-	20	21	20	22	42	10	-	11	11	10	1	-	168
Chile	-	-	-	-	-	30	-	-	10	10	2	20	30	30	-	132
Barbados	-	-	-	20	-	10	-	-	-	10	-	-	-	10	-	50
Cuba	-	-	-	-	-	-	10	-	-	10	-	20	10	-	-	50
Trinidad	-	-	-	-	-	-	-	-	10	-	20	10	10	-	-	50
Other America	-	-	-	10	30	41	32	31	20	30	40	50	-	20	-	304
Europe																
United Kingdom	31	1	73	919	2,304	2,642	2,881	2,059	2,596	2,291	2,379	2,738	2,317	2,699	32	25,962
Germany	23	11	32	238	842	1,201	1,452	1,674	1,832	1,490	1,650	1,109	1,541	2,436	32	15,563
Netherlands	21	20	70	116	571	1,487	1,705	914	832	777	835	1,268	1,196	1,064	30	10,906
France	-	20	10	305	234	494	764	672	721	860	708	800	493	655	11	6,747
Spain	1	-	-	30	100	275	879	766	748	453	408	204	133	134	-	4,131
Italy	1	-	31	71	158	313	736	513	571	395	262	355	291	311	50	4,058
Switzerland	10	10	20	82	144	283	324	289	396	319	372	331	375	372	11	3,338
Belgium Luxemburg	-	1	1	46	116	315	295	261	241	329	219	290	101	98	10	2,323
Ireland	-	-	-	25	90	214	184	131	103	174	175	131	90	72	-	1,389
Sweden	-	-	-	60	110	200	122	113	140	50	108	192	132	132	-	1,359
Denmark	2	-	-	41	61	92	121	128	93	77	107	195	114	199	-	1,230
Norway	-	-	-	52	140	260	20	91	92	63	113	140	142	100	-	1,213
Austria	-	1	-	20	51	111	82	112	106	131	123	113	75	121	-	1,046
Russia	-	20	10	-	10	90	80	192	131	231	51	50	30	30	-	925
Portugal	-	-	-	-	-	60	101	30	70	113	102	50	91	90	-	707
Czechoslovakia	-	11	1	10	10	90	32	10	44	42	133	30	60	23	-	496
Poland	10	-	-	-	10	50	20	30	40	70	60	50	30	10	-	380
Finland	-	-	2	11	10	70	30	60	21	42	36	4	20	30	10	346
Greece	-	-	-	10	-	-	31	11	50	10	60	33	10	23	10	248

Table 10: Total Arrivals by Country of Residence and Age Group – 2006 (cont'd)

Country of Residence	0-4	5-9	10-14	15-19	20-24	25-29	30-34	35-39	40-44	45-49	50-54	55-59	60-64	65+	Not Stated	Total
Europe																
Yugoslavia	-	-	10	10	40	-	10	40	30	40	20	30	-	10	-	240
Bulgaria	-	-	-	-	10	-	30	-	10	10	-	50	10	-	-	120
Ukraine	-	-	-	-	-	1	20	20	-	11	21	10	-	1	-	84
Hungary	-	-	-	10	-	-	1	10	20	20	20	-	-	-	-	81
Luxembourg	-	-	-	-	10	10	10	10	10	-	1	10	-	10	-	71
Slovakia	-	-	-	-	10	-	10	-	-	10	20	12	-	-	-	62
Croatia	-	-	-	-	-	-	10	10	20	20	-	-	-	-	-	60
Romania	-	-	-	10	-	-	10	-	1	10	20	-	-	-	-	51
Estonia	-	-	-	-	-	-	10	-	-	10	-	10	20	-	-	50
Other Europe	-	-	-	-	40	-	10	31	10	11	21	20	-	-	-	143
Asia																
Japan	10	10	10	-	100	290	410	521	230	200	160	571	882	2,593	-	5,987
India	20	-	30	172	291	640	811	600	380	271	322	350	180	290	10	4,367
China	10	-	30	40	130	180	260	270	380	232	252	181	100	61	-	2,126
Korea	-	-	-	20	80	90	70	40	20	100	40	80	130	80	-	750
Pakistan	-	-	10	10	130	122	140	90	80	80	12	20	10	-	-	704
Bangladesh	-	10	10	10	71	152	170	41	70	21	20	10	-	-	10	595
Sri Lanka	-	-	-	-	31	30	90	70	31	40	21	60	20	20	-	413
Israel	-	-	10	-	10	40	30	30	50	40	40	20	20	60	-	350
Singapore	-	-	-	10	20	60	70	72	42	20	11	30	-	-	-	335
Philippines	-	-	-	10	-	-	10	10	80	20	-	10	20	-	-	160
Taiwan	-	-	-	-	-	-	20	20	-	-	60	31	-	20	-	151
Malaysia	-	-	-	-	10	10	20	10	20	20	20	20	-	-	-	130
Hong Kong	-	-	-	10	-	-	10	-	2	40	40	-	-	-	-	102
Thailand	-	-	-	20	23	-	20	3	11	-	-	10	-	-	-	87
Lebanon	-	-	-	-	10	-	-	10	20	10	10	10	-	-	-	70
Saudi Arabia	-	-	-	-	-	-	-	-	10	-	10	10	-	10	-	40
Turkey	-	-	-	-	10	-	-	-	-	10	-	10	-	10	-	40
Other Asia	-	-	10	-	31	10	90	20	20	21	2	40	-	11	-	255

Table 10: Total Arrivals by Country of Residence and Age Group – 2006 (cont'd)

Country of Residence	0-4	5-9	10-14	15-19	20-24	25-29	30-34	35-39	40-44	45-49	50-54	55-59	60-64	65+	Not Stated	Total
Oceania																
Australia	21	11	13	192	637	1,503	1,133	744	549	761	781	887	791	779	21	8,823
New Zealand	-	-	10	20	170	481	353	273	200	143	136	163	141	233	-	2,323
Pacific Islands	-	-	-	10	-	-	-	-	-	-	-	-	-	-	-	10
Not Stated	407	37	297	1,240	6,164	11,296	12,359	10,338	9,551	9,358	8,605	6,212	4,126	4,644	650	85,284
Total	4,672	1,674	6,014	41,206	163,367	269,771	316,635	263,567	204,557	174,934	142,792	91,360	59,781	72,032	7,695	1,820,057

Table 11: Total Arrivals by Nationality and Age Group - 2006

Nationality	0-4	5-9	10-14	15-19	20-24	25-29	30-34	35-39	40-44	45-49	50-54	55-59	60-64	65+	Not Stated	Total
Africa																
Zimbabwe	1,602	281	1,162	10,671	87,503	136,615	146,985	103,886	58,828	42,562	30,525	12,825	6,858	6,869	2,646	649,818
South Africa	2,202	923	2,632	16,950	37,384	61,216	88,053	90,450	86,738	80,824	71,129	46,740	28,063	33,404	2,555	649,263
Zambia	180	10	452	3,089	16,365	33,956	36,721	27,838	19,326	14,563	7,623	3,662	1,624	1,613	1,111	168,133
Namibia	175	73	503	3,178	6,645	10,544	12,722	11,134	10,027	8,960	6,961	4,034	2,065	2,666	373	80,060
Malawi	10	10	20	260	580	1,561	2,011	1,574	1,310	1,375	753	261	230	230	40	10,225
Kenya	-	-	60	120	434	800	1,134	1,114	1,122	787	270	232	120	70	50	6,313
Lesotho	-	10	52	161	462	680	982	702	645	531	645	230	150	160	20	5,430
Swaziland	50	-	20	290	381	820	860	930	805	332	183	120	60	52	30	4,933
Botswana	20	-	21	163	246	390	496	621	671	374	536	362	172	132	31	4,235
Tanzania	10	10	30	222	230	520	522	482	562	406	600	193	60	70	1	3,918
Uganda	-	-	11	30	250	741	473	510	262	390	323	152	60	50	-	3,252
Nigeria	10	50	10	90	120	160	330	470	382	400	190	100	40	40	-	2,392
Mozambique	-	-	-	33	71	336	311	365	491	290	290	20	100	30	-	2,337
Mauritius	-	10	-	40	50	90	162	127	370	200	180	50	30	20	-	1,329
Ghana	-	-	20	60	100	80	210	120	211	81	182	112	90	30	-	1,296
DRC	-	10	10	50	90	80	190	161	301	190	80	20	20	10	-	1,212
Angola	-	-	10	20	50	50	50	80	151	172	40	20	10	31	-	684
Ethiopia	10	-	-	50	12	92	120	90	40	90	40	50	21	20	-	635
Egypt	-	10	-	10	10	50	90	30	90	61	13	51	70	10	-	495
Somalia	-	-	-	-	20	30	10	60	30	30	-	20	-	-	-	200
Sierra Leone	-	-	-	-	-	-	10	50	20	50	10	-	-	-	-	140
Sudan	-	-	-	20	-	-	-	-	30	20	30	10	-	20	-	130
Cameroon	-	-	-	10	10	20	20	20	20	-	-	10	-	-	-	110
Madagascar	-	-	-	-	10	10	10	30	-	-	20	20	-	-	-	100
Seychelles	-	-	-	-	-	20	-	22	-	30	10	-	-	-	-	82
Gambia	-	-	-	-	10	-	-	-	30	-	-	-	-	10	-	50

Table 11: Total Arrivals by Nationality and Age Group - 2006 (cont'd)

Nationality	0-4	5-9	10-14	15-19	20-24	25-29	30-34	35-39	40-44	45-49	50-54	55-59	60-64	65+	Not Stated	Total
Africa																
Libya	-	-	-	-	-	-	10	11	-	-	-	10	10	-	-	41
Algeria	-	-	-	-	-	20	-	-	-	-	10	-	-	10	-	40
Guinea	-	-	-	-	-	-	-	20	-	10	10	-	-	-	-	40
Senegal	-	-	-	-	-	-	-	-	10	-	10	20	-	-	-	40
Togo	-	-	-	-	-	-	-	-	-	10	30	-	-	-	-	40
Reunion	-	-	-	-	-	20	10	10	-	-	-	-	-	-	-	40
Other Africa	-	-	20	20	10	50	61	50	80	70	61	30	10	11	-	473
America																
USA	67	51	161	1,213	2,196	2,448	2,342	2,077	2,114	3,057	3,313	3,654	4,278	7,224	188	34,383
Canada	12	-	70	171	391	540	521	435	448	665	663	631	552	663	-	5,762
Brazil	-	-	-	12	11	81	52	41	74	70	21	32	1	11	10	416
Argentina	10	-	-	1	20	102	32	20	30	30	50	1	-	32	-	328
Trinidad	-	-	-	40	10	-	-	10	10	-	100	20	10	20	20	240
Jamaica	-	-	-	10	-	10	20	30	10	90	40	-	-	-	-	210
Mexico	-	-	-	10	20	11	31	42	10	-	11	-	-	11	-	146
Cuba	-	-	-	-	-	-	20	20	-	20	20	20	10	10	-	120
Colombia	-	-	-	-	-	-	20	10	-	30	-	-	-	-	20	80
Chile	-	-	-	-	-	30	-	-	-	-	2	-	20	10	-	62
Barbados	-	-	-	20	-	10	-	-	10	10	-	10	-	-	-	60
Ecuador	-	-	-	-	20	10	1	10	-	-	-	-	-	-	-	41
Peru	-	-	-	-	-	20	20	1	-	-	-	-	-	-	-	41
Other America	-	-	-	10	30	31	22	50	20	10	20	40	-	3	20	256
Europe																
United Kingdom	52	-	184	1,332	2,605	2,780	3,644	3,480	4,623	5,002	5,339	5,636	4,596	5,097	96	44,466
Germany	24	22	61	388	1,015	1,577	1,736	2,171	2,459	1,914	2,280	1,633	2,105	3,046	22	20,453
Netherlands	21	20	70	168	702	1,620	1,762	984	1,027	989	1,153	1,599	1,790	1,689	50	13,644
France	10	30	32	337	275	661	937	896	1,164	1,048	903	1,038	654	867	32	8,884

Table 11: Total Arrivals by Nationality and Age Group - 2006 (cont'd)

Nationality	0-4	5-9	10-14	15-19	20-24	25-29	30-34	35-39	40-44	45-49	50-54	55-59	60-64	65+	Not Stated	Total
Europe																
Italy	1	-	42	101	188	397	830	655	723	457	505	581	396	487	30	5,393
Spain	1	-	-	60	130	328	940	816	771	552	389	215	171	163	10	4,546
Switzerland	10	10	21	52	180	265	295	321	326	370	355	369	517	446	11	3,548
Belgium Luxembourg	10	-	12	56	128	420	384	352	310	546	306	293	143	139	11	3,110
Ireland	-	-	10	27	113	325	338	234	237	386	286	250	264	104	-	2,574
Sweden	-	-	-	40	130	220	182	194	181	141	138	232	232	212	-	1,902
Denmark	2	-	-	61	71	102	202	169	145	87	178	258	240	324	10	1,849
Austria	-	1	10	30	72	112	123	172	156	211	194	286	117	235	-	1,719
Portugal	-	10	-	30	50	143	171	150	122	287	323	142	132	140	-	1,700
Norway	-	-	-	72	150	280	82	104	147	83	126	183	202	110	-	1,539
Russia	-	20	10	-	10	160	131	291	162	331	111	140	30	50	20	1,466
Yugoslavia	-	-	40	10	60	70	70	120	160	170	40	110	-	40	-	890
Poland	10	-	-	-	30	60	70	70	80	140	120	50	32	20	-	682
Czechoslovakia	-	21	2	-	20	100	92	60	35	32	152	50	20	43	-	627
Finland	-	-	2	21	10	70	30	100	51	52	56	65	10	20	10	497
Bulgaria	-	-	-	10	30	20	80	150	60	30	10	80	20	-	-	490
Greece	-	-	-	-	-	-	52	31	50	21	72	83	60	33	10	412
Croatia	-	-	-	-	10	-	10	10	-	20	50	20	10	-	-	130
Ukraine	-	-	-	-	-	11	20	30	-	20	20	20	-	1	1	123
Hungary	-	-	-	10	-	-	1	10	20	20	30	-	20	-	-	111
Slovakia	-	-	-	-	10	-	31	-	-	10	20	22	-	-	-	93
Luxembourg	-	-	-	-	10	10	10	20	10	-	11	-	-	-	-	71
Estonia	-	-	-	-	-	-	10	-	-	10	-	10	20	-	-	50
Romania	-	-	-	-	-	-	10	-	3	10	10	10	-	-	-	43
Other Europe	-	-	-	-	40	10	20	30	50	30	30	21	22	-	-	253
Asia																
India	50	30	50	482	803	2,245	2,806	2,682	1,664	1,281	1,106	931	401	623	80	15,234
Japan	10	10	10	10	110	350	471	652	300	212	170	581	912	2,633	-	6,431
China	20	10	30	160	240	420	570	712	981	602	621	280	120	100	10	4,876
Pakistan	-	-	10	70	260	423	371	371	360	200	121	42	50	40	-	2,318
Bangladesh	10	10	20	40	184	393	470	483	250	31	60	40	-	-	30	2,021
Sri Lanka	10	-	10	60	101	170	280	282	170	131	135	120	90	20	-	1,579

Table 11: Total Arrivals by Nationality and Age Group - 2006 (cont'd)

Nationality	0-4	5-9	10-14	15-19	20-24	25-29	30-34	35-39	40-44	45-49	50-54	55-59	60-64	65+	Not Stated	Total
Asia																
Korea	-	-	-	40	100	110	100	160	130	130	120	80	110	90	20	1,190
Israel	-	-	10	-	20	50	50	70	41	60	70	50	10	70	-	501
Singapore	-	-	-	10	10	40	40	82	41	30	51	20	-	20	-	344
Philippines	-	-	-	10	10	10	30	30	81	40	20	-	10	-	-	241
Malaysia	-	-	-	10	20	10	30	10	20	30	40	30	-	-	-	200
Taiwan	-	-	-	-	-	-	30	20	-	10	60	40	-	30	-	190
Cyprus	-	-	-	-	-	-	20	10	40	1	30	-	60	-	-	161
Lebanon	-	-	-	-	-	20	14	10	10	10	10	10	30	-	-	114
Turkey	-	-	-	-	20	-	-	12	1	20	-	10	20	10	-	93
Thailand	-	-	-	-	3	10	20	10	10	10	10	10	-	-	-	83
Iran	-	-	-	-	-	-	12	-	-	30	-	20	10	-	-	72
Hong Kong	-	-	-	-	-	3	20	-	10	10	10	-	-	-	-	53
Iraq	-	-	-	-	10	20	-	-	20	-	-	-	-	-	-	50
Other Asia	-	-	-	20	21	10	110	101	80	40	23	30	10	21	-	466
Oceania																
Australia	31	11	23	223	686	1,727	1,188	945	710	851	798	1,130	856	792	30	10,001
New Zealand	-	-	10	23	172	523	500	475	192	181	214	214	192	213	2	2,911
Pacific Islands	-	-	-	10	-	-	-	10	-	10	-	-	-	-	-	30
Tonga	-	-	-	10	-	-	-	-	-	-	-	-	-	-	-	10
Other Oceania	-	-	-	-	-	4	-	-	-	-	-	-	-	-	-	4
Not Stated	42	21	81	199	817	1,248	1,606	1,117	1,096	1,255	922	564	363	562	95	9,988
Total	4,672	1,674	6,014	41,206	163,367	269,771	316,635	263,567	204,557	174,934	142,792	91,360	59,781	72,032	7,695	1,820,057

Total 12: Total Arrivals by Border post and Purpose of Entry - 2006

Border Post	Returning resident	Prospective resident	Seeking employment	Employment	Visitor	Holiday	Business	In transit	Diplomat	Student	Other	Not Stated	Total
Ramokgwebana road	41,470	31,520	2,020	12,880	297,160	25,980	11,630	30,280	820	510	63,610	6,410	524,290
Tlokweng	34,930	11,760	1,900	7,230	33,420	32,460	18,930	11,960	880	680	53,910	7,240	215,300
Kazungula ferry	11,180	6,030	940	8,400	14,090	30,560	4,640	20,050	300	450	58,970	4,020	159,630
Martinsdrift	10,510	2,730	2,810	5,410	10,290	20,170	4,930	50,230	130	70	25,960	310	133,550
Ramatlabama road	13,560	5,940	550	2,520	34,310	17,720	8,190	12,460	1,370	240	32,570	890	130,320
Pioneer gate	9,210	3,540	1,390	2,990	11,420	17,030	8,200	35,180	190	230	26,460	1,700	117,540
Kazungula road	5,500	1,850	520	8,510	7,290	22,050	2,010	10,480	50	160	15,900	610	74,930
Mamono	1,640	1,280	640	1,780	5,440	6,600	740	45,170	70	30	4,540	400	68,330
Ngoma	430	480	1,020	2,450	1,140	9,600	210	10,560	40	20	7,880	200	34,030
Ramotswa	6,850	1,650	60	690	6,120	2,580	1,010	520	40	50	8,470	170	28,210
Matsiloje	680	1,710	100	270	7,930	1,400	160	6,790	20	-	7,010	30	26,100
Phitshane Molopo	720	1,840	20	210	5,060	620	100	270	10	50	13,700	60	22,660
Kasane	570	440	320	970	1,480	2,950	680	6,420	20	40	7,330	290	21,510
Mohembo	350	480	160	4,400	1,570	8,930	140	1,220	50	20	2,700	-	20,020
Sikwane	1,600	1,030	120	150	7,210	740	160	1,960	20	20	5,380	240	18,630
Parrshalt	2,150	360	160	500	2,560	2,310	910	6,530	150	30	2,630	20	18,310
Maitengwe	340	1,430	30	130	6,650	270	120	3,170	30	-	5,580	30	17,780
Plaatjan	1,430	260	20	940	2,360	2,450	260	210	10	20	3,930	20	11,910
Point Drift	520	150	10	1,090	540	5,480	190	50	10	-	1,170	-	9,210
Bray	897	134	13	143	1,254	628	126	121	1	3	1,264	30	4,614
Bokspits	57	100	34	210	564	750	23	140	1	5	1,158	135	3,177
Tsabong	260	65	6	60	1,171	875	104	50	13	-	413	14	3,031
Middlepits	107	110	7	137	707	401	60	8	3	-	1,148	10	2,698
Two rivers	18	33	20	213	127	721	4	467	4	2	671	114	2,394
Zanzibar	445	88	11	98	348	569	143	146	2	-	466	8	2,324
Kwando	7	26	2	136	50	1,789	9	15	1	-	91	71	2,197
Pandamatenge	106	43	38	288	135	517	26	351	-	-	331	-	1,835

Total 12: Total Arrivals by Border post and Purpose of Entry – 2006 (cont'd)

Border Post	Returning resident	Prospective resident	Seeking employment	Employment	Visitor	Holiday	Business	In transit	Diplomat	Student	Other	Not Stated	Total
Dobe	21	73	19	181	330	474	20	21	1	-	208	32	1,380
Makopong	29	44	4	35	297	208	41	63	2	1	322	10	1,056
Limpopo valley	-	2	3	201	4	615	27	-	3	1	97	18	971
Shakawe	-	-	-	40	-	170	10	-	-	-	70	-	290
Boshoek	-	-	-	-	2	6	43	-	-	-	37	-	88
Sir Seretse Khama	13,710	2,820	530	3,130	5,310	19,300	13,410	580	1,040	730	9,530	10	70,100
Maun airport	1,020	280	150	5,220	430	14,400	300	170	60	10	1,590	50	23,680
Francistown airport	255	86	11	128	225	962	764	29	-	1	576	27	3,064
Kasane airport	193	22	40	518	36	754	45	210	4	2	262	1	2,087
Sowa Airport	128	23	1	15	43	207	196	3	-	1	148	2	767
Orapa airport	72	13	1	10	15	231	186	3	-	1	141	-	673
Selibe Phikwe air	70	10	3	21	20	146	84	4	-	-	133	2	493
Jwaneng airport	30	4	1	3	3	66	50	1	-	-	30	-	188
Ghanzi airport	2	-	4	14	4	74	22	-	-	-	20	-	140
Ramokgwebana rail	630	2,910	330	420	30,300	740	220	590	-	30	4,340	40	40,550
Total	161,697	81,366	14,018	72,741	497,415	254,503	79,123	256,482	5,345	3,407	370,746	23,214	1,820,057

Tables 13: Total Arrivals by Month and Purpose of Entry - 2006

Month	Returning resident	Prospective resident	Seeking employment	Employment	Visitor	Holiday	Business	In transit	Diplomat	Student	Other	Not Stated	Total
Male													
January	13,993	199	181	2,068	36,350	9,802	7,706	17,923	140	190	17,259	20	105,831
February	6,318	1,648	435	2,121	5,564	8,348	3,171	12,024	611	90	11,358	567	52,255
March	11,460	4,236	2,643	4,199	15,308	16,395	7,475	14,167	322	300	21,940	9,040	107,485
April	7,707	1,476	320	1,360	14,373	24,758	6,428	14,306	154	120	11,287	341	82,630
May	7,354	3,361	693	3,340	13,806	10,452	4,927	11,325	364	73	20,039	519	76,253
June	5,802	5,633	757	2,174	20,703	11,536	4,652	11,344	203	150	13,620	77	76,651
July	8,913	3,621	656	4,127	23,116	14,639	4,433	16,049	200	220	16,370	51	92,395
August	11,878	2,918	502	4,037	21,150	13,813	6,028	15,608	332	171	19,318	1,318	97,073
September	7,990	5,662	575	6,623	27,416	15,920	7,118	20,841	241	190	27,777	51	120,404
October	8,285	3,742	473	5,049	10,572	17,053	5,524	14,370	350	150	24,362	130	90,060
November	7,877	4,630	746	3,922	18,441	12,165	5,468	16,283	253	272	23,153	1,636	94,846
December	7,050	5,250	2,174	4,096	24,955	11,246	3,979	23,008	322	210	23,386	1,092	106,768
Female													
January	7,916	51	60	755	32,280	4,158	1,104	7,648	101	121	11,484	10	65,688
February	3,535	1,523	183	1,542	4,940	3,804	630	3,061	480	30	7,673	258	27,659
March	6,318	3,912	645	2,880	15,865	7,331	1,314	4,334	111	230	11,736	3,825	58,501
April	4,344	1,331	206	706	17,681	12,577	860	5,776	151	72	6,554	118	50,376
May	4,190	2,744	268	2,098	16,671	5,028	732	4,000	122	83	10,628	248	46,812
June	2,461	5,168	288	1,237	26,958	6,612	872	4,552	101	181	9,891	41	58,362
July	4,717	3,456	185	3,097	26,664	10,039	736	5,340	110	140	10,793	71	65,348
August	6,447	2,697	181	2,698	29,638	7,720	1,807	5,624	171	90	10,447	937	68,457
September	4,455	5,004	181	4,866	29,748	9,105	1,562	8,690	193	80	19,035	21	82,940
October	4,285	2,787	190	3,935	9,763	10,111	849	3,942	101	51	14,865	30	50,909
November	4,470	4,789	387	2,975	24,949	5,804	948	5,841	151	102	12,795	2,103	65,314
December	3,932	5,528	1,089	2,836	30,504	6,087	800	10,426	61	91	14,976	710	77,040
Total	161,697	81,366	14,018	72,741	497,415	254,503	79,123	256,482	5,345	3,407	370,746	23,214	1,820,057
<i>Percent</i>	8.9	4.5	0.8	4.0	27.3	14.0	4.3	14.1	0.3	0.2	20.4	1.3	100.0

Tables 13: Total Arrivals by Month and Purpose of Entry – 2006 (cont'd)

Month	Returning resident	Prospective resident	Seeking employment	Employment	Visitor	Holiday	Business	In transit	Diplomat	Student	Other	Not Stated	Total
Both													
January	21,909	250	241	2,823	68,630	13,960	8,810	25,571	241	311	28,743	30	171,519
February	9,853	3,171	618	3,663	10,504	12,152	3,801	15,085	1,091	120	19,031	825	79,914
March	17,778	8,148	3,288	7,079	31,173	23,726	8,789	18,501	433	530	33,676	12,865	165,986
April	12,051	2,807	526	2,066	32,054	37,335	7,288	20,082	305	192	17,841	459	133,006
May	11,544	6,105	961	5,438	30,477	15,480	5,659	15,325	486	156	30,667	767	123,065
June	8,263	10,801	1,045	3,411	47,661	18,148	5,524	15,896	304	331	23,511	118	135,013
July	13,630	7,077	841	7,224	49,780	24,678	5,169	21,389	310	360	27,163	122	157,743
August	18,325	5,615	683	6,735	50,788	21,533	7,835	21,232	503	261	29,765	2,255	165,530
September	12,445	10,666	756	11,489	57,164	25,025	8,680	29,531	434	270	46,812	72	203,344
October	12,570	6,529	663	8,984	20,335	27,164	6,373	18,312	451	201	39,227	160	140,969
November	12,347	9,419	1,133	6,897	43,390	17,969	6,416	22,124	404	374	35,948	3,739	160,160
December	10,982	10,778	3,263	6,932	55,459	17,333	4,779	33,434	383	301	38,362	1,802	183,808
Total	161,697	81,366	14,018	72,741	497,415	254,503	79,123	256,482	5,345	3,407	370,746	23,214	1,820,057

Table 14: Total arrivals by Nationality and Purpose of Entry - 2006

Nationality	Returning resident	Prospective resident	Seeking employment	Employment	Visitor	Holiday	Business	In transit	Diplomat	Student	Other	Not Stated	Total
Africa													
Zimbabwe	52,885	38,312	2,950	14,601	343,261	32,386	13,807	51,221	991	591	91,389	7,424	649,818
South Africa	48,874	26,051	6,065	19,839	109,096	113,070	50,166	100,431	2,186	1,003	163,727	8,755	649,263
Zambia	15,161	6,383	2,052	1,308	17,107	13,673	5,163	44,759	340	351	57,795	4,041	168,133
Namibia	1,126	2,323	1,033	930	7,904	4,502	1,654	44,812	121	90	14,845	720	80,060
Malawi	2,416	571	90	270	2,130	613	391	1,411	70	90	2,013	160	10,225
Kenya	2,133	502	70	250	1,044	462	244	382	20	140	1,015	51	6,313
Lesotho	481	371	50	183	1,317	633	340	340	60	240	1,365	50	5,430
Swaziland	243	310	20	510	701	1,082	340	583	50	30	1,014	50	4,933
Botswana	2,498	53	1	194	93	91	51	30	60	20	1,134	10	4,235
Tanzania	1,541	190	60	101	605	175	164	310	50	30	652	40	3,918
Uganda	817	401	30	30	631	250	100	281	10	60	621	21	3,252
Nigeria	1,140	60	-	60	260	121	30	60	30	20	571	40	2,392
Mozambique	210	130	51	70	336	240	151	221	60	-	828	40	2,337
Mauritius	647	90	20	61	90	101	40	-	10	10	250	10	1,329
Ghana	661	130	-	22	52	41	110	40	-	40	200	-	1,296
DRC	410	60	-	50	180	150	30	61	-	10	231	30	1,212
Angola	160	-	-	10	80	120	81	10	-	11	212	-	684
Ethiopia	320	42	-	40	32	61	20	20	-	-	100	-	635
Egypt	140	-	-	1	60	91	10	-	-	-	173	20	495
Somalia	-	20	-	-	-	20	-	120	10	-	30	-	200
Sierra Leone	30	-	-	-	30	-	-	-	10	10	60	-	140
Sudan	60	10	-	-	-	20	-	-	-	-	40	-	130
Cameroon	20	-	-	20	30	-	-	-	-	-	40	-	110
Madagascar	10	-	-	-	10	-	20	20	10	-	30	-	100
Seychelles	-	-	-	-	-	22	10	-	-	10	40	-	82
Gambia	20	-	-	-	-	20	-	-	10	-	-	-	50
Libya	-	-	-	-	-	1	-	-	20	-	20	-	41
Algeria	-	-	-	-	10	-	10	-	-	-	20	-	40
Guinea	30	-	-	-	-	-	-	-	-	-	10	-	40
Senegal	10	-	-	-	-	-	-	-	-	-	30	-	40

Table 14: Total arrivals by Nationality and Purpose of Entry – 2006 (cont'd)

Nationality	Returning resident	Prospective resident	Seeking employment	Employment	Visitor	Holiday	Business	In transit	Diplomat	Student	Other	Not Stated	Total
Africa													
Togo	10	-	-	-	-	10	-	20	-	-	-	-	40
Reunion	-	-	-	-	20	20	-	-	-	-	-	-	40
Other Africa	110	-	-	-	100	71	10	60	20	20	71	11	473
America													
USA	1,964	778	207	8,253	1,404	16,450	628	1,270	360	221	2,740	108	34,383
Canada	579	160	22	1,097	322	2,323	142	226	30	90	729	42	5,762
Brazil	40	10	1	5	30	147	10	80	10	-	83	-	416
Argentina	53	10	10	31	10	144	-	10	-	-	60	-	328
Trinidad	60	10	-	10	80	-	10	-	-	-	70	-	240
Jamaica	70	-	-	-	40	20	10	-	-	-	60	10	210
Mexico	-	-	-	41	-	93	-	-	-	-	11	1	146
Cuba	20	-	-	30	40	-	-	-	-	-	30	-	120
Colombia	10	-	-	-	-	50	-	-	-	-	20	-	80
Chile	-	-	-	2	-	60	-	-	-	-	-	-	62
Barbados	20	-	-	-	20	10	-	-	10	-	-	-	60
Ecuador	-	-	-	1	10	20	-	-	-	-	10	-	41
Peru	-	-	-	-	-	20	1	20	-	-	-	-	41
Other America	50	-	10	31	12	91	10	-	10	-	42	-	256
Europe													
United Kingdom	8,981	1,230	274	3,881	2,973	17,536	2,511	2,134	130	70	4,513	233	44,466
Germany	1,397	294	334	4,406	661	8,765	218	2,163	70	20	2,038	87	20,453
Netherlands	659	143	34	3,090	257	6,895	95	620	12	-	1,794	45	13,644
France	453	81	10	1,585	92	4,716	187	369	50	20	1,228	93	8,884
Italy	436	91	50	933	190	2,322	84	332	10	10	879	56	5,393
Spain	30	10	2	834	71	2,728	70	212	10	-	569	10	4,546
Switzerland	82	14	81	928	121	1,782	61	157	20	10	270	22	3,548
Belgium Luxembourg	161	41	33	495	25	1,478	119	175	20	30	531	2	3,110
Ireland	364	74	20	387	135	1,051	93	125	-	10	284	31	2,574
Sweden	170	1	10	385	50	704	90	170	30	-	272	20	1,902
Denmark	192	21	24	328	50	770	31	144	10	-	279	-	1,849

Table 14: Total arrivals by Nationality and Purpose of Entry – 2006 (cont'd)

Nationality	Returning resident	Prospective resident	Seeking employment	Employment	Visitor	Holiday	Business	In transit	Diplomat	Student	Other	Not Stated	Total
Europe													
Austria	131	21	40	345	40	695	12	171	10	-	254	-	1,719
Portugal	376	60	-	100	120	459	71	140	-	-	344	30	1,700
Norway	97	71	20	207	92	625	60	130	11	30	186	10	1,539
Russia	60	10	-	254	120	381	21	140	90	-	370	20	1,466
Yugoslavia	420	60	10	30	50	90	-	30	-	-	180	20	890
Poland	90	20	10	141	40	250	30	-	10	-	91	-	682
Czechoslovakia	30	10	-	84	11	218	10	40	-	-	224	-	627
Finland	60	31	-	111	51	160	1	12	10	-	61	-	497
Bulgaria	100	10	-	20	20	50	10	10	-	-	240	30	490
Greece	80	-	-	43	30	154	10	22	-	-	72	1	412
Croatia	70	10	-	20	-	-	-	-	-	-	30	-	130
Ukraine	10	-	-	20	-	40	1	30	-	-	12	10	123
Hungary	-	-	-	21	-	80	-	10	-	-	-	-	111
Slovakia	10	-	-	10	-	73	-	-	-	-	-	-	93
Luxembourg	-	-	-	-	-	51	-	10	-	-	10	-	71
Estonia	-	-	-	10	-	40	-	-	-	-	-	-	50
Romania	-	-	-	-	-	10	3	-	10	-	20	-	43
Other Europe	50	10	10	20	30	72	10	1	-	-	50	-	253
Asia													
India	6,915	661	150	670	1,441	947	281	50	70	60	3,739	250	15,234
Japan	30	121	20	1,480	40	3,678	40	80	22	-	840	80	6,431
China	992	100	30	320	501	790	231	10	50	30	1,752	70	4,876
Pakistan	581	152	10	40	322	121	30	110	20	-	842	90	2,318
Bangladesh	540	70	-	100	220	101	20	-	-	-	920	50	2,021
Sri Lanka	770	71	20	100	110	102	60	-	-	-	334	12	1,579
Korea	200	10	-	210	80	370	-	20	-	-	290	10	1,190
Israel	100	10	-	70	20	160	21	-	20	-	90	10	501
Singapore	50	20	-	40	60	64	30	10	-	-	60	10	344
Philippines	80	20	-	50	20	50	1	-	-	-	20	-	241

Table 14: Total arrivals by Nationality and Purpose of Entry – 2006 (cont'd)

Nationality	Returning resident	Prospective resident	Seeking employment	Employment	Visitor	Holiday	Business	In transit	Diplomat	Student	Other	Not Stated	Total
Asia													
Malaysia	20	10	-	30	10	70	20	10	-	-	30	-	200
Taiwan	20	30	-	40	10	50	10	-	-	-	30	-	190
Cyprus	90	-	-	-	20	1	10	20	-	-	20	-	161
Lebanon	53	-	-	10	10	10	20	-	-	-	11	-	114
Turkey	10	-	-	-	10	60	-	-	-	-	3	10	93
Thailand	20	-	-	-	-	53	-	-	-	-	10	-	83
Iran	20	10	-	-	1	1	-	-	-	-	40	-	72
Hong Kong	12	-	-	-	-	30	-	-	-	-	11	-	53
Iraq	-	-	-	10	10	-	-	-	-	-	30	-	50
Other Asia	120	21	10	50	71	101	-	20	-	-	63	10	466
Oceania													
Australia	644	227	24	1,738	275	5,169	354	586	10	20	890	64	10,001
New Zealand	327	30	10	541	72	1,426	80	134	2	-	279	10	2,911
Pacific Islands	20	-	-	-	10	-	-	-	-	-	-	-	30
Tonga	-	-	-	10	-	-	-	-	-	-	-	-	10
Other Oceania	3	-	-	-	-	-	-	-	-	-	1	-	4
Not Stated	542	513	40	493	1,726	1,480	364	1,287	90	10	3,259	184	9,988
Total	161,697	81,366	14,018	72,741	497,415	254,503	79,123	256,482	5,345	3,407	370,746	23,214	1,820,057

Table 15: Total Arrivals by month and Quarter for years 1996 - 2006

Month	1996	1997	1998	1999	2000	2001	2002	2003	2004	2005	2006
January	96,035	91,792	116,405	156,168	177,314	158,245	164,526	165,224	178,461	188,193	171,519
February	82,118	78,599	94,267	110,762	124,349	116,630	135,340	146,459	151,140	152,307	79,914
March	85,655	82,291	107,932	117,392	194,500	134,999	154,379	160,986	160,143	177,844	165,986
1st Quarter	263,808	252,682	318,604	384,322	496,163	409,874	454,245	472,669	489,744	518,344	417,419
April	97,646	102,862	128,940	184,780	145,192	135,026	158,707	168,918	173,633	132,755	133,006
May	86,965	112,875	117,388	126,966	160,500	135,965	149,792	164,901	160,701	145,624	123,065
June	77,550	95,998	105,876	131,150	205,696	145,543	152,151	168,511	155,681	168,295	135,013
2nd Quarter	262,161	311,735	352,204	442,896	511,388	416,534	460,650	502,330	490,015	446,674	391,084
July	97,475	111,708	135,480	144,903	301,203	136,113	166,001	184,865	175,194	147,845	157,743
August	96,402	118,099	134,571	101,734	143,945	159,270	169,209	185,390	178,002	143,736	165,530
September	95,225	104,471	106,102	140,298	185,146	158,513	156,119	174,374	164,467	200,444	203,344
3rd Quarter	289,102	334,278	376,153	386,935	630,294	453,896	491,329	544,629	517,663	492,025	526,617
October	89,763	76,467	97,328	158,229	188,457	153,963	163,895	170,984	170,299	188,131	140,969
November	80,294	75,885	96,070	104,362	138,095	117,820	159,823	179,793	154,557	145,042	160,160
December	85,993	111,727	111,439	161,205	180,973	179,234	187,877	196,114	154,471	197,811	183,808
4th Quarter	256,050	264,079	304,837	423,796	507,525	451,017	511,595	546,891	479,327	530,984	484,937
Total	1,071,121	1,162,774	1,351,798	1,637,949	2,145,370	1,731,321	1,917,819	2,066,519	1,976,749	1,988,027	1,820,057

Table 16: Total Departures by Country of Residence and sex - 2006

Country Residence	Male	Female	Total
Africa			
Zimbabwe	292,142	350,628	642,770
Republic of South Africa	382,700	158,631	541,331
Botswana	184,512	92,125	276,637
Zambia	72,816	44,285	117,101
Namibia	57,683	26,798	84,481
Swaziland	3,098	1,548	4,646
Lesotho	1,917	1,816	3,733
Malawi	2,827	793	3,620
Kenya	1,634	583	2,217
Mozambique	1,126	516	1,642
Tanzania	1,240	344	1,584
Uganda	512	240	752
Angola	361	161	522
Mauritius	298	172	470
Nigeria	331	130	461
Zaire	300	70	370
Ghana	120	50	170
Egypt	110	20	130
Ethiopia	112	2	114
Cameroon	100	10	110
Madagascar	70	30	100
Seychelles	60	40	100
Tunisia	50	20	70
Rwanda	10	30	40
Libya	30	10	40
Sierra Leone	40	-	40
Sudan	30	10	40
Other Africa	223	26	249
America			
United States of America	16,067	19,099	35,166
Canada	2,255	2,118	4,373
Brazil	183	121	304
Mexico	142	112	254
Argentina	61	152	213
Cuba	70	21	91
Jamaica	10	61	71
Chile	21	20	41
Honduras	40	-	40
Colombia	30	10	40
Other America	217	232	449

Table 16: Total Departures by Country of Residence and sex - 2006 (cont'd)

Country Residence	Male	Female	Total
Europe			
United Kingdom	14,158	13,398	27,556
Germany	10,468	9,794	20,262
Netherlands	5,855	5,983	11,838
France	4,135	3,884	8,019
Italy	2,737	2,597	5,334
Spain	2,460	2,294	4,754
Switzerland	2,027	1,915	3,942
Belgium Luxemburg	1,571	1,486	3,057
Denmark	852	1,113	1,965
Austria	1,075	863	1,938
Sweden	868	871	1,739
Norway	627	817	1,444
Ireland	791	555	1,346
Russia	565	410	975
Portugal	362	321	683
Czechoslovakia	218	273	491
Poland	242	223	465
Finland	160	281	441
Greece	71	183	254
Yugoslavia	90	60	150
Hungary	60	70	130
Luxembourg	20	80	100
Ukraine	20	60	80
Slovakia	51	20	71
Latvia	1	61	62
Bulgaria	50	10	60
Estonia	20	30	50
Romania	30	10	40
Lithuania	20	20	40
Croatia	20	20	40
Other Europe	91	40	131
Asia			
Japan	6,107	10,581	16,688
India	1,357	492	1,849
China	1,192	573	1,765
Korea	500	620	1,120
Israel	354	140	494
Taiwan	160	120	280
Singapore	162	110	272
Pakistan	143	60	203
Hong Kong	70	120	190
Malaysia	90	80	170
Bangladesh	140	20	160
Sri Lanka	100	41	141
Philippines	90	40	130
Thailand	64	40	104

Table 16: Total Departures by Country of Residence and sex - 2006 (cont'd)

Country Residence	Male	Female	Total
Asia			
Turkey	20	60	80
Cyprus	40	10	50
Iran	10	30	40
Other Asia	511	420	931
Oceania			
Australia	5,163	5,725	10,888
New Zealand	1,054	1,171	2,225
Other Oceania	50	10	60
Not Stated	82,564	43,415	125,979
Total	1,173,204	812,654	1,985,858
<i>Percent</i>	59	41	100

Table 17: Total Departure By Country of Residence and Age Group - 2006

Country of Residence	0-4	5-9	10-14	15-19	20-24	25-29	30-34	35-39	40-44	45-49	50-54	55-59	60-64	65+	Not Stated	Total
Africa																
Zimbabwe	1,041	231	500	11,079	92,681	142,694	148,969	98,011	53,601	38,876	27,704	11,362	6,156	6,782	3,083	642,770
South Africa	1,411	624	1,503	14,189	34,054	53,551	74,198	75,463	70,216	63,871	57,019	39,107	24,598	28,583	2,944	541,331
Botswana	337	200	1,144	5,792	10,074	26,395	51,598	52,650	38,716	33,715	25,851	15,229	8,140	5,945	851	276,637
Zambia	12	-	215	1,867	11,423	23,049	27,639	19,565	13,163	9,198	5,118	2,561	1,141	1,360	790	117,101
Namibia	85	80	524	2,981	7,695	9,898	12,177	12,569	10,983	10,095	7,352	4,599	2,241	2,881	321	84,481
Swaziland	-	-	10	170	561	760	781	681	724	441	255	110	60	52	41	4,646
Lesotho	30	-	31	120	400	511	536	521	310	531	342	221	80	80	20	3,733
Malawi	-	10	-	90	280	610	663	501	502	254	300	150	40	200	20	3,620
Kenya	-	-	-	50	101	290	520	372	271	272	161	60	40	60	20	2,217
Mozambique	30	10	10	70	110	253	240	193	291	172	121	42	40	40	20	1,642
Tanzania	10	-	-	21	110	161	321	214	161	204	241	91	40	10	-	1,584
Uganda	10	-	-	10	80	220	120	90	41	80	50	30	10	11	-	752
Angola	-	-	20	30	10	30	40	60	131	81	60	30	10	20	-	522
Mauritius	-	-	-	-	11	41	84	41	41	112	60	20	30	30	-	470
Nigeria	10	-	-	-	10	60	40	70	70	100	71	20	10	-	-	461
DRC	-	-	-	-	30	30	50	50	80	50	20	30	30	-	-	370
Ghana	-	-	-	-	-	-	20	40	20	30	30	10	20	-	-	170
Egypt	-	-	-	-	-	40	30	30	-	-	10	20	-	-	-	130
Ethiopia	-	-	-	-	-	30	10	2	32	10	10	10	-	-	10	114
Cameroon	-	-	-	-	20	10	20	-	-	20	40	-	-	-	-	110
Madagascar	-	-	-	-	-	10	-	30	10	30	-	20	-	-	-	100
Seychelles	-	-	-	-	-	30	10	20	30	-	10	-	-	-	-	100
Tunisia	-	-	-	-	-	-	-	-	-	30	10	30	-	-	-	70
Rwanda	-	-	-	-	10	-	10	-	-	10	-	-	-	-	10	40
Libya	-	-	-	-	-	10	-	-	10	10	-	-	10	-	-	40
Sierra Leone	-	-	-	-	-	-	-	10	10	10	-	10	-	-	-	40
Sudan	-	-	-	-	10	-	10	-	-	-	10	-	-	10	-	40
Other Africa	-	-	-	3	-	40	21	-	51	62	40	32	-	-	-	249

Table 17: Total Departure By Country of Residence and Age Group – 2006 (cont'd)

Country of Residence	0-4	5-9	10-14	15-19	20-24	25-29	30-34	35-39	40-44	45-49	50-54	55-59	60-64	65+	Not Stated	Total
America																
USA	47	23	47	1,073	2,180	2,426	2,347	1,920	2,287	2,735	2,556	3,670	4,591	9,057	207	35,166
Canada	10	-	20	75	364	516	348	348	234	370	379	423	544	741	1	4,373
Brazil	-	-	-	-	10	1	31	40	80	50	30	2	20	40	-	304
Mexico	-	-	-	41	11	10	41	-	20	21	20	-	40	50	-	254
Argentina	-	-	-	10	-	80	20	30	31	1	30	1	-	10	-	213
Cuba	-	-	-	-	-	-	41	10	-	10	20	10	-	-	-	91
Jamaica	-	-	-	-	-	-	-	-	11	-	-	10	-	50	-	71
Chile	-	-	-	10	-	-	10	-	-	10	1	10	-	-	-	41
Honduras	-	-	-	-	-	-	-	-	-	-	-	-	40	-	-	40
Colombia	-	-	-	-	-	-	-	-	10	-	20	-	-	10	-	40
Other America	-	-	-	20	70	3	91	32	31	30	40	40	40	52	-	449
Europe																
United Kingdom	10	10	42	874	2,647	2,867	3,185	2,376	2,222	2,217	2,323	2,763	2,764	3,162	94	27,556
Germany	-	-	33	273	708	1,561	1,961	2,002	2,600	1,965	1,986	1,735	1,916	3,378	144	20,262
Netherlands	1	1	40	134	681	1,693	1,810	1,085	659	1,043	1,056	1,311	1,144	1,069	111	11,838
France	11	-	71	212	310	625	872	684	758	810	778	1,019	918	851	100	8,019
Italy	-	20	11	70	144	408	1,147	723	513	441	461	419	438	529	10	5,334
Spain	-	-	-	50	72	431	761	852	544	574	434	392	243	361	40	4,754
Switzerland	10	-	30	42	135	307	565	452	397	368	437	296	396	507	-	3,942
Belgium Luxembourg	-	-	-	93	193	356	301	330	387	309	361	214	228	265	20	3,057
Denmark	-	-	-	50	200	173	180	83	153	156	166	250	232	312	10	1,965
Austria	-	-	-	10	50	141	223	157	96	226	264	203	287	281	-	1,938
Sweden	10	-	-	50	162	243	213	184	72	160	97	212	195	141	-	1,739
Norway	-	-	-	30	250	161	61	134	131	141	82	112	131	181	30	1,444
Ireland	-	-	-	10	140	232	330	171	72	91	71	107	71	51	-	1,346
Russia	-	-	10	10	10	160	150	111	120	171	161	60	10	2	-	975
Portugal	-	-	1	40	60	40	40	100	101	90	90	51	10	50	10	683
Czechoslovakia	-	-	-	-	-	82	82	10	32	52	51	61	60	51	10	491
Poland	-	-	-	10	30	-	61	61	51	80	82	20	40	30	-	465

Table 17: Total Departure By Country of Residence and Age Group – 2006 (cont'd)

Country of Residence	0-4	5-9	10-14	15-19	20-24	25-29	30-34	35-39	40-44	45-49	50-54	55-59	60-64	65+	Not Stated	Total
Europe																
Finland	-	-	-	11	20	102	90	20	10	41	14	72	31	30	-	441
Greece	-	-	-	-	-	-	30	11	40	1	40	10	11	71	40	254
Yugoslavia	-	-	10	-	20	20	-	10	-	20	10	20	20	20	-	150
Hungary	-	-	-	10	-	-	20	-	10	20	10	20	20	20	-	130
Luxembourg	-	-	-	-	10	10	10	30	-	10	-	20	-	10	-	100
Ukraine	-	-	-	10	-	10	-	10	20	10	10	10	-	-	-	80
Slovakia	-	-	-	-	10	-	31	-	-	-	-	-	30	-	-	71
Latvia	-	-	-	-	10	40	11	-	-	1	-	-	-	-	-	62
Bulgaria	-	-	-	10	-	-	10	10	20	-	-	10	-	-	-	60
Estonia	-	-	-	-	-	-	-	-	10	-	10	20	-	10	-	50
Romania	-	-	-	10	10	-	-	20	-	-	-	-	-	-	-	40
Lithuania	-	-	-	-	-	-	-	-	20	20	-	-	-	-	-	40
Croatia	-	-	-	-	-	10	-	-	10	-	10	-	-	-	10	40
Other Europe	-	-	-	-	-	20	30	10	30	20	-	-	11	10	-	131
Asia																
Japan	11		40	41	81	581	861	1,040	831	473	580	1,201	2,814	8,074	60	16,688
India	-		10	20	70	213	261	330	251	131	163	160	70	140	30	1,849
China	-		-	10	90	140	221	382	240	210	171	101	160	20	20	1,765
Korea	-		-	10	40	40	40	100	50	60	280	190	210	100	-	1,120
Israel	-		-	10	20	21	21	60	60	50	42	100	50	60	-	494
Taiwan	-		-	-	-	30	20	20	10	-	50	40	10	100	-	280
Singapore	-		-	10	20	10	60	70	41	10	30	21	-	-	-	272
Pakistan	-		-	10	-	20	10	21	31	21	40	20	10	20	-	203
Hong Kong	-		-	-	-	10	70	40	20	30	-	20	-	-	-	190
Malaysia	-		-	-	10	20	10	60	20	10	10	10	20	-	-	170
Bangladesh	-		-	10	30	40	-	20	10	20	10	-	20	-	-	160
Sri Lanka	-		-	-	-	10	10	20	41	10	-	30	-	20	-	141
Philippines	-		10	-	-	10	10	10	10	10	10	30	10	20	-	130
Thailand	-		-	10	1	10	10	22	21	-	10	-	20	-	-	104
Turkey	-		-	-	-	-	-	30	20	-	10	-	-	20	-	80

Table 17: Total Departure By Country of Residence and Age Group – 2006 (cont'd)

Country of Residence	0-4	5-9	10-14	15-19	20-24	25-29	30-34	35-39	40-44	45-49	50-54	55-59	60-64	65+	Not Stated	Total
Asia																
Cyprus	-	-	-	-	10	-	-	-	-	-	10	10	10	10	-	50
Iran	-	-	-	-	-	-	-	10	-	20	-	-	-	10	-	40
Other Asia	-	-	-	10	20	60	90	30	100	60	130	101	100	180	50	931
Oceania																
Australia	10	-	10	246	785	1,845	1,376	947	595	741	1,061	1,148	1,093	981	50	10,888
New Zealand	-	-	11	31	192	421	347	253	164	124	164	251	152	115	-	2,225
Other Oceania	-	-	-	-	-	-	10	-	-	-	-	20	30	-	-	60
Not Stated	424	92	307	2,061	10,984	15,787	18,186	16,366	14,144	13,505	12,248	8,580	5,076	7,113	1,106	125,979
Total	3,520	1,301	4,660	42,189	178,530	290,719	354,823	293,030	217,905	186,013	152,004	99,400	67,032	84,449	10,283	1,985,858
<i>Percent</i>	<i>0</i>	<i>0</i>	<i>0</i>	<i>2</i>	<i>9</i>	<i>15</i>	<i>18</i>	<i>15</i>	<i>11</i>	<i>9</i>	<i>8</i>	<i>5</i>	<i>3</i>	<i>4</i>	<i>1</i>	<i>100</i>

Table 18: Total Departures by Country of Residence and Month – 2006

Country of Residence	January	February	March	April	May	June	July	August	September	October	November	December	Total
Africa													
Zimbabwe	36,899	27,402	63,247	65,176	33,501	56,243	64,554	58,567	72,612	25,840	56,348	82,381	642,770
South Africa	44,531	28,266	40,513	51,474	40,856	37,840	44,642	40,747	51,796	44,892	40,421	75,353	541,331
Botswana	19,684	14,352	27,488	24,546	17,057	19,646	25,762	25,375	23,136	18,719	21,680	39,192	276,637
Zambia	9,737	7,600	9,270	14,306	4,357	8,665	9,064	7,826	16,158	10,653	8,896	10,569	117,101
Namibia	6,772	6,700	6,047	6,991	7,601	6,871	6,359	6,970	7,397	6,333	6,569	9,871	84,481
Swaziland	341	80	171	711	940	258	360	530	281	213	290	471	4,646
Lesotho	242	60	342	710	350	144	272	223	260	430	270	430	3,733
Malawi	282	290	320	410	202	271	232	190	272	230	390	531	3,620
Kenya	120	130	210	191	80	181	152	190	303	270	100	290	2,217
Mozambique	164	80	70	191	170	80	122	130	193	50	140	252	1,642
Tanzania	184	70	160	203	100	151	102	150	102	70	140	152	1,584
Uganda	40	50	90	91	20	30	60	60	70	91	40	110	752
Angola	11	30	40	151	20	40	20	40	60	40	40	30	522
Mauritius	21	34	51	50	61	50	10	31	50	21	60	31	470
Nigeria	10	20	31	50	90	50	40	20	20	50	40	40	461
DRC	10	50	20	70	40	-	20	30	80	10	10	30	370
Ghana	10	30	20	30	-	-	20	-	-	30	10	20	170
Egypt	-	10	20	-	10	-	-	-	10	40	10	30	130
Ethiopia	20	-	30	-	-	-	4	10	30	-	10	10	114
Cameroon	-	-	-	20	-	10	-	-	20	40	-	20	110
Madagascar	-	-	10	-	20	-	30	-	10	10	20	-	100
Seychelles	10	20	10	10	10	10	10	-	10	-	-	10	100
Tunisia	-	10	-	-	10	-	-	-	10	10	20	10	70
Rwanda	-	10	10	-	-	-	-	-	10	-	10	-	40
Libya	-	-	-	-	-	-	10	-	-	-	-	30	40
Sierra Leone	10	-	10	-	-	-	-	-	10	10	-	-	40
Sudan	10	-	-	-	-	-	-	-	10	-	-	20	40
Other Africa	23	20	-	50	21	40	22	10	10	30	10	13	249

Table 18: Total Departures by Country of Residence and Month – 2006 (cont'd)

Country of Residence	January	February	March	April	May	June	July	August	September	October	November	December	Total
America													
USA	1,571	1,456	2,590	1,196	1,796	4,363	4,672	3,161	6,850	3,312	1,861	2,338	35,166
Canada	354	472	446	471	244	174	274	166	890	364	235	283	4,373
Brazil	30	100	10	-	32	1	10	21	30	40	10	20	304
Mexico	-	10	31	20	-	20	21	-	20	-	70	62	254
Argentina	30	10	-	10	32	-	1	30	60	10	30	-	213
Cuba	-	20	-	10	10	10	-	-	1	30	-	10	91
Jamaica	11	-	-	-	-	-	-	-	60	-	-	-	71
Chile	10	-	-	10	10	-	10	-	-	-	-	1	41
Honduras	-	-	-	-	-	-	-	-	40	-	-	-	40
Colombia	-	-	-	20	-	-	-	-	-	20	-	-	40
Other America	101	20	12	31	32	41	60	30	30	40	30	22	449
Europe													
United Kingdom	1,600	1,709	3,276	4,096	1,622	1,415	2,030	2,184	3,220	2,664	1,933	1,807	27,556
Germany	1,030	1,068	1,653	1,417	809	741	1,054	1,694	4,368	3,428	1,749	1,251	20,262
Netherlands	582	500	832	588	278	483	1,188	1,224	2,532	1,789	974	868	11,838
France	252	360	981	600	567	299	630	1,271	997	965	589	508	8,019
Italy	323	224	231	232	266	304	554	1,689	630	478	209	194	5,334
Spain	30	72	430	542	70	201	260	1,000	1,364	403	262	120	4,754
Switzerland	200	125	335	193	137	140	224	204	1,042	775	363	204	3,942
Belgium Luxemburg	237	166	243	143	74	144	387	327	646	312	185	193	3,057
Denmark	172	183	270	52	60	63	222	80	292	298	193	80	1,965
Austria	67	165	50	110	41	120	70	222	438	377	106	172	1,938
Sweden	52	216	174	184	71	60	60	20	250	210	142	300	1,739
Norway	40	143	261	124	90	52	110	90	180	172	91	91	1,444
Ireland	60	122	142	60	100	100	180	61	184	184	103	50	1,346
Russia	250	60	100	70	90	50	20	60	130	54	41	50	975
Portugal	20	30	60	31	12	40	70	90	130	50	90	60	683
Czechoslovakia	40	12	20	-	1	22	60	10	164	80	82	-	491
Poland	3	20	91	51	10	20	40	70	90	20	30	20	465
Finland	40	30	61	52	30	4	20	-	110	50	24	20	441

Table 18: Total Departures by Country of Residence and Month – 2006 (cont'd)

Country of Residence	January	February	March	April	May	June	July	August	September	October	November	December	Total
Europe													
Greece	10	-	31	1	-	-	60	10	80	10	10	42	254
Yugoslavia	30	10	-	-	10	-	20	20	-	20	30	10	150
Hungary	-	-	10	-	-	-	-	-	20	10	10	80	130
Luxembourg	-	-	20	10	10	-	10	40	10	-	-	-	100
Ukraine	10	20	-	10	10	-	-	-	-	10	-	20	80
Slovakia	-	-	-	21	-	-	-	-	10	20	10	10	71
Latvia	22	-	-	-	-	-	-	-	40	-	-	-	62
Bulgaria	-	10	-	-	-	-	10	-	10	10	-	20	60
Estonia	-	-	10	-	-	-	-	10	-	20	-	10	50
Romania	-	-	-	10	-	-	-	10	-	20	-	-	40
Lithuania	-	-	-	-	-	-	-	-	-	-	-	40	40
Croatia	10	-	-	10	-	-	-	-	-	20	-	-	40
Other Europe	10	20	10	-	20	20	11	-	10	30	-	-	131
Asia													
Japan	240	410	1,110	441	630	429	500	450	8,571	2,916	540	451	16,688
India	110	120	162	332	160	90	160	170	140	153	61	191	1,849
China	100	170	141	150	100	90	110	150	252	200	162	140	1,765
Korea	40	-	60	50	-	-	40	100	550	80	30	170	1,120
Israel	40	31	20	20	20	20	-	10	190	70	52	21	494
Taiwan	130	20	-	-	-	-	10	60	20	10	20	10	280
Singapore	-	10	21	30	20	30	11	20	40	30	-	60	272
Pakistan	22	40	40	30	10	-	10	30	-	-	11	10	203
Hong Kong	10	-	-	-	-	10	40	10	50	50	20	-	190
Malaysia	10	-	10	20	-	10	30	20	50	10	10	-	170
Bangladesh	-	10	10	20	-	20	10	40	20	30	-	-	160
Sri Lanka	30	20	-	10	-	10	10	-	-	10	10	41	141
Philippines	10	-	20	10	-	-	20	10	30	20	-	10	130
Thailand	-	30	10	1	2	-	-	20	10	-	10	21	104
Turkey	-	-	10	-	-	-	-	50	10	-	-	10	80
Cyprus	-	10	-	-	-	-	-	10	10	10	-	10	50

Table 18: Total Departures by Country of Residence and Month – 2006 (cont'd)

Country of Residence	January	February	March	April	May	June	July	August	September	October	November	December	Total
Asia													
Iran	20	-	-	-	-	-	-	-	-	-	-	20	40
Other Asia	371	180	10	-	20	190	80	20	20	-	-	40	931
Oceania													
Australia	743	557	693	1,110	545	705	715	707	2,593	1,167	566	787	10,888
New Zealand	200	100	231	130	74	182	190	182	353	200	201	182	2,225
Other Oceania	-	-	-	-	30	-	20	10	-	-	-	-	60
Not Stated	9,603	7,522	9,891	10,053	9,607	8,562	5,642	9,165	16,134	11,819	9,506	18,475	125,979
Total	138,007	101,897	172,999	188,213	123,268	149,815	171,803	166,127	226,891	141,152	156,185	249,501	1,985,858

Table 19: Total Departures by Country of Residence and Border post - 2006

Country of Residence	Tlokweng	Sir Seretse khama Air	Parrshalt	Mamono	Sikwane	Ramotswa	Francistown	Ramokgwe bana road	Kazungula road	Maun	Mohembo	Plaatjan
Africa												
Zimbabwe	5,370	2,190	1,120	6,270	490	1,070	75	495,130	58,870	120	510	90
South Africa	115,720	23,600	13,110	23,820	15,090	19,500	2,162	25,540	26,480	4,160	3,790	10,190
Botswana	54,110	20,150	2,830	2,600	2,000	12,000	636	87,090	18,600	1,860	500	2,130
Zambia	2,670	710	30	250	10	110	63	1,290	14,550	50	70	-
Namibia	960	810	50	29,830	30	20	9	1,140	5,680	160	3,070	-
Swaziland	2,590	310	-	250	30	60	5	90	130	10	-	-
Lesotho	2,250	260	-	-	20	150	4	60	30	20	-	-
Malawi	880	470	10	80	-	-	1	940	90	20	-	10
Kenya	340	650	-	100	-	-	3	80	380	30	90	10
Mozambique	550	440	30	70	-	10	-	60	80	40	20	10
Tanzania	170	530	-	50	-	10	7	70	140	10	-	-
Uganda	130	220	-	40	-	10	1	30	20	-	-	10
Angola	40	340	-	20	-	-	-	-	20	10	10	-
Mauritius	80	290	-	-	-	20	5	10	-	10	-	-
Nigeria	90	320	10	10	-	-	-	-	-	-	-	-
Zaire	40	100	-	-	-	-	-	20	40	-	10	-
Ghana	10	100	-	-	-	-	-	20	20	10	-	-
Egypt	-	120	-	-	-	-	-	-	-	-	-	-
Ethiopia	10	90	-	-	-	-	-	-	-	-	10	-
Cameroon	-	80	-	10	-	-	-	10	-	-	-	-
Madagascar	-	90	-	-	-	-	-	-	-	-	-	-
Sycheles	10	40	-	-	-	-	-	-	-	10	-	-
Tunisia	-	60	-	-	-	-	-	-	-	-	-	-
Rwanda	10	10	-	-	-	-	-	-	-	-	-	-
Libya	10	30	-	-	-	-	-	-	-	-	-	-
Sierra Leone	10	20	-	-	-	-	-	-	-	-	-	-
Sudan	10	-	-	-	-	-	-	20	-	-	-	-
Other Africa	30	130	-	-	-	-	4	-	20	10	-	-

Table 19: Total Departures by Country of Residence and Border post – 2006 (cont'd)

Country of Residence	Tlokweng	Sir Seretse khama Air	Parrshalt	Mamono	Sikwane	Ramotswa	Francistown	Ramokgwe bana road	Kazungula road	Maun	Mohembo	Plaatjan
America												
USA	1,030	2,410	70	280	50	-	69	120	15,890	6,240	510	110
Canada	150	470	20	140	-	20	42	30	1,720	540	220	10
Brazil	10	120	-	10	-	-	1	-	10	60	40	-
Mexico	-	-	-	-	-	-	-	-	150	70	-	-
Argentina	10	10	-	10	-	-	-	-	90	20	20	-
Cuba	10	50	-	10	-	-	-	10	-	-	-	-
Jamaica	10	10	-	-	-	-	-	-	40	-	-	-
Chile	10	-	-	10	-	-	1	-	-	10	10	-
Honduras	-	-	-	-	-	-	-	-	40	-	-	-
Colombia	-	-	-	-	-	-	-	-	20	-	-	-
Other America	40	70	-	10	-	-	1	10	160	40	20	-
Europe												
United Kingdom	1,250	3,550	50	960	80	200	107	590	4,920	4,100	1,550	340
Germany	370	640	10	1,710	30	40	13	80	8,390	1,460	1,710	390
Netherlands	170	370	10	410	50	30	8	30	4,700	410	2,370	80
France	130	430	30	180	-	20	9	30	3,750	820	650	20
Italy	120	160	20	150	-	-	2	10	2,680	670	140	-
Spain	60	110	10	60	-	-	4	-	2,750	510	390	-
Switzerland	60	110	-	310	10	10	6	-	1,780	560	200	30
Belgium												
Luxemburg	20	240	-	90	-	-	3	10	1,400	260	260	-
Denmark	20	120	-	40	-	-	3	20	620	300	90	20
Austria	-	10	-	190	-	-	3	-	1,070	90	120	-
Sweden	80	260	10	70	20	-	2	10	650	110	120	10
Norway	120	200	10	50	-	-	8	-	520	100	50	-
Ireland	60	80	-	70	-	-	3	10	440	80	90	10
Russia	20	100	-	30	-	-	4	-	290	90	-	-
Portugal	70	140	-	20	-	10	2	10	190	120	-	-
Czechoslovakia	-	10	-	20	-	-	-	-	180	60	60	-
Poland	10	10	-	10	-	-	-	-	330	10	40	-
Finland	-	40	-	10	10	-	5	10	250	40	-	-

Table 19: Total Departures by Country of Residence and Border post – 2006 (cont'd)

Country of Residence	Tlokweg	Sir Seretse khama Air	Parrshalt	Mamono	Sikwane	Ramotswa	Francistown	Ramokgwe bana road	Kazungula road	Maun	Mohembo	Plaatjan
Europe												
Greece	-	20	-	-	-	10	-	10	180	20	-	-
Yugoslavia	60	40	-	-	-	-	-	-	20	-	-	-
Hungary	-	-	-	-	-	-	-	-	100	-	10	-
Luxembourg	-	-	-	20	-	-	-	-	-	20	10	-
Ukraine	10	-	-	20	-	-	-	-	-	10	-	-
Slovakia	10	20	-	-	-	-	-	-	20	-	-	-
Latvia	-	-	-	-	-	-	-	-	40	-	-	-
Bulgaria	10	30	-	-	-	-	-	-	-	-	-	-
Estonia	-	10	-	10	-	-	-	-	-	20	-	-
Romania	10	10	-	-	-	-	-	-	10	-	-	-
Lithuania	-	-	-	-	-	-	-	-	40	-	-	-
Croatia	-	10	-	-	-	-	-	-	-	-	-	-
Other Europe	-	30	-	-	-	-	-	-	20	40	-	-
Asia												
Japan	50	160	-	10	-	-	-	10	16,060	90	20	-
India	490	700	-	-	-	100	1	20	140	20	-	-
China	220	770	-	10	-	20	-	30	570	50	10	-
Korea	50	50	-	-	-	10	-	-	940	10	40	-
Israel	30	160	-	10	-	-	1	-	180	10	10	-
Taiwan	20	-	-	-	-	-	-	-	200	-	10	-
Singapore	50	110	-	-	-	-	-	-	20	50	10	-
Pakistan	50	40	-	-	-	-	3	-	-	10	-	-
Hong Kong	-	40	-	-	-	-	-	-	60	70	-	-
Malaysia	30	70	-	-	-	-	-	-	30	-	10	-
Bangladesh	20	30	-	-	-	-	-	-	20	-	-	-
Sri Lanka	10	70	-	10	-	-	1	-	40	-	-	-
Philippines	30	40	-	-	-	10	-	-	-	20	-	-
Thailand	30	40	-	-	-	-	-	-	-	-	-	-
Turkey	-	10	-	-	-	-	-	-	10	10	-	-

Table 19: Total Departures by Country of Residence and Border post – 2006 (cont'd)

Country of Residence	Tlokweng	Sir Seretse khama Air	Parrshalt	Mamono	Sikwane	Ramotswa	Francistown	Ramokgwe bana road	Kazungula road	Maun	Mohembo	Plaatjan
Asia												
Cyprus	10	10	-	-	-	-	-	-	-	-	-	-
Iran	10	10	-	-	-	-	-	-	20	-	-	-
Other Asia	-	60	-	20	-	10	-	-	750	20	-	-
Oceania												
Australia	240	610	30	450	10	-	138	100	4,690	730	960	-
New Zealand	60	80	-	140	-	20	7	40	790	170	200	10
Other Oceania	-	-	-	-	-	-	-	-	60	-	-	-
Not Stated	21,410	3,610	1,020	1,850	1,730	1,510	185	16,540	12,690	870	1,040	650
Total	212,830	68,720	18,480	70,800	19,660	34,980	3,607	629,330	215,880	25,540	19,070	14,130

Table 19: Total Departures by Country of Residence and Border post - 2006 (cont'd)

Country of Residence	Point Drift	Ngoma	Selibe Phikwe air	Zanzibar	Makopong	Martins Drift	Orapa	Panda matenge	Kazungula ferry	Kasane air	Sowa Air	Phitshane Molopo
Africa												
Zimbabwe	30	5,270	7	28	3	3,590	6	223	2,000	11	2	400
South Africa	5,200	3,230	180	1,944	702	58,250	588	1,107	11,120	315	476	23,720
Botswana	620	710	85	788	112	16,790	209	147	10,140	340	166	1,790
Zambia	20	290	2	7	1	13,200	5	2	81,640	4	-	30
Namibia	-	11,010	29	10	5	790	1	7	380	35	-	10
Swaziland	-	-	-	-	-	380	-	-	130	4	1	10
Lesotho	-	10	-	-	2	40	-	-	70	2	-	-
Malawi	-	10	-	1	-	280	2	-	410	2	3	10
Kenya	-	50	-	-	-	20	-	-	370	1	-	-
Mozambique	-	20	-	-	-	160	-	3	50	6	-	-
Tanzania	-	-	-	1	-	60	-	-	500	3	1	-
Uganda	-	10	-	-	-	30	-	-	160	1	-	-
Angola	-	20	-	1	-	-	-	-	50	1	-	-
Mauritius	-	-	-	-	-	10	-	-	10	2	-	-
Nigeria	-	-	-	-	-	-	-	-	10	-	-	10
DRC	-	-	-	-	-	40	-	-	100	-	-	-
Ghana	-	-	-	-	-	10	-	-	-	-	-	-
Egypt	-	-	-	-	-	-	-	-	10	-	-	-
Ethiopia	-	-	-	-	-	-	-	-	-	-	-	-
Cameroon	-	-	-	-	-	-	-	-	-	-	-	-
Madagascar	-	-	-	-	-	-	-	-	10	-	-	-
Seychelles	-	-	-	-	-	-	-	-	40	-	-	-
Tunisia	-	-	-	-	-	-	-	-	-	-	-	-
Rwanda	-	-	-	-	-	-	-	-	10	-	-	-
Libya	-	-	-	-	-	-	-	-	-	-	-	-
Sierra Leone	-	-	-	-	-	-	-	-	-	-	-	-
Sudan	-	-	-	-	-	-	-	-	-	-	-	-
Other Africa	-	-	-	-	-	-	-	-	40	2	-	-

Table 19: Total Departures by Country of Residence and Border post - 2006 (cont'd)

Country of Residence	Point Drift	Ngoma	Selibe Phikwe air	Zanzibar	Makopong	Martins drift	Orapa	Panda matenge	Kazungula ferry	Kasane air	Sowa Air	Phitshane Molopo
America												
USA	330	180	2	19	3	700	4	18	3,940	528	1	20
Canada	20	70	2	5	-	220	-	12	400	67	-	-
Brazil	-	-	-	1	-	10	-	-	10	-	-	-
Mexico	-	-	-	-	-	10	-	-	20	4	-	-
Argentina	-	-	-	-	-	40	-	-	10	1	-	-
Cuba	-	-	-	1	-	-	-	-	-	-	-	-
Jamaica	-	-	-	-	-	-	-	-	10	1	-	-
Chile	-	-	-	-	-	-	-	-	-	-	-	-
Honduras	-	-	-	-	-	-	-	-	-	-	-	-
Colombia	-	-	-	-	-	-	-	-	20	-	-	-
Other America	-	-	-	-	-	10	-	1	60	6	-	10
Europe												
United Kingdom	580	600	12	15	-	1,110	5	18	5,050	156	8	10
Germany	190	1,200	-	14	3	980	5	36	1,780	55	1	-
Netherlands	250	540	-	41	-	500	-	9	1,340	19	-	-
France	150	140	-	3	-	200	6	11	1,080	38	-	-
Italy	100	60	-	-	-	160	7	2	660	9	-	-
Spain	30	160	2	-	-	40	-	-	480	10	-	-
Switzerland	110	180	-	5	-	120	5	4	200	21	-	-
Belgium Luxemburg	180	40	-	8	-	90	-	2	340	7	-	10
Denmark	300	10	-	2	-	40	-	-	130	9	-	-
Austria	20	110	-	2	-	70	-	-	170	7	-	-
Sweden	30	10	-	3	-	30	-	-	200	14	-	-
Norway	40	20	-	1	-	90	-	1	140	3	-	-
Ireland	20	20	-	1	-	70	-	-	300	-	1	-
Russia	-	10	-	-	-	-	-	-	370	1	-	-
Portugal	-	-	-	-	-	40	-	-	-	1	-	-
Czechoslovakia	10	20	-	1	-	10	-	2	90	2	-	-
Poland	-	10	-	-	-	-	-	-	30	4	-	-

Table 19: Total Departures by Country of Residence and Border post - 2006 (cont'd)

Country of Residence	Point Drift	Ngoma	Selibe Phikwe air	Zanzibar	Makopong	Martins Drift	Orapa	Panda matenge	Kazungula ferry	Kasane air	Sowa Air	Phitshane Molopo
Europe												
Finland	-	-	-	6	-	10	-	-	20	-	-	-
Greece	-	-	-	-	-	-	-	-	-	4	-	-
Yugoslavia	-	-	-	-	-	10	-	-	20	-	-	-
Hungary	-	-	-	-	-	10	-	-	10	-	-	-
Luxembourg	-	10	-	-	-	10	-	-	10	-	-	-
Ukraine	-	-	-	-	-	-	-	-	40	-	-	-
Slovakia	-	-	-	-	-	10	-	-	10	1	-	-
Latvia	-	-	-	-	-	10	-	-	10	-	-	-
Bulgaria	10	-	-	-	-	10	-	-	-	-	-	-
Estonia	-	-	-	-	-	-	-	-	10	-	-	-
Romania	-	-	-	-	-	-	-	-	-	-	-	-
Lithuania	-	-	-	-	-	-	-	-	-	-	-	-
Croatia	-	10	-	-	-	10	-	-	-	-	-	-
Other Europe	-	10	-	-	-	10	-	-	20	1	-	-
Asia												
Japan	-	30	-	-	-	50	-	-	170	4	-	-
India	-	-	1	1	-	30	3	1	70	-	-	-
China	20	-	-	-	-	-	-	-	10	-	-	-
Korea	-	-	-	-	-	10	-	-	10	-	-	-
Israel	-	-	-	-	-	30	2	-	60	-	-	-
Taiwan	-	-	-	-	-	-	-	-	20	-	-	-
Singapore	-	-	-	-	-	-	-	1	30	-	-	-
Pakistan	-	-	-	-	-	-	-	-	10	-	-	-
Hong Kong	-	-	-	-	-	10	-	-	10	-	-	-
Malaysia	-	-	-	-	-	10	-	-	10	-	-	-
Bangladesh	-	-	-	-	-	-	-	-	10	-	-	-
Sri Lanka	-	-	-	-	-	10	-	-	-	-	-	-
Philippines	-	-	-	-	-	-	-	-	20	-	-	-
Thailand	-	-	1	-	-	-	-	-	30	1	-	-

Table 19: Total Departures by Country of Residence and Border post - 2006 (cont'd)

Country of Residence	Point Drift	Ngoma	Selibe Phikwe air	Zanzibar	Makopong	Martins Drift	Orapa	Panda matenge	Kazungula ferry	Kasane air	Sowa Air	Phitshane Molopo
Asia												
Turkey	-	-	-	-	-	-	-	-	50	-	-	-
Cyprus	-	-	-	-	-	20	-	-	-	-	-	-
Iran	-	-	-	-	-	-	-	-	-	-	-	-
Other Asia	-	-	-	1	-	-	-	-	40	-	-	-
Oceania												
Australia	40	220	7	4	2	1,050	4	18	1,180	60	3	-
New Zealand	10	80	-	-	-	240	-	3	230	6	-	-
Other Oceania	-	-	-	-	-	-	-	-	-	-	-	-
Not Stated	370	2,090	40	105	88	16,230	39	127	11,780	102	34	2,710
Total	8,680	26,460	370	3,019	921	115,970	891	1,755	137,970	1,871	697	28,740

Table 19: Total Departures by Country of Residence and Border post - 2006 (cont'd)

Country of Residence	Bray	Ramatla bama road	Pioneer gate	Ghanzi air	Jwaneng air	Bokspits	Boshoek	Tsabong	Kasane	Ramokgwe bana rail	Maitengwe	Matsiloje
Africa												
Zimbabwe	4	2,750	1,440	-	2	-	-	3	220	31,090	12,450	11,670
South Africa	2,273	67,310	62,200	41	137	1,744	90	1,975	1,660	110	3,830	6,310
Botswana	1,219	17,700	15,700	3	72	179	3	285	830	1,070	570	2,250
Zambia	4	820	450	-	6	-	2	-	750	40	-	20
Namibia	21	2,680	15,260	7	-	65	-	6	11,710	-	20	-
Swaziland	-	70	540	-	2	2	-	-	10	-	-	20
Lesotho	-	560	250	-	-	1	-	2	-	-	-	-
Malawi	-	220	150	-	-	-	-	-	-	30	-	-
Kenya	2	60	20	-	-	-	-	-	10	-	-	-
Mozambique	-	10	80	-	-	-	-	-	-	-	-	-
Tanzania	-	30	-	-	-	-	-	-	-	-	-	-
Uganda	-	40	50	-	-	-	-	-	-	-	-	-
Angola	-	-	10	-	-	-	-	-	-	-	-	-
Mauritius	-	-	30	-	-	-	-	3	-	-	-	-
Nigeria	-	-	10	-	-	-	-	-	-	-	-	-
DRC	-	10	10	-	-	-	-	-	-	-	-	-
Ghana	-	-	-	-	-	-	-	-	-	-	-	-
Egypt	-	-	-	-	-	-	-	-	-	-	-	-
Ethiopia	-	-	-	-	-	-	-	-	-	-	-	-
Cameroon	-	10	-	-	-	-	-	-	-	-	-	-
Madagascar	-	-	-	-	-	-	-	-	-	-	-	-
Seychelles	-	-	-	-	-	-	-	-	-	-	-	-
Tunisia	-	-	-	-	-	-	-	-	-	-	10	-
Rwanda	-	-	10	-	-	-	-	-	-	-	-	-
Libya	-	-	-	-	-	-	-	-	-	-	-	-
Sierra Leone	-	10	-	-	-	-	-	-	-	-	-	-
Sudan	-	-	10	-	-	-	-	-	-	-	-	-
Other Africa	1	10	-	-	-	-	-	-	-	-	-	-

Table 19: Total Departures by Country of Residence and Border post - 2006 (cont'd)

Country of Residence	Bray	Ramatla bama road	Pioneer gate	Ghanzi air	Jwaneng air	Bokspits	Boshoek	Tsabong	Kasane	Ramokgwe bana rail	Maitengwe	Matsiloje
America												
USA	6	50	330	1	7	2	-	1	880	-	-	-
Canada	-	60	40	-	-	1	-	6	70	-	-	-
Brazil	-	-	20	-	-	-	-	-	10	-	-	-
Mexico	-	-	-	-	-	-	-	-	-	-	-	-
Argentina	-	-	-	-	-	-	-	-	-	-	-	-
Cuba	-	-	10	-	-	-	-	-	-	-	-	-
Jamaica	-	-	-	-	-	-	-	-	-	-	-	-
Chile	-	-	-	-	-	-	-	-	-	-	-	-
Honduras	-	-	-	-	-	-	-	-	-	-	-	-
Colombia	-	-	-	-	-	-	-	-	-	-	-	-
Other America	-	-	10	-	-	1	-	-	-	-	-	-
Europe												
United Kingdom	19	200	440	3	1	23	-	6	1,020	20	10	-
Germany	-	90	250	-	4	62	-	9	540	30	-	-
Netherlands	-	30	240	2	-	30	-	12	140	10	-	-
France	-	40	60	-	-	8	-	-	180	10	-	-
Italy	-	10	90	-	-	34	-	11	170	-	-	10
Spain	-	30	80	-	-	3	-	-	20	-	-	-
Switzerland	-	40	60	-	1	9	-	-	60	-	-	-
Belgium Luxemburg	-	-	20	-	-	15	-	11	10	-	-	10
Denmark	-	-	20	-	-	-	-	-	180	-	-	10
Austria	-	-	20	-	-	6	-	-	30	-	-	-
Sweden	-	10	50	-	-	1	-	-	40	-	-	-
Norway	-	10	20	-	-	-	-	1	60	-	-	-
Ireland	-	-	30	-	-	-	-	1	50	-	-	-
Russia	-	20	40	-	-	-	-	-	-	-	-	-
Portugal	-	-	40	-	-	-	-	-	30	10	-	-
Czechoslovakia	4	-	-	-	-	1	-	-	20	-	-	-
Poland	-	-	10	-	-	-	-	-	-	-	-	-

Table 19: Total Departures by Country of Residence and Border post - 2006 (cont'd)

Country of Residence	Bray	Ramatla bama road	Pioneer gate	Ghanzi air	Jwaneng air	Bokspits	Boshoek	Tsabong	Kasane	Ramokgwe bana rail	Maitengwe	Matsiloje
Europe												
Finland	-	10	30	-	-	-	-	-	-	-	-	-
Greece	-	-	10	-	-	-	-	-	-	-	-	-
Yugoslavia	-	-	-	-	-	-	-	-	-	-	-	-
Hungary	-	-	-	-	-	-	-	-	-	-	-	-
Luxembourg	-	-	-	-	-	-	-	-	20	-	-	-
Ukraine	-	-	-	-	-	-	-	-	-	-	-	-
Slovakia	-	-	-	-	-	-	-	-	-	-	-	-
Latvia	-	-	-	-	-	-	-	2	-	-	-	-
Bulgaria	-	-	-	-	-	-	-	-	-	-	-	-
Estonia	-	-	-	-	-	-	-	-	-	-	-	-
Romania	-	10	-	-	-	-	-	-	-	-	-	-
Lithuania	-	-	-	-	-	-	-	-	-	-	-	-
Croatia	-	-	10	-	-	-	-	-	-	-	-	-
Other Europe	-	-	-	-	-	-	-	-	-	-	-	-
Asia												
Japan	-	-	10	-	5	-	-	-	10	-	-	-
India	-	100	170	-	-	-	-	-	-	-	-	-
China	1	10	30	-	-	1	-	1	10	-	-	-
Korea	-	-	-	-	-	-	-	-	-	-	-	-
Israel	-	-	-	-	-	-	-	-	-	-	-	-
Taiwan	-	20	10	-	-	-	-	-	-	-	-	-
Singapore	-	-	-	-	-	-	-	1	-	-	-	-
Pakistan	-	-	90	-	-	-	-	-	-	-	-	-
Hong Kong	-	-	-	-	-	-	-	-	-	-	-	-
Malaysia	-	10	-	-	-	-	-	-	-	-	-	-
Bangladesh	-	-	80	-	-	-	-	-	-	-	-	-
Sri Lanka	-	-	-	-	-	-	-	-	-	-	-	-
Philippines	-	10	-	-	-	-	-	-	-	-	-	-
Thailand	-	-	-	-	-	-	-	-	-	-	-	-

Table 19: Total Departures by Country of Residence and Border post - 2006 (cont'd)

Country of Residence	Bray	Ramatla bama road	Pioneer gate	Ghanzi air	Jwaneng air	Bokspits	Boshoek	Tsabong	Kasane	Ramokgwe bana rail	Maitengwe	Matsiloje
Asia												
Turkey	-	-	-	-	-	-	-	-	-	-	-	-
Cyprus	-	-	10	-	-	-	-	-	-	-	-	-
Iran	-	-	-	-	-	-	-	-	-	-	-	-
Other Asia	-	10	20	-	-	-	-	-	-	-	-	-
Oceania												
Australia	7	30	70	1	-	2	-	-	170	-	10	-
New Zealand	-	20	60	-	-	-	1	1	40	-	-	-
Other Oceania	-	-	-	-	-	-	-	-	-	-	-	-
Not Stated	352	6,730	7,360	4	18	386	1	31	1,180	5,460	4,270	2,390
Total	3,913	99,840	106,060	62	255	2,576	97	2,368	20,130	37,880	21,170	22,690

Table 19: Total Departures by Country of Residence and Border post - 2006 (cont'd)

Country of Residence	Middlepits	Two rivers	Limpopo valley	Dobe	Kwando	Shakawe	Total
Africa							
Zimbabwe	13	1	7	9	236	-	642,770
Republic of South Africa	1,593	1,356	495	88	45	80	541,331
Botswana	205	39	72	28	9	-	276,637
Zambia	2	3	-	-	-	-	117,101
Namibia	9	27	2	598	40	-	84,481
Swaziland	1	1	-	-	-	-	4,646
Lesotho	2	-	-	-	-	-	3,733
Malawi	1	-	-	-	-	-	3,620
Kenya	-	1	-	-	-	-	2,217
Mozambique	3	-	-	-	-	-	1,642
Tanzania	2	-	-	-	-	-	1,584
Uganda	-	-	-	-	-	-	752
Angola	-	-	-	-	-	-	522
Mauritius	-	-	-	-	-	-	470
Nigeria	-	1	-	-	-	-	461
DRC	-	-	-	-	-	-	370
Ghana	-	-	-	-	-	-	170
Egypt	-	-	-	-	-	-	130
Ethiopia	-	-	4	-	-	-	114
Cameroon	-	-	-	-	-	-	110
Madagascar	-	-	-	-	-	-	100
Seychelles	-	-	-	-	-	-	100
Tunisia	-	-	-	-	-	-	70
Rwanda	-	-	-	-	-	-	40
Libya	-	-	-	-	-	-	40
Sierra Leone	-	-	-	-	-	-	40
Sudan	-	-	-	-	-	-	40
Other Africa	-	-	-	-	2	-	249

Table 19: Total Departures by Country of Residence and Border post - 2006 (cont'd)

Country of Residence	Middlepits	Two rivers	Limpopo valley	Dobe	Kwando	Shakawe	Total
America							
United States America	2	6	110	3	1,244	-	35,166
Canada	1	5	12	15	5	-	4,373
Brazil	-	-	2	-	-	-	304
Mexico	-	-	-	-	-	-	254
Argentina	-	2	-	-	-	-	213
Cuba	-	-	-	-	-	-	91
Jamaica	-	-	-	-	-	-	71
Chile	-	-	-	-	-	-	41
Honduras	-	-	-	-	-	-	40
Colombia	-	-	-	-	-	-	40
Other America	-	-	-	-	-	-	449
Europe							
United Kingdom	8	21	161	4	359	-	27,556
Germany	2	64	22	54	28	-	20,262
Netherlands	5	21	-	4	7	-	11,838
France	-	11	1	2	10	-	8,019
Italy	1	35	13	-	10	-	5,334
Spain	-	-	5	-	-	-	4,754
Switzerland	2	9	27	8	5	-	3,942
Belgium Luxemburg	-	13	12	3	3	-	3,057
Denmark	-	1	30	-	-	-	1,965
Austria	-	4	5	7	4	-	1,938
Sweden	-	-	6	-	3	-	1,739
Norway	-	-	-	-	-	-	1,444
Ireland	-	-	8	1	1	-	1,346
Russia	-	-	-	-	-	-	975
Portugal	-	-	-	-	-	-	683
Czechoslovakia	-	-	-	-	1	-	491
Poland	-	-	1	-	-	-	465
Finland	-	-	-	-	-	-	441

Table 19: Total Departures by Country of Residence and Border post - 2006 (cont'd)

Country of Residence	Middlepits	Two rivers	Limpopo valley	Dobe	Kwando	Shakawe	Total
Europe							
Greece	-	-	-	-	-	-	254
Yugoslavia	-	-	-	-	-	-	150
Hungary	-	-	-	-	-	-	130
Luxembourg	-	-	-	-	-	-	100
Ukraine	-	-	-	-	-	-	80
Slovakia	-	-	-	-	-	-	71
Latvia	-	-	-	-	-	-	62
Bulgaria	-	-	-	-	-	-	60
Estonia	-	-	-	-	-	-	50
Romania	-	-	-	-	-	-	40
Lithuania	-	-	-	-	-	-	40
Croatia	-	-	-	-	-	-	40
Other Europe	-	-	-	-	-	-	131
Asia							
Japan	-	-	-	-	9	-	16,688
India	2	-	-	-	-	-	1,849
China	-	-	-	-	2	-	1,765
Korea	-	-	-	-	-	-	1,120
Israel	-	-	1	-	-	-	494
Taiwan	-	-	-	-	-	-	280
Singapore	-	-	-	-	-	-	272
Pakistan	-	-	-	-	-	-	203
Hong Kong	-	-	-	-	-	-	190
Malaysia	-	-	-	-	-	-	170
Bangladesh	-	-	-	-	-	-	160
Sri Lanka	-	-	-	-	-	-	141
Philippines	-	-	-	-	-	-	130
Thailand	-	-	2	-	-	-	104
Turkey	-	-	-	-	-	-	80

Table 19: Total Departures by Country of Residence and Border post - 2006 (cont'd)

Country of Residence	Middlepits	Two rivers	Limpopo valley	Dobe	Kwando	Shakawe	Total
Asia							
Cyprus	-	-	-	-	-	-	50
Iran	-	-	-	-	-	-	40
Other Asia	-	-	-	-	-	-	931
Oceania							
Australia	4	2	11	33	2	-	10,888
New Zealand	-	-	4	-	13	-	2,225
Other Oceania	-	-	-	-	-	-	60
Not Stated	365	312	24	163	113	-	125,979
Total	2,223	1,935	1,037	1,020	2,151	80	1,985,858

Table 20: Total Departures By Border Post and Month - 2006

Border Post	January	February	March	April	May	June	July	August	September	October	November	December	Total	<i>Percent</i>
Ramokgwebana road	32,500	22,930	67,160	66,230	31,370	56,490	63,360	62,440	55,070	18,380	56,030	97,370	629,330	<i>32</i>
Kazungula road	15,120	15,620	20,760	11,140	4,190	12,440	19,020	15,010	63,560	18,120	4,200	16,700	215,880	<i>11</i>
Tlokweng	19,980	4,620	18,960	20,110	21,220	11,220	19,500	18,410	19,910	18,970	18,740	21,190	212,830	<i>11</i>
Kazungula ferry	9,890	6,450	11,830	18,340	3,640	10,460	11,580	12,230	15,660	14,870	10,010	13,010	137,970	<i>7</i>
Martins Drift	11,250	8,050	9,480	16,940	10,020	9,390	1,780	4,270	11,100	10,720	10,160	12,810	115,970	<i>6</i>
Pioneer	10,080	7,120	7,920	9,840	8,220	7,580	9,980	11,640	5,890	8,840	8,070	10,880	106,060	<i>5</i>
Ramatlabama road	9,290	6,910	8,080	9,820	7,890	1,190	5,200	3,590	7,160	9,710	7,800	23,200	99,840	<i>5</i>
Mamono	5,130	4,040	4,760	6,800	5,450	5,850	6,400	5,780	5,910	5,360	5,260	10,060	70,800	<i>4</i>
Ramotswa	2,550	1,400	2,160	3,630	2,740	2,790	3,650	2,920	3,470	3,000	2,770	3,900	34,980	<i>2</i>
Phitshane Molopo	460	2,870	460	430	3,780	4,020	620	3,450	4,650	3,810	3,650	540	28,740	<i>1</i>
Ngoma	2,550	2,130	2,500	1,340	2,750	2,670	1,250	1,180	2,730	1,170	2,880	3,310	26,460	<i>1</i>
Matsiloje	860	1,060	1,290	2,710	1,830	1,750	1,780	1,620	920	1,090	1,160	6,620	22,690	<i>1</i>
Maitengwe	1,260	1,380	1,400	2,100	1,490	1,180	1,740	330	3,430	1,630	1,290	3,940	21,170	<i>1</i>
Kasane	1,250	3,140	1,460	1,400	1,610	1,500	1,730	1,700	1,590	1,520	1,570	1,660	20,130	<i>1</i>
Sikwane	2,750	1,070	1,410	2,140	1,300	1,260	1,660	1,520	1,750	1,810	1,230	1,760	19,660	<i>1</i>
Mohembo	960	810	820	1,100	1,000	1,260	2,310	2,430	1,440	3,850	1,500	1,590	19,070	<i>1</i>
Parrshalt	3,170	1,030	1,110	2,070	1,420	1,400	1,560	1,380	1,440	1,250	1,050	1,600	18,480	<i>1</i>
Plaatjan	510	1,350	180	670	730	460	700	470	4,630	410	3,390	630	14,130	<i>1</i>
Point Drift	620	490	710	660	590	610	880	960	860	980	650	670	8,680	<i>0</i>
Bray	328	276	313	389	333	305	398	332	311	308	254	366	3,913	<i>0</i>
Zanzibar	246	393	48	355	164	303	477	345	50	293	256	89	3,019	<i>0</i>
Bokspits	211	111	198	289	220	252	44	327	267	226	162	269	2,576	<i>0</i>
Tsabong	306	171	267	66	310	42	62	398	47	338	305	56	2,368	<i>0</i>
Middlepits	48	99	99	302	239	226	283	203	195	220	83	226	2,223	<i>0</i>
Kwando	91	182	134	207	66	247	230	346	112	135	63	338	2,151	<i>0</i>
Two rivers	118	79	140	257	179	207	327	120	171	90	100	147	1,935	<i>0</i>

Table 20: Total Departures By Border Post and Month – 2006 (cont'd)

Border Post	January	February	March	April	May	June	July	August	September	October	November	December	Total	Percent
Pandamatenge	64	276	37	209	76	171	239	151	195	119	76	142	1,755	0
Limpopo Valley	19	48	49	32	73	37	78	102	73	126	56	344	1,037	0
Dobe	24	38	60	105	91	172	155	149	68	20	42	96	1,020	0
Makopong	77	47	69	82	60	42	89	72	74	104	77	128	921	0
Boshoek	-	10	19	-	5	5	18	-	23	-	-	17	97	0
Shakawe	-	-	-	-	-	-	-	-	-	80	-	-	80	0
Sir Seretse Khama Air	4,350	5,880	6,980	6,110	5,450	5,950	5,820	3,610	6,420	5,930	6,150	6,070	68,720	3
Maun airport	1,350	1,090	1,580	1,900	2,130	2,320	2,470	2,960	2,720	3,000	2,530	1,490	25,540	1
Francistown airport	170	284	351	286	385	789	52	43	408	440	42	357	3,607	0
Kasane airport	301	300	47	44	56	485	62	68	106	57	45	300	1,871	0
Orapa airport	55	71	51	51	144	77	119	71	78	97	50	27	891	0
Sowa Airport	54	58	66	31	62	70	62	61	70	64	62	37	697	0
Selibe Phikwe air	15	5	24	17	20	53	69	17	54	50	24	22	370	0
Jwaneng airport	-	9	17	11	35	26	24	32	31	42	28	-	255	0
Ghanzi airport	-	-	-	-	-	6	25	-	18	13	-	-	62	0
Ramokgwebana rail	-	-	-	-	1,930	4,510	6,000	5,390	4,230	3,910	4,370	7,540	37,880	2
Total	138,007	101,897	172,999	188,213	123,268	149,815	171,803	166,127	226,891	141,152	156,185	249,501	1,985,858	100

Table 21: Total Departures by Month and mode of Travel - 2006

Month	Road	Air	Rail	Other	Not Stated	Total
January	131,661	6,326	20	-	-	138,007
February	93,868	7,774	10	245	-	101,897
March	162,727	9,200	112	260	700	172,999
April	179,300	8,520	92	58	243	188,213
May	112,720	8,388	2,042	117	1	123,268
June	133,852	9,897	4,551	1,515	-	149,815
July	156,743	9,040	6,020	-	-	171,803
August	152,866	7,431	5,410	400	20	166,127
September	211,130	11,987	2,112	222	1,440	226,891
October	123,868	10,017	3,930	1,117	2,220	141,152
November	142,775	8,999	4,410	1	-	156,185
December	232,842	8,990	6,690	120	859	249,501
Total	1,834,352	106,569	35,399	4,055	5,483	1,985,858
<i>Percent</i>	<i>92.4</i>	<i>5.4</i>	<i>1.8</i>	<i>0.2</i>	<i>0.3</i>	<i>100.0</i>