



**Statistics Botswana**  
Private Bag 0024, Gaborone, Botswana  
Tel: (267) 3671300, Fax (267) 3952201,  
Email: [csobots@gov.bw](mailto:csobots@gov.bw), Website: [www.cso.gov.bw](http://www.cso.gov.bw)

---

*All correspondence should be addressed to Statistician General*

---

## **CONSUMER PRICE STATISTICS – MAY 2012**

### **CONTENTS**

#### **COMMENTARY**

- 1. Section 1: Headline Inflation**
- 2. Section 2: Core Inflation**

#### **CHARTS**

- 1. National Rates of Inflation, January 2009 – May 2012**
- 2. Monthly Changes in the Cost-of-Living Index, January 2009 – May 2012**
- 3. Non-Tradeables Inflation Rates, January 2009 – May 2012**
- 4. Tradeables Inflation Rates, January 2009 - May 2012**

#### **TABLES**

- 1. Cost-of-Living Index Series (January 2009 – May 2012)**
- 2. National Cost-of-Living Group and Section Indices**
- 3. Cost-of-Living Index by Tradeability (January 2009 – May 2012)**
- 4. Core Inflation Rates**

**CONTACT STATISTICIAN: *PHALADI LABOBEDI***

**PRICE STATISTICS UNIT, TEL: *3671300*, EXT: *1360/61/77/97***

**EMAIL: [plabobedi@gov.bw](mailto:plabobedi@gov.bw)**

***“Figures that inform and help you make decisions”***

## COMMENTARY-MAY 2012 CONSUMER PRICE INDEX (CPI)

### Section 1: Headline Inflation

In May 2012, national year-on-year inflation rate stood at 7.7 percent, up by 0.2 of a percentage point from 7.5 percent in April 2012. The cities and towns' inflation rate went up by 0.7 of a percentage point from 7.3 percent in April to 8.0 percent in May. The rural villages' inflation rate registered a drop of 0.2 of a percentage point from 7.4 percent in April to 7.2 percent in May. The urban villages' inflation stood at 7.7 percent, the same rate as in April.

The May national Consumer Price Index was 159.0, registering an increase of 1.3 percent on the April index of 156.9. The cities and towns' index moved from 156.0 to 158.6 between April and May, recording an increase of 1.7 percent. The urban villages' index went up by 1.0 percent, from 156.6 to 158.2 between the two months, while the rural villages' index rose from 159.8 to 161.3, recording an increase of 0.9 percent.

Three group indices recorded changes of at least 1.0 percent between April and May – *Housing, Water, Electricity, Gas & Other Fuels (3.5 percent)*, *Transport (2.6 percent)* and *Alcoholic Beverages, Tobacco & Narcotics (1.8 percent)*.

The *Housing, Water, Electricity, Gas & Other Fuels* group index recorded an increase of 3.5 percent, from 142.4 in April to 147.4 in May. This was mainly due to an increase in the constituent section index of *Water Supply & Miscellaneous Services*, which went up by 48.2 percent. The increase in *Water Supply & Miscellaneous Services* section index was attributed to the revised water tariffs, which were effected on 1<sup>st</sup> May 2012.

The *Transport* group index registered an increase of 2.6 percent, from 153.8 in April to 157.8 in May. This was due to a rise in the constituent section indices of *Operation of Personal Transport*, which went up by 4.5 percent. The increase in *Operation of Personal Transport* section index was attributed to the rise in retail pump prices for both petrol and diesel by P0.50 per litre, which was effected on the 13<sup>th</sup> May 2012.

The *Alcoholic Beverages, Tobacco & Narcotics* group index rose by 1.8 percent from 201.2 to 204.7 between the two months. This was due to increases in the constituent section indices of *Alcoholic Beverages (1.9 percent)* and *Tobacco (0.8 percent)*.

The *Food & Non-Alcoholic Beverages* index group moved from 177.0 to 178.4, registering an increase of 0.8 percent between April and May. The increase was attributed to the general rise in the constituent section indices, notably, *Bread & Cereals (1.4 Percent)*, *Sugar, Jam, Honey, Chocolate & Confectionery (1.2 Percent)*, *Fish (Fresh, Chilled & Frozen) (1.0 Percent)*, *Coffee, Tea & Cocoa (0.9 Percent)*, *Food not elsewhere classified (0.9 percent)* and *Mineral Waters, Soft Drinks, Fruit & Veg Juices (0.6 percent)*.

The *All-Tradeables* inflation rate for May stood at 8.1 percent, down by 0.2 of a percentage point on the April rate of 8.3 percent. *Non-Tradeables* inflation rate was 6.5 percent in May, up by 1.2 percentage points on the April rate of 5.3 percent. The *Imported Tradeables* inflation rate registered a drop of 0.5 of a percentage point, from 8.2 to 7.7 percent, while the *Domestic Tradeables* inflation rate went up by 0.4 of a percentage point between April and May, from 8.5 to 8.9 percent.

The *All-Tradeables* index went up by 1.3 percent, from 163.2 in April to 165.3 in May. The *Imported Tradeables* index rose by 1.4 percent, from 156.7 to 158.9 between the two months. The *Non-Tradeables* index recorded an increase of 1.2 percent, from 142.4 in April to 144.2 in May. The *Domestic Tradeables* index was 178.0 in May, up by 1.1 percent on the April level of 176.0.

### Section 2: Core Inflation

The Trimmed Mean Core Inflation rate stood at 7.3 percent in May, the same rate as in April. The Core Inflation rate by exclusion went down by 0.1 of a percentage point from 6.6 to 6.5 percent between April and May.

Chart 1: National Inflation Rate 2009 - 2012

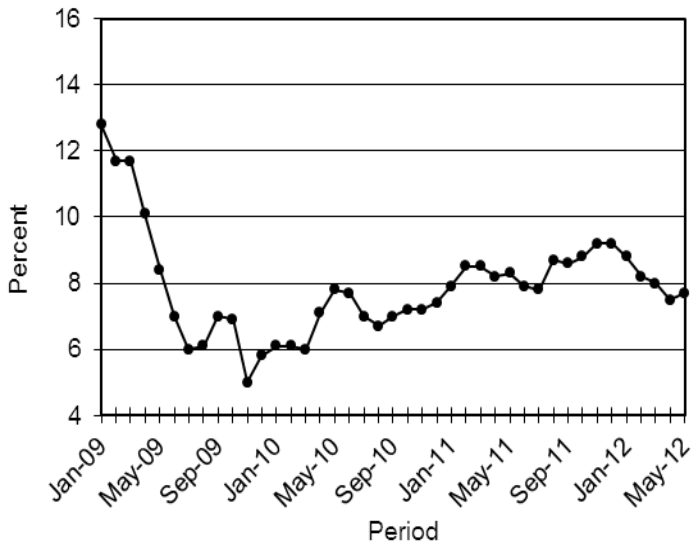


Chart 2: Monthly Changes in Cost-of-Living Index 2009 - 2012

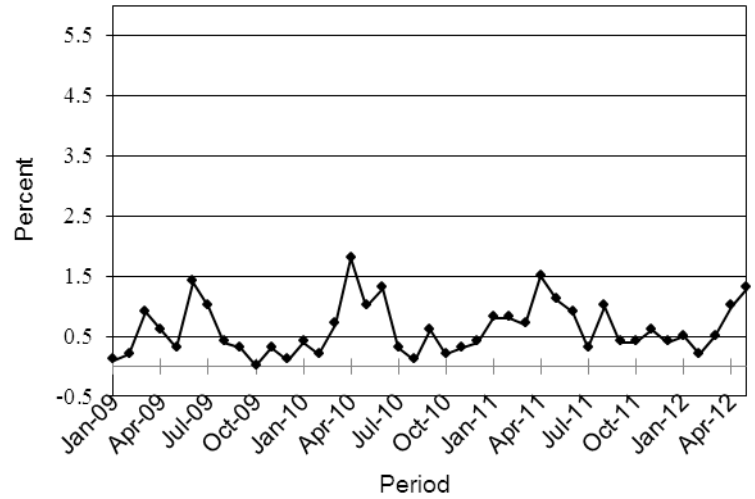


Chart 3: Non-Tradeable Inflation 2009 - 2012

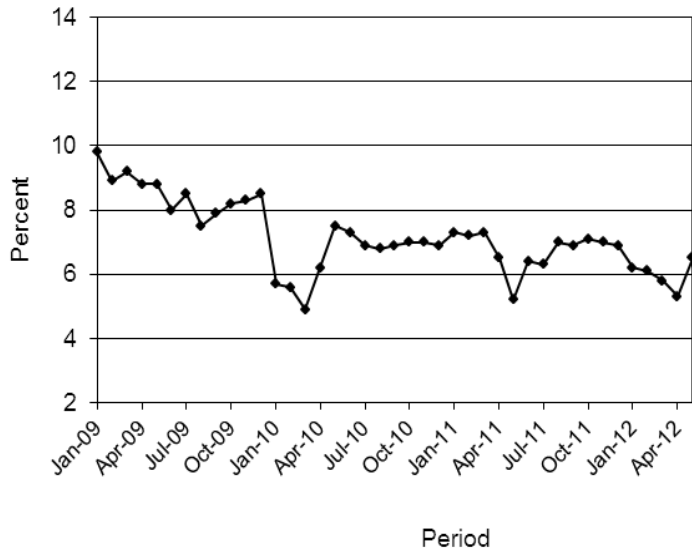
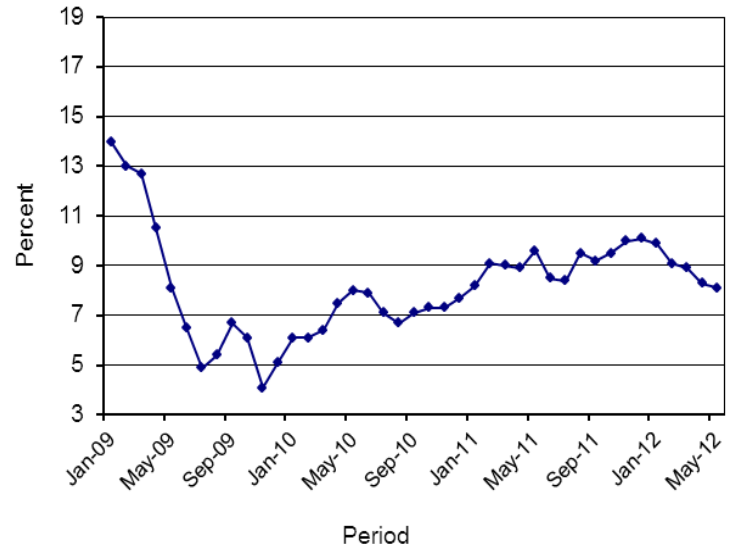


Chart 4 Tradeables Inflation 2009 - 2012



*M.P.K.*

M. P. Kerekang  
 For Acting Statistician General  
 15<sup>th</sup> June 2012

**TABLE 1: COST OF LIVING INDEX (September 2006 =100.0)**

		Food	Alcohol and Tobacco	Clothing and Footwear	Housing	Furn- iture etc	Health	Trans- port	Commun ication	Rec. & Culture	Educati on	Rest. & Hotels	Other
Weights		21.84	9.29	7.52	11.46	6.76	2.71	18.98	3.01	2.22	3.37	3.27	9.57
(1)	(2)	(3)	(4)	(5)	(6)	(7)	(8)	(9)	(10)	(11)	(12)	(13)	(14)
<b>2009</b>	Jan	145.8	159.7	108.7	114.8	118.2	123.3	107.5	94.7	103.8	113.7	143.5	108.8
	Feb	146.2	161.0	108.6	114.7	118.2	123.2	107.6	94.7	103.6	113.8	145.1	108.9
	Mar	148.2	162.2	109.6	116.5	120.1	123.3	107.9	94.7	103.6	113.8	147.9	108.8
	Apr	148.8	163.2	110.8	116.4	122.7	123.7	108.4	94.7	105.0	113.8	148.8	110.4
	May	149.2	163.4	111.8	116.4	123.7	123.8	108.8	94.6	106.6	113.8	150.4	110.4
	Jun	149.4	163.7	112.5	117.6	125.6	123.9	115.2	94.6	107.1	113.8	153.1	111.5
	July	151.5	164.6	115.5	118.1	127.4	124.2	115.5	94.6	108.8	113.8	154.2	112.9
	Aug	151.7	164.5	115.8	118.1	127.4	124.3	117.6	94.6	109.1	113.8	154.7	113.1
	Sept	151.7	164.7	116.1	120.0	127.8	124.3	118.1	94.6	109.2	113.8	154.5	113.2
	Oct	151.6	164.9	116.1	119.9	128.1	124.3	118.3	94.6	109.2	113.8	153.9	113.2
	Nov	151.9	165.8	117.0	119.9	129.0	124.8	118.6	94.7	109.5	113.8	155.2	113.3
	Dec	151.0	166.0	116.6	120.3	129.9	125.0	119.6	94.6	109.6	113.8	155.3	113.6
<b>2010</b>	Jan	151.1	165.8	116.9	119.9	130.6	124.9	120.6	94.6	109.9	120.4	155.6	114.4
	Feb	151.1	166.0	117.3	120.0	131.2	125.2	121.0	94.6	110.3	120.4	156.5	114.6
	Mar	152.4	167.6	118.9	121.2	133.1	125.4	121.2	94.6	110.8	120.4	158.3	115.0
	Apr	154.4	174.1	119.9	121.8	134.3	127.3	123.4	95.4	111.1	120.4	162.7	119.5
	May	156.0	176.7	120.5	126.3	135.0	127.6	123.6	95.4	111.4	120.5	164.4	119.7
	Jun	156.1	177.4	121.4	126.8	137.1	127.8	130.2	96.4	111.5	120.5	165.9	120.8
	July	156.4	177.4	122.9	127.3	138.0	128.1	130.3	96.4	115.6	120.5	166.6	121.0
	Aug	156.8	177.6	123.6	127.5	138.5	128.2	129.6	96.4	115.8	120.5	167.5	121.1
	Sept	156.7	179.1	125.0	127.7	139.3	128.3	131.6	96.4	116.1	120.5	168.8	121.4
	Oct	156.7	179.7	126.3	127.9	139.6	128.4	131.7	96.4	116.5	120.5	170.6	121.5
	Nov	157.2	180.4	127.4	128.1	140.4	128.4	131.8	96.4	116.7	120.5	171.8	121.5
	Dec	157.6	182.1	127.1	128.8	141.7	128.6	132.2	96.4	116.9	120.5	171.9	121.7
<b>2011</b>	Jan	158.2	183.4	127.5	129.1	142.3	128.7	133.7	96.4	117.1	133.2	172.7	122.6
	Feb	159.1	183.9	127.9	129.4	142.9	128.8	137.5	96.4	117.6	133.2	172.9	122.6
	Mar	160.5	186.0	128.5	130.9	144.6	129.1	137.7	96.4	118.5	133.2	173.7	122.8
	Apr	164.4	188.5	131.0	131.1	145.3	133.0	139.0	96.4	123.4	133.2	175.5	125.7
	May	165.8	191.3	132.1	131.8	146.7	133.3	142.8	91.2	124.1	133.2	179.3	126.1
	Jun	166.6	191.9	133.1	137.6	148.9	133.6	143.3	91.2	124.4	133.2	182.5	126.6
	Jul	167.0	192.2	134.4	138.2	149.5	133.6	143.4	91.2	124.5	133.2	183.4	126.7
	Aug	167.9	192.4	135.1	138.9	150.4	133.7	148.7	91.2	124.7	133.2	183.7	126.8
	Sept	168.8	192.4	135.8	140.0	152.9	133.9	148.8	91.2	124.8	133.2	184.5	126.9
	Oct	169.8	192.8	136.4	140.6	153.9	136.0	149.4	91.2	125.3	133.2	184.6	127.1
	Nov	170.7	192.9	137.2	141.2	154.3	136.1	152.6	91.2	125.3	133.2	185.3	127.2
	Dec	171.8	192.8	138.8	141.8	155.2	136.4	152.6	91.2	125.4	133.2	186.0	127.2
<b>2012</b>	Jan	172.3	193.5	139.6	141.9	155.6	136.5	153.4	91.2	125.6	141.5	187.1	127.7
	Feb	173.3	193.6	140.2	142.0	155.9	136.9	153.5	91.2	125.7	141.5	187.5	127.7
	Mar	174.6	196.0	140.7	142.4	156.6	137.2	153.5	91.2	125.9	141.7	189.5	127.7
	Apr	177.0	201.2	140.9	142.4	157.5	141.0	153.8	91.7	130.2	141.7	192.7	128.2
	May	178.4	204.7	141.3	147.4	158.1	141.3	157.8	91.7	130.3	141.7	193.7	128.3
<b>% Change on Last month</b>		<b>0.8</b>	<b>1.8</b>	<b>0.3</b>	<b>3.5</b>	<b>0.4</b>	<b>0.2</b>	<b>2.6</b>	<b>0.0</b>	<b>0.1</b>	<b>0.0</b>	<b>0.5</b>	<b>0.0</b>

**TABLE 1: COST OF LIVING INDEX(Cont.)**

	All Items Index	National Inflation Rate	Monthly Change	Towns & Cities Index	Urban Village Index	Rural Villages Index	Annual Inflation		
		%	%	47.33	33.76	18.91	Towns & Cities %	Urban Villages %	Rural %
<b>2009</b>									
Jan	123.8	<b>12.8</b>	<b>0.1</b>	121.6	123.9	129.3	<b>11.5</b>	<b>12.5</b>	<b>16.3</b>
Feb	124.1	<b>11.7</b>	<b>0.2</b>	122.0	124.1	129.4	<b>10.5</b>	<b>11.9</b>	<b>14.7</b>
Mar	125.2	<b>11.7</b>	<b>0.9</b>	123.0	125.2	130.6	<b>10.3</b>	<b>12.2</b>	<b>14.9</b>
Apr	126.0	<b>10.2</b>	<b>0.7</b>	123.7	126.1	131.7	<b>8.4</b>	<b>10.4</b>	<b>14.3</b>
May	126.4	<b>8.4</b>	<b>0.3</b>	124.0	126.3	132.5	<b>6.5</b>	<b>8.7</b>	<b>13.4</b>
Jun	128.2	<b>7.0</b>	<b>1.4</b>	126.3	128.0	133.5	<b>5.2</b>	<b>7.3</b>	<b>11.9</b>
Jul	129.4	<b>6.0</b>	<b>1.0</b>	127.3	129.4	134.9	<b>4.0</b>	<b>6.3</b>	<b>11.5</b>
Aug	130.0	<b>6.1</b>	<b>0.4</b>	127.9	129.9	135.2	<b>4.1</b>	<b>6.2</b>	<b>11.0</b>
Sept	130.3	<b>7.0</b>	<b>0.3</b>	128.3	130.3	135.4	<b>5.4</b>	<b>7.1</b>	<b>10.8</b>
Oct	130.4	<b>6.9</b>	<b>0.1</b>	128.5	130.2	135.1	<b>5.8</b>	<b>6.9</b>	<b>9.5</b>
Nov	130.8	<b>5.0</b>	<b>0.3</b>	128.9	130.5	135.9	<b>4.6</b>	<b>5.1</b>	<b>6.0</b>
Dec	130.9	<b>5.8</b>	<b>0.1</b>	129.3	130.5	135.5	<b>6.1</b>	<b>5.7</b>	<b>5.4</b>
<b>2010</b>									
Jan	131.4	<b>6.1</b>	<b>0.4</b>	129.8	131.2	135.8	<b>6.7</b>	<b>5.9</b>	<b>5.1</b>
Feb	131.7	<b>6.1</b>	<b>0.2</b>	130.1	131.2	136.4	<b>6.6</b>	<b>5.8</b>	<b>5.4</b>
Mar	132.6	<b>6.0</b>	<b>0.7</b>	131.0	131.8	138.3	<b>6.5</b>	<b>5.2</b>	<b>5.9</b>
Apr	135.0	<b>7.1</b>	<b>1.8</b>	133.5	134.0	140.4	<b>7.9</b>	<b>6.3</b>	<b>6.6</b>
May	136.3	<b>7.8</b>	<b>1.0</b>	134.8	135.4	141.6	<b>8.7</b>	<b>7.2</b>	<b>6.9</b>
Jun	138.1	<b>7.7</b>	<b>1.3</b>	137.0	137.0	142.8	<b>8.5</b>	<b>7.0</b>	<b>7.0</b>
July	138.6	<b>7.0</b>	<b>0.3</b>	137.4	137.6	143.2	<b>7.9</b>	<b>6.4</b>	<b>6.2</b>
Aug	138.7	<b>6.7</b>	<b>0.1</b>	137.8	137.6	142.7	<b>7.7</b>	<b>5.9</b>	<b>5.6</b>
Sept	139.4	<b>7.0</b>	<b>0.6</b>	138.6	138.7	143.0	<b>8.0</b>	<b>6.4</b>	<b>5.6</b>
Oct	139.7	<b>7.2</b>	<b>0.2</b>	138.8	139.1	143.0	<b>8.0</b>	<b>6.8</b>	<b>5.9</b>
Nov	140.1	<b>7.2</b>	<b>0.3</b>	139.5	139.3	143.2	<b>8.2</b>	<b>6.7</b>	<b>5.4</b>
Dec	140.6	<b>7.4</b>	<b>0.4</b>	139.8	139.9	144.0	<b>8.1</b>	<b>7.2</b>	<b>6.2</b>
<b>2011</b>									
Jan	141.8	<b>7.9</b>	<b>0.8</b>	141.3	141.0	144.5	<b>8.8</b>	<b>7.5</b>	<b>6.4</b>
Feb	142.9	<b>8.5</b>	<b>0.8</b>	142.4	142.2	145.5	<b>9.5</b>	<b>8.4</b>	<b>6.6</b>
Mar	143.8	<b>8.5</b>	<b>0.7</b>	143.2	143.2	146.6	<b>9.3</b>	<b>8.7</b>	<b>6.0</b>
Apr	146.0	<b>8.2</b>	<b>1.5</b>	145.3	145.5	148.8	<b>8.9</b>	<b>8.5</b>	<b>6.0</b>
May	147.6	<b>8.3</b>	<b>1.1</b>	146.9	146.9	150.5	<b>9.0</b>	<b>8.5</b>	<b>6.2</b>
Jun	149.0	<b>7.9</b>	<b>0.9</b>	148.4	148.1	152.0	<b>8.3</b>	<b>8.1</b>	<b>6.4</b>
Jul	149.3	<b>7.8</b>	<b>0.3</b>	148.9	148.3	152.3	<b>8.4</b>	<b>7.7</b>	<b>6.3</b>
Aug	150.8	<b>8.7</b>	<b>1.0</b>	150.4	149.8	153.4	<b>9.1</b>	<b>8.9</b>	<b>7.5</b>
Sept	151.4	<b>8.6</b>	<b>0.4</b>	150.9	150.6	153.9	<b>8.9</b>	<b>8.6</b>	<b>7.6</b>
Oct	152.0	<b>8.8</b>	<b>0.4</b>	151.4	151.5	154.6	<b>9.0</b>	<b>8.9</b>	<b>8.1</b>
Nov	153.0	<b>9.2</b>	<b>0.6</b>	152.4	152.7	155.0	<b>9.3</b>	<b>9.6</b>	<b>8.2</b>
Dec	153.5	<b>9.2</b>	<b>0.4</b>	152.9	153.1	155.9	<b>9.4</b>	<b>9.4</b>	<b>8.3</b>
<b>2012</b>									
Jan	154.3	<b>8.8</b>	<b>0.5</b>	153.5	154.0	157.0	<b>8.6</b>	<b>9.2</b>	<b>8.6</b>
Feb	154.7	<b>8.2</b>	<b>0.2</b>	153.7	154.4	157.6	<b>8.0</b>	<b>8.6</b>	<b>8.3</b>
Mar	155.4	<b>8.0</b>	<b>0.5</b>	154.3	155.1	158.6	<b>7.8</b>	<b>8.3</b>	<b>8.2</b>
Apr	156.9	<b>7.5</b>	<b>1.0</b>	156.0	156.6	159.8	<b>7.3</b>	<b>7.7</b>	<b>7.4</b>
May	159.0	<b>7.7</b>	<b>1.3</b>	158.6	158.2	161.3	<b>8.0</b>	<b>7.7</b>	<b>7.2</b>
<b>% Change on last month</b>	<b>1.3</b>			<b>1.7</b>	<b>1.0</b>	<b>0.9</b>			

**Table 2: National Cost-of-Living Group & Section Indices (September 2006 = 100.0)**

TABLE 2 :National Cost-of-Living Group and Section Indices (September 2006=100.0)										
Group Section	Weights	This month May 2012	Last month Apr 2012	3 months ago Feb 2012	6 months ago Nov 2011	12 months ago May 2011	Percentage Change on:			
		Last month	3 months ago	6 months ago	12 months ago					
<b>1 Food &amp; Non-Alcoholic Beverages</b>	<b>21.84</b>	<b>178.4</b>	<b>177.0</b>	<b>173.3</b>	<b>170.7</b>	<b>165.8</b>	<b>0.8</b>	<b>2.9</b>	<b>4.5</b>	<b>7.6</b>
1.1 Bread & Cereals	6.51	177.3	174.9	169.3	164.6	159.1	1.4	4.7	7.7	11.5
1.2 Meat (Fresh, Chilled & Frozen)	3.15	183.5	183.0	179.4	176.2	171.0	0.3	2.3	4.2	7.3
1.3 Fish (Fresh, Chilled & Frozen)	0.20	176.8	175.0	171.7	170.2	166.8	1.0	3.0	3.9	6.0
1.4 Milk, Cheese & Milk Products	2.19	180.4	180.2	178.7	178.1	186.9	0.1	1.0	1.3	(3.5)
1.5 Oils & Fats	0.90	213.8	213.5	211.8	206.3	202.7	0.1	0.9	3.6	5.5
1.6 Fruit	0.67	125.3	125.0	123.5	118.9	113.0	0.2	1.5	5.4	10.9
1.7 Vegetables	1.94	175.2	174.2	170.8	173.7	163.9	0.5	2.5	0.9	6.9
1.8 Sugar, Jam, Honey, Chocolate & Confectionery	1.36	183.0	180.8	177.1	174.8	164.1	1.2	3.3	4.7	11.5
1.9 Food not else where Classified	2.36	178.6	177.0	175.7	173.8	166.1	0.9	1.6	2.7	7.5
1.10 Coffee, Tea & Cocoa	0.63	197.0	195.3	193.1	190.1	182.1	0.9	2.0	3.7	8.2
1.11 Mineral Waters, Soft Drinks, Fruits & Veg. Juices	1.94	167.2	166.2	161.0	159.2	154.2	0.6	3.8	5.1	8.5
<b>2 Alcoholic Beverages, Tobacco &amp; Narcotics</b>	<b>9.29</b>	<b>204.7</b>	<b>201.2</b>	<b>193.6</b>	<b>192.9</b>	<b>191.3</b>	<b>1.8</b>	<b>5.7</b>	<b>6.1</b>	<b>7.0</b>
2.1 Alcoholic Beverages	8.09	204.7	200.9	193.3	192.7	191.3	1.9	5.9	6.2	7.0
2.2 Tobacco	1.20	204.8	203.2	195.7	194.4	191.2	0.8	4.6	5.4	7.1
<b>3 Clothing and Footwear</b>	<b>7.52</b>	<b>141.3</b>	<b>140.9</b>	<b>140.2</b>	<b>137.2</b>	<b>132.1</b>	<b>0.3</b>	<b>0.8</b>	<b>3.0</b>	<b>7.0</b>
3.1 Clothing	3.33	160.9	160.5	159.8	155.5	148.7	0.3	0.7	3.5	8.2
3.2 Other articles of Clothing	1.82	126.7	126.5	125.8	122.5	118.2	0.2	0.7	3.4	7.2
3.3 Cleaning, Repair & Hire	0.03	173.7	170.9	169.8	167.1	160.9	1.7	2.3	3.9	7.9
3.4 Footwear	2.34	124.3	123.9	123.1	121.9	118.8	0.3	0.9	1.9	4.6
<b>4 Housing, Water, Electr. Gas &amp; Other Fuels</b>	<b>11.46</b>	<b>147.4</b>	<b>142.4</b>	<b>142.0</b>	<b>141.2</b>	<b>131.8</b>	<b>3.5</b>	<b>3.8</b>	<b>4.4</b>	<b>11.8</b>
4.1 Rent paid by Tenants	5.68	128.4	128.4	127.7	126.8	124.1	0.0	0.5	1.3	3.5
4.2 Materials for Maintenance & Repair of dwellings	2.57	142.0	141.9	141.2	140.6	135.4	0.1	0.5	1.0	4.8
4.3 Water Supply & Misc. Services	1.14	151.4	102.2	102.2	102.2	102.2	48.2	48.2	48.2	48.2
4.4 Electricity Gas and other Fuels	2.06	204.0	203.8	204.0	203.0	164.8	0.1	(0.0)	0.5	23.7
<b>5 Furnishing, H/H Equipment &amp; Routine Maintenance</b>	<b>6.76</b>	<b>158.1</b>	<b>157.5</b>	<b>155.9</b>	<b>154.3</b>	<b>146.7</b>	<b>0.4</b>	<b>1.4</b>	<b>2.5</b>	<b>7.8</b>
5.1 Furniture & Furnishing	2.31	134.0	133.0	131.5	129.9	123.0	0.7	1.9	3.1	8.9
5.2 Carpets & Other Floor Coverings	0.04	146.6	146.2	145.8	144.6	142.6	0.2	0.5	1.3	2.7
5.3 Household Textiles	0.44	147.6	147.0	145.5	143.3	137.6	0.4	1.4	3.0	7.2
5.4 Household Appliances	0.69	134.3	133.3	132.7	131.3	127.8	0.8	1.2	2.3	5.1
5.5 Glassware, Tableware & Household Utensils	0.44	162.8	162.7	160.7	158.0	155.2	0.1	1.3	3.0	4.9
5.6 Small Tools, Miscellaneous Accessories	0.06	166.7	166.6	165.4	164.0	161.1	0.0	0.8	1.6	3.5
5.7 Goods & Services for H/hold Maintenance	2.79	184.9	184.6	182.6	181.1	170.8	0.2	1.3	2.1	8.3

**Table 2: National Cost-of-Living Group & Section Indices (September 2006 = 100.0) (Cont.)**

<b>6</b>	<b>Health</b>	<b>2.71</b>	<b>141.3</b>	<b>141.0</b>	<b>136.9</b>	<b>136.1</b>	<b>133.3</b>	<b>0.2</b>	<b>3.2</b>	<b>3.8</b>	<b>6.0</b>
6.1	Medical Products, App. & Equip.	0.35	162.0	159.7	155.0	150.9	141.9	1.4	4.5	7.4	14.2
6.2	Out-patient Services	0.66	145.9	145.9	133.0	131.8	124.8	0.0	9.7	10.7	16.9
6.3	Hospital Services	1.71	135.3	135.3	134.7	134.7	134.7	0.0	0.4	0.4	0.4
<b>7</b>	<b>Transport</b>	<b>18.98</b>	<b>157.8</b>	<b>153.8</b>	<b>153.5</b>	<b>152.6</b>	<b>142.8</b>	<b>2.6</b>	<b>2.8</b>	<b>3.4</b>	<b>10.5</b>
7.1	Purchase of Vehicles	5.89	148.9	148.9	148.8	146.7	144.8	0.0	0.1	1.5	2.9
7.2	Operation of Personal Transport	10.92	161.9	155.0	154.5	154.2	140.8	4.5	4.8	5.0	15.0
7.3	Transport Services	2.17	160.9	160.9	160.9	160.3	147.6	0.0	0.0	0.4	9.0
<b>8</b>	<b>Communication</b>	<b>3.01</b>	<b>91.7</b>	<b>91.7</b>	<b>91.2</b>	<b>91.2</b>	<b>91.2</b>	<b>0.0</b>	<b>0.6</b>	<b>0.6</b>	<b>0.6</b>
8.1	Postal Services	0.04	209.9	209.9	170.8	170.8	170.8	0.0	22.9	22.9	22.9
8.2	Telephone & Telefax Equipment	0.74	66.6	66.6	66.6	66.6	66.6	0.0	0.0	0.0	0.0
8.3	Telephone & Telefax Services	2.23	97.9	97.9	97.9	97.9	97.9	0.0	0.0	0.0	0.0
<b>9</b>	<b>Recreation &amp; Culture</b>	<b>2.22</b>	<b>130.3</b>	<b>130.2</b>	<b>125.7</b>	<b>125.3</b>	<b>124.1</b>	<b>0.1</b>	<b>3.7</b>	<b>4.0</b>	<b>5.0</b>
9.1	Audio Visual, Photographic & Info. Proce. Equip.	1.09	103.6	103.4	102.6	102.4	102.3	0.2	0.9	1.2	1.2
9.2	Other Recreational Items & Equip.	0.18	150.6	150.2	150.1	148.8	144.3	0.3	0.4	1.2	4.4
9.3	Recreational & Cultural Services	0.76	148.4	148.4	137.4	137.5	136.4	0.0	7.9	7.9	8.8
9.4	Newspapers, Books & Stationary	0.19	190.1	189.9	186.1	183.5	179.2	0.1	2.2	3.6	6.1
<b>10</b>	<b>Education</b>	<b>3.37</b>	<b>141.7</b>	<b>141.7</b>	<b>141.5</b>	<b>133.2</b>	<b>133.2</b>	<b>0.0</b>	<b>0.1</b>	<b>6.4</b>	<b>6.4</b>
10.1	Pre-Primary & Primary Education	1.10	173.5	173.4	173.0	154.5	154.5	0.0	0.3	12.3	12.3
10.2	Secondary & Tertiary Education	2.26	126.2	126.2	126.2	122.8	122.8	0.0	0.0	2.8	2.8
<b>11</b>	<b>Restaurants &amp; Hotels</b>	<b>3.27</b>	<b>193.7</b>	<b>192.7</b>	<b>187.5</b>	<b>185.3</b>	<b>179.3</b>	<b>0.5</b>	<b>3.3</b>	<b>4.5</b>	<b>8.0</b>
11.1	Restaurants, Cafes and the Like	3.08	196.1	195.2	189.8	187.7	181.6	0.5	3.3	4.5	8.0
11.2	Accommodation Services	0.19	153.7	151.5	149.8	146.4	141.9	1.4	2.6	5.0	8.4
<b>12</b>	<b>Miscellaneous Goods &amp; Services</b>	<b>9.57</b>	<b>128.3</b>	<b>128.2</b>	<b>127.7</b>	<b>127.2</b>	<b>126.1</b>	<b>0.0</b>	<b>0.5</b>	<b>0.9</b>	<b>1.7</b>
12.1	Personal Care	0.66	149.2	149.1	147.1	146.9	141.4	0.1	1.4	1.6	5.6
12.2	Personal Effects N.E.C.	0.04	127.2	127.1	126.4	123.1	118.5	0.1	0.6	3.3	7.3
12.3	Social Protection	0.14	147.8	147.8	146.8	146.8	146.8	0.0	0.7	0.7	0.7
12.4	Insurance	6.32	129.6	129.6	129.6	128.9	128.6	0.0	0.0	0.5	0.8
12.5	Financial Services	0.18	139.7	138.6	137.7	135.9	131.3	0.8	1.5	2.8	6.4
12.6	Taxes Licences, Fees	2.24	116.3	116.2	114.7	114.4	113.2	0.1	1.4	1.6	2.7
	<b>All-Items Index</b>	<b>100.0</b>	<b>159.0</b>	<b>156.9</b>	<b>154.7</b>	<b>153.0</b>	<b>147.6</b>	<b>1.3</b>	<b>2.8</b>	<b>3.9</b>	<b>7.7</b>

**TABLE 3: COST-OF-LIVING INDEX BY TRADEABILITY (September 2006 = 100.0)**

		All Items		Non-Tradeables		Domestic Tradeables		Imported Tradeables		All Tradeables	
		Index	Inflation	Index	Inflation	Index	Inflation	Index	Inflation	Index	Inflation
Weights		100.00		30.92		23.91		45.17		69.08	
<b>2009</b>	Jan	123.8	<i>12.8</i>	117.1	<i>9.8</i>	145.1	<i>23.3</i>	117.2	<i>8.4</i>	126.8	<i>14.0</i>
	Feb	124.1	<i>11.7</i>	117.4	<i>8.9</i>	146.3	<i>23.2</i>	116.9	<i>6.8</i>	127.1	<i>13.0</i>
	Mar	125.2	<i>11.7</i>	118.7	<i>9.2</i>	147.5	<i>21.7</i>	117.8	<i>7.5</i>	127.8	<i>12.7</i>
	Apr	126.0	<i>10.2</i>	119.5	<i>8.8</i>	148.5	<i>21.4</i>	118.6	<i>4.5</i>	128.7	<i>10.5</i>
	May	126.4	<i>8.4</i>	119.7	<i>8.8</i>	148.6	<i>19.9</i>	119.3	<i>1.7</i>	129.2	<i>8.1</i>
	Jun	128.2	<i>7.0</i>	120.9	<i>8.0</i>	148.6	<i>18.0</i>	122.4	<i>0.4</i>	131.2	<i>6.5</i>
	Jul	129.4	<i>6.0</i>	121.5	<i>8.5</i>	149.6	<i>17.6</i>	124.2	<i>-1.7</i>	132.8	<i>4.0</i>
	Aug	130.0	<i>6.1</i>	121.7	<i>7.5</i>	149.5	<i>16.5</i>	125.3	<i>-0.4</i>	133.4	<i>5.4</i>
	Sept	130.3	<i>7.0</i>	122.5	<i>7.9</i>	149.1	<i>14.9</i>	125.7	<i>2.1</i>	133.6	<i>6.7</i>
	Oct	130.4	<i>6.9</i>	122.4	<i>8.4</i>	149.1	<i>13.9</i>	125.8	<i>1.9</i>	133.7	<i>6.1</i>
	Nov	130.8	<i>5.0</i>	122.6	<i>8.3</i>	149.4	<i>3.3</i>	126.5	<i>3.3</i>	134.2	<i>4.1</i>
	Dec	130.9	<i>5.8</i>	123.2	<i>8.5</i>	149.0	<i>1.9</i>	126.6	<i>6.0</i>	134.2	<i>5.1</i>
<b>2010</b>	Jan	131.4	<i>6.1</i>	123.8	<i>5.7</i>	149.3	<i>3.0</i>	127.2	<i>8.5</i>	134.6	<i>6.1</i>
	Feb	131.7	<i>6.1</i>	124.0	<i>5.6</i>	149.5	<i>2.2</i>	127.4	<i>9.0</i>	134.9	<i>6.1</i>
	Mar	132.6	<i>6.0</i>	124.6	<i>4.9</i>	150.5	<i>2.0</i>	128.7	<i>9.3</i>	136.0	<i>6.4</i>
	Apr	135.0	<i>7.1</i>	126.9	<i>6.2</i>	153.7	<i>3.5</i>	130.6	<i>10.1</i>	138.3	<i>7.5</i>
	May	136.3	<i>7.8</i>	128.7	<i>7.5</i>	154.9	<i>4.2</i>	131.7	<i>10.4</i>	139.5	<i>8.0</i>
	Jun	138.1	<i>7.7</i>	129.7	<i>7.3</i>	154.8	<i>4.2</i>	135.1	<i>10.3</i>	141.6	<i>7.9</i>
	July	138.6	<i>7.0</i>	129.9	<i>6.9</i>	155.3	<i>3.8</i>	135.7	<i>9.2</i>	142.2	<i>7.1</i>
	Aug	138.7	<i>6.7</i>	130.0	<i>6.8</i>	155.3	<i>3.8</i>	135.9	<i>8.5</i>	142.4	<i>6.7</i>
	Sept	139.4	<i>7.0</i>	130.9	<i>6.9</i>	155.5	<i>4.3</i>	136.8	<i>8.8</i>	143.1	<i>7.1</i>
	Oct	139.7	<i>7.2</i>	131.0	<i>7.0</i>	155.6	<i>4.3</i>	137.3	<i>9.1</i>	143.4	<i>7.3</i>
	Nov	140.1	<i>7.2</i>	131.2	<i>7.0</i>	155.9	<i>4.3</i>	137.9	<i>9.0</i>	144.0	<i>7.3</i>
	Dec	140.6	<i>7.4</i>	131.6	<i>6.9</i>	156.5	<i>5.0</i>	138.4	<i>9.3</i>	144.5	<i>7.7</i>
<b>2011</b>	Jan	141.8	<i>7.9</i>	132.8	<i>7.3</i>	158.2	<i>5.9</i>	139.2	<i>9.5</i>	145.6	<i>8.2</i>
	Feb	142.9	<i>8.5</i>	132.9	<i>7.2</i>	158.9	<i>6.2</i>	141.3	<i>10.9</i>	147.2	<i>9.1</i>
	Mar	143.8	<i>8.5</i>	133.7	<i>7.3</i>	160.1	<i>6.4</i>	142.2	<i>10.5</i>	148.2	<i>9.0</i>
	Apr	146.0	<i>8.2</i>	135.2	<i>6.5</i>	162.2	<i>5.5</i>	144.8	<i>10.9</i>	150.6	<i>8.9</i>
	May	147.6	<i>8.3</i>	135.3	<i>5.2</i>	163.5	<i>5.5</i>	147.6	<i>12.1</i>	152.9	<i>9.6</i>
	Jun	149.0	<i>7.9</i>	138.0	<i>6.4</i>	164.8	<i>6.5</i>	148.1	<i>9.6</i>	153.6	<i>8.5</i>
	Jul	149.3	<i>7.8</i>	138.0	<i>6.3</i>	165.4	<i>6.5</i>	148.6	<i>9.5</i>	154.2	<i>8.4</i>
	Aug	150.8	<i>8.7</i>	139.0	<i>7.0</i>	165.7	<i>6.7</i>	150.9	<i>11.1</i>	155.8	<i>9.5</i>
	Sept	151.4	<i>8.6</i>	139.9	<i>6.9</i>	166.3	<i>6.9</i>	151.3	<i>10.6</i>	156.3	<i>9.2</i>
	Oct	152.0	<i>8.8</i>	140.3	<i>7.1</i>	167.0	<i>7.4</i>	152.1	<i>10.8</i>	157.0	<i>9.5</i>
	Nov	153.0	<i>9.2</i>	140.4	<i>7.0</i>	167.5	<i>7.4</i>	153.9	<i>11.6</i>	158.4	<i>10.0</i>
	Dec	153.5	<i>9.2</i>	140.7	<i>6.9</i>	168.0	<i>7.4</i>	154.6	<i>11.8</i>	159.1	<i>10.1</i>
<b>2012</b>	Jan	154.3	<i>8.8</i>	141.1	<i>6.2</i>	169.6	<i>7.2</i>	155.3	<i>11.5</i>	160.0	<i>9.9</i>
	Feb	154.7	<i>8.2</i>	141.0	<i>6.1</i>	170.4	<i>7.3</i>	155.7	<i>10.2</i>	160.6	<i>9.1</i>
	Mar	155.4	<i>8.0</i>	141.4	<i>5.8</i>	172.2	<i>7.6</i>	156.1	<i>9.8</i>	161.4	<i>8.9</i>
	Apr	156.9	<i>7.5</i>	142.4	<i>5.3</i>	176.0	<i>8.5</i>	156.7	<i>8.2</i>	163.2	<i>8.3</i>
	May	159.0	<i>7.7</i>	144.2	<i>6.5</i>	178.0	<i>8.9</i>	158.9	<i>7.7</i>	165.3	<i>8.1</i>
<b>% Change on last month</b>		<i>1.3</i>		<i>1.2</i>		<i>1.1</i>		<i>1.4</i>		<i>1.3</i>	



**TABLE 4: Core Inflation Rates by Exclusion and Trimmed Mean**

<b>Year</b>	<b>Month</b>	<b>Consumer Price Index (Trimmed Mean) (September 2006 = 100)</b>	<b>Core Monthly Inflation Rate (Trimmed Mean) (percentage)</b>	<b>Consumer Price Index (Excluding Administered Prices) (September 2006 = 100)</b>	<b>Core Monthly Inflation (Excluding Administered Prices) (percentage)</b>
2009					
	Jan	122.4	<b>11.2</b>	127.7	<b>16.4</b>
	Feb	122.6	<b>10.3</b>	128.1	<b>15.8</b>
	Mar	123.7	<b>10.6</b>	129.4	<b>15.8</b>
	Apr	124.6	<b>9.9</b>	130.3	<b>15.5</b>
	May	125.0	<b>8.7</b>	130.8	<b>14.5</b>
	Jun	126.4	<b>7.5</b>	131.9	<b>13.8</b>
	Jul	127.7	<b>7.4</b>	133.4	<b>14.2</b>
	Aug	128.1	<b>6.9</b>	133.5	<b>13.4</b>
	Sept	128.5	<b>6.8</b>	134.0	<b>12.6</b>
	Oct	127.1	<b>5.8</b>	134.0	<b>11.1</b>
	Nov	129.5	<b>5.3</b>	134.5	<b>7.7</b>
	Dec	127.7	<b>6.4</b>	134.7	<b>7.0</b>
2010					
	Jan	129.7	<b>6.7</b>	135.2	<b>5.9</b>
	Feb	129.0	<b>6.7</b>	135.5	<b>5.8</b>
	Mar	130.0	<b>6.5</b>	136.7	<b>5.6</b>
	Apr	133.1	<b>7.7</b>	139.1	<b>6.8</b>
	May	133.2	<b>8.3</b>	140.2	<b>7.2</b>
	Jun	135.0	<b>8.1</b>	141.0	<b>6.9</b>
	July	136.6	<b>7.6</b>	141.5	<b>6.1</b>
	Aug	135.4	<b>7.2</b>	142.0	<b>6.3</b>
	Sept	136.8	<b>7.4</b>	142.7	<b>6.5</b>
	Oct	137.2	<b>7.6</b>	143.1	<b>6.8</b>
	Nov	137.9	<b>7.6</b>	143.6	<b>6.7</b>
	Dec	137.5	<b>7.7</b>	144.2	<b>7.1</b>
2011					
	Jan	139.6	<b>8.0</b>	145.5	<b>7.6</b>
	Feb	142.1	<b>8.6</b>	146.0	<b>7.7</b>
	Mar	142.6	<b>8.4</b>	147.1	<b>7.6</b>
	Apr	143.4	<b>8.0</b>	149.4	<b>7.4</b>
	May	148.7	<b>8.2</b>	150.5	<b>7.3</b>
	Jun	148.8	<b>7.6</b>	151.4	<b>7.4</b>
	July	150.3	<b>7.4</b>	151.9	<b>7.3</b>
	Aug	153.7	<b>8.4</b>	152.5	<b>7.4</b>
	Sept	154.8	<b>8.1</b>	153.2	<b>7.4</b>
	Oct	155.6	<b>8.3</b>	154.0	<b>7.6</b>
	Nov	156.3	<b>8.5</b>	154.4	<b>7.5</b>
	Dec	156.9	<b>8.5</b>	155.1	<b>7.5</b>
2012					
	Jan	157.9	<b>8.1</b>	156.0	<b>7.2</b>
	Feb	158.0	<b>7.8</b>	156.5	<b>7.2</b>
	Mar	159.2	<b>7.6</b>	157.4	<b>7.0</b>
	Apr	158.9	<b>7.3</b>	159.2	<b>6.6</b>
	May	160.7	<b>7.3</b>	160.2	<b>6.5</b>

Prices Collection Coverage for Botswana Consumer Price Index (CPI) - 2012

