



STATS BRIEF

RELEASED BY CENTRAL STATISTICS OFFICE

Private Bag 0024

Gaborone, Botswana

Tel: (+267) 3671300 Fax: (+267) 3952201

Website: www.cso.gov.bw

Contact Statistician: Virginia Sebekedi



All correspondence should be addressed to the Government Statistician

No. 2009/12

July 2009

MARRIAGE STATISTICS 2003-2006

1.0 INTRODUCTION

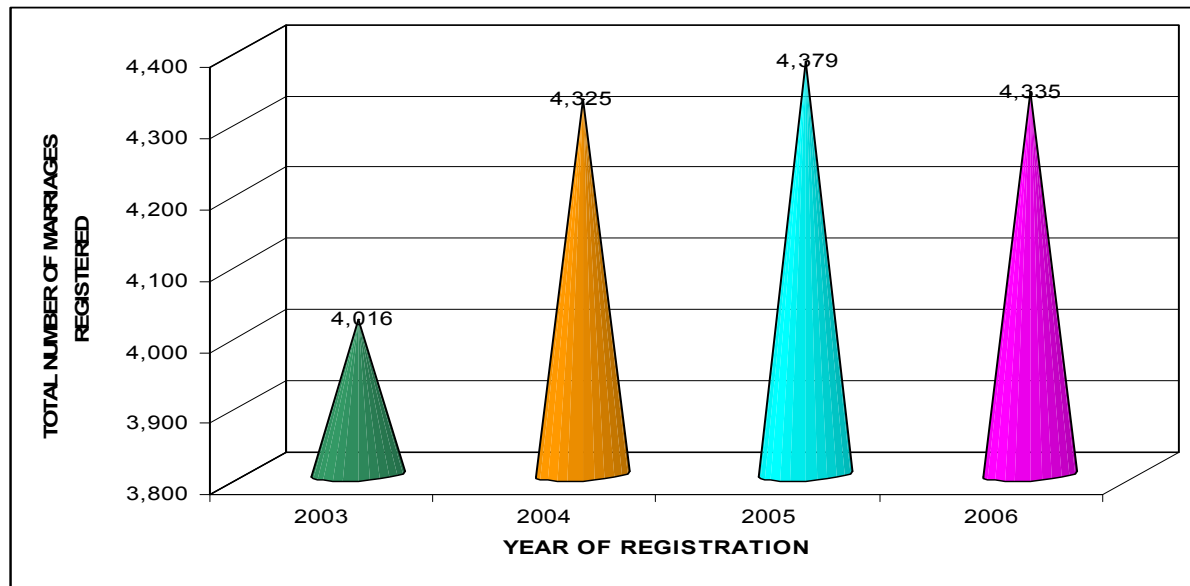
This Stats Brief is a summary of marriage statistics from 2003 to 2006. It is a section of the Population Report. The Population Report is a series of annual publications produced by the Central Statistics Office relating to births, deaths and marriages. The last Population Report was produced in 1999.

The Unit has not been able to produce any Population Report after 1999 due to slow computerisation exercise of the aforementioned data by Ministry of Labour and Home Affairs. With the new system now running, data for births and deaths is obtained from Department of Civil and National Registration in an electronic version. Data for marriages is extracted manually from the marriage certificates and processed by the Demography Unit. Due to the change in the way the information was captured, only statistics on marriages have been produced in the form of stats brief. The data for births and deaths could not be used because it is incomplete and underestimates the births and deaths occurring in Botswana.

2.0 Trends in Marriages (2003-2006)

The number of marriages registered between 2003 and 2006 fluctuated between 4,000 and 4,400. The number showed a slight increase from 2003-2005. A slight decrease of about one percent is noticed, from 2005 to 2006.

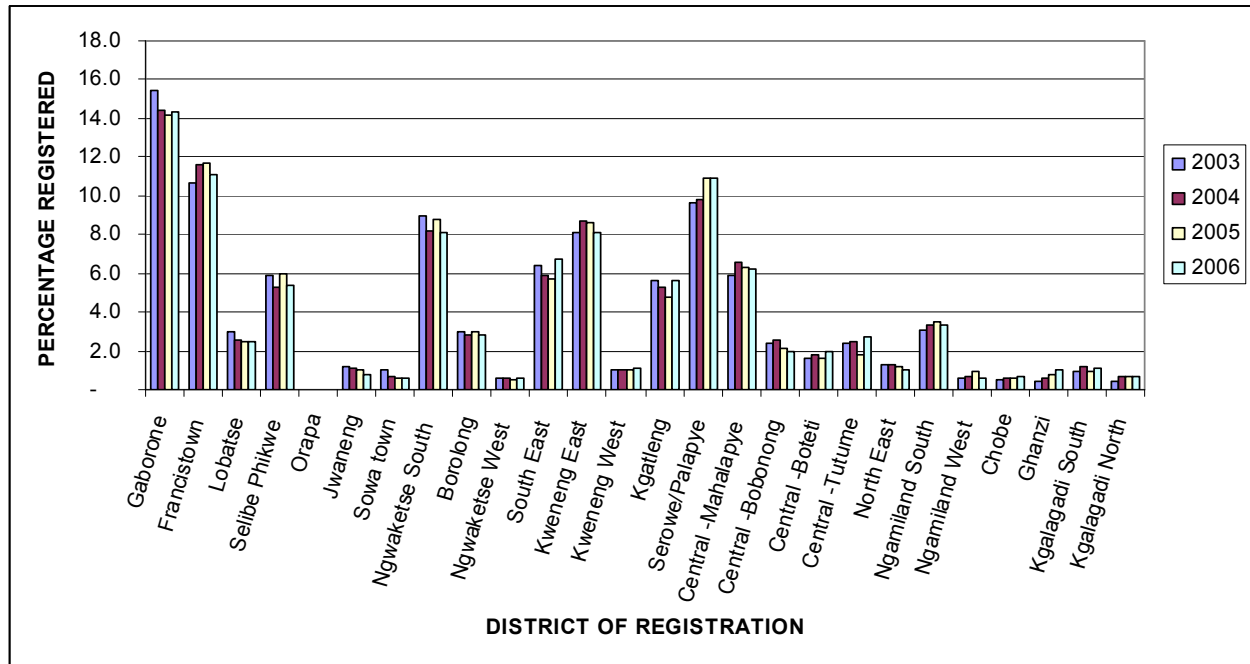
Chart 1: TOTAL NUMBER OF MARRIAGES REGISTERED



2.1 District of Registration

Chart 2 shows that a higher proportion of marriages were registered in Gaborone followed by Francistown, Serowe/Palapye, Ngwaketse South and Kweneng East. Gaborone accounts for about 15 percent of total registered marriages throughout the years.

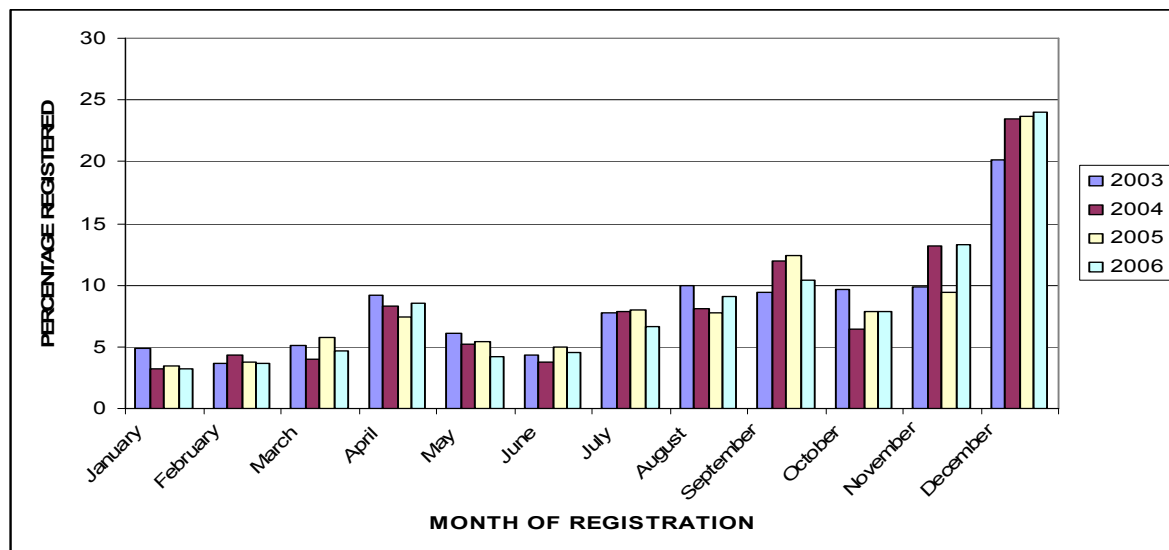
Chart 2: MARRIAGE BY DISTRICT OF REGISTRATION



2.2 Month of Registration

Chart 3 below shows percentage of marriages registered through 2003-2006 by month of registration. It is evident that there is a similar trend of the number of registered marriages throughout these years. The number of registered marriages tends to increase around the month of August. The highest percentage of registered marriages is in the month of December for all the years and lowest in the month of January.

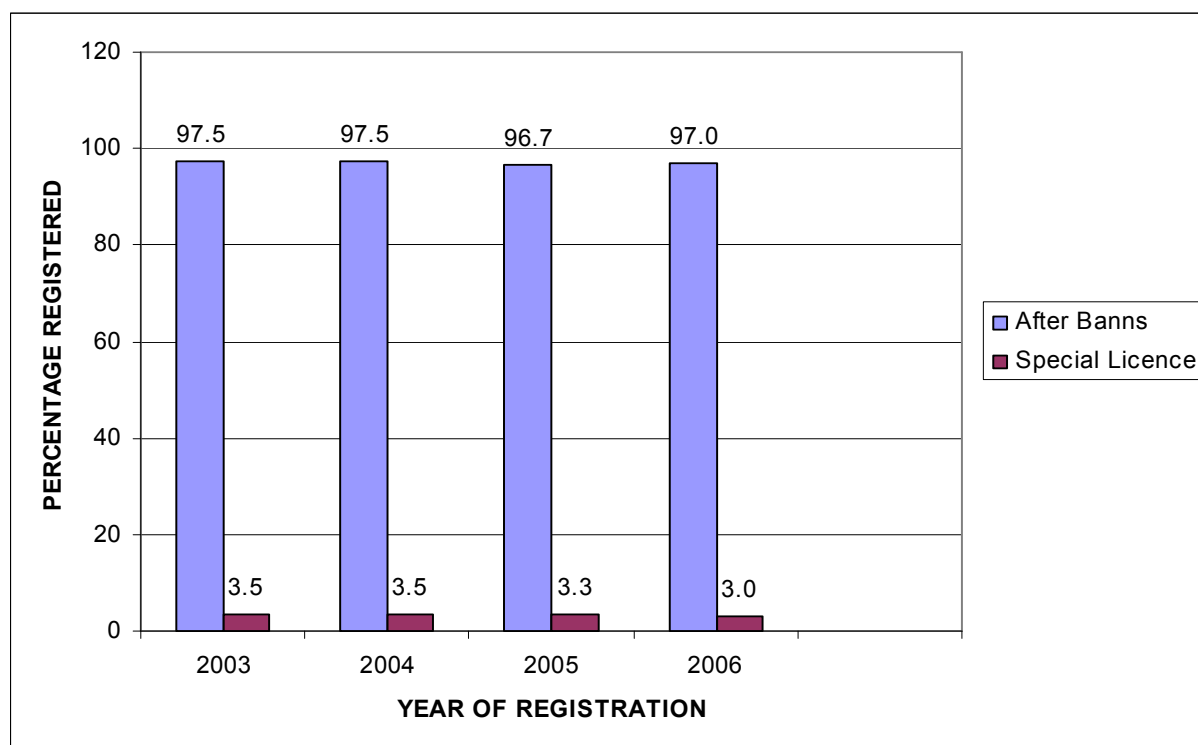
Chart 3: REGISTERED MARRIAGES BY MONTH OF REGISTRATION



2.4 Type of Marriage

There are two types of marriages, the Court Banns marriage (the usual practice of proclaiming the names of the candidates for the period of 21 days before formalising the marriage) and the Special License that expedites the marriage process. The most popular type of marriage was the court banns which constituted about 96 percent of all the registered marriages for all the years. Special License marriage constituted the remaining 4 percent.

Chart 4: REGISTERED MARRIAGES BY TYPE OF MARRIAGE



2.5 Age At The Time Of Marriage

Table 2.51 below shows that the mean age at first marriage for bachelors is around 37 years for the years 2003 to 2006, while the comparable figure for spinsters was around 5 years less than those of males, at around 32 years.

Table 2.51: AGE AT FIRST MARRIAGE

Year	Bachelor	Spinster
2003	37.2	31.6
2004	37.3	31.8
2005	37.3	31.7
2006	36.9	31.4

It is evident that there are marriages of minors as shown by Table 2.52 below, but this only happens for females, who marry between the ages of 17-20, accounting for 1.8 percent in 2003 and gradually declining over the years to 1.1 percent in 2006. Men tend to marry at later ages with a few of them marrying at age 21. Generally women do not marry men in the same age group as theirs, but those who are in the next age group. Refer to Tables 1.2, 2.2, 3.2, and 4.2.

TABLE 2.52 AGE AT THE TIME OF MARRIAGE

Age	2003		2004		2005		2006	
	M	F	M	F	M	F	M	F
16	-	-	-	0.0	-	-	-	-
17	-	0.0	-	0.0	-	0.0	-	-
18	-	0.3	-	0.0	-	0.1	-	0.1
19	-	0.5	-	0.3	-	0.3	-	0.2
17-19	-	0.8	-	0.3	-	0.4	-	0.3
20	-	1.0	0.0	0.9	-	0.8	-	0.9
21	0.0	1.3	0.0	1.5	0.1	1.6	0.0	1.1
22	0.2	2.3	0.2	2.4	0.1	2.4	0.2	2.1
23	0.3	4.1	0.3	3.6	0.3	2.9	0.4	3.5
24	0.6	5.2	0.6	4.9	0.5	4.6	0.5	4.8
20-24	1.1	13.9	1.2	13.3	0.9	12.4	1.2	12.3
25	1.3	5.8	0.9	6.0	1.1	6.3	1.1	6.5
26	2.0	6.8	1.9	5.9	1.7	6.4	1.9	7.1
27	2.7	7.2	2.8	7.5	2.5	7.4	2.7	7.0
28	3.9	7.7	4.0	7.5	3.7	7.7	3.6	7.4
29	5.3	7.5	5.2	7.6	5.5	7.2	5.4	8.1
25-29	15.3	35.1	14.7	34.5	14.5	35.1	14.7	36.1
30-34	28.9	23.9	28.5	24.8	28.6	25.8	30.0	26.7
35-39	20.8	13.1	22.8	13.2	23.1	12.9	22.3	12.3
40-44	14.3	6.0	14.0	6.5	13.2	6.3	13.4	6.2
45-49	8.9	3.6	8.0	4.1	9.1	4.4	8.5	3.3
50-54	4.4	1.8	4.9	1.7	4.6	1.5	4.9	1.4
55-59	2.9	0.9	2.7	0.6	2.6	0.7	2.4	0.7
60-64	1.8	0.3	1.5	0.5	1.3	0.4	1.2	0.2
65+	1.7	0.4	1.7	0.3	1.8	0.3	1.4	0.4

2.6 Registered Marriages and Occupation

Table 2.61 below shows that the proportions of the males and females marrying differ across different occupations. For the years 2003 and 2004 the highest proportion (around 16 percent) of males marrying falls within the category of craft and related trade workers while the lowest proportion (around 2 percent) falls within the category of clerks. It is evident that the highest proportion (more than 15 percent) of registered marriages is in the category of professionals for males for the years 2005 and 2006 and lowest proportion (around 2 percent) falls within the category clerks. Marriage for females is at peak (around 40 percent) for those who are not employed and lowest (less than one percent) for those who fall within the category of plant and machine operators and assemblers throughout the years.

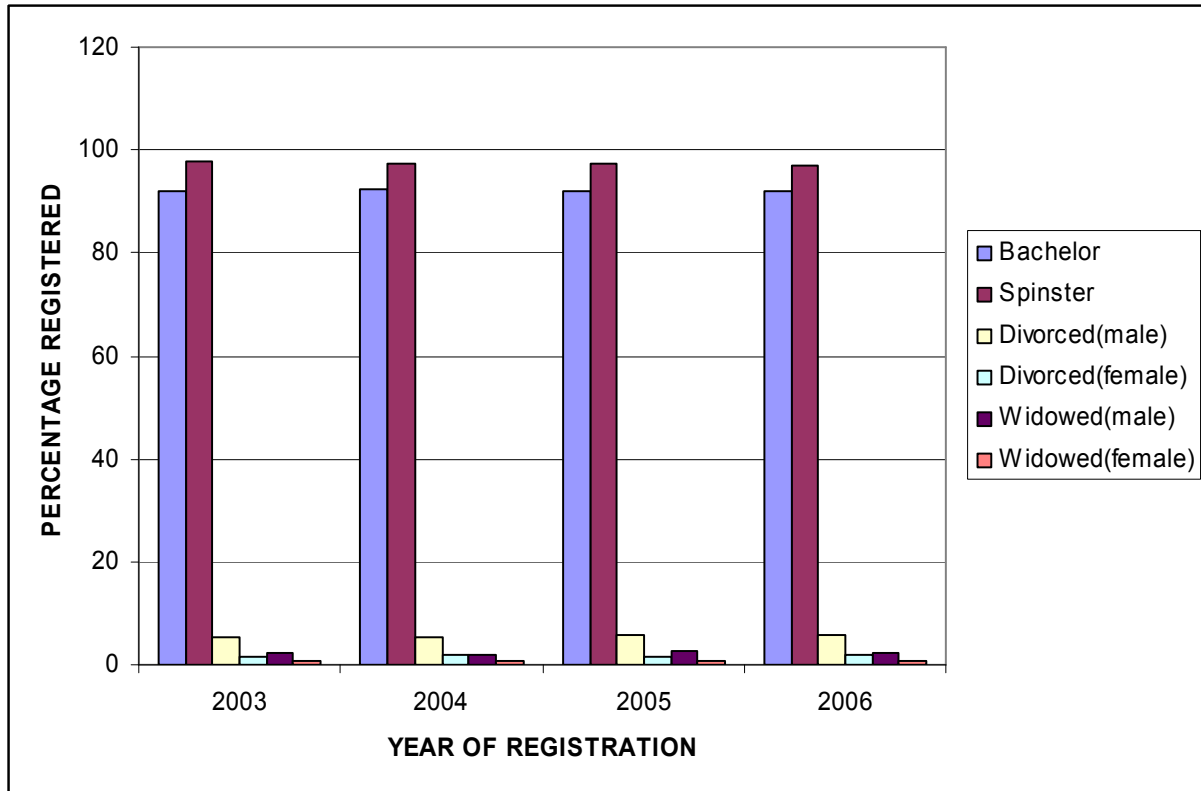
Table 2.61: PERCENT REGISTERED MARRIAGES BY OCCUPATION

OCCUPATION	YEAR OF REGISTRATION							
	2003		2004		2005		2006	
	M	F	M	F	M	F	M	F
Legislators,administration and managers	10.4	6.8	11.0	6.9	11.0	6.8	12.4	7.7
Professionals	13.0	12.6	13.5	13.1	15.3	14.2	18.6	14.6
Technicians and associate professionals	14.6	11.0	12.4	9.3	13.6	9.4	10.7	10.9
Clerks	1.9	9.6	2.5	10.4	2.7	10.2	2.3	8.3
Service workers and shop and market sales workers	9.1	8.4	10.5	9.1	8.6	9.3	9.0	9.6
Skilled agricultural and related workers	4.4	1.0	3.8	1.3	3.7	1.1	3.0	0.9
Craft and related trade workers	15.9	3.1	16.0	3.0	13.6	2.2	13.4	2.5
Plant and machine operators and assemblers	13.0	0.6	12.3	0.9	12.8	0.6	12.9	0.6
Elementary occupations	6.2	5.6	6.4	5.7	6.3	6.3	4.8	4.8
Botswana Defence Force	6.1	0.0	5.5	0.0	5.8	0.0	6.5	0.0
Not classifiable	0.0	0.1	0.1	0.1	0.1	0.1	0.4	0.3
Unemployed	5.4	41.2	5.9	40.3	6.4	39.8	6.0	39.8
Not stated	0.0	0.0	0.0	0.0	0.0	0.0	0.0	0.0
Total	100.0	100.0	100.0	100.0	100.0	100.0	100.0	100.0

2.7 Previous Marital Status

The chart below depicts that for all the years (2003-2006) the marriages in which a man was a bachelor accounted for about 92 percent and for those in which he had previously been divorced formed about 5.5 percent of the total marriages. Widowers take the lowest proportions of marriages for both men and women. Marriages in which the woman was a spinster accounted for about 97 percent of the marriages and those who had previously divorced formed about 2 percent of the total marriages.

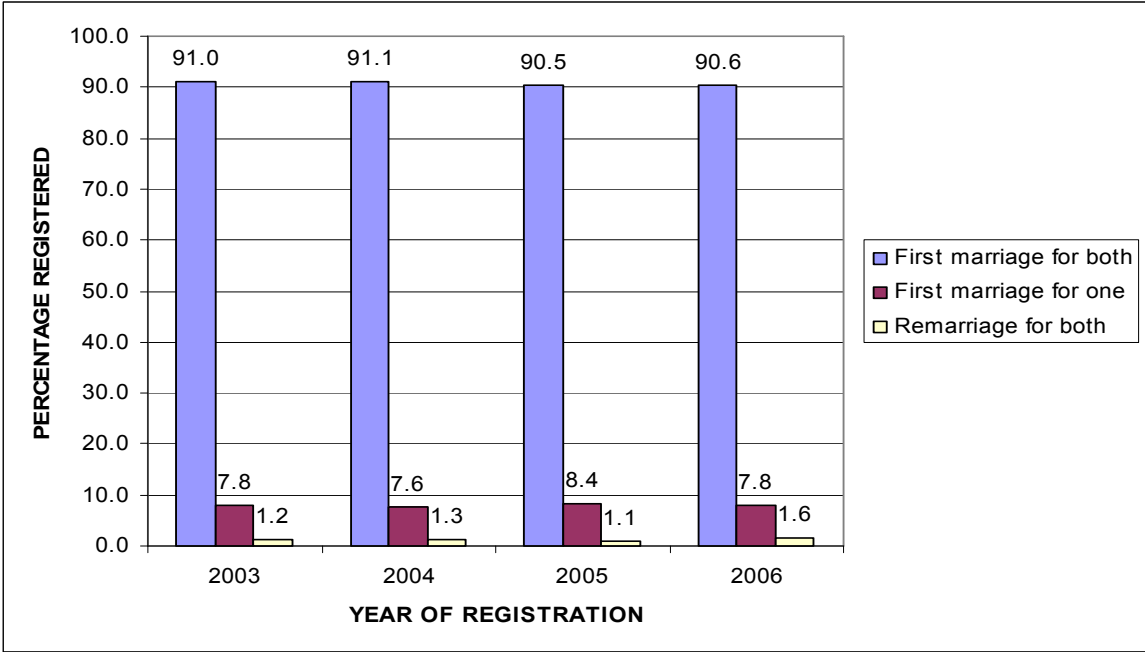
Chart 5: MARRIAGES BY PREVIOUS MARITAL STATUS



2.8 Trends in First Marriages and Remarriages

The chart above clearly shows that, marriages between spinsters and bachelors account for more than 90 percent of all the marriages through the years 2003-2006. Around 8 percent of the marriages are accounted for by first marriages for one party and 1 percent of the marriages are for remarriage for both parties.

Chart 6: TRENDS IN MARRIAGES AND RE-MARRIAGES



A.N. Majelantle
Government Statistician

TABLE 1.0 A SUMMARY OF MARRIAGES 2003-2006

Year of marriage	2003	2004	2005	2006
Total marriages	4016	4325	4379	4335
Quarterly Totals				
Jan-March	548	500	568	496
Apr-June	787	752	776	745
July-Sept	1,092	1,209	1,238	1,135
Oct-Dec	1,589	1,864	1,797	1,959
Total	4,016	4,325	4,379	4,335
Previous marital status				
Males				
Bachelor	3,702	3,997	4,024	3,984
Divorced	217	239	244	249
Widowed	97	89	111	102
Total	4,016	4,325	4,379	4,335
Females				
Spinster	3,919	4,213	4,272	4,208
Divorced	69	82	74	90
Widowed	28	30	33	37
Total	4,016	4,325	4,379	4,335
First marriage for both	3,653	3,941	3,963	3,926
First marriage for one	315	328	370	340
Remarriage for both	48	56	46	69
Total	4,016	4,325	4,379	4,335
Type of marriage				
After Banns	3,874	4,173	4,234	4,205
Special License	140	152	145	130
Not stated	2	-	-	-
Total	4,016	4,325	4,379	4,335

TABLE 1.1 AGE AT MARRIAGE BY MARITAL STATUS AND SEX-2003

Age	MALES					FEMALES				
	Bachelor	Divorced	Widowed	Total	Percent	Spinster	Divorced	Widowed	Total	Percent
17	-	-	-	-	-	1	-	-	1	0.0
18	-	-	-	-	-	11	-	-	11	0.3
19	-	-	-	-	-	20	-	-	20	0.5
17-19	-	-	-	-	-	32	-	-	32	0.8
20	-	-	-	-	-	42	-	-	42	1.0
21	1	-	-	1	0.0	52	-	-	52	1.3
22	7	-	-	7	0.2	93	1	-	94	2.3
23	12	-	-	12	0.3	163	-	-	163	4.1
24	24	-	-	24	0.6	208	1	-	209	5.2
20-24	44	-	-	44	1.1	558	2	-	560	13.9
25	54	-	-	54	1.3	234	-	-	234	5.8
26	80	1	-	81	2.0	272	-	1	273	6.8
27	109	-	-	109	2.7	287	1	2	290	7.2
28	158	-	-	158	3.9	310	-	-	310	7.7
29	210	1	-	211	5.3	301	1	-	302	7.5
25-29	611	2	-	613	15.3	1,404	2	3	1,409	35.1
30-34	1,152	6	1	1,159	28.9	945	11	5	961	23.9
35-39	793	27	15	835	20.8	500	23	5	528	13.1
40-44	517	44	15	576	14.3	224	12	4	240	6.0
45-49	275	61	21	357	8.9	128	12	6	146	3.6
50-54	136	29	13	178	4.4	67	4	2	73	1.8
55-59	78	25	12	115	2.9	33	3	2	38	0.9
60-64	48	19	4	71	1.8	12	-	-	12	0.3
65+	48	4	16	68	1.7	16	-	1	17	0.4
Total	3,702	217	97	4,016	100.0	3,919	69	28	4,016	100.0
Percent	92.2	5.4	2.4	100.0		97.6	1.7	0.7	100.0	

TABLE 1.2 AGE IN COMBINATION AT MARRIAGE 2003

Age of Wife	Age of Husband										Total
	20-24	25-29	30-34	35-39	40-44	45-49	50-54	55-59	60-64	65+	
15-19	7	8	7	8	2	-	-	-	-	-	32
20-24	25	213	208	75	27	7	3	1	1	-	560
25-29	8	326	618	278	123	27	19	9	1	-	1,409
30-34	4	51	292	326	174	78	24	9	2	1	961
35-39	-	11	34	131	183	104	38	18	7	2	528
40-44	-	2	-	14	54	100	31	25	12	2	240
45-49	-	2	-	3	10	35	48	21	15	12	146
50-54	-	-	-	-	3	4	12	25	17	12	73
55-59	-	-	-	-	-	2	3	6	13	14	38
60-64	-	-	-	-	-	-	-	1	2	9	12
65+	-	-	-	-	-	-	-	-	1	16	17
Total	44	613	1,159	835	576	357	178	115	71	68	4,016

TABLE 1.3: MARRIAGES REGISTERED IN 2003 BY PLACE OF RESIDENCE OF HUSBAND AND WIFE AT MARRIAGE TIME AND AGE GROUP

DISTRICT	AGE GROUP																						Total	
	15-19		20-24		25-29		30-34		35-39		40-44		45-49		50-54		55-59		60-64		65+			
	M	F	M	F	M	F	M	F	M	F	M	F	M	F	M	F	M	F	M	F	M	F		
Gaborone	-	6	16	117	152	304	281	213	192	105	100	40	59	23	32	5	19	2	5	-	1	1	857	816
Francistown	-	1	5	51	59	104	105	60	60	37	44	17	27	11	17	4	10	1	6	-	2	-	335	286
Lobatse	-	-	-	11	11	32	33	31	28	11	11	7	7	1	4	1	2	-	1	-	-	-	97	94
Selibe Phikwe	-	1	-	27	22	67	73	54	45	29	30	17	33	4	11	3	11	1	3	-	-	-	228	203
Orapa	-	-	1	3	11	13	23	8	8	5	10	1	7	-	3	1	-	-	1	-	-	-	64	31
Jwaneng	-	2	-	4	15	18	21	14	20	6	21	3	5	3	1	-	1	-	-	-	-	-	84	50
Sowa town	-	-	-	2	2	3	9	2	4	4	4	1	2	1	-	-	1	-	1	-	-	-	23	13
Southern	-	2	1	53	34	120	57	80	72	76	54	44	51	25	27	23	15	15	20	7	28	8	359	453
Ngwaketse South	-	1	1	39	24	91	40	64	57	63	38	33	46	21	22	21	13	12	15	6	21	4	277	355
Borolong	-	1	-	12	8	21	12	13	12	10	12	7	5	3	5	-	-	3	5	1	6	4	65	75
Ngwaketse West	-	-	-	2	2	8	5	3	3	3	4	4	-	1	-	2	2	-	-	-	1	-	17	23
South East	-	3	1	31	24	78	51	50	45	22	28	11	18	5	6	2	1	3	4	1	3	-	181	206
Kweneng	-	3	6		78		165		97		70		43		23		12		8		11		513	
Kweneng East	-	3	4	57	61	159	127	96	81	53	62	29	37	13	21	11	10	7	7	2	10	1	420	431
Kweneng West	-	-	2	11	17	21	38	6	16	8	8	3	6	1	2	3	2	-	1	-	1	1	93	54
Kgatlang	-	-	4	29	22	56	28	34	35	14	17	13	12	9	10	5	3	2	2	-	4	1	137	163
Central	-	9	4	102	97	280	203	207	142	109	116	33	58	41	30	11	29	6	18	2	14	4	711	804
Central -Serowe/Palapye	-	5	2	30	30	82	82	81	41	43	46	14	22	16	10	5	9	2	6	1	5	2	253	281
Central -Mahalapye	-	1	-	20	20	51	34	45	28	25	23	5	15	14	9	1	9	2	5	1	5	1	148	166
Central -Bobonong	-	2	-	13	12	45	22	22	20	10	11	2	8	4	2	2	3	-	3	-	1	1	82	101
Central -Boteti	-	-	-	9	10	27	17	19	17	11	10	3	5	1	2	-	1	-	1	-	-	-	63	70
Central -Tutume	-	1	2	30	25	75	48	40	36	20	26	9	8	6	7	3	7	2	3	-	3	-	165	186
North East	-	1	2	8	12	18	14	22	4	5	11	4	5	2	2	1	2	-	1	-	-	-	53	61
North West	-	2	1	26	39	77	59	56	41	20	26	8	9	2	7	1	7	1	1	-	2	-	192	193
Ngamiland South	-	1	1	16	20	52	39	36	26	11	19	5	6	1	4	-	4	1	-	-	1	-	120	123
Ngamiland West	-	-	-	8	8	10	12	10	6	5	3	1	1	-	1	1	1	-	-	-	-	-	32	35
Chobe	-	1	-	2	11	15	8	10	9	4	4	2	2	1	2	-	2	-	1	-	1	-	40	35
Ghanzi	-	-	-	1	4	12	10	6	12	8	5	2	6	1	1	1	2	-	-	-	-	-	40	31
Kgalagadi South	-	-	-	8	7	12	7	6	9	6	13	2	3	3	2	-	-	-	-	-	1	1	42	38
Kgalagadi North	-	-	-	2	3	11	6	2	7	4	2	3	4	-	-	-	-	-	-	-	1	-	23	22
Other countries	-	2	3	17	21	24	14	14	14	6	14	2	8	1	2	1	-	-	-	-	1	-	77	67
Total	-	32	44	560	613	1,409	1,159	961	835	528	576	240	357	146	178	73	115	38	71	12	68	17	4,016	4,016
Percent	-	<i>0.8</i>	<i>1.1</i>	<i>13.9</i>	<i>15.3</i>	<i>35.1</i>	<i>28.9</i>	<i>23.9</i>	<i>20.8</i>	<i>13.1</i>	<i>14.3</i>	<i>6.0</i>	<i>8.9</i>	<i>3.6</i>	<i>4.4</i>	<i>1.8</i>	<i>2.9</i>	<i>0.9</i>	<i>1.8</i>	<i>0.3</i>	<i>1.7</i>	<i>0.4</i>	<i>100.0</i>	<i>100.0</i>

TABLE 2.1 AGE AT MARRIAGE BY PREVIOUS MARITAL STATUS AND SEX-2004

Age	MALES					FEMALES				
	Bachelor	Divorced	Widowed	Total	Percent	Spinster	Divorced	Widowed	Total	Percent
16	-	-	-	-	-	1	-	-	1	0.0
17	-	-	-	-	-	1	-	-	1	0.0
18	-	-	-	-	-	2	-	-	2	0.0
19	-	-	-	-	-	11	-	-	11	0.3
16-19	-	-	-	-	-	15	-	-	15	0.3
20	1	-	-	1	0.0	41	-	-	41	0.9
21	1	-	-	1	0.0	64	-	-	64	1.5
22	8	-	-	8	0.2	102	-	-	102	2.4
23	15	-	-	15	0.3	157	-	-	157	3.6
24	25	-	-	25	0.6	212	-	-	212	4.9
20-24	50	-	-	50	1.2	576	-	-	576	13.3
25	37	-	-	37	0.9	258	1	-	259	6.0
26	80	1	-	81	1.9	254	2	-	256	5.9
27	118	2	-	120	2.8	320	1	3	324	7.5
28	174	-	-	174	4.0	325	1	-	326	7.5
29	223	1	-	224	5.2	323	2	2	327	7.6
25-29	632	4	-	636	14.7	1,480	7	5	1,492	34.5
30-34	1,210	16	6	1,232	28.5	1,052	19	2	1,073	24.8
35-39	952	29	6	987	22.8	545	23	5	573	13.2
40-44	541	42	21	604	14.0	258	17	8	283	6.5
45-49	280	51	15	346	8.0	161	10	6	177	4.1
50-54	153	44	14	211	4.9	70	5	-	75	1.7
55-59	91	20	7	118	2.7	23	1	3	27	0.6
60-64	44	15	7	66	1.5	21	-	1	22	0.5
65+	44	18	13	75	1.7	12	-	-	12	0.3
Total	3,997	239	89	4,325	100.0	4,213	82	30	4,325	100.0
Percent	92.4	5.5	2.1	100.0		97.4	1.9	0.7	100.0	

TABLE 2.2 AGE IN COMBINATION AT MARRIAGE-2004

Age of Wife	Age of Husband										Total	
	20-24	25-29	30-34	35-39	40-44	45-49	50-54	55-59	60-64	65+		
15-19	3	6	5	-	1	-	-	-	-	-	-	15
20-24	34	230	209	78	17	4	2	1	1	-	-	576
25-29	7	350	641	318	120	42	10	2	1	1	-	1,492
30-34	5	42	325	403	196	64	26	5	7	-	-	1,073
35-39	-	7	44	165	182	107	38	18	4	8	-	573
40-44	1	1	7	17	73	83	55	26	10	10	-	283
45-49	-	-	-	6	14	43	56	36	15	7	-	177
50-54	-	-	1	-	1	3	23	24	12	11	-	75
55-59	-	-	-	-	-	-	-	5	12	10	-	27
60-64	-	-	-	-	-	-	1	-	3	18	-	22
65+	-	-	-	-	-	-	-	1	1	10	-	12
Total	50	636	1,232	987	604	346	211	118	66	75	-	4,325

TABLE 2.3: MARRIAGES REGISTERED IN 2004 BY PLACE OF RESIDENCE OF HUSBAND AND WIFE AT MARRIAGE TIME AND AGE GROUP

DISTRICT	AGE GROUP																								Total
	15-19		20-24		25-29		30-34		35-39		40-44		45-49		50-54		55-59		60-64		65+		M	F	
	M	F	M	F	M	F	M	F	M	F	M	F	M	F	M	F	M	F	M	F	M	F			
Gaborone	-	5	12	119	168	335	289	241	237	101	123	58	61	20	29	10	14	2	8	1	3	-	944	892	
Francistown	-	1	10	49	58	110	106	81	93	33	44	18	28	14	10	2	3	1	2	-	7	-	361	309	
Lobatse	-	-	-	7	15	31	29	24	32	20	10	6	10	4	5	2	5	1	1	-	1	1	108	96	
Selibe Phikwe	-	1	-	32	32	67	69	53	50	19	28	15	29	10	21	-	3	-	-	-	-	-	232	197	
Orapa	-	-	-	5	17	16	23	8	13	2	11	3	5	-	2	1	1	-	-	-	-	-	72	35	
Jwaneng	-	-	1	10	13	22	20	17	21	4	13	6	5	4	6	1	2	-	2	-	-	-	83	64	
Sowa town	-	-	-	-	3	3	8	4	7	1	1	-	-	-	1	-	-	-	-	-	-	-	20	8	
Southern	-	-	2	40	27	116	67	75	62	75	51	31	35	34	31	22	22	7	12	9	23	4	332	413	
Ngwaketse South	-	-	-	28	24	88	50	53	49	57	41	24	23	25	21	17	21	5	10	8	16	3	255	308	
Borolong	-	-	2	11	3	23	16	19	12	12	10	6	9	7	9	5	1	2	1	1	6	1	69	87	
Ngwaketse West	-	-	-	1	-	5	1	3	1	6	-	1	3	2	1	-	-	-	1	-	1	-	8	18	
South East	-	1	3	16	16	55	39	55	42	30	24	11	14	9	7	4	5	2	3	-	1	1	154	184	
Kweneng East	-	2	5	65	54	172	121	128	114	65	75	31	43	22	31	10	10	3	9	6	10	-	472	504	
Kweneng West	-	-	-	10	19	24	29	14	21	9	9	2	5	7	4	3	5	2	4	-	-	-	96	71	
Kgatleng	-	-	2	24	15	64	42	47	34	30	22	13	9	5	6	1	3	3	1	1	4	-	138	188	
Central	-	4	5	113	94	281	203	207	144	119	129	59	63	35	39	13	32	4	14	3	21	4	744	842	
Serowe/Palapye	-	3	2	40	34	84	62	79	43	41	48	26	21	11	14	4	10	2	4	1	15	3	253	294	
Mahalapye	-	-	2	26	18	58	44	52	38	26	32	14	15	8	5	3	8	1	3	1	2	1	167	190	
Bobonong	-	-	-	14	3	46	29	30	20	21	20	5	9	5	6	4	4	1	2	-	2	-	95	126	
Boteti	-	-	1	9	8	30	20	12	11	8	14	5	11	1	3	-	3	-	-	-	1	-	72	65	
Tutume	-	1	-	24	31	63	48	34	32	23	15	9	7	10	11	2	7	-	5	1	1	-	157	167	
North East	-	-	2	11	9	31	29	16	15	8	8	6	7	2	2	1	2	1	2	1	1	-	77	77	
North West	-	-	3	34	47	96	71	46	35	32	28	14	17	3	6	1	4	-	3	1	2	-	216	227	
Ngamiland South	-	-	1	23	21	58	40	28	22	20	19	9	10	-	3	1	2	-	1	1	2	-	121	140	
Ngamiland West	-	-	-	7	13	18	14	7	4	4	6	3	3	1	1	-	1	-	2	-	-	-	44	40	
Chobe	-	-	2	4	13	20	16	11	9	8	3	2	4	2	1	-	1	-	-	-	-	-	49	47	
Ngamiland Delta	-	-	-	-	-	1	-	-	-	-	-	-	-	-	1	-	-	-	-	-	-	-	2	-	
Ghanzi	-	-	-	5	7	14	15	14	17	4	9	2	5	-	2	-	1	-	-	-	-	-	56	39	
Kgalagadi South	-	1	2	11	7	20	23	13	12	4	3	-	-	2	3	2	3	-	1	-	2	2	56	55	
Kgalagadi North	-	-	-	3	3	5	10	11	14	4	1	4	4	1	2	-	1	-	-	-	-	-	35	28	
Other countries	-	-	3	20	32	30	38	19	24	13	15	4	6	5	4	2	2	1	4	-	-	-	128	94	
Not stated	-	-	-	2	-	-	1	-	-	-	-	-	-	-	-	-	-	-	-	-	-	-	1	2	
Total	-	15	50	576	636	1,492	1,232	1,073	987	573	604	283	346	177	211	75	118	27	66	22	75	12	4,325	4,325	
Percent	-	0.3	1.2	13.3	14.7	34.5	28.5	24.8	22.8	13.2	1.4	6.5	8.0	4.1	4.9	1.7	2.7	0.6	1.5	0.5	1.7	0.3	100.0	100.0	

TABLE 3.1 AGE AT MARRIAGE BY PREVIOUS MARITAL STATUS AND SEX-2005

Age	MALES					FEMALES					
	Bachelor	Divorced	Widowed	Total	Percent	Spinster	Divorced	Widowed	Not stated	Total	Percent
17	-	-	-	-	-	2	-	-	-	2	0.0
18	-	-	-	-	-	3	-	-	-	3	0.1
19	-	-	-	-	-	12	-	-	-	12	0.3
17-19	-	-	-	-	-	17	-	-	-	17	0.4
20	-	-	-	-	-	34	-	-	-	34	0.8
21	4	-	-	4	0.1	70	-	-	-	70	1.6
22	3	-	-	3	0.1	106	-	-	-	106	2.4
23	12	-	-	12	0.3	129	-	-	-	129	2.9
24	21	-	-	21	0.5	203	-	-	-	203	4.6
20-24	40	-	-	40	0.9	542	-	-	-	542	12.4
25	46	-	-	46	1.1	274	-	-	-	274	6.3
26	76	-	-	76	1.7	280	1	-	-	281	6.4
27	111	-	-	111	2.5	323	1	-	1	325	7.4
28	162	-	-	162	3.7	339	-	-	-	339	7.7
29	241	-	-	241	5.5	314	1	2	-	317	7.2
25-29	636	-	-	636	14.5	1,530	3	2	1	1,536	35.1
30-34	1,243	9	1	1,253	28.6	1,105	16	7	-	1,128	25.8
35-39	968	29	16	1,013	23.1	541	15	9	-	565	12.9
40-44	504	58	18	580	13.2	252	18	4	-	274	6.3
45-49	307	65	27	399	9.1	175	14	4	-	193	4.4
50-54	146	40	17	203	4.6	53	7	5	-	65	1.5
55-59	83	19	14	116	2.6	31	1	-	-	32	0.7
60-64	42	12	5	59	1.3	14	-	2	-	16	0.4
65+	55	12	13	80	1.8	11	-	-	-	11	0.3
Total	4,024	244	111	4,379	100.0	4,271	74	33	1	4,379	100.0
Percent	91.9	5.6	2.5	100.0		97.5	1.7	0.8	0.0	100.0	

TABLE 3.2 AGE IN COMBINATION AT MARRIAGE-2005

Age of Wife	Age of Husband										Total
	20-24	25-29	30-34	35-39	40-44	45-49	50-54	55-59	60-64	65+	
15-19	2	8	6	1	-	-	-	-	-	-	17
20-24	26	215	192	76	19	10	4	-	-	-	542
25-29	9	335	669	348	111	41	19	4	-	-	1,536
30-34	2	68	320	409	186	98	34	8	2	1	1,128
35-39	1	8	63	158	181	104	31	11	4	4	565
40-44	-	2	2	16	72	91	40	30	14	7	274
45-49	-	-	1	5	10	49	63	40	15	10	193
50-54	-	-	-	-	1	5	10	18	14	17	65
55-59	-	-	-	-	-	1	1	5	7	18	32
60-64	-	-	-	-	-	-	1	-	2	13	16
65+	-	-	-	-	-	-	-	-	1	10	11
Total	40	636	1,253	1,013	580	399	203	116	59	80	4,379

TABLE 3.3: MARRIAGES REGISTERED IN 2005 BY PLACE OF RESIDENCE OF HUSBAND AND WIFE AT MARRIAGE TIME AND AGE GROUP

DISTRICT	AGE GROUP																								Total
	15-19		20-24		25-29		30-34		35-39		40-44		45-49		50-54		55-59		60-64		65+				
	M	F	M	F	M	F	M	F	M	F	M	F	M	F	M	F	M	F	M	F	M	F	M	F	
Gaborone	-	4	13	123	169	326	290	235	240	111	144	46	61	28	32	9	15	4	9	-	6	1	979	887	
Francistown	-	3	1	37	61	124	117	78	89	30	37	19	25	15	13	2	8	1	5	1	1	-	357	310	
Lobatse	-	-	-	10	16	36	32	31	24	13	10	3	11	3	2	1	1	1	-	2	-	99	98		
Selibe Phikwe	-	1	2	22	22	64	77	56	60	31	30	9	28	8	19	-	5	-	2	-	3	2	248	193	
Orapa	-	1	-	9	22	15	31	14	22	10	7	3	15	1	2	-	2	-	1	-	1	-	103	53	
Jwaneng	-	-	-	9	17	22	33	12	24	8	13	6	11	5	4	-	7	-	-	-	1	-	110	62	
Sowa town	-	-	-	-	3	8	9	4	13	2	-	1	-	1	-	-	-	-	1	-	-	-	26	16	
Southern	-	-	3	54	34	136	61	95	68	58	56	41	40	28	27	10	14	8	8	7	22	4	333	441	
Ngwaketse South	-	-	3	35	27	103	41	72	53	46	39	30	31	20	20	7	8	8	5	7	17	2	244	330	
Borolong	-	-	-	17	5	27	15	22	13	10	12	9	8	7	3	5	-	3	-	5	2	73	98		
Ngwaketse West	-	-	-	2	2	6	5	1	2	2	5	2	1	-	-	-	1	-	-	-	-	-	16	13	
South East	-	-	2	23	19	68	36	46	44	27	25	19	11	5	13	5	5	1	1	2	1	-	157	196	
Kweneng East	-	2	4	48	56	175	139	147	105	68	71	29	54	19	21	9	13	2	6	2	8	1	477	502	
Kweneng West	-	-	1	11	12	14	25	9	16	6	10	4	7	5	3	2	6	-	1	-	1	1	82	52	
Kgatlang	-	-	4	26	20	54	41	48	32	21	16	11	13	6	10	5	2	3	4	-	6	-	148	174	
Central	-	2	1	105	88	308	190	219	142	110	86	58	86	50	42	17	24	9	15	4	22	1	696	883	
Serowe/Palapye	-	1	-	47	32	103	60	84	51	40	38	25	35	14	16	7	11	4	3	1	12	1	258	327	
Mahalapye	-	-	-	21	18	62	45	57	37	30	23	14	20	14	8	4	7	1	5	2	3	-	166	205	
Bobonong	-	-	-	11	9	44	30	20	14	13	5	5	6	11	6	2	3	1	2	1	3	-	78	108	
Boteti	-	-	-	11	18	32	21	16	10	9	5	2	13	3	4	-	-	-	-	-	-	-	71	73	
Tutume	-	1	1	15	11	67	34	42	30	18	15	12	12	8	8	4	3	3	5	-	4	-	123	170	
North East	-	2	1	7	12	25	24	17	19	12	7	3	6	4	3	3	2	1	3	-	4	1	81	75	
North West	-	-	3	31	37	90	77	72	75	30	40	13	16	5	2	1	4	1	2	-	1	-	257	243	
Ngamiland South	-	-	1	19	19	57	49	37	45	17	24	6	8	3	2	-	2	-	1	-	-	-	151	139	
Ngamiland West	-	-	-	5	9	16	13	20	21	9	10	3	3	1	-	1	2	-	-	-	-	-	58	55	
Chobe	-	-	2	7	9	17	15	15	9	4	5	3	5	-	-	-	-	1	1	-	-	-	46	47	
Ngamiland Delta	-	-	-	-	-	-	-	-	-	1	1	-	1	-	-	-	-	-	-	-	1	-	2	2	
Ghanzi	-	1	-	2	12	15	17	7	8	5	3	2	5	2	-	-	2	-	-	-	-	-	47	34	
CKGR	-	-	-	-	-	2	-	-	-	-	-	-	-	-	-	-	-	-	-	-	-	-	2	-	
Kgalagadi	-	-	1	12	14	27	24	18	14	13	13	7	4	6	5	-	1	-	-	-	1	-	77	83	
Kgalagadi South	-	-	-	8	10	22	16	14	11	7	6	4	4	4	1	-	1	-	-	-	1	-	50	59	
Kgalagadi North	-	-	1	4	4	5	8	4	3	6	7	3	-	2	4	-	-	-	-	-	-	-	27	24	
Other countries	-	1	4	13	22	28	27	20	18	10	12	-	6	2	5	1	5	-	-	-	-	-	99	75	
Not stated	-	-	-	-	-	1	1	-	-	-	-	-	-	-	-	-	-	-	-	-	-	-	1	1	
Total	-	17	40	542	636	1,536	1,253	1,128	1,013	565	580	274	399	193	203	65	116	31	59	16	80	11	4,379	4,378	
Percent	-	<i>0.4</i>	<i>0.9</i>	<i>12.4</i>	<i>14.5</i>	<i>35.1</i>	<i>28.6</i>	<i>25.8</i>	<i>23.1</i>	<i>12.9</i>	<i>13.2</i>	<i>6.3</i>	<i>9.1</i>	<i>4.4</i>	<i>4.6</i>	<i>1.5</i>	<i>2.6</i>	<i>0.7</i>	<i>1.3</i>	<i>0.4</i>	<i>1.8</i>	<i>0.3</i>	<i>100</i>		

TABLE 4.1 AGE AT MARRIAGE BY MARITAL STATUS AND SEX-2006

Age	MALES					FEMALES				
	Bachelor	Divorced	Widowed	Total	Percent	Spinster	Divorced	Widowed	Total	Percent
17	-	-	-	-	-	-	-	-	-	-
18	-	-	-	-	-	3	-	-	3	0.1
19	-	-	-	-	-	9	-	-	9	0.2
17-19	-	-	-	-	-	12	-	-	12	0.3
20	-	-	-	-	-	37	-	-	37	0.9
21	2	-	-	2	0.0	48	-	-	48	1.1
22	8	-	-	8	0.2	89	-	-	89	2.1
23	19	-	-	19	0.4	151	-	-	151	3.5
24	21	-	-	21	0.5	209	-	1	210	4.8
20-24	50	-	-	50	1.2	534	-	1	535	12.3
25	46	-	-	46	1.1	279	1	-	280	6.5
26	81	-	-	81	1.9	309	-	-	309	7.1
27	119	-	-	119	2.7	304	1	-	305	7.0
28	158	-	-	158	3.6	320	-	2	322	7.4
29	234	-	1	235	5.4	347	1	2	350	8.1
25-29	638	-	1	639	14.7	1,559	3	4	1,566	36.1
30-34	1,287	7	5	1,299	30.0	1,140	13	6	1,159	26.7
35-39	927	28	13	968	22.3	494	28	12	534	12.3
40-44	504	59	19	582	13.4	236	24	8	268	6.2
45-49	288	63	18	369	8.5	126	14	3	143	3.3
50-54	147	47	17	211	4.9	54	4	3	61	1.4
55-59	70	23	13	106	2.4	29	3	-	32	0.7
60-64	29	15	8	52	1.2	7	1	-	8	0.2
65+	44	7	8	59	1.4	17	-	-	17	0.4
					-					-
Total	3,984	249	102	4,335	100.0	4,208	90	37	4,335	100.0
Percent	91.9	5.7	2.4	100.0		97.1	2.1	0.9	100.0	

TABLE 4.2 AGE IN COMBINATION AT MARRIAGE-2006

Age of Wife	Age of Husband										Total	
	20-24	25-29	30-34	35-39	40-44	45-49	50-54	55-59	60-64	65+		
15-19	5	4	3	-	-	-	-	-	-	-	-	12
20-24	31	213	184	67	26	10	4	-	-	-	-	535
25-29	12	357	679	340	112	51	12	3	-	-	-	1,566
30-34	2	56	373	398	200	71	42	13	3	1	-	1,159
35-39	-	8	49	137	173	99	42	18	7	1	-	534
40-44	-	1	10	20	63	89	51	21	10	3	-	268
45-49	-	-	-	6	7	44	41	28	13	4	-	143
50-54	-	-	1	-	1	4	14	19	8	14	-	61
55-59	-	-	-	-	-	1	5	4	11	11	-	32
60-64	-	-	-	-	-	-	-	-	-	8	-	8
65+	-	-	-	-	-	-	-	-	-	17	-	17
Total	50	639	1,299	968	582	369	211	106	52	59	-	4,335

TABLE 4.3: MARRIAGES REGISTERED IN 2006 BY PLACE OF RESIDENCE OF HUSBAND AT MARRIAGE TIME AND AGE GROUP

DISTRICT	AGE GROUP																						Total	
	15-19		20-24		25-29		30-34		35-39		40-44		45-49		50-54		55-59		60-64		65+			
	M	F	M	F	M	F	M	F	M	F	M	F	M	F	M	F	M	F	M	F	M	F		
Gaborone	-	4	17	88	115	214	196	145	111	88	82	45	51	24	23	6	13	4	9	1	2	-	619	619
Francistown	-	1	5	68	82	192	150	129	123	40	50	33	36	15	19	4	12	-	2	-	3	-	482	482
Lobatse	-	2	1	10	20	37	26	27	18	8	12	9	11	5	6	5	4	3	3	-	6	1	107	107
Selibe Phikwe	-	1	1	34	31	82	64	64	58	30	32	13	20	8	16	3	7	-	5	1	2	-	236	236
Jwaneng	-	-	-	5	5	12	6	11	9	5	8	1	5	-	-	-	1	1	1	-	-	-	35	35
Sowa town	-	-	-	4	2	4	6	11	10	2	4	1	2	2	-	-	-	-	-	-	-	-	24	24
Southern																								
Ngwaketse South	-	-	-	31	37	109	107	103	74	43	43	24	36	12	20	15	13	6	7	3	16	7	353	353
Borolong	-	-	-	21	21	40	34	26	24	16	17	11	11	2	8	2	3	2	1	1	4	2	123	123
Ngwaketse West	-	-	1	2	-	4	6	7	4	3	5	5	4	2	2	4	4	1	1	-	1	-	28	28
South East	-	1	5	25	45	108	75	75	75	48	48	16	19	12	14	2	5	1	2	1	2	1	290	290
Kweneng East	-	-	7	47	37	125	106	88	66	46	62	24	28	13	27	4	8	3	1	-	10	2	352	352
Kweneng West	-	-	-	8	6	17	17	13	8	4	8	2	3	1	2	-	1	-	-	-	1	1	46	46
Kgatleng	-	-	1	17	30	83	78	80	63	36	26	14	29	10	11	3	3	1	1	-	2	-	244	244
Central	-	2	10	172	212	610	465	406	363	171	209	77	117	41	67	11	34	11	19	1	10	4	1,506	1,506
Serowe/Palapye	-	-	2	47	64	198	147	130	116	56	65	23	40	11	21	3	9	4	7	-	3	2	474	474
Mahalapye	-	2	5	39	35	108	81	69	77	22	37	16	13	6	10	3	4	2	3	1	3	-	268	268
Bobonong	-	-	-	7	14	38	30	21	19	14	12	5	4	2	4	1	4	-	1	-	-	-	88	88
Boteti	-	-	1	17	12	25	23	20	13	10	7	6	15	7	10	-	3	-	1	-	-	-	85	85
Tutume	-	-	-	15	23	43	37	36	22	13	23	4	5	4	1	1	5	1	-	-	1	-	117	117
North East	-	-	1	6	6	16	14	10	7	8	6	1	4	1	3	1	1	-	1	-	-	-	43	43
North West	-		1		38		62		38		22		21		8		6		4		3		203	
Ngamiland South	-	-	-	17	29	49	43	46	25	17	17	8	14	3	5	1	5	1	3	-	2	1	143	143
Ngamiland West	-	-	-	4	3	10	9	9	7	3	2	1	3	-	2	1	1	-	-	-	1	-	28	28
Chobe	-	-	1	4	6	12	10	9	6	3	3	1	4	1	1	1	-	1	1	-	-	-	32	32
Ghanzi	-	1	1	5	5	12	8	14	15	8	6	-	4	2	3	-	-	-	-	-	-	-	42	42
Kgalagadi South	-	-	1	10	8	15	17	13	12	5	4	3	2	-	2	1	-	-	1	-	-	-	47	47
Kgalagadi North	-	-	-	4	3	13	9	3	6	6	3	2	6	-	1	-	-	1	1	-	-	-	29	29
Total	-	12	50	535	639	1,566	1,299	1,159	968	534	582	268	369	143	211	61	106	32	52	8	59	17	4,335	4,335
Percent	-	<i>0.3</i>	<i>1.2</i>	<i>12.3</i>	<i>14.7</i>	<i>36.1</i>	<i>30.0</i>	<i>26.7</i>	<i>22.3</i>	<i>12.3</i>	<i>13.4</i>	<i>6.2</i>	<i>8.5</i>	<i>3.3</i>	<i>4.9</i>	<i>1.4</i>	<i>2.4</i>	<i>0.7</i>	<i>1.2</i>	<i>0.2</i>	<i>1.4</i>	<i>0.4</i>	<i>100.0</i>	<i>100.0</i>

TABLE 5.0 PREVIOUS MARITAL STATUS OF PERSONS REMARRYING, 2003-2006

		Females							
Year of marriage		Total	Percent	Spinster	Percent	Divorced	Percent	Widowed	Percent
Males									
2003	Bachelor	3702	92.2	3653	93.2	30	43.5	19	67.9
	Divorced	217	5.4	181	4.6	30	43.5	6	21.4
	Widowed	97	2.4	85	2.2	9	13.0	3	10.7
	Total	4016	100.0	3919	100.0	69	100.0	28	100.0
2004	Bachelor	3997	92.4	3941	93.5	40	48.8	16	53.3
	Divorced	239	5.5	199	4.7	35	42.7	5	16.7
	Widowed	89	2.1	73	1.7	7	8.5	9	30.0
	Total	4325	100.0	4213	100.0	82	100.0	30	100.0
2005	Bachelor	4024	91.9	3962	92.8	36	48.6	25	75.8
	Divorced	244	5.6	213	5.0	28	37.8	3	9.1
	Widowed	111	2.5	96	2.2	10	13.5	5	15.2
	Total	4379	100.0	4271	100.0	74	100.0	33	100.0
<i>* previous marital status of one woman not known</i>									
2006	Bachelor	3984	91.9	3926	93.3	38	42.2	20	54.1
	Divorced	249	5.7	199	4.7	42	46.7	8	21.6
	Widowed	102	2.4	83	2.0	10	11.1	9	24.3
	Total	4335	100.0	4208	100.0	90	100.0	37	100.0

