

STATISTICS BOTSWANA

GROSS DOMESTIC PRODUCT

FOURTH QUARTER OF 2018

Copyrights © Statistics Botswana 2019



Private Bag 0024, Gaborone.

TOLL FREE NUMBER: 0800600200 Tel: (+267) 367 1300 Fax: (+267) 395 2201

E-mail: info@statsbots.org.bw Website: <http://www.statsbots.org.bw>

Table of Contents

1.	Preface	3.
2.	Gross Domestic Product (GDP)	4.
2.1	Revisions in this release	4.
2.2	Fourth quarter GDP	4.
2.2.2	Components of GDP by Type of Expenditure	6.
3.	Annual National Accounts	7.
3.1	Annual Percentage changes	7.
3.2	Gross Domestic Expenditure	8.
Figure 1:	Real GDP growth rates	5.
Figure 2:	Components of Gross Domestic Expenditure at 2006 prices	6.
Figure 3:	Annual percentage change in real GDP	8.
Figure 4:	Components of Gross Domestic Expenditure at constant 2006 price	8.

1. Preface

The statistical release contains the fourth quarter of 2018 Gross Domestic Product estimates by economic activity and components of final demand at current and constant prices.

Botswana's National Accounts are compiled according to the 1993 System of National Accounts (1993 SNA). The accounts presented in this publication adhere to the enhanced General Data Dissemination System (e-GDDS) of the International Monetary Fund (IMF), which sets out standards on coverage, periodicity and timeliness of data.

The estimates are provisional and subject to change. First estimates are normally based on limited data and hence cannot be precise and absolute. The figures are revised after receiving finalized or audited data from companies in which some differences and inconsistencies in the previously published data may be observed.

These estimates are not seasonally adjusted hence the variations may differ depending on the quarters.

The Gross Domestic Product (GDP) for the fourth quarter of 2018 was P48, 491.6 million compared to a revised P48, 699.3 million registered during the previous quarter. This represents a quarterly decrease of 0.3 percent in nominal terms between the two periods. During the quarter under review, Trade, Hotels & Restaurants remained the major contributor to GDP by 19.8 percent, followed by Mining & quarrying, General Government and Finance & Business services at 15.8, 14.5 and 14.2 percent respectively. The contribution of other sectors was below 6.7 percent with Water & Electricity being the lowest at 1.0 percent.

Real Gross Domestic Product for the fourth quarter of 2018 increased by 4.1 percent. The increase was attributed to the significant growth in real value added of Mining and Transport & Communications industries by 13.9 and 7.1 percent respectively.

Statistics Botswana acknowledges and appreciates the contribution of all stakeholders in the production of this report.

For more information and further enquiries, contact the Directorate of Stakeholder Relations at 3671300 or info@statsbots.org.bw. All Statistics Botswana outputs/publications are available on the website at www.statsbots.org.bw and at the Statistics Botswana Information Resource Center (Head-Office, Gaborone).



Dr. Burton S. Mguni
Statistician General
March 2019

2. Gross Domestic Product

2.1 Revisions in this release

Revisions have been made to the quarterly Gross Domestic Product (GDP) estimates published in December 2018. The changes were due to the updated source data and have affected Water & Electricity, Transport & communications and Finance & Business services industries.

Table A1: Revisions in real percentage changes for the same quarters of the previous year

Industries	Publication December 2018							Publication March 2019						
	2017 Q1	2017 Q2	2017 Q3	2017 Q4	2018 Q1	2018 Q2	2018 Q3	2017 Q1	2017 Q2	2017 Q3	2017 Q4	2018 Q1	2018 Q2	2018 Q3
Water & Electricity	5.6	62.5	151.8	2.9	92.8	3.3	42.6	2.5	58.8	145.6	9.1	92.8	2.9	24.6
Transport & Communications	4.4	6.0	4.5	3.8	6.5	6.0	5.8	4.4	6.0	4.5	3.8	6.5	6.0	5.9
Finance & Business Services	4.4	4.5	3.7	3.7	4.9	5.2	5.2	4.4	4.5	3.7	3.7	4.9	5.2	5.1
Total GDP	0.9	0.9	3.5	6.4	4.5	5.2	4.2	0.9	0.8	3.5	6.4	4.5	5.2	4.0

Table A2: Key figures

	Real Gross Domestic Product		Total Final Consumption		Gross Fixed Capital Formation		
	Percentage Change						
	Quarter-on-Quarter	Year-on-Year	Quarter-on-Quarter	Year-on-Year	Quarter-on-Quarter	Year-on-Year	
First quarter 2014		-2.5	3.3	2.9	2.4	-0.7	9.3
Second quarter 2014		3.3	4.6	-4.5	3.5	-1.8	-3.5
Third quarter 2014		1.3	6.0	-0.5	6.1	-6.2	-5.7
Fourth quarter 2014		0.6	2.7	5.0	2.8	16.3	6.3
First quarter 2015		-2.4	2.8	2.3	2.1	-6.1	0.5
Second quarter 2015		0.2	-0.3	-3.1	3.6	7.8	10.4
Third quarter 2015		-3.9	-5.4	1.9	6.1	4.0	22.4
Fourth quarter 2015		2.6	-3.6	1.6	2.6	-2.0	3.2
First quarter 2016		3.5	2.3	2.3	2.6	-5.8	3.5
Second quarter 2016		1.8	3.9	-4.9	0.8	11.0	6.6
Third quarter 2016		-1.1	6.9	3.8	2.6	-1.4	1.1
Fourth quarter 2016		0.1	4.3	1.9	2.9	0.3	3.5
First quarter 2017		0.2	0.9	1.2	1.9	-12.6	-3.9
Second quarter 2017		1.8	0.8	-0.7	6.2	-4.2	-17.1
Third quarter 2017		1.5	3.5	4.3	6.7	8.7	-8.6
Fourth quarter 2017		2.9	6.4	0.8	5.6	4.2	-5.1
First quarter 2018		-1.6	4.5	1.1	5.4	-2.6	5.7
Second quarter 2018		2.5	5.2	-0.8	5.4	1.5	12.0
Third quarter 2018		0.3	4.0	1.1	2.2	1.9	5.0
Fourth quarter 2018		3.0	4.1	0.8	2.2	4.0	4.8

2.2 First quarter GDP

2.2.1 Production Account

The estimated GDP at current prices for the fourth quarter of 2018 was P48, 491.6 million compared to a revised P48, 699.3 million registered in the third quarter of 2018 (See table 1).

Real GDP at constant 2006 prices for the fourth quarter of 2018 was P24, 850.9 million compared to P24, 126.2 million recorded in the third quarter of 2018 (See table 3).

The domestic economy increased by 4.1 percent in the fourth quarter of 2018 compared to a rise of 6.4 percent recorded in the same quarter of 2017. The growth was attributed to real value added of Mining, Transport & Communications and Finance & Business Services which increased by 13.9, 7.1 and 4.9 percent

respectively. All other industries recorded positive growths of more than 2.0 percent with the exception of Water & Electricity and Trade, Hotels & Restaurants which decreased by a similar growth rate of 0.2 percent. (See table 4).

The increase in the real Mining value added of 13.9 percent was mainly driven by Diamond value added which increased significantly by 15.4 percent. Diamond production in carats rose by 15.4 percent in the fourth quarter of 2018 compared to an increase of 0.2 percent recorded in the same quarter of 2017. Orapa production increased by 20.0 percent carats driven by planned favorable grade and higher plant utilization. Jwaneng mine production increased by 9.0 percent following an increase in tonnes treated.

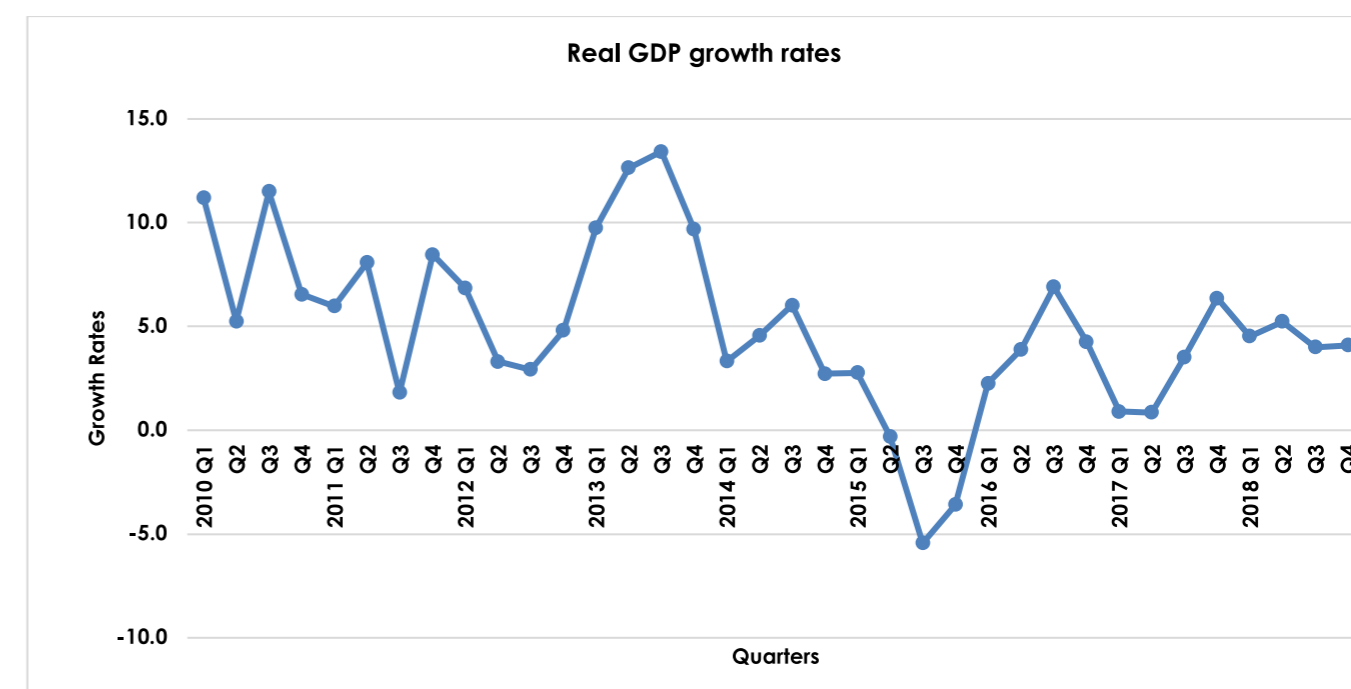
Transport and Communications value added increased by 7.1 percent in the fourth quarter of 2018. The growth was mainly attributed to the increase in real value added of Rail, Air transport and Post & Communications by 12.7, 9.3 and 6.8 percent respectively.

Water and Electricity value added at constant 2006 prices for the fourth quarter of 2018 was P266.0 million compared to P266.5 million registered in the same quarter of 2017, recording a decline of 0.2 percent. In the fourth quarter of 2018, Electricity recorded a positive value added of P30.1 million compared to P33.1 million registered in the same quarter of 2017 leading to a negative growth of 9.3 percent. The decrease in the Electricity real value added is attributed to a decline in local electricity production by 45.2 percent. Imports of Electricity went up by 138.2 percent during the quarter under review because Morupule B power station was not operating at full capacity, only two units were functional. Furthermore, in October 2018 all the four units were closed under maintenance for ten days.

Trade, Hotels and Restaurants real value added decreased by 0.2 percent in the fourth quarter of 2018 compared to a growth of 17.0 percent registered in the same quarter of the previous year. The negative growth is attributed to a decrease in real value added of wholesale sub sector by 26.7 percent. Wholesale value added went down because downstream diamond industries contribution slowed down during the quarter under review as compared to the same quarter of the previous year.

Non-mining GDP increased by 3.0 percent in the fourth quarter of 2018 compared to 7.2 percent registered in the same quarter of the previous year.

Figure 1: Real GDP growth rates



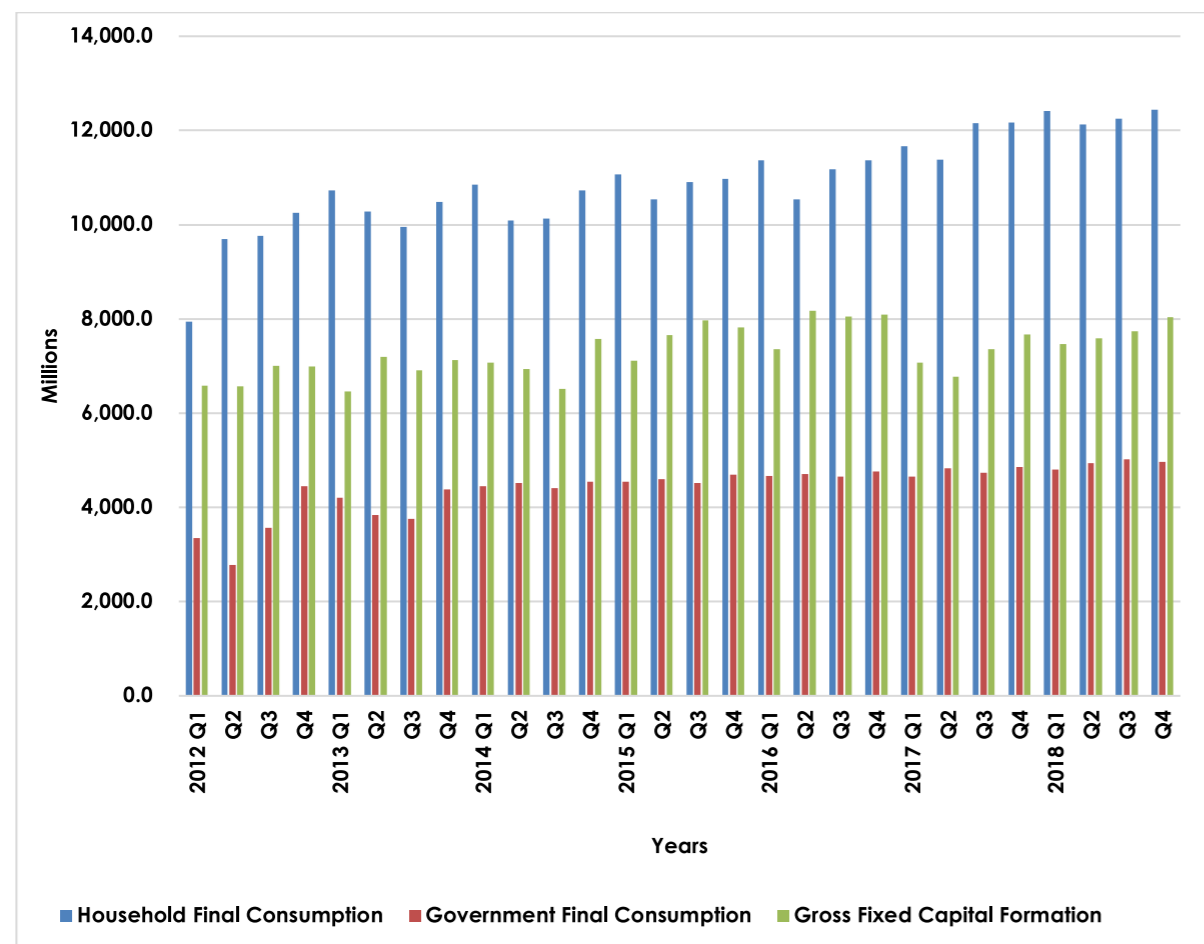
2.2.2 Components of GDP by Type of Expenditure

Total final consumption expenditure recorded an increase of 2.2 percent in the fourth quarter of 2018, however in the same quarter of the previous year it rose by 5.6 percent. Household final consumption went up by 2.2 percent, Government final consumption rose by 2.1 percent and Fixed capital formation increased by 4.8 percent in the quarter under review.

In the case of foreign trade, real exports of goods and services increased by 4.8 percent in the fourth quarter of 2018 compared to a decrease of 7.3 percent realized in the same quarter of 2017.

Real Imports of goods and services recorded a growth of 27.3 percent during the quarter under review, compared to a 14.4 percent decline realized in the same quarter of the previous year.

Figure 2: Components of Gross Domestic Expenditure at 2006 prices



3. Annual National Accounts

3.1 Annual Percentage changes

Table A3: Key figures at constant 2006 prices

	2014	2015	2016	2017	2018
Total final consumption	3.6	3.6	2.2	5.1	3.8
Gross fixed capital formation	1.5	8.8	3.6	-8.8	6.8
Exports	7.7	-16.3	0.4	-10.9	4.1
Imports	0.2	2.3	-5.1	-23.4	12.1
Gross domestic product	4.1	-1.7	4.3	2.9	4.5
GDP per Capita	2.2	-3.3	2.7	1.3	2.9

GDP at current prices stood at P189, 868.5 million in 2018 compared to P180, 102.1 million in 2017, recording an increase of 5.4 percent.

Real GDP increased by 4.5 percent in 2018 compared to a 2.9 percent increase in 2017. The rise in real GDP was mainly attributed to Water & Electricity, Mining and Transport & Communications industries which recorded an increase in value added of 21.0, 7.4, and 6.4 percent respectively. (See table 4).

Water and Electricity value added at constant 2006 prices for the year 2018 was P1, 055.4 million compared to P872.0 million registered in the previous year, recording an increase of 21.0 percent. In 2018, Electricity recorded a positive value added of P121.1 million compared to a negative value added of P38.0 million registered in the previous year.

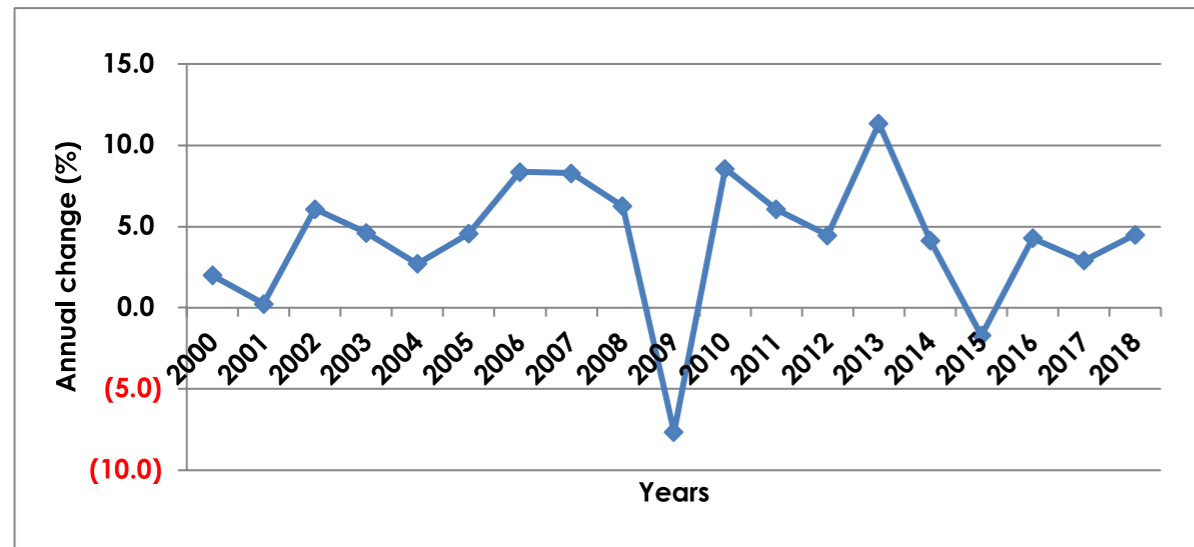
An increase of 7.4 percent in the real value added of the Mining sector was mainly due to Diamond value added which increased by 6.9 percent. Diamond production in carats rose by 6.8 percent in 2018 compared to an increase of 9.9 percent recorded in the previous year.

Contribution to GDP by industry is shown in table 2. In 2018, Trade, Hotels & Restaurants and Mining industries remained major contributors to GDP, their contributions stood at 19.3 percent and 16.4 percent respectively (See table 2).

Table A4: Annual percentage change in Real GDP by Economic Activity

	2014	2015	2016	2017	2018
Agriculture	-0.4	0.3	0.6	2.2	2.9
Mining	0.5	-19.6	-3.5	-11.1	7.4
Manufacturing	0.5	3.2	1.6	2.2	3.6
Water & Electricity	-55.8	7.0	95.2	39.9	21.0
Construction	3.7	4.0	4.2	3.5	3.7
Trade, Hotels & Restaurants	10.7	-3.9	13.4	9.0	3.2
Transport and Communication	9.8	4.5	6.6	4.7	6.4
Business Service	2.7	4.5	3.3	4.1	5.0
General Government	4.6	3.3	2.4	1.5	3.0
Social and personal Services	4.2	3.6	3.5	2.8	3.6
Total Value Added	4.1	-2.0	4.8	2.8	4.5
Taxes Less Subsidies	4.9	1.1	0.0	3.8	4.3
Total GDP	4.1	-1.7	4.3	2.9	4.5

Figure 3: Annual percentage change in real GDP



3.2 Gross Domestic Expenditure

Real Gross Domestic Expenditure growth was 4.1 percent in 2018. Total final demand increased by 3.8 percent compared to 5.1 percent realised in 2017. Gross Fixed Capital Formation went up by 6.8 percent.

Table A5: Annual percentage change in Real Domestic Expenditure

	2016	2017	2018
Total final consumption expenditure	2.3	5.1	3.8
Household final consumption expenditure	2.2	6.7	3.9
Final consumption of NPISH	3.0	3.3	3.7
Government final consumption expenditure	2.3	1.5	3.4
Gross Capital formation expenditure	3.6	-8.8	6.8
Gross Domestic expenditure	-0.3	0.03	4.1

Figure 4: Components of Gross Domestic Expenditure at constant 2006 price

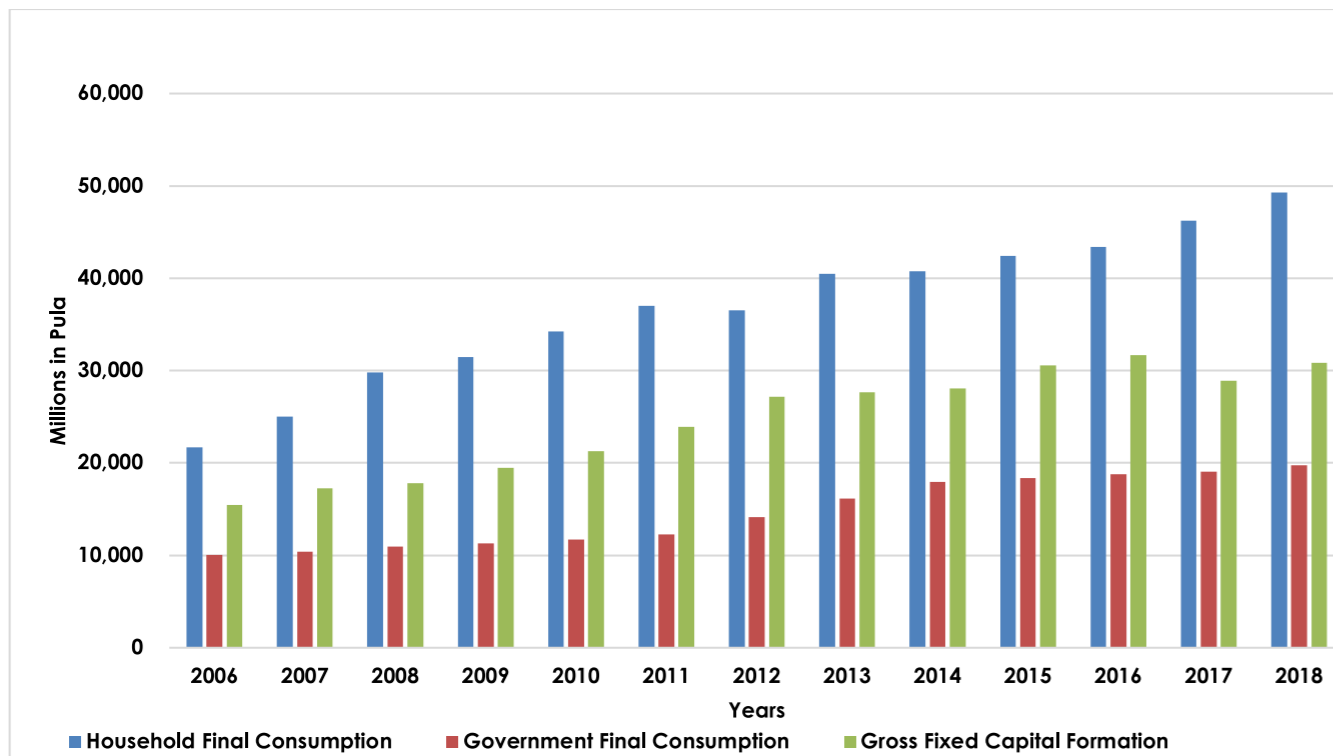


Table A6: GDP per capita (Pula)

Year	Nominal GDP per capita	Real GDP per capita
1994	7,869.2	22,793.4
1995	8,800.8	23,789.8
1996	10,550.8	24,562.5
1997	11,707.1	25,958.7
1998	12,615.7	25,437.9
1999	15,627.3	27,583.6
2000	17,991.2	27,814.8
2001	19,077.2	27,229.8
2002	20,097.5	28,349.6
2003	21,311.8	29,113.9
2004	23,650.1	29,350.0
2005	28,026.8	30,121.2
2006	32,038.3	32,038.3
2007	35,727.9	34,050.1
2008	39,021.1	35,509.2
2009	37,656.1	32,186.9
2010	43,705.9	34,298.6
2011	51,844.3	35,702.1
2012	53,116.0	36,507.0
2013	59,313.9	39,846.8
2014	67,867.9	40,743.3
2015	66,822.0	39,380.8
2016	76,840.9	40,450.2
2017	79,903.2	40,992.9
2018	82,959.1	42,169.3

Table 1: Value Added by Kind of Economic Activity at Current Prices (P million)

Calendar year	Agriculture	Mining	Manufacturing	Water & Electricity	Construction	Trade, Hotels & Restaurants	Transport & Communication	Finance & Business Service	General Government	Social & Personal Services	Value Added	Taxes on Import	Other Taxes on products	Subsidies	Total GDP
2004	949.9	10,801.5	2,334.8	806.8	2,376.3	5,116.3	1,449.5	5,330.5	6,151.8	2,110.2	37,427.5	2,746.9	2,086.7	-224.6	42,036.6
2005	927.9	16,105.1	2,512.0	714.9	2,417.8	5,498.9	1,825.1	5,918.6	7,195.5	2,544.4	45,660.2	3,174.9	2,172.2	-255.1	50,752.2
2006	1,210.7	19,019.0	3,123.1	785.1	2,838.0	7,032.3	2,250.5	6,675.4	7,818.5	2,938.9	53,691.6	3,428.8	2,276.3	-289.8	59,106.9
2007	1,504.7	19,567.7	4,206.6	751.5	3,544.1	8,243.6	2,697.3	7,653.0	8,887.4	3,255.8	60,311.7	4,290.5	2,879.7	-329.2	67,152.7
2008	1,887.5	18,643.5	4,278.9	654.1	3,726.9	10,047.1	3,303.9	9,316.7	10,899.5	3,847.4	66,605.5	4,701.4	3,788.1	-374.0	74,720.9
2009	2,071.0	11,209.6	4,662.3	317.2	4,495.0	11,162.8	3,993.0	9,694.7	12,316.3	4,593.3	64,515.2	4,535.3	4,836.6	-424.9	73,462.3
2010	2,161.3	16,660.8	5,548.3	411.9	5,056.1	13,084.3	4,470.8	11,609.7	13,377.3	5,242.7	77,623.1	4,425.0	5,252.1	-432.7	86,867.5
2011	2,636.0	24,529.1	6,074.2	-58.8	6,247.3	15,595.3	5,113.9	13,978.7	14,777.6	5,881.2	94,774.4	5,055.4	5,598.3	-448.3	104,979.8
2012	2,961.3	19,286.5	6,523.2	-621.2	7,464.5	16,896.7	6,325.3	16,467.8	16,923.7	6,750.2	98,978.1	5,560.5	5,804.8	-472.9	109,870.4
2013	2,876.9	24,243.4	7,285.1	-123.2	7,997.9	21,211.3	6,906.2	17,717.0	17,731.0	7,344.1	113,189.7	6,403.1	6,083.2	-517.7	125,158.3
2014	3,045.3	32,403.3	7,740.3	-581.5	8,689.7	26,182.3	7,788.2	19,284.3	19,946.0	8,138.4	132,636.4	7,107.4	6,691.5	-566.6	145,868.6
2015	3,215.0	25,962.2	8,441.7	-219.2	9,606.6	23,711.4	8,559.3	21,517.5	22,491.1	8,653.0	131,938.6	7,541.6	7,205.1	-619.0	146,066.3
2016	3,496.1	34,912.5	8,859.5	395.0	10,574.9	30,996.7	9,642.7	23,349.0	23,926.8	9,259.3	155,412.5	8,054.3	7,782.0	-685.2	170,563.7
2017	3,583.8	31,261.7	9,214.5	1,770.1	11,487.6	35,058.6	10,622.7	25,049.6	25,839.7	9,899.4	163,787.7	8,656.3	8,378.5	-720.4	180,102.1
2018	3,794.3	31,065.7	9,794.7	2,229.1	12,574.6	36,570.0	11,508.7	26,895.6	27,538.7	10,502.2	172,473.5	9,113.3	9,066.8	-785.1	189,868.5
2004 Q1	185.5	2,721.9	569.5	183.1	604.5	1,261.8	346.5	1,261.5	1,429.6	509.3	9,073.3	549.5	681.8	-51.3	10,253.3
Q2	317.6	1,348.6	582.2	194.3	586.3	1,294.1	337.0	1,253.5	1,522.9	513.2	7,949.9	768.1	412.6	-57.4	9,073.2
Q3	265.1	3,647.8	571.9	208.5	607.9	1,279.8	375.6	1,389.7	1,602.8	537.0	10,486.1	719.3	326.1	-54.7	11,476.8
Q4	181.6	3,083.2	611.2	220.9	577.5	1,280.5	390.5	1,425.8	1,596.4	550.7	9,918.3	710.0	666.3	-61.1	11,233.4
2005 Q1	222.2	4,040.3	606.6	160.4	576.5	1,237.7	404.7	1,405.4	1,615.8	588.7	10,858.3	798.4	744.7	-58.3	12,343.1
Q2	254.2	2,939.0	620.9	174.0	595.1	1,323.6	416.5	1,427.3	1,693.5	610.0	10,054.2	718.5	419.1	-65.2	11,126.7
Q3	288.6	5,341.3	634.7	183.7	615.1	1,405.6	492.5	1,518.6	1,852.6	661.1	12,993.9	646.9	609.0	-62.2	14,187.7
Q4	162.9	3,784.5	649.8	196.7	631.0	1,532.0	511.4	1,567.3	2,033.6	684.7	11,753.8	1,011.1	399.3	-69.5	13,094.7
2006 Q1	350.2	4,483.6	715.1	170.4	664.5	1,676.4	524.4	1,648.8	1,723.6	718.3	12,675.4	766.1	626.8	-66.3	14,002.0
Q2	258.4	3,463.4	722.3	177.9	685.7	1,700.0	550.0	1,649.0	2,001.7	725.2	11,933.6	848.6	501.7	-74.0	13,209.9
Q3	355.1	5,746.3	812.6	205.4	803.9	1,789.6	569.2	1,734.1	2,028.3	756.8	14,801.2	951.5	533.6	-70.6	16,215.7
Q4	247.0	5,325.6	873.1	231.4	683.9	1,866.3	606.9	1,643.5	2,064.9	738.7	14,281.4	862.6	614.2	-78.9	15,679.3
2007 Q1	319.9	4,938.4	938.7	195.3	774.8	1,927.0	603.9	1,897.3	2,021.5	761.2	14,378.0	814.2	617.0	-75.3	15,733.9
Q2	478.6	3,760.5	1,092.6	193.6	859.3	2,037.4	669.8	1,907.7	2,251.5	789.7	14,040.8	1,145.0	672.7	-84.1	15,774.4
Q3	456.6	6,165.2	1,100.1	183.8	898.7	2,035.8	698.4	1,974.1	2,299.5	854.7	16,666.9	1,160.1	767.4	-80.2	18,514.2
Q4	249.6	4,703.6	1,075.2	178.8	1,011.3	2,243.4	725.1	1,873.9	2,314.7	850.2	15,225.9	1,171.3	822.6	-89.6	17,130.1
2008 Q1	416.0	4,966.0	940.5	150.8	853.8	2,269.1	779.2	2,032.1	2,326.4	900.4	15,634.3	1,130.1	805.7	-85.5	17,484.6
Q2	452.7	3,584.5	1,123.3	159.0	918.1	2,452.9	806.5	2,171.4	2,782.2	906.0	15,356.7	1,171.4	854.4	-95.5	17,286.9
Q3	558.8	5,395.9	1,132.1	161.1	948.1	2,583.8	844.7	2,514.3	2,864.1	1,003.0	18,006.0	1,194.7	1,039.3	-91.1	20,148.9
Q4	460.0	4,697.1	1,083.0	183.2	1,006.8	2,741.2	873.5	2,598.9	2,926.9	1,037.9	17,608.6	1,205.1	1,088.6	-101.8	19,800.4
2009 Q1	428.6	1,950.5	1,100.1	83.1	1,060.6	2,725.5	909.6	2,374.6	2,881.6	1,123.8	14,637.9	1,007.4	1,047.9	-97.1	16,596.0
Q2	535.8	3,272.8	1,202.2	79.2	1,137.9	2,882.6	950.4	2,365.8	3,093.0	1,122.8	16,642.5	1,089.0	1,108.7	-108.5	18,731.5
Q3	603.5	2,519.6	1,147.9	65.2	1,199.7	2,841.3	1,031.5	2,377.3	3,156.2	1,191.7	16,134.0	1,155.4	1,286.0	-103.5	18,471.9
Q4	503.1	3,466.7	1,212.1	89.6	1,096.9	2,713.4	1,101.5	2,577.1	3,185.5	1,154.9	17,101.0	1,283.6	1,394.1	-115.7	19,663.0
2010 Q1	490.8	3,242.2	1,277.1	128.2	1,153.3	2,943.0	1,040.7	2,703.1	3,136.9	1,261.5	17,376.6	1,082.3	1,257.7	-98.9	19,617.7
Q2	595.0	3,759.1	1,357.3	101.1	1,150.6	3,267.1	1,080.3	2,881.7	3,179.0	1,302.7	18,673.9	1,049.8	1,301.7	-110.5	20,914.9
Q3	580.3	5,085.7	1,412.3	85.5	1,351.0	3,496.6	1,165.3	2,911.5	3,338.1	1,355.8	20,782.1	1,102.3	1,327.7	-105.4	23,106.7
Q4	495.2	4,573.8	1,501.6	97.1	1,401.3	3,377.5	1,184.5	3,113.3	3,723.4	1,322.8	20,790.5	1,190.5	1,364.9	-117.8	23,228.1

Table 1 Continued: Value Added by Kind of Economic Activity at Current Prices (P million)

Calendar year	Agriculture	Mining	Manufacturing	Water & Electricity	Construction	Trade, Hotels & Restaurants	Transport & Communication	Finance & Business Service	General Government	Social & Personal Services	Value Added	Taxes on Import	Other Taxes on products	Subsidies	Total GDP
2011 Q1	499.9	5,824.8	1,362.8	-0.1	1,424.7	3,821.3	1,201.2	3,162.6	3,021.0	1,328.4	21,646.7	897.4	1,433.1	-114.3	23,862.8
Q2	667.8	6,113.8	1,426.5	-11.2	1,472.6	3,716.6	1,235.1	3,352.9	3,725.1	1,441.8	23,141.1	1,412.1	1,473.4	-102.2	25,924.5
Q3	716.1	6,598.8	1,585.0	-39.6	1,638.1	3,839.1	1,324.9	3,624.8	3,677.8	1,492.5	24,457.6	1,412.0	1,201.6	-113.9	26,957.3
Q4	752.2	5,991.6	1,699.8	-7.9	1,711.8	4,218.3	1,352.7	3,838.5	4,353.7	1,618.4	25,529.1	1,333.9	1,490.2	-117.9	28,235.3
2012 Q1	728.0	4,617.1	1,601.4	-23.3	1,830.9	4,211.2	1,509.2	3,790.4	3,681.4	1,609.6	23,555.9	1,235.0	1,368.9	-115.8	26,044.1
Q2	796.0	5,524.0	1,627.7	-265.7	1,859.2	4,173.6	1,564.6	4,072.5	4,145.2	1,687.8	25,184.9	1,267.2	1,390.5	-116.6	27,726.0
Q3	808.9	4,443.1	1,668.5	-167.5	1,878.9	4,258.9	1,617.1	4,235.0	4,268.4	1,709.6	24,721.0	1,431.0	1,509.0	-119.2	27,541.9
Q4	628.4	4,702.3	1,625.6	-164.7	1,895.5	4,253.0	1,634.4	4,369.9	4,828.7	1,743.1	25,516.2	1,627.2	1,536.4	-121.4	28,558.5
2013 Q1	649.3	4,670.5	1,725.8	-4.6	1,954.4	4,822.0	1,661.8	4,296.6	3,981.9	1,742.6	25,500.4	1,580.3	1,468.5	-124.4	28,424.8
Q2	780.6	7,933.7	1,784.4	-126.1	1,988.8	5,006.7	1,677.4	4,377.4	4,346.5	1,833.7	29,603.0	1,511.0	1,472.5	-125.6	32,461.0
Q3	704.0	6,124.0	1,865.3	63.5	2,000.0	5,451.6	1,749.6	4,424.3	4,422.3	1,864.2	28,668.7	1,571.7	1,557.5	-132.3	31,665.4
Q4	743.0	5,515.3	1,909.6	-56.0	2,054.7	5,931.0	1,817.4	4,618.7	4,980.4	1,903.6	29,417.6	1,740.1	1,584.8	-135.4	32,607.1
2014 Q1	721.2	7,270.1	1,784.5	-295.0	2,139.5	6,378.4	1,924.2	4,637.1	4,716.9	1,982.8	31,259.8	1,759.4	1,636.5	-141.5	34,514.3
Q2	774.2	9,401.9	1,898.4	110.9	2,205.0	6,553.9	1,922.3	4,734.7	4,875.4	2,020.5	34,497.1	1,714.3	1,654.3	-140.0	37,725.7
Q3	762.1	7,289.1	1,986.3	-25.5	2,161.4	6,674.8	1,954.3	4,905.1	5,055.7	2,053.3	32,816.8	1,788.3	1,694.0	-143.4	36,155.8
Q4	787.8	8,442.1	2,071.1	-371.9	2,183.8	6,575.3	1,987.3	5,007.4	5,297.8	2,081.9	34,062.7	1,845.4	1,706.6	-141.8	37,472.9
2015 Q1	771.8	7,620.6	2,044.9	-296.6	2,331.0	6,132.7	2,022.4	5,063.6	5,376.4	2,118.8	33,185.5	1,836.3	1,690.8	-148.9	36,563.6
Q2	812.5	7,646.6	2,102.8	-4.2	2,420.9	5,747.7	2,089.3	5,324.5	5,562.5	2,139.5	33,842.2	1,887.1	1,768.0	-153.4	3

Table 2: Contribution of Gross Value Added to GDP by Kind of Economic Activity at Current Prices

Calendar year	Agriculture	Mining	Manufacturing	Water & Electricity	Construction	Trade, Hotels & Restaurants	Transport & Communication	Finance & Business Service	General Government	Social & Personal Services	Value Added	Taxes on Import	Other Taxes on products	Subsidies	Total GDP
2004	2.3	25.7	5.6	1.9	5.7	12.2	3.4	12.7	14.6	5.0	89.0	6.5	5.0	-0.5	100.0
2005	1.8	31.7	4.9	1.4	4.8	10.8	3.6	11.7	14.2	5.0	90.0	6.3	4.3	-0.5	100.0
2006	2.0	32.2	5.3	1.3	4.8	11.9	3.8	11.3	13.2	5.0	90.8	5.8	3.9	-0.5	100.0
2007	2.2	29.1	6.3	1.1	5.3	12.3	4.0	11.4	13.2	4.8	89.8	6.4	4.3	-0.5	100.0
2008	2.5	25.0	5.7	0.9	5.0	13.4	4.4	12.5	14.6	5.1	89.1	6.3	5.1	-0.5	100.0
2009	2.8	15.3	6.3	0.4	6.1	15.2	5.4	13.2	16.8	6.3	87.8	6.2	6.6	-0.6	100.0
2010	2.5	19.2	6.4	0.5	5.8	15.1	5.1	13.4	15.4	6.0	89.4	5.1	6.0	-0.5	100.0
2011	2.5	23.4	5.8	-0.1	6.0	14.9	4.9	13.3	14.1	5.6	90.3	4.8	5.3	-0.4	100.0
2012	2.7	17.6	5.9	-0.6	6.8	15.4	5.8	15.0	15.4	6.1	90.1	5.1	5.3	-0.4	100.0
2013	2.3	19.4	5.8	-0.1	6.4	16.9	5.5	14.2	14.2	5.9	90.4	5.1	4.9	-0.4	100.0
2014	2.1	22.2	5.3	-0.4	6.0	17.9	5.3	13.2	13.7	5.6	90.9	4.9	4.6	-0.4	100.0
2015	2.2	17.8	5.8	-0.2	6.6	16.2	5.9	14.7	15.4	5.9	90.3	5.2	4.9	-0.4	100.0
2016	2.0	20.5	5.2	0.2	6.2	18.2	5.7	13.7	14.0	5.4	91.1	4.7	4.6	-0.4	100.0
2017	2.0	17.4	5.1	1.0	6.4	19.5	5.9	13.9	14.3	5.5	90.9	4.8	4.7	-0.4	100.0
2018	2.0	16.4	5.2	1.2	6.6	19.3	6.1	14.2	14.5	5.5	90.8	4.8	4.8	-0.4	100.0
2004 Q1	1.8	26.5	5.6	1.8	5.9	12.3	3.4	12.3	13.9	5.0	88.5	5.4	6.6	-0.5	100.0
Q2	3.5	14.9	6.4	2.1	6.5	14.3	3.7	13.8	16.8	5.7	87.6	8.5	4.5	-0.6	100.0
Q3	2.3	31.8	5.0	1.8	5.3	11.2	3.3	12.1	14.0	4.7	91.4	6.3	2.8	-0.5	100.0
Q4	1.6	27.4	5.4	2.0	5.1	11.4	3.5	12.7	14.2	4.9	88.3	6.3	5.9	-0.5	100.0
2005 Q1	1.8	32.7	4.9	1.3	4.7	10.0	3.3	11.4	13.1	4.8	88.0	6.5	6.0	-0.5	100.0
Q2	2.3	26.4	5.6	1.6	5.3	11.9	3.7	12.8	15.2	5.5	90.4	6.5	3.8	-0.6	100.0
Q3	2.0	37.6	4.5	1.3	4.3	9.9	3.5	10.7	13.1	4.7	91.6	4.6	4.3	-0.4	100.0
Q4	1.2	28.9	5.0	1.5	4.8	11.7	3.9	12.0	15.5	5.2	89.8	7.7	3.0	-0.5	100.0
2006 Q1	2.5	32.0	5.1	1.2	4.7	12.0	3.7	11.8	12.3	5.1	90.5	5.5	4.5	-0.5	100.0
Q2	2.0	26.2	5.5	1.3	5.2	12.9	4.2	12.5	15.2	5.5	90.3	6.4	3.8	-0.6	100.0
Q3	2.2	35.4	5.0	1.3	5.0	11.0	3.5	10.7	12.5	4.7	91.3	5.9	3.3	-0.4	100.0
Q4	1.6	34.0	5.6	1.5	4.4	11.9	3.9	10.5	13.2	4.7	91.1	5.5	3.9	-0.5	100.0
2007 Q1	2.0	31.4	6.0	1.2	4.9	12.2	3.8	12.1	12.8	4.8	91.4	5.2	3.9	-0.5	100.0
Q2	3.0	23.8	6.9	1.2	5.4	12.9	4.2	12.1	14.3	5.0	89.0	7.3	4.3	-0.5	100.0
Q3	2.5	33.3	5.9	1.0	4.9	11.0	3.8	10.7	12.4	4.6	90.0	6.3	4.1	-0.4	100.0
Q4	1.5	27.5	6.3	1.0	5.9	13.1	4.2	10.9	13.5	5.0	88.9	6.8	4.8	-0.5	100.0
2008 Q1	2.4	28.4	5.4	0.9	4.9	13.0	4.5	11.6	13.3	5.1	89.4	6.5	4.6	-0.5	100.0
Q2	2.6	20.7	6.5	0.9	5.3	14.2	4.7	12.6	16.1	5.2	88.8	6.8	4.9	-0.6	100.0
Q3	2.8	26.8	5.6	0.8	4.7	12.8	4.2	12.5	14.2	5.0	89.4	5.9	5.2	-0.5	100.0
Q4	2.3	23.7	5.5	0.9	5.1	13.8	4.4	13.1	14.8	5.2	88.9	6.1	5.5	-0.5	100.0
2009 Q1	2.6	11.8	6.6	0.5	6.4	16.4	5.5	14.3	17.4	6.8	88.2	6.1	6.3	-0.6	100.0
Q2	2.9	17.5	6.4	0.4	6.1	15.4	5.1	12.6	16.5	6.0	88.8	5.8	5.9	-0.6	100.0
Q3	3.3	13.6	6.2	0.4	6.5	15.4	5.6	12.9	17.1	6.5	87.3	6.3	7.0	-0.6	100.0
Q4	2.6	17.6	6.2	0.5	5.6	13.8	5.6	13.1	16.2	5.9	87.0	6.5	7.1	-0.6	100.0
2010 Q1	2.5	16.5	6.5	0.7	5.9	15.0	5.3	13.8	16.0	6.4	88.6	5.5	6.4	-0.5	100.0
Q2	2.8	18.0	6.5	0.5	5.5	15.6	5.2	13.8	15.2	6.2	89.3	5.0	6.2	-0.5	100.0
Q3	2.5	22.0	6.1	0.4	5.8	15.1	5.0	12.6	14.4	5.9	89.9	4.8	5.7	-0.5	100.0
Q4	2.1	19.7	6.5	0.4	6.0	14.5	5.1	13.4	16.0	5.7	89.5	5.1	5.9	-0.5	100.0

Table 2 Continued: Contribution of Gross Value Added to GDP by Kind of Economic Activity at Current Prices

Calendar year	Agriculture	Mining	Manufacturing	Water & Electricity	Construction	Trade, Hotels & Restaurants	Transport & Communication	Finance & Business Service	General Government	Social & Personal Services	Value Added	Taxes on Import	Other Taxes on products	Subsidies	Total GDP
2011 Q1	2.1	24.4	5.7	-0.0	6.0	16.0	5.0	13.3	12.7	5.6	90.7	3.8	6.0	-0.5	100.0
Q2	2.6	23.6	5.5	-0.0	5.7	14.3	4.8	12.9	14.4	5.6	89.3	5.4	5.7	-0.4	100.0
Q3	2.7	24.5	5.9	-0.1	6.1	14.2	4.9	13.4	13.6	5.5	90.7	5.2	4.5	-0.4	100.0
Q4	2.7	21.2	6.0	-0.0	6.1	14.9	4.8	13.6	15.4	5.7	90.4	4.7	5.3	-0.4	100.0
2012 Q1	2.8	17.7	6.1	-0.1	7.0	16.2	5.8	14.6	14.1	6.2	90.4	4.7	5.3	-0.4	100.0
Q2	2.9	19.9	5.9	-1.0	6.7	15.1	5.6	14.7	15.0	6.1	90.8	4.6	5.0	-0.4	100.0
Q3	2.9	16.1	6.1	-0.6	6.8	15.5	5.9	15.4	15.5	6.2	89.8	5.2	5.5	-0.4	100.0
Q4	2.2	16.5	5.7	-0.6	6.6	14.9	5.7	15.3	16.9	6.1	89.3	5.7	5.4	-0.4	100.0
2013 Q1	2.3	16.4	6.1	-0.0	6.9	17.0	5.8	15.1	14.0	6.1	89.7	5.6	5.2	-0.4	100.0
Q2	2.4	24.4	5.5	-0.4	6.1	15.4	5.2	13.5	13.4	5.6	91.2	4.7	4.5	-0.4	100.0
Q3	2.2	19.3	5.9	0.2	6.3	17.2	5.5	14.0	14.0	5.9	90.5	5.0	4.9	-0.4	100.0
Q4	2.3	16.9	5.9	-0.2	6.3	18.2	5.6	14.2	15.3	5.8	90.2	5.3	4.9	-0.4	100.0
2014 Q1	2.1	21.1	5.2	-0.9	6.2	18.5	5.6	13.4	13.7	5.7	90.6	5.1	4.7	-0.4	100.0
Q2	2.1	24.9	5.0	0.3	5.8	17.4	5.1	12.6	12.9	5.4	91.4	4.5	4.4	-0.4	100.0
Q3	2.1	20.2	5.5	-0.1	6.0	18.5	5.4	13.6	14.0	5.7	90.8	4.9	4.7	-0.4	100.0
Q4	2.1	22.5	5.5	-1.0	5.8	17.5	5.3	13.4	14.1	5.6	90.9	4.9	4.6	-0.4	100.0
2015 Q1	2.1	20.8	5.6	-0.8	6.4	16.8	5.5	13.8	14.7	5.8	90.8	5.0	4.6	-0.4	100.0
Q2	2.2	20.5	5.6	-0.0	6.5	15.4	5.6	14.3	14.9	5.7	90.6	5.1	4.7	-0.4	100.0
Q3	2.1	18.6	5.7	-0.0	6.4	15.5	5.9	14.7	15.5	5.8	90.3	5.2	5.0	-0.4	100.0
Q4	2.4	10.8	6.2	0.3	7.0	17.4	6.4	16.2	16.5	6.4	89.6	5.4	5.4	-0.5	100.0
2016 Q1	2.1	19.1	5.4	-0.2	6.4	17.5	5.7	14.1	14.9	5.7	90.6	5.1	4.7	-0.4	100.0
Q2	2.1	20.5	5.1	0.2	6.1	18.8	5.6	13.5	14.0	5.4	91.2	4.7	4.6	-0.4	100.0
Q3	2.0	22.0	5.1	-0.0	6.1	18.2	5.6	13.4	13.7	5.3	91.4	4.5	4.5	-0.4	100.0
Q4	2.0	20.1	5.2	0.9	6.2	18.2	5.8	13.9	13.6	5.4	91.3	4.7	4.5	-0.4	100.0
2017 Q1	2.0	17.8	4.9	0.4	6.3	20.5	5.9	14.0	14.0	5.5	91.2	4.8	4.4	-0.4	100.0
Q2	2.0	17.6	5.1	1.0	6.4	18.9	5.9	13.9	14.6	5.5	91.0	4.9	4.6	-0.4	100.0
Q3	2.0	18.8	5.2	1.2	6.4	17.8	5.9	13.7	14.4	5.4	90.7	4.8	4.9	-0.4	100.0
Q4	2.0	15.3	5.2	1.3	6.5	20.7	5.9	14.0	14.4	5.5	90.9	4.8	4.8	-0.4	100.0
2018 Q1	2.0	15.9	5.0	1.2	6.6	19.0	6.2	14.4	14.7	5.6	90.6	5.0	4.7	-0.4	100.0
Q2	2.0	15.7	5.1	1.3	6.6	20.0	6.0	14.2	14.6	5.5	91.1	4.8	4.5	-0.4	100.0
Q3	2.0	18.1	5.2	1.2	6.6	18.4	6.0	13.8	14.2	5.4	90.8	4.7	4.9	-0.4	100.0
Q4	1.9	15.8	5.3	1.0	6.7	19.8	6.1	14.2	14.5	5.5	90.8	4.7	4.9	-0.4	100.0

Table 3: Value Added by Kind of Economic Activity at Constant 2006 Prices (P million)

Calendar year	Agriculture	Mining	Manufacturing	Water & Electricity	Construction	Trade, Hotels & Restaurants	Transport & Communication	Finance & Business Service	General Government	Social & Personal Services	Value Added	Taxes on Import	Other Taxes on products	Subsidies	Total GDP
2004	1,095.8	16,705.0	2,555.2	886.8	2,478.5	5,321.5	1,735.0	6,273.1	8,081.8	2,176.8	47,309.3	2,882.1	2,212.5	-236.1	52,167.7
2005	1,068.2	18,087.7	2,602.4	762.2	2,448.6	5,521.2	1,978.4	6,361.8	7,993.5	2,582.6	49,406.7	3,202.9	2,192.6	-257.4	54,544.8
2006	1,210.7	19,019.0	3,123.1	785.1	2,838.0	7,032.3	2,250.5	6,675.4	7,818.5	2,938.9	53,691.6	3,428.8	2,276.3	-289.8	59,106.9
2007	1,358.9	18,113.7	3,925.6	746.3	3,497.0	8,104.3	2,597.5	7,425.6	8,256.2	3,179.8	57,205.0	4,261.2	2,859.9	-327.0	63,999.1
2008	1,385.7	18,160.9	3,824.9	795.5	3,524.3	9,560.9	2,862.0	8,293.4	8,276.6	3,663.9	60,348.0	4,434.1	3,566.5	-352.6	67,996.1
2009	1,474.0	10,466.0	4,016.5	753.9	3,958.8	9,929.8	3,285.3	8,414.9	8,510.5	4,076.2	54,885.9	4,004.4	4,278.1	-375.6	62,792.8
2010	1,559.7	12,596.2	4,173.5	844.2	4,101.3	10,852.0	3,496.8	9,379.2	9,150.6	4,329.7	60,483.3	3,679.4	4,367.1	-359.8	68,170.1
2011	1,562.4	11,782.2	4,647.3	555.4	5,047.2	12,348.0	3,708.6	10,098.0	9,723.1	4,689.7	64,161.9	4,028.0	4,460.6	-357.2	72,293.3
2012	1,429.1	11,101.2	4,819.5	402.9	5,774.8	13,188.0	4,111.9	11,018.1	9,993.4	5,191.9	67,030.9	4,331.0	4,521.3	-368.4	75,514.8
2013	1,448.1	13,784.3	5,134.4	674.9	6,010.9	15,298.3	4,422.6	11,973.5	10,592.0	5,607.6	74,946.6	4,886.7	4,642.6	-395.1	84,080.7
2014	1,443.1	13,851.1	5,160.3	298.5	6,234.7	16,933.1	4,854.6	12,291.2	11,079.4	5,843.3	77,989.3	5,145.8	4,844.7	-410.3	87,569.5
2015	1,447.7	11,132.2	5,327.4	319.4	6,481.6	16,267.6	5,075.5	12,843.7	11,442.4	6,055.2	76,392.7	5,174.3	4,940.2	-424.6	86,082.6
2016	1,456.2	10,737.7	5,410.0	623.5	6,755.3	18,453.3	5,408.1	13,268.8	11,714.0	6,266.6	80,093.5	5,153.7	4,978.5	-438.3	89,787.4
2017	1,487.6	9,545.1	5,528.2	872.0	6,993.0	20,106.1	5,661.0	13,806.3	11,895.1	6,441.1	82,335.6	5,339.7	5,167.1	-444.4	92,398.0
2018	1,530.5	10,255.6	5,725.3	1,055.4	7,251.5	20,757.1	6,023.2	14,498.7	12,253.4	6,669.8	86,020.4	5,496.8	5,467.3	-471.5	96,513.0
2004 Q1	224.0	3,333.2	623.7	221.4	663.0	1,352.4	436.4	1,544.3	1,895.8	546.0	10,840.2	621.2	770.7	-58.0	12,174.0
Q2	369.1	3,552.5	620.5	209.3	608.9	1,354.2	396.5	1,477.6	2,054.1	526.6	11,169.3	809.4	434.8	-60.5	12,353.1
Q3	302.9	4,921.1	638.9	219.4	629.8	1,317.7	444.7	1,617.3	2,077.1	549.3	12,718.4	731.9	331.7	-55.7	13,726.4
Q4	199.8	4,898.1	672.0	236.7	576.8	1,297.1	457.4	1,633.8	2,054.6	554.8	12,581.3	719.6	675.3	-62.0	13,914.2
2005 Q1	270.8	3,807.3	618.9	190.4	614.3	1,313.8	465.4	1,550.2	1,878.8	627.5	11,337.2	807.8	753.5	-59.0	12,839.5
Q2	290.4	4,333.9	627.7	186.9	612.0	1,350.1	460.8	1,507.9	1,936.1	630.7	11,936.5	725.8	423.4	-65.8	13,019.9
Q3	324.3	4,923.6	679.7	188.9	611.9	1,386.0	527.1	1,658.4	2,020.4	660.8	12,981.1	652.3	614.1	-62.7	14,184.8
Q4	182.8	5,023.0	676.1	196.1	610.4	1,471.3	525.2	1,645.3	2,158.2	663.7	13,151.9	1,016.9	401.6	-69.9	14,500.6
2006 Q1	342.4	4,585.3	746.6	193.6	677.3	1,733.6	540.2	1,685.7	1,790.2	740.2	13,035.1	791.9	646.9	-68.5	14,405.4
Q2	244.3	4,577.9	734.5	191.5	680.2	1,710.6	553.9	1,643.9	2,024.1	728.5	13,089.3	853.7	503.8	-74.5	14,372.3
Q3	376.6	4,985.1	804.9	196.4	798.4	1,763.6	567.5	1,719.8	1,997.8	745.4	13,955.4	940.8	526.7	-69.8	15,353.1
Q4	247.4	4,870.7	837.1	203.6	682.1	1,824.5	588.9	1,626.1	2,006.4	724.9	13,611.8	842.5	598.9	-77.1	14,976.1
2007 Q1	332.6	4,517.8	931.8	193.1	791.7	1,957.8	602.0	1,923.3	1,966.2	769.2	13,985.4	810.4	614.2	-74.9	15,335.1
Q2	411.0	4,441.3	1,032.6	192.2	851.5	2,026.7	650.5	1,843.8	2,132.9	780.1	14,362.6	1,139.6	669.5	-83.7	16,088.0
Q3	409.1	4,523.4	999.9	183.0	879.4	1,981.0	667.9	1,922.4	2,094.2	823.4	14,483.8	1,151.5	761.8	-79.6	16,317.6
Q4	206.2	4,631.2	961.3	178.0	974.4	2,138.9	677.1	1,736.1	2,062.9	807.0	14,373.1	1,159.7	814.4	-88.8	16,258.4
2008 Q1	302.4	4,700.9	893.7	188.2	907.0	2,303.4	697.1	1,848.4	1,840.6	917.7	14,599.5	1,098.3	783.1	-83.1	16,397.8
Q2	404.1	4,570.7	1,020.1	194.2	874.9	2,375.3	705.7	2,075.4	2,141.6	877.4	15,239.5	1,108.0	808.2	-90.4	17,065.3
Q3	393.3	4,892.7	985.3	199.6	864.7	2,396.9	723.5	2,091.1	2,142.1	922.9	15,612.1	1,112.6	967.8	-84.9	17,607.6
Q4	285.9	3,996.5	925.8	213.5	877.7	2,485.2	735.6	2,278.6	2,152.3	945.8	14,896.9	1,115.3	1,007.4	-94.2	16,925.3
2009 Q1	373.1	2,011.2	1,036.1	171.4	977.2	2,466.2	774.8	2,135.5	2,061.2	1,023.9	13,030.5	931.5	971.4	-89.8	14,843.7
Q2	360.6	2,721.6	1,040.6	185.4	999.8	2,584.3	787.6	2,093.6	2,158.3	1,006.1	13,938.0	975.3	995.4	-97.2	15,811.5
Q3	404.8	2,616.2	943.4	184.9	1,035.2	2,504.3	846.0	2,016.1	2,149.1	1,040.0	13,740.1	1,008.1	1,124.9	-90.3	15,782.8
Q4	335.5	3,117.0	996.4	212.2	946.5	2,375.0	876.9	2,169.7	2,142.0	1,006.2	14,177.3	1,089.5	1,186.2	-98.2	16,354.8
2010 Q1	355.1	3,148.6	995.2	234.5	963.4	2,536.8	831.0	2,252.4	2,218.9	1,083.9	14,619.9	910.0	1,057.4	-83.2	16,504.1
Q2	432.8	2,905.5	1,024.9	202.3	940.2	2,719.6	848.2	2,368.4	2,253.0	1,081.3	14,776.1	874.4	1,084.1	-92.1	16,642.5
Q3	413.8	3,474.0	1,049.3	208.3	1,078.3	2,808.9	906.9	2,303.4	2,327.5	1,099.7	15,670.2	914.2	1,101.1	-87.5	17,598.1
Q4	358.0	3,068.1	1,104.1	199.1	1,119.5	2,786.7	910.7	2,455.0	2,351.2	1,064.8	15,417.2	980.8	1,124.5	-97.1	17,425.4

Table 3: Value Added by Kind of Economic Activity at Constant 2006 Prices (P million)

Calendar year	Agriculture	Mining	Manufacturing	Water & Electricity	Construction	Trade, Hotels & Restaurants	Transport & Communication	Finance & Business Service	General Government	Social & Personal Services	Value Added	Taxes on Import	Other Taxes on products	Subsidies	Total GDP
2011 Q1	350.7	3,021.8	1,123.2	148.6	1,183.9	3,144.7	912.6	2,478.9	2,211.0	1,130.8	15,706.2	713.0	1,163.4	-92.9	17,489.7
Q2	388.1	3,096.8	1,098.5	141.5	1,183.9	2,949.1	904.9	2,465.1	2,400.2	1,120.3	15,748.4	1,141.5	1,178.6	-81.8	17,986.8
Q3	397.2	2,914.4	1,166.5	120.0	1,320.4	3,011.0	944.5	2,479.2	2,377.7	1,198.3	15,929.2	1,127.2	951.7	-90.2	17,917.8
Q4	426.5	2,749.3	1,259.1	145.2	1,359.0	3,243.3	946.6	2,674.8	2,734.1	1,240.4	16,778.2	1,046.3	1,166.8	-92.3	18,899.0
2012 Q1	366.1	2,934.8	1,234.5	167.9	1,422.2	3,196.4	1,014.0	2,647.2	2,514.7	1,243.2	16,741.0	965.2	1,069.7	-90.5	18,685.5
Q2	358.3	2,917.5	1,174.0	83.2	1,438.6	3,241.8	1,025.4	2,688.9	2,391.9	1,281.7	16,601.3	988.0	1,084.0	-90.9	18,582.4
Q3	359.4	2,224.0	1,208.4	92.8	1,452.2	3,370.3	1,038.9	2,811.3	2,363.8	1,323.4	16,244.5	1,114.0	1,174.5	-92.8	18,440.3
Q4	345.3	3,025.0	1,202.5	59.0	1,461.8	3,379.6	1,033.6	2,870.8	2,722.9	1,343.6	17,444.0	1,263.7	1,193.1	-94.2	19,806.6
2013 Q1	347.7	3,081.0	1,226.1	205.8	1,484.7	3,612.4	1,067.5	3,041.1	2,743.3	1,379.3	18,188.9	1,253.0	1,164.8	-98.7	20,508.0
Q2	370.5	3,816.9	1,293.3	189.7	1,503.8	3,632.4	1,083.6	2,946.8	2,557.4	1,385.7	18,780.1	1,137.4	1,108.9	-94.6	20,931.9
Q3	371.9	3,258.7	1,319.6	231.6	1,506.0	3,973.0	1,131.5	2,952.6	2,517.5	1,404.0	18,666.5	1,180.2	1,169.9	-99.4	20,917.2
Q4	358.0	3,627.7	1,295.4	47.7	1,516.5	4,080.4	1,140.0	3,033.0	2,773.8	1,438.6	19,311.0	1,316.1	1,199.0	-102.4	21,723.7
2014 Q1	348.9	3,226.5	1,205.8	78.8	1,521.8	4,140.0	1,167.2	3,011.5	2,668.8	1,434.7	18,804.0	1,286.6	1,203.0	-104.0	21,189.6
Q2	370.6	3,561.6	1,271.4	106.2	1,558.3	4,153.7	1,206.6	3,021.3	2,853.2	1,446.8	19,549.6	1,238.1	1,201.1	-101.6	21,887.2
Q3	360.1	3,442.9	1,322.4	60.3	1,573.7	4,328.9	1,246.2	3,119.2	2,842.8	1,473.2	19,769.9	1,286.9	1,225.4	-103.7	22,178.5
Q4	363.4	3,620.2	1,360.7	53.2	1,580.9	4,310.5	1,234.6	3,139.1	2,714.6	1,488.6	19,865.7	1,334.2	1,215.2	-101.0	22,314.2
2015 Q1	353.6	3,290.4	1,285.9	93.4	1,596.4	4,077.0	1,215.4	3,110.3	2,863.1	1,499.7	19,385.3	1,299.4	1,196.4	-105.4	21,775.6
Q2	374.8	3,273.0	1,346.2	48.3	1,619.8	3,966.1	1,250.2	3,151.5	2,867.2	1,506.7	19,403.9	1,303.2	1,221.0	-105.9	21,822.1
Q3	358.4	2,048.1	1,350.0	73.8	1,627.5	4,065.8									

Table 4: Percentage Change in Gross Value Added by Kind of Economic Activity at constant 2006 Prices

Calendar year	Agriculture	Mining	Manufacturing	Water & Electricity	Construction	Trade, Hotels & Restaurants	Transport & Communication	Finance & Business Service	General Government	Social & Personal Services	Value Added	Taxes on Import	Other Taxes on products	Subsidies	Total GDP
2005	-2.5	8.3	1.8	-14.1	-1.2	3.8	14.0	1.4	-1.1	18.6	4.4	11.1	-0.9	9.0	4.6
2006	13.3	5.1	20.0	3.0	15.9	27.4	13.8	4.9	-2.2	13.8	8.7	7.1	3.8	12.6	8.4
2007	12.2	-4.8	25.7	-4.9	23.2	15.2	15.4	11.2	5.6	8.2	6.5	24.3	25.6	12.8	8.3
2008	2.0	0.3	-2.6	6.6	0.8	18.0	10.2	11.7	0.2	15.2	5.5	4.1	24.7	7.8	6.2
2009	6.4	-42.4	5.0	-5.2	12.3	3.9	14.8	1.5	2.8	11.3	-9.1	-9.7	20.0	6.5	-7.7
2010	5.8	20.4	3.9	12.0	3.6	9.3	6.4	11.5	7.5	6.2	10.2	-8.1	2.1	-4.2	8.6
2011	0.2	-6.5	11.4	-34.2	23.1	13.8	6.1	7.7	6.3	8.3	6.1	9.5	2.1	-0.7	6.0
2012	-8.5	-5.8	3.7	-27.5	14.4	6.8	10.9	9.1	2.8	10.7	4.5	7.5	1.4	3.1	4.5
2013	1.3	24.2	6.5	67.5	4.1	16.0	7.6	8.7	6.0	8.0	11.8	12.8	2.7	7.3	11.3
2014	-0.4	0.5	0.5	-55.8	3.7	10.7	9.8	2.7	4.6	4.2	4.1	5.3	4.4	3.8	4.1
2015	0.3	-19.6	3.2	7.0	4.0	-3.9	4.5	4.5	3.3	3.6	-2.0	0.6	2.0	3.5	-1.7
2016	0.6	-3.5	1.6	95.2	4.2	13.4	6.6	3.3	2.4	3.5	4.8	-0.4	0.8	3.2	4.3
2017	2.2	-11.1	2.2	39.9	3.5	9.0	4.7	4.1	1.5	2.8	2.8	3.6	3.8	1.4	2.9
2018	2.9	7.4	3.6	21.0	3.7	3.2	6.4	5.0	3.0	3.6	4.5	2.9	5.8	6.1	4.5
2005 Q1	20.9	14.2	-0.8	-14.0	-7.3	-2.9	6.6	0.4	-0.9	14.9	4.6	30.0	-2.2	1.7	5.5
Q2	-21.3	22.0	1.2	-10.7	0.5	-0.3	16.2	2.1	-5.7	19.8	6.9	-10.3	-2.6	8.9	5.4
Q3	7.1	0.1	6.4	-13.9	-2.8	5.2	18.5	2.5	-2.7	20.3	2.1	-10.9	85.1	12.6	3.3
Q4	-8.5	2.5	0.6	-17.2	5.8	13.4	14.8	0.7	5.0	19.6	4.5	41.3	-40.5	12.7	4.2
2006 Q1	26.5	20.4	20.6	1.7	10.3	32.0	16.1	8.7	-4.7	18.0	15.0	-2.0	-14.2	16.0	12.2
Q2	-15.9	5.6	17.0	2.5	11.1	26.7	20.2	9.0	4.5	15.5	9.7	17.6	19.0	13.1	10.4
Q3	16.1	1.2	18.4	4.0	30.5	27.2	7.7	3.7	-1.1	12.8	7.5	44.2	-14.2	11.4	8.2
Q4	35.3	-3.0	23.8	3.9	11.7	24.0	12.1	-1.2	-7.0	9.2	3.5	-17.1	49.1	10.3	3.3
2007 Q1	-2.9	-1.5	24.8	-0.2	16.9	12.9	11.4	14.1	9.8	3.9	7.3	2.3	-5.0	9.4	6.5
Q2	68.3	-3.0	40.6	0.4	25.2	18.5	17.4	12.2	5.4	7.1	9.7	33.5	32.9	12.4	11.9
Q3	8.6	-9.3	24.2	-6.8	10.1	12.3	17.7	11.8	4.8	10.5	3.8	22.4	44.6	14.1	6.3
Q4	-16.7	-4.9	14.8	-12.6	42.9	17.2	15.0	6.8	2.8	11.3	5.6	37.6	36.0	15.2	8.6
2008 Q1	-9.1	4.1	-4.1	-2.5	14.6	17.7	15.8	-3.9	-6.4	19.3	4.4	35.5	27.5	10.9	6.9
Q2	-1.7	2.9	-1.2	1.1	2.7	17.2	8.5	12.6	0.4	12.5	6.1	-2.8	20.7	8.0	6.1
Q3	-3.9	8.2	-1.5	9.1	-1.7	21.0	8.3	8.8	2.3	12.1	7.8	-3.4	27.0	6.6	7.9
Q4	38.7	-13.7	-3.7	19.9	-9.9	16.2	8.6	31.2	4.3	17.2	3.6	-3.8	23.7	6.2	4.1
2009 Q1	23.4	-57.2	15.9	-9.0	7.7	7.1	11.1	15.5	12.0	11.6	-10.7	-15.2	24.1	8.1	-9.5
Q2	-10.8	-40.5	2.0	-4.5	14.3	8.8	11.6	0.9	0.8	14.7	-8.5	-12.0	23.2	7.6	-7.3
Q3	2.9	-46.5	-4.3	-7.4	19.7	4.5	16.9	-3.6	0.3	12.7	-12.0	-9.4	16.2	6.4	-10.4
Q4	17.4	-22.0	7.6	-0.6	7.8	-4.4	19.2	-4.8	-0.5	6.4	-4.8	-2.3	17.8	4.2	-3.4
2010 Q1	-4.8	56.6	-3.9	36.9	-1.4	2.9	7.3	5.5	7.7	5.9	12.2	-2.3	8.9	-7.4	11.2
Q2	20.0	6.8	-1.5	9.1	-6.0	5.2	7.7	13.1	4.4	7.5	6.0	-10.3	8.9	-5.3	5.3
Q3	2.2	32.8	11.2	12.7	4.2	12.2	7.2	14.3	8.3	5.7	14.0	-9.3	-2.1	-3.2	11.5
Q4	6.7	-1.6	10.8	-6.2	18.3	17.3	3.9	13.2	9.8	5.8	8.7	-10.0	-5.2	-1.1	6.5
2011 Q1	-1.2	-4.0	12.9	-36.6	22.9	24.0	9.8	10.1	-0.4	4.3	7.4	-21.7	10.0	11.6	6.0
Q2	-10.3	6.6	7.2	-30.0	25.9	8.4	6.7	4.1	6.5	3.6	6.6	30.6	8.7	-11.2	8.1
Q3	-4.0	-16.1	11.2	-42.4	22.5	7.2	4.1	7.6	2.2	9.0	1.7	23.3	-13.6	3.2	1.8
Q4	19.1	-10.4	14.0	-27.1	21.4	16.4	3.9	9.0	16.3	16.5	8.8	6.7	3.8	-4.9	8.5
2012 Q1	4.4	-2.9	9.9	12.9	20.1	1.6	11.1	6.8	13.7	9.9	6.6	35.4	-8.1	-2.6	6.8
Q2	-7.7	-5.8	6.9	-41.2	21.5	9.9	13.3	9.1	-0.3	14.4	5.4	-13.4	-8.0	11.1	3.3
Q3	-9.5	-23.7	3.6	-22.7	10.0	11.9	10.0	13.4	-0.6	10.4	2.0	-1.2	23.4	2.8	2.9
Q4	-19.0	10.0	-4.5	-59.3	7.6	4.2	9.2	7.3	-0.4	8.3	4.0	20.8	2.2	2.1	4.8

Table 4 Continued: Percentage Change in Gross Value Added by Kind of Economic Activity at constant 2006 Prices

Calendar year	Agriculture	Mining	Manufacturing	Water & Electricity	Construction	Trade, Hotels & Restaurants	Transport & Communication	Finance & Business Service	General Government	Social & Personal Services	Value Added	Taxes on Import	Other Taxes on products	Subsidies	Total GDP
2013 Q1	-5.0	5.0	-0.7	22.6	4.4	13.0	5.3	14.9	9.1	10.9	8.6	29.8	8.9	9.0	9.8
Q2	3.4	30.8	10.2	128.0	4.5	12.1	5.7	9.6	6.9	8.1	13.1	15.1	2.3	4.0	12.6
Q3	3.5	46.5	9.2	149.6	3.7	17.9	8.9	5.0	6.5	6.1	14.9	5.9	-0.4	7.2	13.4
Q4	3.7	19.9	7.7	-19.2	3.7	20.7	10.3	5.7	1.9	7.1	10.7	4.1	0.5	8.7	9.7
2014 Q1	0.3	4.7	-1.7	-61.7	2.5	14.6	9.3	-1.0	-2.7	4.0	3.4	2.7	3.3	5.4	3.3
Q2	0.0	-6.7	-1.7	-44.0	3.6	14.3	11.3	2.5	11.6	4.4	4.1	8.8	8.3	7.4	4.6
Q3	-3.2	5.7	0.2	-74.0	4.5	9.0	10.1	5.6	12.9	4.9	5.9	9.0	4.7	4.3	6.0
Q4	1.5	-0.2	5.0	11.5	4.2	5.6	8.3	3.5	-2.1	3.5	2.9	1.4	1.3	-1.4	2.7
2015 Q1	1.3	2.0	6.6	18.6	4.9	-1.5	4.1	3.3	7.3	4.5	3.1	1.0	-0.6	1.3	2.8
Q2	1.1	-8.1	5.9	-54.5	3.9	-4.5	3.6	4.3	0.5	4.1	-0.7	5.3	1.7	4.3	-0.3
Q3	-0.5	-40.5	2.1	22.4	3.4	-6.1	5.0	4.3	2.1	2.9	-6.4	2.1	3.0	3.6	-5.4
Q4	-0.7	-30.4	-1.1	95.4	3.6	-3.5	5.4	6.1	3.5	3.0	-3.8	-5.7	3.7	4.9	-3.6
2016 Q1	-1.8	-5.5	-0.4	38.8	3.4	5.5	7.1	5.1	1.6	3.5	2.4	1.1	1.5	1.8	2.3
Q2	-1.4	-13.6	1.1	235.1	4.6	20.2	5.5	3.1	2.5	3.5	4.4	-1.9	2.8	2.8	3.9
Q3	4.0	18.6	2.6	18.9	4.2	16.3	6.2	2.6	2.2	4.1	7.9	-2.6	1.2	3.6	6.9
Q4	1.6	-5.9	2.8	135.1	4.7	11.9	7.4	2.6	3.2	2.9	4.8	1.9	-2.3	4.8	4.3
2017 Q1	2.9	-28.9	0.4	2.5	4.0	18.2	4.4	4.4	0.8	2.1	1.1	-0.6	-1.5	3.3	0.9
Q2	1.1	-13.4	0.3	58.8	3.3	1.2	6.0	4.5	0.9	2.8	0.7	4.5	0.1	1.9	0.8
Q3	2.0	3.3	3.6	145.6	3.5	0.5	4.5	3.7	1.4	2.7	3.1	5.5	7.2	-0.1	3.5
Q4	2.6	0.2	4.3	9.1	3.3	17.0	3.8	3.7	3.0	3.5	6.3	5.2	9.1	0.5	6.4
2018 Q1	3.1	12.1	4.6	92.8	3.5	-2.0	6.5	4.9	2.4	3.6	4.0	7.2	10.4	2.8	4.5
Q2	3.0	7.4	3.7	2.9	4.1	9.0	6.0	5.2	2.7	3.3	5.6	2.3	1.6	5.3	5.2
Q3	3.1	-2.7	2.5	24.6	3.9	6.9	5.9	5.1	3.2	3.7	4.1	1.0	5.2	7.8	4.0
Q4	2.4	13.9	3.6	-0.2	3.3	-0.2	7.1	4.9	3.8	3.7	4.2	1.4	6.3	8.3	4.1

Table 5: Gross Domestic Product by Type of Expenditure at Current Prices (P million)

Calendar Year	Government Final Consumption			Non-Profit Institutions	Household Final Consumption			Gross Fixed Capital Formation					Change in Inventories				Gross Domestic Expenditure	Exports			Imports			Errors & Omissions	Total GDP
	Central Govt	Local Govt	Total		Household Consumption (Mkt)	Household Consumption (Non-Mkt)	Total	Construction	Machinery & Equipment	Transport Equipment	Mineral Prospecting	Total	Livestock	Minerals	Others	Total		Goods	Services	Total	Goods	Services	Total		
2004	7,311.3	1,319.8	8,631.1	796.4	13,795.9	2,132.5	16,724.8	6,937.7	3,531.7	1,019.8	214.4	11,703.7	87.8	511.2	930.2	1,529.3	38,588.8	17,344.6	3,511.3	20,855.9	13,475.6	3,920.8	17,396.4	-11.7	42,036.6
2005	8,361.6	1,484.7	9,846.3	1,013.0	16,096.4	2,230.5	19,340.0	8,035.7	3,624.8	950.4	249.7	12,860.5	74.1	15.5	829.2	918.9	42,965.6	22,708.3	4,151.5	26,859.8	13,729.2	4,329.3	18,058.5	-1,014.7	50,752.2
2006	8,502.4	1,568.1	10,070.5	1,217.0	19,222.9	2,452.8	22,892.7	9,930.8	4,095.6	1,159.8	300.5	15,486.6	160.7	-1,164.1	828.2	-175.2	48,274.7	26,386.1	4,499.9	30,886.0	15,283.9	4,859.8	20,143.7	89.9	59,106.9
2007	9,989.2	1,826.2	11,815.4	1,335.0	22,220.5	3,066.7	26,622.2	11,421.2	5,515.0	1,768.0	357.2	19,061.5	217.9	41.6	1,357.0	1,616.4	59,115.5	31,692.0	4,917.0	36,609.0	21,228.0	6,028.3	27,256.3	-1,315.5	67,152.7
2008	12,936.1	2,270.6	15,206.6	1,147.1	27,967.0	3,815.0	32,929.1	12,052.9	8,122.2	2,430.4	246.1	22,851.6	184.0	2,081.1	1,922.6	4,187.7	75,175.1	32,757.0	1,371.0	34,128.0	35,330.0	2,809.0	38,139.0	3,556.8	74,720.9
2009	12,971.2	2,521.7	15,492.9	1,217.0	32,077.5	3,929.1	37,223.5	14,587.8	8,077.9	2,665.8	313.9	25,645.5	191.8	547.0	2,214.8	2,953.6	81,315.5	23,866.0	1,699.6	25,565.6	33,346.0	4,770.0	38,116.0	4,697.3	73,462.4
2010	14,363.6	2,798.3	17,162.0	1,335.0	37,195.1	4,161.9	42,692.1	16,852.9	9,484.8	2,510.7	353.2	29,201.5	253.8	4,409.0	2,109.3	6,772.1	95,827.6	31,237.0	6,668.0	37,905.0	38,035.0	6,497.0	44,532.0	-2,333.2	86,867.4
2011	16,592.9	2,814.4	19,407.3	1,464.6	42,755.9	4,408.6	48,629.1	19,364.4	10,907.5	2,962.6	406.1	33,640.6	1.3	4,853.5	2,001.1	6,855.8	108,532.9	44,043.0	8,395.0	52,438.0	48,821.0	7,443.0	56,264.0	273.0	104,979.9
2012	18,342.9	2,852.7	21,195.6	1,995.2	50,789.5	4,315.5	57,100.3	23,308.9	12,601.9	3,437.1	455.5	39,803.5	187.6	221.6	2,460.8	2,869.9	120,969.3	45,886.0	8,226.0	54,112.0	61,074.0	6,391.0	67,465.0	2,254.1	109,870.4
2013	20,005.4	3,209.3	23,214.7	2,154.9	57,512.1	5,442.5	65,109.5	26,629.9	12,316.1	2,408.1	571.0	41,925.1	-261.6	-4,752.3	-103.3	-5117.2	125,132.2	66,563.7	10,437.0	77,000.7	68,902.2	7,483.1	76,385.3	-589.2	125,158.3
2014	25,343.8	3,733.9	29,077.7	2,308.3	60,279.5	5,887.0	68,474.7	28,775.8	12,346.4	2,697.1	613.3	44,432.7	165.0	-417.1	-3,047.0	-3299.1	138,686.0	76,419.9	12,137.0	88,556.9	71,745.4	6,953.2	78,698.7	-2,675.6	145,868.6
2015	26,034.1	4,022.6	30,056.7	2,460.1	67,187.3	6,337.2	75,984.5	31,329.6	15,132.9	2,532.9	648.0	49,643.4	1485.7	2,825.6	-6,332.5	-2021.2	153,663.5	63,673.5	13,790.2	77,463.6	72,787.7	6,805.6	79,593.3	-5,467.6	146,066.2
2016	27,313.3	3,719.5	31,032.9	2,662.5	71,124.1	6,936.8	80,723.4	34,784.0	15,116.2	2,397.1	688.5	52,985.8	69.4	-2,037.2	-2,287.4	-4255.2	160,486.9	69,497.6	15,369.3	84,867.0	66,125.9	7,502.9	73,628.8	-1,161.4	170,563.6
2017	29,328.3	3,861.8	33,190.1	2,864.8	78,841.4	7,077.9	88,784.1	37,777.4	11,945.4	1,988.2	722.4	52,433.4	1312.5	-117.3	-2,762.0	-1566.7	172,840.9	61,405.5	10,586.7	71,992.2	51,784.0	9,269.3	61,053.3	-3,677.8	180,102.1
2018	31,193.2	4,229.6	35,422.7	3,036.7	83,606.2	7,368.7	94,011.6	41,366.3	13,022.0	2,169.9	761.7	57,319.9	-1279.2	468.1	-709.0	-1520.1	185,234.2	65,061.9	9,661.0	74,723.0	61,650.8	9,154.9	70,805.6	717.0	189,868.5
2004 Q1	1,845.5	354.9	2,200.4	181.5	3,317.9	466.8	3,966.2	1,640.7	785.6	286.9	51.0	2,764.2	21.3	104.6	359.0	484.8	9,415.6	4,182.0	1,046.3	5,228.3	2,846.0	1,095.1	3,941.1	-449.5	10,253.3
Q2	1,753.4	316.7	2,070.1	192.8	3,394.3	433.5	4,020.6	1,686.8	957.3	243.1	52.4	2,939.6	39.0	-298.7	349.9	90.2	9,120.5	3,625.7	595.8	4,221.5	3,411.2	886.8	4,298.0	29.2	9,073.2
Q3	1,883.2	314.1	2,197.3	204.7	3,369.4	647.1	4,221.2	1,780.3	866.1	259.1	55.0	2,960.5	16.9	406.6	116.8	540.3	9,919.4	4,946.5	677.0	5,623.5	3,481.0	1,051.5	4,532.5	466.4	11,476.8
Q4	1,829.1	334.2	2,163.3	217.4	3,714.3	585.0	4,516.7	1,829.9	922.6	230.8	56.0	3,039.3	10.7	298.7	104.6	414.0	10,133.3	4,590.4	1,192.2	5,782.6	3,737.4	887.3	4,624.7	-57.8	11,233.4
2005 Q1	2,298.6	406.0	2,704.6	230.9	3,992.9	458.6	4,682.4	1,879.0	899.1	357.2	53.4	3,188.8	12.2	-620.1	218.5	-389.3	10,186.5	5,538.7	1,168.1	6,706.8	3,363.9	1,239.0	4,602.9	52.7	12,343.1
Q2	1,802.4	318.2	2,120.6	245.2	3,694.1	571.8	4,511.1	1,931.6	830.2	185.4	50.9	2,998.2	15.7	-129.7	184.2	70.3	9,700.1	4,871.5	536.7	5,408.2	3,251.0	994.0	4,245.0	263.4	11,126.7
Q3	1,973.4	353.2	2,326.6	260.4	4,085.9	603.9	4,950.1	2,083.3	935.0	207.4	68.0	3,293.7	30.7	597.7	189.2	817.6	11,388.0	7,020.6	961.4	7,982.0	3,289.8	1,034.3	4,324.2	-858.2	14,187.7
Q4	2,287.2	407.3	2,694.5	276.5	4,323.5	596.3	5,196.4	2,141.7	960.5	200.3	77.3	3,379.8	15.5	167.6	237.2	420.3	11,691.0	5,277.5	1,485.3	6,762.8	3,824.5	1,062.0	4,886.4	-472.7	13,094.7
2006 Q1	1,970.0	374.1	2,344.2	293.7	4,531.2	412.8	5,237.6	2,394.5	828.8	270.9	66.6	3,560.8	31.6	-1,284.0	199.0	-1,053.4	10,089.2	6,028.7	1,269.1	7,297.8	3,158.9	1,298.3	4,457.2	1,072.2	14,002.0
Q2	1,963.6	375.1	2,338.8	299.0	4,323.7	703.5	5,326.1	2,461.6	964.0	262.0	65.6	3,753.2	25.8	7,957.6	185.3	8,168.8	19,586.9	6,090.1	649.3	6,739.4	3,925.3	1,080.4	5,005.8	-8,110.6	13,209.9
Q3	2,202.5	402.2	2,604.8	316.9	5,246.7	630.4	6,194.0	2,569.3	1,106.0	293.0	84.6	4,052.9	59.3	-11,495.1	248.6	-11,187.2	1,664.5	6,214.5	924.3	7,138.8	4,023.7	1,345.3	5,369.0	12,781.5	16,215.7
Q4	2,366.2	416.6	2,782.9	307.4	5,121.3	706.2	6,134.9	2,505.4	1,196.8	333.9	83.7	4,119.7	44.0	3,657.4	195.3	3,896.7	16,934.1	8,052.8	1,657.2	9,710.0	4,175.9	1,135.8	5,311.7	-5,653.2	15,679.3
2007 Q1	2,494.9	435.4	2,930.4	304.3	4,680.0	733.3	5,717.7	2,661.9	1,074.2	380.3	82.5	4,198.8	49.9	-262.6	185.3	-27.4	12,819.5	8,956.0	1,397.0	10,353.0	4,192.0	1,697.0	5,889.0	-1,549.6	15,733.9
Q2	2,367.2	437.2	2,804.4	312.7	5,186.7	728.0	6,227.4	2,769.6	1,285.8	488.6	84.9	4,628.8	69.9	-147.2	189.6	112.3	13,773.0	7,693.0	649.0	8,342.0	5,160.0	1,197.0	6,357.0	16.4	15,774.4
Q3	2,549.9	475.9	3,025.9	359.6	5,997.3	731.7	7,088.6	2,939.9	1,644.1	492.0	95.6	5,171.7	62.1	1,650.7	478.3	2,191.0	17,477.2	8,923.0	1,369.0	10,292.0	5,395.0	1,549.3	6,944.3	-2,310.6	18,514.2
Q4	2,577.2	477.6	3,054.7	358.5	6,356.5	873.5	7,588.6	3,049.8	1,510.9	407.1	94.3	5,062.1	36.0	-1,199.3	503.8	-659.5	15,045.9	6,120.0	1,502.0	7,622.0	6,481.0	1,585.0	8,066.0	2,528.3	17,130.1
2008 Q1	3,253.2	546.6	3,799.7	334.9	5,704.2	803.7	6,842.8	2,831.3	1,990.9	526.2	68.1	5,416.4	36.0	125.4	559.5	720.9	16,779.8	9,018.0	367.0	9,385.0	7,505.0	650.0	8,155.0	-525.2	17,484.6
Q2	3,087.6	558.5	3,646.0	379.8	6,463.1	966.4	7,809.3	2,913.9	1,956.4	621.5	56.1	5,547.9	43.0	-130.2	521.0	433.9	17,437.1	8,259.0	357.0	8,616.0	8,835.0	676.0	9,511.0	744.8	17,286.9
Q3	3,088.1	559.3	3,647.4	209.7	8,073.8	975.2	9,258.7	3,174.0	1,884.8	590.7	64.4	5,713.9	49.3	-427.0	402.7	25.0	18,645.0	10,776.0	265.0	11,041.0	9,677.0	651.0	10,328.0	790.9	20,148.9
Q4	3,507.2	606.2	4,113.5	222.7	7,725.8	1,069.8	9,018.3	3,133.7	2,290.0	692.0	57.6	6,173.4	55.7	2,513.0	439.3	3,008.0	22,313.1	4,704.0	382.0	5,086.0	9,313.0	832.0	10,145.0	2,546.3	19,800.4
2009 Q1	3,235.4	620.2	3,855.6	307.8	7,103.8	904.6	8,316.1	3,311.1	1,865.6	802.8	62.4	6,041.9	51.4	885.3	679.4	1,616.1	19,829.7	3,886.0	317.6	4,203.6	7,736.0	1,096.0	8,832.0	1,394.7	16,596.0
Q2	3,443.0	653.7	4,096.7	296.0	6,924.3	1,162.2	8,382.4	3,723.9	2,106.8	568.1	79.2	6,478.1	46.4	-350.2	444.6	140.8	19,098.1	6,590.0	633.0	7,223.0	8,001.0	1,295.0	9,296.0	1,706.5	18,731.5
Q3	3,033.0	608.5	3,641.5	310.4	9,134.0	933.3	10,377.7	4,025.5	1,930.9	495.8	90.9	6,543.1	44.0	72.3	409.0	525.3	21,087.6	6,825.0	359.0	7,184.0	8,422.0	1,050.0	9,472.0	-327.7	18,471.9
Q4	3,259.8	639.2	3,899.1	302.8	8,915.5	929.0	10,147.3	3,527.2	2,174.6	799.2	81.4	6,582.4	50.1	-60.5	681.7	671.4	21,300.1	6,565.0	390.0	6,955.0	9,187.0	1,329.0	10,516.0	1,923.9	19,663.0
2010 Q1	3,448.5	671.6	4,120.1	319.3	7,830.2	1,044.0	9,193.5	3,718.7	2,280.9	677.0	70.2	6,746.7	57												

Table 5 Continued: Gross Domestic Product by Type of Expenditure at Current Prices (P million)

Calendar year	Government Final Consumption			Non-Profit Institutions	Household Final Consumption			Gross Fixed Capital Formation				Change in Inventories				Gross Domestic Expenditure	Exports			Imports			Errors & Omissions	Total GDP	
	Central Govt	Local Govt	Total		Household Consumption (Mkt)	Household Consumption (Non-Mkt)	Total	Construction	Machinery & Equipment	Transport Equipment	Mineral Prospecting	Total	Livestock	Minerals	Others		Total	Goods	Services	Total	Goods	Services			Total
2011 Q1	4,064.0	711.2	4,775.2	344.2	9,412.9	1,004.1	10,761.2	4,361.0	2,239.9	763.6	105.4	7,469.9	0.3	-342.4	496.5	154.5	23,160.8	10,018.0	2,032.0	12,050.0	11,976.0	2,243.0	14,219.0	2,871.1	23,862.8
Q2	4,281.1	711.6	4,992.6	348.2	10,466.3	1,045.3	11,859.9	4,824.2	2,918.0	707.2	94.1	8,543.6	0.3	-7,809.9	484.8	-7,324.9	18,071.2	12,800.0	1,918.0	14,718.0	11,511.0	1,846.0	13,357.0	6,492.2	25,924.5
Q3	4,200.5	682.4	4,882.8	366.5	11,252.9	1,164.4	12,783.8	4,929.0	3,018.6	743.7	106.6	8,798.0	0.3	7,016.9	508.6	7,525.8	33,990.5	12,418.0	1,961.0	14,379.0	12,716.0	1,801.0	14,517.0	-6,895.2	26,957.3
Q4	4,047.4	709.3	4,756.6	405.6	11,623.8	1,194.8	13,224.2	5,250.1	2,731.0	748.1	100.0	8,829.2	0.4	5,988.8	511.2	6,500.4	33,310.4	8,807.0	2,484.0	11,291.0	12,618.0	1,553.0	14,171.0	-2,195.1	28,235.3
2012 Q1	4,371.3	707.4	5,078.8	479.9	9,325.5	1,116.2	10,921.7	5,712.3	3,053.4	836.4	118.8	9,720.9	45.4	712.8	637.8	1,396.0	27,117.4	9,783.0	1,975.0	11,758.0	12,823.0	1,521.0	14,344.0	1,512.7	26,044.1
Q2	4,931.2	711.3	5,642.5	489.3	13,148.6	1,048.1	14,686.0	5,372.4	3,251.4	961.2	93.9	9,678.8	50.2	-122.6	578.1	505.7	30,513.1	10,414.0	2,014.0	12,428.0	12,903.0	1,648.0	14,551.0	-664.0	27,726.0
Q3	4,470.0	710.5	5,180.5	519.9	13,589.5	1,002.9	15,112.3	5,906.6	3,146.8	832.8	119.7	10,005.9	60.9	-1,110.1	641.4	-407.8	29,890.9	13,556.0	1,961.0	15,517.0	19,499.0	1,925.0	21,424.0	3,557.9	27,541.9
Q4	4,570.3	723.5	5,293.8	506.1	14,725.9	1,148.3	16,380.3	6,317.7	3,150.3	806.8	123.1	10,397.8	31.1	741.5	603.4	1,376.0	33,447.9	12,133.0	2,276.0	14,409.0	15,849.0	1,297.0	17,146.0	-2,152.5	28,558.5
2013 Q1	4,838.4	750.8	5,589.2	518.3	13,874.7	1,218.7	15,611.7	6,497.2	2,509.3	586.0	140.5	9,733.1	-139.3	-4,500.8	718.1	-3,922.0	27,011.9	16,867.8	2,151.0	19,018.8	15,728.2	1,834.2	17,562.4	-43.5	28,424.8
Q2	4,954.5	775.4	5,729.9	535.7	13,617.2	1,541.2	15,694.0	6,637.0	3,293.9	716.9	142.1	10,789.9	-69.1	-304.8	1,374.8	1,000.9	33,214.7	14,739.4	2,675.0	17,414.4	17,067.0	2,010.0	19,077.0	908.9	32,461.0
Q3	5,071.0	807.3	5,878.3	545.5	14,503.8	1,330.7	16,379.9	6,650.2	3,176.6	480.2	143.5	10,450.4	-30.3	-197.2	-2,420.8	-2,648.3	30,060.3	19,550.4	2,792.0	22,342.4	17,130.8	1,996.3	19,127.2	-1,610.1	31,665.4
Q4	5,141.5	875.8	6,017.3	555.5	15,516.5	1,351.9	17,423.9	6,845.6	3,336.2	625.0	144.9	10,951.8	-22.9	250.5	224.6	452.2	34,845.2	15,406.1	2,819.0	18,225.1	18,976.1	1,642.6	20,618.8	155.5	32,607.1
2014 Q1	6,001.4	891.3	6,892.7	565.3	14,172.2	1,363.5	16,101.1	6,994.6	3,189.6	626.6	149.2	10,960.1	-46.8	-120.9	70.0	-97.6	33,856.2	17,273.4	2,946.8	20,220.2	17,896.3	1,741.0	19,637.3	75.1	34,514.3
Q2	6,406.4	929.8	7,336.2	573.2	14,365.1	1,488.1	16,426.4	7,220.8	2,977.9	720.1	151.8	11,070.7	-21.2	-295.5	-498.4	-815.1	34,018.2	21,037.3	2,910.9	23,948.2	18,401.7	1,628.3	20,030.0	-210.8	37,725.7
Q3	6,495.9	956.7	7,452.5	580.8	15,515.3	1,524.7	17,620.8	7,250.6	2,392.8	686.7	153.6	10,483.7	54.1	189.0	-1,609.3	-1,366.2	34,190.7	19,790.8	3,098.8	22,889.7	17,775.5	1,631.6	19,407.0	-1,517.6	36,155.8
Q4	6,440.1	956.2	7,396.3	589.0	16,226.9	1,510.6	18,326.5	7,309.8	3,786.1	663.7	158.6	11,918.2	179.0	-189.8	-1,009.3	-1,020.1	36,620.9	18,318.3	3,180.5	21,498.7	17,672.0	1,952.3	19,624.3	-1,022.3	37,472.9
2015 Q1	6,334.5	981.8	7,316.3	596.6	15,728.1	1,540.9	17,865.5	7,547.4	3,267.7	578.3	163.6	11,557.0	353.4	89.3	-1,392.8	-950.1	35,788.8	19,524.0	3,014.1	22,538.1	18,169.3	1,748.2	19,917.5	-1,845.8	36,563.6
Q2	6,526.8	1,022.8	7,549.6	606.9	16,650.3	1,580.6	18,837.8	7,847.5	3,884.8	638.1	154.9	12,525.2	430.4	207.8	-2,400.0	-1,761.8	37,150.8	19,828.3	3,564.6	23,393.0	19,702.0	1,635.5	21,337.5	-1,862.4	37,343.9
Q3	6,498.8	1,021.2	7,520.0	620.8	16,909.9	1,586.3	19,117.0	7,889.4	4,155.2	637.6	161.3	12,843.5	409.9	782.1	460.3	1,652.3	41,132.8	11,850.5	3,660.1	15,510.7	17,930.4	1,487.1	19,417.6	69.9	37,295.7
Q4	6,674.0	996.8	7,670.8	635.8	17,899.1	1,629.5	20,164.3	8,045.3	3,825.2	679.0	168.2	12,717.6	291.9	1,746.4	-3,000.0	-961.7	39,591.1	12,470.5	3,551.3	16,021.9	16,986.0	1,934.7	18,920.7	-1,829.3	34,862.9
2016 Q1	6,796.6	977.4	7,773.9	646.1	16,826.7	1,722.0	19,194.9	8,315.7	3,201.5	503.6	173.4	12,194.2	76.5	-715.9	-1,000.0	-1,639.4	37,523.7	15,021.4	3,840.5	18,861.9	16,277.2	1,689.4	17,966.6	1,219.9	39,638.9
Q2	7,011.0	932.0	7,943.0	657.6	17,063.9	1,759.6	19,481.1	8,598.4	3,884.7	598.5	165.7	13,247.3	-33.4	-178.2	-76.0	-287.6	40,383.8	17,407.8	3,609.2	21,017.0	16,991.4	1,908.0	18,899.5	175.8	42,677.1
Q3	6,696.5	909.3	7,605.8	671.5	18,312.9	1,781.9	20,766.3	8,899.4	3,850.1	725.8	171.2	13,646.5	-37.6	-1,189.3	-1,114.3	-2,341.2	39,677.4	20,245.9	4,016.4	24,262.3	15,778.9	1,837.4	17,616.3	-1,925.6	44,397.8
Q4	6,809.3	900.8	7,710.1	687.2	18,920.6	1,673.3	21,281.1	8,970.6	4,179.8	569.3	178.2	13,897.8	63.8	46.2	-97.0	13.0	42,902.0	16,822.5	3,903.3	20,725.8	17,078.3	2,068.1	19,146.4	-631.6	43,849.8
2017 Q1	6,964.5	924.9	7,889.3	695.1	19,872.9	1,689.1	22,257.1	8,979.5	2,968.1	431.6	182.0	12,561.1	273.6	-158.0	-1,700.0	-1,584.4	41,123.1	17,571.5	2,630.1	20,201.6	12,149.7	2,123.0	14,272.7	-3,376.7	43,675.3
Q2	7,428.7	976.2	8,404.8	710.6	19,384.6	1,759.2	21,854.4	9,248.9	2,441.7	420.6	174.7	12,286.0	406.7	327.9	-512.0	222.5	42,767.8	15,006.8	2,607.1	17,613.8	12,013.6	2,227.3	14,240.9	-1,802.6	44,338.1
Q3	7,324.1	974.2	8,298.3	725.9	19,755.9	1,817.2	22,298.9	9,711.4	3,072.4	548.8	179.7	13,512.3	392.9	-363.9	-100.0	-71.1	44,038.4	13,271.1	2,539.5	15,810.6	12,962.6	2,510.0	15,472.6	1,499.6	45,876.0
Q4	7,611.1	986.5	8,597.6	733.2	19,828.0	1,812.5	22,373.7	9,837.6	3,463.2	587.2	186.0	14,074.0	239.4	76.8	-450.0	-133.8	44,911.6	15,556.2	2,810.0	18,366.2	14,658.1	2,409.0	17,067.1	1.9	46,212.6
2018 Q1	7,626.6	990.7	8,617.3	740.7	20,287.7	1,813.9	22,842.4	9,877.0	3,305.7	509.6	191.1	13,883.3	-54.7	28.1	550.0	523.4	45,866.4	13,827.5	2,512.0	16,339.5	14,165.5	1,232.0	15,397.5	-1,040.4	45,768.0
Q2	7,809.0	1,014.2	8,823.2	750.4	20,238.8	1,857.0	22,846.2	10,222.7	3,086.7	494.5	186.2	13,990.0	-280.1	855.2	-3,517.0	-2,941.9	42,717.5	18,934.5	2,365.0	21,299.5	14,555.4	1,543.0	16,098.4	-1,009.1	46,909.6
Q3	7,964.0	1,096.9	9,060.9	766.7	20,871.4	1,885.1	23,523.2	10,580.4	3,181.7	522.2	188.5	14,472.8	-434.3	-632.6	1,539.0	472.1	47,529.0	14,698.1	2,217.0	16,915.1	14,268.6	3,014.1	17,282.7	1,538.0	48,699.3
Q4	7,793.5	1,127.8	8,921.3	778.9	22,208.3	1,812.7	24,800.0	10,686.2	3,447.9	643.6	195.9	14,973.8	-510.1	217.4	719.0	426.3	49,121.3	17,601.8	2,567.1	20,168.8	18,661.3	3,365.8	22,027.0	1,228.5	48,491.6

Note: 2016-2018 estimates are provisional

Table 6: Gross Domestic Product by Type of Expenditure at Constant Prices (P million)

Calendar year	Government Final Consumption			Non-Profit Institutions	Household Final Consumption			Gross Fixed Capital Formation					Change in Inventories				Gross Domestic Expenditure	Exports			Imports			Errors & Omissions	Total GDP
	Central Govt	Local Govt	Total		Household Consumption (Mkt)	Household Consumption (Non-Mkt)	Total	Construction	Machinery & Equipment	Transport Equipment	Mineral Prospecting	Total	Livestock	Minerals	Others	Total		Goods	Services	Total	Goods	Services	Total		
2004	9,695.9	1,499.1	11,195.0	837.6	14,545.3	2,242.9	17,625.7	8,757.6	4,167.6	1,064.3	225.5	14,215.1	75.9	191.2	978.4	1,245.5	44,281.4	21,072.7	4,265.8	25,338.5	16,328.3	4,851.9	21,180.2	3,728.1	52,167.7
2005	8,918.5	1,568.8	10,487.3	1,022.1	16,252.3	2,250.6	19,525.0	9,190.2	4,062.8	974.9	251.9	14,479.8	80.7	-417.5	1,236.7	899.9	45,392.0	25,319.2	4,628.6	29,947.8	15,303.7	4,831.1	20,134.8	-660.2	54,544.8
2006	8,502.4	1,568.1	10,070.5	1,217.0	19,222.9	2,452.8	22,892.7	9,930.8	4,095.6	1,159.7	300.5	15,486.5	160.7	-1,164.1	828.2	-175.2	48,274.6	26,386.1	4,499.9	30,886.0	15,271.4	4,872.3	20,143.7	90.0	59,106.9
2007	8,798.4	1,626.7	10,425.1	1,326.2	21,952.7	3,046.3	26,325.1	10,268.9	4,901.3	1,718.7	354.9	17,243.8	125.3	-509.8	1,347.9	963.4	54,957.5	28,663.8	4,841.7	33,505.6	19,411.8	5,758.8	25,170.6	706.7	63,999.1
2008	9,193.5	1,751.4	10,944.9	1,082.0	26,187.9	3,598.5	30,868.4	9,213.3	6,121.7	2,251.6	232.2	17,818.8	157.2	801.9	1,813.5	2,772.6	62,404.8	27,555.5	5,119.2	32,674.7	24,666.2	4,920.2	29,586.5	2,503.0	67,996.1
2009	9,520.5	1,748.7	11,269.2	1,076.4	28,024.6	3,475.3	32,576.3	10,779.1	6,103.4	2,349.7	277.7	19,509.9	209.3	-300.6	1,561.0	1,469.7	64,825.2	18,677.1	1,688.9	20,365.9	21,737.6	4,628.8	26,366.4	3,968.0	62,792.8
2010	9,945.7	1,744.3	11,690.0	1,110.1	30,813.3	3,460.7	35,384.1	11,711.9	7,089.7	2,205.0	293.7	21,300.2	163.4	3,300.2	1,753.9	5,217.6	73,591.9	22,264.8	1,364.5	23,629.3	23,305.3	4,769.8	28,075.1	-976.0	68,170.1
2011	10,442.4	1,830.7	12,273.1	1,166.9	33,491.6	3,512.7	38,171.2	13,136.3	7,931.9	2,496.9	323.6	23,888.6	236.2	794.4	1,594.4	2,625.1	76,958.1	28,696.4	1,441.9	30,138.2	27,882.9	5,589.6	33,472.5	-1,330.5	72,293.3
2012	12,229.8	1,912.5	14,142.3	1,127.5	33,673.4	2,853.2	37,654.1	14,140.5	9,782.2	2,908.3	310.1	27,141.0	217.5	154.4	1,615.9	1,987.7	80,925.2	30,069.2	5,445.9	35,515.1	40,012.4	4,197.3	44,209.7	3,284.2	75,514.8
2013	14,059.4	2,117.9	16,177.3	989.8	37,035.6	3,430.1	41,455.5	15,747.1	9,491.1	2,063.6	387.2	27,689.0	-106.5	-2,742.7	1,355.6	-1,493.6	83,828.1	42,371.0	6,569.7	48,940.7	43,735.9	4,901.0	48,636.8	-51.3	84,080.7
2014	15,751.2	2,171.4	17,922.7	1,029.1	37,260.6	3,518.0	41,807.7	16,364.1	9,145.1	2,193.5	393.7	28,096.4	-77.6	-569.9	-1,753.9	-2,401.3	85,425.5	45,474.2	7,252.2	52,726.4	43,915.6	4,796.3	48,711.8	-1,870.6	87,569.5
2015	16,095.2	2,275.0	18,370.2	1,061.8	38,840.3	3,581.9	43,484.0	16,920.6	11,178.0	2,059.7	398.1	30,556.4	484.7	2,622.6	-2,116.7	990.6	93,401.2	36,352.6	7,788.1	44,140.7	44,955.5	4,888.8	49,844.3	-1,615.0	86,082.6
2016	16,363.5	2,428.7	18,792.2	1,093.2	39,680.7	3,676.6	44,450.5	17,626.2	11,661.6	1,971.7	410.2	31,669.7	-10.5	-2,462.9	655.7	-1,817.6	93,094.8	36,190.6	8,117.4	44,308.0	41,551.7	5,764.0	47,315.7	-299.7	89,787.4
2017	16,572.1	2,510.0	19,082.1	1,128.8	42,643.8	3,604.6	47,377.3	18,332.4	8,608.9	1,515.7	417.0	28,873.9	492.7	77.8	-2,850.0	-2,279.5	93,053.8	34,075.6	5,391.0	39,466.6	29,422.2	6,801.1	36,223.3	-3,899.1	92,398.0
2018	17,156.2	2,573.1	19,729.3	1,170.9	44,394.7	3,667.3	49,232.9	18,979.6	10,010.7	1,414.0	428.8	30,833.1	-505.5	236.9	-2,672.0	-2,940.6	96,854.7	36,256.1	4,810.1	41,066.2	33,774.3	6,841.5	40,615.8	-792.1	96,513.0
2004 Q1	2,469.8	420.1	2,889.9	197.2	3,606.9	507.5	4,311.6	2,198.2	957.4	308.4	57.4	3,521.4	19.5	107.3	353.8	480.6	11,203.5	5,246.3	1,311.1	6,557.4	3,969.3	1,550.0	5,519.3	-67.6	12,174.0
Q2	2,282.8	356.3	2,639.2	203.1	3,584.2	457.1	4,244.4	2,204.1	1,131.4	253.5	55.9	3,644.8	32.9	-242.9	361.8	151.8	10,680.1	4,411.1	724.1	5,135.2	3,890.3	1,018.4	4,908.7	1,446.5	12,353.1
Q3	2,487.8	348.3	2,836.0	213.4	3,520.7	675.3	4,409.5	2,271.6	1,013.1	267.3	56.4	3,608.4	14.7	211.8	132.7	359.2	11,213.1	5,956.2	814.3	6,770.5	4,219.0	1,275.6	5,494.6	1,237.4	13,726.4
Q4	2,455.5	374.4	2,829.9	223.9	3,833.4	602.9	4,660.2	2,083.7	1,065.8	235.2	55.8	3,440.5	8.9	115.0	130.1	254.0	11,184.6	5,459.1	1,416.3	6,875.4	4,249.7	1,007.9	5,257.6	1,111.7	13,914.2
2005 Q1	2,637.3	455.2	3,092.5	245.7	4,241.5	488.6	4,975.8	2,240.6	1,061.0	382.2	59.4	3,743.3	13.9	-367.0	291.6	-61.6	11,750.0	6,506.6	1,376.9	7,883.4	3,850.1	1,411.9	5,262.0	-1,531.9	12,839.5
Q2	1,907.2	340.8	2,247.9	251.6	3,787.2	587.3	4,626.2	2,264.6	944.5	191.3	59.6	3,460.1	17.1	-146.8	327.2	197.5	10,531.7	5,517.6	609.9	6,127.5	3,784.4	1,150.6	4,935.1	1,295.8	13,019.9
Q3	2,105.1	363.0	2,468.1	257.9	4,047.0	598.6	4,903.5	2,318.4	1,027.5	206.7	68.7	3,621.3	33.3	93.0	291.3	417.5	11,410.4	7,673.6	1,054.4	8,728.0	3,857.9	1,217.0	5,074.8	-878.8	14,184.8
Q4	2,268.9	409.8	2,678.8	266.9	4,176.5	576.1	5,019.5	2,366.6	1,029.8	194.7	64.1	3,655.2	16.4	3.4	326.7	346.5	11,699.9	5,621.4	1,587.4	7,208.8	3,811.3	1,051.6	4,862.9	454.8	14,500.6
2006 Q1	2,173.8	397.2	2,571.0	302.8	4,669.8	426.7	5,399.3	2,591.2	814.0	279.5	73.3	3,758.0	33.8	-908.7	199.1	-675.8	11,052.5	6,222.0	1,309.2	7,531.2	3,344.2	1,361.2	4,705.4	527.1	14,405.4
Q2	2,013.9	385.2	2,399.1	300.2	4,344.4	708.4	5,353.0	2,566.2	922.3	263.3	70.6	3,822.4	26.4	5,494.3	203.9	5,724.7	17,299.2	6,123.0	652.5	6,775.5	3,713.0	1,018.9	4,731.9	-4,970.5	14,372.3
Q3	2,130.6	387.3	2,517.9	312.5	5,179.1	623.3	6,114.8	2,611.3	1,140.3	289.2	77.4	4,118.1	59.7	-7,515.1	229.3	-7,226.1	5,524.7	6,134.3	911.9	7,046.2	4,059.6	1,357.0	5,416.6	8,198.8	15,353.1
Q4	2,184.1	398.4	2,582.5	301.5	5,029.6	694.5	6,025.6	2,162.1	1,219.0	327.7	79.2	3,788.0	40.7	1,765.4	195.9	2,002.1	14,398.2	7,906.8	1,626.4	9,533.2	4,154.6	1,135.2	5,289.8	-3,665.4	14,976.1
2007 Q1	2,275.5	401.6	2,677.0	308.7	4,843.2	749.4	5,901.3	2,272.3	1,010.9	395.2	111.8	3,790.3	33.6	-612.9	328.6	-250.6	12,117.9	8,483.5	1,336.2	9,819.7	4,022.6	1,635.4	5,657.9	-944.6	15,335.1
Q2	2,061.3	390.9	2,452.2	308.8	5,232.4	724.4	6,265.6	2,507.7	1,246.2	494.4	72.9	4,321.2	40.5	867.8	352.7	1,261.1	14,300.1	6,696.6	604.2	7,300.8	4,727.3	1,154.7	5,882.0	369.0	16,088.0
Q3	2,249.6	419.4	2,669.0	354.8	5,794.4	720.7	6,869.9	2,883.9	1,278.1	391.1	86.4	4,639.4	34.2	-962.5	346.9	-581.4	13,596.9	8,417.3	1,262.2	9,679.5	4,885.1	1,471.4	6,356.5	-602.4	16,317.6
Q4	2,212.0	414.9	2,626.9	353.8	6,082.7	851.7	7,288.3	2,605.0	1,366.1	438.0	83.7	4,492.9	17.0	197.8	319.6	534.4	14,942.5	5,066.4	1,639.1	6,705.5	5,776.9	1,497.4	7,274.3	1,884.7	16,258.4
2008 Q1	2,478.5	417.8	2,896.3	308.5	5,905.1	840.4	7,054.0	2,194.6	1,483.9	500.6	46.9	4,226.0	33.8	-192.6	1,419.6	1,260.9	15,437.1	8,262.0	1,565.7	9,827.7	5,776.8	1,464.1	7,240.9	-1,626.0	16,397.8
Q2	2,076.3	418.9	2,495.2	250.7	6,098.8	916.9	7,266.4	2,385.1	1,528.2	577.6	59.0	4,549.8	34.8	392.9	-214.0	213.7	14,525.1	6,932.1	1,074.4	8,006.5	6,272.6	1,133.1	7,405.7	1,939.5	17,065.3
Q3	2,263.8	448.7	2,712.5	256.9	7,286.9	882.9	8,426.7	2,289.2	1,528.2	543.3	67.0	4,427.7	27.2	-400.4	258.8	-114.3	15,452.5	8,634.0	1,370.8	10,004.8	6,473.4	1,103.5	7,576.9	-272.8	17,607.6
Q4	2,375.1	465.9	2,841.0	265.9	6,897.0	958.3	8,121.3	2,344.4	1,581.5	630.1	59.4	4,615.4	61.4	1,002.0	349.0	1,412.4	16,990.0	3,727.4	1,108.4	4,835.8	6,143.4	1,219.6	7,363.0	2,462.4	16,925.3
2009 Q1	2,648.1	460.7	3,108.8	267.8	6,591.8	814.8	7,674.5	2,600.7	1,403.8	718.2	56.1	4,778.8	42.6	-47.4	388.7	383.8	15,945.9	3,519.0	350.2	3,869.2	5,274.9	1,133.6	6,408.5	1,437.1	14,843.7
Q2	2,231.3	420.5	2,651.8	265.6	6,033.6	1,037.4	7,336.6	2,890.8	1,617.7	503.2	70.5	5,082.2	51.8	-286.0	393.6	159.4	15,230.1	5,021.7	504.7	5,526.3	5,409.2	1,252.9	6,662.2	1,717.3	15,811.5
Q3	2,331.6	436.7	2,768.3	276.4	7,898.3	814.4	8,989.0	2,821.6	1,442.3	434.6	80.1	4,778.6	62.4	-3.2	374.0	433.2	16,969.2	5,212.6	453.3	5,665.8	5,558.1	1,172.9	6,730.9	-121.3	15,782.8
Q4	2,309.4	430.8	2,740.3	266.7	7,501.0	808.6	8,576.3	2,466.0	1,639.6	693.7	71.0	4,870.2	52.6	36.0	404.6	493.3	16,680.0	4,923.8	380.8	5,304.6	5,495.3	1,069.4	6,564.8	935.0	16,354.8
2010 Q1	2,558.3	429.9	2,988.2	264.5	6,797.4	825.6	7,887.5	2,722.2	1,718.2	657.5	59.3	5,157.2	23.1	473											

Table 6 Continued: Gross Domestic Product by Type of Expenditure at Constant Prices (P million)

Calendar year	Government Final Consumption			Non-Profit Institutions	Household Final Consumption			Gross Fixed Capital Formation					Change in Inventories				Gross Domestic Expenditure	Exports			Imports			Errors & Omissions	Total GDP
	Central Govt	Local Govt	Total		Household Consumption (Mkt)	Household Consumption (Non-Mkt)	Total	Construction	Machinery & Equipment	Transport Equipment	Mineral Prospecting	Total	Livestock	Minerals	Others	Total		Goods	Services	Total	Goods	Services	Total		
2012 Q1	2,904.7	443.3	3,348.0	303.2	6,879.5	753.1	7,935.9	3,597.6	2,187.9	719.0	80.5	6,585.0	60.1	349.4	430.4	839.8	18,708.7	6,601.2	1,332.7	7,933.9	8,652.5	1,026.3	9,678.8	1,721.8	18,685.5
Q2	2,311.6	465.1	2,776.7	324.8	8,661.6	711.0	9,697.4	3,310.9	2,438.4	751.9	64.2	6,565.4	64.1	-53.3	381.1	391.8	19,431.3	6,864.9	1,327.6	8,192.5	8,505.6	1,086.4	9,592.0	550.6	18,582.4
Q3	3,071.8	493.5	3,565.3	259.8	8,850.7	653.0	9,763.5	3,589.8	2,590.6	730.1	90.2	7,000.7	59.9	-498.8	417.6	-21.3	20,308.2	8,825.5	1,326.7	10,152.2	12,694.7	1,253.3	13,947.9	1,927.8	18,440.3
Q4	3,941.7	510.6	4,452.3	239.6	9,281.6	736.1	10,257.3	3,642.2	2,565.3	707.3	75.2	6,990.0	33.5	357.1	386.8	777.4	22,477.0	7,777.6	1,459.0	9,236.5	10,159.6	831.4	10,991.0	-916.0	19,806.6
2013 Q1	3,687.4	524.5	4,211.8	244.1	9,698.6	780.0	10,722.7	3,875.9	1,987.5	507.6	95.7	6,466.6	-47.9	-2,461.4	364.2	-2,145.1	19,256.0	11,238.2	1,376.5	12,614.7	9,985.5	1,164.5	11,150.0	-212.8	20,508.0
Q2	3,313.6	526.4	3,840.0	245.2	9,057.5	980.4	10,283.1	3,919.5	2,564.7	615.6	96.6	7,196.3	-22.9	-798.9	924.9	103.1	21,422.5	9,410.3	1,701.4	11,111.7	10,874.3	1,303.6	12,178.0	575.6	20,931.9
Q3	3,219.5	530.3	3,749.9	248.5	8,869.7	841.3	9,959.5	3,960.7	2,436.4	411.2	97.1	6,905.4	-14.1	23.2	-504.8	-495.7	20,119.1	11,960.5	1,764.9	13,725.4	10,927.0	1,326.4	12,253.4	-673.9	20,917.2
Q4	3,838.9	536.7	4,375.5	252.0	9,409.8	828.4	10,490.2	3,991.0	2,502.6	529.3	97.8	7,120.7	-21.6	494.4	571.3	1,044.1	23,030.4	9,761.9	1,727.0	11,488.9	11,949.0	1,106.5	13,055.5	259.8	21,723.7
2014 Q1	3,895.7	555.3	4,451.0	254.4	9,764.2	828.7	10,847.3	4,036.1	2,406.2	529.2	98.0	7,069.5	-45.4	-328.5	-137.5	-511.3	21,856.5	10,280.4	1,790.7	12,071.0	11,270.5	1,210.6	12,481.1	-256.8	21,189.6
Q2	3,988.1	530.3	4,518.5	255.5	8,943.7	893.2	10,092.4	4,099.6	2,168.3	577.6	98.1	6,943.5	-44.5	-182.4	-715.8	-942.7	20,611.7	12,499.9	1,746.8	14,246.8	11,162.2	1,117.6	12,279.8	-691.5	21,887.2
Q3	3,872.2	536.3	4,408.5	258.1	8,970.3	907.4	10,135.8	4,092.9	1,769.5	551.8	98.2	6,512.3	-19.0	426.0	-573.5	-166.5	20,890.1	11,929.5	1,843.9	13,773.4	10,765.7	1,122.3	11,888.0	-597.0	22,178.5
Q4	3,995.2	549.5	4,544.7	261.2	9,582.4	888.7	10,732.3	4,135.5	2,801.1	534.8	99.5	7,571.0	31.2	-485.0	-327.1	-780.8	22,067.1	10,764.4	1,870.8	12,635.2	10,717.1	1,345.8	12,062.9	-325.2	22,314.2
2015 Q1	3,980.7	570.3	4,551.1	262.9	9,914.7	892.8	11,070.4	4,139.6	2,403.6	462.5	102.3	7,108.0	106.0	53.8	-1,099.7	-939.9	21,789.5	11,510.2	1,746.1	13,256.2	11,078.1	1,206.9	12,285.1	-985.1	21,775.6
Q2	4,044.6	559.3	4,604.0	264.0	9,368.4	901.2	10,533.6	4,231.8	2,822.9	512.6	95.4	7,662.7	142.0	102.5	-907.1	-662.6	22,137.7	11,476.7	2,032.2	13,508.9	11,893.0	1,142.8	13,035.8	-788.8	21,822.1
Q3	3,953.7	569.6	4,523.3	266.4	9,747.5	890.3	10,904.3	4,273.1	3,076.9	522.9	98.4	7,971.4	139.2	101.1	753.4	993.7	24,392.7	6,472.5	2,054.0	8,526.5	11,154.9	1,079.0	12,233.9	285.3	20,970.7
Q4	4,116.2	575.7	4,691.8	268.5	9,809.7	897.5	10,975.7	4,276.1	2,874.5	561.7	102.0	7,814.3	97.5	2,365.2	-863.3	1,599.3	25,081.2	6,893.2	1,955.8	8,849.0	10,829.4	1,460.2	12,289.6	-126.4	21,514.2
2016 Q1	4,061.9	599.6	4,661.5	270.4	10,170.8	926.9	11,368.1	4,321.1	2,519.7	412.6	104.6	7,358.0	16.9	-1,831.8	2,000.0	185.1	23,572.6	7,435.3	2,066.7	9,502.0	10,708.2	1,348.9	12,057.2	1,250.0	22,267.5
Q2	4,114.5	598.5	4,713.0	271.9	9,333.4	933.7	10,538.9	4,435.8	3,132.0	501.6	99.0	8,168.5	-23.1	-373.6	700.0	303.2	23,723.6	9,063.3	1,914.8	10,978.1	10,887.8	1,495.0	12,382.8	354.5	22,673.5
Q3	4,042.5	610.5	4,653.1	275.5	9,964.9	939.5	11,179.8	4,432.5	2,929.0	594.9	101.6	8,058.0	-22.6	-461.5	-1,655.0	-2,139.1	21,751.8	10,750.3	2,113.2	12,863.5	9,746.0	1,387.6	11,133.6	-1,064.7	22,417.0
Q4	4,144.6	620.1	4,764.7	275.5	10,211.6	876.6	11,363.7	4,436.8	3,080.9	462.6	105.0	8,085.3	18.4	204.0	-389.3	-166.9	24,046.8	8,941.6	2,022.7	10,964.3	10,209.7	1,532.5	11,742.2	-839.5	22,429.4
2017 Q1	4,034.6	624.3	4,658.8	276.2	10,523.7	867.8	11,667.8	4,482.7	2,141.1	338.3	106.4	7,068.5	100.9	2.2	-1,710.0	-1,606.9	21,788.2	9,547.6	1,351.1	10,898.7	6,986.0	1,537.2	8,523.2	-1,699.4	22,464.2
Q2	4,198.4	627.0	4,825.4	280.9	10,199.2	898.8	11,378.9	4,600.4	1,745.9	324.5	101.4	6,772.0	153.2	176.4	-590.0	-260.4	22,716.0	8,328.7	1,331.8	9,660.5	6,722.1	1,619.7	8,341.8	-1,172.1	22,862.6
Q3	4,108.7	628.1	4,736.7	285.0	10,953.2	922.2	12,160.4	4,604.4	2,233.3	422.8	103.2	7,363.6	148.7	-242.2	-100.0	-193.5	24,067.3	7,452.1	1,288.5	8,740.6	7,460.7	1,851.5	9,312.1	-295.3	23,200.4
Q4	4,230.5	630.6	4,861.1	286.7	10,967.7	915.8	12,170.2	4,644.9	2,488.7	430.1	106.1	7,669.8	89.8	141.4	-450.0	-218.7	24,482.4	8,747.2	1,419.6	10,166.8	8,253.4	1,792.7	10,046.1	-732.4	23,870.7
2018 Q1	4,168.3	634.3	4,802.6	287.3	11,211.7	909.3	12,408.4	4,658.0	2,370.7	336.2	108.4	7,473.3	-23.9	29.2	-1,200.0	-1,194.7	23,489.6	8,233.6	1,258.9	9,492.4	7,637.5	873.7	8,511.2	-992.9	23,478.0
Q2	4,301.9	639.4	4,941.3	290.1	10,918.7	925.3	12,134.1	4,744.8	2,413.5	322.7	104.8	7,585.8	-111.0	369.8	-2,500.0	-2,241.2	22,420.0	10,724.2	1,181.1	11,905.3	7,949.6	1,124.7	9,074.3	-1,193.1	24,057.9
Q3	4,376.8	647.4	5,024.2	295.4	11,013.1	936.5	12,244.9	4,767.5	2,521.4	338.4	106.2	7,733.5	-170.6	-416.8	468.0	-119.5	24,883.2	7,910.8	1,101.2	9,012.0	7,955.4	2,284.8	10,240.3	471.3	24,126.2
Q4	4,309.1	652.0	4,961.1	298.1	11,251.2	896.2	12,445.6	4,809.2	2,705.2	416.8	109.3	8,040.5	-199.9	254.7	560.0	614.7	26,061.9	9,387.5	1,268.9	10,656.4	10,231.8	2,558.3	12,790.0	922.6	24,850.9

Note: 2016-2018 estimates are provisional

