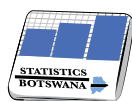




CONSUMER PRICE INDEX

July 2019



STATISTICS BOTSWANA

Contact Statistician:
Phaladi Labobedi

Private Bag 0024, Gaborone
Tel: 3671300 **Fax:** 3952201
Toll Free: 0800 600 200

Private Bag F193,
City of Francistown Botswana
Tel. 241 5848, **Fax.** 241 7540

Private Bag 32
Ghanzi
Tel: 371 5723 **Fax:** 659 7506

Private Bag 47
Maun
Tel: 371 5716 **Fax:** 686 4327

E-mail: info@statsbots.org.bw **Website:** <http://www.statsbots.org.bw>

CONTENTS

SECTION 1: Headline Inflation.....	1
SECTION 2: Core Inflation.....	1
GLOSSARY	11

CHARTS

CHART 1: National Rates of Inflation.....	2
CHART 2: Monthly Changes In the Consumer Price Index.....	2
CHART 3: Non-Tradeables Inflation Rates.....	2
CHART 4: Tradeables Inflation Rates.....	2

TABLES

TABLE 1: Consumer Price Index (December 2018 =100.0).....	3
TABLE 2: National Consumer Price Group & Section Indices (December 2018= 100.0).....	5
TABLE 3: Consumer Price Index by Tradeability (December 2018 = 100.0).....	7
TABLE 4: Core Inflation Rates by Exclusion and Trimmed Mean.....	8
TABLE 5: Average Annual Inflation (December 2018= 100.0).....	9

COMMENTARY

SECTION 1: HEADLINE INFLATION

The annual inflation rate in July 2019 was 2.9 percent, registering an increase of 0.1 of a percentage point on the June 2019 rate of 2.8 percent. The inflation rates for regions between June 2019 and July 2019 showed that Cities & Towns increased to 3.1 percent from 3.0 percent, Urban Villages' went up to 3.0 percent from 2.9 percent while the Rural Villages' remained unchanged at 2.1 percent in July.

The national Consumer Price Index moved to 101.7 in July 2019, registering a rise of 0.2 percent from 101.5, which was recorded in June 2019. The Cities & Towns advanced from 101.6 in June to 101.8 in July recording an increase of 0.2 percent. The Urban Villages' Index realised a rise of 0.2 percent, moving from 101.6 in June to 101.8 in July 2019. The Rural Villages index registered an increase of 0.1 percent, moving from 101.1 to 101.2 over the two periods.

Group indices were generally moving at a steady pace between June 2019 and July 2019, recording changes of less than 1.0 percent.

The Miscellaneous Goods & Services group Index moved from 105.0 in June 2019 to 105.4 in July, recording a rise of 0.4 percent. This was attributed to the general increase in the constituent section indices.

The Alcoholic Beverages & Tobacco group index registered an increase of 0.3 percent, from 103.2 in June 2019 to 103.5 in July 2019. This was due to the rise in the constituent section indices, notably; Alcoholic Beverages (0.4 percent).

The Restaurants & Hotels group index moved from 101.3 to 101.6, recording an increase of 0.3 percent over the two months. This was credited to the overall increase in the constituent section indices.

The All-Tradeables index registered a rise of 0.2 percent, from 101.4 in June to 101.6 in July. The Domestic Tradeables Index realized an increase of 0.3 percent, moving from 102.5 in June to 102.7 in July 2019. The Imported Tradeables Index recorded a rise of 0.2 percent, advancing from 101.0 in June to 101.2 in July 2019. The Non-Tradeables Index advanced from 101.6 in June to 101.8 in July recording an increase of 0.1 percent.

All-Tradeables inflation rate was 3.4 percent in July 2019, registering a rise of 0.2 of a percentage point on the June 2019 rate of 3.2 percent. The Domestic Tradeables inflation rate moved from 2.6 percent to 2.9 percent over the two months. The Imported Tradeables inflation rate went up from 3.6 percent in June to 3.7 percent in July, while the Non-Tradeables inflation rate remained at 2.0 percent during the period under review.

SECTION 2: CORE INFLATION

The Trimmed Mean Core Inflation rate in July 2019 was 2.6 percent, an increase of 0.1 of a percentage point on the June 2019 rate of 2.5 percent. The Core Inflation rate by exclusion registered a rise of 0.1 of a percentage point moving from 2.0 percent in June to 2.1 percent in July.

CHARTS

Chart 1: National Inflation Rate 2016 - 2019

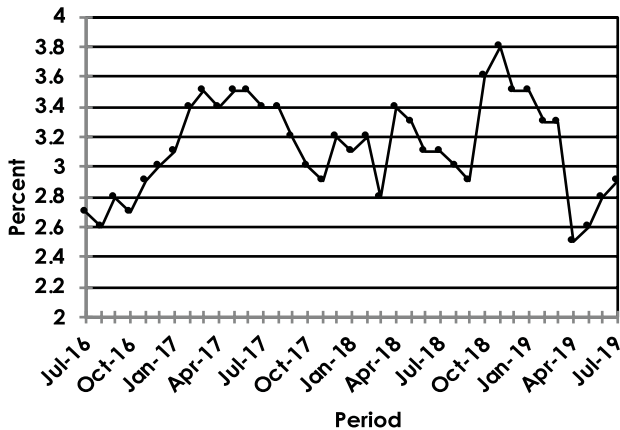


Chart 2: Monthly Changes in Consumer Price Index 2016 - 2019

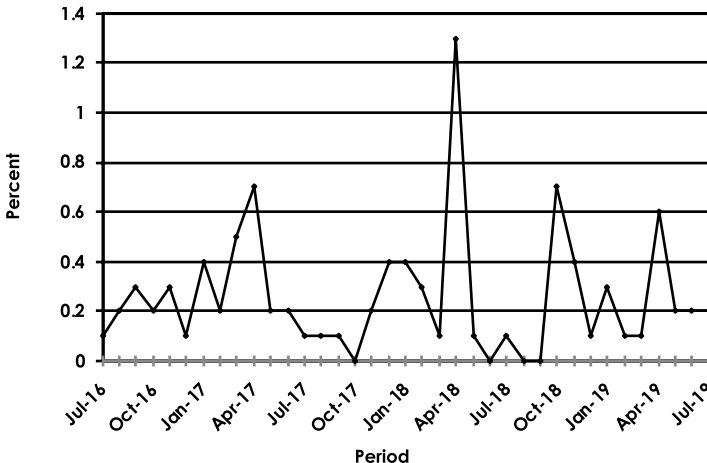


Chart 3: Non-Tradeables Inflation 2016 - 2019

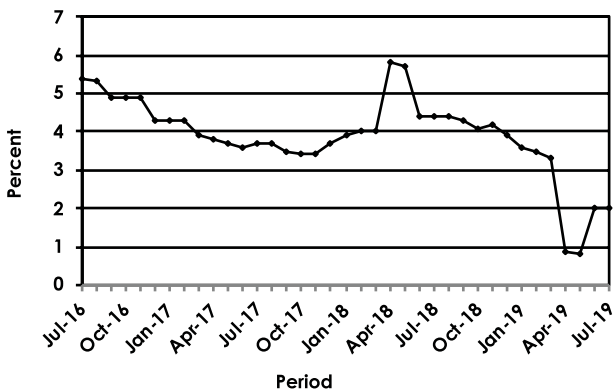
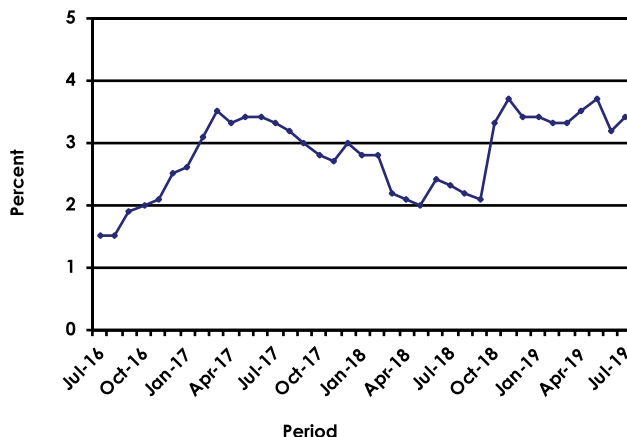


Chart 4: Tradeables Inflation 2016 - 2019



Dr. Burton S. Mguni
 Statistician General
 15th August 2019

TABLES

TABLE 1 : CONSUMER PRICE INDEX (DECEMBER 2018 =100.0)

		Food	Alcohol and Tobacco	Clothing and Footwear	Housing	Furniture etc	Health	Transport	Communi-cation	Rec. & Culture	Education	Rest. & Hotels	Miscella-neous
Weights		13.55	4.34	5.95	17.45	4.85	3.38	23.43	6.94	2.82	4.60	3.66	9.01
2016	Jan	95.8	93.2	92.4	88.4	93.2	94.5	87.6	108.8	95.1	91.0	90.9	85.0
	Feb	96.3	93.4	93.0	88.3	93.3	94.6	86.4	108.8	95.6	91.0	91.2	84.7
	Mar	96.6	93.4	93.5	89.5	93.5	94.6	86.5	108.8	95.7	91.0	91.4	84.9
	Apr	97.4	93.9	94.0	89.5	93.6	94.9	86.6	108.8	95.8	91.0	91.7	90.4
	May	97.5	94.1	94.4	89.4	93.7	96.7	86.7	108.8	95.8	91.0	91.8	90.4
	Jun	97.2	94.2	94.9	90.2	94.2	96.8	87.0	108.8	95.8	91.0	92.2	90.7
	Jul	97.5	94.5	95.1	90.1	94.3	96.8	87.1	108.8	95.9	91.0	92.2	90.8
	Aug	97.8	94.6	95.3	90.2	94.5	96.8	87.1	108.8	96.0	91.0	92.5	90.8
	Sept	98.1	94.6	95.4	91.1	94.9	96.8	87.1	108.8	96.2	91.0	92.9	90.8
	Oct	98.5	95.2	95.6	91.1	95.0	96.8	87.1	108.8	96.3	91.0	93.1	91.2
	Nov	99.0	95.8	96.0	91.2	95.5	97.0	87.2	108.8	96.4	91.0	93.4	91.3
	Dec	99.1	95.8	96.1	91.3	95.7	97.1	87.3	108.8	96.4	91.0	93.5	91.3
2017	Jan	100.0	96.8	96.5	91.5	96.1	97.6	86.8	108.9	96.8	94.7	94.2	91.5
	Feb	100.4	97.4	96.8	91.6	96.5	97.7	87.0	108.9	97.2	94.7	94.4	91.7
	Mar	100.9	97.9	97.0	92.0	96.9	97.8	87.9	108.9	97.4	94.7	94.8	92.0
	Apr	101.1	98.5	97.2	95.5	97.0	97.9	88.0	108.9	98.1	94.7	95.0	92.2
	May	101.5	99.0	97.4	95.5	97.2	98.0	88.1	109.0	98.1	94.7	95.3	92.3
	Jun	101.4	99.0	97.5	95.7	97.4	98.6	88.3	109.2	98.2	94.8	95.5	93.2
	Jul	101.6	99.1	97.9	95.8	97.6	98.7	88.3	109.2	98.3	94.8	95.9	93.2
	Aug	101.5	99.2	98.1	95.8	97.7	98.8	88.5	109.2	98.4	94.8	96.2	93.2
	Sept	100.9	99.3	98.3	96.4	97.9	98.8	88.6	110.3	98.3	94.8	96.4	93.3
	Oct	100.8	99.1	98.4	96.3	98.0	98.8	88.6	110.3	98.4	94.9	96.6	93.4
	Nov	100.7	99.0	98.4	96.3	98.1	98.9	89.4	110.3	98.3	94.9	96.6	93.4
	Dec	100.2	99.1	98.5	96.7	97.9	98.9	90.9	110.1	98.5	94.9	97.1	93.9
2018	Jan	100.4	99.1	98.6	96.8	98.1	99.0	91.2	110.2	98.7	99.9	97.4	94.2
	Feb	100.8	99.2	98.7	96.9	98.4	99.1	91.5	110.2	99.0	99.9	97.8	94.7
	Mar	100.9	99.3	98.9	97.2	99.0	99.2	91.4	110.3	99.4	100.0	97.9	94.9
	Apr	101.0	99.2	99.3	98.6	99.1	99.2	93.5	110.3	100.0	100.0	98.4	100.0
	May	100.9	99.5	99.5	98.7	99.2	99.4	93.6	110.3	100.1	100.0	98.6	100.1
	Jun	100.7	99.7	99.6	99.2	99.5	99.4	95.0	100.2	100.1	100.0	99.0	100.2
	Jul	100.5	99.9	99.9	99.2	99.6	99.5	95.1	100.2	100.2	100.0	99.4	100.3
	Aug	100.2	100.1	99.8	99.3	99.6	99.5	95.2	100.2	100.2	100.0	99.5	100.3
	Sept	99.9	100.1	99.8	99.7	100.0	99.7	95.0	100.2	100.2	100.0	99.7	100.2
	Oct	99.8	100.2	99.7	99.7	100.0	99.8	98.4	100.2	99.8	100.0	99.7	99.8
	Nov	99.9	100.2	99.8	99.9	100.1	99.9	99.8	100.2	99.9	100.0	99.7	99.8
	Dec	100.0	100.0	100.0	100.0	100.0	100.0	100.0	100.0	100.0	100.0	100.0	100.0
2019	Jan	100.4	99.8	100.2	100.1	100.2	100.1	100.3	100.0	100.1	103.0	100.0	100.3
	Feb	100.6	99.6	100.2	100.1	100.4	100.2	100.6	100.0	100.1	103.1	100.1	100.6
	Mar	101.0	99.9	100.3	100.3	100.6	100.3	100.5	100.0	100.4	103.1	100.6	100.4
	Apr	101.4	101.2	100.4	100.3	100.7	100.3	100.7	100.0	100.2	103.1	100.8	104.9
	May	102.0	102.4	100.5	100.4	100.8	100.4	100.8	100.0	100.2	103.1	101.1	104.9
	Jun	102.0	103.2	100.7	100.9	101.6	100.5	100.6	100.1	100.2	103.1	101.3	105.0
	Jul	102.1	103.5	100.8	101.0	101.8	100.6	100.9	100.1	100.3	103.1	101.6	105.4
% Change on													
Last month													
		0.1	0.3	0.1	0.1	0.2	0.1	0.2	0.1	0.1	0.0	0.3	0.4

Consumer Price Index- July 2019

TABLE 1: CONSUMER PRICE INDEX (Cont.)

		All Items Index	National Inflation Rate	Monthly Change	Towns & Cities Index	Urban Village Index	Rural Villages Index	Annual Inflation		
								Towns & Cities	Urban Villages	Rural
		100.0	%	%	0.38	0.41	0.21	%	%	%
2016	Jan	91.2	2.7	0.4	90.3	91.8	91.8	2.7	2.6	2.8
	Feb	91.2	3.0	(0.0)	90.1	91.9	92.0	2.9	3.2	3.1
	Mar	91.5	3.0	0.3	90.5	92.2	92.1	3.1	3.2	2.7
	Apr	92.3	2.8	0.9	91.4	93.0	92.7	2.6	3.2	2.7
	May	92.4	2.8	0.1	91.5	93.1	92.9	2.7	3.1	2.5
	Jun	92.6	2.7	0.2	91.7	93.2	93.1	2.5	2.8	2.6
	Jul	92.7	2.7	0.1	91.8	93.3	93.6	2.5	2.7	3.0
	Aug	92.9	2.6	0.2	92.0	93.4	93.7	2.6	2.6	2.9
	Sept	93.1	2.8	0.3	92.3	93.5	93.9	2.8	2.7	2.9
	Oct	93.3	2.7	0.2	92.4	93.7	94.2	2.5	2.7	3.1
	Nov	93.5	2.9	0.3	92.6	93.9	94.6	2.7	2.9	3.5
	Dec	93.6	3.0	0.1	92.7	93.9	94.7	2.8	3.0	3.5
2017	Jan	94.0	3.1	0.4	93.1	94.3	95.1	3.1	2.8	3.6
	Feb	94.2	3.4	0.2	93.3	94.6	95.5	3.5	2.9	3.8
	Mar	94.7	3.5	0.5	93.8	95.0	95.9	3.6	3.0	4.2
	Apr	95.4	3.4	0.7	94.4	95.8	96.5	3.3	3.0	4.2
	May	95.6	3.5	0.2	94.6	96.0	96.8	3.4	3.1	4.1
	Jun	95.8	3.5	0.2	94.8	96.2	96.8	3.4	3.3	3.9
	Jul	95.9	3.4	0.1	95.0	96.3	97.0	3.5	3.2	3.7
	Aug	96.0	3.4	0.1	95.0	96.4	97.1	3.4	3.2	3.6
	Sept	96.1	3.2	0.1	95.2	96.3	97.2	3.2	3.0	3.4
	Oct	96.1	3.0	0.0	95.2	96.2	97.3	3.0	2.7	3.3
	Nov	96.2	2.9	0.2	95.5	96.4	97.4	3.1	2.6	3.0
	Dec	96.6	3.2	0.4	96.0	96.6	97.6	3.6	2.9	3.1
2018	Jan	97.0	3.1	0.4	96.4	97.0	97.8	3.6	2.9	2.8
	Feb	97.2	3.2	0.3	96.7	97.3	98.1	3.6	2.9	2.7
	Mar	97.4	2.8	0.1	96.8	97.5	98.1	3.3	2.6	2.3
	Apr	98.7	3.4	1.3	98.4	98.7	99.1	4.2	3.1	2.7
	May	98.7	3.3	0.1	98.5	98.8	99.1	4.1	3.0	2.5
	Jun	98.8	3.1	0.0	98.6	98.8	99.0	4.0	2.7	2.3
	Jul	98.8	3.1	0.1	98.7	98.9	99.1	3.9	2.7	2.1
	Aug	98.8	3.0	(0.0)	98.6	98.9	99.1	3.8	2.6	2.0
	Sept	98.9	2.9	0.0	98.7	98.9	99.1	3.6	2.7	2.0
	Oct	99.5	3.6	0.7	99.5	99.5	99.7	4.4	3.4	2.5
	Nov	99.9	3.8	0.4	99.9	99.8	100.0	4.7	3.6	2.6
	Dec	100.0	3.5	0.1	100.0	100.0	100.0	4.2	3.5	2.5
2019	Jan	100.3	3.5	0.3	100.4	100.3	100.2	4.1	3.4	2.4
	Feb	100.5	3.3	0.1	100.6	100.5	100.3	4.0	3.2	2.3
	Mar	100.6	3.3	0.1	100.6	100.6	100.3	3.9	3.2	2.2
	Apr	101.2	2.5	0.6	101.2	101.3	100.8	2.9	2.6	1.7
	May	101.3	2.6	0.2	101.4	101.5	100.9	2.9	2.7	1.8
	Jun	101.5	2.8	0.2	101.6	101.6	101.1	3.0	2.9	2.1
	Jul	101.7	2.9	0.2	101.8	101.8	101.2	3.1	3.0	2.1
% Change on last month		0.2			0.2	0.2	0.1			

TABLE 2: NATIONAL CONSUMER PRICE GROUP AND SECTION INDICES (DECEMBER 2018=100.0)

	Group Section	Weights	This month Jul 2019	Last month Jun 2019	3 months ago Apr 2019	6 months ago Jan 2019	12 months ago Jul 2018	Percentage Change on:			
								Last month	3 months ago	6 months ago	12 months ago
1	Food & Non-Alcoholic Beverages	13.55	102.1	102.0	101.4	100.4	100.5	0.1	0.7	1.7	1.6
1.1	Bread & Cereals	4.26	102.5	102.1	101.0	100.2	101.6	0.4	1.5	2.3	0.9
1.2	Meat (Fresh, Chilled & Frozen)	2.36	102.0	101.9	101.8	100.6	100.3	0.0	0.1	1.4	1.7
1.3	Fish (Fresh, Chilled & Frozen)	0.18	102.9	102.7	101.5	100.3	100.1	0.2	1.4	2.6	2.8
1.4	Milk, Cheese & Milk Products	0.98	101.8	101.1	101.0	100.1	98.6	0.7	0.8	1.7	3.3
1.5	Oils & Fats	0.92	100.4	100.5	100.2	99.9	101.4	(0.1)	0.1	0.5	(1.0)
1.6	Fruits	0.78	102.6	103.0	103.0	100.9	99.6	(0.4)	(0.4)	1.7	3.1
1.7	Vegetables	1.08	104.0	105.2	103.2	101.0	102.5	(1.2)	0.7	2.9	1.4
1.8	Sugar, Jam, Honey, Chocolate & Confectionery	1.11	99.4	99.4	99.7	100.1	97.8	0.0	(0.3)	(0.7)	1.6
1.9	Food Not Elsewhere Classified	0.54	103.5	103.5	102.7	100.6	100.3	0.0	0.8	2.9	3.2
1.10	Coffee, Tea & Cocoa	0.73	101.8	102.0	101.4	100.7	98.4	(0.2)	0.4	1.1	3.5
1.11	Mineral Waters, Soft Drinks, Fruits & Vegetables Juices	0.62	102.4	102.3	101.9	100.5	99.7	0.1	0.5	1.9	2.7
2	Alcoholic Beverages & Tobacco	4.34	103.5	103.2	101.2	99.8	99.9	0.3	2.2	3.7	3.6
2.1	Alcoholic Beverages	3.51	103.5	103.2	101.1	99.6	99.9	0.4	2.4	3.9	3.7
2.2	Tobacco	0.82	103.2	103.1	101.9	100.3	99.9	0.1	1.2	2.8	3.3
3	Clothing & Footwear	5.95	100.8	100.7	100.4	100.2	99.9	0.1	0.4	0.6	0.9
3.1	Clothing	2.60	101.0	101.1	100.6	100.2	100.1	(0.0)	0.4	0.8	1.0
3.2	Other Articles of Clothing	0.72	100.4	100.3	100.4	100.4	99.8	0.1	(0.0)	(0.0)	0.6
3.3	Cleaning, Repair & Hire	0.61	101.0	100.7	100.3	100.0	98.7	0.3	0.7	1.0	2.3
3.4	Footwear	2.03	100.5	100.4	100.2	100.1	100.3	0.1	0.3	0.4	0.2
4	Housing, Water, Electricity, Gas & Other Fuels	17.45	101.0	100.9	100.3	100.1	99.2	0.1	0.6	0.9	1.8
4.1	Rent Paid by Tenants	7.78	101.5	101.5	100.4	100.0	99.0	0.0	1.2	1.5	2.6
4.2	Materials for Maintenance & Repair of Dwellings	3.83	101.3	100.9	100.9	100.4	99.2	0.4	0.4	0.9	2.1
4.3	Water Supply & Miscellaneous Services	1.96	100.0	100.0	100.0	100.0	100.0	0.0	0.0	0.0	0.0
4.4	Electricity, Gas & Other Fuels	3.89	100.0	100.0	99.9	100.0	99.0	0.0	0.1	0.0	1.0
5	Furnishing, H/H Equipment & Routine Maintenance	4.85	101.8	101.6	100.7	100.2	99.6	0.2	1.1	1.6	2.3
5.1	Furniture & Furnishing	1.35	101.2	100.5	100.4	100.2	99.5	0.7	0.8	1.0	1.7
5.2	Carpets & Other Floor Coverings	0.27	100.8	100.7	100.2	100.2	99.5	0.1	0.6	0.6	1.3
5.3	Household Textiles	0.29	100.8	100.4	100.1	99.9	99.7	0.4	0.7	0.9	1.2
5.4	Household Appliances	0.72	100.1	100.0	100.1	100.1	100.2	0.0	(0.1)	(0.0)	(0.2)
5.5	Glassware, Tableware & Household Utensils	0.23	101.5	101.3	100.5	100.4	99.3	0.2	1.0	1.2	2.2
5.6	Small Tools, Miscellaneous Accessories	0.04	101.9	101.7	101.3	100.5	100.4	0.2	0.6	1.4	1.5
5.7	Goods & Services for Household Maintenance	1.95	103.2	103.3	101.4	100.3	99.4	(0.1)	1.8	2.9	3.8
6	Health	3.38	100.6	100.5	100.3	100.1	99.5	0.1	0.3	0.5	1.1
6.1	Medical Products, Applications & Equipments	0.98	101.7	101.5	101.1	100.5	98.0	0.2	0.6	1.3	3.8
6.2	Out-Patient Services	0.93	100.4	100.3	100.1	100.0	99.8	0.1	0.3	0.4	0.7
6.3	Hospital Services	1.47	100.0	100.0	100.0	100.0	100.0	0.0	0.0	0.0	0.0

TABLE 2: NATIONAL CONSUMER PRICE GROUP AND SECTION INDICES (DECEMBER 2018=100.0) (Cont.)

	Group Section	Weights	This month Jul 2019	Last month Jun 2019	3 months ago Apr 2019	6 months ago Jan 2019	12 months ago Jul 2018	Percentage Change on:			
								Last month	3 months ago	6 months ago	12 months ago
7	Transport	23.43	100.9	100.6	100.7	100.3	95.1	0.2	0.2	0.6	6.0
7.1	Purchase of Vehicles	5.74	102.7	101.9	102.4	101.1	97.7	0.8	0.3	1.7	5.1
7.2	Operation of Personal Transport	12.56	100.3	100.3	100.1	100.0	92.3	0.0	0.2	0.3	8.7
7.3	Transport Services	5.13	100.1	100.1	100.1	100.0	100.0	0.0	0.0	0.1	0.1
8	Communication	6.94	100.1	100.1	100.0	100.0	100.2	0.1	0.1	0.1	(0.0)
8.1	Postal Services	0.21	100.0	100.0	100.0	100.0	100.0	0.0	0.0	0.0	0.0
8.2	Telephone & Telefax Equipment	1.13	100.9	100.6	100.0	100.0	100.8	0.3	0.9	0.9	0.1
8.3	Telephone & Telefax Services	5.60	100.0	100.0	100.0	100.0	100.0	0.0	0.0	0.0	(0.0)
9	Recreation & Culture	2.82	100.3	100.2	100.2	100.1	100.2	0.1	0.2	0.2	0.1
9.1	Audio Visual, Photographic & Information Processing Equipment	2.10	100.2	100.1	100.1	100.1	100.4	0.1	0.1	0.1	(0.2)
9.2	Other Recreational Items & Equipments	0.30	100.9	100.9	100.6	100.2	100.0	0.0	0.3	0.7	0.9
9.3	Recreational & Cultural Services	0.31	99.8	99.9	100.0	100.0	100.0	(0.1)	(0.2)	(0.2)	(0.2)
9.4	Newspapers, Books & Stationary	0.11	102.0	101.8	100.2	100.0	99.2	0.2	1.8	2.0	2.9
10	Education	4.60	103.1	103.1	103.1	103.0	100.0	0.0	0.0	0.2	3.2
10.1	Pre-Primary & Primary Education	1.89	103.4	103.4	103.3	103.0	100.0	0.0	0.0	0.3	3.4
10.2	Secondary & Tertiary Education	2.70	103.0	103.0	102.9	102.9	100.0	0.0	0.0	0.0	3.0
11	Restaurants & Hotels	3.66	101.6	101.3	100.8	100.0	99.4	0.3	0.8	1.6	2.2
11.1	Restaurants, Cafes & the Like	3.02	101.6	101.2	100.8	100.0	99.5	0.3	0.8	1.6	2.1
11.2	Accommodation Services	0.64	102.0	101.7	101.0	100.2	99.3	0.3	1.1	1.8	2.7
12	Miscellaneous Goods & Services	9.01	105.4	105.0	104.9	100.3	100.3	0.4	0.5	5.1	5.0
12.1	Personal Care	2.33	101.7	101.5	100.9	100.5	100.2	0.2	0.8	1.1	1.4
12.2	Personal Effects Not Elsewhere Classified	0.22	100.1	100.2	100.2	100.0	100.5	(0.1)	(0.1)	0.0	(0.4)
12.3	Social Protection	0.13	101.6	101.6	101.6	101.6	100.0	0.0	0.0	0.0	1.6
12.4	Insurance	3.62	111.9	111.1	111.4	100.2	100.7	0.7	0.4	11.6	11.1
12.5	Financial Services	1.09	100.8	100.7	100.3	100.0	98.9	0.1	0.5	0.8	1.9
12.6	Taxes, Licences & Fees	1.61	100.4	100.3	100.1	100.0	100.0	0.1	0.3	0.4	0.4
	All-Items Index	100.0	101.7	101.5	101.2	100.3	98.8	0.2	0.5	1.4	2.9

TABLE 3: CONSUMER PRICE INDEX BY TRADEABILITY (DECEMBER 2018 = 100.0)

	All Items		Non-Tradable		Domestic Tradable		Imported Tradable		All Tradable		
	Index	Inflation	Index	Inflation	Index	Inflation	Index	Inflation	Index	Inflation	
Weights	100.00		42.29		15.46		42.26		57.71		
2016	Jan	91.2	2.7	89.3	7.3	94.7	2.6	91.0	-0.3	92.0	0.8
	Feb	91.2	3.0	89.3	7.0	95.1	2.5	90.7	0.7	92.0	1.4
	Mar	91.5	3.0	89.8	7.3	95.3	2.1	91.0	0.8	92.2	1.3
	Apr	92.3	2.8	91.5	6.1	95.9	2.3	91.3	0.9	92.6	1.4
	May	92.4	2.8	91.7	6.0	96.1	2.5	91.4	0.8	92.7	1.4
	Jun	92.6	2.7	92.1	5.4	96.0	2.5	91.5	0.9	92.8	1.5
	Jul	92.7	2.7	92.2	5.4	96.2	2.8	91.6	0.7	93.0	1.5
	Aug	92.9	2.6	92.2	5.3	96.6	3.0	91.7	0.6	93.2	1.5
	Sept	93.1	2.8	92.7	4.9	96.7	3.5	91.9	0.9	93.3	1.9
	Oct	93.3	2.7	92.8	4.9	97.0	3.1	92.1	0.9	93.5	1.9
	Nov	93.5	2.9	92.8	4.9	97.4	3.4	92.4	1.2	93.9	2.1
	Dec	93.6	3.0	92.8	4.3	97.6	3.6	92.4	1.8	94.0	2.5
2017	Jan	94.0	3.1	93.1	4.3	98.8	4.3	92.6	1.7	94.5	2.6
	Feb	94.2	3.4	93.2	4.3	99.3	4.3	92.9	2.4	94.8	3.1
	Mar	94.7	3.5	93.4	3.9	99.7	4.6	93.6	2.9	95.4	3.5
	Apr	95.4	3.4	94.9	3.8	100.0	4.3	93.8	2.7	95.7	3.3
	May	95.6	3.5	95.0	3.7	100.2	4.3	94.0	2.9	95.9	3.4
	Jun	95.8	3.5	95.4	3.6	100.1	4.2	94.2	2.9	96.0	3.4
	Jul	95.9	3.4	95.6	3.7	99.9	3.8	94.4	3.0	96.1	3.3
	Aug	96.0	3.4	95.6	3.7	99.8	3.4	94.6	3.1	96.2	3.2
	Sept	96.1	3.2	95.9	3.5	99.2	2.6	94.7	3.1	96.1	3.0
	Oct	96.1	3.0	96.0	3.4	99.1	2.2	94.8	3.0	96.1	2.8
	Nov	96.2	2.9	95.9	3.4	98.9	1.6	95.2	3.1	96.4	2.7
	Dec	96.6	3.2	96.3	3.7	98.9	1.3	95.8	3.7	96.8	3.0
2018	Jan	97.0	3.1	96.7	3.9	99.3	0.5	96.1	3.8	97.1	2.8
	Feb	97.2	3.2	96.9	4.0	99.6	0.3	96.4	3.8	97.4	2.8
	Mar	97.4	2.8	97.1	4.0	99.8	0.1	96.5	3.1	97.5	2.2
	Apr	98.7	3.4	100.4	5.8	99.9	-0.1	96.7	3.1	97.7	2.1
	May	98.7	3.3	100.5	5.7	100.0	-0.2	96.8	3.0	97.7	2.0
	Jun	98.8	3.1	99.7	4.4	99.9	-0.2	97.5	3.6	98.2	2.4
	Jul	98.8	3.1	99.8	4.4	99.9	-0.1	97.6	3.4	98.3	2.3
	Aug	98.8	3.0	99.8	4.4	99.8	0.0	97.6	3.2	98.3	2.2
	Sept	98.9	2.9	100.0	4.3	99.8	0.6	97.5	2.9	98.2	2.1
	Oct	99.5	3.6	99.9	4.1	99.7	0.7	99.1	4.5	99.3	3.3
	Nov	99.9	3.8	99.9	4.2	99.9	1.0	99.9	4.9	99.9	3.7
	Dec	100.0	3.5	100.0	3.9	100.0	1.1	100.0	4.4	100.0	3.4
2019	Jan	100.3	3.5	100.2	3.6	100.8	1.5	100.3	4.4	100.4	3.4
	Feb	100.5	3.3	100.2	3.5	100.9	1.4	100.5	4.2	100.6	3.3
	Mar	100.6	3.3	100.3	3.3	101.3	1.5	100.6	4.2	100.7	3.3
	Apr	101.2	2.5	101.3	0.9	101.8	1.9	100.8	4.3	101.1	3.5
	May	101.3	2.6	101.3	0.8	102.3	2.4	101.0	4.4	101.4	3.7
	Jun	101.5	2.8	101.6	2.0	102.5	2.6	101.0	3.6	101.4	3.2
	Jul	101.7	2.9	101.8	2.0	102.7	2.9	101.2	3.7	101.6	3.4
% Change on last month		0.2		0.1		0.3		0.2		0.2	

Consumer Price Index- July 2019

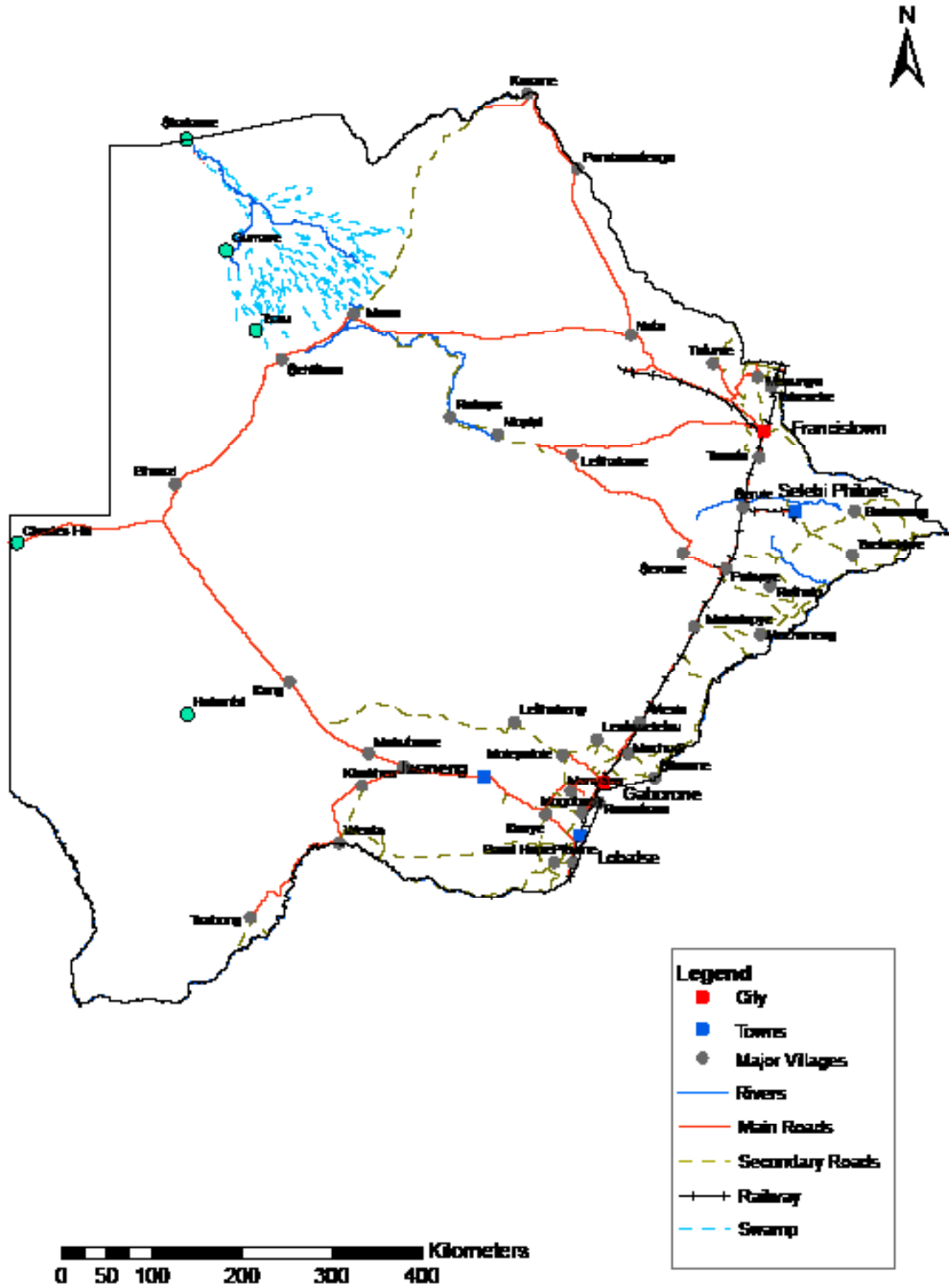
TABLE 4: CORE INFLATION RATES BY EXCLUSION AND TRIMMED MEAN

Year	Month	Consumer Price Index (Trimmed Mean) (September 2016 = 100)	Core Monthly Inflation Rate (Trimmed Mean) (percentage)	Consumer Price Index (Excluding Administered Prices) (September 2016 = 100)	Core Monthly Inflation (Excluding Administered Prices) (percentage)
2016	Jan	90.3	2.8	93.0	4.0
	Feb	90.5	2.6	93.2	3.7
	Mar	90.7	2.5	93.6	3.7
	Apr	91.2	2.4	94.4	3.9
	May	91.4	2.3	94.5	3.8
	Jun	91.4	2.4	94.7	3.6
	Jul	92.1	2.5	94.9	3.6
	Aug	92.3	2.4	95.1	3.6
	Sept	92.6	2.6	95.4	3.6
	Oct	92.8	2.2	95.6	3.4
	Nov	93.0	2.5	95.9	3.7
	Dec	93.1	2.5	96.0	3.7
2017	Jan	93.5	2.7	96.6	3.9
	Feb	93.7	2.9	96.9	3.9
	Mar	94.2	3.1	97.2	3.9
	Apr	94.4	3.1	97.5	3.3
	May	94.5	3.1	97.7	3.4
	Jun	94.8	2.9	97.9	3.3
	Jul	94.9	2.9	98.1	3.3
	Aug	95.0	2.9	98.2	3.3
	Sept	95.1	2.7	98.2	3.0
	Oct	95.2	2.6	98.2	2.8
	Nov	95.4	2.5	98.2	2.4
	Dec	95.8	2.9	98.2	2.3
2018	Jan	96.1	2.8	98.7	2.2
	Feb	96.4	2.9	99.0	2.2
	Mar	96.6	2.6	99.2	2.0
	Apr	97.6	3.1	99.4	1.9
	May	97.7	3.0	99.5	1.8
	Jun	98.6	3.2	99.6	1.8
	Jul	98.7	3.1	99.7	1.7
	Aug	98.7	3.0	99.7	1.6
	Sept	98.8	2.9	99.8	1.6
	Oct	99.5	3.7	99.8	1.6
	Nov	99.6	3.8	99.9	1.7
	Dec	100.0	3.6	100.0	1.8
2019	Jan	100.4	3.6	100.4	1.8
	Feb	100.5	3.5	100.6	1.6
	Mar	100.6	3.5	100.8	1.6
	Apr	101.3	2.6	101.0	1.7
	May	101.5	2.7	101.4	1.9
	Jun	101.2	2.5	101.6	2.0
	Jul	101.5	2.6	101.8	2.1

TABLE 5: AVERAGE ANNUAL INFLATION 2008 - 2018 (DECEMBER 2018=100)

	Group	Weights	2008	2009	2010	2011	2012	2013	2014	2015	2016	2017	2018
1	Food & Non-Alcoholic Beverages	13.55	20.2	14.7	3.6	6.9	8.0	5.4	3.0	1.3	2.7	3.4	(0.5)
2	Alcoholic Beverages & Tobacco	4.34	13.2	35.2	7.1	8.4	7.6	10.3	9.0	6.1	2.5	4.5	1.1
3	Clothing & Footwear	5.95	2.0	8.4	8.0	8.9	7.5	6.3	6.0	7.6	6.5	3.2	1.8
4	Housing, Water, Electr. Gas & Other Fuels	17.45	8.1	4.8	6.4	8.4	7.7	4.3	3.9	7.1	6.3	5.4	4.1
5	Furnishing, H/H Equipment & Routine Maintenance	4.85	6.0	11.9	9.4	9.0	7.3	4.9	5.0	6.1	3.0	3.3	2.1
6	Health	3.38	11.3	5.5	2.7	4.5	5.9	5.5	8.3	6.3	3.0	2.4	1.1
7	Transport	23.43	21.2	(8.4)	12.1	13.2	10.8	7.3	1.2	(5.1)	(2.7)	1.6	7.5
8	Communication	6.94	(0.3)	(0.3)	1.2	(3.0)	(1.4)	0.3	0.3	0.3	0.2	0.5	(4.6)
9	Recreation & Culture	2.82	2.3	5.0	6.0	8.3	5.8	4.5	4.2	5.7	3.0	2.2	1.8
10	Education	4.60	3.9	3.9	5.8	10.6	6.4	4.7	7.4	6.4	3.7	4.1	5.5
11	Restaurants & Hotels	3.66	12.7	18.8	9.0	9.3	8.4	7.9	7.6	5.5	4.0	3.7	3.4
12	Miscellaneous Goods & Services	9.01	4.9	3.8	7.0	5.3	2.0	1.2	5.2	7.2	7.5	3.9	6.4
	All-Items Index	100.0	12.6	8.2	6.9	8.5	7.5	5.9	4.4	3.1	2.8	3.3	3.2

CPI AREA COVERAGE



Compiled and Prepared by Statistics Botswana, 2016

GLOSSARY

Consumer Price Index (CPI) is an index which measures price changes in goods and services with reference to a base period.

Inflation is a measurement of prices movement of goods and services in a particular country.

Domestic Tradeables refers to the goods and services which a country (Botswana) can export to other countries.

Imported Tradeables represents the goods and services which a country (Botswana) imports from other countries (trading partners).

Non-Tradeables refers to the goods and services which a country cannot either export or import to other countries.

All –Tradeables refers to the total of **Domestic** and **Imported Tradeables**.

Trimmed Mean Core Inflation- attempts to remove 8 percent (by weight) of the commodity sub-groups with the largest price changes at each of the ends of an ordered series of price changes in any given month.

Core inflation by Exclusion is a measure used to remove the volatility inherent in prices that are only adjusted periodically and not always in response to currently prevailing market forces.