

STATISTICS BOTSWANA

Consumer Price Index

APRIL 2019



Contact Statistician:
Phaladi Labobedi

Statistics Botswana, Private Bag 0024 Gaborone Botswana

Tel: (+267) 367 1300. **Toll Free:** 0800 600 200 **Fax:** (+267) 395 2201. **Email:** info@statsbots.org.bw **Website:** www.statsbots.org.bw

CONTENTS

Section 1: HEADLINE INFLATION	1
Section 2: CORE INFLATION	1
GLOSSARY	11

CHARTS

CHART 1: NATIONAL RATES OF INFLATION	2
CHART 2: MONTHLY CHANGES IN THE CONSUMER PRICE INDEX	2
CHART 3: NON-TRADEABLES INFLATION RATES	2
CHART 4: TRADEABLES INFLATION RATES	2

TABLES

TABLE 1: CONSUMER PRICE INDEX (DECEMBER 2018 = 100.0)	3
TABLE 2: NATIONAL CONSUMER PRICE GROUP AND SECTION INDICES (DECEMBER 2018 = 100.0)	5
TABLE 3: CONSUMER PRICE INDEX BY TRADEABILITY (DECEMBER 2018 = 100.0)	7
TABLE 4: CORE INFLATION RATES BY EXCLUSION AND TRIMMED MEAN	8
TABLE 5: AVERAGE ANNUAL INFLATION (DECEMBER 2018 = 100.0)	9

COMMENTARY

SECTION 1: HEADLINE INFLATION

The annual inflation rate in April 2019 was 2.5 percent, registering a decrease of 0.8 of a percentage point on the March 2019 rate of 3.3 percent. The inflation rates for regions between March 2019 and April 2019 indicated that Cities & Towns declined from 3.9 percent to 2.9 percent, Urban Villages' went down from 3.2 percent to 2.6 percent while the Rural Villages' also dropped from 2.2 percent to 1.7 percent during the period under review.

The national Consumer Price Index moved to 101.2 in April 2019, registering a rise of 0.6 percent from 100.6, which was recorded in March 2019. The Cities & Towns advanced from 100.6 to 101.2 recording an increase of 0.6 percent. The Urban Villages' Index realised an increase of 0.6 percent, moving from 100.6 in March to 101.3 in April 2019. The Rural Villages index registered an increase of 0.5 percent, moving from 100.3 to 100.8 over the two periods.

Two group indices recorded changes of more than 1.0 percent between March and April, Miscellaneous Goods & Services (4.5 percent) and Alcoholic Beverages & Tobacco (1.4 percent).

The Miscellaneous Goods & Services group index moved from 100.4 to 104.9, recording an increase of 4.5 percent between March and April. This was mainly owed to the rise in the section index of Insurance, which recorded an increase of 11.0 percent.

The Alcoholic Beverages & Tobacco group index registered an increase of 1.4 percent, from 99.9 in March 2019 to 101.2 in April 2019. This was due to a general increase in the constituent section indices, notably Alcoholic Beverages (1.6 percent).

The Food & Non-Alcoholic Beverages group Index moved from 101.0 in March 2019 to 101.4 in April, recording an increase of 0.4 percent. The increase was credited to the general increase in section indices.

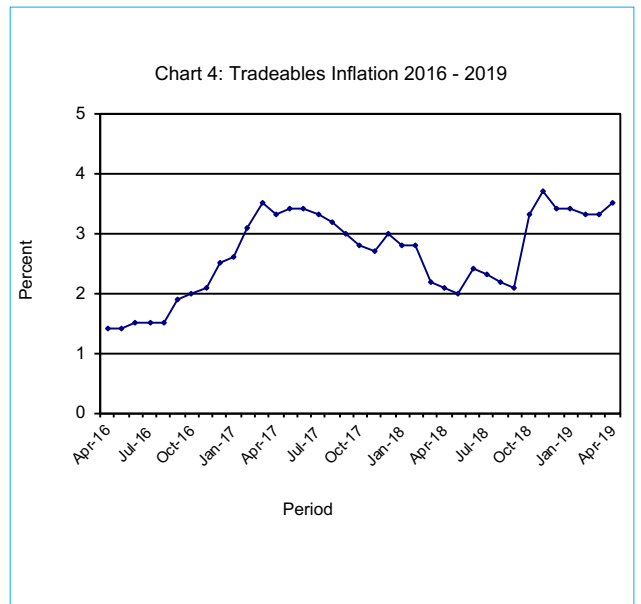
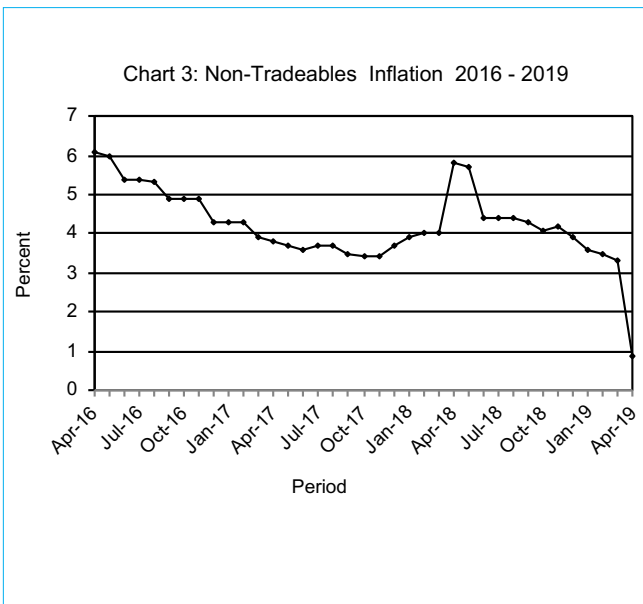
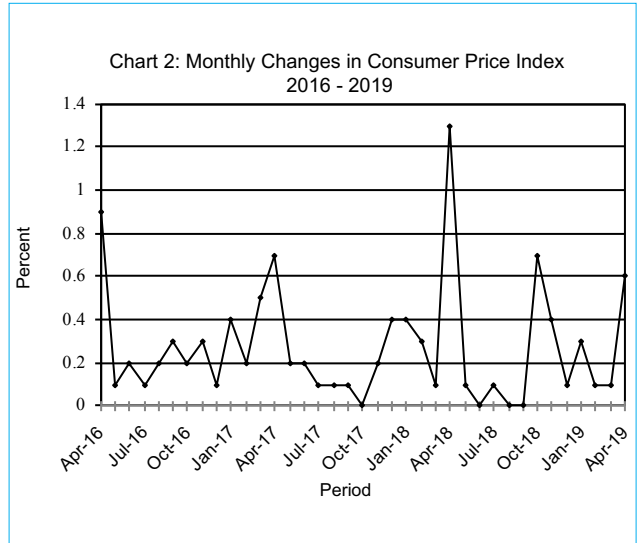
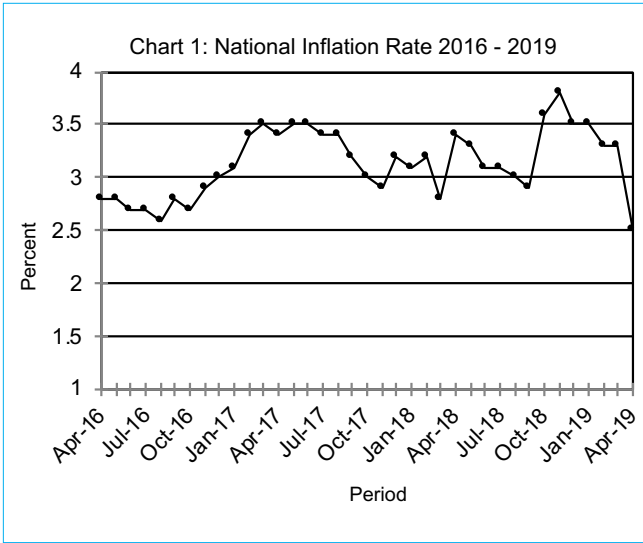
The *All-Tradeables index* advanced from 100.7 in March to 101.1 in April, registering a rise of 0.3 percent. The *Non-Tradeables Index* realized an increase of 1.0 percent, moving from 100.3 to 101.3 during the period under review. The *Domestic Tradeables Index* recorded an increase of 0.5 percent, moving from 101.3 in March to 101.8 in April 2019. The *Imported Tradeables Index*, moved from 100.6 in March to 100.8 in April 2019, recording an escalation of 0.3 percent.

All-Tradeables inflation rate was 3.5 percent in April 2019, registering an increase of 0.2 of a percentage point on the March 2019 rate of 3.3 percent. The *Non-Tradeables* inflation rate went down to 0.9 in April from 3.3 percent realized in March. The *Domestic Tradeables* inflation rate went up to 1.9 in April from 1.5 percent in March, while the *Imported Tradeables* inflation rate moved up from 4.2 percent in March to 4.3 percent in April.

SECTION 2: CORE INFLATION

The Trimmed Mean Core Inflation rate in April 2018 was 2.6 percent, a decrease of 0.9 of a percentage point on the March 2019 rate of 3.5 percent. The Core Inflation rate by exclusion registered an increase of 0.1 of a percentage point advancing from 1.6 percent in March to 1.7 percent in April.

CHARTS



Dr. Burton S. Mguni
Statistician General
 15th May 2019

TABLES

TABLE 1 : CONSUMER PRICE INDEX (DECEMBER 2018 =100.0)

		Food	Alcohol and Tobacco	Clothing and Footwear	Housing	Furniture etc	Health	Transport	Communi-cation	Rec. & Culture	Education	Rest. & Hotels	Miscel-laneous
Weights		13.55	4.34	5.95	17.45	4.85	3.38	23.43	6.94	2.82	4.60	3.66	9.01
2016	Jan	95.8	93.2	92.4	88.4	93.2	94.5	87.6	108.8	95.1	91.0	90.9	85.0
	Feb	96.3	93.4	93.0	88.3	93.3	94.6	86.4	108.8	95.6	91.0	91.2	84.7
	Mar	96.6	93.4	93.5	89.5	93.5	94.6	86.5	108.8	95.7	91.0	91.4	84.9
	Apr	97.4	93.9	94.0	89.5	93.6	94.9	86.6	108.8	95.8	91.0	91.7	90.4
	May	97.5	94.1	94.4	89.4	93.7	96.7	86.7	108.8	95.8	91.0	91.8	90.4
	Jun	97.2	94.2	94.9	90.2	94.2	96.8	87.0	108.8	95.8	91.0	92.2	90.7
	Jul	97.5	94.5	95.1	90.1	94.3	96.8	87.1	108.8	95.9	91.0	92.2	90.8
	Aug	97.8	94.6	95.3	90.2	94.5	96.8	87.1	108.8	96.0	91.0	92.5	90.8
	Sept	98.1	94.6	95.4	91.1	94.9	96.8	87.1	108.8	96.2	91.0	92.9	90.8
	Oct	98.5	95.2	95.6	91.1	95.0	96.8	87.1	108.8	96.3	91.0	93.1	91.2
	Nov	99.0	95.8	96.0	91.2	95.5	97.0	87.2	108.8	96.4	91.0	93.4	91.3
	Dec	99.1	95.8	96.1	91.3	95.7	97.1	87.3	108.8	96.4	91.0	93.5	91.3
2017	Jan	100.0	96.8	96.5	91.5	96.1	97.6	86.8	108.9	96.8	94.7	94.2	91.5
	Feb	100.4	97.4	96.8	91.6	96.5	97.7	87.0	108.9	97.2	94.7	94.4	91.7
	Mar	100.9	97.9	97.0	92.0	96.9	97.8	87.9	108.9	97.4	94.7	94.8	92.0
	Apr	101.1	98.5	97.2	95.5	97.0	97.9	88.0	108.9	98.1	94.7	95.0	92.2
	May	101.5	99.0	97.4	95.5	97.2	98.0	88.1	109.0	98.1	94.7	95.3	92.3
	Jun	101.4	99.0	97.5	95.7	97.4	98.6	88.3	109.2	98.2	94.8	95.5	93.2
	Jul	101.6	99.1	97.9	95.8	97.6	98.7	88.3	109.2	98.3	94.8	95.9	93.2
	Aug	101.5	99.2	98.1	95.8	97.7	98.8	88.5	109.2	98.4	94.8	96.2	93.2
	Sept	100.9	99.3	98.3	96.4	97.9	98.8	88.6	110.3	98.3	94.8	96.4	93.3
	Oct	100.8	99.1	98.4	96.3	98.0	98.8	88.6	110.3	98.4	94.9	96.6	93.4
	Nov	100.7	99.0	98.4	96.3	98.1	98.9	89.4	110.3	98.3	94.9	96.6	93.4
	Dec	100.2	99.1	98.5	96.7	97.9	98.9	90.9	110.1	98.5	94.9	97.1	93.9
2018	Jan	100.4	99.1	98.6	96.8	98.1	99.0	91.2	110.2	98.7	99.9	97.4	94.2
	Feb	100.8	99.2	98.7	96.9	98.4	99.1	91.5	110.2	99.0	99.9	97.8	94.7
	Mar	100.9	99.3	98.9	97.2	99.0	99.2	91.4	110.3	99.4	100.0	97.9	94.9
	Apr	101.0	99.2	99.3	98.6	99.1	99.2	93.5	110.3	100.0	100.0	98.4	100.0
	May	100.9	99.5	99.5	98.7	99.2	99.4	93.6	110.3	100.1	100.0	98.6	100.1
	Jun	100.7	99.7	99.6	99.2	99.5	99.4	95.0	100.2	100.1	100.0	99.0	100.2
	Jul	100.5	99.9	99.9	99.2	99.6	99.5	95.1	100.2	100.2	100.0	99.4	100.3
	Aug	100.2	100.1	99.8	99.3	99.6	99.5	95.2	100.2	100.2	100.0	99.5	100.3
	Sept	99.9	100.1	99.8	99.7	100.0	99.7	95.0	100.2	100.2	100.0	99.7	100.2
	Oct	99.8	100.2	99.7	99.7	100.0	99.8	98.4	100.2	99.8	100.0	99.7	99.8
	Nov	99.9	100.2	99.8	99.9	100.1	99.9	99.8	100.2	99.9	100.0	99.7	99.8
	Dec	100.0	100.0	100.0	100.0	100.0	100.0	100.0	100.0	100.0	100.0	100.0	100.0
2019	Jan	100.4	99.8	100.2	100.1	100.2	100.1	100.3	100.0	100.1	103.0	100.0	100.3
	Feb	100.6	99.6	100.2	100.1	100.4	100.2	100.6	100.0	100.1	103.1	100.1	100.6
	Mar	101.0	99.9	100.3	100.3	100.6	100.3	100.5	100.0	100.4	103.1	100.6	100.4
	Apr	101.4	101.2	100.4	100.3	100.7	100.3	100.7	100.0	100.2	103.1	100.8	104.9
% Change on													
Last month		0.4	1.4	0.1	0.0	0.1	0.1	0.2	0.0	(0.2)	0.0	0.2	4.5

Consumer Price Index- April 2019

TABLE 1: CONSUMER PRICE INDEX (Cont.)

		All Items Index	National Inflation Rate	Monthly Change	Towns & Cities Index	Urban Village Index	Rural Villages Index	Annual Inflation		
								Towns & Cities	Urban Villages	Rural Villages
		100.0	%	%	0.38	0.41	0.21	%	%	%
2016	Jan	91.2	2.7	0.4	90.3	91.8	91.8	2.7	2.6	2.8
	Feb	91.2	3.0	(0.0)	90.1	91.9	92.0	2.9	3.2	3.1
	Mar	91.5	3.0	0.3	90.5	92.2	92.1	3.1	3.2	2.7
	Apr	92.3	2.8	0.9	91.4	93.0	92.7	2.6	3.2	2.7
	May	92.4	2.8	0.1	91.5	93.1	92.9	2.7	3.1	2.5
	Jun	92.6	2.7	0.2	91.7	93.2	93.1	2.5	2.8	2.6
	Jul	92.7	2.7	0.1	91.8	93.3	93.6	2.5	2.7	3.0
	Aug	92.9	2.6	0.2	92.0	93.4	93.7	2.6	2.6	2.9
	Sept	93.1	2.8	0.3	92.3	93.5	93.9	2.8	2.7	2.9
	Oct	93.3	2.7	0.2	92.4	93.7	94.2	2.5	2.7	3.1
	Nov	93.5	2.9	0.3	92.6	93.9	94.6	2.7	2.9	3.5
	Dec	93.6	3.0	0.1	92.7	93.9	94.7	2.8	3.0	3.5
2017	Jan	94.0	3.1	0.4	93.1	94.3	95.1	3.1	2.8	3.6
	Feb	94.2	3.4	0.2	93.3	94.6	95.5	3.5	2.9	3.8
	Mar	94.7	3.5	0.5	93.8	95.0	95.9	3.6	3.0	4.2
	Apr	95.4	3.4	0.7	94.4	95.8	96.5	3.3	3.0	4.2
	May	95.6	3.5	0.2	94.6	96.0	96.8	3.4	3.1	4.1
	Jun	95.8	3.5	0.2	94.8	96.2	96.8	3.4	3.3	3.9
	Jul	95.9	3.4	0.1	95.0	96.3	97.0	3.5	3.2	3.7
	Aug	96.0	3.4	0.1	95.0	96.4	97.1	3.4	3.2	3.6
	Sept	96.1	3.2	0.1	95.2	96.3	97.2	3.2	3.0	3.4
	Oct	96.1	3.0	0.0	95.2	96.2	97.3	3.0	2.7	3.3
	Nov	96.2	2.9	0.2	95.5	96.4	97.4	3.1	2.6	3.0
	Dec	96.6	3.2	0.4	96.0	96.6	97.6	3.6	2.9	3.1
2018	Jan	97.0	3.1	0.4	96.4	97.0	97.8	3.6	2.9	2.8
	Feb	97.2	3.2	0.3	96.7	97.3	98.1	3.6	2.9	2.7
	Mar	97.4	2.8	0.1	96.8	97.5	98.1	3.3	2.6	2.3
	Apr	98.7	3.4	1.3	98.4	98.7	99.1	4.2	3.1	2.7
	May	98.7	3.3	0.1	98.5	98.8	99.1	4.1	3.0	2.5
	Jun	98.8	3.1	0.0	98.6	98.8	99.0	4.0	2.7	2.3
	Jul	98.8	3.1	0.1	98.7	98.9	99.1	3.9	2.7	2.1
	Aug	98.8	3.0	(0.0)	98.6	98.9	99.1	3.8	2.6	2.0
	Sept	98.9	2.9	0.0	98.7	98.9	99.1	3.6	2.7	2.0
	Oct	99.5	3.6	0.7	99.5	99.5	99.7	4.4	3.4	2.5
	Nov	99.9	3.8	0.4	99.9	99.8	100.0	4.7	3.6	2.6
	Dec	100.0	3.5	0.1	100.0	100.0	100.0	4.2	3.5	2.5
2019	Jan	100.3	3.5	0.3	100.4	100.3	100.2	4.1	3.4	2.4
	Feb	100.5	3.3	0.1	100.6	100.5	100.3	4.0	3.2	2.3
	Mar	100.6	3.3	0.1	100.6	100.6	100.3	3.9	3.2	2.2
	Apr	101.2	2.5	0.6	101.2	101.3	100.8	2.9	2.6	1.7
% Change on last month		0.6			0.6	0.6	0.5			

TABLE 2 : NATIONAL CONSUMER PRICE GROUP AND SECTION INDICES (DECEMBER 2018 = 100.0)

	Group Section	Weights	This month Apr 2019	Last month Mar 2019	3 months ago Jan 2019	6 months ago Oct 2018	12 months ago Apr 2018	Percentage Change on:			
								Last month	3 months ago	6 months ago	12 months ago
1	Food & Non-Alcoholic Beverages	13.55	101.4	101.0	100.4	99.8	101.0	0.4	1.0	1.7	0.4
1.1	Bread & Cereals	4.26	101.0	100.8	100.2	100.1	103.2	0.3	0.8	1.0	(2.1)
1.2	Meat (Fresh, Chilled & Frozen)	2.36	101.8	101.3	100.6	99.7	100.3	0.6	1.2	2.1	1.5
1.3	Fish (Fresh, Chilled & Frozen)	0.18	101.5	100.4	100.3	100.4	99.4	1.1	1.2	1.1	2.2
1.4	Milk, Cheese & Milk Products	0.98	101.0	100.3	100.1	99.9	97.9	0.8	1.0	1.1	3.3
1.5	Oils & Fats	0.92	100.2	99.9	99.9	100.8	101.4	0.3	0.4	(0.6)	(1.1)
1.6	Fruit	0.78	103.0	102.8	100.9	98.6	100.3	0.2	2.1	4.4	2.7
1.7	Vegetables	1.08	103.2	102.2	101.0	100.6	103.6	1.0	2.2	2.6	(0.3)
1.8	Sugar, Jam, Honey, Chocolate & Confectionery	1.11	99.7	100.0	100.1	97.5	98.9	(0.3)	(0.4)	2.2	0.8
1.9	Food not else where Classified	0.54	102.7	101.7	100.6	99.5	99.7	1.0	2.0	3.2	3.0
1.10	Coffee, Tea & Cocoa	0.73	101.4	100.9	100.7	99.3	97.7	0.5	0.7	2.1	3.8
1.11	Mineral Waters, Soft Drinks, Fruits & Vegetables Juices	0.62	101.9	101.5	100.5	100.2	98.7	0.4	1.4	1.7	3.3
2	Alcoholic Beverages & Tobacco	4.34	101.2	99.9	99.8	100.2	99.2	1.4	1.5	1.1	2.1
2.1	Alcoholic Beverages	3.51	101.1	99.5	99.6	100.2	99.3	1.6	1.5	0.9	1.8
2.2	Tobacco	0.82	101.9	101.3	100.3	100.1	98.9	0.6	1.6	1.8	3.0
3	Clothing & Footwear	5.95	100.4	100.3	100.2	99.7	99.3	0.1	0.2	0.7	1.1
3.1	Clothing	2.60	100.6	100.3	100.2	99.6	99.9	0.3	0.4	1.0	0.7
3.2	Other Articles of Clothing	0.72	100.4	100.4	100.4	100.0	99.3	0.0	0.0	0.4	1.1
3.3	Cleaning, Repair & Hire	0.61	100.3	100.3	100.0	99.5	96.9	0.0	0.3	0.8	3.5
3.4	Footwear	2.03	100.2	100.3	100.1	99.9	99.9	(0.1)	0.1	0.3	0.3
4	Housing, Water, Electr. Gas & Other Fuels	17.45	100.3	100.3	100.1	99.7	98.6	0.0	0.3	0.7	1.7
4.1	Rent Paid by Tenants	7.78	100.4	100.4	100.0	100.0	98.1	0.0	0.4	0.4	2.3
4.2	Materials for Maintenance & Repair of Dwellings	3.83	100.9	100.8	100.4	99.4	98.7	0.1	0.5	1.5	2.2
4.3	Water Supply & Miscellaneous Services	1.96	100.0	100.0	100.0	100.0	100.0	0.0	0.0	0.0	0.0
4.4	Electricity, Gas & Other Fuels	3.89	99.9	99.9	100.0	99.3	98.7	0.0	(0.0)	0.6	1.2
5	Furnishing, H/H Equipment & Routine Maintenance	4.85	100.7	100.6	100.2	100.0	99.1	0.1	0.5	0.7	1.6
5.1	Furniture & Furnishing	1.35	100.4	100.4	100.2	99.7	98.8	(0.0)	0.1	0.6	1.5
5.2	Carpets & Other Floor Coverings	0.27	100.2	100.3	100.2	99.6	98.7	(0.1)	0.0	0.5	1.5
5.3	Household Textiles	0.29	100.1	100.1	99.9	99.8	99.3	0.0	0.1	0.3	0.8
5.4	Household Appliances	0.72	100.1	100.3	100.1	100.0	99.9	(0.2)	0.1	0.1	0.2
5.5	Glassware, Tableware & Household Utensils	0.23	100.5	100.3	100.4	99.8	98.8	0.3	0.2	0.7	1.8
5.6	Small Tools, Miscellaneous Accessories	0.04	101.3	101.1	100.5	100.9	99.9	0.2	0.8	0.4	1.5
5.7	Goods & Services for Household Maintenance	1.95	101.4	101.1	100.3	100.2	99.1	0.3	1.0	1.2	2.3

TABLE 2 : NATIONAL CONSUMER PRICE GROUP AND SECTION INDICES (DECEMBER 2018 = 100.0) Cont'd

	Group Section	Weights	This month Apr 2019	Last month Mar 2019	3 months ago Jan 2019	6 months ago Oct 2018	12 months ago Apr 2018	Percentage Change on:			
								Last month	3 months ago	6 months ago	12 months ago
6	Health	3.38	100.3	100.3	100.1	99.8	99.2	0.1	0.2	0.5	1.1
6.1	Medical Products, Applications & Equipments	0.98	101.1	100.8	100.5	99.5	97.0	0.3	0.6	1.6	4.2
6.2	Out-patient Services	0.93	100.1	100.1	100.0	99.7	99.7	0.0	0.1	0.3	0.4
6.3	Hospital Services	1.47	100.0	100.0	100.0	100.0	100.0	0.0	0.0	0.0	0.0
7	Transport	23.43	100.7	100.5	100.3	98.4	93.5	0.2	0.4	2.4	7.6
7.1	Purchase of Vehicles	5.74	102.4	101.8	101.1	99.0	97.0	0.6	1.3	3.5	5.5
7.2	Operation of Personal Transport	12.56	100.1	100.1	100.0	97.5	89.8	0.0	0.1	2.7	11.5
7.3	Transport Services	5.13	100.1	100.0	100.0	100.0	100.0	0.1	0.1	0.1	0.1
8	Communication	6.94	100.0	100.0	100.0	100.2	110.3	0.0	0.0	(0.2)	(9.4)
8.1	Postal Services	0.21	100.0	100.0	100.0	100.0	100.0	0.0	0.0	0.0	0.0
8.2	Telephone & Telefax Equipment	1.13	100.0	100.0	100.0	101.0	100.8	0.0	0.0	(1.0)	(0.8)
8.3	Telephone & Telefax Services	5.60	100.0	100.0	100.0	100.0	113.2	0.0	0.0	(0.0)	(11.7)
9	Recreation & Culture	2.82	100.2	100.4	100.1	99.8	100.0	(0.2)	0.0	0.3	0.1
9.1	Audio Visual, Photographic & Information Processing Equipment	2.10	100.1	100.4	100.1	99.8	100.3	(0.3)	(0.0)	0.3	(0.2)
9.2	Other Recreational Items & Equipments	0.30	100.6	100.6	100.2	99.7	99.5	0.0	0.4	0.9	1.2
9.3	Recreational & Cultural Services	0.31	100.0	100.0	100.0	100.0	99.7	0.0	0.0	0.0	0.3
9.4	Newspapers, Books & Stationary	0.11	100.2	100.2	100.0	99.4	98.7	0.0	0.2	0.8	1.5
10	Education	4.60	103.1	103.1	103.0	100.0	100.0	0.0	0.1	3.1	3.1
10.1	Pre-Primary & Primary Education	1.89	103.3	103.3	103.0	100.0	99.9	0.0	0.3	3.3	3.4
10.2	Secondary & Tertiary Education	2.70	102.9	102.9	102.9	100.0	100.0	0.0	0.0	2.9	3.0
11	Restaurants & Hotels	3.66	100.8	100.6	100.0	99.7	98.4	0.2	0.8	1.1	2.5
11.1	Restaurants, Cafes and the Like	3.02	100.8	100.7	100.0	99.6	98.5	0.1	0.8	1.1	2.3
11.2	Accommodation Services	0.64	101.0	100.4	100.2	100.0	97.6	0.6	0.7	1.0	3.5
12	Miscellaneous Goods & Services	9.01	104.9	100.4	100.3	99.8	100.0	4.5	4.6	5.1	4.9
12.1	Personal Care	2.33	100.9	100.6	100.5	100.1	99.5	0.3	0.3	0.8	1.3
12.2	Personal Effects Not Elsewhere Classified	0.22	100.2	100.1	100.0	99.7	100.1	0.0	0.1	0.5	0.0
12.3	Social Protection	0.13	101.6	101.6	101.6	100.0	100.0	0.0	0.0	1.6	1.6
12.4	Insurance	3.62	111.4	100.4	100.2	99.7	100.4	11.0	11.1	11.7	10.9
12.5	Financial Services	1.09	100.3	100.3	100.0	99.0	97.7	0.1	0.3	1.3	2.8
12.6	Taxes, Licences & Fees	1.61	100.1	100.0	100.0	100.0	100.1	0.1	0.1	0.1	(0.1)
	All-Items Index	100.0	101.2	100.6	100.3	99.5	98.7	0.6	0.8	1.7	2.5

TABLE 3: CONSUMER PRICE INDEX BY TRADABILITY (DECEMBER 2018 = 100.0)

	All Items		Non-Tradeables		Domestic Tradeables		Imported Tradeables		All Tradeables		
	Index	Inflation	Index	Inflation	Index	Inflation	Index	Inflation	Index	Inflation	
Weights	100.00		42.29		15.46		42.26		57.71		
2016	Jan	91.2	2.7	89.3	7.3	94.7	2.6	91.0	-0.3	92.0	0.8
	Feb	91.2	3.0	89.3	7.0	95.1	2.5	90.7	0.7	92.0	1.4
	Mar	91.5	3.0	89.8	7.3	95.3	2.1	91.0	0.8	92.2	1.3
	Apr	92.3	2.8	91.5	6.1	95.9	2.3	91.3	0.9	92.6	1.4
	May	92.4	2.8	91.7	6.0	96.1	2.5	91.4	0.8	92.7	1.4
	Jun	92.6	2.7	92.1	5.4	96.0	2.5	91.5	0.9	92.8	1.5
	Jul	92.7	2.7	92.2	5.4	96.2	2.8	91.6	0.7	93.0	1.5
	Aug	92.9	2.6	92.2	5.3	96.6	3.0	91.7	0.6	93.2	1.5
	Sept	93.1	2.8	92.7	4.9	96.7	3.5	91.9	0.9	93.3	1.9
	Oct	93.3	2.7	92.8	4.9	97.0	3.1	92.1	0.9	93.5	1.9
	Nov	93.5	2.9	92.8	4.9	97.4	3.4	92.4	1.2	93.9	2.1
	Dec	93.6	3.0	92.8	4.3	97.6	3.6	92.4	1.8	94.0	2.5
2017	Jan	94.0	3.1	93.1	4.3	98.8	4.3	92.6	1.7	94.5	2.6
	Feb	94.2	3.4	93.2	4.3	99.3	4.3	92.9	2.4	94.8	3.1
	Mar	94.7	3.5	93.4	3.9	99.7	4.6	93.6	2.9	95.4	3.5
	Apr	95.4	3.4	94.9	3.8	100.0	4.3	93.8	2.7	95.7	3.3
	May	95.6	3.5	95.0	3.7	100.2	4.3	94.0	2.9	95.9	3.4
	Jun	95.8	3.5	95.4	3.6	100.1	4.2	94.2	2.9	96.0	3.4
	Jul	95.9	3.4	95.6	3.7	99.9	3.8	94.4	3.0	96.1	3.3
	Aug	96.0	3.4	95.6	3.7	99.8	3.4	94.6	3.1	96.2	3.2
	Sept	96.1	3.2	95.9	3.5	99.2	2.6	94.7	3.1	96.1	3.0
	Oct	96.1	3.0	96.0	3.4	99.1	2.2	94.8	3.0	96.1	2.8
	Nov	96.2	2.9	95.9	3.4	98.9	1.6	95.2	3.1	96.4	2.7
	Dec	96.6	3.2	96.3	3.7	98.9	1.3	95.8	3.7	96.8	3.0
2018	Jan	97.0	3.1	96.7	3.9	99.3	0.5	96.1	3.8	97.1	2.8
	Feb	97.2	3.2	96.9	4.0	99.6	0.3	96.4	3.8	97.4	2.8
	Mar	97.4	2.8	97.1	4.0	99.8	0.1	96.5	3.1	97.5	2.2
	Apr	98.7	3.4	100.4	5.8	99.9	-0.1	96.7	3.1	97.7	2.1
	May	98.7	3.3	100.5	5.7	100.0	-0.2	96.8	3.0	97.7	2.0
	Jun	98.8	3.1	99.7	4.4	99.9	-0.2	97.5	3.6	98.2	2.4
	Jul	98.8	3.1	99.8	4.4	99.9	-0.1	97.6	3.4	98.3	2.3
	Aug	98.8	3.0	99.8	4.4	99.8	0.0	97.6	3.2	98.3	2.2
	Sept	98.9	2.9	100.0	4.3	99.8	0.6	97.5	2.9	98.2	2.1
	Oct	99.5	3.6	99.9	4.1	99.7	0.7	99.1	4.5	99.3	3.3
	Nov	99.9	3.8	99.9	4.2	99.9	1.0	99.9	4.9	99.9	3.7
	Dec	100.0	3.5	100.0	3.9	100.0	1.1	100.0	4.4	100.0	3.4
2019	Jan	100.3	3.5	100.2	3.6	100.8	1.5	100.3	4.4	100.4	3.4
	Feb	100.5	3.3	100.2	3.5	100.9	1.4	100.5	4.2	100.6	3.3
	Mar	100.6	3.3	100.3	3.3	101.3	1.5	100.6	4.2	100.7	3.3
	Apr	101.2	2.5	101.3	0.9	101.8	1.9	100.8	4.3	101.1	3.5
% Change on last month		0.6		1.0		0.5		0.3		0.3	

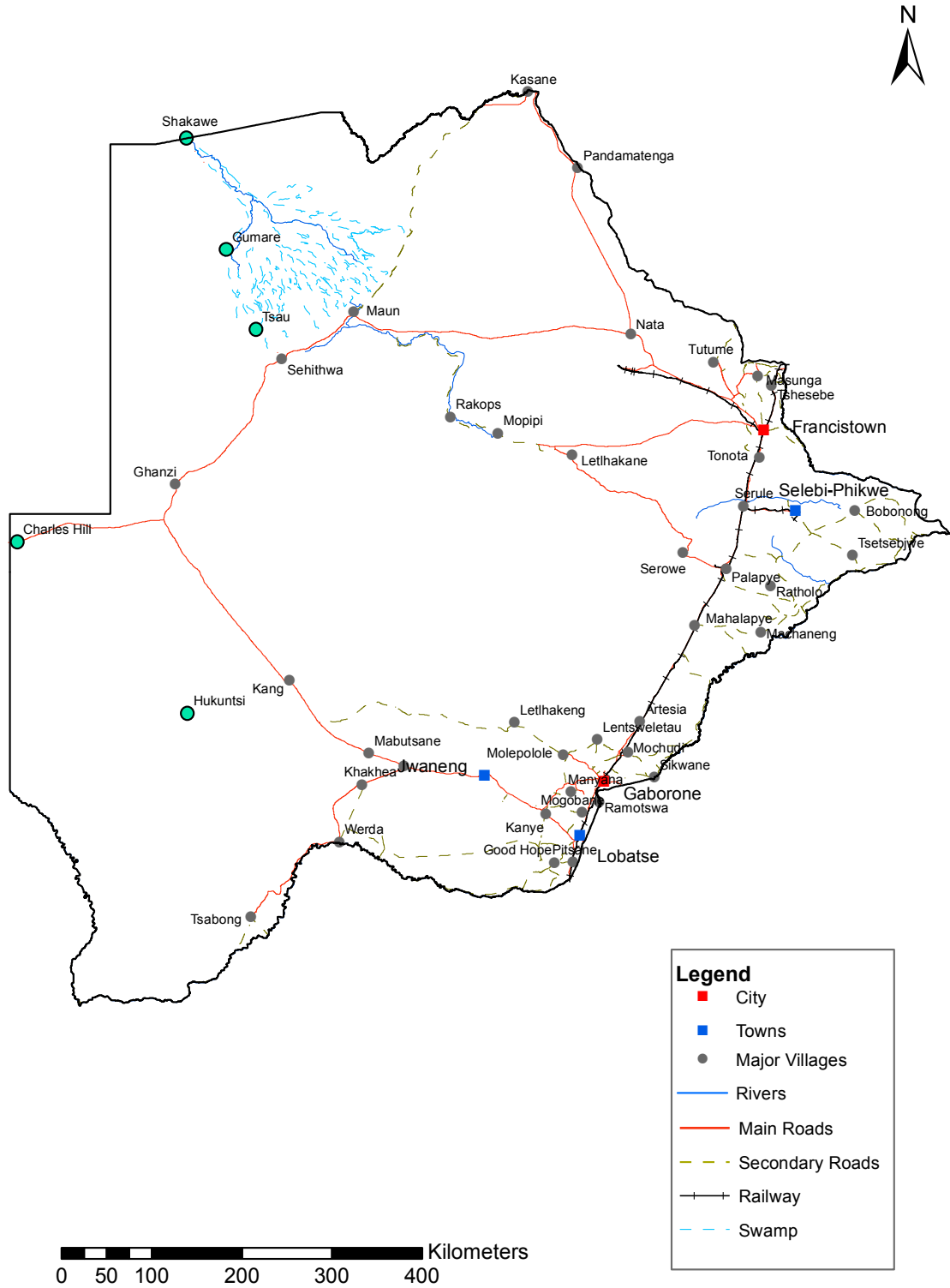
TABLE 4: CORE INFLATION RATES BY EXCLUSION AND TRIMMED MEAN

Year	Month	Consumer Price Index (Trimmed Mean) (September 2016 = 100)	Core Monthly Inflation Rate (Trimmed Mean) (percentage)	Consumer Price Index (Excluding Administered Prices) (September 2016 = 100)	Core Monthly Inflation (Excluding Administered Prices) (percentage)
2016					
	Jan	90.3	2.8	93.0	4.0
	Feb	90.5	2.6	93.2	3.7
	Mar	90.7	2.5	93.6	3.7
	Apr	91.2	2.4	94.4	3.9
	May	91.4	2.3	94.5	3.8
	Jun	91.4	2.4	94.7	3.6
	Jul	92.1	2.5	94.9	3.6
	Aug	92.3	2.4	95.1	3.6
	Sept	92.6	2.6	95.4	3.6
	Oct	92.8	2.2	95.6	3.4
	Nov	93.0	2.5	95.9	3.7
	Dec	93.1	2.5	96.0	3.7
2017					
	Jan	93.5	2.7	96.6	3.9
	Feb	93.7	2.9	96.9	3.9
	Mar	94.2	3.1	97.2	3.9
	Apr	94.4	3.1	97.5	3.3
	May	94.5	3.1	97.7	3.4
	Jun	94.8	2.9	97.9	3.3
	Jul	94.9	2.9	98.1	3.3
	Aug	95.0	2.9	98.2	3.3
	Sept	95.1	2.7	98.2	3.0
	Oct	95.2	2.6	98.2	2.8
	Nov	95.4	2.5	98.2	2.4
	Dec	95.8	2.9	98.2	2.3
2018					
	Jan	96.1	2.8	98.7	2.2
	Feb	96.4	2.9	99.0	2.2
	Mar	96.6	2.6	99.2	2.0
	Apr	97.6	3.1	99.4	1.9
	May	97.7	3.0	99.5	1.8
	Jun	98.6	3.2	99.6	1.8
	Jul	98.7	3.1	99.7	1.7
	Aug	98.7	3.0	99.7	1.6
	Sept	98.8	2.9	99.8	1.6
	Oct	99.5	3.7	99.8	1.6
	Nov	99.6	3.8	99.9	1.7
	Dec	100.0	3.6	100.0	1.8
2019					
	Jan	100.4	3.6	100.4	1.8
	Feb	100.5	3.5	100.6	1.6
	Mar	100.6	3.5	100.8	1.6
	Apr	101.3	2.6	101.0	1.7

TABLE 5: AVERAGE ANNUAL INFLATION (DECEMBER 2018 = 100.0)

	Group	Weights	YEAR										
			2008	2009	2010	2011	2012	2013	2014	2015	2016	2017	2018
1	Food & Non-Alcoholic Beverages	13.55	20.2	14.7	3.6	6.9	8.0	5.4	3.0	1.3	2.7	3.4	(0.5)
2	Alcoholic Beverages, Tobacco & Narcotics	4.34	13.2	35.2	7.1	8.4	7.6	10.3	9.0	6.1	2.5	4.5	1.1
3	Clothing and Footwear	5.95	2.0	8.4	8.0	8.9	7.5	6.3	6.0	7.6	6.5	3.2	1.8
4	Housing, Water, Electr. Gas & Other Fuels	17.45	8.1	4.8	6.4	8.4	7.7	4.3	3.9	7.1	6.3	5.4	4.1
5	Furnishing, H/H Equipment & Routine Maintenance	4.85	6.0	11.9	9.4	9.0	7.3	4.9	5.0	6.1	3.0	3.3	2.1
6	Health	3.38	11.3	5.5	2.7	4.5	5.9	5.5	8.3	6.3	3.0	2.4	1.1
7	Transport	23.43	21.2	(8.4)	12.1	13.2	10.8	7.3	1.2	(5.1)	(2.7)	1.6	7.5
8	Communication	6.94	(0.3)	(0.3)	1.2	(3.0)	(1.4)	0.3	0.3	0.3	0.2	0.5	(4.6)
9	Recreation & Culture	2.82	2.3	5.0	6.0	8.3	5.8	4.5	4.2	5.7	3.0	2.2	1.8
10	Education	4.60	3.9	3.9	5.8	10.6	6.4	4.7	7.4	6.4	3.7	4.1	5.5
11	Restaurants & Hotels	3.66	12.7	18.8	9.0	9.3	8.4	7.9	7.6	5.5	4.0	3.7	3.4
12	Miscellaneous Goods & Services	9.01	4.9	3.8	7.0	5.3	2.0	1.2	5.2	7.2	7.5	3.9	6.4
All-Items Index		100.0	12.6	8.2	6.9	8.5	7.5	5.9	4.4	3.1	2.8	3.3	3.2

CPI AREA COVERAGE



Compiled and Prepared by Statistics Botswana, 2016

GLOSSARY

Consumer Price Index (CPI) is an index which measures price changes in goods and services with reference to a base period.

Inflation is a measurement of prices movement of goods and services in a particular country.

Domestic Tradeables refers to the goods and services which a country (Botswana) can export to other countries.

Imported Tradeables represents the goods and services which a country (Botswana) imports from other countries (trading partners).

Non-Tradeables refers to the goods and services which a country cannot either export to or import from other countries.

All –Tradeables refers to the total of **Domestic** and **Imported Tradeables** .

Trimmed Mean Core Inflation- attempts to remove 8 percent (by weight) of the commodity sub-groups price changes at each of the ends of an ordered series of price changes in any given month.

Core inflation by Exclusion is a measure used to remove the volatility inherent in prices that are only adjusted periodically and not always in response to currently prevailing market forces.