

CRIME STATISTICS REPORT 2010

STATISTICS BOTSWANA

Copyrights © Statistics Botswana 2014

Statistics Botswana. Private Bag 0024 Botswana
Tel: (267) 367 1300. **Fax:** (267) 395 2201. **Email:** csobots.@gov.bw **Website:** www.cso.gov.bw

CRIME STATISTICS REPORT 2010

Published by

Statistics Botswana
Private bag 0024, Gaborone
Website: www.cso.gov.bw
E-mail: csobots@gov.bw

Contact: Crime, Civil and Vital Section
Tel: (267) 3934968
Fax: (267) 3952201
(267) 3935628

March 2014

COPYRIGHT RESERVED
Extracts may be published if source
is duly acknowledged

Preface

This report provides findings of the 2010 decided criminal cases from all twenty (20) Magistrates Courts in the Country. The production of this report is a response to the demand from the Government, the private sector and the public at large for information related to crime in the country.

The analysis is only focused on decided criminal cases and as such excludes pending cases. The crime classification used, was adopted from the Irish Crime classification and adapted to Botswana situation. To prepare this report the data collected went through coding, entry, cleaning and finally, analysis and report writing.

This report consists of an introductory background followed by commentary on the findings, conclusion and appendices detailing discussed tables.

The analysis of offence categories were classified into broader Crime Classifications which are as follows; Homicide, Sexual, Threat to murder, Dangerous or Negligent Acts, Kidnapping, Robbery, Burglary, Theft and related offences, Fraud, Controlled Drugs, Weapons and Explosives, Damage to Property, Public Order and other Social Code, Road and Traffic, Offences Against Government and Justice Procedures and then Offences Not Elsewhere Classified category.

I would like to acknowledge and appreciate the contributions of the Administration of Justice, the High Court in Lobatse and Gaborone for providing the Magisterial Criminal Cases Returns and I would also like to extend my appreciation to all the Magistrate Courts in Botswana for their consistency and continuous submission of monthly Criminal Cases forms.

Statistics Botswana intends to improve on timeliness of this report; however comments and feedback on quality and presentation of information are most welcome.



.....
A. N. Majelantle
Statistician General
March 2014

Table of Contents

Preface	3
List of Tables	5
List of Charts	6
1.0 Introduction	7
2.0 Discussion of Findings	8
2.1 Decided Cases by Months	8
2.2 Trend of total accused, 2005-2010	8
2.3 Accused by Sex and Age	9
2.4 Offences Committed	9
2.5 Accused by Age	10
2.5 Verdicts	12
3.0 Conclusion	13
Appendix A	14
Appendix B	25

List of Tables

Table 1: Percentage Distribution of Offences by Age Group of Accused, 2010.....	11
Table A1: Percentage Distribution of Decided Cases per Accused by Magisterial Courts, 2010.....	14
Table A2: Total Number of Accused by Magisterial Courts, 2004 -2010.....	14
Table A3: Number of Decided Cases by Magisterial Court and Month, 2010.....	15
Table A4: Number of Accused by Magisterial Court, Sex and Age, 2010.....	15
Table A5: Total Number of Offences by Magisterial Court and Sex of Accused, 2010.....	18
Table A6: Total Number of Offences by Sex and Age of Accused, 2010.....	20
Table A7: Number of Offences by Verdict and Sex of Accused, 2010.....	22
Table A8: Trend of Number of Offences per Accused by Year 2004-2010.....	24

List of Charts

Chart 1: Percentage Distribution of Decided Criminal Cases by Month, 2010.....	8
Chart 2: Trend Distribution of Accused during 2005- 2010.....	8
Chart 3: Percentage Distribution of Accused by Sex and Age Group, 2010.....	9
Chart 4: Percentage Distribution of Offences Committed, 2010.....	10
Chart 5: Percentage Distribution of Accused by Age, 2010.....	10
Chart 6: Percentage Distribution of Offences by Verdict and sex of the Accused, 2010.....	12

1.0 Introduction

This report mainly focuses on recorded and decided (completed) criminal cases in Botswana for the year 2010 from all twenty (20) Magistrates Courts in the country. It is the fourth report produced by Statistics Botswana relating to different reported criminal occurrences in the country. Statistics Botswana analyses crime data extracted from the High Court Records which is then coded and analyzed by the Crime, Civil and Vital Statistics Unit, to produce yearly reports on crime statistics.

Magisterial Courts are categorized into two regions as follows;

1. Southern region which comprises Broadhurst Magisterial Court, Village, Extension II, Lobatse, Jwaneng, Mochudi, Kanye, Molepolole, Tsabong, and Gantsi Magisterial Courts.
2. Northern region includes Francistown Magisterial Court, Selibe-Phikwe, Mahalapye, Serowe, Palapye, Letlhakane, Masunga, Maun and Kasane Magisterial Courts.

It is important to note that since decided criminal cases reported at the Magisterial Courts are used in the production of this report, some cases may have been given a hearing but still pending outcome due to different reasons and as such are not included in this analysis. Magistrate courts also attend to civil cases which are also not included in this analysis. There are several types of criminal cases reported at the Magisterial Courts with a number of different offences. These offences have been classified into broad categories namely, Homicide, Sexual, Threat to murder, Dangerous or Negligent Acts, Kidnapping, Robbery, Burglary, Theft & related offences, Fraud, Controlled Drugs, Weapons & Explosives, Damage to Property, Public Order & other Social Code, Road & Traffic, Offences Against Government & Justice Procedures and then Offences Not Elsewhere Classified category. This broad classification was adopted from the Irish Crime Classification and adapted to Botswana criminal offences scenario. In the past reports a nine (9) group offence categorization was used to analyze crime data, this 2010 report however, as mentioned above employs a broader sixteen (16) offence group categorization as was with the 2009 report. The broader offence group categorization is used because analysis has shown that as years pass, total number of offences committed increase and most importantly the crimes that in the past recorded least numbers like sexual related offences by females and weapon and explosives related offences. The numbers have become significant and hence the need to look into them closely.

A Principal Offence Rule was not applied when analyzing the data and instead all offences committed by the accused were recorded, as such the number of accused is likely to be less than offences committed. Principal Offence Rule means that if a person commits more than one offence simultaneously, he is recorded only for most serious offence and in that case the number of accused will always be equal to the number of offences committed.

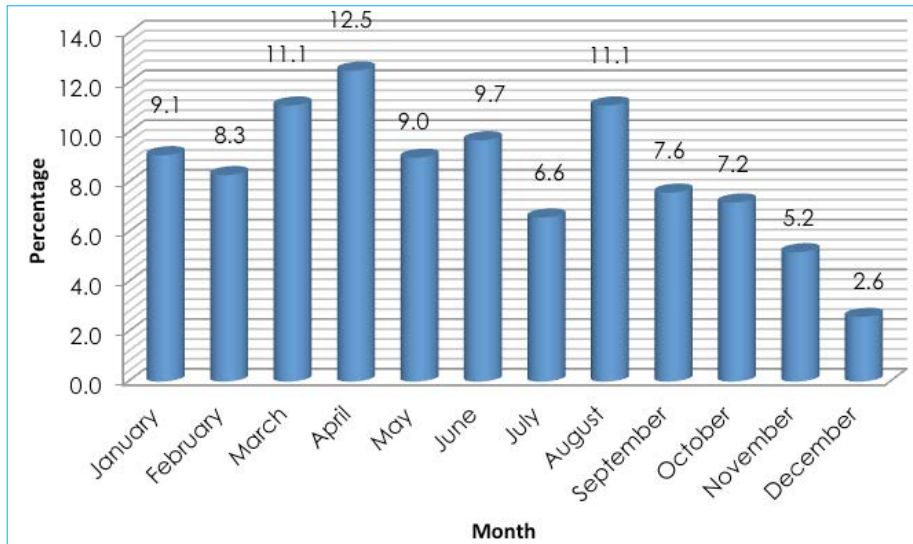
Analysis of crime in the country is of great importance because it provides information for adequate planning, implementation and monitoring of viable policies and programs to curb crime. Statistics on crime also help Government and other stakeholders to evaluate trends on societal well-being, hence the significance of this report.

2.0 Discussion of Findings

2.1 Decided Cases by Months

The results show that there were 4,827 decided cases in 2010 from all the 20 Magisterial Courts in the country. It should, however, be noted that not all decided cases were registered in 2010 but some had been brought forward from previous years and concluded or decided by the courts in the year 2010. The highest proportion of cases in 2010 was concluded in April accounting for 12.5 percent of all the decided cases, and the lowest proportion was recorded in December with 2.6 percent (See Chart 1). Of all the cases recorded, Extension II Magistrate Court had the highest number of criminal cases completed (436) followed slightly behind by Lobatse Magistrate Court (435) while the least (26) were completed in Ghanzi Magistrate Court (See Table A3).

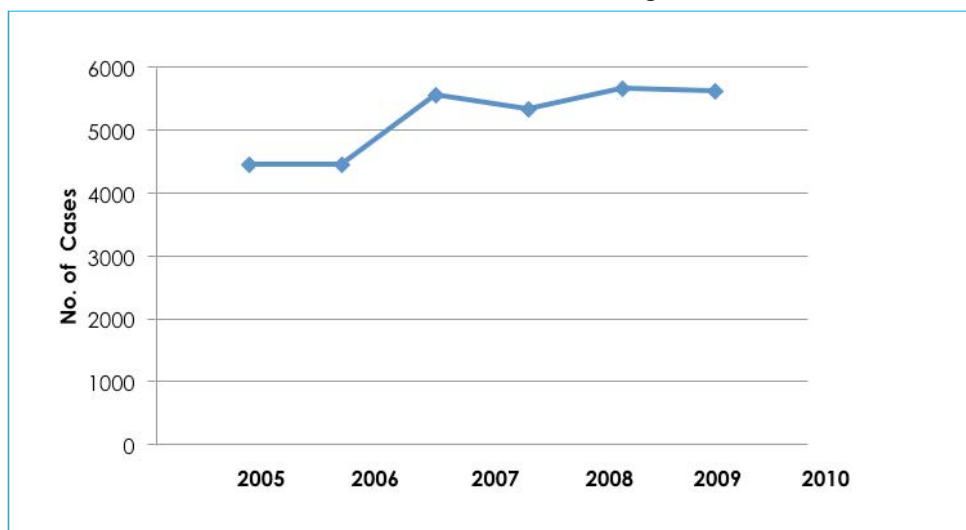
Chart 1: Percentage Distribution of Decided Criminal Cases by Month, 2010



2.2 Trend of total accused, 2005-2010

Chart 2, shows the trend of number of accused from 2005 to 2010. Generally, as per findings of this report, there was an upward trend in the number of people who committed offences implying that, the number of people who got involved in criminal activities had increased. Between 2005 and 2010 there was an increase in number of people accused, from 4,474 in 2005 to 5,645 in 2010. Table 8 shows that about 80.2 percent of the cases were completed within less than 12 months of registration with the courts while the remaining 19.8 percent took more than a year to complete or decide.

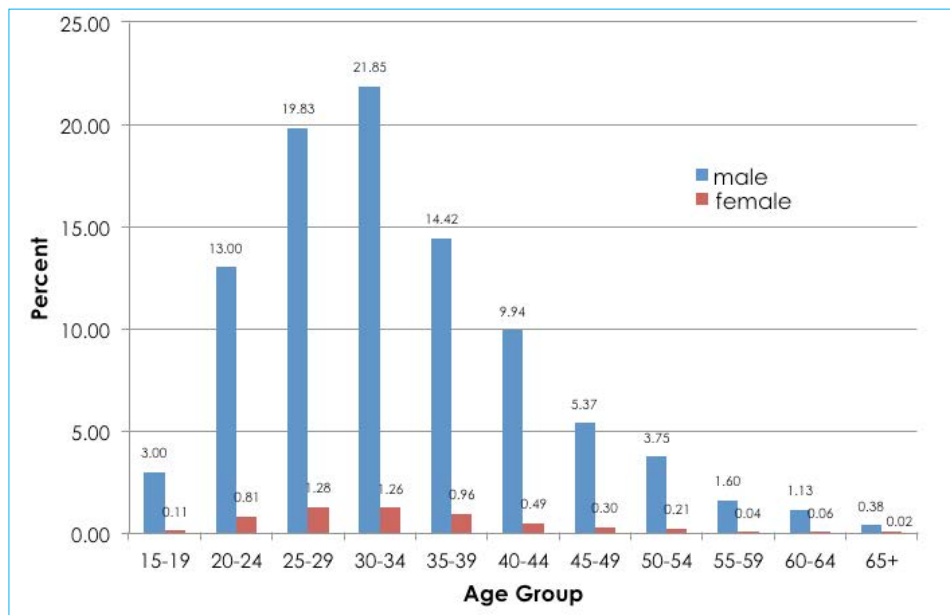
Chart 2: Trend Distribution of Accused during 2005- 2010



2.3 Accused by Sex and Age

The results show that female participation in criminal acts was low as compared to their male counterparts. In the year under review, males constituted a massive 94.2 percent of the accused while females constituted only 5.8 percent and throughout all the age groups males recorded were more than females. The highest number of males recorded was in the age group 30-34 (21.85 percent of overall) while the highest number of females recorded was in the age group 25-29 (1.28 per annum of overall). Involvement in crime started at an early age as evidenced by the significant amount of about 3.11 percent of accused in the age group 15-19 where 3 percent were males and 0.11 per cent were females. Additionally, the highest records for both males and females were seen among the youth while adults on the other hand recorded relatively lower number of accused suggesting that as age increased, participation in criminal activities decreased (See Chart 3).

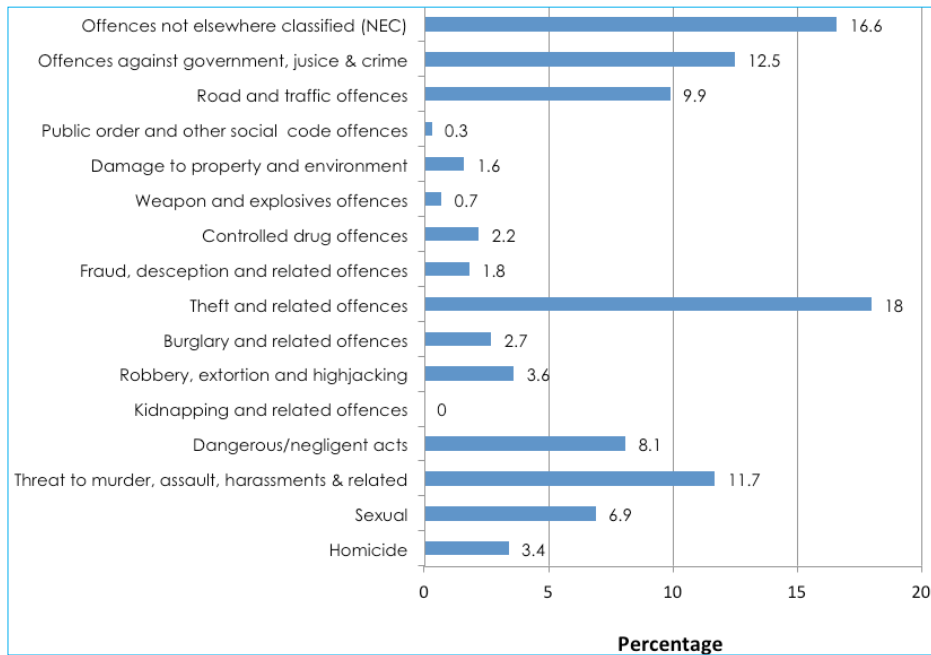
Chart 3: Percentage Distribution of Accused by Sex and Age Group, 2010



2.4 Offences Committed

This report, as mentioned earlier, did not use the Principal Offence Rule and as such total number of offences might exceed total number of accused since all offences committed per person were recorded. As expected, the findings of the report revealed that total number of offences recorded from the cases decided in 2010 stood at 6,567 as opposed to 5,645 of the total accused persons (see table A6). Chart 4 below shows that theft was the most common offence committed as it constituted the highest proportion, 18 percent, of all the offences committed. It included theft of vehicles, stealing from a dwelling or person, interfering with postal matter and stealing goods in transit as well as handling stolen property. Offences against Government, justice and crime organizations was second with 12.5 percent contribution to total offences committed. Sexual offences accounted for 6.9 percent of all the offences and for the year 2010, no kidnapping case was decided.

Chart 4: Percentage Distribution of Offences Committed, 2010



2.5 Accused by Age

Unemployment among the youth might be seen to be a contributory factor to the increase in criminal activities within this age group. The association of youth unemployment and crime are not causal and mechanistic i.e. not all unemployed young people will automatically engage in these activities. Botswana has introduced programmes to empower youth by creating employment opportunities, instill the spirit of entrepreneurship and innovation to improve the livelihoods of the youth which will ultimately help minimize their participation in criminal activities.

The trends showed that, even though in relative terms youth participation in criminal activities was still high, there were signs that it had been decreasing over the years under review. Youth participation in criminal activities had decreased between 2005 and 2010 as depicted by Chart 5 below. The major contributory factor to this decrease may be Government initiatives to improve the livelihoods of this group.

Chart 5: Percentage Distribution of Accused by Age, 2005-2010

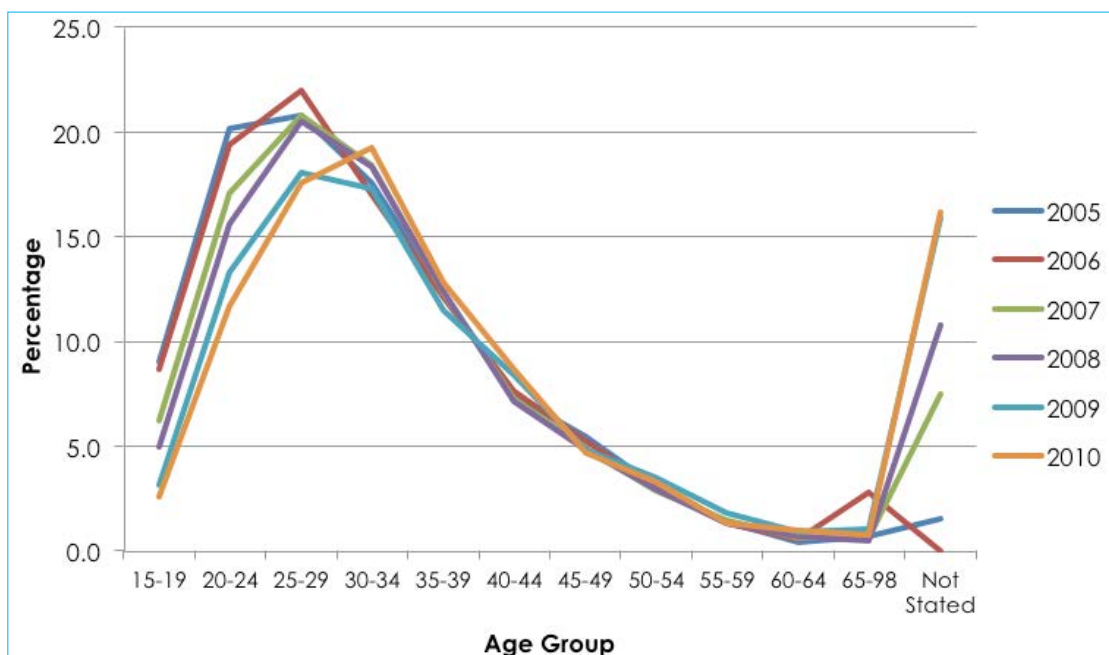


Table 1 shows percentage distribution of offences by age of accused persons involved. Distribution reveals that youths were leading in different types of crimes with the age group 30-34 leading at 19.8 percent of total offences recorded. About 21.4 percent of those involved in homicide were in the age group 25- 29, followed by age group 30-34 with 16.4 percent and then age group 20-24 with 12.3 percent. The least recorded age group involved in homicide was 60-64 with 0.9 percent. Among offenders who were accused of sexual offences, 25.8 percent were aged 25-29 followed by age group 20-24 with 23.6 percent. Of those accused of threat to murder and assault, age group 30-34 contributed the highest proportion with 23.0 percent followed by age group 25-29 and 35-39 with 17.2 and 17.0 percent respectively.

Sexual offences was the commonest form of offence among the age group 15-19 as it contributed 9.5 percent of offences within this group. In addition, this age group contributed about 4.1 percent of Theft and related offences, and 2.8 percent of all offences recorded. Of all the 185 offences committed by the age group 15-19, theft and related offences recorded the highest number (48) followed by Sexual offences (43). No fraud, deception and related offences cases was recorded among this age group(see Table A6).

Table 1: Percentage Distribution of Offences by Age Group of Accused, 2010

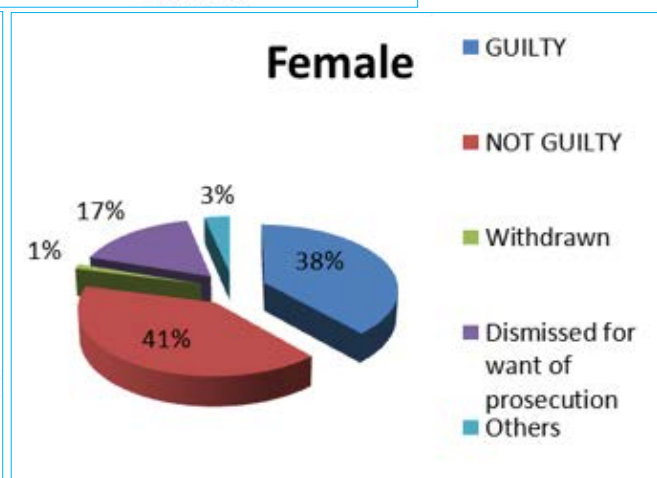
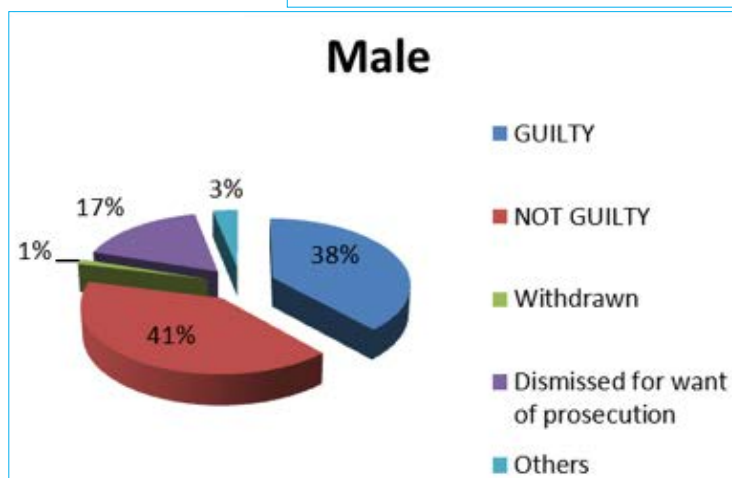
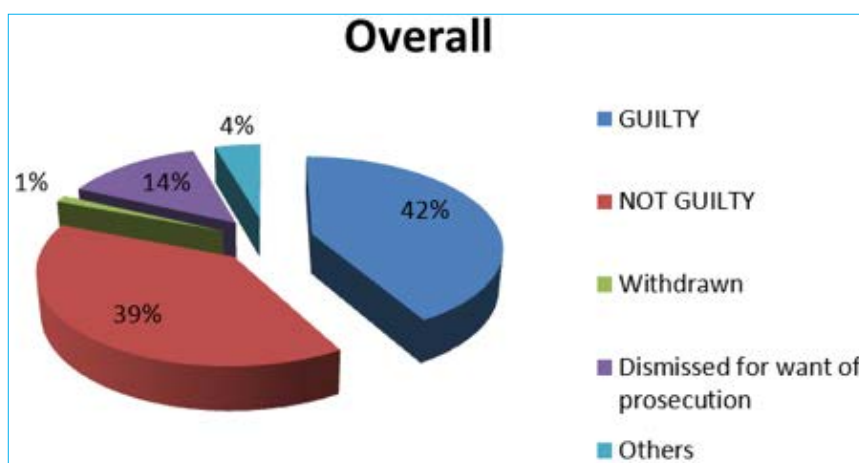
Offence	15- 19	20-24	25-29	30-34	35-39	40-44	45-49	50-54	55-59	60-64	65+	Not Stated	% of total	% of total
Homicide	1.4	12.3	21.4	16.4	10.5	9.1	3.6	3.6	2.3	0.9	1.4	17.3	3.3	220
Sexual	9.5	23.6	25.8	13.7	7	4.4	2.4	1.5	0.7	0.9	1.1	9.5	6.9	454
Threat to kill, assault, harassments & related offences	1.8	11.2	17.2	23	17	9.7	5	3.8	1.3	1	0.8	8.2	11.7	766
Dangerous/negligent acts	0.4	8.5	18.8	25.2	16.6	10.4	5.1	4.9	1.7	1.3	0.8	6.4	8.1	531
Kidnapping and related offences	-	-	-	-	-	-	-	-	-	-	-	-	-	-
Robbery, extortion and high-jacking	4.7	23.1	22.2	13.7	4.3	3.4	0.4	-	-	-	-	28.2	3.6	234
Burglary and related offences	6.7	23.5	19	15.1	7.3	1.7	-	1.1	-	-	0.6	25.1	2.7	179
Theft and related offences	4.1	19.1	17.5	18.1	7.5	4.7	2.3	0.8	0.2	0.3	0.2	25.3	18.1	1181
Fraud, deception and related offences	-	5.1	23.9	16.2	18.8	6.8	3.4	0.9	-	-	-	24.8	1.8	117
Controlled drug offences	0.7	8.9	16.4	21.2	4.1	6.8	3.4	4.1	0.7	2.1	1.4	30.1	2.2	146
Weapon and explosives offences	4.3	15.2	17.4	15.2	15.2	13	2.2	-	-	-	-	17.4	0.7	46
Damage to property and environment	0.9	19.6	23.4	19.6	5.6	4.7	0.9	1.9	0.9	0.9	1.9	19.6	1.6	107
Public order and other social code offences	5.3	5.3	31.6	-	15.8	5.3	5.3	-	-	-	5.3	26.3	0.3	19
Road and traffic offences	0.6	7.2	19.1	26.6	16.5	7.8	7.2	4.7	1.7	1.2	1.7	5.5	9.9	653
Offences against government, justice & crime organization	0.2	2.3	8.3	20.6	21	17.3	9.7	5.5	3.2	1.8	0.4	9.7	12.5	821
Offences not elsewhere classified (NEC)	3.8	11.7	18	15.1	8.8	6.8	3.8	3.3	1.4	0.6	0.8	26	16.6	1093
Total	2.8	12.6	17.8	19.8	12.2	8.1	4.4	3.1	1.3	0.9	0.7	16.7	100.0	6567

2.5 Verdicts

Chart 6 shows that of all the 6,567 offences committed, 42 percent of the accused were found guilty, 39 percent were not found guilty and about 14 percent were dismissed for want of prosecution while only about 1 percent was withdrawn. The remaining 4 percent were either committed, their verdict not taken, cautioned, reserved or verdict was not stated.

Among males, 38 percent of the accused were found guilty, 41 percent were not found guilty and about 17 percent were dismissed for want of prosecution while only about 1 percent was withdrawn. The remaining 3 percent were either committed, their verdict not taken, cautioned, reserved or verdict was not stated. Similarly 41 percent of the females accused were found guilty, 38 percent were not found guilty and about 17 percent were dismissed for want of prosecution while only about 1 percent was withdrawn. The remaining 3 percent were either committed, their verdict not taken, cautioned, reserved or verdict was not stated. (see also Table A7).

Chart 6: Percentage Distribution of Offences by Verdict and Sex of the Accused, 2010



3.0 Conclusion

During the period 2005-2010 the number of people involved in criminal activities increased as evidenced by the upward trend distribution of accused people for this period. The distribution of offences among the different age groups shows that youth are relatively more prone to committing crimes than other age groups. Despite of the fact that youth are more prone to criminal acts, it is somewhat comforting to learn that over the period 2005-2010 the participation of youth in criminal activities shows a downward trend.

Appendix A

Table A1: Percentage Distribution of Decided Cases per Accused by Magisterial Courts, 2010

Magisterial Court	Decided Cases	Percent
Broadhurst Magistrate Court	431	8.9
Village Magistrate Court	226	4.7
Extension 2 Magistrate Court	436	9
Francistown Magistrate Court	401	8.3
Lobatse Magistrate Court	435	9
Selibe Phikwe Magistrate Court	178	3.7
Jwaneng Magistrate Court	212	4.4
Kanye Magistrate Court	386	8
Ramotswa Magistrate Court	63	1.3
Molepolole Magistrate Court	232	4.8
Mochudi Magistrate Court	192	4
Serowe Magistrate Court	216	4.5
Palapye Magistrate Court	153	3.2
Mahalapye Magistrate Court	197	4.1
Leflhakane Magistrate Court	208	4.3
Masunga Magistrate Court	116	2.4
Maun Magistrate Court	184	3.8
Kasane Magistrate Court	215	4.5
Gantsi Magistrate Court	26	0.5
Tsabong Magistrate Court	220	4.6
Total	4,827	100

Table A2: Total Number of Accused by Magisterial Courts, 2005-2010

Magisterial Court	2005	2006	2007	2008	2009	2010
Broadhurst Magistrate Court	193	63	454	452	63	511
Village Magistrate Court	253	206	342	303	96	285
Extension 2 Magistrate Court	386	86	259	269	429	494
Francistown Magistrate Court	625	587	682	620	800	503
Lobatse Magistrate Court	311	319	651	541	363	481
Selibe Phikwe Magistrate Court	352	492	474	406	408	212
Jwaneng Magistrate Court	-	89	159	83	192	249
Kanye Magistrate Court	163	131	301	270	395	341
Ramotswa Magistrate Court	87	29	9	122	89	71
Molepolole Magistrate Court	217	193	109	298	524	272
Mochudi Magistrate Court	158	277	331	215	242	236
Serowe Magistrate Court	82	93	112	165	310	254
Palapye Magistrate Court	238	465	422	215	165	169
Mahalapye Magistrate Court	276	362	191	300	266	453
Leflhakane Magistrate Court	172	195	302	261	248	237
Masunga Magistrate Court	277	253	185	196	232	141
Maun Magistrate Court	222	195	199	146	149	229
Kasane Magistrate Court	152	161	188	290	121	254
Gantsi Magistrate Court	115	71	-	65	160	32
Tsabong Magistrate Court	195	190	210	135	431	271
Total	4,474	4,457	5,580	5,352	5,683	5,645

Table A3: Number of Decided Cases by Magisterial Court and Month, 2010

Magisterial Court	Jan	Feb	Mar	Apr	May	Jun	Jul	Aug	Sep	Oct	Nov	Dec	Total
Broadhurst Magistrate Court	19	39	45	45	30	25	29	61	68	66	4	-	431
Village Magistrate Court	12	21	19	20	16	19	3	50	31	35	-	-	226
Extension 2 Magistrate Court	14	26	43	42	20	34	15	61	63	46	39	33	436
Francistown Magistrate Court	44	35	62	44	33	25	49	21	21	49	10	8	401
Lobatse Magistrate Court	21	35	50	33	47	27	35	49	39	29	50	20	435
Selibe Phikwe Magistrate Court	29	21	20	54	20	18	-	7	3	1	4	1	178
Jwaneng Magistrate Court	28	13	13	38	47	21	15	20	8	9	-	-	212
Kanye Magistrate Court	13	12	21	26	22	36	20	52	20	11	36	17	286
Ramotswa Magistrate Court	8	4	13	9	4	7	13	5	-	-	-	-	63
Molepolole Magistrate Court	25	34	66	34	27	40	-	6	-	-	-	-	232
Mochudi Magistrate Court	8	17	10	16	19	27	36	17	21	21	-	-	192
Serowe Magistrate Court	18	9	20	27	-	29	26	48	12	-	18	9	216
Palapye Magistrate Court	11	16	21	21	22	25	6	19	12	-	-	-	153
Mahalapye Magistrate Court	20	29	22	62	26	34	36	54	27	30	32	25	397
Lethakane Magistrate Court	24	17	26	22	13	1	11	32	13	20	18	11	208
Masunga Magistrate Court	28	22	15	18	14	19	-	-	-	-	-	-	116
Maun Magistrate Court	57	10	11	44	26	36	-	-	-	-	-	-	184
Kasane Magistrate Court	32	19	21	19	27	18	5	14	10	31	19	-	215
Gantsi Magistrate Court	9	4	6	2	4	1	-	-	-	-	-	-	26
Tsabong Magistrate Court	20	18	33	28	16	27	18	21	19	-	20	-	220
Total	440	401	537	604	433	469	317	537	367	348	250	124	4,827
Percentage	9.1	8.3	11.1	12.5	9	9.7	6.6	11.1	7.6	7.2	5.2	2.6	100

Table A4: Number of Accused by Magisterial Court, Sex and Age, 2010

Magisterial Court	15-19	20-24	25-29	30-34	35-39	40-44	45-49	50-54	55-59	60-64	65-98	Not Stated	Total
Broadhurst Magistrate Court	12	57	94	90	74	39	13	11	4	1	3	39	437
Village Magistrate Court	3	31	40	57	32	19	13	4	-	-	-	34	233
Extension 2 Magisterial	4	48	91	105	64	44	24	18	2	4	3	34	441
Francistown Magistrate Court	11	41	57	79	48	36	24	9	6	6	2	74	393
Lobatse Magistrate Court	8	46	63	86	67	57	30	17	11	5	8	17	415
Selibe Phikwe Magistrate Court	3	12	46	51	23	13	5	11	3	8	3	19	197
Jwaneng Magistrate Court	7	19	37	46	36	23	7	7	11	1	1	40	235
Kanye Magistrate Court	15	49	67	49	39	19	12	15	3	2	8	20	298
Ramotswa Magistrate Court	4	6	6	14	9	8	6	2	2	1	-	7	65
Molepolole Magistrate Court	1	32	44	42	42	29	19	14	1	3	4	25	256
Mochudi Magistrate Court	-	18	39	45	31	24	7	7	8	3	2	14	198
Serowe Magistrate Court	10	49	52	47	28	13	8	5	9	3	-	7	231
Palapye Magistrate Court	2	19	24	35	18	17	9	6	2	2	1	17	152
Mahalapye Magistrate Court	24	62	67	91	46	31	31	10	4	8	1	43	418
Lethakane Magistrate Court	11	31	46	41	18	24	6	11	2	4	1	9	204
Masunga Magistrate Court	7	24	29	18	16	9	6	6	4	2	-	9	130
Maun Magistrate Court	1	16	40	48	21	17	6	9	1	-	-	65	224
Kasane Magistrate Court	11	29	37	33	22	25	11	3	2	-	-	34	207
Gantsi Magistrate Court	3	3	3	8	2	-	1	-	-	-	-	10	30
Tsabong Magistrate Court	4	28	49	41	41	20	14	11	-	-	3	35	246
Total	141	620	931	1026	677	467	252	176	75	53	40	552	5010

Table A4: Table A4: Number of Accused by Magisterial Court, Sex and Age, 2010(cont'd)

Magistrate Court	15-19	20-24	25-29	30-34	35-39	40-44	45-49	50-54	55-59	60-64	65-98	Not Stated	Total
Female													
Broadhurst Magistrate Court	1	6	6	4	3	4	1	2	-	-	-	2	29
Village Magistrate Court	-	2	4	2	9	4	1	3	-	-	-	3	28
Extension 2 Magistrate Court	-	4	3	12	6	3	-	-	-	-	1	4	33
Francistown Magistrate Court	1	2	5	2	3	2	1	-	-	-	-	8	24
Lobatse Magistrate Court	-	2	2	5	7	2	4	-	-	1	-	3	26
Selibe Phikwe Magistrate Court	-	-	2	5	2	1	1	-	-	-	-	1	12
Jwaneng Magistrate Court	-	1	1	-	4	-	1	-	-	-	-	1	8
Kanye Magistrate Court	-	4	4	3	-	4	-	1	-	-	-	2	18
Ramotswa Magistrate Court	2	-	2	-	-	-	-	-	-	-	-	-	4
Molepolole Magistrate Court	-	1	3	5	1	-	-	-	1	-	-	-	11
Mochudi Magistrate Court	-	-	1	3	4	-	1	-	-	-	1	-	10
Serowe Magistrate Court	-	3	-	3	-	-	-	-	-	-	-	2	8
Palapye Magistrate Court	-	1	5	-	2	-	1	2	-	1	-	-	12
Mahalapye Magistrate Court	1	1	3	2	-	-	-	-	-	-	1	-	8
Lethakane Magistrate Court	-	-	3	1	1	2	-	-	-	-	-	-	7
Masunga Magistrate Court	-	4	1	3	1	-	-	1	1	-	-	-	11
Maun Magistrate Court	-	-	2	1	-	-	2	-	-	-	-	-	5
Kasane Magistrate Court	-	7	12	6	1	1	-	-	-	-	-	9	36
Gantsi Magistrate Court	-	-	-	1	-	-	-	-	-	-	-	1	2
Tsabong Magistrate Court	-	-	1	1	1	-	1	1	-	1	-	-	6
Total	5	38	60	59	45	23	14	10	2	3	3	36	298

Table A4: Table A4: Number of Accused by Magisterial Court, Sex and Age, 2010 (cont'd)

Magistrate Court	15-19	20-24	25-29	30-34	35-39	40-44	45-49	50-54	55-59	60-64	65-98	Not Stated	Total
Not Stated													
Broadhurst Magistrate Court	-	-	-	-	-	-	-	-	-	-	-	45	45
Village Magistrate Court	-	-	-	-	-	-	-	-	-	-	-	24	24
Extension 2 Magistrate Court	-	-	-	-	-	-	-	-	-	-	-	20	20
Francistown Magistrate Court	-	-	-	-	-	-	-	-	-	-	-	36	36
Lobatse Magistrate Court	-	-	1	1	-	1	-	-	-	-	-	37	40
Selibe Phikwe Magistrate Court	-	-	-	-	-	-	-	-	-	-	1	2	3
Jwaneng Magistrate Court	-	-	1	1	-	-	-	-	-	-	-	4	6
Kanye Magistrate Court	-	-	-	-	-	-	-	-	-	-	-	25	25
Ramotswa Magistrate Court	-	1	-	-	-	-	-	-	-	-	-	1	2
Molepolole Magistrate Court	-	-	-	-	-	-	-	-	-	-	-	5	5
Mochudi Magistrate Court	-	-	-	-	-	-	-	-	-	-	-	28	28
Serowe Magistrate Court	-	-	-	-	-	-	-	-	-	-	-	15	15
Palapye Magistrate Court	-	-	-	-	1	-	-	-	-	-	-	4	5
Mahalapye Magistrate Court	-	-	1	-	-	1	-	-	-	-	-	25	27
Lethakane Magistrate Court	-	-	-	-	-	-	-	-	-	-	-	26	26
Kasane Magistrate Court	-	1	-	1	-	-	-	-	-	-	-	9	11
Tsabong Magistrate Court	-	-	-	-	-	-	-	-	-	-	-	19	19
Total	-	2	3	3	1	2	-	-	-	-	1	325	337

Table A4: Table A4: Number of Accused by Magisterial Court, Sex and Age, 2010 (cont'd)

Magistrate Court	15-19	20-24	25-29	30-34	35-39	40-44	45-49	50-54	55-59	60-64	65-98	Not Stated	Total
All sex													
Broadhurst Magistrate Court	13	63	10	94	77	43	14	13	4	1	3	86	511
Village Magistrate Court	3	33	44	59	41	23	14	7	-	-	-	61	285
Extension 2 Magistrate Court	4	52	94	117	70	47	24	18	2	4	4	58	494
Francistown Magistrate Court	12	43	62	81	51	38	25	9	6	6	2	118	453
Lobatse Magistrate Court	8	48	6	92	74	60	34	17	11	6	8	57	481
Selibe Phikwe Magistrate Court	3	12	48	56	25	14	6	11	3	8	4	22	212
Jwaneng Magistrate Court	7	20	39	47	40	23	8	7	11	1	1	45	249
Kanye Magistrate Court	15	53	71	52	39	23	12	16	3	2	8	47	341
Ramotswa Magistrate Court	6	7	8	14	9	8	6	2	2	1	-	8	71
Molepolole Magistrate Court	1	33	47	47	43	29	19	14	2	3	4	30	272
Mochudi Magistrate Court	-	18	40	48	35	24	8	7	8	3	3	42	236
Serowe Magistrate Court	10	52	52	50	28	13	8	5	9	3	-	24	254
Palapye Magistrate Court	2	20	29	35	21	17	10	8	2	3	1	21	169
Mahalapye Magistrate Court	25	63	71	93	46	32	31	10	4	8	2	68	453
Letlhakane Magistrate Court	11	31	49	42	19	26	6	11	2	4	1	35	237
Masunga Magistrate Court	7	28	30	21	17	9	6	7	5	2	-	9	141
Maun Magistrate Court	1	16	42	49	21	17	8	9	1	-	-	65	229
Kasane Magistrate Court	11	37	49	40	23	26	11	3	2	-	-	52	254
Gantsi Magistrate Court	3	3	3	9	2	-	1	-	-	-	-	11	32
Tsabong Magistrate Court	4	28	50	42	42	20	15	12	-	1	3	54	271
Total	146	660	994	1088	723	492	266	186	77	56	44	913	5,645

Table A5: Total Number of Offences by Magisterial Court and Sex of Accused, 2010

Magisterial Court	Homicides				Sexual				Threat to kill, assault & related offences				Dangerous/ negligent acts			Total
	M	F	NS	Total	M	F	NS	Total	M	F	NS	Total	M	F	NS	
Broadhurst Magistrate Court	6	1	1	8	18	-	1	19	182	11	5	198	1	-	-	1
Village Magistrate Court	9	1	5	15	10	-	-	10	83	2	1	86	1	-	-	1
Extension 2 Magistrate Court	18	1	1	20	8	-	1	9	46	2	-	48	210	13	5	228
Francistown Magistrate Court	19	2	-	21	47	-	2	49	52	1	3	56	8	1	3	12
Lobatse Magistrate Court	14	1	-	15	29	-	1	30	48	2	-	50	48	4	2	54
Selibe Phikwe Magistrate Court	6	-	-	6	19	-	1	20	22	1	-	23	11	-	-	11
Jwaneng Magistrate Court	5	-	-	5	31	-	1	32	18	-	-	18	7	-	2	9
Kanye Magistrate Court	19	3	3	25	43	-	-	43	29	1	-	30	21	1	-	22
Ramotswa Magistrate Court	3	-	-	3	3	1	-	4	7	-	-	7	14	-	-	14
Molepolole Magistrate Court	17	3	1	21	17	-	-	17	18	-	4	22	-	-	-	-
Mochudi Magistrate Court	3	-	-	3	8	-	1	9	31	-	-	31	32	-	2	34
Serowe Magistrate Court	7	-	-	7	38	-	-	38	22	-	-	22	21	-	-	21
Palapye Magistrate Court	4	-	-	4	4	-	-	4	9	1	-	10	27	-	-	27
Mahalapye Magistrate Court	22	3	-	25	41	-	-	41	43	2	2	47	73	-	2	75
Lethakane Magistrate Court	8	1	-	9	36	-	2	38	27	-	1	28	6	-	-	6
Masunga Magistrate Court	10	-	-	10	12	-	-	12	16	1	-	17	1	-	-	1
Maun Magistrate Court	9	-	-	9	16	-	-	16	35	1	-	36	1	-	-	1
Kasane Magistrate Court	3	1	-	4	12	1	11	13	18	-	-	18	2	-	-	2
Gantsi Magistrate Court	2	-	-	2	7	1	-	8	2	-	-	2	-	-	-	-
Tsabong Magistrate Court	8	-	-	8	38	-	4	42	17	-	-	17	12	-	-	12
Total	192	17	11	220	437	3	14	454	725	25	16	766	496	19	16	531

Table A5: Total Number of Offences by Magisterial Court and Sex of Accused, 2010(cont'd)

Magisterial Court	Kidnapping and related offences				Robbery, extortion and high-jacking				Burglary and related offences				Theft and related offences			
	M	F	NS	Total	M	F	NS	Total	M	F	NS	Total	M	F	NS	Total
Broadhurst Magistrate Court	-	-	-	-	39	-	4	43	14	-	2	16	104	6	24	134
Village Magistrate Court	-	-	-	-	13	-	-	13	10	1	5	16	62	5	4	71
Extension 2 Magistrate Court	-	-	-	-	15	-	-	15	2	-	-	2	62	9	7	78
Francistown Magistrate Court	-	-	-	-	13	6	6	25	24	1	3	28	93	9	7	109
Lobatse Magistrate Court	-	-	-	-	19	1	3	23	8	-	2	10	67	6	11	84
Selibe Phikwe Magistrate Court	-	-	-	-	1	-	-	1	1	-	1	2	42	3	-	45
Jwaneng Magistrate Court	-	-	-	-	6	-	-	6	7	1	-	8	50	7	1	58
Kanye Magistrate Court	-	-	-	-	13	-	3	16	7	-	-	7	68	4	7	79
Ramotswa Magistrate Court	-	-	-	-	6	-	1	7	3	-	1	4	11	2	2	15
Molepolole Magistrate Court	-	-	-	-	9	-	-	9	5	-	-	5	53	3	-	56
Mochudi Magistrate Court	-	-	-	-	3	-	-	3	3	1	1	5	37	6	15	58
Serowe Magistrate Court	-	-	-	-	11	-	-	11	15	-	7	22	31	-	3	34
Palapye Magistrate Court	-	-	-	-	-	-	-	-	-	-	-	-	28	3	2	33
Mahalapye Magistrate Court	-	-	-	-	14	-	4	18	13	-	2	15	77	1	17	95
Lethakane Magistrate Court	-	-	-	-	7	-	1	8	3	-	-	3	39	3	4	46
Masunga Magistrate Court	-	-	-	-	10	-	-	10	9	-	-	9	20	2	-	22
Maun Magistrate Court	-	-	-	-	22	-	-	22	9	-	-	9	62	1	-	63
Kasane Magistrate Court	-	-	-	-	1	-	-	1	11	-	2	13	40	5	1	46
Gantsi Magistrate Court	-	-	-	-	-	-	-	-	1	-	-	1	3	-	-	3
Tsabong Magistrate Court	-	-	-	-	3	-	-	3	4	-	-	4	46	1	5	52
Total	-	-	-	-	205	7	22	234	149	4	26	179	995	76	110	1181

Table A5: Total Number of Offences by Magisterial Court and Sex of Accused, 2010 (cont'd)

Magisterial Court	Fraud, deception and related offences				Controlled drug offences				Weapon and explosives offences				Damage to property and environment				Total
	M	F	NS	Total	M	F	NS	Total	M	F	NS	Total	M	F	NS	Total	
Broadhurst Magistrate Court	4	-	-	4	2	-	-	2	2	-	3	5	13	1	-	-	14
Village Magistrate Court	8	7	1	16	17	2	2	21	2	-	-	2	3	-	1	-	4
Extension 2 Magistrate Court	1	2	-	3	1	-	-	1	1	-	-	1	7	1	-	-	8
Francistown Magistrate Court	11	1	-	12	11	2	3	16	2	-	-	2	7	1	1	-	9
Lobatse Magistrate Court	3	1	2	6	1	-	-	1	1	-	-	1	6	-	2	-	8
Selibe Phikwe Magistrate Court	9	2	-	11	3	2	1	6	-	-	-	-	2	-	-	-	2
Jwaneng Magistrate Court	2	-	-	2	11	-	-	11	2	-	-	2	3	1	-	-	4
Kanye Magistrate Court	3	2	4	9	11	1	-	12	4	-	-	4	6	-	-	-	6
Ramotswa Magistrate Court	-	-	-	-	-	-	-	-	1	-	-	1	1	-	-	-	1
Molepolole Magistrate Court	11	-	4	15	2	1	-	3	10	-	-	10	7	-	8	-	15
Mochudi Magistrate Court	3	-	-	3	3	1	-	4	1	-	-	1	1	-	-	-	1
Serowe Magistrate Court	4	4	1	9	3	-	-	3	-	-	-	-	6	-	-	-	6
Palapye Magistrate Court	1	-	-	1	1	-	-	1	-	-	-	-	1	1	-	-	2
Mahalapye Magistrate Court	4	-	-	4	1	-	-	1	3	-	-	3	3	-	-	-	3
Letlhakane Magistrate Court	1	-	-	1	11	1	1	13	2	-	-	2	4	-	-	-	4
Masunga Magistrate Court	-	-	-	-	16	-	-	16	-	-	-	-	1	-	-	-	1
Maun Magistrate Court	8	-	-	8	6	-	-	6	7	-	-	7	5	-	-	-	5
Kasane Magistrate Court	6	3	-	9	12	3	3	18	1	-	-	1	5	4	-	-	9
Gantsi Magistrate Court	1	-	-	1	-	-	-	-	2	-	-	2	-	-	-	-	-
Tsabong Magistrate Court	3	-	-	3	8	1	2	11	2	-	-	2	3	2	-	-	5
Total	83	22	12	117	120	14	12	146	43	-	3	46	84	11	12	107	

Table A5: Total Number of Offences by Magisterial Court and Sex of Accused, 2010 (cont'd)

Magisterial Court	Public Order and other Social code offences				Road and traffic offences				Offences against Government, Justice				Offences not elsewhere classified (NEC)				Total
	M	F	NS	Total	M	F	NS	Total	M	F	NS	Total	M	F	NS	Total	
Broadhurst Magistrate Court	3	-	-	3	2	1	-	3	63	-	2	65	62	9	12	83	598
Village Magistrate Court	-	-	-	-	-	-	-	-	14	-	1	15	31	16	9	56	326
Extension 2 Magistrate Court	1	-	-	1	68	4	3	75	19	1	1	21	50	4	2	56	566
Francistown Magistrate Court	2	-	1	3	61	1	3	65	78	-	4	82	50	7	8	65	554
Lobatse Magistrate Court	1	-	-	1	80	4	6	90	106	1	8	112	55	7	12	74	559
Selibe Phikwe Magistrate Court	-	-	-	-	49	-	-	49	34	-	-	34	27	6	1	34	244
Jwaneng Magistrate Court	-	-	-	-	41	1	1	43	51	-	2	53	48	-	-	48	299
Kanye Magistrate Court	1	-	-	1	35	-	-	35	37	1	-	38	53	6	15	74	401
Ramotswa Magistrate Court	-	-	-	-	8	-	-	8	8	-	-	8	7	2	1	10	82
Molepolole Magistrate Court	2	-	-	2	30	2	-	32	70	1	-	71	46	2	-	48	326
Mochudi Magistrate Court	1	-	-	1	40	1	1	42	16	-	-	16	42	1	8	51	262
Serowe Magistrate Court	-	-	-	-	49	4	-	53	39	-	-	39	16	3	4	53	318
Palapye Magistrate Court	2	-	-	2	13	-	-	13	51	1	2	54	25	6	2	33	184
Mahalapye Magistrate Court	1	-	-	1	68	1	-	69	78	-	2	80	65	2	14	81	558
Letlhakane Magistrate Court	1	-	-	1	13	-	-	13	22	-	1	23	48	2	20	70	265
Masunga Magistrate Court	-	1	-	1	12	2	-	14	27	1	-	28	11	5	-	16	157
Maun Magistrate Court	-	-	-	-	13	1	-	14	23	-	-	23	36	2	-	38	257
Kasane Magistrate Court	-	-	-	-	10	1	-	11	35	1	-	36	80	21	9	110	291
Gantsi Magistrate Court	-	-	-	-	3	-	-	3	3	-	-	3	14	1	-	15	40
Tsabong Magistrate Court	2	-	-	2	20	1	-	21	17	-	-	17	99	1	8	108	307
Total	17	1	1	19	615	24	14	653	791	7	23	821	865	103	125	1093	6,567

Table A6: Total Number of Offences by Sex and Age of Accused, 2010

Offence	15-19	20-24	25-29	30-34	35-39	40-44	45-49	50-54	55-59	60-64	65+	NOT STATED	Total
MALE													
Homicide	3	25	39	32	23	18	8	8	5	2	3	26	192
Sexual	43	106	116	61	32	20	11	7	3	4	4	30	437
Threat to murder, assault, harassments & related offences	14	84	128	168	127	71	36	29	10	7	6	45	725
Dangerous/negligent acts	2	41	97	129	84	53	25	26	9	7	3	20	496
Kidnapping and related offences	-	-	-	-	-	-	-	-	-	-	-	-	-
Robbery, extortion and high-jacking	11	52	52	32	10	8	1	-	-	-	-	39	205
Burglary and related offences	12	41	34	26	12	3	-	2	-	-	-	19	149
Theft and related offences	46	216	194	200	73	51	25	8	2	3	2	175	995
Fraud, deception and related offences	-	4	21	16	17	5	4	1	-	-	-	15	83
Controlled drug offences	1	12	24	28	5	10	3	4	-	3	2	28	120
Weapon and explosives offences	2	7	8	7	7	6	1	-	-	-	-	5	43
Damage to property and environment	1	21	21	18	4	5	-	2	1	1	2	8	84
Public order and other social code offences	1	1	5	-	3	1	1	-	-	-	1	4	17
Road and traffic offences	4	43	120	166	104	49	46	30	11	7	10	25	615
Offences against government, justice & crime organization	1	18	65	166	170	142	80	45	26	15	3	59	791
Offences not elsewhere classified (NEC)	37	110	172	150	83	64	37	31	14	6	9	152	865
Total	179	781	1096	1199	754	506	278	193	81	55	45	650	5817

Table A6: Total Number of Offences by Sex and Age of Accused, 2010(cont'd)

Offence	15-19	20-24	25-29	30-34	35-39	40-44	45-49	50-54	55-59	60-64	65+	NOT STATED	Total
FEMALE													
Homicide	-	2	8	4	-	2	-	-	-	-	-	1	17
Sexual	-	1	1	1	-	-	-	-	-	-	-	-	-
Threat to kill, assault, harassments & related offences	-	2	4	8	3	3	2	-	-	1	0	2	25
Dangerous/negligent acts	-	4	1	5	4	1	2	-	-	-	1	1	19
Kidnapping and related offences	-	-	-	-	-	-	-	-	-	-	-	-	-
Robbery, extortion and high-jacking	-	1	-	-	-	-	-	-	-	-	-	6	7
Burglary and related offences	-	-	-	1	1	-	-	-	-	-	1	1	4
Theft and related offences	2	8	13	14	15	5	2	2	-	-	-	15	76
Fraud, deception and related offences	-	2	7	3	5	3	-	-	-	-	-	2	22
Controlled drug offences	-	1	-	2	1	-	2	2	1	-	-	5	14
Weapon and explosives offences	-	-	-	-	-	-	-	-	-	-	-	-	-
Damage to property and environment	-	-	4	3	2	-	1	-	-	-	-	1	11
Public order and other social code offences	-	-	1	-	-	-	-	-	-	-	-	-	-
Road and traffic offences	0	4	4	7	4	1	1	1	-	1	1	-	24
Offences against government, justice & crime organization	-	1	3	2	1	-	-	-	-	-	-	-	7
Offences not elsewhere classified (NEC)	4	16	25	14	13	10	4	5	1	1	-	10	103
Total	6	42	71	64	49	25	14	10	2	3	3	44	333

Table A6: Total Number of Offences by Sex and Age of Accused, 2010 (cont'd)

Offence	15-19	20-24	25-29	30-34	35-39	40-44	45-49	50-54	55-59	60-64	65+	NOT STATED	Total
SEX NOT STATED													
Homicide	-	-	-	-	-	-	-	-	-	-	-	11	11
Sexual	-	-	-	-	-	-	-	-	-	-	1	13	14
Threat to murder, assault, harassments & related offences	-	-	-	-	-	-	-	-	-	-	-	16	16
Dangerous/negligent acts	-	-	2	-	-	1	-	-	-	-	-	13	16
Kidnapping and related offences	-	-	-	-	-	-	-	-	-	-	-	-	-
Robbery, extortion and high-jacking	-	1	-	-	-	-	-	-	-	-	-	21	22
Burglary and related offences	-	1	-	-	-	-	-	-	-	-	-	25	26
Theft and related offences	-	1	-	-	-	-	-	-	-	-	-	109	110
Fraud, deception and related offences	-	-	-	-	-	-	-	-	-	-	-	12	12
Controlled drug offences	-	-	-	1	-	-	-	-	-	-	-	11	12
Weapon and explosives offences	-	-	-	-	-	-	-	-	-	-	-	3	3
Damage to property and environment	-	-	-	-	-	-	-	-	-	-	-	12	12
Public order and other social code offences	-	-	-	-	-	-	-	-	-	-	-	1	1
Road and traffic offences	-	-	1	1	-	1	-	-	-	-	-	11	14
Offences against government, justice & crime organization	-	-	-	1	1	-	-	-	-	-	-	21	23
Offences not elsewhere classified (NEC)	-	2	-	1	-	-	-	-	-	-	-	122	125
Total	-	5	3	4	1	2	-	-	-	-	1	401	417

Table A6: Total Number of Offences by Sex and Age of Accused, 2010 (cont'd)

Offence	15-19	20-24	25-29	30-34	35-39	40-44	45-49	50-54	55-59	60-64	65+	NOT STATED	Total
GRAND TOTAL													
Homicide	3	27	47	36	23	20	8	8	5	2	3	38	220
Sexual	43	107	117	62	32	20	11	7	3	4	5	43	454
Threat to murder, assault, harassments & related offences	14	86	132	176	130	74	38	29	10	8	6	63	766
Dangerous/negligent acts	2	45	100	134	88	55	27	26	9	7	4	34	531
Kidnapping and related offences	-	-	-	-	-	-	-	-	-	-	-	-	-
Robbery, extortion and high-jacking	11	55	52	32	10	8	1	-	-	-	-	66	234
Burglary and related offences	12	42	34	27	13	3	-	2	-	-	1	45	179
Theft and related offences	48	225	207	214	88	56	27	10	2	3	2	299	1181
Fraud, deception and related offences	-	6	28	19	22	8	4	1	-	-	-	29	117
Controlled drug offences	1	13	24	31	6	10	5	6	1	3	2	44	146
Weapon and explosives offences	2	7	8	7	7	6	1	-	-	-	-	8	46
Damage to property and environment	1	21	25	21	6	5	1	2	1	1	2	21	107
Public order and other social code offences	1	1	6	-	3	1	1	-	-	-	1	5	19
Road and traffic offences	4	47	125	174	108	51	47	31	11	8	11	36	653
Offences against government, justice & crime organization	2	19	68	169	172	142	80	45	26	15	3	80	821
Offences not elsewhere classified (NEC)	41	128	197	165	96	74	41	36	15	7	9	284	1093
Total	185	828	1170	1267	804	533	292	203	83	58	49	1095	6,567

Table A7: Number of Offences by Verdict and Sex of Accused, 2010

Offence	Guilty	Not Guilty	Withdrawn	Cautioned	Committed	Reserved	Dismissed for want of Prosecution	Not stated	Total
MALE									
Homicide	33	38	1	3	84	7	25	1	192
Sexual	160	187	7	1	7	2	71	2	437
Threat to murder, assault, harassments & related offences	115	414	15	7	11	1	160	2	725
Dangerous/negligent acts	318	149	9	1	-	1	14	2	494
Kidnapping and related offences	-	-	-	-	-	-	-	-	-
Robbery, extortion and high-jacking	51	98	1	-	1	1	55	-	207
Burglary and related offences	71	53	3	-	-	-	21	1	149
Theft and related offences	453	374	8	4	3	4	147	2	995
Fraud, deception and related offences	45	24	1	-	1	-	12	-	83
Controlled drug offences	75	29	1	2	1	-	12	-	120
Weapon and explosives offences	18	14	-	1	-	-	9	-	42
Damage to property and environment	22	46	-	1	1	-	15	-	85
Public order and other social code offences	4	7	-	-	-	-	6	-	17
Road and traffic offences	325	196	1	2	-	-	90	1	165
Offences against government, justice & crime organization	190	377	19	8	-	1	191	5	791
Offences not elsewhere classified (NEC)	347	358	1	4	6	4	142	3	865
Total	2227	2364	67	34	115	21	970	19	5817

Table A7: Number of Offences by Verdict and Sex of Accused, 2010 (cont'd)

Offence	Guilty	Not Guilty	Withdrawn	Cautioned	Committed	Reserved	Dismissed for want of Prosecution	Not stated	Total
FEMALE									
Homicide	1	4	-	1	9	-	2	-	17
Sexual	0	3	-	-	-	-	-	-	3
Threat to murder, assault, harassments & related offences	4	13	1	-	3	-	4	-	25
Dangerous/negligent acts	10	8	-	-	-	-	1	-	19
Robbery, extortion and high-jacking	3	2	-	-	-	-	2	-	7
Burglary and related offences	-	2	-	-	-	-	2	-	4
Theft and related offences	32	28	-	-	1	-	15	-	76
Fraud, deception and related offences	13	6	-	-	-	-	3	-	22
Controlled drug offences	10	3	1	-	-	-	-	-	14
Weapon and explosives offences	-	-	-	-	-	-	-	-	-
Damage to property and environment	1	9	-	-	-	-	1	-	11
Public order and other social code offences	-	1	-	-	-	-	-	-	1
Road and traffic offences	11	7	-	-	-	-	6	-	24
Offences against government, justice & crime organization	5	2	-	-	-	-	-	-	7
Offences not elsewhere classified (NEC)	49	42	2	-	1	-	9	-	103
Total	139	130	4	1	14	-	45	-	333

Table A7: Number of Offences by Verdict and Sex of Accused, 2010 (cont'd)

Offence	Guilty	Not Guilty	Withdrawn	Cautioned	Committed	Reserved	Dismissed for want of Prosecution	Not stated	Total
SEX NOT STATED									
Homicide	-	1	-	3	7	-	-	-	11
Sexual	9	3	-	-	-	-	1	1	14
Threat to murder, assault, harassments & related offences	3	11	-	-	-	-	2	-	16
Dangerous/negligent acts	14	1	-	-	-	-	-	1	16
Robbery, extortion and high-jacking	13	6	-	-	-	-	3	-	22
Burglary and related offences	6	11	3	-	-	-	2	4	26
Theft and related offences	36	67	2	1	-	-	4	-	110
Fraud, deception and related offences	2	8	-	-	1	-	1	-	12
Controlled drug offences	6	4	2	-	-	-	-	-	12
Weapon and explosives offences	1	2	-	-	-	-	-	-	3
Damage to property and environment	4	6	-	-	-	-	2	-	12
Public order and other social code offences	1	-	-	-	-	-	-	-	1
Road and traffic offences	8	6	-	-	-	-	-	-	14
Offences against government, justice & crime organization	9	14	-	-	-	-	-	-	23
Offences not elsewhere classified (NEC)	50	68	2	1	-	2	2	0	125
Total	162	208	9	5	8	2	17	6	417

Table A7: Number of Offences by Verdict and Sex of Accused, 2010 (cont'd)

Offence	Guilty	Not Guilty	Withdrawn	Cautioned	Committed	Reserved	Dismissed for want of Prosecution	Not stated	Total
GRAND TOTAL									
Homicide	34	43	1	7	100	7	27	1	220
Sexual	169	193	7	1	7	2	72	3	454
Threat to murder, assault, harassments & related offences	122	438	16	7	14	1	166	2	766
Dangerous/negligent acts	342	158	9	1	-	1	15	3	529
Kidnapping and related offences	-	-	-	-	-	-	-	-	-
Robbery, extortion and high-jacking	67	106	1	-	1	1	60	-	236
Burglary and related offences	77	66	6	-	-	-	25	5	179
Theft and related offences	521	469	10	5	4	4	166	2	1181
Fraud, deception and related offences	60	38	1	-	2	-	16	-	117
Controlled drug offences	91	36	4	2	1	-	12	-	146
Weapon and explosives offences	19	16	-	1	-	-	9	-	45
Damage to property and environment	27	61	-	1	1	-	18	-	108
Public order and other social code offences	5	8	-	-	-	-	6	-	19
Road and traffic offences	344	209	1	2	-	-	96	1	653
Offences against government, justice & crime organization	204	393	19	8	-	1	191	5	821
Offences not elsewhere classified (NEC)	446	468	5	5	7	6	153	3	1093
Total	2528	2702	80	40	137	23	1032	25	6,567

Table A8: Number of Cases by Magistrate Court and Duration before Completion -2010

Magisterial court	Day 1-6	Weeks (7-29 days)	30 days -less 12 months	One Year and above	Total
Broadhurst Magistrate Court	27	55	304	125	511
Village Magistrate Court	29	32	143	81	285
Extension 2 Magistrate Court	14	94	301	85	494
Francistown Magistrate Court	26	40	267	120	453
Lobatse Magistrate Court	28	54	300	99	481
Selibe Phikwe Magistrate Court	46	17	127	22	212
Jwaneng Magistrate Court	45	25	147	32	249
Kanye Magistrate Court	36	77	167	61	341
Ramotswa Magistrate Court	8	11	42	10	71
Molepolole Magistrate Court	16	23	191	42	272
Mochudi Magistrate Court	5	19	165	47	236
Serowe Magistrate Court	11	25	141	77	254
Palapye Magistrate Court	10	27	90	42	169
Mahalapye Magistrate Court	51	54	279	69	453
Leflhakane Magistrate Court	9	20	125	83	237
Masunga Magistrate Court	8	23	62	48	141
Maun Magistrate Court	23	19	150	37	229
Kasane Magistrate Court	69	46	137	2	252
Gantsi Magistrate Court	-	3	17	12	32
Tsabong Magistrate Court	50	18	180	23	271
Total	511	682	3335	1117	5,645
Percent	9.1	12.159.1	19.8	100.0	

Appendix B

CRIME STATISTICS CLASSIFICATION CODES

01 HOMICIDE OFFENCES

0101 MURDER/MANSLAUGHTER/INFANTICIDE

- 0111 Murder
- 0112 Manslaughter
- 0113 Infanticide

0102 DANGEROUS DRIVING LEADING TO DEATH

- 0121 Manslaughter (traffic fatality)
- 0122 Dangerous driving causing death
- 0123 Causing death by drunken driving

02 SEXUAL OFFENCES

021 RAPE AND SEXUAL ASSAULT

- 0211 Rape of a male or female
- 0212 Defilement of a boy or girl less than 17 years old
- 0213 Sexual offence involving mentally impaired person
- 0214 Aggravated sexual assault
- 0215 Sexual assault (not aggravated)

022 OTHER SEXUAL OFFENCES

- 0221 Incest
- 0222 Child pornography offences
- 0223 Child pornography - obstruction of warrant
- 0224 Gross indecency

03 ATTEMPTS/THREATS TO MURDER, ASSAULTS, HARASSMENTS AND RELATED OFFENCES

031 ATTEMPTS/THREATS TO MURDER

- 0311 Murder-attempt
- 0312 Murder-threat (threat to kill)

0320 ASSAULTS

- 03201 Assault causing harm
- 03202 Poisoning
- 03203 Assault or obstruction of Garda/official, resisting arrest
- 03204 Minor assault
- 03205 Indecent assault on boy(s) under 14 years
- 03206 Indecent assault on females
- 03207 Assault O.A.B.H
- 03208 Assault common
- 03209 Common nuisance
- 03210 Other assaults
- 03211 Grievous harm

0330 HARASSMENT AND RELATED OFFENCES

- 03301 Harassment, stalking, threats
- 03302 Coercion
- 03303 Menacing phone calls
- 03304 Incitement to hatred offences
- 03305 Demanding payment of debt causing alarm
- 03306 Use of insulting language

04 DANGEROUS OR NEGLIGENT ACTS

0410 DANGEROUS OR NEGLIGENT OPERATION OF A VEHICLE

- 04101 Dangerous driving causing serious bodily harm
- 04102 Driving/In charge of a vehicle while over legal alcohol limit
- 04103 Driving/In charge of a vehicle under the influence of drugs
- 04104 Dangerous/careless driving and motorway offences
- 04105 Speeding
- 04106 Causing death by leaving motor vehicle on a road

0420 042 OTHER DANGEROUS OR NEGLIGENT ACTS

- 04201 Endangerment with potential for serious harm/death
- 04202 Abandoning a child, child neglect and cruelty
- 04203 Unseaworthy/Dangerous use of boat or ship
- 04204 False alarm/Interference with aircraft or air transport facilities
- 04205 Endangering traffic offences
- 04206 Reckless and Negligent Acts

05 KIDNAPPING AND RELATED OFFENCES

0510 051 FALSE IMPRISONMENT, ABDUCTION

- 05101 False Imprisonment
- 05102 Abduction of person under 16 years of age

06 ROBBERY, EXTORTION AND HIGHJACKING OFFENCES

0610 ROBBERY

- 06101 Robbery of an establishment or institution
- 06102 Robbery of cash or goods in transit
- 06103 Robbery from the person

0620 EXTORTION OFFENCES

- 06201 Blackmail, extortion

0630 HIJACKING OFFENCES

- 06301 Carjacking, high-jacking/unlawful seizure of aircraft/vessel

07 BURGLARY AND RELATED OFFENCES

0710 BURGLARY

- 07101 Aggravated burglary
- 07102 Burglary (not aggravated)
- 07103 Possession of an article (with intent to burgle, steal, demand)
- 07104 Burglary and theft

08 THEFT AND RELATED OFFENCES

0810 THEFT/TAKING OF VEHICLE AND RELATED OFFENCES

- 08101 Theft/Unauthorised taking of vehicle
- 08102 Interfering with vehicle (with intent to steal item or vehicle)
- 08103 Theft of a motor vehicle
- 08104 Theft of a motor vehicle using violence
- 08105 Theft of a motor vehicle using offensive weapon or firearms or threatening to use them
- 08106 Dealing in stolen motor vehicle or parts thereof
- 08107 Failure to report suspected stolen vehicle by motor dealer
- 08108 Selling or receiving a motor vehicle without document effecting such sale
- 08109 Failing to issue a declaration or certificate being a motor vehicle dealer
- 08110 Failing to present declaration or certificate being a motor vehicle purchaser
- 08111 Tempering with motor vehicle (Conceal or disguise identification)
- 08112 Failure to report the alteration or change of colour of a motor vehicle at registration office for amendment
- 08113 Driving motor vehicle without number plates or without satisfactory explanation
- 08114 Manufacturing instruments which may be in the commission of offence
- 08115 Making number plates or key for a person without seeing any identification for that person

- 08116 Breaking into motor vehicle
- 08117 Attempting to steal a motor vehicle
- 08118 Attempting to receive a stolen motor vehicle
- 08119 Conspiring with any other person in the commission of the offence
- 08120 Selling or assisting to sell a motor vehicle having reason to believe it is stolen

0820 THEFT (NOT VEHICLE)

- 08201 Theft from person
- 08202 Theft from shop
- 08203 Theft from vehicle
- 08204 Theft/Unauthorised taking of a pedal cycle
- 08205 Theft of, or interference with, mail, postal matter
- 08206 Theft of other property
- 08207 Theft common
- 08208 Store breaking and theft
- 08209 Theft by agent
- 08210 Theft by person in public service
- 08211 Theft by servant and clerk
- 08212 Theft from a person
- 08213 Theft of a postal matter
- 08214 House breaking and theft
- 08215 Stealing goods in transit

0830 HANDLING STOLEN PROPERTY

- 08301 Handling/ carrying or possession of stolen property
- 08302 In possession of property stolen outside Botswana
- 08303 Receiving stolen property

09 FRAUD, DECEPTION AND RELATED OFFENCES

0910 FRAUD, FORGERY AND FALSE INSTRUMENT OFFENCES

- 09101 Fraud, deception, false pretense offences
- 09102 Forging an instrument to defraud
- 09103 Possession of an article for use in fraud, deception or extortion
- 09104 Falsification of accounts
- 09105 Offences under the Companies Act
- 09106 Offences under the Investment Intermediaries Act
- 09107 Offences under the Stock Exchange Act
- 09108 Forging licenses
- 09109 Forgery and uttering
- 09110 Making documents without authority

0920 OTHER FRAUD

- 09201 Money laundering
- 09202 Embezzlement
- 09203 Fraud against the country
- 09204 Importation/Sale/Supply of tobacco
- 09205 Fraudulent appropriation of power

0930 COUNTERFEITING CURRENCY AND RELATED OFFENCES

- 09301 Counterfeiting notes and coins

0940 CORRUPTION

- 09401 Corruption (involving public office holder)
- 09402 Official corruption
- 09403 Removal of property under lawful seizure

10 CONTROLLED DRUG OFFENCES

1010 IMPORTATION/MANUFACTURE OF DRUGS

- 10101 Importation of drugs
- 10102 Cultivation or manufacture of drugs

1020 POSSESSION OF DRUGS

- 10201 Possession of drugs for sale or supply
- 10202 Possession of drugs for personal use

1030 OTHER DRUG OFFENCES

- 10301 Forged or altered prescription offences
- 10302 Failure to produce order, prescription, or drug book for inspection
- 10303 Possessing or using a habit forming drug
- 10304 Failure to comply with conditions of drug permit or license
- 10305 Dealing in a habit forming drugs
- 10306 Obstruction under the Drugs Act

11 WEAPONS AND EXPLOSIVES OFFENCES**1110 EXPLOSIVES, CHEMICAL WEAPONS OFFENCES**

- 11101 Causing an explosion
- 11102 Making of explosives
- 11103 Possession of explosives
- 11104 Chemical weapons offences

1120 FIREARMS OFFENCES

- 11201 Discharging a firearm
- 11202 Going armed in public
- 11203 Owning an arm without license
- 11204 Failure to comply with the demands of production of arm license or certificate
- 11205 Dangerous acts with arms
- 11206 Having in possession arms or ammunition while convicted of offence under this act
- 11207 Making false statement for the purpose of procuring registration as an arm dealer
- 11208 Making false entry in an arm dealers registry
- 11209 Failing to keep an arm or ammunition under safe custody
- 11210 Failure to report lost or stolen arm/ammunition
- 11211 Importing arms or ammunition without permit
- 11212 Exporting arms or ammunition without permit
- 11213 Possessing unregistered arms or ammunitions
- 11214 Selling arm or ammunition
- 11215 Disposing arms or ammunitions
- 11216 Transferring arms or ammunitions
- 11217 Manufacturing arms or ammunitions without Manufacturer' license
- 11218 Possessing special types of arms or ammunition
- 11219 Importing arms or ammunitions of war without permit
- 11220 Possessing unregistered arms or ammunition of war without permit
- 11221 Owning an arm or ammunition of war/arm without license
- 11222 Use of arms to resist arrest

1130 OFFENSIVE WEAPONS OFFENCES (NEC)

- 11301 Possession of offensive weapons (not firearms)

1140 FIREWORKS OFFENCES

- 11401 Fireworks Offences (for sale, IGNITING etc.)

12 DAMAGE TO PROPERTY AND TO THE ENVIRONMENT**1210 CRIMINAL DAMAGE**

- 12101 Arson
- 12102 Criminal damage (not arson)
- 12103 Malicious injury to property

1220 ENVIRONMENTAL DAMAGE

- 12201 Litter offences

13 PUBLIC ORDER AND OTHER SOCIAL CODE OFFENCES**1310 DISORDERLY CONDUCT**

- 13101 Affray/Riot/Violent disorder
- 13102 Public order offences
- 13103 Drunkenness offences
- 13104 Air rage-disruptive or drunken behaviour on aircraft

1320 TRESPASS OFFENCES

- 13201 Forcible entry and occupation (not burglary)
- 13202 Trespass on lands or enclosed areas
- 13203 Criminal trespass

1330 LIQUOR LICENSING OFFENCES

- 13301 Failure to keep register being a hotel liquor license premises
- 13302 Carrying on other businesses on licensed premises
- 13303 Altering licensed premises without approval by the licensing authority
- 13304 Selling intoxicating liquor without license
- 13305 Selling liquor to young persons
- 13306 Obstructing a health inspector to carry out his/her duty
- 13307 Selling intoxicating liquor to a drunken person
- 13308 Procuring drink for drunken person
- 13309 Making a false entry or statement in a hotel register
- 13310 Departing from licensed premises without paying
- 13311 Drinking liquor in a bottle store or on a prohibited area
- 13312 Failure to provide meals and accommodation being a hotel keeper
- 13313 Obstruct/resist licensed premises to be closed by authorised person
- 13314 Refusing to leave licensed premises
- 13315 Adulterating liquor
- 13316 Permitting licensed premises to be a brothel
- 13317 Making business or trading without a license/certificate
- 13318 Willingly making a false statement in a document
- 13319 Keeping wholesale quantities of intoxicating liquor on licensed premises
- 13320 Other Liquor licensing offences
- 13321 Other Registered clubs offences
- 13322 Other restaurant offences

1340 PROSTITUTION OFFENCES

- 13401 Brothel keeping
- 13402 Organisation of prostitution
- 13403 Prostitution, including soliciting etc.

1350 REGULATED BETTING/MONEY, COLLECTION/TRADING OFFENCES

- 13501 Offences under the Betting Acts
- 13502 Collecting money without permit, unauthorised collection
- 13503 Offences under Gaming and Lotteries Acts
- 13504 Permit/License offences for casual/street trading

1360 SOCIAL CODE OFFENCES (NEC)

- 13601 Bestiality
- 13602 Indecency
- 13603 Allowing a child (under 16 years) to beg
- 13604 Bigamy
- 13605 Begging
- 13606 Rogues and vagabonds

14 ROAD AND TRAFFIC OFFENCES (NEC)**1410 DRIVING LICENCE/INSURANCE OFFENCES**

- 14101 Driving license-failure to have, produce, etc.
- 14102 Insurance-failure to have, produce, display, etc.
- 14103 Driving an unlicensed motor vehicle.
- 14104 Failure to display road license.

1420 VEHICLE TAX/REGISTRATION OFFENCES

- 14201 Owning or driving unregistered motor vehicle
- 14202 Misuse of Trade License
- 14203 Failure to comply with conditions of motor dealer's license

1430 ROADWORTHINESS/REGULATORY OFFENCES

- 14301 Misuse of trailers, weight and other offences
- 14302 Obstruction under Road Traffic Acts
- 14303 Driving motor vehicle with worn out tires
- 14304 Driving motor vehicle with insufficient hand brake
- 14305 Driving motor vehicle with insufficient foot brake
- 14306 Drawing a trailer with inefficient braking foot brake
- 14307 Drawing motor vehicle not equipped with mudguard
- 14308 Driving motor vehicle with defective warning device
- 14309 Riding a bicycle with defective warning device
- 14310 Driving motor vehicle with shattered windscreen
- 14311 Driving motor vehicle with defective wipers
- 14312 Driving motor vehicle without mirrors, speedometer, fuel cap
- 14313 Driving motor vehicle with defective head lamps
- 14314 Driving motor vehicle with defective park lamps
- 14315 Driving motor vehicle with defective rear/tail lamps
- 14316 Driving motor vehicle with defective stop lights
- 14317 Driving motor vehicle with defective registration lamps
- 14318 Riding a bicycle at night without lamps
- 14319 Operating an animal drawn vehicle without a lamp
- 14320 Driving a motor vehicle with defective indicator
- 14321 Driving a motor vehicle with height exceeding 4.1 meters
- 14322 Riding bicycle on a dangerous position
- 14323 Failure to keep record of the driver
- 14324 Spanning more than two donkeys abreast
- 14325 Walking along / across the road in a dangerous manner
- 14326 Making noise / sounding instrument for the purpose of touting
- 14327 Permitting incompetent person to drive animal drawn vehicle
- 14328 Leaving animal drawn vehicle unattended
- 14329 Failure to stop at a level crossing
- 14330 Failure to close the gate
- 14331 Ungazzeted identification plates
- 14332 Carrying passengers while a learner
- 14333 Failure to display red letter L
- 14334 Failure to obey warning sign on projecting loads overloading goods
- 14335 Carrying goods or passengers in a manner likely to obscure driver's view.
- 14336 Driving motor vehicle exceeding 10.5 meters during prohibited hours
- 14337 Failure to wear a protective helmet
- 14338 Failure to display number plates
- 14339 Driving a motor unaccompanied whilst a learner
- 14340 Permitting unlicensed person to drive
- 14341 Carrying a passenger, animal or article in front of a motor cycle driver
- 14342 Riding a motor vehicle in a dangerous position
- 14343 Causing damage to a motor vehicle
- 14344 Tampering with a motor vehicle
- 14345 Taking a motor vehicle without authority
- 14346 Leaving a motor vehicle unattended
- 14347 Obstructing a police officer
- 14348 Applying for a license without disclosing endorsement
- 14349 Failure to obey police direction or signal
- 14350 Failure to obey traffic signs or signals
- 14351 Careless driving (other vehicles)
- 14352 Reckless Driving (other vehicles)
- 14353 Drunken driving of other vehicles (not motor vehicles)
- 14354 Fraudulent use of imitated plates document or mark
- 14355 Giving false information to public servant
- 14356 Failure to stop and report an accident
- 14357 Failure to provide breath or blood specimen
- 14358 Leaving cattle unattended on main road
- 14359 Playing games obstructing road ushers
- 14360 Lead, drive animal or vehicle on foot path
- 14361 Fraudulent application for driving license
- 14362 Failure to stop and report a fatal accident
- 14363 In charge of a motor vehicle whilst unfit through drinks

- 14364 Reckless drinking (motor vehicle)
- 14365 Using a motor vehicle in such condition as to constitute danger to the public
- 14366 Traffic in obscene publication
- 14367 Other road offences

1440 ROAD TRANSPORT/PUBLIC SERVICE VEHICLE OFFENCES

- 14401 Road Transport - carriage of goods offences
- 14402 Overloading passengers in a P.S.V
- 14403 Using a P.S.V without a P.S.V driving license
- 14404 Operating P.S.V in unhygienic condition
- 14405 Driving a P.S.V without a fire extinguisher
- 14406 Conducting without conducting P.S.V
- 14407 Driving P.S.V without P.S.V driving license
- 14408 Driving P.S.V without due care and attention
- 14409 P.S.V reckless driving
- 14410 Disobeying P.S.V. driver /conductor not to enter because it is full
- 14411 Public Service Vehicle offences
- 14412 Light rail offences (Luas)

15 OFFENCES AGAINST GOVERNMENT, JUSTICE PROCEDURES AND ORGANISATION OF CRIME

1510 OFFENCES AGAINST GOVERNMENT AND ITS AGENTS

- 15101 Treason
- 15102 Breaches of Offences Against the State Acts
- 15103 Breaches of Official Secrets Act
- 15104 Impersonating member of An Garda Síochána
- 15105 Electoral offences including personation
- 15106 Public mischief-annoying phone calls, wasting police time
- 15107 Criminal Assets Bureau offences
- 15108 Non compliance with Garda direction
- 15109 Destruction of statutory document
- 15110 Traffic in obscene publication
- 15111 Abuse of office
- 15112 False assumption of authority
- 15113 False information to a public officer
- 15114 Personating persons employed in public service
- 15115 Tampering with public officers
- 15116 Undermining authority of a public service
- 15117 Refusal to be searched by authorized person
- 15118 Holding any interest without permission from the minister

1520 ORGANISATION OF CRIME AND CONSPIRACY TO COMMIT CRIME

- 15201 Criminal organization offences (organized crime)
- 15202 Conspiracy to commit a crime

1530 PERVERTING THE COURSE OF JUSTICE

- 15301 Perjury
- 15302 Interfering with a jury (embracery)
- 15303 Assisting offenders
- 15304 Public mischief, pervert course of justice, conceal offence
- 15305 Obstructing court officers
- 15306 Destroying evidence
- 15307 Interfering with a witness

1540 OFFENCES WHILE IN CUSTODY AND RELATED OFFENCES

- 15401 Escape or help to escape from custody
- 15402 Prison offences

1550 BREACH OF JUSTICE/COURT ORDER

- 15501 Breach of Domestic Violence Order (protection, safety, barring)
- 15502 Breach of the peace
- 15503 Breach of bail
- 15504 Failure to comply under Sex Offenders Act
- 15505 Breach of order under Family Law Act
- 15506 Dealing in any assets subject to an order of the court
- 15507 Other failure to comply with court order, jury summons, warrant etc.

16 OFFENCES NOT ELSEWHERE CLASSIFIED (NEC)**1610 IMPORTATION/CONTROL/WELFARE OF ANIMALS OFFENCES**

- 16101 Illegal importation of animals
- 16102 Control of horses offences
- 16103 Dog ownership offences (license, control etc.)
- 16104 Injuring animals
- 16105 Killing animals with intent to steal
- 16106 Unlawful wounding
- 16107 Offences against animals

1620 FISHERIES/MARITIME OFFENCES

- 16201 Breaches of fishing quota/related regulation

1630 USE OF DATA, ELECTRONIC COUNTERFEIT AND BROADCASTING OFFENCES

- 16301 Unauthorised accessing of data
- 16302 Recording, possession, distribution of counterfeit material
- 16303 Unauthorised broadcasting and illegal signal reception

1640 IMMIGRATION OFFENCES/ CARRIER LIABILITIES

- 16401 Overstaying in Botswana
- 16402 Making a contradictory statement for the purpose of entering Botswana
- 16403 Unlawful entry in Botswana
- 16404 Failure to comply with visit conditions
- 16405 Failure to transmit residential permit to the board
- 16406 Failure to transmit residential permit to the minister
- 16407 Re- entering Botswana as a prohibited immigrant
- 16408 Aiding or abetting unlawful entry
- 16409 Forging certificates or documents for the purpose of entering Botswana
- 16410 Uttering or using false certificate or document for the purpose of entering Botswana
- 16411 Unlawful possession of residential permit
- 16412 Delivering residential permit, passport or other I.D document for the use by other person
- 16413 Forging or altering unlawfully a residential permit, passport or any I.D document

1650 STOCK THEFT

- 16501 Duty to ascertain bonafides of seller of stock
- 16502 Trespass with intent to steal
- 16503 Night delivery of stock
- 16504 Making false statement in a certificate
- 16505 Failure to produce removal certificate
- 16506 Tampering with stock or produce
- 16507 Possession of stolen stock
- 16508 Dealing in stolen stock or produce
- 16509 Stealing stock or produce

1660 PRECIOUS STONES OFFENCES

- 16601 Failure to report discovery of precious stones
- 16602 Entering any protection area when the exclusion order is still in force
- 16603 Making false statement in order to apply for dealers license or permit
- 16604 Signing false notes of sale and purchase
- 16605 Dealing in rough or uncut precious stone to keep register of transaction
- 16606 Failure to deliver picked or found precious stone to the police station
- 16607 Dealing in precious stones during nighttime, Sunday or holidays
- 16608 Making false declaration of discovery of precious stones

- 16609 Placing of precious stones where not naturally found
- 16610 Unlawful dealing in and possession of rough or uncut precious stones
- 16611 Purchases from or sale to unauthorized person
- 16612 Failure to report imported precious stone in the district

1670 MISCELLANEOUS OFFENCES

- 16701 Abortion
- 16702 Procuring or assisting in abortion
- 16703 Concealment of birth
- 16704 Destroying/Disposing of a dead body
- 16705 Pawn broking offences
- 16706 Offences in connection with rail travel
- 16707 Employment permit offences (relating to non-Batswana national)
- 16708 Idle and disorderly person
- 16711 Cheating
- 16712 Entering dwelling with intent to commit offence
- 16713 Obtaining by false pretenses
- 16715 Attempt to commit an offence
- 16716 Unnatural offence
- 16717 Accessory after fact

