

Statistics Botswana
Private Bag 0024, Gaborone, Botswana
Tel: (267) 3671300, Fax (267) 3952201,
Email: csobots@gov.bw, Website: www.cso.gov.bw

All correspondence should be addressed to Statistician General

CONSUMER PRICE INDEX - OCTOBER 2012

CONTENTS

COMMENTARY

- 1. Section 1: Headline Inflation**
- 2. Section 2: Core Inflation**

CHARTS

- 1. National Rates of Inflation, January 2010 – October 2012**
- 2. Monthly Changes in the Cost-of-Living Index, January 2010 – October 2012**
- 3. Non-Tradable Inflation Rates, January 2010 – October 2012**
- 4. Tradable Inflation Rates, January 2010 - October 2012**

TABLES

- 1. Cost-of-Living Index Series (January 2010 – October 2012)**
- 2. National Cost-of-Living Group and Section Indices**
- 3. Cost-of-Living Index by Tradability (January 2010 – October 2012)**
- 4. Core Inflation Rates**
- 5. Annual average inflation rates 2008-2011**

GLOSSARY

Contact Statistician: Phaladi Labobedi Tel: 3934968 Ext: 365/378

COMMENTARY

Section 1: Headline Inflation

In October 2012, the national year-on-year inflation remained unchanged at 7.1 percent, same as in September 2012. However, the cities and towns' inflation rate rose by 0.3 of a percentage point, from 7.2 percent in September to 7.5 percent in October. The urban villages' inflation rate went down by 0.2 of a percentage point, from 7.0 percent in September to 6.8 percent in October. The rural villages' inflation rate stood at 6.9 percent in October, up by 0.2 of a percentage point from the September 2012 rate of 6.7 percent.

The October national Consumer Price Index was 162.8, registering an increase of 0.5 percent on the September index of 162.1. The rural villages' index went up from 164.2 to 165.3, recording an increase of 0.7 percent. The cities and towns' index rose by 0.5 percent, from 161.9 to 162.6 between the two months, while the urban villages' index moved from 161.2 to 161.7 between September and October, recording an increase of 0.3 percent.

Group indices were stable between September and October, recording movements of less than 1.0 percent except for the *Alcoholic Beverages, Tobacco & Narcotics* group index which recorded an increase of 1.8 percent.

The *Alcoholic Beverages, Tobacco & Narcotics* group index rose by 1.8 percent, from 206.9 to 210.7 between the two months. This was due to increases in the constituent section indices of *Alcoholic Beverages (2.0 percent)* and *Tobacco (0.7 percent)*. The rise in the *Alcoholic Beverages* section index was largely due to a five (5) percent increase in alcohol levy which effected on the 1st October 2012.

The *Restaurants & Hotels* group index registered an increase of 0.8 percent from 199.3 in September to 201.0 in October. The increase was a result of the constituent section index of *Restaurants, Café's and the Like (0.9 percent)*.

The *Food & Non-Alcoholic Beverages* index group moved from 181.7 to 182.8, registering an increase of 0.6 percent between September and October. The increase for the month under review was attributed to the general rise in food prices.

The *All-Tradable* inflation rate for October stood at 8.2 percent, up by 0.1 of a percentage point on the September rate of 8.1 percent. The *Domestic Tradable* inflation rate recorded an increase of 0.5 of a percentage point over the period, from 8.2 to 8.7 percent. The *Imported Tradable* inflation rate went down by 0.2 of a percentage point, from 8.0 percent in September to 7.8 percent in October, while the *Non-Tradable* inflation rate registered a drop of 0.1 of a percentage point, from 4.4 percent in September to 4.3 percent in October.

The *All-Tradable* index recorded an increase of 0.6 percent, from 168.9 in September to 169.9 in October. The *Domestic Tradable* index rose by 0.9 percent, from 179.9 in September to 181.6 in October. The *Imported Tradable* index went up by 0.4 percent, from 163.4 to 164.0 within the same period, whereas the *Non-Tradable* index recorded an increase of 0.2 percent, from 146.1 in September to 146.3 in October.

Section 2: Core Inflation

The Trimmed Mean Core Inflation rate stood at 6.7 percent in October, an increase of 0.2 of a percentage point from 6.5 percent in September. The Core Inflation rate by exclusion went up by 0.1 of a percentage point, from 6.5 to 6.6 percent between September 2012 and October 2012.

Chart 1: National Inflation Rate 2010 - 2012

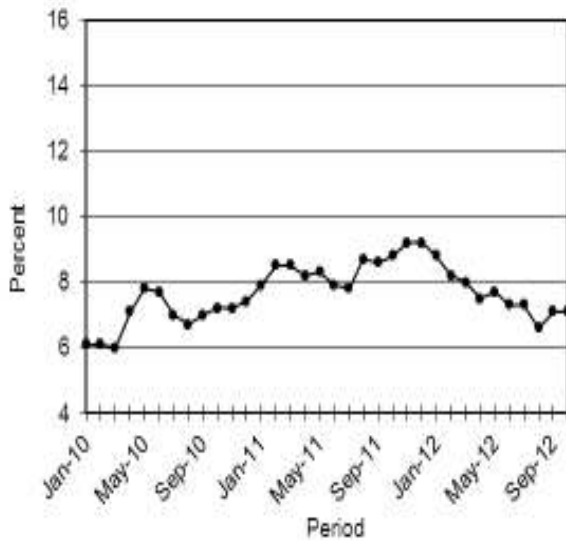


Chart 2: Monthly Changes in Cost-of-Living Index 2010 - 2012

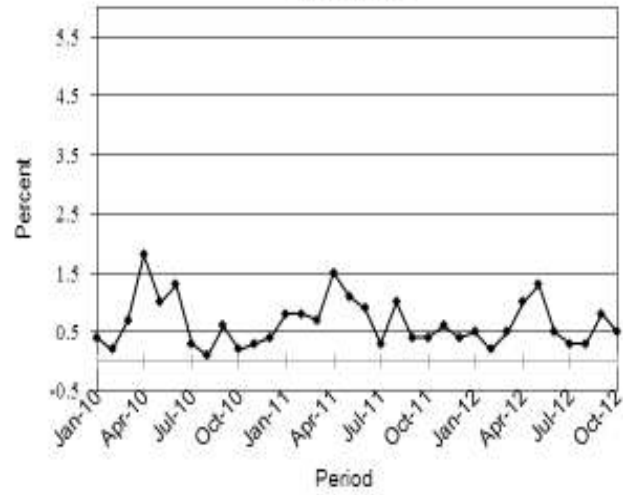


Chart 3: Non-Tradable Inflation 2010 - 2012

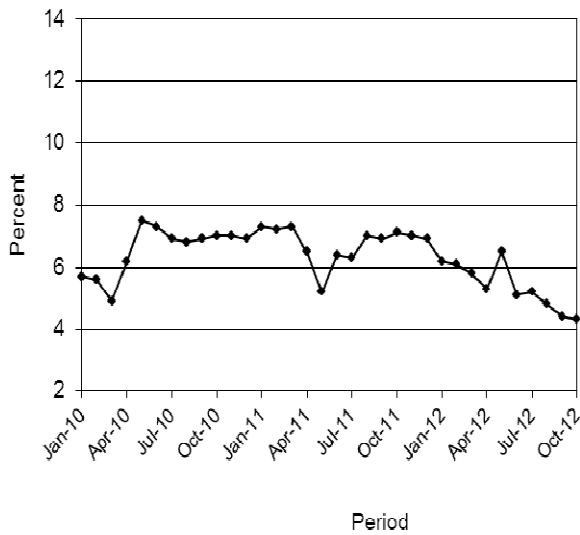
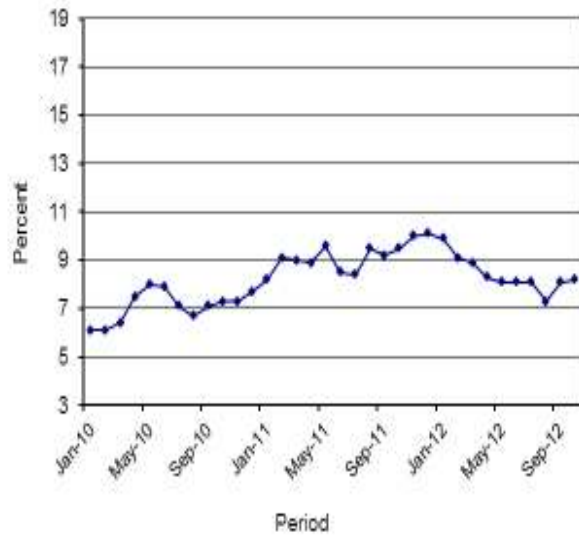


Chart 4: Tradable Inflation 2010 - 2012



Maj

A.N. Majelantle
 Acting Statistician General
 15th November 2012

TABLE 1: COST OF LIVING INDEX (September 2006 =100.0)

		Food	Alcohol and Tobacco	Clothing and Footwear	Housing	Furni- ture etc	Health	Trans- port	Communi- cation	Rec. & Culture	Educatio- n	Rest. & Hotels	Other
Weights		21.84	9.29	7.52	11.46	6.76	2.71	18.98	3.01	2.22	3.37	3.27	9.57
(1)	(2)	(3)	(4)	(5)	(6)	(7)	(8)	(9)	(10)	(11)	(12)	(13)	(14)
2010	Jan	151.1	165.8	116.9	119.9	130.6	124.9	120.6	94.6	109.9	120.4	155.6	114.4
	Feb	151.1	166.0	117.3	120.0	131.2	125.2	121.0	94.6	110.3	120.4	156.5	114.6
	Mar	152.4	167.6	118.9	121.2	133.1	125.4	121.2	94.6	110.8	120.4	158.3	115.0
	Apr	154.4	174.1	119.9	121.8	134.3	127.3	123.4	95.4	111.1	120.4	162.7	119.5
	May	156.0	176.7	120.5	126.3	135.0	127.6	123.6	95.4	111.4	120.5	164.4	119.7
	Jun	156.1	177.4	121.4	126.8	137.1	127.8	130.2	96.4	111.5	120.5	165.9	120.8
	July	156.4	177.4	122.9	127.3	138.0	128.1	130.3	96.4	115.6	120.5	166.6	121.0
	Aug	156.8	177.6	123.6	127.5	138.5	128.2	129.6	96.4	115.8	120.5	167.5	121.1
	Sept	156.7	179.1	125.0	127.7	139.3	128.3	131.6	96.4	116.1	120.5	168.8	121.4
	Oct	156.7	179.7	126.3	127.9	139.6	128.4	131.7	96.4	116.5	120.5	170.6	121.5
	Nov	157.2	180.4	127.4	128.1	140.4	128.4	131.8	96.4	116.7	120.5	171.8	121.5
	Dec	157.6	182.1	127.1	128.8	141.7	128.6	132.2	96.4	116.9	120.5	171.9	121.7
2011	Jan	158.2	183.4	127.5	129.1	142.3	128.7	133.7	96.4	117.1	133.2	172.7	122.6
	Feb	159.1	183.9	127.9	129.4	142.9	128.8	137.5	96.4	117.6	133.2	172.9	122.6
	Mar	160.5	186.0	128.5	130.9	144.6	129.1	137.7	96.4	118.5	133.2	173.7	122.8
	Apr	164.4	188.5	131.0	131.1	145.3	133.0	139.0	96.4	123.4	133.2	175.5	125.7
	May	165.8	191.3	132.1	131.8	146.7	133.3	142.8	91.2	124.1	133.2	179.3	126.1
	Jun	166.6	191.9	133.1	137.6	148.9	133.6	143.3	91.2	124.4	133.2	182.5	126.6
	Jul	167.0	192.2	134.4	138.2	149.5	133.6	143.4	91.2	124.5	133.2	183.4	126.7
	Aug	167.9	192.4	135.1	138.9	150.4	133.7	148.7	91.2	124.7	133.2	183.7	126.8
	Sept	168.8	192.4	135.8	140.0	152.9	133.9	148.8	91.2	124.8	133.2	184.5	126.9
	Oct	169.8	192.8	136.4	140.6	153.9	136.0	149.4	91.2	125.3	133.2	184.6	127.1
	Nov	170.7	192.9	137.2	141.2	154.3	136.1	152.6	91.2	125.3	133.2	185.3	127.2
	Dec	171.8	192.8	138.8	141.8	155.2	136.4	152.6	91.2	125.4	133.2	186.0	127.2
2012	Jan	172.3	193.5	139.6	141.9	155.6	136.5	153.4	91.2	125.6	141.5	187.1	127.7
	Feb	173.3	193.6	140.2	142.0	155.9	136.9	153.5	91.2	125.7	141.5	187.5	127.7
	Mar	174.6	196.0	140.7	142.4	156.6	137.2	153.5	91.2	125.9	141.7	189.5	127.7
	Apr	177.0	201.2	140.9	142.4	157.5	141.0	153.8	91.7	130.2	141.7	192.7	128.2
	May	178.4	204.7	141.3	147.4	158.1	141.3	157.8	91.7	130.3	141.7	193.7	128.3
	Jun	179.6	205.2	141.9	148.6	160.1	141.5	158.2	91.7	130.4	141.7	194.9	128.4
	Jul	180.4	205.8	142.5	148.4	160.6	142.1	159.3	91.7	130.9	141.7	195.3	128.6
	Aug	181.0	206.1	144.0	148.4	161.2	142.3	159.9	91.7	131.8	141.7	196.1	128.2
	Sept	181.7	206.9	145.5	148.5	161.9	142.6	164.2	91.7	132.1	141.7	199.3	128.2
	Oct	182.8	210.7	146.0	148.4	162.4	142.7	164.4	91.7	132.3	141.7	201.0	128.3
% Change on Last month		0.6	1.8	0.4	(0.1)	0.3	0.1	0.1	0.0	0.2	0.0	0.8	0.0

TABLE 1: COST OF LIVING INDEX(Cont.)

	All Items Index	National Inflation Rate	Monthly Change	Towns & Cities Index	Urban Village Index	Rural Villages Index	Annual Inflation		
		%	%	47.33	33.76	18.91	Towns & Cities %	Urban Villages %	Rural %
2010 Jan	131.4	6.1	0.4	129.8	131.2	135.8	6.7	5.9	5.1
Feb	131.7	6.1	0.2	130.1	131.2	136.4	6.6	5.8	5.4
Mar	132.6	6.0	0.7	131.0	131.8	138.3	6.5	5.2	5.9
Apr	135.0	7.1	1.8	133.5	134.0	140.4	7.9	6.3	6.6
May	136.3	7.8	1.0	134.8	135.4	141.6	8.7	7.2	6.9
Jun	138.1	7.7	1.3	137.0	137.0	142.8	8.5	7.0	7.0
July	138.6	7.0	0.3	137.4	137.6	143.2	7.9	6.4	6.2
Aug	138.7	6.7	0.1	137.8	137.6	142.7	7.7	5.9	5.6
Sept	139.4	7.0	0.6	138.6	138.7	143.0	8.0	6.4	5.6
Oct	139.7	7.2	0.2	138.8	139.1	143.0	8.0	6.8	5.9
Nov	140.1	7.2	0.3	139.5	139.3	143.2	8.2	6.7	5.4
Dec	140.6	7.4	0.4	139.8	139.9	144.0	8.1	7.2	6.2
2011 Jan	141.8	7.9	0.8	141.3	141.0	144.5	8.8	7.5	6.4
Feb	142.9	8.5	0.8	142.4	142.2	145.5	9.5	8.4	6.6
Mar	143.8	8.5	0.7	143.2	143.2	146.6	9.3	8.7	6.0
Apr	146.0	8.2	1.5	145.3	145.5	148.8	8.9	8.5	6.0
May	147.6	8.3	1.1	146.9	146.9	150.5	9.0	8.5	6.2
Jun	149.0	7.9	0.9	148.4	148.1	152.0	8.3	8.1	6.4
Jul	149.3	7.8	0.3	148.9	148.3	152.3	8.4	7.7	6.3
Aug	150.8	8.7	1.0	150.4	149.8	153.4	9.1	8.9	7.5
Sept	151.4	8.6	0.4	150.9	150.6	153.9	8.9	8.6	7.6
Oct	152.0	8.8	0.4	151.4	151.5	154.6	9.0	8.9	8.1
Nov	153.0	9.2	0.6	152.4	152.7	155.0	9.3	9.6	8.2
Dec	153.5	9.2	0.4	152.9	153.1	155.9	9.4	9.4	8.3
2012 Jan	154.3	8.8	0.5	153.5	154.0	157.0	8.6	9.2	8.6
Feb	154.7	8.2	0.2	153.7	154.4	157.6	8.0	8.6	8.3
Mar	155.4	8.0	0.5	154.3	155.1	158.6	7.8	8.3	8.2
Apr	156.9	7.5	1.0	156.0	156.6	159.8	7.3	7.7	7.4
May	159.0	7.7	1.3	158.6	158.2	161.3	8.0	7.7	7.2
Jun	159.8	7.3	0.5	159.3	158.9	162.5	7.4	7.3	6.9
Jul	160.3	7.3	0.3	159.7	159.5	163.2	7.3	7.6	7.1
Aug	160.8	6.6	0.3	160.0	160.2	163.6	6.4	6.9	6.6
Sept	162.1	7.1	0.8	161.9	161.2	164.2	7.2	7.0	6.7
Oct	162.8	7.1	0.5	162.6	161.7	165.3	7.5	6.8	6.9
% Change on last month	0.5			0.5	0.3	0.7			

Table 2: National Cost-of-Living Group & Section Indices (September 2006 = 100.0)

Group Section	Weights	This month	Last month	3 months ago	6 months ago	12 months ago	Percentage Change on:			
		Oct 2012	Sept 2012	Jul 2012	Apr 2012	Oct 2011	Last month	3 months ago	6 months ago	12 months ago
1 Food & Non-Alcoholic Beverages	21.84	182.8	181.7	180.4	177.0	169.8	0.6	1.3	3.3	7.6
1.1 Bread & Cereals	6.51	181.5	180.6	180.2	174.9	163.3	0.5	0.7	3.8	11.1
1.2 Meat (Fresh, Chilled & Frozen)	3.15	186.4	185.3	184.0	183.0	176.1	0.6	1.3	1.8	5.8
1.3 Fish (Fresh, Chilled & Frozen)	0.20	183.6	182.1	179.9	175.0	170.1	0.8	2.1	4.9	7.9
1.4 Milk, Cheese & Milk Products	2.19	183.4	183.3	182.5	180.2	177.7	0.0	0.5	1.8	3.2
1.5 Oils & Fats	0.90	218.9	217.6	216.5	213.5	206.2	0.6	1.1	2.5	6.2
1.6 Fruit	0.67	129.8	129.0	126.1	125.0	115.2	0.6	2.9	3.8	12.6
1.7 Vegetables	1.94	183.7	180.3	177.9	174.2	173.0	1.9	3.2	5.4	6.2
1.8 Sugar, Jam, Honey, Chocolate & Confectionery	1.36	186.5	185.9	184.2	180.8	173.9	0.3	1.2	3.1	7.2
1.9 Food not else where Classified	2.36	183.4	182.1	179.7	177.0	173.0	0.7	2.1	3.6	6.0
1.10 Coffee, Tea & Cocoa	0.63	202.2	201.8	201.8	195.3	189.4	0.2	0.2	3.5	6.7
1.11 Mineral Waters, Soft Drinks, Fruits & Veg. Juices	1.94	171.6	170.5	168.5	166.2	158.1	0.6	1.8	3.2	8.5
2 Alcoholic Beverages, Tobacco & Narcotics	9.29	210.7	206.9	205.8	201.2	192.8	1.8	2.4	4.7	9.2
2.1 Alcoholic Beverages	8.09	210.7	206.6	205.7	200.9	192.7	2.0	2.5	4.9	9.4
2.2 Tobacco	1.20	210.2	208.7	206.8	203.2	194.0	0.7	1.6	3.4	8.3
3 Clothing and Footwear	7.52	146.0	145.5	142.5	140.9	136.4	0.4	2.5	3.6	7.0
3.1 Clothing	3.33	165.1	164.6	161.9	160.5	154.7	0.3	2.0	2.9	6.7
3.2 Other articles of Clothing	1.82	132.5	131.6	127.4	126.5	121.5	0.6	4.0	4.7	9.0
3.3 Cleaning, Repair & Hire	0.03	180.6	180.3	177.4	170.9	166.9	0.2	1.8	5.7	8.2
3.4 Footwear	2.34	128.9	128.5	126.2	123.9	121.6	0.3	2.1	4.1	6.0
4 Housing, Water, Electr. Gas & Other Fuels	11.46	148.4	148.5	148.4	142.4	140.6	(0.1)	(0.0)	4.2	5.6
4.1 Rent paid by Tenants	5.68	131.1	131.1	130.8	128.4	126.8	0.0	0.2	2.1	3.4
4.2 Materials for Maintenance & Repair of dwellings	2.57	143.9	143.7	142.4	141.9	140.1	0.2	1.0	1.4	2.7
4.3 Water Supply & Misc. Services	1.14	151.4	151.4	151.4	102.2	102.2	0.0	0.0	48.2	48.2
4.4 Electricity Gas and other Fuels	2.06	200.0	200.8	202.6	203.8	200.4	(0.4)	(1.3)	(1.9)	(0.2)
5 Furnishing, H/H Equipment & Routine Maintenance	6.76	162.4	161.9	160.6	157.5	153.9	0.3	1.2	3.1	5.6
5.1 Furniture & Furnishing	2.31	137.0	136.6	134.6	133.0	129.7	0.3	1.7	3.0	5.6
5.2 Carpets & Other Floor Coverings	0.04	149.3	149.1	147.2	146.2	144.3	0.1	1.4	2.1	3.4
5.3 Household Textiles	0.44	150.8	150.1	149.0	147.0	142.2	0.5	1.2	2.6	6.1
5.4 Household Appliances	0.69	138.4	137.6	135.9	133.3	131.1	0.5	1.8	3.8	5.6
5.5 Glassware, Tableware & Household Utensils	0.44	172.1	171.6	168.7	162.7	157.8	0.3	2.1	5.8	9.1
5.6 Small Tools, Miscellaneous Accessories	0.06	168.1	167.9	167.0	166.6	162.6	0.1	0.7	0.9	3.3
5.7 Goods & Services for H/hold Maintenance	2.79	189.8	189.3	188.7	184.6	180.7	0.3	0.6	2.8	5.1

**Table 2: National Cost-of-Living Group & Section Indices (September 2006 = 100.0)
(Cont.)**

Group Section	Weights	This	Last	3 months	6 months	12 months	Percentage Change on:			
		month	month	ago	ago	ago	Last	3 months	6 months	12 months
		Oct 2012	Sept 2012	Jul 2012	Apr 2012	Oct 2011	month	ago	ago	ago
6 Health	2.71	142.7	142.6	142.1	141.0	136.0	0.1	0.4	1.2	4.9
6.1 Medical Products, App. & Equip.	0.35	168.0	167.9	164.4	159.7	150.2	0.1	2.2	5.2	11.9
6.2 Out-patient Services	0.66	148.3	148.0	148.0	145.9	131.8	0.2	0.2	1.7	12.5
6.3 Hospital Services	1.71	135.3	135.3	135.3	135.3	134.7	0.0	0.0	0.0	0.4
7 Transport	18.98	164.4	164.2	159.3	153.8	149.4	0.1	3.2	6.9	10.0
7.1 Purchase of Vehicles	5.89	151.2	151.0	150.9	148.9	146.7	0.1	0.2	1.5	3.1
7.2 Operation of Personal Transport	10.92	172.1	171.8	163.5	155.0	148.6	0.1	5.3	11.0	15.8
7.3 Transport Services	2.17	161.1	161.1	160.9	160.9	160.3	0.0	0.1	0.1	0.5
8 Communication	3.01	91.7	91.7	91.7	91.7	91.2	0.0	0.0	0.0	0.6
8.1 Postal Services	0.04	209.9	209.9	209.9	209.9	170.8	0.0	0.0	0.0	22.9
8.2 Telephone & Telefax Equipment	0.74	66.6	66.6	66.6	66.6	66.6	0.0	0.0	0.0	0.0
8.3 Telephone & Telefax Services	2.23	98.0	98.0	97.9	97.9	97.9	0.0	0.0	0.0	0.0
9 Recreation & Culture	2.22	132.3	132.1	130.9	130.2	125.3	0.2	1.1	1.6	5.5
9.1 Audio Visual, Photographic & Info. Proce. Equip.	1.09	105.3	105.0	104.5	103.4	102.5	0.3	0.7	1.9	2.7
9.2 Other Recreational Items & Equip.	0.18	157.8	157.6	150.2	150.2	149.0	0.2	5.1	5.1	5.9
9.3 Recreational & Cultural Services	0.76	149.0	149.0	148.4	148.4	137.5	0.0	0.4	0.4	8.4
9.4 Newspapers, Books & Stationary	0.19	193.9	193.4	191.4	189.9	183.2	0.2	1.3	2.1	5.8
10 Education	3.37	141.7	141.7	141.7	141.7	133.2	0.0	0.0	0.0	6.4
10.1 Pre-Primary & Primary Education	1.10	173.5	173.5	173.5	173.4	154.5	0.0	0.0	0.0	12.3
10.2 Secondary & Tertiary Education	2.26	126.2	126.2	126.2	126.2	122.8	0.0	0.0	0.0	2.8
11 Restaurants & Hotels	3.27	201.0	199.3	195.3	192.7	184.6	0.8	2.9	4.3	8.8
11.1 Restaurants, Cafes and the Like	3.08	203.6	201.9	197.7	195.2	187.1	0.9	3.0	4.3	8.9
11.2 Accommodation Services	0.19	157.4	157.4	155.4	151.5	145.1	0.0	1.3	3.9	8.5
12 Miscellaneous Goods & Services	9.57	128.3	128.2	128.6	128.2	127.1	0.0	(0.2)	0.0	0.9
12.1 Personal Care	0.66	153.3	153.2	151.8	149.1	146.7	0.1	1.0	2.8	4.5
12.2 Personal Effects N.E.C.	0.04	131.6	131.6	127.9	127.1	122.6	0.0	2.9	3.6	7.3
12.3 Social Protection	0.14	147.8	147.8	147.8	147.8	146.8	0.0	0.0	0.0	0.7
12.4 Insurance	6.32	128.9	128.9	129.6	129.6	128.9	0.0	(0.6)	(0.5)	(0.0)
12.5 Financial Services	0.18	143.8	142.8	142.0	138.6	135.5	0.7	1.3	3.8	6.1
12.6 Taxes Licences, Fees	2.24	116.6	116.6	116.6	116.2	114.4	0.0	0.1	0.4	2.0
All-Items Index	100.0	162.8	162.1	160.3	156.9	152.0	0.5	1.6	3.8	7.1

TABLE 3: COST-OF-LIVING INDEX BY TRADABILITY (September 2006 = 100.0)

	All Items		Non-Tradable		Domestic Tradable		Imported Tradable		All Tradable	
	Index	Inflation	Index	Inflation	Index	Inflation	Index	Inflation	Index	Inflation
Weights	100.00		30.92		23.91		45.17		69.08	
2010										
Jan	131.4	6.1	123.8	5.7	149.3	3.0	127.2	8.5	134.6	6.1
Feb	131.7	6.1	124.0	5.6	149.5	2.2	127.4	9.0	134.9	6.1
Mar	132.6	6.0	124.6	4.9	150.5	2.0	128.7	9.3	136.0	6.4
Apr	135.0	7.1	126.9	6.2	153.7	3.5	130.6	10.1	138.3	7.5
May	136.3	7.8	128.7	7.5	154.9	4.2	131.7	10.4	139.5	8.0
Jun	138.1	7.7	129.7	7.3	154.8	4.2	135.1	10.3	141.6	7.9
July	138.6	7.0	129.9	6.9	155.3	3.8	135.7	9.2	142.2	7.1
Aug	138.7	6.7	130.0	6.8	155.3	3.8	135.9	8.5	142.4	6.7
Sept	139.4	7.0	130.9	6.9	155.5	4.3	136.8	8.8	143.1	7.1
Oct	139.7	7.2	131.0	7.0	155.6	4.3	137.3	9.1	143.4	7.3
Nov	140.1	7.2	131.2	7.0	155.9	4.3	137.9	9.0	144.0	7.3
Dec	140.6	7.4	131.6	6.9	156.5	5.0	138.4	9.3	144.5	7.7
2011										
Jan	141.8	7.9	132.8	7.3	158.2	5.9	139.2	9.5	145.6	8.2
Feb	142.9	8.5	132.9	7.2	158.9	6.2	141.3	10.9	147.2	9.1
Mar	143.8	8.5	133.7	7.3	160.1	6.4	142.2	10.5	148.2	9.0
Apr	146.0	8.2	135.2	6.5	162.2	5.5	144.8	10.9	150.6	8.9
May	147.6	8.3	135.3	5.2	163.5	5.5	147.6	12.1	152.9	9.6
Jun	149.0	7.9	138.0	6.4	164.8	6.5	148.1	9.6	153.6	8.5
Jul	149.3	7.8	138.0	6.3	165.4	6.5	148.6	9.5	154.2	8.4
Aug	150.8	8.7	139.0	7.0	165.7	6.7	150.9	11.1	155.8	9.5
Sept	151.4	8.6	139.9	6.9	166.3	6.9	151.3	10.6	156.3	9.2
Oct	152.0	8.8	140.3	7.1	167.0	7.4	152.1	10.8	157.0	9.5
Nov	153.0	9.2	140.4	7.0	167.5	7.4	153.9	11.6	158.4	10.0
Dec	153.5	9.2	140.7	6.9	168.0	7.4	154.6	11.8	159.1	10.1
2012										
Jan	154.3	8.8	141.1	6.2	169.6	7.2	155.3	11.5	160.0	9.9
Feb	154.7	8.2	141.0	6.1	170.4	7.3	155.7	10.2	160.6	9.1
Mar	155.4	8.0	141.4	5.8	172.2	7.6	156.1	9.8	161.4	8.9
Apr	156.9	7.5	142.4	5.3	176.0	8.5	156.7	8.2	163.2	8.3
May	159.0	7.7	144.2	6.5	178.0	8.9	158.9	7.7	165.3	8.1
Jun	159.8	7.3	145.0	5.1	178.7	8.4	159.7	7.8	166.0	8.1
Jul	160.3	7.3	145.2	5.2	179.0	8.2	160.5	8.0	166.7	8.1
Aug	160.8	6.6	145.7	4.8	179.3	8.2	161.1	6.7	167.2	7.3
Sept	162.1	7.1	146.1	4.4	179.9	8.2	163.4	8.0	168.9	8.1
Oct	162.8	7.1	146.3	4.3	181.6	8.7	164.0	7.8	169.9	8.2
% Change on last month	0.5		0.2		0.9		0.4		0.6	

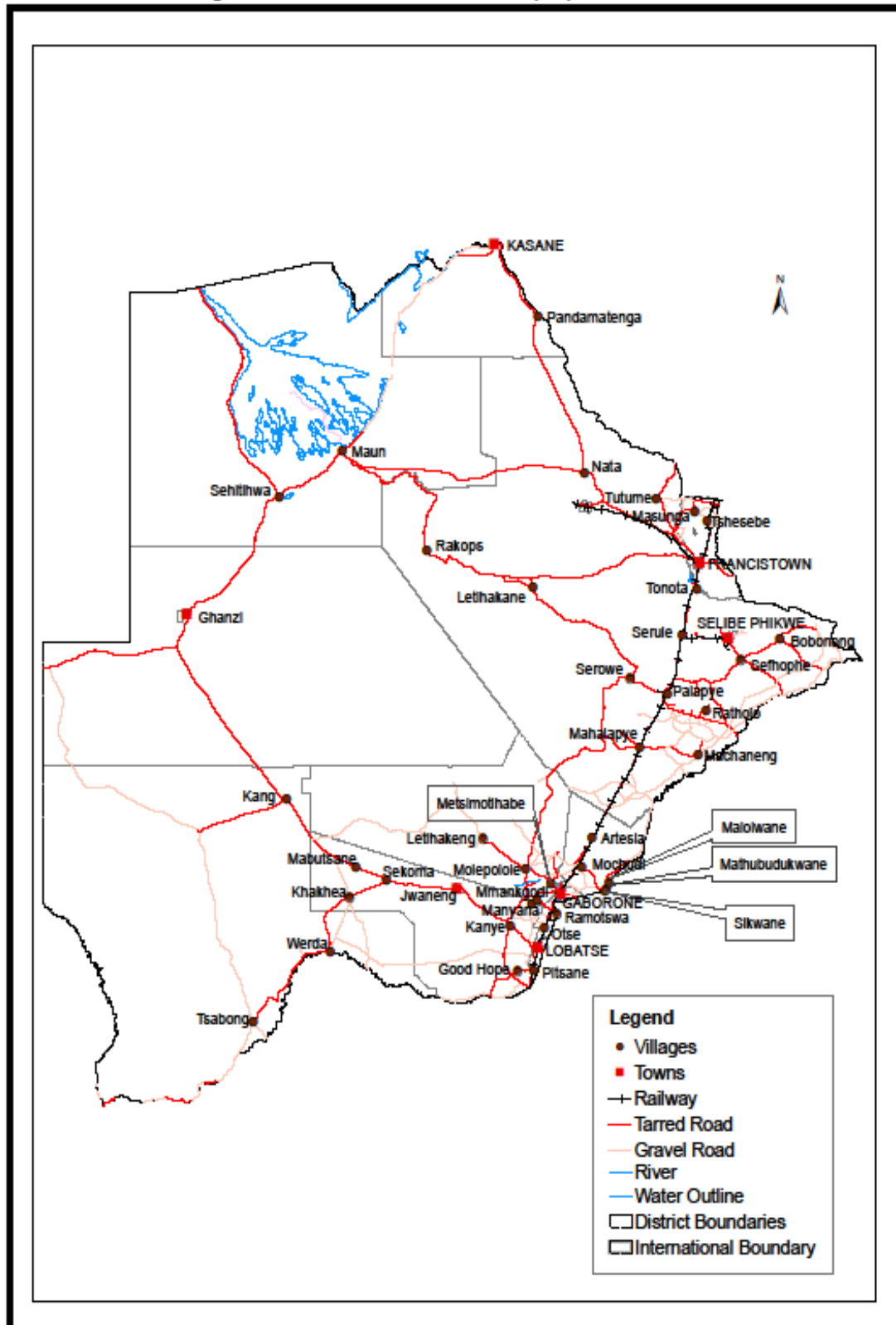
TABLE 4: Core Inflation Rates by Exclusion and Trimmed Mean

Year	Month	Consumer Price Index (Trimmed Mean) (September 2006 = 100)	Core Monthly Inflation Rate (Trimmed Mean) (percentage)	Consumer Price Index (Excluding Administered Prices) (September 2006 = 100)	Core Monthly Inflation (Excluding Administered Prices) (percentage)
2010					
	Jan	129.7	6.7	135.2	5.9
	Feb	129.0	6.7	135.5	5.8
	Mar	130.0	6.5	136.7	5.6
	Apr	133.1	7.7	139.1	6.8
	May	133.2	8.3	140.2	7.2
	Jun	135.0	8.1	141.0	6.9
	July	136.6	7.6	141.5	6.1
	Aug	135.4	7.2	142.0	6.3
	Sept	136.8	7.4	142.7	6.5
	Oct	137.2	7.6	143.1	6.8
	Nov	137.9	7.6	143.6	6.7
	Dec	137.5	7.7	144.2	7.1
2011					
	Jan	139.6	8.0	145.5	7.6
	Feb	142.1	8.6	146.0	7.7
	Mar	142.6	8.4	147.1	7.6
	Apr	143.4	8.0	149.4	7.4
	May	148.7	8.2	150.5	7.3
	Jun	148.8	7.6	151.4	7.4
	July	150.3	7.4	151.9	7.3
	Aug	153.7	8.4	152.5	7.4
	Sept	154.8	8.1	153.2	7.4
	Oct	155.6	8.3	154.0	7.6
	Nov	156.3	8.5	154.4	7.5
	Dec	156.9	8.5	155.1	7.5
2012					
	Jan	157.9	8.1	156.0	7.2
	Feb	158.0	7.8	156.5	7.2
	Mar	159.2	7.6	157.4	7.0
	Apr	158.9	7.3	159.2	6.6
	May	160.7	7.3	160.2	6.5
	Jun	163.9	6.8	161.2	6.4
	Jul	164.5	6.8	161.8	6.5
	Aug	164.0	6.3	162.5	6.6
	Sept	165.6	6.5	163.2	6.5
	Oct	163.7	6.7	164.1	6.6

Table 5: Annual Average Inflation Rates 2008 - 2011 (September 2006=100)

Group		Weights	YEAR			
			2008	2009	2010	2011
1	Food & Non-Alcoholic Beverages	21.84	20.2	14.7	3.6	6.9
2	Alcoholic Beverages, Tobacco & Narcotics	9.29	13.2	35.2	7.1	8.4
3	Clothing and Footwear	7.52	2.0	8.4	8.0	8.9
4	Housing, Water, Electricity, Gas & Other Fuels	11.46	8.1	4.8	6.4	8.4
5	Furnishing, H/H Equipment & Routine Maintenance	6.76	6.0	11.9	9.4	9.0
6	Health	2.71	11.3	5.5	2.7	4.5
7	Transport	18.98	21.2	(8.4)	12.1	13.2
8	Communication	3.01	(0.3)	(0.3)	1.2	(3.0)
9	Recreation & Culture	2.22	2.3	5.0	6.0	8.3
10	Education	3.37	3.9	3.9	5.8	10.6
11	Restaurants & Hotels	3.27	12.7	18.8	9.0	9.3
12	Miscellaneous Goods & Services	9.57	4.9	3.8	7.0	5.3
All-Items Index (National Average Annual Inflation)		100.0	12.6	8.2	6.9	8.5

Prices Collection Coverage for Botswana Consumer Price Index (CPI) - 2012



Glossary

Consumer Price Index (CPI) is an index which measures price changes in goods and services with reference to a base period.

Inflation is a measurement of prices movement of goods and services in a particular country.

Domestic Tradable refers to the goods and services which a country (Botswana) can export to other countries.

Imported Tradable represents the goods and services which a country (Botswana) imports from other countries (trading partners).

Non-Tradable refers to the goods and services which a country cannot either export or import to other countries.

All –Tradable refers to the total of **Domestic** and **Imported tradable**.

Trimmed Mean Core Inflation- attempts to remove 8 percent (by weight) of the commodity sub-groups with the largest price changes at each of the ends of an ordered series of price changes in any given month.

Core inflation by Exclusion is a measure used to remove the volatility inherent in prices that are only adjusted periodically and not always in response to currently prevailing market forces.