

STATISTICS BOTSWANA



Consumer Price Index

OCTOBER 2017

Contact Statistician:
Phaladi Labobedi

Statistics Botswana. Private Bag 0024 Gaborone Botswana
Tel: (+267) 367 1300. **Fax:** (+267) 395 2201. **Email:** info@statsbots.org.bw **Website:** www.statsbots.org.bw

CONTENTS

COMMENTARY

Section 1: Headline Inflation

Section 2: Core Inflation

CHARTS

1. National Rates of Inflation, October 2014 – October 2017
2. Monthly Changes in the Cost-of-Living Index, October 2014 – October 2017
3. Non-Tradable Inflation Rates, October 2014 – October 2017
4. Tradable Inflation Rates, October 2014 – October 2017

TABLES

1. Cost-of-Living Index Series (January 2015 – October 2017)
2. National Cost-of-Living Group and Section Indices
3. Cost-of-Living Index by Tradability (January 2015 – October 2017)
4. Core Inflation Rates
5. Annual Average Inflation Rates 2006-2016

GLOSSARY

COMMENTARY

Section 1: Headline Inflation

The annual inflation rate in October 2017 was 3.0 percent, registering a drop of 0.2 of a percentage point on the September 2017 rate of 3.2 percent. The inflation rates for regions between September and October 2017 indicated that Urban Villages' decreased to 2.7 percent from at 3.0 percent, Cities & Towns went down to 3.0 percent from 3.2 percent and Rural Villages' dropped to 3.3 percent from 3.4 percent between the two months.

The October national Consumer Price Index remained unchanged at 103.2 in October 2017, The Rural Villages index' rose by 0.1 percent, advancing from 103.4 in September 2017 to 103.5 in October 2017. The Urban Villages' index decreased by 0.1 percent, moving from 103.0 in September to 102.9 in October, while the Cities & Towns' index remained at 103.2 between the two months.

Group indices were generally moving at a steady pace between September and October 2017, recording changes of less than 0.5 percent.

The Restaurants & Hotels group index went up from 103.7 to 104.0, recording a rise of 0.2 percent between the two months. This was due to a general increase in the constituent section indices.

The Alcoholic Beverages, Tobacco & Narcotics group index moved from 105.0 to 104.8, registering a decrease of 0.2 percent between September and October 2017. The decline in the section index of Alcoholic Beverages (0.3 percent) contributed to the decrease of the group index.

All-Tradable inflation rate was 2.8 percent in October, a decline of 0.2 of a percentage point on the September rate of 3.0 percent. The Domestic Tradable inflation rate went down from 2.6 percent in September to 2.2 percent in October. The Non-Tradable inflation rate decreased from 3.5 percent in September to 3.4 percent in October. The Imported Tradable inflation rate dropped from 3.1 percent to 3.0 percent between the two periods.

The *All-Tradable* index remained unchanged at 103.0 between September and October. The Domestic Tradable index moved from 102.6 in September to 102.5 in October, recording a decrease of 0.1 percent. The Imported Tradable index moved from 103.1 in September to 103.2 in October, while the Non-Tradable index remained unchanged at 103.5 between the two periods.

Section 2: Core Inflation

The Trimmed Mean Core Inflation rate was 2.6 percent in October 2017, a decrease of 0.1 of a percentage point on the September 2017 rate of 2.7 percent. The Core Inflation rate by exclusion also dropped by 0.2 of a percentage point moving from 3.0 percent to 2.8 percent during the period under review.

CHARTS

Chart 1: National Inflation Rate 2014 - 2017

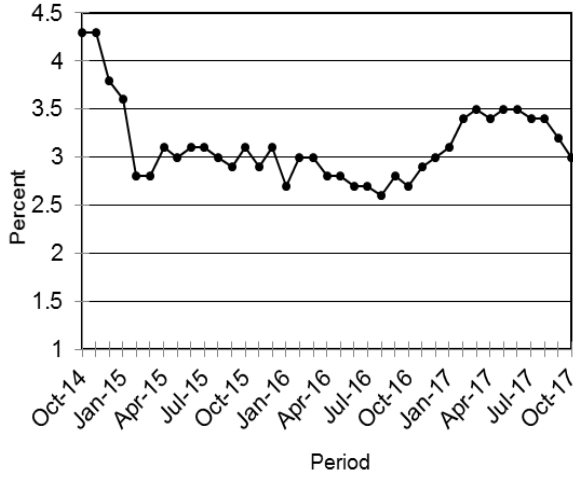


Chart 2: Monthly Changes in Cost-of-Living Index 2014 - 2017

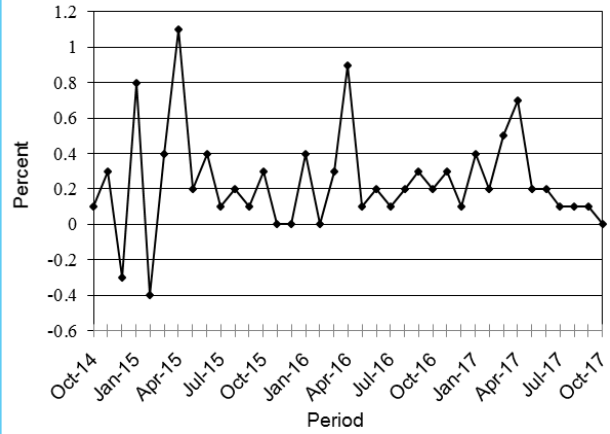


Chart 3: Non-Tradable Inflation 2014 - 2017

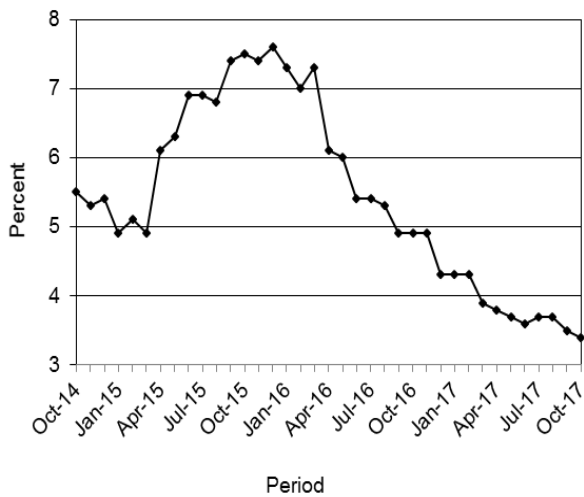
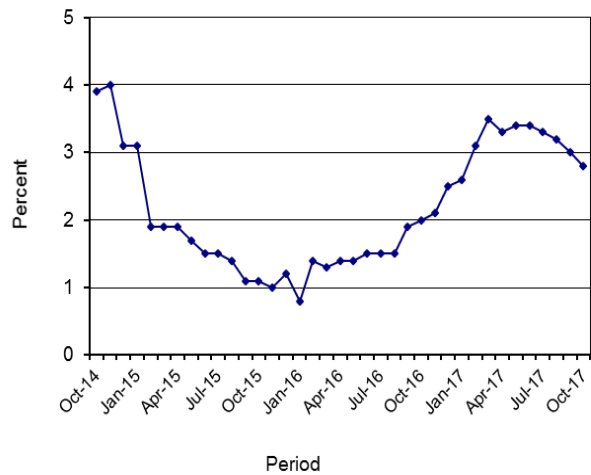


Chart 4: Tradable Inflation 2014 - 2017



A.N. Majelantle
Statistician General
 15th November 2017

TABLES

TABLE 1: COST OF LIVING INDEX (September 2016 =100.0)

		Food	Alcohol and Tobacco	Clothing and Footwear	Housing	Furniture etc	Health	Transport	Communication	Rec. & Culture	Education	Rest. & Hotels	Miscellaneous
	Weights	16.51	7.83	6.27	14.90	6.39	3.62	20.65	4.27	2.92	3.34	2.76	10.55
2015	Jan	96.5	94.9	89.7	88.4	94.1	94.4	107.0	99.5	92.9	96.4	92.6	87.0
	Feb	96.7	95.8	90.7	88.3	94.9	94.5	102.4	99.5	93.2	96.4	94.0	87.2
	Mar	96.7	96.8	91.4	88.9	95.5	94.6	102.5	99.5	93.3	96.4	94.5	87.2
	Apr	96.7	97.2	91.8	92.2	95.7	94.6	102.7	99.5	97.7	96.4	94.6	92.5
	May	96.7	97.5	92.3	92.1	95.9	96.9	102.7	100.0	97.9	96.4	94.8	92.5
	Jun	96.6	97.6	92.9	93.7	96.6	97.0	102.8	100.0	97.9	96.4	95.4	92.9
	Jul	96.7	97.8	93.3	93.7	96.7	97.3	102.9	100.0	98.1	96.4	95.6	93.0
	Aug	96.9	98.0	94.1	93.8	97.0	97.3	102.9	100.0	98.1	96.5	95.9	93.1
	Sept	97.0	97.3	94.6	96.0	97.6	97.5	101.8	100.0	98.2	96.5	96.2	93.1
	Oct	97.2	98.2	95.2	96.0	97.9	97.5	101.8	100.0	98.4	96.5	97.1	93.2
	Nov	97.2	98.4	95.6	95.9	97.8	97.6	101.8	100.0	98.5	96.5	97.3	93.2
	Dec	97.2	98.5	96.0	97.0	98.1	97.6	100.5	100.0	98.6	96.5	97.6	93.1
2016	Jan	97.6	98.6	96.8	97.1	98.2	97.6	100.5	100.0	98.9	99.9	97.9	93.6
	Feb	98.2	98.7	97.4	96.9	98.3	97.7	99.1	100.0	99.5	99.9	98.2	93.3
	Mar	98.5	98.8	98.0	98.2	98.5	97.8	99.2	100.0	99.6	99.9	98.4	93.5
	Apr	99.3	99.3	98.5	98.2	98.7	98.0	99.5	100.0	99.6	100.0	98.7	99.6
	May	99.4	99.4	98.9	98.2	98.8	99.9	99.5	100.0	99.7	100.0	98.9	99.6
	Jun	99.1	99.6	99.4	99.0	99.3	100.0	99.8	100.0	99.6	100.0	99.2	99.9
	Jul	99.3	99.9	99.6	99.0	99.4	100.0	99.9	100.0	99.7	100.0	99.3	100.0
	Aug	99.7	100.0	99.9	99.0	99.5	100.0	100.0	100.0	99.8	100.0	99.6	100.0
	Sept	100.0	100.0	100.0	100.0	100.0	100.0	100.0	100.0	100.0	100.0	100.0	100.0
	Oct	100.4	100.7	100.2	100.0	100.2	100.0	100.0	100.0	100.2	100.0	100.2	100.4
	Nov	100.9	101.2	100.6	100.1	100.6	100.2	100.1	100.0	100.2	100.0	100.5	100.5
	Dec	101.0	101.3	100.7	100.2	100.8	100.3	100.2	100.0	100.3	100.0	100.6	100.5
2017	Jan	101.9	102.3	101.2	100.4	101.2	100.8	99.7	100.1	100.7	104.0	101.4	100.7
	Feb	102.3	103.0	101.4	100.6	101.7	100.9	99.8	100.1	101.1	104.1	101.7	101.0
	Mar	102.8	103.6	101.7	101.0	102.1	101.1	100.9	100.1	101.3	104.1	102.0	101.4
	Apr	103.1	104.1	101.9	104.8	102.3	101.2	101.0	100.1	102.0	104.1	102.2	101.5
	May	103.4	104.7	102.1	104.9	102.4	101.2	101.1	100.2	102.0	104.1	102.5	101.6
	Jun	103.3	104.7	102.2	105.0	102.7	101.8	101.4	100.3	102.1	104.1	102.8	102.6
	Jul	103.6	104.8	102.6	105.1	102.8	102.0	101.4	100.3	102.2	104.2	103.3	102.6
	Aug	103.5	104.9	102.8	105.2	102.9	102.0	101.6	100.3	102.3	104.2	103.5	102.7
	Sept	102.8	105.0	103.0	105.8	103.1	102.0	101.7	101.3	102.2	104.2	103.7	102.8
	Oct	102.8	104.8	103.1	105.7	103.3	102.1	101.7	101.3	102.3	104.2	104.0	102.8
	% Change on												
	Last month	(0.0)	(0.2)	0.1	(0.1)	0.1	0.1	0.0	0.0	0.0	0.0	0.2	0.1

Consumer Price Index- October 2017

TABLE 1: COST OF LIVING INDEX (Cont.)

		All Items Index	National Inflation Rate	Monthly Change	Towns & Cities Index	Urban Village Index	Rural Villages Index	Annual Inflation		
								Towns & Cities	Urban Villages	Rural Villages
		100.0	%	%	41.8	34.5	23.7	%	%	%
2015	Jan	95.4	3.6	0.8	95.3	95.7	95.0	3.6	3.7	3.7
	Feb	95.0	2.8	(0.4)	94.9	95.2	95.0	2.6	2.9	3.2
	Mar	95.3	2.8	0.4	95.1	95.6	95.4	2.5	2.8	3.6
	Apr	96.4	3.1	1.1	96.5	96.3	96.1	3.1	3.0	3.4
	May	96.5	3.0	0.2	96.5	96.5	96.5	3.0	2.8	3.6
	Jun	96.9	3.1	0.4	96.9	96.9	96.6	3.1	3.0	3.4
	Jul	97.0	3.1	0.1	97.1	97.1	96.7	3.1	3.0	3.5
	Aug	97.2	3.0	0.2	97.2	97.3	96.9	2.8	3.0	3.4
	Sept	97.3	2.9	0.1	97.3	97.4	97.2	2.9	2.8	3.3
	Oct	97.6	3.1	0.3	97.7	97.6	97.2	3.2	3.0	3.1
	Nov	97.6	2.9	0.0	97.7	97.6	97.3	2.9	2.7	3.0
	Dec	97.6	3.1	(0.0)	97.7	97.5	97.4	3.2	2.8	3.4
2016	Jan	97.9	2.7	0.4	97.9	98.1	97.7	2.7	2.6	2.8
	Feb	97.9	3.0	(0.0)	97.7	98.2	97.9	2.9	3.2	3.1
	Mar	98.2	3.0	0.3	98.1	98.6	98.0	3.1	3.2	2.7
	Apr	99.1	2.8	0.9	99.0	99.4	98.7	2.6	3.2	2.7
	May	99.2	2.8	0.1	99.1	99.5	98.9	2.7	3.1	2.5
	Jun	99.4	2.7	0.2	99.4	99.7	99.1	2.5	2.8	2.6
	Jul	99.6	2.7	0.1	99.5	99.7	99.6	2.5	2.7	3.0
	Aug	99.7	2.6	0.2	99.6	99.9	99.8	2.6	2.6	2.9
	Sept	100.0	2.8	0.3	100.0	100.0	100.0	2.8	2.7	2.9
	Oct	100.2	2.7	0.2	100.2	100.2	100.2	2.5	2.7	3.1
	Nov	100.4	2.9	0.3	100.3	100.4	100.7	2.7	2.9	3.5
	Dec	100.5	3.0	0.1	100.5	100.4	100.8	2.8	3.0	3.5
2017	Jan	101.0	3.1	0.4	100.9	100.8	101.3	3.1	2.8	3.6
	Feb	101.2	3.4	0.2	101.1	101.1	101.6	3.5	2.9	3.8
	Mar	101.7	3.5	0.5	101.6	101.6	102.1	3.6	3.0	4.2
	Apr	102.5	3.4	0.7	102.3	102.4	102.8	3.3	3.0	4.2
	May	102.7	3.5	0.2	102.5	102.6	103.0	3.4	3.1	4.1
	Jun	102.9	3.5	0.2	102.8	102.9	103.0	3.4	3.3	3.9
	Jul	103.0	3.4	0.1	102.9	102.9	103.3	3.5	3.2	3.7
	Aug	103.1	3.4	0.1	103.0	103.0	103.4	3.4	3.2	3.6
	Sept	103.2	3.2	0.1	103.2	103.0	103.4	3.2	3.0	3.4
	Oct	103.2	3.0	0.0	103.2	102.9	103.5	3.0	2.7	3.3
% Change on last month		0.0			0.0	(0.1)	0.1			

TABLE 2 : NATIONAL COST-OF-LIVING GROUP AND SECTION INDICES (SEPTEMBER 2016=100.0)

	Group Section	Weights	This month Oct 2017	Last month Sep 2017	3 months ago Jul 2017	6 months ago Apr 2017	12 months ago Oct 2016	Percentage Change on:			
								Last month	3 months ago	6 months ago	12 months ago
1	Food & Non-Alcoholic Beverages	16.51	102.8	102.8	103.6	103.1	100.4	(0.0)	(0.8)	(0.3)	2.4
1.1	Bread & Cereals	5.27	99.1	99.9	102.1	102.1	100.2	(0.8)	(2.9)	(2.9)	(1.0)
1.2	Meat (Fresh, Chilled & Frozen)	2.66	103.7	103.6	104.8	104.9	100.0	0.1	(1.1)	(1.1)	3.6
1.3	Fish (Fresh, Chilled & Frozen)	0.17	104.9	104.6	104.4	102.1	100.2	0.2	0.4	2.7	4.6
1.4	Milk, Cheese & Milk Products	1.49	101.0	101.0	99.8	99.9	100.3	0.0	1.2	1.1	0.7
1.5	Oils & Fats	0.70	100.5	100.4	102.5	102.2	100.9	0.1	(1.9)	(1.7)	(0.4)
1.6	Fruit	0.86	106.6	104.9	106.1	107.3	101.0	1.6	0.5	(0.6)	5.5
1.7	Vegetables	1.80	105.1	103.8	103.8	103.6	100.9	1.3	1.3	1.5	4.2
1.8	Sugar, Jam, Honey, Chocolate & Confectionery	1.29	110.7	110.8	110.3	106.0	100.7	(0.1)	0.3	4.4	9.9
1.9	Food not else where Classified	0.99	102.3	102.5	101.8	101.3	99.9	(0.2)	0.5	1.0	2.5
1.10	Coffee, Tea & Cocoa	0.36	112.2	111.7	110.3	105.5	100.4	0.4	1.7	6.3	11.8
1.11	Mineral Waters, Soft Drinks, Fruits & Veg. Juices	0.92	102.6	102.8	101.9	101.0	100.6	(0.2)	0.7	1.5	2.0
2	Alcoholic Beverages, Tobacco & Narcotics	7.83	104.8	105.0	104.8	104.1	100.7	(0.2)	0.0	0.7	4.1
2.1	Alcoholic Beverages	6.19	104.7	105.0	104.9	104.4	100.8	(0.3)	(0.2)	0.3	3.9
2.2	Tobacco	1.65	105.1	104.9	104.2	103.1	100.3	0.2	0.9	2.0	4.9
3	Clothing and Footwear	6.27	103.1	103.0	102.6	101.9	100.2	0.1	0.5	1.2	2.9
3.1	Clothing	2.42	102.5	102.5	102.0	101.6	100.3	0.1	0.6	0.9	2.2
3.2	Other articles of Clothing	1.01	102.5	102.1	102.0	101.4	100.0	0.4	0.4	1.1	2.5
3.3	Cleaning, Repair & Hire	0.99	104.9	104.9	104.5	102.5	100.0	0.0	0.3	2.3	4.8
3.4	Footwear	1.85	103.1	103.0	102.8	102.2	100.2	0.1	0.4	1.0	3.0
4	Housing, Water, Electr. Gas & Other Fuels	14.90	105.7	105.8	105.1	104.8	100.0	(0.1)	0.5	0.9	5.7
4.1	Rent paid by Tenants	6.25	102.2	102.2	101.0	100.6	100.0	0.0	1.2	1.5	2.2
4.2	Materials for Maintenance & Repair of dwellings	4.29	103.1	103.5	103.0	102.3	100.0	(0.5)	0.1	0.7	3.1
4.3	Water Supply & Misc. Services	1.50	125.4	125.4	125.4	125.4	100.0	0.0	0.0	0.0	25.4
4.4	Electricity Gas and other Fuels	2.86	107.1	107.0	106.9	106.8	100.2	0.0	0.2	0.2	6.8
5	Furnishing, H/H Equipment & Routine Maintenance	6.39	103.3	103.1	102.8	102.3	100.2	0.1	0.5	1.0	3.1
5.1	Furniture & Furnishing	1.65	102.8	102.7	102.3	102.2	99.9	0.2	0.6	0.7	2.9
5.2	Carpets & Other Floor Coverings	0.24	103.8	103.8	103.2	102.2	100.7	0.1	0.6	1.6	3.2
5.3	Household Textiles	0.41	102.6	102.6	102.1	101.8	100.5	(0.1)	0.4	0.8	2.0
5.4	Household Appliances	0.85	103.1	102.5	102.5	102.2	100.6	0.5	0.5	0.9	2.5
5.5	Glassware, Tableware & Household Utensils	0.40	101.4	101.2	101.1	101.0	100.1	0.2	0.3	0.4	1.3
5.6	Small Tools, Miscellaneous Accessories	0.06	102.2	102.1	101.7	101.3	99.9	0.1	0.5	0.9	2.3
5.7	Goods & Services for H/hold Maintenance	2.78	104.0	103.9	103.6	102.6	100.1	0.0	0.4	1.4	3.9

TABLE 2 : NATIONAL COST-OF-LIVING GROUP AND SECTION INDICES (SEPTEMBER 2016=100.0) Cont'd

	Group Section	Weights	This month Oct 2017	Last month Sep 2017	3 months ago Jul 2017	6 months ago Apr 2017	12 months ago Oct 2016	Percentage Change on:			
								on: Last month	3 months ago	6 months ago	12 months ago
6	Health	3.62	102.1	102.0	102.0	101.2	100.0	0.1	0.1	0.9	2.1
6.1	Medical Products, App. & Equip.	0.81	105.3	105.2	105.0	104.4	100.2	0.1	0.3	0.9	5.1
6.2	Out-patient Services	0.70	101.9	101.7	101.5	101.1	100.0	0.2	0.4	0.8	1.9
6.3	Hospital Services	2.10	101.0	101.0	101.0	100.0	100.0	0.0	0.0	1.0	1.0
7	Transport	20.65	101.7	101.7	101.4	101.0	100.0	0.0	0.3	0.7	1.7
7.1	Purchase of Vehicles	5.29	100.4	100.3	99.4	98.4	100.1	0.1	1.0	2.1	0.3
7.2	Operation of Personal Transport	11.13	102.8	102.7	102.6	102.6	100.0	0.0	0.1	0.2	2.7
7.3	Transport Services	4.22	100.5	100.5	100.5	100.0	100.0	0.0	0.0	0.5	0.5
8	Communication	4.27	101.3	101.3	100.3	100.1	100.0	0.0	1.0	1.2	1.3
8.1	Postal Services	0.15	126.5	126.5	100.0	100.0	100.0	0.0	26.5	26.5	26.5
8.2	Telephone & Telefax Equipment	0.71	102.4	102.4	101.6	100.5	100.0	0.0	0.8	2.0	2.4
8.3	Telephone & Telefax Services	3.41	100.0	100.0	100.0	100.0	100.0	0.0	0.0	(0.0)	0.0
9	Recreation & Culture	2.92	102.3	102.2	102.2	102.0	100.2	0.0	0.0	0.3	2.1
9.1	Audio Visual, Photographic & Info. Proce. Equip.	1.96	101.9	101.9	102.0	101.8	100.2	0.0	(0.1)	0.2	1.7
9.2	Other Recreational Items & Equip.	0.46	101.3	101.3	100.8	100.6	100.0	0.1	0.5	0.7	1.3
9.3	Recreational & Cultural Services	0.37	104.9	104.8	104.8	104.8	100.0	0.0	0.1	0.1	4.9
9.4	Newspapers, Books & Stationary	0.13	103.6	103.2	102.7	102.1	100.1	0.3	0.8	1.5	3.5
10	Education	3.34	104.2	104.2	104.2	104.1	100.0	0.0	0.0	0.1	4.2
10.1	Pre-Primary & Primary Education	0.80	105.4	105.4	105.3	105.1	100.0	0.0	0.1	0.3	5.4
10.2	Secondary & Tertiary Education	2.54	103.8	103.8	103.8	103.8	100.0	0.0	0.0	0.1	3.8
11	Restaurants & Hotels	2.76	104.0	103.7	103.3	102.2	100.2	0.2	0.6	1.7	3.8
11.1	Restaurants, Cafes and the Like	2.31	104.3	104.0	103.5	102.5	100.2	0.2	0.8	1.7	4.0
11.2	Accommodation Services	0.45	102.4	102.3	102.3	100.9	100.0	0.1	0.1	1.5	2.4
12	Miscellaneous Goods & Services	10.55	102.8	102.8	102.6	101.5	100.4	0.1	0.2	1.3	2.4
12.1	Personal Care	1.71	104.2	104.2	103.8	103.1	100.3	0.0	0.4	1.1	3.9
12.2	Personal Effects N.E.C.	1.24	103.8	103.5	103.1	102.2	100.0	0.3	0.7	1.6	3.8
12.3	Social Protection	0.07	102.1	102.1	102.0	102.0	100.0	0.0	0.0	0.1	2.1
12.4	Insurance	4.73	101.0	101.0	101.0	101.0	100.7	0.0	0.0	0.0	0.3
12.5	Financial Services	0.79	103.2	103.1	103.0	101.8	100.2	0.0	0.2	1.4	2.9
12.6	Taxes Licences, Fees	2.01	105.2	105.1	105.1	100.7	100.0	0.1	0.1	4.4	5.2
	All-Items Index	100.0	103.2	103.2	103.0	102.5	100.2	0.0	0.2	0.7	3.0

Consumer Price Index- October 2017

TABLE 3: COST-OF-LIVING INDEX BY TRADABILITY (September 2016 = 100.0)

	All Items		Non-Tradable		Domestic Tradable		Imported Tradable		All Tradable		
	Index	Inflation	Index	Inflation	Index	Inflation	Index	Inflation	Index	Inflation	
Weights	100.00		35.83		20.39		43.77		64.17		
2015	Jan	95.4	3.6	89.8	4.9	95.5	4.2	99.4	2.5	97.9	3.1
	Feb	95.0	2.8	90.0	5.1	96.0	3.4	98.0	0.9	97.2	1.9
	Mar	95.3	2.8	90.4	4.9	96.6	3.6	98.2	1.0	97.6	1.9
	Apr	96.4	3.1	93.0	6.1	96.9	3.5	98.5	0.9	97.9	1.9
	May	96.5	3.0	93.3	6.3	96.9	3.2	98.6	0.8	98.0	1.7
	Jun	96.9	3.1	94.3	6.9	96.9	3.0	98.7	0.6	98.0	1.5
	Jul	97.0	3.1	94.4	6.9	96.9	2.9	99.0	0.7	98.2	1.5
	Aug	97.2	3.0	94.5	6.8	97.0	2.9	99.3	0.6	98.4	1.4
	Sept	97.3	2.9	95.3	7.4	96.6	2.7	99.2	0.2	98.2	1.1
	Oct	97.6	3.1	95.4	7.5	97.3	3.3	99.3	0.2	98.3	1.1
	Nov	97.6	2.9	95.4	7.4	97.4	3.4	99.3	-0.4	98.6	1.0
	Dec	97.6	3.1	96.0	7.6	97.4	3.5	98.9	0.0	98.3	1.2
2016	Jan	97.9	2.7	96.3	7.3	98.0	2.6	99.1	-0.3	98.6	0.8
	Feb	97.9	3.0	96.4	7.0	98.4	2.5	98.8	0.7	98.6	1.4
	Mar	98.2	3.0	96.9	7.3	98.6	2.1	99.0	0.8	98.8	1.3
	Apr	99.1	2.8	98.7	6.1	99.1	2.3	99.4	0.9	99.3	1.4
	May	99.2	2.8	98.9	6.0	99.4	2.5	99.4	0.8	99.4	1.4
	Jun	99.4	2.7	99.4	5.4	99.3	2.5	99.6	0.9	99.5	1.5
	Jul	99.6	2.7	99.4	5.4	99.5	2.8	99.7	0.7	99.6	1.5
	Aug	99.7	2.6	99.5	5.3	99.9	3.0	99.9	0.6	99.9	1.5
	Sept	100.0	2.8	100.0	4.9	100.0	3.5	100.0	0.9	100.0	1.9
	Oct	100.2	2.7	100.1	4.9	100.3	3.1	100.2	0.9	100.2	1.9
	Nov	100.4	2.9	100.1	4.9	100.7	3.4	100.5	1.2	100.6	2.1
	Dec	100.5	3.0	100.1	4.3	100.9	3.6	100.6	1.8	100.7	2.5
2017	Jan	101.0	3.1	100.4	4.3	102.2	4.3	100.8	1.7	101.2	2.6
	Feb	101.2	3.4	100.5	4.3	102.7	4.3	101.1	2.4	101.6	3.1
	Mar	101.7	3.5	100.8	3.9	103.1	4.6	101.8	2.9	102.2	3.5
	Apr	102.5	3.4	102.4	3.8	103.4	4.3	102.1	2.7	102.5	3.3
	May	102.7	3.5	102.6	3.7	103.7	4.3	102.3	2.9	102.7	3.4
	Jun	102.9	3.5	103.0	3.6	103.5	4.2	102.5	2.9	102.8	3.4
	Jul	103.0	3.4	103.1	3.7	103.4	3.8	102.7	3.0	103.0	3.3
	Aug	103.1	3.4	103.1	3.7	103.2	3.4	103.0	3.1	103.1	3.2
	Sept	103.2	3.2	103.5	3.5	102.6	2.6	103.1	3.1	103.0	3.0
	Oct	103.2	3.0	103.5	3.4	102.5	2.2	103.2	3.0	103.0	2.8
% Change on last month		0.0		0.0		(0.1)		0.0		(0.0)	

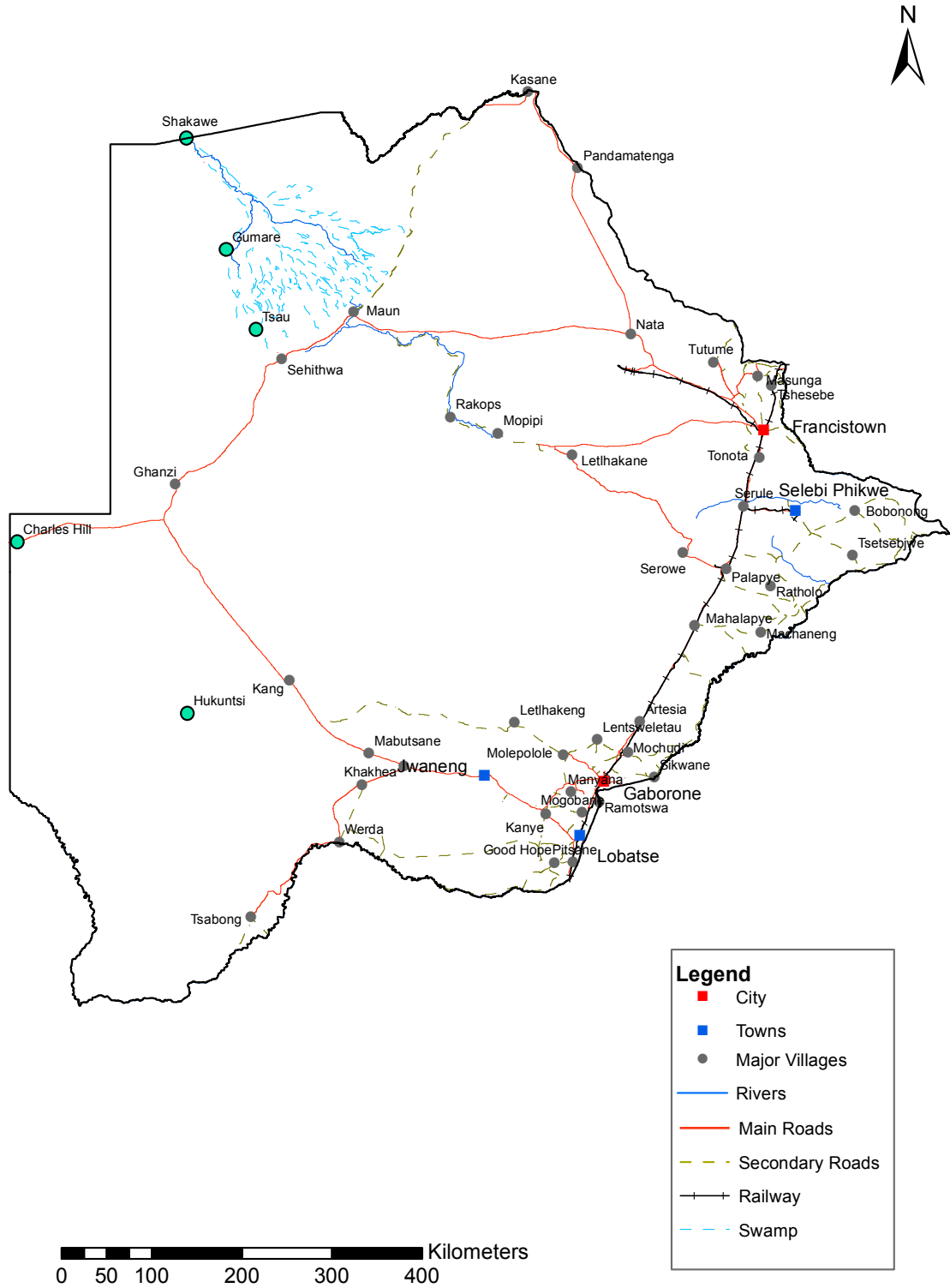
TABLE 4: Core Inflation Rates by Exclusion and Trimmed Mean

Year	Month	Consumer Price Index (Trimmed Mean) (September 2016 = 100)	Core Monthly Inflation Rate (Trimmed Mean) (percentage)	Consumer Price Index (Excluding Administered Prices) (September 2016 = 100)	Core Monthly Inflation (Excluding Administered Prices) (percentage)
2015					
	Jan	92.6	3.6	93.7	4.8
	Feb	92.7	3.2	94.3	4.8
	Mar	93.0	3.3	94.7	4.8
	Apr	95.5	3.6	95.3	4.8
	May	95.7	3.5	95.4	4.7
	Jun	96.1	3.6	95.8	4.7
	Jul	96.1	3.6	96.0	4.7
	Aug	96.4	3.5	96.2	4.6
	Sept	96.8	3.4	96.6	4.8
	Oct	97.1	3.6	96.9	5.0
	Nov	97.1	3.3	97.0	4.7
	Dec	97.0	3.2	97.1	4.5
2016					
	Jan	97.5	2.8	97.5	4.0
	Feb	97.7	2.6	97.8	3.7
	Mar	97.9	2.5	98.1	3.7
	Apr	98.5	2.4	98.9	3.9
	May	98.7	2.3	99.1	3.8
	Jun	98.7	2.4	99.3	3.6
	Jul	99.5	2.5	99.5	3.6
	Aug	99.7	2.4	99.7	3.6
	Sept	100.0	2.6	100.0	3.6
	Oct	100.2	2.2	100.2	3.4
	Nov	100.4	2.5	100.6	3.7
	Dec	100.5	2.5	100.7	3.7
2017					
	Jan	101.0	2.7	101.3	3.9
	Feb	101.1	2.9	101.6	3.9
	Mar	101.7	3.1	102.0	3.9
	Apr	102.0	3.1	102.2	3.3
	May	102.1	3.1	102.5	3.4
	Jun	102.4	2.9	102.6	3.3
	Jul	102.5	2.9	102.8	3.3
	Aug	102.6	2.9	102.9	3.3
	Sept	102.7	2.7	103.0	3.0
	Oct	102.7	2.6	103.0	2.8

Table 5: Average Annual Inflation (September 2016=100)

	Group	Weights	2007	2008	2009	2010	2011	2012	2013	2014	2015	2016
1	Food & Non-Alcoholic Beverages	16.51	11.2	20.2	14.7	3.6	6.9	8.0	5.4	3.0	1.3	2.7
2	Alcoholic Beverages,Tobacco & Narcotics	7.83	10.1	13.2	35.2	7.1	8.4	7.6	10.3	9.0	6.1	2.5
3	Clothing and Footwear	6.27	1.6	2.0	8.4	8.0	8.9	7.5	6.3	6.0	7.6	6.5
4	Housing, Water, Electr. Gas & Other Fuels	14.90	4.7	8.1	4.8	6.4	8.4	7.7	4.3	3.9	7.1	6.3
5	Furnishing, H/H Equipment& Routine Maintenance	6.39	4.9	6.0	11.9	9.4	9.0	7.3	4.9	5.0	6.1	3.0
6	Health	3.62	12.5	11.3	5.5	2.7	4.5	5.9	5.5	8.3	6.3	3.0
7	Transport	20.65	7.9	21.2	(8.4)	12.1	13.2	10.8	7.3	1.2	(5.1)	(2.7)
8	Communication	4.27	(5.1)	(0.3)	(0.3)	1.2	(3.0)	(1.4)	0.3	0.3	0.3	0.2
9	Recreation & Culture	2.92	(1.8)	2.3	5.0	6.0	8.3	5.8	4.5	4.2	5.7	3.0
10	Education	3.34	6.0	3.9	3.9	5.8	10.6	6.4	4.7	7.4	6.4	3.7
11	Restaurants & Hotels	2.76	15.1	12.7	18.8	9.0	9.3	8.4	7.9	7.6	5.5	4.0
12	Miscellaneous Goods & Services	10.55	4.3	4.9	3.8	7.0	5.3	2.0	1.2	5.2	7.2	7.5
All-Items Index		100.0	7.1	12.6	8.2	6.9	8.5	7.5	5.9	4.4	3.1	2.8

CPI AREA COVERAGE



Compiled and Prepared by Statistics Botswana, 2016

GLOSSARY

Consumer Price Index (CPI) is an index which measures price changes in goods and services with reference to a base period.

Inflation is a measurement of prices movement of goods and services in a particular country.

Domestic Tradable refers to the goods and services which a country (Botswana) can export to other countries.

Imported Tradable represents the goods and services which a country (Botswana) imports from other countries (trading partners).

Non-Tradable refers to the goods and services which a country cannot either export or import to other countries.

All –Tradable refers to the total of **Domestic** and **Imported tradable**.

Trimmed Mean Core Inflation- attempts to remove 8 percent (by weight) of the commodity sub-groups with the largest price changes at each of the ends of an ordered series of price changes in any given month.

Core inflation by Exclusion is a measure used to remove the volatility inherent in prices that are only adjusted periodically and not always in response to currently prevailing market forces.