

Statistics Botswana
Private Bag 0024, Gaborone, Botswana
Tel: (267) 3671300, Fax (267) 3952201,
Email: csobots@gov.bw, Website: www.cso.gov.bw

All correspondence should be addressed to Statistician General

CONSUMER PRICE STATISTICS – MARCH 2012

CONTENTS

COMMENTARY

- 1. Section 1: Headline Inflation**
- 2. Section 2: Core Inflation**

CHARTS

- 1. National Rates of Inflation, January 2009 – March 2012**
- 2. Monthly Changes in the Cost-of-Living Index, January 2009 – March 2012**
- 3. Non-Tradeables Inflation Rates, January 2009 – March 2012**
- 4. Tradeables Inflation Rates, January 2009 - March 2012**

TABLES

- 1. Cost-of-Living Index Series (January 2009 – March 2012)**
- 2. National Cost-of-Living Group and Section Indices**
- 3. Cost-of-Living Index by Tradeability (January 2009 – March 2012)**
- 4. Core Inflation Rates**

CONTACT STATISTICIAN: *PHALADI LABOBEDI*

PRICE STATISTICS UNIT, TEL: *3671300*, EXT: *1360/61/77/97*

EMAIL: plabobedi@gov.bw

“Figures that inform and help you make decisions”

COMMENTARY-MARCH 2012 CONSUMER PRICE INDEX (CPI)

Section 1: Headline Inflation

In March 2012, national year-on-year inflation rate stood at 8.0 percent, down by 0.2 of a percentage point from 8.2 percent in February 2012. The urban villages' inflation rate went down from 8.6 percent in February to 8.3 percent in March, a decrease of 0.3 of a percentage point. The towns and cities' inflation rate registered a drop of 0.2 of a percentage point, from 8.0 percent in February to 7.8 percent in March. The rural villages' inflation rate stood at 8.2 percent in March, down by 0.1 of a percentage point on the February rate of 8.3 percent.

The March national Consumer Price Index was 155.4, registering an increase of 0.5 percent on the February index of 154.7. The Rural Villages' index recorded an increase of 0.7 percent from 157.6 to 158.6 between the two months. The Urban Villages' index moved from 154.4 to 155.1, recording an increase of 0.5 percent, while the Cities and Towns' index went up from 153.7 to 154.3, registering an increase of 0.4 percent.

Two group indices recorded changes of at least 1.0 percent between February and March –*Alcoholic Beverages, Tobacco & Narcotics (1.2 percent) and Restaurants & Hotels (1.1 percent)*.

Alcoholic Beverages, Tobacco & Narcotics group index rose by 1.2 percent from 193.6 to 196.0 between February and March. This was attributed to a rise in the constituent section indices of *Alcoholic Beverages (1.3 percent)* and *Tobacco (1.0 percent)*.

The *Restaurants & Hotels* group index recorded an increase of 1.1 percent from 187.5 in February to 189.5 in March. This was largely due to a rise in the constituent section index of *Restaurants, Cafes and the Like (1.1 percent)*.

Food & Non Alcoholic Beverages group index went up by 0.7 percent, from 173.3 in February to 174.6 in March. The rise was due to a general increase in the food prices. All section index recorded increases, notably; *Mineral Waters, Soft Drinks, Fruits & Veg. Juices (1.6 percent), Bread & Cereals (1.3 percent)* and *Fruits (0.9 percent)*.

The *All-Tradeables* inflation rate registered a drop of 0.2 of a percentage point from 9.1 to 8.9 percent between February and March. The *Imported Tradeables* inflation rate recorded a decrease of 0.4 of a percentage point over the period, from 10.2 to 9.8 percent. The *Non-Tradeables* inflation rate went down by 0.3 of a percentage point, from 6.1 percent in February to 5.8 percent in March, while the *Domestic Tradeables* inflation rate increased by 0.3 of a percentage point, from 7.3 percent in February to 7.6 percent in March.

All-Tradeables index recorded an increase of 0.5 percent moved from 160.6 in February to 161.4 in March. The *Domestic Tradeables* index rose by 1.1 percent, from 170.4 in February to 172.2 in March. The *Non-Tradeables* index went up by 0.3 percent, from 141.0 to 141.4 between the two months, while the *Imported Tradeables* index recorded an increase of 0.2 percent, from 155.7 in February to 156.1 in March.

Section 2: Core Inflation

The March 2012 Trimmed Mean Core Inflation rate registered a decrease of 0.2 of a percentage point, from 7.8 percent in February to 7.6 percent in March. The Core Inflation rate by Exclusion went down by 0.2 of a percentage point, from 7.2 percent in February to 7.0 percent in March.

Chart 1: National Inflation Rate 2009 - 2012

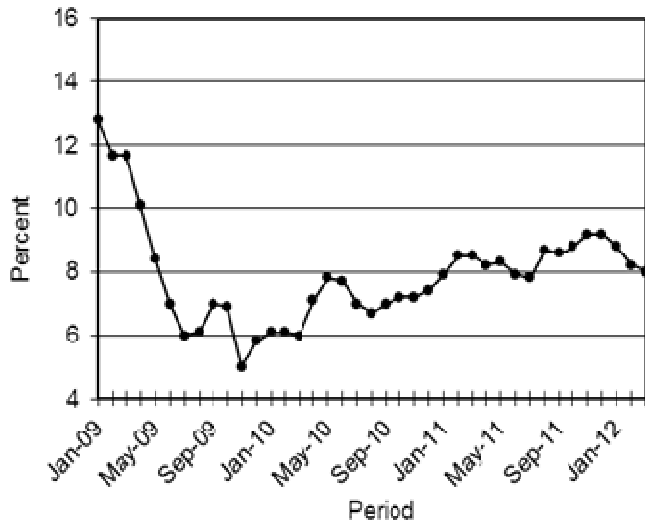


Chart 2: Monthly Changes in Cost-of-Living Index 2009 - 2012

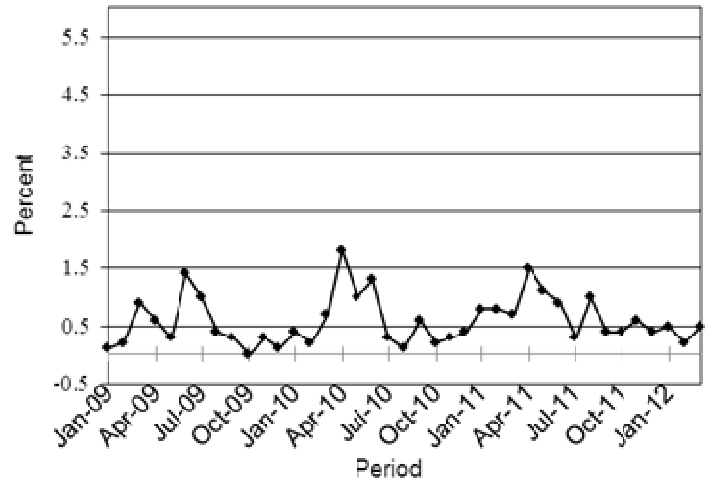


Chart 3: Non-Tradeable Inflation 2009 - 2012

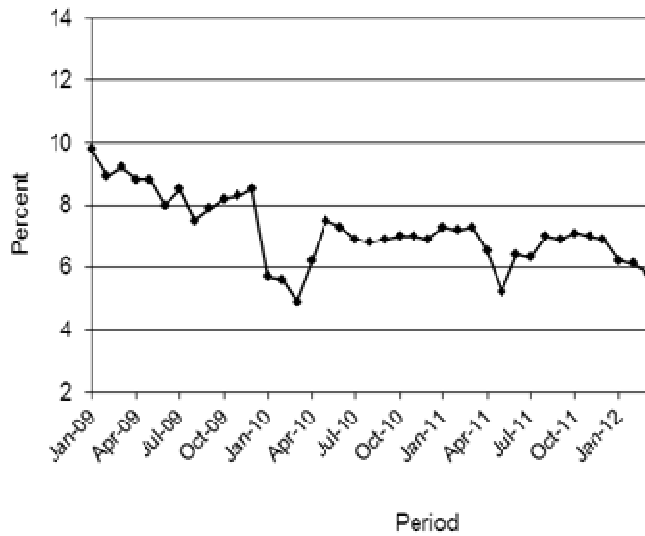
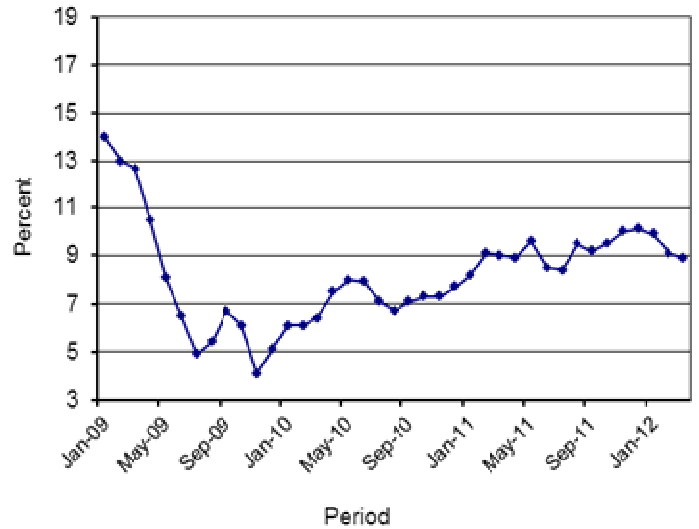


Chart 4: Tradeables Inflation 2009 - 2012



A.N. Majelantle

A.N. Majelantle
Acting Statistician General
13th April 2012

TABLE 1: COST OF LIVING INDEX (September 2006 =100.0)

		Food	Alcohol and Tobacco	Clothing and Footwear	Housing	Furni- ture etc	Health	Trans- port	Commun ication	Rec. & Culture	Educati on	Rest. & Hotels	Other
Weights		21.84	9.29	7.52	11.46	6.76	2.71	18.98	3.01	2.22	3.37	3.27	9.57
(1)	(2)	(3)	(4)	(5)	(6)	(7)	(8)	(9)	(10)	(11)	(12)	(13)	(14)
2009	Jan	145.8	159.7	108.7	114.8	118.2	123.3	107.5	94.7	103.8	113.7	143.5	108.8
	Feb	146.2	161.0	108.6	114.7	118.2	123.2	107.6	94.7	103.6	113.8	145.1	108.9
	Mar	148.2	162.2	109.6	116.5	120.1	123.3	107.9	94.7	103.6	113.8	147.9	108.8
	Apr	148.8	163.2	110.8	116.4	122.7	123.7	108.4	94.7	105.0	113.8	148.8	110.4
	May	149.2	163.4	111.8	116.4	123.7	123.8	108.8	94.6	106.6	113.8	150.4	110.4
	Jun	149.4	163.7	112.5	117.6	125.6	123.9	115.2	94.6	107.1	113.8	153.1	111.5
	July	151.5	164.6	115.5	118.1	127.4	124.2	115.5	94.6	108.8	113.8	154.2	112.9
	Aug	151.7	164.5	115.8	118.1	127.4	124.3	117.6	94.6	109.1	113.8	154.7	113.1
	Sept	151.7	164.7	116.1	120.0	127.8	124.3	118.1	94.6	109.2	113.8	154.5	113.2
	Oct	151.6	164.9	116.1	119.9	128.1	124.3	118.3	94.6	109.2	113.8	153.9	113.2
	Nov	151.9	165.8	117.0	119.9	129.0	124.8	118.6	94.7	109.5	113.8	155.2	113.3
	Dec	151.0	166.0	116.6	120.3	129.9	125.0	119.6	94.6	109.6	113.8	155.3	113.6
2010	Jan	151.1	165.8	116.9	119.9	130.6	124.9	120.6	94.6	109.9	120.4	155.6	114.4
	Feb	151.1	166.0	117.3	120.0	131.2	125.2	121.0	94.6	110.3	120.4	156.5	114.6
	Mar	152.4	167.6	118.9	121.2	133.1	125.4	121.2	94.6	110.8	120.4	158.3	115.0
	Apr	154.4	174.1	119.9	121.8	134.3	127.3	123.4	95.4	111.1	120.4	162.7	119.5
	May	156.0	176.7	120.5	126.3	135.0	127.6	123.6	95.4	111.4	120.5	164.4	119.7
	Jun	156.1	177.4	121.4	126.8	137.1	127.8	130.2	96.4	111.5	120.5	165.9	120.8
	July	156.4	177.4	122.9	127.3	138.0	128.1	130.3	96.4	115.6	120.5	166.6	121.0
	Aug	156.8	177.6	123.6	127.5	138.5	128.2	129.6	96.4	115.8	120.5	167.5	121.1
	Sept	156.7	179.1	125.0	127.7	139.3	128.3	131.6	96.4	116.1	120.5	168.8	121.4
	Oct	156.7	179.7	126.3	127.9	139.6	128.4	131.7	96.4	116.5	120.5	170.6	121.5
	Nov	157.2	180.4	127.4	128.1	140.4	128.4	131.8	96.4	116.7	120.5	171.8	121.5
	Dec	157.6	182.1	127.1	128.8	141.7	128.6	132.2	96.4	116.9	120.5	171.9	121.7
2011	Jan	158.2	183.4	127.5	129.1	142.3	128.7	133.7	96.4	117.1	133.2	172.7	122.6
	Feb	159.1	183.9	127.9	129.4	142.9	128.8	137.5	96.4	117.6	133.2	172.9	122.6
	Mar	160.5	186.0	128.5	130.9	144.6	129.1	137.7	96.4	118.5	133.2	173.7	122.8
	Apr	164.4	188.5	131.0	131.1	145.3	133.0	139.0	96.4	123.4	133.2	175.5	125.7
	May	165.8	191.3	132.1	131.8	146.7	133.3	142.8	91.2	124.1	133.2	179.3	126.1
	Jun	166.6	191.9	133.1	137.6	148.9	133.6	143.3	91.2	124.4	133.2	182.5	126.6
	Jul	167.0	192.2	134.4	138.2	149.5	133.6	143.4	91.2	124.5	133.2	183.4	126.7
	Aug	167.9	192.4	135.1	138.9	150.4	133.7	148.7	91.2	124.7	133.2	183.7	126.8
	Sept	168.8	192.4	135.8	140.0	152.9	133.9	148.8	91.2	124.8	133.2	184.5	126.9
	Oct	169.8	192.8	136.4	140.6	153.9	136.0	149.4	91.2	125.3	133.2	184.6	127.1
	Nov	170.7	192.9	137.2	141.2	154.3	136.1	152.6	91.2	125.3	133.2	185.3	127.2
	Dec	171.8	192.8	138.8	141.8	155.2	136.4	152.6	91.2	125.4	133.2	186.0	127.2
2012	Jan	172.3	193.5	139.6	141.9	155.6	136.5	153.4	91.2	125.6	141.5	187.1	127.7
	Feb	173.3	193.6	140.2	142.0	155.9	136.9	153.5	91.2	125.7	141.5	187.5	127.7
	Mar	174.6	196.0	140.7	142.4	156.3	137.2	153.5	91.2	125.9	141.7	189.5	127.7
% Change on Last month		0.7	1.2	0.3	0.3	0.3	0.2	0.0	0.0	0.2	0.1	1.1	0.0

TABLE 1: COST OF LIVING INDEX(Cont.)

		All Items Index	National Inflation Rate	Monthly Change	Towns & Cities Index	Urban Village Index	Rural Villages Index	Annual Inflation		
								Towns & Cities %	Urban Villages %	Rural %
			%	%	47.33	33.76	18.91			
2009	Jan	123.8	12.8	0.1	121.6	123.9	129.3	11.5	12.5	16.3
	Feb	124.1	11.7	0.2	122.0	124.1	129.4	10.5	11.9	14.7
	Mar	125.2	11.7	0.9	123.0	125.2	130.6	10.3	12.2	14.9
	Apr	126.0	10.2	0.7	123.7	126.1	131.7	8.4	10.4	14.3
	May	126.4	8.4	0.3	124.0	126.3	132.5	6.5	8.7	13.4
	Jun	128.2	7.0	1.4	126.3	128.0	133.5	5.2	7.3	11.9
	Jul	129.4	6.0	1.0	127.3	129.4	134.9	4.0	6.3	11.5
	Aug	130.0	6.1	0.4	127.9	129.9	135.2	4.1	6.2	11.0
	Sept	130.3	7.0	0.3	128.3	130.3	135.4	5.4	7.1	10.8
	Oct	130.4	6.9	0.1	128.5	130.2	135.1	5.8	6.9	9.5
	Nov	130.8	5.0	0.3	128.9	130.5	135.9	4.6	5.1	6.0
	Dec	130.9	5.8	0.1	129.3	130.5	135.5	6.1	5.7	5.4
2010	Jan	131.4	6.1	0.4	129.8	131.2	135.8	6.7	5.9	5.1
	Feb	131.7	6.1	0.2	130.1	131.2	136.4	6.6	5.8	5.4
	Mar	132.6	6.0	0.7	131.0	131.8	138.3	6.5	5.2	5.9
	Apr	135.0	7.1	1.8	133.5	134.0	140.4	7.9	6.3	6.6
	May	136.3	7.8	1.0	134.8	135.4	141.6	8.7	7.2	6.9
	Jun	138.1	7.7	1.3	137.0	137.0	142.8	8.5	7.0	7.0
	July	138.6	7.0	0.3	137.4	137.6	143.2	7.9	6.4	6.2
	Aug	138.7	6.7	0.1	137.8	137.6	142.7	7.7	5.9	5.6
	Sept	139.4	7.0	0.6	138.6	138.7	143.0	8.0	6.4	5.6
	Oct	139.7	7.2	0.2	138.8	139.1	143.0	8.0	6.8	5.9
	Nov	140.1	7.2	0.3	139.5	139.3	143.2	8.2	6.7	5.4
	Dec	140.6	7.4	0.4	139.8	139.9	144.0	8.1	7.2	6.2
2011	Jan	141.8	7.9	0.8	141.3	141.0	144.5	8.8	7.5	6.4
	Feb	142.9	8.5	0.8	142.4	142.2	145.5	9.5	8.4	6.6
	Mar	143.8	8.5	0.7	143.2	143.2	146.6	9.3	8.7	6.0
	Apr	146.0	8.2	1.5	145.3	145.5	148.8	8.9	8.5	6.0
	May	147.6	8.3	1.1	146.9	146.9	150.5	9.0	8.5	6.2
	Jun	149.0	7.9	0.9	148.4	148.1	152.0	8.3	8.1	6.4
	Jul	149.3	7.8	0.3	148.9	148.3	152.3	8.4	7.7	6.3
	Aug	150.8	8.7	1.0	150.4	149.8	153.4	9.1	8.9	7.5
	Sept	151.4	8.6	0.4	150.9	150.6	153.9	8.9	8.6	7.6
	Oct	152.0	8.8	0.4	151.4	151.5	154.6	9.0	8.9	8.1
	Nov	153.0	9.2	0.6	152.4	152.7	155.0	9.3	9.6	8.2
	Dec	153.5	9.2	0.4	152.9	153.1	155.9	9.4	9.4	8.3
2012	Jan	154.3	8.8	0.5	153.5	154.0	157.0	8.6	9.2	8.6
	Feb	154.7	8.2	0.2	153.7	154.4	157.6	8.0	8.6	8.3
	Mar	155.4	8.0	0.5	154.3	155.1	158.6	7.8	8.3	8.2
% Change on										
last month										
		0.5			0.4	0.5	0.7			

Table 2: National Cost-of-Living Group & Section Indices (September 2006 = 100.0)

TABLE 2 :National Cost-of-Living Group and Section Indices (September 2006=100.0)										
Group Section	Weights	This month	Last month	3 months ago	6 months ago	12 months ago	Percentage Change on:			
		Mar 2012	Feb 2012	Dec 2011	Sept 2011	Mar 2011	Last month	3 months ago	6 months ago	12 months ago
1 Food & Non-Alcoholic Beverages	21.84	174.6	173.3	171.8	168.8	160.5	0.7	1.7	3.4	8.8
1.1 Bread & Cereals	6.51	171.5	169.3	166.2	162.4	157.6	1.3	3.2	5.6	8.9
1.2 Meat (Fresh, Chilled & Frozen)	3.15	180.4	179.4	177.7	175.7	169.0	0.6	1.5	2.7	6.8
1.3 Fish (Fresh, Chilled & Frozen)	0.20	172.4	171.7	169.9	169.8	165.4	0.4	1.5	1.6	4.2
1.4 Milk, Cheese & Milk Products	2.19	178.7	178.7	178.4	177.7	162.4	0.0	0.2	0.6	10.1
1.5 Oils & Fats	0.90	213.0	211.8	207.0	206.1	194.2	0.6	2.9	3.4	9.7
1.6 Fruit	0.67	124.6	123.5	119.7	114.8	111.2	0.9	4.1	8.5	12.1
1.7 Vegetables	1.94	171.4	170.8	174.8	169.7	158.6	0.3	(1.9)	1.0	8.1
1.8 Sugar, Jam, Honey, Chocolate & Confectionery	1.36	177.9	177.1	176.3	172.1	155.9	0.5	0.9	3.4	14.1
1.9 Food not else where Classified	2.36	176.3	175.7	174.6	172.5	163.3	0.3	1.0	2.2	8.0
1.10 Coffee, Tea & Cocoa	0.63	193.5	193.1	190.5	187.2	179.5	0.2	1.6	3.4	7.8
1.11 Mineral Waters, Soft Drinks, Fruits & Veg. Juices	1.94	163.6	161.0	159.5	156.7	151.3	1.6	2.6	4.4	8.1
2 Alcoholic Beverages,Tobacco & Narcotics	9.29	196.0	193.6	192.8	192.4	186.0	1.2	1.6	1.9	5.4
2.1 Alcoholic Beverages	8.09	195.8	193.3	192.6	192.3	185.9	1.3	1.6	1.8	5.3
2.2 Tobacco	1.20	197.8	195.7	194.5	193.4	186.6	1.0	1.7	2.3	6.0
3 Clothing and Footwear	7.52	140.7	140.2	138.8	135.8	128.5	0.3	1.4	3.6	9.5
3.1 Clothing	3.33	160.1	159.8	158.1	153.6	143.2	0.2	1.3	4.2	11.8
3.2 Other articles of Clothing	1.82	126.4	125.8	124.1	121.3	115.9	0.4	1.8	4.2	9.1
3.3 Cleaning, Repair & Hire	0.03	170.6	169.8	168.1	164.0	153.4	0.5	1.5	4.0	11.2
3.4 Footwear	2.34	123.6	123.1	122.2	121.3	116.9	0.4	1.1	2.0	5.8
4 Housing, Water, Electr. Gas & Other Fuels	11.46	142.4	142.0	141.8	140.0	130.9	0.3	0.4	1.7	8.8
4.1 Rent paid by Tenants	5.68	128.4	127.7	127.7	126.8	124.1	0.5	0.5	1.3	3.5
4.2 Materials for Maintenance & Repair of dwellings	2.57	141.8	141.2	140.6	137.9	133.8	0.4	0.9	2.8	5.9
4.3 Water Supply & Misc. Services	1.14	102.2	102.2	102.2	102.2	102.2	0.0	0.0	0.0	0.0
4.4 Electricity Gas and other Fuels	2.06	204.0	204.0	203.9	200.1	161.7	0.0	0.0	2.0	26.2
5 Furnishing, H/H Equipment& Routine Maintenance	6.76	156.6	155.9	155.2	152.9	144.6	0.5	0.9	2.4	8.3
5.1 Furniture & Furnishing	2.31	132.3	131.5	130.9	127.8	120.2	0.6	1.1	3.5	10.1
5.2 Carpets & Other Floor Coverings	0.04	145.8	145.8	145.0	143.8	140.4	0.0	0.6	1.4	3.9
5.3 Household Textiles	0.44	145.6	145.5	144.7	141.8	135.1	0.1	0.6	2.7	7.8
5.4 Household Appliances	0.69	133.0	132.7	132.1	130.4	126.9	0.2	0.7	2.0	4.8
5.5 Glassware, Tableware & Household Utensils	0.44	161.1	160.7	159.5	157.2	152.8	0.2	1.0	2.5	5.4
5.6 Small Tools, Miscellaneous Accessories	0.06	165.4	165.4	164.9	162.3	160.0	0.0	0.3	1.9	3.4
5.7 Goods & Services for H/hold Maintanance	2.79	183.6	182.6	182.0	180.2	169.0	0.5	0.9	1.8	8.6

Table 2: National Cost-of-Living Group & Section Indices (September 2006 = 100.0) (Cont.)

6	Health	2.71	137.2	136.9	136.4	133.9	129.1	0.2	0.6	2.4	6.2
6.1	Medical Products, App. & Equip.	0.35	156.8	155.0	152.1	147.1	139.2	1.2	3.1	6.6	12.6
6.2	Out-patient Services	0.66	133.2	133.0	132.5	124.8	124.8	0.2	0.5	6.7	6.7
6.3	Hospital Services	1.71	134.7	134.7	134.7	134.7	128.7	0.0	0.0	0.0	4.6
7	Transport	18.98	153.5	153.5	152.6	148.8	137.7	0.0	0.6	3.2	11.5
7.1	Purchase of Vehicles	5.89	148.9	148.8	146.7	146.7	143.5	0.0	1.5	1.5	3.7
7.2	Operation of Personal Transport	10.92	154.5	154.5	154.3	147.6	132.5	0.0	0.2	4.7	16.6
7.3	Transport Services	2.17	160.9	160.9	160.3	160.3	147.7	0.0	0.4	0.4	9.0
8	Communication	3.01	91.2	91.2	91.2	91.2	96.4	0.0	0.0	0.0	(5.5)
8.1	Postal Services	0.04	170.8	170.8	170.8	170.8	170.8	0.0	0.0	0.0	0.0
8.2	Telephone & Telefax Equipment	0.74	66.6	66.6	66.6	66.6	66.6	0.0	0.0	0.0	0.0
8.3	Telephone & Telefax Services	2.23	97.9	97.9	97.9	97.9	105.0	0.0	0.0	0.0	(6.8)
9	Recreation & Culture	2.22	125.9	125.7	125.4	124.8	118.5	0.2	0.4	0.9	6.2
9.1	Audio Visual, Photographic & Info. Proce. Equip.	1.09	103.0	102.6	102.6	102.5	100.6	0.3	0.4	0.4	2.3
9.2	Other Recreational Items & Equip.	0.18	150.1	150.1	149.0	146.5	140.3	0.0	0.7	2.4	7.0
9.3	Recreational & Cultural Services	0.76	137.5	137.4	137.4	137.0	125.5	0.0	0.0	0.3	9.5
9.4	Newspapers, Books & Stationary	0.19	186.7	186.1	183.5	181.1	171.1	0.3	1.7	3.1	9.1
10	Education	3.37	141.7	141.5	133.2	133.2	133.2	0.1	6.4	6.4	6.4
10.1	Pre-Primary & Primary Education	1.10	173.4	173.0	154.5	154.5	154.5	0.3	12.3	12.3	12.3
10.2	Secondary & Tertiary Education	2.26	126.2	126.2	122.8	122.8	122.8	0.0	2.8	2.8	2.8
11	Restaurants & Hotels	3.27	189.5	187.5	186.0	184.5	173.7	1.1	1.9	2.7	9.1
11.1	Restaurants, Cafes and the Like	3.08	191.9	189.8	188.3	187.0	175.7	1.1	1.9	2.6	9.2
11.2	Accommodation Services	0.19	149.8	149.8	147.9	144.5	140.2	0.0	1.3	3.7	6.8
12	Miscellaneous Goods & Services	9.57	127.7	127.7	127.2	126.9	122.8	0.0	0.5	0.7	4.0
12.1	Personal Care	0.66	147.5	147.1	146.7	144.1	139.6	0.2	0.6	2.4	5.7
12.2	Personal Effects N.E.C.	0.04	126.5	126.4	123.3	118.9	116.6	0.1	2.7	6.4	8.5
12.3	Social Protection	0.14	146.8	146.8	146.8	146.8	146.8	0.0	0.0	0.0	0.0
12.4	Insurance	6.32	129.6	129.6	128.9	128.9	123.9	0.0	0.5	0.5	4.6
12.5	Financial Services	0.18	138.0	137.7	136.7	135.0	128.9	0.2	1.0	2.2	7.1
12.6	Taxes Licences, Fees	2.24	114.7	114.7	114.4	114.3	112.8	0.0	0.2	0.3	1.6
	All-Items Index	100.0	155.4	154.7	153.5	151.4	143.8	0.5	1.2	2.7	8.0

TABLE 3: COST-OF-LIVING INDEX BY TRADEABILITY (September 2006 = 100.0)

Weights	All Items		Non-Tradeables		Domestic Tradeables		Imported Tradeables		All Tradeables		
	Index	Inflation	Index	Inflation	Index	Inflation	Index	Inflation	Index	Inflation	
	100.00		30.92		23.91		45.17		69.08		
2009	Jan	123.8	12.8	117.1	9.8	145.1	23.3	117.2	8.4	126.8	14.0
	Feb	124.1	11.7	117.4	8.9	146.3	23.2	116.9	6.8	127.1	13.0
	Mar	125.2	11.7	118.7	9.2	147.5	21.7	117.8	7.5	127.8	12.7
	Apr	126.0	10.2	119.5	8.8	148.5	21.4	118.6	4.5	128.7	10.5
	May	126.4	8.4	119.7	8.8	148.6	19.9	119.3	1.7	129.2	8.1
	Jun	128.2	7.0	120.9	8.0	148.6	18.0	122.4	0.4	131.2	6.5
	Jul	129.4	6.0	121.5	8.5	149.6	17.6	124.2	-1.7	132.8	4.0
	Aug	130.0	6.1	121.7	7.5	149.5	16.5	125.3	-0.4	133.4	5.4
	Sept	130.3	7.0	122.5	7.9	149.1	14.9	125.7	2.1	133.6	6.7
	Oct	130.4	6.9	122.4	8.4	149.1	13.9	125.8	1.9	133.7	6.1
	Nov	130.8	5.0	122.6	8.3	149.4	3.3	126.5	3.3	134.2	4.1
	Dec	130.9	5.8	123.2	8.5	149.0	1.9	126.6	6.0	134.2	5.1
2010	Jan	131.4	6.1	123.8	5.7	149.3	3.0	127.2	8.5	134.6	6.1
	Feb	131.7	6.1	124.0	5.6	149.5	2.2	127.4	9.0	134.9	6.1
	Mar	132.6	6.0	124.6	4.9	150.5	2.0	128.7	9.3	136.0	6.4
	Apr	135.0	7.1	126.9	6.2	153.7	3.5	130.6	10.1	138.3	7.5
	May	136.3	7.8	128.7	7.5	154.9	4.2	131.7	10.4	139.5	8.0
	Jun	138.1	7.7	129.7	7.3	154.8	4.2	135.1	10.3	141.6	7.9
	July	138.6	7.0	129.9	6.9	155.3	3.8	135.7	9.2	142.2	7.1
	Aug	138.7	6.7	130.0	6.8	155.3	3.8	135.9	8.5	142.4	6.7
	Sept	139.4	7.0	130.9	6.9	155.5	4.3	136.8	8.8	143.1	7.1
	Oct	139.7	7.2	131.0	7.0	155.6	4.3	137.3	9.1	143.4	7.3
	Nov	140.1	7.2	131.2	7.0	155.9	4.3	137.9	9.0	144.0	7.3
	Dec	140.6	7.4	131.6	6.9	156.5	5.0	138.4	9.3	144.5	7.7
2011	Jan	141.8	7.9	132.8	7.3	158.2	5.9	139.2	9.5	145.6	8.2
	Feb	142.9	8.5	132.9	7.2	158.9	6.2	141.3	10.9	147.2	9.1
	Mar	143.8	8.5	133.7	7.3	160.1	6.4	142.2	10.5	148.2	9.0
	Apr	146.0	8.2	135.2	6.5	162.2	5.5	144.8	10.9	150.6	8.9
	May	147.6	8.3	135.3	5.2	163.5	5.5	147.6	12.1	152.9	9.6
	Jun	149.0	7.9	138.0	6.4	164.8	6.5	148.1	9.6	153.6	8.5
	Jul	149.3	7.8	138.0	6.3	165.4	6.5	148.6	9.5	154.2	8.4
	Aug	150.8	8.7	139.0	7.0	165.7	6.7	150.9	11.1	155.8	9.5
	Sept	151.4	8.6	139.9	6.9	166.3	6.9	151.3	10.6	156.3	9.2
	Oct	152.0	8.8	140.3	7.1	167.0	7.4	152.1	10.8	157.0	9.5
	Nov	153.0	9.2	140.4	7.0	167.5	7.4	153.9	11.6	158.4	10.0
	Dec	153.5	9.2	140.7	6.9	168.0	7.4	154.6	11.8	159.1	10.1
2012	Jan	154.3	8.8	141.1	6.2	169.6	7.2	155.3	11.5	160.0	9.9
	Feb	154.7	8.2	141.0	6.1	170.4	7.3	155.7	10.2	160.6	9.1
	Mar	155.4	8.0	141.4	5.8	172.2	7.6	156.1	9.8	161.4	8.9
% Change on last month		0.5		0.3		1.1		0.2		0.5	

TABLE 4: Core Inflation Rates by Exclusion and Trimmed Mean

Year	Month	Consumer Price Index (Trimmed Mean) (September 2006 = 100)	Core Monthly Inflation Rate (Trimmed Mean) (percentage)	Consumer Price Index (Excluding Administered Prices) (September 2006 = 100)	Core Monthly Inflation (Excluding Administered Prices) (percentage)
2009					
	Jan	122.4	11.2	127.7	16.4
	Feb	122.6	10.3	128.1	15.8
	Mar	123.7	10.6	129.4	15.8
	Apr	124.6	9.9	130.3	15.5
	May	125.0	8.7	130.8	14.5
	Jun	126.4	7.5	131.9	13.8
	Jul	127.7	7.4	133.4	14.2
	Aug	128.1	6.9	133.5	13.4
	Sept	128.5	6.8	134.0	12.6
	Oct	127.1	5.8	134.0	11.1
	Nov	129.5	5.3	134.5	7.7
	Dec	127.7	6.4	134.7	7.0
2010					
	Jan	129.7	6.7	135.2	5.9
	Feb	129.0	6.7	135.5	5.8
	Mar	130.0	6.5	136.7	5.6
	Apr	133.1	7.7	139.1	6.8
	May	133.2	8.3	140.2	7.2
	Jun	135.0	8.1	141.0	6.9
	July	136.6	7.6	141.5	6.1
	Aug	135.4	7.2	142.0	6.3
	Sept	136.8	7.4	142.7	6.5
	Oct	137.2	7.6	143.1	6.8
	Nov	137.9	7.6	143.6	6.7
	Dec	137.5	7.7	144.2	7.1
2011					
	Jan	139.6	8.0	145.5	7.6
	Feb	142.1	8.6	146.0	7.7
	Mar	142.6	8.4	147.1	7.6
	Apr	143.4	8.0	149.4	7.4
	May	148.7	8.2	150.5	7.3
	Jun	148.8	7.6	151.4	7.4
	July	150.3	7.4	151.9	7.3
	Aug	153.7	8.4	152.5	7.4
	Sept	154.8	8.1	153.2	7.4
	Oct	155.6	8.3	154.0	7.6
	Nov	156.3	8.5	154.4	7.5
	Dec	156.9	8.5	155.1	7.5
2012					
	Jan	157.9	8.1	156.0	7.2
	Feb	158.0	7.8	156.5	7.2
	Mar	159.2	7.6	157.4	7.0

Prices Collection Coverage for Botswana Consumer Price Index -2006

