

# CONSUMER PRICE INDEX

June 2015



**STATISTICS BOTSWANA**

**Contact Statistician:**  
Phaladi Labobedi

**Tel:** (267) 3671300  
**Fax:** (267) 3952201

Copyrights © Statistics Botswana 2015

**Statistics Botswana.** Private Bag 0024 Botswana  
**Tel:** (267) 367 1300. **Fax:** (267) 395 2201. **Email:** info@statsbots.bw **Website:** www.cso.gov.bw

## CONTENTS

### COMMENTARY

**Section 1:**     **Headline Inflation**

**Section 2:**     **Core Inflation**

### CHARTS

1.     **National Rates of Inflation, January 2012 – June 2015**
2.     **Monthly Changes in the Cost-of-Living Index, January 2012 – June 2015**
3.     **Non-Tradable Inflation Rates, January 2012 – June 2015**
4.     **Tradable Inflation Rates, January 2012 - June 2015**

### TABLES

1.     **Cost-of-Living Index Series (January 2012 – June 2015)**
2.     **National Cost-of-Living Group and Section Indices**
3.     **Cost-of-Living Index by Tradability (January 2012 – June 2015)**
4.     **Core Inflation Rates**
5.     **Annual Average Inflation Rates 2008-2014**

### GLOSSARY

### Section 1: **Headline Inflation**

The annual inflation rate in June 2015 was 3.1 percent, an increase of 0.1 of a percentage point on the May 2015 rate of 3.0 percent. Annual inflation in June 2015 was lower than the 4.6 percent recorded during the same month in 2014. The slowing pace of the annual inflation rate between June 2014 and June 2015 was attributed to the stable prices of commodities in the main component of Transport. Comparison of inflation rate among regions between May 2015 and June 2015, showed that Rural Villages' went down to 3.4 percent from 3.6 percent, Urban Villages' went up to 3.0 percent from 2.8 percent and Cities & Towns increased to 3.1 percent from 3.0 percent.

The June national Consumer Price Index registered an increase of 0.4 percent, moving from 181.6 in May to 182.3 in June. The Urban Villages' index realized an increase of 0.4 percent, moving from 180.1 to 180.8. The Cities & Towns' index went up by 0.4 percent, from 180.2 to 180.9 while Rural Villages' index rose by 0.1 percent, moving from 188.1 to 188.2 between the two months.

Group indices were generally stable between May and June 2015, recording changes of less than one percent, except Housing, Water, Electricity, Gas & Other Fuels which recorded a change of 1.7 percent.

The Housing, Water, Electricity, Gas & Other Fuels group index went up from 168.1 to 171.0, registering an increase of 1.7 percent between May and June. The rise was attributed to the increase in the section index of *Rent paid by Tenants* which went up by 4.4 percent.

The *Furnishing, Household Equipment & Routine Maintenance* group index moved from 185.6 to 186.9, recording an increase of 0.7 percent between May and June. The rise was due to the general increase in the section indices, notably; *Goods & Services for Household Maintenance* section index which went up by 1.3 percent.

The *Clothing and Footwear* group index went up from 172.1 to 173.3, registering an increase of 0.7 percent between May and June. The rise was due to the general increase in the section indices.

The *Restaurants & Hotels* index group went up from 237.7 to 239.2, recording an increase of 0.6 percent between May and June. This rise was attributed to the general increase in the section indices.

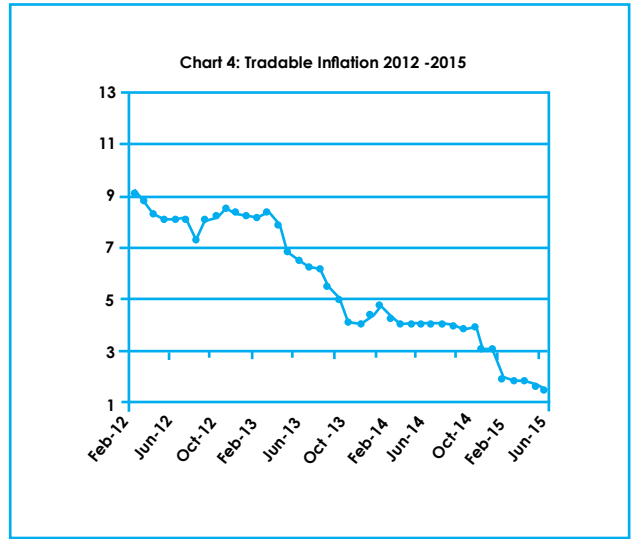
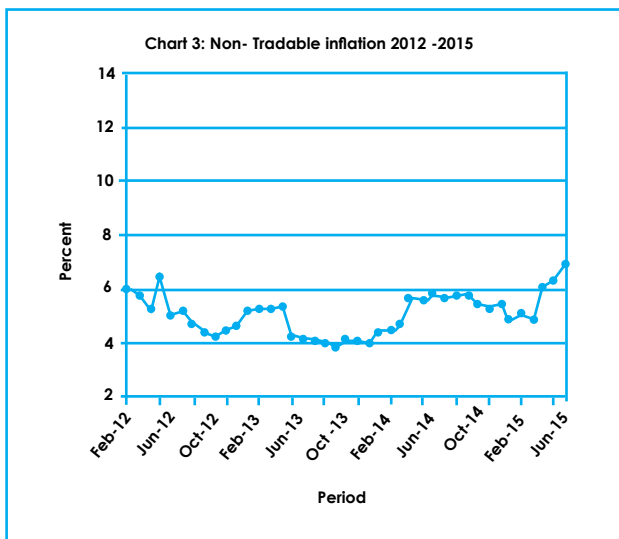
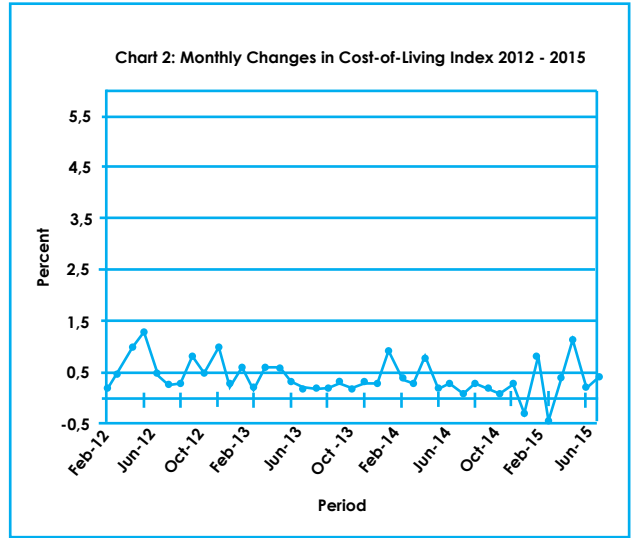
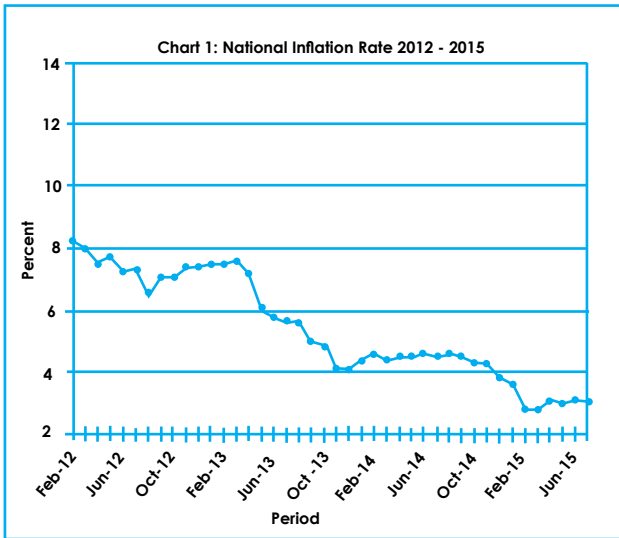
*All-Tradable* inflation rate was 1.5 percent in June, a decrease of 0.2 of a percentage point on the May rate of 1.7 percent. The *Non-Tradable* inflation rate recorded a rise of 0.6 of a percentage point, from 6.3 percent in May to 6.9 percent in June. The *Domestic Tradable* inflation rate dropped from 3.2 percent to 3.0 percent between May and June. The *Imported Tradable* inflation rate registered a decline of 0.2 percent from 0.8 percent in May to 0.6 percent in June.

The *All-Tradable index* moved from 186.9 in May to 187.0 in June. The *Non-Tradable index* moved from 168.9 to 170.7 recording an increase of 1.1 percent between the two months. The *Imported Tradable index* registered an upturn of 0.1 percent, moving from 176.1 to 176.3, while the *Domestic Tradable index* moved from 207.7 to 207.6.

### Section 2: **Core Inflation**

The Trimmed Mean Core Inflation rate registered an increase of 0.1 of a percentage point, moving from 3.5 percent to 3.6 percent. The Core Inflation rate by exclusion was 4.7 percent in June, the same rate as in May 2015.

## CHARTS



**A. N. Majelantle**  
**Statistician General**  
 15<sup>th</sup> July 2015

## TABLES

**TABLE 1: COST OF LIVING INDEX** (September 2006 =100.0)

		Food	Alcohol & Tobacco	Clothing & Footwear	Housing	Furniture etc	Health	Transport	Com- muni- cation	Rec. & Culture	Edu- cation	Rest. & Ho- tels	Miscel- laneous
Weights		21.84	9.29	7.52	11.46	6.76	2.71	18.98	3.01	2.22	3.37	3.27	9.57
(1)	(2)	(3)	(4)	(5)	(6)	(7)	(8)	(9)	(10)	(11)	(12)	(13)	(14)
<b>2012</b>	Jan	172.3	193.5	139.6	141.9	155.6	136.5	153.4	91.2	125.6	141.5	187.1	127.7
	Feb	173.3	193.6	140.2	142.0	155.9	136.9	153.5	91.2	125.7	141.5	187.5	127.7
	Mar	174.6	196.0	140.7	142.4	156.6	137.2	153.5	91.2	125.9	141.7	189.5	127.7
	Apr	177.0	201.2	140.9	142.4	157.5	141.0	153.8	91.7	130.2	141.7	192.7	128.2
	May	178.4	204.7	141.3	147.4	158.1	141.3	157.8	91.7	130.3	141.7	193.7	128.3
	Jun	179.6	205.2	141.9	148.6	160.1	141.5	158.2	91.7	130.4	141.7	194.9	128.4
	Jul	180.4	205.8	142.5	148.4	160.6	142.1	159.3	91.7	130.9	141.7	195.3	128.6
	Aug	181.0	206.1	144.0	148.4	161.2	142.3	159.9	91.7	131.8	141.7	196.1	128.2
	Sept	181.7	206.9	145.5	148.5	161.9	142.6	164.2	91.7	132.1	141.7	199.3	128.2
	Oct	182.8	210.7	146.0	148.4	162.4	142.7	164.4	91.7	132.3	141.7	201.0	128.3
	Nov	183.4	215.5	146.8	148.5	163.0	142.7	168.2	91.7	132.5	141.7	203.8	128.5
	Dec	184.2	216.3	147.5	148.7	163.5	143.1	169.2	91.7	132.6	141.7	204.1	128.6
<b>2013</b>	Jan	185.2	216.9	148.0	148.8	164.0	146.8	170.0	91.7	132.6	148.4	204.6	129.2
	Feb	186.0	217.2	148.6	148.9	164.5	147.2	170.1	91.7	132.8	148.4	204.9	129.2
	Mar	187.1	222.1	149.1	149.5	165.2	147.4	170.4	91.7	133.0	148.4	205.6	129.3
	Apr	187.7	226.1	150.4	152.2	165.8	147.6	170.5	91.7	135.9	148.4	208.2	129.0
	May	188.3	226.7	151.5	152.2	166.3	147.8	170.7	91.7	136.0	148.4	210.1	129.3
	Jun	188.6	226.9	152.3	153.4	167.4	148.4	170.7	91.7	136.1	148.4	210.6	129.3
	Jul	188.8	227.2	152.9	153.5	167.9	148.7	171.2	91.7	136.3	148.4	210.8	129.6
	Aug	189.5	227.5	153.3	153.7	168.2	149.0	171.4	91.7	136.5	148.4	213.0	129.7
	Sept	190.2	228.0	153.8	154.5	169.1	149.1	171.4	92.0	137.1	148.4	213.8	129.8
	Oct	190.7	228.2	154.3	154.7	169.5	150.2	171.5	92.0	137.4	148.4	214.5	130.8
	Nov	191.2	229.2	155.3	154.8	170.8	150.4	172.1	92.0	138.4	148.4	215.8	131.0
	Dec	191.4	231.0	155.9	155.2	171.5	150.7	172.2	92.1	138.6	148.4	218.5	131.1
<b>2014</b>	Jan	191.9	234.8	156.9	155.4	171.8	157.4	173.2	92.1	139.1	159.4	221.9	131.6
	Feb	192.6	239.9	157.7	155.5	171.9	157.6	173.3	92.1	139.3	159.4	223.1	131.6
	Mar	193.1	243.3	158.5	156.5	173.8	157.8	172.2	92.1	139.6	159.4	224.2	131.7
	Apr	193.8	245.9	159.1	158.4	174.0	158.8	172.3	92.1	141.6	159.4	225.2	137.7
	May	194.3	247.5	160.0	158.5	174.4	159.0	172.3	92.1	141.8	159.4	226.2	137.8
	Jun	194.6	247.8	161.1	159.2	176.1	162.4	172.3	92.1	141.9	159.4	226.7	137.9
	Jul	194.9	248.1	161.9	159.2	176.3	162.5	172.5	92.1	142.0	159.4	227.4	137.9
	Aug	195.0	248.2	162.3	159.3	177.0	162.8	174.1	92.1	142.3	159.4	228.5	138.1
	Sept	195.3	248.3	163.1	159.7	178.1	163.1	174.2	92.1	142.7	159.4	229.0	138.2
	Oct	195.5	248.6	163.9	159.8	178.4	163.1	174.3	92.1	142.7	159.4	229.4	138.2
	Nov	196.0	248.7	165.0	159.9	179.1	163.4	175.2	92.1	143.1	159.4	229.9	138.9
	Dec	196.3	248.6	166.1	161.4	180.0	163.5	170.7	92.1	143.5	159.4	230.3	138.9
<b>2015</b>	Jan	196.3	254.2	167.2	161.5	182.0	167.6	171.2	92.1	143.5	169.5	232.0	139.2
	Feb	196.7	256.7	169.2	161.3	183.5	167.7	163.8	92.1	143.9	169.5	235.7	139.5
	Mar	196.7	259.4	170.4	162.3	184.7	167.8	164.0	92.1	144.1	169.5	236.8	139.6
	Apr	196.7	260.6	171.1	168.3	185.1	167.9	164.3	92.1	150.9	169.5	237.1	148.0
	May	196.8	261.3	172.1	168.1	185.6	171.9	164.3	92.6	151.3	169.5	237.7	148.0
	Jun	196.6	261.7	173.3	171.0	186.9	172.2	164.4	92.5	151.3	169.5	239.2	148.7
<b>% Change on last month</b>		<b>(0.1)</b>	<b>0.1</b>	<b>0.7</b>	<b>1.7</b>	<b>0.7</b>	<b>0.2</b>	<b>0.1</b>	<b>(0.1)</b>	<b>(0.0)</b>	<b>0.0</b>	<b>0.6</b>	<b>0.5</b>

**TABLE 1: COST OF LIVING INDEX(Cont.)**

		All Items Index	National Inflation Rate	Monthly Change	Towns & Cities Index	Urban Villages Index	Rural Villages Index	Towns & Cities	Urban Villages	Rural Villages
		100	%	%	47.33	33.76	18.91	%	%	%
<b>2012</b>	Jan	154.3	8.8	0.5	153.5	154.0	157.0	8.6	9.2	8.6
	Feb	154.7	8.2	0.2	153.7	154.4	157.6	8.0	8.6	8.3
	Mar	155.4	8.0	0.5	154.3	155.1	158.6	7.8	8.3	8.2
	Apr	156.9	7.5	1.0	156.0	156.6	159.8	7.3	7.7	7.4
	May	159.0	7.7	1.3	158.6	158.2	161.3	8.0	7.7	7.2
	Jun	159.8	7.3	0.5	159.3	158.9	162.5	7.4	7.3	6.9
	Jul	160.3	7.3	0.3	159.7	159.5	163.2	7.3	7.6	7.1
	Aug	160.8	6.6	0.3	160.0	160.2	163.6	6.4	6.9	6.6
	Sept	162.1	7.1	0.8	161.9	161.2	164.2	7.2	7.0	6.7
	Oct	162.8	7.1	0.5	162.6	161.7	165.3	7.5	6.8	6.9
	Nov	164.4	7.4	1.0	164.2	163.1	167.2	7.7	6.8	7.9
	Dec	164.9	7.4	0.3	164.3	163.9	168.4	7.5	7.1	8.0
<b>2013</b>	Jan	165.9	7.5	0.6	165.0	164.8	170	7.5	7.0	8.3
	Feb	166.2	7.5	0.2	165.2	165.0	170.7	7.5	6.9	8.3
	Mar	167.1	7.6	0.6	166.0	166.2	171.8	7.5	7.2	8.3
	Apr	168.2	7.2	0.6	167.3	167.4	172.1	7.3	6.9	7.7
	May	168.7	6.1	0.3	168.0	167.5	172.5	5.9	5.9	6.9
	Jun	169.1	5.8	0.2	168.1	168.1	173.3	5.5	5.8	6.6
	Jul	169.4	5.7	0.2	168.5	168.3	173.5	5.5	5.5	6.4
	Aug	169.8	5.6	0.2	168.8	168.7	174.0	5.5	5.3	6.4
	Sept	170.2	5.0	0.3	169.1	169.2	174.7	4.5	5.0	6.4
	Oct	170.6	4.8	0.2	169.4	169.6	175.4	4.2	4.9	6.1
	Nov	171.2	4.1	0.3	169.9	170.0	176.4	3.5	4.3	5.5
	Dec	171.7	4.1	0.3	170.2	170.5	177.3	3.6	4.0	5.3
<b>2014</b>	Jan	173.1	4.4	0.9	171.7	172.2	178.6	4.0	4.5	5.0
	Feb	173.9	4.6	0.4	172.6	172.7	179.4	4.5	4.7	5.1
	Mar	174.5	4.4	0.3	173.2	173.4	179.6	4.4	4.3	4.6
	Apr	175.9	4.5	0.8	174.7	174.5	181.2	4.4	4.3	5.3
	May	176.3	4.5	0.2	174.9	175.2	181.5	4.2	4.6	5.2
	Jun	176.8	4.6	0.3	175.5	175.6	182.1	4.4	4.5	5.1
	Jul	177.0	4.5	0.1	175.8	175.9	182.1	4.3	4.5	5.0
	Aug	177.5	4.6	0.3	176.3	176.3	182.7	4.5	4.5	5.0
	Sept	177.8	4.5	0.2	176.4	176.6	183.5	4.3	4.4	5.0
	Oct	178.0	4.3	0.1	176.6	176.7	183.8	4.2	4.2	4.8
	Nov	178.5	4.3	0.3	177.2	177.2	184.3	4.3	4.3	4.5
	Dec	178.1	3.8	(0.3)	176.7	177.0	183.7	3.8	3.8	3.6
<b>2015</b>	Jan	179.5	3.6	0.8	177.9	178.5	185.3	3.6	3.7	3.7
	Feb	178.8	2.8	(0.4)	177.1	177.7	185.1	2.6	2.9	3.2
	Mar	179.4	2.8	0.4	177.5	178.3	186.0	2.5	2.8	3.6
	Apr	181.3	3.1	1.1	180.0	179.7	187.4	3.1	3.0	3.4
	May	181.6	3.0	0.2	180.2	180.1	188.1	3.0	2.8	3.6
	Jun	182.3	3.1	0.4	180.9	180.8	188.2	3.1	3.0	3.4
<b>% Change on last month</b>		<b>0.4</b>			<b>0.4</b>	<b>0.4</b>	<b>0.1</b>			

**TABLE 2 :National Cost-of-Living Group and Section Indices**

(September 2006=100.0)

Group Section	Weights	This month Jun 2015	Last month May 2015	3 months ago March 2014	6 months ago Dec 2014	12 months ago June 2014	Percentage Change on			
							Last month	3 months ago	6 months ago	12 months ago
<b>1 Food &amp; Non-Alcoholic Beverages</b>	<b>21.84</b>	<b>196.6</b>	<b>196.8</b>	<b>196.7</b>	<b>196.3</b>	<b>194.6</b>	<b>(0.1)</b>	<b>(0.1)</b>	<b>0.2</b>	<b>1.0</b>
1.1 Bread & Cereals	6.51	186.8	186.7	187.5	188.8	188.0	0.1	(0.4)	(1.0)	(0.6)
1.2 Meat (Fresh, Chilled & Frozen)	3.15	205.6	205.5	204.7	203.5	201.7	0.1	0.4	1.0	1.9
1.3 Fish (Fresh, Chilled & Frozen)	0.20	211.0	208.1	206.2	201.1	196.2	1.4	2.3	5.0	7.6
1.4 Milk, Cheese & Milk Products	2.19	202.7	202.3	203.6	201.3	194.9	0.2	(0.4)	0.7	4.0
1.5 Oils & Fats	0.90	228.9	230.5	231.8	233.4	234.7	(0.7)	(1.3)	(1.9)	(2.5)
1.6 Fruit	0.67	146.9	151.2	150.7	149.0	141.6	(2.8)	(2.5)	(1.4)	3.7
1.7 Vegetables	1.94	197.6	202.3	203.2	203.2	203.7	(2.3)	(2.8)	(2.7)	(3.0)
1.8 Sugar, Jam, Honey, Chocolate & Confectionery	1.36	206.4	204.4	202.1	200.2	200.5	0.9	2.1	3.1	2.9
1.9 Food not else where Classified	2.36	199.7	198.3	196.4	194.2	192.8	0.7	1.7	2.9	3.6
1.10 Coffee, Tea & Cocoa	0.63	220.2	220.3	219.7	219.7	215.7	(0.0)	0.2	0.2	2.1
1.11 Mineral Waters, Soft Drinks, Fruits & Veg. Juices	1.94	188.9	189.3	188.4	187.7	186.8	(0.2)	0.3	0.6	1.2
<b>2 Alcoholic Beverages, Tobacco &amp; Narcotics</b>	<b>9.29</b>	<b>261.7</b>	<b>261.3</b>	<b>259.4</b>	<b>248.6</b>	<b>247.8</b>	<b>0.1</b>	<b>0.9</b>	<b>5.2</b>	<b>5.6</b>
2.1 Alcoholic Beverages	8.09	258.0	257.9	257.1	245.5	245.0	0.0	0.3	5.1	5.3
2.2 Tobacco	1.20	286.4	284.6	275.0	270.0	266.7	0.6	4.2	6.1	7.4
<b>3 Clothing and Footwear</b>	<b>7.52</b>	<b>173.3</b>	<b>172.1</b>	<b>170.4</b>	<b>166.1</b>	<b>161.1</b>	<b>0.7</b>	<b>1.7</b>	<b>4.3</b>	<b>7.6</b>
3.1 Clothing	3.33	201.4	199.8	198.1	191.8	184.4	0.8	1.6	5.0	9.2
3.2 Other articles of Clothing	1.82	153.3	152.6	150.4	148.2	145.2	0.4	2.0	3.4	5.6
3.3 Cleaning, Repair & Hire	0.03	206.2	204.1	203.8	203.1	201.9	1.0	1.2	1.6	2.2
3.4 Footwear	2.34	148.4	147.4	146.0	143.0	139.6	0.7	1.6	3.7	6.3
<b>4 Housing, Water, Electr. Gas &amp; Other Fuels</b>	<b>11.46</b>	<b>171.0</b>	<b>168.1</b>	<b>162.3</b>	<b>161.4</b>	<b>159.2</b>	<b>1.7</b>	<b>5.4</b>	<b>6.0</b>	<b>7.4</b>
4.1 Rent paid by Tenants	5.68	150.0	143.7	143.7	141.7	137.8	4.4	4.4	5.9	8.9
4.2 Materials for Maintenance & Repair of dwellings	2.57	153.0	153.9	153.8	152.6	151.5	(0.6)	(0.6)	0.2	1.0
4.3 Water Supply & Misc. Services	1.14	202.8	202.8	160.9	160.9	160.9	0.0	26.0	26.0	26.0
4.4 Electricity Gas and other Fuels	2.06	233.7	234.1	224.9	226.8	226.7	(0.2)	3.9	3.1	3.1
<b>5 Furnishing, H/H Equipment &amp; Routine Maintenance</b>	<b>6.76</b>	<b>186.9</b>	<b>185.6</b>	<b>184.7</b>	<b>180.0</b>	<b>176.1</b>	<b>0.7</b>	<b>1.1</b>	<b>3.8</b>	<b>6.1</b>
5.1 Furniture & Furnishing	2.31	165.7	165.4	164.7	155.3	149.7	0.2	0.6	6.7	10.7
5.2 Carpets & Other Floor Coverings	0.04	172.0	171.6	171.2	165.5	158.8	0.3	0.5	4.0	8.3
5.3 Household Textiles	0.44	171.2	170.3	169.6	167.3	163.8	0.5	0.9	2.3	4.5
5.4 Household Appliances	0.69	158.7	158.6	156.4	153.7	150.0	0.0	1.4	3.3	5.8
5.5 Glassware, Tableware & Household Utensils	0.44	191.6	191.4	190.4	187.9	185.8	0.1	0.6	1.9	3.1
5.6 Small Tools, Miscellaneous Accessories	0.06	185.1	184.5	183.8	182.4	180.1	0.3	0.7	1.5	2.8
5.7 Goods & Services for H/hold Maintenance	2.79	213.3	210.6	210.0	207.7	204.9	1.3	1.6	2.7	4.1

**TABLE 2 :National Cost-of-Living Group and Section Indices** (September 2006=100.0) cont...

Group Section	Weights	This month June 2015	Last month May 2015	3 months ago March 2014	6 months ago Dec 2014	12 months ago June 2014	Percentage Change on			
							Last month	3 months ago	6 months ago	12 months ago
<b>6 Health</b>	<b>2.71</b>	<b>172.2</b>	<b>171.9</b>	<b>167.8</b>	<b>163.5</b>	<b>162.4</b>	<b>0.2</b>	<b>2.6</b>	<b>5.3</b>	<b>6.0</b>
6.1 Medical Products, App. & Equip.	0.35	215.2	214.4	212.5	209.7	202.7	0.4	1.3	2.6	6.2
6.2 Out-patient Services	0.66	186.0	185.3	184.9	168.4	167.7	0.4	0.6	10.4	10.9
6.3 Hospital Services	1.71	158.1	158.1	152.1	152.1	152.1	0.0	3.9	3.9	3.9
<b>7 Transport</b>	<b>18.98</b>	<b>164.4</b>	<b>164.3</b>	<b>164.0</b>	<b>170.7</b>	<b>172.3</b>	<b>0.1</b>	<b>0.3</b>	<b>(3.7)</b>	<b>(4.6)</b>
7.1 Purchase of Vehicles	5.89	158.9	159.2	159.2	158.4	151.0	(0.2)	(0.2)	0.3	5.3
7.2 Operation of Personal Transport	10.92	164.8	164.3	163.8	176.0	182.8	0.3	0.6	(6.4)	(9.9)
7.3 Transport Services	2.17	177.8	177.8	177.8	177.8	177.8	0.0	0.0	0.0	0.0
<b>8 Communication</b>	<b>3.01</b>	<b>92.5</b>	<b>92.6</b>	<b>92.1</b>	<b>92.1</b>	<b>92.1</b>	<b>(0.1)</b>	<b>0.5</b>	<b>0.5</b>	<b>0.5</b>
8.1 Postal Services	0.04	261.2	261.2	226.1	226.1	226.1	0.0	15.5	15.5	15.5
8.2 Telephone & Telefax Equipment	0.74	66.6	66.6	66.6	66.6	66.6	0.0	0.0	0.0	0.0
8.3 Telephone & Telefax Services	2.23	98.1	98.2	98.2	98.2	98.1	(0.1)	(0.1)	(0.1)	(0.0)
<b>9 Recreation &amp; Culture</b>	<b>2.22</b>	<b>151.3</b>	<b>151.3</b>	<b>144.1</b>	<b>143.5</b>	<b>141.9</b>	<b>(0.0)</b>	<b>4.9</b>	<b>5.4</b>	<b>6.6</b>
9.1 Audio Visual, Photographic & Info. Proce. Equip.	1.09	114.3	114.1	112.1	111.7	109.6	0.1	1.9	2.3	4.2
9.2 Other Recreational Items & Equip.	0.18	175.9	176.7	175.8	173.6	171.0	(0.4)	0.1	1.3	2.9
9.3 Recreational & Cultural Services	0.76	178.2	178.2	161.9	161.8	161.7	(0.1)	10.0	10.1	10.2
9.4 Newspapers, Books & Stationary	0.19	229.8	229.6	223.9	221.8	218.0	0.1	2.6	3.6	5.4
<b>10 Education</b>	<b>3.37</b>	<b>169.5</b>	<b>169.5</b>	<b>169.5</b>	<b>159.4</b>	<b>159.4</b>	<b>0.0</b>	<b>0.0</b>	<b>6.3</b>	<b>6.3</b>
10.1 Pre-Primary & Primary Education	1.10	225.7	225.7	225.7	210.4	210.4	0.0	0.0	7.3	7.3
10.2 Secondary & Tertiary Education	2.26	142.1	142.1	142.1	134.5	134.5	0.0	0.0	5.6	5.6
<b>11 Restaurants &amp; Hotels</b>	<b>3.27</b>	<b>239.2</b>	<b>237.7</b>	<b>236.8</b>	<b>230.3</b>	<b>226.7</b>	<b>0.6</b>	<b>1.0</b>	<b>3.8</b>	<b>5.5</b>
11.1 Restaurants, Cafes and the Like	3.08	243.2	241.7	240.8	234.1	230.3	0.6	1.0	3.9	5.6
11.2 Accommodation Services	0.19	173.0	172.7	171.0	168.4	167.4	0.2	1.2	2.8	3.4
<b>12 Miscellaneous Goods &amp; Services</b>	<b>9.57</b>	<b>148.7</b>	<b>148.0</b>	<b>139.6</b>	<b>138.9</b>	<b>137.9</b>	<b>0.5</b>	<b>6.5</b>	<b>7.1</b>	<b>7.9</b>
12.1 Personal Care	0.66	166.0	165.1	164.9	162.4	161.4	0.5	0.7	2.2	2.9
12.2 Personal Effects N.E.C.	0.04	150.4	149.7	148.9	146.6	141.6	0.4	1.0	2.6	6.2
12.3 Social Protection	0.14	214.9	210.5	210.5	189.5	189.5	2.1	2.1	13.4	13.4
12.4 Insurance	6.32	150.9	150.9	138.2	138.2	137.3	0.0	9.2	9.2	9.9
12.5 Financial Services	0.18	156.0	155.7	153.8	152.9	151.2	0.2	1.4	2.0	3.1
12.6 Taxes Licences, Fees	2.24	132.8	130.3	130.3	129.6	128.3	1.9	1.9	2.5	3.5
<b>All-Items Index</b>	<b>100.0</b>	<b>182.3</b>	<b>181.6</b>	<b>179.4</b>	<b>178.1</b>	<b>176.8</b>	<b>0.4</b>	<b>1.6</b>	<b>2.3</b>	<b>3.1</b>



**TABLE 3: COST-OF-LIVING INDEX BY TRADABILITY** (September 2006 = 100.0)

		All Items		Non-Tradable		Domestic Tradable		Imported Tradable		All Tradable	
		Index	Inflation	Index	Inflation	Index	Inflation	Index	Inflation	Index	Inflation
<b>Weights</b>		<b>100.00</b>		<b>30.92</b>		<b>23.91</b>		<b>45.17</b>		<b>69.08</b>	
<b>2012</b>	Jan	154.3	<b>8.8</b>	141.1	<b>6.2</b>	169.6	<b>7.2</b>	155.3	<b>11.5</b>	160.0	<b>9.9</b>
	Feb	154.7	<b>8.2</b>	141.0	<b>6.1</b>	170.4	<b>7.3</b>	155.7	<b>10.2</b>	160.6	<b>9.1</b>
	Mar	155.4	<b>8.0</b>	141.4	<b>5.8</b>	172.2	<b>7.6</b>	156.1	<b>9.8</b>	161.4	<b>8.9</b>
	Apr	156.9	<b>7.5</b>	142.4	<b>5.3</b>	176.0	<b>8.5</b>	156.7	<b>8.2</b>	163.2	<b>8.3</b>
	May	159.0	<b>7.7</b>	144.2	<b>6.5</b>	178.0	<b>8.9</b>	158.9	<b>7.7</b>	165.3	<b>8.1</b>
	Jun	159.8	<b>7.3</b>	145.0	<b>5.1</b>	178.7	<b>8.4</b>	159.7	<b>7.8</b>	166.0	<b>8.1</b>
	Jul	160.3	<b>7.3</b>	145.2	<b>5.2</b>	179.0	<b>8.2</b>	160.5	<b>8.0</b>	166.7	<b>8.1</b>
	Aug	160.8	<b>6.6</b>	145.7	<b>4.8</b>	179.3	<b>8.2</b>	161.1	<b>6.7</b>	167.2	<b>7.3</b>
	Sept	162.1	<b>7.1</b>	146.1	<b>4.4</b>	179.9	<b>8.2</b>	163.4	<b>8.0</b>	168.9	<b>8.1</b>
	Oct	162.8	<b>7.1</b>	146.3	<b>4.3</b>	181.6	<b>8.7</b>	164.0	<b>7.8</b>	169.9	<b>8.2</b>
	Nov	164.4	<b>7.4</b>	146.7	<b>4.5</b>	183.7	<b>9.7</b>	165.9	<b>7.8</b>	172.0	<b>8.5</b>
	Dec	164.9	<b>7.4</b>	147.3	<b>4.7</b>	184.5	<b>9.8</b>	166.3	<b>7.5</b>	172.5	<b>8.4</b>
<b>2013</b>	Jan	165.9	<b>7.5</b>	148.4	<b>5.2</b>	185.6	<b>9.5</b>	167.1	<b>7.6</b>	173.4	<b>8.3</b>
	Feb	166.2	<b>7.5</b>	148.5	<b>5.3</b>	186.0	<b>9.2</b>	167.5	<b>7.6</b>	173.8	<b>8.2</b>
	Mar	167.1	<b>7.6</b>	148.8	<b>5.3</b>	188.4	<b>9.4</b>	168.1	<b>7.7</b>	175.0	<b>8.4</b>
	Apr	168.2	<b>7.2</b>	150.1	<b>5.4</b>	190.9	<b>8.4</b>	168.4	<b>7.5</b>	176.0	<b>7.9</b>
	May	168.7	<b>6.1</b>	150.4	<b>4.3</b>	191.4	<b>7.5</b>	168.9	<b>6.3</b>	176.5	<b>6.8</b>
	Jun	169.1	<b>5.8</b>	151.1	<b>4.2</b>	191.1	<b>6.9</b>	169.5	<b>6.2</b>	176.8	<b>6.5</b>
	Jul	169.4	<b>5.7</b>	151.2	<b>4.1</b>	191.1	<b>6.8</b>	170.1	<b>6.0</b>	177.2	<b>6.3</b>
	Aug	169.8	<b>5.6</b>	151.4	<b>4.0</b>	191.4	<b>6.8</b>	170.5	<b>5.8</b>	177.6	<b>6.2</b>
	Sept	170.2	<b>5.0</b>	151.8	<b>3.9</b>	191.9	<b>6.6</b>	171.0	<b>4.7</b>	178.1	<b>5.5</b>
	Oct	170.6	<b>4.8</b>	152.3	<b>4.1</b>	192.1	<b>5.8</b>	171.4	<b>4.5</b>	178.5	<b>5.0</b>
	Nov	171.6	<b>4.1</b>	152.8	<b>4.1</b>	192.9	<b>5.0</b>	171.9	<b>3.6</b>	179.1	<b>4.1</b>
	Dec	171.7	<b>4.1</b>	153.3	<b>4.1</b>	193.3	<b>4.8</b>	172.4	<b>3.7</b>	179.5	<b>4.1</b>
<b>2014</b>	Jan	173.1	<b>4.4</b>	154.9	<b>4.4</b>	196.4	<b>5.8</b>	173.1	<b>3.6</b>	181.0	<b>4.4</b>
	Feb	173.9	<b>4.6</b>	155.1	<b>4.5</b>	198.9	<b>6.9</b>	173.4	<b>3.5</b>	182.1	<b>4.8</b>
	Mar	174.5	<b>4.4</b>	155.9	<b>4.7</b>	199.7	<b>6.0</b>	173.7	<b>3.3</b>	182.5	<b>4.3</b>
	Apr	175.9	<b>4.5</b>	158.7	<b>5.7</b>	200.6	<b>5.1</b>	174.2	<b>3.4</b>	183.2	<b>4.1</b>
	May	176.3	<b>4.5</b>	158.9	<b>5.6</b>	201.2	<b>5.1</b>	174.8	<b>3.5</b>	183.8	<b>4.1</b>
	Jun	176.8	<b>4.6</b>	159.8	<b>5.8</b>	201.5	<b>5.4</b>	175.2	<b>3.4</b>	184.1	<b>4.1</b>
	Jul	177.0	<b>4.5</b>	159.8	<b>5.7</b>	201.7	<b>5.5</b>	175.5	<b>3.2</b>	184.4	<b>4.1</b>
	Aug	177.5	<b>4.6</b>	160.1	<b>5.8</b>	201.8	<b>5.4</b>	176.3	<b>3.4</b>	185.0	<b>4.1</b>
	Sept	177.8	<b>4.5</b>	160.6	<b>5.8</b>	201.6	<b>5.1</b>	176.7	<b>3.3</b>	185.3	<b>4.0</b>
	Oct	178.0	<b>4.3</b>	160.6	<b>5.5</b>	201.7	<b>5.0</b>	177.0	<b>3.3</b>	185.5	<b>3.9</b>
	Nov	178.5	<b>4.3</b>	160.9	<b>5.3</b>	201.7	<b>4.6</b>	178.0	<b>3.5</b>	186.2	<b>4.0</b>
	Dec	178.1	<b>3.8</b>	161.6	<b>5.4</b>	201.7	<b>4.3</b>	176.6	<b>2.4</b>	185.2	<b>3.1</b>
<b>2015</b>	Jan	179.5	<b>3.6</b>	162.5	<b>4.9</b>	204.7	<b>4.2</b>	177.4	<b>2.5</b>	186.7	<b>3.1</b>
	Feb	178.8	<b>2.8</b>	163.0	<b>5.1</b>	205.6	<b>3.4</b>	175.0	<b>0.9</b>	185.4	<b>1.9</b>
	Mar	179.4	<b>2.8</b>	163.6	<b>4.9</b>	206.9	<b>3.6</b>	175.3	<b>1.0</b>	186.1	<b>1.9</b>
	Apr	181.3	<b>3.1</b>	168.4	<b>6.1</b>	207.6	<b>3.5</b>	175.9	<b>0.9</b>	186.7	<b>1.9</b>
	May	181.6	<b>3.0</b>	168.9	<b>6.3</b>	207.7	<b>3.2</b>	176.1	<b>0.8</b>	186.9	<b>1.7</b>
	Jun	182.3	<b>3.1</b>	170.7	<b>6.9</b>	207.6	<b>3.0</b>	176.3	<b>0.6</b>	187.0	<b>1.5</b>
<b>% Change on last month</b>		<b>0.4</b>		<b>1.1</b>		<b>(0.0)</b>		<b>0.1</b>		<b>0.0</b>	

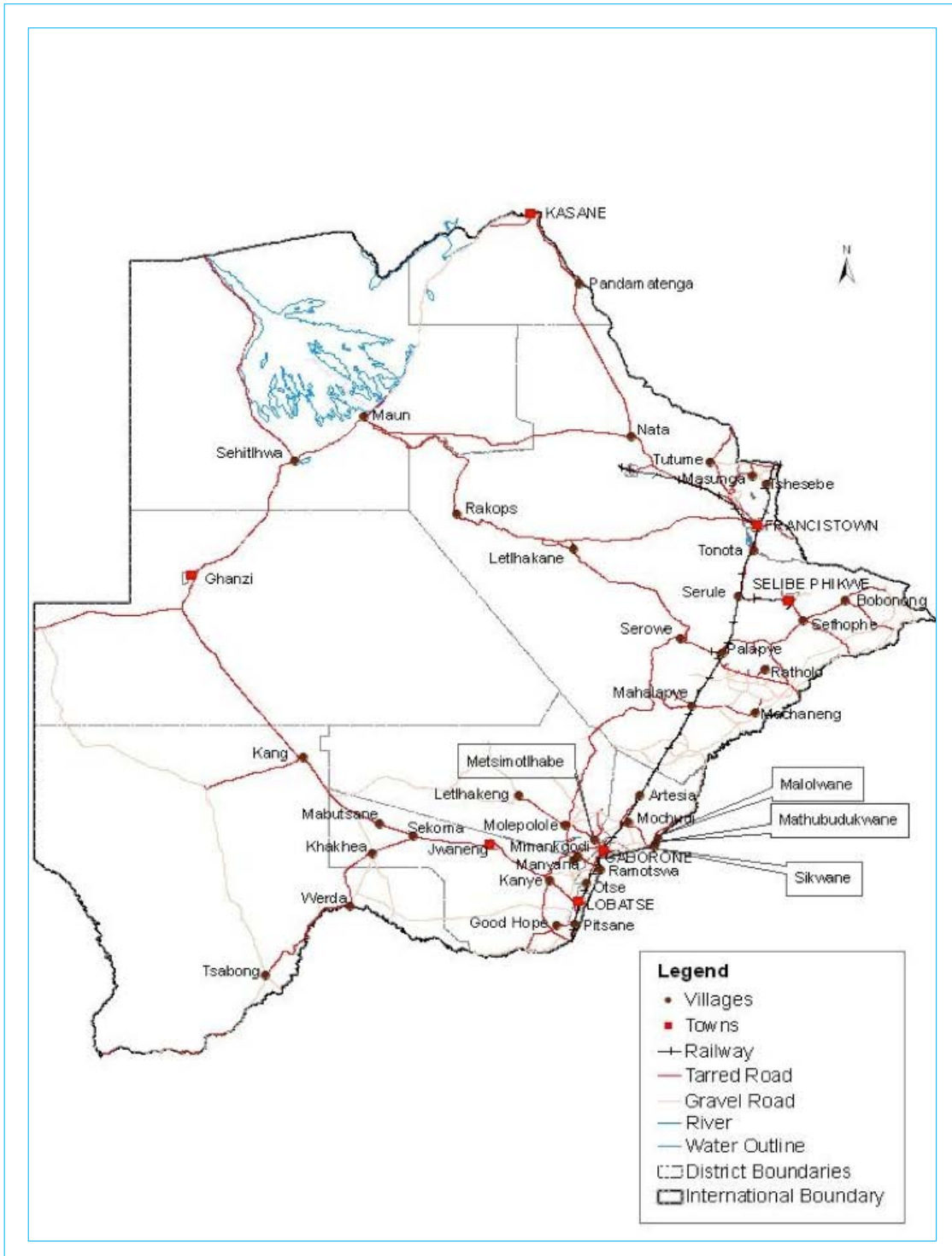
**TABLE 4: Core Inflation Rates by Exclusion and Trimmed Mean**

Year	Month	Consumer Price Index (Trimmed Mean) (September 2006 = 100)	Core Monthly Inflation Rate (Trimmed Mean) (percentage)	Consumer Price Index (Excluding Administered Prices) (September 2006 = 100)	Core Monthly Inflation (Excluding Administered Prices) (percentage)
<b>2012</b>					
	Jan	157.9	<b>8.1</b>	156.0	<b>7.2</b>
	Feb	158.0	<b>7.8</b>	156.5	<b>7.2</b>
	Mar	159.2	<b>7.6</b>	157.4	<b>7.0</b>
	Apr	158.9	<b>7.3</b>	159.2	<b>6.6</b>
	May	160.7	<b>7.3</b>	160.2	<b>6.5</b>
	Jun	163.9	<b>6.8</b>	161.2	<b>6.4</b>
	Jul	164.5	<b>6.8</b>	161.8	<b>6.5</b>
	Aug	164.0	<b>6.3</b>	162.5	<b>6.6</b>
	Sept	165.6	<b>6.5</b>	163.2	<b>6.5</b>
	Oct	163.7	<b>6.7</b>	164.1	<b>6.6</b>
	Nov	165.0	<b>7.1</b>	165.1	<b>6.9</b>
	Dec	165.7	<b>7.1</b>	165.7	<b>6.8</b>
<b>2013</b>					
	Jan	166.8	<b>7.2</b>	166.8	<b>6.9</b>
	Feb	167.2	<b>7.2</b>	167.2	<b>6.9</b>
	Mar	168.3	<b>7.3</b>	168.4	<b>7.0</b>
	Apr	172.2	<b>6.8</b>	169.4	<b>6.4</b>
	May	166.9	<b>6.0</b>	170.0	<b>6.1</b>
	Jun	168.4	<b>5.7</b>	170.3	<b>5.7</b>
	Jul	168.7	<b>5.5</b>	170.7	<b>5.5</b>
	Aug	169.1	<b>5.4</b>	171.1	<b>5.3</b>
	Sept	169.8	<b>4.7</b>	171.7	<b>5.2</b>
	Oct	171.5	<b>4.7</b>	172.2	<b>4.9</b>
	Nov	176.1	<b>4.0</b>	172.9	<b>4.7</b>
	Dec	174.8	<b>4.0</b>	173.5	<b>4.7</b>
<b>2014</b>					
	Jan	173.9	<b>4.1</b>	175.4	<b>5.2</b>
	Feb	173.4	<b>4.1</b>	176.3	<b>5.5</b>
	Mar	175.1	<b>4.0</b>	177.1	<b>5.2</b>
	Apr	175.0	<b>4.1</b>	178.2	<b>5.2</b>
	May	175.4	<b>4.1</b>	178.8	<b>5.2</b>
	Jun	177.8	<b>4.2</b>	179.4	<b>5.3</b>
	Jul	178.0	<b>4.2</b>	179.7	<b>5.3</b>
	Aug	177.6	<b>4.2</b>	180.3	<b>5.3</b>
	Sept	177.8	<b>4.1</b>	180.7	<b>5.2</b>
	Oct	179.0	<b>4.0</b>	180.9	<b>5.1</b>
	Nov	179.6	<b>3.9</b>	181.5	<b>5.0</b>
	Dec	176.6	<b>3.7</b>	182.0	<b>4.9</b>
<b>2015</b>					
	Jan	178.5	<b>3.6</b>	183.7	<b>4.8</b>
	Feb	178.6	<b>3.2</b>	184.8	<b>4.8</b>
	Mar	179.2	<b>3.3</b>	185.6	<b>4.8</b>
	Apr	184.1	<b>3.6</b>	186.7	<b>4.8</b>
	May	184.4	<b>3.5</b>	187.1	<b>4.7</b>
	Jun	185.1	<b>3.6</b>	187.9	<b>4.7</b>

**Table 5: Average Annual Inflation ( September 2006=100)**

		YEAR							
Group	Weights	2008	2009	2010	2011	2012	2013	2014	
1	Food & Non-Alcoholic Beverages	21.84	20.2	14.7	3.6	6.9	8.0	5.4	3.0
2	Alcoholic Beverages,Tobacco & Narcotics	9.29	13.2	35.2	7.1	8.4	7.6	10.3	9.0
3	Clothing and Footwear	7.52	2.0	8.4	8.0	8.9	7.5	6.3	6.0
4	Housing, Water, Electr. Gas & Other Fuels	11.46	8.1	4.8	6.4	8.4	7.7	4.3	3.9
5	Furnishing, H/H Equipment& Routine Maintenance	6.76	6.0	11.9	9.4	9.0	7.3	4.9	5.0
6	Health	2.71	11.3	5.5	2.7	4.5	5.9	5.5	8.3
7	Transport	18.98	21.2	(8.4)	12.1	13.2	10.8	7.3	1.2
8	Communication	3.01	(0.3)	(0.3)	1.2	(3.0)	(1.4)	0.3	0.3
9	Recreation & Culture	2.22	2.3	5.0	6.0	8.3	5.8	4.5	4.2
10	Education	3.37	3.9	3.9	5.8	10.6	6.4	4.7	7.4
11	Restaurants & Hotels	3.27	12.7	18.8	9.0	9.3	8.4	7.9	7.6
12	Miscellaneous Goods & Services	9.57	4.9	3.8	7.0	5.3	2.0	1.2	5.2
	All-Items Index	<b>100.0</b>	<b>12.6</b>	<b>8.2</b>	<b>6.9</b>	<b>8.5</b>	<b>7.5</b>	<b>5.9</b>	<b>4.4</b>

**PRICES COLLECTION COVERAGE FOR BOTSWANA CONSUMER PRICE INDEX (CPI)- 2015**



## Glossary

**Consumer Price Index (CPI)** is an index which measures price changes in goods and services with reference to a base period.

**Inflation** is a measurement of prices movement of goods and services in a particular country.

**Domestic Tradable** refers to the goods and services which a country (Botswana) can export to other countries.

**Imported Tradable** represents the goods and services which a country (Botswana) imports from other countries (trading partners).

**Non-Tradable** refers to the goods and services which a country cannot either export or import to other countries.

**All –Tradable** refers to the total of **Domestic** and **Imported tradable**.

**Trimmed Mean Core Inflation**- attempts to remove 8 percent (by weight) of the commodity sub-groups with the largest price changes at each of the ends of an ordered series of price changes in any given month.

**Core inflation by Exclusion** is a measure used to remove the volatility inherent in prices that are only adjusted periodically and not always in response to currently prevailing market forces.