



STATISTICS BOTSWANA

CONSUMER PRICE INDEX

FEBRUARY 2016



Copyrights © Statistics Botswana 2016

Contact Statistician:
Phaladi Labobedi

Tel: (267) 3671300
Fax: (267) 3952201

Statistics Botswana. Private Bag 0024 Botswana
Tel: (267) 367 1300. **Fax:** (267) 395 2201. **Email:** info@statsbots.bw **Website:** www.cso.gov.bw

CONTENTS

COMMENTARY

Section 1: **Headline Inflation**

Section 2: **Core Inflation**

CHARTS

1. **National Rates of Inflation, January 2013 – February 2016**
2. **Monthly Changes in the Cost-of-Living Index, January 2013 – February 2016**
3. **Non-Tradable Inflation Rates, January 2013 – February 2016**
4. **Tradable Inflation Rates, January 2013 – February 2016**

TABLES

1. **Cost-of-Living Index Series (January 2013 – February 2016)**
2. **National Cost-of-Living Group and Section Indices**
3. **Cost-of-Living Index by Tradability (January 2013 – February 2016)**
4. **Core Inflation Rates**
5. **Annual Average Inflation Rates 2008-2015**

GLOSSARY

COMMENTARY

Section 1: **Headline Inflation**

The inflation rate rose to 3.0 percent in February 2016 compared to the January rate of 2.7 percent. Annual inflation in February 2016 was higher than the 2.8 percent recorded during the same month in 2015. The acceleration of the annual inflation rate between February 2015 and February 2016 was mainly due to the increase in prices of commodities in the Housing, Water, Electricity, Gas and Other Fuels Index group.

The inflation rates for regions between January 2016 and February 2016 indicated that Rural Villages' went up to 3.1 percent from 2.8 percent, Cities & Towns moved to 2.9 percent from 2.7 percent and Urban Villages' increased to 3.2 percent from 2.6 percent.

The February national Consumer Price index moved from 184.3 in January to 184.2 in February 2016. The Rural Villages index realized an increase of 0.2 percent, advancing from 190.5 to 190.9. The Cities & Towns index dropped by 0.2 percent, moving from 182.7 in January to 182.3 in February, while Urban Villages index registered an increase of 0.1 percent, moving from 183.1 to 183.3 between the two months.

Group indices were generally stable between January and February 2016, recording changes of less than 1.0 percent, except Transport which recorded a negative change of 1.4 percent.

The Transport index group registered a decrease of 1.4 percent, from 160.9 in January to 158.6 in February. The deceleration was mainly attributable to a decline in the constituent section indices of Purchase of Vehicles (2.3 percent) and Operation of Personal Transport (1.3 percent). This turnaround in the Operation of Personal Transport section index was due to the drop in retail pump prices for petrol by P0.15 and diesel by P0.45 per liter, which effected on the 1st February 2016.

The Clothing and Footwear index group went up from 180.4 to 181.6, registering an increase of 0.7 percent between January and February. The rise was owing to the general increase in the section indices.

The Food & Non-Alcoholic Beverages index group advanced from 198.6 to 199.8, recording a rise of 0.6 percent between January and February. The acceleration was due to the general increase in the section indices, notably Vegetables (4.8 percent).

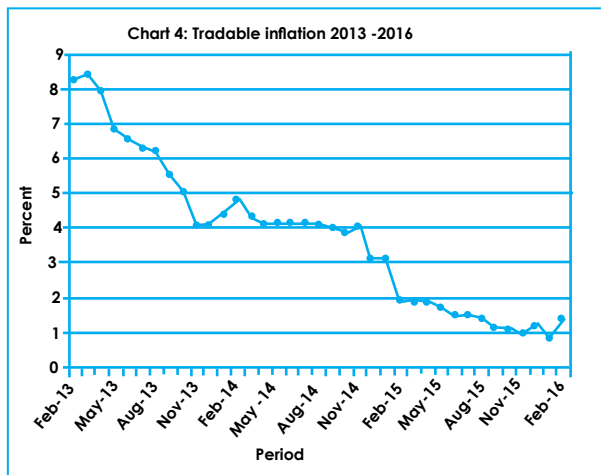
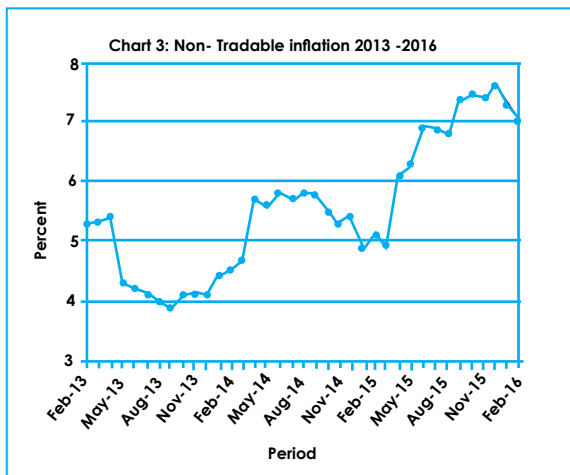
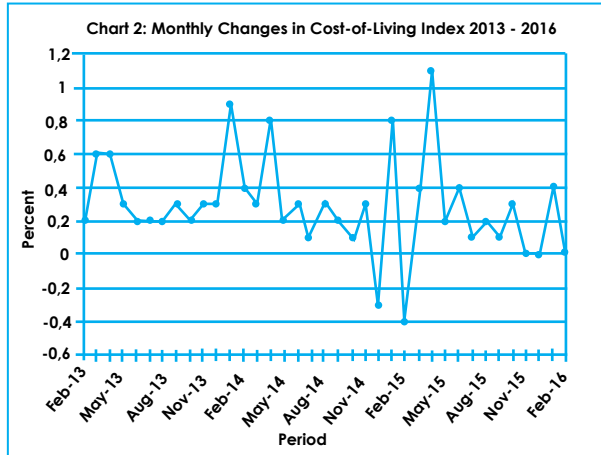
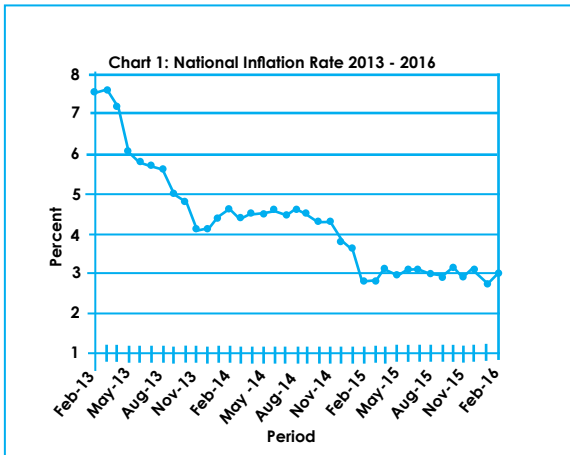
All-Tradable inflation rate was 1.4 percent in February, an increase of 0.6 of a percentage point on the January rate of 0.8 percent. The Imported Tradable inflation rate increased from -0.3 percent in January to 0.7 percent in February. The Non-Tradable inflation rate decreased from 7.3 percent to 7.0 percent between January and February. The Domestic Tradable inflation rate declined from 2.6 percent to 2.5 percent between the two periods.

The All-Tradable index moved from 188.1 in January to 188.0 in February registering a drop of 0.1 percent. The Domestic Tradable index increased from 209.9 in January to 210.8 in February, recording a rise of 0.4 percent. The Imported Tradable index went down by 0.3 percent moving from 176.9 to 176.3 between the two periods.

Section 2: **Core Inflation**

The Trimmed Mean Core Inflation rate registered a decline of 0.2 of a percentage point, moving from 2.8 percent to 2.6 percent. The Core Inflation rate by exclusion recorded a drop of 0.3 of a percentage point, moving from 4.0 percent to 3.7 percent, between January and February 2016.

Charts



A.N. Majelantle
Statistician General
15th March 2016

TABLES

TABLE 1: COST OF LIVING INDEX (September 2006 =100.0)

		Food	Alcohol & Tobacco	Clothing & Footwear	Housing	Furniture etc	Health	Transport	Com- muni- cation	Rec. & Culture	Edu- cation	Rest. & Ho- tels	Miscel- laneous
Weights		21.84	9.29	7.52	11.46	6.76	2.71	18.98	3.01	2.22	3.37	3.27	9.57
2013	Jan	185.2	216.9	148.0	148.8	164.0	146.8	170.0	91.7	132.6	148.4	204.6	129.2
	Feb	186.0	217.2	148.6	148.9	164.5	147.2	170.1	91.7	132.8	148.4	204.9	129.2
	Mar	187.1	222.1	149.1	149.5	165.2	147.4	170.4	91.7	133.0	148.4	205.6	129.3
	Apr	187.7	226.1	150.4	152.2	165.8	147.6	170.5	91.7	135.9	148.4	208.2	129.0
	May	188.3	226.7	151.5	152.2	166.3	147.8	170.7	91.7	136.0	148.4	210.1	129.3
	Jun	188.6	226.9	152.3	153.4	167.4	148.4	170.7	91.7	136.1	148.4	210.6	129.3
	Jul	188.8	227.2	152.9	153.5	167.9	148.7	171.2	91.7	136.3	148.4	210.8	129.6
	Aug	189.5	227.5	153.3	153.7	168.2	149.0	171.4	91.7	136.5	148.4	213.0	129.7
	Sept	190.2	228.0	153.8	154.5	169.1	149.1	171.4	92.0	137.1	148.4	213.8	129.8
	Oct	190.7	228.2	154.3	154.7	169.5	150.2	171.5	92.0	137.4	148.4	214.5	130.8
	Nov	191.2	229.2	155.3	154.8	170.8	150.4	172.1	92.0	138.4	148.4	215.8	131.0
	Dec	191.4	231.0	155.9	155.2	171.5	150.7	172.2	92.1	138.6	148.4	218.5	131.1
2014	Jan	191.9	234.8	156.9	155.4	171.8	157.4	173.2	92.1	139.1	159.4	221.9	131.6
	Feb	192.6	239.9	157.7	155.5	171.9	157.6	173.3	92.1	139.3	159.4	223.1	131.6
	Mar	193.1	243.3	158.5	156.5	173.8	157.8	172.2	92.1	139.6	159.4	224.2	131.7
	Apr	193.8	245.9	159.1	158.4	174.0	158.8	172.3	92.1	141.6	159.4	225.2	137.7
	May	194.3	247.5	160.0	158.5	174.4	159.0	172.3	92.1	141.8	159.4	226.2	137.8
	Jun	194.6	247.8	161.1	159.2	176.1	162.4	172.3	92.1	141.9	159.4	226.7	137.9
	Jul	194.9	248.1	161.9	159.2	176.3	162.5	172.5	92.1	142.0	159.4	227.4	137.9
	Aug	195.0	248.2	162.3	159.3	177.0	162.8	174.1	92.1	142.3	159.4	228.5	138.1
	Sept	195.3	248.3	163.1	159.7	178.1	163.1	174.2	92.1	142.7	159.4	229.0	138.2
	Oct	195.5	248.6	163.9	159.8	178.4	163.1	174.3	92.1	142.7	159.4	229.4	138.2
	Nov	196.0	248.7	165.0	159.9	179.1	163.4	175.2	92.1	143.1	159.4	229.9	138.9
	Dec	196.3	248.6	166.1	161.4	180.0	163.5	170.7	92.1	143.5	159.4	230.3	138.9
2015	Jan	196.3	254.2	167.2	161.5	182.0	167.6	171.2	92.1	143.5	169.5	232.0	139.2
	Feb	196.7	256.7	169.2	161.3	183.5	167.7	163.8	92.1	143.9	169.5	235.7	139.5
	Mar	196.7	259.4	170.4	162.3	184.7	167.8	164.0	92.1	144.1	169.5	236.8	139.6
	Apr	196.7	260.6	171.1	168.3	185.1	167.9	164.3	92.1	150.9	169.5	237.1	148.0
	May	196.8	261.3	172.1	168.1	185.6	171.9	164.3	92.6	151.3	169.5	237.7	148.0
	Jun	196.6	261.7	173.3	171.0	186.9	172.2	164.4	92.5	151.3	169.5	239.2	148.7
	Jul	196.8	262.1	174.0	171.1	187.1	172.6	164.6	92.5	151.5	169.5	239.6	148.7
	Aug	197.1	262.6	175.4	171.2	187.6	172.7	164.6	92.5	151.5	169.8	240.4	148.9
	Sept	197.4	260.8	176.5	175.3	188.9	173.0	162.8	92.5	151.7	169.8	241.2	149.0
	Oct	197.8	263.2	177.5	175.3	189.3	173.1	163.0	92.5	152.0	169.8	243.4	149.1
	Nov	197.7	263.7	178.2	175.1	189.2	173.2	162.9	92.5	152.1	169.8	244.0	149.1
	Dec	197.7	264.0	179.0	177.1	189.8	173.2	160.8	92.5	152.3	169.8	244.6	149.0
2016	Jan	198.6	264.1	180.4	177.2	190.0	173.3	160.9	92.5	152.8	175.7	245.3	149.7
	Feb	199.8	264.5	181.6	177.0	190.2	173.4	158.6	92.5	153.6	175.7	246.0	149.3
% Change on last month		0.6	0.1	0.7	(0.1)	0.1	0.1	(1.4)	0.0	0.6	0.0	0.3	(0.3)

TABLE 1: COST OF LIVING INDEX(Cont.)

		All Items Index	National Inflation Rate	Monthly Change	Towns & Cities Index	Urban Villages Index	Rural Villages Index	Towns & Cities	Annual Inflation Urban Villages	Rural Villages
		100	%	%	47.33	33.76	18.91	%	%	%
2013	Jan	165.9	7.5	0.6	165.0	164.8	170	7.5	7.0	8.3
	Feb	166.2	7.5	0.2	165.2	165.0	170.7	7.5	6.9	8.3
	Mar	167.1	7.6	0.6	166.0	166.2	171.8	7.5	7.2	8.3
	Apr	168.2	7.2	0.6	167.3	167.4	172.1	7.3	6.9	7.7
	May	168.7	6.1	0.3	168.0	167.5	172.5	5.9	5.9	6.9
	Jun	169.1	5.8	0.2	168.1	168.1	173.3	5.5	5.8	6.6
	Jul	169.4	5.7	0.2	168.5	168.3	173.5	5.5	5.5	6.4
	Aug	169.8	5.6	0.2	168.8	168.7	174.0	5.5	5.3	6.4
	Sept	170.2	5.0	0.3	169.1	169.2	174.7	4.5	5.0	6.4
	Oct	170.6	4.8	0.2	169.4	169.6	175.4	4.2	4.9	6.1
	Nov	171.2	4.1	0.3	169.9	170.0	176.4	3.5	4.3	5.5
	Dec	171.7	4.1	0.3	170.2	170.5	177.3	3.6	4.0	5.3
2014	Jan	173.1	4.4	0.9	171.7	172.2	178.6	4.0	4.5	5.0
	Feb	173.9	4.6	0.4	172.6	172.7	179.4	4.5	4.7	5.1
	Mar	174.5	4.4	0.3	173.2	173.4	179.6	4.4	4.3	4.6
	Apr	175.9	4.5	0.8	174.7	174.5	181.2	4.4	4.3	5.3
	May	176.3	4.5	0.2	174.9	175.2	181.5	4.2	4.6	5.2
	Jun	176.8	4.6	0.3	175.5	175.6	182.1	4.4	4.5	5.1
	Jul	177.0	4.5	0.1	175.8	175.9	182.1	4.3	4.5	5.0
	Aug	177.5	4.6	0.3	176.3	176.3	182.7	4.5	4.5	5.0
	Sept	177.8	4.5	0.2	176.4	176.6	183.5	4.3	4.4	5.0
	Oct	178.0	4.3	0.1	176.6	176.7	183.8	4.2	4.2	4.8
	Nov	178.5	4.3	0.3	177.2	177.2	184.3	4.3	4.3	4.5
	Dec	178.1	3.8	(0.3)	176.7	177.0	183.7	3.8	3.8	3.6
2015	Jan	179.5	3.6	0.8	177.9	178.5	185.3	3.6	3.7	3.7
	Feb	178.8	2.8	(0.4)	177.1	177.7	185.1	2.6	2.9	3.2
	Mar	179.4	2.8	0.4	177.5	178.3	186.0	2.5	2.8	3.6
	Apr	181.3	3.1	1.1	180.0	179.7	187.4	3.1	3.0	3.4
	May	181.6	3.0	0.2	180.2	180.1	188.1	3.0	2.8	3.6
	Jun	182.3	3.1	0.4	180.9	180.8	188.2	3.1	3.0	3.4
	Jul	182.5	3.1	0.1	181.1	181.1	188.5	3.1	3.0	3.5
	Aug	182.8	3.0	0.2	181.3	181.6	188.9	2.8	3.0	3.4
	Sept	183.1	2.9	0.1	181.5	181.6	189.5	2.9	2.8	3.3
	Oct	183.6	3.1	0.3	182.3	182.1	189.5	3.2	3.0	3.1
	Nov	183.7	2.9	0.0	182.4	182.0	189.8	2.9	2.7	3.0
	Dec	183.6	3.1	(0.0)	182.3	182.0	189.9	3.2	2.8	3.4
2016	Jan	184.3	2.7	0.4	182.7	183.1	190.5	2.7	2.6	2.8
	Feb	184.2	3.0	(0.0)	182.3	183.3	190.9	2.9	3.2	3.1
% Change on last month		(0.0)			(0.2)	0.1	0.2			

TABLE 2 :National Cost-of-Living Group and Section Indices

(September 2006=100.0)

Group Section	Weights	This month Feb 2016	Last month Jan 2015	3 months ago Nov 2015	6 months ago Aug 2015	12 months ago Feb 2015	Percentage Change on			
							Last month	3 months ago	6 months ago	12 months ago
1 Food & Non-Alcoholic Beverages	21.84	199.8	198.6	197.7	197.1	196.7	0.6	1.0	1.3	1.5
1.1 Bread & Cereals	6.51	187.4	187.2	187.8	187.3	188.3	0.1	(0.2)	0.1	(0.5)
1.2 Meat (Fresh, Chilled & Frozen)	3.15	206.6	206.4	205.3	206.0	204.6	0.1	0.6	0.3	1.0
1.3 Fish (Fresh, Chilled & Frozen)	0.20	214.5	213.3	213.8	213.0	205.3	0.5	0.3	0.7	4.5
1.4 Milk, Cheese & Milk Products	2.19	204.2	204.2	203.7	203.0	203.5	(0.0)	0.2	0.6	0.3
1.5 Oils & Fats	0.90	228.5	228.3	228.9	228.9	231.7	0.1	(0.2)	(0.2)	(1.4)
1.6 Fruit	0.67	150.3	149.7	145.1	144.4	150.4	0.4	3.5	4.1	(0.1)
1.7 Vegetables	1.94	217.4	207.4	200.7	199.1	202.8	4.8	8.3	9.2	7.2
1.8 Sugar, Jam, Honey, Chocolate & Confectionery	1.36	209.9	209.2	209.1	207.3	200.9	0.4	0.4	1.3	4.5
1.9 Food not else where Classified	2.36	201.7	201.4	200.9	200.7	195.7	0.1	0.4	0.5	3.1
1.10 Coffee, Tea & Cocoa	0.63	228.6	227.0	225.0	222.2	220.3	0.7	1.6	2.9	3.8
1.11 Mineral Waters, Soft Drinks, Fruits & Veg. Juices	1.94	191.0	190.7	190.5	189.7	188.3	0.1	0.2	0.7	1.4
2 Alcoholic Beverages, Tobacco & Narcotics	9.29	264.5	264.1	263.7	262.6	256.7	0.1	0.3	0.7	3.1
2.1 Alcoholic Beverages	8.09	260.4	260.1	259.7	258.5	254.3	0.1	0.3	0.7	2.4
2.2 Tobacco	1.20	292.6	291.5	290.9	290.3	272.5	0.4	0.6	0.8	7.4
3 Clothing and Footwear	7.52	181.6	180.4	178.2	175.4	169.2	0.7	1.9	3.6	7.4
3.1 Clothing	3.33	212.9	211.1	208.3	204.6	196.4	0.9	2.2	4.1	8.4
3.2 Other articles of Clothing	1.82	156.8	156.2	155.3	154.4	150.1	0.4	0.9	1.6	4.5
3.3 Cleaning, Repair & Hire	0.03	220.5	218.5	214.3	211.1	203.2	0.9	2.9	4.4	8.5
3.4 Footwear	2.34	155.9	155.0	152.7	149.7	144.8	0.6	2.1	4.2	7.6
4 Housing, Water, Electr. Gas & Other Fuels	11.46	177.0	177.2	175.1	171.2	161.3	(0.1)	1.1	3.3	9.7
4.1 Rent paid by Tenants	5.68	162.2	162.2	157.7	150.0	141.7	0.0	2.8	8.1	14.5
4.2 Materials for Maintenance & Repair of dwellings	2.57	153.4	153.3	152.8	153.5	153.3	0.0	0.4	(0.0)	0.1
4.3 Water Supply & Misc. Services	1.14	203.1	203.1	202.8	202.8	160.9	0.0	0.1	0.1	26.2
4.4 Electricity Gas and other Fuels	2.06	232.6	234.0	235.3	234.4	225.6	(0.6)	(1.1)	(0.8)	3.1
5 Furnishing, H/H Equipment & Routine Maintenance	6.76	190.2	190.0	189.2	187.6	183.5	0.1	0.5	1.4	3.6
5.1 Furniture & Furnishing	2.31	170.4	169.4	168.0	166.8	164.0	0.6	1.5	2.1	3.9
5.2 Carpets & Other Floor Coverings	0.04	183.5	181.2	179.3	173.0	170.8	1.3	2.4	6.1	7.4
5.3 Household Textiles	0.44	174.8	174.2	173.6	172.5	168.7	0.4	0.7	1.4	3.6
5.4 Household Appliances	0.69	163.7	162.9	161.9	159.7	155.3	0.5	1.1	2.5	5.4
5.5 Glassware, Tableware & Household Utensils	0.44	198.5	197.2	195.5	192.6	190.2	0.6	1.5	3.1	4.3
5.6 Small Tools, Miscellaneous Accessories	0.06	187.3	187.2	186.5	184.4	183.4	0.1	0.5	1.6	2.1
5.7 Goods & Services for H/hold Maintenance	2.79	214.3	215.2	215.2	213.6	208.1	(0.4)	(0.4)	0.4	3.0

TABLE 2 :National Cost-of-Living Group and Section Indices (September 2006=100.0) cont...

Group Section	Weights	This month Feb 2016	Last month Jan 2015	3 months ago Nov 2015	6 months ago Aug 2015	12 months ago Feb 2015	Percentage Change on			
							Last month	3 months ago	6 months ago	12 months ago
6 Health	2.71	173.4	173.3	173.2	172.7	167.7	0.1	0.1	0.4	3.4
6.1 Medical Products, App. & Equip.	0.35	222.6	220.8	220.0	217.0	211.8	0.8	1.2	2.6	5.1
6.2 Out-patient Services	0.66	185.9	186.3	186.2	186.1	184.9	(0.2)	(0.2)	(0.1)	0.5
6.3 Hospital Services	1.71	158.5	158.5	158.5	158.5	152.1	0.0	0.0	0.0	4.2
7 Transport	18.98	158.6	160.9	162.9	164.6	163.8	(1.4)	(2.7)	(3.7)	(3.2)
7.1 Purchase of Vehicles	5.89	152.2	155.7	158.9	159.3	158.7	(2.3)	(4.2)	(4.5)	(4.1)
7.2 Operation of Personal Transport	10.92	158.2	160.2	162.1	164.9	163.8	(1.3)	(2.4)	(4.1)	(3.4)
7.3 Transport Services	2.17	178.2	178.2	177.8	177.8	177.8	0.0	0.2	0.2	0.2
8 Communication	3.01	92.5	92.5	92.5	92.5	92.1	0.0	0.0	0.0	0.5
8.1 Postal Services	0.04	261.2	261.2	261.2	261.2	226.1	0.0	0.0	0.0	15.5
8.2 Telephone & Telefax Equipment	0.74	66.6	66.6	66.6	66.6	66.6	0.0	0.0	0.0	0.0
8.3 Telephone & Telefax Services	2.23	98.1	98.1	98.1	98.1	98.2	0.0	0.0	0.0	(0.1)
9 Recreation & Culture	2.22	153.6	152.8	152.1	151.5	143.9	0.6	1.0	1.4	6.8
9.1 Audio Visual, Photographic & Info. Proce. Equip.	1.09	116.1	115.8	115.1	114.6	112.0	0.2	0.9	1.3	3.6
9.2 Other Recreational Items & Equip.	0.18	189.1	181.3	180.2	176.4	174.3	4.3	4.9	7.2	8.5
9.3 Recreational & Cultural Services	0.76	178.4	178.4	178.1	178.1	161.9	0.0	0.2	0.2	10.2
9.4 Newspapers, Books & Stationary	0.19	233.5	232.1	231.4	230.5	223.3	0.6	0.9	1.3	4.5
10 Education	3.37	175.7	175.7	169.8	169.8	169.5	0.0	3.5	3.5	3.7
10.1 Pre-Primary & Primary Education	1.10	233.6	233.6	226.7	226.7	225.7	0.0	3.0	3.0	3.5
10.2 Secondary & Tertiary Education	2.26	147.5	147.5	142.1	142.1	142.1	0.0	3.8	3.8	3.8
11 Restaurants & Hotels	3.27	246.0	245.3	244.0	240.4	235.7	0.3	0.8	2.3	4.4
11.1 Restaurants, Cafes and the Like	3.08	250.1	249.4	248.1	244.4	239.7	0.3	0.8	2.3	4.3
11.2 Accommodation Services	0.19	179.1	178.7	176.3	174.8	170.6	0.2	1.6	2.5	5.0
12 Miscellaneous Goods & Services	9.57	149.3	149.7	149.1	148.9	139.5	(0.3)	0.1	0.2	7.0
12.1 Personal Care	0.66	166.7	165.9	166.5	165.8	164.1	0.5	0.1	0.6	1.6
12.2 Personal Effects N.E.C.	0.04	157.5	157.2	156.6	151.1	148.4	0.2	0.6	4.2	6.2
12.3 Social Protection	0.14	258.3	258.3	214.9	214.9	207.6	0.0	20.2	20.2	24.4
12.4 Insurance	6.32	149.9	151.0	151.0	151.0	138.2	(0.8)	(0.8)	(0.7)	8.5
12.5 Financial Services	0.18	161.2	160.7	160.6	157.3	154.3	0.3	0.3	2.5	4.4
12.6 Taxes Licences, Fees	2.24	134.5	133.4	133.3	133.3	130.2	0.8	0.9	0.9	3.3
All-Items Index	100.0	184.2	184.3	183.7	182.8	178.8	(0.0)	0.3	0.8	3.0

TABLE 3: COST-OF-LIVING INDEX BY TRADABILITY (September 2006 = 100.0)

		All Items		Non-Tradable		Domestic Tradable		Imported Tradable		All Tradable	
		Index	Inflation	Index	Inflation	Index	Inflation	Index	Inflation	Index	Inflation
Weights		100.00		30.92		23.91		45.17		69.08	
2013	Jan	165.9	7.5	148.4	5.2	185.6	9.5	167.1	7.6	173.4	8.3
	Feb	166.2	7.5	148.5	5.3	186.0	9.2	167.5	7.6	173.8	8.2
	Mar	167.1	7.6	148.8	5.3	188.4	9.4	168.1	7.7	175.0	8.4
	Apr	168.2	7.2	150.1	5.4	190.9	8.4	168.4	7.5	176.0	7.9
	May	168.7	6.1	150.4	4.3	191.4	7.5	168.9	6.3	176.5	6.8
	Jun	169.1	5.8	151.1	4.2	191.1	6.9	169.5	6.2	176.8	6.5
	Jul	169.4	5.7	151.2	4.1	191.1	6.8	170.1	6.0	177.2	6.3
	Aug	169.8	5.6	151.4	4.0	191.4	6.8	170.5	5.8	177.6	6.2
	Sept	170.2	5.0	151.8	3.9	191.9	6.6	171.0	4.7	178.1	5.5
	Oct	170.6	4.8	152.3	4.1	192.1	5.8	171.4	4.5	178.5	5.0
	Nov	171.6	4.1	152.8	4.1	192.9	5.0	171.9	3.6	179.1	4.1
	Dec	171.7	4.1	153.3	4.1	193.3	4.8	172.4	3.7	179.5	4.1
2014	Jan	173.1	4.4	154.9	4.4	196.4	5.8	173.1	3.6	181.0	4.4
	Feb	173.9	4.6	155.1	4.5	198.9	6.9	173.4	3.5	182.1	4.8
	Mar	174.5	4.4	155.9	4.7	199.7	6.0	173.7	3.3	182.5	4.3
	Apr	175.9	4.5	158.7	5.7	200.6	5.1	174.2	3.4	183.2	4.1
	May	176.3	4.5	158.9	5.6	201.2	5.1	174.8	3.5	183.8	4.1
	Jun	176.8	4.6	159.8	5.8	201.5	5.4	175.2	3.4	184.1	4.1
	Jul	177.0	4.5	159.8	5.7	201.7	5.5	175.5	3.2	184.4	4.1
	Aug	177.5	4.6	160.1	5.8	201.8	5.4	176.3	3.4	185.0	4.1
	Sept	177.8	4.5	160.6	5.8	201.6	5.1	176.7	3.3	185.3	4.0
	Oct	178.0	4.3	160.6	5.5	201.7	5.0	177.0	3.3	185.5	3.9
	Nov	178.5	4.3	160.9	5.3	201.7	4.6	178.0	3.5	186.2	4.0
	Dec	178.1	3.8	161.6	5.4	201.7	4.3	176.6	2.4	185.2	3.1
2015	Jan	179.5	3.6	162.5	4.9	204.7	4.2	177.4	2.5	186.7	3.1
	Feb	178.8	2.8	163.0	5.1	205.6	3.4	175.0	0.9	185.4	1.9
	Mar	179.4	2.8	163.6	4.9	206.9	3.6	175.3	1.0	186.1	1.9
	Apr	181.3	3.1	168.4	6.1	207.6	3.5	175.9	0.9	186.7	1.9
	May	181.6	3.0	168.9	6.3	207.7	3.2	176.1	0.8	186.9	1.7
	Jun	182.3	3.1	170.7	6.9	207.6	3.0	176.3	0.6	187.0	1.5
	Jul	182.5	3.1	170.9	6.9	207.5	2.9	176.8	0.7	187.3	1.5
	Aug	182.8	3.0	171.0	6.8	207.7	2.9	177.3	0.6	187.7	1.4
	Sept	183.1	2.9	172.5	7.4	207.0	2.7	177.0	0.2	187.2	1.1
	Oct	183.6	3.1	172.7	7.5	208.3	3.3	177.4	0.2	187.6	1.1
	Nov	183.7	2.9	172.8	7.4	208.6	3.4	177.3	-0.4	188.0	1.0
	Dec	183.6	3.1	173.8	7.6	208.7	3.5	176.5	0.0	187.5	1.2
2016	Jan	184.3	2.7	174.4	7.3	209.9	2.6	176.9	-0.3	188.1	0.8
	Feb	184.2	3.0	174.5	7.0	210.8	2.5	176.3	0.7	188.0	1.4
% Change on last month		(0.0)		0.0		0.4		(0.3)		(0.1)	

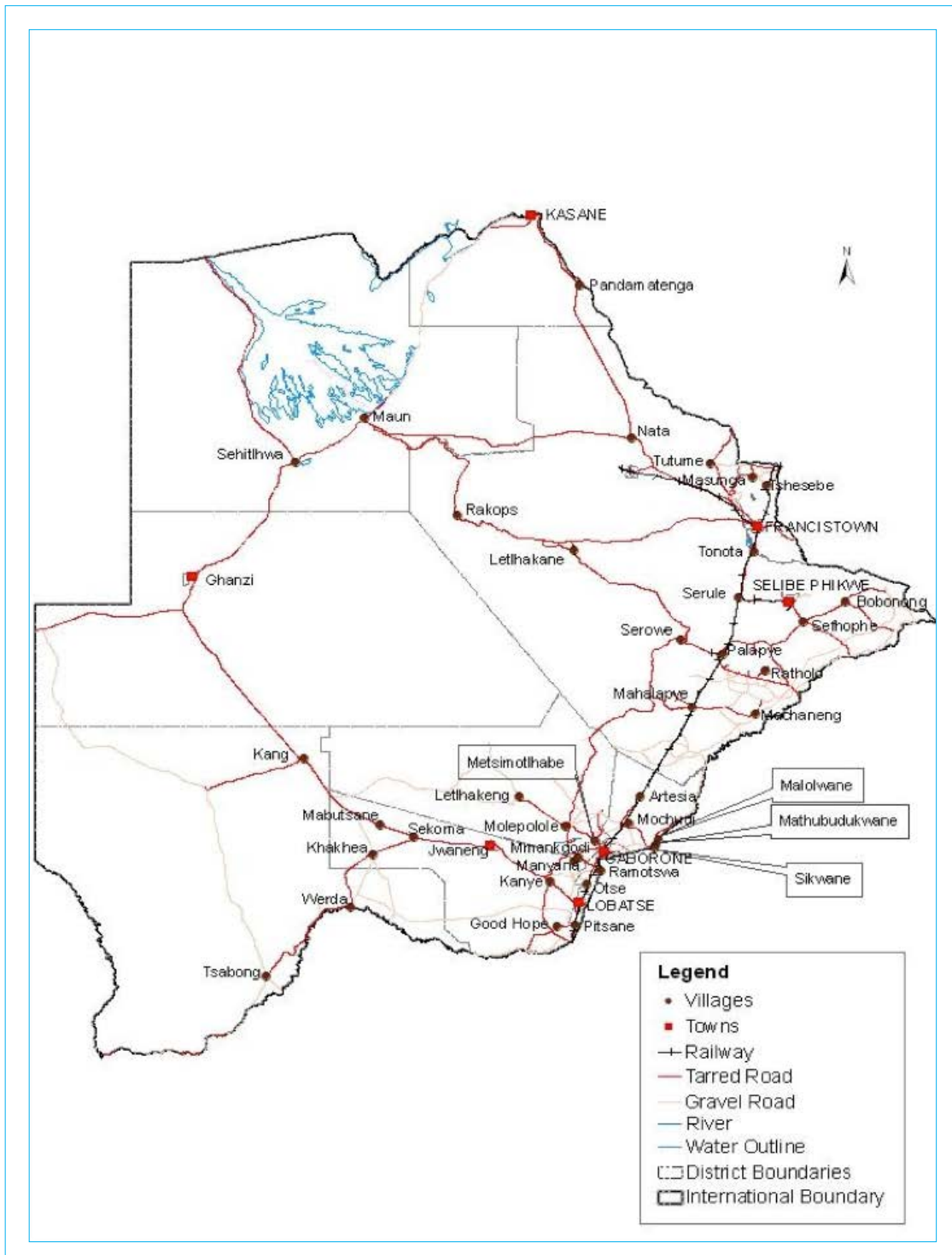
TABLE 4: Core Inflation Rates by Exclusion and Trimmed Mean

Year	Month	Consumer Price Index (Trimmed Mean) (September 2006 = 100)	Core Monthly Inflation Rate (Trimmed Mean) (percentage)	Consumer Price Index (Excluding Administered Prices) (September 2006 = 100)	Core Monthly Inflation (Excluding Administered Prices) (percentage)
2013					
	Jan	166.8	7.2	166.8	6.9
	Feb	167.2	7.2	167.2	6.9
	Mar	168.3	7.3	168.4	7.0
	Apr	172.2	6.8	169.4	6.4
	May	166.9	6.0	170.0	6.1
	Jun	168.4	5.7	170.3	5.7
	Jul	168.7	5.5	170.7	5.5
	Aug	169.1	5.4	171.1	5.3
	Sept	169.8	4.7	171.7	5.2
	Oct	171.5	4.7	172.2	4.9
	Nov	176.1	4.0	172.9	4.7
	Dec	174.8	4.0	173.5	4.7
2014					
	Jan	173.9	4.1	175.4	5.2
	Feb	173.4	4.1	176.3	5.5
	Mar	175.1	4.0	177.1	5.2
	Apr	175.0	4.1	178.2	5.2
	May	175.4	4.1	178.8	5.2
	Jun	177.8	4.2	179.4	5.3
	Jul	178.0	4.2	179.7	5.3
	Aug	177.6	4.2	180.3	5.3
	Sept	177.8	4.1	180.7	5.2
	Oct	179.0	4.0	180.9	5.1
	Nov	179.6	3.9	181.5	5.0
	Dec	176.6	3.7	182.0	4.9
2015					
	Jan	178.5	3.6	183.7	4.8
	Feb	178.6	3.2	184.8	4.8
	Mar	179.2	3.3	185.6	4.8
	Apr	184.1	3.6	186.7	4.8
	May	184.4	3.5	187.1	4.7
	Jun	185.1	3.6	187.9	4.7
	Jul	185.4	3.6	188.2	4.7
	Aug	185.8	3.5	188.6	4.6
	Sept	186.5	3.4	189.3	4.8
	Oct	187.1	3.6	189.9	5.0
	Nov	187.1	3.3	190.0	4.7
	Dec	187.0	3.2	190.3	4.5
2016					
	Jan	187.8	2.8	191.1	4.0
	Feb	188.2	2.6	191.6	3.7

Table 5: Average Annual Inflation (September 2006=100)

	Group	Weights	YEAR							
			2008	2009	2010	2011	2012	2013	2014	2015
1	Food & Non-Alcoholic Beverages	21.84	20.2	14.7	3.6	6.9	8.0	5.4	3.0	1.3
2	Alcoholic Beverages,Tobacco & Narcotics	9.29	13.2	35.2	7.1	8.4	7.6	10.3	9.0	6.1
3	Clothing and Footwear	7.52	2.0	8.4	8.0	8.9	7.5	6.3	6.0	7.6
4	Housing, Water, Electr. Gas & Other Fuels	11.46	8.1	4.8	6.4	8.4	7.7	4.3	3.9	7.1
5	Furnishing, H/H Equipment& Routine Maintenance	6.76	6.0	11.9	9.4	9.0	7.3	4.9	5.0	6.1
6	Health	2.71	11.3	5.5	2.7	4.5	5.9	5.5	8.3	6.3
7	Transport	18.98	21.2	(8.4)	12.1	13.2	10.8	7.3	1.2	(5.1)
8	Communication	3.01	(0.3)	(0.3)	1.2	(3.0)	(1.4)	0.3	0.3	0.3
9	Recreation & Culture	2.22	2.3	5.0	6.0	8.3	5.8	4.5	4.2	5.7
10	Education	3.37	3.9	3.9	5.8	10.6	6.4	4.7	7.4	6.4
11	Restaurants & Hotels	3.27	12.7	18.8	9.0	9.3	8.4	7.9	7.6	5.5
12	Miscellaneous Goods & Services	9.57	4.9	3.8	7.0	5.3	2.0	1.2	5.2	7.2
	All-Items Index	100.0	12.6	8.2	6.9	8.5	7.5	5.9	4.4	3.1

PRICES COLLECTION COVERAGE FOR BOTSWANA CONSUMER PRICE INDEX (CPI)- 2016



Glossary

Consumer Price Index (CPI) is an index which measures price changes in goods and services with reference to a base period.

Inflation is a measurement of prices movement of goods and services in a particular country.

Domestic Tradable refers to the goods and services which a country (Botswana) can export to other countries.

Imported Tradable represents the goods and services which a country (Botswana) imports from other countries (trading partners).

Non-Tradable refers to the goods and services which a country cannot either export or import to other countries.

All –Tradable refers to the total of **Domestic** and **Imported tradable**.

Trimmed Mean Core Inflation- attempts to remove 8 percent (by weight) of the commodity sub-groups with the largest price changes at each of the ends of an ordered series of price changes in any given month.

Core inflation by Exclusion is a measure used to remove the volatility inherent in prices that are only adjusted periodically and not always in response to currently prevailing market forces.