

Statistics Botswana
Private Bag 0024, Gaborone, Botswana
Tel: (267) 3671300, Fax (267) 3952201,
Email: csobots@gov.bw, Website: www.cso.gov.bw

All correspondence should be addressed to Statistician General

CONSUMER PRICE STATISTICS – FEBRUARY 2012

CONTENTS

COMMENTARY

- 1. Section 1: Headline Inflation**
- 2. Section 2: Core Inflation**

CHARTS

- 1. National Rates of Inflation, January 2009 – February 2012**
- 2. Monthly Changes in the Cost-of-Living Index, January 2009 – February 2012**
- 3. Non-Tradeables Inflation Rates, January 2009 – February 2012**
- 4. Tradeables Inflation Rates, January 2009 - February 2012**

TABLES

- 1. Cost-of-Living Index Series (January 2009 – February 2012)**
- 2. National Cost-of-Living Group and Section Indices**
- 3. Cost-of-Living Index by Tradeability (January 2009 – February 2012)**
- 4. Core Inflation Rates**

CONTACT STATISTICIAN: *PHALADI LABOBEDI*

PRICE STATISTICS UNIT, TEL: *3671300*, EXT: *1360/61/77/97*

EMAIL: plabobedi@gov.bw

“Figures that inform and help you make decisions”

COMMENTARY-FEBRUARY 2012 CONSUMER PRICE INDEX (CPI)

Section 1: Headline Inflation

The annual rate of inflation declined to 8.2 percent in February, down by 0.6 of a percentage point from 8.8 percent in January. The towns and cities' inflation rate registered a drop of 0.6 of a percentage point, from 8.6 percent in January to 8.0 percent in February. The urban villages' inflation rate went down from 9.2 percent in January to 8.6 percent in February, a decrease of 0.6 of a percentage point. The rural villages' inflation rate stood at 8.3 percent in February, down by 0.3 of a percentage point on the January 2011 rate of 8.6 percent.

The February national Consumer Price Index was 154.7, up by 0.2 percent on the January index of 154.3. The rural villages' index moved from 157.0 to 157.6 between January and February, registering an increase of 0.4 percent. The cities and towns' index went up by 0.2 percent, from 153.5 in January to 153.7 in February. The urban villages' index went up from 154.0 in January to 154.4 in February, recording an increase of 0.2 percent.

All group indices showed stable movement with changes of less than one percent between January and February.

The *Food & Non Alcoholic Beverages* group index moved from 172.3 to 173.3, registering an increase of 0.6 percent between January and February 2012. The rise was due to a general increase in the food prices, notably, *Bread & Cereals (1.3 percent)*, *Oils & Fats (0.9 percent)*, *Fish (0.8 percent)* and *Milk Cheese & Milk Products (0.5 percent)*.

The *Clothing and Footwear* group index recorded an increase of 0.4 percent from 139.6 in January to 140.2 in February. All constituent section indices recorded increases, specifically, *Other Articles of Clothing (0.9 percent)*, *Cleaning, Repair & Hire (0.5 percent)* and *Clothing (0.4 percent)* and *Footwear (0.2 percent)*,

The *Health* group index moved from 136.5 to 136.9, registering an increase of 0.3 percent between January and February. The rise was attributed to an increase in the constituent section indices of *Medical Products, Appliances & Equipments (1.4 percent)* and *Out-patient Services (0.3 percent)*.

The *Furnishing, Household Equipment & Routine Maintenance* group index registered an increase of 0.2 percent, from 155.6 in January to 155.9 in February. This was a result of a general increase in the prices of the constituent sections of *Furnishing, Household Equipment & Routine Maintenance*.

The *All-Tradeables* inflation rate registered a drop of 0.8 of a percentage point, from 9.9 to 9.1 percent between January and February. The *Imported Tradeables* inflation rate recorded a decrease of 1.3 percentage points over the period, from 11.5 to 10.2 percent. The *Domestic Tradeables* inflation rate went up by 0.1 of a percentage point, from 7.2 percent in January to 7.3 percent in February, while the *Non-Tradeables* inflation rate dropped by 0.1 of a percentage point, from 6.2 percent in January to 6.1 percent in February.

The *All-Tradeables* index moved from 160.0 in January to 160.6 in February, an increase of 0.3 percent. The *Domestic Tradeables* index rose by 0.5 percent, from 169.6 in January to 170.4 in February. The *Imported Tradeables* index went up by 0.3 percent, from 155.3 to 155.7 between the two months.

Section 2: Core Inflation

The Trimmed Mean Core Inflation rate stood at 7.8 percent in February, a drop of 0.3 of a percentage point from 8.1 percent in January. The Core Inflation rate by exclusion for February remained unchanged at 7.2 percent.

Chart 1: National Inflation Rate 2009 - 2012

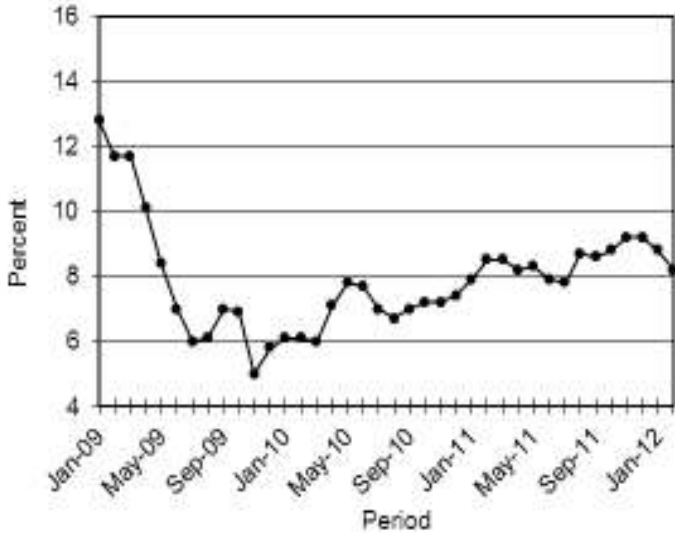


Chart 2: Monthly Changes in Cost-of-Living Index 2009 - 2012

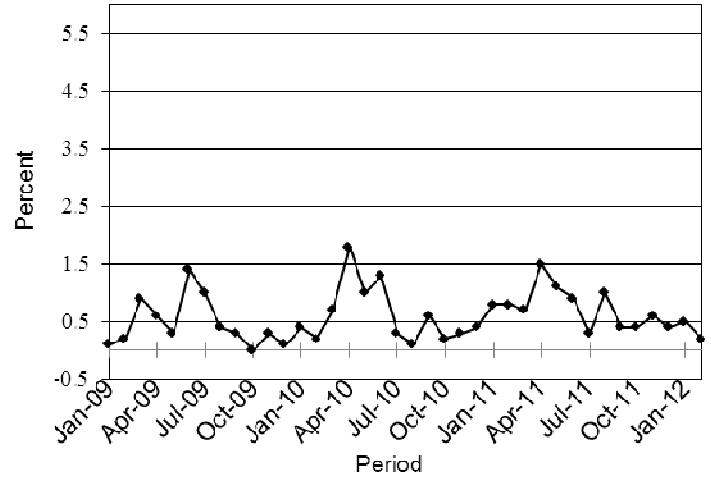


Chart 3: Non-Tradeable Inflation 2009 - 2012

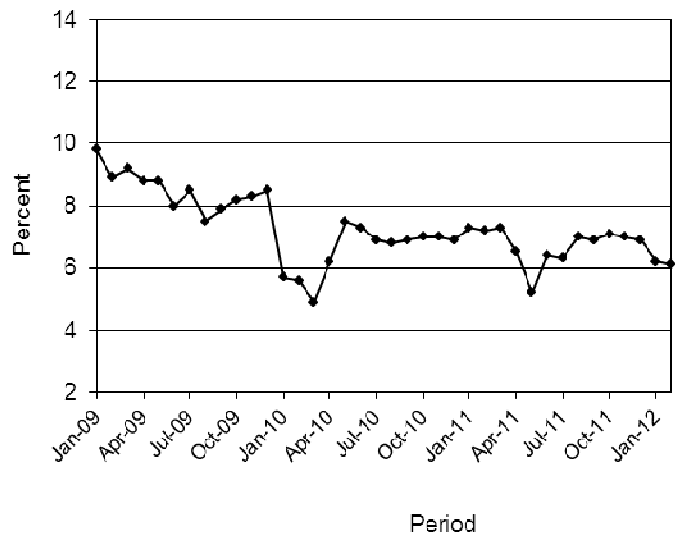
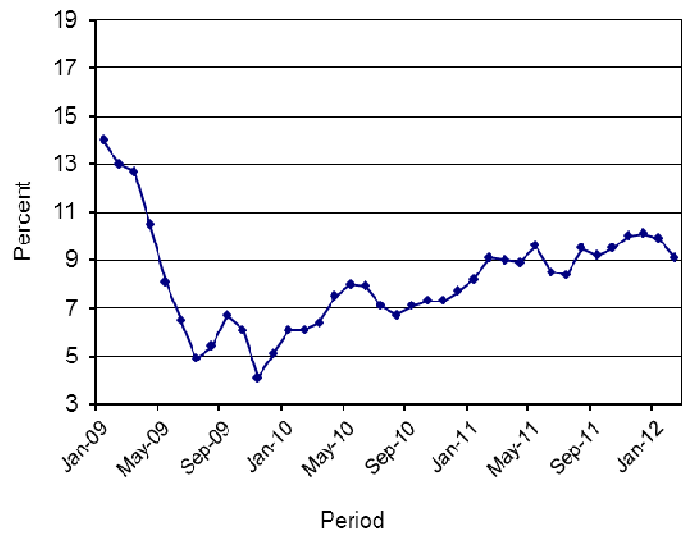


Chart 4 Tradeables Inflation 2009 - 2012



A.N. Majelantle
Acting Statistician General
15th March 2012

TABLE 1: COST OF LIVING INDEX (September 2006 =100.0)

		Food	Alcohol and Tobacco	Clothing and Footwear	Housing	Furni- ture etc	Health	Trans- port	Commun ication	Rec. & Culture	Educati on	Rest. & Hotels	Other
Weights		21.84	9.29	7.52	11.46	6.76	2.71	18.98	3.01	2.22	3.37	3.27	9.57
(1)	(2)	(3)	(4)	(5)	(6)	(7)	(8)	(9)	(10)	(11)	(12)	(13)	(14)
2009	Jan	145.8	159.7	108.7	114.8	118.2	123.3	107.5	94.7	103.8	113.7	143.5	108.8
	Feb	146.2	161.0	108.6	114.7	118.2	123.2	107.6	94.7	103.6	113.8	145.1	108.9
	Mar	148.2	162.2	109.6	116.5	120.1	123.3	107.9	94.7	103.6	113.8	147.9	108.8
	Apr	148.8	163.2	110.8	116.4	122.7	123.7	108.4	94.7	105.0	113.8	148.8	110.4
	May	149.2	163.4	111.8	116.4	123.7	123.8	108.8	94.6	106.6	113.8	150.4	110.4
	Jun	149.4	163.7	112.5	117.6	125.6	123.9	115.2	94.6	107.1	113.8	153.1	111.5
	July	151.5	164.6	115.5	118.1	127.4	124.2	115.5	94.6	108.8	113.8	154.2	112.9
	Aug	151.7	164.5	115.8	118.1	127.4	124.3	117.6	94.6	109.1	113.8	154.7	113.1
	Sept	151.7	164.7	116.1	120.0	127.8	124.3	118.1	94.6	109.2	113.8	154.5	113.2
	Oct	151.6	164.9	116.1	119.9	128.1	124.3	118.3	94.6	109.2	113.8	153.9	113.2
	Nov	151.9	165.8	117.0	119.9	129.0	124.8	118.6	94.7	109.5	113.8	155.2	113.3
	Dec	151.0	166.0	116.6	120.3	129.9	125.0	119.6	94.6	109.6	113.8	155.3	113.6
2010	Jan	151.1	165.8	116.9	119.9	130.6	124.9	120.6	94.6	109.9	120.4	155.6	114.4
	Feb	151.1	166.0	117.3	120.0	131.2	125.2	121.0	94.6	110.3	120.4	156.5	114.6
	Mar	152.4	167.6	118.9	121.2	133.1	125.4	121.2	94.6	110.8	120.4	158.3	115.0
	Apr	154.4	174.1	119.9	121.8	134.3	127.3	123.4	95.4	111.1	120.4	162.7	119.5
	May	156.0	176.7	120.5	126.3	135.0	127.6	123.6	95.4	111.4	120.5	164.4	119.7
	Jun	156.1	177.4	121.4	126.8	137.1	127.8	130.2	96.4	111.5	120.5	165.9	120.8
	July	156.4	177.4	122.9	127.3	138.0	128.1	130.3	96.4	115.6	120.5	166.6	121.0
	Aug	156.8	177.6	123.6	127.5	138.5	128.2	129.6	96.4	115.8	120.5	167.5	121.1
	Sept	156.7	179.1	125.0	127.7	139.3	128.3	131.6	96.4	116.1	120.5	168.8	121.4
	Oct	156.7	179.7	126.3	127.9	139.6	128.4	131.7	96.4	116.5	120.5	170.6	121.5
	Nov	157.2	180.4	127.4	128.1	140.4	128.4	131.8	96.4	116.7	120.5	171.8	121.5
	Dec	157.6	182.1	127.1	128.8	141.7	128.6	132.2	96.4	116.9	120.5	171.9	121.7
2011	Jan	158.2	183.4	127.5	129.1	142.3	128.7	133.7	96.4	117.1	133.2	172.7	122.6
	Feb	159.1	183.9	127.9	129.4	142.9	128.8	137.5	96.4	117.6	133.2	172.9	122.6
	Mar	160.5	186.0	128.5	130.9	144.6	129.1	137.7	96.4	118.5	133.2	173.7	122.8
	Apr	164.4	188.5	131.0	131.1	145.3	133.0	139.0	96.4	123.4	133.2	175.5	125.7
	May	165.8	191.3	132.1	131.8	146.7	133.3	142.8	91.2	124.1	133.2	179.3	126.1
	Jun	166.6	191.9	133.1	137.6	148.9	133.6	143.3	91.2	124.4	133.2	182.5	126.6
	Jul	167.0	192.2	134.4	138.2	149.5	133.6	143.4	91.2	124.5	133.2	183.4	126.7
	Aug	167.9	192.4	135.1	138.9	150.4	133.7	148.7	91.2	124.7	133.2	183.7	126.8
	Sept	168.8	192.4	135.8	140.0	152.9	133.9	148.8	91.2	124.8	133.2	184.5	126.9
	Oct	169.8	192.8	136.4	140.6	153.9	136.0	149.4	91.2	125.3	133.2	184.6	127.1
	Nov	170.7	192.9	137.2	141.2	154.3	136.1	152.6	91.2	125.3	133.2	185.3	127.2
	Dec	171.8	192.8	138.8	141.8	155.2	136.4	152.6	91.2	125.4	133.2	186.0	127.2
2012	Jan	172.3	193.5	139.6	141.9	155.6	136.5	153.4	91.2	125.6	141.5	187.1	127.7
	Feb	173.3	193.6	140.2	142.0	155.9	136.9	153.5	91.2	125.7	141.5	187.5	127.7
% Change on Last month		0.6	0.1	0.4	0.1	0.2	0.3	0.1	0.0	0.1	0.0	0.2	0.0

TABLE 1: COST OF LIVING INDEX(Cont.)

		All Items Index	National Inflation Rate	Monthly Change	Towns & Cities Index	Urban Village Index	Rural Villages Index	Annual Inflation		
			%	%	47.33	33.76	18.91	Towns & Cities %	Urban Villages %	Rural %
2009	Jan	123.8	12.8	0.1	121.6	123.9	129.3	11.5	12.5	16.3
	Feb	124.1	11.7	0.2	122.0	124.1	129.4	10.5	11.9	14.7
	Mar	125.2	11.7	0.9	123.0	125.2	130.6	10.3	12.2	14.9
	Apr	126.0	10.2	0.7	123.7	126.1	131.7	8.4	10.4	14.3
	May	126.4	8.4	0.3	124.0	126.3	132.5	6.5	8.7	13.4
	Jun	128.2	7.0	1.4	126.3	128.0	133.5	5.2	7.3	11.9
	Jul	129.4	6.0	1.0	127.3	129.4	134.9	4.0	6.3	11.5
	Aug	130.0	6.1	0.4	127.9	129.9	135.2	4.1	6.2	11.0
	Sept	130.3	7.0	0.3	128.3	130.3	135.4	5.4	7.1	10.8
	Oct	130.4	6.9	0.1	128.5	130.2	135.1	5.8	6.9	9.5
	Nov	130.8	5.0	0.3	128.9	130.5	135.9	4.6	5.1	6.0
	Dec	130.9	5.8	0.1	129.3	130.5	135.5	6.1	5.7	5.4
2010	Jan	131.4	6.1	0.4	129.8	131.2	135.8	6.7	5.9	5.1
	Feb	131.7	6.1	0.2	130.1	131.2	136.4	6.6	5.8	5.4
	Mar	132.6	6.0	0.7	131.0	131.8	138.3	6.5	5.2	5.9
	Apr	135.0	7.1	1.8	133.5	134.0	140.4	7.9	6.3	6.6
	May	136.3	7.8	1.0	134.8	135.4	141.6	8.7	7.2	6.9
	Jun	138.1	7.7	1.3	137.0	137.0	142.8	8.5	7.0	7.0
	July	138.6	7.0	0.3	137.4	137.6	143.2	7.9	6.4	6.2
	Aug	138.7	6.7	0.1	137.8	137.6	142.7	7.7	5.9	5.6
	Sept	139.4	7.0	0.6	138.6	138.7	143.0	8.0	6.4	5.6
	Oct	139.7	7.2	0.2	138.8	139.1	143.0	8.0	6.8	5.9
	Nov	140.1	7.2	0.3	139.5	139.3	143.2	8.2	6.7	5.4
	Dec	140.6	7.4	0.4	139.8	139.9	144.0	8.1	7.2	6.2
2011	Jan	141.8	7.9	0.8	141.3	141.0	144.5	8.8	7.5	6.4
	Feb	142.9	8.5	0.8	142.4	142.2	145.5	9.5	8.4	6.6
	Mar	143.8	8.5	0.7	143.2	143.2	146.6	9.3	8.7	6.0
	Apr	146.0	8.2	1.5	145.3	145.5	148.8	8.9	8.5	6.0
	May	147.6	8.3	1.1	146.9	146.9	150.5	9.0	8.5	6.2
	Jun	149.0	7.9	0.9	148.4	148.1	152.0	8.3	8.1	6.4
	Jul	149.3	7.8	0.3	148.9	148.3	152.3	8.4	7.7	6.3
	Aug	150.8	8.7	1.0	150.4	149.8	153.4	9.1	8.9	7.5
	Sept	151.4	8.6	0.4	150.9	150.6	153.9	8.9	8.6	7.6
	Oct	152.0	8.8	0.4	151.4	151.5	154.6	9.0	8.9	8.1
	Nov	153.0	9.2	0.6	152.4	152.7	155.0	9.3	9.6	8.2
	Dec	153.5	9.2	0.4	152.9	153.1	155.9	9.4	9.4	8.3
2012	Jan	154.3	8.8	0.5	153.5	154.0	157.0	8.6	9.2	8.6
	Feb	154.7	8.2	0.2	153.7	154.4	157.6	8.0	8.6	8.3
% Change on last month		0.2			0.2	0.2	0.4			

Table 2: National Cost-of-Living Group & Section Indices (September 2006 = 100.0)

TABLE 2 :National Cost-of-Living Group and Section Indices (September 2006=100.0)										
Group Section	Weights	This month	Last month	3 months ago	6 months ago	12 months ago	Percentage Change on:			
		Feb 2012	Jan 2012	Nov 2011	Aug 2011	Feb 2011	Last month	3 months ago	6 months ago	12 months ago
1 Food & Non-Alcoholic Beverages	21.84	173.3	172.3	170.7	167.9	159.1	0.6	1.6	3.2	8.9
1.1 Bread & Cereals	6.51	169.3	167.2	164.6	161.4	157.0	1.3	2.9	4.9	7.9
1.2 Meat (Fresh, Chilled & Frozen)	3.15	179.4	179.0	176.2	174.7	168.7	0.2	1.8	2.7	6.3
1.3 Fish (Fresh, Chilled & Frozen)	0.20	171.7	170.2	170.2	169.7	165.0	0.8	0.9	1.1	4.0
1.4 Milk, Cheese & Milk Products	2.19	178.7	177.8	178.1	177.5	161.6	0.5	0.3	0.6	10.5
1.5 Oils & Fats	0.90	211.8	209.9	206.3	205.6	187.9	0.9	2.7	3.0	12.7
1.6 Fruit	0.67	123.5	123.4	118.9	114.5	107.6	0.1	3.9	7.8	14.7
1.7 Vegetables	1.94	170.8	170.5	173.7	169.5	157.7	0.2	(1.6)	0.8	8.3
1.8 Sugar, Jam, Honey, Chocolate & Confectionery	1.36	177.1	176.4	174.8	169.5	150.6	0.4	1.3	4.5	17.6
1.9 Food not else where Classified	2.36	175.7	175.4	173.8	171.4	161.5	0.2	1.1	2.5	8.8
1.10 Coffee, Tea & Cocoa	0.63	193.1	192.3	190.1	186.5	176.8	0.4	1.6	3.6	9.2
1.11 Mineral Waters, Soft Drinks, Fruits & Veg. Juices	1.94	161.0	160.4	159.2	155.8	150.6	0.4	1.2	3.3	7.0
2 Alcoholic Beverages, Tobacco & Narcotics	9.29	193.6	193.5	192.9	192.4	183.9	0.1	0.4	0.6	5.3
2.1 Alcoholic Beverages	8.09	193.3	193.2	192.7	192.3	184.0	0.0	0.3	0.5	5.1
2.2 Tobacco	1.20	195.7	195.2	194.4	193.2	183.2	0.3	0.7	1.3	6.9
3 Clothing and Footwear	7.52	140.2	139.6	137.2	135.1	127.9	0.4	2.2	3.8	9.6
3.1 Clothing	3.33	159.8	159.2	155.5	153.1	142.3	0.4	2.7	4.4	12.3
3.2 Other articles of Clothing	1.82	125.8	124.7	122.5	119.5	115.6	0.9	2.7	5.3	8.9
3.3 Cleaning, Repair & Hire	0.03	169.8	168.9	167.1	163.0	150.9	0.5	1.6	4.1	12.5
3.4 Footwear	2.34	123.1	122.9	121.9	121.1	116.8	0.2	1.0	1.7	5.4
4 Housing, Water, Electr. Gas & Other Fuels	11.46	142.0	141.9	141.2	138.9	129.4	0.1	0.6	2.2	9.7
4.1 Rent paid by Tenants	5.68	127.7	127.7	126.8	125.1	121.8	0.0	0.7	2.1	4.8
4.2 Materials for Maintenance & Repair of dwellings	2.57	141.2	140.9	140.6	137.6	132.7	0.2	0.5	2.6	6.4
4.3 Water Supply & Misc. Services	1.14	102.2	102.2	102.2	102.2	102.2	0.0	0.0	0.0	0.0
4.4 Electricity Gas and other Fuels	2.06	204.0	203.9	203.0	199.1	161.0	0.0	0.5	2.5	26.7
5 Furnishing, H/H Equipment & Routine Maintenance	6.76	155.9	155.6	154.3	150.4	142.9	0.2	1.0	3.6	9.1
5.1 Furniture & Furnishing	2.31	131.5	131.2	129.9	127.4	119.3	0.2	1.2	3.2	10.2
5.2 Carpets & Other Floor Coverings	0.04	145.8	145.3	144.6	143.0	138.1	0.4	0.8	1.9	5.6
5.3 Household Textiles	0.44	145.5	145.4	143.3	141.4	134.9	0.1	1.5	2.9	7.9
5.4 Household Appliances	0.69	132.7	132.6	131.3	129.4	126.1	0.1	1.1	2.5	5.3
5.5 Glassware, Tableware & Household Utensils	0.44	160.7	160.3	158.0	156.2	152.6	0.2	1.7	2.8	5.3
5.6 Small Tools, Miscellaneous Accessories	0.06	165.4	165.2	164.0	162.2	158.4	0.1	0.8	2.0	4.4
5.7 Goods & Services for H/hold Maintenance	2.79	182.6	182.2	181.1	175.0	166.0	0.2	0.8	4.4	10.0

Table 2: National Cost-of-Living Group & Section Indices (September 2006 = 100.0) (Cont.)

6	Health	2.71	136.9	136.5	136.1	133.7	128.8	0.3	0.6	2.4	6.3
6.1	Medical Products, App. & Equip.	0.35	155.0	152.9	150.9	145.6	136.9	1.4	2.7	6.4	13.2
6.2	Out-patient Services	0.66	133.0	132.5	131.8	124.8	124.6	0.3	0.9	6.5	6.7
6.3	Hospital Services	1.71	134.7	134.7	134.7	134.7	128.7	0.0	0.0	0.0	4.6
7	Transport	18.98	153.5	153.4	152.6	148.7	137.5	0.1	0.6	3.2	11.6
7.1	Purchase of Vehicles	5.89	148.8	148.6	146.7	146.4	143.4	0.1	1.5	1.7	3.8
7.2	Operation of Personal Transport	10.92	154.5	154.4	154.2	147.6	132.3	0.0	0.2	4.7	16.8
7.3	Transport Services	2.17	160.9	160.9	160.3	160.3	147.7	0.0	0.4	0.4	9.0
8	Communication	3.01	91.2	91.2	91.2	91.2	96.4	0.0	0.0	0.0	(5.4)
8.1	Postal Services	0.04	170.8	170.8	170.8	170.8	170.8	0.0	0.0	0.0	0.0
8.2	Telephone & Telefax Equipment	0.74	66.6	66.6	66.6	66.6	66.5	0.0	0.0	0.0	0.1
8.3	Telephone & Telefax Services	2.23	97.9	97.9	97.9	97.9	105.0	0.0	0.0	0.0	(6.8)
9	Recreation & Culture	2.22	125.7	125.6	125.3	124.7	117.6	0.1	0.4	0.8	6.9
9.1	Audio Visual, Photographic & Info. Proce. Equip.	1.09	102.6	102.5	102.4	102.6	100.3	0.1	0.3	0.1	2.3
9.2	Other Recreational Items & Equip.	0.18	150.1	149.8	148.8	146.5	136.6	0.2	0.8	2.4	9.8
9.3	Recreational & Cultural Services	0.76	137.4	137.4	137.5	137.0	125.5	0.0	(0.0)	0.3	9.5
9.4	Newspapers, Books & Stationary	0.19	186.1	185.5	183.5	180.2	165.3	0.3	1.4	3.3	12.6
10	Education	3.37	141.5	141.5	133.2	133.2	133.2	0.0	6.3	6.3	6.3
10.1	Pre-Primary & Primary Education	1.10	173.0	173.0	154.5	154.5	154.5	0.0	12.0	12.0	12.0
10.2	Secondary & Tertiary Education	2.26	126.2	126.2	122.8	122.8	122.8	0.0	2.8	2.8	2.8
11	Restaurants & Hotels	3.27	187.5	187.1	185.3	183.7	172.9	0.2	1.2	2.1	8.4
11.1	Restaurants, Cafes and the Like	3.08	189.8	189.4	187.7	186.1	175.0	0.2	1.1	2.0	8.4
11.2	Accommodation Services	0.19	149.8	149.6	146.4	143.4	139.1	0.1	2.3	4.4	7.7
12	Miscellaneous Goods & Services	9.57	127.7	127.7	127.2	126.8	122.6	0.0	0.4	0.8	4.1
12.1	Personal Care	0.66	147.1	146.9	146.9	143.9	138.5	0.2	0.2	2.2	6.2
12.2	Personal Effects N.E.C.	0.04	126.4	125.7	123.1	118.9	115.9	0.5	2.7	6.3	9.1
12.3	Social Protection	0.14	146.8	146.8	146.8	146.8	146.0	0.0	0.0	0.0	0.6
12.4	Insurance	6.32	129.6	129.6	128.9	128.9	123.9	0.0	0.5	0.5	4.6
12.5	Financial Services	0.18	137.7	137.1	135.9	133.9	127.1	0.4	1.3	2.9	8.4
12.6	Taxes Licences, Fees	2.24	114.7	114.7	114.4	113.9	112.6	0.0	0.2	0.7	1.8
	All-Items Index	100.0	154.7	154.3	153.0	150.8	142.9	0.2	1.1	2.6	8.2

TABLE 3: COST-OF-LIVING INDEX BY TRADEABILITY (September 2006 = 100.0)

Weights	All Items		Non-Tradeables		Domestic Tradeables		Imported Tradeables		All Tradeables		
	Index 100.00	Inflation	Index 30.92	Inflation	Index 23.91	Inflation	Index 45.17	Inflation	Index 69.08	Inflation	
2009	Jan	123.8	12.8	117.1	9.8	145.1	23.3	117.2	8.4	126.8	14.0
	Feb	124.1	11.7	117.4	8.9	146.3	23.2	116.9	6.8	127.1	13.0
	Mar	125.2	11.7	118.7	9.2	147.5	21.7	117.8	7.5	127.8	12.7
	Apr	126.0	10.2	119.5	8.8	148.5	21.4	118.6	4.5	128.7	10.5
	May	126.4	8.4	119.7	8.8	148.6	19.9	119.3	1.7	129.2	8.1
	Jun	128.2	7.0	120.9	8.0	148.6	18.0	122.4	0.4	131.2	6.5
	Jul	129.4	6.0	121.5	8.5	149.6	17.6	124.2	-1.7	132.8	4.0
	Aug	130.0	6.1	121.7	7.5	149.5	16.5	125.3	-0.4	133.4	5.4
	Sept	130.3	7.0	122.5	7.9	149.1	14.9	125.7	2.1	133.6	6.7
	Oct	130.4	6.9	122.4	8.4	149.1	13.9	125.8	1.9	133.7	6.1
	Nov	130.8	5.0	122.6	8.3	149.4	3.3	126.5	3.3	134.2	4.1
	Dec	130.9	5.8	123.2	8.5	149.0	1.9	126.6	6.0	134.2	5.1
2010	Jan	131.4	6.1	123.8	5.7	149.3	3.0	127.2	8.5	134.6	6.1
	Feb	131.7	6.1	124.0	5.6	149.5	2.2	127.4	9.0	134.9	6.1
	Mar	132.6	6.0	124.6	4.9	150.5	2.0	128.7	9.3	136.0	6.4
	Apr	135.0	7.1	126.9	6.2	153.7	3.5	130.6	10.1	138.3	7.5
	May	136.3	7.8	128.7	7.5	154.9	4.2	131.7	10.4	139.5	8.0
	Jun	138.1	7.7	129.7	7.3	154.8	4.2	135.1	10.3	141.6	7.9
	July	138.6	7.0	129.9	6.9	155.3	3.8	135.7	9.2	142.2	7.1
	Aug	138.7	6.7	130.0	6.8	155.3	3.8	135.9	8.5	142.4	6.7
	Sept	139.4	7.0	130.9	6.9	155.5	4.3	136.8	8.8	143.1	7.1
	Oct	139.7	7.2	131.0	7.0	155.6	4.3	137.3	9.1	143.4	7.3
	Nov	140.1	7.2	131.2	7.0	155.9	4.3	137.9	9.0	144.0	7.3
	Dec	140.6	7.4	131.6	6.9	156.5	5.0	138.4	9.3	144.5	7.7
2011	Jan	141.8	7.9	132.8	7.3	158.2	5.9	139.2	9.5	145.6	8.2
	Feb	142.9	8.5	132.9	7.2	158.9	6.2	141.3	10.9	147.2	9.1
	Mar	143.8	8.5	133.7	7.3	160.1	6.4	142.2	10.5	148.2	9.0
	Apr	146.0	8.2	135.2	6.5	162.2	5.5	144.8	10.9	150.6	8.9
	May	147.6	8.3	135.3	5.2	163.5	5.5	147.6	12.1	152.9	9.6
	Jun	149.0	7.9	138.0	6.4	164.8	6.5	148.1	9.6	153.6	8.5
	Jul	149.3	7.8	138.0	6.3	165.4	6.5	148.6	9.5	154.2	8.4
	Aug	150.8	8.7	139.0	7.0	165.7	6.7	150.9	11.1	155.8	9.5
	Sept	151.4	8.6	139.9	6.9	166.3	6.9	151.3	10.6	156.3	9.2
	Oct	152.0	8.8	140.3	7.1	167.0	7.4	152.1	10.8	157.0	9.5
	Nov	153.0	9.2	140.4	7.0	167.5	7.4	153.9	11.6	158.4	10.0
	Dec	153.5	9.2	140.7	6.9	168.0	7.4	154.6	11.8	159.1	10.1
2012	Jan	154.3	8.8	141.1	6.2	169.6	7.2	155.3	11.5	160.0	9.9
	Feb	154.7	8.2	141.0	6.1	170.4	7.3	155.7	10.2	160.6	9.1
% Change on last month		0.2		(0.0)		0.5		0.3		0.3	

TABLE 4: Core Inflation Rates by Exclusion and Trimmed Mean

Year	Month	Consumer Price Index (Trimmed Mean) (September 2006 = 100)	Core Monthly Inflation Rate (Trimmed Mean) (percentage)	Consumer Price Index (Excluding Administered Prices) (September 2006 = 100)	Core Monthly Inflation (Excluding Administered Prices) (percentage)
2009					
	Jan	122.4	11.2	127.7	16.4
	Feb	122.6	10.3	128.1	15.8
	Mar	123.7	10.6	129.4	15.8
	Apr	124.6	9.9	130.3	15.5
	May	125.0	8.7	130.8	14.5
	Jun	126.4	7.5	131.9	13.8
	Jul	127.7	7.4	133.4	14.2
	Aug	128.1	6.9	133.5	13.4
	Sept	128.5	6.8	134.0	12.6
	Oct	127.1	5.8	134.0	11.1
	Nov	129.5	5.3	134.5	7.7
	Dec	127.7	6.4	134.7	7.0
2010					
	Jan	129.7	6.7	135.2	5.9
	Feb	129.0	6.7	135.5	5.8
	Mar	130.0	6.5	136.7	5.6
	Apr	133.1	7.7	139.1	6.8
	May	133.2	8.3	140.2	7.2
	Jun	135.0	8.1	141.0	6.9
	July	136.6	7.6	141.5	6.1
	Aug	135.4	7.2	142.0	6.3
	Sept	136.8	7.4	142.7	6.5
	Oct	137.2	7.6	143.1	6.8
	Nov	137.9	7.6	143.6	6.7
	Dec	137.5	7.7	144.2	7.1
2011					
	Jan	139.6	8.0	145.5	7.6
	Feb	142.1	8.6	146.0	7.7
	Mar	142.6	8.4	147.1	7.6
	Apr	143.4	8.0	149.4	7.4
	May	148.7	8.2	150.5	7.3
	Jun	148.8	7.6	151.4	7.4
	July	150.3	7.4	151.9	7.3
	Aug	153.7	8.4	152.5	7.4
	Sept	154.8	8.1	153.2	7.4
	Oct	155.6	8.3	154.0	7.6
	Nov	156.3	8.5	154.4	7.5
	Dec	156.9	8.5	155.1	7.5
2012					
	Jan	157.9	8.1	156.0	7.2
	Feb	158.0	7.8	156.5	7.2

Prices Collection Coverage for Botswana Consumer Price Index (CPI) - 2012

