

STATISTICS BOTSWANA



Consumer Price Index

December 2016

Contact Statistician:
Phaladi Labobedi

Statistics Botswana. Private Bag 0024 Gaborone Botswana
Tel: (+267) 367 1300. **Fax:** (+267) 395 2201. **Email:** info@statsbots.org.bw **Website:** www.statsbots.org.bw

CONTENTS

COMMENTARY

Section 1: Headline Inflation

Section 2: Core Inflation

CHARTS

1. National Rates of Inflation, December 2013 – December 2016
2. Monthly Changes in the Cost-of-Living Index, December 2013 – December 2016
3. Non-Tradable Inflation Rates, December 2013 – December 2016
4. Tradable Inflation Rates, December 2013 – December 2016

TABLES

1. Cost-of-Living Index Series (January 2014 – December 2016)
2. National Cost-of-Living Group and Section Indices
3. Cost-of-Living Index by Tradability (January 2014 – December 2016)
4. Core Inflation Rates
5. Annual Average Inflation Rates 2008-2015

GLOSSARY

COMMENTARY

Section 1: Headline Inflation

The annual inflation rate in December 2016 was 3.0 percent, an increase of 0.1 of a percentage point on the November 2016 rate of 2.9 percent. The inflation rates for geographical regions between November 2016 and December 2016 indicated that Urban Villages' went up to 3.0 percent from 2.9 percent, Cities & Towns increased to 2.8 percent from 2.7 percent, and Rural Villages' remained unchanged at 3.5 percent.

The December national Consumer Price index moved from 100.4 in November to 100.5 in December 2016, an increase of 0.1 percent. The Rural Villages index realized a rise of 0.1 percent, moving from 100.7 to 100.8. The Cities & Towns' index' rose by 0.1 percent, advancing from 100.3 in November to 100.5 in December, while Urban Villages' index remained unchanged at 100.4 between the two months.

Group indices were generally moving at slow pace between November and December 2016, recording changes of less than 0.5 percent.

Furnishing, H/H Equipment Routine Maintenance went up by 0.2 percent, from 100.6 in November to 100.8 in December. This was due to an increase in the constituent section indices especially Furniture and Furnishing, Household Appliances and Goods & Services for H/hold Maintenance.

The Food & Non-Alcoholic Beverages index group advanced from 100.9 to 101.0, recording a rise of 0.1 percent between November and December. The rise was attributed to the general increase in the section indices.

All-Tradable inflation rate was 2.5 percent in December, an increase of 0.4 of a percentage point on the November 2016 rate of 2.1 percent. The *Domestic Tradable* inflation rate rose from 3.4 percent in November to 3.6 percent in December. The *Imported Tradable* inflation rate increased from 1.2 percent to 1.8 percent between the two periods. The *Non-Tradable* inflation rate went down from 4.9 to 4.3 percent between December and November 2016.

The *All-Tradable index* moved from 100.6 in November to 100.7 in December recording a rise of 0.1 percent. The *Domestic Tradable* index advanced from 100.7 in November to 100.9 in December, registering an increase of 0.2 percent. The *Imported Tradable* index went up by 0.1 percent moving from 100.5 to 100.6 between the two periods.

Section 2: Core Inflation

The Trimmed Mean Core Inflation rate registered a 2.5 percent the same rate as in November. The Core Inflation rate by exclusion remained unchanged at 3.7 percent in December 2016.

CHARTS

Chart 1: National Inflation Rate 2013 - 2016

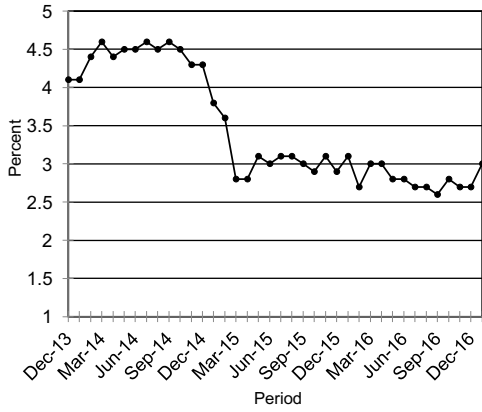


Chart 2: Monthly Changes in Cost-of-Living Index 2013 - 2016

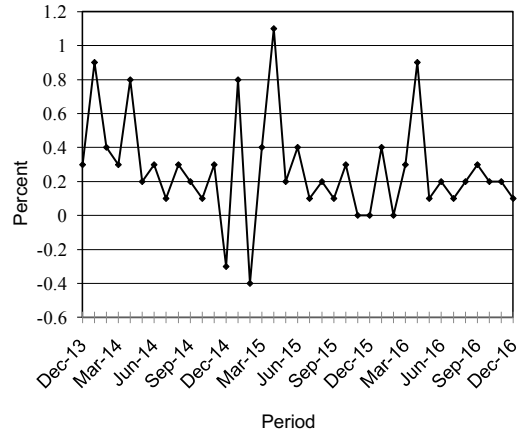


Chart 3: Non-Tradable Inflation 2013 - 2016

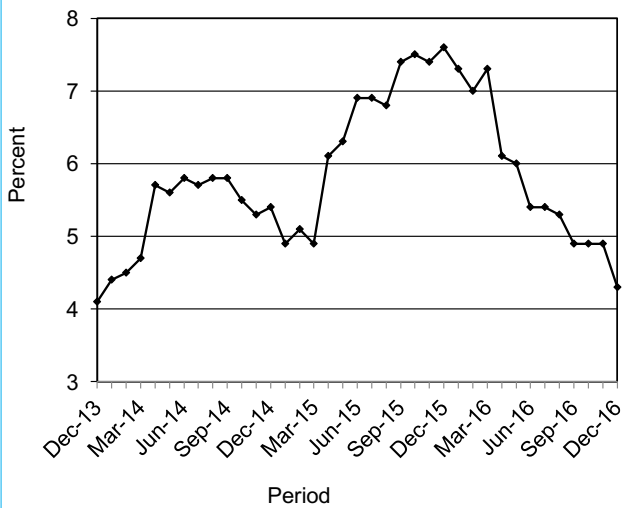
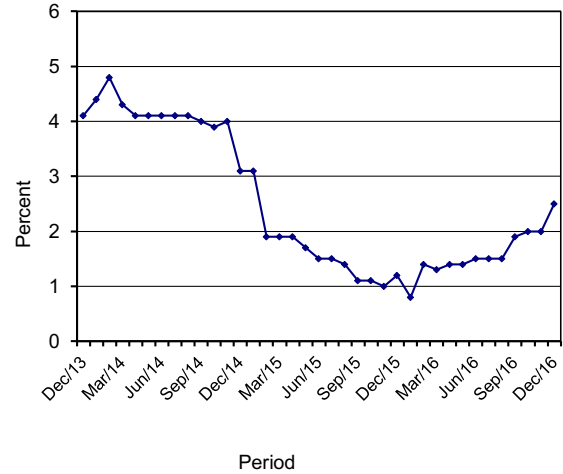


Chart 4: Tradable Inflation 2013 - 2016



A.N. Majelantle
Statistician General
 13th January 2017

TABLES

TABLE 1: COST OF LIVING INDEX (September 2016 =100.0)

		Food	Alcohol and Tobacco	Clothing and Footwear	Housing	Furniture etc	Health	Transport	Communication	Rec. & Culture	Education	Rest. & Hotels	Miscellaneous
Weights		16.51	7.83	6.27	14.90	6.39	3.62	20.65	4.27	2.92	3.34	2.76	10.55
2014	Jan	94.3	87.6	84.2	85.1	88.8	88.7	108.2	99.5	90.1	90.6	88.5	82.2
	Feb	94.6	89.5	84.6	85.2	88.8	88.8	108.3	99.5	90.2	90.6	89.0	82.3
	Mar	94.9	90.8	85.0	85.7	89.8	88.9	107.7	99.5	90.3	90.6	89.4	82.3
	Apr	95.2	91.7	85.3	86.8	90.0	89.5	107.7	99.5	91.7	90.6	89.8	86.0
	May	95.5	92.4	85.8	86.8	90.1	89.6	107.7	99.5	91.8	90.6	90.2	86.1
	Jun	95.7	92.5	86.4	87.2	91.0	91.5	107.7	99.5	91.9	90.6	90.4	86.2
	Jul	95.8	92.6	86.8	87.2	91.1	91.6	107.8	99.5	92.0	90.6	90.7	86.2
	Aug	95.9	92.6	87.1	87.2	91.5	91.7	108.8	99.5	92.1	90.6	91.2	86.3
	Sept	96.0	92.7	87.5	87.5	92.1	91.9	108.9	99.5	92.4	90.6	91.4	86.3
	Oct	96.1	92.8	87.9	87.5	92.2	91.9	108.9	99.5	92.4	90.6	91.5	86.4
	Nov	96.3	92.8	88.5	87.6	92.6	92.1	109.5	99.5	92.7	90.6	91.7	86.8
	Dec	96.5	92.8	89.1	88.4	93.0	92.1	106.7	99.5	92.9	90.6	91.9	86.8
2015	Jan	96.5	94.9	89.7	88.4	94.1	94.4	107.0	99.5	92.9	96.4	92.6	87.0
	Feb	96.7	95.8	90.7	88.3	94.9	94.5	102.4	99.5	93.2	96.4	94.0	87.2
	Mar	96.7	96.8	91.4	88.9	95.5	94.6	102.5	99.5	93.3	96.4	94.5	87.2
	Apr	96.7	97.2	91.8	92.2	95.7	94.6	102.7	99.5	97.7	96.4	94.6	92.5
	May	96.7	97.5	92.3	92.1	95.9	96.9	102.7	100.0	97.9	96.4	94.8	92.5
	Jun	96.6	97.6	92.9	93.7	96.6	97.0	102.8	100.0	97.9	96.4	95.4	92.9
	Jul	96.7	97.8	93.3	93.7	96.7	97.3	102.9	100.0	98.1	96.4	95.6	93.0
	Aug	96.9	98.0	94.1	93.8	97.0	97.3	102.9	100.0	98.1	96.5	95.9	93.1
	Sept	97.0	97.3	94.6	96.0	97.6	97.5	101.8	100.0	98.2	96.5	96.2	93.1
	Oct	97.2	98.2	95.2	96.0	97.9	97.5	101.8	100.0	98.4	96.5	97.1	93.2
	Nov	97.2	98.4	95.6	95.9	97.8	97.6	101.8	100.0	98.5	96.5	97.3	93.2
	Dec	97.2	98.5	96.0	97.0	98.1	97.6	100.5	100.0	98.6	96.5	97.6	93.1
2016	Jan	97.6	98.6	96.8	97.1	98.2	97.6	100.5	100.0	98.9	99.9	97.9	93.6
	Feb	98.2	98.7	97.4	96.9	98.3	97.7	99.1	100.0	99.5	99.9	98.2	93.3
	Mar	98.5	98.8	98.0	98.2	98.5	97.8	99.2	100.0	99.6	99.9	98.4	93.5
	Apr	99.3	99.3	98.5	98.2	98.7	98.0	99.5	100.0	99.6	100.0	98.7	99.6
	May	99.4	99.4	98.9	98.2	98.8	99.9	99.5	100.0	99.7	100.0	98.9	99.6
	Jun	99.1	99.6	99.4	99.0	99.3	100.0	99.8	100.0	99.6	100.0	99.2	99.9
	Jul	99.3	99.9	99.6	99.0	99.4	100.0	99.9	100.0	99.7	100.0	99.3	100.0
	Aug	99.7	100.0	99.9	99.0	99.5	100.0	100.0	100.0	99.8	100.0	99.6	100.0
	Sept	100.0	100.0	100.0	100.0	100.0	100.0	100.0	100.0	100.0	100.0	100.0	100.0
	Oct	100.4	100.7	100.2	100.0	100.2	100.0	100.0	100.0	100.2	100.0	100.2	100.4
	Nov	100.9	101.2	100.6	100.1	100.6	100.2	100.1	100.0	100.2	100.0	100.5	100.5
	Dec	101.0	101.3	100.7	100.2	100.8	100.3	100.2	100.0	100.3	100.0	100.6	100.5
% Change on													
Last month													
		0.1	0.1	0.1	0.1	0.2	0.1	0.1	0.0	0.1	0.0	0.1	0.1

Consumer Price Index- December 2016

TABLE 1: COST OF LIVING INDEX (Cont.)

		All Items Index	National Inflation Rate	Monthly Change	Towns & Cities Index	Urban Village Index	Rural Villages Index	Annual Inflation		
								Towns & Cities	Urban Villages	Rural
		100.0	%	%	41.8	34.5	23.7	%	%	%
2014	Jan	92.0	4.4	0.9	92.0	92.3	91.6	4.0	4.5	5.0
	Feb	92.4	4.6	0.4	92.5	92.6	92.0	4.5	4.7	5.1
	Mar	92.7	4.4	0.3	92.8	93.0	92.1	4.4	4.3	4.6
	Apr	93.5	4.5	0.8	93.6	93.6	93.0	4.4	4.3	5.3
	May	93.7	4.5	0.2	93.7	93.9	93.1	4.2	4.6	5.2
	Jun	94.0	4.6	0.3	94.1	94.1	93.4	4.4	4.5	5.1
	Jul	94.1	4.5	0.1	94.2	94.3	93.4	4.3	4.5	5.0
	Aug	94.3	4.6	0.3	94.5	94.5	93.7	4.5	4.5	5.0
	Sept	94.5	4.5	0.2	94.5	94.7	94.1	4.3	4.4	5.0
	Oct	94.6	4.3	0.1	94.6	94.7	94.3	4.2	4.2	4.8
	Nov	94.9	4.3	0.3	94.9	95.0	94.5	4.3	4.3	4.5
	Dec	94.6	3.8	(0.3)	94.7	94.9	94.2	3.8	3.8	3.6
2015	Jan	95.4	3.6	0.8	95.3	95.7	95.0	3.6	3.7	3.7
	Feb	95.0	2.8	(0.4)	94.9	95.2	95.0	2.6	2.9	3.2
	Mar	95.3	2.8	0.4	95.1	95.6	95.4	2.5	2.8	3.6
	Apr	96.4	3.1	1.1	96.5	96.3	96.1	3.1	3.0	3.4
	May	96.5	3.0	0.2	96.5	96.5	96.5	3.0	2.8	3.6
	Jun	96.9	3.1	0.4	96.9	96.9	96.6	3.1	3.0	3.4
	Jul	97.0	3.1	0.1	97.1	97.1	96.7	3.1	3.0	3.5
	Aug	97.2	3.0	0.2	97.2	97.3	96.9	2.8	3.0	3.4
	Sept	97.3	2.9	0.1	97.3	97.4	97.2	2.9	2.8	3.3
	Oct	97.6	3.1	0.3	97.7	97.6	97.2	3.2	3.0	3.1
	Nov	97.6	2.9	0.0	97.7	97.6	97.3	2.9	2.7	3.0
	Dec	97.6	3.1	(0.0)	97.7	97.5	97.4	3.2	2.8	3.4
2016	Jan	97.9	2.7	0.4	97.9	98.1	97.7	2.7	2.6	2.8
	Feb	97.9	3.0	(0.0)	97.7	98.2	97.9	2.9	3.2	3.1
	Mar	98.2	3.0	0.3	98.1	98.6	98.0	3.1	3.2	2.7
	Apr	99.1	2.8	0.9	99.0	99.4	98.7	2.6	3.2	2.7
	May	99.2	2.8	0.1	99.1	99.5	98.9	2.7	3.1	2.5
	Jun	99.4	2.7	0.2	99.4	99.7	99.1	2.5	2.8	2.6
	Jul	99.6	2.7	0.1	99.5	99.7	99.6	2.5	2.7	3.0
	Aug	99.7	2.6	0.2	99.6	99.9	99.8	2.6	2.6	2.9
	Sept	100.0	2.8	0.3	100.0	100.0	100.0	2.8	2.7	2.9
	Oct	100.2	2.7	0.2	100.2	100.2	100.2	2.5	2.7	3.1
	Nov	100.4	2.9	0.3	100.3	100.4	100.7	2.7	2.9	3.5
	Dec	100.5	3.0	0.1	100.5	100.4	100.8	2.8	3.0	3.5
% Change on last month		0.1			0.1	0.0	0.1			

Consumer Price Index- December 2016

TABLE 2 : NATIONAL COST-OF-LIVING GROUP AND SECTION INDICES (SEPTEMBER 2016=100.0)

	Group Section	Weights	This month Dec 2016	Last month Nov 2016	3 months ago Sep 2016	6 months ago June 2016	12 months ago Dec 2015	Percentage Change on:			
								Last month	3 months ago	6 months ago	12 months ago
1	Food & Non-Alcoholic Beverages	16.51	101.0	100.9	100.0	99.1	97.2	0.1	1.0	1.9	3.9
1.1	Bread & Cereals	5.27	100.7	100.7	100.0	97.4	94.7	0.0	0.7	3.5	6.4
1.2	Meat (Fresh, Chilled & Frozen)	0.36	100.9	100.6	100.0	99.8	99.0	0.2	0.9	1.1	1.9
1.3	Fish (Fresh, Chilled & Frozen)	0.92	100.8	100.6	100.0	99.3	96.9	0.2	0.8	1.5	4.1
1.4	Milk, Cheese & Milk Products	2.66	99.8	99.7	100.0	99.6	99.3	0.1	(0.2)	0.1	0.5
1.5	Oils & Fats	0.17	101.1	101.1	100.0	99.8	99.6	0.1	1.1	1.3	1.6
1.6	Fruit	1.49	103.1	103.0	100.0	95.4	91.4	0.1	3.1	8.1	12.8
1.7	Vegetables	0.70	101.9	101.8	100.0	103.9	95.9	0.1	1.9	(1.9)	6.2
1.8	Sugar, Jam, Honey, Chocolate & Confectionery	0.86	101.6	101.4	100.0	96.2	95.1	0.2	1.6	5.6	6.9
1.9	Food not else where Classified	1.80	100.1	100.2	100.0	100.1	99.7	(0.0)	0.1	(0.0)	0.4
1.10	Coffee, Tea & Cocoa	1.29	100.6	100.5	100.0	97.6	97.1	0.1	0.6	3.0	3.6
1.11	Mineral Waters, Soft Drinks, Fruits & Veg. Juices	0.99	100.6	100.7	100.0	99.9	100.3	(0.1)	0.6	0.7	0.3
2	Alcoholic Beverages, Tobacco & Narcotics	7.83	101.3	101.2	100.0	99.6	98.5	0.1	1.3	1.8	2.8
2.1	Alcoholic Beverages	6.19	101.4	101.4	100.0	99.6	98.9	0.1	1.4	1.9	2.6
2.2	Tobacco	1.65	100.7	100.7	100.0	99.5	96.2	0.0	0.7	1.3	4.7
3	Clothing and Footwear	6.27	100.7	100.6	100.0	99.4	96.0	0.1	0.7	1.3	4.9
3.1	Clothing	2.42	100.6	100.5	100.0	99.3	95.2	0.1	0.6	1.3	5.7
3.2	Other articles of Clothing	1.01	100.6	100.5	100.0	99.5	98.2	0.1	0.6	1.1	2.5
3.3	Cleaning, Repair & Hire	0.99	100.2	100.2	100.0	99.8	94.8	0.0	0.2	0.4	5.8
3.4	Footwear	1.85	101.2	101.0	100.0	99.4	95.9	0.2	1.2	1.8	5.5
4	Housing, Water, Electr. Gas & Other Fuels	14.90	100.2	100.1	100.0	99.0	97.0	0.1	0.2	1.1	3.3
4.1	Rent paid by Tenants	6.25	100.0	100.0	100.0	97.9	93.4	0.0	0.0	2.2	7.0
4.2	Materials for Maintenance & Repair of dwellings	4.29	100.6	100.3	100.0	100.3	99.6	0.3	0.6	0.3	1.0
4.3	Water Supply & Misc. Services	1.50	100.0	100.0	100.0	100.0	99.8	0.0	0.0	0.0	0.2
4.4	Electricity Gas and other Fuels	2.86	100.1	100.1	100.0	100.0	100.8	0.0	0.1	0.2	(0.6)
5	Furnishing, H/H Equipment & Routine Maintenance	6.39	100.8	100.6	100.0	99.3	98.1	0.2	0.8	1.6	2.8
5.1	Furniture & Furnishing	1.65	101.0	100.8	100.0	99.2	97.7	0.2	1.0	1.8	3.4
5.2	Carpets & Other Floor Coverings	0.24	101.1	101.1	100.0	99.2	96.4	(0.0)	1.1	1.9	4.9
5.3	Household Textiles	0.41	101.1	101.0	100.0	98.8	97.1	0.1	1.1	2.3	4.1
5.4	Household Appliances	0.85	101.4	101.2	100.0	99.8	98.2	0.2	1.4	1.6	3.2
5.5	Glassware, Tableware & Household Utensils	0.40	100.6	100.5	100.0	99.7	98.9	0.1	0.6	0.9	1.7
5.6	Small Tools, Miscellaneous Accessories	0.06	100.3	100.2	100.0	99.7	97.4	0.0	0.3	0.6	2.9
5.7	Goods & Services for H/hold Maintenance	2.78	100.6	100.3	100.0	99.2	98.4	0.2	0.6	1.4	2.2
6	Health	3.62	100.3	100.2	100.0	100.0	97.6	0.1	0.3	0.3	2.8
6.1	Medical Products, App. & Equip.	0.81	101.3	101.0	100.0	99.8	98.5	0.2	1.3	1.5	2.8
6.2	Out-patient Services	0.70	100.0	100.0	100.0	100.0	99.1	0.0	0.0	0.0	0.9
6.3	Hospital Services	2.10	100.0	100.0	100.0	100.0	96.7	0.0	0.0	0.0	3.4

Consumer Price Index- December 2016

TABLE 2 : NATIONAL COST-OF-LIVING GROUP AND SECTION INDICES (SEPTEMBER 2016=100.0) Cont'd

	Group Section	Weights	This month Dec 2016	Last month Nov 2016	3 months ago Sep 2016	6 months ago June 2016	12 months ago Dec 2015	Percentage Change on:			
								Last month	3 months ago	6 months ago	12 months ago
7	Transport	20.65	100.2	100.1	100.0	99.8	100.5	0.1	0.2	0.4	(0.3)
7.1	Purchase of Vehicles	5.29	100.2	100.2	100.0	99.6	100.1	0.0	0.2	0.7	0.1
7.2	Operation of Personal Transport	11.13	100.2	100.1	100.0	99.9	100.9	0.1	0.2	0.3	(0.6)
7.3	Transport Services	4.22	100.0	100.0	100.0	100.0	99.8	0.0	0.0	0.0	0.2
8	Communication	4.27	100.0	100.0	100.0	100.0	100.0	0.0	0.0	0.0	0.0
8.1	Postal Services	0.15	100.0	100.0	100.0	100.0	100.0	0.0	0.0	0.0	0.0
8.2	Telephone & Telefax Equipment	0.71	100.0	100.0	100.0	100.0	100.0	0.0	0.0	0.0	0.0
8.3	Telephone & Telefax Services	3.41	100.0	100.0	100.0	100.0	100.0	0.0	0.0	0.0	0.0
9	Recreation & Culture	2.92	100.3	100.2	100.0	99.6	98.6	0.1	0.3	0.7	1.7
9.1	Audio Visual, Photographic & Info. Proce. Equip.	1.96	100.3	100.3	100.0	99.5	98.7	0.1	0.3	0.9	1.6
9.2	Other Recreational Items & Equip.	0.46	100.4	100.2	100.0	99.6	95.0	0.2	0.4	0.8	5.6
9.3	Recreational & Cultural Services	0.37	100.0	100.0	100.0	100.0	99.8	0.0	0.0	0.0	0.2
9.4	Newspapers, Books & Stationary	0.13	100.3	100.1	100.0	99.1	97.4	0.1	0.3	1.1	2.9
10	Education	3.34	100.0	100.0	100.0	100.0	96.5	0.0	0.0	0.0	3.6
10.1	Pre-Primary & Primary Education	0.80	100.0	100.0	100.0	100.0	96.9	0.0	0.0	0.0	3.2
10.2	Secondary & Tertiary Education	2.54	100.0	100.0	100.0	100.0	96.3	0.0	0.0	0.0	3.8
11	Restaurants & Hotels	2.76	100.6	100.5	100.0	99.2	97.6	0.1	0.6	1.4	3.1
11.1	Restaurants, Cafes and the Like	2.31	100.7	100.5	100.0	99.2	97.6	0.1	0.7	1.4	3.1
11.2	Accommodation Services	0.45	100.5	100.5	100.0	98.8	96.9	0.0	0.5	1.7	3.6
12	Miscellaneous Goods & Services	10.55	100.5	100.5	100.0	99.9	93.1	0.1	0.5	0.6	7.9
12.1	Personal Care	1.71	100.8	100.7	100.0	99.5	98.5	0.1	0.8	1.4	2.4
12.2	Personal Effects N.E.C.	1.24	100.3	100.0	100.0	99.1	98.3	0.2	0.3	1.2	2.0
12.3	Social Protection	0.07	100.0	100.0	100.0	100.0	83.2	0.0	0.0	0.0	20.2
12.4	Insurance	4.73	100.7	100.7	100.0	100.0	91.6	0.0	0.7	0.7	9.9
12.5	Financial Services	0.79	100.6	100.4	100.0	99.6	98.2	0.2	0.6	1.1	2.5
12.6	Taxes Licences, Fees	2.01	100.1	100.1	100.0	99.8	96.9	0.0	0.1	0.3	3.2
	All-Items Index	100.0	100.5	100.4	100.0	99.4	97.6	0.1	0.5	1.1	3.0

Consumer Price Index- December 2016

TABLE 3: COST-OF-LIVING INDEX BY TRADABILITY (September 2016 = 100.0)

	All Items		Non-Tradable		Domestic Tradable		Imported Tradable		All Tradable		
	Index	Inflation	Index	Inflation	Index	Inflation	Index	Inflation	Index	Inflation	
Weights	100.00		35.83		20.39		43.77		64.17		
2014	Jan	92.0	4.4	85.6	4.4	91.7	5.8	97.0	3.6	94.9	4.4
	Feb	92.4	4.6	85.7	4.5	92.8	6.9	97.1	3.5	95.4	4.8
	Mar	92.7	4.4	86.1	4.7	93.2	6.0	97.3	3.3	95.7	4.3
	Apr	93.5	4.5	87.7	5.7	93.7	5.1	97.6	3.4	96.1	4.1
	May	93.7	4.5	87.8	5.6	93.9	5.1	97.9	3.5	96.3	4.1
	Jun	94.0	4.6	88.3	5.8	94.0	5.4	98.1	3.4	96.5	4.1
	Jul	94.1	4.5	88.3	5.7	94.1	5.5	98.3	3.2	96.7	4.1
	Aug	94.3	4.6	88.5	5.8	94.2	5.4	98.7	3.4	97.0	4.1
	Sept	94.5	4.5	88.7	5.8	94.1	5.1	99.0	3.3	97.1	4.0
	Oct	94.6	4.3	88.7	5.5	94.2	5.0	99.2	3.3	97.3	3.9
	Nov	94.9	4.3	88.9	5.3	94.2	4.6	99.7	3.5	97.6	4.0
	Dec	94.6	3.8	89.2	5.4	94.2	4.3	98.9	2.4	97.1	3.1
2015	Jan	95.4	3.6	89.8	4.9	95.5	4.2	99.4	2.5	97.9	3.1
	Feb	95.0	2.8	90.0	5.1	96.0	3.4	98.0	0.9	97.2	1.9
	Mar	95.3	2.8	90.4	4.9	96.6	3.6	98.2	1.0	97.6	1.9
	Apr	96.4	3.1	93.0	6.1	96.9	3.5	98.5	0.9	97.9	1.9
	May	96.5	3.0	93.3	6.3	96.9	3.2	98.6	0.8	98.0	1.7
	Jun	96.9	3.1	94.3	6.9	96.9	3.0	98.7	0.6	98.0	1.5
	Jul	97.0	3.1	94.4	6.9	96.9	2.9	99.0	0.7	98.2	1.5
	Aug	97.2	3.0	94.5	6.8	97.0	2.9	99.3	0.6	98.4	1.4
	Sept	97.3	2.9	95.3	7.4	96.6	2.7	99.2	0.2	98.2	1.1
	Oct	97.6	3.1	95.4	7.5	97.3	3.3	99.3	0.2	98.3	1.1
	Nov	97.6	2.9	95.4	7.4	97.4	3.4	99.3	-0.4	98.6	1.0
	Dec	97.6	3.1	96.0	7.6	97.4	3.5	98.9	0.0	98.3	1.2
2016	Jan	97.9	2.7	96.3	7.3	98.0	2.6	99.1	-0.3	98.6	0.8
	Feb	97.9	3.0	96.4	7.0	98.4	2.5	98.8	0.7	98.6	1.4
	Mar	98.2	3.0	96.9	7.3	98.6	2.1	99.0	0.8	98.8	1.3
	Apr	99.1	2.8	98.7	6.1	99.1	2.3	99.4	0.9	99.3	1.4
	May	99.2	2.8	98.9	6.0	99.4	2.5	99.4	0.8	99.4	1.4
	Jun	99.4	2.7	99.4	5.4	99.3	2.5	99.6	0.9	99.5	1.5
	Jul	99.6	2.7	99.4	5.4	99.5	2.8	99.7	0.7	99.6	1.5
	Aug	99.7	2.6	99.5	5.3	99.9	3.0	99.9	0.6	99.9	1.5
	Sept	100.0	2.8	100.0	4.9	100.0	3.5	100.0	0.9	100.0	1.9
	Oct	100.2	2.7	100.1	4.9	100.3	3.1	100.2	0.9	100.2	1.9
	Nov	100.4	2.9	100.1	4.9	100.7	3.4	100.5	1.2	100.6	2.1
	Dec	100.5	3.0	100.2	4.3	100.9	3.6	100.6	1.8	100.7	2.5
% Change on last month		0.1		0.0		0.2		0.1		0.1	

Consumer Price Index- December 2016

TABLE 4: Core Inflation Rates by Exclusion and Trimmed Mean

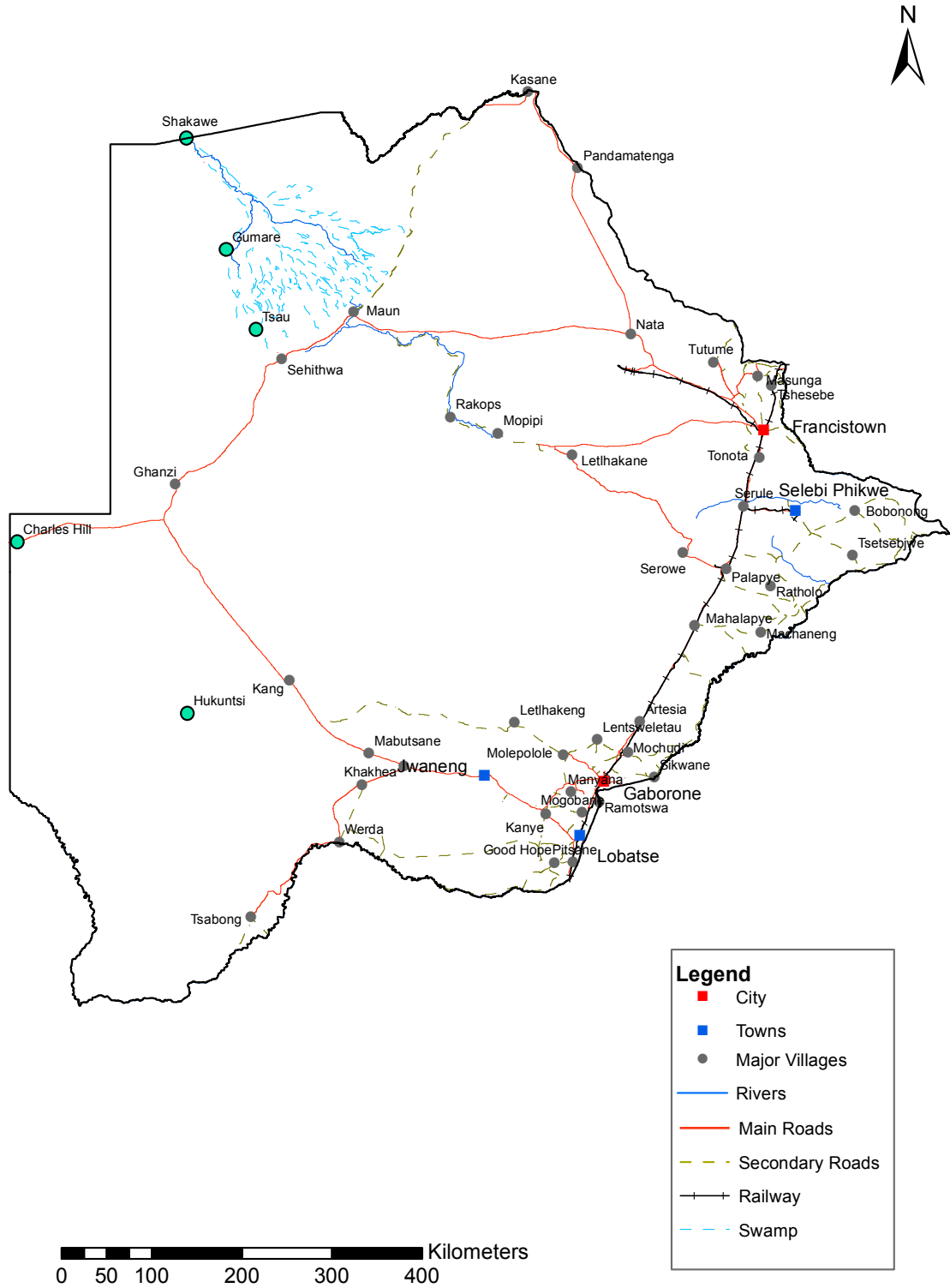
Year	Month	Consumer Price Index (Trimmed Mean) (September 2016 = 100)	Core Monthly Inflation Rate (Trimmed Mean) (percentage)	Consumer Price Index (Excluding Administered Prices) (September 2016 = 100)	Core Monthly Inflation (Excluding Administered Prices) (percentage)
2014					
	Jan	90.2	4.1	89.5	5.2
	Feb	90.0	4.1	90.0	5.5
	Mar	90.9	4.0	90.3	5.2
	Apr	90.8	4.1	90.9	5.2
	May	91.0	4.1	91.2	5.2
	Jun	92.2	4.2	91.5	5.3
	Jul	92.4	4.2	91.7	5.3
	Aug	92.2	4.2	92.0	5.3
	Sept	92.3	4.1	92.2	5.2
	Oct	92.9	4.0	92.3	5.1
	Nov	93.2	3.9	92.6	5.0
	Dec	91.6	3.7	92.9	4.9
2015					
	Jan	92.6	3.6	93.7	4.8
	Feb	92.7	3.2	94.3	4.8
	Mar	93.0	3.3	94.7	4.8
	Apr	95.5	3.6	95.3	4.8
	May	95.7	3.5	95.4	4.7
	Jun	96.1	3.6	95.8	4.7
	Jul	96.1	3.6	96.0	4.7
	Aug	96.4	3.5	96.2	4.6
	Sept	96.8	3.4	96.6	4.8
	Oct	97.1	3.6	96.9	5.0
	Nov	97.1	3.3	97.0	4.7
	Dec	97.0	3.2	97.1	4.5
2016					
	Jan	97.5	2.8	97.5	4.0
	Feb	97.7	2.6	97.8	3.7
	Mar	97.9	2.5	98.1	3.7
	Apr	98.5	2.4	98.9	3.9
	May	98.7	2.3	99.1	3.8
	Jun	98.7	2.4	99.3	3.6
	Jul	99.5	2.5	99.5	3.6
	Aug	99.7	2.4	99.7	3.6
	Sept	100.0	2.6	100.0	3.6
	Oct	100.2	2.2	100.2	3.4
	Nov	100.4	2.5	100.6	3.7
	Dec	100.5	2.5	100.7	3.7

Consumer Price Index- December 2016

Table 5: Average Annual Inflation (September 2016=100)

	Group	Weights	YEAR							
			2008	2009	2010	2011	2012	2013	2014	2015
1	Food & Non-Alcoholic Beverages	16.51	20.2	14.7	3.6	6.9	8.0	5.4	3.0	1.3
2	Alcoholic Beverages,Tobacco & Narcotics	7.83	13.2	35.2	7.1	8.4	7.6	10.3	9.0	6.1
3	Clothing and Footwear	6.27	2.0	8.4	8.0	8.9	7.5	6.3	6.0	7.6
4	Housing, Water, Electr. Gas & Other Fuels	14.90	8.1	4.8	6.4	8.4	7.7	4.3	3.9	7.1
5	Furnishing, H/H Equipment& Routine Maintenance	6.39	6.0	11.9	9.4	9.0	7.3	4.9	5.0	6.1
6	Health	3.62	11.3	5.5	2.7	4.5	5.9	5.5	8.3	6.3
7	Transport	20.65	21.2	(8.4)	12.1	13.2	10.8	7.3	1.2	(5.1)
8	Communication	4.27	(0.3)	(0.3)	1.2	(3.0)	(1.4)	0.3	0.3	0.3
9	Recreation & Culture	2.92	2.3	5.0	6.0	8.3	5.8	4.5	4.2	5.7
10	Education	3.34	3.9	3.9	5.8	10.6	6.4	4.7	7.4	6.4
11	Restaurants & Hotels	2.76	12.7	18.8	9.0	9.3	8.4	7.9	7.6	5.5
12	Miscellaneous Goods & Services	10.55	4.9	3.8	7.0	5.3	2.0	1.2	5.2	7.2
	All-Items Index	100.0	12.6	8.2	6.9	8.5	7.5	5.9	4.4	3.1

CPI AREA COVERAGE



Compiled and Prepared by Statistics Botswana, 2016

GLOSSARY

Consumer Price Index (CPI) is an index which measures price changes in goods and services with reference to a base period.

Inflation is a measurement of prices movement of goods and services in a particular country.

Domestic Tradable refers to the goods and services which a country (Botswana) can export to other countries.

Imported Tradable represents the goods and services which a country (Botswana) imports from other countries (trading partners).

Non-Tradable refers to the goods and services which a country cannot either export or import to other countries.

All –Tradable refers to the total of **Domestic** and **Imported tradable**.

Trimmed Mean Core Inflation- attempts to remove 8 percent (by weight) of the commodity sub-groups with the largest price changes at each of the ends of an ordered series of price changes in any given month.

Core inflation by Exclusion is a measure used to remove the volatility inherent in prices that are only adjusted periodically and not always in response to currently prevailing market forces.