

Statistics Botswana
Private Bag 0024, Gaborone, Botswana
Tel: (267) 3671300, Fax (267) 3952201,
Email: csobots@gov.bw, Website: www.cso.gov.bw

All correspondence should be addressed to Statistician General

CONSUMER PRICE STATISTICS – AUGUST 2012

CONTENTS

COMMENTARY

- 1. Section 1: Headline Inflation**
- 2. Section 2: Core Inflation**

CHARTS

- 1. National Rates of Inflation, January 2010 – August 2012**
- 2. Monthly Changes in the Cost-of-Living Index, January 2010 – August 2012**
- 3. Non-Tradeables Inflation Rates, January 2010 – August 2012**
- 4. Tradeables Inflation Rates, January 2010 - August 2012**

TABLES

- 1. Cost-of-Living Index Series (January 2010 – August 2012)**
- 2. National Cost-of-Living Group and Section Indices**
- 3. Cost-of-Living Index by Tradability (January 2010 – August 2012)**
- 4. Core Inflation Rates**

CONTACT STATISTICIAN: *PHALADI LABOBEDI*

PRICE STATISTICS UNIT, TEL: 3671300, EXT: 1360/61/77/97

EMAIL: plabobedi@gov.bw

“Figures that inform and help you make decisions”

COMMENTARY-AUGUST 2012 CONSUMER PRICE INDEX (CPI)

Section 1: Headline Inflation

In August 2012, national year-on-year inflation rate stood at 6.6 percent, down by 0.7 of a percentage point from 7.3 percent in July 2012. The cities and towns' inflation rate registered a drop of 0.9 of a percentage point, from 7.3 percent in July to 6.4 percent in August. The urban villages' inflation rate went down by 0.7 of a percentage point, from 7.6 percent in July to 6.9 percent in August. The rural villages' inflation rate stood at 6.6 percent in August, down by 0.5 of a percentage point on the July 2012 rate of 7.1 percent.

The August national Consumer Price Index was 160.8, registering an increase of 0.3 percent on the July index of 160.3. The urban villages' index went up from 159.5 to 160.2, recording an increase of 0.4 percent. The cities and towns' index rose by 0.2 percent, from 159.7 to 160.0 between July and August. In the same period, the rural villages' index moved from 163.2 to 163.6, an increase of 0.2 percent.

Group indices were stable between July and August, recording movements of less than 1.0 percent except for the *Clothing and Footwear* group index which recorded an increase of 1.0 percent.

The *Clothing and Footwear* group index registered an increase of 1.0 percent from 142.5 in July to 144.0 in August. All section indices recorded increases, notably, other *articles of Clothing* (2.6 percent), *Cleaning, Repair & Hire* (0.9 percent), *Footwear* (0.7 percent) and *Clothing* (0.5 percent).

The *Recreation & Culture* group index moved from 130.9 in July to 131.8 in August, recording an increase of 0.7 percent. The increase is attributed to the rise in the constituent section index of *Other Recreational Items & Equipment* (4.2 percent).

The *Food & Non-Alcoholic Beverages* index group moved from 180.4 to 181.0, registering an increase of 0.4 percent between July and August. The increase was attributed to the general increase in food prices.

The *Restaurants & Hotels* group index registered an increase of 0.4 percent from 195.3 in July to 196.1 in August. The increase was a result of the constituent section indices of *Restaurants, Caf  s and the Like* (0.4 percent) and *Accommodation Services* (0.6 percent).

The *All-Tradable* inflation rate for August stood at 7.3 percent, down by 0.8 of a percentage point on the July rate of 8.1 percent. The *Imported Tradable* inflation rate recorded a drop of 1.3 percentage points over the period, from 8.0 to 6.7 percent. The *Non-Tradable* inflation rate went down by 0.4 of a percentage point, from 5.2 percent in July to 4.8 percent in August, while the *Domestic Tradable* inflation rate for August stood at 8.2, the same rate as in July.

The *All-Tradable* index moved from 166.7 in July to 167.2 in August, an increase of 0.3 percent. The *Imported Tradable* index rose by 0.4 percent, from 160.5 in July to 161.1 in August. The *Non-Tradable* index went up by 0.3 percent, from 145.2 to 145.7 between the two months, while the *Domestic Tradable* index recorded an increase of 0.1 percent, from 179.0 in July to 179.3 in August.

Section 2: Core Inflation

The Trimmed Mean Core Inflation rate in August stood at 6.3 percent, dropping 0.5 of a percentage point from the July recording of 6.8 percent. The Core Inflation rate by exclusion, between July and August, went up by 0.1 of a percentage point, from 6.5 to 6.6 percent.

Chart 1: National Inflation Rate 2010 - 2012

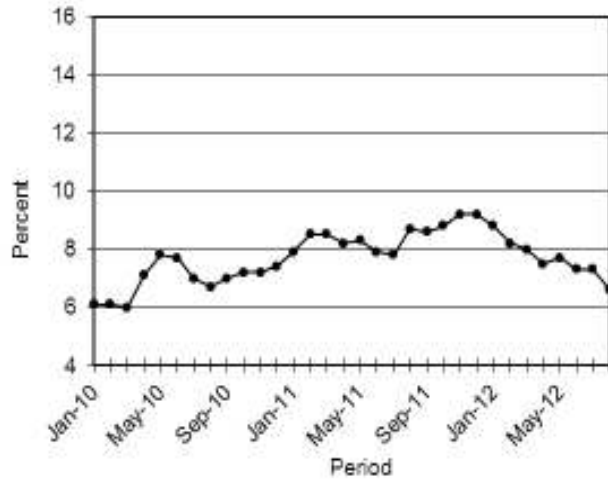


Chart 2: Monthly Changes in Cost-of-Living Index 2010 - 2012

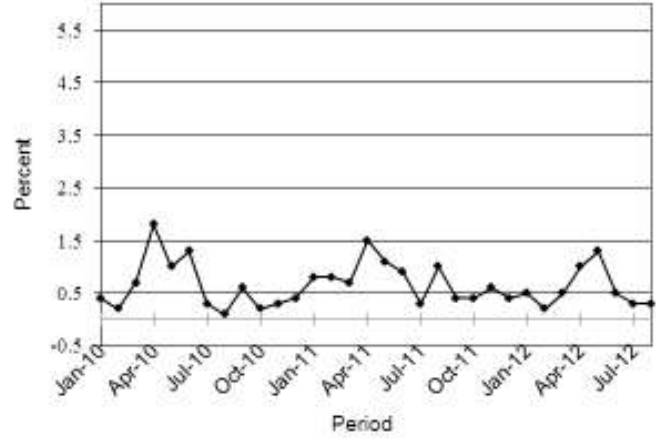


Chart 3: Non-Tradeable Inflation 2010 - 2012

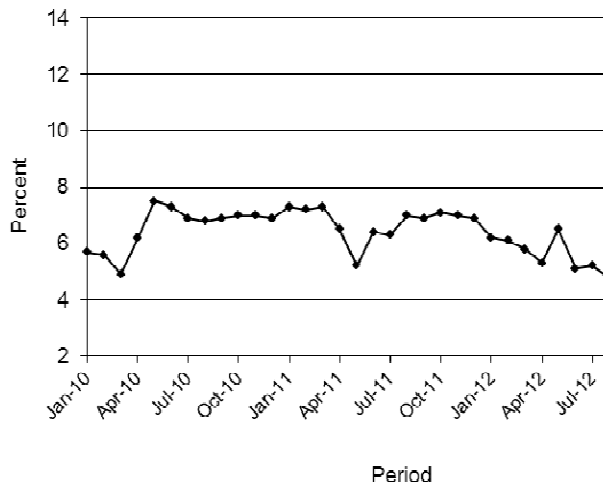
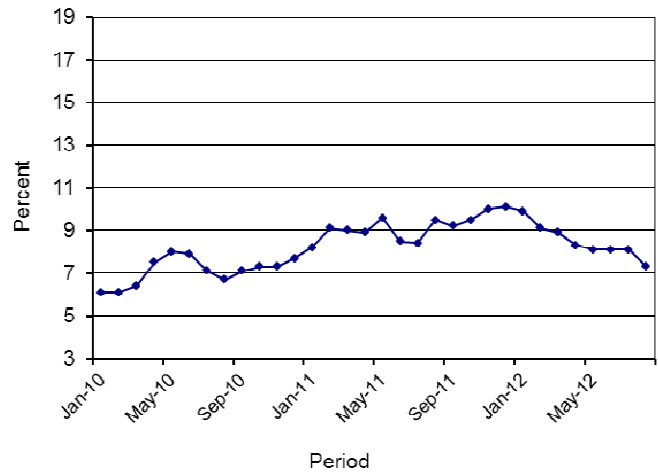


Chart 4: Tradeables Inflation 2010 - 2012



A.N. Majelantle
Acting Statistician General
14th September 2012

TABLE 1: COST OF LIVING INDEX (September 2006 =100.0)

		Food	Alcohol and Tobacco	Clothing and Footwear	Housing	Furni- ture etc	Health	Trans- port	Communi- cation	Rec. & Culture	Educatio- n	Rest. & Hotels	Other
Weights		21.84	9.29	7.52	11.46	6.76	2.71	18.98	3.01	2.22	3.37	3.27	9.57
(1)	(2)	(3)	(4)	(5)	(6)	(7)	(8)	(9)	(10)	(11)	(12)	(13)	(14)
2010	Jan	151.1	165.8	116.9	119.9	130.6	124.9	120.6	94.6	109.9	120.4	155.6	114.4
	Feb	151.1	166.0	117.3	120.0	131.2	125.2	121.0	94.6	110.3	120.4	156.5	114.6
	Mar	152.4	167.6	118.9	121.2	133.1	125.4	121.2	94.6	110.8	120.4	158.3	115.0
	Apr	154.4	174.1	119.9	121.8	134.3	127.3	123.4	95.4	111.1	120.4	162.7	119.5
	May	156.0	176.7	120.5	126.3	135.0	127.6	123.6	95.4	111.4	120.5	164.4	119.7
	Jun	156.1	177.4	121.4	126.8	137.1	127.8	130.2	96.4	111.5	120.5	165.9	120.8
	July	156.4	177.4	122.9	127.3	138.0	128.1	130.3	96.4	115.6	120.5	166.6	121.0
	Aug	156.8	177.6	123.6	127.5	138.5	128.2	129.6	96.4	115.8	120.5	167.5	121.1
	Sept	156.7	179.1	125.0	127.7	139.3	128.3	131.6	96.4	116.1	120.5	168.8	121.4
	Oct	156.7	179.7	126.3	127.9	139.6	128.4	131.7	96.4	116.5	120.5	170.6	121.5
	Nov	157.2	180.4	127.4	128.1	140.4	128.4	131.8	96.4	116.7	120.5	171.8	121.5
	Dec	157.6	182.1	127.1	128.8	141.7	128.6	132.2	96.4	116.9	120.5	171.9	121.7
2011	Jan	158.2	183.4	127.5	129.1	142.3	128.7	133.7	96.4	117.1	133.2	172.7	122.6
	Feb	159.1	183.9	127.9	129.4	142.9	128.8	137.5	96.4	117.6	133.2	172.9	122.6
	Mar	160.5	186.0	128.5	130.9	144.6	129.1	137.7	96.4	118.5	133.2	173.7	122.8
	Apr	164.4	188.5	131.0	131.1	145.3	133.0	139.0	96.4	123.4	133.2	175.5	125.7
	May	165.8	191.3	132.1	131.8	146.7	133.3	142.8	91.2	124.1	133.2	179.3	126.1
	Jun	166.6	191.9	133.1	137.6	148.9	133.6	143.3	91.2	124.4	133.2	182.5	126.6
	Jul	167.0	192.2	134.4	138.2	149.5	133.6	143.4	91.2	124.5	133.2	183.4	126.7
	Aug	167.9	192.4	135.1	138.9	150.4	133.7	148.7	91.2	124.7	133.2	183.7	126.8
	Sept	168.8	192.4	135.8	140.0	152.9	133.9	148.8	91.2	124.8	133.2	184.5	126.9
	Oct	169.8	192.8	136.4	140.6	153.9	136.0	149.4	91.2	125.3	133.2	184.6	127.1
	Nov	170.7	192.9	137.2	141.2	154.3	136.1	152.6	91.2	125.3	133.2	185.3	127.2
	Dec	171.8	192.8	138.8	141.8	155.2	136.4	152.6	91.2	125.4	133.2	186.0	127.2
2012	Jan	172.3	193.5	139.6	141.9	155.6	136.5	153.4	91.2	125.6	141.5	187.1	127.7
	Feb	173.3	193.6	140.2	142.0	155.9	136.9	153.5	91.2	125.7	141.5	187.5	127.7
	Mar	174.6	196.0	140.7	142.4	156.6	137.2	153.5	91.2	125.9	141.7	189.5	127.7
	Apr	177.0	201.2	140.9	142.4	157.5	141.0	153.8	91.7	130.2	141.7	192.7	128.2
	May	178.4	204.7	141.3	147.4	158.1	141.3	157.8	91.7	130.3	141.7	193.7	128.3
	Jun	179.6	205.2	141.9	148.6	160.1	141.5	158.2	91.7	130.4	141.7	194.9	128.4
	Jul	180.4	205.8	142.5	148.4	160.6	142.1	159.3	91.7	130.9	141.7	195.3	128.6
	Aug	181.0	206.1	144.0	148.4	161.2	142.3	159.9	91.7	131.8	141.7	196.1	128.2
% Change on Last month		0.4	0.2	1.0	(0.0)	0.4	0.1	0.4	0.0	0.7	0.0	0.4	(0.3)

TABLE 1: COST OF LIVING INDEX(Cont.)

	All Items Index	National Inflation Rate	Monthly Change	Towns & Cities Index	Urban Village Index	Rural Villages Index	Annual Inflation		
		%	%	47.33	33.76	18.91	Towns & Cities %	Urban Villages %	Rural %
2010 Jan	131.4	6.1	0.4	129.8	131.2	135.8	6.7	5.9	5.1
Feb	131.7	6.1	0.2	130.1	131.2	136.4	6.6	5.8	5.4
Mar	132.6	6.0	0.7	131.0	131.8	138.3	6.5	5.2	5.9
Apr	135.0	7.1	1.8	133.5	134.0	140.4	7.9	6.3	6.6
May	136.3	7.8	1.0	134.8	135.4	141.6	8.7	7.2	6.9
Jun	138.1	7.7	1.3	137.0	137.0	142.8	8.5	7.0	7.0
July	138.6	7.0	0.3	137.4	137.6	143.2	7.9	6.4	6.2
Aug	138.7	6.7	0.1	137.8	137.6	142.7	7.7	5.9	5.6
Sept	139.4	7.0	0.6	138.6	138.7	143.0	8.0	6.4	5.6
Oct	139.7	7.2	0.2	138.8	139.1	143.0	8.0	6.8	5.9
Nov	140.1	7.2	0.3	139.5	139.3	143.2	8.2	6.7	5.4
Dec	140.6	7.4	0.4	139.8	139.9	144.0	8.1	7.2	6.2
2011 Jan	141.8	7.9	0.8	141.3	141.0	144.5	8.8	7.5	6.4
Feb	142.9	8.5	0.8	142.4	142.2	145.5	9.5	8.4	6.6
Mar	143.8	8.5	0.7	143.2	143.2	146.6	9.3	8.7	6.0
Apr	146.0	8.2	1.5	145.3	145.5	148.8	8.9	8.5	6.0
May	147.6	8.3	1.1	146.9	146.9	150.5	9.0	8.5	6.2
Jun	149.0	7.9	0.9	148.4	148.1	152.0	8.3	8.1	6.4
Jul	149.3	7.8	0.3	148.9	148.3	152.3	8.4	7.7	6.3
Aug	150.8	8.7	1.0	150.4	149.8	153.4	9.1	8.9	7.5
Sept	151.4	8.6	0.4	150.9	150.6	153.9	8.9	8.6	7.6
Oct	152.0	8.8	0.4	151.4	151.5	154.6	9.0	8.9	8.1
Nov	153.0	9.2	0.6	152.4	152.7	155.0	9.3	9.6	8.2
Dec	153.5	9.2	0.4	152.9	153.1	155.9	9.4	9.4	8.3
2012 Jan	154.3	8.8	0.5	153.5	154.0	157.0	8.6	9.2	8.6
Feb	154.7	8.2	0.2	153.7	154.4	157.6	8.0	8.6	8.3
Mar	155.4	8.0	0.5	154.3	155.1	158.6	7.8	8.3	8.2
Apr	156.9	7.5	1.0	156.0	156.6	159.8	7.3	7.7	7.4
May	159.0	7.7	1.3	158.6	158.2	161.3	8.0	7.7	7.2
Jun	159.8	7.3	0.5	159.3	158.9	162.5	7.4	7.3	6.9
Jul	160.3	7.3	0.3	159.7	159.5	163.2	7.3	7.6	7.1
Aug	160.8	6.6	0.3	160.0	160.2	163.6	6.4	6.9	6.6
% Change on last month	0.3			0.2	0.4	0.2			

Table 2: National Cost-of-Living Group & Section Indices (September 2006 = 100.0)

Group Section	Weights	This	Last	3 months	6 months	12 months	Percentage Change on:			
		month Aug 2012	month Jul 2012	ago May 2012	ago Feb 2012	ago Aug 2011	Last month	3 months ago	6 months ago	12 months ago
1 Food & Non-Alcoholic Beverages	21.84	181.0	180.4	178.4	173.3	167.9	0.4	1.5	4.4	7.8
1.1 Bread & Cereals	6.51	180.4	180.2	177.3	169.3	161.4	0.1	1.7	6.5	11.7
1.2 Meat (Fresh, Chilled & Frozen)	3.15	184.3	184.0	183.5	179.4	174.7	0.2	0.4	2.7	5.5
1.3 Fish (Fresh, Chilled & Frozen)	0.20	180.9	179.9	176.8	171.7	169.7	0.6	2.3	5.4	6.6
1.4 Milk, Cheese & Milk Products	2.19	183.1	182.5	180.4	178.7	177.5	0.3	1.5	2.5	3.1
1.5 Oils & Fats	0.90	216.9	216.5	213.8	211.8	205.6	0.2	1.5	2.4	5.5
1.6 Fruit	0.67	128.0	126.1	125.3	123.5	114.5	1.6	2.2	3.7	11.8
1.7 Vegetables	1.94	179.3	177.9	175.2	170.8	169.5	0.7	2.4	4.9	5.8
1.8 Sugar, Jam, Honey, Chocolate & Confectionery	1.36	185.3	184.2	183.0	177.1	169.5	0.6	1.3	4.7	9.3
1.9 Food not else where Classified	2.36	180.8	179.7	178.6	175.7	171.4	0.6	1.2	2.9	5.5
1.10 Coffee, Tea & Cocoa	0.63	201.7	201.8	197.0	193.1	186.5	(0.1)	2.4	4.4	8.2
1.11 Mineral Waters, Soft Drinks, Fruits & Veg. Juices	1.94	169.6	168.5	167.2	161.0	155.8	0.7	1.4	5.3	8.9
2 Alcoholic Beverages, Tobacco & Narcotics	9.29	206.1	205.8	204.7	193.6	192.4	0.2	0.7	6.5	7.1
2.1 Alcoholic Beverages	8.09	205.9	205.7	204.7	193.3	192.3	0.1	0.6	6.5	7.1
2.2 Tobacco	1.20	208.0	206.8	204.8	195.7	193.2	0.6	1.6	6.3	7.7
3 Clothing and Footwear	7.52	144.0	142.5	141.3	140.2	135.1	1.0	1.9	2.7	6.6
3.1 Clothing	3.33	162.7	161.9	160.9	159.8	153.1	0.5	1.1	1.8	6.3
3.2 Other articles of Clothing	1.82	130.7	127.4	126.7	125.8	119.5	2.6	3.1	3.9	9.4
3.3 Cleaning, Repair & Hire	0.03	179.0	177.4	173.7	169.8	163.0	0.9	3.0	5.4	9.8
3.4 Footwear	2.34	127.2	126.2	124.3	123.1	121.1	0.7	2.3	3.3	5.0
4 Housing, Water, Electr. Gas & Other Fuels	11.46	148.4	148.4	147.4	142.0	138.9	(0.0)	0.7	4.5	6.8
4.1 Rent paid by Tenants	5.68	130.8	130.8	128.4	127.7	125.1	0.0	1.9	2.4	4.6
4.2 Materials for Maintenance & Repair of dwellings	2.57	143.5	142.4	142.0	141.2	137.6	0.8	1.1	1.6	4.3
4.3 Water Supply & Misc. Services	1.14	151.4	151.4	151.4	102.2	102.2	0.0	0.0	48.2	48.2
4.4 Electricity Gas and other Fuels	2.06	201.0	202.6	204.0	204.0	199.1	(0.8)	(1.4)	(1.5)	0.9
5 Furnishing, H/H Equipment & Routine Maintenance	6.76	161.2	160.6	158.1	155.9	150.4	0.4	1.9	3.4	7.1
5.1 Furniture & Furnishing	2.31	135.9	134.6	134.0	131.5	127.4	1.0	1.5	3.4	6.7
5.2 Carpets & Other Floor Coverings	0.04	147.8	147.2	146.6	145.8	143.0	0.4	0.8	1.3	3.3
5.3 Household Textiles	0.44	149.5	149.0	147.6	145.5	141.4	0.3	1.3	2.8	5.7
5.4 Household Appliances	0.69	136.4	135.9	134.3	132.7	129.4	0.4	1.6	2.8	5.4
5.5 Glassware, Tableware & Household Utensils	0.44	168.7	168.7	162.8	160.7	156.2	0.0	3.6	5.0	8.0
5.6 Small Tools, Miscellaneous Accessories	0.06	167.4	167.0	166.7	165.4	162.2	0.2	0.4	1.2	3.2
5.7 Goods & Services for H/hold Maintenance	2.79	188.8	188.7	184.9	182.6	175.0	0.1	2.1	3.4	7.9

Table 2: National Cost-of-Living Group & Section Indices (September 2006 = 100.0) (Cont.)

6 Health	2.71	142.3	142.1	141.3	136.9	133.7	0.1	0.7	3.9	6.4
6.1 Medical Products, App. & Equip.	0.35	165.9	164.4	162.0	155.0	145.6	0.9	2.4	7.1	13.9
6.2 Out-patient Services	0.66	148.0	148.0	145.9	133.0	124.8	0.0	1.5	11.3	18.6
6.3 Hospital Services	1.71	135.3	135.3	135.3	134.7	134.7	0.0	0.0	0.4	0.4
7 Transport	18.98	159.9	159.3	157.8	153.5	148.7	0.4	1.4	4.2	7.6
7.1 Purchase of Vehicles	5.89	150.9	150.9	148.9	148.8	146.4	0.0	1.3	1.4	3.0
7.2 Operation of Personal Transport	10.92	164.6	163.5	161.9	154.5	147.6	0.7	1.6	6.5	11.5
7.3 Transport Services	2.17	161.1	160.9	160.9	160.9	160.3	0.1	0.1	0.1	0.5
8 Communication	3.01	91.7	91.7	91.7	91.2	91.2	0.0	0.0	0.6	0.6
8.1 Postal Services	0.04	209.9	209.9	209.9	170.8	170.8	0.0	0.0	22.9	22.9
8.2 Telephone & Telefax Equipment	0.74	66.6	66.6	66.6	66.6	66.6	0.0	0.0	0.0	0.0
8.3 Telephone & Telefax Services	2.23	98.0	97.9	97.9	97.9	97.9	0.0	0.0	0.0	0.0
9 Recreation & Culture	2.22	131.8	130.9	130.3	125.7	124.7	0.7	1.1	4.8	5.7
9.1 Audio Visual, Photographic & Info. Proce. Equip.	1.09	104.7	104.5	103.6	102.6	102.6	0.2	1.1	2.0	2.1
9.2 Other Recreational Items & Equip.	0.18	156.5	150.2	150.6	150.1	146.5	4.2	3.9	4.3	6.8
9.3 Recreational & Cultural Services	0.76	148.9	148.4	148.4	137.4	137.0	0.4	0.4	8.3	8.7
9.4 Newspapers, Books & Stationary	0.19	192.9	191.4	190.1	186.1	180.2	0.8	1.4	3.6	7.1
10 Education	3.37	141.7	141.7	141.7	141.5	133.2	0.0	0.0	0.1	6.4
10.1 Pre-Primary & Primary Education	1.10	173.5	173.5	173.5	173.0	154.5	0.0	0.0	0.3	12.3
10.2 Secondary & Tertiary Education	2.26	126.2	126.2	126.2	126.2	122.8	0.0	0.0	0.0	2.8
11 Restaurants & Hotels	3.27	196.1	195.3	193.7	187.5	183.7	0.4	1.3	4.6	6.8
11.1 Restaurants, Cafes and the Like	3.08	198.5	197.7	196.1	189.8	186.1	0.4	1.2	4.6	6.7
11.2 Accommodation Services	0.19	156.4	155.4	153.7	149.8	143.4	0.6	1.7	4.4	9.0
12 Miscellaneous Goods & Services	9.57	128.2	128.6	128.3	127.7	126.8	(0.3)	(0.1)	0.4	1.1
12.1 Personal Care	0.66	152.3	151.8	149.2	147.1	143.9	0.3	2.0	3.5	5.8
12.2 Personal Effects N.E.C.	0.04	131.2	127.9	127.2	126.4	118.9	2.6	3.2	3.8	10.3
12.3 Social Protection	0.14	147.8	147.8	147.8	146.8	146.8	0.0	0.0	0.7	0.7
12.4 Insurance	6.32	128.9	129.6	129.6	129.6	128.9	(0.6)	(0.6)	(0.6)	(0.0)
12.5 Financial Services	0.18	142.4	142.0	139.7	137.7	133.9	0.3	1.9	3.4	6.4
12.6 Taxes Licences, Fees	2.24	116.6	116.6	116.3	114.7	113.9	0.1	0.3	1.7	2.4
All-Items Index	100.0	160.8	160.3	159.0	154.7	150.8	0.3	1.1	3.9	6.6

TABLE 3: COST-OF-LIVING INDEX BY TRADEABILITY (September 2006 = 100.0)

Weights	All Items		Non-Tradeables		Domestic Tradeables		Imported Tradeables		All Tradeables	
	Index	Inflation	Index	Inflation	Index	Inflation	Index	Inflation	Index	Inflation
	100.00		30.92		23.91		45.17		69.08	
2010 Jan	131.4	6.1	123.8	5.7	149.3	3.0	127.2	8.5	134.6	6.1
Feb	131.7	6.1	124.0	5.6	149.5	2.2	127.4	9.0	134.9	6.1
Mar	132.6	6.0	124.6	4.9	150.5	2.0	128.7	9.3	136.0	6.4
Apr	135.0	7.1	126.9	6.2	153.7	3.5	130.6	10.1	138.3	7.5
May	136.3	7.8	128.7	7.5	154.9	4.2	131.7	10.4	139.5	8.0
Jun	138.1	7.7	129.7	7.3	154.8	4.2	135.1	10.3	141.6	7.9
July	138.6	7.0	129.9	6.9	155.3	3.8	135.7	9.2	142.2	7.1
Aug	138.7	6.7	130.0	6.8	155.3	3.8	135.9	8.5	142.4	6.7
Sept	139.4	7.0	130.9	6.9	155.5	4.3	136.8	8.8	143.1	7.1
Oct	139.7	7.2	131.0	7.0	155.6	4.3	137.3	9.1	143.4	7.3
Nov	140.1	7.2	131.2	7.0	155.9	4.3	137.9	9.0	144.0	7.3
Dec	140.6	7.4	131.6	6.9	156.5	5.0	138.4	9.3	144.5	7.7
2011 Jan	141.8	7.9	132.8	7.3	158.2	5.9	139.2	9.5	145.6	8.2
Feb	142.9	8.5	132.9	7.2	158.9	6.2	141.3	10.9	147.2	9.1
Mar	143.8	8.5	133.7	7.3	160.1	6.4	142.2	10.5	148.2	9.0
Apr	146.0	8.2	135.2	6.5	162.2	5.5	144.8	10.9	150.6	8.9
May	147.6	8.3	135.3	5.2	163.5	5.5	147.6	12.1	152.9	9.6
Jun	149.0	7.9	138.0	6.4	164.8	6.5	148.1	9.6	153.6	8.5
Jul	149.3	7.8	138.0	6.3	165.4	6.5	148.6	9.5	154.2	8.4
Aug	150.8	8.7	139.0	7.0	165.7	6.7	150.9	11.1	155.8	9.5
Sept	151.4	8.6	139.9	6.9	166.3	6.9	151.3	10.6	156.3	9.2
Oct	152.0	8.8	140.3	7.1	167.0	7.4	152.1	10.8	157.0	9.5
Nov	153.0	9.2	140.4	7.0	167.5	7.4	153.9	11.6	158.4	10.0
Dec	153.5	9.2	140.7	6.9	168.0	7.4	154.6	11.8	159.1	10.1
2012 Jan	154.3	8.8	141.1	6.2	169.6	7.2	155.3	11.5	160.0	9.9
Feb	154.7	8.2	141.0	6.1	170.4	7.3	155.7	10.2	160.6	9.1
Mar	155.4	8.0	141.4	5.8	172.2	7.6	156.1	9.8	161.4	8.9
Apr	156.9	7.5	142.4	5.3	176.0	8.5	156.7	8.2	163.2	8.3
May	159.0	7.7	144.2	6.5	178.0	8.9	158.9	7.7	165.3	8.1
Jun	159.8	7.3	145.0	5.1	178.7	8.4	159.7	7.8	166.0	8.1
Jul	160.3	7.3	145.2	5.2	179.0	8.2	160.5	8.0	166.7	8.1
Aug	160.8	6.6	145.7	4.8	179.3	8.2	161.1	6.7	167.2	7.3
% Change on last month	0.3		0.3		0.1		0.4		0.3	

TABLE 4: Core Inflation Rates by Exclusion and Trimmed Mean

Year	Month	Consumer Price Index (Trimmed Mean) (September 2006 = 100)	Core Monthly Inflation Rate (Trimmed Mean) (percentage)	Consumer Price Index (Excluding Administered Prices) (September 2006 = 100)	Core Monthly Inflation (Excluding Administered Prices) (percentage)
2010					
	Jan	129.7	6.7	135.2	5.9
	Feb	129.0	6.7	135.5	5.8
	Mar	130.0	6.5	136.7	5.6
	Apr	133.1	7.7	139.1	6.8
	May	133.2	8.3	140.2	7.2
	Jun	135.0	8.1	141.0	6.9
	July	136.6	7.6	141.5	6.1
	Aug	135.4	7.2	142.0	6.3
	Sept	136.8	7.4	142.7	6.5
	Oct	137.2	7.6	143.1	6.8
	Nov	137.9	7.6	143.6	6.7
	Dec	137.5	7.7	144.2	7.1
2011					
	Jan	139.6	8.0	145.5	7.6
	Feb	142.1	8.6	146.0	7.7
	Mar	142.6	8.4	147.1	7.6
	Apr	143.4	8.0	149.4	7.4
	May	148.7	8.2	150.5	7.3
	Jun	148.8	7.6	151.4	7.4
	July	150.3	7.4	151.9	7.3
	Aug	153.7	8.4	152.5	7.4
	Sept	154.8	8.1	153.2	7.4
	Oct	155.6	8.3	154.0	7.6
	Nov	156.3	8.5	154.4	7.5
	Dec	156.9	8.5	155.1	7.5
2012					
	Jan	157.9	8.1	156.0	7.2
	Feb	158.0	7.8	156.5	7.2
	Mar	159.2	7.6	157.4	7.0
	Apr	158.9	7.3	159.2	6.6
	May	160.7	7.3	160.2	6.5
	Jun	163.9	6.8	161.2	6.4
	Jul	164.5	6.8	161.8	6.5
	Aug	164.0	6.3	162.5	6.6

Prices Collection Coverage for Botswana Consumer Price Index (CPI) - 2012

