



Stats Brief

Released by Statistics Botswana

Private Bag 0024, Gaborone, Botswana

Tel. 3671300, Fax 3952201 / 3956087

Email: csobots@gov.bw

Website: www.cso.gov.bw

All correspondence should be addressed to the Statistician General

No. 2013/01

January, 2013

BOTSWANA TRANSPORT AND INFRASTRUCTURE STATISTICS - 2012

1. Introduction

This Stats Brief presents a summary of the latest available Transport and Infrastructure Statistics for the period, January to September 2012. More detailed statistics will be available in the Transport and Infrastructure Statistics 2012 report to be released in 2013. All data is based on calendar year.

2. Air Transport

This section deals with movement of aircrafts and air passengers both locally and internationally.

2.1 Aircraft Movement

Table 2.1 below shows monthly movements of aircrafts from January to September of 2011 and 2012. Total aircraft movements registered in the first nine months of 2012 stood at 60,773, a decrease of 2.3% from the total of 62,178 registered in 2011.

Table 2.1: Aircraft Movement by Month and Type of Movement, 2011 - 2012

Month	2011			2012		
	International	Local	Total	International	Local	Total
January	1,226	4,111	5,337	1,178	3,890	5,068
February	1,235	2,929	4,164	1,183	3,413	4,596
March	1,675	4,154	5,829	1,357	4,297	5,654
April	1,652	6,060	7,712	1,389	5,660	7,049
May	1,842	4,861	6,703	1,592	5,395	6,987
June	2,000	5,045	7,045	1,657	5,336	6,993
July	1,943	7,302	9,245	1,749	6,926	8,675
August	1,979	6,468	8,447	1,738	6,686	8,424
September	1,874	5,822	7,696	1,621	5,706	7,327
Total	15,426	46,752	62,178	13,464	47,309	60,773

Source: Civil Aviation Authority of Botswana

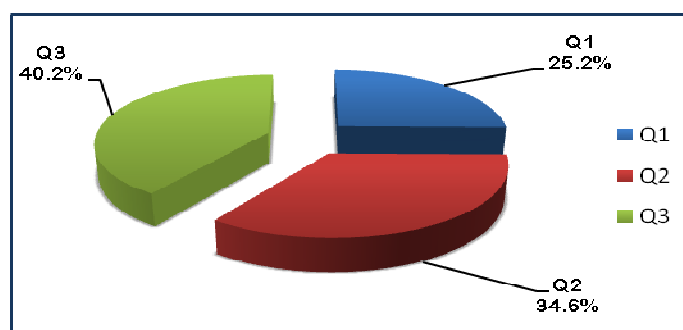
There has been a decrease in the number of both international and local aircraft movement in the first three quarters of 2012 when compared to the same period in 2011. In 2012, the third quarter accounted for the highest number of movements (40.2 percent) within this period. This is shown by **Table 2.2** and **Figure 2.1** below which show quarterly aircraft movements for the first three quarters of 2011 and 2012.

Table 2.2: Aircraft Movement by Quarter and Type of Movement, 2011 - 2012

Quarter	2011			2012		
	International	Local	Total	International	Local	Total
Quarter 1	4,136	11194	15,330	3,718	11,600	15,318
Quarter 2	5,494	15966	21,460	4,638	16,391	21,029
Quarter 3	5,796	19592	25,388	5,108	19,318	24,426
Total	15,426	46,752	62,178	13,464	47,309	60,773

Source: Civil Aviation Authority of Botswana

Figure 2.1: Aircraft Movements, Q1 – Q3 2012



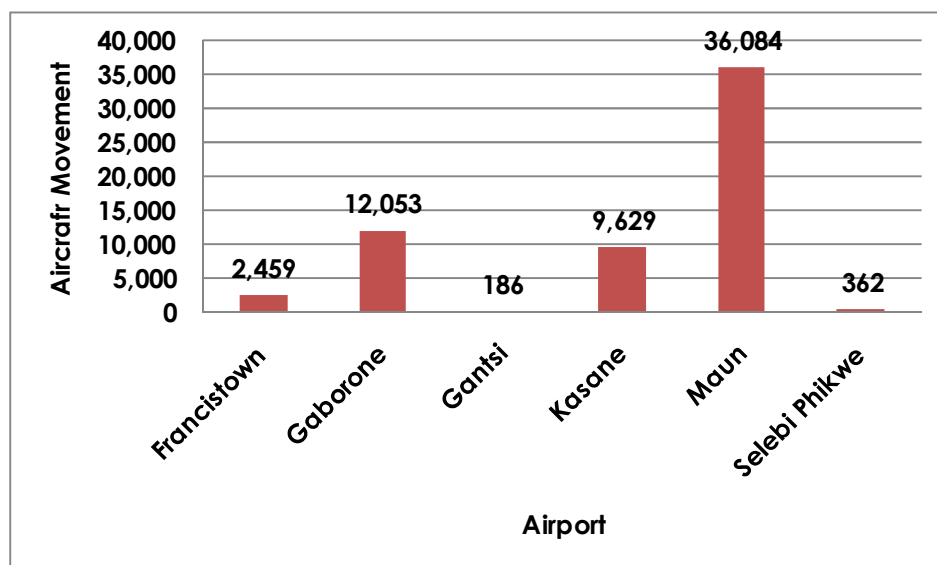
Maun airport was the busiest as it accounted for 59.4 percent of all aircrafts movements which occurred from January 2012 to September 2012. Gantsi had the least number of movements. This is shown by **Table 2.3** and **Figure 2.2** below

Table 2.3: Aircraft Movement by Airport and Type, January - September 2012

Airport	International Movements	Local Movements	Total Movements
Francistown	718	1,741	2,459
Gaborone	7,769	4,284	12,053
Gantsi	-	186	186
Kasane	2,097	7,532	9,629
Maun	2,680	33,404	36,084
Selebi Phikwe	200	162	362
Total	13,464	47,309	60,773

Source: Civil Aviation Authority of Botswana

Figure 2.2: Aircraft Movement by Airport, 2012



2.2 Air Passenger Movement

Total air passengers carried in the first months of 2012 reduced from the total recorded in the same period in 2011. They decreased by 2.8% from 587,304 in 2011 to 570,944 in 2012. In 2012, the highest movement of air passengers occurred in August for both international (37,738) and local (36,984) passengers. See **Table 2.4** and **Figure 2.3** below

Table 2.4: Air Passenger Movement by Month and Type, January - September 2011 & 2012

Month	2011			2012		
	International	Local	Total	International	Local	Total
January	29,016	22,091	51,107	27,337	24,906	52,243
February	27,035	22,719	49,754	27,288	24,163	51,451
March	34,396	29,273	63,669	32,539	27,949	60,488
April	35,222	33,597	68,819	31,304	30,138	61,442
May	35,921	29,849	65,770	33,489	31,978	65,467
June	35,364	31,063	66,427	34,064	32,248	66,312
July	37,585	36,763	74,348	35,130	35,073	70,203
August	39,076	37,692	76,768	37,738	36,984	74,722
September	36,798	33,844	70,642	36,598	32,018	68,616
Total	310,413	276,891	587,304	295,487	275,457	570,944

Source: Civil Aviation Authority of Botswana

Figure 2.3: Air Passenger Movement by Month and Type, 2012

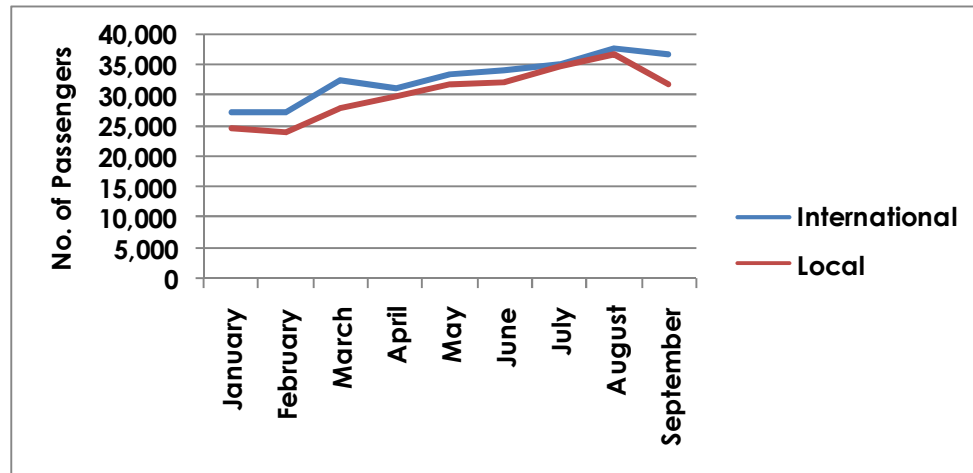


Table 2.5: Air Passenger Movement by Quarter and Type of Movement, 2011 - 2012

Quarter	2011			2012		
	International	Local	Total	International	Local	Total
Quarter 1	90,447	74,083	164,530	87,164	77,018	164,182
Quarter 2	106,507	94,509	201,016	98,857	94,364	193,221
Quarter 3	113,459	108,299	221,758	109,466	104,075	213,541
Total	310,413	276,891	587,304	295,487	275,457	570,944

Source: Civil Aviation Authority of Botswana

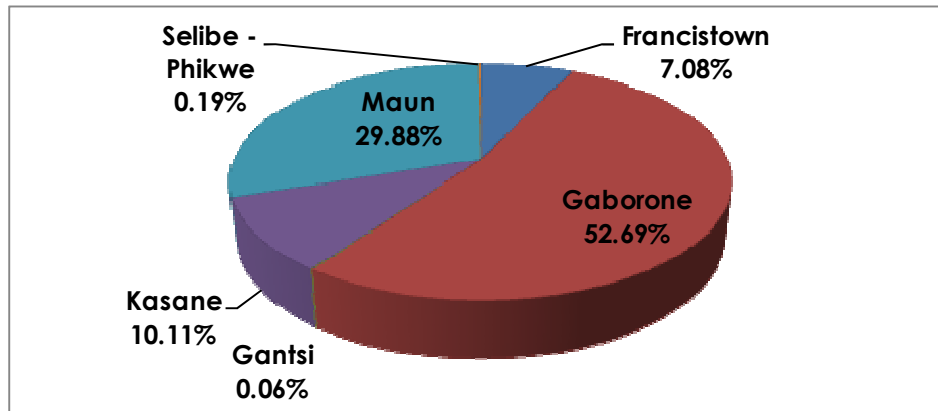
Gaborone airport recorded the highest number of air passengers during Q1 – Q3 2012. It constituted 52.7 percent of all passenger movements and these were mostly international. Maun airport was the second busiest since it accounted for 29.9 percent. Majority of passengers using Maun airport were going locally. Gantsi airport recorded the least number of passengers (0.06%). See Table 2.6 and Figure 2.4 below

Table 2.6: Air Passenger Movement by Airport , January - September 2012

Airport	International Movements	Local Movements	Total Movements
Francistown	7,052	33,386	40,438
Gaborone	225,561	75,249	300,810
Gantsi	-	322	322
Kasane	11,734	45,970	57,704
Maun	50,622	119,957	170,579
S/ Phikwe	518	573	1,091
Total	295,487	275,457	570,944

Source: Civil Aviation Authority of Botswana

Figure 2.4: The Distribution of Air Passengers by Airport, January – September 2012



3. Motor Vehicle Registrations

This part considers licensing of motor vehicles with respect to those registered for the first time and renewals of licenses of pre existing ones.

3.1. Motor Vehicle First Registrations

This section covers vehicles that were only registered for the first time. It could either be new or pre-used vehicles.

A substantial number of vehicles were registered in the first two quarters of 2012 than in the first two quarters of 2011. In this category, passenger cars constituted 83.0 percent of all first registrations followed by Light Duty Vehicles (LDVs). See Table 3.1 below

Table 3.1: First Registrations by Month and Type of Vehicle, 2012

Month	2012											2011 Total
	Passenger			Mini		Motor			Tankers/			
	Cars	LDVs	Trucks	Buses	Buses	Cycles	Tractors	Trailors	Horses	Others		
Jan	1,938	235	169	54	8	16	65	117	29	22	2,653	2,398
Feb	2,055	321	213	85	5	30	52	139	27	17	2,944	2,622
Mar	2,257	415	189	95	10	25	48	171	35	15	3,260	3,329
Apr	2,278	372	190	71	8	15	36	153	53	34	3,210	2,662
May	2,548	360	253	125	10	21	46	146	30	25	3,564	2,916
Jun	2,768	329	246	87	15	12	54	198	34	14	3,757	2,762
Total	13,844	2,032	1,260	517	56	119	301	924	208	127	19,388	16,689

Source: Department of Road Transport and Safety

Note: LDV = Light Duty Vehicles

3.2 Motor Vehicle Renewals by Month

Table 3.2 below shows that licenses for 155, 757 vehicles were renewed in the first two quarters of 2012. Vehicle licenses renewals have increased by 8.84 percent when compared to the same period in 2011.

Table 3.2: Renewals by Month and Type of Vehicle , 2012

Month	2012										2011 Total	
	Passenger		Trucks	Mini		Motor		Tankers/				Total
	Cars	LDVs		Buses	Buses	Cycles	Tractors	Trailors	Horses	Others		
Jan	10,914	5,737	1,603	714	56	94	339	1,017	16	782	21,272	19,691
Feb	12,640	7,230	1,887	879	74	111	293	1,185	36	801	25,136	22,980
Mar	13,788	7,631	1,871	933	124	125	275	1,220	33	911	26,911	26,793
Apr	14,440	7,417	1,652	827	87	94	247	1,209	209	177	26,359	23,501
May	15,538	7,951	1,836	960	115	125	254	1,398	238	253	28,668	26,391
Jun	15,028	7,586	1,691	842	106	126	281	1,354	195	202	27,411	23,745
Total	82,348	43,552	10,540	5,155	562	675	1,689	7,383	727	3,126	155,757	143,101

Source: Department of Road Transport and Safety

Note: LDV = Light Duty Vehicles

4. Rail Statistics

This part looks at the quantity of goods (in net tonnes) carried by rail and revenue generated from the conveyance of such goods. The data covers the first nine months of 2012 (January to September 2012).

4.1. Goods Traffic

The goods are in four (4) categories; goods coming into Botswana as imports, goods leaving the country as exports, goods moving within the country and finally goods passing through Botswana in transit to other countries.

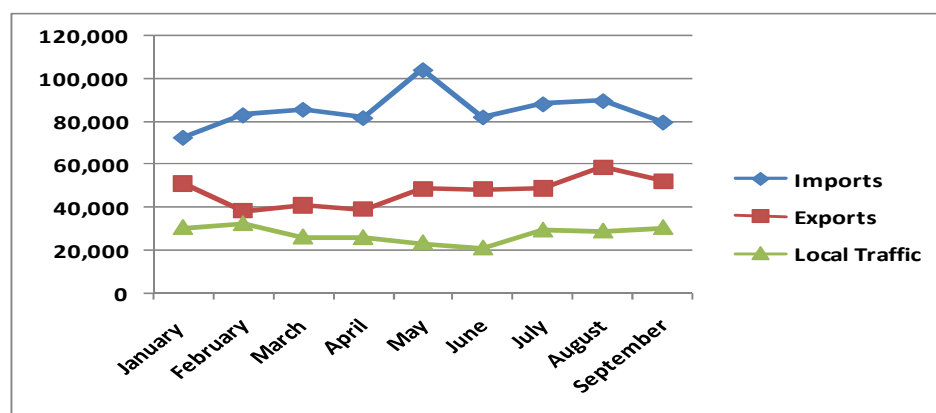
Table 4.1 below shows goods transported by rail in 2011 and 2012. Total goods traffic decreased by 2.78% in the first three quarters of 2012; from 1,544,364 recorded during January - September 2011 to 1,501,378 registered during the same period in 2012.

**Table 4.1: Rail Goods Traffic, Imports, and Exports (Net Tonnes) by Month
January - September 2011 & 2012**

Months	2012				2011	
	Total Imports	Total Exports	Local Traffic	Transit Traffic	Total Traffic	Total Traffic
January	72,478	51,224	30,728	13,000	167,430	161,844
February	83,006	38,361	32,535	7,000	160,902	178,901
March	85,677	40,869	26,313	9,000	161,859	185,291
April	81,678	39,336	25,983	7,000	153,997	144,295
May	104,179	48,797	23,562	1,000	177,538	191,694
June	82,080	48,384	21,103	3,000	154,567	170,825
July	88,202	48,940	29,509	2,000	168,651	163,730
August	89,700	58,853	29,058	11,000	188,611	167,328
September	79,684	52,438	30,701	5,000	167,823	180,456
Total	766,684	427,202	249,492	58,000	1,501,378	1,544,364

Source: Botswana Railways

**Figure 4.1: Rail Goods Traffic, Imports and Exports (Net tonnes) by Month:
January to September 2012**



4.2. Revenue

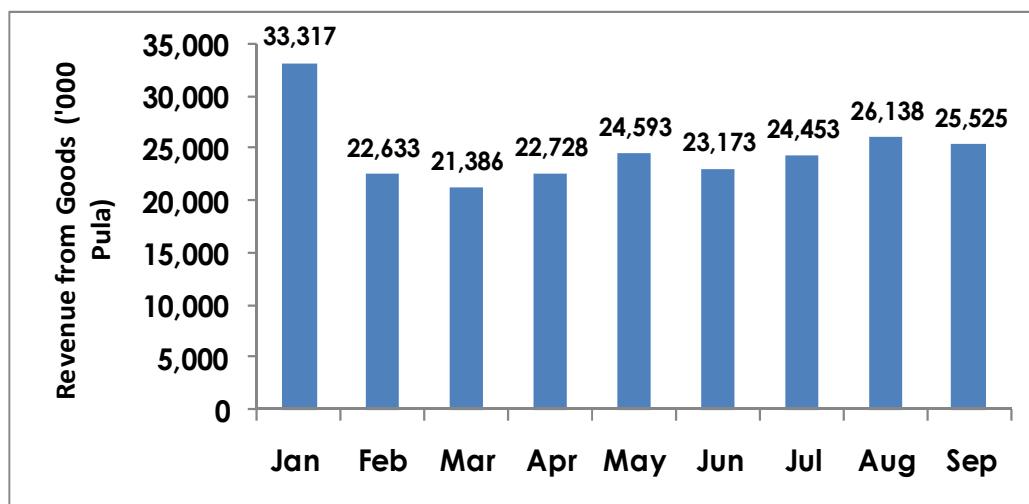
Table 4.2 below shows revenue (in '000 Pula) generated from goods transported by rail from January to September 2012. The highest revenue from goods was recorded in January 2012, constituting 14.9 % (33,317) of the total traffic recorded within the period under review. See also **Figure 4.2**

Table 4.2: Revenue from Rail Goods ('000 Pula): January - September 2011 & 2012

Months	2012				2011						
	Total Imports	Total Exports	Local Traffic	Transit Traffic	Total Traffic	Total Imports	Total Exports	Total Traffic	Local Traffic	Transit Traffic	Total Traffic
Jan	10,769	19,939	3,230	621	33,317	8,198	6,603	3,697	-	-	18,498
Feb	9,068	6,739	4,135	2,691	22,633	5,893	7,111	4,780	4	4	17,788
Mar	7,840	8,544	4,039	963	21,386	10,256	7,918	3,496	1,485	1,485	23,155
Apr	10,115	7,774	3,839	1,000	22,728	7,410	7,331	3,248	451	451	18,440
May	12,305	8,507	3,572	209	24,593	11,559	7,116	4,214	186	186	23,075
Jun	10,821	8,738	3,075	539	23,173	10,208	7,850	4,019	422	422	22,499
Jul	9,211	9,442	4,370	1,430	24,453	10,390	7,698	2,958	243	243	21,289
Aug	10,084	11,616	4,377	61	26,138	10,154	9,312	5,812	255	255	25,533
Sep	9,730	10,129	4,373	1,293	25,525	9,329	8,383	2,919	336	336	20,967
Total	89,943	91,428	35,010	8,807	223,946	83,397	69,322	35,143	3,382	3,382	191,244

Source: Botswana Railways

Figure 4.2: Monthly Revenue from Rail Transported Goods ('000 Pula), 2012



Majelantle

A. N. Majelantle
Statistician General

January 2013