



Stats Brief

Released by Statistics Botswana

Private Bag 0024, Gaborone, Botswana

Tel. (267) 3671300, Fax (267) 3952201 / 3956087

Email: csobots@gov.bw; Website: www.cso.gov.bw

Contact Statistician: Gaolathe Mmolawa Tel: (267) 361 2000

All correspondence should be addressed to the Statistician General

No. 2013/6

April, 2013

BOTSWANA TRANSPORT AND INFRASTRUCTURE STATISTICS QUARTER 4, 2012

1. INTRODUCTION

This is an abridged report on Transport and Infrastructure Statistics for the period October to December 2012. More detailed statistics will be available in the Transport and Infrastructure Statistics 2012 report to be released in the next quarter.

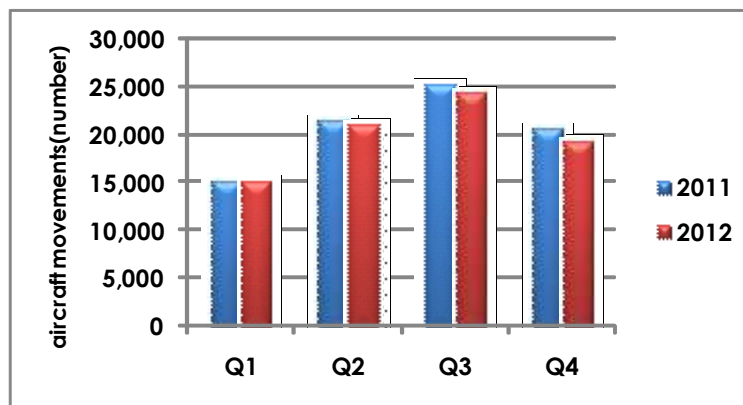
2. AIR TRANSPORT

This section looks at movement of aircrafts and air passengers locally and internationally.

2.1 Aircraft Movement

Table 2.1 and **Figure 2.1** show quarterly aircraft movements by type during 2011 and 2012. Comparison of the fourth quarter of 2012 to the previous quarter of 2012 shows a strong deceleration in total aircraft movements. Total aircraft movements registered for Q4 2012 stood at 19,391; a decrease of 20.6 percent from the total of 24,426 recorded in Q3 2012. The downward trend is also reflected when comparing aircraft movements in Q4 2012 to those of the same quarter in 2011. Total aircraft movements reduced by 6.0 percent in Q4 2012 from a total of 20,621 recorded in Q3 2011.

Figure 2.1: Aircraft Movement, Q1 – Q4 2011 & 2012

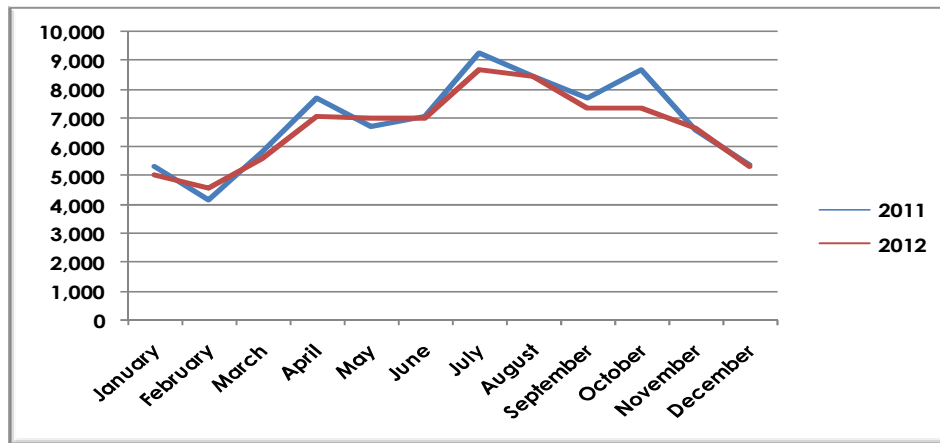


The highest number of movements was recorded in Q3 of both years whilst the least were recorded in Q1 of both 2011 and 2012. In 2012, Q3 accounted for 30.5 percent of

the total movements while in 2011 it accounted for 30.7 percent. This is attributed to the hunting season in the northern part of the country which normally peaks in the third quarter of the year.

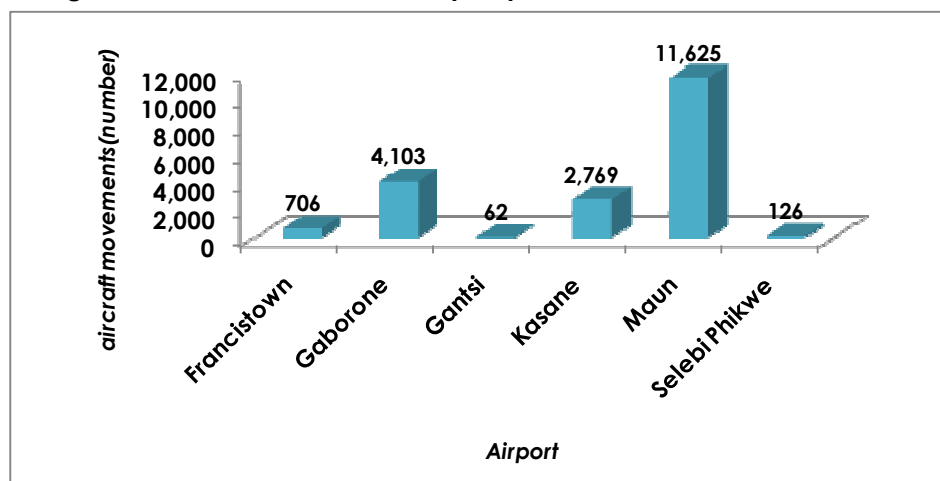
In overall, aircraft movements were lower in 2012 when compared to 2011; the decline is of 3.2 percent from a total of 82,799 flights recorded in 2011. This is shown in **Table 2.2** and **Figure 2.2** below.

Figure 2.2: Aircraft Movement by Month and Year, 2011 & 2012



Maun airport was the busiest in Q4 2012, accounting for 60 percent of total movements. Gaborone was second, with 21.2 percent of the total. The airport with the least number of movements was Gantsi, accounting for only 0.3 percent of the movements. This scenario is depicted in **Table 2.3** and **Figure 2.3** below.

Figure 2.3: Aircraft Movement by Airport, October – December 2012



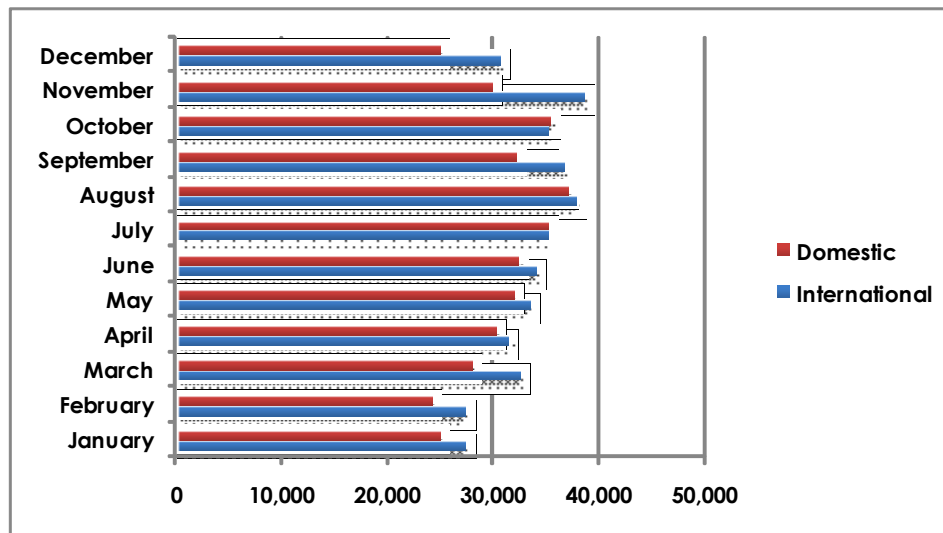
2.2 Air Passenger Movement

Total air passengers carried in Q4 2012 reduced from the total recorded in the same period in the previous year. The decrease is of 3.5 percent from a total of 201,157

reported in Q4 2011, to 194, 028 in Q4 2012. Compared to the previous quarter (Q3) of the same year, Q4 2012 registered a drop of 9.1 percent in air passenger movement. The last two months of the quarter (as was the case with the same months of the previous year) showed a significant drop in the number of air passenger movement.

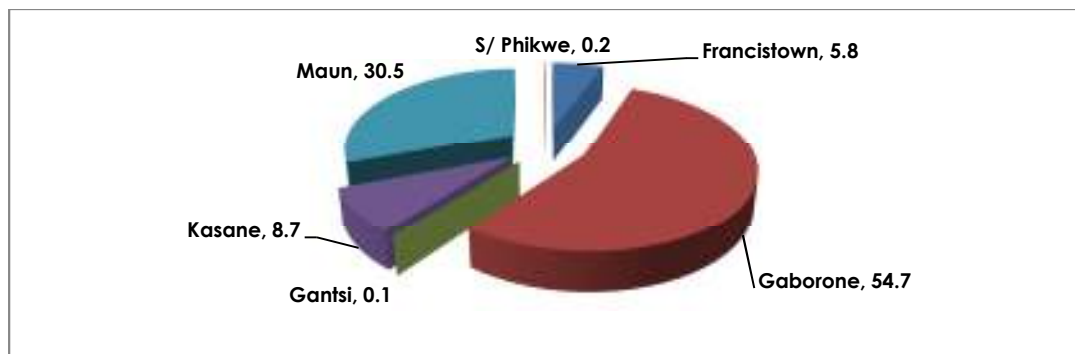
Comparison of all the quarters of 2012 shows that Q3 2012 registered the highest (27.9 percent) air passenger movement followed by Q4 2012 (25.4 percent). The least (21.5 percent) air passenger movement was recorded in Q1 2012. These details are captured in **Table 2.4** and **Figure 2.3**.

Figure 2.3: Air Passenger Movement by Month and Type, January - December 2012



Most passengers used Gaborone airport compared to other domestic airports during Q4 2012; Gaborone airport constituted 54.7 percent of all the passenger movements and majority of these (76.1 percent) were international air passenger movements. Airports with the lowest passenger movements were Selibe Phikwe and Gantsi which constituted 0.18 percent and 0.05 percent respectively; most of the passenger movements for both airports were domestic movements. This is shown in **Table 2.6** and **Figure 2.4**

Figure 2.4: Percentage Distribution of Air Passengers by Airport, Q4 2012



3. MOTOR VEHICLE REGISTRATION

This part considers licensing of motor vehicles with respect to those registered for the first time and renewals of licenses of pre-existing ones.

3.1. Motor Vehicle First Registrations

This section covers vehicles that were only registered for the first time. It could either be new or pre-used vehicles.

Vehicle first registrations were highest in Q4 of 2012, accounting for 28.0 percent of all the new registrations recorded in 2012. The second highest registrations were in Q3 2012 with 26.8 percent. Q1 of 2012 had the least number of new registrations, it accounted for 20.6 percent of the total registrations. Passenger cars dominated (75.2 percent) in first/new registrations in Q4 2012, Light duty vehicles (LDVs) were second at 8.8 percent. Buses were the least in first/new registrations, they accounted for only 0.4 percent of the total of first registrations. See **Tables 3.1 – 3.3**.

During the last two quarters of 2012, passenger cars constituted 75.3 percent of the new registrations with 47 percent of those vehicles being registered in Gaborone. LDV's followed with 9.0 percent while the rest contributed 15.7 percent of the total new registrations.

Figure 3.1: Motor Vehicle First Registrations and Renewals by Quarter, 2011 & 2012

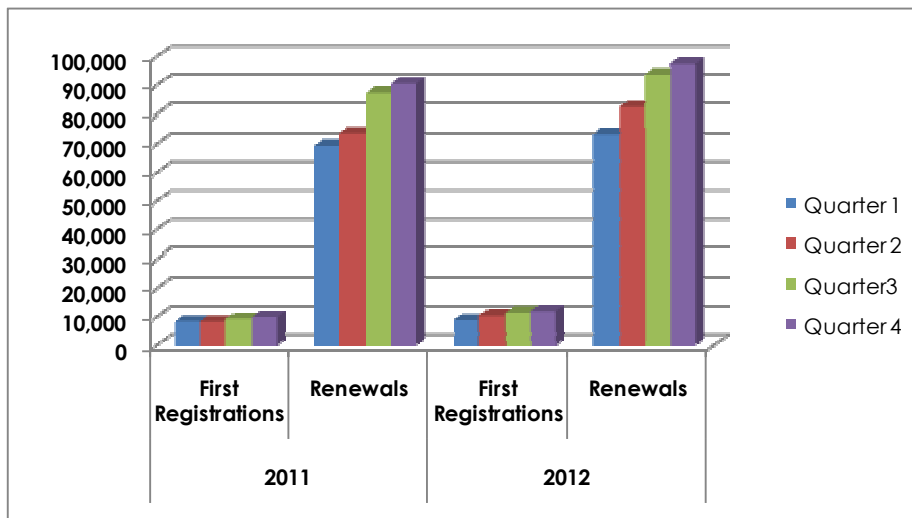


Table 3.4 shows that during the last two quarters of 2012 Toyota continued to be the market leader with 11,553 first registrations; constituting 49.1 percent of all the new registrations. Nissan came second with 1,707; constituting 7.3 percent of the registrations. Massey Ferguson was the most preferred model for Tractors.

3.2 Motor Vehicle Renewals by Month

Tables 3.5 and 3.6 shows that 28.1 percent of the vehicle renewals were done in Q4 of 2012 compared to the 28.2 percent in the same quarter of 2011. November had the highest number of registrations with a total of 35,653.

4. RAIL TRANSPORT

This part looks at the quantity of goods (in net tonnes) carried by rail and revenue generated from the conveyance of such goods.

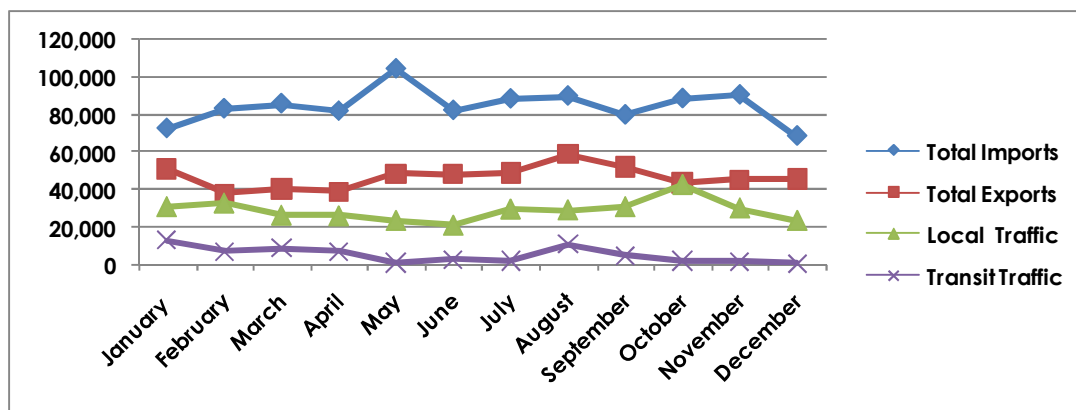
4.1. Goods Traffic

The goods are in four (4) categories: goods coming into Botswana as imports, goods leaving the country as exports, goods moving within the country and finally goods passing through Botswana in transit to other countries.

Total traffic of rail goods decreased by 7.9 percent in Q4 2012; from 525,085 recorded in Q3 2012 to 483,519 in Q4 2012. Total Imports contributed slightly above 50 percent of the total goods transported in Q4 2012 while local traffic constituted only 19.8 percent of the goods. Compared to the same quarter in 2011, Q4 2012 registered a lower traffic in railway transported goods. This is depicted in Tables 4.1 and 4.2.

Figure 4.1 below shows the trend in rail goods traffic. Most of the goodstransported by rail were imports, followed by exports and the least being transit traffic which contributed only 3.17 percent of the goods transported.

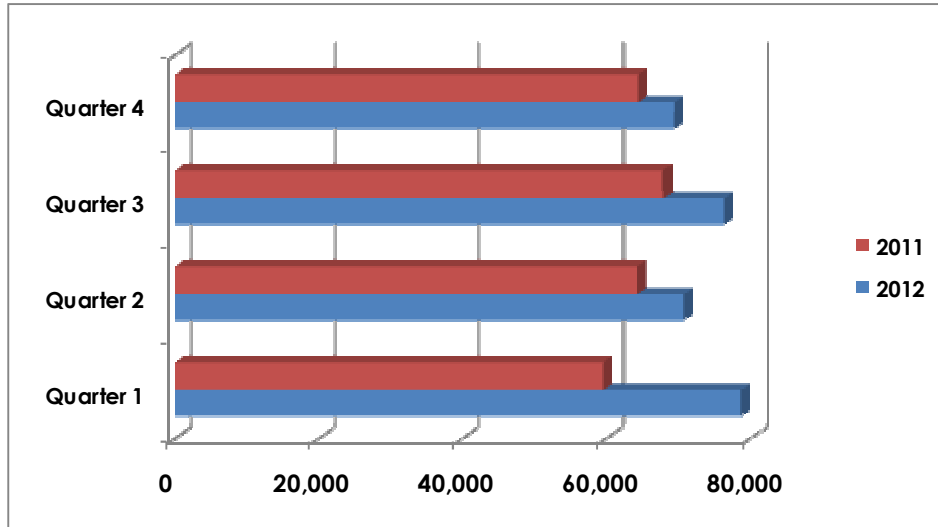
Figure 4.1: Rail Goods Traffic, Imports and Exports (Net tonnes) by Month, January to December 2012



4.2. Revenue

Q4 2012 registered the lowest revenue from railway transported goods as compared to other quarters in the same year. It recorded P69.2 million, a decrease of 9.9 percent from the amount of P76.1 million recorded in Q3 2012. Compared to the same quarter in 2011, Q4 2012 was better, recording 7.8 percent increase in revenue. Details are as shown in tables.

Figure 4.2: Quarterly Revenue from Rail Transported Goods ('000 Pula), 2011 & 2012



Maj

A. N. Majelantle
Statistician General
April 2013

APPENDIX: TABLES

Table 2.1: Aircraft Movement by Quarter and Type of Movement, 2011 - 2012

Quarter	2011			2012		
	International	Domestic	Total	International	Domestic	Total
Quarter 1	4,136	11,194	15,330	3,718	11,600	15,318
Quarter 2	5,494	15,966	21,460	4,638	16,391	21,029
Quarter 3	5,796	19,592	25,388	5,108	19,318	24,426
Quarter 4	4,538	16,083	20,621	4,421	14,970	19,391
Total	19,964	62,835	82,799	17,885	62,279	80,164

Source: Civil Aviation Authority of Botswana

Table 2.2: Aircraft Movement by Month and Type of Movement, 2011 & 2012

Month	2011			2012		
	International	Domestic	Total	International	Domestic	Total
January	1,226	4,111	5,337	1,178	3,890	5,068
February	1,235	2,929	4,164	1,183	3,413	4,596
March	1,675	4,154	5,829	1,357	4,297	5,654
April	1,652	6,060	7,712	1,389	5,660	7,049
May	1,842	4,861	6,703	1,592	5,395	6,987
June	2,000	5,045	7,045	1,657	5,336	6,993
July	1,943	7,302	9,245	1,749	6,926	8,675
August	1,979	6,468	8,447	1,738	6,686	8,424
September	1,874	5,822	7,696	1,621	5,706	7,327
October	1,772	6,902	8,674	1,588	5,775	7,363
November	1,540	5,031	6,571	1,535	5,124	6,659
December	1,226	4,150	5,376	1,298	4,071	5,369
Total	19,964	62,835	82,799	17,885	62,279	80,164

Source: Civil Aviation Authority of Botswana

Table 2.3: Aircraft Movement by Airport and Type, Q4 2012

Airport	International Movements	Domestic Movements	Total Movements
Francistown	199	507	706
Gaborone	2,714	1,389	4,103
Gantsi	-	62	62
Kasane	544	2,225	2,769
Maun	909	10,716	11,625
Selebi Phikwe	55	71	126
Total	4,421	14,970	19,391

Source: Civil Aviation Authority of Botswana

Table 2.4: Air Passenger Movement by Quarter and Type of Movement, 2011 - 2012

Quarter	2011			2012		
	International	Domestic	Total	International	Domestic	Total
Quarter 1	90,447	74,083	164,530	87,164	77,018	164,182
Quarter 2	106,507	94,509	201,016	98,857	94,364	193,221
Quarter 3	113,459	108,299	221,758	109,466	104,075	213,541
Quarter 4	103,147	98,010	201,157	104,156	89,872	194,028
Total	413,560	374,901	788,461	399,643	365,329	764,972

Source: Civil Aviation Authority of Botswana

Table 2.5: Air Passenger Movement by Month and Type, January - December 2011 & 2012

Month	2011			2012		
	International	Domestic	Total	International	Domestic	Total
January	29,016	22,091	51,107	27,337	24,906	52,243
February	27,035	22,719	49,754	27,288	24,163	51,451
March	34,396	29,273	63,669	32,539	27,949	60,488
April	35,222	33,597	68,819	31,304	30,138	61,442
May	35,921	29,849	65,770	33,489	31,978	65,467
June	35,364	31,063	66,427	34,064	32,248	66,312
July	37,585	36,763	74,348	35,130	35,073	70,203
August	39,076	37,692	76,768	37,738	36,984	74,722
September	36,798	33,844	70,642	36,598	32,018	68,616
October	38,643	40,772	79,415	35,111	35,272	70,383
November	34,826	30,911	65,737	38,497	29,770	68,267
December	29,678	26,327	56,005	30,548	24,830	55,378
Total	413,560	374,901	788,461	399,643	365,329	764,972

Source: Civil Aviation Authority of Botswana

Table 2.6: Air Passenger Movement by Airport , Q4 2012

Airport	International Movements	Domestic Movements	Total Movements
Francistown	1,896	9,344	11,240
Gaborone	80,799	25,367	106,166
Gantsi	'-	100	100
Kasane	3,512	13424	16,936
Maun	17,813	41,417	59,230
S/ Phikwe	136	220	356
Total	104,156	89,872	194,028

Source: Civil Aviation Authority of Botswana

Table 3.1: First Registrations by Quarter and Type of Vehicle, 2012

Quarter	2012										2011 Total	
	Passenger		Trucks	Mini		Motor			Tankers/			Total
	Cars	LDVs		Buses	Buses	Cycles	Tractors	Trailers	Horses	Others		
Quarter 1	6,250	971	571	234	23	71	165	427	91	54	8,857	8,359
Quarter 2	7,594	1,061	689	283	33	48	136	497	117	73	10,531	8,344
Quarter 3	8,669	1,067	654	329	31	43	183	403	83	38	11,500	9,261
Quarter 4	9,035	1,061	586	327	46	57	288	476	98	40	12,014	10,080
Total	31,548	4,160	2,500	1,173	133	219	772	1,803	389	205	42,902	36,044

Source: Department of Road Transport and Safety

Note: LDV = Light Duty Vehicles

Table 3.2: First Registrations by Month and Type of Vehicle, 2012

Month	2012										2011	
	Passenger		Trucks	Mini		Motor			Tankers/			Total
Cars	LDVs	Buses		Buses	Cycles	Tractors	Trailers	Horses	Others			
January	1,938	235	169	54	8	16	65	117	29	22	2,653	2,399
February	2,055	321	213	85	5	30	52	139	27	17	2,944	2,625
March	2,257	415	189	95	10	25	48	171	35	15	3,260	3,335
April	2,278	372	190	71	8	15	36	153	53	34	3,210	2,665
May	2,548	360	253	125	10	21	46	146	30	25	3,564	2,923
June	2,768	329	246	87	15	12	54	198	34	14	3,757	2,756
July	2,705	310	173	97	11	12	28	127	27	17	3,507	2,807
August	3,238	474	248	134	15	16	60	140	25	10	4,360	3,248
September	2,726	283	233	98	5	15	95	136	31	11	3,633	3,206
October	2,748	327	209	102	11	18	102	130	26	10	3,683	3,033
November	3,132	347	198	119	11	30	116	152	42	16	4,163	3,185
December	3,155	387	179	106	24	9	70	194	30	14	4,168	3,862
Total	31,548	4,160	2,500	1,173	133	219	772	1,803	389	205	42,902	36,044

Source: Department of Road Transport and Safety

Note: LDV = Light Duty Vehicles

Table 3.3: First Registrations by Registration Station and Type of Vehicle, Q3 - Q4 2012

	Passenger		Trucks	Mini		Motor			Horses/			Total
	Cars	LDVs		Buses	Buses	Cycles	Tractors	Trailers	Tankers	Others		
Bobonong	1	-	-	-	-	-	-	-	-	-	-	1
Francistown	1,954	177	94	45	8	1	41	129	25	9		2,483
Gaborone	8,315	1,389	679	377	47	81	205	418	123	49		11,683
Gantsi	170	16	5	2	-	1	2	14	1	1		212
Gumare	6	-	-	-	-	1	-	-	-	-		7
Jwaneng	71	1	4	2	-	-	9	3	-	-		90
Kanye	59	5	2	6	-	-	20	9	-	-		101
Kasane	115	11	3	3	-	-	7	9	-	2		150
Letlhakane	78	6	8	-	1	1	6	1	1	-		102
Letlhakeng	-	-	-	-	-	-	-	-	-	-		-
Lobatse	1,279	85	38	38	3	-	43	55	13	1		1,555
Mahalapye	151	89	10	9	2	1	19	8	1	-		290
Masunga	6	-	-	-	-	-	2	-	-	-		8
Maun	555	92	28	11	3	5	7	48	2	3		754
Mochudi	142	17	14	10	1	-	19	29	1	4		237
Mogoditsane	3,131	20	269	99	6	3	11	37	3	-		3,579
Molepolole	74	7	7	2	-	-	12	18	1	-		121
Palapye	252	24	23	9	1	3	11	22	4	3		352
Ramotswa	795	9	22	21	-	-	11	7	-	2		867
S/Phikwe	329	93	19	10	4	1	29	45	4	2		536
Serowe	194	77	12	11	1	2	12	16	1	-		326
Sowa	1	2	-	1	-	-	1	2	-	-		7
Shakawe	2	-	-	-	-	-	-	-	-	-		2
Tsabong	20	8	3	-	-	-	3	9	1	2		46
Tutume	4	-	-	-	-	-	1	-	-	-		5
Total	17,704	2,128	1,240	656	77	100	471	879	181	78		23,514

Source: Department of Road Transport and Safety

Note: LDV = Light Duty Vehicles

Table 3.4 First Registrations by Make and Type of Vehicle, Q3 - Q4 2012

Make	Passenger		Mini		Motor			Tankers			Total
	Cars	LDVs	Trucks	Buses	Buses	cycles	Tractors	Trailers	/Horses	Others	
Audi	335	-	-	-	-	-	-	-	-	-	335
BMW	913	-	-	-	-	4	-	-	-	-	917
Chevrolet	128	106	-	-	-	-	-	-	-	-	234
Chrysler	14	-	-	-	-	-	-	-	-	-	14
Colt	1	-	-	-	-	-	-	-	-	-	1
Daewoo	1	-	-	-	-	-	-	-	-	-	1
Dat/Nissan	1,077	295	242	80	9	-	-	-	3	1	1,707
Ford	185	170	2	2	-	-	72	-	-	1	432
Hino	-	-	50	1	1	-	1	-	-	-	53
Honda	698	1	-	-	-	24	-	-	-	-	723
Hyundai	117	3	11	2	-	-	-	-	-	-	133
Isuzu	5	224	13	3	2	-	-	-	-	5	252
Jeep	142	-	-	-	-	-	-	-	-	-	142
Kia	90	7	13	-	-	-	-	-	-	-	110
Land Rover	133	23	-	-	-	-	-	-	-	-	156
Mahindra	24	185	2	-	-	-	3	-	-	-	214
MAN	-	-	12	-	6	-	-	-	24	-	42
Massey Ferguson	-	-	-	-	-	-	212	-	-	-	212
Mazda	1,192	34	108	85	1	-	-	-	-	-	1,420
M/Benz	551	17	49	31	13	-	-	-	15	2	678
Mitsubishi	402	9	25	11	-	-	-	-	-	-	447
Opel	61	3	-	-	-	-	-	-	-	-	64
Peugeot	49	1	-	2	-	-	-	-	-	-	52
Renault	10	1	3	-	-	-	-	-	-	-	14
Subaru	155	1	-	-	-	-	-	-	-	-	156
Toyota	9,717	902	514	378	5	-	-	-	1	36	11,553
VW	1,324	96	-	18	2	-	-	-	-	1	1,441
Volvo	153	-	12	-	1	-	-	-	26	10	202
Yamaha	-	-	-	-	-	26	-	-	-	-	26
Other	227	50	184	43	37	46	183	879	112	22	1,783
Total	17,704	2,128	1,240	656	77	100	471	879	181	78	23,514

Source: Department of Road Transport and Safety

Note: LDV = Light Duty Vehicles

Table 3.5 Renewals by Quarter and Type of Vehicle , 2012

Quarter	2012										2011 Total	
	Passenger		Trucks	Mini		Motor		Tankers/				Total
	Cars	LDVs		Buses	Buses	Cycles	Tractors	Trailors	Horses	Others		
Quarter 1	37,342	20,598	5,361	2,526	254	330	907	3,422	85	2,494	73,319	69,477
Quarter 2	45,006	22,954	5,179	2,629	308	345	782	3,961	642	632	82,438	73,651
Quarter 3	52,071	24,923	5,686	3,185	345	374	1,333	4,533	711	620	93,781	87,355
Quarter 4	55,242	25,076	5,475	3,118	388	364	1,937	4,593	697	573	97,463	90,577
Total	189,661	93,551	21,701	11,458	1,295	1,413	4,959	16,509	2,135	4,319	347,001	321,060

Source: Department of Road Transport and Safety

Note: LDV = Light Duty Vehicles

Table 3.6 Renewals by Month and Type of Vehicle , 2012

Month	2012											2011 Total
	Passenger		Trucks	Mini		Motor			Tankers/			
	Cars	LDVs		Buses	Buses	Cycles	Tractors	Trailors	Horses	Others		
January	10,914	5,737	1,603	714	56	94	339	1,017	16	782	21,272	19,694
February	12,640	7,230	1,887	879	74	111	293	1,185	36	801	25,136	22,983
March	13,788	7,631	1,871	933	124	125	275	1,220	33	911	26,911	26,800
April	14,440	7,417	1,652	827	87	94	247	1,209	209	177	26,359	23,504
May	15,538	7,951	1,836	960	115	125	254	1,398	238	253	28,668	26,398
June	15,028	7,586	1,691	842	106	126	281	1,354	195	202	27,411	23,749
July	17,601	8,534	1,901	1,030	111	132	339	1,510	241	209	31,608	28,358
August	17,557	8,373	1,997	1,139	119	134	427	1,530	232	216	31,724	30,674
September	16,913	8,016	1,788	1,016	115	108	567	1,493	238	195	30,449	28,323
October	16,729	8,169	1,872	955	96	128	690	1,409	252	211	30,511	27,651
November	20,254	9,106	1,978	1,156	165	135	722	1,658	272	207	35,653	31,534
December	18,259	7,801	1,625	1,007	127	101	525	1,526	173	155	31,299	31,392
Total	82,348	43,552	10,540	5,155	562	675	1,689	7,383	727	3,126	347,001	321,060

Source: Department of Road Transport and Safety

Note: LDV = Light Duty Vehicles

Table 4.1: Rail Goods Traffic, Imports, and Exports (Net Tonnes) by Quarter , 2011 & 2012

Quarter	2012				2011	
	Total Imports	Total Exports	Local Traffic	Transit Traffic	Total Traffic	Total Traffic
Quarter 1	241,161	130,454	89,576	29,000	490,191	526,037
Quarter 2	267,937	136,517	70,648	11,000	486,102	506,814
Quarter 3	257,586	160,231	89,268	18,000	525,085	511,513
Quarter 4	247,109	135,566	95,959	4,884	483,519	490,447
Total	1,013,793	562,768	345,451	62,884	1,984,897	2,034,811

Source: Botswana Railways

Table 4.2: Rail Goods Traffic, Imports, and Exports (Net Tonnes) by Month, 2011 & 2012

Months	2012				2011	
	Total Imports	Total Exports	Local Traffic	Transit Traffic	Total Traffic	Total Traffic
January	72,478	51,224	30,728	13,000	167,430	161,844
February	83,006	38,361	32,535	7,000	160,902	178,901
March	85,677	40,869	26,313	9,000	161,859	185,291
April	81,678	39,336	25,983	7,000	153,997	144,295
May	104,179	48,797	23,562	1,000	177,538	191,694
June	82,080	48,384	21,103	3,000	154,567	170,825
July	88,202	48,940	29,509	2,000	168,651	163,730
August	89,700	58,853	29,058	11,000	188,611	167,328
September	79,684	52,438	30,701	5,000	167,823	180,456
October	88,337	44,000	42,325	2,420	177,083	166,226
November	90,345	45,522	30,052	1,584	167,503	154,347
December	68,427	46,044	23,582	880	138,933	169,874
Total	1,013,793	562,768	345,451	62,884	1,984,897	2,034,811

Source: Botswana Railways

Table 4.3: Quarterly Revenue from Rail Goods ('000 Pula): 2011 & 2012

Quarter	2012					2011				
	Total Imports	Total Exports	Local Traffic	Transit Traffic	Total Traffic	Total Imports	Total Exports	Local Traffic	Transit Traffic	Total Traffic
Quarter 1	27,677	35,222	11,404	4,275	78,578	24,347	21,632	11,973	1,489	59,441
Quarter 2	33,241	25,019	10,486	1,748	70,494	29,177	22,297	11,481	1,059	64,014
Quarter 3	29,025	31,187	13,120	2,784	76,116	29,873	25,393	11,689	834	67,789
Quarter 4	29,701	26,564	12,170	755	69,190	27,223	24,819	10,023	2,104	64,169
Total	119,644	117,992	47,180	9,562	294,378	110,620	94,141	45,166	5,486	255,413

Source: Botswana Railways

Table 4.4: Revenue from Rail Goods ('000 Pula): January - December 2011 & 2012

Months	2012					2011				
	Total Imports	Total Exports	Local Traffic	Transit Traffic	Total Traffic	Total Imports	Total Exports	Local Traffic	Transit Traffic	Total Traffic
January	10,769	19,939	3,230	621	34,559	8,198	6,603	3,697	-	18,498
February	9,068	6,739	4,135	2,691	22,633	5,893	7,111	4,780	4	17,788
March	7,840	8,544	4,039	963	21,386	10,256	7,918	3,496	1,485	23,155
April	10,115	7,774	3,839	1,000	22,728	7,410	7,331	3,248	451	18,440
May	12,305	8,507	3,572	209	24,593	11,559	7,116	4,214	186	23,075
June	10,821	8,738	3,075	539	23,173	10,208	7,850	4,019	422	22,499
July	9,211	9,442	4,370	1,430	24,453	10,390	7,698	2,958	243	21,289
August	10,084	11,616	4,377	61	26,138	10,154	9,312	5,812	255	25,533
September	9,730	10,129	4,373	1,293	25,525	9,329	8,383	2,919	336	20,967
October	11,323	8,594	4,528	374	24,819	9,301	8,779	2,921	-	21,001
November	10,799	9,073	4,112	245	24,229	9,139	6,555	3,223	809	19,726
December	7,579	8,897	3,530	136	20,142	8,783	9,485	3,879	1,295	23,442
Total	119,644	117,992	47,180	9,562	294,378	110,620	94,141	45,166	5,486	255,413

Source: Botswana Railways