

Republic of Botswana

STATS BRIEF

Released by the Central Statistics Office
Private Bag 0024, Gaborone, BOTSWANA
Telephone: 367-1300, Fax: 395-2201
E-mail: csobots@gov.bw;
Web-site www.cso.gov.bw
Contact Statistician: P. Kelekwang



April 2009

2006/7 Census of Enterprises And Establishments

Preliminary Results

I. Introduction

This release presents the preliminary results for the 2006/7 Census of Enterprises and Establishments (CEE) which was conducted by Central Statistics Office (CSO) from August 2006 to July 2008. The results are provisional and thus subject to adjustment pending the completion of the data analysis process.

The 2006/7 CEE is the first economic census conducted by CSO. It was carried out under the provisions of Statistics Act Chapter 17:01 of the Laws of Botswana. The CSO has included it in its integrated survey programme, and will as a result be carried out every five years.

The purpose of the CEE is to provide a portrait of the nation's economy, from the national to the local level as well as to update the CSO's Enterprises and Establishments Register which is used as a sampling frame for all economic statistics surveys. The 2006/7 CEE measured economic activity for all sectors except public administration during the calendar year 2006/7. It was done in two phases:

- Listing of all establishments in localities with a population of 2000 or more persons
- Enumeration of the listed establishments

The 2006/7 CEE collected data primarily from establishments and the statistics displayed in this brief are published by aggregation of establishments. An establishment is a business or industrial unit at a single physical location that produces or distributes goods or performs services.

Many companies own or control more than one establishment. Those establishments may be located in different geographic areas and may be engaged in different kinds of

business. By collecting separate information for each establishment, the CEE included detailed data for each industry and area of location.

All data compiled in this release originated from census questionnaires and are therefore not subject to sampling errors but to non-sampling errors among others. Non-sampling errors can be attributed to many sources: inability to identify all cases in the actual universe, definition and classification difficulties, differences in the interpretation of questions, errors in recording or coding the data obtained, and other errors of collection, response, coverage and estimation for misreported data.

2. Historical Information – The Enterprises And Establishments Register

The 2006/7 Census of Enterprises and Establishments was conducted with the main aim of updating the EER database whose data had been collected over the years since the 1980s. CSO relies on the EER in the provision of regular and timely economic statistical information on the performance and state of the economy.

The EER is an inventory of enterprises and institutions that operate within the Botswana economy. It is the universe of productive units in the country and provides a comprehensive framework for supporting data collection, production and analysis operations of business/economic surveys in the CSO. It provides a frame from which samples are selected and population estimates are produced. It contains a range of basic information pertaining to enterprises and other institutions required for conducting surveys.

Since its inception in the 1980s, the foundation and development of the EER was strong and robust. To keep it current, it was regularly updated to record enterprise births, deaths and capture changes of addresses and stratification variables.

Despite regular updating of the EER over the years, CSO realized that the EER was no longer capable of responding adequately to the new economic and technological challenges of the evolving economy.

The CSO then decided to conduct, for the first time, an economic census named the Census of Enterprises and Establishments (CEE) from August 2006 to July 2008 to augment the EER data and benchmark the economic indicators produced through business/economic surveys. The CEE was conducted under the provisions of Statistics Act Chapter 17:01 of the Laws of Botswana.

At the time when the CEE took off, there were 59,387 establishments listed in EER. Out of the 59,387 listed establishments, 16,729 of them were known to be operating. Private entities constituted 91.9 percent (15,380) of all the operating establishments. Figure 1 below shows the trend of operating establishments from September 1999 to September 2006 while Figure 2 compares the number of operating establishments in cities and towns during September 1999 and September 2006.

Figure 1: The Number of Operating Establishments (Sept. 1999 – Sept. 2006)

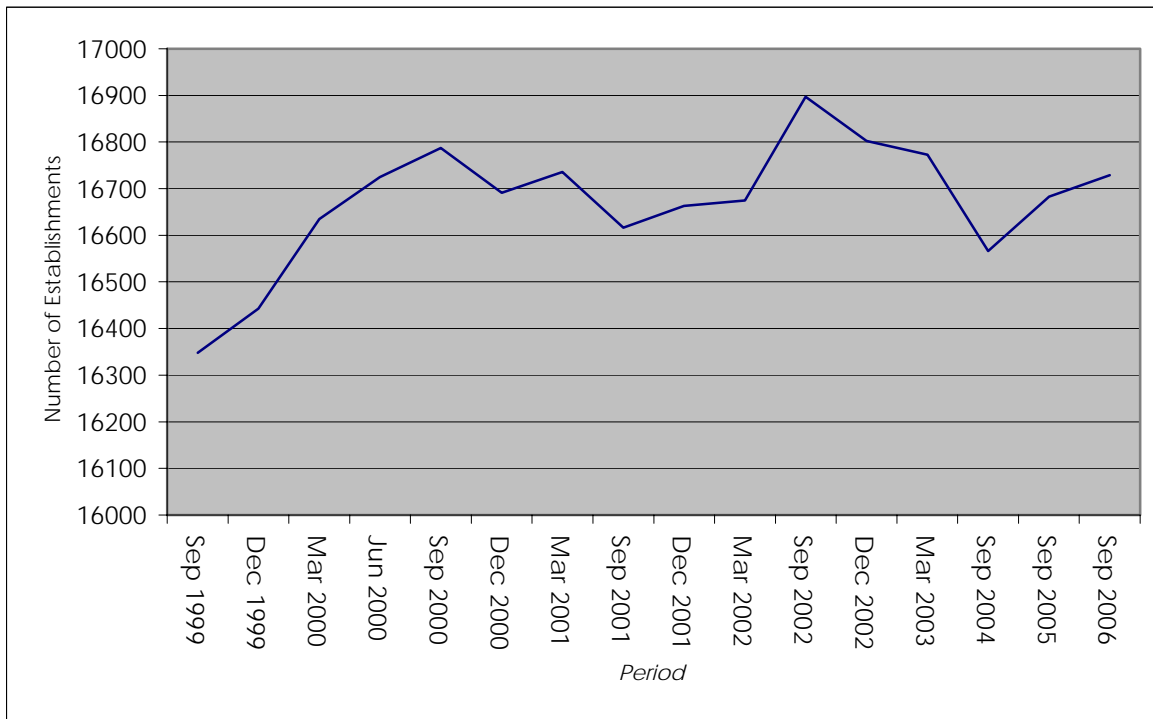
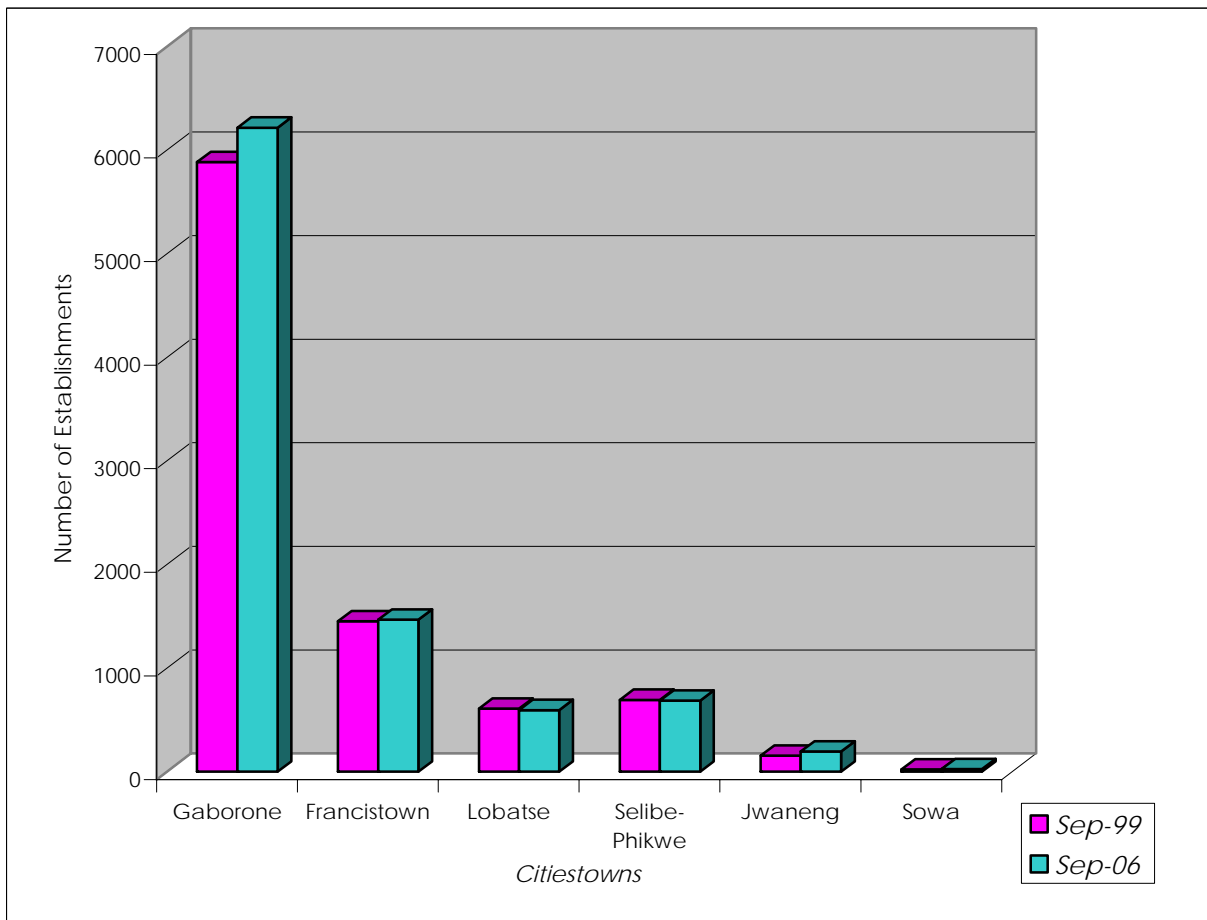


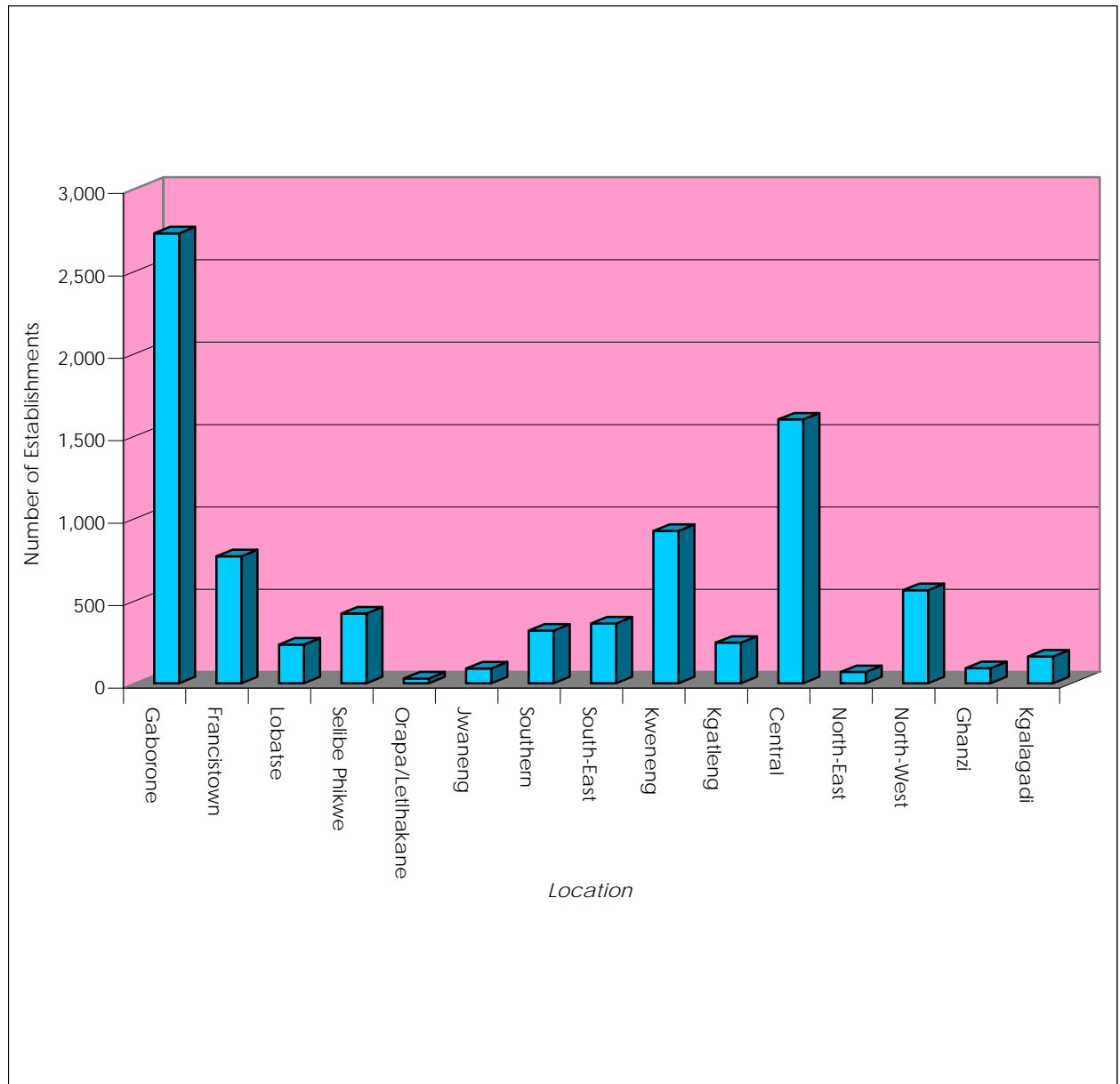
Figure 2: The Number of Operating Establishments in Cities & Towns September 1999 & September 2006



3. Enumerated Establishments

The 2006/7 CEE preliminary results show that a total of 16,310 establishments were listed for enumeration. A total of 16,556 establishments were actually enumerated which indicates that some of the establishments came into existence after the listing exercise. Of the 16, 556 enumerated establishments, 8,613 (52.0 percent) responded positively by providing the required information. An indication of the extent of coverage of the 2006/7 CEE is presented in Table 1.

Figure 2: The Distribution of Enumerated Establishments by Location

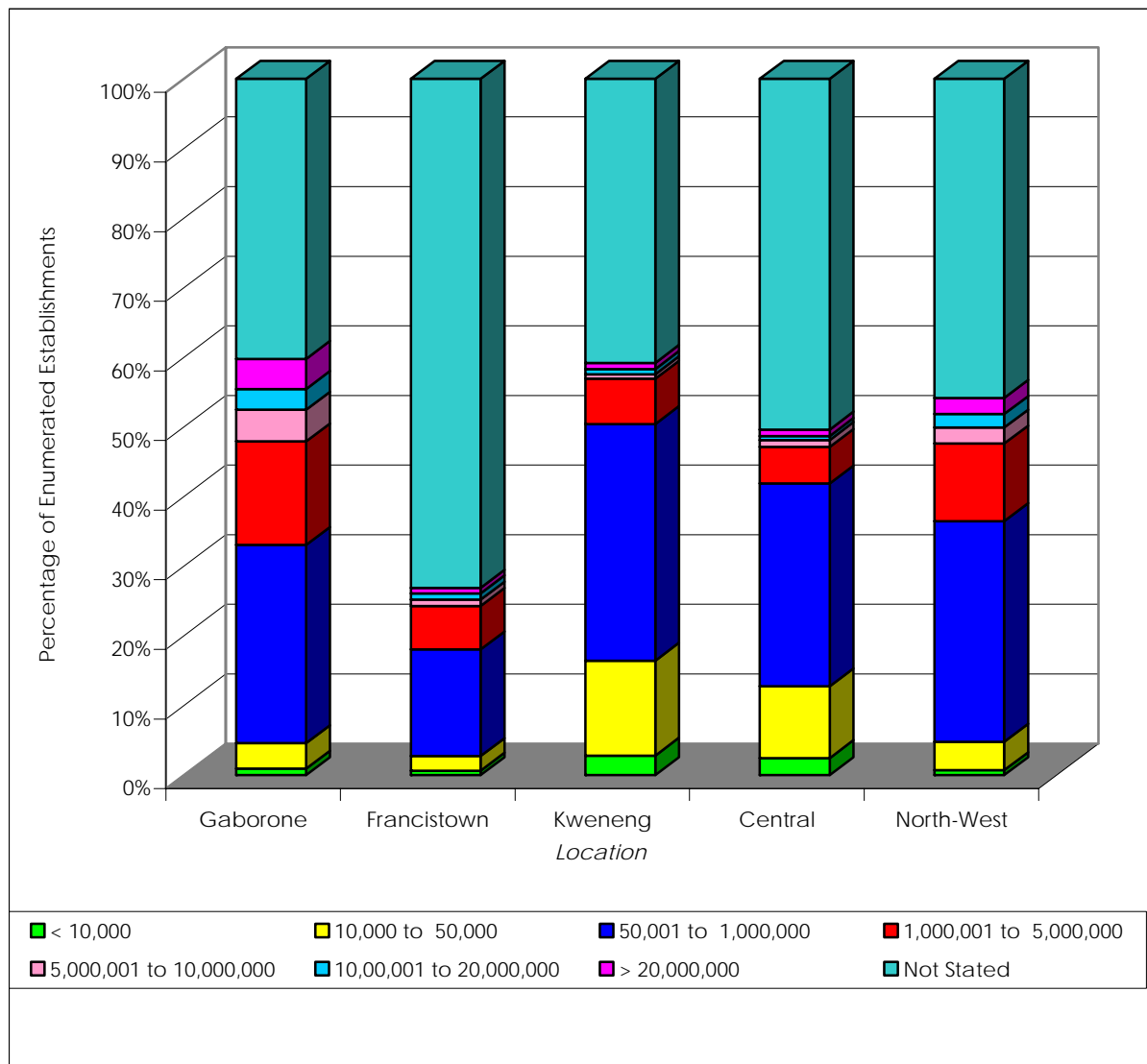


4. Geographic Characteristics

Tables 2-4 in the tables section indicate that Gaborone had the largest number of establishments enumerated during the 2006/7 CEE, accounting for 31.7 percent, and also employed the largest number of employees. From a total of 2,729 enumerated establishments in Gaborone, 58.4 percent of them were registered private limited companies while 12.2 percent were sole proprietors. In addition, 28.5 percent of the Gaborone based enumerated establishments made an annual turnover of between P50, 000 and P1 million; 14.9 percent made between P1 million and P5 million while only 4.3 percent had annual turnover above P20 million.

The Central District region was the second in the number of enumerated establishments, with 18.6 percent of the total. Sole Proprietors dominated establishments enumerated in the Central District.

Figure 3: The Proportion of Enumerated Establishments for the Five Largest Locations by Turnover

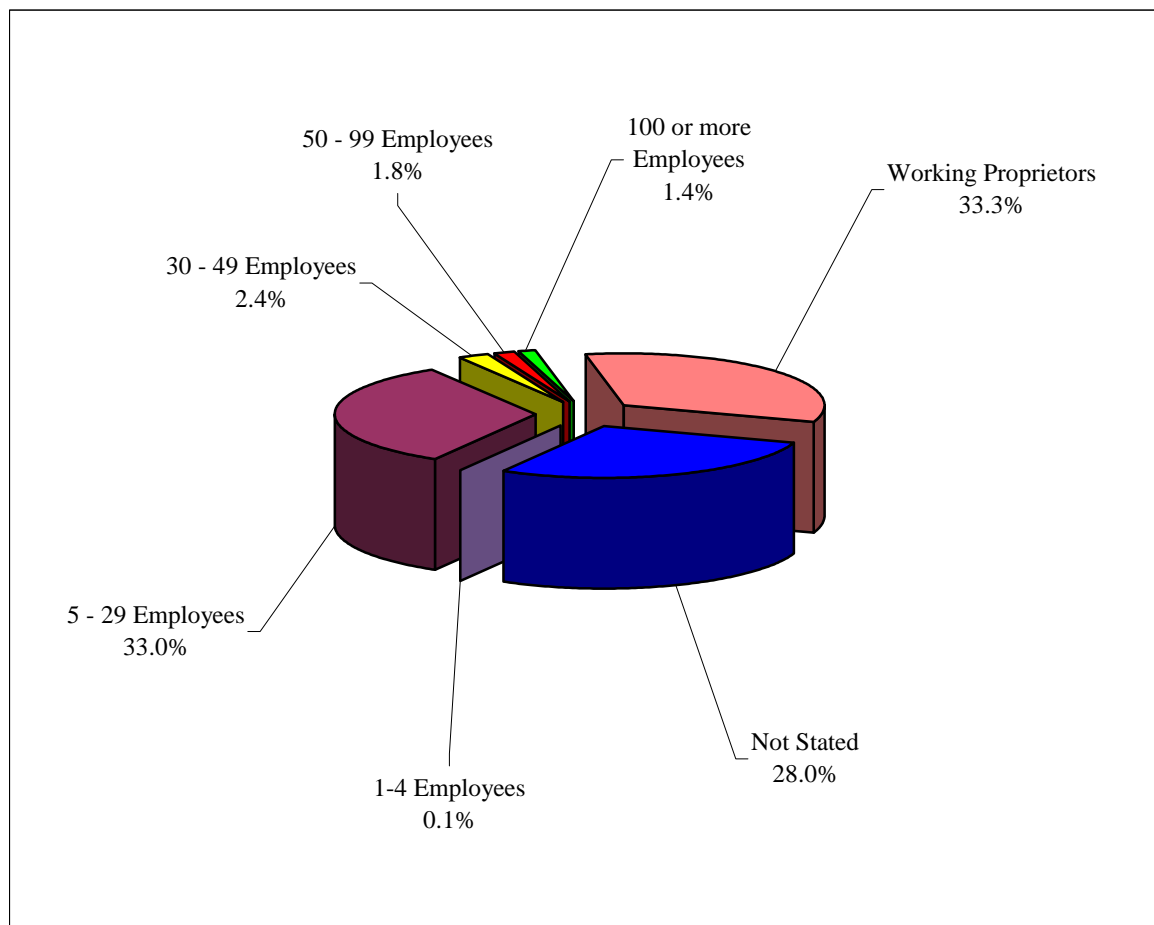


Orapa Letlhakane, North-East, Jwaneng and Ghanzi had the least number of enumerated establishments. They all had establishments below 100.

5. Employment Size Characteristics

Over 68 percent of all businesses covered in the 2006/7 Census of Enterprises and Establishments had less than 50 employees (including working proprietors), only 3.2 percent had more than 50 employees while 28 percent did not state the number of their employees. This is displayed in Table 5 and Figure 3 below.

Figure 4: The Distribution of Enumerated Establishments by Employment Size

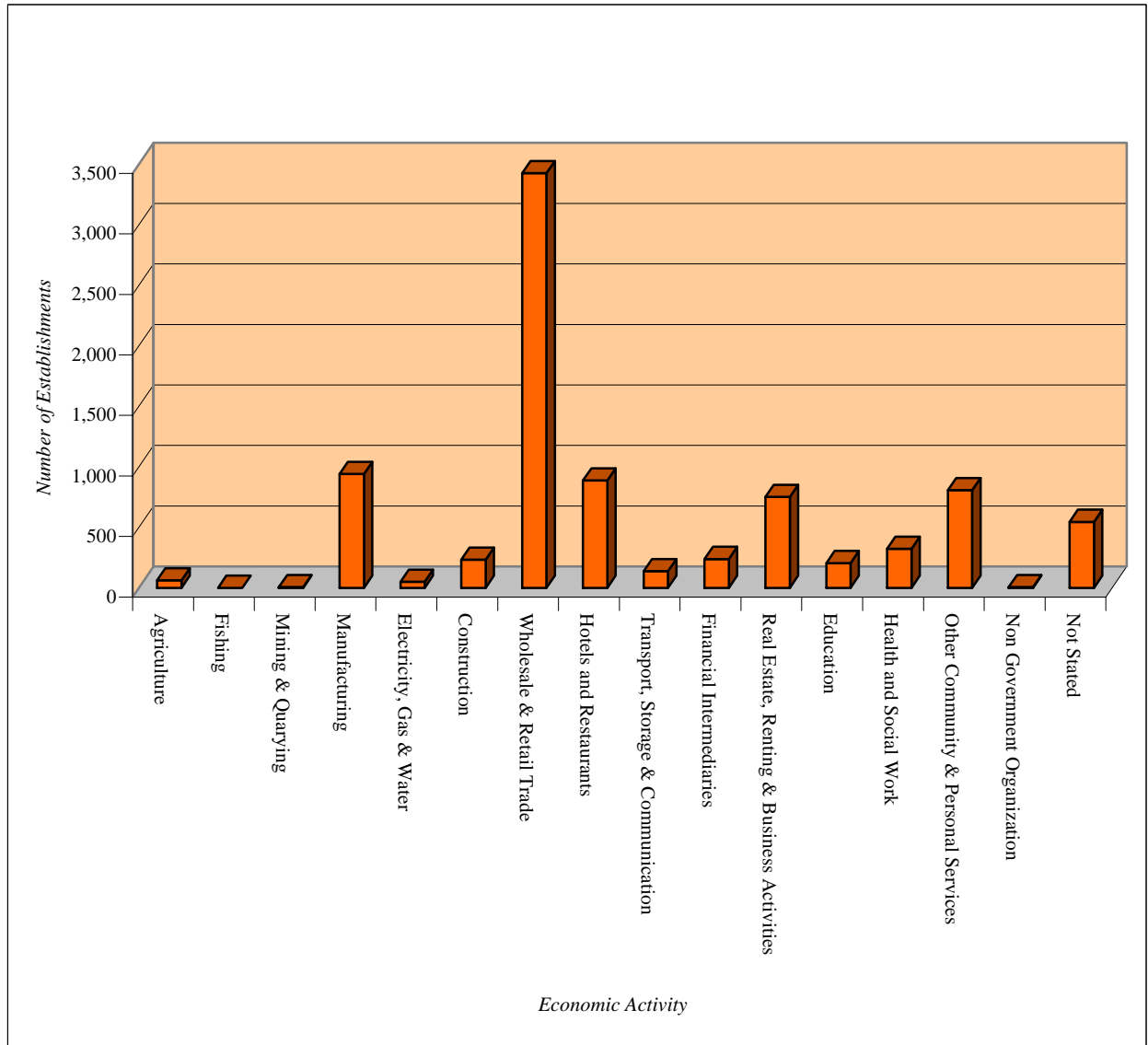


From a total of 5,926 businesses with less than 50 employees, Wholesale and Retail Businesses accounted for 44.7 percent. Manufacturing was the second most contributor with 11.5 percent, followed by Hotels and Restaurants with 10.3 percent.

6. Industry Characteristics

Figure 4 below and Table 14 show that Wholesale and Retail Trade made up the largest single component accounting for 39.8 percent of the total enumerated establishments. The Manufacturing sector was next with 10.9 percent of the total followed by Hotels and Restaurants with 10.3 percent. The Agriculture sector accounted for only 0.7 percent of all the enumerated establishments.

Figure 5: The Distribution of Enumerated Establishments by Economic Activity



A. N. Majerantie
Government Statistician

Table 1: Census of Enterprises And Establishments Enumeration Report As At End Of March 2008

Locality	Total Listed	Total Enumerated	Enumeration Status															Effective Response Rate	Response Rate (1,2&5)
			1	2	3	4	5	6	7	8	9a	9b	10	11a	11b	12	13		
Jwaneng	173	175	72		50			17	1		11	1		17		1	5	41.1	41.1
Kanye	417	422	150		136	2	3	64	3	9	37	5		2		10	1	35.5	36.3
Serowe	589	591	313		40	1	10	71	3	5	93	8	1	6	7	17	16	53.0	54.7
Ramotswa	196	209	47		26	2		8	1	1	12						112	22.5	22.5
Ramotswa Station	40	41	11		7			5			10					8		26.8	26.8
Otse	58	62	23		4						20			2			13	37.1	37.1
Mogobane	37	38	16		5						14					1	2	42.1	42.1
Lobatse	389	412	162	13	63		1	74	6		35	6				10	42	39.3	42.7
Metsimotlhabe	57	56	24		7	1		2	1		12						9	42.9	42.9
Mmopane	20	21	10	1	4	2					1					1	2	47.6	52.4
Kopong	47	45	21		13		1		1		9							46.7	48.9
Gabane	110	119	68	2	18		4		1	8	11			2		2	3	57.1	62.2
Gaborone	4,800	4,935	1,764	103	1,144	65	111	316	81	43	135	251	20	115	40	102	645	35.7	40.1
Mogoditshane	524	505	166	9	28	15	12	8	7	3	17	7					233	32.9	37.0
Tlokweng	508	365	196	1	41	13	6	15	8	5	16	5	2	3	4		50	53.7	55.6
Francistown	1,308	1,378	234	26	628	4	81	132	4	5	44	16	1	1		70	132	17.0	24.7
Molepolole	554	631	334	11	44	2	1	53	1		120	10		3	3	26	23	52.9	54.8
Mahalapye	490	506	280	70	39	1		28	2		56	4		2	1		23	55.3	69.2
Palapye	506	506	174	21	136	3	2	65			4	57			3	14	27	34.4	38.9
Maun	732	752	346	20	98	1		87			23	1				10	166	46.0	48.7
Letlhakane	291	292	68	15	73		24	33		3	36	2			11	15	12	23.3	36.6
Orapa	93	93	13	5	28		3	14		1	8	2				12	7	14.0	22.6
Mochudi	543	543	46	7	25	1		39	1	1	62	3			2	21	335	8.5	9.8
Pilane	61	61	13	2	8			3			5	2			2	7	19	21.3	24.6
Morwa	40	41	12		7						10					2	10	29.3	29.3
Rasesa	35	35	20	1	5			2			4						3	57.1	60.0
Bokaa	44	44	10		14		1	1	1	1	3					4	9	22.7	25.0
Oodi	51	56	22	7	5			4			9					9		39.3	51.8
Matebele	26	29	11		6			4			2					6		37.9	37.9
Total	12,739	12,963	4,626	314	2,702	113	260	1,045	122	85	819	380	24	153	73	348	1,899	35.7	40.1

Table 1 cont: Census of Enterprises And Establishments Enumeration Report As At End Of March 2008

Locality	Total Listed	Total Enumerated	Enumeration Status														Effective Response Rate	Response Rate (1,2&5)	
			1	2	3	4	5	6	7	8	9a	9b	10	11a	11b	12			13
Modipane	42	41	14		3			2			15					7		34.1	34.1
Mmathubudukwan	32	33	16	2	3			3			8					1		48.5	54.5
Malolwane	23	23	7		3			1	1		10					1		30.4	30.4
Thamaga	190	199	66	2	49			16			36				9		21	33.2	34.2
Moshupa	151	165	81	3	20			6		4	30	2		4		12	3	49.1	50.9
Gantsi	150	152	80	1	7		4	29			28	2					1	52.6	55.9
Kasane	116	118	55	5	25		7	18			1	1				2	4	46.6	56.8
Kazungula	61	69	26		14			9			16	3				1		37.7	37.7
Selibe Phikwe	600	629	290	2	103		16	94			78	16			3	9	18	46.1	49.0
Tonota	169	171	100	5	18			8	1		31	1				3	4	58.5	61.4
Tati Siding	50	51	24	1	9			2			13						2	47.1	49.0
Tsabong	125	146	56	17	29			11			11					20	2	38.4	50.0
Werda	36	37	12	3	13			1			5					1	2	32.4	40.5
O'maweneno	16	16	2	2	5						6					1		12.5	25.0
Draai Hoek	13	13	4		3						6							30.8	30.8
Shoshong	108	108	42	8	11		1	3		1	28			3		3	8	38.9	47.2
Kalamare	21	23	19								3						1	82.6	82.6
Tutume	139	144	69	1	29	2	1	5			35	1					1	47.9	49.3
Maitengwe	29	30	18	1	3			1			3	1				1	2	60.0	63.3
Nkange	18	21	10		5			1			4						1	47.6	47.6
Senete	21	21	11		1						5						4	52.4	52.4
Total	2,110	2,210	1,002	53	353	2	29	210	2	5	372	27	0	7	12	62	74	45.3	49.0

Table 1 cont.: Census of Enterprises And Establishments Enumeration Report As At End Of March 2008

Locality	Total Listed	Total Enumerated	Enumeration Status																Effective Response Rate	Response Rate (1,2,5,14)
			1	2	3	4	5	6	7	8	9a	9b	10	11a	11b	12	13	14		
Pitsane	63	64	11	10	16			1	1		7					10	4		17.2	32.8
Goodhope	48	51	6	4	16			3			10					8	2		11.8	19.6
Mmathethe	37	38	12	3	7				3		10					1	1		31.6	39.5
Molapowabojang	52	55	10	9	14			1			4					10			18.2	34.5
Lotlhakane	27	30	1	7	4					3	6					1	5	3	3.3	36.7
Bobonong	101	124	25	10	1			8		1	9					23	17	30	20.2	52.4
Mmadinare	110	122	32	11				7	2		14					23	16	17	20.5	49.2
Tsetsebjwe	25	27	14	1	1		1				5				1	1		3	51.9	70.4
Sefhophe	25	25	8	1							3					3	6	4	32.0	52.0
Gweta	26	28	10	1			2				6					1			35.7	46.4
Nata	57	62	32	3			4	1			20	1		1					51.6	62.9
Sebina	47	49	10	8	6						16					1	3		20.4	36.7
Mathangwana	44	44	3	4			7	1		1	11	1				4	2		6.8	31.8
Nshakashokwe	16	16	3	2							5					1			18.8	31.3
Lerala	57	57	11	7		1					5	2		1		1	13	16	19.3	59.6
Maunatlala	41	41	7	3						1	5				1		18	6	17.1	39.0
Radisele	37	34	3	4							17						8	2	8.1	24.3
Ratholo	24	24	2	5							9						4	4	8.3	45.8
Lesenepole	23	23	2	2							6						4	9	8.7	56.5
Lecheng	23	23	1	2						1	9				1		3	6	4.3	39.1
Malaka	8	8	6								1						1		75.0	75.0
Masunga	68	72	9	23				1		2	21					1	4	11	13.2	63.2
Matsiloje	15	16	12								4								80.0	80.0
Mandunyane	44	27	10				1			7	2					3	2	2	22.7	29.5
Sehitwa	22	0																	0.0	0.0
Gumare	83	85	36	7	12	2		10		1	10					4	3		43.4	51.8
Shakawe	47	0																	0.0	0.0
Etsha 6	27	27	13							2	7	1				3	1		48.1	48.1
Total	1,197	1,172	289	127	77	3	15	33	6	19	222	5	0	2	6	98	115	113	24.1	45.4

Table 2: The Number of Enumerated Establishments by Location and Legal Status

Location	Establishments (Number)	Legal Status								
		Sole Proprietor	Partnership	Registered Private Limited Company	Public Limited Company	Parastatal	Cooperative	Non-Governmental Organization	Other	Not Stated
Gaborone	2,729	333	188	1,594	59	13	4	72	32	434
Francistown	770	67	18	258	3	-	-	16	4	404
Lobatse	235	59	12	124	2	1	1	3	3	30
Selibe Phikwe	423	94	31	201	2	1	7	3	14	70
Orapa/Letlhakane	29	8	1	18	1	-	-	-	-	1
Jwaneng	89	14	6	60	1	2	-	-	-	6
Southern	319	180	21	98	1	-	5	4	1	9
South-East	363	131	42	152	4	-	3	6	6	19
Kweneng	924	346	94	401	10	1	8	13	22	29
Kgatleng	246	150	9	62	3	-	2	12	5	3
Central	1,600	746	86	499	4	6	9	31	75	144
North-East	68	31	2	25	-	-	-	2	-	8
North-West	565	162	33	319	11	1	7	12	6	14
Ghanzi	91	24	7	48	2	-	-	1	2	7
Kgalagadi	162	94	2	55	1	-	-	2	1	7
Total	8,613	2,439	552	3,914	104	25	46	177	171	1,185

Table 3: The Proportion of Enumerated Establishments by Location and Legal Status

Location	Establishments (Percent of Total)	Legal Status (Percent)								
		Sole Partnership Proprietor	Registered Private Limited Company	Public Limited Company	Parastatal	Cooperative	Non- Governmental Organization	Other	Not Stated	
Gaborone	31.7	13.7	34.1	40.7	56.7	52.0	8.7	40.7	18.7	36.6
Francistown	8.9	2.7	3.3	6.6	2.9	-	-	9.0	2.3	34.1
Lobatse	2.7	2.4	2.2	3.2	1.9	4.0	2.2	1.7	1.8	2.5
Selibe Phikwe	4.9	3.9	5.6	5.1	1.9	4.0	15.2	1.7	8.2	5.9
Orapa/Letlhakane	0.3	0.3	0.2	0.5	1.0	-	-	-	-	0.1
Jwaneng	1.0	0.6	1.1	1.5	1.0	8.0	-	-	-	0.5
Southern	3.7	7.4	3.8	2.5	1.0	-	10.9	2.3	0.6	0.8
South-East	4.2	5.4	7.6	3.9	3.8	-	6.5	3.4	3.5	1.6
Kweneng	10.7	14.2	17.0	10.2	9.6	4.0	17.4	7.3	12.9	2.4
Kgatleng	2.9	6.2	1.6	1.6	2.9	-	4.3	6.8	2.9	0.3
Central	18.6	30.6	15.6	12.7	3.8	24.0	19.6	17.5	43.9	12.2
North-East	0.8	1.3	0.4	0.6	-	-	-	1.1	-	0.7
North-West	6.6	6.6	6.0	8.2	10.6	4.0	15.2	6.8	3.5	1.2
Ghanzi	1.1	1.0	1.3	1.2	1.9	-	-	0.6	1.2	0.6
Kgalagadi	1.9	3.9	0.4	1.4	1.0	-	-	1.1	0.6	0.6
Total	100	100	100	100	100	100	100	100	100	100

Table 4: The Proportion of Enumerated Establishments by Location and Legal Status

Location	Establishments (Percent of Total)	Legal Status (Percent)								
		Sole Partnership Proprietor	Registered Private Limited Company	Public Limited Company	Parastatal	Cooperative	Non- Governmental Organization	Other	Not Stated	
Gaborone	100	12.2	6.9	58.4	2.2	0.5	0.1	2.6	1.2	15.9
Francistown	100	8.7	2.3	33.5	0.4	-	-	2.1	0.5	52.5
Lobatse	100	25.1	5.1	52.8	0.9	0.4	0.4	1.3	1.3	12.8
Selibe Phikwe	100	22.2	7.3	47.5	0.5	0.2	1.7	0.7	3.3	16.5
Orapa/Letlhakane	100	27.6	3.4	62.1	3.4	-	-	-	-	3.4
Jwaneng	100	15.7	6.7	67.4	1.1	2.2	-	-	-	6.7
Southern	100	56.4	6.6	30.7	0.3	-	1.6	1.3	0.3	2.8
South-East	100	36.1	11.6	41.9	1.1	-	0.8	1.7	1.7	5.2
Kweneng	100	37.4	10.2	43.4	1.1	0.1	0.9	1.4	2.4	3.1
Kgatleng	100	61.0	3.7	25.2	1.2	-	0.8	4.9	2.0	1.2
Central	100	46.6	5.4	31.2	0.3	0.4	0.6	1.9	4.7	9.0
North-East	100	45.6	2.9	36.8	-	-	-	2.9	-	11.8
North-West	100	28.7	5.8	56.5	1.9	0.2	1.2	2.1	1.1	2.5
Ghanzi	100	26.4	7.7	52.7	2.2	-	0.0	1.1	2.2	7.7
Kgalagadi	100	58.0	1.2	34.0	0.6	-	0.0	1.2	0.6	4.3
Total	100	28.3	6.4	45.4	1.2	0.3	0.5	2.1	2.0	13.8

Table 5: The Number of Enumerated Establishments by Location and Employment Size

Location	Establishments (Number)	Number of Employees					WP	Not Stated
		1-4	5 - 29	30 - 49	50 - 99	100+		
Gaborone	2,729	-	1,136	96	85	86	658	668
Francistown	770	-	185	8	7	7	106	457
Lobatse	235	1	91	7	3	3	86	44
Selibe Phikwe	423	-	127	5	7	6	144	134
Orapa/Letlhakane	29	-	13	2	3	2	6	3
Jwaneng	89	-	38	6	3	1	28	13
Southern	319	-	79	2	1	-	172	65
South-East	363	-	132	11	7	7	130	76
Kweneng	924	3	290	19	13	2	380	217
Kgatleng	246	1	51	5	1	-	118	70
Central	1,600	-	409	20	8	5	683	475
North-East	68	-	13	-	1	-	33	21
North-West	565	-	211	25	15	4	191	119
Ghanzi	91	-	28	3	1	-	46	13
Kgalagadi	162	1	37	1	1	-	89	33
Total	8,613	6	2,840	210	156	123	2,870	2,408

WP = Working Proprietors i.e. owners and/or family members working in the business

Table 6: The Proportion of Enumerated Establishments by Location and Employment Size

Location	Establishments (Percent of Total)	Number of Employees					WP	Not Stated
		1-4	5 - 29	30 - 49	50 - 99	100+		
Gaborone	31.7	-	40.0	45.7	54.5	69.9	22.9	27.7
Francistown	8.9	-	6.5	3.8	4.5	5.7	3.7	19.0
Lobatse	2.7	16.7	3.2	3.3	1.9	2.4	3.0	1.8
Selibe Phikwe	4.9	-	4.5	2.4	4.5	4.9	5.0	5.6
Orapa/Letlhakane	0.3	-	0.5	1.0	1.9	1.6	0.2	0.1
Jwaneng	1.0	-	1.3	2.9	1.9	0.8	1.0	0.5
Southern	3.7	-	2.8	1.0	0.6	-	6.0	2.7
South-East	4.2	-	4.6	5.2	4.5	5.7	4.5	3.2
Kweneng	10.7	50.0	10.2	9.0	8.3	1.6	13.2	9.0
Kgatleng	2.9	16.7	1.8	2.4	0.6	-	4.1	2.9
Central	18.6	-	14.4	9.5	5.1	4.1	23.8	19.7
North-East	0.8	-	0.5	-	0.6	-	1.1	0.9
North-West	6.6	-	7.4	11.9	9.6	3.3	6.7	4.9
Ghanzi	1.1	-	1.0	1.4	0.6	-	1.6	0.5
Kgalagadi	1.9	16.7	1.3	0.5	0.6	-	3.1	1.4
Total	100	100	100	100	100	100	100	100

WP = Working Proprietors i.e. owners and/or family members working in the business

Table 7: The Proportion of Enumerated Establishments by Location and Employment Size

Location	Establishments (Percent of Total)	Number of Employees					WP	Not Stated
		1-4	5 - 29	30 - 49	50 - 99	100+		
Gaborone	100	-	41.6	3.5	3.1	3.2	24.1	24.5
Francistown	100	-	24.0	1.0	0.9	0.9	13.8	59.4
Lobatse	100	0.4	38.7	3.0	1.3	1.3	36.6	18.7
Selibe Phikwe	100	-	30.0	1.2	1.7	1.4	34.0	31.7
Orapa/Letlhakane	100	-	44.8	6.9	10.3	6.9	20.7	10.3
Jwaneng	100	-	42.7	6.7	3.4	1.1	31.5	14.6
Southern	100	-	24.8	0.6	0.3	-	53.9	20.4
South-East	100	-	36.4	3.0	1.9	1.9	35.8	20.9
Kweneng	100	0.3	31.4	2.1	1.4	0.2	41.1	23.5
Kgatleng	100	0.4	20.7	2.0	0.4	-	48.0	28.5
Central	100	-	25.6	1.3	0.5	0.3	42.7	29.7
North-East	100	-	19.1	-	1.5	-	48.5	30.9
North-West	100	-	37.3	4.4	2.7	0.7	33.8	21.1
Ghanzi	100	-	30.8	3.3	1.1	-	50.5	14.3
Kgalagadi	100	0.6	22.8	0.6	0.6	-	54.9	20.4
Total	100	0.1	33.0	2.4	1.8	1.4	33.3	28.0

WP = Working Proprietors i.e. owners and/or family members working in the business

Table 8: The Number of Enumerated Establishments by Location and Turnover

Location	Establishments (Number)	Annual Turnover (Pula)							
		< 10,000	10,000 to 50,000	50,001 to 1,000,000	1,000,001 to 5,000,000	5,000,001 to 10,000,000	10,000,001 to 20,000,000	> 20,000,000	Not Stated
Gaborone	2,729	25	100	777	406	124	81	118	1,098
Francistown	770	5	16	118	48	7	7	6	563
Lobatse	235	0	9	63	14	3	6	6	134
Selibe Phikwe	423	11	34	124	33	8	7	10	196
Orapa/Letlhakane	29	-	1	7	6	2	-	2	11
Jwaneng	89	-	2	31	15	2	1	3	35
Southern	319	12	50	70	13	3	1	-	170
South-East	363	3	30	135	20	9	5	5	156
Kweneng	924	26	126	314	60	6	7	8	377
Kgatleng	246	3	26	74	11	-	-	-	132
Central	1,600	39	165	466	84	16	9	15	806
North-East	68	2	5	13	5	-	-	-	43
North-West	565	4	23	179	63	13	11	13	259
Ghanzi	91	1	11	22	10	1	2	3	41
Kgalagadi	162	1	12	37	5	1	-	1	105
Total	8,613	132	610	2,430	793	195	137	190	4,126

Table 9: The Number of Enumerated Establishments by Location and Turnover

Location	Establishments (Percent of Total)	Annual Turnover (Pula)							
		< 10,000	10,000 to 50,000	50,001 to 1,000,000	1,000,001 to 5,000,000	5,000,001 to 10,000,000	10,00,001 to 20,000,000	> 20,000,000	Not Stated
Gaborone	31.7	18.9	16.4	32.0	51.2	63.6	59.1	62.1	26.6
Francistown	8.9	3.8	2.6	4.9	6.1	3.6	5.1	3.2	13.6
Lobatse	2.7	-	1.5	2.6	1.8	1.5	4.4	3.2	3.2
Selibe Phikwe	4.9	8.3	5.6	5.1	4.2	4.1	5.1	5.3	4.8
Orapa/Letlhakane	0.3	-	0.2	0.3	0.8	1.0	-	1.1	0.3
Jwaneng	1.0	-	0.3	1.3	1.9	1.0	0.7	1.6	0.8
Southern	3.7	9.1	8.2	2.9	1.6	1.5	0.7	-	4.1
South-East	4.2	2.3	4.9	5.6	2.5	4.6	3.6	2.6	3.8
Kweneng	10.7	19.7	20.7	12.9	7.6	3.1	5.1	4.2	9.1
Kgatleng	2.9	2.3	4.3	3.0	1.4	-	-	-	3.2
Central	18.6	29.5	27.0	19.2	10.6	8.2	6.6	7.9	19.5
North-East	0.8	1.5	0.8	0.5	0.6	0.0	-	-	1.0
North-West	6.6	3.0	3.8	7.4	7.9	6.7	8.0	6.8	6.3
Ghanzi	1.1	0.8	1.8	0.9	1.3	0.5	1.5	1.6	1.0
Kgalagadi	1.9	0.8	2.0	1.5	0.6	0.5	-	0.5	2.5
Total	100	100	100	100	100	100	100	100	100

Table 10: The Proportion of Enumerated Establishments by Location and Turnover

Location	Establishments (Percent of Total)	Annual Turnover (Pula)							
		< 10,000	10,000	50,001	1,000,001	5,000,001	10,00,001	> 20,000,000	Not Stated
			to 50,000	to 1,000,000	to 5,000,000	to 10,000,000	to 20,000,000		
Gaborone	100	0.9	3.7	28.5	14.9	4.5	3.0	4.3	40.2
Francistown	100	0.6	2.1	15.3	6.2	0.9	0.9	0.8	73.1
Lobatse	100	-	3.8	26.8	6.0	1.3	2.6	2.6	57.0
Selibe Phikwe	100	2.6	8.0	29.3	7.8	1.9	1.7	2.4	46.3
Orapa/Letlhakane	100	-	3.4	24.1	20.7	6.9	-	6.9	37.9
Jwaneng	100	-	2.2	34.8	16.9	2.2	1.1	3.4	39.3
Southern	100	3.8	15.7	21.9	4.1	0.9	0.3	-	53.3
South-East	100	0.8	8.3	37.2	5.5	2.5	1.4	1.4	43.0
Kweneng	100	2.8	13.6	34.0	6.5	0.6	0.8	0.9	40.8
Kgatleng	100	1.2	10.6	30.1	4.5	-	-	-	53.7
Central	100	2.4	10.3	29.1	5.3	1.0	0.6	0.9	50.4
North-East	100	2.9	7.4	19.1	7.4	-	-	-	63.2
North-West	100	0.7	4.1	31.7	11.2	2.3	1.9	2.3	45.8
Ghanzi	100	1.1	12.1	24.2	11.0	1.1	2.2	3.3	45.1
Kgalagadi	100	0.6	7.4	22.8	3.1	0.6	-	0.6	64.8
Total	100	1.5	7.1	28.2	9.2	2.3	1.6	2.2	47.9

Table 11: The Number of Enumerated Establishments by Economic Activity and Location

Economic Activity	Establishments (Number)	Location					
		Gaborone	Francistown	Lobatse	Selibe Phikwe	Orapa Letlhakane	Jwaneng
Agriculture	62	6	2	2	1	1	1
Fishing	-	-	-	-	-	-	-
Mining and Quarrying	6	2	3	-	-	-	-
Manufacturing	940	310	93	32	38	5	9
Electricity, Gas and Water	50	10	17	1	3	-	-
Construction	233	126	34	1	7	4	8
Wholesale and Retail Trade	3,426	840	278	112	195	8	43
Hotels and Restaurants	887	108	68	22	50	2	6
Transport, Storage and Communication	137	71	6	1	9	-	1
Financial Intermediaries	238	106	30	6	11	-	5
Real Estate, Renting & Business Activities	750	477	73	5	20	4	2
Education	204	52	15	5	8	-	4
Health and Social Work	322	141	26	10	15	1	3
Other Community and Personal Services	807	202	76	15	37	4	3
International Organizations	6	6	-	-	-	-	-
Not Stated	545	272	49	23	29	-	4
Total	8,613	2,729	770	235	423	29	89

Table 11 cont: The Number of Enumerated Establishments by Economic Activity and Location

Economic Activity	Establishments (Number)	Location				
		Southern	South-East	Kweneng	Kgatleng	Central
Agriculture	62	4	2	5	11	16
Fishing	-	-	-	-	-	-
Mining and Quarrying	6	-	-	-	-	-
Manufacturing	940	29	36	107	34	165
Electricity, Gas and Water	50	-	2	4	2	7
Construction	233	2	10	21	1	10
Wholesale and Retail Trade	3,426	169	158	393	96	758
Hotels and Restaurants	887	55	55	151	46	204
Transport, Storage and Communication	137	-	6	4	-	8
Financial Intermediaries	238	1	6	13	-	30
Real Estate, Renting & Business Activities	750	5	10	38	4	46
Education	204	3	9	33	10	36
Health and Social Work	322	15	14	34	5	38
Other Community and Personal Services	807	30	41	95	32	192
International Organizations	6	-	-	-	-	-
Not Stated	545	6	14	26	5	90
Total	8,613	319	363	924	246	1,600

Table 11 cont.: The Number of Enumerated Establishments by Economic Activity and Location

Economic Activity	Establishments (Number)	Location			
		North-East	North-West	Ghanzi	Kgalagadi
Agriculture	62	-	7	1	3
Fishing	-	-	-	-	-
Mining and Quarrying	6	-	1	-	-
Manufacturing	940	11	56	9	6
Electricity, Gas and Water	50	-	4	-	-
Construction	233	-	8	-	1
Wholesale and Retail Trade	3,426	32	214	39	91
Hotels and Restaurants	887	6	68	10	36
Transport, Storage and Communication	137	1	30	-	-
Financial Intermediaries	238	-	25	5	-
Real Estate, Renting & Business Activities	750	3	52	8	3
Education	204	4	18	7	-
Health and Social Work	322	1	16	2	1
Other Community and Personal Services	807	8	51	7	14
International Organizations	6	-	-	-	-
Not Stated	545	2	15	3	7
Total	8,613	68	565	91	162

Table 12: The Proportion of Enumerated Establishments by Economic Activity and Location

Economic Activity	Establishments (Percent of Total)	Location					
		Gaborone	Francistown	Lobatse	Selibe Phikwe	Orapa Letlhakane	Jwaneng
Agriculture	0.7	0.2	0.3	0.9	0.2	3.4	1.1
Fishing	-	-	-	-	-	-	-
Mining and Quarrying	0.1	0.1	0.4	-	-	-	-
Manufacturing	10.9	11.4	12.1	13.6	9.0	17.2	10.1
Electricity, Gas and Water	0.6	0.4	2.2	0.4	0.7	-	-
Construction	2.7	4.6	4.4	0.4	1.7	13.8	9.0
Wholesale and Retail Trade	39.8	30.8	36.1	47.7	46.1	27.6	48.3
Hotels and Restaurants	10.3	4.0	8.8	9.4	11.8	6.9	6.7
Transport, Storage and Communication	1.6	2.6	0.8	0.4	2.1	-	1.1
Financial Intermediaries	2.8	3.9	3.9	2.6	2.6	-	5.6
Real Estate, Renting & Business Activities	8.7	17.5	9.5	2.1	4.7	13.8	2.2
Education	2.4	1.9	1.9	2.1	1.9	-	4.5
Health and Social Work	3.7	5.2	3.4	4.3	3.5	3.4	3.4
Other Community and Personal Services	9.4	7.4	9.9	6.4	8.7	13.8	3.4
International Organizations	0.1	0.2	-	-	-	-	-
Not Stated	6.3	10.0	6.4	9.8	6.9	-	4.5
Total	100	100	100	100	100	100	100

Table 12 cont.: The Proportion of Enumerated Establishments by Economic Activity and Location

Economic Activity	Establishments (Percent of Total)	Location				
		Southern	South-East	Kweneng	Kgatleng	Central
Agriculture	0.7	1.3	0.6	0.5	4.5	1.0
Fishing	-	-	-	-	-	-
Mining and Quarrying	0.1	-	-	-	-	-
Manufacturing	10.9	9.1	9.9	11.6	13.8	10.3
Electricity, Gas and Water	0.6	-	0.6	0.4	0.8	0.4
Construction	2.7	0.6	2.8	2.3	0.4	0.6
Wholesale and Retail Trade	39.8	53.0	43.5	42.5	39.0	47.4
Hotels and Restaurants	10.3	17.2	15.2	16.3	18.7	12.8
Transport, Storage and Communication	1.6	-	1.7	0.4	-	0.5
Financial Intermediaries	2.8	0.3	1.7	1.4	-	1.9
Real Estate, Renting & Business Activities	8.7	1.6	2.8	4.1	1.6	2.9
Education	2.4	0.9	2.5	3.6	4.1	2.3
Health and Social Work	3.7	4.7	3.9	3.7	2.0	2.4
Other Community and Personal Services	9.4	9.4	11.3	10.3	13.0	12.0
International Organizations	0.1	-	-	-	-	-
Not Stated	6.3	1.9	3.9	2.8	2.0	5.6
Total	100	100	100	100	100	100

Table 12 cont.: The Proportion of Enumerated Establishments by Economic Activity and Location

Economic Activity	Establishments (Percent of Total)	Location			
		North-East	North-West	Ghanzi	Kgalagadi
Agriculture	0.7	-	1.2	1.1	1.9
Fishing	-	-	-	-	-
Mining and Quarrying	0.1	-	0.2	-	-
Manufacturing	10.9	16.2	9.9	9.9	3.7
Electricity, Gas and Water	0.6	-	0.7	-	-
Construction	2.7	-	1.4	-	0.6
Wholesale and Retail Trade	39.8	47.1	37.9	42.9	56.2
Hotels and Restaurants	10.3	8.8	12.0	11.0	22.2
Transport, Storage and Communication	1.6	1.5	5.3	-	-
Financial Intermediaries	2.8	-	4.4	5.5	-
Real Estate, Renting & Business Activities	8.7	4.4	9.2	8.8	1.9
Education	2.4	5.9	3.2	7.7	-
Health and Social Work	3.7	1.5	2.8	2.2	0.6
Other Community and Personal Services	9.4	11.8	9.0	7.7	8.6
International Organizations	0.1	-	-	-	-
Not Stated	6.3	2.9	2.7	3.3	4.3
Total	100	100	100	100	100

Table 13: The Proportion of Enumerated Establishments by Economic Activity and Location

Economic Activity	Establishments (Percent of Total)	Location					
		Gaborone	Francistown	Lobatse	Selibe Phikwe	Orapa Letlhakane	Jwaneng
Agriculture	100	9.7	3.2	3.2	1.6	1.6	1.6
Fishing	-	-	-	-	-	-	-
Mining and Quarrying	100	33.3	50.0	-	-	-	-
Manufacturing	100	33.0	9.9	3.4	4.0	0.5	1.0
Electricity, Gas and Water	100	20.0	34.0	2.0	6.0	-	-
Construction	100	54.1	14.6	0.4	3.0	1.7	3.4
Wholesale and Retail Trade	100	24.5	8.1	3.3	5.7	0.2	1.3
Hotels and Restaurants	100	12.2	7.7	2.5	5.6	0.2	0.7
Transport, Storage and Communication	100	51.8	4.4	0.7	6.6	-	0.7
Financial Intermediaries	100	44.5	12.6	2.5	4.6	-	2.1
Real Estate, Renting & Business Activities	100	63.6	9.7	0.7	2.7	0.5	0.3
Education	100	25.5	7.4	2.5	3.9	-	2.0
Health and Social Work	100	43.8	8.1	3.1	4.7	0.3	0.9
Other Community and Personal Services	100	25.0	9.4	1.9	4.6	0.5	0.4
International Organizations	100	100.0	-	-	-	-	-
Not Stated	100	49.9	9.0	4.2	5.3	-	0.7
Total	100	31.7	8.9	2.7	4.9	0.3	1.0

Table 13 cont: The Proportion of Enumerated Establishments by Economic Activity and Location

Economic Activity	Establishments (Percent of Total)	Location				
		Southern	South-East	Kweneng	Kgatleng	Central
Agriculture	100	6.5	3.2	8.1	17.7	25.8
Fishing	-	-	-	-	-	-
Mining and Quarrying	100	-	-	-	-	-
Manufacturing	100	3.1	3.8	11.4	3.6	17.6
Electricity, Gas and Water	100	-	4.0	8.0	4.0	14.0
Construction	100	0.9	4.3	9.0	0.4	4.3
Wholesale and Retail Trade	100	4.9	4.6	11.5	2.8	22.1
Hotels and Restaurants	100	6.2	6.2	17.0	5.2	23.0
Transport, Storage and Communication	100	-	4.4	2.9	-	5.8
Financial Intermediaries	100	0.4	2.5	5.5	-	12.6
Real Estate, Renting & Business Activities	100	0.7	1.3	5.1	0.5	6.1
Education	100	1.5	4.4	16.2	4.9	17.6
Health and Social Work	100	4.7	4.3	10.6	1.6	11.8
Other Community and Personal Services	100	3.7	5.1	11.8	4.0	23.8
International Organizations	100	-	-	-	-	-
Not Stated	100	1.1	2.6	4.8	0.9	16.5
Total	100	3.7	4.2	10.7	2.9	18.6

Table 13 cont.: The Proportion of Enumerated Establishments by Economic Activity and Location

Economic Activity	Establishments (Percent of Total)	Location			
		North-East	North-West	Ghanzi	Kgalagadi
Agriculture	100	-	11.3	1.6	4.8
Fishing	-	-	-	-	-
Mining and Quarrying	100	-	16.7	-	-
Manufacturing	100	1.2	6.0	1.0	0.6
Electricity, Gas and Water	100	-	8.0	-	-
Construction	100	-	3.4	-	0.4
Wholesale and Retail Trade	100	0.9	6.2	1.1	2.7
Hotels and Restaurants	100	0.7	7.7	1.1	4.1
Transport, Storage and Communication	100	0.7	21.9	-	-
Financial Intermediaries	100	-	10.5	2.1	-
Real Estate, Renting & Business Activities	100	0.4	6.9	1.1	0.4
Education	100	2.0	8.8	3.4	-
Health and Social Work	100	0.3	5.0	0.6	0.3
Other Community and Personal Services	100	1.0	6.3	0.9	1.7
International Organizations	100	-	-	-	-
Not Stated	100	0.4	2.8	0.6	1.3
Total	100	0.8	6.6	1.1	1.9

Table 14: The Number of Enumerated Establishments by Economic Activity and Employment Size

Economic Activity	Establishments (Number)	Number of Employees					WP	Not Stated
		1-4	5 - 29	30 - 49	50 - 99	100+		
Agriculture	62	-	21	6	1	1	21	12
Fishing	-	-	-	-	-	-	-	-
Mining and Quarrying	6	-	1	1	1	1	-	2
Manufacturing	940	-	372	45	32	26	263	202
Electricity, Gas and Water	50	-	18	-	5	-	5	22
Construction	233	-	96	16	21	20	31	49
Wholesale and Retail Trade	3,426	3	1,224	77	41	27	1,344	710
Hotels and Restaurants	887	1	211	9	6	8	389	263
Transport, Storage and Communication	137	-	68	12	9	5	25	18
Financial Intermediaries	238	-	68	3	5	2	88	72
Real Estate, Renting & Business Activities	750	-	281	15	14	26	242	172
Education	204	-	89	14	12	1	50	38
Health and Social Work	322	-	127	2	5	1	131	56
Other Community and Personal Services	807	2	210	8	3	1	228	355
International Organizations	6	-	3	-	-	-	3	-
Not Stated	545	-	51	2	1	4	50	437
Total	8,613	6	2,840	210	156	123	2,870	2,408

WP = Working Proprietors i.e. owners and/or family members working in the business

Table 15: The Proportion of Enumerated Establishments by Economic Activity and Employment Size

Economic Activity	Establishments (Percent of Total)	Number of Employees					WP	Not Stated
		1-4	5 - 29	30 - 49	50 - 99	100+		
Agriculture	0.7	-	0.7	2.9	0.6	0.8	0.7	0.5
Fishing	-	-	-	-	-	-	-	-
Mining and Quarrying	0.1	-	-	0.5	0.6	0.8	-	0.1
Manufacturing	10.9	-	13.1	21.4	20.5	21.1	9.2	8.4
Electricity, Gas and Water	0.6	-	0.6	-	3.2	-	0.2	0.9
Construction	2.7	-	3.4	7.6	13.5	16.3	1.1	2.0
Wholesale and Retail Trade	39.8	50.0	43.1	36.7	26.3	22.0	46.8	29.5
Hotels and Restaurants	10.3	16.7	7.4	4.3	3.8	6.5	13.6	10.9
Transport, Storage and Communication	1.6	-	2.4	5.7	5.8	4.1	0.9	0.7
Financial Intermediaries	2.8	-	2.4	1.4	3.2	1.6	3.1	3.0
Real Estate, Renting & Business Activities	8.7	-	9.9	7.1	9.0	21.1	8.4	7.1
Education	2.4	-	3.1	6.7	7.7	0.8	1.7	1.6
Health and Social Work	3.7	-	4.5	1.0	3.2	0.8	4.6	2.3
Other Community and Personal Services	9.4	33.3	7.4	3.8	1.9	0.8	7.9	14.7
International Organizations	0.1	-	0.1	-	-	-	0.1	-
Not Stated	6.3	-	1.8	1.0	0.6	3.3	1.7	18.1
Total	100	100	100	100	100	100	100	100

WP = Working Proprietors i.e. owners and/or family members working in the business

Table 16: The Proportion of Enumerated Establishments by Economic Activity and Employment Size

Economic Activity	Establishments (Percent of Total)	Number of Employees					WP	Not Stated
		1-4	5 - 29	30 - 49	50 - 99	100+		
Agriculture	100	-	33.9	9.7	1.6	1.6	33.9	19.4
Fishing	-	-	-	-	-	-	-	-
Mining and Quarrying	100	-	16.7	16.7	16.7	16.7	-	33.3
Manufacturing	100	-	39.6	4.8	3.4	2.8	28.0	21.5
Electricity, Gas and Water	100	-	36.0	-	10.0	-	10.0	44.0
Construction	100	-	41.2	6.9	9.0	8.6	13.3	21.0
Wholesale and Retail Trade	100	0.1	35.7	2.2	1.2	0.8	39.2	20.7
Hotels and Restaurants	100	0.1	23.8	1.0	0.7	0.9	43.9	29.7
Transport, Storage and Communication	100	-	49.6	8.8	6.6	3.6	18.2	13.1
Financial Intermediaries	100	-	28.6	1.3	2.1	0.8	37.0	30.3
Real Estate, Renting & Business Activities	100	-	37.5	2.0	1.9	3.5	32.3	22.9
Education	100	-	43.6	6.9	5.9	0.5	24.5	18.6
Health and Social Work	100	-	39.4	0.6	1.6	0.3	40.7	17.4
Other Community and Personal Services	100	0.2	26.0	1.0	0.4	0.1	28.3	44.0
International Organizations	100	-	50.0	-	-	-	50.0	-
Not Stated	100	-	9.4	0.4	0.2	0.7	9.2	80.2
Total	100	0.1	33.0	2.4	1.8	1.4	33.3	28.0

WP = Working Proprietors i.e. owners and/or family members working in the business

Table 17: The Number of Enumerated Establishments by Economic Activity and Legal Status

Economic Activity	Establishments (Number)	Legal Status								
		Sole Proprietor	Partnership	Registered Private Limited Company	Public Limited Company	Parastatal	Cooperative	Non-Governmental Organization	Other	Not Stated
Agriculture	62	30	2	27	-	-	1	1	0	1
Fishing	-	-	-	-	-	-	-	-	-	-
Mining and Quarrying	6	-	-	4	-	-	-	-	-	2
Manufacturing	940	261	72	477	14	2	4	3	3	104
Electricity, Gas and Water	50	3	1	23	3	4	1	-	-	15
Construction	233	14	11	170	10	-	1	-	1	26
Wholesale and Retail Trade	3,426	998	221	1,852	27	2	25	5	2	294
Hotels and Restaurants	887	529	68	201	8	-	4	2	5	70
Transport, Storage & Communication	137	6	16	95	5	5	-	-	2	8
Financial Intermediaries	238	30	15	129	11	2	4	3	1	43
Real Estate	750	112	55	464	16	5	-	9	4	85
Education	204	38	14	70	2	3	2	37	23	15
Health and Social Work	322	82	16	146	4	-	1	33	11	29
Other Community & Personal Services	807	303	50	192	2	1	1	73	113	72
International Organizations	6	-	-	-	-	-	-	4	2	0
Not Stated	545	33	11	64	2	1	2	7	4	421
Total	8,613	2,439	552	3,914	104	25	46	177	171	1,185

Table 18: The Proportion of Enumerated Establishments by Economic Activity and Legal Status

Economic Activity	Establishments (Percent of Total)	Legal Status								
		Sole Proprietor	Partnership	Registered Private Limited Company	Public Limited Company	Parastatal	Cooperative	Non-Governmental Organization	Other	Not Stated
Agriculture	0.7	1.2	0.4	0.7	-	-	2.2	0.6	-	0.1
Fishing	-	-	-	-	-	-	-	-	-	-
Mining and Quarrying	0.1	-	-	0.1	-	-	-	-	-	0.2
Manufacturing	10.9	10.7	13.0	12.2	13.5	8.0	8.7	1.7	1.8	8.8
Electricity, Gas and Water	0.6	0.1	0.2	0.6	2.9	16.0	2.2	-	-	1.3
Construction	2.7	0.6	2.0	4.3	9.6	-	2.2	-	0.6	2.2
Wholesale and Retail Trade	39.8	40.9	40.0	47.3	26.0	8.0	54.3	2.8	1.2	24.8
Hotels and Restaurants	10.3	21.7	12.3	5.1	7.7	-	8.7	1.1	2.9	5.9
Transport, Storage & Communication	1.6	0.2	2.9	2.4	4.8	20.0	-	-	1.2	0.7
Financial Intermediaries	2.8	1.2	2.7	3.3	10.6	8.0	8.7	1.7	0.6	3.6
Real Estate	8.7	4.6	10.0	11.9	15.4	20.0	-	5.1	2.3	7.2
Education	2.4	1.6	2.5	1.8	1.9	12.0	4.3	20.9	13.5	1.3
Health and Social Work	3.7	3.4	2.9	3.7	3.8	-	2.2	18.6	6.4	2.4
Other Community & Personal Services	9.4	12.4	9.1	4.9	1.9	4.0	2.2	41.2	66.1	6.1
International Organizations	0.1	-	-	-	-	-	-	2.3	1.2	-
Not Stated	6.3	1.4	2.0	1.6	1.9	4.0	4.3	4.0	2.3	35.5
Total	100	100	100	100	100	100	100	100	100	100

Table 19: The Proportion of Enumerated Establishments by Economic Activity and Legal Status

Economic Activity	Establishments (Percent of Total)	Legal Status								
		Sole Proprietor	Partnership	Registered Private Limited Company	Public Limited Company	Parastatal	Cooperative	Non- Governmental Organization	Other	Not Stated
Agriculture	100	48.4	3.2	43.5	-	-	1.6	1.6	-	1.6
Fishing	-	-	-	-	-	-	-	-	-	-
Mining and Quarrying	100	-	-	66.7	-	-	-	-	-	33.3
Manufacturing	100	27.8	7.7	50.7	1.5	0.2	0.4	0.3	0.3	11.1
Electricity, Gas and Water	100	6.0	2.0	46.0	6.0	8.0	2.0	-	-	30.0
Construction	100	6.0	4.7	73.0	4.3	-	0.4	-	0.4	11.2
Wholesale and Retail Trade	100	29.1	6.5	54.1	0.8	0.1	0.7	0.1	0.1	8.6
Hotels and Restaurants	100	59.6	7.7	22.7	0.9	-	0.5	0.2	0.6	7.9
Transport, Storage & Communication	100	4.4	11.7	69.3	3.6	3.6	-	-	1.5	5.8
Financial Intermediaries	100	12.6	6.3	54.2	4.6	0.8	1.7	1.3	0.4	18.1
Real Estate	100	14.9	7.3	61.9	2.1	0.7	-	1.2	0.5	11.3
Education	100	18.6	6.9	34.3	1.0	1.5	1.0	18.1	11.3	7.4
Health and Social Work	100	25.5	5.0	45.3	1.2	-	0.3	10.2	3.4	9.0
Other Community & Personal Services	100	37.5	6.2	23.8	0.2	0.1	0.1	9.0	14.0	8.9
International Organizations	100	-	-	-	-	-	-	66.7	33.3	-
Not Stated	100	6.1	2.0	11.7	0.4	0.2	0.4	1.3	0.7	77.2
Total	100	28.3	6.4	45.4	1.2	0.3	0.5	2.1	2.0	13.8

Table 20: The Number of Enumerated Establishments by Location and Turnover

Economic Activity	Establishments (Number)	Annual Turnover (Pula)							
		< 10,000	10,000	50,001	1,000,001	5,000,001	10,00,001	> 20,000,000	Not Stated
			to 50,000	to 1,000,000	to 5,000,000	to 10,000,000	to 20,000,000		
Agriculture	62	3	11	14	3	3	-	-	28
Fishing	-	-	-	-	-	-	-	-	-
Mining and Quarrying	6	-	-	-	1	1	1	-	3
Manufacturing	940	25	95	271	87	32	18	39	373
Electricity, Gas and Water	50	-	-	7	6	3	1	2	31
Construction	233	2	4	59	39	16	9	16	88
Wholesale and Retail Trade	3,426	31	208	1,043	370	72	65	95	1,542
Hotels and Restaurants	887	14	81	295	41	12	5	4	435
Transport, Storage & Communication	137	1	2	27	34	9	10	4	50
Financial Intermediaries	238	2	17	58	19	6	5	6	125
Real Estate, Renting & Business Activities	750	7	48	253	109	23	15	12	283
Education	204	3	19	72	19	7	1	2	81
Health and Social Work	322	3	20	115	33	6	4	4	137
Other Community & Personal Services	807	37	99	179	21	3	2	1	465
International Organizations	6	-	-	1	1	-	-	-	4
Not Stated	545	4	6	36	10	2	1	5	481
Total	8,613	132	610	2,430	793	195	137	190	4,126

Table 21: The Proportion of Enumerated Establishments by Location and Turnover

Economic Activity	Establishments (Percent of Total)	Annual Turnover (Pula)							
		< 10,000	10,000	50,001	1,000,001	5,000,001	10,00,001	> 20,000,000	Not Stated
			to 50,000	to 1,000,000	to 5,000,000	to 10,000,000	to 20,000,000		
Agriculture	0.7	2.3	1.8	0.6	0.4	1.5	-	-	0.7
Fishing	-	-	-	-	-	-	-	-	-
Mining and Quarrying	0.1	-	-	-	0.1	0.5	0.7	-	0.1
Manufacturing	10.9	18.9	15.6	11.2	11.0	16.4	13.1	20.5	9.0
Electricity, Gas and Water	0.6	-	-	0.3	0.8	1.5	0.7	1.1	0.8
Construction	2.7	1.5	0.7	2.4	4.9	8.2	6.6	8.4	2.1
Wholesale and Retail Trade	39.8	23.5	34.1	42.9	46.7	36.9	47.4	50.0	37.4
Hotels and Restaurants	10.3	10.6	13.3	12.1	5.2	6.2	3.6	2.1	10.5
Transport, Storage & Communication	1.6	0.8	0.3	1.1	4.3	4.6	7.3	2.1	1.2
Financial Intermediaries	2.8	1.5	2.8	2.4	2.4	3.1	3.6	3.2	3.0
Real Estate, Renting & Business Activities	8.7	5.3	7.9	10.4	13.7	11.8	10.9	6.3	6.9
Education	2.4	2.3	3.1	3.0	2.4	3.6	0.7	1.1	2.0
Health and Social Work	3.7	2.3	3.3	4.7	4.2	3.1	2.9	2.1	3.3
Other Community & Personal Services	9.4	28.0	16.2	7.4	2.6	1.5	1.5	0.5	11.3
International Organizations	0.1	-	-	-	0.1	-	-	-	0.1
Not Stated	6.3	3.0	1.0	1.5	1.3	1.0	0.7	2.6	11.7
Total	100	100	100	100	100	100	100	100	100

Table 22: The Proportion of Enumerated Establishments by Location and Turnover

Economic Activity	Establishments (Percent of Total)	Annual Turnover (Pula)							
		< 10,000	10,000	50,001	1,000,001	5,000,001	10,00,001	> 20,000,000	Not Stated
			to 50,000	to 1,000,000	to 5,000,000	to 10,000,000	to 20,000,000		
Agriculture	100	4.8	17.7	22.6	4.8	4.8	-	-	45.2
Fishing	-	-	-	-	-	-	-	-	-
Mining and Quarrying	100	-	-	-	16.7	16.7	16.7	-	50.0
Manufacturing	100	2.7	10.1	28.8	9.3	3.4	1.9	4.1	39.7
Electricity, Gas and Water	100	-	-	14.0	12.0	6.0	2.0	4.0	62.0
Construction	100	0.9	1.7	25.3	16.7	6.9	3.9	6.9	37.8
Wholesale and Retail Trade	100	0.9	6.1	30.4	10.8	2.1	1.9	2.8	45.0
Hotels and Restaurants	100	1.6	9.1	33.3	4.6	1.4	0.6	0.5	49.0
Transport, Storage & Communication	100	0.7	1.5	19.7	24.8	6.6	7.3	2.9	36.5
Financial Intermediaries	100	0.8	7.1	24.4	8.0	2.5	2.1	2.5	52.5
Real Estate, Renting & Business Activities	100	0.9	6.4	33.7	14.5	3.1	2.0	1.6	37.7
Education	100	1.5	9.3	35.3	9.3	3.4	0.5	1.0	39.7
Health and Social Work	100	0.9	6.2	35.7	10.2	1.9	1.2	1.2	42.5
Other Community & Personal Services	100	4.6	12.3	22.2	2.6	0.4	0.2	0.1	57.6
International Organizations	100	-	-	16.7	16.7	-	-	-	66.7
Not Stated	100	0.7	1.1	6.6	1.8	0.4	0.2	0.9	88.3
Total	100	1.5	7.1	28.2	9.2	2.3	1.6	2.2	47.9

Table 23: The Number of Enumerated Establishments by Legal Status and Employment Size

Legal Status	Establishments (Number)	Number of Employees						
		1-4	5 - 29	30 - 49	50 - 99	100+	WP	Not Stated
Sole Proprietor	2,439	5	539	10	2	4	1,331	548
Partnership	552	-	243	15	11	4	177	102
Registered Private Limited Company	3,914	-	1,821	160	118	99	1,204	512
Public Limited Company	104	-	46	10	10	7	16	15
Parastatal	25	-	8	1	4	5	2	5
Cooperative	46	-	26	3	1	-	14	2
Non-Governmental Organization	177	1	56	8	6	3	47	56
Other	171	-	40	2	3	-	35	91
Not Stated	1,185	-	61	1	1	1	44	1,077
Total	8,613	6	2,840	210	156	123	2,870	2,408

WP = Working Proprietors i.e. owners and/or family members working in the business

Table 24: The Proportion of Enumerated Establishments by Legal Status and Employment Size

Legal Status	Establishments (Percent of Total)	Number of Employees					WP	Not Stated
		1-4	5 - 29	30 - 49	50 - 99	100+		
Sole Proprietor	28.3	83.3	19.0	4.8	1.3	3.3	46.4	22.8
Partnership	6.4	-	8.6	7.1	7.1	3.3	6.2	4.2
Registered Private Limited Company	45.4	-	64.1	76.2	75.6	80.5	42.0	21.3
Public Limited Company	1.2	-	1.6	4.8	6.4	5.7	0.6	0.6
Parastatal	0.3	-	0.3	0.5	2.6	4.1	0.1	0.2
Cooperative	0.5	-	0.9	1.4	0.6	-	0.5	0.1
Non-Governmental Organization	2.1	16.7	2.0	3.8	3.8	2.4	1.6	2.3
Other	2.0	-	1.4	1.0	1.9	-	1.2	3.8
Not Stated	13.8	-	2.1	0.5	0.6	0.8	1.5	44.7
Total	100	100	100	100	100	100	100	100

WP = Working Proprietors i.e. owners and/or family members working in the business

Table 25: The Proportion of Enumerated Establishments by Legal Status and Employment Size

Legal Status	Establishments (Percent of Total)	Number of Employees					WP	Not Stated
		1-4	5 - 29	30 - 49	50 - 99	100+		
Sole Proprietor	100	0.2	22.1	0.4	0.1	0.2	54.6	22.5
Partnership	100	-	44.0	2.7	2.0	0.7	32.1	18.5
Registered Private Limited Company	100	-	46.5	4.1	3.0	2.5	30.8	13.1
Public Limited Company	100	-	44.2	9.6	9.6	6.7	15.4	14.4
Parastatal	100	-	32.0	4.0	16.0	20.0	8.0	20.0
Cooperative	100	-	56.5	6.5	2.2	-	30.4	4.3
Non-Governmental Organization	100	0.6	31.6	4.5	3.4	1.7	26.6	31.6
Other	100	-	23.4	1.2	1.8	-	20.5	53.2
Not Stated	100	-	5.1	0.1	0.1	0.1	3.7	90.9
Total	100	0.1	33.0	2.4	1.8	1.4	33.3	28.0

WP = Working Proprietors i.e. owners and/or family members working in the business

Table 26: The Number of Enumerated Establishments by Location and Shareholding Status

Location	Establishments (Number)	Percent Shareholding							
		0 - 5		6 - 10		11 - 20		21 - 30	
		Citizens	Non-Citizens	Citizens	Non-Citizens	Citizens	Non-Citizens	Citizens	Non-Citizens
Gaborone	2,729	43	14	19	2	25	7	25	7
Francistown	770	3	3	1	1	1	1	1	1
Lobatse	235	-	-	1	-	2	2	1	-
Selibe Phikwe	423	6	-	1	-	2	1	2	-
Orapa/Letlhakane	29	-	-	-	-	-	-	-	-
Jwaneng	89	-	-	1	1	-	-	-	-
Southern	319	1	-	-	-	-	-	2	-
South-East	363	4	-	2	-	2	-	-	1
Kweneng	924	1	1	3	-	5	2	4	2
Kgatleng	246	1	1	1	-	-	1	1	-
Central	1,600	1	1	-	3	2	1	5	-
North-East	68	-	-	-	-	-	-	-	-
North-West	565	2	3	2	-	5	2	5	2
Ghanzi	91	1	-	1	-	1	-	1	-
Kgalagadi	162	2	-	-	-	1	1	1	-
Total	8,613	65	23	32	7	46	18	48	13

Table 26 cont: The Number of Enumerated Establishments by Location and Shareholding Status

Location	Establishments (Number)	Percent Shareholding							
		31 - 40		41 - 50		51+		Not Stated	
		Citizens	Non-Citizens	Citizens	Non-Citizens	Citizens	Non-Citizens	Citizens	Non-Citizens
Gaborone	2,729	27	11	76	34	880	227	1,634	2,427
Francistown	770	6	1	14	4	111	12	633	747
Lobatse	235	2	-	6	-	60	10	163	223
Selibe Phikwe	423	1	1	9	8	125	26	277	387
Orapa/Letlhakane	29	-	-	2	1	14	1	13	27
Jwaneng	89	1	1	1	-	35	8	51	79
Southern	319	1	-	5	3	67	12	243	304
South-East	363	2	-	9	5	110	15	234	342
Kweneng	924	6	5	28	9	279	49	598	856
Kgatleng	246	-	-	2	3	49	6	192	235
Central	1,600	8	1	14	7	346	51	1,224	1,536
North-East	68	1	-	2	-	14	5	51	63
North-West	565	9	-	5	5	176	37	361	516
Ghanzi	91	-	1	2	-	27	6	58	84
Kgalagadi	162	1	-	-	-	36	-	121	161
Total	8,613	65	21	175	79	2,329	465	5,853	7,987

Table 27: The Proportion of Enumerated Establishments by Location and Shareholding Status

Location	Establishments (Percent of Total)	Percent Shareholding							
		0 - 5		6 - 10		11 - 20		21 - 30	
		Citizens	Non-Citizens	Citizens	Non-Citizens	Citizens	Non-Citizens	Citizens	Non-Citizens
Gaborone	32	66.2	60.9	59.4	28.6	54.3	38.9	52.1	53.8
Francistown	9	4.6	13.0	3.1	14.3	2.2	5.6	2.1	7.7
Lobatse	3	-	-	3.1	-	4.3	11.1	2.1	-
Selibe Phikwe	5	9.2	-	3.1	-	4.3	5.6	4.2	-
Orapa/Letlhakane	0	-	-	-	-	-	-	-	-
Jwaneng	1	-	-	3.1	14.3	-	-	-	-
Southern	4	1.5	-	-	-	-	-	4.2	-
South-East	4	6.2	-	6.3	-	4.3	-	-	7.7
Kweneng	11	1.5	4.3	9.4	-	10.9	11.1	8.3	15.4
Kgatleng	3	1.5	4.3	3.1	-	-	5.6	2.1	-
Central	19	1.5	4.3	-	42.9	4.3	5.6	10.4	-
North-East	1	-	-	-	-	-	-	-	-
North-West	7	3.1	13.0	6.3	-	10.9	11.1	10.4	15.4
Ghanzi	1	1.5	-	3.1	-	2.2	-	2.1	-
Kgalagadi	2	3.1	-	-	-	2.2	5.6	2.1	-
Total	100	100	100	100	100	100	100	100	100

Table 27 cont: The Number of Enumerated Establishments by Location and Shareholding Status

Location	Establishments (Percent of Total)	Percent Shareholding							
		31 - 40		41 - 50		51+		Not Stated	
		Citizens	Non-Citizens	Citizens	Non-Citizens	Citizens	Non-Citizens	Citizens	Non-Citizens
Gaborone	31.7	41.5	52.4	43.4	43.0	37.8	48.8	27.9	30.4
Francistown	8.9	9.2	4.8	8.0	5.1	4.8	2.6	10.8	9.4
Lobatse	2.7	3.1	-	3.4	-	2.6	2.2	2.8	2.8
Selibe Phikwe	4.9	1.5	4.8	5.1	10.1	5.4	5.6	4.7	4.8
Orapa/Letlhakane	0.3	-	-	1.1	1.3	0.6	0.2	0.2	0.3
Jwaneng	1.0	1.5	4.8	0.6	-	1.5	1.7	0.9	1.0
Southern	3.7	1.5	-	2.9	3.8	2.9	2.6	4.2	3.8
South-East	4.2	3.1	-	5.1	6.3	4.7	3.2	4.0	4.3
Kweneng	10.7	9.2	23.8	16.0	11.4	12.0	10.5	10.2	10.7
Kgatleng	2.9	-	-	1.1	3.8	2.1	1.3	3.3	2.9
Central	18.6	12.3	4.8	8.0	8.9	14.9	11.0	20.9	19.2
North-East	0.8	1.5	-	1.1	-	0.6	1.1	0.9	0.8
North-West	6.6	13.8	-	2.9	6.3	7.6	8.0	6.2	6.5
Ghanzi	1.1	-	4.8	1.1	-	1.2	1.3	1.0	1.1
Kgalagadi	1.9	1.5	-	-	-	1.5	-	2.1	2.0
Total	100	100	100	100	100	100	100	100	100