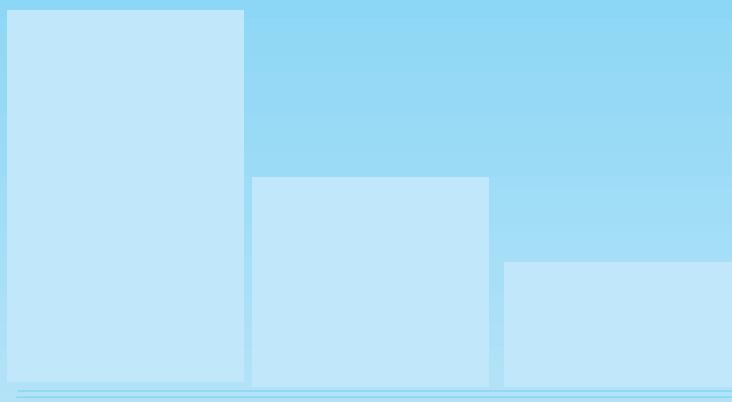


# STATISTICS BOTSWANA

## GROSS DOMESTIC PRODUCT

Second Quarter 2017

Copyrights © Statistics Botswana 2016



Published by

STATISTICS BOTSWANA  
Private Bag 0024, Gaborone  
Tel: 3671300 Fax: 3952201  
E-mail: [info@statsbots.org.bw](mailto:info@statsbots.org.bw)  
Website: [www.statsbots.org.bw](http://www.statsbots.org.bw)

**September 2017**

Copyright © Statistics Botswana 2017



# GROSS DOMESTIC PRODUCT

## Quarter 2, 2017

## TABLE OF CONTENTS

Table of contents.....	1
1. Introduction.....	2
2. Gross Domestic Product.....	3
2.1 Revisions in this release.....	3
3. Second quarter GDP.....	4
3.2 Components of GDP by Type of Expenditure.....	5
<b>Figure 1: Real GDP growth rates.....</b>	<b>5</b>
<b>Figure 2: Components of Gross Domestic Expenditure at 2006 prices .....</b>	<b>6</b>

## 1. Introduction

The statistical release contains the second quarter Gross Domestic Product estimates of 2017 by economic activity and components of final demand at current and constant prices.

Botswana's National Accounts are compiled according to the 1993 System of National Accounts (1993 SNA). The accounts presented in this publication adhere to the enhanced General Data Dissemination System (e-GDDS) of the International Monetary Fund (IMF), which sets out standards on coverage, periodicity and timeliness of data.

**The estimates are provisional and subject to change. First estimates are normally based on limited data and hence cannot be precise and absolute. The figures are revised after receiving finalized or audited data from companies in which some differences and inconsistencies in the previously published data may be observed.**

These estimates are not seasonally adjusted hence the variations may differ depending on the quarters.

Statistics Botswana acknowledges and appreciates the contribution of all stakeholders in the production of this report.

For more information and further enquiries, contact the Directorate of Stakeholder Relations at 3671300 or [info@statsbots.org.bw](mailto:info@statsbots.org.bw). All Statistics Botswana outputs/publications are available on the website at [www.statsbots.org.bw](http://www.statsbots.org.bw) and at the Statistics Botswana Information Resource Center (Head-Office, Gaborone).



**Anna Majelantle**  
**Statistician General**  
**September 2017**

## 2. Gross Domestic Product (GDP)

### 2.1 Revisions in this release

Revisions have been made to the quarterly Gross Domestic Product (GDP) estimates published in June 2017, specifically 2017 first quarter GDP estimates. The changes were due to the updated source data and have affected Finance & Business services and exports & imports of goods & services.

### 2.2 Key figures

	Real Gross Domestic Product		Total Final Consumption		Gross Fixed Capital Formation	
	Percentage Change					
	Quarter-on-Quarter	Year-on-Year	Quarter-on-Quarter	Year-on-Year	Quarter-on-Quarter	Year-on-Year
First quarter 2013	3.5	9.8	1.5	32.4	-7.5	-1.8
Second quarter 2013	2.1	12.6	-5.4	13.2	11.3	9.6
Third quarter 2013	-0.1	13.4	-2.9	2.9	-4	-1.4
Fourth quarter 2013	3.9	9.7	8.4	1.1	3.1	1.9
First quarter 2014	-2.5	3.3	2.9	2.4	-0.7	9.3
Second quarter 2014	3.3	4.6	-4.5	3.4	-1.8	-3.5
Third quarter 2014	1.3	6	-0.4	6.1	-6.2	-5.7
Fourth quarter 2014	0.6	2.7	5.1	2.8	16.3	6.3
First quarter 2015	-2.4	2.7	2.3	2.2	-6.1	0.5
Second quarter 2015	0.2	-0.3	-3.1	3.6	7.8	10.4
Third quarter 2015	-3.9	-5.4	1.8	6	4	22.4
Fourth quarter 2015	2.6	-3.5	1.4	2.3	-2	3.2
First quarter 2016	3.5	2.3	2.2	2.2	-5.8	3.5
Second quarter 2016	1.7	3.9	-4.9	0.4	11	6.6
Third quarter 2016	-1.1	6.9	2.7	1.3	-1.4	1.1
Fourth quarter 2016	0.1	4.2	3	2.8	0.3	3.5
First quarter 2017	0.2	0.8	-0.3	0.4	-14.8	-6.4
Second quarter 2017	1.9	1	0.8	6.3	0.3	-15.4

### 2.3 Second quarter GDP

#### 2.3.1 Production Account

The estimated GDP at current prices for the second quarter of 2017 was P43, 005.2 million compared to P43, 645.6 million registered in the first quarter of 2017 (See table 1).

The estimated GDP at constant 2006 prices for the second quarter of 2017 was P22, 886.1 million compared to P22, 465.4 million registered in the first quarter of 2017 (See table 3).

The domestic economy increased by 1.0 percent in the second quarter of 2017 compared to an increase of 3.9 percent recorded in the same quarter of 2016. The increase was attributed to real value added of Water & Electricity, Transport & Communications and Finance & Business Services which increased by 6.0, 5.9 and 5.6 percent respectively. All other industries recorded positive growths of more than 1.2 percent with the exception of Mining and Manufacturing which decreased by 13.8 and 0.2 percent respectively (See table 4).

Transport and Communications growth of 5.9 percent was attributed to the increase in real value added of Air transport, Road transport and Post & Communications by 9.3, 7.9 and 6.1 percent respectively.

The increase of 5.6 percent in the real value added of the Finance and Business Services industry was mainly due to the rise in the value added of Business Services and Real Estate by 8.3 and 6.4 percent respectively.

The decrease in the real mining value added of 13.8 percent was because of the closure of copper/nickel mines during the fourth quarter of 2016. In the quarter under review, copper/nickel production was zero due to the provisional liquidation of the BCL mine in October 2016. The year on year growth compares the second quarter of 2016 value added which has copper contribution and the current period without copper value added. The copper/nickel statement will stay valid until publishing the third quarter of 2017. On the other hand, diamond value added increased by 12.9 percent during the quarter under review. Diamonds production in carats increased by 12.9 percent in the second quarter of 2017 compared to a decrease of 12.1 percent recorded in the same quarter of 2016. Soda Ash value added decreased by 25.4 percent because the mine was placed under care and maintenance in May 2017 in order to remain in a state of readiness.

Water and Electricity value added at constant 2006 prices for the second quarter of 2017 was P205.9 million compared to P194.2 million registered in the same quarter of 2016, recording an increase of 6.0 percent. In the second quarter of 2017, Electricity recorded a positive value added of P24.0 million compared to a negative value added of P46.7 million registered in the first quarter of 2017. The improvement in the Electricity real value added is attributed to an increase in local electricity production by 38.9 percent and a decrease of 52.3 percent in electricity imports. Morupule B Power Station was operating at full capacity using the four units during the quarter under review.

In the second quarter of 2017, the real value added of water sector increased by 4.6 percent compared to an increase of 29.5 percent recorded in the same quarter of the previous year. Water consumption in kilolitres rose by 4.1 percent during the quarter under review.

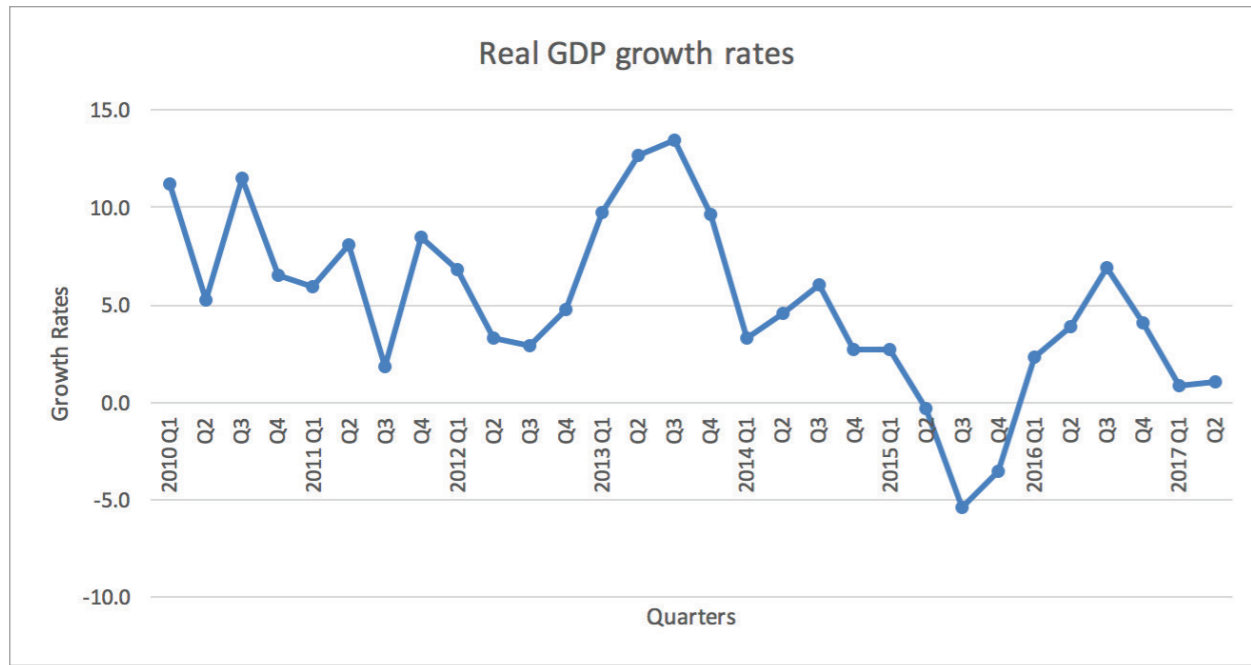
Trade, Hotels and Restaurants real value added increased by 2.4 percent in the second quarter of 2017 as compared to 20.1 percent registered in the same quarter of the previous year. The slow growth is attributed to the decrease in real value added of wholesale sub sector by 11.0 percent. Wholesaler's value added decreased because downstream diamond industries contributed less to the industry during the quarter under review. Diamond exports in value terms went down by 39.7 percent.

The decrease of 0.2 percent in the real value added of the Manufacturing industry was mainly due to the decrease in the real value added of all sub industries except other manufacturing which increased by 0.4 percent.

Non mining GDP increased by 3.1 percent in the second quarter of 2017 compared to 7.0 percent registered in the same quarter of the previous year.

Trade, Hotels and Restaurants remained the major contributor to GDP by 20.2 percent followed by General Government at 14.9 percent while Mining came third by 14.7 percent. Trade, Hotels and Restaurants contribution increased because of inclusion of diamond aggregation processes under wholesale sub sector.

Figure 1: Real GDP growth rates



### 2.3.2 Components of GDP by Type of Expenditure

Total final consumption expenditure recorded an increase of 6.3 percent in the second quarter of 2017, whereas in the same quarter of the previous year it rose by 0.4 percent. Household final consumption increased by 7.6 percent, Government final consumption increased by 3.7 percent and Fixed capital formation decreased by 15.4 percent in the quarter under review. Imports of machinery & equipment and transport & equipment also decreased by 30.9 percent and 26.6 percent respectively.

In the case of foreign trade, real exports of goods and services decreased by 33.6 percent in the second quarter of 2017 compared to an increase of 12.9 percent realized in the same quarter of 2016. Diamond is the major export commodity. Exports of diamonds in Pula decreased by 39.7 percent in the second quarter of 2017 compared to an increase of 36.8 percent registered in the same quarter of 2016.

Imports of goods and services recorded a decrease of 25.3 percent during the quarter under review, compared to 7.4 percent decline realized in the same quarter of the previous year.

Figure 2: Components of Gross Domestic Expenditure at 2006 prices

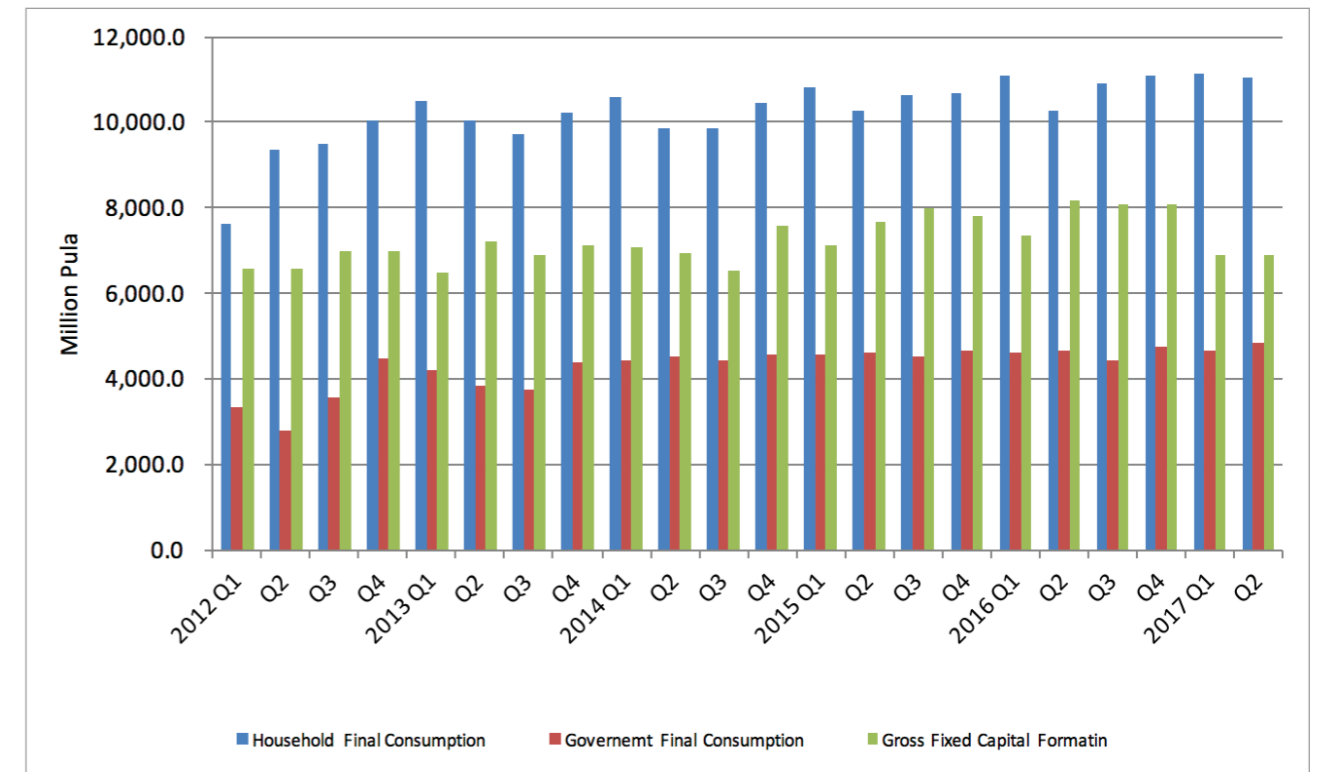


Table A 2: GDP per capita (Pula)

Year	Nominal GDP per capita	Real GDP per capita
1994	7,869.20	22,793.40
1995	8,800.80	23,789.80
1996	10,550.80	24,562.50
1997	11,707.10	25,958.70
1998	12,615.70	25,437.90
1999	15,627.30	27,583.60
2000	17,991.20	27,814.80
2001	19,077.20	27,229.80
2002	20,097.50	28,349.60
2003	21,311.80	29,113.90
2004	23,650.10	29,350.00
2005	28,026.80	30,121.20
2006	32,038.30	32,038.30
2007	35,727.90	34,050.10
2008	39,021.10	35,509.20
2009	37,656.10	32,186.90
2010	43,705.90	34,298.60
2011	51,844.30	35,702.10
2012	53,116.00	36,507.00
2013	59,313.90	39,846.80
2014	67,867.9	40,743.3
2015	66,756.7	39,380.0
2016	76,446.4	40,444.7



**TABLES**  
GROSS DOMESTIC PRODUCT  
Second Quarter 2017

Table 1: Value Added by Kind of Economic Activity at Current Prices (P million)

Calendar year	Agriculture	Mining	Manufacturing	Water & Electricity	Construction	Trade, Hotels & Restaurants	Transport & Communication	Finance & Business Service	General Government	Social & Personal Services	Value Added	Taxes on Import	Other Taxes on Products	Subsidies	Total GDP
2004	949.9	10,801.5	2,334.8	806.8	2,376.3	5,116.3	1,449.5	5,330.5	6,151.8	2,110.2	37,427.5	2,746.9	2,086.7	-224.6	<b>42,036.6</b>
2005	927.9	16,105.1	2,512.0	714.9	2,417.8	5,498.9	1,825.1	5,918.6	7,195.5	2,544.4	45,660.2	3,174.9	2,172.2	-255.1	<b>50,752.2</b>
2006	1,210.7	19,019.0	3,123.1	785.1	2,838.0	7,032.3	2,250.5	6,675.4	7,818.5	2,938.9	53,691.6	3,428.8	2,276.3	-289.8	<b>59,106.9</b>
2007	1,504.7	19,567.7	4,206.6	751.5	3,544.1	8,243.6	2,697.3	7,653.0	8,887.4	3,255.8	60,311.7	4,290.5	2,879.7	-329.2	<b>67,152.7</b>
2008	1,887.5	18,643.5	4,278.9	654.1	3,726.9	10,047.1	3,303.9	9,316.7	10,899.5	3,847.4	66,605.5	4,701.4	3,788.1	-374.0	<b>74,720.9</b>
2009	2,071.0	11,209.6	4,662.3	317.2	4,495.0	11,162.8	3,993.0	9,694.7	12,316.3	4,593.3	64,515.2	4,535.3	4,836.6	-424.9	<b>73,462.3</b>
2010	2,161.3	16,660.8	5,548.3	411.9	5,056.1	13,084.3	4,470.8	11,609.7	13,377.3	5,242.7	77,623.1	4,425.0	5,252.1	-432.7	<b>86,867.5</b>
2011	2,636.0	24,529.1	6,074.2	-58.8	6,247.3	15,595.3	5,113.9	13,978.7	14,777.6	5,881.2	94,774.4	5,055.4	5,598.3	-448.3	<b>104,979.8</b>
2012	2,961.3	19,286.5	6,523.2	-621.2	7,464.5	16,896.7	6,325.3	16,467.8	16,923.7	6,750.2	98,978.1	5,560.5	5,804.8	-472.9	<b>109,870.4</b>
2013	2,876.9	24,243.4	7,285.1	-123.2	7,997.9	21,211.3	6,906.2	17,717.0	17,731.0	7,344.1	113,189.7	6,403.1	6,083.2	-517.7	<b>125,158.3</b>
2014	3,045.3	32,403.0	7,740.3	-581.5	8,689.7	26,182.3	7,788.2	19,284.3	19,946.0	8,138.4	132,636.1	7,107.4	6,691.5	-566.6	<b>145,868.4</b>
2015	3,214.5	25,819.9	8,441.7	-219.2	9,606.6	23,711.4	8,559.3	21,517.5	22,491.1	8,653.0	131,795.8	7,541.6	7,205.1	-619.0	<b>145,923.5</b>
2016	3,393.4	33,825.9	8,777.0	464.0	10,574.9	31,021.2	9,643.4	23,154.7	24,423.2	9,259.3	154,536.1	8,054.3	7,782.0	-685.2	<b>169,687.9</b>
2004 Q1	185.5	2,721.9	569.5	183.1	604.5	1,261.8	346.5	1,261.5	1,429.6	509.3	9,073.3	549.5	681.8	-51.3	<b>10,253.3</b>
Q2	317.6	1,348.6	582.2	194.3	586.3	1,294.1	337.0	1,253.5	1,522.9	513.2	7,949.9	768.1	412.6	-57.4	<b>9,073.2</b>
Q3	265.1	3,647.8	571.9	208.5	607.9	1,279.8	375.6	1,389.7	1,602.8	537.0	10,486.1	719.3	326.1	-54.7	<b>11,476.8</b>
Q4	181.6	3,083.2	611.2	220.9	577.5	1,280.5	390.5	1,425.8	1,596.4	550.7	9,918.3	710.0	666.3	-61.1	<b>11,233.4</b>
2005 Q1	222.2	4,040.3	606.6	160.4	576.5	1,237.7	404.7	1,405.4	1,615.8	588.7	10,858.3	798.4	744.7	-58.3	<b>12,343.1</b>
Q2	254.2	2,939.0	620.9	174.0	595.1	1,323.6	416.5	1,427.3	1,693.5	610.0	10,054.2	718.5	419.1	-65.2	<b>11,126.7</b>
Q3	288.6	5,341.3	634.7	183.7	615.1	1,405.6	492.5	1,518.6	1,852.6	661.1	12,993.9	646.9	609.0	-62.2	<b>14,187.7</b>
Q4	162.9	3,784.5	649.8	196.7	631.0	1,532.0	511.4	1,567.3	2,033.6	684.7	11,753.8	1,011.1	399.3	-69.5	<b>13,094.7</b>
2006 Q1	350.2	4,483.6	715.1	170.4	664.5	1,676.4	524.4	1,648.8	1,723.6	718.3	12,675.4	766.1	626.8	-66.3	<b>14,002.0</b>
Q2	258.4	3,463.4	722.3	177.9	685.7	1,700.0	550.0	1,649.0	2,001.7	725.2	11,933.6	848.6	501.7	-74.0	<b>13,209.9</b>
Q3	355.1	5,746.3	812.6	205.4	803.9	1,789.6	569.2	1,734.1	2,028.3	756.8	14,801.2	951.5	533.6	-70.6	<b>16,215.7</b>
Q4	247.0	5,325.6	873.1	231.4	683.9	1,866.3	606.9	1,643.5	2,064.9	738.7	14,281.4	862.6	614.2	-78.9	<b>15,679.3</b>
2007 Q1	319.9	4,938.4	938.7	195.3	774.8	1,927.0	603.9	1,897.3	2,021.5	761.2	14,378.0	814.2	617.0	-75.3	<b>15,733.9</b>
Q2	478.6	3,760.5	1,092.6	193.6	859.3	2,037.4	669.8	1,907.7	2,251.5	789.7	14,040.8	1,145.0	672.7	-84.1	<b>15,774.4</b>
Q3	456.6	6,165.2	1,100.1	183.8	898.7	2,035.8	698.4	1,974.1	2,299.5	854.7	16,666.9	1,160.1	767.4	-80.2	<b>18,514.2</b>
Q4	249.6	4,703.6	1,075.2	178.8	1,011.3	2,243.4	725.1	1,873.9	2,314.7	850.2	15,225.9	1,171.3	822.6	-89.6	<b>17,130.1</b>
2008 Q1	416.0	4,966.0	940.5	150.8	853.8	2,269.1	779.2	2,032.1	2,326.4	900.4	15,634.3	1,130.1	805.7	-85.5	<b>17,484.6</b>
Q2	452.7	3,584.5	1,123.3	159.0	918.1	2,452.9	806.5	2,171.4	2,782.2	906.0	15,356.7	1,171.4	854.4	-95.5	<b>17,286.9</b>
Q3	558.8	5,395.9	1,132.1	161.1	948.1	2,583.8	844.7	2,514.3	2,864.1	1,003.0	18,006.0	1,194.7	1,039.3	-91.1	<b>20,148.9</b>
Q4	460.0	4,697.1	1,083.0	183.2	1,006.8	2,741.2	873.5	2,598.9	2,926.9	1,037.9	17,608.6	1,205.1	1,088.6	-101.8	<b>19,800.4</b>
2009 Q1	428.6	1,950.5	1,100.1	83.1	1,060.6	2,725.5	909.6	2,374.6	2,881.6	1,123.8	14,637.9	1,007.4	1,047.9	-97.1	<b>16,596.0</b>
Q2	535.8	3,272.8	1,202.2	79.2	1,137.9	2,882.6	950.4	2,365.8	3,093.0	1,122.8	16,642.5	1,089.0	1,108.7	-108.5	<b>18,731.5</b>
Q3	603.5	2,519.6	1,147.9	65.2	1,199.7	2,841.3	1,031.5	2,377.3	3,156.2	1,191.7	16,134.0	1,155.4	1,286.0	-103.5	<b>18,471.9</b>
Q4	503.1	3,466.7	1,212.1	89.6	1,096.9	2,713.4	1,101.5	2,577.1	3,185.5	1,154.9	17,101.0	1,283.6	1,394.1	-115.7	<b>19,663.0</b>
2010 Q1	490.8	3,242.2	1,277.1	128.2	1,153.3	2,943.0	1,040.7	2,703.1	3,136.9	1,261.5	17,376.6	1,082.3	1,257.7	-98.9	<b>19,617.7</b>
Q2	595.0	3,759.1	1,357.3	101.1	1,150.6	3,267.1	1,080.3	2,881.7	3,179.0	1,302.7	18,673.9	1,049.8	1,301.7	-110.5	<b>20,914.9</b>
Q3	580.3	5,085.7	1,412.3	85.5	1,351.0	3,496.6	1,165.3	2,911.5	3,338.1	1,355.8	20,782.1	1,102.3	1,327.7	-105.4	<b>23,106.7</b>
Q4	495.2	4,573.8	1,501.6	97.1	1,401.3	3,377.5	1,184.5	3,113.3	3,723.4	1,322.8	20,790.5	1,190.5	1,364.9	-117.8	<b>23,228.1</b>
2011 Q1	499.9	5,824.8	1,362.8	-0.1	1,424.7	3,821.3	1,201.2	3,162.6	3,021.0	1,328.4	21,646.7	897.4	1,433.1	-114.3	<b>23,862.8</b>
Q2	667.8	6,113.8	1,426.5	-11.2	1,472.6	3,716.6	1,235.1	3,352.9	3,725.1	1,441.8	23,141.1	1,412.1	1,473.4	-102.2	<b>25,924.5</b>
Q3	716.1	6,598.8	1,585.0	-39.6	1,638.1	3,839.1	1,324.9	3,624.8	3,677.8	1,492.5	24,457.6	1,412.0	1,201.6	-113.9	<b>26,957.3</b>
Q4	752.2	5,991.6	1,699.8	-7.9	1,711.8	4,218.3	1,352.7	3,838.5	4,353.7	1,618.4	25,529.1	1,333.9	1,490.2	-117.9	<b>28,235.3</b>
2012 Q1	728.0	4,617.1	1,601.4	-23.3	1,830.9	4,211.2	1,509.2	3,790.4	3,681.4	1,609.6	23,555.9	1,235.0	1,368.9	-115.8	<b>26,044.1</b>
Q2	796.0	5,524.0	1,627.7	-265.7	1,859.2	4,173.6	1,564.6	4,072.5	4,145.2	1,687.8	25,184.9	1,267.2	1,390.5	-116.6	<b>27,726.0</b>
Q3	808.9	4,443.1	1,668.5	-167.5	1,878.9	4,258.9	1,617.1	4,235.0	4,268.4	1,709.6	24,721.0	1,431.0	1,509.0	-119.2	<b>27,541.9</b>
Q4	628.4	4,702.3	1,625.6	-164.7	1,895.5	4,253.0	1,634.4	4,369.9	4,828.7	1,743.1	25,516.2	1,627.2	1,536.4	-121.4	<b>28,558.5</b>

Table 1: Value Added by Kind of Economic Activity at Current Prices (P million)

Calendar year	Agriculture	Mining	Manufacturing	Water & Electricity	Construction	Trade, Hotels & Restaurants	Transport & Communication	Finance & Business Service	General Government	Social & Personal Services	Value Added	Taxes on Import	Other Taxes on Products	Subsidies	Total GDP
2013 Q1	649.3	4,672.1	1,725.8	-4.5	1,954.4	4,822.2	1,661.8	4,297.0	3,980.5	1,742.6	25,501.2	1,580.3	1,468.5	-124.4	<b>28,425.6</b>
Q2	780.6	7,935.6	1,784.4	-126.1	1,988.8	5,006.8	1,677.4	4,377.8	4,345.8	1,833.7	29,604.9	1,511.0	1,472.5	-125.6	<b>32,462.8</b>
Q3	704.0	6,123.9	1,865.3	63.5	2,000.0	5,451.6	1,749.6	4,424.3	4,422.6	1,864.2	28,668.9	1,571.7	1,557.5	-132.3	<b>31,665.7</b>
Q4	743.0	5,511.7	1,909.6	-56.1	2,054.7	5,930.7	1,817.4	4,618.0	4,982.1	1,903.6	29,414.7	1,740.1	1,584.8	-135.4	<b>32,604.2</b>
2014 Q1	721.2	7,260.3	1,784.0	-295.1	2,139.5	6,377.6	1,924.6	4,635.6	4,723.5	1,982.8	31,253.9	1,759.4	1,636.5	-141.5	<b>34,508.4</b>
Q2	774.2	9,390.5	1,897.9	111.7	2,205.0	6,553.2	1,922.0	4,733.3	4,881.4	2,020.5	34,489.8	1,714.3	1,654.3	-140.0	<b>37,718.4</b>
Q3	762.1	7,289.9	1,986.3	-25.6	2,161.4	6,674.8	1,954.1	4,905.2	5,055.2	2,053.3	32,816.6	1,788.3	1,694.0	-143.4	<b>36,155.6</b>
Q4	787.8	8,462.4	2,072.1	-372.4	2,183.8	6,576.6	1,987.5	5,010.2	5,285.9	2,081.9	34,075.7	1,845.4	1,706.6	-141.8	<b>37,486.0</b>
2015 Q1	775.9	7,641.6	2,048.0	-299.2	2,331.0	6,136.0	2,022.4	5,070.1	5,347.6	2,118.8	33,192.2	1,836.3	1,690.8	-148.9	<b>36,570.3</b>
Q2	816.1	7,646.3	2,105.5	-9.1	2,420.9	5,750.6	2,089.3	5,331.0	5,537.8	2,139.5	33,828.0	1,887.1	1,768.0	-153.4	<b>37,329.7</b>
Q3	799.0	6,879.3	2,131.3	-18.1	2,402.9	5,777.5	2,199.1	5,476.2	5,785.7	2,175.4	33,608.4	1,932.7	1,857.1	-158.0	<b>37,240.2</b>
Q4	823.5	3,652.8	2,156.8	107.2	2,451.7	6,047.3	2,248.4	5,640.2	5,819.9	2,219.2	31,167.1	1,885.5	1,889.3	-158.7	<b>34,783.2</b>
2016 Q1	833.6	7,360.1	2,115.7	-70.9	2,526.0	6,929.9	2,252.2	5,562.2	6,023.0	2,254.4	35,786.3	2,015.3	1,862.4	-164.5	<b>39,499.5</b>
Q2	863.1	8,474.0	2,151.4	122.9	2,612.6	7,964.									



Table 2: Contribution of Gross Value Added to GDP by Kind of Economic Activity at Current Prices

Calendar year	Agriculture	Mining	Manufacturing	Water & Electricity	Construction	Trade, Hotels & Restaurants	Transport & Communication	Finance & Business Service	General Government	Social & Personal Services	Value Added	Taxes on Import	Other Taxes on products	Subsidies	Total GDP
2004	2.3	25.7	5.6	1.9	5.7	12.2	3.4	12.7	14.6	5.0	89.0	6.5	5.0	-0.5	100.0
2005	1.8	31.7	4.9	1.4	4.8	10.8	3.6	11.7	14.2	5.0	90.0	6.3	4.3	-0.5	100.0
2006	2.0	32.2	5.3	1.3	4.8	11.9	3.8	11.3	13.2	5.0	90.8	5.8	3.9	-0.5	100.0
2007	2.2	29.1	6.3	1.1	5.3	12.3	4.0	11.4	13.2	4.8	89.8	6.4	4.3	-0.5	100.0
2008	2.5	25.0	5.7	0.9	5.0	13.4	4.4	12.5	14.6	5.1	89.1	6.3	5.1	-0.5	100.0
2009	2.8	15.3	6.3	0.4	6.1	15.2	5.4	13.2	16.8	6.3	87.8	6.2	6.6	-0.6	100.0
2010	2.5	19.2	6.4	0.5	5.8	15.1	5.1	13.4	15.4	6.0	89.4	5.1	6.0	-0.5	100.0
2011	2.5	23.4	5.8	-0.1	6.0	14.9	4.9	13.3	14.1	5.6	90.3	4.8	5.3	-0.4	100.0
2012	2.7	17.6	5.9	-0.6	6.8	15.4	5.8	15.0	15.4	6.1	90.1	5.1	5.3	-0.4	100.0
2013	2.3	19.4	5.8	-0.1	6.4	16.9	5.5	14.2	14.2	5.9	90.4	5.1	4.9	-0.4	100.0
2014	2.1	22.2	5.3	-0.4	6.0	17.9	5.3	13.2	13.7	5.6	90.9	4.9	4.6	-0.4	100.0
2015	2.2	17.7	5.8	-0.2	6.6	16.2	5.9	14.7	15.4	5.9	90.3	5.2	4.9	-0.4	100.0
2016	2.0	19.9	5.2	0.3	6.2	18.3	5.7	13.6	14.4	5.5	91.1	4.7	4.6	-0.4	100.0
2004 Q1	1.8	26.5	5.6	1.8	5.9	12.3	3.4	12.3	13.9	5.0	88.5	5.4	6.6	-0.5	100.0
Q2	3.5	14.9	6.4	2.1	6.5	14.3	3.7	13.8	16.8	5.7	87.6	8.5	4.5	-0.6	100.0
Q3	2.3	31.8	5.0	1.8	5.3	11.2	3.3	12.1	14.0	4.7	91.4	6.3	2.8	-0.5	100.0
Q4	1.6	27.4	5.4	2.0	5.1	11.4	3.5	12.7	14.2	4.9	88.3	6.3	5.9	-0.5	100.0
2005 Q1	1.8	32.7	4.9	1.3	4.7	10.0	3.3	11.4	13.1	4.8	88.0	6.5	6.0	-0.5	100.0
Q2	2.3	26.4	5.6	1.6	5.3	11.9	3.7	12.8	15.2	5.5	90.4	6.5	3.8	-0.6	100.0
Q3	2.0	37.6	4.5	1.3	4.3	9.9	3.5	10.7	13.1	4.7	91.6	4.6	4.3	-0.4	100.0
Q4	1.2	28.9	5.0	1.5	4.8	11.7	3.9	12.0	15.5	5.2	89.8	7.7	3.0	-0.5	100.0
2006 Q1	2.5	32.0	5.1	1.2	4.7	12.0	3.7	11.8	12.3	5.1	90.5	5.5	4.5	-0.5	100.0
Q2	2.0	26.2	5.5	1.3	5.2	12.9	4.2	12.5	15.2	5.5	90.3	6.4	3.8	-0.6	100.0
Q3	2.2	35.4	5.0	1.3	5.0	11.0	3.5	10.7	12.5	4.7	91.3	5.9	3.3	-0.4	100.0
Q4	1.6	34.0	5.6	1.5	4.4	11.9	3.9	10.5	13.2	4.7	91.1	5.5	3.9	-0.5	100.0
2007 Q1	2.0	31.4	6.0	1.2	4.9	12.2	3.8	12.1	12.8	4.8	91.4	5.2	3.9	-0.5	100.0
Q2	3.0	23.8	6.9	1.2	5.4	12.9	4.2	12.1	14.3	5.0	89.0	7.3	4.3	-0.5	100.0
Q3	2.5	33.3	5.9	1.0	4.9	11.0	3.8	10.7	12.4	4.6	90.0	6.3	4.1	-0.4	100.0
Q4	1.5	27.5	6.3	1.0	5.9	13.1	4.2	10.9	13.5	5.0	88.9	6.8	4.8	-0.5	100.0
2008 Q1	2.4	28.4	5.4	0.9	4.9	13.0	4.5	11.6	13.3	5.1	89.4	6.5	4.6	-0.5	100.0
Q2	2.6	20.7	6.5	0.9	5.3	14.2	4.7	12.6	16.1	5.2	88.8	6.8	4.9	-0.6	100.0
Q3	2.8	26.8	5.6	0.8	4.7	12.8	4.2	12.5	14.2	5.0	89.4	5.9	5.2	-0.5	100.0
Q4	2.3	23.7	5.5	0.9	5.1	13.8	4.4	13.1	14.8	5.2	88.9	6.1	5.5	-0.5	100.0
2009 Q1	2.6	11.8	6.6	0.5	6.4	16.4	5.5	14.3	17.4	6.8	88.2	6.1	6.3	-0.6	100.0
Q2	2.9	17.5	6.4	0.4	6.1	15.4	5.1	12.6	16.5	6.0	88.8	5.8	5.9	-0.6	100.0
Q3	3.3	13.6	6.2	0.4	6.5	15.4	5.6	12.9	17.1	6.5	87.3	6.3	7.0	-0.6	100.0
Q4	2.6	17.6	6.2	0.5	5.6	13.8	5.6	13.1	16.2	5.9	87.0	6.5	7.1	-0.6	100.0
2010 Q1	2.5	16.5	6.5	0.7	5.9	15.0	5.3	13.8	16.0	6.4	88.6	5.5	6.4	-0.5	100.0
Q2	2.8	18.0	6.5	0.5	5.5	15.6	5.2	13.8	15.2	6.2	89.3	5.0	6.2	-0.5	100.0
Q3	2.5	22.0	6.1	0.4	5.8	15.1	5.0	12.6	14.4	5.9	89.9	4.8	5.7	-0.5	100.0
Q4	2.1	19.7	6.5	0.4	6.0	14.5	5.1	13.4	16.0	5.7	89.5	5.1	5.9	-0.5	100.0
2011 Q1	2.1	24.4	5.7	-0.0	6.0	16.0	5.0	13.3	12.7	5.6	90.7	3.8	6.0	-0.5	100.0
Q2	2.6	23.6	5.5	-0.0	5.7	14.3	4.8	12.9	14.4	5.6	89.3	5.4	5.7	-0.4	100.0
Q3	2.7	24.5	5.9	-0.1	6.1	14.2	4.9	13.4	13.6	5.5	90.7	5.2	4.5	-0.4	100.0
Q4	2.7	21.2	6.0	-0.0	6.1	14.9	4.8	13.6	15.4	5.7	90.4	4.7	5.3	-0.4	100.0
2012 Q1	2.8	17.7	6.1	-0.1	7.0	16.2	5.8	14.6	14.1	6.2	90.4	4.7	5.3	-0.4	100.0
Q2	2.9	19.9	5.9	-1.0	6.7	15.1	5.6	14.7	15.0	6.1	90.8	4.6	5.0	-0.4	100.0
Q3	2.9	16.1	6.1	-0.6	6.8	15.5	5.9	15.4	15.5	6.2	89.8	5.2	5.5	-0.4	100.0
Q4	2.2	16.5	5.7	-0.6	6.6	14.9	5.7	15.3	16.9	6.1	89.3	5.7	5.4	-0.4	100.0

Table 2: Contribution of Gross Value Added to GDP by Kind of Economic Activity at Current Prices

Calendar year	Agriculture	Mining	Manufacturing	Water & Electricity	Construction	Trade, Hotels & Restaurants	Transport & Communication	Finance & Business Service	General Government	Social & Personal Services	Value Added	Taxes on Import	Other Taxes on products	Subsidies	Total GDP
2013 Q1	2.3	16.4	6.1	-0.0	6.9	17.0	5.8	15.1	14.0	6.1	89.7	5.6	5.2	-0.4	100.0
Q2	2.4	24.4	5.5	-0.4	6.1	15.4	5.2	13.5	13.4	5.6	91.2	4.7	4.5	-0.4	100.0
Q3	2.2	19.3	5.9	0.2	6.3	17.2	5.5	14.0	14.0	5.9	90.5	5.0	4.9	-0.4	100.0
Q4	2.3	16.9	5.9	-0.2	6.3	18.2	5.6	14.2	15.3	5.8	90.2	5.3	4.9	-0.4	100.0
2014 Q1	2.1	21.0	5.2	-0.9	6.2	18.5	5.6	13.4	13.7	5.7	90.6	5.1	4.7	-0.4	100.0
Q2	2.1	24.9	5.0	0.3	5.8	17.4	5.1	12.5	12.9	5.4	91.4	4.5	4.4	-0.4	100.0
Q3	2.1	20.2	5.5	-0.1	6.0	18.5	5.4	13.6	14.0	5.7	90.8	4.9	4.7	-0.4	100.0
Q4	2.1	22.6	5.5	-1.0	5.8	17.5	5.3	13.4	14.1	5.6	90.9	4.9	4.6	-0.4	100.0
2015 Q1	2.1	20.9	5.6	-0.8	6.4	16.8	5.5	13.9	14.6	5.8	90.8	5.0	4.6	-0.4	100.0
Q2	2.2	20.5	5.6	-0.0	6.5	15.4	5.6	14.3	14.8	5.7	90.6	5.1	4.7	-0.4	100.0
Q3	2.1	18.5	5.7	-0.0	6.5	15.5	5.9	14.7	15.5	5.8	90.2	5.2	5.0	-0.4	100.0
Q4	2.4	10.5	6.2	0.3	7.0	17.4	6.5	16.2	16.7	6.4	89.6	5.4	5.4	-0.5	100.0
2016 Q1	2.1	18.6	5.4	-0.2	6.4	17.5	5.7	14.1	15.2	5.7	90.6	5.1	4.7	-0.4	100.0
Q2	2.0	20.0	5.1	0.3	6.2	18.8	5.6	13.4	14.4	5.4	91.1	4.7	4.6	-0.4	100.0
Q3	2.0	21.4	5.1	0.0	6.1	18.3	5.6	13.3	14.1	5.3	91.3	4.6	4.5	-0.4	100.0
Q4	1.9	19.6	5.2	0.9	6.3	18.5	5.8	13.8	13.9	5.5	91.2	4.7	4.5	-0.4	100.0
2017 Q1	2.0	17.6	4.9	0.3	6.3	20.9	5.9	13.9	14.0	5.5	91.2	4.8	4.4	-0.4	100.0
Q2	2.1	14.7	5.2	1.0	6.5	20.2	6.1	14.2	14.9	5.7	90.7	5.0	4.7	-0.4	100.0



Table 3: Value Added by Kind of Economic Activity at Constant 2006 Prices (P million)

Calendar year	Agriculture	Mining	Manufacturing	Water & Electricity	Construction	Trade, Hotels & Restaurants	Transport & Communication	Finance & Business Service	General Government	Social & Personal Services	Value Added	Taxes on Import	Other Taxes on products	Subsidies	Total GDP
2004	1,095.8	16,705.0	2,555.2	886.8	2,478.5	5,321.5	1,735.0	6,273.1	8,081.8	2,176.8	47,309.3	2,882.1	2,212.5	-236.1	52,167.7
2005	1,068.2	18,087.7	2,602.4	762.2	2,448.6	5,521.2	1,978.4	6,361.8	7,993.5	2,582.6	49,406.7	3,202.9	2,192.6	-257.4	54,544.8
2006	1,210.7	19,019.0	3,123.1	785.1	2,838.0	7,032.3	2,250.5	6,675.4	7,818.5	2,938.9	53,691.6	3,428.8	2,276.3	-289.8	59,106.9
2007	1,358.9	18,113.7	3,925.6	746.3	3,497.0	8,104.3	2,597.5	7,425.6	8,256.2	3,179.8	57,205.0	4,261.2	2,859.9	-327.0	63,999.1
2008	1,385.7	18,160.9	3,824.9	795.5	3,524.3	9,560.9	2,862.0	8,293.4	8,276.6	3,663.9	60,348.0	4,434.1	3,566.5	-352.6	67,996.1
2009	1,474.0	10,466.0	4,016.5	753.9	3,958.8	9,929.8	3,285.3	8,414.9	8,510.5	4,076.2	54,885.9	4,004.4	4,278.1	-375.6	62,792.8
2010	1,559.7	12,596.2	4,173.5	844.2	4,101.3	10,852.0	3,496.8	9,379.2	9,150.6	4,329.7	60,483.3	3,679.4	4,367.1	-359.8	68,170.1
2011	1,562.4	11,782.2	4,647.3	555.4	5,047.2	12,348.0	3,708.6	10,098.0	9,723.1	4,689.7	64,161.9	4,028.0	4,460.6	-357.2	72,293.3
2012	1,429.1	11,101.2	4,819.5	402.9	5,774.8	13,188.0	4,111.9	11,018.1	9,993.4	5,191.9	67,030.9	4,331.0	4,521.3	-368.4	75,514.8
2013	1,448.1	13,784.3	5,134.4	674.9	6,010.9	15,298.3	4,422.6	11,973.5	10,592.0	5,607.6	74,946.6	4,886.7	4,642.6	-395.1	84,080.7
2014	1,443.1	13,851.1	5,160.3	298.5	6,234.7	16,933.1	4,854.6	12,291.2	11,079.4	5,843.3	77,989.3	5,145.8	4,844.7	-410.3	87,569.5
2015	1,447.7	11,130.5	5,327.4	319.4	6,481.6	16,267.6	5,075.5	12,843.7	11,442.4	6,055.2	76,391.0	5,174.3	4,940.2	-424.6	86,080.8
2016	1,433.3	10,720.2	5,370.1	712.2	6,755.3	18,463.8	5,362.0	13,328.8	11,668.8	6,266.7	80,081.2	5,153.7	4,978.5	-438.3	89,775.1
2004 Q1	224.0	3,333.2	623.7	221.4	663.0	1,352.4	436.4	1,544.3	1,895.8	546.0	10,840.2	621.2	770.7	-58.0	12,174.0
Q2	369.1	3,552.5	620.5	209.3	608.9	1,354.2	396.5	1,477.6	2,054.1	526.6	11,169.3	809.4	434.8	-60.5	12,353.1
Q3	302.9	4,921.1	638.9	219.4	629.8	1,317.7	444.7	1,617.3	2,077.1	549.3	12,718.4	731.9	331.7	-55.7	13,726.4
Q4	199.8	4,898.1	672.0	236.7	576.8	1,297.1	457.4	1,633.8	2,054.6	554.8	12,581.3	719.6	675.3	-62.0	13,914.2
2005 Q1	270.8	3,807.3	618.9	190.4	614.3	1,313.8	465.4	1,550.2	1,878.8	627.5	11,337.2	807.8	753.5	-59.0	12,839.5
Q2	290.4	4,333.9	627.7	186.9	612.0	1,350.1	460.8	1,507.9	1,936.1	630.7	11,936.5	725.8	423.4	-65.8	13,019.9
Q3	324.3	4,923.6	679.7	188.9	611.9	1,386.0	527.1	1,658.4	2,020.4	660.8	12,981.1	652.3	614.1	-62.7	14,184.8
Q4	182.8	5,023.0	676.1	196.1	610.4	1,471.3	525.2	1,645.3	2,158.2	663.7	13,151.9	1,016.9	401.6	-69.9	14,500.6
2006 Q1	342.4	4,585.3	746.6	193.6	677.3	1,733.6	540.2	1,685.7	1,790.2	740.2	13,035.1	791.9	646.9	-68.5	14,405.4
Q2	244.3	4,577.9	734.5	191.5	680.2	1,710.6	553.9	1,643.9	2,024.1	728.5	13,089.3	853.7	503.8	-74.5	14,372.3
Q3	376.6	4,985.1	804.9	196.4	798.4	1,763.6	567.5	1,719.8	1,997.8	745.4	13,955.4	940.8	526.7	-69.8	15,353.1
Q4	247.4	4,870.7	837.1	203.6	682.1	1,824.5	588.9	1,626.1	2,006.4	724.9	13,611.8	842.5	598.9	-77.1	14,976.1
2007 Q1	332.6	4,517.8	931.8	193.1	791.7	1,957.8	602.0	1,923.3	1,966.2	769.2	13,985.4	810.4	614.2	-74.9	15,335.1
Q2	411.0	4,441.3	1,032.6	192.2	851.5	2,026.7	650.5	1,843.8	2,132.9	780.1	14,362.6	1,139.6	669.5	-83.7	16,088.0
Q3	409.1	4,523.4	999.9	183.0	879.4	1,981.0	667.9	1,922.4	2,094.2	823.4	14,483.8	1,151.5	761.8	-79.6	16,317.6
Q4	206.2	4,631.2	961.3	178.0	974.4	2,138.9	677.1	1,736.1	2,062.9	807.0	14,373.1	1,159.7	814.4	-88.8	16,258.4
2008 Q1	302.4	4,700.9	893.7	188.2	907.0	2,303.4	697.1	1,848.4	1,840.6	917.7	14,599.5	1,098.3	783.1	-83.1	16,397.8
Q2	404.1	4,570.7	1,020.1	194.2	874.9	2,375.3	705.7	2,075.4	2,141.6	877.4	15,239.5	1,108.0	808.2	-90.4	17,065.3
Q3	393.3	4,892.7	985.3	199.6	864.7	2,396.9	723.5	2,091.1	2,142.1	922.9	15,612.1	1,112.6	967.8	-84.9	17,607.6
Q4	285.9	3,996.5	925.8	213.5	877.7	2,485.2	735.6	2,278.6	2,152.3	945.8	14,896.9	1,115.3	1,007.4	-94.2	16,925.3
2009 Q1	373.1	2,011.2	1,036.1	171.4	977.2	2,466.2	774.8	2,135.5	2,061.2	1,023.9	13,030.5	931.5	971.4	-89.8	14,843.7
Q2	360.6	2,721.6	1,040.6	185.4	999.8	2,584.3	787.6	2,093.6	2,158.3	1,006.1	13,938.0	975.3	995.4	-97.2	15,811.5
Q3	404.8	2,616.2	943.4	184.9	1,035.2	2,504.3	846.0	2,016.1	2,149.1	1,040.0	13,740.1	1,008.1	1,124.9	-90.3	15,782.8
Q4	335.5	3,117.0	996.4	212.2	946.5	2,375.0	876.9	2,169.7	2,142.0	1,006.2	14,177.3	1,089.5	1,186.2	-98.2	16,354.8
2010 Q1	355.1	3,148.6	995.2	234.5	963.4	2,536.8	831.0	2,252.4	2,218.9	1,083.9	14,619.9	910.0	1,057.4	-83.2	16,504.1
Q2	432.8	2,905.5	1,024.9	202.3	940.2	2,719.6	848.2	2,368.4	2,253.0	1,081.3	14,776.1	874.4	1,084.1	-92.1	16,642.5
Q3	413.8	3,474.0	1,049.3	208.3	1,078.3	2,808.9	906.9	2,303.4	2,327.5	1,099.7	15,670.2	914.2	1,101.1	-87.5	17,598.1
Q4	358.0	3,068.1	1,104.1	199.1	1,119.5	2,786.7	910.7	2,455.0	2,351.2	1,064.8	15,417.2	980.8	1,124.5	-97.1	17,425.4
2011 Q1	350.7	3,021.8	1,123.2	148.6	1,183.9	3,144.7	912.6	2,478.9	2,211.0	1,130.8	15,706.2	713.0	1,163.4	-92.9	17,489.7
Q2	388.1	3,096.8	1,098.5	141.5	1,183.9	2,949.1	904.9	2,465.1	2,400.2	1,120.3	15,748.4	1,141.5	1,178.6	-81.8	17,986.8
Q3	397.2	2,914.4	1,166.5	120.0	1,320.4	3,011.0	944.5	2,479.2	2,377.7	1,198.3	15,929.2	1,127.2	951.7	-90.2	17,917.8
Q4	426.5	2,749.3	1,259.1	145.2	1,359.0	3,243.3	946.6	2,674.8	2,734.1	1,240.4	16,778.2	1,046.3	1,166.8	-92.3	18,899.0
2012 Q1	366.1	2,934.8	1,234.5	167.9	1,422.2	3,196.4	1,014.0	2,647.2	2,514.7	1,243.2	16,741.0	965.2	1,069.7	-90.5	18,685.5
Q2	358.3	2,917.5	1,174.0	83.2	1,438.6	3,241.8	1,025.4	2,688.9	2,391.9	1,281.7	16,601.3	988.0	1,084.0	-90.9	18,582.4
Q3	359.4	2,224.0	1,208.4	92.8	1,452.2	3,370.3	1,038.9	2,811.3	2,363.8	1,323.4	16,244.5	1,114.0	1,174.5	-92.8	18,440.3
Q4	345.3	3,025.0	1,202.5	59.0	1,461.8	3,379.6	1,033.6	2,870.8	2,722.9	1,343.6	17,444.0	1,263.7	1,193.1	-94.2	19,806.6

Table 3: Value Added by Kind of Economic Activity at Constant 2006 Prices (P million)

Calendar year	Agriculture	Mining	Manufacturing	Water & Electricity	Construction	Trade, Hotels & Restaurants	Transport & Communication	Finance & Business Service	General Government	Social & Personal Services	Value Added	Taxes on Import	Other Taxes on products	Subsidies	Total GDP
2013 Q1	347.7	3,081.0	1,226.1	205.3	1,484.7	3,612.4	1,067.6	3,041.0	2,743.4	1,379.3	18,188.4	1,253.0	1,164.8	-98.7	20,507.5
Q2	370.5	3,816.8	1,293.3	189.2	1,503.8	3,632.4	1,083.7	2,946.7	2,557.5	1,385.7	18,779.8	1,137.4	1,108.9	-94.6	20,931.5
Q3	371.9	3,258.7	1,319.6	231.6	1,506.0	3,973.0	1,131.5	2,952.6	2,517.5	1,404.0	18,666.5	1,180.2	1,169.9	-99.4	20,917.2
Q4	358.0	3,627.7	1,295.4	48.8	1,516.5	4,080.4	1,139.9	3,033.2	2,773.5	1,438.6	19,311.9	1,316.1	1,199.0	-102.4	21,724.5
2014 Q1	348.9	3,226.5	1,205.7	80.5	1,521.8	4,140.0	1,166.9	3,012.0	2,668.3	1,434.7	18,805.2	1,286.6	1,203.0	-104.0	21,190.8
Q2	370.6	3,561.6	1,271.3	107.5	1,558.3	4,153.6	1,206.2	3,021.7	2,852.6	1,446.8	19,550.2	1,238.1	1,201.1	-101.6	21,887.7
Q3	360.1	3,442.9	1,322.4	60.5	1,573.7	4,328.9	1,246.2	3,119.2	2,842.9	1,473.2	19,770.1	1,286.9	1,225.4	-103.7	22,178.7
Q4	363.4	3,620.1	1,361.0	50.0	1,580.9	4,310.6	1,235.4	3,138.3	2,715.6	1,488.6	19,863.8	1,334.2	1,215.2	-101.0	22,312.2
2015 Q1	353.6	3,289.8	1,287.3	83.6	1,596.4	4,077.1	1,217.0	3,108.8	2,865.8	1,499.7	19,379.1	1,299.4	1,196.4	-105.4	21,769.4
Q2	374.8	3,272.3	1,347.4	38.1	1,619.8	3,966.2	1,251.6	3,150.4	2,869.3	1,506.7	19,396.6	1,303.2	1,221.0	-105.9	21,814.9
Q3	358.4	2,047.9	1,349.9	75.5	1,627.5	4,065.8	1,308.0	3,252.7	2,901.1	1,515.8	18,502.6	1,313.9	1,262.5	-107.4	20,971.5
Q4	360.9	2,520.4	1,342.7	122.3	1,637.9	4,158.4	1,299.0	3,331.8	2,806.2	1,533.0	19,112.7	1,257.8	1,260.4	-105.9	21,525.0
2016 Q1	342.5	3,105.4	1,275.8	165.5	1,650.8	4,301.4	1,293.6	3,273.1	2,896.7	1,551.9	19,856.5	1,313.7	1,214.1	-107.2	22,277.1
Q2	362.8	2,826.0	1,352.3	194.2	1,693.7	4,762.4	1,309.2	3,259.5	2,923.5	1,559.1	20,242.7	1,277.9	1,255.1	-108.9	22,666.8
Q3	364.6	2,423.5	1,373.3	120.0	1,695.2	4,724.7	1,376.2	3,354.1	2,953.5	1,577.8	19,962.8	1,280.3	1,277.7	-111.2	22,409.5
Q4	363.5	2,365.4	1,368.7</												

Table 4: Percentage Change in Gross Value Added by Kind of Economic Activity at constant 2006 Prices

Calendar year	Agriculture	Mining	Manufacturing	Water & Electricity	Construction	Trade, Hotels & Restaurants	Transport & Communication	Finance & Business Service	General Government	Social & Personal Services	Value Added	Taxes on Import	Other Taxes on products	Subsidies	Total GDP
2005	-2.5	8.3	1.8	-14.1	-1.2	3.8	14.0	1.4	-1.1	18.6	4.4	11.1	-0.9	9.0	<b>4.6</b>
2006	13.3	5.1	20.0	3.0	15.9	27.4	13.8	4.9	-2.2	13.8	8.7	7.1	3.8	12.6	<b>8.4</b>
2007	12.2	-4.8	25.7	-4.9	23.2	15.2	15.4	11.2	5.6	8.2	6.5	24.3	25.6	12.8	<b>8.3</b>
2008	2.0	0.3	-2.6	6.6	0.8	18.0	10.2	11.7	0.2	15.2	5.5	4.1	24.7	7.8	<b>6.2</b>
2009	6.4	-42.4	5.0	-5.2	12.3	3.9	14.8	1.5	2.8	11.3	-9.1	-9.7	20.0	6.5	<b>-7.7</b>
2010	5.8	20.4	3.9	12.0	3.6	9.3	6.4	11.5	7.5	6.2	10.2	-8.1	2.1	-4.2	<b>8.6</b>
2011	0.2	-6.5	11.4	-34.2	23.1	13.8	6.1	7.7	6.3	8.3	6.1	9.5	2.1	-0.7	<b>6.0</b>
2012	-8.5	-5.8	3.7	-27.5	14.4	6.8	10.9	9.1	2.8	10.7	4.5	7.5	1.4	3.1	<b>4.5</b>
2013	1.3	24.2	6.5	67.5	4.1	16.0	7.6	8.7	6.0	8.0	11.8	12.8	2.7	7.3	<b>11.3</b>
2014	-0.4	0.5	0.5	-55.8	3.7	10.7	9.8	2.7	4.6	4.2	4.1	5.3	4.4	3.8	<b>4.1</b>
2015	0.3	-19.6	3.2	7.0	4.0	-3.9	4.5	4.5	3.3	3.6	-2.0	0.6	2.0	3.5	<b>-1.7</b>
2016	-1.0	-3.7	0.8	123.0	4.2	13.5	5.6	3.8	2.0	3.5	4.8	-0.4	0.8	3.2	<b>4.3</b>
2005 Q1	20.9	14.2	-0.8	-14.0	-7.3	-2.9	6.6	0.4	-0.9	14.9	4.6	30.0	-2.2	1.7	<b>5.5</b>
Q2	-21.3	22.0	1.2	-10.7	0.5	-0.3	16.2	2.1	-5.7	19.8	6.9	-10.3	-2.6	8.9	<b>5.4</b>
Q3	7.1	0.1	6.4	-13.9	-2.8	5.2	18.5	2.5	-2.7	20.3	2.1	-10.9	85.1	12.6	<b>3.3</b>
Q4	-8.5	2.5	0.6	-17.2	5.8	13.4	14.8	0.7	5.0	19.6	4.5	41.3	-40.5	12.7	<b>4.2</b>
2006 Q1	26.5	20.4	20.6	1.7	10.3	32.0	16.1	8.7	-4.7	18.0	15.0	-2.0	-14.2	16.0	<b>12.2</b>
Q2	-15.9	5.6	17.0	2.5	11.1	26.7	20.2	9.0	4.5	15.5	9.7	17.6	19.0	13.1	<b>10.4</b>
Q3	16.1	1.2	18.4	4.0	30.5	27.2	7.7	3.7	-1.1	12.8	7.5	44.2	-14.2	11.4	<b>8.2</b>
Q4	35.3	-3.0	23.8	3.9	11.7	24.0	12.1	-1.2	-7.0	9.2	3.5	-17.1	49.1	10.3	<b>3.3</b>
2007 Q1	-2.9	-1.5	24.8	-0.2	16.9	12.9	11.4	14.1	9.8	3.9	7.3	2.3	-5.0	9.4	<b>6.5</b>
Q2	68.3	-3.0	40.6	0.4	25.2	18.5	17.4	12.2	5.4	7.1	9.7	33.5	32.9	12.4	<b>11.9</b>
Q3	8.6	-9.3	24.2	-6.8	10.1	12.3	17.7	11.8	4.8	10.5	3.8	22.4	44.6	14.1	<b>6.3</b>
Q4	-16.7	-4.9	14.8	-12.6	42.9	17.2	15.0	6.8	2.8	11.3	5.6	37.6	36.0	15.2	<b>8.6</b>
2008 Q1	-9.1	4.1	-4.1	-2.5	14.6	17.7	15.8	-3.9	-6.4	19.3	4.4	35.5	27.5	10.9	<b>6.9</b>
Q2	-1.7	2.9	-1.2	1.1	2.7	17.2	8.5	12.6	0.4	12.5	6.1	-2.8	20.7	8.0	<b>6.1</b>
Q3	-3.9	8.2	-1.5	9.1	-1.7	21.0	8.3	8.8	2.3	12.1	7.8	-3.4	27.0	6.6	<b>7.9</b>
Q4	38.7	-13.7	-3.7	19.9	-9.9	16.2	8.6	31.2	4.3	17.2	3.6	-3.8	23.7	6.2	<b>4.1</b>
2009 Q1	23.4	-57.2	15.9	-9.0	7.7	7.1	11.1	15.5	12.0	11.6	-10.7	-15.2	24.1	8.1	<b>-9.5</b>
Q2	-10.8	-40.5	2.0	-4.5	14.3	8.8	11.6	0.9	0.8	14.7	-8.5	-12.0	23.2	7.6	<b>-7.3</b>
Q3	2.9	-46.5	-4.3	-7.4	19.7	4.5	16.9	-3.6	0.3	12.7	-12.0	-9.4	16.2	6.4	<b>-10.4</b>
Q4	17.4	-22.0	7.6	-0.6	7.8	-4.4	19.2	-4.8	-0.5	6.4	-4.8	-2.3	17.8	4.2	<b>-3.4</b>
2010 Q1	-4.8	56.6	-3.9	36.9	-1.4	2.9	7.3	5.5	7.7	5.9	12.2	-2.3	8.9	-7.4	<b>11.2</b>
Q2	20.0	6.8	-1.5	9.1	-6.0	5.2	7.7	13.1	4.4	7.5	6.0	-10.3	8.9	-5.3	<b>5.3</b>
Q3	2.2	32.8	11.2	12.7	4.2	12.2	7.2	14.3	8.3	5.7	14.0	-9.3	-2.1	-3.2	<b>11.5</b>
Q4	6.7	-1.6	10.8	-6.2	18.3	17.3	3.9	13.2	9.8	5.8	8.7	-10.0	-5.2	-1.1	<b>6.5</b>
2011 Q1	-1.2	-4.0	12.9	-36.6	22.9	24.0	9.8	10.1	-0.4	4.3	7.4	-21.7	10.0	11.6	<b>6.0</b>
Q2	-10.3	6.6	7.2	-30.0	25.9	8.4	6.7	4.1	6.5	3.6	6.6	30.6	8.7	-11.2	<b>8.1</b>
Q3	-4.0	-16.1	11.2	-42.4	22.5	7.2	4.1	7.6	2.2	9.0	1.7	23.3	-13.6	3.2	<b>1.8</b>
Q4	19.1	-10.4	14.0	-27.1	21.4	16.4	3.9	9.0	16.3	16.5	8.8	6.7	3.8	-4.9	<b>8.5</b>
2012 Q1	4.4	-2.9	9.9	12.9	20.1	1.6	11.1	6.8	13.7	9.9	6.6	35.4	-8.1	-2.6	<b>6.8</b>
Q2	-7.7	-5.8	6.9	-41.2	21.5	9.9	13.3	9.1	-0.3	14.4	5.4	-13.4	-8.0	11.1	<b>3.3</b>
Q3	-9.5	-23.7	3.6	-22.7	10.0	11.9	10.0	13.4	-0.6	10.4	2.0	-1.2	23.4	2.8	<b>2.9</b>
Q4	-19.0	10.0	-4.5	-59.3	7.6	4.2	9.2	7.3	-0.4	8.3	4.0	20.8	2.2	2.1	<b>4.8</b>
2013 Q1	-5.0	5.0	-0.7	22.3	4.4	13.0	5.3	14.9	9.1	10.9	8.6	29.8	8.9	9.0	<b>9.8</b>
Q2	3.4	30.8	10.2	127.3	4.5	12.1	5.7	9.6	6.9	8.1	13.1	15.1	2.3	4.0	<b>12.6</b>
Q3	3.5	46.5	9.2	149.6	3.7	17.9	8.9	5.0	6.5	6.1	14.9	5.9	-0.4	7.2	<b>13.4</b>
Q4	3.7	19.9	7.7	-17.3	3.7	20.7	10.3	5.7	1.9	7.1	10.7	4.1	0.5	8.7	<b>9.7</b>

Table 4: Percentage Change in Gross Value Added by Kind of Economic Activity at constant 2006 Prices

Calendar year	Agriculture	Mining	Manufacturing	Water & Electricity	Construction	Trade, Hotels & Restaurants	Transport & Communication	Finance & Business Service	General Government	Social & Personal Services	Value Added	Taxes on Import	Other Taxes on products	Subsidies	Total GDP
2014 Q1	0.3	4.7	-1.7	-60.8	2.5	14.6	9.3	-1.0	-2.7	4.0	3.4	2.7	3.3	5.4	<b>3.3</b>
Q2	0.0	-6.7	-1.7	-43.2	3.6	14.3	11.3	2.5	11.5	4.4	4.1	8.8	8.3	7.4	<b>4.6</b>
Q3	-3.2	5.7	0.2	-73.9	4.5	9.0	10.1	5.6	12.9	4.9	5.9	9.0	4.7	4.3	<b>6.0</b>
Q4	1.5	-0.2	5.1	2.5	4.2	5.6	8.4	3.5	-2.1	3.5	2.9	1.4	1.3	-1.4	<b>2.7</b>
2015 Q1	1.3	2.0	6.8	3.9	4.9	-1.5	4.3	3.2	7.4	4.5	3.1	1.0	-0.6	1.3	<b>2.7</b>
Q2	1.1	-8.1	6.0	-64.6	3.9	-4.5	3.8	4.3	0.6	4.1	-0.8	5.3	1.7	4.3	<b>-0.3</b>
Q3	-0.5	-40.5	2.1	24.7	3.4	-6.1	5.0	4.3	2.0	2.9	-6.4	2.1	3.0	3.6	<b>-5.4</b>
Q4	-0.7	-30.4	-1.3	144.6	3.6	-3.5	5.1	6.2	3.3	3.0	-3.8	-5.7	3.7	4.9	<b>-3.5</b>
2016 Q1	-3.1	-5.6	-0.9	98.0	3.4	5.5	6.3	5.3	1.1	3.5	2.5	1.1	1.5	1.8	<b>2.3</b>
Q2	-3.2	-13.6	0.4	410.4	4.6	20.1	4.6	3.5	1.9	3.5	4.4	-1.9	2.8	2.8	<b>3.9</b>
Q3	1.7	18.3	1.7	59.0	4.2	16.2	5.2	3.1	1.8	4.1	7.9	-2.6	1.2	3.6	<b>6.9</b>
Q4	0.7	-6.2	1.9	90.1	4.7	12.4	6.5	3.3	3.2	2.9	4.7	1.9	-2.3	4.8	<b>4.2</b>
2017 Q1	1.5	-28.9	-0.3	-32.2	4.0	18.7	3.8	5.4	1.3	2.1	1.1	-0.6	-1.5	3.3	<b>0.8</b>
Q2	1.2	-13.8	-0.2	6.0	4.1	2.4	5.9	5.6	1.7	2.8	0.8	4.5	0.1	1.9	<b>1.0</b>

Table 5: Gross Domestic Product by Type of Expenditure at Current Prices (P million)

Calendar year	Government Final Consumption			Household Final Consumption			Gross Fixed Capital Formation				Change in Inventories			Exports			Imports			Total GDP					
	Central Govt	Local Govt	Total	Non-Profit Institutions	Household Consumption (Mkt)	Household Consumption (Non-Mkt)	Total	Construction	Machinery & Equipment	Transport Equipment	Mineral Prospecting	Total	Livestock	Minerals	Others	Total	Gross Domestic Expenditure	Goods	Services		Total	Goods	Services	Total	Errors & Omissions
2004	7,311.3	1,319.8	8,631.1	796.4	13,795.9	2,132.5	16,724.8	6,937.7	3,531.7	1,019.8	214.4	11,703.7	87.8	511.2	930.2	1,529.3	38,588.8	17,344.6	3,511.3	20,855.9	13,475.6	3,920.8	17,396.4	-11.7	42,036.6
2005	8,361.6	1,484.7	9,846.3	1,013.0	16,096.4	2,230.5	19,340.0	8,035.7	3,624.8	950.4	249.7	12,860.5	74.1	15.5	829.2	918.9	42,965.6	22,708.3	4,151.5	26,859.8	13,729.2	4,329.3	18,058.5	-1,014.7	50,752.2
2006	8,502.4	1,568.1	10,070.5	1,217.0	19,222.9	2,452.8	22,892.7	9,930.8	4,095.6	1,159.8	300.5	15,486.6	160.7	-1,164.1	828.2	-175.2	48,274.7	26,386.1	4,499.9	30,886.0	15,283.9	4,859.8	20,143.7	89.9	59,106.9
2007	9,989.2	1,826.2	11,815.4	1,335.0	22,220.5	3,066.7	26,622.2	11,421.2	5,515.0	1,768.0	357.2	19,061.5	217.9	41.6	1,357.0	1,616.4	59,115.5	31,692.0	4,917.0	36,609.0	21,228.0	6,028.3	27,256.3	-1,315.5	67,152.7
2008	12,936.1	2,270.6	15,206.6	1,147.1	27,967.0	3,815.0	32,929.1	12,052.9	8,122.2	2,430.4	246.1	22,851.6	184.0	2,081.1	1,922.6	4,187.7	75,175.1	32,757.0	1,371.0	34,128.0	35,330.0	2,809.0	38,139.0	3,556.8	74,720.9
2009	12,971.2	2,521.7	15,492.9	1,217.0	32,077.5	3,929.1	37,223.5	14,587.8	8,077.9	2,665.8	313.9	25,645.5	191.8	547.0	2,214.8	2,953.6	81,315.5	23,866.0	1,699.6	25,565.6	33,346.0	4,770.0	38,116.0	4,697.3	73,462.4
2010	14,363.6	2,798.3	17,162.0	1,335.0	37,195.1	4,161.9	42,692.1	16,852.9	9,484.8	2,510.7	353.2	29,201.5	253.8	4,409.0	2,109.3	6,772.1	95,827.6	31,237.0	6,668.0	37,905.0	38,035.0	6,497.0	44,532.0	-2,333.2	86,867.4
2011	16,592.9	2,814.4	19,407.3	1,464.6	42,755.9	4,408.6	48,629.1	19,364.4	10,907.5	2,962.6	406.1	33,640.6	1.3	4,853.5	2,001.1	6,855.8	108,532.9	44,043.0	8,395.0	52,438.0	48,821.0	7,443.0	56,264.0	273.0	104,979.9
2012	18,342.9	2,852.7	21,195.6	1,995.2	50,789.5	4,315.5	57,100.3	23,308.9	12,601.9	3,437.1	455.5	39,803.5	187.6	221.6	2,460.8	2,869.9	120,969.3	45,886.0	8,226.0	54,112.0	61,074.0	6,391.0	67,465.0	2,254.1	109,870.4
2013	20,005.4	3,209.3	23,214.7	2,154.9	57,512.1	5,442.5	65,109.5	26,629.9	12,316.1	2,408.1	571.0	41,925.1	-261.6	-4,752.3	-103.3	-5,117.2	125,132.2	66,551.0	10,437.0	76,988.0	69,385.0	7,508.0	76,893.0	-68.8	125,158.3
2014	25,343.8	3,733.9	29,077.7	2,308.3	60,279.5	5,887.0	68,474.7	28,775.8	12,346.4	2,697.1	613.3	44,432.7	165.0	-417.1	-3,547.0	-3,799.1	138,186.0	76,594.0	12,138.0	88,732.0	71,734.0	6,951.0	78,685.0	-2,364.7	145,868.4
2015	26,034.1	4,022.6	30,056.7	2,460.1	67,271.0	6,278.1	76,009.2	31,329.6	15,132.9	2,532.9	648.0	49,643.4	1485.7	2,825.6	-7,099.0	-2,787.6	152,921.7	63,528.0	12,695.0	76,223.0	71,793.0	6,363.0	78,156.0	-5,065.2	145,923.4
2016	26,662.8	4,284.0	30,946.8	2,662.5	71,712.2	6,746.4	81,121.1	34,784.0	15,116.2	2,397.1	688.5	52,985.8	69.4	-2,037.2	-9,563.9	-11,531.7	153,522.0	80,197.4	13,813.7	94,011.1	65,843.9	5,837.4	71,681.2	-6,163.9	169,687.9
2004 Q1	1,845.5	354.9	2,200.4	181.5	3,317.9	466.8	3,966.2	1,640.7	785.6	286.9	51.0	2,764.2	21.3	104.6	359.0	484.8	9,415.6	4,182.0	1,046.3	5,228.3	2,846.0	1,095.1	3,941.1	-449.5	10,253.3
Q2	1,753.4	316.7	2,070.1	192.8	3,394.3	433.5	4,020.6	1,686.8	957.3	243.1	52.4	2,939.6	39.0	-298.7	349.9	90.2	9,120.5	3,625.7	595.8	4,221.5	3,411.2	886.8	4,298.0	29.2	9,073.2
Q3	1,883.2	314.1	2,197.3	204.7	3,369.4	647.1	4,221.2	1,780.3	866.1	259.1	55.0	2,960.5	16.9	406.6	116.8	540.3	9,919.4	4,946.5	677.0	5,623.5	3,481.0	1,051.5	4,532.5	466.4	11,476.8
Q4	1,829.1	334.2	2,163.3	217.4	3,714.3	585.0	4,516.7	1,829.9	922.6	230.8	56.0	3,039.3	10.7	298.7	104.6	414.0	10,133.3	4,590.4	1,192.2	5,782.6	3,737.4	887.3	4,624.7	-57.8	11,233.4
2005 Q1	2,298.6	406.0	2,704.6	230.9	3,992.9	458.6	4,682.4	1,879.0	899.1	357.2	53.4	3,188.8	12.2	-620.1	218.5	-389.3	10,186.5	5,538.7	1,168.1	6,706.8	3,363.9	1,239.0	4,602.9	52.7	12,343.1
Q2	1,802.4	318.2	2,120.6	245.2	3,694.1	571.8	4,511.1	1,931.6	830.2	185.4	50.9	2,998.2	15.7	-129.7	184.2	70.3	9,700.1	4,871.5	536.7	5,408.2	3,251.0	994.0	4,245.0	263.4	11,126.7
Q3	1,973.4	353.2	2,326.6	260.4	4,085.9	603.9	4,950.1	2,083.3	935.0	207.4	68.0	3,293.7	30.7	597.7	189.2	817.6	11,388.0	7,020.6	961.4	7,982.0	3,289.8	1,034.3	4,324.2	-858.2	14,187.7
Q4	2,287.2	407.3	2,694.5	276.5	4,323.5	596.3	5,196.4	2,141.7	960.5	200.3	77.3	3,379.8	15.5	167.6	237.2	420.3	11,691.0	5,277.5	1,485.3	6,762.8	3,824.5	1,062.0	4,886.4	-472.7	13,094.7
2006 Q1	1,970.0	374.1	2,344.2	293.7	4,531.2	412.8	5,237.6	2,394.5	828.8	270.9	66.6	3,560.8	31.6	-1,284.0	199.0	-1,053.4	10,089.2	6,028.7	1,269.1	7,297.8	3,158.9	1,298.3	4,457.2	1,072.2	14,002.0
Q2	1,963.6	375.1	2,338.8	299.0	4,323.7	703.5	5,326.1	2,461.6	964.0	262.0	65.6	3,753.2	25.8	7,957.6	185.3	8,168.8	19,586.9	6,090.1	649.3	6,739.4	3,925.3	1,080.4	5,005.8	-8,110.6	13,209.9
Q3	2,202.5	402.2	2,604.8	316.9	5,246.7	630.4	6,194.0	2,569.3	1,106.0	293.0	84.6	4,052.9	59.3	-11,495.1	248.6	-11,187.2	1,664.5	6,214.5	924.3	7,138.8	4,023.7	1,345.3	5,369.0	12,781.5	16,215.7
Q4	2,366.2	416.6	2,782.9	307.4	5,121.3	706.2	6,134.9	2,505.4	1,196.8	333.9	83.7	4,119.7	44.0	3,657.4	195.3	3,896.7	16,934.1	8,052.8	1,657.2	9,710.0	4,175.9	1,135.8	5,311.7	-5,653.2	15,679.3
2007 Q1	2,494.9	435.4	2,930.4	304.3	4,680.0	733.3	5,717.7	2,661.9	1,074.2	380.3	82.5	4,198.8	49.9	-262.6	185.3	-27.4	12,819.5	8,956.0	1,397.0	10,353.0	4,192.0	1,697.0	5,889.0	-1,549.6	15,733.9
Q2	2,367.2	437.2	2,804.4	312.7	5,186.7	728.0	6,227.4	2,769.6	1,285.8	488.6	84.9	4,628.8	69.9	-147.2	189.6	112.3	13,773.0	7,693.0	649.0	8,342.0	5,160.0	1,197.0	6,357.0	16.4	15,774.4
Q3	2,549.9	475.9	3,025.9	359.6	5,997.3	731.7	7,088.6	2,939.9	1,644.1	492.0	95.6	5,171.7	62.1	1,650.7	478.3	2,191.0	17,477.2	8,923.0	1,369.0	10,292.0	5,395.0	1,549.3	6,944.3	-2,310.6	18,514.2
Q4	2,577.2	477.6	3,054.7	358.5	6,356.5	873.5	7,588.6	3,049.8	1,510.9	407.1	94.3	5,062.1	36.0	-1,199.3	503.8	-659.5	15,045.9	6,120.0	1,502.0	7,622.0	6,481.0	1,585.0	8,066.0	2,528.3	17,130.1
2008 Q1	3,253.2	546.6	3,799.7	334.9	5,704.2	803.7	6,842.8	2,831.3	1,990.9	526.2	68.1	5,416.4	36.0	125.4	559.5	720.9	16,779.8	9,018.0	367.0	9,385.0	7,505.0	650.0	8,155.0	-525.2	17,484.6
Q2	3,087.6	558.5	3,646.0	379.8	6,463.1	966.4	7,809.3	2,913.9	1,956.4	621.5	56.1	5,547.9	43.0	-130.2	521.0	433.9	17,437.1	8,259.0	357.0	8,616.0	8,835.0	676.0	9,511.0	744.8	17,286.9
Q3	3,088.1	559.3	3,647.4	209.7	8,073.8	975.2	9,258.7	3,174.0	1,884.8	590.7	64.4	5,713.9	49.3	-427.0	402.7	25.0	18,645.0	10,776.0	265.0	11,041.0	9,677.0	651.0	10,328.0	790.9	20,148.9
Q4	3,507.2	606.2	4,113.5	222.7	7,725.8	1,069.8	9,018.3	3,133.7	2,290.0	692.0	57.6	6,173.4	55.7	2,513.0	439.3	3,008.0	22,313.1	4,704.0	382.0	5,086.0	9,313.0	832.0	10,145.0	2,546.3	19,800.4
2009 Q1	3,235.4	620.2	3,855.6	307.8	7,103.8	904.6	8,316.1	3,311.1	1,865.6	802.8	62.4	6,041.9	51.4	885.3	679.4	1,616.1	19,829.7	3,886.0	317.6	4,203.6	7,736.0	1,096.0	8,832.0	1,394.7	16,596.0
Q2	3,443.0	653.7	4,096.7	296.0	6,924.3	1,162.2	8,382.4	3,723.9	2,106.8	568.1	79.2	6,478.1	46.4	-350.2	444.6	140.8	19,098.1	6,590.0	633.0	7,223.0	8,001.0	1,295.0	9,296.0	1,706.5	18,731.5
Q3	3,033.0	608.5	3,641.5	310.4	9,134.0	933.3	10,377.7	4,025.5	1,930.9	495.8	90.9	6,543.1	44.0	72.3	409.0	525.3	21,087.6	6,825.0	359.0	7,184.0	8,422.0	1,050.0	9,472.0	-327.7	18,471.9
Q4	3,259.8	639.2	3,899.1	302.8	8,915.5	929.0	10,147.3	3,527.2	2,174.6	799.2	81.4	6,582.4	50.1	-60.5	681.7	671.4	21,300.1	6,565.0	390.0	6,955.0	9,187.0	1,329.0	10,516.0	1,923.9	19,663.0
2010 Q1	3,448.5	671.6	4,120.1	319.3	7,830.2	1,044.0	9,193.5	3,718.7	2,280.9	677.0	70.2	6,746.7	57.7	568.2	472.2	1,098.1	21,158.4	7,167.0	1,528.0	8,695.0	9,199.0	1,426.0	10,625.0	389.3	19,617.7
Q2	3,603.3	699.0	4,302.3	335.0	9,298.0	1,048.9	10,681.9	4,118.3	2,251.0	608.7	89.2	7,067.2	51.0	914.1	523.7	1,488.8	23,540.1	7,103.0	1,683.0	8,786.0	8,771.0	1,772.0	10,543.0	-868.2	20,914.9
Q3	3,665.2	711.7	4,376.9	349.4	10,652.3	1,030.3	12,032.0	4,302.8	2,633.7	634.9	102.3	7,673.6	61.9	1,129.5	546.8	1,738.2	25,820.7	8							

Table 5: Gross Domestic Product by Type of Expenditure at Current Prices (P million)

Calendar year	Government Final Consumption			Household Final Consumption				Gross Fixed Capital Formation				Change in Inventories				Exports			Imports			Total GDP			
	Central Govt	Local Govt	Total	Non-Profit Institutions	Household Consumption (Mkt)	Household Consumption (Non-Mkt)	Total	Construction	Machinery & Equipment	Transport Equipment	Mineral Prospecting	Total	Livestock	Minerals	Others	Total	Gross Domestic Expenditure	Goods	Services	Total	Goods		Services	Total	Errors & Omissions
2012 Q1	4,371.3	707.4	<b>5,078.8</b>	479.9	9,325.5	1,116.2	<b>10,921.7</b>	5,712.3	3,053.4	836.4	118.8	<b>9,720.9</b>	45.4	712.8	637.8	<b>1,396.0</b>	27,117.4	9,783.0	1,975.0	<b>11,758.0</b>	12,823.0	1,521.0	<b>14,344.0</b>	1,512.7	<b>26,044.1</b>
Q2	4,931.2	711.3	<b>5,642.5</b>	489.3	13,148.6	1,048.1	<b>14,686.0</b>	5,372.4	3,251.4	961.2	93.9	<b>9,678.8</b>	50.2	-122.6	578.1	<b>505.7</b>	30,513.1	10,414.0	2,014.0	<b>12,428.0</b>	12,903.0	1,648.0	<b>14,551.0</b>	-664.0	<b>27,726.0</b>
Q3	4,470.0	710.5	<b>5,180.5</b>	519.9	13,589.5	1,002.9	<b>15,112.3</b>	5,906.6	3,146.8	832.8	119.7	<b>10,005.9</b>	60.9	-1,110.1	641.4	<b>-407.8</b>	29,890.9	13,556.0	1,961.0	<b>15,517.0</b>	19,499.0	1,925.0	<b>21,424.0</b>	3,557.9	<b>27,541.9</b>
Q4	4,570.3	723.5	<b>5,293.8</b>	506.1	14,725.9	1,148.3	<b>16,380.3</b>	6,317.7	3,150.3	806.8	123.1	<b>10,397.8</b>	31.1	741.5	603.4	<b>1,376.0</b>	33,447.9	12,133.0	2,276.0	<b>14,409.0</b>	15,849.0	1,297.0	<b>17,146.0</b>	-2,152.5	<b>28,558.5</b>
2013 Q1	4,839.4	750.0	<b>5,589.4</b>	518.3	13,874.1	1,218.7	<b>15,611.1</b>	6,497.2	2,509.3	586.0	140.5	<b>9,733.1</b>	-140.5	-4,500.8	718.1	<b>-3,923.2</b>	27,010.3	16,867.0	2,151.0	<b>19,018.0</b>	16,218.0	1,859.0	<b>18,077.0</b>	474.3	<b>28,425.6</b>
Q2	4,955.4	774.7	<b>5,730.0</b>	535.7	13,616.5	1,541.2	<b>15,693.3</b>	6,637.0	3,293.9	716.9	142.1	<b>10,789.9</b>	-70.1	-304.8	1,374.8	<b>999.9</b>	33,213.1	14,736.0	2,675.0	<b>17,411.0</b>	17,064.0	2,010.0	<b>19,074.0</b>	912.7	<b>32,462.8</b>
Q3	5,070.9	807.3	<b>5,878.3</b>	545.5	14,503.8	1,330.7	<b>16,379.9</b>	6,650.2	3,176.6	480.2	143.5	<b>10,450.4</b>	-30.2	-197.2	-2,420.8	<b>-2,648.2</b>	30,060.4	19,550.0	2,792.0	<b>22,342.0</b>	17,127.0	1,996.0	<b>19,123.0</b>	-1,613.7	<b>31,665.7</b>
Q4	5,139.7	877.4	<b>6,017.1</b>	555.5	15,517.8	1,351.9	<b>17,425.2</b>	6,845.6	3,336.2	625.0	144.9	<b>10,951.8</b>	-20.8	250.5	224.6	<b>454.3</b>	34,848.4	15,398.0	2,819.0	<b>18,217.0</b>	18,976.0	1,643.0	<b>20,619.0</b>	157.8	<b>32,604.2</b>
2014 Q1	5,996.4	895.3	<b>6,891.7</b>	565.3	14,174.6	1,363.5	<b>16,103.5</b>	6,994.6	3,189.6	626.6	149.2	<b>10,960.1</b>	-41.9	-120.9	70.0	<b>-92.7</b>	33,862.6	17,271.0	2,947.0	<b>20,218.0</b>	17,908.0	1,742.0	<b>19,650.0</b>	77.8	<b>34,508.4</b>
Q2	6,401.8	933.5	<b>7,335.4</b>	573.2	14,368.1	1,488.1	<b>16,429.4</b>	7,220.8	2,977.9	720.1	151.8	<b>11,070.7</b>	-17.0	-295.5	-498.4	<b>-810.9</b>	34,024.5	21,095.0	2,911.0	<b>24,006.0</b>	18,382.0	1,626.0	<b>20,008.0</b>	-304.1	<b>37,718.4</b>
Q3	6,496.0	956.5	<b>7,452.5</b>	580.8	15,515.2	1,524.7	<b>17,620.7</b>	7,250.6	2,392.8	686.7	153.6	<b>10,483.7</b>	53.7	189.0	-1,909.3	<b>-1,666.6</b>	33,890.3	19,845.0	3,099.0	<b>22,944.0</b>	17,774.0	1,631.0	<b>19,405.0</b>	-1,273.7	<b>36,155.6</b>
Q4	6,449.5	948.6	<b>7,398.1</b>	589.0	16,221.5	1,510.6	<b>18,321.1</b>	7,309.8	3,786.1	663.7	158.6	<b>11,918.2</b>	170.3	-189.8	-1,209.3	<b>-1,228.8</b>	36,408.6	18,383.0	3,181.0	<b>21,564.0</b>	17,670.0	1,952.0	<b>19,622.0</b>	-864.7	<b>37,486.0</b>
2015 Q1	6,357.9	962.7	<b>7,320.6</b>	596.6	15,718.3	1,539.3	<b>17,854.2</b>	7,547.4	3,267.7	578.3	163.6	<b>11,557.0</b>	332.8	89.3	-1,692.8	<b>-1,270.7</b>	35,461.1	19,510.0	2,723.0	<b>22,233.0</b>	18,171.0	1,688.0	<b>19,859.0</b>	-1,264.8	<b>36,570.3</b>
Q2	6,547.1	1,005.3	<b>7,552.4</b>	606.9	16,649.2	1,573.5	<b>18,829.6</b>	7,847.5	3,884.8	638.1	154.9	<b>12,525.2</b>	413.2	207.8	-2,335.9	<b>-1,714.9</b>	37,192.3	19,832.0	3,276.0	<b>23,108.0</b>	19,700.0	1,569.0	<b>21,269.0</b>	-1,701.7	<b>37,329.7</b>
Q3	6,497.5	1,021.8	<b>7,519.3</b>	620.8	16,935.2	1,568.9	<b>19,124.9</b>	7,889.4	4,155.2	637.6	161.3	<b>12,843.5</b>	411.7	782.1	460.3	<b>1,654.1</b>	41,141.8	11,852.0	3,372.0	<b>15,224.0</b>	17,803.0	1,548.0	<b>19,351.0</b>	225.5	<b>37,240.2</b>
Q4	6,631.6	1,032.8	<b>7,664.4</b>	635.8	17,968.4	1,596.3	<b>20,200.5</b>	8,045.3	3,825.2	679.0	168.2	<b>12,717.6</b>	328.0	1,746.4	-3,530.5	<b>-1,456.1</b>	39,126.4	12,334.0	3,324.0	<b>15,658.0</b>	16,119.0	1,558.0	<b>17,677.0</b>	-2,324.3	<b>34,783.2</b>
2016 Q1	6,691.2	1,069.2	<b>7,760.4</b>	646.1	16,930.8	1,692.3	<b>19,269.2</b>	8,315.7	3,201.5	503.6	173.4	<b>12,194.2</b>	162.3	-715.9	-2,447.1	<b>-3,000.6</b>	36,223.3	19,730.9	3,317.0	<b>23,047.9</b>	16,272.1	1,052.5	<b>17,324.6</b>	-2,447.1	<b>39,499.5</b>
Q2	6,856.2	1,064.8	<b>7,921.0</b>	657.6	17,214.8	1,713.2	<b>19,585.6</b>	8,598.4	3,884.7	598.5	165.7	<b>13,247.3</b>	38.1	-178.2	-5,905.4	<b>-6,045.6</b>	34,708.3	25,387.9	3,290.0	<b>28,677.8</b>	16,979.8	1,460.4	<b>18,440.2</b>	-2,505.4	<b>42,440.5</b>
Q3	6,507.8	1,072.1	<b>7,579.9</b>	671.5	18,486.1	1,724.8	<b>20,882.4</b>	8,899.4	3,850.1	725.8	171.2	<b>13,646.5</b>	-44.8	-1,189.3	-1,114.3	<b>-2,348.4</b>	39,760.4	18,911.1	3,303.5	<b>22,214.6</b>	15,513.6	1,256.4	<b>16,770.1</b>	-1,114.3	<b>44,090.6</b>
Q4	6,607.6	1,077.9	<b>7,685.4</b>	687.2	19,080.5	1,616.1	<b>21,383.9</b>	8,970.6	4,179.8	569.3	178.2	<b>13,897.8</b>	-86.2	46.2	-97.0	<b>-137.0</b>	42,830.1	16,167.5	3,903.3	<b>20,070.8</b>	17,078.3	2,068.1	<b>19,146.4</b>	-97.0	<b>43,657.4</b>
2017 Q1	6,753.1	1,105.7	<b>7,858.8</b>	695.1	19,454.8	1,689.1	<b>21,838.9</b>	8,979.5	2,811.0	398.3	182.0	<b>12,370.8</b>	-87.1	-158.0	-3,412.0	<b>-3,657.0</b>	38,411.5	17,289.0	3,603.0	<b>20,892.0</b>	11,567.0	1,487.0	<b>13,054.0</b>	-2,603.9	<b>43,645.6</b>
Q2	7,204.7	1,166.2	<b>8,370.9</b>	710.6	19,393.4	1,759.2	<b>21,863.2</b>	9,248.9	2,683.4	439.3	174.7	<b>12,546.3</b>	-94.8	327.9	-1,449.1	<b>-1,216.1</b>	41,564.4	14,821.4	3,753.1	<b>18,574.5</b>	13,907.0	1,777.5	<b>15,684.5</b>	-1,449.1	<b>43,005.2</b>

Note: 2014-2016 estimates are provisional

**Table 6: Gross Domestic Product by Type of Expenditure at Constant Prices (P million)**

Calendar Year	Government Final Consumption			Household Final Consumption				Gross Fixed Capital Formation				Change in Inventories				Exports			Imports			Total GDP			
	Central Govt	Local Govt	Total	Non-Profit Institutions	Household Consumption (Mkt)	Household Consumption (Non-Mkt)	Total	Construction	Machinery & Equipment	Transport Equipment	Mineral Prospecting	Total	Livestock	Minerals	Others	Total	Gross Domestic Expenditure	Goods	Services	Total	Goods		Services	Total	Errors & Omissions
2004	9,695.9	1,499.1	<b>11,195.0</b>	837.6	14,545.3	2,242.9	<b>17,625.7</b>	8,757.6	4,167.6	1,064.3	225.5	<b>14,215.1</b>	75.9	191.2	978.4	<b>1,245.5</b>	44,281.4	21,072.7	4,265.8	<b>25,338.5</b>	16,328.3	4,851.9	<b>21,180.2</b>	3,728.1	<b>52,167.7</b>
2005	8,918.5	1,568.8	<b>10,487.3</b>	1,022.1	16,252.3	2,250.6	<b>19,525.0</b>	9,190.2	4,062.8	974.9	251.9	<b>14,479.8</b>	80.7	-417.5	1,236.7	<b>899.9</b>	45,392.0	25,319.2	4,628.6	<b>29,947.8</b>	15,303.7	4,831.1	<b>20,134.8</b>	-660.2	<b>54,544.8</b>
2006	8,502.4	1,568.1	<b>10,070.5</b>	1,217.0	19,222.9	2,452.8	<b>22,892.7</b>	9,930.8	4,095.6	1,159.7	300.5	<b>15,486.5</b>	160.7	-1,164.1	828.2	<b>-175.2</b>	48,274.6	26,386.1	4,499.9	<b>30,886.0</b>	15,271.4	4,872.3	<b>20,143.7</b>	90.0	<b>59,106.9</b>
2007	8,798.4	1,626.7	<b>10,425.1</b>	1,326.2	21,952.7	3,046.3	<b>26,325.1</b>	10,268.9	4,901.3	1,718.7	354.9	<b>17,243.8</b>	125.3	-509.8	1,347.9	<b>963.4</b>	54,957.5	28,663.8	4,841.7	<b>33,505.6</b>	19,411.8	5,758.8	<b>25,170.6</b>	706.7	<b>63,999.1</b>
2008	9,193.5	1,751.4	<b>10,944.9</b>	1,082.0	26,187.9	3,598.5	<b>30,868.4</b>	9,213.3	6,121.7	2,251.6	232.2	<b>17,818.8</b>	157.2	801.9	1,813.5	<b>2,772.6</b>	62,404.8	27,555.5	5,119.2	<b>32,674.7</b>	24,666.2	4,920.2	<b>29,586.5</b>	2,503.0	<b>67,996.1</b>
2009	9,520.5	1,748.7	<b>11,269.2</b>	1,076.4	28,024.6	3,475.3	<b>32,576.3</b>	10,779.1	6,103.4	2,349.7	277.7	<b>19,509.9</b>	209.3	-300.6	1,561.0	<b>1,469.7</b>	64,825.2	18,677.1	1,688.9	<b>20,365.9</b>	21,737.6	4,628.8	<b>26,366.4</b>	3,968.0	<b>62,792.8</b>
2010	9,945.7	1,744.3	<b>11,690.0</b>	1,110.1	30,813.3	3,460.7	<b>35,384.1</b>	11,711.9	7,089.7	2,205.0	293.7	<b>21,300.2</b>	163.4	3,300.2	1,753.9	<b>5,217.6</b>	73,591.9	22,264.8	1,364.5	<b>23,629.3</b>	23,305.3	4,769.8	<b>28,075.1</b>	-976.0	<b>68,170.1</b>
2011	10,442.4	1,830.7	<b>12,273.1</b>	1,166.9	33,491.6	3,512.7	<b>38,171.2</b>	13,136.3	7,931.9	2,496.9	323.6	<b>23,888.6</b>	236.2	794.4	1,594.4	<b>2,625.1</b>	76,958.1	28,696.4	1,441.9	<b>30,138.2</b>	27,882.9	5,589.6	<b>33,472.5</b>	-1,330.5	<b>72,293.3</b>
2012	12,229.8	1,912.5	<b>14,142.3</b>	1,127.5	33,673.4	2,853.2	<b>37,654.1</b>	14,140.5	9,782.2	2,908.3	310.1	<b>27,141.0</b>	217.5	154.4	1,615.9	<b>1,987.7</b>	80,925.2	30,069.2	5,445.9	<b>35,515.1</b>	40,012.4	4,197.3	<b>44,209.7</b>	3,284.2	<b>75,514.8</b>
2013	14,059.4	2,118.1	<b>16,177.5</b>	989.8	37,035.6	3,430.1	<b>41,455.5</b>	15,747.1	9,491.1	2,063.6	387.2	<b>27,689.0</b>	-106.5	-2,742.1	1,355.6	<b>-1,493.0</b>	83,828.9	41,836.5	6,570.8	<b>48,407.2</b>	44,042.4	4,916.8	<b>48,959.1</b>	803.7	<b>84,080.7</b>
2014	15,751.2	2,170.3	<b>17,921.5</b>	1,029.1	37,260.6	3,518.0	<b>41,807.7</b>	16,364.1	9,145.1	2,193.5	393.7	<b>28,096.4</b>	-77.6	-571.9	-1,753.9	<b>-2,403.3</b>	85,422.3	44,926.1	7,254.0	<b>52,180.0</b>	43,908.9	4,794.7	<b>48,703.7</b>	-1,329.2	<b>87,569.5</b>
2015	16,095.2	2,279.9	<b>18,375.1</b>	1,061.8	38,840.3	3,549.0	<b>43,451.1</b>	16,920.6	11,178.0	2,059.7	398.1	<b>30,556.4</b>	570.9	2,666.4	-2,116.7	<b>1,120.7</b>	93,503.3	36,082.6	7,169.1	<b>43,251.8</b>	44,323.3	4,560.6	<b>48,883.9</b>	-1,790.4	<b>86,080.8</b>
2016	16,068.4	2,391.3	<b>18,459.6</b>	1,093.2	39,751.2	3,575.9	<b>44,420.3</b>	17,626.2	11,661.6	1,971.7	410.2	<b>31,669.7</b>	-74.9	-2,479.6	-3,918.4	<b>-6,472.9</b>	88,076.8	41,986.5	7,292.4	<b>49,278.9</b>	41,377.1	4,465.9	<b>45,843.0</b>	-1,737.7	<b>89,775.1</b>
2004 Q1	2,469.8	420.1	<b>2,889.9</b>	197.2	3,606.9	507.5	<b>4,311.6</b>	2,198.2	957.4	308.4	57.4	<b>3,521.4</b>	19.5	107.3	353.8	<b>480.6</b>	11,203.5	5,246.3	1,311.1	<b>6,557.4</b>	3,969.3	1,550.0	<b>5,519.3</b>	-67.6	<b>12,174.0</b>
Q2	2,282.8	356.3	<b>2,639.2</b>	203.1	3,584.2	457.1	<b>4,244.4</b>	2,204.1	1,131.4	253.5	55.9	<b>3,644.8</b>	32.9	-242.9	361.8	<b>151.8</b>	10,680.1	4,411.1	724.1	<b>5,135.2</b>	3,890.3	1,018.4	<b>4,908.7</b>	1,446.5	<b>12,353.1</b>
Q3	2,487.8	348.3	<b>2,836.0</b>	213.4	3,520.7	675.3	<b>4,409.5</b>	2,271.6	1,013.1	267.3	56.4	<b>3,608.4</b>	14.7	211.8	132.7	<b>359.2</b>	11,213.1	5,956.2	814.3	<b>6,770.5</b>	4,219.0	1,275.6	<b>5,494.6</b>	1,237.4	<b>13,726.4</b>
Q4	2,455.5	374.4	<b>2,829.9</b>	223.9	3,833.4	602.9	<b>4,660.2</b>	2,083.7	1,065.8	235.2	55.8	<b>3,440.5</b>	8.9	115.0	130.1	<b>254.0</b>	11,184.6	5,459.1	1,416.3	<b>6,875.4</b>	4,249.7	1,007.9	<b>5,257.6</b>	1,111.7	<b>13,914.2</b>
2005 Q1	2,637.3	455.2	<b>3,092.5</b>	245.7	4,241.5	488.6	<b>4,975.8</b>	2,240.6	1,061.0	382.2	59.4	<b>3,743.3</b>	13.9	-367.0	291.6	<b>-61.6</b>	11,750.0	6,506.6	1,376.9	<b>7,883.4</b>	3,850.1	1,411.9	<b>5,262.0</b>	-1,531.9	<b>12,839.5</b>
Q2	1,907.2	340.8	<b>2,247.9</b>	251.6	3,787.2	587.3	<b>4,626.2</b>	2,264.6	944.5	191.3	59.6	<b>3,460.1</b>	17.1	-146.8	327.2	<b>197.5</b>	10,531.7	5,517.6	609.9	<b>6,127.5</b>	3,784.4	1,150.6	<b>4,935.1</b>	1,295.8	<b>13,019.9</b>
Q3	2,105.1	363.0	<b>2,468.1</b>	257.9	4,047.0	598.6	<b>4,903.5</b>	2,318.4	1,027.5	206.7	68.7	<b>3,621.3</b>	33.3	93.0	291.3	<b>417.5</b>	11,410.4	7,673.6	1,054.4	<b>8,728.0</b>	3,857.9	1,217.0	<b>5,074.8</b>	-878.8	<b>14,184.8</b>
Q4	2,268.9	409.8	<b>2,678.8</b>	266.9	4,176.5	576.1	<b>5,019.5</b>	2,366.6	1,029.8	194.7	64.1	<b>3,655.2</b>	16.4	3.4	326.7	<b>346.5</b>	11,699.9	5,621.4	1,587.4	<b>7,208.8</b>	3,811.3	1,051.6	<b>4,862.9</b>	454.8	<b>14,500.6</b>
2006 Q1	2,173.8	397.2	<b>2,571.0</b>	302.8	4,669.8	426.7	<b>5,399.3</b>	2,591.2	814.0	279.5	73.3	<b>3,758.0</b>	33.8	-908.7	199.1	<b>-675.8</b>	11,052.5	6,222.0	1,309.2	<b>7,531.2</b>	3,344.2	1,361.2	<b>4,705.4</b>	527.1	<b>14,405.4</b>
Q2	2,013.9	385.2	<b>2,399.1</b>	300.2	4,344.4	708.4	<b>5,353.0</b>	2,566.2	922.3	263.3	70.6	<b>3,822.4</b>	26.4	5,494.3	203.9	<b>5,724.7</b>	17,299.2	6,123.0	652.5	<b>6,775.5</b>	3,713.0	1,018.9	<b>4,731.9</b>	-4,970.5	<b>14,372.3</b>
Q3	2,130.6	387.3	<b>2,517.9</b>	312.5	5,179.1	623.3	<b>6,114.8</b>	2,611.3	1,140.3	289.2	77.4	<b>4,118.1</b>	59.7	-7,515.1	229.3	<b>-7,226.1</b>	5,524.7	6,134.3	911.9	<b>7,046.2</b>	4,059.6	1,357.0	<b>5,416.6</b>	8,198.8	<b>15,353.1</b>
Q4	2,184.1	398.4	<b>2,582.5</b>	301.5	5,029.6	694.5	<b>6,025.6</b>	2,162.1	1,219.0	327.7	79.2	<b>3,788.0</b>	40.7	1,765.4	195.9	<b>2,002.1</b>	14,398.2	7,906.8	1,626.4	<b>9,533.2</b>	4,154.6	1,135.2	<b>5,289.8</b>	-3,665.4	<b>14,976.1</b>
2007 Q1	2,275.5	401.6	<b>2,677.0</b>	308.7	4,843.2	749.4	<b>5,901.3</b>	2,272.3	1,010.9	395.2	111.8	<b>3,790.3</b>	33.6	-612.9	328.6	<b>-250.6</b>	12,117.9	8,483.5	1,336.2	<b>9,819.7</b>	4,022.6	1,635.4	<b>5,657.9</b>	-944.6	<b>15,335.1</b>
Q2	2,061.3	390.9	<b>2,452.2</b>	308.8	5,232.4	724.4	<b>6,265.6</b>	2,507.7	1,246.2	494.4	72.9	<b>4,321.2</b>	40.5	867.8	352.7	<b>1,261.1</b>	14,300.1	6,696.6	604.2	<b>7,300.8</b>	4,727.3	1,154.7	<b>5,882.0</b>	369.0	<b>16,088.0</b>
Q3	2,249.6	419.4	<b>2,669.0</b>	354.8	5,794.4	720.7	<b>6,869.9</b>	2,883.9	1,278.1	391.1	86.4	<b>4,639.4</b>	34.2	-962.5	346.9	<b>-581.4</b>	13,596.9	8,417.3	1,262.2	<b>9,679.5</b>	4,885.1	1,471.4	<b>6,356.5</b>	-602.4	<b>16,317.6</b>
Q4	2,212.0	414.9	<b>2,626.9</b>	353.8	6,082.7	851.7	<b>7,288.3</b>	2,605.0	1,366.1	438.0	83.7	<b>4,492.9</b>	17.0	197.8	319.6	<b>534.4</b>	14,942.5	5,066.4	1,639.1	<b>6,705.5</b>	5,776.9	1,497.4	<b>7,274.3</b>	1,884.7	<b>16,258.4</b>
2008 Q1	2,478.5	417.8	<b>2,896.3</b>	308.5	5,905.1	840.4	<b>7,054.0</b>	2,194.6	1,483.9	500.6	46.9	<b>4,226.0</b>	33.8	-192.6	1,419.6	<b>1,260.9</b>	15,437.1	8,262.0	1,565.7	<b>9,827.7</b>	5,776.8	1,464.1	<b>7,240.9</b>	-1,626.0	<b>16,397.8</b>
Q2	2,076.3	418.9	<b>2,495.2</b>	250.7	6,098.8	916.9	<b>7,266.4</b>	2,385.1	1,528.2	577.6	59.0	<b>4,549.8</b>	34.8	392.9	-214.0	<b>213.7</b>	14,525.1	6,932.1	1,074.4	<b>8,006.5</b>	6,272.6	1,133.1	<b>7,405.7</b>	1,939.5	<b>17,065.3</b>
Q3	2,263.8	448.7	<b>2,712.5</b>	256.9	7,286.9	882.9	<b>8,426.7</b>	2,289.2	1,528.2	543.3	67.0	<b>4,427.7</b>	27.2	-400.4	258.8	<b>-114.3</b>	15,452.5	8,634.0	1,370.8	<b>10,004.8</b>	6,473.4	1,103.5	<b>7,576.9</b>	-272.8	<b>17,607.6</b>
Q4	2,375.1	465.9	<b>2,841.0</b>	265.9	6,897.0	958.3	<b>8,121.3</b>	2,344.4	1,581.5	630.1	59.4	<b>4,615.4</b>	61.4	1,002.0	349.0	<b>1,412.4</b>	16,990.0	3,727.4	1,108.4	<b>4,835.8</b>	6,143.4	1,219.6	<b>7,363.0</b>	2,462.4	<b>16,925.3</b>
2009 Q1	2,648.1	460.7	<b>3,108.8</b>	267.8	6,591.8	814.8	<b>7,674.5</b>	2,600.7	1,403.8	718.2	56.1	<b>4,778.8</b>	42.6	-47.4	388.7	<b>383.8</b>	15,945.9	3,519.0	350.2	<b>3,869.2</b>	5,274.9	1,133.6	<b>6,408.5</b>	1,437.1	<b>14,843.7</b>
Q2	2,231.3	420.5	<b>2,651.8</b>	265.6	6,033.6	1,037.4	<b>7,336.6</b>	2,890.8	1,617.7	503.2	70.5	<b>5,082.2</b>	51.8	-286.0	393.6	<b>159.4</b>	15,230.1	5,021.7	504.7	<b>5,526.3</b>	5,409.2	1,252.9	<b>6,662.2</b>	1,717.3	<b>15,811.5</b>
Q3	2,331.6	436.7	<b>2,768.3</b>	276.4	7,898.3	814.4	<b>8,989.0</b>	2,821.6	1,442.3	434.6	80.1	<b>4,778.6</b>	62.4	-3.2	374.0	<b>433.2</b>	16,969.2	5,212.6	453.3	<b>5,665.8</b>	5,558.1	1,172.9	<b>6,730.9</b>	-121.3	<b>15,782.8</b>
Q4	2,309.4	430.8	<b>2,740.3</b>	266.7	7,501.0	808.6																			



**Table 6: Gross Domestic Product by Type of Expenditure at Constant Prices (P million)**

Calendar year	Government Final Consumption			Household Final Consumption				Gross Fixed Capital Formation					Change in Inventories				Exports			Imports			Errors & Omissions	Total GDP	
	Central Govt	Local Govt	Total	Non-Profit Institutions	Household Consumption (Mkt)	Household Consumption (Non-Mkt)	Total	Construction	Machinery & Equipment	Transport Equipment	Mineral Prospecting	Total	Livestock	Minerals	Others	Total	Gross Domestic Expenditure	Goods	Services	Total	Goods	Services			Total
<b>2013 Q1</b>	3,687.8	524.5	<b>4,212.2</b>	244.1	9,698.6	780.0	<b>10,722.7</b>	3,875.9	1,987.5	507.6	95.7	<b>6,466.6</b>	-47.2	-2,461.8	364.2	<b>-2,144.8</b>	19,256.8	11,123.7	1,376.7	<b>12,500.4</b>	10,296.5	1,180.2	<b>11,476.7</b>	227.1	<b>20,507.5</b>
<b>Q2</b>	3,313.9	526.5	<b>3,840.4</b>	245.2	9,057.5	980.4	<b>10,283.1</b>	3,919.5	2,564.7	615.6	96.6	<b>7,196.3</b>	-22.3	-798.8	924.9	<b>103.9</b>	21,423.7	9,388.2	1,701.6	<b>11,089.9</b>	10,872.4	1,303.7	<b>12,176.1</b>	594.0	<b>20,931.5</b>
<b>Q3</b>	3,219.5	530.4	<b>3,750.0</b>	248.5	8,869.7	841.3	<b>9,959.5</b>	3,960.7	2,436.4	411.2	97.1	<b>6,905.4</b>	-14.2	23.5	-504.8	<b>-495.5</b>	20,119.4	11,648.4	1,765.1	<b>13,413.6</b>	10,924.6	1,326.2	<b>12,250.7</b>	-365.1	<b>20,917.2</b>
<b>Q4</b>	3,838.2	536.7	<b>4,374.9</b>	252.0	9,409.8	828.4	<b>10,490.2</b>	3,991.0	2,502.6	529.3	97.8	<b>7,120.7</b>	-22.9	495.0	571.3	<b>1,043.4</b>	23,029.0	9,676.1	1,727.3	<b>11,403.4</b>	11,948.9	1,106.7	<b>13,055.6</b>	347.7	<b>21,724.5</b>
<b>2014 Q1</b>	3,894.1	555.1	<b>4,449.2</b>	254.4	9,764.2	828.7	<b>10,847.3</b>	4,036.1	2,406.2	529.2	98.0	<b>7,069.5</b>	-48.5	-328.1	-137.5	<b>-514.1</b>	21,852.0	10,155.9	1,791.0	<b>11,946.9</b>	11,277.9	1,211.3	<b>12,489.2</b>	-118.9	<b>21,190.8</b>
<b>Q2</b>	3,986.8	529.8	<b>4,516.6</b>	255.5	8,943.7	893.2	<b>10,092.4</b>	4,099.6	2,168.3	577.6	98.1	<b>6,943.5</b>	-47.1	-182.7	-715.8	<b>-945.6</b>	20,607.0	12,308.3	1,747.2	<b>14,055.5</b>	11,150.2	1,116.0	<b>12,266.3</b>	-508.4	<b>21,887.7</b>
<b>Q3</b>	3,872.3	535.9	<b>4,408.1</b>	258.1	8,970.3	907.4	<b>10,135.8</b>	4,092.9	1,769.5	551.8	98.2	<b>6,512.3</b>	-18.7	425.2	-573.5	<b>-167.0</b>	20,889.2	11,755.5	1,844.3	<b>13,599.8</b>	10,764.8	1,121.9	<b>11,886.8</b>	-423.6	<b>22,178.7</b>
<b>Q4</b>	3,998.0	549.5	<b>4,547.5</b>	261.2	9,582.4	888.7	<b>10,732.3</b>	4,135.5	2,801.1	534.8	99.5	<b>7,571.0</b>	36.7	-486.3	-327.1	<b>-776.7</b>	22,074.1	10,706.4	1,871.4	<b>12,577.8</b>	10,715.9	1,345.5	<b>12,061.4</b>	-278.3	<b>22,312.2</b>
<b>2015 Q1</b>	3,987.7	571.3	<b>4,559.0</b>	262.9	9,914.7	891.9	<b>11,069.5</b>	4,139.6	2,403.6	462.5	102.3	<b>7,108.0</b>	119.1	56.7	-1,099.7	<b>-924.0</b>	21,812.4	11,434.7	1,577.7	<b>13,012.4</b>	11,079.2	1,165.4	<b>12,244.5</b>	-810.9	<b>21,769.4</b>
<b>Q2</b>	4,050.5	561.6	<b>4,612.1</b>	264.0	9,368.4	897.2	<b>10,529.6</b>	4,231.8	2,822.9	512.6	95.4	<b>7,662.7</b>	161.5	104.8	-907.1	<b>-640.7</b>	22,163.6	11,468.3	1,868.0	<b>13,336.2</b>	11,891.8	1,096.3	<b>12,988.1</b>	-696.8	<b>21,814.9</b>
<b>Q3</b>	3,953.2	571.5	<b>4,524.8</b>	266.4	9,747.5	880.6	<b>10,894.6</b>	4,273.1	3,076.9	522.9	98.4	<b>7,971.4</b>	163.9	105.8	753.4	<b>1,023.2</b>	24,413.9	6,462.1	1,892.6	<b>8,354.7</b>	11,075.6	1,123.1	<b>12,198.7</b>	401.6	<b>20,971.5</b>
<b>Q4</b>	4,103.7	575.6	<b>4,679.3</b>	268.5	9,809.7	879.3	<b>10,957.5</b>	4,276.1	2,874.5	561.7	102.0	<b>7,814.3</b>	126.5	2,399.2	-863.3	<b>1,662.3</b>	25,113.4	6,717.6	1,830.8	<b>8,548.4</b>	10,276.7	1,175.8	<b>11,452.5</b>	-684.3	<b>21,525.0</b>
<b>2016 Q1</b>	4,031.8	595.6	<b>4,627.4</b>	270.4	10,170.8	910.8	<b>11,352.0</b>	4,321.1	2,519.7	412.6	104.6	<b>7,358.0</b>	49.0	-1,837.9	251.8	<b>-1,537.0</b>	21,800.3	9,988.4	1,785.3	<b>11,773.7</b>	10,704.9	840.4	<b>11,545.2</b>	248.3	<b>22,277.1</b>
<b>Q2</b>	4,076.5	588.7	<b>4,665.2</b>	271.9	9,355.1	909.1	<b>10,536.0</b>	4,435.8	3,132.0	501.6	99.0	<b>8,168.5</b>	-9.1	-375.3	-2,574.4	<b>-2,958.7</b>	20,411.0	13,314.1	1,745.7	<b>15,059.8</b>	10,880.3	1,144.2	<b>12,024.6</b>	-779.4	<b>22,666.8</b>
<b>Q3</b>	3,842.0	598.3	<b>4,440.2</b>	275.5	9,994.0	909.4	<b>11,178.8</b>	4,432.5	2,929.0	594.9	101.6	<b>8,058.0</b>	-47.8	-474.0	-1,206.6	<b>-1,728.4</b>	21,948.6	10,068.5	1,738.4	<b>11,806.9</b>	9,582.2	948.8	<b>10,531.0</b>	-815.0	<b>22,409.5</b>
<b>Q4</b>	4,118.1	608.7	<b>4,726.8</b>	275.5	10,231.3	846.7	<b>11,353.5</b>	4,436.8	3,080.9	462.6	105.0	<b>8,085.3</b>	-67.1	207.7	-389.3	<b>-248.7</b>	23,916.8	8,615.5	2,023.0	<b>10,638.6</b>	10,209.7	1,532.5	<b>11,742.2</b>	-391.6	<b>22,421.6</b>
<b>2017 Q1</b>	4,029.0	617.8	<b>4,646.8</b>	276.2	10,244.5	867.8	<b>11,388.6</b>	4,482.7	1,993.2	307.0	106.4	<b>6,889.3</b>	-67.8	-5.8	-2,650.0	<b>-2,723.6</b>	20,201.1	9,374.7	1,851.1	<b>11,225.8</b>	6,651.0	1,076.7	<b>7,727.7</b>	-1,233.9	<b>22,465.4</b>
<b>Q2</b>	4,208.6	629.2	<b>4,837.8</b>	280.9	10,146.9	898.8	<b>11,326.6</b>	4,600.4	1,878.0	330.7	101.4	<b>6,910.4</b>	-73.8	409.8	-779.0	<b>-443.0</b>	22,631.8	8,084.7	1,917.5	<b>10,002.2</b>	7,684.0	1,292.6	<b>8,976.6</b>	-771.3	<b>22,886.1</b>

Note: 2014-2016 estimates are provisional