

STATISTICS BOTSWANA



Consumer Price Index

MAY 2017

Contact Statistician:
Phaladi Labobedi

Statistics Botswana. Private Bag 0024 Gaborone Botswana
Tel: (+267) 367 1300. **Fax:** (+267) 395 2201. **Email:** info@statsbots.org.bw **Website:** www.statsbots.org.bw

CONTENTS

COMMENTARY

Section 1: Headline Inflation

Section 2: Core Inflation

CHARTS

1. National Rates of Inflation, May 2014 – May 2017
2. Monthly Changes in the Cost-of-Living Index, May 2014 – May 2017
3. Non-Tradable Inflation Rates, May 2014 – May 2017
4. Tradable Inflation Rates, May 2014 – May 2017

TABLES

1. Cost-of-Living Index Series (January 2014 – May 2017)
2. National Cost-of-Living Group and Section Indices
3. Cost-of-Living Index by Tradability (January 2014 – May 2017)
4. Core Inflation Rates
5. Annual Average Inflation Rates 2007-2016

GLOSSARY

COMMENTARY

Section 1: Headline Inflation

The annual inflation rate in May 2017 was 3.5 percent, which is an increase of 0.1 of a percentage point on the April 2017 rate of 3.4 percent. The inflation rates for regions between April 2016 and May 2017 indicated that Cities & Towns went up to 3.4 percent from 3.3 percent, Urban Villages' increased to 3.1 percent from 3.0 percent, and Rural Villages' dropped to 4.1 percent from 4.2 percent.

The May national Consumer Price index moved from 102.5 in April 2017 to 102.7 in May 2017, an increase of 0.2 percent. The Cities & Towns' index realized a rise of 0.2 percent, moving from 102.3 to 102.5. The Urban Villages' index' rose by 0.2 percent, advancing from 102.4 in April 2017 to 102.6 in May 2017, while Rural Villages index moved from 102.8 to 103.0 between the two months.

Group indices were generally stable between April and May 2017, recording changes of less than 1.0 percent.

The Alcoholic Beverages, Tobacco & Narcotics index group advanced from 104.1 to 104.7, recording a rise of 0.5 percent between April and May. The rise was attributed to the general increase in the section indices.

The Food & Non-Alcoholic Beverages index group registered a rise of 0.3 percent from 103.1 to 103.4 between April and May. The rise was due to the increase in the section indices, especially; Sugar, Jam, Honey, Chocolate & Confectionery (2.9 percent), Coffee, Tea & Cocoa (2.6 percent) and Fish (Fresh, Chilled & Frozen) 1.0 percent).

The Restaurants & Hotels index group advanced from 102.2 to 102.5, recording a rise of 0.3 percent between April and May. Contributing to the increase was generally the rise in the section indices.

All-Tradable inflation rate was 3.4 percent in May 2017, an increase of 0.1 of a percentage point on the April 2017 rate of 3.3 percent. The Imported Tradable inflation rate rose from 2.7 percent in April to 2.9 percent in May. The Non-Tradable inflation rate dropped to 3.7 percent in May from 3.8 percent in April. The Domestic Tradable inflation rate remained unchanged at 4.3 percent between April and May.

The *All-Tradable* index moved from 102.5 in April to 102.7 in May recording a rise of 0.2 percent. The Imported Tradable index advanced from 102.1 in April to 102.3 in May registering an increase of 0.2 percent. The *Domestic Tradable* index moved from 103.4 to 103.7 between the two periods, while the *Non-Tradable* index advanced from 102.4 in April to 102.6 in May registering an increase of 0.1 percent.

Section 2: Core Inflation

The Trimmed Mean Core Inflation rate remained unchanged at 3.1 percent between April and May 2017. The Core Inflation rate by exclusion registered an increase of 0.1 of a percentage point moving from 3.3 percent in April 2017 to 3.4 percent in May 2017.

CHARTS

Chart 1: National Inflation Rate 2014 - 2017

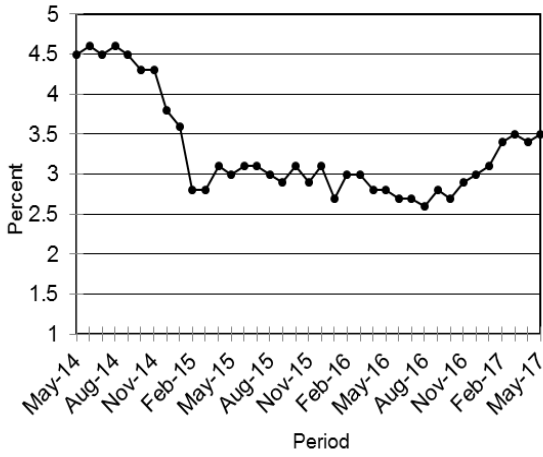


Chart 2: Monthly Changes in Cost-of-Living Index 2014 - 2017

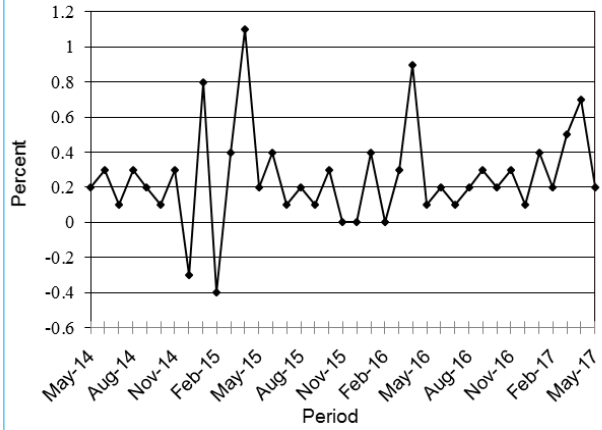


Chart 3: Non-Tradable Inflation 2014 - 2017

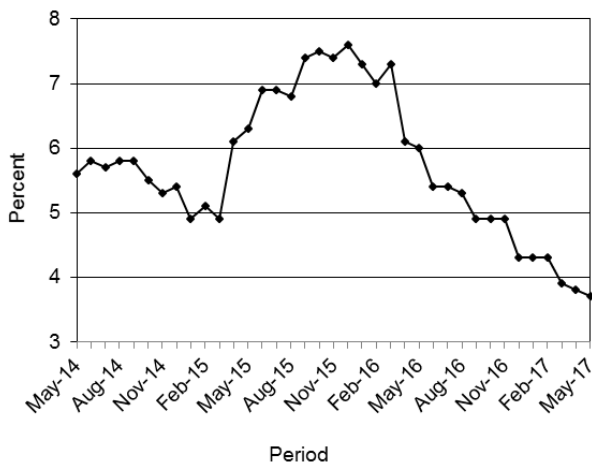
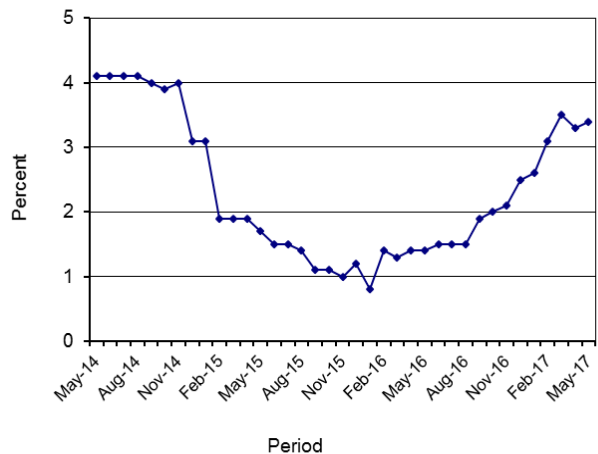


Chart 4: Tradable Inflation 2014 - 2017



A.N. Majelantle
Statistician General
 15th June 2017

TABLES

TABLE 1: COST OF LIVING INDEX (September 2016 =100.0)

		Food	Alcohol and Tobacco	Clothing and Footwear	Housing	Furniture etc	Health	Transport	Communication	Rec. & Culture	Education	Rest. & Hotels	Miscellaneous
Weights		16.51	7.83	6.27	14.90	6.39	3.62	20.65	4.27	2.92	3.34	2.76	10.55
2014	Jan	94.3	87.6	84.2	85.1	88.8	88.7	108.2	99.5	90.1	90.6	88.5	82.2
	Feb	94.6	89.5	84.6	85.2	88.8	88.8	108.3	99.5	90.2	90.6	89.0	82.3
	Mar	94.9	90.8	85.0	85.7	89.8	88.9	107.7	99.5	90.3	90.6	89.4	82.3
	Apr	95.2	91.7	85.3	86.8	90.0	89.5	107.7	99.5	91.7	90.6	89.8	86.0
	May	95.5	92.4	85.8	86.8	90.1	89.6	107.7	99.5	91.8	90.6	90.2	86.1
	Jun	95.7	92.5	86.4	87.2	91.0	91.5	107.7	99.5	91.9	90.6	90.4	86.2
	Jul	95.8	92.6	86.8	87.2	91.1	91.6	107.8	99.5	92.0	90.6	90.7	86.2
	Aug	95.9	92.6	87.1	87.2	91.5	91.7	108.8	99.5	92.1	90.6	91.2	86.3
	Sept	96.0	92.7	87.5	87.5	92.1	91.9	108.9	99.5	92.4	90.6	91.4	86.3
	Oct	96.1	92.8	87.9	87.5	92.2	91.9	108.9	99.5	92.4	90.6	91.5	86.4
	Nov	96.3	92.8	88.5	87.6	92.6	92.1	109.5	99.5	92.7	90.6	91.7	86.8
	Dec	96.5	92.8	89.1	88.4	93.0	92.1	106.7	99.5	92.9	90.6	91.9	86.8
2015	Jan	96.5	94.9	89.7	88.4	94.1	94.4	107.0	99.5	92.9	96.4	92.6	87.0
	Feb	96.7	95.8	90.7	88.3	94.9	94.5	102.4	99.5	93.2	96.4	94.0	87.2
	Mar	96.7	96.8	91.4	88.9	95.5	94.6	102.5	99.5	93.3	96.4	94.5	87.2
	Apr	96.7	97.2	91.8	92.2	95.7	94.6	102.7	99.5	97.7	96.4	94.6	92.5
	May	96.7	97.5	92.3	92.1	95.9	96.9	102.7	100.0	97.9	96.4	94.8	92.5
	Jun	96.6	97.6	92.9	93.7	96.6	97.0	102.8	100.0	97.9	96.4	95.4	92.9
	Jul	96.7	97.8	93.3	93.7	96.7	97.3	102.9	100.0	98.1	96.4	95.6	93.0
	Aug	96.9	98.0	94.1	93.8	97.0	97.3	102.9	100.0	98.1	96.5	95.9	93.1
	Sept	97.0	97.3	94.6	96.0	97.6	97.5	101.8	100.0	98.2	96.5	96.2	93.1
	Oct	97.2	98.2	95.2	96.0	97.9	97.5	101.8	100.0	98.4	96.5	97.1	93.2
	Nov	97.2	98.4	95.6	95.9	97.8	97.6	101.8	100.0	98.5	96.5	97.3	93.2
	Dec	97.2	98.5	96.0	97.0	98.1	97.6	100.5	100.0	98.6	96.5	97.6	93.1
2016	Jan	97.6	98.6	96.8	97.1	98.2	97.6	100.5	100.0	98.9	99.9	97.9	93.6
	Feb	98.2	98.7	97.4	96.9	98.3	97.7	99.1	100.0	99.5	99.9	98.2	93.3
	Mar	98.5	98.8	98.0	98.2	98.5	97.8	99.2	100.0	99.6	99.9	98.4	93.5
	Apr	99.3	99.3	98.5	98.2	98.7	98.0	99.5	100.0	99.6	100.0	98.7	99.6
	May	99.4	99.4	98.9	98.2	98.8	99.9	99.5	100.0	99.7	100.0	98.9	99.6
	Jun	99.1	99.6	99.4	99.0	99.3	100.0	99.8	100.0	99.6	100.0	99.2	99.9
	Jul	99.3	99.9	99.6	99.0	99.4	100.0	99.9	100.0	99.7	100.0	99.3	100.0
	Aug	99.7	100.0	99.9	99.0	99.5	100.0	100.0	100.0	99.8	100.0	99.6	100.0
	Sept	100.0	100.0	100.0	100.0	100.0	100.0	100.0	100.0	100.0	100.0	100.0	100.0
	Oct	100.4	100.7	100.2	100.0	100.2	100.0	100.0	100.0	100.2	100.0	100.2	100.4
	Nov	100.9	101.2	100.6	100.1	100.6	100.2	100.1	100.0	100.2	100.0	100.5	100.5
	Dec	101.0	101.3	100.7	100.2	100.8	100.3	100.2	100.0	100.2	100.0	100.6	100.5
2017	Jan	101.9	102.3	101.2	100.4	101.2	100.8	99.7	100.1	100.7	104.0	101.4	100.7
	Feb	102.3	103.0	101.4	100.6	101.7	100.9	99.8	100.1	101.1	104.1	101.7	101.0
	Mar	102.8	103.6	101.7	101.0	102.1	101.1	100.9	100.1	101.3	104.1	102.0	101.4
	Apr	103.1	104.1	101.9	104.8	102.3	101.2	101.0	100.1	102.0	104.1	102.2	101.5
	May	103.4	104.7	102.1	104.9	102.4	101.2	101.1	100.2	102.0	104.1	102.5	101.6
% Change on													
Last month		0.3	0.5	0.2	0.1	0.2	0.0	0.2	0.1	0.0	0.0	0.3	0.1

Consumer Price Index- May 2017

TABLE 1: COST OF LIVING INDEX (Cont.)

		All Items Index	National Inflation Rate	Monthly Change	Towns & Cities Index	Urban Village Index	Rural Villages Index	Annual Inflation		
								Towns & Cities	Urban Villages	Rural
		100.0	%	%	41.8	34.5	23.7	%	%	%
2014	Jan	92.0	4.4	0.9	92.0	92.3	91.6	4.0	4.5	5.0
	Feb	92.4	4.6	0.4	92.5	92.6	92.0	4.5	4.7	5.1
	Mar	92.7	4.4	0.3	92.8	93.0	92.1	4.4	4.3	4.6
	Apr	93.5	4.5	0.8	93.6	93.6	93.0	4.4	4.3	5.3
	May	93.7	4.5	0.2	93.7	93.9	93.1	4.2	4.6	5.2
	Jun	94.0	4.6	0.3	94.1	94.1	93.4	4.4	4.5	5.1
	Jul	94.1	4.5	0.1	94.2	94.3	93.4	4.3	4.5	5.0
	Aug	94.3	4.6	0.3	94.5	94.5	93.7	4.5	4.5	5.0
	Sept	94.5	4.5	0.2	94.5	94.7	94.1	4.3	4.4	5.0
	Oct	94.6	4.3	0.1	94.6	94.7	94.3	4.2	4.2	4.8
	Nov	94.9	4.3	0.3	94.9	95.0	94.5	4.3	4.3	4.5
	Dec	94.6	3.8	(0.3)	94.7	94.9	94.2	3.8	3.8	3.6
2015	Jan	95.4	3.6	0.8	95.3	95.7	95.0	3.6	3.7	3.7
	Feb	95.0	2.8	(0.4)	94.9	95.2	95.0	2.6	2.9	3.2
	Mar	95.3	2.8	0.4	95.1	95.6	95.4	2.5	2.8	3.6
	Apr	96.4	3.1	1.1	96.5	96.3	96.1	3.1	3.0	3.4
	May	96.5	3.0	0.2	96.5	96.5	96.5	3.0	2.8	3.6
	Jun	96.9	3.1	0.4	96.9	96.9	96.6	3.1	3.0	3.4
	Jul	97.0	3.1	0.1	97.1	97.1	96.7	3.1	3.0	3.5
	Aug	97.2	3.0	0.2	97.2	97.3	96.9	2.8	3.0	3.4
	Sept	97.3	2.9	0.1	97.3	97.4	97.2	2.9	2.8	3.3
	Oct	97.6	3.1	0.3	97.7	97.6	97.2	3.2	3.0	3.1
	Nov	97.6	2.9	0.0	97.7	97.6	97.3	2.9	2.7	3.0
	Dec	97.6	3.1	(0.0)	97.7	97.5	97.4	3.2	2.8	3.4
2016	Jan	97.9	2.7	0.4	97.9	98.1	97.7	2.7	2.6	2.8
	Feb	97.9	3.0	(0.0)	97.7	98.2	97.9	2.9	3.2	3.1
	Mar	98.2	3.0	0.3	98.1	98.6	98.0	3.1	3.2	2.7
	Apr	99.1	2.8	0.9	99.0	99.4	98.7	2.6	3.2	2.7
	May	99.2	2.8	0.1	99.1	99.5	98.9	2.7	3.1	2.5
	Jun	99.4	2.7	0.2	99.4	99.7	99.1	2.5	2.8	2.6
	Jul	99.6	2.7	0.1	99.5	99.7	99.6	2.5	2.7	3.0
	Aug	99.7	2.6	0.2	99.6	99.9	99.8	2.6	2.6	2.9
	Sept	100.0	2.8	0.3	100.0	100.0	100.0	2.8	2.7	2.9
	Oct	100.2	2.7	0.2	100.2	100.2	100.2	2.5	2.7	3.1
	Nov	100.4	2.9	0.3	100.3	100.4	100.7	2.7	2.9	3.5
	Dec	100.5	3.0	0.1	100.4	100.4	100.9	2.8	3.0	3.5
2017	Jan	101.0	3.1	0.4	100.9	100.8	101.3	3.1	2.8	3.6
	Feb	101.2	3.4	0.2	101.1	101.1	101.6	3.5	2.9	3.8
	Mar	101.7	3.5	0.5	101.6	101.6	102.1	3.6	3.0	4.2
	Apr	102.5	3.4	0.7	102.3	102.4	102.8	3.3	3.0	4.2
	May	102.7	3.5	0.2	102.5	102.6	103.0	3.4	3.1	4.1
% Change on last month		0.2			0.2	0.2	0.2			

TABLE 2 : NATIONAL COST-OF-LIVING GROUP AND SECTION INDICES (SEPTEMBER 2016=100.0)

	Group Section	Weights	This month May 2017	Last month Apr 2017	3 months ago Feb 2017	6 months ago Dec 2016	12 months ago May 2016	Percentage Change			
								Last month	3 months ago	6 months ago	12 months ago
1	Food & Non-Alcoholic Beverages	16.51	103.4	103.1	102.3	101.0	99.4	0.3	1.1	2.4	4.1
1.1	Bread & Cereals	5.27	102.4	102.1	101.6	100.7	96.4	0.3	0.8	1.6	6.2
1.2	Meat (Fresh, Chilled & Frozen)	0.36	104.6	104.9	103.6	100.9	100.2	(0.2)	1.0	3.7	4.4
1.3	Fish (Fresh, Chilled & Frozen)	0.92	103.1	102.1	101.5	100.8	98.6	1.0	1.6	2.2	4.5
1.4	Milk, Cheese & Milk Products	2.66	100.1	99.9	99.5	99.8	99.6	0.2	0.5	0.3	0.5
1.5	Oils & Fats	0.17	102.5	102.2	102.0	101.1	99.8	0.3	0.5	1.4	2.7
1.6	Fruit	1.49	106.8	107.3	106.4	103.1	97.6	(0.4)	0.4	3.5	9.4
1.7	Vegetables	0.70	102.8	103.6	103.5	101.9	108.2	(0.8)	(0.7)	0.9	(5.0)
1.8	Sugar, Jam, Honey, Chocolate & Confectionery	0.86	109.1	106.0	103.2	101.6	96.4	2.9	5.7	7.3	13.2
1.9	Food not else where Classified	1.80	101.7	101.3	100.8	100.1	100.1	0.4	0.9	1.6	1.6
1.10	Coffee, Tea & Cocoa	1.29	108.3	105.5	103.4	100.6	98.3	2.6	4.7	7.7	10.2
1.11	Mineral Waters, Soft Drinks, Fruits & Veg. Juices	0.99	101.5	101.0	100.6	100.6	100.2	0.4	0.8	0.9	1.3
2	Alcoholic Beverages, Tobacco & Narcotics	7.83	104.7	104.1	103.0	101.3	99.4	0.5	1.6	3.3	5.2
2.1	Alcoholic Beverages	6.19	104.9	104.4	103.4	101.4	99.5	0.5	1.4	3.4	5.4
2.2	Tobacco	1.65	103.8	103.1	101.4	100.7	98.8	0.7	2.3	3.0	5.0
3	Clothing and Footwear	6.27	102.1	101.9	101.5	100.6	98.9	0.2	0.6	1.4	3.3
3.1	Clothing	2.42	101.7	101.6	101.1	100.6	98.7	0.1	0.6	1.1	3.1
3.2	Other articles of Clothing	1.01	101.6	101.4	100.7	100.6	99.5	0.2	0.9	1.0	2.2
3.3	Cleaning, Repair & Hire	0.99	102.7	102.5	102.4	100.2	99.8	0.3	0.3	2.5	2.9
3.4	Footwear	1.85	102.5	102.2	102.0	101.0	98.7	0.3	0.5	1.5	3.8
4	Housing, Water, Electr. Gas & Other Fuels	14.90	104.9	104.8	100.6	100.3	98.2	0.1	4.3	4.6	6.8
4.1	Rent paid by Tenants	6.25	100.6	100.6	100.0	100.0	96.1	0.0	0.6	0.6	4.7
4.2	Materials for Maintenance & Repair of dwellings	4.29	102.5	102.3	101.7	100.8	100.2	0.2	0.8	1.7	2.3
4.3	Water Supply & Misc. Services	1.50	125.4	125.4	100.0	100.0	100.0	0.0	25.4	25.4	25.4
4.4	Electricity Gas and other Fuels	2.86	106.8	106.8	100.4	100.1	99.9	0.0	6.4	6.7	6.9
5	Furnishing, H/H Equipment & Routine Maintenance	6.39	102.4	102.3	101.7	100.8	98.8	0.2	0.7	1.6	3.7
5.1	Furniture & Furnishing	1.65	101.9	102.2	101.7	101.0	99.1	(0.3)	0.2	0.9	2.8
5.2	Carpets & Other Floor Coverings	0.24	102.4	102.2	101.9	101.1	99.1	0.1	0.4	1.3	3.3
5.3	Household Textiles	0.41	102.0	101.8	101.6	101.1	98.6	0.2	0.3	0.9	3.4
5.4	Household Appliances	0.85	102.2	102.2	101.8	101.4	99.5	0.0	0.4	0.8	2.7
5.5	Glassware, Tableware & Household Utensils	0.40	101.0	101.0	100.7	100.6	100.0	(0.0)	0.3	0.4	1.0
5.6	Small Tools, Miscellaneous Accessories	0.06	101.3	101.3	101.0	100.3	99.6	0.0	0.3	1.0	1.7
5.7	Goods & Services for H/hold Maintenance	2.78	103.1	102.6	101.8	100.6	98.3	0.5	1.3	2.5	4.9

TABLE 2 : NATIONAL COST-OF-LIVING GROUP AND SECTION INDICES (SEPTEMBER 2016=100.0) Cont'd

	Group Section	Weights	This month May 2017	Last month Apr 2017	3 months ago Feb 2017	6 months ago Dec 2016	12 months ago May 2016	Percentage Change			
								on: Last month	3 months ago	6 months ago	12 months ago
6	Health	3.62	101.2	101.2	100.9	100.3	99.9	0.0	0.3	0.9	1.3
6.1	Medical Products, App. & Equip.	0.81	104.4	104.4	103.1	101.3	99.7	0.0	1.3	3.1	4.7
6.2	Out-patient Services	0.70	101.1	101.1	101.1	100.0	100.0	0.0	0.0	1.1	1.1
6.3	Hospital Services	2.10	100.0	100.0	100.0	100.0	100.0	0.0	0.0	0.0	0.0
7	Transport	20.65	101.1	101.0	99.8	100.2	99.5	0.2	1.3	1.0	1.7
7.1	Purchase of Vehicles	5.29	98.6	98.4	98.7	100.2	98.5	0.2	(0.1)	(1.6)	0.0
7.2	Operation of Personal Transport	11.13	102.6	102.6	100.3	100.2	99.9	0.0	2.3	2.3	2.7
7.3	Transport Services	4.22	100.5	100.0	100.0	100.0	100.0	0.5	0.5	0.5	0.5
8	Communication	4.27	100.2	100.1	100.1	100.0	100.0	0.1	0.1	0.2	0.2
8.1	Postal Services	0.15	100.0	100.0	100.0	100.0	100.0	0.0	0.0	0.0	0.0
8.2	Telephone & Telefax Equipment	0.71	100.9	100.5	100.4	100.0	100.0	0.4	0.5	0.9	0.9
8.3	Telephone & Telefax Services	3.41	100.0	100.0	100.0	100.0	100.0	0.0	0.0	0.0	0.0
9	Recreation & Culture	2.92	102.0	102.0	101.1	100.3	99.7	0.0	0.9	1.7	2.3
9.1	Audio Visual, Photographic & Info. Proce. Equip.	1.96	101.8	101.8	101.4	100.3	99.5	0.0	0.3	1.4	2.3
9.2	Other Recreational Items & Equip.	0.46	100.6	100.6	100.5	100.4	99.6	(0.0)	0.0	0.2	1.0
9.3	Recreational & Cultural Services	0.37	104.8	104.8	100.0	100.0	100.0	0.0	4.8	4.8	4.8
9.4	Newspapers, Books & Stationary	0.13	102.4	102.1	100.7	100.3	99.0	0.3	1.7	2.1	3.4
10	Education	3.34	104.1	104.1	104.1	100.0	100.0	0.0	0.0	4.1	4.1
10.1	Pre-Primary & Primary Education	0.80	105.1	105.1	105.0	100.0	100.0	0.0	0.0	5.1	5.1
10.2	Secondary & Tertiary Education	2.54	103.8	103.8	103.8	100.0	100.0	0.0	0.0	3.8	3.8
11	Restaurants & Hotels	2.76	102.5	102.2	101.7	100.6	98.9	0.3	0.9	1.9	3.7
11.1	Restaurants, Cafes and the Like	2.31	102.7	102.5	101.9	100.7	98.9	0.2	0.8	2.0	3.9
11.2	Accommodation Services	0.45	101.8	100.9	100.6	100.5	98.7	0.9	1.2	1.3	3.2
12	Miscellaneous Goods & Services	10.55	101.6	101.5	101.0	100.5	99.6	0.1	0.6	1.1	2.0
12.1	Personal Care	1.71	103.2	103.1	101.7	100.8	99.4	0.1	1.5	2.4	3.8
12.2	Personal Effects N.E.C.	1.24	102.4	102.2	102.0	100.3	98.9	0.2	0.4	2.1	3.5
12.3	Social Protection	0.07	102.0	102.0	102.0	100.0	100.0	0.0	0.0	2.0	2.0
12.4	Insurance	4.73	101.0	101.0	100.7	100.7	99.6	0.0	0.3	0.3	1.4
12.5	Financial Services	0.79	102.5	101.8	101.1	100.6	99.4	0.7	1.3	1.8	3.0
12.6	Taxes Licences, Fees	2.01	100.9	100.7	100.5	100.1	99.5	0.2	0.5	0.9	1.4
	All-Items Index	100.0	102.7	102.5	101.2	100.5	99.2	0.2	1.4	2.1	3.5

Consumer Price Index- May 2017

TABLE 3: COST-OF-LIVING INDEX BY TRADABILITY (September 2016 = 100.0)

	All Items		Non-Tradable		Domestic Tradable		Imported Tradable		All Tradable		
	Index	Inflation	Index	Inflation	Index	Inflation	Index	Inflation	Index	Inflation	
Weights	100.00		35.83		20.39		43.77		64.17		
2014	Jan	92.0	4.4	85.6	4.4	91.7	5.8	97.0	3.6	94.9	4.4
	Feb	92.4	4.6	85.7	4.5	92.8	6.9	97.1	3.5	95.4	4.8
	Mar	92.7	4.4	86.1	4.7	93.2	6.0	97.3	3.3	95.7	4.3
	Apr	93.5	4.5	87.7	5.7	93.7	5.1	97.6	3.4	96.1	4.1
	May	93.7	4.5	87.8	5.6	93.9	5.1	97.9	3.5	96.3	4.1
	Jun	94.0	4.6	88.3	5.8	94.0	5.4	98.1	3.4	96.5	4.1
	Jul	94.1	4.5	88.3	5.7	94.1	5.5	98.3	3.2	96.7	4.1
	Aug	94.3	4.6	88.5	5.8	94.2	5.4	98.7	3.4	97.0	4.1
	Sept	94.5	4.5	88.7	5.8	94.1	5.1	99.0	3.3	97.1	4.0
	Oct	94.6	4.3	88.7	5.5	94.2	5.0	99.2	3.3	97.3	3.9
	Nov	94.9	4.3	88.9	5.3	94.2	4.6	99.7	3.5	97.6	4.0
	Dec	94.6	3.8	89.2	5.4	94.2	4.3	98.9	2.4	97.1	3.1
2015	Jan	95.4	3.6	89.8	4.9	95.5	4.2	99.4	2.5	97.9	3.1
	Feb	95.0	2.8	90.0	5.1	96.0	3.4	98.0	0.9	97.2	1.9
	Mar	95.3	2.8	90.4	4.9	96.6	3.6	98.2	1.0	97.6	1.9
	Apr	96.4	3.1	93.0	6.1	96.9	3.5	98.5	0.9	97.9	1.9
	May	96.5	3.0	93.3	6.3	96.9	3.2	98.6	0.8	98.0	1.7
	Jun	96.9	3.1	94.3	6.9	96.9	3.0	98.7	0.6	98.0	1.5
	Jul	97.0	3.1	94.4	6.9	96.9	2.9	99.0	0.7	98.2	1.5
	Aug	97.2	3.0	94.5	6.8	97.0	2.9	99.3	0.6	98.4	1.4
	Sept	97.3	2.9	95.3	7.4	96.6	2.7	99.2	0.2	98.2	1.1
	Oct	97.6	3.1	95.4	7.5	97.3	3.3	99.3	0.2	98.3	1.1
	Nov	97.6	2.9	95.4	7.4	97.4	3.4	99.3	-0.4	98.6	1.0
	Dec	97.6	3.1	96.0	7.6	97.4	3.5	98.9	0.0	98.3	1.2
2016	Jan	97.9	2.7	96.3	7.3	98.0	2.6	99.1	-0.3	98.6	0.8
	Feb	97.9	3.0	96.4	7.0	98.4	2.5	98.8	0.7	98.6	1.4
	Mar	98.2	3.0	96.9	7.3	98.6	2.1	99.0	0.8	98.8	1.3
	Apr	99.1	2.8	98.7	6.1	99.1	2.3	99.4	0.9	99.3	1.4
	May	99.2	2.8	98.9	6.0	99.4	2.5	99.4	0.8	99.4	1.4
	Jun	99.4	2.7	99.4	5.4	99.3	2.5	99.6	0.9	99.5	1.5
	Jul	99.6	2.7	99.4	5.4	99.5	2.8	99.7	0.7	99.6	1.5
	Aug	99.7	2.6	99.5	5.3	99.9	3.0	99.9	0.6	99.9	1.5
	Sept	100.0	2.8	100.0	4.9	100.0	3.5	100.0	0.9	100.0	1.9
	Oct	100.2	2.7	100.1	4.9	100.3	3.1	100.2	0.9	100.2	1.9
	Nov	100.4	2.9	100.1	4.9	100.7	3.4	100.5	1.2	100.6	2.1
	Dec	100.5	3.0	100.1	4.3	100.9	3.6	100.6	1.8	100.7	2.5
2017	Jan	101.0	3.1	100.4	4.3	102.2	4.3	100.8	1.7	101.2	2.6
	Feb	101.2	3.4	100.5	4.3	102.7	4.3	101.1	2.4	101.6	3.1
	Mar	101.7	3.5	100.8	3.9	103.1	4.6	101.8	2.9	102.2	3.5
	Apr	102.5	3.4	102.4	3.8	103.4	4.3	102.1	2.7	102.5	3.3
	May	102.7	3.5	102.6	3.7	103.7	4.3	102.3	2.9	102.7	3.4
% Change on last month		0.2		0.1		0.2		0.2		0.2	

Consumer Price Index- May 2017

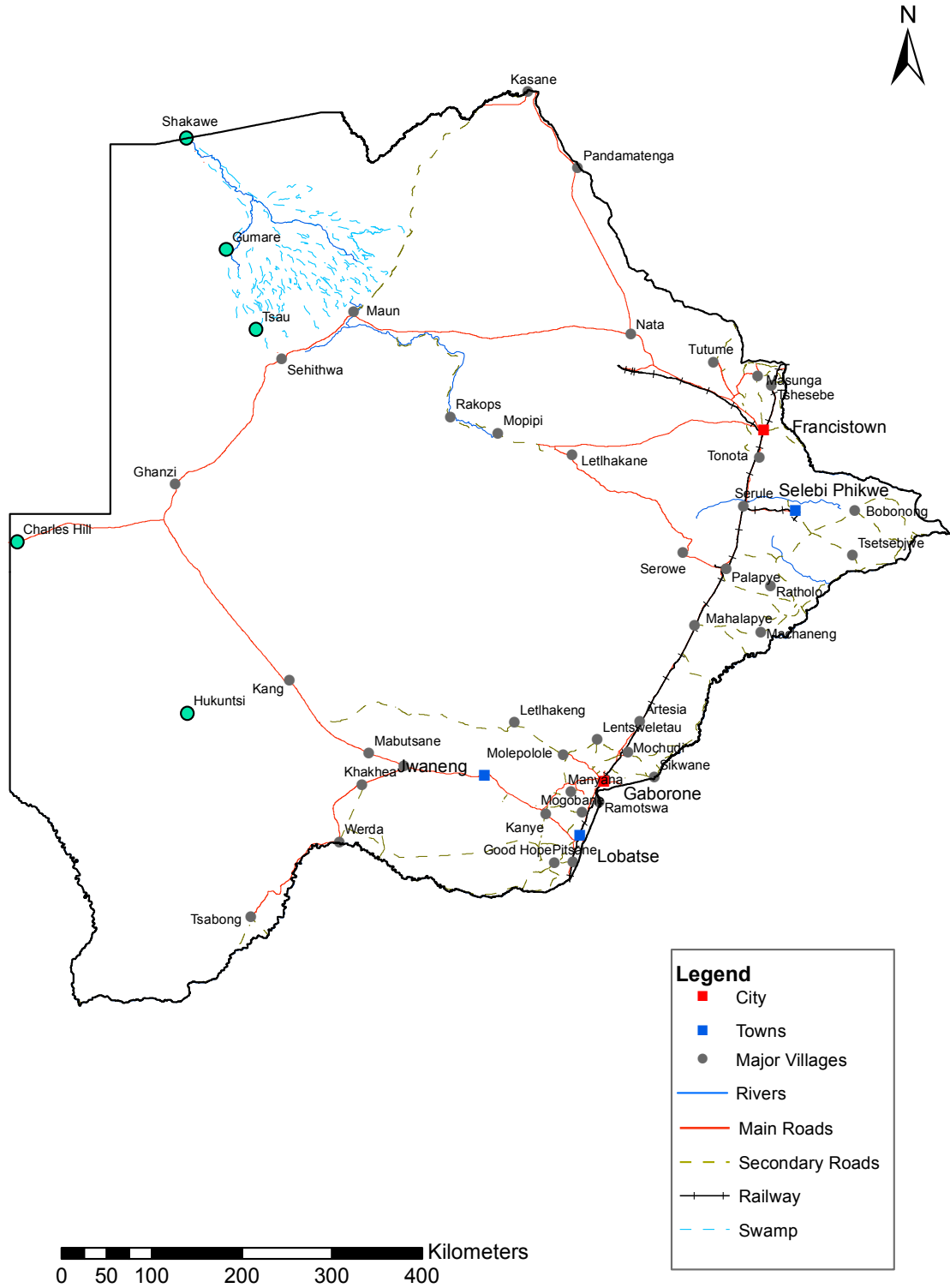
TABLE 4: Core Inflation Rates by Exclusion and Trimmed Mean

Year	Month	Consumer Price Index (Trimmed Mean) (September 2016 = 100)	Core Monthly Inflation Rate (Trimmed Mean) (percentage)	Consumer Price Index (Excluding Administered Prices) (September 2016 = 100)	Core Monthly Inflation (Excluding Administered Prices) (percentage)
2014					
	Jan	90.2	4.1	89.5	5.2
	Feb	90.0	4.1	90.0	5.5
	Mar	90.9	4.0	90.3	5.2
	Apr	90.8	4.1	90.9	5.2
	May	91.0	4.1	91.2	5.2
	Jun	92.2	4.2	91.5	5.3
	Jul	92.4	4.2	91.7	5.3
	Aug	92.2	4.2	92.0	5.3
	Sept	92.3	4.1	92.2	5.2
	Oct	92.9	4.0	92.3	5.1
	Nov	93.2	3.9	92.6	5.0
	Dec	91.6	3.7	92.9	4.9
2015					
	Jan	92.6	3.6		4.8
	Feb	92.7	3.2	94.3	4.8
	Mar	93.0	3.3	94.7	4.8
	Apr	95.5	3.6	95.3	4.8
	May	95.7	3.5	95.4	4.7
	Jun	96.1	3.6	95.8	4.7
	Jul	96.1	3.6	96.0	4.7
	Aug	96.4	3.5	96.2	4.6
	Sept	96.8	3.4	96.6	4.8
	Oct	97.1	3.6	96.9	5.0
	Nov	97.1	3.3	97.0	4.7
	Dec	97.0	3.2	97.1	4.5
2016					
	Jan	97.5	2.8	97.5	4.0
	Feb	97.7	2.6	97.8	3.7
	Mar	97.9	2.5	98.1	3.7
	Apr	98.5	2.4	98.9	3.9
	May	98.7	2.3	99.1	3.8
	Jun	98.7	2.4	99.3	3.6
	Jul	99.5	2.5	99.5	3.6
	Aug	99.7	2.4	99.7	3.6
	Sept	100.0	2.6	100.0	3.6
	Oct	100.2	2.2	100.2	3.4
	Nov	100.4	2.5	100.6	3.7
	Dec	100.5	2.5	100.7	3.7
2017					
	Jan	101.0	2.7	101.3	3.9
	Feb	101.1	2.9	101.6	3.9
	Mar	101.7	3.1	102.0	3.9
	Apr	102.0	3.1	102.2	3.3
	May	102.1	3.1	102.5	3.4

Table 5: Average Annual Inflation (September 2016=100)

	Group	Weights	2007	2008	2009	2010	2011	2012	2013	2014	2015	2016
1	Food & Non-Alcoholic Beverages	16.51	11.2	20.2	14.7	3.6	6.9	8.0	5.4	3.0	1.3	2.7
2	Alcoholic Beverages,Tobacco & Narcotics	7.83	10.1	13.2	35.2	7.1	8.4	7.6	10.3	9.0	6.1	2.5
3	Clothing and Footwear	6.27	1.6	2.0	8.4	8.0	8.9	7.5	6.3	6.0	7.6	6.5
4	Housing, Water, Electr. Gas & Other Fuels	14.90	4.7	8.1	4.8	6.4	8.4	7.7	4.3	3.9	7.1	6.3
5	Furnishing, H/H Equipment& Routine Maintenance	6.39	4.9	6.0	11.9	9.4	9.0	7.3	4.9	5.0	6.1	3.0
6	Health	3.62	12.5	11.3	5.5	2.7	4.5	5.9	5.5	8.3	6.3	3.0
7	Transport	20.65	7.9	21.2	(8.4)	12.1	13.2	10.8	7.3	1.2	(5.1)	(2.7)
8	Communication	4.27	(5.1)	(0.3)	(0.3)	1.2	(3.0)	(1.4)	0.3	0.3	0.3	0.2
9	Recreation & Culture	2.92	(1.8)	2.3	5.0	6.0	8.3	5.8	4.5	4.2	5.7	3.0
10	Education	3.34	6.0	3.9	3.9	5.8	10.6	6.4	4.7	7.4	6.4	3.7
11	Restaurants & Hotels	2.76	15.1	12.7	18.8	9.0	9.3	8.4	7.9	7.6	5.5	4.0
12	Miscellaneous Goods & Services	10.55	4.3	4.9	3.8	7.0	5.3	2.0	1.2	5.2	7.2	7.5
All-Items Index		100.0	7.1	12.6	8.2	6.9	8.5	7.5	5.9	4.4	3.1	2.8

CPI AREA COVERAGE



Compiled and Prepared by Statistics Botswana, 2016

GLOSSARY

Consumer Price Index (CPI) is an index which measures price changes in goods and services with reference to a base period.

Inflation is a measurement of prices movement of goods and services in a particular country.

Domestic Tradable refers to the goods and services which a country (Botswana) can export to other countries.

Imported Tradable represents the goods and services which a country (Botswana) imports from other countries (trading partners).

Non-Tradable refers to the goods and services which a country cannot either export or import to other countries.

All –Tradable refers to the total of **Domestic** and **Imported tradable**.

Trimmed Mean Core Inflation- attempts to remove 8 percent (by weight) of the commodity sub-groups with the largest price changes at each of the ends of an ordered series of price changes in any given month.

Core inflation by Exclusion is a measure used to remove the volatility inherent in prices that are only adjusted periodically and not always in response to currently prevailing market forces.