

STATISTICS BOTSWANA

Consumer Price Index

JULY 2018



Contact Statistician:
Phaladi Labobedi

Statistics Botswana, Private Bag 0024 Gaborone Botswana

Tel: (+267) 367 1300. **Toll Free:** 0800 600 200 **Fax:** (+267) 395 2201. **Email:** info@statsbots.org.bw **Website:** www.statsbots.org.bw

CONTENTS

COMMENTARY

Section 1: Headline Inflation

Section 2: Core Inflation

CHARTS

1. National Rates of Inflation, July 2015 – July 2018
2. Monthly Changes in the Consumer Price Index, July 2015 – July 2018
3. Non-Tradable Inflation Rates, July 2015 – July 2018
4. Tradable Inflation Rates, July 2015 – July 2018

TABLES

1. Consumer Price Index Series (January 2016 – July 2018)
2. National Consumer Price Group and Section Indices
3. Consumer Price Index by Tradability (January 2016 – July 2018)
4. Core Inflation Rates
5. Annual Average Inflation Rates 2007-2017

GLOSSARY

COMMENTARY

Section 1: Headline Inflation

The annual inflation rate in July 2018 was 3.1 percent, the same rate as in June 2018. The inflation rates for regions between June 2018 and July 2018 showed that Rural Villages declined to 2.1 percent from 2.3 percent, Cities & Towns went down to 3.9 percent from 4.0 percent while Urban Villages' remained unchanged at 2.7 percent between the two months.

The national Consumer Price Index moved from 106.1 in June 2018 to 106.2 in July 2018, registering an increase of 0.1 percent. The Cities & Towns' index realized a rise of 0.1 percent, moving from 106.8 to 106.9. The Rural Villages index' increased by 0.1 percent, advancing from 105.4 in June 2018 to 105.5 in July 2018, while Urban Villages' index rose by 0.1 percent between the two periods.

Group indices were generally moving at a steady pace between the two months under review, recording changes of less than 1.0 percent.

The Restaurants & Hotels group index went up from 106.6 to 107.0, recording a rise of 0.4 percent between the two months. The rise was attributed to the general increase in the section indices.

The Food & Non-Alcoholic Beverages group index moved from 102.6 to 102.4, recording a drop of 0.2 percent between the two months. The drop was mainly attributed to the decrease in the major section indices notably: Vegetables (0.8 percent) and Bread & Cereals (0.5 percent).

The Transport group index went up from 109.0 to 109.2, registering a rise of 0.2 percent between the two months. The rise was due to the increase in the section index of Purchase of Vehicles by 0.6 percent.

The *All-Tradable index* advanced from 105.3 in June to 105.4 in July, registering a rise of 0.1 percent. The *Imported Tradable index* recorded an increase of 0.1 percent between June and July 2018. The *Non-Tradable index* moved from 107.5 in June to 107.7 in July, registering an increase of 0.1 percent, while the *Domestic Tradable index* remained unchanged at 103.3 between June and July.

All-Tradable inflation rate was 2.3 percent in July, recording a drop of 0.1 of a percentage point on the June 2018 rate of 2.4 percent. The *Imported Tradable* inflation rate went down from 3.6 percent in June to 3.4 percent in July while the *Non-Tradable* inflation rate remained unchanged at 4.4 percent between the two months.

Section 2: Core Inflation

The Trimmed Mean Core Inflation rate in July 2018 was 3.1 percent, an increase of 0.1 of a percentage point on the June 2018 rate of 3.2 percent. The Core Inflation rate by exclusion was 1.7 percent compared to 1.8 percent realized the previous month.

CHARTS

Chart 1: National Inflation Rate 2015 - 2018

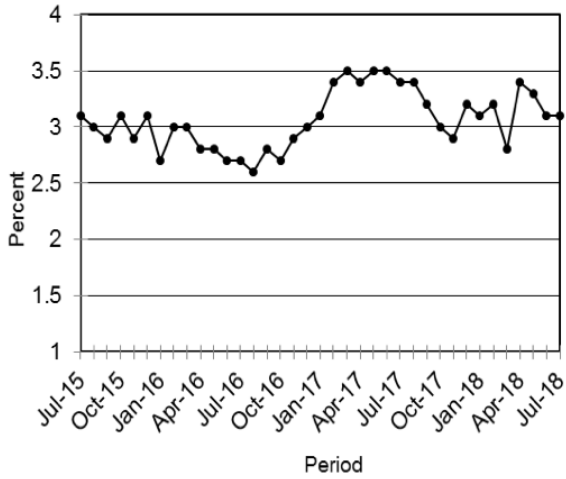


Chart 2: Monthly Changes in Consumer Price Index 2015 - 2018

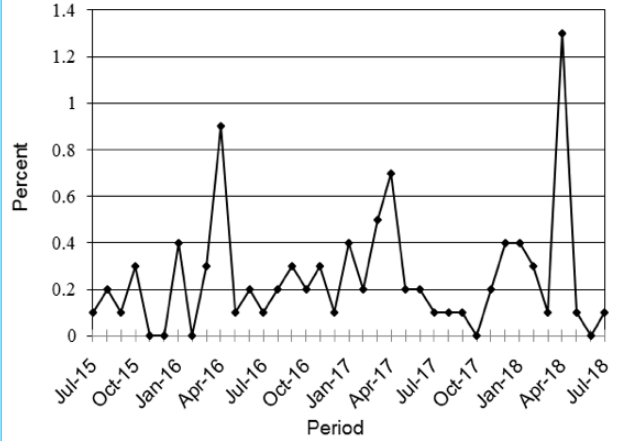


Chart 3: Non-Tradable Inflation 2015 - 2018

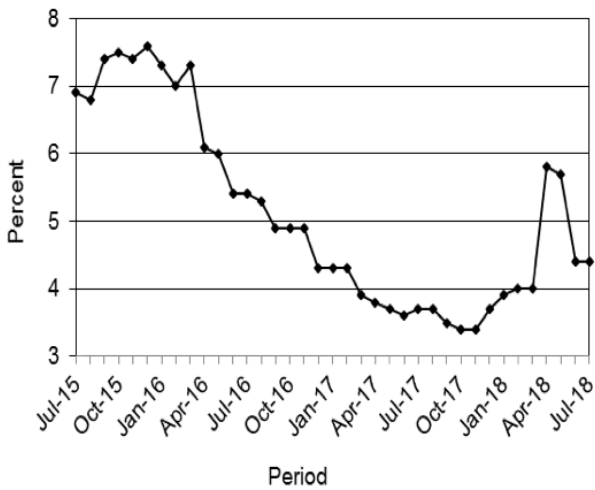
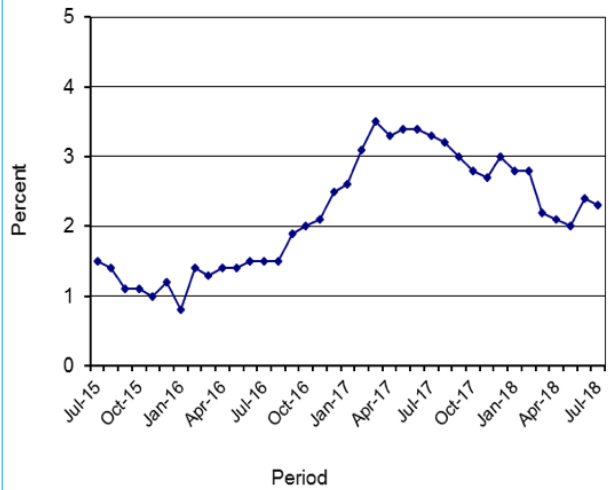


Chart 4: Tradable Inflation 2015 - 2018



B. Matlhaga
B. Matlhaga
 For Statistician General
 15th August 2018

TABLES

TABLE 1: CONSUMER PRICE INDEX (September 2016 =100.0)

		Food	Alcohol and Tobacco	Clothing and Footwear	Housing	Furniture etc	Health	Transport	Communication	Rec. & Culture	Education	Rest. & Hotels	Miscellaneous	
Weights		16.51	7.83	6.27	14.90	6.39	3.62	20.65	4.27	2.92	3.34	2.76	10.55	
2016	Jan	97.6	98.6	96.8	97.1	98.2	97.6	100.5	100.0	98.9	99.9	97.9	93.6	
	Feb	98.2	98.7	97.4	96.9	98.3	97.7	99.1	100.0	99.5	99.9	98.2	93.3	
	Mar	98.5	98.8	98.0	98.2	98.5	97.8	99.2	100.0	99.6	99.9	98.4	93.5	
	Apr	99.3	99.3	98.5	98.2	98.7	98.0	99.5	100.0	99.6	100.0	98.7	99.6	
	May	99.4	99.4	98.9	98.2	98.8	99.9	99.5	100.0	99.7	100.0	98.9	99.6	
	Jun	99.1	99.6	99.4	99.0	99.3	100.0	99.8	100.0	99.6	100.0	99.2	99.9	
	Jul	99.3	99.9	99.6	99.0	99.4	100.0	99.9	100.0	99.7	100.0	99.3	100.0	
	Aug	99.7	100.0	99.9	99.0	99.5	100.0	100.0	100.0	99.8	100.0	99.6	100.0	
	Sept	100.0	100.0	100.0	100.0	100.0	100.0	100.0	100.0	100.0	100.0	100.0	100.0	100.0
	Oct	100.4	100.7	100.2	100.0	100.2	100.0	100.0	100.0	100.0	100.2	100.0	100.2	100.4
	Nov	100.9	101.2	100.6	100.1	100.6	100.2	100.1	100.0	100.0	100.2	100.0	100.5	100.5
	Dec	101.0	101.3	100.7	100.2	100.8	100.3	100.2	100.0	100.0	100.3	100.0	100.6	100.5
2017	Jan	101.9	102.3	101.2	100.4	101.2	100.8	99.7	100.1	100.7	104.0	101.4	100.7	
	Feb	102.3	103.0	101.4	100.6	101.7	100.9	99.8	100.1	101.1	104.1	101.7	101.0	
	Mar	102.8	103.6	101.7	101.0	102.1	101.1	100.9	100.1	101.3	104.1	102.0	101.4	
	Apr	103.1	104.1	101.9	104.8	102.3	101.2	101.0	100.1	102.0	104.1	102.2	101.5	
	May	103.4	104.7	102.1	104.9	102.4	101.2	101.1	100.2	102.0	104.1	102.5	101.6	
	Jun	103.3	104.7	102.2	105.0	102.7	101.8	101.4	100.3	102.1	104.1	102.8	102.6	
	Jul	103.6	104.8	102.6	105.1	102.8	102.0	101.4	100.3	102.2	104.2	103.3	102.6	
	Aug	103.5	104.9	102.8	105.2	102.9	102.0	101.6	100.3	102.3	104.2	103.5	102.7	
	Sept	102.8	105.0	103.0	105.8	103.1	102.0	101.7	101.3	102.2	104.2	103.7	102.8	
	Oct	102.8	104.8	103.1	105.7	103.3	102.1	101.7	101.3	102.3	104.2	104.0	102.8	
	Nov	102.6	104.6	103.1	105.7	103.4	102.2	102.7	101.3	102.2	104.2	104.0	102.9	
	Dec	102.1	104.7	103.2	106.1	103.2	102.2	104.3	101.2	102.4	104.2	104.6	103.4	
2018	Jan	102.3	104.8	103.3	106.2	103.4	102.3	104.7	101.2	102.6	109.8	104.9	103.7	
	Feb	102.7	104.9	103.5	106.4	103.7	102.4	105.0	101.3	102.9	109.8	105.3	104.3	
	Mar	102.8	105.0	103.7	106.7	104.4	102.5	104.9	101.3	103.4	109.8	105.4	104.5	
	Apr	102.9	104.9	104.0	108.3	104.5	102.5	107.4	101.4	104.0	109.8	105.9	110.1	
	May	102.9	105.2	104.2	108.4	104.6	102.6	107.4	101.4	104.1	109.8	106.2	110.2	
	Jun	102.6	105.4	104.4	108.8	104.8	102.7	109.0	92.0	104.1	109.8	106.6	110.3	
	Jul	102.4	105.6	104.6	108.9	104.9	102.8	109.2	92.0	104.2	109.8	107.0	110.5	
% Change on														
Last month		(0.2)	0.2	0.2	0.0	0.1	0.1	0.2	0.0	0.2	0.0	0.4	0.2	

Consumer Price Index- July 2018

TABLE 1: CONSUMER PRICE INDEX (Cont.)

		All Items Index	National Inflation Rate	Monthly Change	Towns & Cities Index	Urban Village Index	Rural Villages Index	Annual Inflation		
								Towns & Cities	Urban Villages	Rural Villages
		100.0	%	%	41.8	34.5	23.7	%	%	%
2016	Jan	97.9	2.7	0.4	97.9	98.1	97.7	2.7	2.6	2.8
	Feb	97.9	3.0	(0.0)	97.7	98.2	97.9	2.9	3.2	3.1
	Mar	98.2	3.0	0.3	98.1	98.6	98.0	3.1	3.2	2.7
	Apr	99.1	2.8	0.9	99.0	99.4	98.7	2.6	3.2	2.7
	May	99.2	2.8	0.1	99.1	99.5	98.9	2.7	3.1	2.5
	Jun	99.4	2.7	0.2	99.4	99.7	99.1	2.5	2.8	2.6
	Jul	99.6	2.7	0.1	99.5	99.7	99.6	2.5	2.7	3.0
	Aug	99.7	2.6	0.2	99.6	99.9	99.8	2.6	2.6	2.9
	Sept	100.0	2.8	0.3	100.0	100.0	100.0	2.8	2.7	2.9
	Oct	100.2	2.7	0.2	100.2	100.2	100.2	2.5	2.7	3.1
	Nov	100.4	2.9	0.3	100.3	100.4	100.7	2.7	2.9	3.5
	Dec	100.5	3.0	0.1	100.5	100.4	100.8	2.8	3.0	3.5
2017	Jan	101.0	3.1	0.4	100.9	100.8	101.3	3.1	2.8	3.6
	Feb	101.2	3.4	0.2	101.1	101.1	101.6	3.5	2.9	3.8
	Mar	101.7	3.5	0.5	101.6	101.6	102.1	3.6	3.0	4.2
	Apr	102.5	3.4	0.7	102.3	102.4	102.8	3.3	3.0	4.2
	May	102.7	3.5	0.2	102.5	102.6	103.0	3.4	3.1	4.1
	Jun	102.9	3.5	0.2	102.8	102.9	103.0	3.4	3.3	3.9
	Jul	103.0	3.4	0.1	102.9	102.9	103.3	3.5	3.2	3.7
	Aug	103.1	3.4	0.1	103.0	103.0	103.4	3.4	3.2	3.6
	Sept	103.2	3.2	0.1	103.2	103.0	103.4	3.2	3.0	3.4
	Oct	103.2	3.0	0.0	103.2	102.9	103.5	3.0	2.7	3.3
	Nov	103.4	2.9	0.2	103.4	103.0	103.7	3.1	2.6	3.0
	Dec	103.7	3.2	0.4	104.0	103.3	103.9	3.6	2.9	3.1
2018	Jan	104.1	3.1	0.4	104.5	103.7	104.1	3.6	2.9	2.8
	Feb	104.4	3.2	0.3	104.7	104.1	104.4	3.6	2.9	2.7
	Mar	104.6	2.8	0.1	104.9	104.2	104.5	3.3	2.6	2.3
	Apr	106.0	3.4	1.3	106.6	105.6	105.5	4.2	3.1	2.7
	May	106.1	3.3	0.1	106.7	105.7	105.5	4.1	3.0	2.5
	Jun	106.1	3.1	0.0	106.8	105.7	105.4	4.0	2.7	2.3
	Jul	106.2	3.1	0.1	106.9	105.7	105.5	3.9	2.7	2.1
% Change on last month		0.1			0.1	0.1	0.1			

TABLE 2 : NATIONAL CONSUMER PRICE GROUP AND SECTION INDICES (SEPTEMBER 2016=100.0)

	Group Section	Weights	This month July 2018	Last month June 2018	3 months ago Apr 2018	6 months ago Jan 2018	12 months ago July 2017	Percentage Change on:			
								Last month	3 months ago	6 months ago	12 months ago
1	Food & Non-Alcoholic Beverages	16.51	102.4	102.6	102.9	102.3	103.6	(0.2)	(0.5)	0.1	(1.1)
1.1	Bread & Cereals	5.27	95.1	95.5	96.5	97.1	102.1	(0.5)	(1.5)	(2.1)	(6.9)
1.2	Meat (Fresh, Chilled & Frozen)	2.66	105.0	105.0	105.0	104.6	104.8	(0.0)	(0.0)	0.4	0.2
1.3	Fish (Fresh, Chilled & Frozen)	0.17	106.6	106.6	105.8	104.2	104.4	0.0	0.8	2.3	2.1
1.4	Milk, Cheese & Milk Products	1.49	102.4	102.1	101.7	100.8	99.8	0.4	0.7	1.7	2.6
1.5	Oils & Fats	0.70	100.4	100.3	100.4	100.3	102.5	0.1	(0.0)	0.1	(2.0)
1.6	Fruit	0.86	110.1	110.5	110.9	107.8	106.1	(0.3)	(0.7)	2.1	3.8
1.7	Vegetables	1.80	107.8	108.7	109.0	106.2	103.8	(0.8)	(1.1)	1.6	3.9
1.8	Sugar, Jam, Honey, Chocolate & Confectionery	1.29	109.6	109.5	110.8	110.7	110.3	0.1	(1.1)	(1.0)	(0.7)
1.9	Food not else where Classified	0.99	103.3	103.6	102.7	101.5	101.8	(0.3)	0.6	1.7	1.5
1.10	Coffee, Tea & Cocoa	0.36	116.2	116.0	115.4	113.9	110.3	0.2	0.7	2.0	5.4
1.11	Mineral Waters, Soft Drinks, Fruits & Veg. Juices	0.92	103.2	102.9	102.1	101.4	101.9	0.3	1.1	1.7	1.3
2	Alcoholic Beverages & Tobacco	7.83	105.6	105.4	104.9	104.8	104.8	0.2	0.7	0.8	0.8
2.1	Alcoholic Beverages	6.19	105.3	105.2	104.6	104.5	104.9	0.1	0.6	0.8	0.4
2.2	Tobacco	1.65	106.7	106.4	105.7	105.6	104.2	0.3	1.0	1.1	2.5
3	Clothing and Footwear	6.27	104.6	104.4	104.0	103.3	102.6	0.2	0.6	1.3	2.0
3.1	Clothing	2.42	103.8	103.8	103.6	102.5	102.0	0.0	0.2	1.3	1.8
3.2	Other articles of Clothing	1.01	105.0	104.6	104.5	103.2	102.0	0.3	0.5	1.7	2.9
3.3	Cleaning, Repair & Hire	0.99	107.5	106.6	105.6	105.3	104.5	0.8	1.8	2.1	2.9
3.4	Footwear	1.85	104.0	103.9	103.5	103.3	102.8	0.1	0.4	0.6	1.1
4	Housing, Water, Electr. Gas & Other Fuels	14.90	108.9	108.8	108.3	106.2	105.1	0.0	0.5	2.5	3.5
4.1	Rent paid by Tenants	6.25	104.1	104.1	103.1	102.7	101.0	0.0	0.9	1.4	3.1
4.2	Materials for Maintenance & Repair of dwellings	4.29	105.6	105.6	105.1	103.8	103.0	0.0	0.5	1.7	2.5
4.3	Water Supply & Misc. Services	1.50	125.4	125.4	125.4	125.4	125.4	0.0	0.0	0.0	0.0
4.4	Electricity Gas and other Fuels	2.86	115.5	115.5	115.2	107.6	106.9	0.0	0.3	7.4	8.1
5	Furnishing, H/H Equipment & Routine Maintenance	6.39	104.9	104.8	104.5	103.4	102.8	0.1	0.4	1.5	2.0
5.1	Furniture & Furnishing	1.65	105.0	104.7	104.3	103.6	102.3	0.3	0.6	1.3	2.6
5.2	Carpets & Other Floor Coverings	0.24	105.1	105.1	104.3	103.5	103.2	0.0	0.8	1.5	1.9
5.3	Household Textiles	0.41	104.3	104.2	103.9	103.4	102.1	0.1	0.4	0.9	2.1
5.4	Household Appliances	0.85	103.2	103.0	102.9	102.6	102.5	0.2	0.3	0.6	0.7
5.5	Glassware, Tableware & Household Utensils	0.40	101.2	101.1	100.6	100.5	101.1	0.1	0.6	0.7	0.0
5.6	Small Tools, Miscellaneous Accessories	0.06	103.7	103.7	103.2	102.3	101.7	0.0	0.5	1.4	2.0
5.7	Goods & Services for H/hold Maintenance	2.78	106.1	106.1	105.7	104.0	103.6	(0.1)	0.3	2.0	2.4

TABLE 2 : NATIONAL CONSUMER PRICE GROUP AND SECTION INDICES (SEPTEMBER 2016=100.0) Cont'd

	Group Section	Weights	This month July 2018	Last month June 2018	3 months ago Apr 2018	6 months ago Jan 2018	12 months ago July 2017	Percentage Change on:			
								Last month	3 months ago	6 months ago	12 months ago
6	Health	3.62	102.8	102.7	102.5	102.3	102.0	0.1	0.3	0.5	0.8
6.1	Medical Products, App. & Equip.	0.81	107.7	107.2	106.6	105.7	105.0	0.4	1.0	1.9	2.6
6.2	Out-patient Services	0.70	102.5	102.5	102.5	102.4	101.5	0.0	0.1	0.1	1.0
6.3	Hospital Services	2.10	101.0	101.0	101.0	101.0	101.0	0.0	0.0	0.0	0.0
7	Transport	20.65	109.2	109.0	107.4	104.7	101.4	0.2	1.7	4.3	7.7
7.1	Purchase of Vehicles	5.29	104.0	103.4	103.3	102.3	99.4	0.6	0.7	1.7	4.6
7.2	Operation of Personal Transport	11.13	110.6	110.6	107.6	107.4	102.6	0.1	2.8	3.0	7.8
7.3	Transport Services	4.22	111.9	111.9	111.9	100.5	100.5	0.0	0.0	11.3	11.3
8	Communication	4.27	92.0	92.0	101.4	101.2	100.3	0.0	(9.2)	(9.1)	(8.2)
8.1	Postal Services	0.15	126.5	126.5	126.5	126.5	100.0	0.0	0.0	0.0	26.5
8.2	Telephone & Telefax Equipment	0.71	102.6	102.6	102.6	102.0	101.6	0.0	0.0	0.6	1.0
8.3	Telephone & Telefax Services	3.41	88.4	88.3	100.0	100.0	100.0	0.0	(11.7)	(11.7)	(11.7)
9	Recreation & Culture	2.92	104.2	104.1	104.0	102.6	102.2	0.2	0.2	1.6	2.0
9.1	Audio Visual, Photographic & Info. Proce. Equip.	1.96	103.9	103.8	103.8	102.4	102.0	0.2	0.1	1.5	1.8
9.2	Other Recreational Items & Equip.	0.46	102.3	102.0	101.7	101.6	100.8	0.3	0.6	0.7	1.5
9.3	Recreational & Cultural Services	0.37	107.7	107.7	107.4	104.9	104.8	0.0	0.3	2.7	2.8
9.4	Newspapers, Books & Stationary	0.13	106.0	105.9	105.5	104.1	102.7	0.1	0.5	1.8	3.2
10	Education	3.34	109.8	109.8	109.8	109.8	104.2	0.0	0.0	0.0	5.4
10.1	Pre-Primary & Primary Education	0.80	121.8	121.8	121.8	121.8	105.3	0.0	0.0	0.0	15.7
10.2	Secondary & Tertiary Education	2.54	106.1	106.0	106.0	106.0	103.8	0.0	0.0	0.0	2.2
11	Restaurants & Hotels	2.76	107.0	106.6	105.9	104.9	103.3	0.4	1.1	2.1	3.6
11.1	Restaurants, Cafes and the Like	2.31	107.1	106.6	106.1	105.2	103.5	0.5	1.0	1.9	3.5
11.2	Accommodation Services	0.45	106.6	106.3	104.7	103.2	102.3	0.3	1.8	3.3	4.2
12	Miscellaneous Goods & Services	10.55	110.5	110.3	110.1	103.7	102.6	0.2	0.3	6.5	7.6
12.1	Personal Care	1.71	105.6	105.5	104.9	103.6	103.8	0.1	0.7	2.0	1.8
12.2	Personal Effects N.E.C.	1.24	104.6	104.3	104.3	103.6	103.1	0.3	0.3	1.0	1.5
12.3	Social Protection	0.07	120.9	120.9	120.9	120.9	102.0	0.0	0.0	0.0	18.6
12.4	Insurance	4.73	116.2	115.9	115.9	102.8	101.0	0.2	0.2	13.0	15.0
12.5	Financial Services	0.79	105.9	105.9	104.5	103.7	103.0	0.0	1.3	2.1	2.9
12.6	Taxes Licences, Fees	2.01	106.2	106.2	106.4	105.4	105.1	0.0	(0.1)	0.8	1.0
	All-Items Index	100.0	106.2	106.1	106.0	104.1	103.0	0.1	0.2	1.9	3.1

Consumer Price Index- July 2018

TABLE 3: CONSUMER PRICE INDEX BY TRADABILITY (September 2016 = 100.0)

	All Items		Non-Tradable		Domestic Tradable		Imported Tradable		All Tradable		
	Index	Inflation	Index	Inflation	Index	Inflation	Index	Inflation	Index	Inflation	
Weights	100.00		35.83		20.39		43.77		64.17		
2016	Jan	97.9	2.7	96.3	7.3	98.0	2.6	99.1	-0.3	98.6	0.8
	Feb	97.9	3.0	96.4	7.0	98.4	2.5	98.8	0.7	98.6	1.4
	Mar	98.2	3.0	96.9	7.3	98.6	2.1	99.0	0.8	98.8	1.3
	Apr	99.1	2.8	98.7	6.1	99.1	2.3	99.4	0.9	99.3	1.4
	May	99.2	2.8	98.9	6.0	99.4	2.5	99.4	0.8	99.4	1.4
	Jun	99.4	2.7	99.4	5.4	99.3	2.5	99.6	0.9	99.5	1.5
	Jul	99.6	2.7	99.4	5.4	99.5	2.8	99.7	0.7	99.6	1.5
	Aug	99.7	2.6	99.5	5.3	99.9	3.0	99.9	0.6	99.9	1.5
	Sept	100.0	2.8	100.0	4.9	100.0	3.5	100.0	0.9	100.0	1.9
	Oct	100.2	2.7	100.1	4.9	100.3	3.1	100.2	0.9	100.2	1.9
	Nov	100.4	2.9	100.1	4.9	100.7	3.4	100.5	1.2	100.6	2.1
	Dec	100.5	3.0	100.1	4.3	100.9	3.6	100.6	1.8	100.7	2.5
2017	Jan	101.0	3.1	100.4	4.3	102.2	4.3	100.8	1.7	101.2	2.6
	Feb	101.2	3.4	100.5	4.3	102.7	4.3	101.1	2.4	101.6	3.1
	Mar	101.7	3.5	100.8	3.9	103.1	4.6	101.8	2.9	102.2	3.5
	Apr	102.5	3.4	102.4	3.8	103.4	4.3	102.1	2.7	102.5	3.3
	May	102.7	3.5	102.6	3.7	103.7	4.3	102.3	2.9	102.7	3.4
	Jun	102.9	3.5	103.0	3.6	103.5	4.2	102.5	2.9	102.8	3.4
	Jul	103.0	3.4	103.1	3.7	103.4	3.8	102.7	3.0	103.0	3.3
	Aug	103.1	3.4	103.1	3.7	103.2	3.4	103.0	3.1	103.1	3.2
	Sept	103.2	3.2	103.5	3.5	102.6	2.6	103.1	3.1	103.0	3.0
	Oct	103.2	3.0	103.5	3.4	102.5	2.2	103.2	3.0	103.0	2.8
	Nov	103.4	2.9	103.5	3.4	102.3	1.6	103.6	3.1	103.3	2.7
	Dec	103.7	3.2	103.9	3.7	102.3	1.3	104.3	3.7	103.7	3.0
2018	Jan	104.1	3.1	104.4	3.9	102.7	0.5	104.6	3.8	104.0	2.8
	Feb	104.4	3.2	104.5	4.0	103.0	0.3	105.0	3.8	104.4	2.8
	Mar	104.6	2.8	104.8	4.0	103.2	0.1	105.0	3.1	104.5	2.2
	Apr	106.0	3.4	108.4	5.8	103.3	-0.1	105.2	3.1	104.7	2.1
	May	106.1	3.3	108.4	5.7	103.4	-0.2	105.3	3.0	104.8	2.0
	Jun	106.1	3.1	107.5	4.4	103.3	-0.2	106.2	3.6	105.3	2.4
	Jul	106.2	3.1	107.7	4.4	103.3	-0.1	106.2	3.4	105.4	2.3
% Change on last month		0.1		0.1		0.0		0.1		0.1	

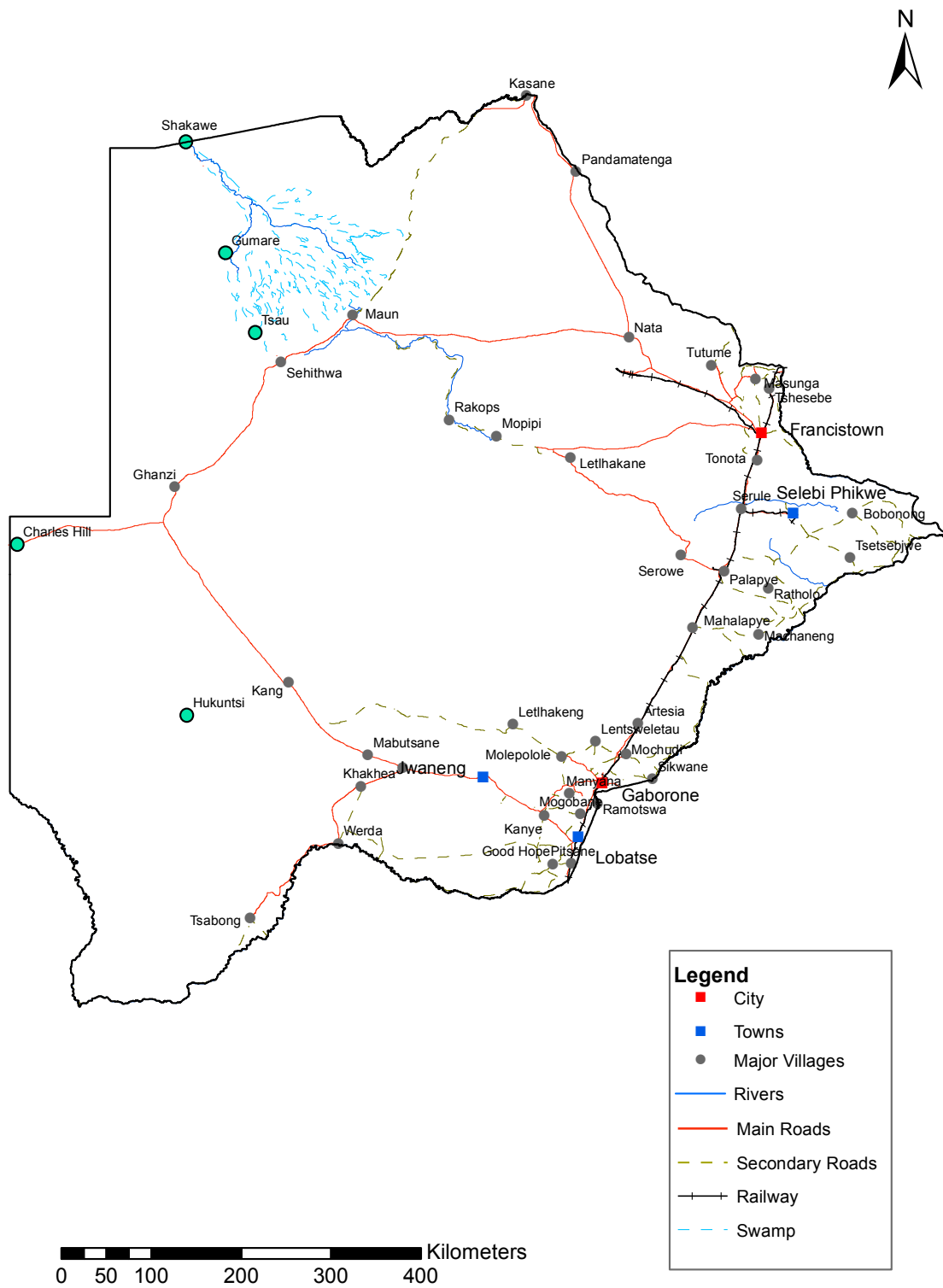
TABLE 4: Core Inflation Rates by Exclusion and Trimmed Mean

Year	Month	Consumer Price Index (Trimmed Mean) (September 2016 = 100)	Core Monthly Inflation Rate (Trimmed Mean) (percentage)	Consumer Price Index (Excluding Administered Prices) (September 2016 = 100)	Core Monthly Inflation (Excluding Administered Prices) (percentage)
2016					
	Jan	97.5	2.8	97.5	4.0
	Feb	97.7	2.6	97.8	3.7
	Mar	97.9	2.5	98.1	3.7
	Apr	98.5	2.4	98.9	3.9
	May	98.7	2.3	99.1	3.8
	Jun	98.7	2.4	99.3	3.6
	Jul	99.5	2.5	99.5	3.6
	Aug	99.7	2.4	99.7	3.6
	Sept	100.0	2.6	100.0	3.6
	Oct	100.2	2.2	100.2	3.4
	Nov	100.4	2.5	100.6	3.7
	Dec	100.5	2.5	100.7	3.7
2017					
	Jan	101.0	2.7	101.3	3.9
	Feb	101.1	2.9	101.6	3.9
	Mar	101.7	3.1	102.0	3.9
	Apr	102.0	3.1	102.2	3.3
	May	102.1	3.1	102.5	3.4
	Jun	102.4	2.9	102.6	3.3
	Jul	102.5	2.9	102.8	3.3
	Aug	102.6	2.9	102.9	3.3
	Sept	102.7	2.7	103.0	3.0
	Oct	102.7	2.6	103.0	2.8
	Nov	103.0	2.5	103.0	2.4
	Dec	103.5	2.9	103.0	2.3
2018					
	Jan	103.8	2.8	103.5	2.2
	Feb	104.1	2.9	103.8	2.2
	Mar	104.4	2.6	104.0	2.0
	Apr	105.4	3.1	104.2	1.9
	May	105.5	3.0	104.3	1.8
	Jun	106.5	3.2	104.5	1.8
	Jul	106.6	3.1	104.6	1.7

TABLE 5: Average Annual Inflation (September 2016 = 100.0)

	Group	Weights	YEAR										
			2007	2008	2009	2010	2011	2012	2013	2014	2015	2016	2017
1	Food & Non-Alcoholic Beverages	16.51	11.2	20.2	14.7	3.6	6.9	8.0	5.4	3.0	1.3	2.7	3.4
2	Alcoholic Beverages, Tobacco & Narcotics	7.83	10.1	13.2	35.2	7.1	8.4	7.6	10.3	9.0	6.1	2.5	4.5
3	Clothing and Footwear	6.27	1.6	2.0	8.4	8.0	8.9	7.5	6.3	6.0	7.6	6.5	3.2
4	Housing, Water, Electr. Gas & Other Fuels	14.90	4.7	8.1	4.8	6.4	8.4	7.7	4.3	3.9	7.1	6.3	5.4
5	Furnishing, H/H Equipment & Routine Maintenance	6.39	4.9	6.0	11.9	9.4	9.0	7.3	4.9	5.0	6.1	3.0	3.3
6	Health	3.62	12.5	11.3	5.5	2.7	4.5	5.9	5.5	8.3	6.3	3.0	2.4
7	Transport	20.65	7.9	21.2	(8.4)	12.1	13.2	10.8	7.3	1.2	(5.1)	(2.7)	1.6
8	Communication	4.27	(5.1)	(0.3)	(0.3)	1.2	(3.0)	(1.4)	0.3	0.3	0.3	0.2	0.5
9	Recreation & Culture	2.92	(1.8)	2.3	5.0	6.0	8.3	5.8	4.5	4.2	5.7	3.0	2.2
10	Education	3.34	6.0	3.9	3.9	5.8	10.6	6.4	4.7	7.4	6.4	3.7	4.1
11	Restaurants & Hotels	2.76	15.1	12.7	18.8	9.0	9.3	8.4	7.9	7.6	5.5	4.0	3.7
12	Miscellaneous Goods & Services	10.55	4.3	4.9	3.8	7.0	5.3	2.0	1.2	5.2	7.2	7.5	3.9
All-Items Index		100.0	7.1	12.6	8.2	6.9	8.5	7.5	5.9	4.4	3.1	2.8	3.3

CPI AREA COVERAGE



Compiled and Prepared by Statistics Botswana, 2016

GLOSSARY

Consumer Price Index (CPI) is an index which measures price changes in goods and services with reference to a base period.

Inflation is a measurement of prices movement of goods and services in a particular country.

Domestic Tradable refers to the goods and services which a country (Botswana) can export to other countries.

Imported Tradable represents the goods and services which a country (Botswana) imports from other countries (trading partners).

Non-Tradable refers to the goods and services which a country cannot either export or import to other countries.

All –Tradable refers to the total of **Domestic** and **Imported tradable**.

Trimmed Mean Core Inflation- attempts to remove 8 percent (by weight) of the commodity sub-groups with the largest price changes at each of the ends of an ordered series of price changes in any given month.

Core inflation by Exclusion is a measure used to remove the volatility inherent in prices that are only adjusted periodically and not always in response to currently prevailing market forces.