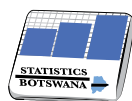




Consumer Price Index

December 2018



STATISTICS BOTSWANA

Contact Statistician:

Phaladi Labobedi

Statistics Botswana, Private Bag 0024 Gaborone Botswana

Tel: (+267) 367 1300. **Toll Free:** 0800 600 200 **Fax:** (+267) 395 2201. **Email:** info@statsbots.org.bw **Website:** www.statsbots.org.bw

CONTENTS

SECTION 1: Headline Inflation.....	3
SECTION 2: Core Inflation.....	3
GLOSSARY	13

CHARTS

CHART 1: National Rates Of Inflation.....	4
CHART 2: Monthly Changes In the Consumer Price Index.....	4
CHART 3: Non-Tradeables Inflation Rates.....	4
CHART 4: Tradeables Inflation Rates.....	4

TABLES

TABLE 1: Consumer Price Index (September 2016 =100.0).....	5
TABLE 2: National Consumer Price Group & Section Indices (September 2016 = 100.0).....	7
TABLE 3: Consumer Price Index by Tradeability (September 2016 = 100.0).....	9
TABLE 4: Core Inflation Rates by Exclusion and Trimmed Mean.....	10
TABLE 5: Average Annual Inflation (September 2016 = 100.0).....	11

COMMENTARY

Section 1: Headline Inflation

The annual inflation rate in December 2018 was 3.5 percent, registering a drop of 0.3 of a percentage point on the November 2018 rate of 3.8 percent. The inflation rates for regions between November 2018 and December 2018 indicated that Cities & Towns declined to 4.2 percent from 4.7 percent, Urban Villages went down to 3.5 percent from 3.6 percent and Rural Villages also dropped to 2.5 percent from 2.6 percent.

The national Consumer Price Index moved to 107.4 in December 2018, registering an increase of 0.1 percent. The Urban Villages' Index advanced from 106.7 to 106.9 recording a rise of 0.2 percent. The Cities & Towns' Index realised a rise of 0.1 percent moving from 108.3 in November to 108.4 in December, while the Rural Villages' Index remained unchanged at 106.4 over the two periods.

Group indices were generally moving at a steady pace between November 2018 and December 2018, recording changes of less than 1.0 percent.

The Restaurants & Hotels group Index showed an increase of 0.3 percent, from 107.4 in November to 107.7 in December. The rise was mainly due to the increase in the section index of Restaurants, Cafes & the like by 0.3 percent.

The Transport group index registered a rise of 0.2 percent, from 114.6 in November to 114.8 in December. This was attributed to an increase in the constituent section index of Purchase of Vehicles (1.0 percent).

The Alcoholic Beverages & Tobacco group Index moved from 105.9 in November to 105.7 in December, recording a decrease of 0.2 percent. The drop was attributed to the general decrease in the section indices.

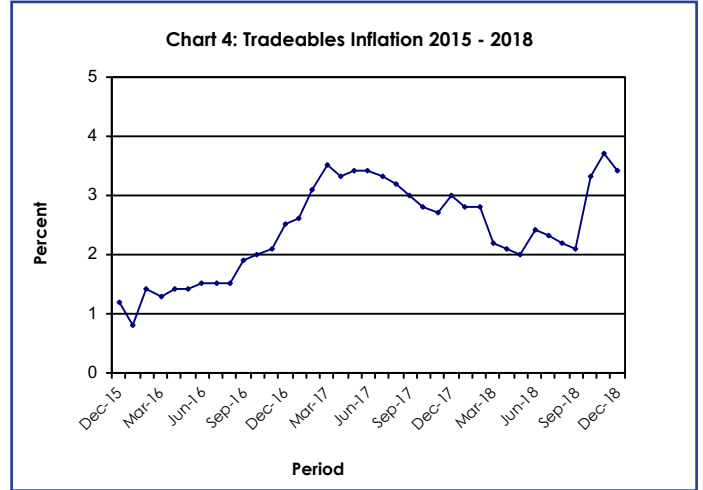
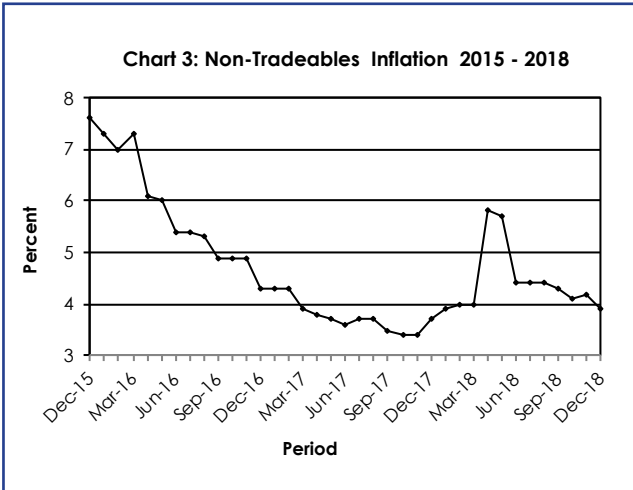
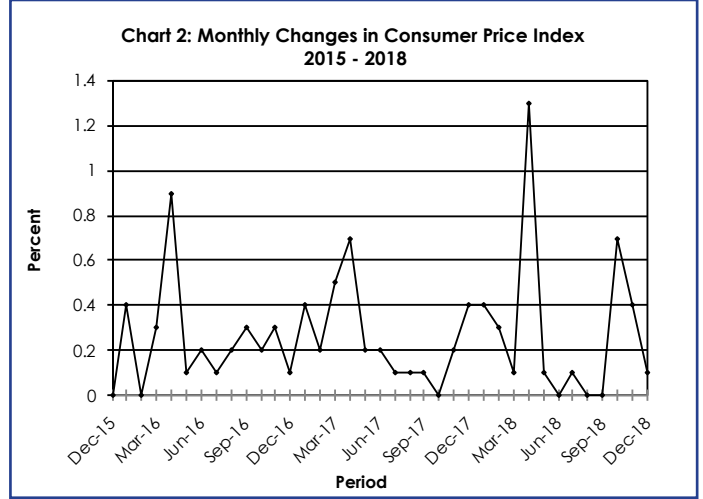
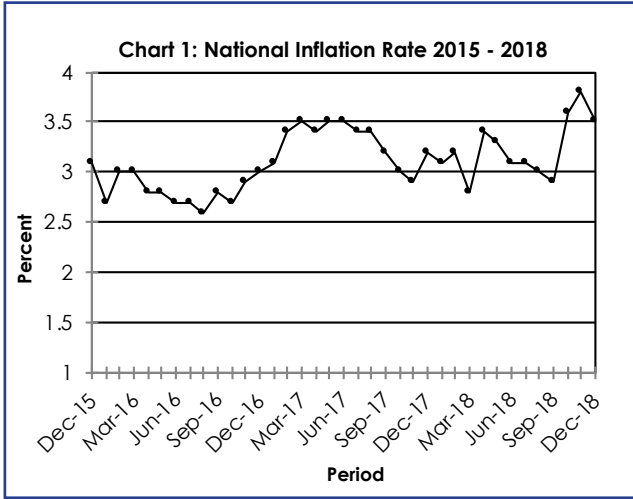
The All-Tradeables index advanced from 107.1 in November to 107.2 in December, registering an increase of 0.1 percent. The Imported Tradeables Index recorded an increase of 0.1 percent, moving from 108.7 in November to 108.8 in December 2018. The Domestic Tradeables Index realised an increase of 0.1 percent over the two months. The Non-Tradeables Index recorded an increase of 0.1 percent, moving from 107.8 in November to 107.9 in December 2018.

All-Tradeables inflation rate was 3.4 percent in December, recording a decrease of 0.3 of a percentage point on the November 2018 rate of 3.7 percent. The Imported Tradeables inflation rate went down from 4.9 percent in November to 4.4 percent in December, The Non-Tradeables inflation rate went down from 4.2 percent in November to 3.9 percent in December, while the Domestic Tradeables inflation rate rose by 0.1 of a percentage point, during the period under review.

Section 2: Core Inflation

The Trimmed Mean Core Inflation rate in December 2018 was 3.6 percent, a drop of 0.2 of a percentage point on the November 2018 rate of 3.8 percent. The Core Inflation rate by exclusion registered a rise of 0.1 of a percentage point, advancing from 1.7 percent in November 2018 to 1.8 percent during the period under review.

CHARTS



Dr. Burton S. Mguni
Statistician General
 15th January 2019

TABLES

TABLE 1: COST OF LIVING INDEX (September 2016 =100.0)

		Food	Alcohol and Tobacco	Clothing and Footwear	Housing	Furniture etc	Health	Transport	Communication	Rec. & Culture	Education	Rest. & Hotels	Miscellaneous	
Weights		16.51	7.83	6.27	14.90	6.39	3.62	20.65	4.27	2.92	3.34	2.76	10.55	
2016	Jan	97.6	98.6	96.8	97.1	98.2	97.6	100.5	100.0	98.9	99.9	97.9	93.6	
	Feb	98.2	98.7	97.4	96.9	98.3	97.7	99.1	100.0	99.5	99.9	98.2	93.3	
	Mar	98.5	98.8	98.0	98.2	98.5	97.8	99.2	100.0	99.6	99.9	98.4	93.5	
	Apr	99.3	99.3	98.5	98.2	98.7	98.0	99.5	100.0	99.6	100.0	98.7	99.6	
	May	99.4	99.4	98.9	98.2	98.8	99.9	99.5	100.0	99.7	100.0	98.9	99.6	
	Jun	99.1	99.6	99.4	99.0	99.3	100.0	99.8	100.0	99.6	100.0	99.2	99.9	
	Jul	99.3	99.9	99.6	99.0	99.4	100.0	99.9	100.0	99.7	100.0	99.3	100.0	
	Aug	99.7	100.0	99.9	99.0	99.5	100.0	100.0	100.0	99.8	100.0	99.6	100.0	
	Sept	100.0	100.0	100.0	100.0	100.0	100.0	100.0	100.0	100.0	100.0	100.0	100.0	
	Oct	100.4	100.7	100.2	100.0	100.2	100.0	100.0	100.0	100.0	100.2	100.0	100.2	100.4
	Nov	100.9	101.2	100.6	100.1	100.6	100.2	100.1	100.0	100.0	100.2	100.0	100.5	100.5
	Dec	101.0	101.3	100.7	100.2	100.8	100.3	100.2	100.0	100.3	100.0	100.6	100.5	100.5
2017	Jan	101.9	102.3	101.2	100.4	101.2	100.8	99.7	100.1	100.7	104.0	101.4	100.7	
	Feb	102.3	103.0	101.4	100.6	101.7	100.9	99.8	100.1	101.1	104.1	101.7	101.0	
	Mar	102.8	103.6	101.7	101.0	102.1	101.1	100.9	100.1	101.3	104.1	102.0	101.4	
	Apr	103.1	104.1	101.9	104.8	102.3	101.2	101.0	100.1	102.0	104.1	102.2	101.5	
	May	103.4	104.7	102.1	104.9	102.4	101.2	101.1	100.2	102.0	104.1	102.5	101.6	
	Jun	103.3	104.7	102.2	105.0	102.7	101.8	101.4	100.3	102.1	104.1	102.8	102.6	
	Jul	103.6	104.8	102.6	105.1	102.8	102.0	101.4	100.3	102.2	104.2	103.3	102.6	
	Aug	103.5	104.9	102.8	105.2	102.9	102.0	101.6	100.3	102.3	104.2	103.5	102.7	
	Sept	102.8	105.0	103.0	105.8	103.1	102.0	101.7	101.3	102.2	104.2	103.7	102.8	
	Oct	102.8	104.8	103.1	105.7	103.3	102.1	101.7	101.3	102.3	104.2	104.0	102.8	
	Nov	102.6	104.6	103.1	105.7	103.4	102.2	102.7	101.3	102.2	104.2	104.0	102.9	
	Dec	102.1	104.7	103.2	106.1	103.2	102.2	104.3	101.2	102.4	104.2	104.6	103.4	
2018	Jan	102.3	104.8	103.3	106.2	103.4	102.3	104.7	101.2	102.6	109.8	104.9	103.7	
	Feb	102.7	104.9	103.5	106.4	103.7	102.4	105.0	101.3	102.9	109.8	105.3	104.3	
	Mar	102.8	105.0	103.7	106.7	104.4	102.5	104.9	101.3	103.4	109.8	105.4	104.5	
	Apr	102.9	104.9	104.0	108.3	104.5	102.5	107.4	101.4	104.0	109.8	105.9	110.1	
	May	102.9	105.2	104.2	108.4	104.6	102.6	107.4	101.4	104.1	109.8	106.2	110.2	
	Jun	102.6	105.4	104.4	108.8	104.8	102.7	109.0	92.0	104.1	109.8	106.6	110.3	
	Jul	102.4	105.6	104.6	108.9	104.9	102.8	109.2	92.0	104.2	109.8	107.0	110.5	
	Aug	102.1	105.8	104.6	109.0	104.9	102.8	109.2	92.0	104.2	109.8	107.2	110.4	
	Sept	101.8	105.9	104.6	109.4	105.4	103.0	109.1	92.1	104.2	109.8	107.3	110.3	
	Oct	101.7	105.9	104.5	109.4	105.4	103.1	112.9	92.1	103.8	109.8	107.3	109.8	
	Nov	101.8	105.9	104.6	109.6	105.5	103.2	114.6	92.1	103.9	109.8	107.4	109.9	
	Dec	101.9	105.7	104.8	109.8	105.4	103.3	114.8	91.9	104.0	109.8	107.7	110.1	
% Change on														
Last month		0.1	(0.2)	0.2	0.1	(0.1)	0.1	0.2	(0.2)	0.1	0.0	0.3	0.2	

Consumer Price Index-December 2018

TABLE 1: COST OF LIVING INDEX (Cont.)

		All Items Index	National Inflation Rate	Monthly Change	Towns & Cities Index	Urban Village Index	Rural Villages Index	Annual Inflation		
								Towns & Cities	Urban Villages	Rural
		100.0	%	%	41.8	34.5	23.7	%	%	%
2016	Jan	97.9	2.7	0.4	97.9	98.1	97.7	2.7	2.6	2.8
	Feb	97.9	3.0	(0.0)	97.7	98.2	97.9	2.9	3.2	3.1
	Mar	98.2	3.0	0.3	98.1	98.6	98.0	3.1	3.2	2.7
	Apr	99.1	2.8	0.9	99.0	99.4	98.7	2.6	3.2	2.7
	May	99.2	2.8	0.1	99.1	99.5	98.9	2.7	3.1	2.5
	Jun	99.4	2.7	0.2	99.4	99.7	99.1	2.5	2.8	2.6
	Jul	99.6	2.7	0.1	99.5	99.7	99.6	2.5	2.7	3.0
	Aug	99.7	2.6	0.2	99.6	99.9	99.8	2.6	2.6	2.9
	Sept	100.0	2.8	0.3	100.0	100.0	100.0	2.8	2.7	2.9
	Oct	100.2	2.7	0.2	100.2	100.2	100.2	2.5	2.7	3.1
	Nov	100.4	2.9	0.3	100.3	100.4	100.7	2.7	2.9	3.5
	Dec	100.5	3.0	0.1	100.5	100.4	100.8	2.8	3.0	3.5
2017	Jan	101.0	3.1	0.4	100.9	100.8	101.3	3.1	2.8	3.6
	Feb	101.2	3.4	0.2	101.1	101.1	101.6	3.5	2.9	3.8
	Mar	101.7	3.5	0.5	101.6	101.6	102.1	3.6	3.0	4.2
	Apr	102.5	3.4	0.7	102.3	102.4	102.8	3.3	3.0	4.2
	May	102.7	3.5	0.2	102.5	102.6	103.0	3.4	3.1	4.1
	Jun	102.9	3.5	0.2	102.8	102.9	103.0	3.4	3.3	3.9
	Jul	103.0	3.4	0.1	102.9	102.9	103.3	3.5	3.2	3.7
	Aug	103.1	3.4	0.1	103.0	103.0	103.4	3.4	3.2	3.6
	Sept	103.2	3.2	0.1	103.2	103.0	103.4	3.2	3.0	3.4
	Oct	103.2	3.0	0.0	103.2	102.9	103.5	3.0	2.7	3.3
	Nov	103.4	2.9	0.2	103.4	103.0	103.7	3.1	2.6	3.0
	Dec	103.7	3.2	0.4	104.0	103.3	103.9	3.6	2.9	3.1
2018	Jan	104.1	3.1	0.4	104.5	103.7	104.1	3.6	2.9	2.8
	Feb	104.4	3.2	0.3	104.7	104.1	104.4	3.6	2.9	2.7
	Mar	104.6	2.8	0.1	104.9	104.2	104.5	3.3	2.6	2.3
	Apr	106.0	3.4	1.3	106.6	105.6	105.5	4.2	3.1	2.7
	May	106.1	3.3	0.1	106.7	105.7	105.5	4.1	3.0	2.5
	Jun	106.1	3.1	0.0	106.8	105.7	105.4	4.0	2.7	2.3
	Jul	106.2	3.1	0.1	106.9	105.7	105.5	3.9	2.7	2.1
	Aug	106.2	3.0	(0.0)	106.9	105.7	105.5	3.8	2.6	2.0
	Sept	106.2	2.9	0.0	106.9	105.8	105.5	3.6	2.7	2.0
	Oct	106.9	3.6	0.7	107.8	106.4	106.1	4.4	3.4	2.5
	Nov	107.3	3.8	0.4	108.3	106.7	106.4	4.7	3.6	2.6
	Dec	107.4	3.5	0.1	108.4	106.9	106.4	4.2	3.5	2.5
% Change on last month				0.1	0.2	0.0	0.1			

TABLE 2: NATIONAL CONSUMER PRICE GROUP & SECTION INDICES (SEPTEMBER 2016 = 100.0)

	Group Section	Weights	This month Dec 2018	Last month Nov 2018	3 months ago Sep 2018	6 months ago Jun 2018	12 months ago Dec 2017	Percentage Change			
								on: Last month	3 months ago	6 months ago	12 months ago
1	Food & Non-Alcoholic Beverages	16.51	101.9	101.8	101.8	102.6	102.1	0.1	0.1	(0.7)	(0.2)
1.1	Bread & Cereals	5.27	93.5	93.6	94.1	95.5	97.5	(0.1)	(0.6)	(2.1)	(4.0)
1.2	Meat (Fresh, Chilled & Frozen)	2.66	104.8	104.6	104.8	105.0	104.1	0.2	(0.0)	(0.3)	0.6
1.3	Fish (Fresh, Chilled & Frozen)	0.17	106.5	106.4	106.8	106.6	104.2	0.0	(0.3)	(0.1)	2.2
1.4	Milk, Cheese & Milk Products	1.49	103.9	103.8	103.3	102.1	101.2	0.1	0.6	1.8	2.7
1.5	Oils & Fats	0.70	99.1	99.5	100.5	100.3	100.0	(0.4)	(1.4)	(1.3)	(0.9)
1.6	Fruit	0.86	110.6	109.7	109.3	110.5	106.8	0.8	1.2	0.1	3.6
1.7	Vegetables	1.80	105.2	106.2	106.0	108.7	105.2	(0.9)	(0.8)	(3.2)	0.0
1.8	Sugar, Jam, Honey, Chocolate & Confectionery	1.29	112.0	110.0	109.2	109.5	110.2	1.8	2.6	2.3	1.7
1.9	Food not else where Classified	0.99	103.0	102.6	102.4	103.6	100.6	0.3	0.6	(0.7)	2.4
1.10	Coffee, Tea & Cocoa	0.36	118.1	117.5	116.5	116.0	113.5	0.5	1.4	1.8	4.1
1.11	Mineral Waters, Soft Drinks, Fruits & Veg. Juices	0.92	103.5	103.6	103.5	102.9	101.3	(0.2)	(0.1)	0.5	2.2
2	Alcoholic Beverages & Tobacco	7.83	105.7	105.9	105.9	105.4	104.7	(0.2)	(0.1)	0.3	0.9
2.1	Alcoholic Beverages	6.19	105.4	105.7	105.6	105.2	104.5	(0.2)	(0.1)	0.2	0.9
2.2	Tobacco	1.65	106.9	107.0	106.9	106.4	105.6	(0.1)	(0.1)	0.5	1.2
3	Clothing and Footwear	6.27	104.8	104.6	104.6	104.4	103.2	0.2	0.2	0.4	1.6
3.1	Clothing	2.42	103.7	103.5	103.5	103.8	102.4	0.2	0.2	(0.0)	1.3
3.2	Other articles of Clothing	1.01	105.2	105.2	105.2	104.6	103.0	0.0	(0.0)	0.5	2.1
3.3	Cleaning, Repair & Hire	0.99	108.9	108.4	108.3	106.6	105.1	0.5	0.5	2.2	3.6
3.4	Footwear	1.85	103.7	103.6	103.7	103.9	103.1	0.1	(0.1)	(0.2)	0.5
4	Housing, Water, Electr. Gas & Other Fuels	14.90	109.8	109.6	109.4	108.8	106.1	0.1	0.3	0.9	3.5
4.1	Rent paid by Tenants	6.25	105.1	105.1	105.1	104.1	102.7	0.0	0.0	1.0	2.4
4.2	Materials for Maintenance & Repair of dwellings	4.29	106.5	106.3	106.0	105.6	103.5	0.2	0.5	0.9	2.9
4.3	Water Supply & Misc. Services	1.50	125.4	125.4	125.4	125.4	125.4	0.0	0.0	0.0	0.0
4.4	Electricity Gas and other Fuels	2.86	116.7	116.4	115.6	115.5	107.3	0.2	0.9	1.0	8.7
5	Furnishing, H/H Equipment & Routine Maintenance	6.39	105.4	105.5	105.4	104.8	103.2	(0.1)	0.0	0.5	2.1
5.1	Furniture & Furnishing	1.65	105.5	105.5	105.2	104.7	103.5	0.0	0.3	0.8	1.9
5.2	Carpets & Other Floor Coverings	0.24	105.6	105.4	105.3	105.1	103.5	0.2	0.3	0.5	2.0
5.3	Household Textiles	0.41	104.6	104.3	104.3	104.2	102.9	0.3	0.4	0.4	1.7
5.4	Household Appliances	0.85	103.0	103.1	103.2	103.0	102.6	(0.1)	(0.2)	0.0	0.4
5.5	Glassware, Tableware & Household Utensils	0.40	101.8	101.9	101.6	101.1	100.8	(0.0)	0.2	0.8	1.0
5.6	Small Tools, Miscellaneous Accessories	0.06	103.3	103.7	104.3	103.7	102.2	(0.3)	(0.9)	(0.4)	1.1
5.7	Goods & Services for H/hold Maintenance	2.78	106.7	106.9	106.9	106.1	103.6	(0.2)	(0.2)	0.5	2.9

TABLE 2: NATIONAL CONSUMER PRICE GROUP & SECTION INDICES (SEPTEMBER 2016 = 100.0) Cont'd

	Group Section	Weights	This month Dec 2018	Last month Nov 2018	3 months ago Sep 2018	6 months ago Jun 2018	12 months ago Dec 2017	Percentage Change			
								on: Last month	3 months ago	6 months ago	12 months ago
6	Health	3.62	103.3	103.2	103.0	102.7	102.2	0.1	0.3	0.6	1.1
6.1	Medical Products, App. & Equip.	0.81	109.9	109.7	108.9	107.2	105.4	0.1	1.0	2.5	4.3
6.2	Out-patient Services	0.70	102.8	102.5	102.6	102.5	102.2	0.2	0.2	0.3	0.6
6.3	Hospital Services	2.10	101.0	101.0	101.0	101.0	101.0	0.0	0.0	0.0	0.0
7	Transport	20.65	114.8	114.6	109.1	109.0	104.3	0.2	5.2	5.3	10.0
7.1	Purchase of Vehicles	5.29	106.4	105.3	103.5	103.4	100.9	1.0	2.8	2.9	5.5
7.2	Operation of Personal Transport	11.13	119.9	120.0	110.7	110.6	107.4	(0.1)	8.3	8.4	11.6
7.3	Transport Services	4.22	111.9	111.9	111.9	111.9	100.5	0.0	0.0	0.0	11.3
8	Communication	4.27	91.9	92.1	92.1	92.0	101.2	(0.2)	(0.2)	(0.2)	(9.2)
8.1	Postal Services	0.15	126.5	126.5	126.5	126.5	126.5	0.0	0.0	0.0	0.0
8.2	Telephone & Telefax Equipment	0.71	101.8	102.8	102.8	102.6	101.7	(1.0)	(1.0)	(0.8)	0.1
8.3	Telephone & Telefax Services	3.41	88.3	88.3	88.3	88.3	100.0	(0.0)	(0.0)	(0.0)	(11.7)
9	Recreation & Culture	2.92	104.0	103.9	104.2	104.1	102.4	0.1	(0.2)	(0.1)	1.5
9.1	Audio Visual, Photographic & Info. Proce. Equip.	1.96	103.5	103.4	103.9	103.8	102.1	0.1	(0.3)	(0.2)	1.4
9.2	Other Recreational Items & Equip.	0.46	102.3	102.0	102.2	102.0	101.5	0.2	0.1	0.3	0.8
9.3	Recreational & Cultural Services	0.37	107.7	107.7	107.7	107.7	104.9	0.0	0.0	0.0	2.7
9.4	Newspapers, Books & Stationary	0.13	106.9	106.6	106.1	105.9	104.0	0.3	0.7	1.0	2.8
10	Education	3.34	109.8	109.8	109.8	109.8	104.2	0.0	0.0	0.0	5.4
10.1	Pre-Primary & Primary Education	0.80	121.9	121.9	121.8	121.8	105.4	0.0	0.0	0.0	15.7
10.2	Secondary & Tertiary Education	2.54	106.1	106.1	106.1	106.0	103.8	0.0	0.0	0.0	2.2
11	Restaurants & Hotels	2.76	107.7	107.4	107.3	106.6	104.6	0.3	0.3	1.0	2.9
11.1	Restaurants, Cafes and the Like	2.31	107.7	107.4	107.3	106.6	105.0	0.3	0.4	1.0	2.6
11.2	Accommodation Services	0.45	107.3	107.3	107.2	106.3	102.6	0.0	0.1	1.0	4.6
12	Miscellaneous Goods & Services	10.55	110.1	109.9	110.3	110.3	103.4	0.2	(0.2)	(0.2)	6.5
12.1	Personal Care	1.71	105.4	105.5	105.8	105.5	103.3	(0.1)	(0.4)	(0.2)	2.0
12.2	Personal Effects N.E.C.	1.24	104.1	103.9	104.4	104.3	103.7	0.2	(0.2)	(0.1)	0.4
12.3	Social Protection	0.07	121.0	120.9	120.9	120.9	102.1	0.0	0.0	0.0	18.6
12.4	Insurance	4.73	115.4	115.0	115.8	115.9	102.5	0.3	(0.3)	(0.4)	12.6
12.5	Financial Services	0.79	107.0	106.6	106.0	105.9	103.5	0.4	1.0	1.1	3.5
12.6	Taxes Licences, Fees	2.01	106.2	106.2	106.4	106.2	105.3	0.0	(0.2)	0.0	0.9
	All-Items Index	100.0	107.4	107.3	106.2	106.1	103.7	0.1	1.2	1.2	3.5

Consumer Price Index-December 2018

TABLE 3: CONSUMER PRICE INDEX BY TRADEABILITY (September 2016 = 100.0)

	All Items		Non-Tradable		Domestic Tradable		Imported Tradable		All Tradable		
	Index	Inflation	Index	Inflation	Index	Inflation	Index	Inflation	Index	Inflation	
Weights	100.00		35.83		20.39		43.77		64.17		
2016	Jan	97.9	2.7	96.3	7.3	98.0	2.6	99.1	-0.3	98.6	0.8
	Feb	97.9	3.0	96.4	7.0	98.4	2.5	98.8	0.7	98.6	1.4
	Mar	98.2	3.0	96.9	7.3	98.6	2.1	99.0	0.8	98.8	1.3
	Apr	99.1	2.8	98.7	6.1	99.1	2.3	99.4	0.9	99.3	1.4
	May	99.2	2.8	98.9	6.0	99.4	2.5	99.4	0.8	99.4	1.4
	Jun	99.4	2.7	99.4	5.4	99.3	2.5	99.6	0.9	99.5	1.5
	Jul	99.6	2.7	99.4	5.4	99.5	2.8	99.7	0.7	99.6	1.5
	Aug	99.7	2.6	99.5	5.3	99.9	3.0	99.9	0.6	99.9	1.5
	Sept	100.0	2.8	100.0	4.9	100.0	3.5	100.0	0.9	100.0	1.9
	Oct	100.2	2.7	100.1	4.9	100.3	3.1	100.2	0.9	100.2	1.9
	Nov	100.4	2.9	100.1	4.9	100.7	3.4	100.5	1.2	100.6	2.1
	Dec	100.5	3.0	100.1	4.3	100.9	3.6	100.6	1.8	100.7	2.5
2017	Jan	101.0	3.1	100.4	4.3	102.2	4.3	100.8	1.7	101.2	2.6
	Feb	101.2	3.4	100.5	4.3	102.7	4.3	101.1	2.4	101.6	3.1
	Mar	101.7	3.5	100.8	3.9	103.1	4.6	101.8	2.9	102.2	3.5
	Apr	102.5	3.4	102.4	3.8	103.4	4.3	102.1	2.7	102.5	3.3
	May	102.7	3.5	102.6	3.7	103.7	4.3	102.3	2.9	102.7	3.4
	Jun	102.9	3.5	103.0	3.6	103.5	4.2	102.5	2.9	102.8	3.4
	Jul	103.0	3.4	103.1	3.7	103.4	3.8	102.7	3.0	103.0	3.3
	Aug	103.1	3.4	103.1	3.7	103.2	3.4	103.0	3.1	103.1	3.2
	Sept	103.2	3.2	103.5	3.5	102.6	2.6	103.1	3.1	103.0	3.0
	Oct	103.2	3.0	103.5	3.4	102.5	2.2	103.2	3.0	103.0	2.8
	Nov	103.4	2.9	103.5	3.4	102.3	1.6	103.6	3.1	103.3	2.7
	Dec	103.7	3.2	103.9	3.7	102.3	1.3	104.3	3.7	103.7	3.0
2018	Jan	104.1	3.1	104.4	3.9	102.7	0.5	104.6	3.8	104.0	2.8
	Feb	104.4	3.2	104.5	4.0	103.0	0.3	105.0	3.8	104.4	2.8
	Mar	104.6	2.8	104.8	4.0	103.2	0.1	105.0	3.1	104.5	2.2
	Apr	106.0	3.4	108.4	5.8	103.3	-0.1	105.2	3.1	104.7	2.1
	May	106.1	3.3	108.4	5.7	103.4	-0.2	105.3	3.0	104.8	2.0
	Jun	106.1	3.1	107.5	4.4	103.3	-0.2	106.2	3.6	105.3	2.4
	Jul	106.2	3.1	107.7	4.4	103.3	-0.1	106.2	3.4	105.4	2.3
	Aug	106.2	3.0	107.7	4.4	103.2	0.0	106.2	3.2	105.3	2.2
	Sept	106.2	2.9	107.9	4.3	103.2	0.6	106.1	2.9	105.2	2.1
	Oct	106.9	3.6	107.8	4.1	103.2	0.7	107.8	4.5	106.4	3.3
	Nov	107.3	3.8	107.8	4.2	103.4	1.0	108.7	4.9	107.1	3.7
	Dec	107.4	3.5	107.9	3.9	103.4	1.1	108.8	4.4	107.2	3.4
% Change on last month		0.1		0.1		0.1		0.1		0.1	

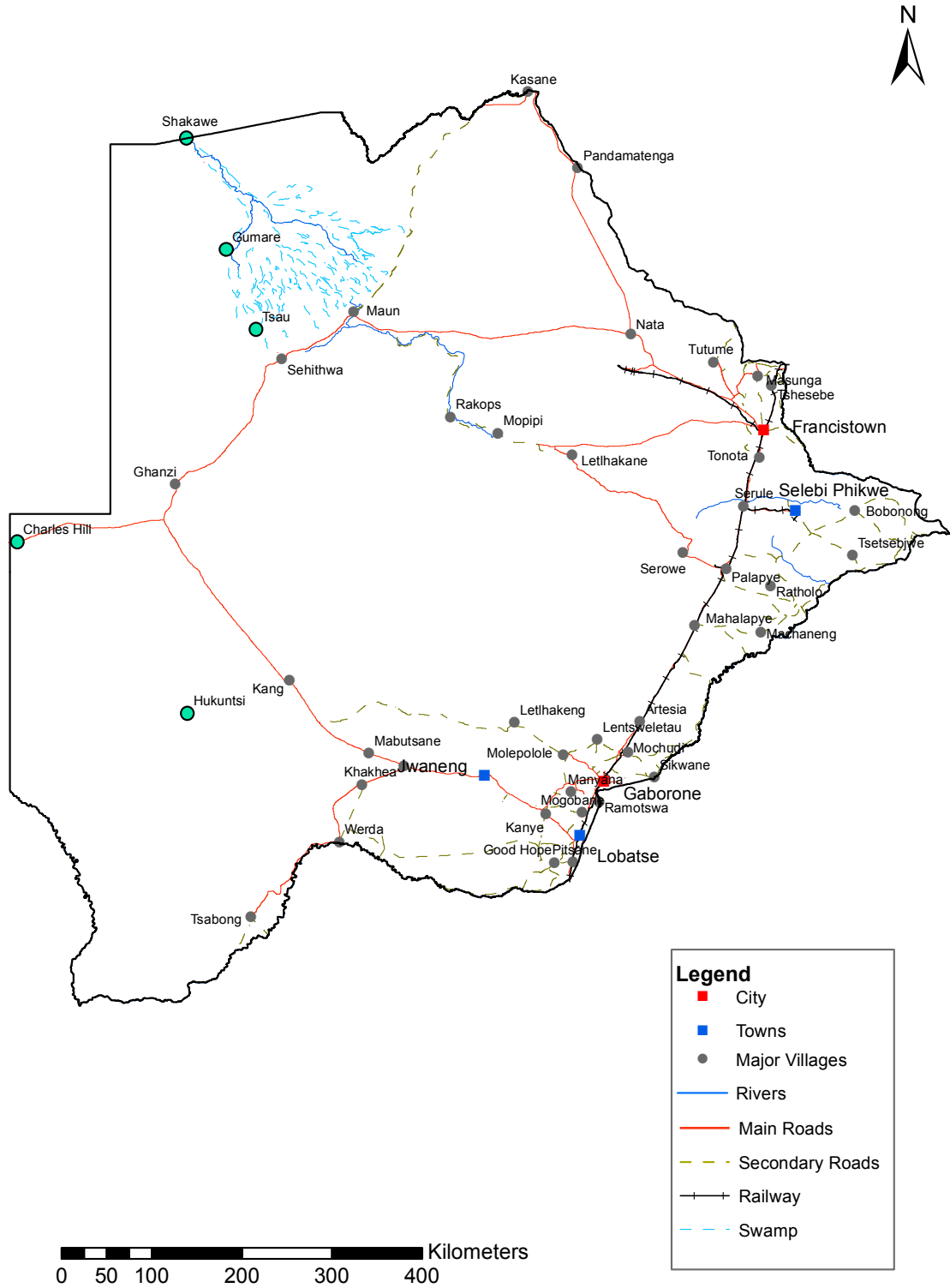
TABLE 4: Core Inflation Rates by Exclusion and Trimmed Mean

Year	Month	Consumer Price Index (Trimmed Mean) (September 2016 = 100)	Core Monthly Inflation Rate (Trimmed Mean) (percentage)	Consumer Price Index (Excluding Administered Prices) (September 2016 = 100)	Core Monthly Inflation (Excluding Administered Prices) (percentage)
2016					
	Jan	97.5	2.8	97.5	4.0
	Feb	97.7	2.6	97.8	3.7
	Mar	97.9	2.5	98.1	3.7
	Apr	98.5	2.4	98.9	3.9
	May	98.7	2.3	99.1	3.8
	Jun	98.7	2.4	99.3	3.6
	Jul	99.5	2.5	99.5	3.6
	Aug	99.7	2.4	99.7	3.6
	Sept	100.0	2.6	100.0	3.6
	Oct	100.2	2.2	100.2	3.4
	Nov	100.4	2.5	100.6	3.7
	Dec	100.5	2.5	100.7	3.7
2017					
	Jan	101.0	2.7	101.3	3.9
	Feb	101.1	2.9	101.6	3.9
	Mar	101.7	3.1	102.0	3.9
	Apr	102.0	3.1	102.2	3.3
	May	102.1	3.1	102.5	3.4
	Jun	102.4	2.9	102.6	3.3
	Jul	102.5	2.9	102.8	3.3
	Aug	102.6	2.9	102.9	3.3
	Sept	102.7	2.7	103.0	3.0
	Oct	102.7	2.6	103.0	2.8
	Nov	103.0	2.5	103.0	2.4
	Dec	103.5	2.9	103.0	2.3
2018					
	Jan	103.8	2.8	103.5	2.2
	Feb	104.1	2.9	103.8	2.2
	Mar	104.4	2.6	104.0	2.0
	Apr	105.4	3.1	104.2	1.9
	May	105.5	3.0	104.3	1.8
	Jun	106.5	3.2	104.5	1.8
	Jul	106.6	3.1	104.6	1.7
	Aug	106.6	3.0	104.5	1.6
	Sept	106.7	2.9	104.6	1.6
	Oct	107.5	3.7	104.6	1.6
	Nov	107.6	3.8	104.7	1.7
	Dec	108.0	3.6	104.9	1.8

Table 5: Average Annual Inflation (September 2016=100)

	Group	Weights	2007	2008	2009	2010	2011	2012	2013	2014	2015	2016	2017	2018
1	Food & Non-Alcoholic Beverages	16.51	11.2	20.2	14.7	3.6	6.9	8.0	5.4	3.0	1.3	2.7	3.4	(0.5)
2	Alcoholic Beverages,Tobacco & Narcotics	7.83	10.1	13.2	35.2	7.1	8.4	7.6	10.3	9.0	6.1	2.5	4.5	1.1
3	Clothing and Footwear	6.27	1.6	2.0	8.4	8.0	8.9	7.5	6.3	6.0	7.6	6.5	3.2	1.8
4	Housing, Water, Electr. Gas & Other Fuels	14.90	4.7	8.1	4.8	6.4	8.4	7.7	4.3	3.9	7.1	6.3	5.4	4.1
5	Furnishing, H/H Equipment& Routine Maintenance	6.39	4.9	6.0	11.9	9.4	9.0	7.3	4.9	5.0	6.1	3.0	3.3	2.1
6	Health	3.62	12.5	11.3	5.5	2.7	4.5	5.9	5.5	8.3	6.3	3.0	2.4	1.1
7	Transport	20.65	7.9	21.2	(8.4)	12.1	13.2	10.8	7.3	1.2	(5.1)	(2.7)	1.6	7.5
8	Communication	4.27	(5.1)	(0.3)	(0.3)	1.2	(3.0)	(1.4)	0.3	0.3	0.3	0.2	0.5	(4.6)
9	Recreation & Culture	2.92	(1.8)	2.3	5.0	6.0	8.3	5.8	4.5	4.2	5.7	3.0	2.2	1.8
10	Education	3.34	6.0	3.9	3.9	5.8	10.6	6.4	4.7	7.4	6.4	3.7	4.1	5.5
11	Restaurants & Hotels	2.76	15.1	12.7	18.8	9.0	9.3	8.4	7.9	7.6	5.5	4.0	3.7	3.4
12	Miscellaneous Goods & Services	10.55	4.3	4.9	3.8	7.0	5.3	2.0	1.2	5.2	7.2	7.5	3.9	6.4
All-Items Index		100.0	7.1	12.6	8.2	6.9	8.5	7.5	5.9	4.4	3.1	2.8	3.3	3.2

CPI AREA COVERAGE



Compiled and Prepared by Statistics Botswana, 2016

GLOSSARY

Consumer Price Index (CPI) is an index which measures price changes in goods and services with reference to a base period.

Inflation is a measurement of prices movement of goods and services in a particular country.

Domestic Tradable refers to the goods and services which a country (Botswana) can export to other countries.

Imported Tradable represents the goods and services which a country (Botswana) imports from other countries (trading partners).

Non-Tradable refers to the goods and services which a country cannot either export or import to other countries.

All –Tradable refers to the total of **Domestic** and **Imported tradable**.

Trimmed Mean Core Inflation- attempts to remove 8 percent (by weight) of the commodity sub-groups with the largest price changes at each of the ends of an ordered series of price changes in any given month.

Core inflation by Exclusion is a measure used to remove the volatility inherent in prices that are only adjusted periodically and not always in response to currently prevailing market forces.