

Consumer Price Index

August 2017



Published by

STATISTICS BOTSWANA
Private Bag 0024, Gaborone
Tel: 3671300 Fax: 3952201
Email: info@statsbots.org.bw

August 2017

Copyright © Statistics Botswana 2017



CONSUMER PRICE INDEX
AUGUST 2017

CONTENTS

COMMENTARY

Section 1: Headline Inflation
Section 2: Core Inflation

CHARTS

1. National Rates of Inflation, August 2014 – August 2017
2. Monthly Changes in the Cost-of-Living Index, August 2014 – August 2017
3. Non-Tradable Inflation Rates, August 2014 – August 2017
4. Tradable Inflation Rates, August 2014 – August 2017

TABLES

1. Cost-of-Living Index Series (January 2015 – August 2017)
2. National Cost-of-Living Group and Section Indices
3. Cost-of-Living Index by Tradability (January 2015 – August 2017)
4. Core Inflation Rates by Exclusion and Trimmed Mean
5. Annual Average Inflation Rates 2007-2016

GLOSSARY

COMMENTARY

Section 1: Headline Inflation

The annual inflation rate in August 2017 was 3.4 percent, the same rate as in July 2017. The inflation rates for regions between July and August 2017 showed that Cities & Towns' went down to 3.4 percent from 3.5 percent, Rural Villages' dropped to 3.6 percent from 3.7 percent and Urban Villages' remained unchanged at 3.2 percent between the two months.

The August national Consumer Price Index moved from 103.0 in July 2017 to 103.1 in August 2017, an increase of 0.1 percent. The Cities & Towns' index rose by 0.1 percent, advancing from 102.9 in July 2017 to 103.0 in August 2017. The Urban Villages' index moved from 102.9 in July to 103.0 in August, while the Rural Villages' index realized a rise of 0.1 percent, moving from 103.3 to 103.4 between the two months.

Group indices were generally moving at a slow pace between July and August 2017, recording changes of less than 1.0 percent.

The Clothing and Footwear group index went up from 102.6 to 102.8, recording a rise of 0.2 percent between the two months. The increase was attributed to the rise in the section indices of Clothing (0.4 percent) and other Articles of clothing (0.1 percent).

The Transport group index registered an increase of 0.2 percent, from 101.4 in July to 101.6 in August. The rise was mainly attributable to an increase in the constituent section index of Purchase of Vehicles (0.8 percent).

The Restaurants & Hotels index group advanced from 103.3 to 103.5, registering an increase of 0.2 percent during the period under review. Contributing to the increase was section index of the Restaurants, Cafes and the like which went up by 0.3 percent.

The All-Tradable inflation rate was 3.2 percent in August, a decline of 0.1 of a percentage point on the July rate of 3.3 percent. The Domestic Tradable inflation rate went down from 3.8 percent in July to 3.4 percent in August. The Imported Tradable inflation rate increased from 3.0 percent in July to 3.1 percent in August. The Non-Tradable inflation rate remained the same at 3.7 percent between the two periods.

The All-Tradable index moved from 103.0 in July to 103.1 in August registering a rise of 0.1 percent. The Imported Tradable index moved from 102.7 in July to 103.0 in August, recording an increase of 0.2 percent. The Domestic Tradable index declined from 103.4 in July to 103.2 in August, registering a drop of 0.1 percent, while the Non-Tradable index remained constant at 103.1 between the two periods.

Section 2: Core Inflation

The Trimmed Mean Core Inflation rate in August 2017 was 2.9 percent, the same rate as in July 2017. The Core Inflation rate by exclusion also remained stable at 3.3 percent between the two periods.

CHARTS

Chart 1: National Inflation Rate 2014 - 2017

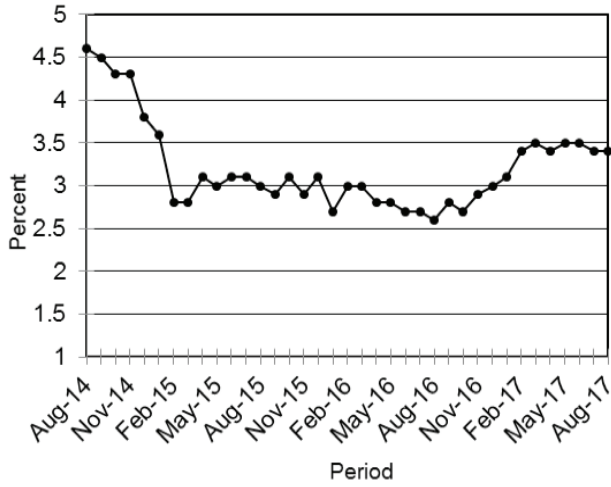


Chart 2: Monthly Changes in Cost-of-Living Index 2014 - 2017

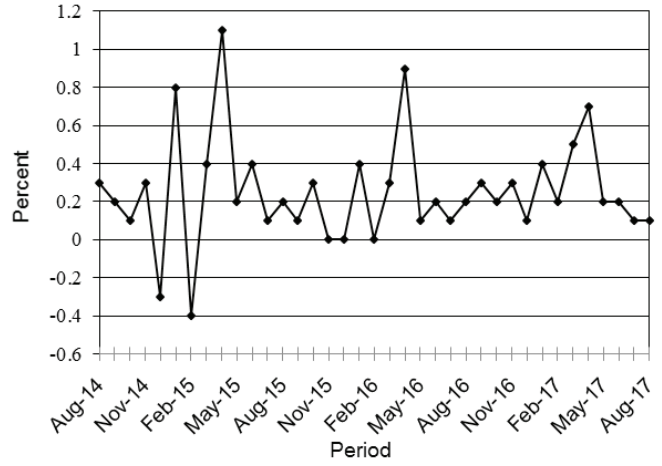


Chart 3: Non-Tradable Inflation 2014 - 2017

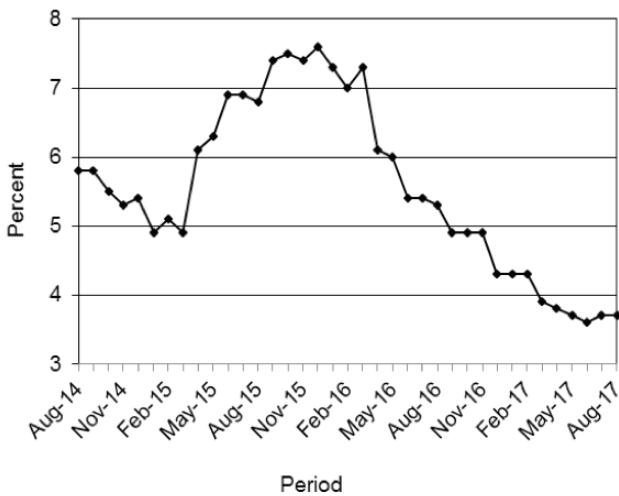
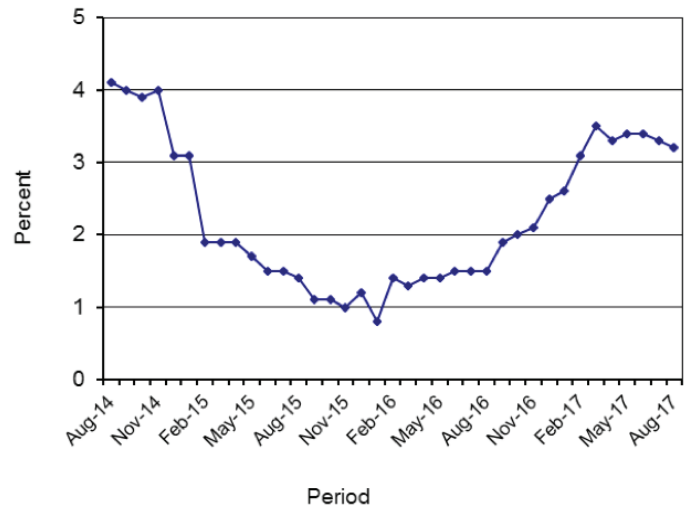


Chart 4: Tradable Inflation 2014 - 2017



A.N. Majelantle
 Statistician General
 15 September 2017

TABLES

TABLE 1: COST OF LIVING INDEX (September 2016 =100.0)

		Food	Alcohol and Tobacco	Clothing and Footwear	Housing	Furniture etc	Health	Transport	Communication	Rec. & Culture	Education	Rest. & Hotels	Miscellaneous
Weights		16.51	7.83	6.27	14.9	6.39	3.62	20.65	4.27	2.92	3.34	2.76	10.55
2015	Jan	96.5	94.9	89.7	88.4	94.1	94.4	107.0	99.5	92.9	96.4	92.6	87.0
	Feb	96.7	95.8	90.7	88.3	94.9	94.5	102.4	99.5	93.2	96.4	94.0	87.2
	Mar	96.7	96.8	91.4	88.9	95.5	94.6	102.5	99.5	93.3	96.4	94.5	87.2
	Apr	96.7	97.2	91.8	92.2	95.7	94.6	102.7	99.5	97.7	96.4	94.6	92.5
	May	96.7	97.5	92.3	92.1	95.9	96.9	102.7	100.0	97.9	96.4	94.8	92.5
	Jun	96.6	97.6	92.9	93.7	96.6	97.0	102.8	100.0	97.9	96.4	95.4	92.9
	Jul	96.7	97.8	93.3	93.7	96.7	97.3	102.9	100.0	98.1	96.4	95.6	93.0
	Aug	96.9	98.0	94.1	93.8	97.0	97.3	102.9	100.0	98.1	96.5	95.9	93.1
	Sept	97.0	97.3	94.6	96.0	97.6	97.5	101.8	100.0	98.2	96.5	96.2	93.1
	Oct	97.2	98.2	95.2	96.0	97.9	97.5	101.8	100.0	98.4	96.5	97.1	93.2
	Nov	97.2	98.4	95.6	95.9	97.8	97.6	101.8	100.0	98.5	96.5	97.3	93.2
	Dec	97.2	98.5	96.0	97.0	98.1	97.6	100.5	100.0	98.6	96.5	97.6	93.1
2016	Jan	97.6	98.6	96.8	97.1	98.2	97.6	100.5	100.0	98.9	99.9	97.9	93.6
	Feb	98.2	98.7	97.4	96.9	98.3	97.7	99.1	100.0	99.5	99.9	98.2	93.3
	Mar	98.5	98.8	98.0	98.2	98.5	97.8	99.2	100.0	99.6	99.9	98.4	93.5
	Apr	99.3	99.3	98.5	98.2	98.7	98.0	99.5	100.0	99.6	100.0	98.7	99.6
	May	99.4	99.4	98.9	98.2	98.8	99.9	99.5	100.0	99.7	100.0	98.9	99.6
	Jun	99.1	99.6	99.4	99.0	99.3	100.0	99.8	100.0	99.6	100.0	99.2	99.9
	Jul	99.3	99.9	99.6	99.0	99.4	100.0	99.9	100.0	99.7	100.0	99.3	100.0
	Aug	99.7	100.0	99.9	99.0	99.5	100.0	100.0	100.0	99.8	100.0	99.6	100.0
	Sept	100.0	100.0	100.0	100.0	100.0	100.0	100.0	100.0	100.0	100.0	100.0	100.0
	Oct	100.4	100.7	100.2	100.0	100.2	100.0	100.0	100.0	100.2	100.0	100.2	100.4
	Nov	100.9	101.2	100.6	100.1	100.6	100.2	100.1	100.0	100.2	100.0	100.5	100.5
	Dec	101.0	101.3	100.7	100.2	100.8	100.3	100.2	100.0	100.3	100.0	100.6	100.5
2017	Jan	101.9	102.3	101.2	100.4	101.2	100.8	99.7	100.1	100.7	104.0	101.4	100.7
	Feb	102.3	103.0	101.4	100.6	101.7	100.9	99.8	100.1	101.1	104.1	101.7	101.0
	Mar	102.8	103.6	101.7	101.0	102.1	101.1	100.9	100.1	101.3	104.1	102.0	101.4
	Apr	103.1	104.1	101.9	104.8	102.3	101.2	101.0	100.1	102.0	104.1	102.2	101.5
	May	103.4	104.7	102.1	104.9	102.4	101.2	101.1	100.2	102.0	104.1	102.5	101.6
	Jun	103.3	104.7	102.2	105.0	102.7	101.8	101.4	100.3	102.1	104.1	102.8	102.6
	Jul	103.6	104.8	102.6	105.1	102.8	102.0	101.4	100.3	102.2	104.2	103.3	102.6
	Aug	103.5	104.9	102.8	105.2	102.9	102.0	101.6	100.3	102.3	104.2	103.5	102.7
% Change on Last month		(0.1)	0.1	0.2	0.0	0.1	0.1	0.2	0.1	0.1	0.0	0.2	0.0

TABLE 1: COST OF LIVING INDEX (Cont.)

		All Items Index	National Inflation Rate	Monthly Change	Towns & Cities Index	Urban Village Index	Rural Villages Index	Annual Inflation		
								Towns & Cities	Urban Villages	Rural Villages
		100	%	%	41.8	34.5	23.7	%	%	%
2015	Jan	95.4	3.6	0.8	95.3	95.7	95.0	3.6	3.7	3.7
	Feb	95.0	2.8	(0.4)	94.9	95.2	95.0	2.6	2.9	3.2
	Mar	95.3	2.8	0.4	95.1	95.6	95.4	2.5	2.8	3.6
	Apr	96.4	3.1	1.1	96.5	96.3	96.1	3.1	3.0	3.4
	May	96.5	3.0	0.2	96.5	96.5	96.5	3.0	2.8	3.6
	Jun	96.9	3.1	0.4	96.9	96.9	96.6	3.1	3.0	3.4
	Jul	97.0	3.1	0.1	97.1	97.1	96.7	3.1	3.0	3.5
	Aug	97.2	3.0	0.2	97.2	97.3	96.9	2.8	3.0	3.4
	Sept	97.3	2.9	0.1	97.3	97.4	97.2	2.9	2.8	3.3
	Oct	97.6	3.1	0.3	97.7	97.6	97.2	3.2	3.0	3.1
	Nov	97.6	2.9	0.0	97.7	97.6	97.3	2.9	2.7	3.0
	Dec	97.6	3.1	(0.0)	97.7	97.5	97.4	3.2	2.8	3.4
2016	Jan	97.9	2.7	0.4	97.9	98.1	97.7	2.7	2.6	2.8
	Feb	97.9	3.0	(0.0)	97.7	98.2	97.9	2.9	3.2	3.1
	Mar	98.2	3.0	0.3	98.1	98.6	98.0	3.1	3.2	2.7
	Apr	99.1	2.8	0.9	99.0	99.4	98.7	2.6	3.2	2.7
	May	99.2	2.8	0.1	99.1	99.5	98.9	2.7	3.1	2.5
	Jun	99.4	2.7	0.2	99.4	99.7	99.1	2.5	2.8	2.6
	Jul	99.6	2.7	0.1	99.5	99.7	99.6	2.5	2.7	3.0
	Aug	99.7	2.6	0.2	99.6	99.9	99.8	2.6	2.6	2.9
	Sept	100.0	2.8	0.3	100.0	100.0	100.0	2.8	2.7	2.9
	Oct	100.2	2.7	0.2	100.2	100.2	100.2	2.5	2.7	3.1
	Nov	100.4	2.9	0.3	100.3	100.4	100.7	2.7	2.9	3.5
	Dec	100.5	3.0	0.1	100.5	100.4	100.8	2.8	3.0	3.5
2017	Jan	101.0	3.1	0.4	100.9	100.8	101.3	3.1	2.8	3.6
	Feb	101.2	3.4	0.2	101.1	101.1	101.6	3.5	2.9	3.8
	Mar	101.7	3.5	0.5	101.6	101.6	102.1	3.6	3.0	4.2
	Apr	102.5	3.4	0.7	102.3	102.4	102.8	3.3	3.0	4.2
	May	102.7	3.5	0.2	102.5	102.6	103.0	3.4	3.1	4.1
	Jun	102.9	3.5	0.2	102.8	102.9	103.0	3.4	3.3	3.9
	Jul	103.0	3.4	0.1	102.9	102.9	103.3	3.5	3.2	3.7
	Aug	103.1	3.4	0.1	103.0	103.0	103.4	3.4	3.2	3.6
% Change on last month		0.1			0.1	0.1	0.1			

TABLE 2 :National Cost-of-Living Group and Section Indices (September 2016=100.0)

Group Section	Weights	This month Aug 2017	Last month Jul 2017	3 months ago May 2017	6 months ago Feb 2017	12 months ago Aug 2016	Percentage Change on:				
							Last month	3 months ago	6 months ago	12 months ago	
1	Food & Non-Alcoholic Beverages	16.51	103.5	103.6	103.4	102.3	99.7	(0.1)	0.1	1.2	3.8
1.1	Bread & Cereals	5.27	101.9	102.1	102.4	101.6	99.4	(0.3)	(0.5)	0.2	2.5
1.2	Meat (Fresh, Chilled & Frozen)	2.66	104.9	104.8	104.6	103.6	99.9	0.0	0.2	1.2	4.9
1.3	Fish (Fresh, Chilled & Frozen)	0.17	104.5	104.4	103.1	101.5	99.8	0.0	1.3	3.0	4.7
1.4	Milk, Cheese & Milk Products	1.49	100.4	99.8	100.1	99.5	99.8	0.5	0.3	0.8	0.5
1.5	Oils & Fats	0.70	100.7	102.5	102.5	102.0	100.0	(1.7)	(1.8)	(1.2)	0.7
1.6	Fruit	0.86	105.4	106.1	106.8	106.4	99.4	(0.7)	(1.3)	(1.0)	6.0
1.7	Vegetables	1.80	103.8	103.8	102.8	103.5	100.7	0.1	1.0	0.3	3.1
1.8	Sugar, Jam, Honey, Chocolate & Confectionery	1.29	110.6	110.3	109.1	103.2	97.9	0.3	1.4	7.1	13.0
1.9	Food not else where Classified	0.99	101.2	101.8	101.7	100.8	99.8	(0.5)	(0.4)	0.4	1.4
1.10	Coffee, Tea & Cocoa	0.36	111.0	110.3	108.3	103.4	99.6	0.6	2.5	7.3	11.5
1.11	Mineral Waters, Soft Drinks, Fruits & Veg. Juices	0.92	102.6	101.9	101.5	100.6	99.9	0.7	1.1	1.9	2.7
2	Alcoholic Beverages, Tobacco & Narcotics	7.83	104.9	104.8	104.7	103.0	100.0	0.1	0.2	1.8	4.9
2.1	Alcoholic Beverages	6.19	105.0	104.9	104.9	103.4	100.0	0.1	0.1	1.5	5.0
2.2	Tobacco	1.65	104.5	104.2	103.8	101.4	99.9	0.4	0.7	3.1	4.7
3	Clothing and Footwear	6.27	102.8	102.6	102.1	101.4	99.9	0.2	0.7	1.4	2.9
3.1	Clothing	2.42	102.4	102.0	101.7	100.9	100.0	0.4	0.7	1.4	2.4
3.2	Other articles of Clothing	1.01	102.1	102.0	101.6	100.7	99.8	0.1	0.5	1.4	2.3
3.3	Cleaning, Repair & Hire	0.99	104.5	104.5	102.7	102.4	99.9	0.0	1.7	2.1	4.6
3.4	Footwear	1.85	102.8	102.8	102.5	101.8	99.7	0.0	0.3	1.0	3.1
4	Housing, Water, Electr. Gas & Other Fuels	14.90	105.2	105.1	104.9	100.6	99.0	0.0	0.3	4.6	6.3
4.1	Rent paid by Tenants	6.25	101.0	101.0	100.6	100.0	97.9	0.0	0.3	1.0	3.1
4.2	Materials for Maintenance & Repair of dwellings	4.29	103.2	103.0	102.5	101.7	100.0	0.1	0.6	1.5	3.2
4.3	Water Supply & Misc. Services	1.50	125.4	125.4	125.4	100.0	100.0	0.0	0.0	25.4	25.4
4.4	Electricity Gas and other Fuels	2.86	106.9	106.9	106.8	100.4	100.0	0.0	0.1	6.5	6.9
5	Furnishing, H/H Equipment & Routine Maintenance	6.39	102.9	102.8	102.4	101.7	99.5	0.1	0.5	1.2	3.4
5.1	Furniture & Furnishing	1.65	102.5	102.3	101.9	101.7	99.7	0.2	0.6	0.8	2.8
5.2	Carpets & Other Floor Coverings	0.24	103.3	103.2	102.4	101.9	99.6	0.1	0.9	1.3	3.7
5.3	Household Textiles	0.41	102.4	102.1	102.0	101.6	99.6	0.2	0.4	0.7	2.8
5.4	Household Appliances	0.85	102.6	102.5	102.2	101.8	99.9	0.1	0.3	0.8	2.7
5.5	Glassware, Tableware & Household Utensils	0.40	101.1	101.1	101.0	100.7	99.8	0.0	0.1	0.4	1.3
5.6	Small Tools, Miscellaneous Accessories	0.06	101.7	101.7	101.3	101.0	100.0	0.0	0.4	0.7	1.7
5.7	Goods & Services for H/hold Maintenance	2.78	103.7	103.6	103.1	101.8	99.3	0.1	0.5	1.8	4.4

TABLE 2 :National Cost-of-Living Group and Section Indices

(September 2016=100.0) Cont

Group Section	Weights	This month Aug 2017	Last month Jul 2017	3 months ago May 2017	6 months ago Feb 2017	12 months ago Aug 2016	Percentage Change on:				
							Last month	3 months ago	6 months ago	12 months ago	
6	Health	3.62	102.0	102.0	101.2	100.9	100.0	0.1	0.8	1.1	2.1
6.1	Medical Products, App. & Equip.	0.81	105.2	105.0	104.4	103.1	99.9	0.2	0.7	2.0	5.3
6.2	Out-patient Services	0.70	101.7	101.5	101.1	101.1	100.0	0.2	0.6	0.6	1.7
6.3	Hospital Services	2.10	101.0	101.0	100.0	100.0	100.0	0.0	1.0	1.0	1.0
7	Transport	20.65	101.6	101.4	101.1	99.8	100.0	0.2	0.5	1.8	1.6
7.1	Purchase of Vehicles	5.29	100.3	99.4	98.6	98.7	100.0	0.8	1.7	1.6	0.3
7.2	Operation of Personal Transport	11.13	102.6	102.6	102.6	100.3	100.0	0.0	0.1	2.4	2.7
7.3	Transport Services	4.22	100.5	100.5	100.5	100.0	100.0	0.0	0.0	0.5	0.5
8	Communication	4.27	100.3	100.3	100.2	100.1	100.0	0.1	0.2	0.3	0.3
8.1	Postal Services	0.15	100.0	100.0	100.0	100.0	100.0	0.0	0.0	0.0	0.0
8.2	Telephone & Telefax Equipment	0.71	102.0	101.6	100.9	100.4	100.0	0.4	1.1	1.6	2.0
8.3	Telephone & Telefax Services	3.41	100.0	100.0	100.0	100.0	100.0	0.0	(0.0)	(0.0)	0.0
9	Recreation & Culture	2.92	102.3	102.2	102.0	101.1	99.8	0.1	0.3	1.2	2.5
9.1	Audio Visual, Photographic & Info. Proce. Equip.	1.96	102.1	102.0	101.8	101.4	99.7	0.0	0.3	0.7	2.4
9.2	Other Recreational Items & Equip.	0.46	101.1	100.8	100.6	100.5	99.7	0.3	0.6	0.6	1.4
9.3	Recreational & Cultural Services	0.37	104.8	104.8	104.8	100.0	100.0	0.0	0.0	4.8	4.8
9.4	Newspapers, Books & Stationary	0.13	102.9	102.7	102.4	100.7	99.5	0.1	0.5	2.2	3.4
10	Education	3.34	104.2	104.2	104.1	104.1	100.0	0.0	0.1	0.1	4.2
10.1	Pre-Primary & Primary Education	0.80	105.4	105.3	105.1	105.0	100.0	0.1	0.3	0.3	5.4
10.2	Secondary & Tertiary Education	2.54	103.8	103.8	103.8	103.8	100.0	0.0	0.0	0.0	3.8
11	Restaurants & Hotels	2.76	103.5	103.3	102.5	101.7	99.6	0.2	1.0	1.8	3.9
11.1	Restaurants, Cafes and the Like	2.31	103.8	103.5	102.7	101.9	99.6	0.3	1.0	1.9	4.2
11.2	Accommodation Services	0.45	102.3	102.3	101.8	100.6	99.2	0.0	0.5	1.7	3.1
12	Miscellaneous Goods & Services	10.55	102.7	102.6	101.6	101.0	100.0	0.0	1.0	1.7	2.7
12.1	Personal Care	1.71	103.8	103.8	103.2	101.7	99.8	(0.0)	0.6	2.0	4.0
12.2	Personal Effects N.E.C.	1.24	103.3	103.1	102.4	102.0	99.9	0.2	0.9	1.3	3.4
12.3	Social Protection	0.07	102.1	102.0	102.0	102.0	100.0	0.0	0.1	0.1	2.1
12.4	Insurance	4.73	101.0	101.0	101.0	100.7	100.0	0.0	0.0	0.3	1.0
12.5	Financial Services	0.79	103.1	103.0	102.5	101.1	99.9	0.1	0.6	1.9	3.2
12.6	Taxes Licences, Fees	2.01	105.1	105.1	100.9	100.5	100.0	0.0	4.2	4.7	5.1
	All-Items Index	100.0	103.1	103.0	102.7	101.2	99.7	0.1	0.4	1.9	3.4

TABLE 3: COST-OF-LIVING INDEX BY TRADABILITY (September 2016 = 100.0)

Weights	All Items		Non-Tradable		Domestic Tradable		Imported Tradable		All Tradable		
	Index	Inflation	Index	Inflation	Index	Inflation	Index	Inflation	Index	Inflation	
	100		35.83		20.39		43.77		64.17		
2015	Jan	95.4	3.6	89.8	4.9	95.5	4.2	99.4	2.5	97.9	3.1
	Feb	95.0	2.8	90.0	5.1	96.0	3.4	98.0	0.9	97.2	1.9
	Mar	95.3	2.8	90.4	4.9	96.6	3.6	98.2	1.0	97.6	1.9
	Apr	96.4	3.1	93.0	6.1	96.9	3.5	98.5	0.9	97.9	1.9
	May	96.5	3.0	93.3	6.3	96.9	3.2	98.6	0.8	98.0	1.7
	Jun	96.9	3.1	94.3	6.9	96.9	3.0	98.7	0.6	98.0	1.5
	Jul	97.0	3.1	94.4	6.9	96.9	2.9	99.0	0.7	98.2	1.5
	Aug	97.2	3.0	94.5	6.8	97.0	2.9	99.3	0.6	98.4	1.4
	Sept	97.3	2.9	95.3	7.4	96.6	2.7	99.2	0.2	98.2	1.1
	Oct	97.6	3.1	95.4	7.5	97.3	3.3	99.3	0.2	98.3	1.1
	Nov	97.6	2.9	95.4	7.4	97.4	3.4	99.3	-0.4	98.6	1.0
	Dec	97.6	3.1	96.0	7.6	97.4	3.5	98.9	0.0	98.3	1.2
2016	Jan	97.9	2.7	96.3	7.3	98.0	2.6	99.1	-0.3	98.6	0.8
	Feb	97.9	3.0	96.4	7.0	98.4	2.5	98.8	0.7	98.6	1.4
	Mar	98.2	3.0	96.9	7.3	98.6	2.1	99.0	0.8	98.8	1.3
	Apr	99.1	2.8	98.7	6.1	99.1	2.3	99.4	0.9	99.3	1.4
	May	99.2	2.8	98.9	6.0	99.4	2.5	99.4	0.8	99.4	1.4
	Jun	99.4	2.7	99.4	5.4	99.3	2.5	99.6	0.9	99.5	1.5
	Jul	99.6	2.7	99.4	5.4	99.5	2.8	99.7	0.7	99.6	1.5
	Aug	99.7	2.6	99.5	5.3	99.9	3.0	99.9	0.6	99.9	1.5
	Sept	100.0	2.8	100.0	4.9	100.0	3.5	100.0	0.9	100.0	1.9
	Oct	100.2	2.7	100.1	4.9	100.3	3.1	100.2	0.9	100.2	1.9
	Nov	100.4	2.9	100.1	4.9	100.7	3.4	100.5	1.2	100.6	2.1
	Dec	100.5	3.0	100.1	4.3	100.9	3.6	100.6	1.8	100.7	2.5
2017	Jan	101.0	3.1	100.4	4.3	102.2	4.3	100.8	1.7	101.2	2.6
	Feb	101.2	3.4	100.5	4.3	102.7	4.3	101.1	2.4	101.6	3.1
	Mar	101.7	3.5	100.8	3.9	103.1	4.6	101.8	2.9	102.2	3.5
	Apr	102.5	3.4	102.4	3.8	103.4	4.3	102.1	2.7	102.5	3.3
	May	102.7	3.5	102.6	3.7	103.7	4.3	102.3	2.9	102.7	3.4
	Jun	102.9	3.5	103.0	3.6	103.5	4.2	102.5	2.9	102.8	3.4
	Jul	103.0	3.4	103.1	3.7	103.4	3.8	102.7	3.0	103.0	3.3
	Aug	103.1	3.4	103.1	3.7	103.2	3.4	103.0	3.1	103.1	3.2
% Change on last month		0.1		0.0		(0.1)		0.2		0.1	

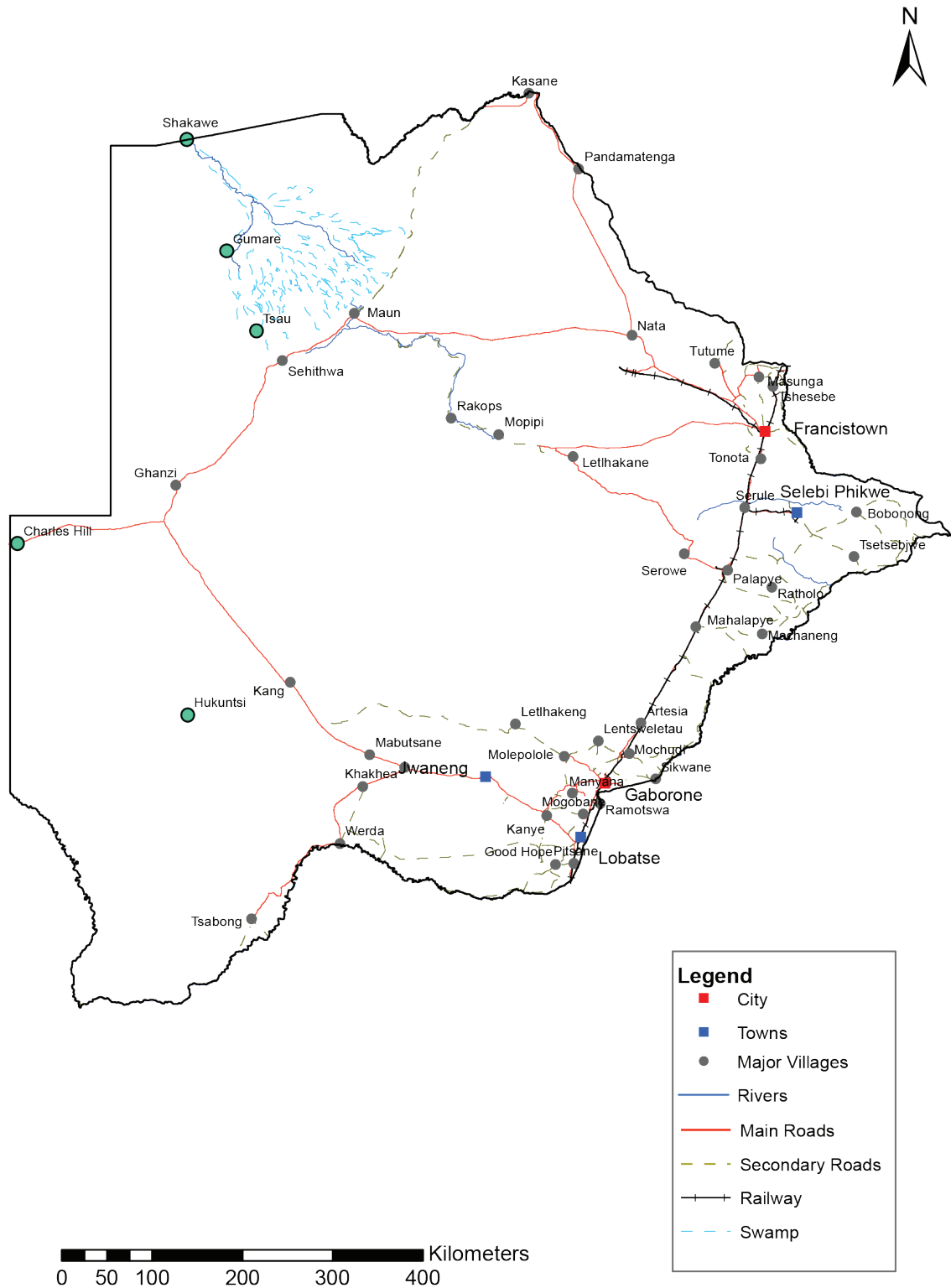
TABLE 4: Core Inflation Rates by Exclusion and Trimmed Mean

Year	Month	Consumer Price Index (Trimmed Mean) (September 2016 = 100)	Core Monthly Inflation Rate (Trimmed Mean) (percentage)	Consumer Price Index (Excluding Administered Prices) (September 2016 = 100)	Core Monthly Inflation (Excluding Administered Prices) (percentage)
2014					
	Jan	90.2	4.1	89.5	5.2
	Feb	90.0	4.1	90.0	5.5
	Mar	90.9	4.0	90.3	5.2
	Apr	90.8	4.1	90.9	5.2
	May	91.0	4.1	91.2	5.2
	Jun	92.2	4.2	91.5	5.3
	Jul	92.4	4.2	91.7	5.3
	Aug	92.2	4.2	92.0	5.3
	Sept	92.3	4.1	92.2	5.2
	Oct	92.9	4.0	92.3	5.1
	Nov	93.2	3.9	92.6	5.0
	Dec	91.6	3.7	92.9	4.9
2015					
	Jan	92.6	3.6	93.7	4.8
	Feb	92.7	3.2	94.3	4.8
	Mar	93.0	3.3	94.7	4.8
	Apr	95.5	3.6	95.3	4.8
	May	95.7	3.5	95.4	4.7
	Jun	96.1	3.6	95.8	4.7
	Jul	96.1	3.6	96.0	4.7
	Aug	96.4	3.5	96.2	4.6
	Sept	96.8	3.4	96.6	4.8
	Oct	97.1	3.6	96.9	5.0
	Nov	97.1	3.3	97.0	4.7
	Dec	97.0	3.2	97.1	4.5
2016					
	Jan	97.5	2.8	97.5	4.0
	Feb	97.7	2.6	97.8	3.7
	Mar	97.9	2.5	98.1	3.7
	Apr	98.5	2.4	98.9	3.9
	May	98.7	2.3	99.1	3.8
	Jun	98.7	2.4	99.3	3.6
	Jul	99.5	2.5	99.5	3.6
	Aug	99.7	2.4	99.7	3.6
	Sept	100.0	2.6	100.0	3.6
	Oct	100.2	2.2	100.2	3.4
	Nov	100.4	2.5	100.6	3.7
	Dec	100.5	2.5	100.7	3.7
2017					
	Jan	101.0	2.7	101.3	3.9
	Feb	101.1	2.9	101.6	3.9
	Mar	101.7	3.1	102.0	3.9
	Apr	102.0	3.1	102.2	3.3
	May	102.1	3.1	102.5	3.4
	Jun	102.4	2.9	102.6	3.3
	Jul	102.5	2.9	102.8	3.3
	Aug	102.6	2.9	102.9	3.3

Table 5: Average Annual Inflation (September 2016=100)

Group		Weights	2007	2008	2009	2010	2011	2012	2013	2014	2015	2016
1	Food & Non-Alcoholic Beverages	16.51	11.2	20.2	14.7	3.6	6.9	8.0	5.4	3.0	1.3	2.7
2	Alcoholic Beverages, Tobacco & Narcotics	7.83	10.1	13.2	35.2	7.1	8.4	7.6	10.3	9.0	6.1	2.5
3	Clothing and Footwear	6.27	1.6	2.0	8.4	8.0	8.9	7.5	6.3	6.0	7.6	6.5
4	Housing, Water, Electr. Gas & Other Fuels	14.90	4.7	8.1	4.8	6.4	8.4	7.7	4.3	3.9	7.1	6.3
5	Furnishing, H/H Equipment & Routine Maintenance	6.39	4.9	6.0	11.9	9.4	9.0	7.3	4.9	5.0	6.1	3.0
6	Health	3.62	12.5	11.3	5.5	2.7	4.5	5.9	5.5	8.3	6.3	3.0
7	Transport	20.65	7.9	21.2	(8.4)	12.1	13.2	10.8	7.3	1.2	(5.1)	(2.7)
8	Communication	4.27	(5.1)	(0.3)	(0.3)	1.2	(3.0)	(1.4)	0.3	0.3	0.3	0.2
9	Recreation & Culture	2.92	(1.8)	2.3	5.0	6.0	8.3	5.8	4.5	4.2	5.7	3.0
10	Education	3.34	6.0	3.9	3.9	5.8	10.6	6.4	4.7	7.4	6.4	3.7
11	Restaurants & Hotels	2.76	15.1	12.7	18.8	9.0	9.3	8.4	7.9	7.6	5.5	4.0
12	Miscellaneous Goods & Services	10.55	4.3	4.9	3.8	7.0	5.3	2.0	1.2	5.2	7.2	7.5
All-Items Index		100.0	7.1	12.6	8.2	6.9	8.5	7.5	5.9	4.4	3.1	2.8

CPI AREA COVERAGE



GLOSSARY

Consumer Price Index (CPI) is an index which measures price changes in goods and services with reference to a base period.

Inflation is a measurement of prices movement of goods and services in a particular country.

Domestic Tradable refers to the goods and services which a country (Botswana) can export to other countries.

Imported Tradable represents the goods and services which a country (Botswana) imports from other countries (trading partners).

Non-Tradable refers to the goods and services which a country cannot export or import to other countries.

All –Tradable refers to the total of Domestic and Imported tradable.

Trimmed Mean Core Inflation- attempts to remove 8 percent (by weight) of the commodity sub-groups with the largest price changes at each of the ends of an ordered series of price changes in any given month.

Core inflation by Exclusion is a measure used to remove the volatility inherent in prices that are only adjusted periodically and not always in response to currently prevailing market forces.

Consumer Price Index

August 2017



STATISTICS BOTSWANA